

Patterns of Strain and the Determination of the Safe Arc of Motion After Subscapularis Repair—A Biomechanical Study

Michael Knesek,¹ Alexander Brunfeldt,¹ Christopher Korenczuk,¹ Karl J. Jepsen,¹ Christopher B. Robbins,¹ Joel J. Gagnier,¹ Answorth A. Allen,^{2,3} Joshua S. Dines,^{2,4} Asheesh Bedi¹

¹Department of Orthopaedic Surgery, University of Michigan, Ann Arbor, Michigan, ²Sports Medicine and Shoulder Service, The Hospital for Special Surgery, New York, New York, ³Weill Medical College of Cornell University, New York, New York, ⁴Shoulder Surgery Service, Long Island Jewish Hospital, Long Island, New York

Received 24 February 2015; accepted 31 August 2015

Published online 18 September 2015 in Wiley Online Library (wileyonlinelibrary.com). DOI 10.1002/jor.23045

ABSTRACT: This study characterizes the strain patterns and safe arcs for passive range of motion (ROM) in the superior and inferior subscapularis tendon in seven cadaveric shoulders, mounted for controlled ROM, after deltopectoral approach to the glenohumeral joint, including tenotomy of the subscapularis tendon 1 cm medial to its insertion on the lesser tuberosity. The tenotomy was repaired with end-to-end suture in neutral rotation. Strain patterns were measured during passive ROM in external rotation (ER), ER with 30° abduction (ER+30), abduction, and forward flexion in the scapular plane (SP) before and after surgery. Percentages were calculated from 35 trials corresponding to five trials of each motion across seven specimens. With ER of 0–30°, 89% of trials of superior subscapularis tendon and 100% of trials of inferior subscapularis tendon achieved strains >3%, with very similar patterns noted in ER+30. In abduction of 0–90°, 5.8% of trials of superior and 85.3% of trials of inferior tendon achieved >3% strain. With passive ROM in SP, 26.5% of trials reached 3% strain in superior tendon compared to 100% in inferior tendon. Strain patterns in abduction and SP differed significantly ($p < 0.001$). Selective tenotomy and repair of the superior subscapularis tendon with open reparative or reconstructive shoulder procedures, when feasible, may be favorable for protected early passive ROM and rehabilitation postoperatively. © 2015 Orthopaedic Research Society. Published by Wiley Periodicals, Inc. *J Orthop Res* 34:518–524, 2016.

Keywords: subscapularis tendon; tenotomy; strain; shoulder; range of motion

Many shoulder procedures, both arthroscopic and open, involve repair of the subscapularis tendon. These include, but are not limited to, surgical procedures in which a subscapularis tenotomy is performed for anterior shoulder stabilization procedures, glenohumeral exposure for shoulder arthroplasty, and large anterosuperior rotator cuff tears involving the subscapularis.^{1–4} Previous authors have reported on the significance of shoulder instability following total shoulder arthroplasty due to subscapularis insufficiency with abnormal lift-off and belly-press examinations.⁵ Partial or complete rupture of the subscapularis tendon after shoulder surgery remains a serious complication that may result in pain, weakness, and instability.^{6–9} Proposed factors associated with postoperative subscapularis rupture or dysfunction following surgical repair include poor quality tissue, trauma, inappropriate physical therapy during the early postoperative period, and insufficient repair techniques.^{5,10–13} In all cases, early range of motion (ROM) that stresses the repair to a point exceeding the strength of the repair should be avoided for an optimal outcome. A rehabilitation protocol describing a safety zone in which postoperative motion exercises can be performed without applying any amount of tension that would impair healing of the repaired rotator cuff has not been described. There are variations to rehabilitation protocols, specifically the timing of when ROM exercises

should be initiated.^{14,15} Some surgeons are moving toward earlier ROM to prevent some of the more devastating complications, including stiffness and arthrofibrosis; however, these have focused on repair of either supraspinatus and infraspinatus tendons.^{16,17} Various authors have described initial placement of the operative extremity in a sling for up to 6 weeks, with no passive external rotation beyond neutral or 30°^{18,19} whereas some protocols involve earlier motion.^{17,20,21} However, the exact amount and specific arc of motion that is safe for the repaired subscapularis taken down for exposure of the glenohumeral joint or following isolated arthroscopic repair, remains unknown. Furthermore, previous authors have clearly described the subscapularis footprint insertional anatomy and demonstrated that there are clear differences within the upper and lower portions of the musculotendinous unit at the insertion. To our knowledge, no literature evaluates the clinical or biomechanical significance of differences between the upper and lower anatomic insertions.²² By evaluating strain within the upper and lower portions of the tendon, we aimed to address the following questions: (1) Should external rotation be limited beyond neutral in all patients in the postoperative period? (2) On the basis of strain patterns within the repaired subscapularis tendon, can passive ROM exercises within the scapular plane or coronal plane be initiated without compromising the integrity of the repair? We hypothesized that strain patterns in the superior and inferior subscapularis tendons are significantly different, and therefore a safe ROM postoperatively that does not interfere with the integrity of the repair may vary depending on tear location.

Institutional Review Board: N/A.

Grant sponsor: OREF resident grant.

Correspondence to: Asheesh Bedi (T: +1-734-930-7393; F: +1-734-930-7402; E-mail: Abedi@med.umich.edu)

© 2015 Orthopaedic Research Society. Published by Wiley Periodicals, Inc.

MATERIALS AND METHODS

Eight fresh-frozen cadaveric upper extremities (bilateral specimens from three males and one female, average age 59 years, range 54–64 years) were obtained from our institution's Anatomical Donations Program. Standard radiographs were obtained for all specimens. Any specimen with glenohumeral osteoarthritis and large or massive rotator cuff tears was excluded, leaving seven specimens for subsequent study and analysis. The specimens were stored at -20°C and thawed overnight at room temperature prior to testing. Testing and reconstruction were performed at room temperature and completed within 24–48 h of thawing. No specimens were found to have any disruption or evidence of tear within the subscapularis musculotendinous unit.

Each cadaveric upper extremity was amputated medial and inferior to the scapular body as well as the mid-humerus to obtain the entire shoulder girdle. A standard deltopectoral approach was used to identify the subscapularis tendon, after which all soft tissues anterior to the subscapularis tendon were removed for data collection and analysis. This included select portions of the acromion and coracoid process that would obstruct the motion-capture system from collecting data throughout the various shoulder arcs of motion.

The scapular portion of the shoulder specimen was then mounted onto a customized machined fixture (Fig. 1). The previously potted portion of the distal humerus was then fixed with one of two custom-made fixtures, specifically one for internal rotation, external rotation, and 30° of abduction with external rotation, as well as a second fixture for abduction and forward flexion in the scapular plane. The humeral rod was attached to the arc of the apparatus using a linear-bearing slide to permit axial sliding. The bicipital groove was positioned to face anteriorly, so as to ensure a consistent starting position with each shoulder specimen in the neutral position.

Motion-tracking sensors were placed within the upper and lower portions of the subscapularis tendon within the tendinous insertion onto the humeral lesser tuberosity. The Optotrak CertusTM motion-capture system (Northern Digital, Inc., Waterloo, Ontario, Canada) and MotionMonitor software (Innovative Sport Training, Inc., Chicago, IL) were used to collect the positions of two markers placed within the upper portion of the subscapularis tendon and two markers

placed within the inferior portion of the tendon throughout the arc of internal rotation, external rotation, abduction and external rotation, abduction in the coronal plane, and forward flexion in the scapular plane.

Following measurement of marker positions within the intact subscapularis musculotendinous unit in all previously described arcs of motion, a standard tenotomy was performed perpendicular to the fibers as they traversed from the medial scapular body to the lesser tuberosity insertion, approximately 1–2 cm medial to the insertion, leaving a cuff of tendon laterally for repair as described by Caplan et al.²³ The Optotrak markers were placed approximately 5 cm apart, and ultimately the tenotomy left approximately 2.5 cm of tissue on each side.

The subscapularis tendon was repaired using a Mason–Allen suture technique with 0 Ethibond suture (Arthrex, Inc., Naples, FL). This suture technique was chosen based on previous studies regarding gapping and biomechanical strength of various rotator cuff suture repair techniques.^{24–27} This grasping stitch has been reported to have favorable results in minimizing gap formation and cyclic failure after rotator cuff repair.^{25,27} The repair was performed with the forearm directly anterior in neutral rotation, the same position that the arm was in for the subscapularis tenotomy. This was made possible by placing a guidewire in the bicipital groove; the neutral arm/forearm position was indicated when the guidewire was perpendicular to the arm (facing directly anterior).²⁸

Spacing of the Optotrak transducers ensured that one transducer would be on either side of the repaired tendon to allow for measurement within the intact or repaired portion of the tendon. The Optotrak sensors were secured to the subscapularis tendon with glue and 3.0 nylon (Ethicon) suture to secure the Optotrak cords away from the field of motion capture.

To calculate strain, Optotrak data were then imported to a customized MATLAB program, which then calculated the strain values within the upper and lower portions of the subscapularis tendon. The cumulative sum of each Optotrak marker length change, frame by frame, was calculated as $\sum \frac{l_{i+1} - l_i}{l_{i+1}}$. We had two markers in the superior portion of the tendon, measured displacement between those markers and calculated strain; we similarly did this in the inferior portion

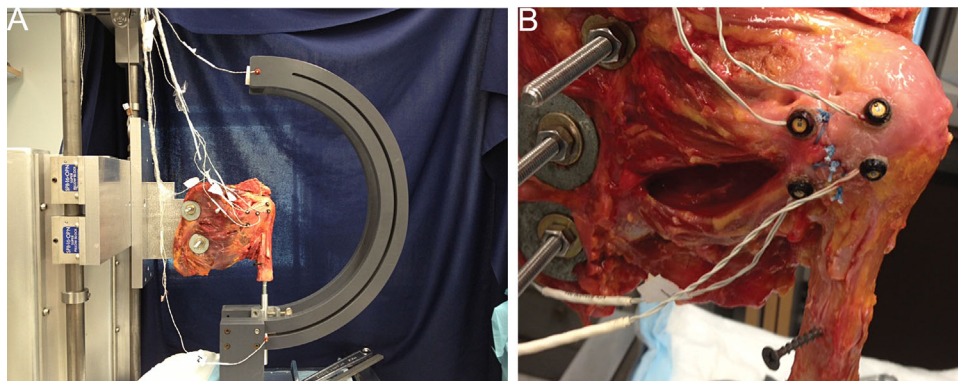


Figure 1. (A) Mounting device for investigating simulated rehabilitation range of motion in cadaveric shoulder specimens, shown during pretrial testing. The distal humerus was previously potted and then fixed with one of two custom-made fixtures, specifically one for internal rotation, external rotation, and 30° of abduction with external rotation, and a second fixture for abduction and forward flexion in the scapular plane. The humeral rod was attached to the arc of the apparatus using a linear-bearing slide to permit axial sliding. The bicipital groove was positioned to face anteriorly, so as to ensure a consistent starting position with each shoulder specimen in the neutral position. (B) Close-up view of a mounted specimen showing tenotomy and markers.

of the tendon as well. Therefore, there is one measurement for superior tendon strain, and one measurement for inferior tendon strain.

Five trials of each ROM were conducted on both the intact and then the repaired portion of the subscapularis tendon in the following order: (1) internal rotation with the arm neutral, (2) external rotation with the arm neutral, (3) external rotation with the arm at 30° of abduction, (4) abduction to 90° in the coronal plane, and (5) forward flexion to 90° in the scapular plane.

To simulate a typical passive range of motion protocol, the research testing assistant moved the shoulder through the various ranges described above with a controlled rate utilizing a timer throughout each arc of motion. Each specimen trial run through the arc of motion was performed in a 5-s interval. Preconditioning was performed in all specimens within five cycles in the external rotation arc of motion, from approximately 0°–30°, for both intact and repaired tendon. The shoulder position was then changed after internal rotation, external rotation, and external rotation with 30° abduction to the second custom mounting device so as to allow for the final two arcs of motion of abduction and forward flexion in the scapular plane (Fig. 1).

Statistical Analysis

Strain patterns were defined with marker plots throughout the arc of motion, and absolute strain of greater than 3% was defined as clinically concerning for failure.^{29,30} These analyses and investigations were conducted using the procedures available in SPSS v. 21.0 (IBM Corp., Armonk, NY). Categorical data were examined in contingency tables, with inferential testing using the chi-square test. The superior and inferior tendons were matched and examined for differences in proportions of strain patterns (<3, 0–30, and >30 trials with >3% strain, out of 35 trials) across seven subjects with five measurements for each subject. The multiple measurements, as well as cells with less than five responses, were controlled for within the chi-square test by use of the McNemar–Bowker test for $K > 2$ categories to reduce the inflation of type-I error.

Trajectory plots were created for visual aid with utilization of graphics interchange format (GIF) to allow for representation of the markers throughout each arc of motion.

RESULTS

The results from seven cadaveric specimens were utilized for analysis. For one of the specimens, only four trials were performed due to researcher error, thus we had 34 trials for analysis. With external rotation (ER) from 0° to 30°, 89% (31/35) of the trials in the superior portion of the tendon experienced greater than 3% strain, and 100% (35/35) of the trials in the inferior portion of the tendon achieved greater than 3% strain, with very similar patterns noted in ER with 30° abduction (ER+30) (Table 1). In abduction (AB) from 0° to 90°, only 5.8% (2/34) of trials of the superior tendon and 85.3% (29/34) of trials of the inferior tendon achieved greater than 3% strain. With passive ROM in the scapular plane (SP), only 26.5% (9/34) of trials reached 3% strain in the superior tendon compared to 100% (34/34) of trials achieving at least 3% strain within the inferior tendon. These results are summarized in Table 1. There was a statistically significant difference between the strain patterns in both abduction $X^2(2, N = 34) = 36.4$, $p < 0.001$, and scapular plane $X^2(2, N = 34) = 39.0$, $p < 0.001$ between the upper and lower portion of the subscapularis tendon. Strain versus angle graphs and three-dimensional marker plots demonstrate visual representation of either compression or strain throughout the trial runs in ER, ER+30, AB, and SP (Figs. 2–4).

DISCUSSION

The subscapularis musculotendinous unit, with its origination from the subscapularis fossa of the scapular body and insertion into the humeral lesser tuberosity, comprises the anterior rotator cuff, providing active internal rotation of the humerus and stability to the glenohumeral joint.³¹ Electromyogram studies have confirmed that upper and lower portions of the tendon, innervated by the upper and lower subscapularis nerves, respectively, demonstrate different levels

Table 1. Summary of Strain Measurements Across the Subscapularis Repair Within the Superior and Inferior Portions of the Tendon for All Trials

	Strain Measurements Across Repaired Subscapularis Tendon		
	Trials >3% Strain	Trials <3% Strain	Trials With Compression
ROM Superior Tendon			
ER 0–30°	31/35 (88.6%)	4/35 (11.4%)	0/35
ER+30, abduction 0–30°	35/35 (100%)	0/35	0/35
Abduction 0–90°	2/34 (5.8%)	32/34 (94%)	0/34
Scapular plane 0–90°	9/34 (26.5%)	25/34 (73.5%)	0/34
ROM Inferior Tendon			
ER 0–30°	35/35 (100%)	0/35	0/35
ER+30, abduction 0–30°	33/35 (94.3%)	2/35 (5.7%)	0/35
Abduction 0–90°	29/34 (85.3%)	3/34 (8.8%)	2/34 (5.8%)
Scapular plane 0–90°	34/34 (100%)	0/34	0/34

ER, external rotation; ROM, range of motion. The categories included those trials in which greater than 3% strain was obtained, those in which strain was measured but did not achieve 3%, and finally those in which compression was noted across the repair.

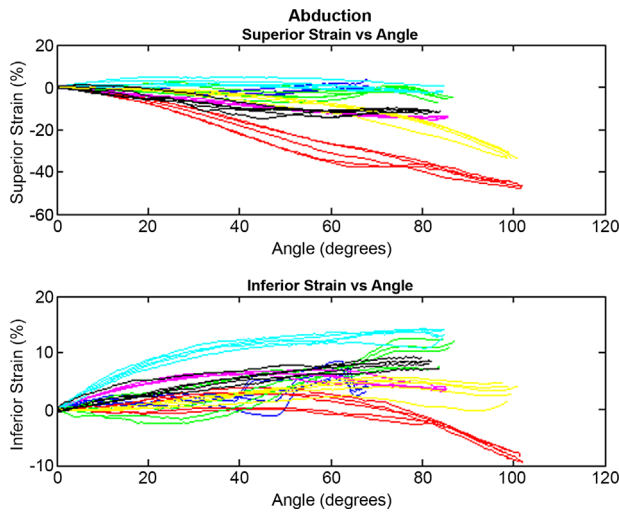


Figure 2. Marker positions were used to calculate the strain at intervals of 5° throughout the range of motion. During abduction, 29/34 trials experienced negative strain, or compression, in the superior tendon, and 29/34 reached 3% strain in the inferior aspect of the tendon. Each color represents trials from one specimen.

of activation that may play a role in dynamic rehabilitation.³² Tenotomy of the entire subscapularis tendon is very often required for access during total shoulder arthroplasty; however, the tendon is often split or the upper portion may be taken down for open stabilization and reconstructive glenoid procedures such as the Latarjet–Patte procedure. Traumatic tears have been classified and similarly can involve the entire upper and lower portion of the tendon or a partial disruption of the upper portions of the tendon alone.³³

Limited studies have assessed a defined “safe” shoulder range of motion following repair of the rotator cuff musculature but have primarily evaluated

repair of the supraspinatus.³⁴ Previous studies have identified increased strain following supraspinatus repair with greater than 30° of elevation in the coronal or scapular plane and external rotation greater than 60° .³⁴ Other studies have demonstrated that humeral rotation can further alter gap formation and strain in the repaired supraspinatus tendon. The importance of early postoperative ROM exercise has been emphasized by various authors, with proposed benefits including avoidance of scar formation above the repaired rotator cuff as well as adhesions of the subacromial bursa, contracture of the capsule, and muscle degeneration from long-term immobilization.^{35,36} These benefits, however, have not been clearly demonstrated with early range of motion protocols in randomized clinical trials.¹⁷

Our study is the first, to our knowledge, to identify and address the strain patterns within the subscapularis of the rotator cuff and specifically attempt to define a safe arc of motion that would protect the integrity of any subscapularis repair. Within external rotation and external rotation plus 30° of abduction, there was a linear increase in strain within the upper and lower portions of the repaired subscapularis tendon. Thus current protocols that limit any external rotation beyond neutral, often with a shoulder immobilizer, do protect the integrity of the repair. However, in our study, we began to see a statistically significant difference in patterns of strain between the upper and lower portions of the subscapularis tendon in the arc of abduction and forward flexion in the scapular plane. Specifically, the upper portion of the tendon experienced significantly less strain, less than 3% in 94% (32/34) of specimens in abduction and 74% (25/34) of specimens in the scapular plane. With increasing angles of abduction, the upper portion of the tendon actually underwent compression, whereas the inferior

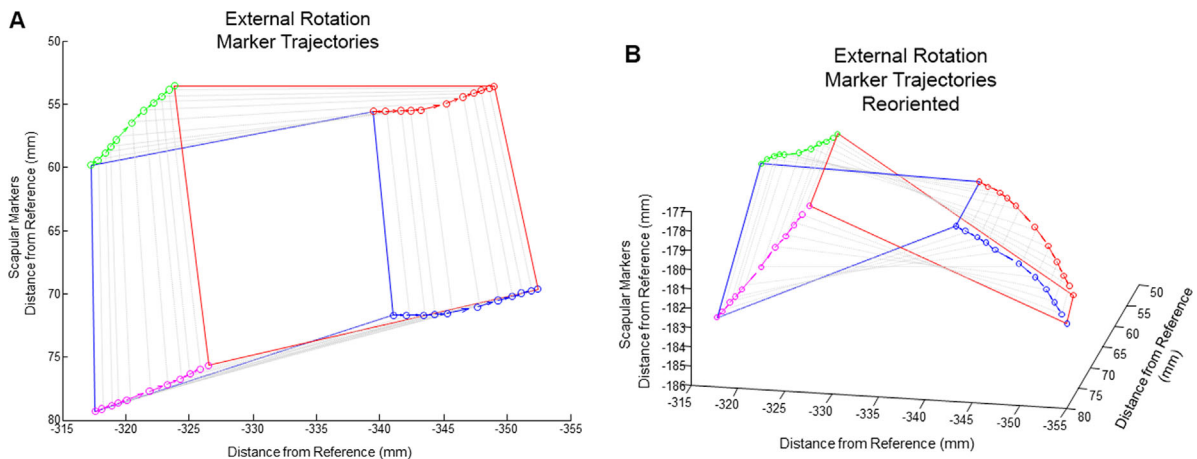


Figure 3. (A) Trajectory plot of the strain markers in external rotation, with the blue rectangle representing the position of the markers during their initial placement (tendon at rest), the green and pink rectangles representing separate time points of the markers along the arc of motion, and the red rectangle representing the final placement at the end of the arc of motion. (B) The same trajectory plot of the external rotation strain markers looking from distal to proximal up the humerus, demonstrating strain and lengthening as the tendon moves over the humeral head (blue representing initial marker placement and red final marker placement).

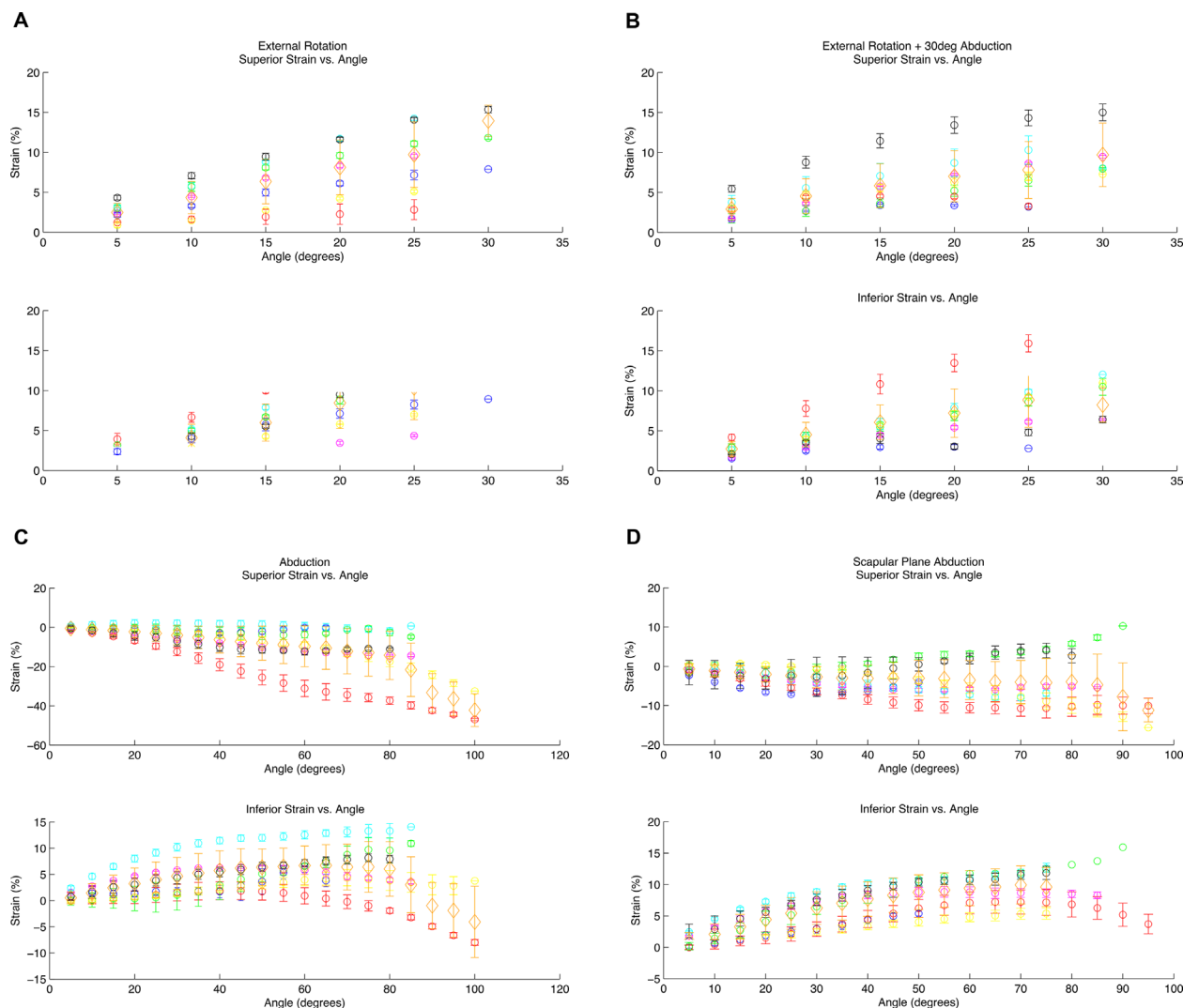


Figure 4. Marker positions were used to calculate the strain at intervals of 5° throughout the range of motion. The average and standard deviation of each five-trial block was plotted against angle with each color representing a different specimen. Average across all specimens is shown with orange diamonds. (A) External rotation, (B) external rotation + 30° of abduction, (C) abduction, and (D) forward flexion in the scapular plane.

markers continued to lengthen. Similarly in forward flexion in the scapular plane, there was very little lengthening and overall strain within the upper portion of the subscapularis tendon, whereas the inferior portion of the tendon continued to experience a more linear strain pattern throughout the arc of motion. Therefore, the results of the current study suggest that a traumatic partial tear of the upper portion of the subscapularis or open stabilization surgery in which the lower portion of the subscapularis tendon is preserved may have a greater arc of safe passive abduction and forward flexion in the scapular plane postoperatively.

There are several limitations to our study. The first is that the tissue quality among the cadaveric specimens may have been variable. Traumatic tears and degenerative rotator cuff tears may involve tissue of varying quality, and thus the overall viscoelastic

nature of each individual specimen likely differed. Second, removal of soft tissue and structures (including the coracohumeral ligament) anterior to the subscapularis tendon, and changes within the remaining biceps brachi, having no distal attachment, may alter the amount of strain experienced within the subscapularis tendon. Third, although our customized jig and mounting device was based on a previous model that worked well for our specific testing,³⁴ our device did not allow for normal scapulothoracic motion and ultimately may not have simulated the exact patterns of dynamic strain across the shoulder girdle. Lastly, strain depends on rate given the viscoelastic nature of tendons and collagen fibrils, and although we attempted to control the rate of motion throughout our experiment, the shoulder was manually taken through the arc of motion. Thus minor differences in rate between trials and specimens may have altered strain.

Furthermore, although we aimed to place the markers, tenotomy, and repair the same distance apart for each specimen with measurements, there may have been minor discrepancies among specimens, and thus strain measurements may have altered depending upon distance and soft tissue stretch between the intact and repaired portion of the tendon.

CONCLUSION

Our study has clear implications for the nature of postoperative rehabilitation following subscapularis tears or surgical procedures that require tenotomy of the whole, or a portion, of the subscapularis tendon. The results of our study suggest that repairs of the superior, or upper portion, of the subscapularis tendon may be favorable for an early ROM protocol with a therapist if passive ROM is within the “safe zone” involving abduction from 0° to 90° as well as forward flexion in the scapular plane from 0° to 90°. If, however, a subscapularis repair involves the inferior, or lower half, of the tendon, it remains important to limit elevation of the extremity in abduction and forward flexion in the scapular plane, as this would increase strain within the repair and leave the potential for failure. Furthermore, external rotation within any plane should be avoided, even with limited tenotomies, as this places strain across any repair. Earlier ROM and avoidance of a prolonged period of complete immobilization in a sling/shoulder immobilizer for 4–6 weeks may ultimately limit postoperative arthrofibrosis and stiffness, and lead to improved outcome measures and shoulder function.

AUTHORS' CONTRIBUTIONS

Conception and design were done by A. Bedi. Data collection was done by M.K., A.B., C.K., and A. Bedi. Analysis and interpretation was done by M.K., A.B., K.J.J., A.A.A., J.S.D., and A. Bedi. M.K., A.B., K.J.J., C.B.R., J.J.G., A. Bedi wrote the manuscript. Critical revision was done by M.K., A.B., and A. Bedi. Statistical analysis was done by C.B.R., J.J.G., and A. Bedi. M.K., A.B., C.K., K.J.J., A. Bedi provided administrative, technical, or material support. All authors have read and approved the final submitted manuscript.

REFERENCES

- DeFranco MJ, Higgins LD, Warner JJP. 2010. Subscapularis management in open shoulder surgery. *J Am Acad Orthop Surg* 18:707–717.
- Jackson JD, Cil A, Smith J, et al. 2010. Integrity and function of the subscapularis after total shoulder arthroplasty. *J Shoulder Elbow Surg* 19:1085–1090.
- Krishnan SG, Stewart DG, Reineck JR, et al. 2009. Subscapularis repair after shoulder arthroplasty: biomechanical and clinical validation of a novel technique. *J Shoulder Elbow Surg* 18:184–192.
- Van den Bergh GR, Nguyen B, Patil S, et al. 2008. A biomechanical evaluation of three surgical techniques for subscapularis repair. *J Shoulder Elbow Surg* 17:156–161.
- Miller SL, Hazrati Y, Klepps S, et al. 2003. Loss of subscapularis function after total shoulder replacement: a seldom recognized problem. *J Shoulder Elbow Surg* 12:29–34.
- Bohsali KI, Wirth MA, Rockwood CA. 2006. Complications of total shoulder arthroplasty. *J Bone Joint Surg Am* 88A:2279–2292.
- Resch H, Povacz P, Ritter E, et al. 2000. Transfer of the pectoralis major muscle for the treatment of irreparable rupture of the subscapularis tendon. *J Bone Joint Surg Am* 82A:372–382.
- Scheibel M, Habermeyer P. 2008. Subscapularis dysfunction following anterior surgical approaches to the shoulder. *J Shoulder Elbow Surg* 17:671–683.
- Wirth MA, Rockwood CA. 1996. Complications of total shoulder-replacement arthroplasty. *J Bone Joint Surg Am* 78A:603–616.
- Armstrong A, Lashgari C, Teeffey S, et al. 2006. Ultrasound evaluation and clinical correlation of subscapularis repair after total shoulder arthroplasty. *J Shoulder Elbow Surg* 15:541–548.
- Cleeman E, Brunelli M, Gothelf T, et al. 2003. Releases of subscapularis contracture: an anatomic and clinical study. *J Shoulder Elbow Surg* 12:231–236.
- Miller BS, Joseph TA, Noonan TJ, et al. 2005. Rupture of the subscapularis tendon after shoulder arthroplasty: diagnosis, treatment, and outcome. *J Shoulder Elbow Surg* 14:492–496.
- Moeckel BH, Altchek DW, Warren RF, et al. 1993. Instability of the shoulder after arthroplasty. *J Bone Joint Surg Am* 75A:492–497.
- Brems JJ. 1994. Rehabilitation following total shoulder arthroplasty. *Clin Orthop Relat Res* 307:70–85.
- Brown DD, Friedman RJ. 1998. Postoperative rehabilitation following total shoulder arthroplasty. *Orthop Clin North Am* 29:535–547.
- Denard PJ, Ladermann A, Burkhart SS. 2011. Prevention and management of stiffness after arthroscopic rotator cuff repair: systematic review and implications for rotator cuff healing. *Arthroscopy* 27:842–848.
- Keener JD, Galatz LM, Stobbs-Cucchi G, et al. 2014. Rehabilitation following arthroscopic rotator cuff repair: a prospective randomized trial of immobilization compared with early motion. *J Bone Joint Surg Am* 96:11–19.
- Burkhart SS, Brady PC. 2006. Arthroscopic subscapularis repair: surgical tips and pearls A to Z. *Arthroscopy* 22:1014–1027.
- Parsons BO, Gruson KI, Chen DD, et al. 2010. Does slower rehabilitation after arthroscopic rotator cuff repair lead to long-term stiffness?. *J Shoulder Elbow Surg* 19:1034–1039.
- Klintberg IH, Gunnarsson AC, Svantesson U, et al. 2009. Early loading in physiotherapy treatment after full-thickness rotator cuff repair: a prospective randomized pilot-study with a two-year follow-up. *Clin Rehabil* 23:622–638.
- Koo SS, Parsley BK, Burkhart SS, et al. 2011. Reduction of postoperative stiffness after arthroscopic rotator cuff repair: results of a customized physical therapy regimen based on risk factors for stiffness. *Arthroscopy* 27:155–160.
- Richards DP, Burkhart SS, Tehrany AM, et al. 2007. The subscapularis footprint: an anatomic description of its insertion site. *Arthroscopy* 23:251–254.
- Caplan JL, Whitfield B, Neviasser RJ. 2009. Subscapularis function after primary tendon to tendon repair in patients after replacement arthroplasty of the shoulder. *J Shoulder Elbow Surg* 18:193–196.
- Hapa O, Barber FA, Sunbuloglu E, et al. 2011. Tendon-grasping strength of various suture configurations for rotator cuff repair. *Knee Surg Sports Traumatol Arthrosc* 19:1749–1754.
- Lorbach O, Anagnostakos K, Veas J, et al. 2010. Three-dimensional evaluation of the cyclic loading behavior of

- different rotator cuff reconstructions. *Arthroscopy* 26: S95–S105.
26. Ma CB, Comerford L, Wilson J, et al. 2006. Biomechanical evaluation of arthroscopic rotator cuff repairs: double-row compared with single-row fixation. *J Bone Joint Surg Am* 88A:403–410.
 27. Ma CB, MacGillivray JD, Clabeaux J, et al. 2004. Biomechanical evaluation of arthroscopic rotator cuff stitches. *J Bone Joint Surg Am* 86A:1211–1216.
 28. Kummer FJ, Perkins R, Zuckerman JD. 1998. The use of the bicipital groove for alignment of the humeral stem in shoulder arthroplasty. *J Shoulder Elbow Surg* 7:144–146.
 29. Butler DL, Grood ES, Noyes FR, et al. 1978. Biomechanics of ligaments and tendons. *Exerc Sport Sci Rev* 6:125–181.
 30. Park MC, Jun BJ, Park CJ, et al. 2007. The biomechanical effects of dynamic external rotation on rotator cuff repair compared to testing with the humerus fixed. *Am J Sports Med* 35:1931–1939.
 31. Piasecki DP, Nicholson GP. 2008. Tears of the subscapularis tendon in athletes-Diagnosis and repair techniques. *Clin Sports Med* 27:731–745.
 32. Decker MJ, Tokish JM, Ellis HB, et al. 2003. Subscapularis muscle activity during selected rehabilitation exercises. *Am J Sports Med* 31:126–134.
 33. Lafosse L, Jost B, Reiland Y, et al. 2007. Structural integrity and clinical outcomes after arthroscopic repair of isolated subscapularis tears. *J Bone Joint Surg Am* 89:1184–1193.
 34. Hatakeyama Y, Itoi E, Pradhan RL, et al. 2001. Effect of arm elevation and rotation on the strain in the repaired rotator cuff tendon - A cadaveric study. *Am J Sports Med* 29:788–794.
 35. Evans RB, Thompson DE. 1993. The application of force to the healing tendon. *J Hand Ther* 6:266–284.
 36. Sward L, Hughes JS, Amis A, et al. 1992. The strength of surgical repairs of the rotator cuff. A biomechanical study on cadavers. *J Bone Joint Surg Br* 74:585–588.

SUPPORTING INFORMATION

Additional supporting information may be found in the online version of this article at the publisher's website.