

CHEMISTRY

AN ASIAN JOURNAL

Supporting Information

Nano/Micro-Structured Si/C Anodes with High Initial Coulombic Efficiency in Li-Ion Batteries

Quan Xu,^[a, b] Jin-Yi Li,^[a, b] Ya-Xia Yin,^[a] Yi-Ming Kong,^[a] Yu-Guo Guo,^{*[a, b]} and Li-Jun Wan^[a]

asia_201600067_sm_miscellaneous_information.pdf

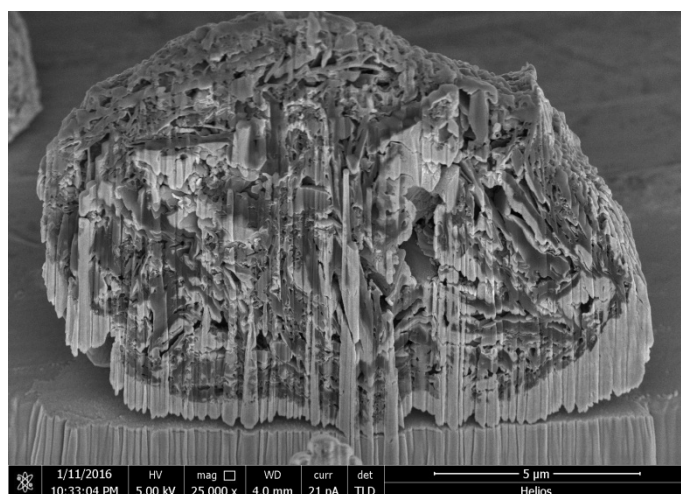


Figure S1. Focused Ion Beam (FIB) cross-sectional images of Si/C-1.

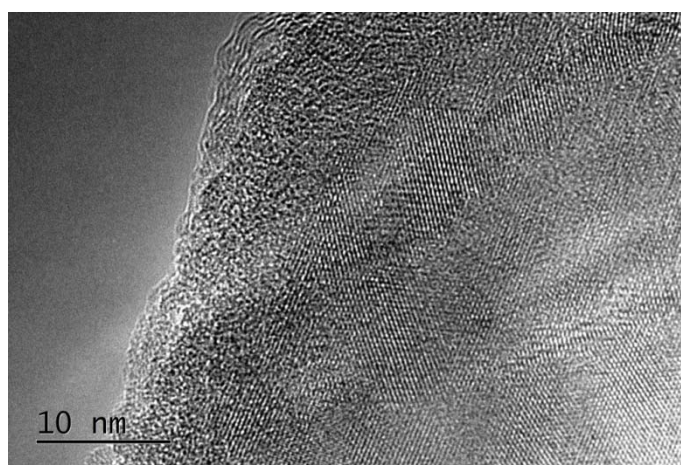


Figure S2. HRTEM image of carbon-coated nano-Si particles.

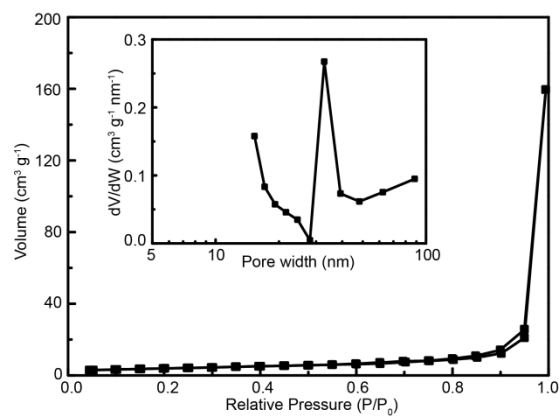


Figure S3. The N₂ adsorption/ desorption isotherms of Si/C-1; insert shows the pore size distribution plots using the BJH method.

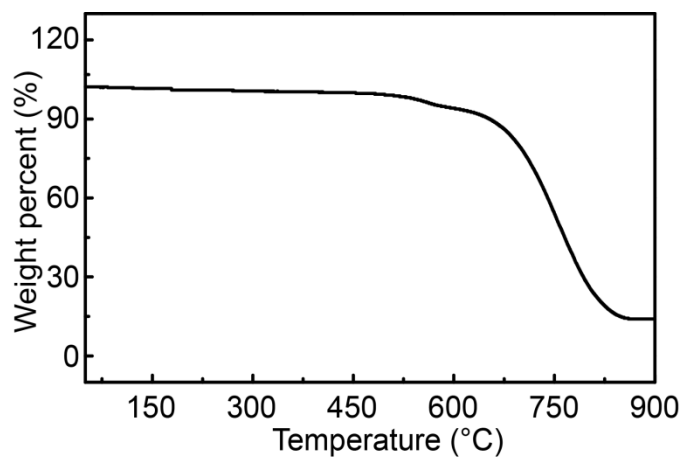


Figure S4. The TG curves of Si/C-1 from 50 °C to 900 °C at 5 °C min⁻¹ under air.

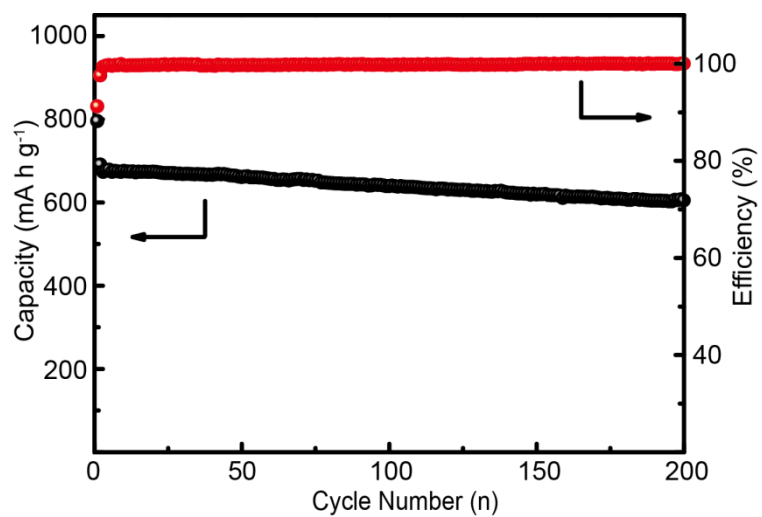


Figure S5. The cycling performance of Si/C-1 anodes under a constant current of 0.1 A g⁻¹ for the first cycle and 0.5 A g⁻¹ (0.7 C) for later cycles.