



Location or insolation: the importance of siting in emissions mitigation from solar photovoltaics

Jeremiah X. Johnson*

Achieving environmental benefits is often a primary motivation for integrating renewable energy into the grid. The magnitude of generation from a solar power project is influenced by the solar resource quality, but locations with high insolation do not necessarily yield the greatest emission reduction benefits. This study simulates the power system response to 10 identical solar projects in different regions across the United States, selected to represent a wide range of solar resource quality and power grid configurations. The power grid mix is often a key determinant in offsetting CO₂, SO₂, and NO_x emissions, illustrating how lower-quality solar resources can be more effective than sunnier sites at emissions mitigation when one considers characteristics of the power grid. The analysis shows a strong relationship between emissions mitigation and the share of offset generation that is coal-fired. The strongest correlation is shown for CO₂; the presence or absence of emissions control equipment and the sulfur content of the coal complicates the relationship of SO₂ and NO_x. The emissions intensity of offset generation is insensitive to whether the solar project is fixed tilt or single-axis tracking. When seeking to mitigate power sector emissions, the impacts of solar design considerations on the temporal profile of generation are less important than the overall amount of generation and the location of interconnection. Public policies that target only the magnitude of generation from renewables (e.g., many Renewable Portfolio Standards) or the installed cost (e.g., the Investment Tax Credit) will likely lead to suboptimal emissions mitigation. © 2017 John Wiley & Sons, Ltd

How to cite this article:

WIREs Energy Environ 2017, 6:e249. doi: 10.1002/wene.249

INTRODUCTION

One of the primary motivations for the expansion of renewable generation is to reduce emissions from and the environmental impact of the power system. Variable renewables, namely wind and solar power, are generated when the resource is available and must be balanced by dispatchable generators or

flexible loads on the grid. When considering the desirability of variable renewable projects, resource quality is a common metric deployed (e.g., solar irradiance and wind speed distribution). While resource quality is a key determinant of the magnitude of electricity that the project will produce, it is not the only factor that will determine the environmental benefits of a project.

The grid characteristics, load profiles, and the seasonal and diurnal shapes of generation are also important considerations for emissions reduction. The marginal emissions factor for a region varies over time, determined by these grid characteristics.¹ Integrating variable renewables into a grid

*Correspondence to: jxjohns@umich.edu

Center for Sustainable Systems, School of Natural Resources & Environment, University of Michigan, Ann Arbor, MI, USA

Conflict of interest: The author has declared no conflicts of interest for this article.

dominated by natural gas generation will likely yield less of an environmental benefit than integration into a coal-dominated grid.

This article reviews research on the relative importance of the location of interconnection for emissions mitigation from a renewable project. In addition, emissions mitigation from 10 MW_{dc} of solar photovoltaics is quantified at 10 US locations. These sites were selected to represent a wide range in solar resource quality and regional power grid characteristics.

Other studies have investigated the impact of variable renewables on power system emissions. In 2013, Siler-Evans et al. examined the magnitude of emission reductions for wind and solar power to show regional disparities in impacts, with some lower-quality sites yielding greater health and environmental benefits.² In a working paper, Callaway et al. also estimate that emissions-related benefits from renewable energy and energy efficiency account for between a quarter and a half of the total value generated, with important regional variations.³ Valentino et al. used a unit commitment and economic dispatch model to assess the emissions impacts of increasing penetrations of wind generation in a single region (Illinois) to highlight the impact of emissions from power plant cycling and start-up.⁴ These studies underscore the importance of siting a renewable project and the impact power system characteristics have on the outcomes for emissions reduction.

Several other studies have examined the economic benefits of emissions reduction attributable to the introduction of renewable generation. Cullen estimated emission reductions from wind in Texas, showing that production subsidies are often not justified on the basis of the social cost of pollution alone.⁵ Kaffine et al. also estimated emission reductions in Texas, finding that a substantial variation in reduction exists, strongly driven by the generation mix.⁶ In demonstrating that renewable generation is not a homogenous good, Novan illustrated how different options yield heterogeneous environmental benefits per unit of generation.⁷ In a recent paper, Chiang et al. examined the role of siting decisions in the value of mitigated emissions from offshore wind, estimating both resource quality and abatement value.⁸

Understanding regional disparities in emissions rates is an essential component of effectively mitigating harm. Kerl et al. coupled a reduced-form atmospheric model with a unit commitment and economic dispatch model to show how considering such regional disparities and air quality outcomes can

inform changes in operations. They demonstrated that understanding the spatial distribution of impacts could be used to inform dispatch, yielding net benefits when pollution damage costs are considered.⁹

In a comprehensive review, Ryan et al. examined the wide variety of models and methods that have been developed to calculate grid electricity emissions, finding that it is imperative to match the method to the research question and grid characteristics at hand.¹⁰ Methods range from simple emissions factors (e.g., the US Environmental Protection Agency's eGRID database of average and nonbase-load emissions factors¹¹) to more complex statistical relationships between load and emissions (e.g., Ref 12). Determining the grid electricity emissions is relevant not only to the integration of renewable energy but also for the estimation of the emissions impacts on changes in load driven by efficiency measures (i.e., decreases in load) or new sources of demand (i.e., increases in load). For example, much attention has been paid to the emissions impacts associated with electric vehicles (e.g., Refs 13,14).

This focus article further examines the question: What is the importance of grid characteristics in emissions reduction from solar PV relative to the role of solar resource quality? The analysis presented here extends past efforts by examining more contemporary data (2015), changes to offset emissions intensity over time (2007–2015), different solar project configurations (fixed vs tracking), and different regional definitions.

METHODS

A total of 10 sites were selected to illustrate diverse power system characteristics and solar resource quality, subject to the availability of Typical Meteorological Year 3 (TMY3) data.¹⁵ TMY data provide the most representative weather data for a given station, including solar radiation and temperature. Figure 1 shows the location of these 10 sites.

The hourly output from the solar projects are simulated using the US National Renewable Energy Laboratory's (NREL's) System Advisor Model,¹⁶ under both fixed tilt and single-axis tracking design. For the fixed tilt systems, the system design and key assumptions include 10 MW_{dc} of First Solar FS-4100 modules, a DC-to-AC ratio of 1.2 with an AE Solar Energy 5.0 inverter, and 5.4% power losses. The projects are designed with fixed tilt equal to latitude and a due south orientation. Row spacing is set to achieve a ground cover ratio of 0.3 to minimize self-shading, and it is assumed that the projects do not experience curtailment. The single-axis tracking

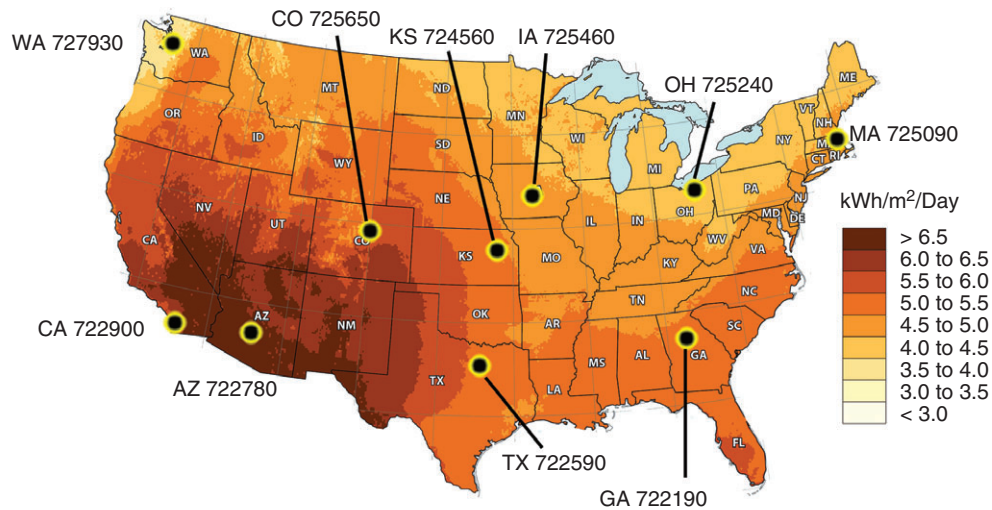


FIGURE 1 | Map of 10 selected solar photovoltaic sites (with Typical Meteorological Year 3 station identification numbers and state abbreviations), superimposed on a US National Renewable Energy Laboratory solar resource map, which assumes a solar collector tilt angle set at latitude

system design uses Sun Power E20-327 modules, with a horizontal east–west tracking system, a rotational capability of 75° from center, and optimized backtracking to mitigate shading impacts. The selection of thin film for the fixed axis and crystalline silicon for the tracking configuration is consistent with recent trends in US solar development.¹⁷

The hourly generation profiles for each of the sites are then coupled with the Avoided Emissions and Generation Tool (AVERT) developed for the US Environmental Protection Agency.¹⁸ This model calculates the emissions impacts of displaced generation on the introduction of renewable energy and energy efficiency projects, relying on historical relationships between past generation, heat input, and emissions. The results have an hourly temporal resolution specific to each of the 10 regions across the continental United States. For this analysis, one solar location was selected for each of AVERT's 10 regions, with grid data from 2015.

The total annual emissions reduction (M) is represented by Eq. (1):

$$M = \sum_{i=1}^{8,760} EI_i \cdot G_i \quad (1)$$

where EI_i is the emissions intensity of offset generation (metric tons or kg of pollutant offset per MWh of solar generation) in hour i , and G_i is the solar generation (MWh) in hour i . This simple relationship is useful to illustrate the importance of matching emissions intensities with renewable generation on a temporally resolved basis to accurately represent total emission reductions.

ROLE OF SITING IN EMISSIONS MITIGATION

As expected, the selected sites with a higher typical solar insolation yielded more solar generation and higher system capacity factors. Table 1 shows the annual project generation for each of the selected sites and the associated capacity factor for both the fixed tilt and single-axis tracking configurations. Capacity factors are calculated as the ratio of project output (AC terms) to the maximum module production (DC-rated capacity), consistent with the approach used by the US NREL's System Advisor Model. The results in Table 1 show the importance of solar resource quality, with the highest producing site (Phoenix, AZ) yielding over 60% more generation than the lowest producing site (Seattle, WA). Shifting from fixed tilt to single-axis tracking increases the annual generation between 18% and 24% depending on the location.

The mitigation of emissions, however, is not simply determined by the annual solar generation. The emissions intensity of offset generation is also a key determinant in total emission reductions. Figure 2 (a) shows the results for CO_2 mitigation on the introduction of the 10 MW_{dc} fixed tilt solar project in each of the 10 selected locations. The color of each region represents the average offset emissions intensity in terms of tons of CO_2 per MWh of solar generation. These values are specific to the generation profile of the given solar project (i.e., the time of day of the generation) and represent the net emissions associated with the change in generation due to the introduction of the solar as a function of the magnitude of

TABLE 1 | Annual Solar Generation from a 10 MW_{dc} Project at 10 Sites, with Either Fixed Tilt Set at Latitude or Single-Axis Tracking

Site	Station Identification	Fixed Tilt at Latitude		Single-Axis Tracking	
		Annual Generation (MWh _{ac} /yr)	Capacity Factor (%)	Annual Generation (MWh _{ac} /yr)	Capacity Factor (%)
Seattle, WA	727930	12,100	13.8	14,400	16.5
Cleveland, OH	725240	13,000	14.8	15,300	17.5
Boston, MA	725090	14,300	16.4	17,000	19.4
Des Moines, IA	725460	15,400	17.6	18,800	21.4
Topeka, KS	724560	15,600	17.8	19,000	21.7
Atlanta, GA	722190	15,800	18.1	18,800	21.5
Dallas, TX	722590	16,600	19.0	20,100	22.9
Denver, CO	725650	16,900	19.3	20,700	23.6
San Diego, CA	722900	18,100	20.6	21,600	24.7
Phoenix, AZ	722780	19,500	22.2	24,200	27.6

generation. The white bars in Figure 2(a) represent the total annual reduction in emissions at each site. These results show that the best solar resources do not, in fact, lead to the highest CO₂ mitigation.

Figure 2(b) shows the results of offset SO₂ emissions intensity and total annual SO₂ mitigation for each of the sites. These results demonstrate an even greater disparity across the regions, with the offset SO₂ emissions intensity ranging from 30 g SO₂/MWh in California to 1.5 kg SO₂/MWh in Ohio. The regional disparities shown in Figure 2 (b) are driven by different sulfur contents of coal that are predominantly used in each region, the prevalence of flue gas desulfurization, and—more generally—the share of offset generation attributable to coal. Figure 2(c) shows the results for NO_x emissions. Compared to SO₂ emissions, the range of outcomes for offset NO_x emissions is considerably smaller, with the offset emissions intensities ranging from 230 to 690 g NO_x/MWh. Again, we see that the sites with the largest emission reductions are not necessarily those with the superior solar resource.

To illustrate the role of both the solar capacity factor and the offset emissions intensity, Figure 3 shows the results for each site in the context of the total offset emissions per unit of installed capacity. The x-axis represents solar resource quality (i.e., the project's capacity factor); the y-axis represents the offset emissions intensity of the grid, and the bands of solid colors represent the total annual offset emissions per unit of installed solar capacity. These figures illustrate that greater emission reductions can be achieved with higher resource quality, by offsetting higher polluting generation, or both.

Figure 3(a) shows that a few of the solar projects that resulted in the lowest offset CO₂ emissions had mid-range (e.g., MA) or even high (e.g., CA) capacity factors, but their effectiveness in reducing emissions was limited by the relatively low carbon intensity of the offset emissions. The sites that reduced the greatest total CO₂ (IA, KS, and CO) were all sites that yielded mid-range capacity factors but offset highly carbon-intensive generation.

As shown in Figure 3(b), the solar resource quality is not a key driver in the reduction of SO₂ emissions. The mitigation of SO₂ by solar power is largely determined by the grid characteristics, namely the regions in the United States that have a higher share of generation from high-sulfur coal. The solar site examined in Ohio offsets generation with a considerably higher SO₂ emissions intensity than the other sites, yielding far greater total SO₂ reductions despite the poor solar resource quality. The solar projects in the western United States, including Colorado, California, and Arizona, offset very little SO₂ despite the high solar capacity factors due to the low SO₂ emissions intensity of the grid in those regions.

Figure 3(c) illustrates that both solar resource quality and the region's offset emissions intensity are both determinants in the magnitude of NO_x emission reductions. Both coal and natural gas generation emit NO_x, although coal-fired generation typically has higher NO_x emissions rates.¹⁹ We see in Figure 3 (c) that the sites with the greatest overall NO_x emissions are those with high offset emissions intensity (e.g., OH, IA, KS), those with the best solar quality (e.g., AZ), and both (e.g., CO).

Figures 2 and 3 examine the impact of a 10 MW_{dc} *fixed tilt* solar installation. As reported in

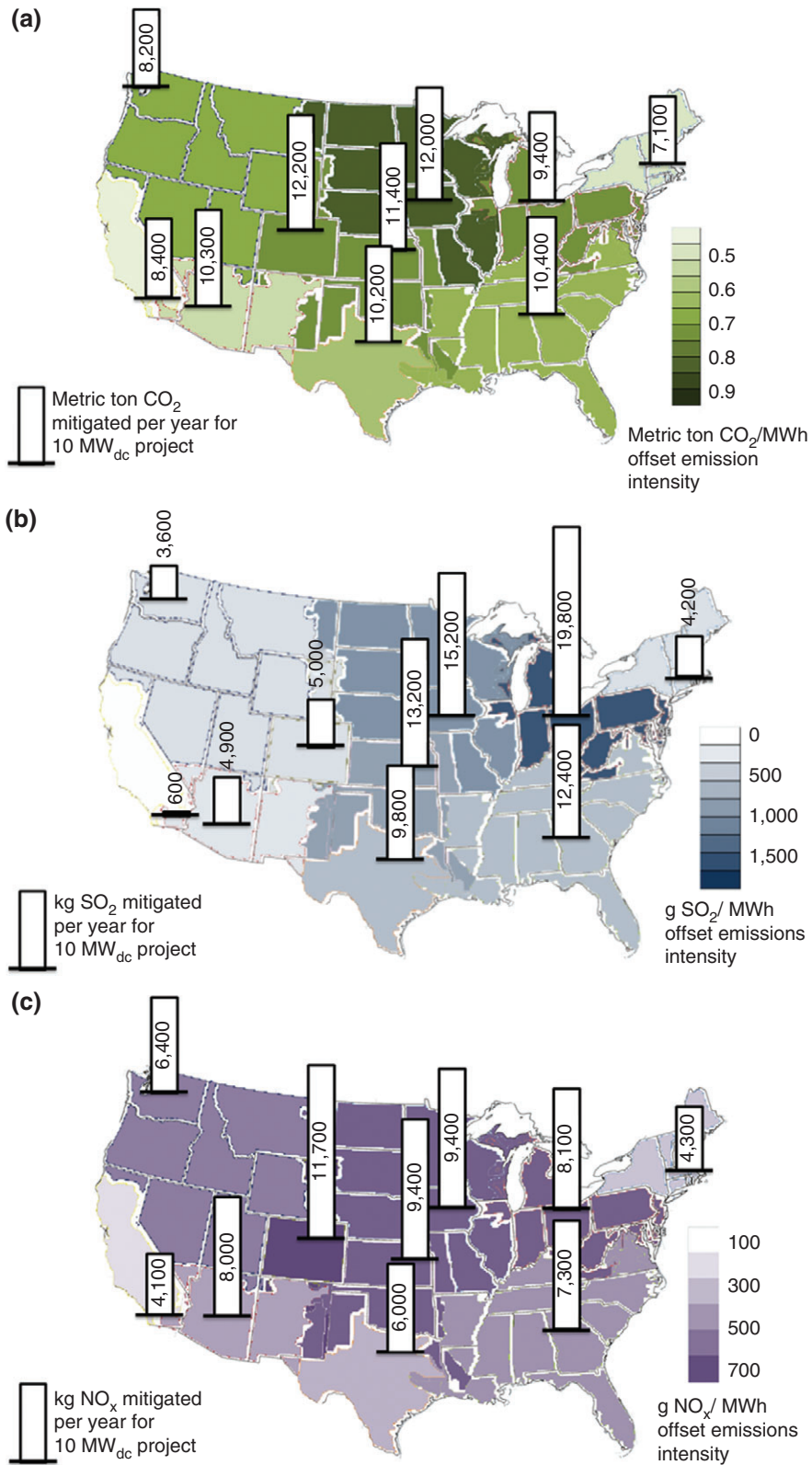


FIGURE 2 | Offset emissions intensity and total emissions mitigation from a 10 MWdc solar photovoltaic installation with fixed tilt set to latitude for (a) CO₂, (b) SO₂, and (c) NO_x, indicative of 2015.

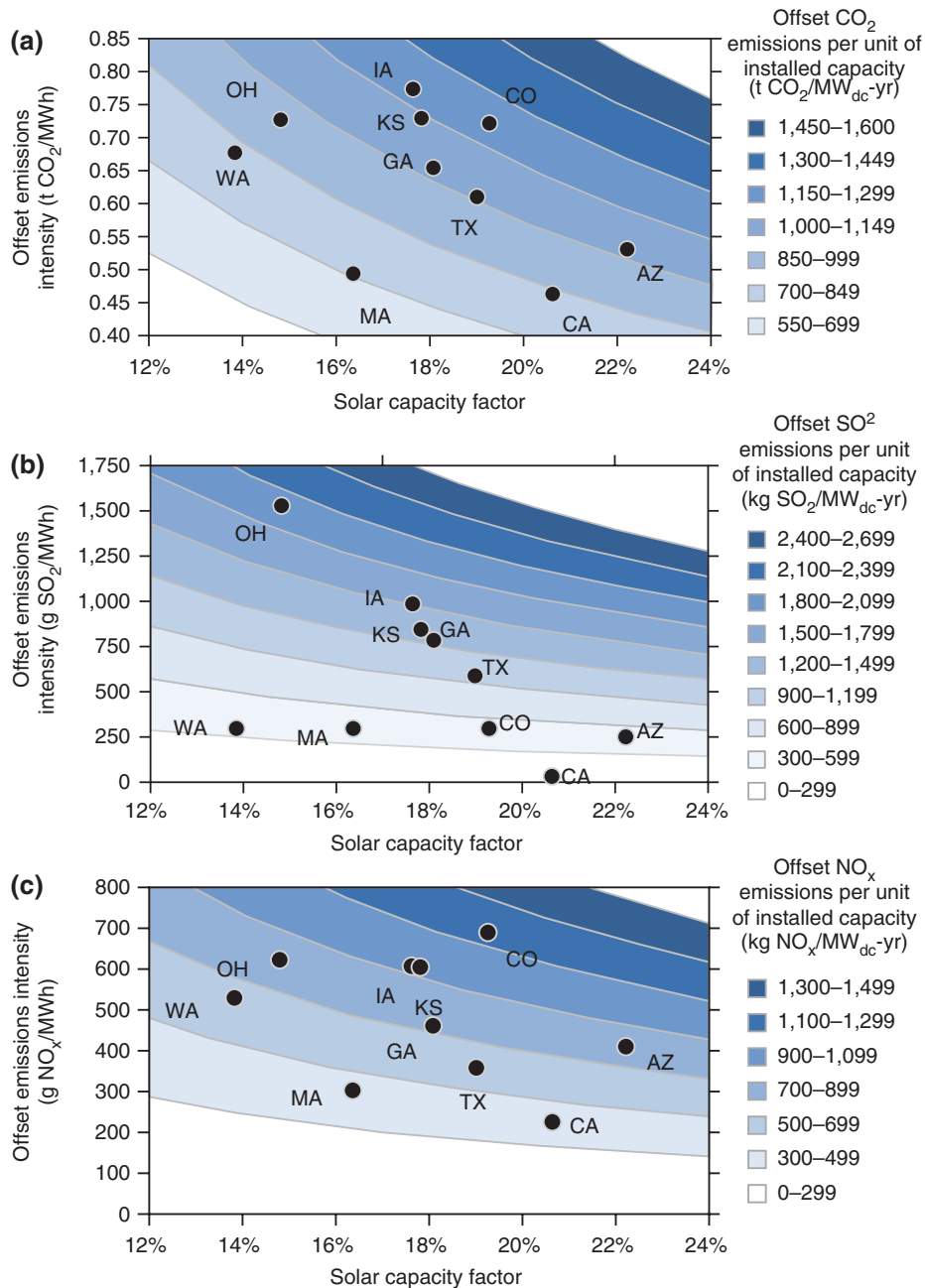


FIGURE 3 | Annual emissions reduction, as driven by offset emissions intensity and solar capacity factor, assuming a solar configuration with fixed tilt equal to latitude. Results show (a) CO₂, (b) SO₂, and (c) NO_x, indicative of 2015.

Table 1, moving from a fixed tilt configuration to a single-axis tracking system would increase generation by 18–24%. The horizontal axis-tracking system modeled allows for east–west tracking, which serves to decrease the angle of incidence and increase generation throughout the day. This increased generation serves to offset more fossil fuel-fired generation, thereby reducing overall emissions.

As shown in Figure 4, the introduction of the tracking system increases the projects’ capacity

factor, although the magnitude of that increase varies by location. The altered diurnal profiles of these projects are not found to have a meaningful impact on the offset emissions intensity. Across all 10 sites, the offset emissions intensity changed by less than 2% for CO₂ (Figure 4(a)), SO₂ (Figure 4(b)), and NO_x (Figure 4(c)), as shown by the near-horizontal lines from fixed tilt to single-axis tracking. This suggests that, when seeking to mitigate power sector emissions, the impacts of solar design considerations on

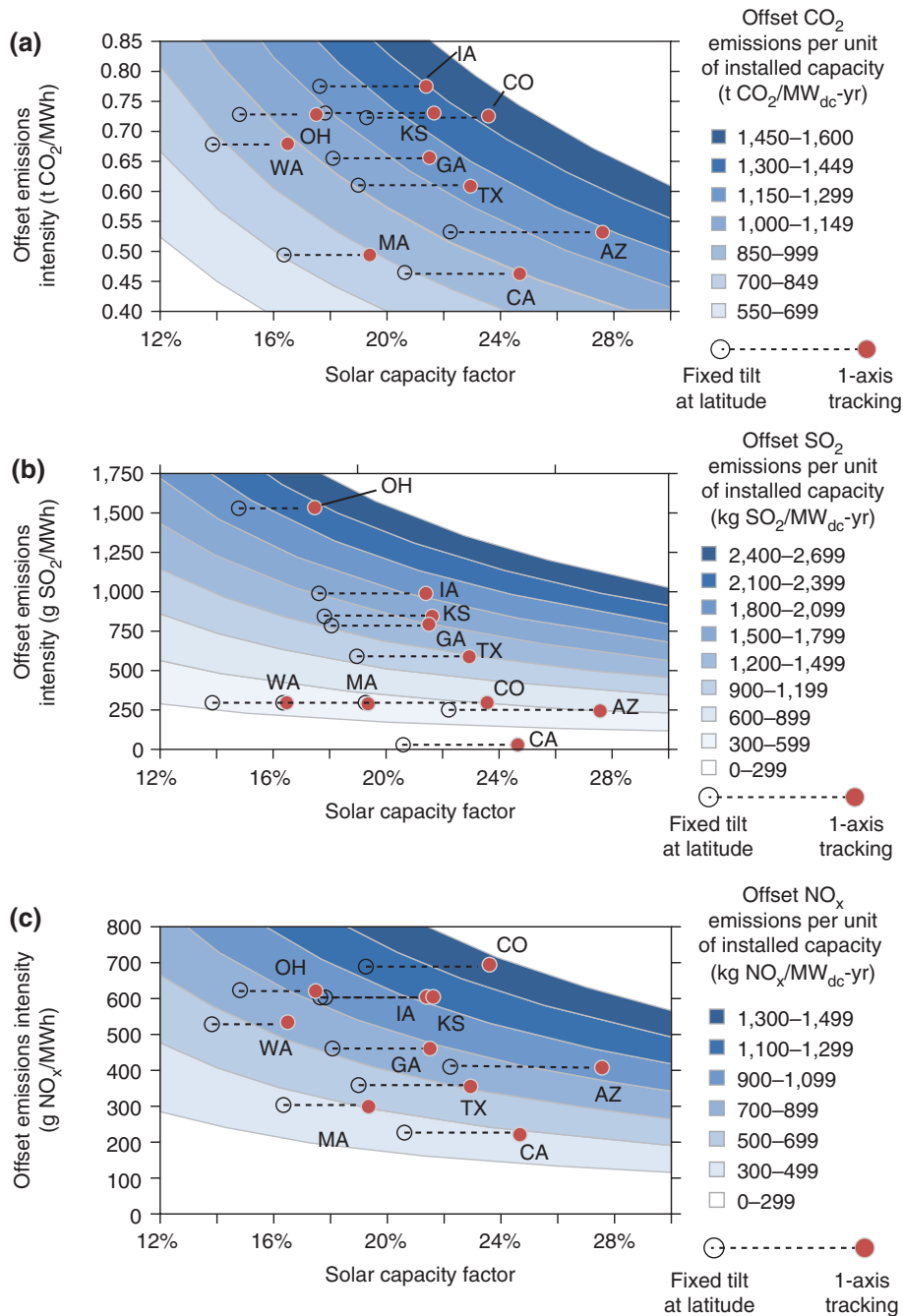


FIGURE 4 | Annual emissions reduction, as driven by offset emissions intensity and solar capacity factor, assuming a single-axis tracking solar installation in 2015. Results show (a) CO₂, (b) SO₂, and (c) NO_x.

the temporal profile of generation are less important than the overall amount of solar generation and the location of interconnection.

The offset emissions intensity for each of the three pollutants is largely driven by the share of coal generation that is displaced, as determined by the AVERT model. Figure 5 explores the relationship between the emissions intensity of offset generation

and the proportion of coal generation offset to total solar generation. In Figure 5(a), we see a strong correlation between CO₂ offset emissions intensity and the proportion of offset generation that is coal. The linear trend line suggests that solar which offsets no coal generation ($x = 0$) would yield an offset emissions intensity of 0.45 t CO₂/MWh, a value that is representative of emissions from a moderately efficient natural gas

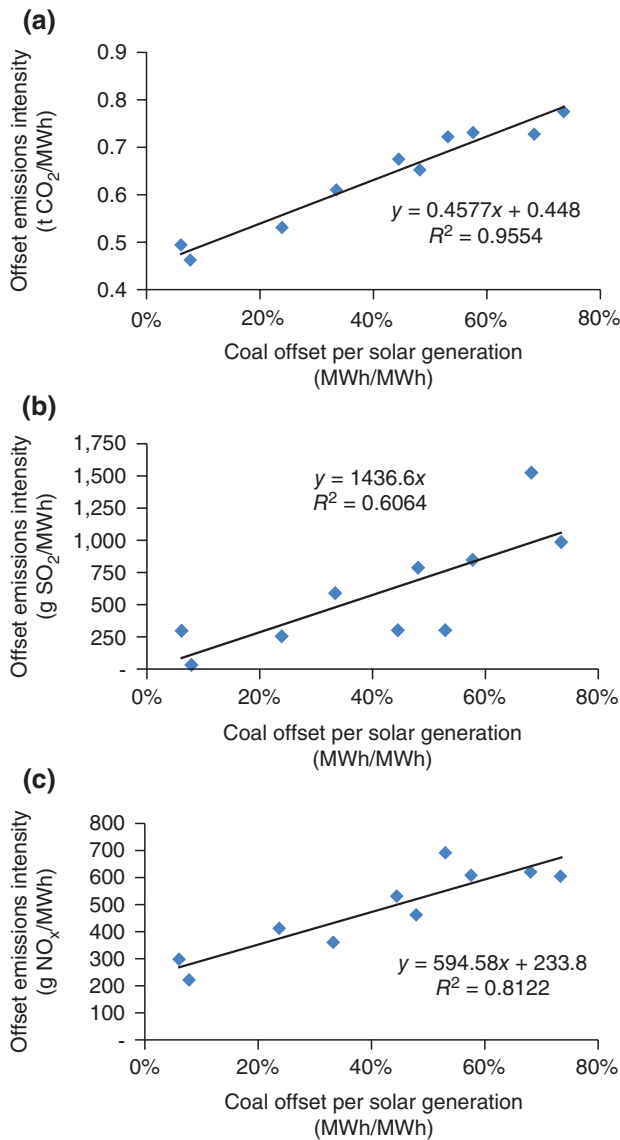


FIGURE 5 | Relationship between offset emissions intensity and the proportion of coal offset per unit of solar generation, for (a) CO₂, (b) SO₂, and (c) NO_x.

plant. At the other end of the spectrum, offsetting coal alone ($x = 1$) would yield an offset emissions factor of 0.91 t CO₂/MWh, over twice as high.

As shown in Figure 5(b), the correlation between the offset SO₂ emissions intensity and the proportion coal generation offset is not as strong as the comparable relationship for CO₂. SO₂ emissions are driven predominately by coal generation, but the emissions from a given plant can vary greatly based on the sulfur content of the coal and the presence or absence of emissions controls equipment (e.g., flue gas desulfurization).

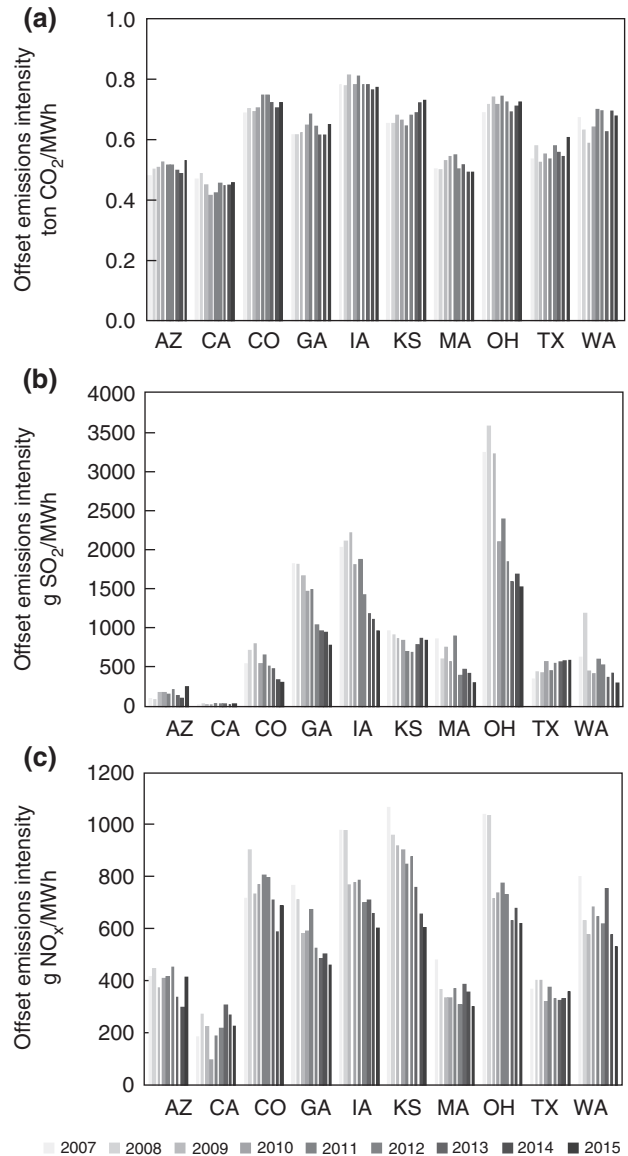


FIGURE 6 | Annual trends in offset emissions intensity from solar photovoltaic generation (fixed tilt at latitude), for (a) CO₂, (b) SO₂, and (c) NO_x.

Figure 5(c) shows the correlation between offset NO_x emission intensity and the proportion coal generation offset. Both coal and natural gas generation lead to thermal NO_x, while coal generation also emits fuel NO_x.¹⁹ Emissions control technologies and operational strategies at these plants can reduce emissions, leading to a wide range of emissions factors for a given plant type. Despite this complicating factor, this analysis does show a clear upward trend, with more NO_x reduction achieved when more coal generation is displaced.

Figure 6 shows the changes in the offset emissions intensity from fixed tilt solar generation over time, from 2007 through 2015. As is shown in Figure 6(a), the offset CO₂ emissions intensity did not change substantially during this period of time, with many regions resulting in a net increase on the CO₂ intensity of offset generation. From 2007 to 2015, the net changes in offset CO₂ emissions intensity ranged from decreases of 3% to increases of 13%. During this same time period, overall CO₂ emissions from electricity generation in the United States dropped 21%, while total generation only decreased by 1.9%,²⁰ yielding a decrease in the sector-wide CO₂ emissions intensity of 19.6%. This marked decrease in total CO₂ emissions intensity stands in stark contrast to the increases or modest decreases in changes in CO₂ offset emissions intensity from solar generation. Solar generation occurs during daylight hours and offsets marginal generation. The changes occurring in the power sector, such as the addition of wind and solar generation and the shift from coal to natural gas generation, appear to have not decreased the marginal emissions intensity during hours of solar generation.

Figure 6(b) shows that the offset SO₂ emissions intensity from solar generation did, for many regions, decrease considerably. While some regions with very low SO₂ emissions factors saw a net increase (e.g., CA and AZ), the regions with the highest SO₂ factors saw large declines, with OH, IA, and GA decreasing by over 50%. These decreases were driven by acid rain regulations that required flue gas desulfurization or the use of low sulfur fuels. Figure 6(c) shows near universal decreases in the offset NO_x emissions intensity from solar generation. Out of 10 regions, 9 saw a decrease in values, with an average decrease of 22%.

CONCLUSIONS

This analysis demonstrated that power grid characteristics can play an important role in the environmental benefits of a grid-connected solar project. Two identical solar projects sited in different locations can, and likely would, yield vastly different levels of emissions reduction. Because a commonly stated goal of increasing the share of renewables on the grid is to reduce environmental impacts, it is essential to consider the context and power system characteristics into which a solar project is being integrated.

In the United States, public policy that seeks to increase renewable generation typically does not consider the importance of power grid characteristics

and the offset emissions intensity. Among the most important and effective public policies to support renewables have been the state-level Renewable Portfolio Standards (RPS). While they vary by state, a typical design for an RPS is to set a percent of electricity sales that must be met by qualified renewable generation. While such a design has led to increased renewable generation and environmental benefits,^{21,22} there are two key reasons why these policies may not maximize the offset emissions from new renewables. First, the states that have enacted RPS policies are not necessarily those with the highest grid emissions intensities. Research has shown that a key driver for the enactment of an RPS is a state's political ideology or private interests, not necessarily environmental benefits or job creation.²³ That said, despite the fact that it may be more cost effective to mitigate emissions by funding renewable energy in another state, such efforts may be politically untenable due to the expectation of the development of local resources. Secondly, the design of most RPS policies set renewables targets as a share of retail sales. To achieve these targets, load serving entities do not need to consider the type of generation that is being offset. The marginal emissions factor for a region may be significantly higher during offpeak hours, making wind more effective at emissions mitigation, but that information would be irrelevant to successfully meeting the targets of the RPS under such a design. By the nature of their design, the fact that they are state-level policies, and the multiple objectives that they may be seeking to meet, RPS policies can be a suboptimal means of deploying renewables to reduce emissions.

Other U.S. policies designed to encourage the development of renewables provide financial incentives. Solar development has been incentivized by both the investment tax credit (ITC) and accelerated depreciation schedules. The ITC provides developers with a tax credit equal to a set percentage of the qualified investment costs of the solar project, while accelerated depreciation allows businesses to deduct the depreciable basis of a project over a shorter time frame. These incentives have been critical to many projects' viability but are awarded based on project costs and are blind to the emissions reduction benefits.

Many analyses of the environmental impacts of changes to power system simply assume a 'grid average' emissions intensity.¹⁰ As illustrated in Ryan et al., this approach is not appropriate when the research question seeks to understand the impact of a 'change in' grid operations. Average emissions factors include generation from nuclear and renewables—generation

types that are typically not offset by the introduction of new solar generation. Understanding the consequential impacts and the net change in emissions as we have done here is essential to effectively characterize the environmental benefits of a solar project.

This study examines emissions impacts from solar photovoltaics over the past decade. It is also important to consider future changes to grid infrastructure when discussing the long-term environmental implications of a solar project. If current US trends continue, and we see coal plant retirements far outpacing any new coal development, we may expect the offset emissions intensity for each of the regions to move toward the emissions intensity for a natural gas plant. If this occurred, this would require more installed solar capacity to displace the same amount of emissions.

However, as illustrated for the period of 2007–2015 for CO₂ emissions, decreasing sector-wide emissions intensities do not necessarily yield a direct relationship to the offset emissions from solar generation. Despite a nearly 20% decrease in the overall CO₂ emissions intensity from US electricity production, the offset emissions intensity attributable to solar generation increased in many regions. This is likely due to the fact that the key drivers that pushed down the overall emissions intensity, such as the introduction of wind and solar power as well as coal-to-gas switching, did not change the marginal emissions intensity during hours of solar generation in the same direction or magnitude.

This study demonstrated that different diurnal profiles between fixed tilt and single-axis tracking had little impact on the offset emissions intensity of the grid. This result may be reasonably extended to

other solar project design considerations, such as the recent trend of increasing inverter-loading ratios.²⁴ Increasing the inverter-loading ratio (i.e., the ratio of DC module capacity to AC inverter capacity) serves to ‘flatten out’ mid-day generation, yielding a diurnal profile that is similar to east-to-west single-axis tracking.²⁵ Further research is needed to better understand the impacts of other solar project design considerations as well as the impacts from introducing energy storage or wind power.

While solar resource quality is a key driver to determine generation, which in turn influences emissions mitigation, the role of project siting and regional grid characteristics are often overlooked when considering the environmental merits of a renewable project. Siting and the time of day of solar generation are also determinants of the value of the offset energy and the economic attractiveness of potential projects. By coupling the findings on offset emissions, as shown in this study, with an economic analysis that quantifies the net change in system costs due to the project, we can calculate the cost of emissions mitigation. Such analyses would determine the most cost-effective means of reducing emissions through the use of new solar generation. Current policies that focus solely on the magnitude of renewable generation or the installed cost of renewable projects are likely an inefficient means to reduce system-wide emissions. Renewed attention to siting and particular attention to the grid configuration at the point of interconnection could ensure that more informed decisions are made with respect to the emissions mitigation potential of solar power.

REFERENCES

1. Siler-Evans K, Azevedo IL, Morgan MG. Marginal emissions factors for the US electricity system. *Environ Sci Technol* 2012, 46:4742–4748.
2. Siler-Evans K, Azevedo IL, Morgan MG, Apt J. Regional variations in the health, environmental, and climate benefits of wind and solar generation. *Proc Natl Acad Sci USA* 2013, 110:11768–11773.
3. Callaway D, Fowle M, McCormick G. Location, location, location: the variable value of renewable energy and demand-side efficiency resources. University of California at Berkeley; 2015.
4. Valentino L, Valenzuela V, Botterud A, Zhou Z, Conzelmann G. System-wide emissions implications of increased wind power penetration. *Environ Sci Technol* 2012, 46:4200–4206.
5. Cullen J. Measuring the environmental benefits of wind-generated electricity. *Am Econ J Econ Policy* 2013, 5:107–133.
6. Kaffine DT, McBee BJ, Lieskovsky J. emissions savings from wind power generation in Texas. *Energy J* 2013, 34:155–175.
7. Novan K. Valuing the wind: renewable energy policies and air pollution avoided. *Am Econ J Econ Policy* 2015, 7:291–326.
8. Chiang AC, Moore MR, Johnson JX, Keoleian GA. Emissions reduction benefits of siting an offshore wind

- farm: a temporal and spatial analysis of Lake Michigan. *Ecol Econ* 2016, 130:263–276.
9. Kerl PY, Zhang W, Moreno-Cruz WB, Nenes A, Realff MJ, Russell AG, Sokol J, and Thomas VM. New approach for optimal electricity planning and dispatching with hourly time-scale air quality and health considerations. *Proc Natl Acad Sci USA* 2015, 112:10884–10889.
 10. Ryan NA, Johnson JX, Keoleian GA. Comparative assessment of models and methods to calculate grid electricity emissions. *Environ Sci Technol* 2016, 50: 8937–8953.
 11. U.S. Environmental Protection Agency. eGRID 9th edition version 1.0, Year 2010 Summary Tables; 2014.
 12. Zivin JSG, Kotchen MJ, Mansur ET. Spatial and temporal heterogeneity of marginal emissions: implications for electric cars and other electricity-shifting policies. *J Econ Behav Organ* 2014, 107:248–268.
 13. Tamayao M-AM, Michalek JJ, Hendrickson C, Azevedo IML. Regional variability and uncertainty of electric vehicle life cycle CO₂ emissions across the United States. *Environ Sci Technol* 2015, 49:8844–8855.
 14. MacPherson ND, Keoleian GA, Kelly JC. Fuel economy and greenhouse gas emissions labeling for plug-in hybrid vehicles from a life cycle perspective. *J Ind Ecol* 2012, 16:761–773.
 15. National Solar Radiation Data Base. Typical Meteorological Year 3 (TMY) data set; 2012.
 16. National Renewable Energy Laboratory. System Advisor Model, version 2015.6.30; 2015.
 17. Bolinger M, Seel J. Utility scale solar 2015: an empirical analysis of project cost, performance, and pricing trends in the United States. Lawrence Berkeley National Laboratory; 2016.
 18. U.S. Environmental Protection Agency. Avoided Emissions and Generation Tool (AVERT); 2016.
 19. Cooper CD, Alley FC. *Air Pollution Control: A Design Approach*. Long Grove, IL USA: Waveland Press; 2002.
 20. U.S. Energy Information Administration. Monthly Energy Review; 2017. Available at: <https://www.eia.gov/totalenergy/data>. (Accessed March 1, 2017).
 21. Barbose G, Bird L, Heeter J, Flores-Espino F, Wiser R. Costs and benefits of renewables portfolio standards in the United States. *Renew Sustain Energy Rev* 2015, 52:523–533.
 22. Barbose G, Wiser R, Heeter J, Mai T, Bird L, Bolinger M, Carpenter A, Heath G, Keyser D, Macknick J et al. A retrospective analysis of benefits and impacts of US renewable portfolio standards. *Energy Policy* 2016, 96:645–660.
 23. Lyon TP, Yin H. Why do states adopt renewable portfolio standards? an empirical investigation. *Energy J* 2010, 31:133–157.
 24. Utility-scale solar 2015: an empirical analysis of project cost, performance, and pricing trends in the United States; 2016.
 25. Good J, Johnson JX. Impact of inverter loading ratio on solar photovoltaic system performance. *Appl Energy* 2016, 177:475–486.