

**SUPPLEMENTARY MATERIAL**

**Table S1.** Comparison of CARES Patients Linked and Not Linked to Medicare Files.

	Linked to Medicare Files		Total	P-Value
	Yes n = 2206	No n = 1738	n = 3944	
Age, mean $\pm$ SD	76.5 $\pm$ 7.8	76.6 $\pm$ 8.1	76.6 $\pm$ 7.9	0.83
Age, years				0.19
65 to <75	43.8%	45.5%	44.5%	
75 to <85	37.9%	35.0%	36.6%	
85 to 109	18.4%	19.4%	18.8%	
Sex				0.92
Female	43.7%	43.9%	43.8%	
Male	56.3%	56.1%	56.2%	
Race				0.09
White	72.2%	69.2%	70.9%	
Black	20.6%	21.6%	21.0%	
Other	7.2%	9.2%	8.1%	
Location of Arrest				0.93
Home/Residence	63.7%	62.4%	63.1%	
Nursing Home	14.1%	14.6%	14.3%	
Public area	11.4%	12.0%	11.6%	
Hospital or healthcare facility	4.6%	4.6%	4.6%	
Other	6.2%	6.5%	6.3%	
Witnessed arrest	66.3%	65.0%	65.7%	0.39
CPR initiated by:				0.27
First responder	31.7%	32.6%	32.1%	
Bystander	34.2%	35.6%	34.8%	
Responding EMS personnel	34.2%	31.8%	33.1%	
Use of public access AED	27.9%	29.6%	28.7%	0.24
Who first applied AED				0.46
First Responder	36.6%	36.2%	36.4%	
Responding EMS	58.5%	58.0%	58.3%	
Bystander	4.9%	5.8%	5.3%	
Initial cardiac arrest rhythm				0.67
Asystole	27.6%	28.4%	28.0%	
Pulseless electrical activity	26.4%	27.9%	27.0%	
Indeterminate unshockable rhythm	10.2%	9.4%	9.8%	
Ventricular fibrillation	25.4%	24.2%	24.8%	
VT or indeterminate shockable rhythm	10.5%	10.1%	10.3%	

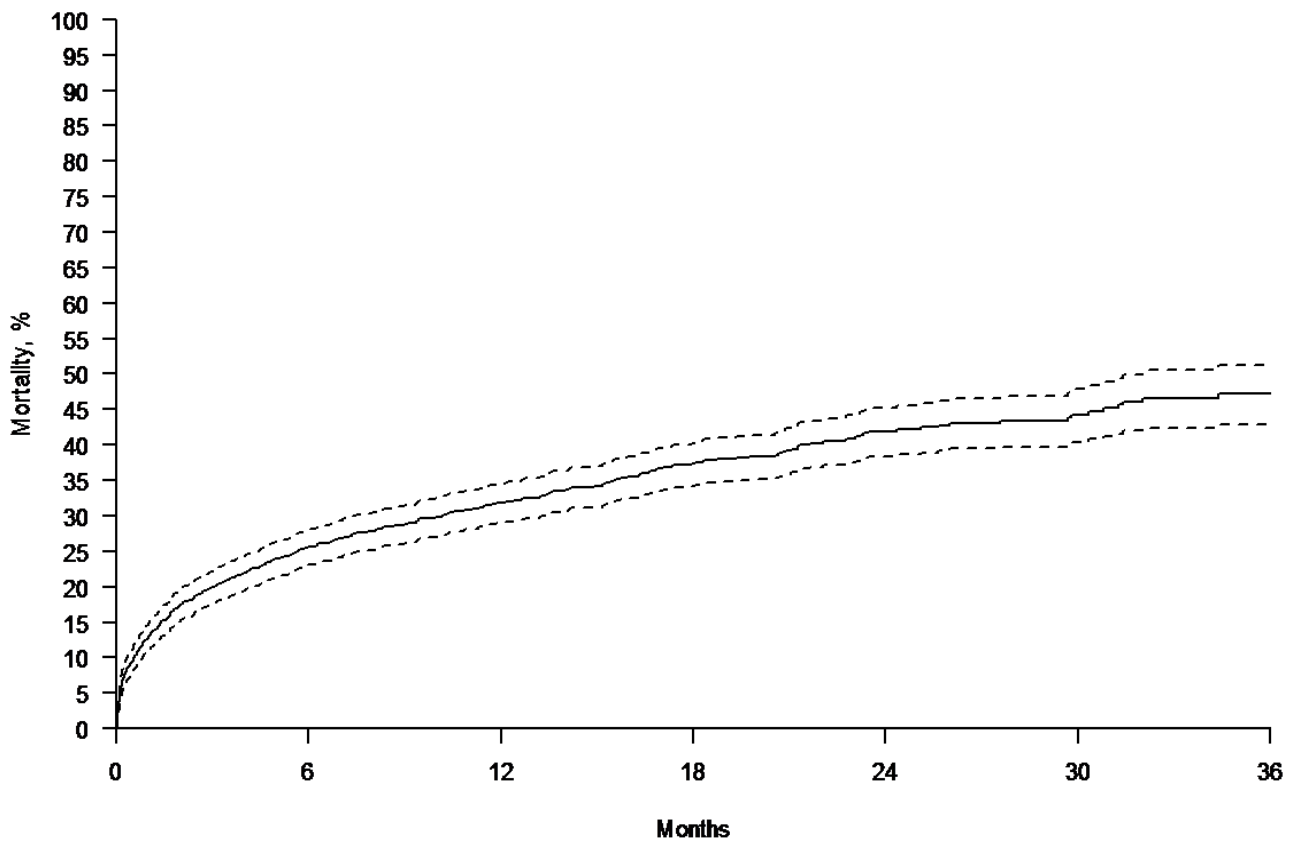
	Linked to Medicare Files		Total	P-Value
	Yes n = 2206	No n = 1738	n = 3944	
Discharge neurological status				0.90
Mild to no disability (CPC score 1)	51.2%	53.4%	52.1%	
Moderate disability (CPC score 2)	25.2%	23.2%	24.3%	
Severe disability (CPC score 3)	14.7%	14.1%	14.4%	
Coma or vegetative state (CPC score 4)	8.9%	9.3%	9.1%	
Missing	83	111	194	

Abbreviations: AED, automated external defibrillator; CPC, cerebral performance category; CPR, cardiopulmonary resuscitation; EMS, emergency medical services; SD, standard deviation; VT, ventricular tachycardia

**Table S2.** Three-Year Mortality for Pre-Specified Subgroups

<b>Variable</b>	<b>Unadjusted 3-Year Mortality</b>	<b>Adjusted HR (95% CI)</b>	<b>P value</b>
<b>Sex</b>			
Women	44.8%	Reference	Reference
Men	50.8%	1.07 (0.86-1.32)	0.56
<b>Race</b>			
White	45.0%	Reference	0.44
Black	56.2%	1.17 (0.91-1.50)	
Other	36.9%	0.96 (0.62-1.48)	
<b>Initial cardiac arrest rhythm</b>			
Asystole	52.7%	Reference	0.51
Pulseless electrical activity	52.9%	1.15 (0.87-1.51)	
Indeterminate unshockable rhythm	53.2%	1.46 (0.95-2.25)	
Ventricular fibrillation	41.9%	1.13 (0.84-1.53)	
VT or indeterminate shockable rhythm	36.7%	1.10 (0.69-1.76)	
<b>Person initiating CPR</b>			
First responder	48.8%	Reference	<0.001
Bystander	44.3%	0.82 (0.63-1.07)	
EMS personnel	47.0%	0.69 (0.53-0.90)	
<b>Discharge Neurological Status</b>			
Mild to no disability	33.7%	Reference	<0.001
Moderate disability	34.7%	0.77 (0.52-1.15)	
Severe disability	70.2%	1.98 (1.35-2.91)	
Coma or vegetative state	75.4%	1.80 (1.14-2.84)	
<b>Discharge disposition</b>			
Home self-care	24.2%	Reference	<0.001
Home with home health care	40.9%	1.59 (1.08-2.34)	
Skilled nursing or intermediate care	65.2%	3.60 (2.59-4.99)	
Inpatient rehabilitation facility	60.1%	3.49 (2.55-4.77)	
Hospice	96.3%	34.0 (23.3-22.7)	

Abbreviations: CPR, cardiopulmonary resuscitation; EMS, emergency medical services; HR, hazard ratio; VT, ventricular tachycardia



Months	1	6	12	18	24	30	36
Mortality Rate	12.7%	25.7%	31.8%	37.3%	41.9%	44.3%	47.2%

**Figure S1.** Kaplan-Meier Estimates of Mortality Among Survivors of Out-of-Hospital Cardiac Arrest. The accompanying table provides estimated percentage rates for mortality for different follow-up time points.