

Received Date: 08-Nov--2016

Revised Date: 26-Feb-2017

Accepted Date: 01-Mar-2017

Article Type: Original Article

Subject category: Imaging

**Ranolazine in symptomatic diabetic patients without obstructive coronary artery disease:
impact on microvascular and diastolic function (RAND-CFR)**

Running title: *Shah et al.; Ranolazine on microvascular & diastolic function*

Nishant R. Shah, MD, MPH, MSc^{a,b}; Michael K. Cheezum, MD^a; Vikas Veeranna, MD^a; Stephen J. Horgan, MD, PhD^a; Viviany R. Taqueti, MD, MPH^a; Venkatesh L. Murthy, MD, PhD^c; Courtney Foster, MS, CNMT^a; Jon Hainer, BS^a; Karla M. Daniels, MS^a; Jose Rivero, MD^a; Amil M. Shah, MD, MPH^a; Peter H. Stone, MD^a; David A. Morrow, MD, MPH^a; Michael L. Steigner, MD^a; Sharmila Dorbala, MD, MPH^a; Ron Blankstein, MD^a; Marcelo F. Di Carli, MD^a

^aFrom the Noninvasive Cardiovascular Imaging Program, Heart and Vascular Institute, Division of Cardiovascular Medicine, Department of Medicine, Division of Nuclear Medicine and Molecular Imaging, Department of Radiology, Brigham and Women's Hospital, Harvard Medical School, Boston, MA, ^bFrom the Lifespan Cardiovascular Institute, Division of Cardiovascular Medicine, Department of Medicine, Brown University Alpert School of Medicine, Providence, RI, ^cFrom the Divisions of Nuclear Medicine, Cardiothoracic Imaging, and Cardiovascular Medicine, Departments of Medicine and Radiology, University of Michigan, Ann Arbor, MI

Address for Correspondence

Marcelo F. Di Carli, MD

Brigham & Women's Hospital

ASB-L1 037-C

This is the author manuscript accepted for publication and has undergone full peer review but has not been through the copyediting, typesetting, pagination and proofreading process, which may lead to differences between this version and the [Version of Record](#). Please cite this article as [doi: 10.1177/0885066616666666](#)

This article is protected by copyright. All rights reserved

75 Francis St., Boston, MA 02115

Tel: 617-732-6291

Fax: 617-582-6056

E-mail: mdicarli@partners.org

Journal Subject Terms: Nuclear cardiology and PET; Coronary circulation; Diabetes, Type 2

ABSTRACT

Background. Treatments for patients with myocardial ischemia in the absence of angiographic obstructive coronary artery disease (CAD) are limited. In these patients, particularly those with diabetes, diffuse coronary atherosclerosis and microvascular dysfunction is a common phenotype and may be accompanied by diastolic dysfunction. Our primary aim was to determine whether ranolazine would quantitatively improve exercise-stimulated myocardial blood flow (MBF) and cardiac function in symptomatic diabetic patients without obstructive CAD.

Methods and Results. We conducted a double-blinded cross-over trial with 1:1 random allocation to the order of ranolazine and placebo. At baseline and after each 4-week treatment arm, left ventricular MBF and coronary flow reserve (CFR; primary endpoint) were measured at rest and after supine bicycle exercise using ^{13}N -ammonia myocardial perfusion PET. Resting echocardiography was also performed. Multilevel mixed-effects linear regression was used to determine treatment effects. Thirty-five patients met criteria for inclusion. Ranolazine did not significantly alter rest or post-exercise left ventricular MBF or CFR. However, patients with lower baseline CFR were more likely to experience improvement in CFR with ranolazine ($r=-0.401$, $p=0.02$) than with placebo ($r=-0.188$, $p=0.28$). In addition, ranolazine was associated with an improvement in E/septal e' ($p=0.001$) and E/lateral e' ($p=0.01$).

Conclusions. In symptomatic diabetic patients without obstructive CAD, ranolazine did not change exercise-stimulated MBF or CFR but did modestly improve diastolic function. Patients with more severe baseline impairment in CFR may derive more benefit from ranolazine.

Clinical trial registration Information. ClinicalTrials.gov. Identifier: NCT01754259.

Key words: Randomized controlled trial, diabetes mellitus, microvascular dysfunction, positron emission tomography, ranolazine.

INTRODUCTION

Myocardial ischemia in the absence of angiographic obstructive coronary artery disease (CAD) poses a significant management challenge for patients and providers. This clinical scenario is frequently encountered in clinical practice¹, particularly in women², and is associated with increased risk of adverse cardiovascular events and disability.^{3,4} Diffuse coronary atherosclerosis and microvascular dysfunction is a common phenotype in these patients and may be accompanied by diastolic dysfunction.⁵ These associations are especially evident among high risk cohorts, including patients with diabetes⁶ and patients with chronic renal impairment.^{7,8} In diabetics, diffuse coronary vascular dysfunction precedes overt atherosclerosis⁹, and the absence of traditionally-defined myocardial ischemia does not necessarily correspond to lower risk.¹⁰ Importantly, current treatment strategies for obstructive epicardial CAD, such as percutaneous angioplasty and stenting, are ineffective for diffuse CAD and microvascular dysfunction.

Ranolazine is a novel anti-anginal agent^{11,12} that, under ischemic conditions, inhibits the late sodium current in cardiomyocytes and thereby decreases sodium and calcium overload. Excess intracellular calcium may impair myocyte relaxation and contribute to ventricular diastolic stiffness, which in turn affects myocardial contractility and perfusion.^{13,14} Although ranolazine's mechanism of action is thought to be mediated in part by increased myocardial blood flow (MBF)¹⁵, prior studies utilizing vasodilator stress protocols have shown conflicting data regarding this hypothesis^{16,17} and no prior study has tested it with an exercise stress protocol.

Accordingly, we conducted a randomized, double-blind, placebo-controlled, 2-way crossover trial in symptomatic diabetic patients without obstructive CAD to test the hypothesis that treatment with ranolazine would quantitatively improve exercise-related MBF and cardiac function.

METHODS

Study Design

The study was a randomized, double-blinded, cross-over trial with 1:1 random allocation to the order of ranolazine and placebo. The washout period between treatment arms was 3 days, representing ~10 times the terminal half-life of ranolazine (7 hours). **Figure 1** shows the study flow chart. At each of the 3 study visits, patients underwent a blood draw, a 12-lead electrocardiogram, a standard resting transthoracic echocardiogram, and dynamic supine bicycle exercise stress-rest myocardial perfusion positron emission tomography (PET). Serum biomarkers included N-terminal pro-B-type natriuretic peptide (NT-proBNP) and high-sensitivity C-reactive protein (hsCRP). For safety monitoring, plasma glucose, hemoglobin A1c, lipid panels, complete blood count, renal and liver function panels were also obtained at each visit.

Patient Population

Brigham & Women's Hospital provider patient panels were screened to identify patients with diabetes, stable angina and/or exertional dyspnea, and exercise tolerance of at least 3 metabolic equivalents on a treadmill or bicycle exercise tolerance test. Patients with obstructive CAD (defined as $\geq 50\%$ luminal stenosis) on clinically-indicated invasive coronary angiography or coronary CT angiography within 1 year prior to study screening were excluded, as were those with a history of cardiomyopathy (left ventricular ejection fraction $< 40\%$), moderate-severe valvular heart disease, uncontrolled hypertension (systolic blood pressure > 180 mm Hg), renal impairment (estimated glomerular filtration rate < 50 ml/min/1.73 m²), and/or a contraindication to ranolazine. Patients already taking ranolazine for clinical indications were also excluded. Qualifying patients were contacted by phone to request voluntary participation in the study. Consistent with prior ranolazine trials¹⁸⁻²⁰, patient symptoms at baseline were confirmed using the Seattle Angina Questionnaire (i.e., score < 100)²¹ and the Rose Dyspnea Scale (i.e., score > 0).²² If patients had not undergone invasive or CT coronary angiography within 1 year, we performed screening coronary CT angiography and excluded any patients with $\geq 50\%$ luminal stenosis from further study participation. The study was approved by the Partners Healthcare Institutional Review Board and registered at ClinicalTrials.gov (NCT 01754259). All study patients gave written informed consent.

Randomization

The order of ranolazine and placebo exposure was randomly assigned in a 1:1 ratio by the Investigational Drug Service at Brigham & Women's Hospital. During the 28-day treatment

periods, ranolazine (Gilead Sciences, Foster City, CA, USA) and matching placebo were administered as 500 mg by mouth twice daily for 1 week and increased to 1000 mg by mouth twice daily for 3 weeks, as tolerated. Minimum ranolazine dosing and duration of treatment periods were based on prior data that monotherapy with 500 mg twice daily for 1 week is sufficient to increase exercise tolerance in patients with chronic angina.²³ Treatment compliance was measured by pill count. Patients and study investigators were blinded to treatments and treatment order throughout the study protocol.

Assessment of Myocardial Blood Flow and Coronary Flow Reserve

MBF was measured at rest and in response to supine bicycle exercise using ¹³N-ammonia as a flow tracer. Patients were studied using a whole body PET-CT scanner (Discovery RX or STE LightSpeed 64, GE Healthcare, Milwaukee, WI) after an overnight fast. Patients refrained from beta-blockers, calcium channel blockers, and nitroglycerin for 24 hours prior to their scans. After transmission CT imaging and beginning with the intravenous bolus administration of ¹³N-ammonia (~15 mCi) at rest, list mode images were acquired for 20 minutes. After radioactive decay of the rest radioactive dose, the patient was positioned for supine bicycle exercise on the PET table, just outside the imaging gantry. Symptom-limited supine bicycle exercise stress using a standardized ramp protocol was then performed. At peak stress, exercise was stopped and patients were immediately re-positioned in the PET gantry using skin landmarks, at which point a second dose of ¹³N-ammonia (~15 mCi) was administered followed by list mode imaging for 20 minutes. The time between peak exercise stress and ¹³N-ammonia injection was approximately 20 seconds. A second CT transmission scan was obtained immediately after completion of the stress imaging, and used for attenuation correction of the stress images. The average radiation exposure per complete PET/CT study was approximately 2.8 mSv. Heart rate, blood pressure, and 12-lead electrocardiogram were recorded at baseline and every minute during and after exercise stress. An identical stress protocol and workload was used for stress PET scans after each treatment arm.

Assessment of the global extent and severity of regional perfusion abnormalities was assessed by quantifying the total perfusion deficit at rest, after stress, and their difference using commercially available software (QPS, Cedars Sinai, Los Angeles, CA). Patients with a total

perfusion deficit during stress > 8.8% (corresponding to a summed stress score > 6 and suggestive of clinically significant obstructive CAD) on the baseline study were excluded from further study participation. Rest and post-exercise left ventricular ejection fraction (LVEF) were calculated from gated myocardial perfusion images using commercially available software (Corridor4DM; Ann Arbor, Michigan).

Absolute left ventricular (LV) MBF (in ml/g/min) was computed from the dynamic rest and exercise-stress imaging series using the same commercially available software and previously validated methods.²⁴ Automated regions of interest were used to generate blood pool (arterial input function) and tissue time-activity curves. Regional and global LV rest and exercise MBF were calculated by fitting the ¹³N-ammonia time-activity curves to a two-compartment tracer kinetic model as described previously.^{25,26} Per-patient global coronary flow reserve (CFR) was calculated as the ratio of absolute MBF at stress over rest for the entire left ventricle. Quantitation of MBF was performed by two operators blinded to the patient, treatment and treatment order. The intraclass correlation coefficient for MBF and CFR among these readers was 0.94 (95% CI 0.88-0.98), indicating excellent reproducibility.²⁴ To account for differences in resting cardiac workload, which can affect global rest LV MBF, 'corrected' CFR was calculated: corrected CFR = peak global LV MBF/[(rest MBF/rest rate-pressure product) x 10000].

Assessment of Diastolic and Systolic LV Function

Resting echocardiograms were acquired by an experienced sonographer using a Philip iE33 machine (Philips Corporation, Andover, MA, USA) and included standard 2-dimensional views recommended by the American Society of Echocardiography (ASE).²⁷ Acquired images were digitally stored for quantitative measurements performed by 4 expert echocardiographers blinded to the patient, treatment and treatment order. LV end-diastolic and end-systolic volumes (used to calculate LVEF), left atrial volume, septal and lateral peak early diastolic tissue velocity (e'), septal and lateral peak systolic tissue velocity (s'), and mitral inflow velocity (E) were all measured in accordance with ASE guidelines.^{28,29} Each measurement was performed in triplicate by the same echocardiographer for all study patients. Intraclass correlation coefficients for all echocardiographic measurements, performed on 15 randomly selected study

echocardiograms, are provided in **Table S1**.

Statistical Analysis

We calculated that a sample size of 35 evaluable patients was needed to provide 80% power to detect a 20% relative improvement in immediate post-exercise global LV CFR (primary endpoint) from baseline. Percent improvement from baseline in all other quantitative serum biomarker and echocardiographic measures were secondary endpoints. All patients who received at least one dose of each intervention and had a PET interpretable for CFR at all 3 study visits were included in the efficacy analysis. For the primary endpoint, and all secondary endpoints, individual multilevel mixed-effects linear regression models were used to determine independent treatment effects. In each model, percent change from baseline was used as the outcome variable and fixed effects included treatment phase (i.e., ranolazine or placebo), treatment order (i.e., ranolazine-first or placebo-first), and average daily dose. A per-patient random effect was included to account for any within-patient correlation of repeated measures. All statistical tests were performed with two-sided $\alpha=0.05$ and were performed using Stata software version 13.1 (StataCorp, College Station, Texas, USA).

Study Oversight

The study was investigator-initiated and funded by Gilead Sciences, Inc., the American College of Cardiology and the National Heart, Lung, and Blood Institute at the National Institutes of Health. The authors are solely responsible for the study design and conduct, all statistical analyses, drafting and editing of the manuscript and its final contents. Study characteristics conform to the CONSORT guidelines for reporting randomized clinical trials. An independent Data and Safety Monitoring Board monitored patient safety.

RESULTS

Cohort Characteristics at Baseline

From July 2013 through April 2015, 47 patients who met the inclusion and exclusion criteria were enrolled. There was 1 screen failure (obstructive CAD identified on CCTA) and 6 patients withdrew consent prior to randomization (**Figure 1**). Of the remaining 40 randomized patients, 3 dropped out while receiving ranolazine, 1 dropped out while receiving placebo, and 1

was excluded for PET images that were not interpretable for CFR. Accordingly, 35 patients were included in the primary analysis.

The baseline demographic and clinical characteristics of the study cohort are shown in **Table 1**. The median age was 64 years (interquartile interval [IQI]: 61-67) and 49% were women. The median baseline hemoglobin A1c was 7.4% (IQI: 6.8-8.2). Of the 19 patients (54%) with known CAD, 15 had undergone coronary revascularization (43% of the overall cohort). With respect to baseline antianginal medication use in the study cohort, 20% of patients were on long-acting nitrates, 63% were on beta-blockers, and 26% were on calcium channel-blockers.

Hemodynamic Parameters at Rest and During Exercise

Compared to placebo, ranolazine treatment did not change resting heart rate, systolic blood pressure, mean arterial blood pressure, or rate-pressure product. Likewise, ranolazine treatment did not change immediate post-exercise heart rate, systolic blood pressure, mean arterial blood pressure, or rate-pressure product. Cardiac workload achieved with exercise, assessed by both total METS and peak:rest rate-pressure product, was not significantly different between ranolazine and placebo treatments. A summary of all rest and exercise hemodynamic parameters is provided in **Table S2**. Importantly, our immediate post-exercise hemodynamic measurements represented a drop-off of 10% or less from those at peak exercise, as shown in **Table S3**.

Effect of Ranolazine on Myocardial Blood Flow, Coronary Flow Reserve, Diastolic Function and Serum Biomarkers

In multivariable analysis accounting for treatment phase, treatment order, and average daily dose, ranolazine treatment did not significantly alter rest or immediate post-exercise global LV MBF, CFR or corrected CFR relative to placebo (**Table 2**). However, in exploratory secondary analyses, we found a significant inverse correlation whereby patients with lower baseline corrected CFR were more likely to experience improvement following treatment with ranolazine ($r=-0.401$, $p=0.02$). A similar statistically significant negative correlation was not seen following treatment with placebo ($r=-0.188$, $p=0.28$) (**Figure 2**), though the difference

between the correlation coefficients for ranolazine and placebo did not reach statistical significance (two-tailed $p=0.35$ utilizing the above correlation r values and $n=35$ for each treatment group).

In multivariable analysis accounting for treatment phase, treatment order, and average daily dose, ranolazine was associated with an improvement in E/septal e' ($p=0.001$) and E/lateral e' ($p=0.01$) relative to placebo (**Table 2**). In exploratory secondary analyses, we did not find a significant inverse correlation between baseline E/ e' (septal or lateral) and its improvement following treatment with ranolazine. Relative to placebo, ranolazine treatment did not significantly alter other echocardiographic parameters of resting systolic and diastolic cardiac performance, nor serum hsCRP or serum NT-proBNP (**Table 2**).

Compliance and Safety

The median daily dose of ranolazine was 1750 mg (IQI: 1722-2000) and the median daily dose of placebo was 1750 mg (IQI: 1467-2000). There were no serious adverse events during the ranolazine or washout periods. One serious adverse event occurred during the placebo period [fall complicated by non-fatal intracerebral hemorrhage]. Non-serious adverse events during the ranolazine period occurred in 12 patients [nausea and dizziness (9), hypoglycemia (1), renal abnormality (1), transaminitis (1)]. Amongst the 12 patients with non-serious adverse events during ranolazine treatment, 3 patients dropped out of the study and in the remaining 9 patients dose reduction to 500 mg twice daily resulted in resolution of adverse effects. Non-serious adverse events during the placebo period occurred in 2 patients [hematuria (1), chest pain requiring evaluation (1)]. Finally, non-serious adverse events occurred in 2 patients during follow-up after protocol completion [chest pain requiring evaluation (1), nephrolithiasis (1)]. Complete follow-up at 2 weeks after protocol completion was obtained in 100% of patients.

DISCUSSION

In our cohort of symptomatic patients with diabetes, we found that treatment with ranolazine resulted in a modest but significant improvement in diastolic function, without a change in exercise-stimulated MBF or CFR compared to placebo. In our exploratory secondary analyses, however, we found a significant inverse correlation whereby patients with lower

baseline corrected CFR measurements were more likely to experience improvement following treatment with ranolazine.

Our primary observation that ranolazine does not improve CFR in symptomatic diabetic patients without obstructive CAD is concordant with the findings of Villano et al.³⁰, who found that ranolazine did not have an effect on coronary microvascular function in patients with microvascular angina pectoris. However, our data conflict with those of Tagliamonte et al.¹⁷, who found that ranolazine improved CFR in patients with symptoms of myocardial ischemia in the absence of obstructive CAD. There are several possible explanations for this discrepancy. First, less than 25% of the Tagliamonte cohort had diabetes, in whom hyperglycemia and hyperinsulinemia may trigger distinct pathophysiologic mechanisms to produce microvascular ischemia compared with other disease processes.^{31,32} Second, we induced coronary hyperemia with exercise while Tagliamonte et al. did so with dipyridamole. Coronary hyperemia elicited with vasodilators such as dipyridamole or adenosine uncouples blood flow from cardiac work and reflects predominantly endothelial-independent vasodilation. Exercise, on the other hand, triggers a more complex interplay between metabolic demand, coronary hemodynamics, and vasodilator response. Finally, Tagliamonte et al. measured CFR with echocardiography only in the left anterior descending coronary artery, whereas we measured CFR with PET over the entire LV.

Our finding that ranolazine modestly improves left ventricular filling pressures in symptomatic diabetic patients without obstructive CAD is a novel finding. To date, the only trials examining the effect of ranolazine on echocardiographic measures of diastolic function have been in animal models or patients with heart failure with preserved ejection fraction. The data in those studies are equivocal regarding the improvement of echocardiographic measures of diastolic function with ranolazine.^{33,34}

Our exploratory analyses demonstrating a potential gradient phenomenon governing the effects of ranolazine on myocardial blood flow are consistent with recently published data by Bairey-Merz et al., who also showed that patients with lower baseline CFR had significantly greater improvement in mid-ventricular myocardial perfusion reserve index with ranolazine.³⁵

Prior histopathologic studies in diabetic patients have shown phenotypic heterogeneity with respect to coronary arteriolar thickening, perivascular accumulations of connective tissue, and myocardial stiffening.^{36,37} Patients with these phenotypic features may have more severe impairment of CFR than those with isolated endothelial dysfunction from hyperglycemia, inflammation, and oxidative stress.^{31,38,39} It may be this more severe phenotype that derives more clinical benefit from treatment with ranolazine.

Finally, our protocol coupling supine bicycle exercise stress with dynamic PET imaging to quantify absolute MBF imaging is relatively novel. Krivokapich et al. showed the feasibility of quantifying MBF from dynamic PET images acquired during peak exercise in normal volunteers.⁴⁰ However, the relatively longer gantry length of modern PET-CT scanners (compared to older standalone PET scanners) physically precludes supine exercise during image acquisition. Our exercise stress protocol was designed to minimize the delay between peak exercise and initiation of dynamic PET image acquisition to approximately 20 seconds. Indeed, our baseline absolute immediate post-exercise global MBF measurements (**Table 2**) are very similar to those measured by Krivokapich et al.⁴⁰ Accordingly, we believe this protocol may be attractive to clinical trialists seeking an accurate, precise, and reproducible noninvasive measurement of post-exercise absolute MBF.

While our trial had several strengths, including a crossover trial design, a disease-focused cohort comprised of both men and women, use of an exercise-based stress protocol, and well-validated imaging outcome measures, we acknowledge its limitations as well. The first is our relatively small cohort size of 35 patients, which limited generalizability and our statistical power for detecting differences in our secondary analyses and in any potential cohort subgroups. A second important limitation is that our mechanistic trial was not designed to assess clinical outcomes. Accordingly, it is possible that some of the non-significant improvements we saw with ranolazine compared to placebo (e.g., immediate post-exercise MBF, serum hsCRP, serum NT-proBNP) could contribute to a meaningful reduction in adverse clinical outcomes in a larger population of similar patients. Finally, our experimental design allowed for inclusion of patients with non-obstructive epicardial coronary artery disease and patients with mild stress perfusion defects (summed stress score < 6). While this was done to acknowledge the significant real-

world challenge of identifying symptomatic diabetic patients without any epicardial coronary artery disease (i.e., ‘pure’ microvascular disease), doing so may have created a bias toward our negative CFR results. Specifically, patients in our cohort with impaired CFR more prominently influenced by diffuse ‘non-obstructive’ epicardial atherosclerosis and/or small myocardial scarring may have been less likely to respond to any potential beneficial effects of ranolazine on microvascular function.

In conclusion, in symptomatic diabetic patients without obstructive coronary artery disease, we found that treatment with ranolazine did not change exercise-stimulated myocardial blood flow or coronary flow reserve but did result in a modest but significant improvement in diastolic function. In addition, our exploratory analyses suggest that diabetic patients with more severely impaired coronary flow reserve may derive more benefit from ranolazine than their counterparts with less severe phenotypes.

FUNDING SOURCES: This work was supported by Gilead Sciences, Inc. (investigator-initiated research grant to R.B.), the American College of Cardiology (2015 Presidential Career Development Award to N.R.S.) and the National Heart, Lung, and Blood Institute at the National Institutes of Health (T32 HL094301-01A1 to M.D.C.).

DISCLOSURES: A.M.S. reports non-study-related research support from Gilead Sciences, Inc. The remaining authors have no disclosures to report.

REFERENCES:

1. Ong P, Athanasiadis A, Borgulya G, Mahrholdt H, Kaski JC, Sechtem U. High prevalence of a pathological response to acetylcholine testing in patients with stable angina pectoris and unobstructed coronary arteries. The acova study (abnormal coronary vasomotion in patients with stable angina and unobstructed coronary arteries). *Journal of the American College of Cardiology*. 2012;59:655-662

2. Shaw LJ, Bairey Merz CN, Pepine CJ, Reis SE, Bittner V, Kelsey SF, Olson M, Johnson BD, Mankad S, Sharaf BL, Rogers WJ, Wessel TR, Arant CB, Pohost GM, Lerman A, Quyyumi AA, Sopko G, Investigators W. Insights from the nhlbi-sponsored women's ischemia syndrome evaluation (wise) study: Part i: Gender differences in traditional and novel risk factors, symptom evaluation, and gender-optimized diagnostic strategies. *Journal of the American College of Cardiology*. 2006;47:S4-S20
3. Jespersen L, Hvelplund A, Abildstrom SZ, Pedersen F, Galatius S, Madsen JK, Jorgensen E, Kelbaek H, Prescott E. Stable angina pectoris with no obstructive coronary artery disease is associated with increased risks of major adverse cardiovascular events. *European heart journal*. 2012;33:734-744
4. Jespersen L, Abildstrom SZ, Hvelplund A, Galatius S, Madsen JK, Pedersen F, Hojberg S, Prescott E. Symptoms of angina pectoris increase the probability of disability pension and premature exit from the workforce even in the absence of obstructive coronary artery disease. *European heart journal*. 2013;34:3294-3303
5. Paulus WJ, Tschope C. A novel paradigm for heart failure with preserved ejection fraction: Comorbidities drive myocardial dysfunction and remodeling through coronary microvascular endothelial inflammation. *Journal of the American College of Cardiology*. 2013;62:263-271
6. Murthy VL, Naya M, Foster CR, Gaber M, Hainer J, Klein J, Dorbala S, Blankstein R, Di Carli MF. Association between coronary vascular dysfunction and cardiac mortality in patients with and without diabetes mellitus. *Circulation*. 2012;126:1858-1868
7. Murthy VL, Naya M, Foster CR, Hainer J, Gaber M, Dorbala S, Charytan DM, Blankstein R, Di Carli MF. Coronary vascular dysfunction and prognosis in patients with chronic kidney disease. *JACC. Cardiovascular imaging*. 2012;5:1025-1034
8. Shah NR, Charytan DM, Murthy VL, Skali Lami H, Veeranna V, Cheezum MK, Taqueti VR, Kato T, Foster CR, Hainer J, Gaber M, Klein J, Dorbala S, Blankstein R, Di Carli MF. Prognostic value of coronary flow reserve in patients with dialysis-dependent esrd. *Journal of the American Society of Nephrology : JASN*. 2016;27:1823-9.
9. Di Carli MF, Bianco-Batlles D, Landa ME, Kazmers A, Groehn H, Muzik O, Grunberger G. Effects of autonomic neuropathy on coronary blood flow in patients with diabetes mellitus. *Circulation*. 1999;100:813-819

10. Shaw LJ, Iskandrian AE. Prognostic value of gated myocardial perfusion spect. *Journal of nuclear cardiology : official publication of the American Society of Nuclear Cardiology*. 2004;11:171-185
11. Timmis AD, Chaitman BR, Crager M. Effects of ranolazine on exercise tolerance and hba1c in patients with chronic angina and diabetes. *European heart journal*. 2006;27:42-48
12. Kosiborod M, Arnold SV, Spertus JA, McGuire DK, Li Y, Yue P, Ben-Yehuda O, Katz A, Jones PG, Olmsted A, Belardinelli L, Chaitman BR. Evaluation of ranolazine in patients with type 2 diabetes mellitus and chronic stable angina: Results from the terisa randomized clinical trial (type 2 diabetes evaluation of ranolazine in subjects with chronic stable angina). *Journal of the American College of Cardiology*. 2013;61:2038-2045
13. Song Y, Shryock JC, Wagner S, Maier LS, Belardinelli L. Blocking late sodium current reduces hydrogen peroxide-induced arrhythmogenic activity and contractile dysfunction. *The Journal of pharmacology and experimental therapeutics*. 2006;318:214-222
14. Belardinelli L, Shryock JC, Fraser H. Inhibition of the late sodium current as a potential cardioprotective principle: Effects of the late sodium current inhibitor ranolazine. *Heart*. 2006;92 Suppl 4:iv6-iv14
15. Stone PH, Chaitman BR, Stocke K, Sano J, DeVault A, Koch GG. The anti-ischemic mechanism of action of ranolazine in stable ischemic heart disease. *Journal of the American College of Cardiology*. 2010;56:934-942
16. Mehta PK, Goykhman P, Thomson LE, Shufelt C, Wei J, Yang Y, Gill E, Minissian M, Shaw LJ, Slomka PJ, Slivka M, Berman DS, Bairey Merz CN. Ranolazine improves angina in women with evidence of myocardial ischemia but no obstructive coronary artery disease. *JACC. Cardiovascular imaging*. 2011;4:514-522
17. Tagliamonte E, Rigo F, Cirillo T, Astarita C, Quaranta G, Marinelli U, Caruso A, Romano C, Capuano N. Effects of ranolazine on noninvasive coronary flow reserve in patients with myocardial ischemia but without obstructive coronary artery disease. *Echocardiography*. 2015;32:516-21.
18. Morrow DA, Scirica BM, Karwatowska-Prokopczuk E, Murphy SA, Budaj A, Varshavsky S, Wolff AA, Skene A, McCabe CH, Braunwald E. Effects of ranolazine on recurrent cardiovascular events in patients with non-st-elevation acute coronary syndromes: The merlin-

timi 36 randomized trial. *JAMA : the journal of the American Medical Association*. 2007;297:1775-1783

19. Stone PH, Gratsiansky NA, Blokhin A, Huang IZ, Meng L. Antianginal efficacy of ranolazine when added to treatment with amlodipine: The erica (efficacy of ranolazine in chronic angina) trial. *Journal of the American College of Cardiology*. 2006;48:566-575
20. Mehta PK, Goykhman P, Thomson LE, Shufelt C, Wei J, Yang Y, Gill E, Minissian M, Shaw LJ, Slomka PJ, Slivka M, Berman DS, Bairey Merz CN. Ranolazine improves angina in women with evidence of myocardial ischemia but no obstructive coronary artery disease. *JACC. Cardiovascular imaging*. 2011;4:514-522
21. Spertus JA, Winder JA, Dewhurst TA, Deyo RA, Prodzinski J, McDonell M, Fihn SD. Development and evaluation of the seattle angina questionnaire: A new functional status measure for coronary artery disease. *Journal of the American College of Cardiology*. 1995;25:333-341
22. Rose GA, Blackburn H. Cardiovascular survey methods. *Monograph series. World Health Organization*. 1968;56:1-188
23. Chaitman BR, Skettino SL, Parker JO, Hanley P, Meluzin J, Kuch J, Pepine CJ, Wang W, Nelson JJ, Hebert DA, Wolff AA, Investigators M. Anti-ischemic effects and long-term survival during ranolazine monotherapy in patients with chronic severe angina. *Journal of the American College of Cardiology*. 2004;43:1375-1382
24. Murthy VL, Naya M, Foster CR, Hainer J, Gaber M, Di Carli G, Blankstein R, Dorbala S, Sitek A, Pencina MJ, Di Carli MF. Improved cardiac risk assessment with noninvasive measures of coronary flow reserve. *Circulation*. 2011;124:2215-2224
25. El Fakhri G, Kardan A, Sitek A, Dorbala S, Abi-Hatem N, Lahoud Y, Fischman A, Coughlan M, Yasuda T, Di Carli MF. Reproducibility and accuracy of quantitative myocardial blood flow assessment with ⁸²Rb PET: Comparison with ¹³N-ammonia PET. *Journal of nuclear medicine : official publication, Society of Nuclear Medicine*. 2009;50:1062-1071
26. Di Carli M, Czernin J, Hoh CK, Gerbaudo VH, Brunken RC, Huang SC, Phelps ME, Schelbert HR. Relation among stenosis severity, myocardial blood flow, and flow reserve in patients with coronary artery disease. *Circulation*. 1995;91:1944-1951
27. Picard MH, Adams D, Bierig SM, Dent JM, Douglas PS, Gillam LD, Keller AM, Malenka DJ, Masoudi FA, McCulloch M, Pellikka PA, Peters PJ, Stainback RF, Strachan GM, Zoghbi WA, American Society of E. American society of echocardiography recommendations for quality

- echocardiography laboratory operations. *Journal of the American Society of Echocardiography : official publication of the American Society of Echocardiography*. 2011;24:1-10
28. Lang RM, Bierig M, Devereux RB, Flachskampf FA, Foster E, Pellikka PA, Picard MH, Roman MJ, Seward J, Shanewise JS, Solomon SD, Spencer KT, Sutton MS, Stewart WJ, Chamber Quantification Writing G, American Society of Echocardiography's G, Standards C, European Association of E. Recommendations for chamber quantification: A report from the american society of echocardiography's guidelines and standards committee and the chamber quantification writing group, developed in conjunction with the european association of echocardiography, a branch of the european society of cardiology. *Journal of the American Society of Echocardiography : official publication of the American Society of Echocardiography*. 2005;18:1440-1463
29. Nagueh SF, Appleton CP, Gillebert TC, Marino PN, Oh JK, Smiseth OA, Waggoner AD, Flachskampf FA, Pellikka PA, Evangelista A. Recommendations for the evaluation of left ventricular diastolic function by echocardiography. *Journal of the American Society of Echocardiography : official publication of the American Society of Echocardiography*. 2009;22:107-133
30. Villano A, Di Franco A, Nerla R, Sestito A, Tarzia P, Lamendola P, Di Monaco A, Sarullo FM, Lanza GA, Crea F. Effects of ivabradine and ranolazine in patients with microvascular angina pectoris. *The American journal of cardiology*. 2013;112:8-13
31. Williams SB, Goldfine AB, Timimi FK, Ting HH, Roddy MA, Simonson DC, Creager MA. Acute hyperglycemia attenuates endothelium-dependent vasodilation in humans in vivo. *Circulation*. 1998;97:1695-1701
32. Prior JO, Quinones MJ, Hernandez-Pampaloni M, Facta AD, Schindler TH, Sayre JW, Hsueh WA, Schelbert HR. Coronary circulatory dysfunction in insulin resistance, impaired glucose tolerance, and type 2 diabetes mellitus. *Circulation*. 2005;111:2291-2298
33. Lovelock JD, Monasky MM, Jeong EM, Lardin HA, Liu H, Patel BG, Taglieri DM, Gu L, Kumar P, Pokhrel N, Zeng D, Belardinelli L, Sorescu D, Solaro RJ, Dudley SC, Jr. Ranolazine improves cardiac diastolic dysfunction through modulation of myofilament calcium sensitivity. *Circulation research*. 2012;110:841-850
34. Maier LS, Layug B, Karwatowska-Prokopczuk E, Belardinelli L, Lee S, Sander J, Lang C, Wachter R, Edelmann F, Hasenfuss G, Jacobshagen C. Ranolazine for the treatment of diastolic

- heart failure in patients with preserved ejection fraction: The rali-dhf proof-of-concept study. *JACC. Heart failure*. 2013;1:115-122
35. Bairey Merz CN, Handberg EM, Shufelt CL, Mehta PK, Minissian MB, Wei J, Thomson LE, Berman DS, Shaw LJ, Petersen JW, Brown GH, Anderson RD, Shuster JJ, Cook-Wiens G, Rogatko A, Pepine CJ. A randomized, placebo-controlled trial of late sodium current inhibition (ranolazine) in coronary microvascular dysfunction (cmd): Impact on angina and myocardial perfusion reserve. *European heart journal*. 2016;37:1504-13.
36. Sutherland CG, Fisher BM, Frier BM, Dargie HJ, More IA, Lindop GB. Endomyocardial biopsy pathology in insulin-dependent diabetic patients with abnormal ventricular function. *Histopathology*. 1989;14:593-602
37. Sunni S, Bishop SP, Kent SP, Geer JC. Diabetic cardiomyopathy. A morphological study of intramyocardial arteries. *Archives of pathology & laboratory medicine*. 1986;110:375-381
38. Nishikawa T, Edelstein D, Du XL, Yamagishi S, Matsumura T, Kaneda Y, Yorek MA, Beebe D, Oates PJ, Hammes HP, Giardino I, Brownlee M. Normalizing mitochondrial superoxide production blocks three pathways of hyperglycaemic damage. *Nature*. 2000;404:787-790
39. Cosentino F, Katusic ZS. Tetrahydrobiopterin and dysfunction of endothelial nitric oxide synthase in coronary arteries. *Circulation*. 1995;91:139-144
40. Krivokapich J, Smith GT, Huang SC, Hoffman EJ, Ratib O, Phelps ME, Schelbert HR. ¹³N ammonia myocardial imaging at rest and with exercise in normal volunteers. Quantification of absolute myocardial perfusion with dynamic positron emission tomography. *Circulation*. 1989;80:1328-1337

FIGURE LEGENDS:

Figure 1. Patient enrollment, screening, randomization, and completion flow diagram.

Figure 2. Correlation between baseline corrected CFR and its change after treatment with ranolazine and after treatment with placebo. CFR: coronary flow reserve.

Author Manuscript

Table 1. Study cohort baseline demographic and clinical characteristics.

	All Study Participants (n=35)
Age (years)	64 [61,67]
Female	17 (49%)
Body mass index (kg/m ²)	31 [27,36]
Cardiovascular Risk Factors	
Hypertension	30 (86%)
Dyslipidemia	33 (94%)
Family history of CAD	11 (31%)
Chronic kidney disease	3 (9%)
Current tobacco use	2 (6%)
Cardiovascular History	
Known CAD	19 (54%)
Myocardial infarction	6 (17%)
Coronary revascularization	15 (43%)
- Percutaneous coronary intervention	8 (23%)
- Coronary artery bypass grafting	10 (29%)
Stroke	2 (6%)
Peripheral vascular disease	3 (9%)
Medications	
Insulin	13 (37%)
Aspirin	28 (80%)
Beta-blocker	22 (63%)
Calcium channel blocker	9 (26%)
ACE inhibitor or ARB	27 (77%)
Statin	34 (97%)
Diuretic	15 (43%)
Nitrate	7 (20%)
Symptoms	
Angina and dyspnea on exertion	24 (69%)
Angina only	8 (23%)
Dyspnea on exertion only	3 (9%)
Serum Labs	
Creatinine, mg/dL	0.9 [0.7,1.1]

Continuous variables represented as median [interquartile interval] and dichotomous variables as n (%). Symptoms were assessed by the Seattle Angina Questionnaire and the Rose Dyspnea Scale. ACE, angiotensin-converting enzyme; ARB, angiotensin II receptor blocker; CAD, coronary artery disease.

Author Manuscript

Table 2. Treatment effect of ranolazine on myocardial blood flow, coronary flow reserve, diastolic function, and serum biomarkers.

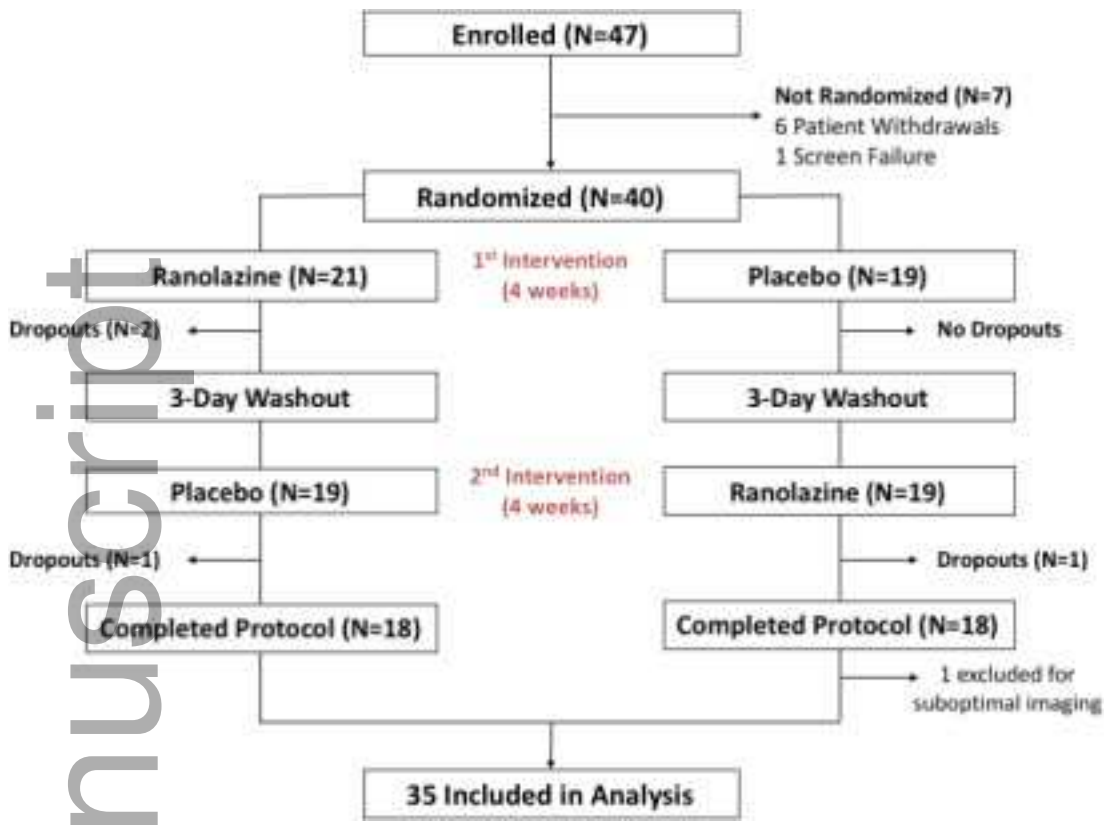
	Baseline Median [IQI]	Ranolazine % Change	Placebo % Change	Treatment Effect*
Myocardial Blood Flow Outcomes				
Rest global MBF, mL/g/min	0.85 [0.68,0.95]	7 [-12,11]	-1 [-15,7]	p=0.23
Immediate post-exercise global MBF, mL/g/min	1.48 [1.23,1.65]	3 [-14,10]	-2 [-15,3]	p=0.19
CFR	1.80 [1.43,2.07]	0 [-10,14]	-2 [-14,16]	p=0.60
Corrected CFR [#]	1.50 [1.35,1.95]	-4 [-14,17]	2 [-17,21]	p=0.84
Rest Echocardiography Outcomes				
Lateral e', m/s (n=28)	0.09 [0.08,0.10]	4 [-8,13]	-1 [-12,10]	p=0.31
Septal e', m/s (n=28)	0.07 [0.06,0.08]	0 [-8,12]	-7 [-18,10]	p=0.05
E/lateral e' (n=28)	8.6 [6.6,10.3]	-3 [-19,14]	4 [-13,28]	p=0.01
E/septal e' (n=26)	10.2 [8.6,11.2]	-4 [-16,12]	8 [0,22]	p=0.001
Left atrial volume, mL (n=26)	26 [22,38]	4 [-6,37]	11 [-19,48]	p=0.21
LVEDV, mL (n=28)	77 [63,99]	1 [-10,7]	-2 [-15,8]	p=0.04
LVESV, mL (n=28)	33 [25,42]	-5 [-11,27]	-2 [-22,27]	p=0.20
LV ejection fraction, % (n=28)	58 [56,63]	1 [-6,4]	-2 [-10,10]	p=0.75
Lateral s', m/s (n=27)	0.08 [0.07,0.09]	0 [-4,14]	-5 [-15,6]	p=0.51
Septal s', m/s (n=28)	0.07	0	-7	p=0.07

		[0.07,0.08]	[-11,7]	[-16,5]	
Serum Biomarker Outcomes					
CFR,	Glucose, %	139	6	11	p=0.57
flow		[103,190]	[-12,40]	[-6,41]	
CRP, C-	Hemoglobin A1c, mg/dL	7.4	-1	-2	p=0.96
protein;		[6.8,8.2]	[-5,4]	[-6,2]	
interval,	High-sensitivity CRP,	2.2	-8	0	p=0.36
	mg/L (n=31)	[1.1,5.9]	[-36,33]	[-28,25]	
end	NT-proBNP, pg/mL	67	-10	4	p=0.31
volume;	(n=34)	[30,113]	[-36,28]	[-24,61]	

coronary reserve; reactive IQI, interquartile LVEDV, left ventricular diastolic LVESF, left ventricular end systolic volume; MBF, myocardial blood flow; NT-proBNP, N-terminal of prohormone brain natriuretic peptide.

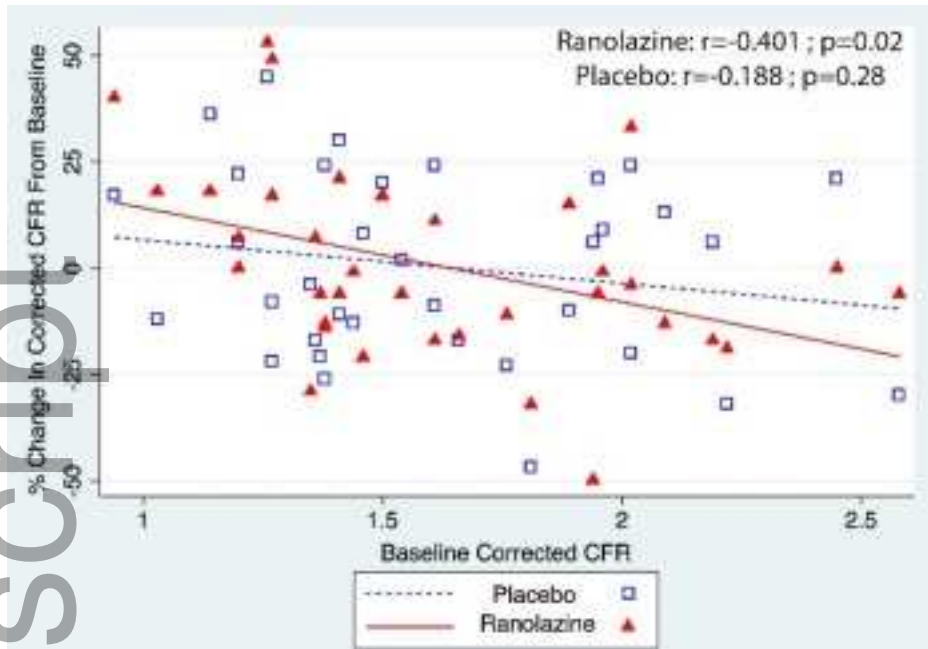
*Treatment effect p value based on mixed linear regression model with % change from baseline as the outcome variable and fixed variables of treatment phase (ranolazine vs. placebo), treatment order, and per-patient average daily ranolazine and placebo dose. A per-patient random effect was also included to account for any within-patient correlation of repeated measures.

#Corrected CFR calculation: $\text{peak global LV MBF} / (\text{rest MBF} / (\text{rest HR} \times \text{rest SBP}) \times 10000)$.



jah3_2151_f1.tiff

Author Manuscript



jah3_2151_f2.tiff