



## RESEARCH LETTER

10.1002/2017GL075443

## Key Points:

- Direct bottom water observations corroborate the annual reconstruction of Southern California OMZ through sedimentary redox proxy records
- Anthropogenic warming intensifies coastal OMZs, reducing oxygen solubility and aggravating stratification
- El Niño–Southern Oscillation (ENSO) plays a role in interannual oxygen variability in extratropical coastal OMZ

## Supporting Information:

- Supporting Information S1
- Data Set S1

## Correspondence to:

I. Hendy,  
ihendy@umich.edu

## Citation:

Wang, Y., Hendy, I., & Napier, T. J. (2017). Climate and anthropogenic controls of coastal deoxygenation on interannual to centennial timescales. *Geophysical Research Letters*, 44, 11,528–11,536. <https://doi.org/10.1002/2017GL075443>

Received 15 MAY 2017

Accepted 31 OCT 2017

Accepted article online 6 NOV 2017

Published online 20 NOV 2017

## Climate and Anthropogenic Controls of Coastal Deoxygenation on Interannual to Centennial Timescales

Yi Wang<sup>1</sup> , Ingrid Hendy<sup>1</sup> , and Tiffany J. Napier<sup>1</sup> <sup>1</sup>Department of Earth and Environmental Sciences, University of Michigan, Ann Arbor, MI, USA

**Abstract** Understanding dissolved oxygen variability in the ocean is limited by the short duration of direct measurements; however, sedimentary oxidation-reduction reactions can provide context for modern observations. Here we use bulk sediment redox-sensitive metal enrichment factors ( $Mo_{EF}$ ,  $Re_{EF}$ , and  $U_{EF}$ ) and scanning X-ray fluorescence records to examine annual-scale sedimentary oxygen concentrations in the Santa Barbara Basin from the Industrial Revolution (Common Era ~1850) to present. Enrichments are linked to measured bottom water oxygen concentrations after 1986. We reveal gradual intensification of the coastal oxygen minimum zone (OMZ) on the southern California margin coinciding with the twentieth century anthropogenic warming trend that leads to reduced oxygen solubility and greater stratification. High-frequency interannual oscillations become more prominent over the last three decades. These are attributed to local “flushing events” triggered by the transition from El Niño to La Niña conditions, which further amplify changes in the extratropical southern Californian OMZ.

**Plain Language Summary** Because we have only been measuring the amount of oxygen in seawater for a few decades, we do not know whether humans have caused oxygen in the ocean to decrease. The chemistry of some metals in sediments records how much oxygen was present in the ocean in the past, as these metals form solids when oxygen is low. We use these metals to determine that the oxygen in the bottom water of the Santa Barbara Channel, California, has decreased since about 1850. This occurs because warmer water reduces the amount of oxygen that can dissolve with in it, while also creating a barrier that reduces contact with the oxygen-rich atmosphere. Over the last 35 years oxygen in the bottom water of the Santa Barbara Channel has briefly increased when El Niño weather conditions shift to La Niña conditions allowing cool, dense water into the depths of the channel.

### 1. Introduction

As a critical component in marine environments, dissolved oxygen (DO) strongly modulates both metabolic and geochemical processes (Keeling et al., 2010). Reduced DO in the water column results in loss of biodiversity and sublethal stresses on surviving organisms (e.g., forced migration and reduction of habitats), especially in coastal marine ecosystems already impacted by preexisting low- $O_2$  stresses (Bopp et al., 2002; Deutsch et al., 2014; Rabalais et al., 2002; Vaquer-Sunyer & Duarte, 2008). In a warming ocean, declining  $O_2$  in OMZs is attributed to lower gas solubility in the surface ocean and increased stratification, which reduces subsurface  $O_2$  supply (Keeling & Garcia, 2002). Primary productivity also plays a role as organic matter remineralization consumes significant  $O_2$  in the ocean interior, and thus, upwelling-induced high primary productivity regions often intersect with coastal OMZs. Human activities contribute to oxygen minimum zone (OMZ) expansion through anthropogenic climate change and eutrophication (Deutsch et al., 2014; Diaz & Rosenberg, 2008). Nutrient-rich river discharge causes eutrophication, further stimulating phytoplankton growth, resulting in greater organic carbon flux and consequent  $O_2$  loss. However, advection of oxygenated water into coastal OMZs replenishes stagnant, low- $O_2$  waters, counteracting eutrophication. Although ocean time series (McClatchie et al., 2010; Whitney et al., 2007) and repeated hydrological surveys (Bograd et al., 2008; Stramma et al., 2008) demonstrate statistically significant declines in water column DO, these measurements are limited by sparse sampling and short time series (<50 years).

Preinstrumental OMZ changes are often reconstructed using sedimentary geochemical proxies, as DO controls redox-sensitive elemental concentrations in sediments during organic matter remineralization (Calvert & Pedersen, 2007; Scholz et al., 2014). Following depletion of oxygen, sulfate eventually becomes the dominant

electron acceptor in remineralization, resulting in accumulation of  $\text{HS}^-$  and facilitating redox-sensitive metal precipitation (Canfield & Thamdrup, 2009). Here we use redox metal enrichment factors ( $\text{metal}_{\text{EF}}$ ) over local lithogenic background to track changes in the reducing environment of sediment pore waters (see section 2). Both Re and U have a negligible lithogenic background and are conservative in oxygenated waters, but are reduced to insoluble precipitates and enriched in sediments under low  $\text{O}_2$  conditions (Crusius et al., 1996; Tribouillard et al., 2006). In contrast, authigenic Mo precipitation proceeds only in the presence of free  $\text{HS}^-$  when  $\text{O}_2$  concentrations are negligible, and thus indicates a strongly reducing environment (Crusius et al., 1996). As Re is preferentially scavenged under less reducing conditions, Re/Mo ratios are used to indicate changing redox conditions at the time of sediment deposition (Crusius et al., 1996). Sedimentary Re/Mo decreases when pore waters shift from slightly to strongly reducing sulfidic environments (free  $\text{HS}^-$  present).

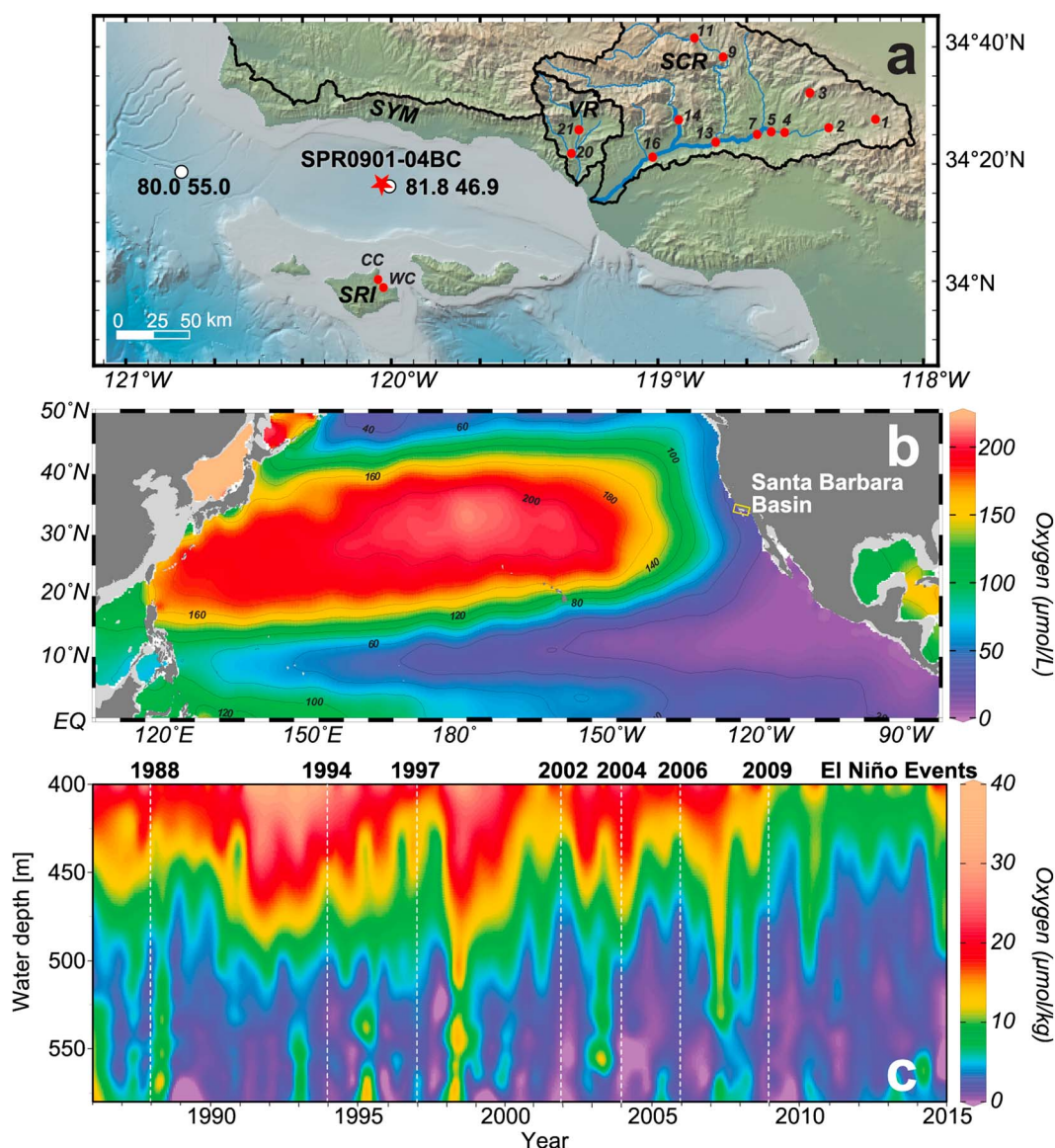
As a nearshore basin in the southern California Bight, the Santa Barbara Basin (SBB) provides an ideal sedimentary archive for high-resolution reconstruction of the preinstrumental OMZ from both climatic and anthropogenic perspectives. Measurements by the California Cooperative Oceanic Fisheries Investigations (CalCOFI) indicate persistent low-oxygen concentrations (typically  $<20 \mu\text{mol kg}^{-1}$ ) in the bottom water of central SBB. This low-oxygen environment is inhospitable for most benthic megafauna and macrofauna (notably burrowing organisms) except the sediment surface-dwelling gastropod *Alia permodesta* (Bernhard et al., 2000; Bernhard et al., 2003; Myhre et al., 2017), preserving the seasonally distinct varved laminations for high-resolution reconstructions (Schimmelmann et al., 1990). With a sill depth of  $\sim 450$  m to the west, bottom water in the basin is either supplied from the California Undercurrent (CUC) (Bograd et al., 2008; Lynn & Simpson, 1990; Nam et al., 2015) or “flushing events”—uplifted cold intermediate water (Auer et al., 2003) that flush SBB when dense subsurface waters displace more buoyant water in the basin (Bograd, 2002). Furthermore, due to its proximity to densely populated southern California, high-resolution sediment records in the SBB also make it possible to investigate abrupt OMZ responses to anthropogenic impacts.

Although extremely low-oxygen concentrations in SBB are in part enhanced by silled bathymetry (Moffitt et al., 2014), SBB still provides a model for nearshore basins in the Southern California Bight (e.g., Santa Monica Basin and San Pedro Basin) and is physically connected to Baja California (eastern tropical northern Pacific) via the CUC (Deutsch et al., 2014; Kienast et al., 2002). Here we reconstruct the long-term and inter-annual OMZ responses to the global change since the Industrial Revolution in SBB sediments to understand processes controlling southern Californian OMZ variability and to improve predictions of OMZ responses to human activities (Figure 1). The core site has also been monitored quarterly by the CalCOFI since 1985. This provides direct measurements of bottom water properties for  $\sim 30$  years and a unique linkage between the sedimentary record and water column observations.

## 2. Materials and Methods

The 67 cm box core SPR0901-04bc ( $34^\circ 16.895' \text{N}$ ,  $120^\circ 02.489' \text{W}$ , 588 m water depth) was recovered from SBB in January 2009 (Figures 1 and S1 in the supporting information). The basin is bounded by narrow sills to the west and east, with depths of 475 m and 230 m, respectively (Figures 1 and S1). SBB sediments are well dated by radiometric methods and sediment fabric observations through  $\sim 40$  years of frequent coring expeditions (Hendy et al., 2015). The sediment age model is based upon well-established varve counts (Schimmelmann et al., 1990) and correlations to previously dated SBB cores using the same distinctive sedimentary fabric, notably varves associated with strong El Niño events in Common Era (C.E.) 1941, 1957, 1983, and 1997; two gray layers at 1761 and 1861–1862; the turbidite layer at 1812; and the *Macoma* bivalve layer at 1841 (Schimmelmann et al., 1992). Ages were then assigned to other samples based on the age model described above (Hendy et al., 2015).

The core was scanned using an X-ray fluorescence (XRF) core scanner (Cox Analytical Instruments) at the Large Lakes Observatory, University of Minnesota, Duluth. The scanner was operated at 200  $\mu\text{m}$  resolution with an 8 s scan time using a Cr X-ray tube with a voltage of 30 kV and a current at 15 mA. The output results were recorded as counts per 8 s and are semiquantitative (Croudace et al., 2006; Hendy et al., 2015). Elemental XRF counts were normalized to Cr coherent scattering to isolate fluorescence intensity change from instrumental factors (for instance, tube aging) that may affect the primary beam intensity (Croudace et al., 2006). Ti, a conservative element that is well resolved by scanning XRF, was employed as a normalizing element for terrigenous input (Croudace et al., 2006) to isolate the authigenic redox signal from siliciclastic input.



**Figure 1.** Study area and oxygen time series. (a) Map of the Santa Barbara Basin (SBB). The red star denotes the core site of SPR0901-04BC, while the two white circles represent the CalCOFI stations (81.8 46.9 (34.27490°N, 120.02524°W) and 80.0 55.0 (34.31667°N, 120.80245°W)). River catchments are outlined in black. Main stems of selected rivers are indicated by thick blue lines: Santa Clara River (SCR), Ventura River (VR), Santa Ynez Mountain (SYM), and Santa Rosa Island (SRI). Lithogenic background sample sites are shown in red circles. Bathymetry is from global multi-resolution topography version 2.6 (Ryan et al., 2009). (b) The color shaded contour map shows the oxygen concentration ( $\mu\text{mol/L}$ ) at 400 m water depth. SBB is denoted with a yellow box. Data are from the World Ocean Atlas 2013 on a  $1^\circ$  longitude  $\times$   $1^\circ$  latitude grid. (c) Intermediate-depth  $\text{O}_2$  concentration time series ( $\mu\text{mol/kg}$ ) from 1985 to 2015 at the center of SBB, indicating highly variable oxygen concentrations. Selected El Niño events are highlighted with white dashed lines. Data are obtained from CalCOFI station 81.8 46.9. Maps and profiles are generated from Ocean Data View (Schlitzer, 2000).

Sulfur counts were normalized to Cl, which is known to be conservative and representative of sea salts, to eliminate the influence of pore water salinity (Ziegler et al., 2008).

For quantitative analyses, core SPR0901-04BC was sampled at continuous 1 cm intervals ( $\sim$ 2–7 years) in spring 2013 to generate bulk samples (Hendy et al., 2015). The samples were freeze-dried and ground to  $<75 \mu\text{m}$ . Each powdered sample (3–5 g) was sent to ALS Laboratories in Vancouver, Canada. The bulk samples were digested using nitric, perchloric, hydrofluoric, and hydrochloric acid cocktail. Quantitative analyses of major, minor, and trace elements were conducted with inductively coupled plasma (ICP)–mass spectrometry and ICP–atomic emission spectroscopy. Standard measurement errors for lab standards GBM908-10 and MRGeo08 are listed in Table S1 in the supporting information.

Enrichment factors for redox-sensitive elements are calculated from measured sample concentrations and the regional lithogenic background value of SBB terrigenous sediment sources using the following equation (Turekian & Wedepohl, 1961):

$$EF_i = \frac{(Element_i / Al)_{sample}}{(Element_i / Al)_{background}} \quad (1)$$

The mean background values of three sediment sources (Santa Clara River, Ventura River, and the Channel Islands) were used to obtain a representative background lithogenic value for SBB sediments (for sample sites see Figures 1 and S1 and Table S3). The weighted average value was calculated using a proportional sediment flux contribution of 0.78, 0.07, and 0.15 for the Santa Clara River, Ventura River, and the Channel Islands, respectively (Warrick & Farnsworth, 2009).

To relate sedimentary redox proxies to bottom water observations, we used quarterly sampled bottom water nutrients and physical property data by CalCOFI from 1986 to 2015 at Station 81.8 46.9 (center of the basin, 34°16'29.64"N, 120°1'30"W at 557–578 m water depth) and station 80.0 55.0 (western sill depth, 34°19'N, 120°48'10.8"W at 500 m water depth) (Figures 1 and S1). Dissolved oxygen was determined using Winkler titrations (Carpenter, 1965), but this method was replaced by autotitration measuring UV absorption of tri-iodide ion in 2003. Nutrients were measured with a colorimetric method on automated analyzers (Gordon et al., 1993). Detailed methods and data processing protocols can be found at [www.calcofi.org](http://www.calcofi.org).

El Niño–Southern Oscillation (ENSO) phases are quantified by sea surface temperature (SST) anomalies obtained from the Niño 3.4 Index (from NOAA, monthly SST from 5°N to 5°S and 170° to 120°W) after removing the mean value from 1951 to 2000. The CalCOFI bottom water temperature record sampled at 3 month intervals was interpolated to generate the same temporal resolution for correlation with monthly Niño 3.4 anomalies between 1986 and 2015 ( $n = 349$ ). Cross correlation shows maximum correlation coefficient with 2–3 month lag at 95% confidence level (see supporting information, Figure S3). Here we use a response time of 3 months in relating ENSO perturbation to OMZ oscillations to account for the longer lag experienced by subsurface upwelling sourced water as opposed to pycnocline depth anomalies (Jacox et al., 2015).

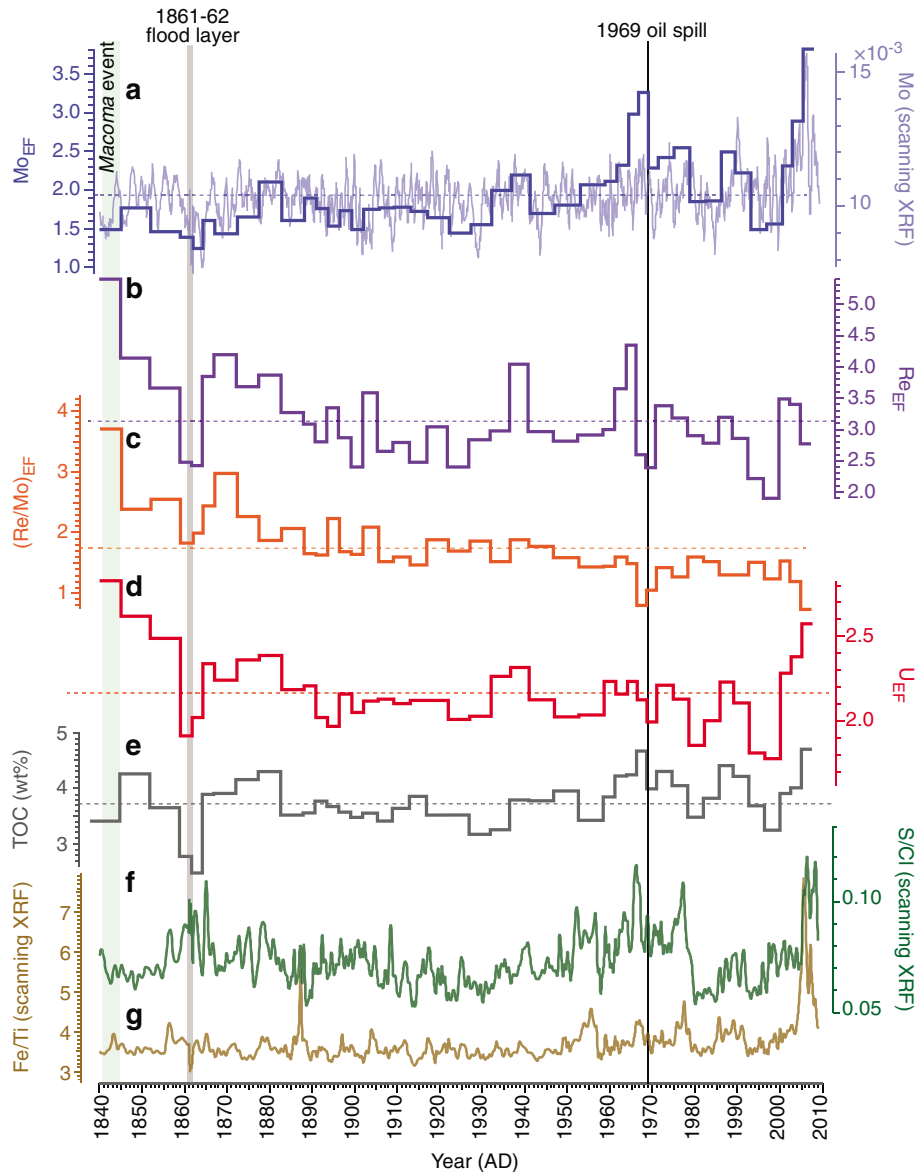
### 3. Sedimentary Oxygen Reconstruction Since the Industrial Revolution

Core SPR0901-04BC is a mostly laminated sequence except for the two identified gray layers (1761–1762 and 1861 flood) and one olive layer associated with the 1812 Santa Barbara earthquake (Hendy et al., 2015). It exhibits both long-term (centennial) evolution of reducing pore water conditions associated with regional warming trends (Barron et al., 2013; Field et al., 2006) and abrupt pore water responses to anthropogenic perturbations. Additionally, a high sedimentation rate (~2–3 mm/yr) and seasonally distinct laminations allow for identification of interannual climate variability superimposed on the long-time (~150 year) OMZ evolution.

Before C.E. 1811, sedimentary laminations in the core demonstrate insufficient pore water O<sub>2</sub> for macrofauna. At ~1840 *Macoma* bivalve shells were found preserved in situ (Schimmelmann et al., 1992). These bivalves are intolerant of hypoxia (<65 μmol/kg) (Coan, 2000; Myhre et al., 2017), indicating a relatively well-oxygenated benthic environment existed for <3 years. Less reducing sedimentary conditions at this time may have been attributed to the abrupt deposition of a seismically triggered turbidite in 1812 (Borrero et al., 2001). A pulse of metal oxides introduced into the deep basin, especially reactive Fe hydroxides, could have provided oxidants for free sulfides in bottom water. However, this interval also coincides with locally depressed sea surface temperatures (SSTs) associated with the end of the Little Ice Age (Briffa et al., 1998; Pak et al., 2016). Higher gas solubility and reduced water column stratification during early nineteenth century cooling may have led to redistribution of vertical zonation of ecosystems to allow benthic oxygenated ecosystems as O<sub>2</sub> increased on the margin (Moffitt et al., 2015). Our results cannot distinguish between these two possible scenarios, which additionally do not preclude each other. Suffocation of *Macoma* in ~1845 is supported by declining Re/Mo values and concomitant increasing Mo<sub>EF</sub> (Figures 2a and 2c), suggesting a return to low-oxygen conditions (Schimmelmann et al., 1992).

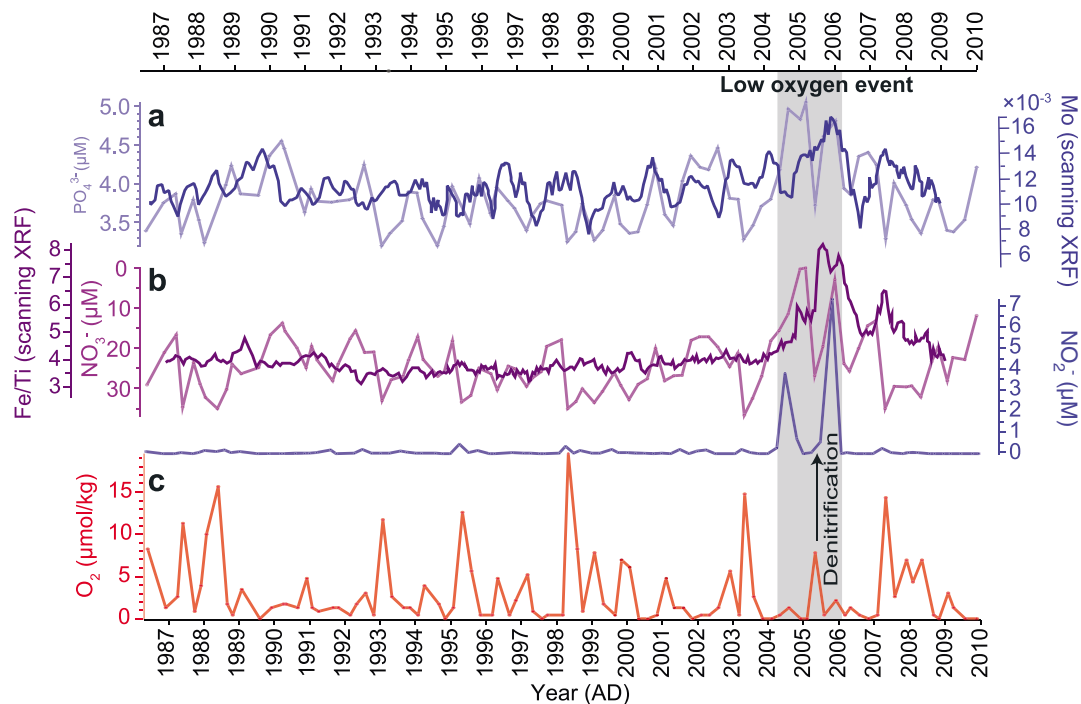
The 1861–1862 flood (~0.7 cm gray layer) (Hendy et al., 2015) brought a pulse of oxygenated sediments into the basin that partly obscure the long-term trend toward more reducing pore water conditions (Figure 2). However, from 1870 to ~1950 the average Mo<sub>EF</sub> increased from  $1.46 \pm 0.12$  (95% confidence level, prior to





**Figure 2.** Enrichment factors (EFs) of redox proxies and average values for the last 170 years: (a)  $Mo_{EF}$  (thick blue line), the average value of  $Mo_{EF}$  (blue dashed line), and 20-pt moving average of scanning XRF Mo normalized to Cr coherent scattering (thin blue line); (b)  $Re_{EF}$  (thick purple line) and average value (purple dashed line); (c)  $Re_{EF}/Mo_{EF}$  ratio (thick orange line) and average value (orange dashed line); (d)  $U_{EF}$  (thick red line) and average value (red dashed line); (e) TOC (wt %, thick gray line) and mean value (gray dashed line) (Hendy et al., 2015); and (f and g) the 20-pt moving average of scanning XRF Fe/Ti (brown line) and S/Cl (green line); the *Macoma* bivalve layer (green shading), 1861–62 flood layer (gray bar), and 1969 oil spill event (black line) are indicated.

1870) to  $1.73 \pm 0.08$  with a concurrent Re/Mo decline from  $2.55 \pm 0.47$  to  $1.77 \pm 0.09$ , as  $Re_{EF}$  decreased from  $3.73 \pm 0.76$  to  $3.04 \pm 0.18$  and  $U_{EF}$  from  $2.35 \pm 0.24$  to  $2.13 \pm 0.05$  (Figures 2a–2d). This redox shift was decoupled from the sedimentary total organic carbon (TOC) concentrations, which remained mostly below average ( $\sim 3.74$  wt %) during this interval (Figure 2e). Thus, factors other than  $O_2$  consumption by organic matter remineralization must have played a role in changing pore water redox chemistry. This long-term shift coincided with a rise in regional SSTs, as indicated by dinoflagellate cyst, foraminifera, coccolithophore, diatom, and silicoflagellate census data (Barron et al., 2013; Bringué et al., 2014; De Bernardi et al., 2008; Field et al., 2006; Grelaud et al., 2009). Dinoflagellate taxa from SBB sediments suggest both warming SSTs and relaxation of upwelling conditions as early as the 1900s (Bringué et al., 2014). Diatoms also indicate twentieth century warming, as assemblages shift toward larger diatom species around the 1940s (Barron et al., 2013). Anthropogenic twentieth century warming could have led to a



**Figure 3.** Bottom water properties of Santa Barbara Basin (SBB) and redox proxies. (a) bottom water phosphate ( $\mu\text{mol/L}$ , thick light blue line) and the 5-pt moving average of normalized scanning XRF Mo (thin blue line) normalized to Cr coherent scattering; (b) nitrate ( $\mu\text{mol/L}$ , light purple line), 5-point moving average of Fe/Ti (dark purple line), and nitrite ( $\mu\text{mol/L}$ , light blue line); and (c) dissolved oxygen of bottom water ( $\mu\text{mol/kg}$ , red line). Water chemistry and temperature data are obtained from California Cooperative Oceanic Fisheries Investigations (CalCOFI). The low-oxygen event is indicated by gray shading.

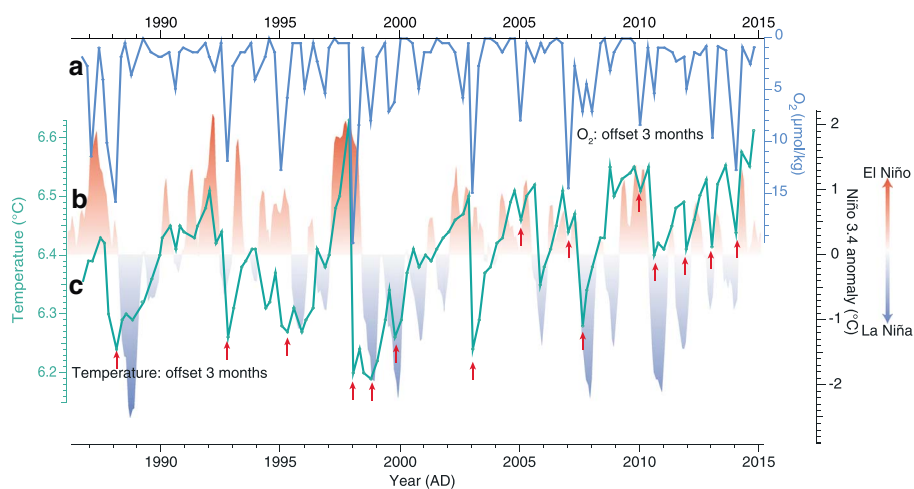
deeper thermocline and more intense stratification, reducing the  $\text{O}_2$  supply to subsurface waters and providing a mechanism for the long-term shift toward more reducing conditions in the basin (Di Lorenzo et al., 2005; Keeling & Garcia, 2002).

The sedimentary record also reveals the role of anthropogenic impacts on rapidly altering pore water redox chemistry, as indicated by sharp spikes in  $\text{Mo}_{\text{EF}}$  and a dramatic Re/Mo decline after 1950 and notably at 1969 (Figure 2). These abrupt changes are clearly identified in the high-resolution Fe/Ti and S/Cl scanning XRF records. The sudden increase of sedimentary  $\text{O}_2$  demand in 1969 may be associated with a well blowout in the Santa Barbara Channel that released  $\sim 15,900,000$  L of crude oil following  $\sim 40$  years of metal enriched drill oil discharge into SBB (Foster et al., 1971). A demand for pore water  $\text{O}_2$  during the degradation of spilled hydrocarbon in this interval could have produced a dramatic shift toward more reducing pore water conditions. Similar sedimentary responses toward more reducing environments have also been observed in the Gulf of Mexico within the following 2 years after the *Deepwater Horizon* blowout in 2010 (Hastings et al., 2016), further addressing the role of anthropogenic perturbations on interannual oxygenation shifts in coastal areas.

After the 1970s, S/Cl and Fe/Ti records, in addition to redox sensitive metals, exhibit coincident oscillations (Figure 2). Redox-sensitive metal EFs, Mo in particular, become more coherent with sedimentary TOC content (correlation coefficient of 0.83,  $n = 12$ , after 1969 compared to 0.66,  $n = 25$ , between 1870 and 1969), suggesting organic matter remineralization controlled pore water redox changes that lead to rapid scavenging of redox elements near the sediment-water interface (Algeo & Lyons, 2006).

#### 4. Water Column Observations and the Sedimentary Redox Record

Comparison of independent, quarterly sampled CalCOFI water chemistry time series to subannually sampled sedimentary scanning XRF records of redox-sensitive metals demonstrates annual-scale coherence from 1986 to 2010 (corresponding to  $\sim 7$  cm depth in the sediment record). Nitrite spikes recorded ( $\sim 4$  and  $7 \mu\text{mol/kg}$  nitrite) in the summers of 2004 and 2005 were produced by denitrification in the local water column supported by concurrent decline of bottom water nitrate concentrations in the basin (Figure 3c).



**Figure 4.** Relationship between bottom water temperature, oxygen concentration and ENSO variability. (a) dissolved oxygen of bottom water (blue line,  $\mu\text{mol}/\text{kg}$ ) at station 81.8 46.9 (water depths between 557 and 578 m used; data offset of 3 months applied); (b) bottom water temperature at the same station denoted as the green line ( $^{\circ}\text{C}$ , data offset of 3 months applied); and (c) red (El Niño) and blue (La Niña) shading represent Niño 3.4 anomalies as indicators of ENSO variability. The red arrows indicate flushing events that correspond to abrupt water temperature decreases.

Denitrification may have aggravated nitrogen loss in the water column and sharply altered the redox potential to facilitate redox metal precipitation. Coincident peaks in the subannually resolved scanning XRF Mo and Fe/Ti counts (Figures 3a and 3b) confirm redox mineral preservation near the sediment-water interface that can be linked to highly active biogeochemical nutrient cycling in the water column. Thus, sedimentary redox proxies are closely associated with water column oxygenation conditions, highlighting the validity of applying downcore records to reconstruct water column chemistry. Furthermore, scanning XRF records have the potential to capture annually resolved redox changes.

### 5. Interannual Dissolved Oxygen Concentrations and ENSO Variability

Observed high-frequency variability in redox metal concentrations suggests that other mechanisms beyond the centennial temperature-driven  $\text{O}_2$  saturation may be important to DO concentrations. Both SBB sediment geochemistry and direct water column measurements display  $\text{O}_2$  variability on an annual scale (Figures 3 and 4) that can be attributed to interannual climate variability. Figure 4 demonstrates a tight linkage between ENSO variability and bottom water oxygen replenishment since 1986, notably through aforementioned flushing events that control interannual bottom water  $\text{O}_2$  concentrations and consequently impact the redox potential of sediment pore waters. When a 3 month lag is applied to the bottom water temperature and DO measurements relative to the Niño 3.4 temperature anomaly record, a significant correspondence (cross correlation  $r = 0.33$ , 95% confidence level, see the supporting information) is produced (Figure 4). Rapid bottom water temperature decreases typically correspond to DO increases, suggesting external input of dense, cold, and oxygenated water by flushing events. During El Niño years, bottom waters are typically anomalously warm (with an  $\sim 3$  month response time). The concurrently depressed thermocline, weakened upwelling with shallower source water depth (Jacox et al., 2015), and the stronger CUC (Lynn & Bograd, 2002) contribute to a stagnant water column in SBB (lower frequency of flushing events; Figure 4). With the transition from El Niño to La Niña conditions, invigorated upwelling flushes colder and more oxygenated intermediate water into the basin. Although flushing events are able to replenish water column  $\text{O}_2$  instantaneously, SBB is only temporarily ventilated because subsequent remineralization of sinking organic matter quickly consumes the newly replenished  $\text{O}_2$  in the bottom water (Figure 4). Therefore, ENSO variability currently plays a role in rapidly switching the basin between the two oxygenation states (ventilated or stagnant) within several months. This highly oscillatory bottom water chemistry has contributed to the significant variability in pore water redox conditions over the past several decades. These results suggest that short-duration OMZ shifts can be predicted using ENSO indices providing several months of lead-time to assess potential ecological and environmental impacts on local ecosystems.

## 6. Conclusions

This high-resolution sediment archive extends dissolved oxygen (DO) instrumental measurements back in time and provides a unique insight into long-term evolution of the southern Californian coastal oxygen minimum zone (OMZ) since the Industrial Revolution (~1850). Enrichment of redox-sensitive metals in Santa Barbara Basin (SBB) sediments demonstrates aggravated reducing pore water environments that may result from the OMZ intensification through time. This centennial deoxygenation is attributed to the warming of the North Pacific Ocean as primary productivity is shown to decouple from observed OMZ evolution. The 1969 oil spill in SBB is also recorded as a regional anthropogenic driven OMZ perturbation. Furthermore, interannual DO variability within the long-term deoxygenation trend is observed in both bottom water observations and the subannual scanning XRF elemental composition of sediments. Flushing event frequency of SBB bottom waters is associated with interannual climate (ENSO) variability, which switches the basin between a stagnant and ventilated water column, further amplifying the OMZ variability.

### Acknowledgments

This work is supported by the National Science Foundation under grant OCE-1304327 awarded to I.H.; Y.W. and T.J.N. acknowledge support from the Rackham Graduate School of the University of Michigan. We would like to thank crews and scientists in CalCOFI for collecting high-quality data for decades and making it accessible to the public. CalCOFI data were freely obtained from <http://calcofi.org/data.html>. Other data are included as tables in the supporting information.

### References

- Algeo, T. J., & Lyons, T. W. (2006). Mo-total organic carbon covariation in modern anoxic marine environments: Implications for analysis of paleoredox and paleohydrographic conditions. *Paleoceanography*, 21, PA1016. <https://doi.org/10.1029/2004PA001112>
- Auad, G., Kennett, J. P., & Miller, A. J. (2003). North Pacific Intermediate Water response to a modern climate warming shift. *Journal of Geophysical Research*, 108, 3349. <https://doi.org/10.1029/2003JC001987>
- Barron, J. A., Bukry, D., Field, D. B., & Finney, B. (2013). Response of diatoms and silicoflagellates to climate change and warming in the California Current during the past 250 years and the recent rise of the toxic diatom *Pseudo-nitzschia australis*. *Quaternary International*, 310, 140–154. <https://doi.org/10.1016/j.quaint.2012.07.002>
- Bernhard, J. M., Buck, K. R., Farmer, M. A., & Bowser, S. S. (2000). The Santa Barbara Basin is a symbiosis oasis. *Nature*, 403(6765), 77–80. <https://doi.org/10.1038/47476>
- Bernhard, J. M., Visscher, P. T., & Bowser, S. S. (2003). Submillimeter life positions of bacteria, protists, and metazoans in laminated sediments of the Santa Barbara Basin. *Limnology and Oceanography*, 48(2), 813–828. <https://doi.org/10.4319/lo.2003.48.2.0813>
- Bograd, S. J. (2002). Bottom water renewal in the Santa Barbara Basin. *Journal of Geophysical Research*, 107, 3216. <https://doi.org/10.1029/2001JC001291>
- Bograd, S. J., Castro, C. G., Di Lorenzo, E., Palacios, D. M., Bailey, H., Gilly, W., & Chavez, F. P. (2008). Oxygen declines and the shoaling of the hypoxic boundary in the California Current. *Geophysical Research Letters*, 35, L12607. <https://doi.org/10.1029/2008GL034185>
- Bopp, L., Le Quéré, C., Heimann, M., Manning, A. C., & Monfray, P. (2002). Climate-induced oceanic oxygen fluxes: Implications for the contemporary carbon budget. *Global Biogeochemical Cycles*, 16(2), 1–13. <https://doi.org/10.1029/2001GB001445>
- Borrero, J. C., Dolan, J. F., & Synolakis, C. E. (2001). Tsunamis within the Eastern Santa Barbara Channel. *Geophysical Research Letters*, 28(4), 643–646. <https://doi.org/10.1029/2000GL011980>
- Briffa, K. R., Jones, P. D., Schweingruber, F. H., & Osborn, T. J. (1998). Influence of volcanic eruptions on Northern Hemisphere summer temperature over the past 600 years. *Nature*, 393(6684), 450–455. <https://doi.org/10.1038/30943>
- Bringué, M., Pospelova, V., & Field, D. B. (2014). High resolution sedimentary record of dinoflagellate cysts reflects decadal variability and 20th century warming in the Santa Barbara Basin. *Quaternary Science Reviews*, 105, 86–101. <https://doi.org/10.1016/j.quascirev.2014.09.022>
- Calvert, S. E., & Pedersen, T. F. (2007). Elemental proxies for palaeoclimatic and palaeoceanographic variability in marine sediments: Interpretation and application. In *Developments in Marine Geology* (pp. 567–644). Elsevier Science.
- Canfield, D. E., & Thamdrup, B. (2009). Towards a consistent classification scheme for geochemical environments, or, why we wish the term 'suboxic' would go away. *Geobiology*, 7(4), 385–392. <https://doi.org/10.1111/j.1472-4669.2009.00214.x>
- Carpenter, J. H. (1965). The Chesapeake Bay Institute Technique for the Winkler dissolved oxygen method. *Limnology and Oceanography*, 10(1), 141–143. <https://doi.org/10.4319/lo.1965.10.1.0141>
- Coan, E. V. (2000). The eastern Pacific Recent species of the bivalve genus *Gari* (Tellinoidea: Psammobiidae), with notes on western Atlantic and fossil taxa. *Malacologia*, 42(1–2), 1–29.
- Croudace, I. W., Rindby, A., & Rothwell, R. G. (2006). ITRAX: Description and evaluation of a new multi-function X-ray core scanner. *Geological Society, London, Special Publications*, 267(1), 51–63. <https://doi.org/10.1144/GSL.SP.2006.267.01.04>
- Crusius, J., Calvert, S., Pedersen, T., & Sage, D. (1996). Rhenium and molybdenum enrichments in sediments as indicators of oxic, suboxic and sulfidic conditions of deposition. *Earth and Planetary Science Letters*, 145(1–4), 65–78. [https://doi.org/10.1016/S0012-821X\(96\)00204-X](https://doi.org/10.1016/S0012-821X(96)00204-X)
- De Bernardi, B., Ziveri, P., Erba, E., & Thunell, R. C. (2008). Calcareous phytoplankton response to the half century of interannual climatic variability in Santa Barbara Basin (California). *Paleoceanography*, 23, PA2215. <https://doi.org/10.1029/2007PA001503>
- Deutsch, C., Berelson, W., Thunell, R., Weber, T., Tems, C., McManus, J., ... van Geen, A. (2014). Centennial changes in North Pacific anoxia linked to tropical trade winds. *Science*, 345(6197), 665–668. <https://doi.org/10.1126/science.1252332>
- Di Lorenzo, E., Miller, A. J., Schneider, N., & McWilliams, J. C. (2005). The warming of the California Current System—Dynamics and ecosystem implications. *Journal of Physical Oceanography*, 35(3), 336–362. <https://doi.org/10.1175/JPO-2690.1>
- Diaz, R. J., & Rosenberg, R. (2008). Spreading dead zones and consequences for marine ecosystems. *Science*, 321(5891), 926–929. <https://doi.org/10.1126/science.1156401>
- Field, D., Baumgartner, T. R., Charles, C. D., Ferrelra-Bartrina, V., & Ohman, M. D. (2006). Planktonic foraminifera of the California Current reflect 20th-century warming. *Science*, 311(5757), 63–66. <https://doi.org/10.1126/science.1116220>
- Foster, M., Charters, A. C., & Neushul, M. (1971). The Santa Barbara oil spill. Part 1: Initial quantities and distribution of pollutant crude oil. *Environmental Pollution*, 2(2), 97–113. [https://doi.org/10.1016/0013-9327\(71\)90014-0](https://doi.org/10.1016/0013-9327(71)90014-0)
- Gordon, L. I., Jennings, J. C. J., Ross, A. A., & Krest, J. M. (1993). A suggested protocol for continuous flow automated analysis of seawater nutrients in the WOCE hydrographic program and the joint global ocean fluxes Study Rep., WOCE Hydrographic Program Office.



- Grelaud, M., Schimmelmann, A., & Beaufort, L. (2009). Coccolithophore response to climate and surface hydrography in the Santa Barbara Basin, California, AD 1917–2004. *Biogeosciences*, 6(10), 2025–2039. <https://doi.org/10.5194/bg-6-2025-2009>
- Hastings, D. W., Schwing, P. T., Brooks, G. R., Larson, R. A., Morford, J. L., Roeder, T., ... Hollander, D. J. (2016). Changes in sediment redox conditions following the BP DWH blowout event. *Deep Sea Research Part II: Topical Studies in Oceanography*, 129, 167–178. <https://doi.org/10.1016/j.dsr2.2014.12.009>
- Hendy, I. L., Napier, T. J., & Schimmelmann, A. (2015). From extreme rainfall to drought: 250 years of annually resolved sediment deposition in Santa Barbara Basin, California. *Quaternary International*, 387, 3–12. <https://doi.org/10.1016/j.quaint.2015.01.026>
- Jacox, M. G., Fiechter, J., Moore, A. M., & Edwards, C. A. (2015). ENSO and the California Current coastal upwelling response. *Journal of Geophysical Research: Oceans*, 120, 1691–1702. <https://doi.org/10.1002/2014JC010650>
- Keeling, R. E., & Garcia, H. E. (2002). The change in oceanic O<sub>2</sub> inventory associated with recent global warming. *Proceedings of the National Academy of Sciences of the United States of America*, 99(12), 7848–7853. <https://doi.org/10.1073/pnas.122154899>
- Keeling, R. E., Kortzinger, A., & Gruber, N. (2010). Ocean deoxygenation in a warming world. *Annual Review of Marine Science*, 2(1), 199–229. <https://doi.org/10.1146/annurev.marine.010908.163855>
- Kienast, S. S., Calvert, S. E., & Pedersen, T. F. (2002). Nitrogen isotope and productivity variations along the northeast Pacific margin over the last 120 kyr: Surface and subsurface paleoceanography. *Paleoceanography*, 17(4), 1055. <https://doi.org/10.1029/2001PA000650>
- Lynn, R. J., & Bograd, S. J. (2002). Dynamic evolution of the 1997–1999 El Niño–La Niña cycle in the southern California Current System. *Progress in Oceanography*, 54(1–4), 59–75. [https://doi.org/10.1016/S0079-6611\(02\)00043-5](https://doi.org/10.1016/S0079-6611(02)00043-5)
- Lynn, R. J., & Simpson, J. J. (1990). The flow of the undercurrent over the continental borderland off southern California. *Journal of Geophysical Research*, 95(C8), 12,995–13,008. <https://doi.org/10.1029/JC095iC08p12995>
- McClatchie, S., Goericke, R., Cosgrove, R., Auad, G., & Vetter, R. (2010). Oxygen in the Southern California Bight—Multidecadal trends and implications for demersal fisheries. *Geophysical Research Letters*, 37, L19602. <https://doi.org/10.1029/2010GL044497>
- Moffitt, S. E., Hill, T. M., Ohkushi, K., Kennett, J. P., & Behl, R. J. (2014). Vertical oxygen minimum zone oscillations since 20 ka in Santa Barbara Basin: A benthic foraminiferal community perspective. *Paleoceanography*, 29, 44–57. <https://doi.org/10.1002/2013PA002483>
- Moffitt, S. E., Hill, T. M., Roopnarine, P. D., & Kennett, J. P. (2015). Response of seafloor ecosystems to abrupt global climate change. *Proceedings of the National Academy of Sciences of the United States of America*, 112(15), 4684–4689. <https://doi.org/10.1073/pnas.1417130112>
- Myhre, S. E., Kroeker, K. J., Hill, T. M., Roopnarine, P., & Kennett, J. P. (2017). Community benthic paleoecology from high-resolution climate records: Mollusca and foraminifera in post-glacial environments of the California margin. *Quaternary Science Reviews*, 155, 179–197. <https://doi.org/10.1016/j.quascirev.2016.11.009>
- Nam, S., Takeshita, Y., Frieder, C. A., Martz, T., & Ballard, J. (2015). Seasonal advection of Pacific equatorial water alters oxygen and pH in the Southern California Bight. *Journal of Geophysical Research: Oceans*, 120, 5387–5399. <https://doi.org/10.1002/2015JC010859>
- Pak, D. K., Hendy, I. L., Weaver, J. C., Schimmelmann, A., & Clayman, L. (2016). Foraminiferal proxy response to ocean temperature variability and acidification over the last 150 years in the Santa Barbara Basin (California). *Quaternary International*. <https://doi.org/10.1016/j.quaint.2016.07.049>
- Rabalais, N. N., Turner, R. E., & Wiseman, W. J. (2002). Gulf of Mexico hypoxia, A.K.A. “The dead zone”. *Annual Review of Ecology and Systematics*, 33(1), 235–263. <https://doi.org/10.1146/annurev.ecolsys.33.010802.150513>
- Ryan, W. B. F., Carbotte, S. M., Coplan, J. O., O’Hara, S., Melkonian, A., Arko, R., ... Zemsky, R. (2009). Global multi-resolution topography synthesis. *Geochemistry, Geophysics, Geosystems*, 10, Q03014. <https://doi.org/10.1029/2008GC002332>
- Schimmelmann, A., Lange, C., Berger, W. H., Simon, A., Burke, S. K., & Dunber, R. B. (1992). Extreme climatic conditions recorded in Santa Barbara Basin laminated sediments: The 1835–1840 Macoma event. *Marine Geology*, 106(3–4), 279–299. [https://doi.org/10.1016/0025-3227\(92\)90134-4](https://doi.org/10.1016/0025-3227(92)90134-4)
- Schimmelmann, A., Lange, C. B., & Berger, W. H. (1990). Climatically controlled marker layers in Santa Barbara Basin sediments and fine-scale core-to-core correlation. *Limnology and Oceanography*, 35(1), 165–173.
- Schlitzer, R. (2000). Electronic atlas of WOCE hydrographic and tracer data now available. *Eos, Transactions American Geophysical Union*, 81(5), 45–45. <https://doi.org/10.1029/00EO00028>
- Scholz, F., McManus, J., Mix, A. C., Hensen, C., & Schneider, R. R. (2014). The impact of ocean deoxygenation on iron release from continental margin sediments. *Nature Geoscience*, 7(6), 433–437. <https://doi.org/10.1038/ngeo2162>
- Stramma, L., Johnson, G. C., Sprintall, G. C., & Mohrholz, V. (2008). Expanding oxygen-minimum zones in the tropical oceans. *Science*, 320(5876), 655–658. <https://doi.org/10.1126/science.1153847>
- Tribouillard, N., Algeo, T. J., Lyons, T., & Riboulleau, A. (2006). Trace metals as paleoredox and paleoproductivity proxies: An update. *Chemical Geology*, 232(1–2), 12–32. <https://doi.org/10.1016/j.chemgeo.2006.02.012>
- Turekian, K., & Wedepohl, K. H. (1961). Distribution of the elements in some major units of the Earth’s crust. *Geological Society of America Bulletin*, 72(2), 175–192. [https://doi.org/10.1130/0016-7606\(1961\)72%5B175:DOTEIS%5D2.0.CO;2](https://doi.org/10.1130/0016-7606(1961)72%5B175:DOTEIS%5D2.0.CO;2)
- Vaquero-Sunyer, R., & Duarte, C. M. (2008). Thresholds of hypoxia for marine biodiversity. *Proceedings of the National Academy of Sciences of the United States of America*, 105(40), 15,452–15,457. <https://doi.org/10.1073/pnas.0803833105>
- Warrick, J. A., & Farnsworth, K. L. (2009). Sources of sediment to the coastal waters of the Southern California Bight. *The Geological Society of America Special Paper*, 454, 39–52. [https://doi.org/10.1130/2009.2454\(2.2\)](https://doi.org/10.1130/2009.2454(2.2))
- Whitney, F. A., Freeland, H. J., & Robert, M. (2007). Persistently declining oxygen levels in the interior waters of the eastern subarctic Pacific. *Progress in Oceanography*, 75(2), 179–199. <https://doi.org/10.1016/j.pcean.2007.08.007>
- Ziegler, M., Jilbert, T., de Lange, G. J., Lourens, L. J., & Reichert, G.-J. (2008). Bromine counts from XRF scanning as an estimate of the marine organic carbon content of sediment cores. *Geochemistry, Geophysics, Geosystems*, 9, Q05009. <https://doi.org/10.1029/2007GC001932>