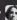
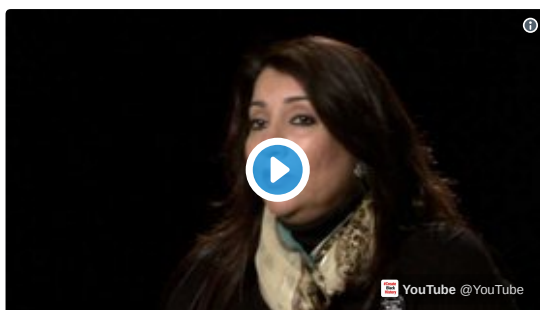


</> Embed

Stigma in Muslim-American Mental Health

A presentation by Farha Abbasi on October 5, 2015 at the University of Michigan for the Investing in Abilities series of events.

by  P. F. Anderson 2 years ago 166 Views



P. F. Anderson
@pfanderson



Farha Abbasi: A Key to Building a Healthier and Resilient Community psychiatry.msu.edu/about/faculty-... | youtube.com/watch?v=NAi-Qk... #iaw15 #iaw2015

4:08 PM - Oct 5, 2015



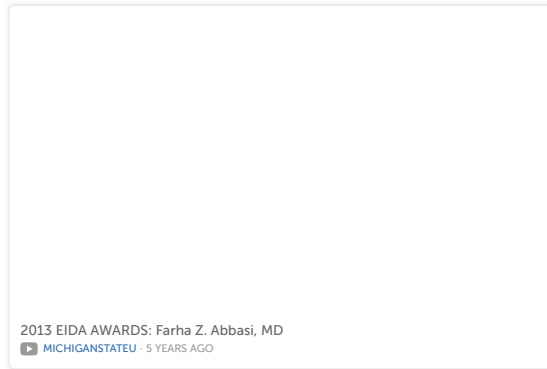
 See P. F. Anderson's other Tweets



Thumbnail for Psychiatry Faculty | Michigan State

[Psychiatry Faculty | Michigan State University | Michigan State University](#)

University | Dr. Abbasi is Assistant Professor in the Department of Psychiatry at Michigan State University and Staff Psychiatrist at the University's Student Health center. She emigrated from Pakistan and settled in the United States in the year 2000 with her husband and three daughters.



2013 EIDA AWARDS: Farha Z. Abbasi, MD
MICHIGANSTATEU · 5 YEARS AGO

Muslim Mental Health Conference
A Key to Building A Healthier and Resilient Community
By Farha Abbasi MD

1 of 70

Farha Abbasi: A Key to Building a Healthier and Resilient Community
UNIVERSITY OF MICHIGAN TAUBMAN HEALTH SCIENCES LIBRARY

P. F. Anderson
@pfanderson

I can't say how PROUD I am of @UMich for hosting Investing in Abilities Month ability.umich.edu/iaw/ #iaw2015 #iaw15

4:07 PM - Oct 5, 2015

See P. F. Anderson's other Tweets

Investing In Ability Week | University of Michigan Council for Disability Concerns

Presented by the University of Michigan Council for Disability Concerns in collaboration with University Human Resources and the University of Michigan Health System. All events are free and everyone is welcome. If accommodations are needed, contact disability@umich.edu at least one week in advance.

UMICH

Only 2 pages have been converted.
Please go to <https://docs.zone> and **Sign Up** to convert all pages.