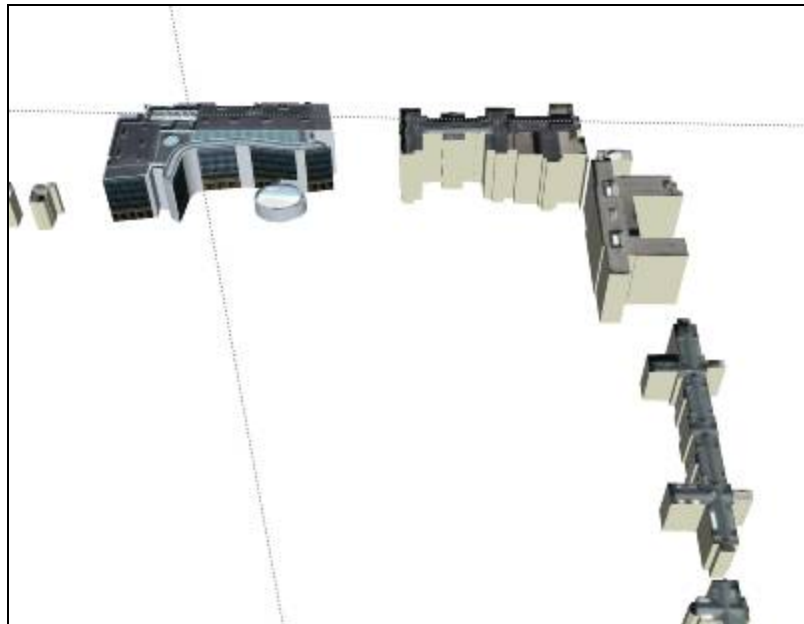



[University of Michigan](#) > Biomedical Science Research Building

Biomedical Science Research Building

 by [Archimedes](#)

Uploaded on June 3, 2007



Feedback

 ★★★★★ [See ratings and reviews](#)

 1 rating [Rate this model](#)

Description

This building on Central Campus is modeled and textured. It serves as the anchor building for the broader region of nearby buildings also found in this file. Use the placemarks in the following .kmz file to locate names of other buildings: <http://www-personal.umich.edu/~sarhaus/GoogleContest/FinalEntry/UnivMichiganCampusTours.kmz>

<http://uuis.umich.edu/cic/buildingproject/index.cfm?BuildingID=509>

Collections

[University of Michigan](#), [University of Michigan: Textured and Partially Textured Building Groups](#), [Ann Arbor](#), [Archimedes' Selected Collection](#)

Tags

[University of Michigan](#), [Ann Arbor](#), [Michigan](#), [Biomedical Science Research Building](#), [BSRB](#)

Available Formats [What's this?](#)

Google SketchUp 6 (.skp)	Download	1 mb
Google SketchUp 5 (.skp)	Download	1 mb
Google Earth 4 (.kmz)	Download	740 kb
Collada (.zip)	Download	740 kb

Model complexity [What's this?](#)



[Link to this page](#) [Include this model in your website](#)

[Report a policy violation](#)

Build 3D models using [Google SketchUp](#). View 3D models using [Google Earth](#) and the [3D Warehouse Network Link](#).

[Privacy Policy](#) - [Terms of Service](#) - [Google Home](#) - [Help](#)

©2007 Google