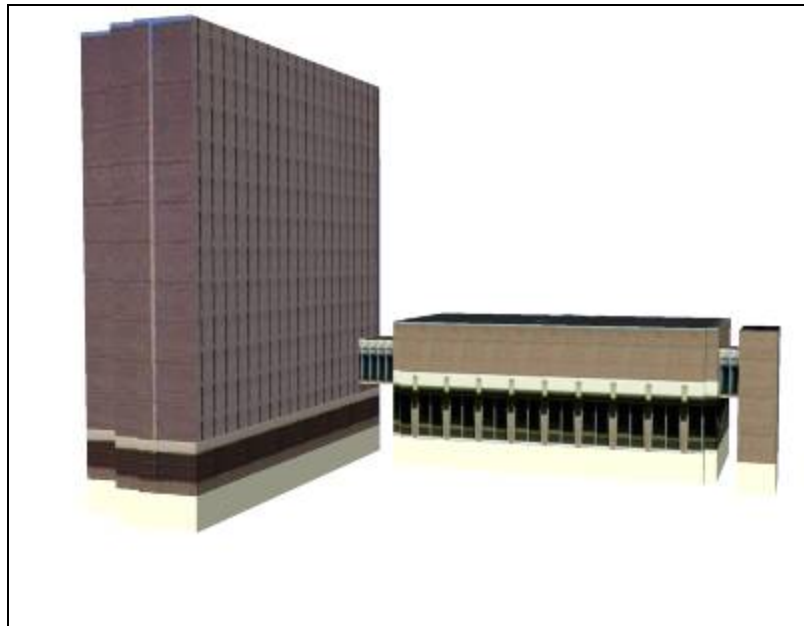



[University of Michigan](#) > Dennison Building

Dennison Building by [Archimedes](#)

Uploaded on June 3, 2007



Feedback

 ★★★★★ [See ratings and reviews](#)

 1 rating [Rate this model](#)

Description

The connected high rise and low rise components form this building, often referred to as the Physics and Astronomy building.

<http://uis.umich.edu/cic/buildingproject/index.cfm?buildingid=47>

Collections

[University of Michigan](#), [University of Michigan: Textured](#), [Archimedes' Selected Collection](#), [Ann Arbor](#)

Tags

[University of Michigan](#), [Ann Arbor](#), [Central Campus](#), [Diag](#), [Dennison Building](#), [Physics and Astronomy Building](#)

Available Formats [What's this?](#)

[Google SketchUp 6 \(.skp\)](#) [Download](#) 174 kb

[Google SketchUp 5 \(.skp\)](#) [Download](#) 174 kb

[Google Earth 4 \(.kmz\)](#) [Download](#) 84 kb

[Collada \(.zip\)](#) [Download](#) 84 kb

Model complexity [What's this?](#)



Simple



Moderate



Complex

[Link to this page](#) [Include this model in your website](#)

[Report a policy violation](#)

Build 3D models using [Google SketchUp](#). View 3D models using [Google Earth](#) and the [3D Warehouse Network Link](#).

[Privacy Policy](#) - [Terms of Service](#) - [Google Home](#) - [Help](#)

©2007 Google