

Models



Search

[Advanced Search](#)

[University of Michigan](#) > Chemistry Building

Chemistry Building

uploaded by: [Archimedes](#) on June 3, 2007

Image

Map

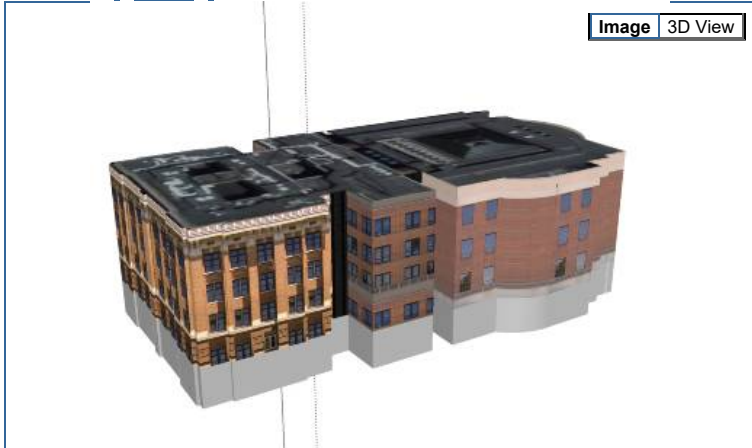


Image 3D View

Views: 388 (9 in 7 days)
Downloads: 141 (1 in 7 days)



Download Model ▼

2 ratings

[See ratings and reviews](#)
[Rate this model](#)



[View in Google Earth](#)



[View on a 3D map](#)

Large single building near the northeast corner of the Diag. It has had substantial additions tacked on over the years.

<http://uis.umich.edu/cic/buildingproject/index.cfm?BuildingID=34>

[Link](#)

[Include](#)

[Report a policy violation](#)

Made with Google SketchUp



This model was made with SketchUp, a 3D modeling tool from Google. [Learn more »](#)

Collections containing this model



[University of Michigan](#)

Related items

More models by [Archimedes](#):



[Literature, Science, and the Arts Building](#)

Other models you might like:



[Dennison Building](#)

Model complexity [What's this?](#)

Simple

Moderate

Complex

Tags

[University of Michigan](#), [Ann Arbor](#), [Diag](#), [Chemistry Building](#)

Models



Search

[Advanced Search](#)

Build 3D models using [Google SketchUp](#). View 3D models using [Google Earth](#) and the [3D Warehouse Network Link](#).