



Search for: Models Collections

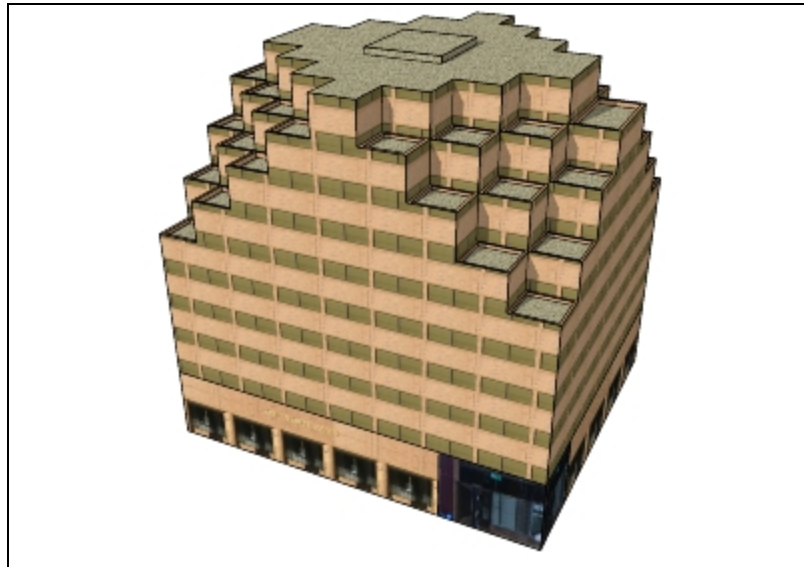


[\[edit breadcrumbs\]](#)

3D Atlas of Ann Arbor, 1N1W, Northwest Corner of Main and Huron Streets. by [Archimedes](#)

Uploaded on November 8, 2006

As the owner, you can [edit](#) or [remove](#).



Feedback

★★★★☆ [See ratings and reviews](#)

4 ratings

Description

Part of the 3D Atlas of Ann Arbor which includes 12 textured blocks and chunky models of remaining buildings in the Downtown Development Authority, along with flood models based on filling contours. Sandra Lach Arlinghaus, sarhaus@umich.edu

<http://www.imagenet.org/>

Collections [Add to my collection...](#)

[Cities In Development - Ann Arbor](#), [Archive Archimedes: Blue Ribbons](#)

Tags

[3D Atlas of Ann Arbor](#), [Ann Arbor](#), [101 N. Main St.](#), [apartment building](#), [multiple use building](#).

Available Formats [What's this?](#)

[Google SketchUp 5 \(.skp\)](#) [Download](#) 992 kb

[Google Earth 4 \(.kmz\)](#) [Download](#) 227 kb

[Collada \(.zip\)](#) [Download](#) 227 kb

Model complexity [What's this?](#)



Moderate Complex

[Link to this page](#) [Include this model in your website](#)

Build 3D models using [Google SketchUp](#). View 3D models using [Google Earth](#) and the [3D Warehouse Network Link](#).

[Privacy Policy](#) - [Terms of Service](#) - [Google Home](#) - [Help](#)

©2007 Google