

RESEARCH ARTICLE

Comparison of two decellularized dermal equivalents

Shiuhyang Kuo¹ | Hyungjin Myra Kim² | Zhifa Wang³ | Eve L. Bingham¹ |
 Atsuko Miyazawa¹ | Cynthia L. Marcelo³ | Stephen E. Feinberg^{1,3} 

¹Department of Oral and Maxillofacial Surgery, School of Dentistry, University of Michigan, Ann Arbor, MI, USA

²Consulting for Statistics, Computing & Analytics Research, University of Michigan, Ann Arbor, MI, USA

³Department of Surgery, Medical School, University of Michigan, Ann Arbor, MI, USA

Correspondence

Stephen E. Feinberg, Department of Oral and Maxillofacial Surgery, University of Michigan, 1150 W Medical Center Drive, MSRB 2, A560B, Ann Arbor, MI, 48109, USA.
 Email: sefein@umich.edu

Funding information

Subcontract Agreement between Rutgers, The State University of New Jersey and Regents of the University of Michigan under AFIRM I, Grant/Award Number: W81XWH-08-2-0034 (SEF)

Abstract

Immunologically inert allogeneic acellular dermal scaffolds provide a matrix with molecular architecture close to native tissues, which synthetic scaffolds cannot. Not all nature-derived scaffolds possess the same biological and physical properties. The different properties of scaffolds supporting cellular growth used for manufacturing tissue engineered grafts could lead to different implantation results. The scaffold properties should be carefully considered in order to meet the expected outcomes of tissue engineered grafts. In this report, we evaluated the cellular growth on AlloDerm® and Allopatch, 2 acellular scaffolds derived from human cadaver skin, using a fabricated 3D organotypic culture with primary human oral keratinocytes to produce an *ex vivo* produced oral mucosa equivalent (EVPOME). A well stratified epithelium could be constructed on both scaffolds. AlloDerm® and Allopatch EVPOMEs were also implanted into severe combined immunodeficiency mice to compare the ingrowth of blood vessels into the dermal component of the two EVPOMEs. Blood vessel counts were 3.3 times higher ($p = .01$) within Allopatch EVPOMEs than within AlloDerm® EVPOMEs. An oral and skin keratinocyte co-culture, separated by a physical barrier to create a cell-free zone, was used to evaluate cell migration on AlloDerm® and Allopatch. Slower cell migration was observed on Allopatch than on AlloDerm®.

KEYWORDS

3D culture, acellular dermal equivalents, keratinocytes, mucocutaneous junction, oral mucosa, scaffold, skin, tissue engineering

1 | INTRODUCTION

Soft tissue, such as oral mucosa and skin, may be necessary for reconstruction after surgeries for tumour removal, congenital defects (cleft lip), or by trauma. The availability of the healthy autografts to repair these defects is limited. To address this issue, we developed a three-dimensional (3D) *in vitro* organotypic culture to fabricate autogenous human tissue-engineered products for intraoral grafting procedures. In addition to clinical applications, the *in vitro* 3D tissue-engineered devices can also provide cellular architecture that mimics the *in situ* native environment allowing us to study how cells function as parts of a whole organ.

Scaffolds are important to support cellular growth in the manufacture of 3D tissue-engineered products. There are various types of scaffolds used for the 3D organotypic culture (Garg, Singh, Arora, & Murthy, 2012; Ko, Lee, Atala, & Yoo, 2013; Moharamzadeh, Brook, Van Noort, Scutt, & Thornhill, 2007). Scaffolds can be synthetic, such as biodegradable polymer; or non-synthetic, such as collagen-, fibrin-,

or gelatin-based scaffolds; or naturally derived scaffolds, such as acellular human cadaver skin with a preserved basement membrane and the extracellular matrix of the dermis (Parmaksiz, Dogan, Odabas, A. E. Elçin, & Y. M. Elçin, 2016). Acellular human cadaver skin scaffolds are immunologically inert with a long history of clinical applications. Two examples of commercially available human cadaver skin derived scaffolds are AlloDerm® and Allopatch. The detailed procedures used to produce AlloDerm® and Allopatch are different. As a result of that, the textures, physical, chemical, and biological properties of these scaffolds may be different from each other as the processes used by the companies to decellularize the dermis are proprietary. The variability in the properties of the decellularized human dermis is a proponent of the process used by each company thus making it necessary to assess the uniqueness of the resulting material prior to clinical use. Two physical properties of scaffolds, porosity and pore size, were reported to be related to cell seeding efficiency, cell penetration, and cell proliferation (Atthoff, Aulin, Adelöw, & Hilborn, 2007; Lee et al., 2011; Perez & Mestres, 2016; Rodina et al., 2017).

For example, larger pore size or higher porosity of scaffold can enhance cell penetration.

In our laboratory, AlloDerm® has been used to manufacture *ex vivo* tissue-engineered oral mucosa products (Khmaldze et al., 2015; Kuo et al., 2015), but Allopatch has not. In this report, we evaluated how cells cultured on AlloDerm® and Allopatch differ in terms of cellular growth and differentiation using *ex vivo* produced oral mucosa equivalents (EVPOMEs) as a study model (Izumi, Takacs, Terashi, & Feinberg, 1999; Kuo et al., 2015). To manufacture an EVPOME, oral keratinocytes are seeded at a high density so that the scaffold surface will be oversaturated with cells. The cell development on AlloDerm® and Allopatch EVPOMEs was examined *in vitro* and *in vivo*. Co-culturing oral and skin keratinocytes were used to create a mucocutaneous junction construct to manufacture a tissue engineered anal sphincter or a lip (Bayar, Kuo, Marcelo, & Feinberg, 2016; Peramo, Marcelo, & Feinberg, 2012; Urbanchek et al., 2016). We applied the principle of the co-culture of oral and skin keratinocytes, separated by a physical barrier, to create an initial cell-free zone to evaluate how cells migrate during cellular differentiation into this zone on these two dermal scaffolds, AlloDerm® and Allopatch.

2 | MATERIALS AND METHODS

2.1 | Cell culture

The University of Michigan Institutional Review Board approved all procedures of harvesting human oral mucosal and skin tissues. The procedures for culturing primary human oral and skin keratinocytes were described previously (Bayar et al., 2016; Kuo et al., 2015). Briefly, primary human oral and skin keratinocytes were enzymatically dissociated using 0.04% and 0.125% trypsin (Sigma-Aldrich, St. Louis, MO, USA), respectively, from the tissue samples, and cell cultures were established in serum free chemically defined culture medium (EpiLife and EDGS, Life Technologies, Grand Island, NY, USA) containing 0.06 mM calcium, 25 µg/ml gentamicin, and 0.375 µg/ml fungizone. Skin keratinocytes were cultured in medium containing 2% serum for the first 24 hr and then switched to serum free medium.

2.2 | Diffusion rate analysis on Allopatch and AlloDerm®

Allopatch (Musculoskeletal Transplant Foundation, Edison, NJ, USA) and AlloDerm® (LifeCell Corporation, Branchburg, NJ, USA) scaffolds were placed onto 6-well transwell inserts (Corning, Corning, NY, USA) in an air-liquid interface and incubated with 0.1% Ponceau S (Thermo Scientific, Waltham, MA, USA) for different time points (1, 3, 24, and 48 hr). They were frozen in optimal cutting temperature compound (Sakura Finetek, Torrance, CA, USA) and then cut into 6 µm sections. Diffusion patterns were histologically evaluated.

2.3 | EVPOMEs manufacturing and histology

AlloDerm® scaffolds were rehydrated in Dulbecco's phosphate buffered saline (DPBS) without calcium chloride and magnesium chloride

(Gibco by Life Technologies, Grand Island, NY, USA) for a total of 1.5 hr to manufacture EVPOMEs using AlloDerm®. Allopatch scaffolds were rehydrated in DPBS for 1.5 hr in the initial protocol but were rehydrated in DPBS overnight for optimized procedures to manufacture EVPOMEs using Allopatch based on the results of the diffusion pattern analysis. The manufacturing of EVPOMEs was reported previously (Izumi et al., 1999; Izumi, Song, & Feinberg, 2004; Kuo et al., 2015). Briefly, 200,000 oral keratinocytes/cm² were seeded on 1 cm-diameter acellular Allopatch and AlloDerm® scaffolds that were presoaked in 0.05 µg/µl human Type IV collagen (Sigma-Aldrich, St. Louis, MO, USA). EVPOMEs were submerged in medium containing 1.2 mM Ca²⁺ for 4 days followed by an air-liquid phase for an additional 7 days. Each EVPOME sample was fixed in 10% formalin, embedded in paraffin, cut into 5 µm sections, and processed by the histology core at the Dental School, University of Michigan for haematoxylin and eosin (H&E) staining. Anti-Ki67 antibody (abcam, Cambridge, MA, USA), used at a dilution of 1:200, was detected by 3, 3'-Diaminobenzidine chromogen with haematoxylin as counterstaining. Prior to implantation of EVPOMEs into severe combined immunodeficiency (SCID) mice, one fifth of each EVPOME sample was removed for histology examination. The remaining EVPOME was implanted into SCID mice for 1 and 2 weeks.

2.4 | 3D co-culture of oral and skin keratinocytes and histology

AlloDerm® and Allopatch scaffolds (3 × 3 cm) were rehydrated in DPBS for 1.5 hr and overnight, respectively. The scaffolds were then coated with 0.05 µg/µl human Type IV collagen. A 2.8 mm-wide barrier was placed on top of the scaffolds to create a cell-free zone between the two cellular areas. The barrier frame was made out of ABSplus plastic by the University of Michigan 3D Laboratory with a Dimension Elite 3D Printer (Stratasys, Eden Prairie, MN, USA). The central space of the frame was filled with polydimethylsiloxane (SYLGARD 184®, Dow Corning, Midland, MI, USA) with a ratio of base to curing agent ranging from 10 to 11 by weight. The polydimethylsiloxane was cured for 24 hr at room temperature followed by an additional 4 hr at 65 °C to complete curing. The setup of 3D co-culture of oral and skin keratinocytes was shown in Figure 5a. The scaffolds were then seeded with 500,000 oral keratinocytes or skin keratinocytes/cm² on either side of the barrier. Cells were cultured in medium containing 0.06 mM calcium. After 24 hr, the medium was completely aspirated out before the barrier was removed. From this point on, the medium used for cell culture contained 1.2 mM calcium. The cells on the dermal equivalent were cultured, submerged, in medium for 4 days followed by an additional 7 days at an air-liquid phase. At the end of culture, the samples were fixed in 10% formalin, embedded in paraffin, cut into 5 µm sections to encompass both oral and skin areas by the histology core at the Dental School, University of Michigan. Anti-K2 antibody (PROGEN Biotechnik, Heidelberg, Deutschland), at a dilution of 1:250, and anti-small proline-rich protein 3 antibody (Sigma-Aldrich, St. Louis, MO, USA), at a dilution of 1:2000, were used to distinguish skin and oral keratinocytes, respectively. Immunohistochemistry signals were detected using 3, 3'-Diaminobenzidine chromogen and haematoxylin as counterstaining.

2.5 | EVPOMEs grafting into SCID mice and postimplanted EVPOME histology

Mouse surgical procedures were described previously (Kuo et al., 2015; Izumie et al., 2003). Ten AlloDerm® and 10 Allopatch EVPOMEs were grafted into 7- to 8-week-old SCID mice (Charles River Laboratories, Wilmington, MA, USA). Five EVPOMEs of each dermal equivalent were assessed at 1 and 2 weeks postimplantation. Each grafted EVPOME was overlaid with a slightly larger sterilized 0.005 in. thickness of silicon sheeting (Specialty Manufacturing, Saginaw, MI, USA) to create a physical barrier between the implant and overlying tissue. Implanted EVPOMEs were removed from mice at 1 and 2 weeks postimplantation. The samples were fixed in 10% formalin, embedded in paraffin, cut into 5 µm sections. Anti-pan-keratin antibody (Abcam, Cambridge, MA, USA; 1:250 dilution) was used on EVPOME samples implanted for 1 week. Anti-CD31 antibody (Dianova, Hamburg, Germany; 1:25 dilution) was used on 2-week implanted EVPOME samples. Immunohistochemistry signals were detected using 3, 3'-Diaminobenzidine chromogen and haematoxylin as counterstaining. Blood vessels that grew into the dermal equivalent, AlloDerm® or Allopatch of the implanted-EVPOMEs were counted from three histology sections for each sample. Each histology section contained four strips of samples that were cut out of each entire implanted EVPOME.

2.6 | Statistics analysis of blood vessels counts integrated into 2-week implantation of EVPOMEs

The experiment included five samples from each of AlloDerm® and Allopatch EVPOMEs and three slides per each sample. Blood vessel counts were collected from each slide with a total of 30 count data (15 AlloDerm® EVPOME slides and 15 Allopatch EVPOME slides). To compare the blood vessel counts between the AlloDerm® EVPOMEs and Allopatch EVPOMEs, a mixed-effects generalized linear model was used with log link and Poisson family to account for larger variance with larger mean counts and with each EVPOME sample as random intercepts to account for the correlation within each sample.

3 | RESULTS

3.1 | 3D organotypic culture on AlloDerm® and Allopatch

The same procedures were used to manufacture AlloDerm® and Allopatch EVPOMEs. We observed that there was quality difference between EVPOMEs using these two types of scaffolds. The photomicrographs of AlloDerm® EVPOME are shown in Column A and Allopatch EVPOME in Column B (Figure 1). H&E histology demonstrated that the AlloDerm® EVPOME has thicker cellular layers and keratin structure overall than the Allopatch EVPOME, which lacked homogeneous cellular layers and keratin (the pink area marked with K). The immunohistochemistry of Ki67 showed that there were more Ki67 positive cells on the AlloDerm® EVPOME than on the Allopatch EVPOME. The thickness of AlloDerm® is 0.4 to 0.5 mm and Allopatch 0.4 to 0.7 mm according to the manufacturers' pamphlets. Allopatch has wider variation of thickness overall compared with AlloDerm®. It prompted us to hypothesize that the thickness of scaffolds may affect medium diffusion rate on AlloDerm® and Allopatch and may play a role on how the nutrition of culture medium was delivered to cells residing on scaffolds/dermal equivalents.

3.2 | Evaluation of diffusion efficiency of AlloDerm® and Allopatch

To test the hypothesis that different methods of decellularization of dermal equivalents can affect the physical characteristics of fluid diffusion rate in AlloDerm® and Allopatch, we incubated the AlloDerm® and Allopatch on an air-liquid interface with a dye, Ponceau S, for various time points. The results are shown in Figure 2. We noticed that the dye diffusion patterns were similar between these two types of scaffolds. That is, the side edge was infiltrated with dye before the inner area. However, Ponceau S dye stained the whole piece of AlloDerm® at the end of 24 hr, although the dye had not reached the top of the Allopatch even after a 48-hr incubation. We used the

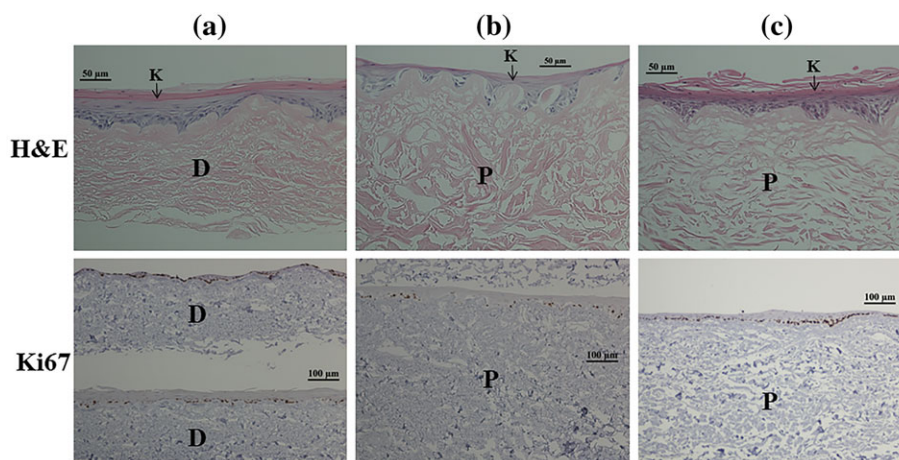


FIGURE 1 Representative pictures of haematoxylin and eosin (H&E) histology and Ki67 immunohistochemistry of EVPOMEs using AlloDerm® (D) and Allopatch (P) as scaffolds. Column A shows the AlloDerm® EVPOME. Columns B and C show the Allopatch EVPOMEs manufactured by the same procedures as for AlloDerm® EVPOMEs and modified procedures, respectively. Scale bars in the H&E row are 50 µm, Ki67 row 100 µm. The keratin layer is marked by a K and an arrow on H&E pictures. The brown spots on the epidermal area of EVPOMEs on the Ki67 row are positive signals of Ki67 [Colour figure can be viewed at wileyonlinelibrary.com]

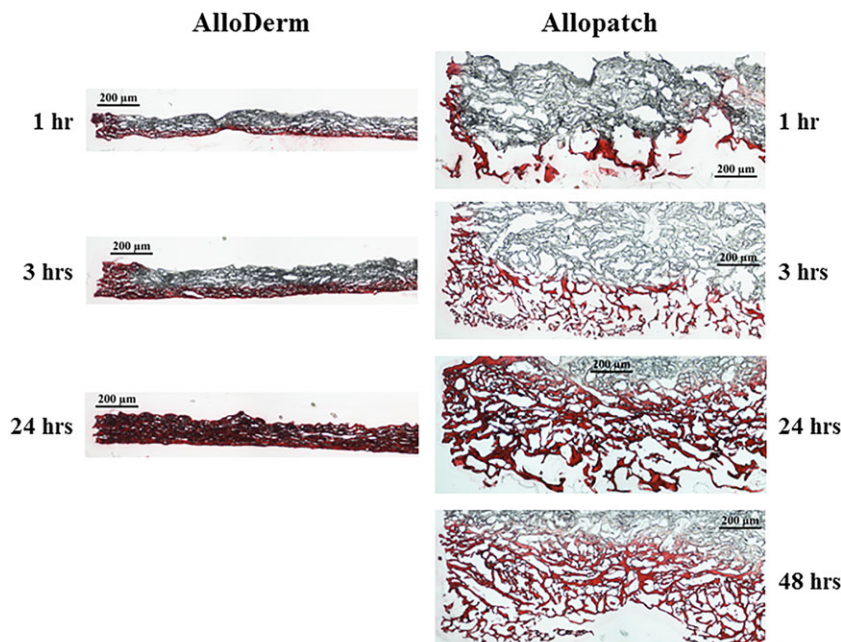


FIGURE 2 Histology pictures of diffusion rate patterns of 0.1% Ponceau S on AlloDerm® and Allopatch at different time points. Scale bars represent 200 µm [Colour figure can be viewed at wileyonlinelibrary.com]

scale bar to measure the diffusion distance of dye on inner area of scaffolds at various time points. The diffusion rates were calculated by diffusion distances and their corresponding time points. The average of diffusion rate for each time point was calculated based on three histology sections. The diffusion rates are for AlloDerm®: 1-hr time point, 30.8 µm/hr; 3-hr time point, 19 µm/hr; for Allopatch: 1-hr time point, 87 µm/hr; 3-hr time point, 83.3 µm/hr; 24-hr time point, 16.1 µm/hr; 48-hr time point, 6.9 µm/hr. We did not calculate the diffusion rates of 24- and 48-hr time points for AlloDerm® because the dye already reached the top of AlloDerm® at 24-hr time point as shown in Figure 2. The higher diffusion rates of Allopatch than AlloDerm were found at shorter time points; however, the much lower diffusion rates of Allopatch were found at longer time points when compared with shorter time points of Allopatch.

3.3 | 3D organotypic culture on Allopatch with procedures of increasing diffusion efficiency

On the basis of the results of diffusion efficiency, we suspected that the cellular stratification of the Allopatch EVPOME could be improved if we increased the diffusion rate of the dermal equivalent, Allopatch. Allopatch was rehydrated in DPBS for 24 hr instead of 1.5 hr before cell seeding. The result of an EVPOME using extended DPBS soaking time is shown in Figure 1 Column C. The stratified cellular layers and keratin structure were significantly improved, and there was an increase in Ki67 positive cells when compared with Allopatch EVPOME (Figure 1 Column B) that was manufactured with 1.5 hr soaking based on multiple repeated experiments.

3.4 | Evaluation of *in vivo* development of implanted AlloDerm® and Allopatch EVPOMEs

The success of an implanted graft depends on its continuous *in vivo* maturation and how well it integrates into host tissue and develops a vascular supply within the dermal equivalent to nourish the overlying

epithelium. In light of that, following the successful *in vitro* quality improvement of Allopatch EVPOMEs, we evaluated and compared the implanted *in vivo* development of both implanted AlloDerm® and Allopatch EVPOMEs.

The results of 10 EVPOMEs (five AlloDerm® and five Allopatch EVPOMEs) implanted into SCID mice for 1 week are shown in Figure 3. AlloDerm® and Allopatch EVPOMEs before implantation are shown on the left column (*in vitro* H&E), and their corresponding 1-week implanted EVPOMEs are shown in the middle (*in vivo* H&E) and right (*in vivo* pan-keratin IHC) columns. Anti-pan-keratin antibody was used to detect continuous stratification of cellular layers and expression of keratin to evaluate reepithelialization on 1-week implanted EVPOMEs. We observed similar epithelialization patterns on both 1 week implantations of AlloDerm® and Allopatch EVPOMEs.

To examine the integration of implanted EVPOMEs into host tissue, we used anti-CD31 antibody to detect the blood vessels ingrown into the dermal equivalents of 2-week implanted EVPOMEs. The distribution of blood vessel counts from the *in vivo* experiment is shown in Figure 4a where higher blood vessel counts were seen for Allopatch EVPOME samples than AlloDerm® EVPOME samples. The comparison of mean counts using the mixed-effects generalized linear model showed 3.3 times (95% confidence interval [1.3, 8.4], $p = .01$) higher counts in Allopatch EVPOME samples compared with AlloDerm® EVPOME samples. The representative pictures of CD31 immunohistochemistry are shown in Figure 4b.

3.5 | Evaluation of *in vitro* cellular migration on AlloDerm® and Allopatch

By extending the DPBS soaking time on Allopatch, we could manufacture Allopatch EVPOMEs with cellular structure comparable to AlloDerm® EVPOMEs *in vitro*. Our EVPOMEs *in vivo* study also demonstrated that both implanted AlloDerm® and Allopatch EVPOMEs had similar epithelialization patterns. These results demonstrated the stratification of cellular growth on AlloDerm® and

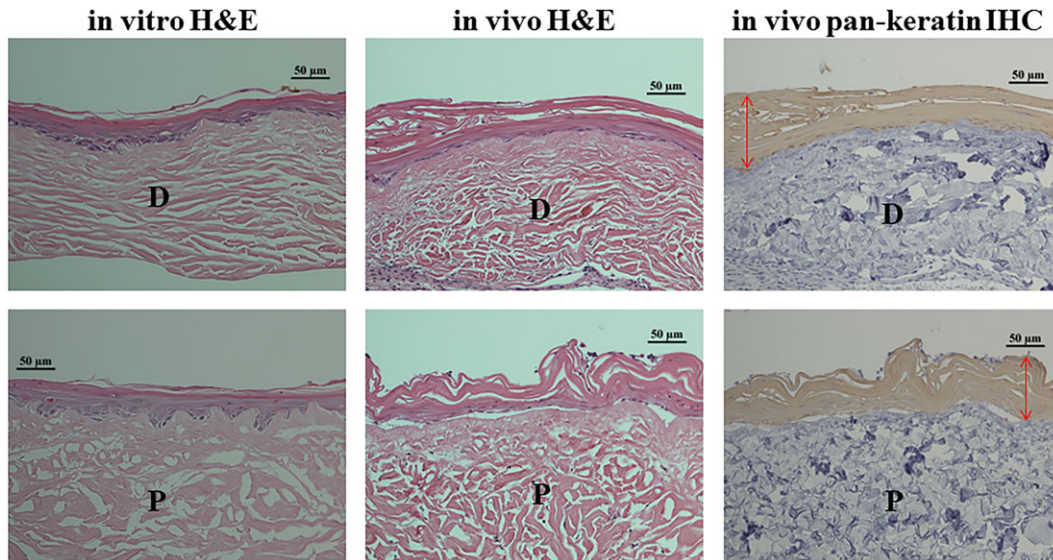


FIGURE 3 Evaluation of *in vivo* development of implanted AlloDerm® and Allopatch EVPOMEs. Before (*in vitro*) and corresponding 1 week after (*in vivo*) EVPOMEs implantation are shown in haematoxylin and eosin (H&E) and pan-keratin immunohistochemistry (IHC; only *in vivo* shown for pan-keratin IHC). Red arrows indicate the areas of continuous development of implanted EVPOMEs examined by anti-pan keratin antibody. D and P represent AlloDerm® and Allopatch, respectively. Scale bars represent 50 μm [Colour figure can be viewed at wileyonlinelibrary.com]

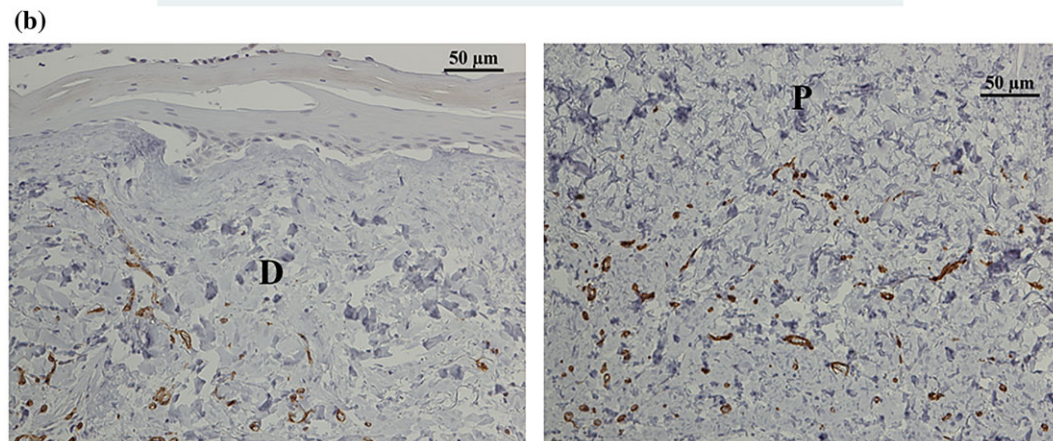
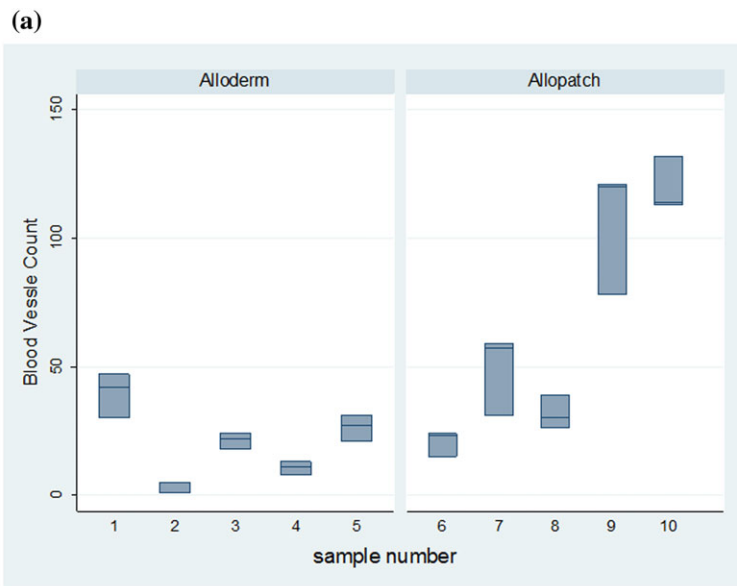


FIGURE 4 Statistical data of neovascularization and CD31 immunohistochemistry pictures of implanted AlloDerm® and Allopatch EVPOMEs. (a) The distribution of blood vessel counts. (b) Representative pictures of neovascularization within implanted EVPOMEs detected by anti-CD31 antibody shown in brown. D and P represent AlloDerm® and Allopatch, respectively. Scale bars represent 50 μm [Colour figure can be viewed at wileyonlinelibrary.com]

Allopatch EVPOMEs were comparable to each other when both were seeded with high cell density (200,000 cells/cm²). We were interested in how the cellular migration would progress on these two different types of scaffolds for manufacturing a mucocutaneous junction construct. To examine this phenomenon, we created a cell-free zone by placing a barrier on top of the scaffold/dermal equivalent. Oral and skin keratinocytes were then seeded on both external sides of the barrier creating an internal cell-free zone. Cells were allowed to merge or migrate towards one another gradually after the barrier was removed 24 hr after cell seeding. The set-up of this culture is shown in Figure 5a. The width of the barrier was 2.8 mm. We used a biomarker, small proline-rich protein 3, which was specific for oral keratinocytes (Bayar et al., 2016; Katou et al., 2003). The biomarker, cytokeratin protein K2, was used to identify skin keratinocytes specifically based on The Human Protein Atlas website (<http://www.proteinatlas.org>). We checked the expression of K2 on both native skin and gingivae tissues, and found K2 only expressed in skin, but not in gingivae (data not shown). The total culture time for both AlloDerm® and Allopatch 3D organotypic oral/skin co-cultures was 12 days. The results are shown in Figure 5b and 5c. We observed that the oral and skin keratinocytes could merge/migrate towards one another at the end of 12 days culture on AlloDerm® (Figure 5b); however, there was still a cell-free gap between oral and skin cells on Allopatch (Figure 5c). This result indicated that cells proliferated or migrated slower on the surface of Allopatch than on AlloDerm®; and it would require more culture time for Allopatch to fill the cell-free zone than AlloDerm®.

4 | DISCUSSION

It is critical to choose the appropriate scaffold with ideal physical properties, such as biocompatibility and porosity, to ensure the success of tissue engineering products in hosts. Natural derived scaffolds can offer molecular complexity and architecture of the native tissue matrices to support cellular growth that synthetic scaffolds cannot for tissue engineering products. However, the natural derived scaffolds from decellularized human cadaver skins do not warrant the same outcomes of cellular development on these scaffolds, because they may possess different physical and biology properties (Barber & Aziz-Jacobo, 2009; Luo et al., 2015) produced with proprietary manufacturing procedures by different companies. We used EVPOMEs as a study model (Izumi et al., 1999; Kuo et al., 2015) to evaluate how cultured keratinocytes developed on two allogeneic natural human decellularized scaffolds, AlloDerm® and Allopatch.

It is appropriate to suggest that the quality of 3D tissue engineering products using AlloDerm® and Allopatch as scaffolds should be the same or similar to each other. Unexpectedly, our data showed that AlloDerm® and Allopatch EVPOMEs carried very different *in vitro* cellular development and diffusion results. Rete pegs could be observed on both EVPOMEs; however, the lack of cellular structures or thinner cellular layers between rete pegs on Allopatch EVPOMEs was obvious. In addition, Allopatch EVPOMEs had a lower density of Ki67 positive cells. Kato, Marcelo, Washington, Bingham, and Feinberg (2015) reported that the thickness of scaffolds could affect the outcome of EVPOMEs due to different medium diffusion rates among various

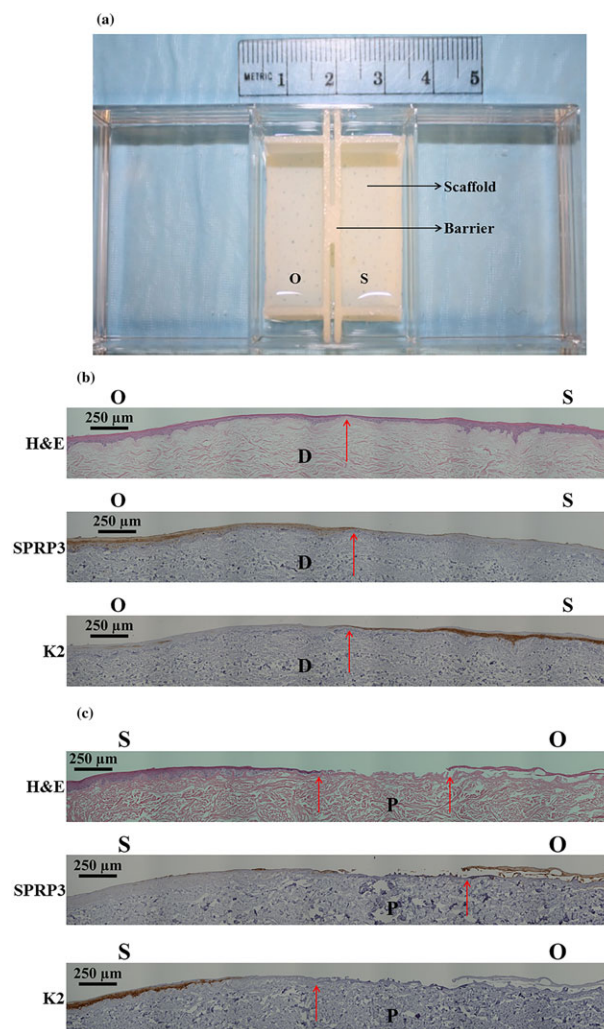


FIGURE 5 3D organotypic co-culture of oral and skin keratinocytes. (a) The setup of skin and oral keratinocytes co-cultured on scaffold. O is oral keratinocyte culture area, and S is skin keratinocyte culture area. The barrier placed on top of a scaffold was used to create an initial cell-free zone during the first 24 hr of culture. (b) and (c) haematoxylin and eosin (H&E), small proline-rich protein 3 (SPRP3), and K2 histology pictures of the oral and skin keratinocytes co-cultures on AlloDerm® (Figure 5b) and Allopatch (Figure 5c). Sections next to each other were shown for each 3D culture sample. O represents oral keratinocytes side, and S represents skin keratinocytes side. Red arrows represent the points of maximum migration of either oral or skin keratinocytes on AlloDerm® marked by D, or Allopatch marked by P. Oral and skin keratinocytes merged after successful migration towards each other on AlloDerm®, although there is a cell-free gap on Allopatch. Scale bars represent 250 μm [Colour figure can be viewed at wileyonlinelibrary.com]

scaffolds thicknesses. The thickness of AlloDerm® is 0.4 to 0.5 mm and Allopatch 0.4 to 0.7 mm. Allopatch has less homogenous thickness compared with AlloDerm®, which could cause the outcomes that we observed histologically. The much lower diffusion rates of Allopatch at longer time points suggested that molecules were more difficult to move up when they were close to the epidermal (cell seeding) side. Our dye, Ponceau S, diffusion rate results supported that different medium diffusion rates could cause the thin cellular layers on Allopatch EVPOME. After improving the diffusion rate on Allopatch by soaking

for an extended period of time, we could produce Allopatch EVPOMEs with a well-stratified epithelial layer and rete ridge structure similar to AlloDerm® EVPOMEs. The same was true of the implanted tissue engineered grafts (Izumi, Feinberg, Terashi, & Marcelo, 2003; Kuo et al., 2015; Yoshizawa et al., 2012). Previously, we reported that the expression of glucose transporter 1, GLUT1, and the consumption of glucose were reduced in the poorly developed EVPOMEs (Kato et al., 2015). It suggests that glucose is the potential diffusion molecule affected by the diffusion rate. The manipulation of Allopatch to increase medium diffusion rate is critical to produce a high quality EVPOME and to optimize its postimplant cellular development.

Scaffold porosity and pore size can affect cell penetration and cell proliferation (Lee et al., 2011; Perez & Mestres, 2016; Rodina et al., 2017). Larger pore size or higher porosity of scaffold can enhance cell penetration. It is possible that the physical properties on the basal membrane side (cell seeding side) of Allopatch can be affected by longer rehydration time. Cell penetration can be improved if pore sizes are larger or porosity is higher on the basal membrane side of Allopatch following longer rehydration time. It is also possible that a longer rehydration time of Allopatch can improve the interaction with later coated collagen thus increases the cell seeding efficiency and cell proliferation on Allopatch. We experimented 24-hr rehydration time twice on AlloDerm®, but we did not observe significant improvement of cellular stratification on AlloDerm® EVPOME. However, we cannot exclude the possibility that the harmful residues left behind in Allopatch during the decellularization process was removed after longer rehydration time, which improved the quality of Allopatch EVPOME.

Neovascularization is a crucial factor to determine the success of the implanted tissue engineered grafts (Iida, Takami, Yamaguchi, Shimazaki, & Harii, 2005; Izumi, Neiva, & Feinberg, 2013; Kuo et al., 2015). Higher blood vessel counts were seen for Allopatch EVPOME samples than AlloDerm® EVPOME samples. Luo et al. (2015) suggested that a possible factor that could contribute to the difference of neovascularization between AlloDerm® and Allopatch EVPOMEs was the variation of the dense fibrous tissue between AlloDerm® and Allopatch. On the basis of histology morphology, Allopatch possesses a less dense collagen matrix as shown in dye diffusion histology, which could allow easier invasion of blood vessels into Allopatch. In other words, Allopatch may have better porosity than AlloDerm® that allows adequate intrinsic vascularization (Will et al., 2008). The combination of various freeze drying process and collagen concentrations may lead to different pore sizes in scaffolds (Faraj, van Kuppevelt, & Daamen, 2007; Madaghiele, Sannino, Yannas, & Spector, 2008). We suspect that the different freezing temperatures and, possible, solute concentrations used to process the human cadaver skin are different between manufacturing Allopatch and AlloDerm®. Because both decellularization protocols are proprietary, we could not compare the two different processes.

By combining the extended soaking time of DPBS on Allopatch with a high cell seeding density to saturate the scaffold, we could manufacture an equivalent quality of AlloDerm® and Allopatch EVPOMEs. This suggests that a scaffold can execute cellular differentiation/stratification when a certain level of medium diffusion rate is met. However, our 3D tissue engineered products using an oral and skin keratinocytes co-culture system showed that the medium diffusion

rate may not be the only factor related to cell migration on certain scaffolds, such as Allopatch in our study. Kim, Chen, Wilke, Schall, and Woodley (1994) showed that Type IV collagen surface could enhance both keratinocyte attachment and migration. Both AlloDerm® and Allopatch were coated with type IV collagen in our culture system. The scaffold surface molecular structure could be damaged during the decellularization manufacturing process, which could affect the contribution of collagen to cell migration on the scaffold surface. This might affect Allopatch more than AlloDerm®. One may propose that the increase of culture time should allow gaps to be filled on Allopatch EVPOMEs. However, a lengthy culture time does not always parallel the quality of 3D tissue engineered products (Izumi et al., 2003; Izumi et al., 2004).

The goal of a tissue engineered product is allowing the graft to be integrated into the host quickly to maintain cell viability and providing a regenerated tissue with similar native structure and function. An adequate formation of blood vessels on an implanted graft is required to allow the above phenomena to happen. Allopatch could be an advantageous choice compared with AlloDerm®, because there are more blood vessels formed within Allopatch than AlloDerm®. On the other hand, when cell migration is expected to happen in a timely manner on the scaffold surface, then Allopatch may lose its competitive edge to AlloDerm® when *ex vivo* tissue engineered products are executed. Our *in vitro* and *in vivo* data showed that not all natural derived scaffolds are equal in all perspectives regardless of their common source. The biology and physical properties of various scaffolds should be carefully considered in making the appropriate choice in order to meet the expected outcomes of tissue engineered grafts.

ACKNOWLEDGMENTS

This study was funded by a Subcontract Agreement between Rutgers, The State University of New Jersey and Regents of the University of Michigan under AFIRM I Contract W81XWH-08-2-0034 (SEF). Authors thank Kristina Fields from The Histology and Immunohistochemistry Service Core of UMCCC, the University of Michigan for immunohistochemistry.

CONFLICT OF INTEREST

The authors have declared that there is no conflict of interest associated with this publication.

ORCID

Stephen E. Feinberg  <http://orcid.org/0000-0003-3292-8797>

REFERENCES

- Atthoff, B., Aulin, C., Adelöw, C., & Hilborn, J. (2007). Polarized protein membrane for high cell seeding efficiency. *Journal of Biomedical Materials Research. Part B, Applied Biomaterials*, 83(2), 472–480.
- Barber, F. A., & Aziz-Jacobo, J. (2009). Biomechanical testing of commercially available soft-tissue augmentation materials. *Arthroscopy*, 25(11), 1233–1239.
- Bayar, G. R., Kuo, S., Marcelo, C. L., & Feinberg, S. E. (2016). In vitro development of a mucocutaneous junction for lip reconstruction. *Journal of Oral and Maxillofacial Surgery*, 74(11), 2317–2326.

- Faraj, K. A., van Kuppevelt, T. H., & Daamen, W. F. (2007). Construction of collagen scaffolds that mimic the three-dimensional architecture of specific tissues. *Tissue Engineering*, 13(10), 2387–2394.
- Garg, T., Singh, O., Arora, S., & Murthy, R. S. R. (2012). Scaffold: A novel carrier for cell and drug delivery. *Critical Reviews™ in Therapeutic Drug Carrier Systems*, 29(1), 1–63.
- Iida, T., Takami, Y., Yamaguchi, R., Shimazaki, S., & Harii, K. (2005). Development of a tissue-engineered human oral mucosa equivalent based on an acellular allogeneic dermal matrix: A preliminary report of clinical application to burn wounds. *Scandinavian Journal of Plastic and Reconstructive Surgery and Hand Surgery*, 39(3), 138–146.
- Izumi, K., Feinberg, S. E., Terashi, H., & Marcelo, C. L. (2003). Evaluation of transplanted tissue-engineered oral mucosa equivalents in severe combined immunodeficient mice. *Tissue Engineering*, 9(1), 163–174.
- Izumi, K., Neiva, R. F., & Feinberg, S. E. (2013). Intraoral grafting of tissue-engineered human oral mucosa. *The International Journal of Oral & Maxillofacial Implants*, 28(5), e295–e303.
- Izumi, K., Song, J., & Feinberg, S. E. (2004). Development of a tissue-engineered human oral mucosa: From the bench to the bed side. *Cells, Tissues, Organs*, 176(1-3), 134–152.
- Izumi, K., Takacs, G., Terashi, H., & Feinberg, S. E. (1999). Ex vivo development of a composite human oral mucosal equivalent. *Journal of Oral and Maxillofacial Surgery*, 57(5), 571–577.
- Kato, H., Marcelo, C. L., Washington, J. B., Bingham, E. L., & Feinberg, S. E. (2015). Fabrication of large size ex vivo-produced oral mucosal equivalents for clinical application. *Tissue Engineering. Part C, Methods*, 21(9), 872–880.
- Katou, F., Shirai, N., Kamakura, S., Tagami, H., Nagura, H., & Motegi, K. (2003). Differential expression of cornified cell envelope precursors in normal skin, intraorally transplanted skin and normal oral mucosa. *The British Journal of Dermatology*, 148(5), 898–905.
- Khmaladze, A., Kuo, S., Kim, R. Y., Matthews, R. V., Marcelo, C. L., Feinberg, S. E., & Morris, M. D. (2015). Human oral mucosa tissue-engineered constructs monitored by Raman fiber-optic probe. *Tissue Engineering. Part C, Methods*, 21(1), 46–51.
- Kim, J. P., Chen, J. D., Wilke, M. S., Schall, T. J., & Woodley, D. T. (1994). Human keratinocyte migration on type IV collagen. Roles of heparin-binding site and alpha 2 beta 1 integrin. *Laboratory Investigation*, 71(3), 401–408.
- Ko, I. K., Lee, S. J., Atala, A., & Yoo, J. J. (2013). In situ tissue regeneration through host stem cell recruitment. *Experimental & Molecular Medicine*, 45. e57
- Kuo, S., Zhou, Y., Kim, H. M., Kato, H., Kim, R. Y., Bayar, G. R., ... Feinberg, S. E. (2015). Biochemical indicators of implantation success of tissue-engineered oral mucosa. *Journal of Dental Research*, 94(1), 78–84.
- Lee, J. B., Jeong, S. I., Bae, M. S., Yang, D. H., Heo, D. N., Kim, C. H., ... Kwon, I. K. (2011). Highly porous electrospun nanofibers enhanced by ultrasonication for improved cellular infiltration. *Tissue Engineering. Part A*, 17(21-22), 2695–2702.
- Luo, X., Kulig, K. M., Finkelstein, E. B., Nicholson, M. F., Liu, X. H., Goldman, S. M., ... Neville, C. M. (2015). In vitro evaluation of decellularized ECM-derived surgical scaffold biomaterials. *Journal of Biomedical Materials Research. Part B, Applied Biomaterials*. <https://doi.org/10.1002/jbm.b.33572>
- Madaghiele, M., Sannino, A., Yannas, I. V., & Spector, M. (2008). Collagen-based matrices with axially oriented pores. *Journal of Biomedical Materials Research. Part A*, 85(3), 757–767.
- Moharamzadeh, K., Brook, I. M., Van Noort, R., Scutt, A. M., & Thornhill, M. H. (2007). Tissue-engineered oral mucosa: A review of the scientific literature. *Journal of Dental Research*, 86(2), 115–124.
- Parmaksiz, M., Dogan, A., Odabas, S., Elçin, A. E., & Elçin, Y. M. (2016). Clinical applications of decellularized extracellular matrices for tissue engineering and regenerative medicine. *Biomedical Materials*, 11(2), 022003
- Peramo, A., Marcelo, C. L., & Feinberg, S. E. (2012). Tissue engineering of lips and muco-cutaneous junctions: In vitro development of tissue engineered constructs of oral mucosa and skin for lip reconstruction. *Tissue Engineering. Part C, Methods*, 18(4), 273–282.
- Perez, R. A., & Mestres, G. (2016). Role of pore size and morphology in musculo-skeletal tissue regeneration. *Materials Science & Engineering. C, Materials for Biological Applications*, 61, 922–939.
- Rodina, A. V., Tenchurin, T. K., Saprykin, V. P., Shepelev, A. D., Mamagulashvili, V. G., Grigor'ev, T. E., ... Severin, S. E. (2017). Proliferative and differentiation potential of multipotent mesenchymal stem cells cultured on biocompatible polymer scaffolds with various physico-chemical characteristics. *Bulletin of Experimental Biology and Medicine*, 162(4), 488–495.
- Urbanek, M. G., Kuo, S., Wang, Z., Moon, J. D., Bingham, E. L., Mays, E. A., ... Feinberg, S. E. (2016). Dynamic functioning of latissimus Dorsi muscle Neo Sphincters compared to native anal sphincters in the rat DDW. San Diego, CA. May 21-24. *Gastroenterology*, 150(4), S1194.
- Will, J., Melcher, R., Treul, C., Travitzky, N., Kneser, U., Polykandriotis, E., ... Greil, P. (2008). Porous ceramic bone scaffolds for vascularized bone tissue regeneration. *Journal of Materials Science. Materials in Medicine*, 19(8), 2781–2790.
- Yoshizawa, M., Koyama, T., Kojima, T., Kato, H., Ono, Y., & Saito, C. (2012). Keratinocytes of tissue-engineered human oral mucosa promote re-epithelialization after intraoral grafting in athymic mice. *Journal of Oral and Maxillofacial Surgery*, 70(5), 1199–1214.

How to cite this article: Kuo S, Kim HM, Wang Z, et al. Comparison of two decellularized dermal equivalents. *J Tissue Eng Regen Med*. 2018;12:983–990. <https://doi.org/10.1002/term.2530>