

## **A comparative prospective observational study of children and adults with immune thrombocytopenia: 2-year follow-up**

Running title: Follow-up analysis of PARC-ITP data

Alexandra Schifferli<sup>1</sup>, Andreas Holbro<sup>2</sup>, Meera Chitlur<sup>3</sup>, Michael Coslovsky<sup>4</sup>, Paul Imbach<sup>5</sup>, Hugo Donato<sup>6</sup>, Mohsen Elalfy<sup>7</sup>, Graciela Elena<sup>8</sup>, John Grainger<sup>9</sup>, Susanne Holzhauser<sup>10</sup>, Cecilia Riccheri<sup>11</sup>, Francesco Rodeghiero<sup>12</sup>, Marco Ruggeri<sup>13</sup>, Hannah Tamary<sup>14</sup>, Tatjana Uglova<sup>15</sup>, Runhui Wu<sup>16</sup>, and Thomas Kühne<sup>1,5</sup>, for The Intercontinental Cooperative ITP Study Group (ICIS)

<sup>1</sup>Department of Hematology/Oncology, University Children's Hospital Basel, Basel, Switzerland

<sup>2</sup>Department of Hematology, University Hospital Basel, Basel, Switzerland

<sup>3</sup>Carmen and Ann Adams Department of Pediatrics, Division of Hematology/Oncology, Children's Hospital of Michigan, Wayne State University, Detroit, Michigan, USA

<sup>4</sup>Clinical Trial Unit, University Hospital Basel, Basel, Switzerland

<sup>5</sup>Chairperson Intercontinental Cooperative ITP Study Group (ICIS), Basel, Switzerland

<sup>6</sup>Hematology/Oncology, Hospital del Niño de San Justo, San Justo, Buenos Aires, Argentina

<sup>7</sup>Pediatric Hematology and Oncology, Pediatric Hospital Ain Shams University, Cairo, Egypt

<sup>8</sup>Department of Hematology-Oncology Pedro de Elizalde, Children Hospital Buenos Aires, Buenos Aires, Argentina

<sup>9</sup>Department of Haematology, Royal Manchester Children's Hospital, Manchester, UK

<sup>10</sup>Department of Pediatric Hematology and Oncology, Charité, Berlin, Germany

<sup>11</sup>Servicio de Pediatría Hospital Alejandro Posadas Buenos Aires, Buenos Aires, Argentina

<sup>12</sup>Department of Cell Therapy and Hematology, San Bortolo Hospital, Vicenza, Italy

<sup>13</sup>Hematology Department, San Bortolo Hospital, Vicenza, Italy

<sup>14</sup>Hematology Unit, Schneider Children's Medical Center of Israel, Petah Tikva, Sackler Faculty of Medicine, Tel Aviv University, Tel Aviv, Israel

<sup>15</sup>Department of Clinical Research, Belarusian Research Center of Pediatric Oncology, Hematology and Immunology, Minsk, Belarus

<sup>16</sup>Hematology Oncology Center, Beijing Children's Hospital Capital, Beijing, China

A complete list of members of the ICIS appears in the Appendix

*Presented in abstract form at the 58th annual meeting of the American Society of Hematology, San Diego, December 3-6, 2016.*

This is the author manuscript accepted for publication and has undergone full peer review but has not been through the copyediting, typesetting, pagination and proofreading process, which may lead to differences between this version and the [Version of record](#). Please cite this article as [doi:10.1002/ajh.25086](https://doi.org/10.1002/ajh.25086).

**Corresponding author:**

Dr. A. Schifferli

Department of Oncology/Hematology, University Children's Hospital Basel

Spitalstrasse 33, 4031 Basel, Switzerland

E-mail: [alexandra.schifferli@ukbb.ch](mailto:alexandra.schifferli@ukbb.ch)

Telephone: 0041 61 704 12 12

FAX: 0041 61 704 12 13

**Original research article, Regular Article**

Abstract word count: 214

Text word count: 4140

References: 47

Tables: 2

Figures: 2

Appendix: Members of the ICIS

**Key words:**

**ITP, natural history, registry, immune thrombocytopenia, children and adults**

**Abstract**

Comparative clinical studies of children and adults with immune thrombocytopenia (ITP) are poorly covered in the literature. However, the accepted classification of ITP —childhood ITP and adult ITP— results in considerable differences in treatment protocols and practice guidelines. The analysis of the Pediatric and Adult Registry on Chronic ITP (PARC-ITP) of patients at first presentation demonstrated fewer differences in clinical and laboratory findings at initial diagnosis between children and adults than expected. The present report of 2-year follow-up data supports the hypothesis that there are common aspects of childhood and adult ITP. Data of 3360 children and 420 adults were collected during the time of 2004 until 2015 at initial diagnosis. Follow-up information was available for 51% and 33% of children and 66% and 49% of adults at 12- and 24-months, respectively. Similarities were found in unexpected areas of ITP, such as the rate of late remission at 12 and 24 months, reported bleeding sites, platelet count in bleeders, and the frequency of treated patients with persistent or chronic ITP. Differences were confirmed for the overall rate of remission and treatment modalities. Unexpected differences were found in the percentage of non-bleeders, with more adults in the non-bleeder group. More studies are needed to investigate different age groups with the aim to optimize their management.

Author Manuscript

## Introduction

Immune thrombocytopenia (ITP) is a diagnosis of exclusion and can be caused by multiple disease mechanisms including a variety of antiplatelet autoantibodies, cytotoxic T lymphocyte-mediated platelet destruction, T- and B-cell abnormalities with disturbed cytokine profiles, and impaired megakaryopoiesis.<sup>1-5</sup> Clinically, ITP of children differs from that of adults in spontaneous remission rate, bleeding pattern, and treatment need.<sup>6-10</sup> While approximately 80% of children are disease-free within 1 year, most adults (70%–80%) show a chronic course.<sup>11</sup> Adults have a higher bleeding risk; thus, pharmacological treatment and splenectomy are more often required in adults than in children,<sup>9,10</sup> whereas a watch and wait strategy is a standard approach for children with no or mild bleeding.<sup>9,10</sup> However, some of these clinical presumptions are limited by inconsistent study designs, study populations, collected information (e.g., bleeding assessment tools), definitions, study objectives, and end-points. Initial data of the Pediatric and Adult Registry on Chronic ITP (PARC-ITP) were previously published and demonstrated considerably smaller differences in clinical and laboratory findings at disease onset between children and adults than expected.<sup>12</sup> Moreover, recent studies showed that the severity of thrombocytopenia at diagnosis was a predictor of recovery from ITP in both children and adults.<sup>13,14</sup> The classification of pediatric and adult ITP may not adequately reflect clinical requirements. Sub-classifying patients based on phenotypic characteristics, including insidious or abrupt onset and grade of bleeding, describe ITP more accurately and consequently affect management decisions and probably better predict persistent or chronic ITP.

Understanding differences and similarities between children and adults with ITP will improve individual diagnosis and management. We aimed to assess and interpret comparative follow-up (FU) PARC-ITP Registry data in children and adults with ITP.

## Methods

The PARC-ITP is an international multi-center registry designed to collect data prospectively in children and adults with newly diagnosed ITP. The registry is a project of the Intercontinental Cooperative Immune Thrombocytopenia Study Group (ICIS, [www.itpbasel.ch](http://www.itpbasel.ch)) and is based on voluntary participation of pediatricians and adult hematologists worldwide. ICIS was founded in 1997 by pediatric hematologists to analyze multiple diagnostic and therapeutic aspects of ITP. Over the years, it was realized that a joint database for children and adults may facilitate better understanding of ITP. In May 2004, PARC-ITP was initiated to study the natural history of ITP in all age groups and develop and coordinate new hypotheses and projects.

ICIS is meanwhile well-established and active at various scientific congresses, and holds expert meetings every 3 years.<sup>15-19</sup>

The protocol, registration of data, and all registry documents are available via secure internet access ([www.parc-ityp.net](http://www.parc-ityp.net)). Data acquisition by investigators was performed by direct internet access into a database that is administered in the ICIS office in Basel, Switzerland ([www.itypbasel.ch](http://www.itypbasel.ch)). Data are continuously registered at the time of diagnosis, at 6 and 12 months, and then yearly and include demographics, diagnostics, clinical data, and safety data of treatments. The questionnaires' structure is limited by a certain number of questions to maintain feasibility data transfer and collaboration of investigators. Data quality controlling and cleaning is performed at the office in Basel. ITP was defined according to the International Working Group (IWG) definitions.<sup>20</sup> Patients with missing FU data at certain time points (6, 12, and 24 months) were included in the analysis (Supporting Information Figure S1A). Secondary ITP was excluded from registration; patients in whom the diagnosis was revised from primary to secondary ITP or thrombocytopenia of other cause during FU were prospectively identified, and not excluded from the analysis. Ethical committee approval and informed consent were received from all patients.<sup>12,21</sup>

Data are reported using descriptive statistics. Frequencies and percentages are reported for counts and categorical variables. Continuous variables are reported as mean  $\pm$  standard deviation (SD). Median and interquartile range (IQR) are reported for age and platelet count in Table 1.

Categorical variables were analyzed using Chi-square tests. Continuous variables between groups were compared using the non-parametric Wilcoxon's test. Cumulative incidences between groups were compared using the non-parametric log-rank test. A p-value of  $<0.05$  was considered statistically significant. Analyses were performed using R Development Core Team, version 3.4.0.<sup>22</sup>

### **Definitions**

If not mentioned otherwise, the definitions of the IWG were used.<sup>20</sup>

Patients were divided into two groups according to age at initial diagnosis. *Children* were defined as 3 months to 16 years of age, and *adults* as  $>16$  years. For certain analyses, the adult group was divided into three subgroups including *young adults* (16–40 years), *midlife adults* (40–60 years), and *seniors* ( $>60$  years). *Age* refers to the age at first presentation of ITP, equating to the initial visit.

*FU data at 6 months* summarize the clinical course (e.g., bleeding and management) of the disease in the first 6 months (excluding information at initial diagnosis); *FU data at 12 months* summarize the clinical course during  $>6$ –12 months, and *FU data at 24 months* include the time during  $>12$ –24 months. Platelet counts were registered as a single value (mean  $\pm$  SD) at approximately 6 ( $175 \pm 47$  days), 12 ( $365 \pm 66$  days), and 24 months ( $722 \pm 59$  days).

*Remission* of ITP: "Remission" in an autoimmune disease refers to the reoccurrence of tolerance and is difficult or even impossible to measure. We used the term "remission" to define ITP activity as assessed by the platelet count irrespective of prior or ongoing therapy. According to our definition, a platelet count of  $>100 \times 10^9/L$  at 6, 12, and 24 months of follow-up visits is considered a "remission."

*Persistent ITP* was defined as a platelet count  $<100 \times 10^9/L$  at 6 months, and *chronic disease* as a

platelet count  $<100 \times 10^9/L$  at 12 and/or 24 months. According to the IWG, the definition of persistent ITP covers the period between 3 and 12 months. The registry only records data at 6 months. *Ongoing ITP* was defined as patients with persistent or chronic ITP. *Late remission at 12 months* characterized patients with ongoing disease at 6 months but who were in remission at 12 months. *Late remission at 24 months* characterized patients with ongoing disease at 6 and/or 12 months but who were in remission at 24 months.

*Bleeding* was defined as any bleeding event in the last recorded time period, independently of intensity or frequency. *Location of bleeding* was recorded for all bleeding events in the last time period and not per event.

*Corticosteroid therapy* was defined as any form of corticosteroids irrespective of dosage or administration route. Hence, high-dose and pulsed therapies were included in this definition. *Second and third-line treatment* was defined as drugs other than corticosteroids, IVIG and Anti-D. *Relevant co-medication* was defined as drugs with known effects on hemostasis [anti-inflammatory drugs (NSAID), anticoagulants, and platelet antagonists].

*Co-morbid conditions* were defined as one or more of the following conditions at initial registration: arterial hypertension, diabetes mellitus, gastrointestinal disease, thyroid disease, cancer, alcohol abuse, cardiovascular disease, rheumatoid arthritis (RA), psoriasis, systemic lupus erythematosus, recent major general surgery, acute respiratory failure, chronic obstructive pulmonary disease, infectious disease, obesity, recent knee or hip replacement surgery ( $<1$  year), and splenomegaly.

*Patients lost to FU* at a specific visit were defined as patients who missed the relevant visit and all following visits, including those who have been discharged because of improvement of thrombocytopenia.

## Results

In total, 3780 evaluable patients with primary ITP were included between May 2004 and November 2015 (Supporting Information Figure S1A). Data were provided by 84 investigators of 74 participating sites in 31 countries. The 10 most active centers are listed according to total patient number: China, Argentina, United Kingdom, Egypt, Israel, Italy, and Germany and together registered 2101 patients (56%). Number of countries, institutions, and patients registered in the PARC-Registry are demonstrated in Table S1 (Supporting Information). FU information was available for the 6-, 12-, and 24-month evaluations in 68%, 51%, and 33% of children and 79%, 66%, and 49% of adults, respectively (Supporting Information Figure S1B).

### *Initial patient characteristics*

Data at the time of first presentation included 3360 children (89%) and 420 adults (11%). The adult subgroups consist of 250 young adults, mean age 24.2 years (SD 7.3), 101 midlife adults, mean age 50.2 years (SD 5.4), and 69 seniors, mean age 60.8 (SD 7.2). The age distribution of young adults,

midlife adults, and seniors at the 12-month visit was similar to that at baseline. The male:female ratio was in favor of male patients in children (1.09:1) and female patients in adults (0.54:1). Mean age of all children was  $5.2 \pm 4.1$  years and that of adults was  $38 \pm 19$  years.

“Relevant co-medication” was reported in 10.7% (45) of adults and in 2% (68) of children. However, young adults showed a low relevant co-medication rate (3.6%) similar to that of children compared with midlife adults (10.9%) and seniors (36.2%). Anti-inflammatory drug use only (e.g., NSAIDs) was reported in 60% of adults and 97% of children in whom relevant co-medication was reported. Co-morbidities were reported in 360 children, 32 young adults, 42 midlife adults, and 55 seniors (10.7%, 12.8%, 41.6%, and 79.7%, respectively).

### ***Lost to FU***

Lost to FU was significantly higher in patients achieving remission of ITP. At 6 and 12 months, remission rates in children subsequently lost to FU were 87% and 82%, respectively (chi-square test comparing remission state of patients with and without FU,  $p < 0.001$  at both time points). In adults, remission rates were 64% ( $p = 0.008$ ) and 56% ( $p = 0.15$ ), respectively. Among all patients with persistent ITP at 6 months, FU information at 12 and/or 24 months was provided for 90% of children and adults. Comparison of the initial characteristics between patients with FU data and patients lost to FU at 6 months found that children lost to FU had a lower age, higher initial mean platelet count, lesser initial bleeding, and lesser initial drug treatment (Table 1).

### ***Natural history: remission and ongoing disease***

The characteristics of patients in remission and with ongoing disease at 12 months are shown in Table 2 and mean platelet counts at all FU are depicted in Figure 1A. Patients in remission at 6, 12, and 24 months consisted of 70%, 71%, and 71% of children and 45%, 49%, and 56% of adults, respectively. Among the patients with persistent ITP, 212/592 (36%) children and 42/155 (27%) adults achieved remission at 12 months. Late remission at 24 months was reported in 83/298 (28%) and 26/87 (30%) adults. The cumulative incidence of remission was significantly different between children and adults ( $p < 0.001$ ) and is demonstrated in Figure 2. For this analysis, patients achieving remission at 6 and/or 12 months and consequently lost to FU were presumed to be still in remission at the 24-month FU. In children, mean age of patients with late remission at 12 and 24 months was higher ( $6.9 \pm 4.7$  years) than that of children with reported early remission at 6 months ( $4.8 \pm 4$  years) ( $p < 0.001$ ). Children with persistent ITP had a mean age of  $7.2 \pm 4.6$  years. Adults with early remission at the 6-month FU had a mean age of  $37.9 \pm 18.5$  years and those with a late remission at 12 and 24 months had a mean age of  $40.4 \pm 20.4$  years, which was not significant ( $p = 0.45$ ). Mean platelet count in patients with ongoing ITP was very similar in children and adults at the 12-month FU:  $46 \pm 29 \times 10^9/L$  and  $51 \pm 26 \times 10^9/L$ , respectively. Children in remission showed a higher platelet count at all FU examinations compared with adults (Figure 1A).

### ***Bleeding manifestations***

Approximately 37% and 36% of children diagnosed with chronic ITP reported no bleeding at 12 and 24 months, respectively. A higher percent of adults with chronic ITP had no bleeding manifestations (69% and 64% at 12 and 24 months, respectively) ( $p < 0.001$  at both time points). Children and adults achieving remission showed very similar percentages of non-bleeders at all reported FU examinations (e.g. Table 2).

The bleeding sites showed similarities in children and adults at all FU examinations (Supporting Information Table S2). Cutaneous bleeding, oral cavity bleeding, and epistaxis were the main bleeding sites. No major difference in bleeding sites was found between patients achieving remission and patients with chronic ITP. Occurrence of menorrhagia was similar in adults (16–50 years) and adolescents (13–16 years) in patients with ongoing ITP at 6 months (12.2% and 13.8%, respectively) and 12 months (7.8% and 4.9%, respectively). Information about actual numbers of bleeding events and their severity was not recorded. Mean platelet count in bleeders with chronic ITP (at the 12-month FU) was  $36 \pm 26 \times 10^9/L$  in children and  $40 \pm 25 \times 10^9/L$  in adults and in non-bleeders,  $63 \pm 25 \times 10^9/L$  and  $56 \pm 25 \times 10^9/L$ , respectively.

During the overall study period, intracranial hemorrhage (ICH) was reported in 20 children (0.6%) and seven adults (1.7%). Characteristics of patients with ICH are shown in Table S3 (Supporting Information).

Co-morbidities did not appear to affect bleeding in children or adults; approximately 69% and 66% of children and 44% and 43% of adults with and without co-morbidities with persistent ITP at 6 months reported bleeding, respectively. This was also observed in adults on relevant co-medication; only 22% of adults diagnosed with chronic ITP and taking relevant co-medication reported a bleeding event compared with 32% of those without co-medication. The group of children on relevant co-medication was too small for a detailed analysis.

### ***Management***

Platelet-enhancing drug treatment was reported at the 6-month FU (initial treatment not included), 12- and 24-month FU in 30%, 19% and 19% of children and in 59%, 40% and 33% of adults, respectively. However, for patients with ongoing ITP, treatment did not differ between children and adults (58%, 46%, and 47%; and 58%, 52%, and 40% at the three FU examinations, respectively). Women with ongoing disease were more often treated than men (Table 2). The platelet counts of treated and untreated patients with chronic ITP are shown in Figure 1B.

### ***First-line treatment (corticosteroids and IVIG)***

Corticosteroids were prescribed in 19% of children and 49% of adults during the first 6 months of the disease (initial treatment excluded). Corticosteroid use decreased in both children and adults over time,



with 12% and 11% of children and 33% and 21% of adults receiving corticosteroids at 12 and 24 months, respectively. However, the proportion of patients receiving corticosteroids in the group of patients requiring treatment remained high at all three FU examinations (adults, 83%, 81%, and 65%; and children, 65%, 63%, and 56%, respectively). Immunoglobulin (IVIG and anti-D) use was higher in children than in adults at all three FU examinations (e.g. Table 2).

### ***Second (third)-line treatment***

Second (third)-line drug treatment was reported in 38%, 47%, and 44% of treated children and 67%, 74%, and 72% of adults at 6-, 12-, and 24-month FU, respectively. The modality of treatment was not analyzed for this report. Splenectomy was performed in 4 children and 23 adults within the first 6 months (0.2% and 7.1% of children and adults). In 2/4 children, the reason for performing splenectomy was not obvious in the questionnaire. Splenectomy was performed in 13 (0.8%) and 13 (1.2%) children and in 14 (5.2%) and 8 (4.1%) adults during 6–12 months and 12–24 months, respectively. The female:male ratio of splenectomized patients was in favor of females in adults (67%) and also in children to a lesser extent (57%). Between May 2004 and January 2008, 35 splenectomies (0.8 total cases/month; adults, 0.5/month; children, 0.3/month) were performed; between 2008 and November 2015 39 splenectomies were performed (0.4 total cases/month; adults, 0.2/month; children, 0.2/month). Remission rate after splenectomy (at 6 or 12 months) was 54% in children and 70% in adults at the next FU, with no difference between the two FU times. In 4 children (13%) and 6 adults (14%), the remission state was unknown.

### **Discussion**

Comparative clinical studies of pediatric and adult ITP are rare and based on retrospective data.<sup>23,24</sup> PARC-ITP represents the first prospective observational cohort of children and adults with ITP and allows direct comparison of children and adults.

Differences between pediatric and adult ITP have been traditionally emphasized<sup>6</sup> and appear to be opinion-based rather than evidence-based.<sup>7-10</sup> Incongruity of definitions and lack of comparative data might have further contributed to the separation of childhood and adulthood ITP.<sup>25</sup> In most textbooks,<sup>26,27</sup> pediatric ITP is described as an acute and profound but self-limiting thrombocytopenia following a viral infection, with a low life-threatening bleeding risk. In contrast, adult ITP is described as a chronic disease with an insidious onset and a moderate thrombocytopenia, sometimes detected as an incidental thrombocytopenia, a high bleeding risk for patients with a platelet count  $<30 \times 10^9/L$  (40), and increased morbidity and mortality, particularly in patients aged  $>60$  years.<sup>11,25,28,29</sup> Current concepts of pediatric and adult ITP resulted in treatment protocols and practice guidelines with clinically relevant differences between these groups.<sup>7-10</sup>

PARC-ITP first data analysis of children and adults with newly diagnosed ITP revealed surprising similarities in presenting platelet count, likelihood of overall bleeding when platelets were  $<20 \times$

$10^9/L$ , and percentage of patients who remained untreated in both populations.<sup>12</sup> Patients differed with regard to co-morbidities and initial treatment modality. Pediatric and adult ITP seem to share more common clinical and laboratory aspects than previously presumed. This report is an analysis of FU data and supports the hypothesis of common aspects among children and adults. Similarities were found in many unexpected areas of ITP regarding natural history, including late remission rate at 12 and 24 months, reported bleeding sites, platelet count in bleeders, and need to treat patients with persistent or chronic ITP. Differences were confirmed for the overall remission rate and treatment modalities. Unexpected differences were found regarding the percentage of non-bleeders. Age group were arbitrary chosen. The age of the pediatric cohort corresponds to data previously reported in the literature,<sup>30</sup> the adult cohort was slightly younger than that reported e.g. by Abrahamson and coworkers<sup>31 32</sup>, the difference here could be explained based on our definition of adults aged >16 years.

### **Remission**

Remission rate in adults (45% at 6-month FU) was higher than expected<sup>6,7</sup>. In adults, we could not differentiate patients in remission still receiving ITP treatment from those with sustained remission after discontinuing treatment. In children, remission rate was comparable to earlier reports<sup>33</sup>, so as differences in age between patients with early remission (until 6 months) and those with persistent or chronic disease ( $4.9 \pm 4$  years,  $7.2 \pm 4.6$  years, and  $7.4 \pm 4.5$  years, respectively).<sup>33</sup> Children with late remission (at 12 or 24 months) were older ( $6.9 \pm 4.7$  years) than patients with early remission in our cohort.

Late remission at 12- and 24-month FU examinations was very similar in children (36% and 28% of patients with ongoing ITP at the previous FU) and adults (28% and 30%). Late remission data in adults are scarce,<sup>34</sup> and this is neglected in some publications involving therapeutic recommendations, particularly the time point of splenectomy.<sup>8,10</sup> Sailer et al<sup>34</sup> showed that between 6 months and 3 years after diagnosis, adults with severe ITP ( $<20 \times 10^9/L$  platelets) had a 0.5% chance per month of obtaining complete remission during treatment with or without low-dose steroids and reported a 61% cumulative probability of complete remission in not splenectomized patients. In children, ICIS reported a late remission rate of 16%–25% between 6 and 12 months<sup>33,35</sup> and 24% between 12 and 24 months;<sup>24</sup> however, the definition of remission was a platelet count  $>150 \times 10^9/L$ , which may explain the small difference with our study.

### **Bleeding**

Definition, assessment, and grading of bleeding in patients with ITP has been developed with consensus conferences<sup>20</sup> and use of bleeding scores.<sup>36,37</sup> Unfortunately, there is no consensus on which bleeding assessment tool should be used in a routine clinical setting and at which time point or in which clinical situation bleeding should be assessed. Bleeding assessment is further hindered by the lack of clear inclusion criteria of study populations.<sup>28,38-41</sup> We focused on the analysis of non-bleeders

because the definition is clearer. However, diagnosing a “non-bleeder” requires a complete clinical assessment. More adults with persistent or chronic ITP exhibited a non-bleeding phenotype (e.g., 69% at the 12-month FU) than children (37%), despite similar platelet counts in both. However, bleeding sites were similar among them, particularly at 24 months of FU, with the same proportions of mucocutaneous bleeding and hematuria in the two age groups. In a systematic review of the literature, Neunert et al. revealed more severe bleeding events in children than in adults, excluding ICH.<sup>41</sup> This information together with our data contradicts the widely accepted paradigm that adults have a higher bleeding complication risk. Nevertheless, according to literature, elderly patients (>60 years) still have an increased bleeding risk.<sup>11,28,29,42</sup> The number of elderly patients in PARC-ITP (69) was too small to be analyzed separately. Overall ICH incidence in our cohort was 0.6% in children and 1.7% in adults, which is similar to the findings of a recent systematic review of severe bleeding of 0.4% and 1.4%, respectively, as well as the results of other reports.<sup>25,41,43,44</sup> ICH was reported during initial diagnosis of ITP in 14/20 (70%) of children and 7/7 (100%) of adults, corresponding to the results of a study of 40 children revealing that ICH occurred in 18 (45%) patients within the first 7 days.<sup>43</sup>

### **Treatment**

Drug treatment in children and adults with ongoing ITP was similar in both age groups. Indeed, 58% of patients with persistent ITP (at 6 months) received platelet-enhancing treatment independently of age group, with a small decrease over time in both groups. Therefore, children with ongoing disease are not treated less frequently than adults with platelet-enhancing drugs, despite the recommendation of a watch and wait strategy in pediatric patients with no or mild bleeding.<sup>9,10</sup> A possible bias could have been that children with active ITP were treated because of bleeding (“on-demand therapy”) compared with a certain percentage of adults who probably received platelet-enhancing drugs as prophylaxis. However, the treatment rationale was not registered. Differences were seen in the choice of treatment modality. In adults, steroids were the preferred therapy at 6- and 12-month FU (84% and 81% of patients under treatment, respectively) and second (third)-line drugs at 24-month FU (72%). In children, steroids (65%, 63%, and 56%) and immunoglobulins (67%, 55%, and 55%) were similarly represented at all FU examinations. A decline of steroid use was seen at FU for all patients probably because of cumulative toxicity and poor drug acceptance. The percentage of children and adults using second (third)-line therapy was relatively stable over time.

The splenectomy rate was relatively low with a cumulative splenectomy rate until the 24-month FU of 30/3360 (0.9%) children and 44/420 (11%) adults. The monthly splenectomy rate decreased after 2008 in adults and, to a lesser extent, in children. For decades, splenectomy was the treatment of choice for patients with chronic ITP in case of corticosteroid failure;<sup>45,46</sup> however, recent data suggest that <25% of patients with ITP undergo splenectomy, mostly with a delay from second- to third-line treatment.<sup>47</sup> The reason for this decline are probably various, medical professionals recommend increasingly to delay splenectomy but also patients do not accept uncritically the procedure. The optimal role of

splenectomy in chronic ITP treatment in the current era of TPO-RAs still has to be determined. Of concern was early splenectomy at the 6-month FU in 4 children and 23 adults. This is not in accordance with current guidelines.<sup>9,10</sup>

### **Limitations**

PARC-ITP is an international registry based on voluntary participation of investigators. Limitations include different data source levels including different countries, institutions, and investigators; voluntary basis of data registration; unbalanced number of children and adults; and high percentage of patients with loss to FU who were not further treated in a given institution. However among all patients with persistent ITP at 6 months, FU information at 12 and/or 24 months was provided for 90% of children and adults. In addition, some aspects of the registry questionnaire are defined according to a specific time point (e.g., platelet count) and others according to a time interval (e.g., bleeding and therapy). To better characterize patients lost to FU, an analysis was conducted to evaluate the effect of this bias. Demographic data and clinical characteristics (including initial platelet count, bleeders, and initial therapeutic approach) differed, particularly in children lost to FU at 6 months compared with those who were not lost. For the group of lost to FU at 12 and 24 months, we found a higher percentage of patients in remission at the previous FU in children and adults. In this analysis, we included all patients independently, even if FU data were missing at some time points, with the goal to describe the registered patients as a whole without artificially selecting a subpopulation of ITP.

Following this strategy, we used statistical evaluation for selected and clearly defined issues only.

In conclusion, understanding differences and similarities among different age groups with ITP during FU may be valuable in characterizing study populations and in better defining inclusion criteria for trials and further individualizing diagnosis and management. Future studies will investigate criteria to better define age groups.

**Acknowledgments:** *We thank all patients who continue to participate in the PARC-ITP Registry and the staff of the participating institutions. We thank all investigators of the PARC-ITP Registry who supported ICIS and generously provided us with their patient data. A complete membership list appears in “Appendix”. We are indebted to Verena Stahel, Caroline Asal Martin, and Monika Imbach for data administration and secretarial work.*

*The registry is supported in part by grants from the ITP Foundation, Darien, CT, USA; Eduard Waeffler-Ludwig-Stiftung, Basel, Switzerland; Stiftung zur Förderung medizinischer und biologischer Forschung, Basel, Switzerland; and University Children’s Hospital Basel, University of Basel, Switzerland.*

*We thank Enago for editorial assistance.*

**Authorship Contributions:** A.S., A.H., and T.K. analyzed and interpreted data, and wrote the paper; A.H., M.Chitlur, H.D, M.E., G.E., J.G., S.H., C.R., F.R., M.R., H.T., T.U., and R.W. recruited patients and collected data; A.S., A.H., M.Chitlur, M.Coslovsky, P.I., H.D, M.E., G.E., J.G., S.H., C.R., F.R., M.R., H.T., T.U., R.W., and T.K. reviewed the manuscript and provided editorial input; M.Coslovsky, and A.S. performed statistical analysis; T.K., P.I., and A.S. designed and conducted the Registry, and all authors approved the final manuscript.

**Conflict of Interest Disclosures:** M.Chitlur, M.Coslovsky, P.I., H.D., M.E., G.E., S.H., C.R., M.R., H.T., T.U., and R.W. declare no competing financial interests. A.S. advisory board for Novartis and received research funds of Amgen; A.H. consultancy for Novartis; J.G. advisory board for ITP Support Association, Novartis, GSK, Amgen; F.R. Board member for Amgen, Argenx, Novartis; T.K. advisory board UCB biosciences and received research funds of Amgen.

**Correspondence:** Alexandra Schifferli, Department of Hematology/Oncology, University Children’s Hospital Basel, 4056 Basel, Switzerland; e-mail: [Alexandra.schifferli@ukbb.ch](mailto:Alexandra.schifferli@ukbb.ch).

**Appendix:** Members of the ICIS

## Reference

1. Cooper N, Bussel J. The pathogenesis of immune thrombocytopaenic purpura. *Br J Haematol*. 2006;133(4):364-374.
2. Johnsen J. Pathogenesis in immune thrombocytopenia: new insights. *Hematology Am Soc Hematol Educ Program*. 2012;2012:306-312.
3. Shulman NR, Marder VJ, Weinrach RS. Similarities between known antiplatelet antibodies and the factor responsible for thrombocytopenia in idiopathic purpura. Physiologic, serologic and isotopic studies. *Ann N Y Acad Sci*. 1965;124(2):499-542.
4. Khodadi E, Asnafi AA, Shahrabi S, Shahjehani M, Saki N. Bone marrow niche in immune thrombocytopenia: a focus on megakaryopoiesis. *Ann Hematol*. 2016;95(11):1765-1776.
5. Olsson B, Andersson PO, Jernås M, et al. T-cell mediated cytotoxicity toward platelets in chronic idiopathic thrombocytopenic purpura. *Nat Med*. 2003;9(9):1123-1124.
6. Cines DB, Blanchette VS. Immune thrombocytopenic purpura. *N Engl J Med*. 2002;346(13):995-1008.
7. George JN, Woolf SH, Raskob GE, et al. Idiopathic thrombocytopenic purpura: a practice guideline developed by explicit methods for The American Society of Hematology. *Blood*. 1996;88(1):3-40.
8. British Committee for Standards in Haematology General Haematology Task Force. Guidelines for the investigation and management of idiopathic thrombocytopenic purpura in adults, children and in pregnancy. *Br J Haematol*. 2003;120(4):574-596.
9. Provan D, Stasi R, Newland AC, et al. International consensus report on the investigation and management of primary immune thrombocytopenia. *Blood*. 2010;115(2):168-186.
10. Neunert C, Lim W, Crowther M, Cohen A, Solberg L, Jr, Crowther MA. American Society of Hematology. The American Society of Hematology 2011 evidence-based practice guideline for immune thrombocytopenia. *Blood*. 2011;117(16):4190-4207.
11. Moulis G, Palmaro A, Montastruc JL, Godeau B, Lapeyre-Mestre M, Sailler L. Epidemiology of incident immune thrombocytopenia: a nationwide population-based study in France. *Blood*. 2014;124(22):3308-3315.
12. Kühne T, Berchtold W, Michaels LA, et al. Newly diagnosed immune thrombocytopenia in children and adults: a comparative prospective observational registry of the Intercontinental Cooperative Immune Thrombocytopenia Study Group. Intercontinental Cooperative ITP Study Group. *Haematologica*. 2011;96(12):1831-1837.
13. Heitink-Pollé KM, Nijsten J, Boonacker CW, de Haas M, Bruin MC. Clinical and laboratory predictors of chronic immune thrombocytopenia in children: a systematic review and meta-analysis. *Blood*. 2014;124(22):3295-3307.

14. Grimaldi-Bensouda L, Nordon C, Michel M, et al. Group for the PGRx-ITP Study. Immune thrombocytopenia in adults: a prospective cohort study of clinical features and predictors of outcome. *Haematologica*. 2016;101(9):1039-1045.
15. Intercontinental Childhood ITP Study Group (ICIS): State-of-the-Art Expert Meeting on ITP, September 2003—Buergenstock, Switzerland. *J Pediatric Hematol Oncol*. 2003;25:S1-84.
16. 2nd ICIS Expert Meeting 2006 on critical issues and future development of research in ITP. *Pediatr Blood Cancer*. 2006;47:649-745.
17. 3rd ICIS Expert Meeting in Basel, Switzerland, September 2009. *Ann Hematol*. 2010;89(Suppl).
18. 4th ICIS Expert Meeting in Montreux, Switzerland, September 2012. *Semin Hematol*. 2013;50(Suppl).
19. 5th ICIS Expert Meeting on Immunomodulation and Management in ITP and Other Autoimmune Disorders, September 2015—Flüeli-Ranft, Switzerland. *Semin Hematol*. 2016 (Suppl).
20. Rodeghiero F, Stasi R, Gernsheimer T, et al. Standardization of terminology, definitions and outcome criteria in immune thrombocytopenic purpura of adults and children: report from an international working group. *Blood*. 2009;113(11):2386-2393.
21. Kühne T. Update on the intercontinental cooperative ITP study group (ICIS) and on the pediatric and adult registry on chronic ITP (PARC ITP). *Pediatr Blood Cancer*. 2013;60(1):S15-S18.
22. R Development Core Team (2017). R: A language and environment for statistical computing. R Foundation for Statistical Computing, Vienna, Austria. URL <http://www.R-project.org>.
23. Saeidi S, Jaseb K, Asnafi AA, et al. Immune thrombocytopenic purpura in children and adults: a comparative retrospective study in IRAN. *Int J Hematol Oncol Stem Cell Res*. 2014;8(3):30-36.
24. Vianelli N, Valdrè L, Fiacchini M, et al. Long-term follow-up of idiopathic thrombocytopenic purpura in 310 patients. *Haematologica*. 2001;86(5):504-509.
25. Fogarty PF, Segal JB. The epidemiology of immune thrombocytopenic purpura. *Curr Opin Hematol*. 2007;14(5):515-519.
26. Kühne T. Immune Thrombocytopenia. *UNI-MED Verlag*. 2010.
27. Colman RW, Marder VJ, Clowes AW, George JN, Goldhaber SZ. Hemostasis and Thrombosis: Basic Principles and Clinical Practice, 5th ed. 2006.
28. Cohen YC, Djuibegovic B, Shamaï-Lubovitz O, Mozes B. The bleeding risk and natural history of idiopathic thrombocytopenic purpura in patients with persistent low platelet counts. *Arch Intern Med*. 2000;160(11):1630-1638.
29. Mahévas M, Michel M, Godeau B. How we manage immune thrombocytopenia in the elderly. *Br J Haematol*. 2016;173(6):844-856. doi: 10.1111/bjh.14067.
30. Sutor AH, Harms A, Kaufmehl K. Acute immune thrombocytopenia (ITP) in childhood: retrospective and prospective survey in Germany. *Sem Thromb Hemost*. 2001;27:253-267.
31. Abrahamson PE, Hall SA, Feudjo-Tepie M, Mitrani-Gold FS, Logie J. The incidence of idiopathic thrombocytopenic purpura among adults: a population-based study and literature review. *Eur J*

*Haematol.* 2009;83(2):83-89.

32. Deane S, Teuber SS, Gershwin ME. The geoepidemiology of immune thrombocytopenic purpura.

*Autoimmun Rev.* 2010;9(5):A342-A349.

33. Imbach P, Kühne T, Müller D, et al. Childhood ITP: 12 months follow-up data from the

prospective registry I of the Intercontinental Childhood ITP Study Group (ICIS). *Pediatr Blood Cancer.* 2006;46(3):351-356.

34. Sailer T, Lechner K, Panzer S, Kyrle PA, Pabinger I. The course of severe autoimmune thrombocytopenia in patients not undergoing splenectomy. *Haematologica.* 2006;91(8):1041-1045.

35. Neunert CE, Buchanan GR, Imbach P, et al. Intercontinental Cooperative ITP Study Group Registry II Participants. Bleeding manifestations and management of children with persistent and chronic immune thrombocytopenia: data from the Intercontinental Cooperative ITP Study Group (ICIS). *Blood.* 2013;121(22):4457-4462.

36. Rodeghiero F, Michel M, Gernsheimer T, et al. Standardization of bleeding assessment in immune thrombocytopenia: report from the International Working Group. *Blood.* 2013;121(14):2596-2606.

37. Kumar M, Dutta S, Bhattyacharyya M. Application of ITP-BAT bleeding score in clinical practice. *Int J Hematol.* 2015;101(2):207-208.

38. McMillan R, Durette C. Long-term outcomes in adults with chronic ITP after splenectomy failure. *Blood.* 2004;104(4):956-960.

39. Bizzoni L, Mazzucconi MG, Gentile M, et al. Idiopathic thrombocytopenic purpura (ITP) in the elderly: clinical course in 178 patients. *Eur J Haematol.* 2006;76:210-216.

40. Bourgeois E, Caulier MT, Delarozee C, et al. Long-term follow-up of chronic autoimmune thrombocytopenic purpura refractory to splenectomy: a prospective analysis. *Br J Haematol.* 2003;120:1079-1088.

41. Neunert C, Noroozi N, Norman G, et al. Severe bleeding events in adults and children with primary immune thrombocytopenia: a systematic review. *J Thromb Haemost.* 2015;13(3):457-464.

42. Michel M, Rauzy OB, Thoraval FR, et al. Characteristics and outcome of immune thrombocytopenia in elderly: results from a single center case-controlled study. *Am J Hematol.* 2011;86(12):980-984.

43. Psaila B, Petrovic A, Page LK, Menell J, Schonholz M, Bussel JB. Intracranial hemorrhage (ICH) in children with immune thrombocytopenia (ITP): study of 40 cases. *Blood.* 2009;114(23):4777-4783.

44. Butros LJ, Bussel JB. Intracranial hemorrhage in immune thrombocytopenic purpura: a retrospective analysis. *J Pediatr Hematol Oncol.* 2003;25(8):660-664.

45. Michele P, Lambert MD, Terry B, Gernsheimer MD. Clinical updates in adult immune thrombocytopenia (ITP). *Blood.* 2017;129(21):2829-2835.

46. George JN, Kojouri K, Perdue JJ, Vesely SK. Management of patients with chronic, refractory idiopathic thrombocytopenic purpura. *Semin Hematol.* 2000;37(3):290-298. Review.

47. Palandri F, Polverelli N, Sollazzo D, et al. Have splenectomy rate and main outcomes of



ITP changed after the introduction of new treatments? A monocentric study in the outpatient setting during 35 years. *Am J Hematol.* 2016;91(4):E267-E272.

Author Manuscript

## Figure Legends

### Figure 1. Platelet counts at FU.

- (A) Mean platelet counts in patients with ongoing ITP was similar in children and adults at all FU. Children in remission showed a higher platelet count at all FU examinations compared with adults.
- (B) Distribution of platelet count in patients with a chronic ITP at 12 month FU requiring or not requiring treatment.

### Figure 2. Cumulative incidence of remission.

The cumulative incidence of remission was significantly different between children and adults (log-rank test,  $p < 0.001$ ). For this analysis it was assumed that patients achieving remission at 6 or 12 months and consecutively lost to FU were still in remission at 24 months FU. It is of note that patients lost to FU at 12 and 24 months had a higher remission rate in the previous FU than patients with FU data.

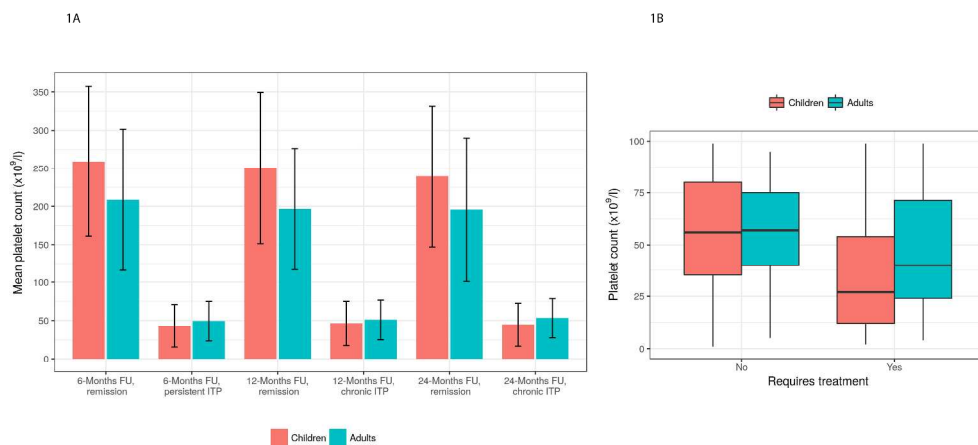


Figure1. Platelet counts at FU.

- (A) Mean platelet counts in patients with ongoing ITP was similar in children and adults at all FU. Children in remission showed a higher platelet count at all FU examinations compared with adults.
- (B) Distribution of platelet count in patients with a chronic ITP at 12 month FU requiring or not requiring treatment.

324x156mm (300 x 300 DPI)

Author M

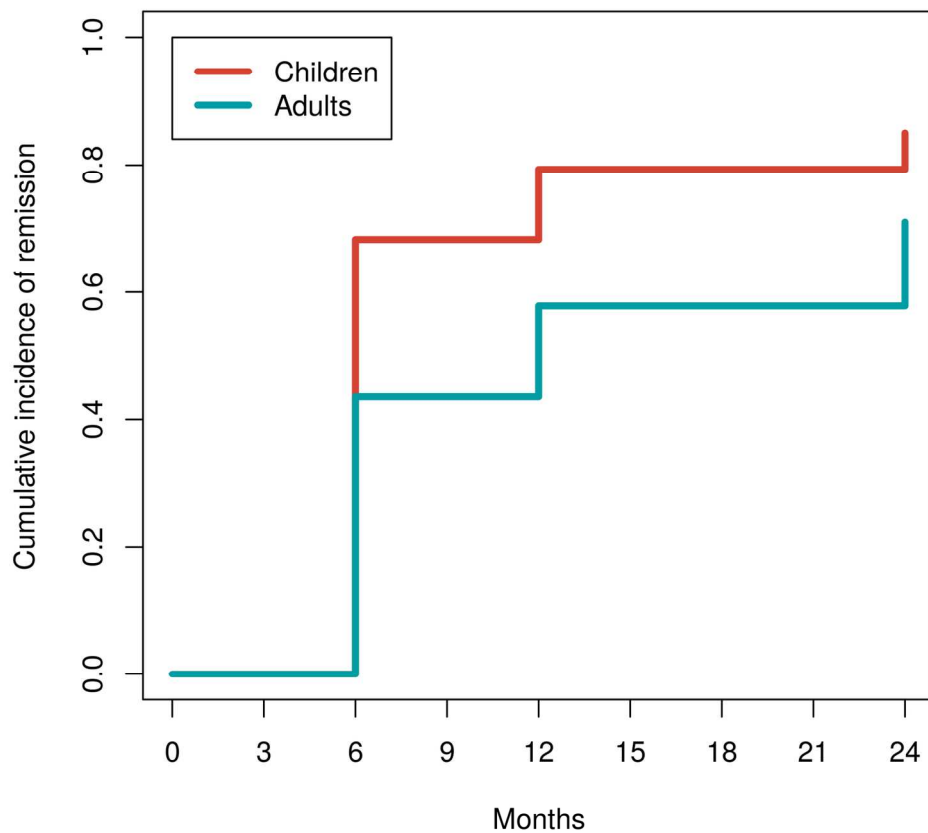


Figure 2. Cumulative incidence of remission.

The cumulative incidence of remission was significantly different between children and adults (log-rank test,  $p < 0.001$ ). For this analysis it was assumed that patients achieving remission at 6 or 12 months and consecutively lost to FU were still in remission at 24 months FU. It is of note that patients lost to FU at 12 and 24 months had a higher remission rate in the previous FU than patients with FU data.

149x149mm (300 x 300 DPI)

Au1

## Tables

**Table 1. Initial characteristics of patients with early lost to Follow-up (without 6 month Follow-up data) compared to patients with FU data**(% refers to the total number of patients, platelet count  $\times 10^9/l$ )

	With FU *	Lost to FU at 6 mo	p-value
<b>Total patients</b>			
Children	2317	1043	
Adults	333	87	
<b>Mean age (SD)/ Median (IQR)</b>			
Children	5.5 (4.3)/ 4.2 (2-8.5)	4.5 (3.7)/ 3.4 (1.6-6.6)	<0.001
Adults	38.6 (19.3)/ 34.3 (20.3-53)	35.4 (18.1)/ 31.1 (20-49.1)	0.19
<b>f/m (%)</b>			
Children female	1102(48)	507 (49)	0.57
Adults female	229 (69)	43 (49)	<0.001
<b>Mean platelet count, initial (SD)/ Median (IQR)</b>			
Children	17 (18)/ 11 (5-21)	25 (25)/ 16 (6-36)	<0.001
Adults	24 (24)/ 14 (5-36)	22 (21)/ 14 (5-35)	0.81
<b>No bleedings initial (%)</b>			
Children	160 (7)	289 (28)	<0.001
Adults	99 (30)	23 (26)	0.55
<b>Therapy initial yes (%)</b>			
Children	1703 (74)	628 (60)	<0.001
Adults	220 (66)	60 (69)	0.61

\*With FU: characterizes patients with Follow-up (FU) information at 12 and/or 24 months.

Autho

**Table 2. Follow-up data of patients with/without remission at 12 month.** Data of patients with known remission state only are demonstrated.

	All		Remission		Ongoing disease	
	<i>Children</i>	<i>Adult</i>	<i>Children</i>	<i>Adult</i>	<i>Children</i>	<i>Adult</i>
<b>Total patients (%)</b>	<b>1639</b>	<b>271</b>	<b>1160 (71)</b>	<b>133 (49)</b>	<b>479 (29)</b>	<b>138 (51)</b>
Female (% of total female)	776	189	521 (67)	96 (51)	255 (33)	93 (49)
Male	863	82	639 (74)	37 (45)	224 (26)	45 (55)
<b>Mean age (SD)</b>	<b>5.7 (4.4)</b>	<b>39.4 (19.5)</b>	<b>5 (4.1)</b>	<b>39.6 (19.5)</b>	<b>7.4(4.5)</b>	<b>39.2 (19.7)</b>
Female	6.2 (4.5)	38.3 (19.2)	5.3 (4.3)	38.2 (19.3)	7.9 (4.5)	38.5 (19.2)
Male	5.3 (4.2)	41.8 (20.2)	4.7 (4)	43.1 (19.8)	6.8 (4.4)	40.7 (20.6)
<b>No bleeding (%)†</b>	<b>1215 (74)</b>	<b>205 (76)</b>	<b>1039 (90)</b>	<b>110 (83)</b>	<b>176 (37)</b>	<b>95 (69)</b>
Female (% of total female)	560 (72)	137 (73)	463 (89)	79 (82)	97 (38)	58 (62)
Male	655 (76)	68 (83)	576 (90)	31 (84)	79 (35)	37 (82)
<b>Platelet count (SD) ‡</b>	<b>191 (126)</b>	<b>122 (94)</b>	<b>250 (99)</b>	<b>197 (80)</b>	<b>46 (29)</b>	<b>51 (26)</b>
Female						
Male	183 (125)	123 (91)	250 (97)	193 (78)	46 (28)	52 (26)
	198 (126)	120 (100)	251 (101)	207 (86)	46 (30)	49 (25)
<b>Platelet enhancing treatment (%)†</b>	<b>307 (19)</b>	<b>109 (40)</b>	<b>86 (7.4)</b>	<b>37 (28)</b>	<b>221 (46)</b>	<b>72 (52)</b>
Female (% of total female)	170 (22)	82 (43)	45 (8.6)	28 (29)	125 (49)	54 (58)
Male	137 (16)	27 (33)	41 (6.4)	9 (24)	96 (43)	18 (40)

(% refers to the total number of patients if not other mentioned, platelet count x109/l)

\* Relevant comedication: drugs with known effects on hemostasis (anti-inflammatory drugs, anticoagulants, platelet antagonist)

† in the period of time between 6 and 12 months

‡ at 12 month

§ Second line treatment: other drugs than steroids, Anti-D and IVIG