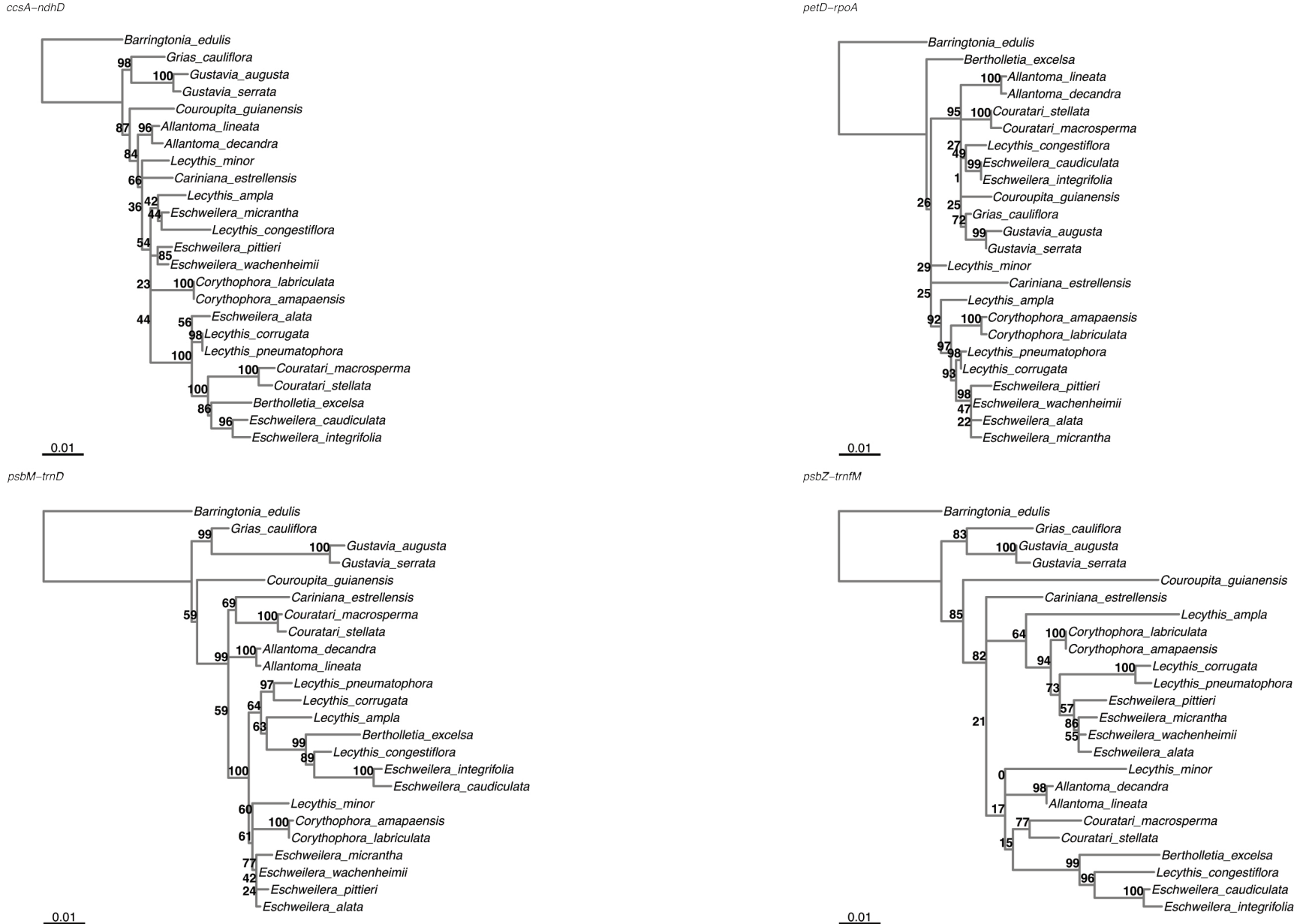
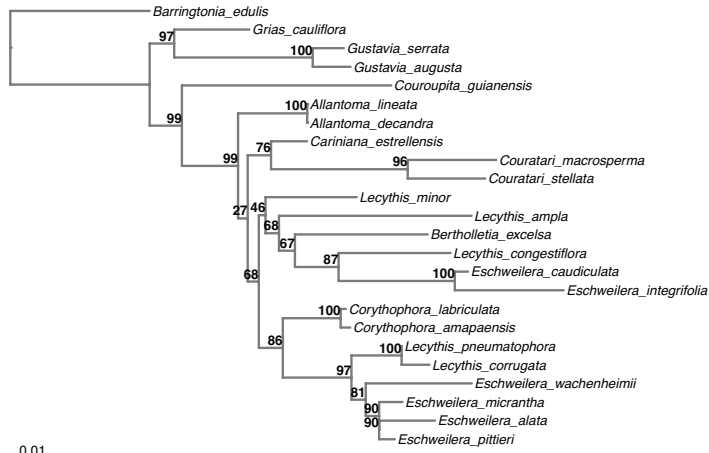


Appendix S1. Phylograms obtained from single and combined markers with high nucleotide diversity. Numbers at nodes indicate bootstrap support.

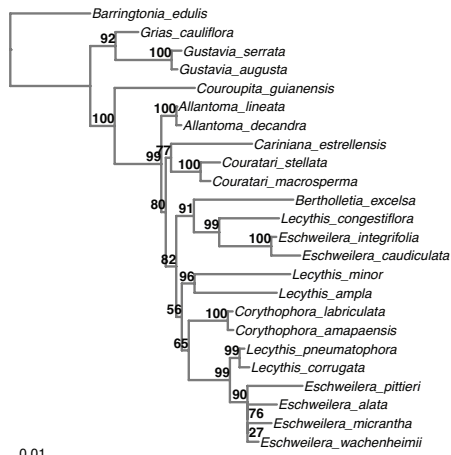


rpl16-rps3



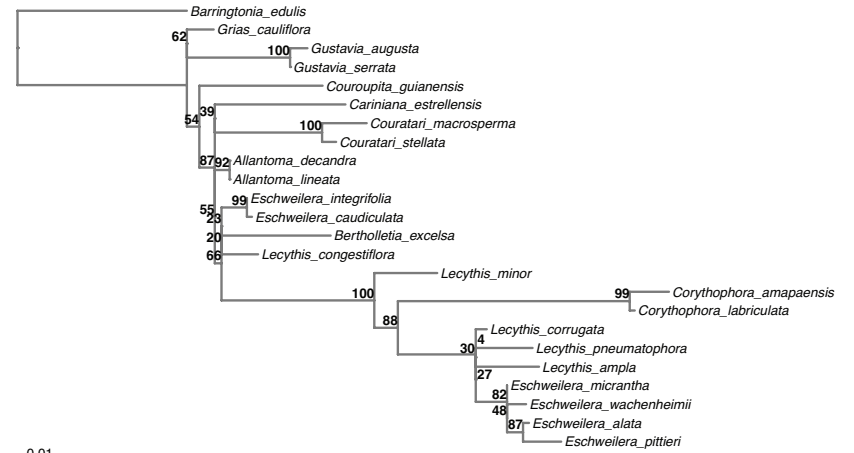
0.01

trnG-psaB



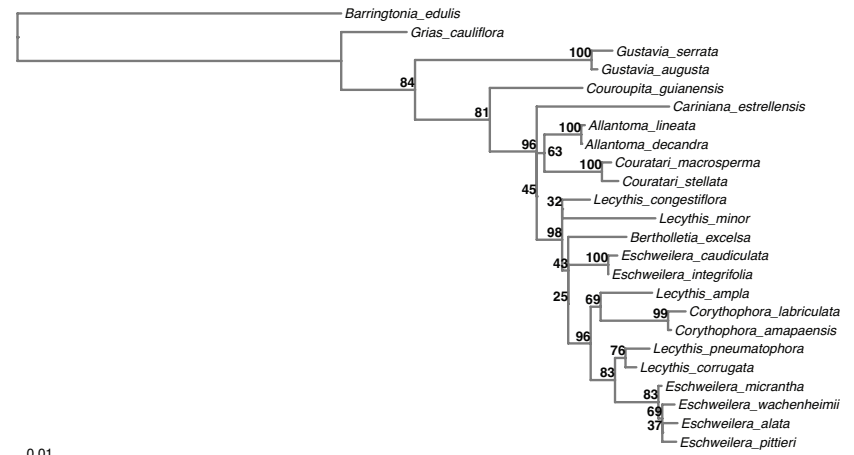
0.01

trnE-trnT



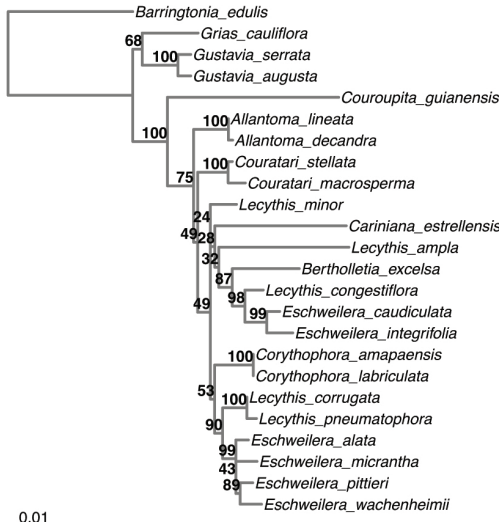
0.01

trnT-psbD



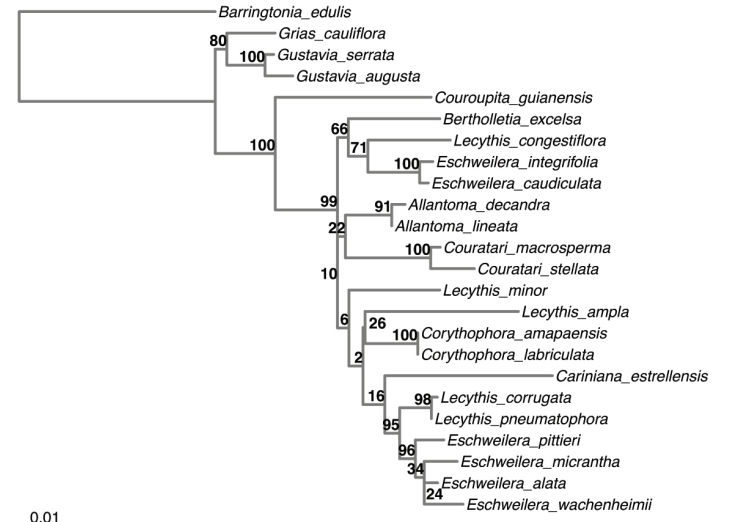
0.01

ycf1(1)



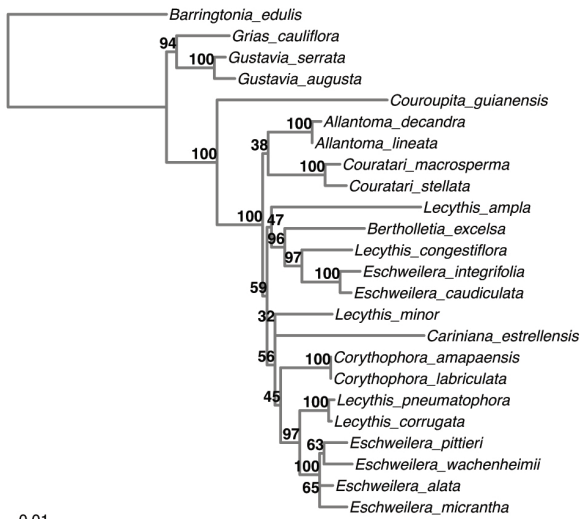
0.01

ycf1(2)



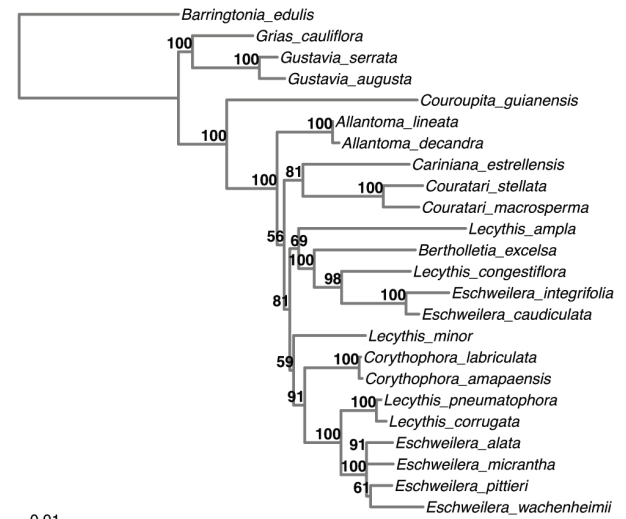
0.01

ycf1



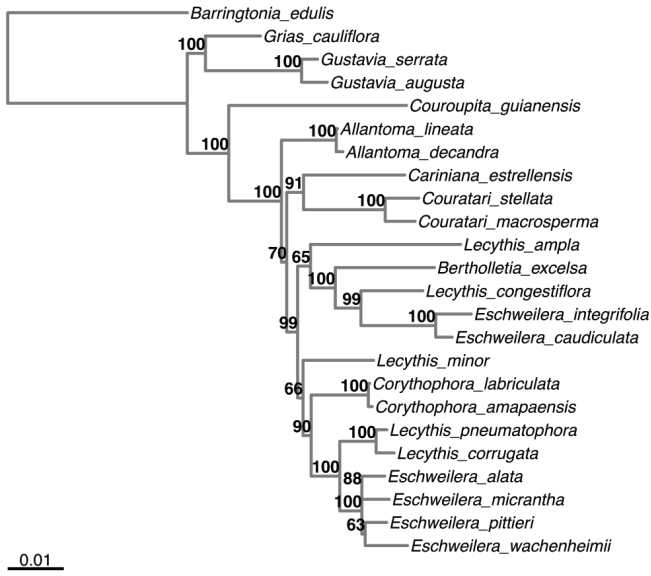
0.01

ycf1.rpl16-rps3

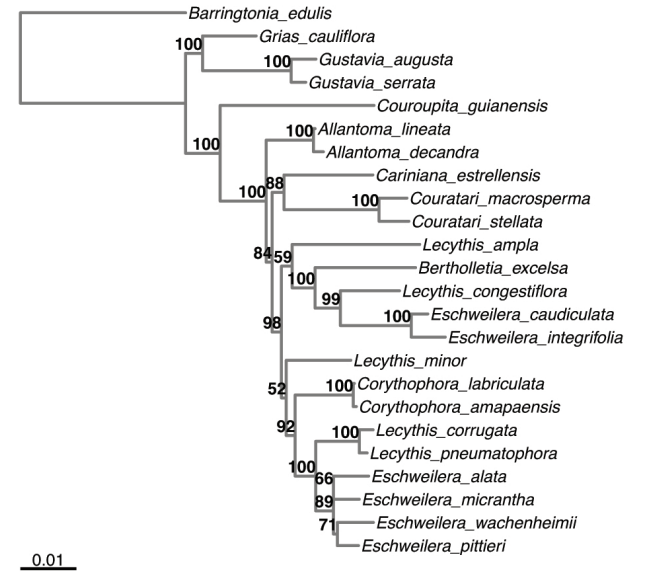


0.01

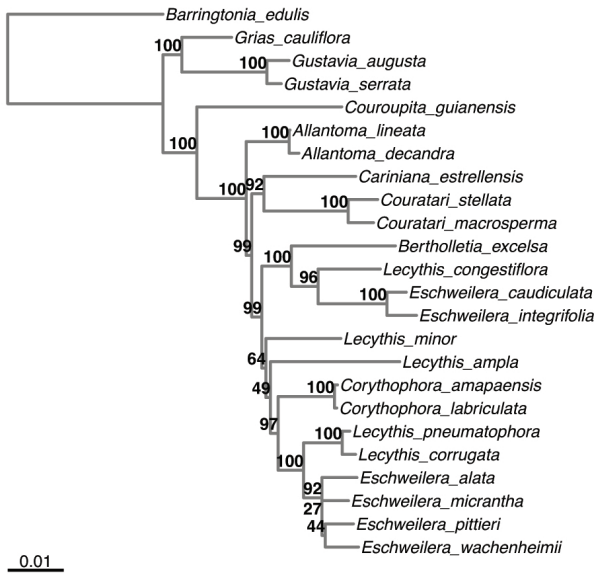
ycf1\_rpl16-rps3\_psbM-trnD



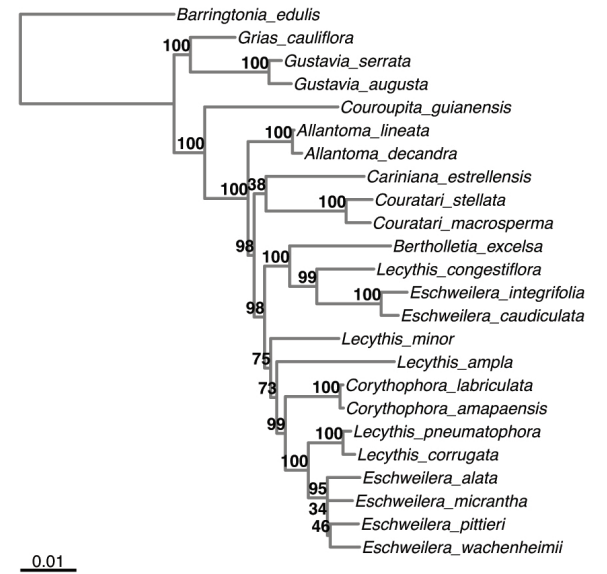
ycf1\_rpl16-rps3\_psbM-trnD\_ccsA-ndhD



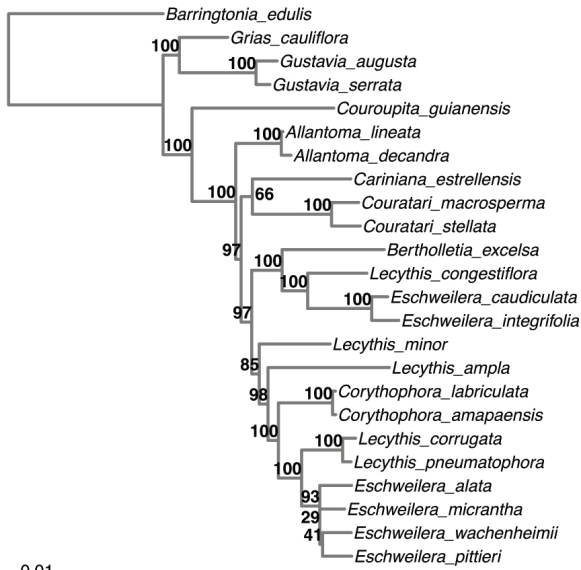
ycf1\_rpl16-rps3\_psbM-trnD\_ccsA-ndhD\_trnG-psaB



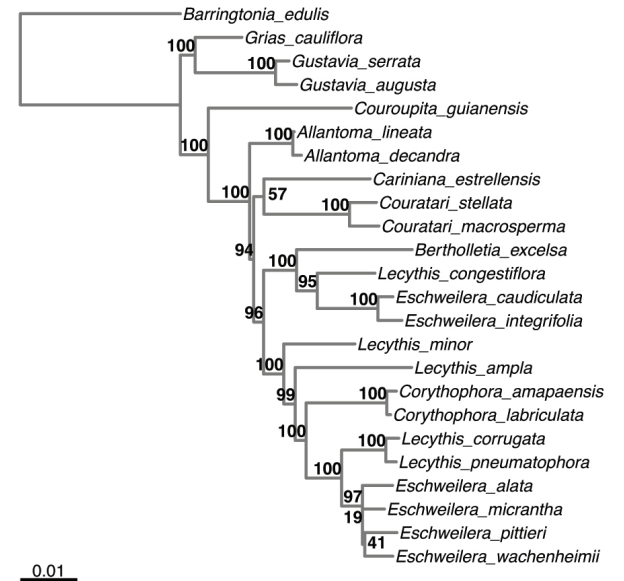
ycf1\_rpl16-rps3\_psbM-trnD\_ccsA-ndhD\_trnG-psaB\_petD-rpoA



ycf1,rpl16-rps3,psbM-trnD,ccsA-ndhD,trnG-psaB,petD-rpoA,psbZ-trnFM



ycf1,rpl16-rps3,psbM-trnD,ccsA-ndhD,trnG-psaB,petD-rpoA,psbZ-trnFM, trnE-trnT



ycf1,rpl16-rps3,psbM-trnD,ccsA-ndhD,trnG-psaB,petD-rpoA,psbZ-trnFM, trnE-trnT, trnT-psbD

