

Patient Reported Outcomes in Cirrhosis: A Scoping Review of the Literature

Elliot B. Tapper (1), Fasiha Kanwal (2-4), Sumeet K. Asrani (5), Chanda Ho (6), Nadia Ovchinsky (7), John Poterucha (8), Avegail Flores (9), Judith E. Smith (10), Victor Ankoma-Sey (11), Bruce Luxon (12), Michael Volk (13).

1. Division of Gastroenterology and Hepatology, University of Michigan
2. Section of Gastroenterology and Hepatology, Department of Medicine, Baylor College of Medicine, Houston, TX, USA.
3. Center for Innovations in Quality, Effectiveness and Safety, Michael E. DeBakey Veterans Affairs Medical Center, Houston, TX, USA.
4. Section of Health Services Research, Department of Medicine, Baylor College of Medicine, Houston, TX, USA
5. Division of Hepatology, Baylor University Medical Center, Dallas, TX
6. Division of Gastroenterology, California Pacific Medical Center
7. Division of Pediatric Gastroenterology, Children's Hospital at Montefiore, Bronx, NY
8. Division of Gastroenterology, Mayo School of Medicine
9. Division of Gastroenterology, Washington University School of Medicine, St. Louis, MO
10. Taubman Health Sciences Library, University of Michigan
11. Division of Gastroenterology, Houston Methodist
12. Department of Medicine, Georgetown University
13. Division of Gastroenterology and Transplantation Institute, Loma Linda University, Loma Linda CA

Keywords: Quality of life, Ascites, Hepatic Encephalopathy, Liver Disease, Muscle Cramps

Word count: 2,407

Emails: Tapper (etapper@umich.edu), Asrani (sumeet.asrani@bswhealth.org), Ho (hocc@sutterhealth.org), Kanwal (kanwal@bcm.edu), Volk (mvolk@llu.edu), Flores (avegailf@gmail.com), Poterucha (poterucha.john@mayo.edu), Ovchinsky (novchinsky@yahoo.com), Luxon (bruce.a.luxon@gunet.georgetown.edu), Ankoma-Sey (akobot@aol.com), Smith (judsmith@umich.edu)

Corresponding author:

Michael L. Volk, MD, MSc
Division of Gastroenterology/Hepatology and Transplantation Institute
Loma Linda University Health, Loma Linda CA
mvolk@llu.edu

Disclosure:

1. Roles
 - a. Concept: AASLD Practice Metrics Committee
 - b. Analysis: AASLD Practice Metrics Committee
 - c. Data acquisition: AASLD Practice Metrics Committee

This is the author manuscript accepted for publication and has undergone full peer review but has not been through the copyediting, typesetting, pagination and proofreading process, which may lead to differences between this version and the [Version of record](#). Please cite this article as [doi:10.1002/hep.29756](https://doi.org/10.1002/hep.29756).

- d. Writing: Tapper, Kanwal, Volk
- e. Critical revision: AASLD Practice Metrics Committee
2. Conflicts of interest: No author has any conflicts of interest to declare
3. Funding: Elliot Tapper receives funding from the National Institutes of Health through the Michigan Institute for Clinical and Health Research (KL2TR002241).

Abbreviations:

health related quality of life (HRQOL)

patient reported outcomes (PROs)

Author Manuscript

Abstract

Patients with cirrhosis seek improvement in their symptoms, functioning, quality of life, and satisfaction with the care they receive. However, these patient reported outcomes (PROs) are not routinely measured for clinical care, research, or quality improvement. The members of the American Association for the Study of Liver Disease Practice Metrics Committee, charged with developing quality indicators for clinical practice, performed a scoping review of PROs in cirrhosis. The aim is to synthesize a comprehensive set of PROs for inclusion into a standard patient-centered outcome set. We searched Medline, EMBASE, CINAHL, PsycINFO, and the Cochrane Trial Library since inception, with final searches run between 4/20/2017-6/1/2017. Studies were included if they reported the construction and/or validation of a PRO instrument for patients with cirrhosis or if they assessed the clinical (case mix) variables determining responses to established PRO scales.). Eleven studies were selected that yielded 259 items specific to patients with cirrhosis. After removing duplicates, 152 unique items were isolated. These items were consolidated into 7 domains: physical symptoms, physical function, mental health, general function, cognition, social life, and satisfaction with care. The 7 domains included 52 sub-domains (e.g. physical domain; abdominal pain subdomain). Twelve variables were identified that independently modified established PRO scales. These included clinical factors (severity of liver disease and its complications, medication burden, and comorbidities), specific PROs (cramps, pruritis), and surrogate outcome measures (falls, hospitalization).

Conclusion: This scoping review identified and categorized a large existing set of PRO concepts that matter to patients with cirrhosis. These outcomes may now be translated into usable measures for both the assessment of the quality of cirrhosis care in clinical practice and to perform research from the patient's perspective.

Introduction

The prevalence of cirrhosis in the US has almost doubled in the last decade, resulting in a substantial rise in its associated morbidity and mortality.(1, 2) As many as half of patients with cirrhosis develop clinical complications, including variceal hemorrhage, ascites, hepatic encephalopathy (HE), and hepatocellular carcinoma. The health burden of cirrhosis is amplified by its dramatic impact on patients' health related quality of life (HRQOL), resulting from a range of physical, psychological, and social stressors engendered by cirrhosis and its treatment.

Ensuring that patients with serious illness receive patient-centered care is a fundamental goal of medical care. For this care to be patient-centered, it must be aligned with what matters to the patients. Despite the realization that patient-reported outcomes (PROs) are important to patients, current quality improvement efforts rarely assess PROs. One explanation underlying this disconnect is lack of standardized PROs that may serve as benchmarks for quality measurement and improvement in cirrhosis.

To address this gap, and under the auspices of the Practice Metrics Committee of the American Association for the Study of Liver Disease, we conducted a scoping review of PROs in cirrhosis. Our goal was to identify and summarize the PRO domains that may serve as candidates for a set of outcomes as part of quality improvement efforts in cirrhosis.

Methods

We performed a scoping review. A scoping review is a variant of systematic review which aims to identify and map key concepts with a large body of evidence.(3) The scoping review methodology can be more appropriate than a systematic review when the body of literature is large, complex, heterogeneous and without a prior comprehensive review.(4) We hypothesized that the literature would already contain significant information about PROs relevant to cirrhosis, but the manuscripts may not be explicitly labeled as such.

Search Strategy

With the aid of an informationist with expertise in scoping reviews (JS) we searched six databases: Medline (OVID), Cumulative Index to Nursing and Allied Health Literature , Embase, PsycINFO, and Cochrane Library. No date restrictions were applied, and final searches were conducted between April 20, 2017 and June 1, 2017. The search strategy for each database is provided in a **Technical Supplement**. Searches combined a block of terms specific to disease (i.e., cirrhosis and its complications, as well as each liver disease enumerated) with terminology specific to PROs (e.g. patient reported measures, quality of life, and patient satisfaction) and with names of published PRO instruments used in liver disease (e.g., SF-36) abstracted from a prior systematic review.(5). Sentinel articles were used to validate the search strategy and provide additional references through looking at reference lists and conducting citation tracking searches through the database SCOPUS. Articles meeting inclusion criteria were also used to citation track using Scopus.

Study Selection

Studies were included if they reported the construction/validation of a PRO instrument for patients with cirrhosis or if they assessed the clinical variables that determined responses to established PRO scales and reported granular data specific domains/responses within the scales. As above, we defined PRO as patients' own assessment of their health status including symptoms, reports of daily functioning, quality of life and satisfaction with healthcare. For example, if a study on quality of life provided details on these domains it was included, but if it only reported summary scores from a previously developed instrument (such as Short Form-36; SF-36) then it was excluded.

We only included English language publications. We excluded studies focusing on liver transplant, including those pertaining to patients awaiting liver transplant or recollecting their condition prior to transplantation. We also excluded studies of children, patients with acute liver failure, and non-cirrhotic chronic liver disease (including treatment for hepatitis C), hepatocellular carcinoma, and studies that focused on pre- or post-liver transplant experiences.

Seven reviewers independently screened titles and abstracts for eligibility. Each title was reviewed by at least 2 reviewers. The papers excluded by title, abstract and after full-text review were recorded. Each reviewer selected the full text studies they judged as relevant or unclear. These studies were included in a final grouping where selection conflicts between the two index

reviewers were further adjudicated by two arbitrators (EBT and MV) where unresolved conflicts were settled by a third arbitrator (FK).

Data extraction and analysis

Included studies were summarized according to their population, aims, methods and key findings. All survey items and determinants of PRO responses were aggregated and categorized by two reviewers (authors EBT, MV). Verbatim duplicates were excluded. Discrepancies with respect to inclusion and categorization were adjudicated by a third review (author FK).

Author Manuscript

Results

Population Characteristics in Included Studies

Of 5,647 studies screened, 11 studies met our inclusion criteria (Figure 1). For a description of the included studies, see Table 1. Of these 11 studies, 4 were from the US,(6-9) 2 from Denmark,(10, 11) and 1 each from China, Taiwan, Japan, Spain, and Italy.(12-16) Overall, these studies enrolled 2,299 (range 11-544) patients. The stage of liver disease was available for 1,550 (67%), of whom 586 (38%) were Child A and 964 (62%) were Child B-C. Granular details of cirrhosis etiology were available for 1,268 (55%) patients, of whom 643 (51%) had viral hepatitis and 360 (28%) had alcoholic liver disease.

Description of Study Aims and Methods (Table 1)

Health-related quality of life (HRQOL) or PRO scale development:

Four studies – by Younossi, Gralnek, Onishi, and Zhang – aimed to create disease-specific scales. Three of these studies only included patients with cirrhosis. The fourth study included patients with as well as those without cirrhosis; however, the majority (66%) had cirrhosis in this study.(7, 9, 14, 16) One study (Onishi(14)) focused exclusively on patients with ascites. Each study utilized a deliberate, stepwise approach to determine the pertinent domains and questions; these included semi-structured patient interviews to develop themes, separate interviews to narrow and refine the questions, and an evaluative cohort to demonstrate final results which included an assessment of responsiveness to therapy.

Qualitative analysis:

Four studies described the results of qualitative analyses where patients were asked open ended questions about their experiences. In 3 cases, these were performed in focus groups with semi-structured interviews. Tsai interviewed patients and asked them to rank-order the most important physical and psychological components of cirrhosis.(12) Over the course of two papers,(10, 11) Mikkelsen described the results of patient interviews focusing on the conditions that limit or support coping with physical and psychological problems before and after a group-therapy intervention. Vaughn mailed surveys with questions and opportunities for free-text responses to capture the rate and impact of feelings of stigma.(8)

Impact of clinical variables on PRO domains:

Cross-sectional survey studies by Marchesini, Chatrath, and Roman evaluated the impact of clinical variables on domains of established PRO scales including the Chronic Liver Disease Questionnaire, Short Form-36 and Nottingham Health Profile, respectively.(6, 13, 15) Roman was specifically interested in the impact of falls and cognitive dysfunction and Chatrath focused exclusively on the impact of muscle cramps. Marchesini explored several clinical variables and used regression techniques to determine the factors independently associated with suboptimal PROs.

Categorized Study Findings

Overall, the 11 studies yielded 259 items specific to patients with cirrhosis. After removing duplicates, 152 unique items were isolated (**Supplementary Table**). Each could be categorized into one of 7 broader domains (physical symptoms, physical function, mental health, general function, cognition, social life, and satisfaction with care) as well as 52 sub-domains. (**Figure 2**) The physical health domain had the most sub-domains (e.g. abdominal pain, appearance, dizziness). Examples of the mental health domain included depression and alcohol abuse, the function domain included items regarding career and daily activities, the social life domain dealt with stigma and isolation, the satisfaction with care domain touched on items relating to medication side effect concerns and the quality of the patient-doctor relationship, and, finally, the cognition domain included items on concentration and forgetfulness among others. In many cases, multiple items referred to the same sub-domain, e.g. multiple questions covered material pertinent to abdominal pain, bloating and sexual function. There were many ways of asking about, for example, the abdominal pain or itching sub-domains of physical health. In the Supplementary Table, we provide representative example items for each subdomain, e.g. “I was annoyed at abdominal pain and indigestion” (abdominal pain from Zhang et al(16)) or “How much have you been troubled by itching during the last two weeks?” (pruritis from Younossi et al(5)).

Multiple studies evaluated whether specific variables were associated with significant differences in the scores of PRO scales such as the SF-36, Nottingham Health Profile, and Chronic Liver Disease Questionnaire. (Table 3) Twelve variables were identified based on the review of these studies. These included clinical factors (etiology and severity of liver disease,

cognitive dysfunction and hepatic encephalopathy, ascites, comorbidities, medication burden, loop diuretics, hospitalization), and patient reported symptoms (cramps, pruritis, falls)

Author Manuscript

Discussion

In this scoping review, we systematically identified 152 distinct PROs reported by patients with cirrhosis. We then distilled them into a set of 7 major domains and 52 sub-domains. These data from 11 studies reflect the experiences of 2,299 patients from 7 countries across the spectrum of disease etiology and severity. Whereas any one study's results may not generalize to another context, this scoping review provides a comprehensive list of patient reported outcomes that are applicable to most patients with cirrhosis seen in different health care settings.

These data extend the literature on PROs in cirrhosis in 2 principle ways. First, our goal was to identify a broad range of PROs that matter to our patients. Many disease-specific HRQOL instruments (e.g. Chronic Liver Disease Questionnaire(9) and Liver Disease Quality of Life(7)) have already been developed for patients with cirrhosis. Other non-specific tools, such as the Patient-Reported Outcomes Measurement Information System, have been validated in cirrhotic populations.(17) Indeed (and not surprisingly) the broader domains that we identified map well with the domains in existing HRQOL instruments. Our review also found many additional items and sub-domains that were not included in previous HRQOL tools. Whereas HRQOL instruments reliably capture the patient's values, preferences, and response to therapeutic interventions, they do not necessarily speak to other PRO domains such as symptom status, function, satisfaction with care or adherence to medication.(18) Furthermore, in contrast to the development of psychometric indices, for the purpose of Quality Improvement it is important to identify measures that are sufficiently granular to inform specific therapeutic needs

(i.e. as relates to frailty or sexual dysfunction) and are responsive to therapeutic interventions (such as control of ascites).

Second, our review also identified 12 variables that had statistically significant and clinically meaningful impact on established HRQOL scales. Although some of these factors were PROs (pruritis, cramps), most were clinician reported features of cirrhosis that significantly impacted PROs. The latter may either serve as surrogate outcome measures (such as falls, hospitalization) or variables for case-mix risk adjustment of PROs (such as the etiology of liver disease and the presence of comorbid conditions).

To build on this study, we suggest two next steps. One, these PROs can serve as important measures for clinical care that many physicians may want to explore with their patients. Answers to many questions that may often go unasked, about, for example, falls, pruritis, or sexual function each have the capacity to modify clinical management in meaningful ways. Two, these PROs will serve as potential candidates for outcome based quality measures. These items will serve as candidate outcome measures for an upcoming 2-round modified Delphi panel process for ranking and selection by a group of content experts. Thereafter, a specification process will follow to convert these findings into discrete measures with clear numerators, denominators, and denominator exclusions, that can be implemented into clinical care and followed longitudinally. A similar PRO identification process was recently employed by the International Consortium for Health Outcomes Measurement group.(19, 20) As this group has identified, new reporting standards may increase the demands for data collection on frontline

providers. Implementation is an unresolved challenge for the growing experience with PRO sets. (19-21) In addition to the work of PRO identification, implementation efforts designed with sensitivity to clinician workflow are necessary. The optimal quality measure is clinically meaningful, standardized and easily measured while neither overburdening the frontline clinician (and patient) nor increasing the costs of healthcare delivery. Realizing the goal of integrating a set of PRO assessments in routine clinical practice will require designing items with responses that are easily abstracted from existing data and leveraging the functionality of electronic health records. In **Figure 3**, we summarize the work to date and outline the remaining steps needed to achieve our goals.

These data must be interpreted in the context of the study design. First, given the inclusion criteria for the selected studies, these data apply to pre-transplant adult patients with cirrhosis; generalizability to post-transplant or pediatric patients is unclear. Second, the list of 52 sub-domains may be reduced further if some factors are found to be duplicative or equivalent by patients. For example, the term “bleeding episodes” may suffice for hematemesis, melena, and epistaxis. Third, the relative importance of specific domains is certain to change with the patient’s clinical context. The patient with Child A cirrhosis may benefit from surveys that focus on specific domains and sub-domains such as mental health (sexual function, alcohol, and stigma) whereas those with Child C may need to be asked different questions (such as adherence, isolation, and caregiver burden).

Conclusion

The symptoms and preferences expressed by patients with cirrhosis are equal in importance to their clinical outcomes. Well defined quality indicators based on processes of care have been defined to facilitate improved clinical outcomes. Similar indicators are lacking for PROs. This scoping review identified a large existing set of PRO concepts, which may now be translated into usable measures to support quality improvement in cirrhosis.

Author Manuscript

Figure 1: Flow Diagram of Study Selection**Figure 2: Domains and Sub-domains of Patient Reported Outcomes in Cirrhosis****Figure 3: Overview of the Process Translating Patient Reported Outcomes (PROs) into Quality Measures**

The goal of Practice Metrics Committee of the American Association for the Study of Liver Disease is to create a registry that tracks clinical and patient reported outcomes. To achieve this goal, the committee is developing a platform that allows for the integration of clinical data (e.g. etiology, disease severity, and comorbid illnesses) with PROs obtained during a clinical visit in the Electronic Health Record (EHR). The work described in this paper is the crucial first step where the key PROs for patients with cirrhosis have been collected from the literature. Our next step is to refine and specify the PROs (i.e. how they will be measured) during patient focus groups and a modified Delphi-process with expert hepatologists.

Author Manuscript

Table 1: Characteristics of Included Studies

Author (Year)	Population Evaluated	Aims	Method	Key findings
Younossi 1999	133 Ambulatory patients, CTP A (32%), CTP B (23%), CTP C (11%), no cirrhosis (34%). Cholestatic disease (23%), 'hepatocellular' (77%)	Develop disease-specific HRQOL instrument	Semi-structured interviews to select 156 candidate instrument items in cohort of 60 patients. Determined importance of each item in separate cohort of 75 patients for reduction to 29 items.	Identified 6 domains: abdominal symptoms, fatigue, systemic symptoms, activity, emotional function, and worry. Scores worsen with CTP class.
Gralnek 2000	221 ambulatory patients CTP A (29%), B (52%), C (19%). Viral (51%), Alcohol (16%), Cholestatic (12%)	Develop disease-specific HRQOL instrument	Semi-structured interviews. Psychometric analysis. Content validation.	36 items detailing activity of daily living, concentration, memory, sexual functioning, sleep, loneliness, hopelessness, quality of social interaction, health distress, and self-perceived stigma.
Marchesini 2001	544 patients (ambulatory and admitted) CTP A (38%), B (38%), C (24%). Viral (64%), alcohol (29%).	Determine clinical variables associated with HRQOL (SF-36 and NHP)	Cross-sectional survey responses. Results compared to age- and sex-matched healthy controls	The two most important clinical variables associated with HRQOL were CTP and muscle cramps. The presence of HE, pruritus, ascites, diuretics, hospitalization, and comorbidities affected HRQOL subscales.
Chatrath 2012	150 ambulatory patients. CTP A (29%), CTP B (47%), CTP C (24%). Viral (42%), Alcohol (22%)	Determine impact of cramps on HRQOL (using CLDQ)	Cross-sectional survey responses and clinical assessment	Cramp severity correlates with CLDQ score. Cramps associated with worse scores in all CLDQ subscales but worry.
Tsai 2012	49 hospitalized patients. CTP A (6%), CTP B (43%), CTP C (51%). Alcohol (59%), viral (35%)	Determine frequency of physical and psychological symptoms	Semi-structured interviews. Rank ordering by frequency. Content validation.	Physical and psychological symptoms are highly correlated. Abdominal symptoms and worry were the most severe physical and psychological domains, respectively.
Roman 2013	118 ambulatory patients. CTP A (62%), CTP B (34%), CTP C (4%). Alcohol (62%), Viral (36%)	Determine relationship between falls and HRQOL (using SF-36)	Cross-sectional survey responses and clinical assessment for cognitive dysfunction.	Physical components of HRQOL are most associated with cognitive dysfunction and hyponatremia. Mental components of HRQOL are most associated with falls
Vaughn 2014	149 ambulatory patients. CTP A (58%), CTP B (36%), CTP C (5%). Viral (34%), Alcohol (12%)	Determine prevalence and impact of stigma	Cross-sectional survey responses to questions on stigma abstracted from multiple surveys with opportunity for free-text response.	Stigma is associated with lower QOL, depression, lower likelihood of seeking medical care, and less social support.

Onishi 2014	175 ambulatory patients evaluated before and after ascites therapy. CTP A (12%), CTP B (50%), CTP C (38%)	Develop ascites specific symptom scale	Semi-structured interviews with psychometric analysis. Longitudinal assessment for changes following treatment.	Seven question scale that correlates with severity of ascites, SF-36 scores, and response to treatment.
Mikkelsen 2015,2016	11 ambulatory patients with alcoholic cirrhosis and hepatic encephalopathy	To identify conditions that limit or support coping with physical and psychological problems	Semi-structured interviews before and after a coping and physical activity group intervention	Patients feel responsible to and seek acknowledgement/positive attitudes from their clinicians, find it difficult to seek help for alcohol relapse. The intervention improves patient assessments of self-control, community and strength.
Zhang 2016	464 ambulatory patients, unknown CTP and etiology	To develop the LC-PROM, a cirrhosis-specific PRO scale that addresses all physical symptoms, psychological feelings, daily activities, and therapeutic status.	Semi-structured interviews with 10 patients followed by item refinement by another 10 patients. Item reduction performed in a sample of 200 subjects (150 with cirrhosis). Test performance in 464 patients with cirrhosis and 112 controls.	The LC-PROM consists of 55 items which include questions to obtain information about treatment satisfaction, compliance and drug side effects.

CLDQ = Chronic Liver Disease Questionnaire, CTP = Child-Turcotte-Pugh, HRQOL = health related quality of life, LC-PROM = Liver Cirrhosis Patient Reported Outcome Measure, NHP = Nottingham Health Profile, PRO = patient reported outcomes, QOL = quality of life, SF-36 = Short-Form-36

Autho

Table 2: Domains of Established Health-Related Quality of Life Scales Impacted by Clinical Variables

Scale / Study	Domains affected by Clinical Variables	Clinical Variables											
		Ascites	Co-morbidity	Severity of disease	Cognitive Dys-function	Pill Burden	Disease Etiology	Falls	Hospital Admits	HE	Loop Diuretic	Muscle Cramps	Pruritis
SF-36	General health	●	-	-	●	-		●	-	●	-	●	●
	Vitality	●	-	●	●	-		●	-	●	●	●	●
	Physical roles	●	-	●	●	●		●	●	●	●	●	●
	Physical functioning	●	-	●	●	●		●	●	●	●	●	●
	Emotional roles	●	-	-	●	●		●	-	●	●	●	●
	Mental health	●	-	-	●	-		●	-	-	●	●	●
	Social Functioning	-	-	●	●	-		●	-	-	-	●	●
	Bodily pain	●	-	-	-	●		●	●	-	●	●	-
NHP	Energy	●	-	●		●			●	●	-	●	●
	Sleep	●	-	-		-			-	●	-	●	●
	Pain	-	-	-		●			-	-	-	●	●
	Emotional Reactions	●	●	-		-			-	-	-	●	●
	Social Isolation	●	●	-		-			-	-	-	●	●
	Physical Mobility	●	●	●		●			●	●	●	●	●
CLDQ	Fatigue											●	
	Activity											●	
	Systemic Symptoms											●	
	Abdominal Symptoms											●	
	Emotional Function											●	
Vaughn	Stigma					●					●		

CLDQ = Chronic Liver Disease Questionnaire, HE = Hepatic Encephalopathy, NHP = Nottingham Health Profile, SF-36 = Shortform-36. (●) indicates a statistically significant association, (-) indicates the lack of an association. A shaded box indicates that the impact of these variables were not assessed for that particular scale/study.

References

1. Beste LA, Leipertz SL, Green PK, Dominitz JA, Ross D, Ioannou GN. Trends in burden of cirrhosis and hepatocellular carcinoma by underlying liver disease in US veterans, 2001-2013. *Gastroenterology* 2015;149:1471-1482 e1475; quiz e1417-1478.
2. D'Amico G, Garcia-Tsao G, Pagliaro L. Natural history and prognostic indicators of survival in cirrhosis: a systematic review of 118 studies. *J Hepatol* 2006;44:217-231.
3. Arksey H, O'Malley L. Scoping studies: towards a methodological framework. *International journal of social research methodology* 2005;8:19-32.
4. Peters MD, Godfrey CM, Khalil H, McInerney P, Parker D, Soares CB. Guidance for conducting systematic scoping reviews. *International journal of evidence-based healthcare* 2015;13:141-146.
5. Younossi Z, Henry L. Systematic review: patient-reported outcomes in chronic hepatitis C-the impact of liver disease and new treatment regimens. *Alimentary pharmacology & therapeutics* 2015;41:497-520.
6. Chatrath H, Ghabril M, Tandra S, Liangpunsakul S, Lacerda MA, Vinayek R, Yoo HY, et al. Prevalence and morbidity associated with muscle cramps in patients with cirrhosis. *Gastroenterology* 2011;140:S956.
7. Gralnek IM, Hays RD, Kilbourne A, Rosen HR, Keeffe EB, Artinian L, Kim S, et al. Development and evaluation of the Liver Disease Quality of Life instrument in persons with advanced, chronic liver disease--the LDQOL 1.0. *American Journal of Gastroenterology* 2000;95:3552-3565.
8. Vaughn-Sandler V, Sherman C, Aronsohn A, Volk ML. Consequences of perceived stigma among patients with cirrhosis. *Digestive Diseases & Sciences* 2014;59:681-686.
9. Younossi ZM, Guyatt G, Kiwi M, Boparai N, King D. Development of a disease specific questionnaire to measure health related quality of life in patients with chronic liver disease. *Gut* 1999;45:295-300.
10. Mikkelsen MR, Hendriksen C, Schiødt FV, Rydahl-Hansen S. Coping and rehabilitation in alcoholic liver disease patients after hepatic encephalopathy--in interaction with professionals and relatives. *Journal of Clinical Nursing* 2015;24:3627-3637.
11. Mikkelsen MR, Hendriksen C, Schiødt FV, Rydahl-Hansen S. Alcoholic liver disease patients' perspective of a coping and physical activity-oriented rehabilitation intervention after hepatic encephalopathy. *Journal of Clinical Nursing* 2016;25:2457-2467.
12. Li-Hung T, Chang-Ming L, Shu-Chen C, Chia-Ling C, Su-Jane L, Lai-Chu S. Symptoms and Distress Among Patients With Liver Cirrhosis but Without Hepatocellular Carcinoma in Taiwan. *Gastroenterology Nursing* 2014;37:49-59.
13. Marchesini G, Bianchi G, Amodio P, Salerno F, Merli M, Panella C, Loguercio C, et al. Factors associated with poor health-related quality of life of patients with cirrhosis. *Gastroenterology* 2001;120:170-178.
14. Onishi Y, Wakita T, Fukuhara S, Noguchi Y, Okada M, Sakaida I, Sasaki Y, et al. Development and validation of a symptom scale specific for ascites accompanied with cirrhosis: The ASI-7. *Clinical and translational gastroenterology* 2014;5:e48.
15. Román E, Córdoba J, Torrens M, Guarner C, Soriano G. Falls and cognitive dysfunction impair health-related quality of life in patients with cirrhosis. *European Journal of Gastroenterology & Hepatology* 2013;25:77-84.
16. Ying Z, Yuanyuan Y, Jing L, Yanbo Z, Zhang Y, Yang Y, Lv J, et al. LC-PROM: Validation of a patient reported outcomes measure for liver cirrhosis patients. *Health & Quality of Life Outcomes* 2016;14:1-16.

17. Bajaj J, Thacker L, Wade J, Sanyal A, Heuman D, Sterling R, Gibson D, et al. PROMIS computerised adaptive tests are dynamic instruments to measure health-related quality of life in patients with cirrhosis. *Alimentary pharmacology & therapeutics* 2011;34:1123-1132.
18. Wilson IB, Cleary PD. Linking clinical variables with health-related quality of life: a conceptual model of patient outcomes. *Jama* 1995;273:59-65.
19. Ong WL, Schouwenburg MG, van Bommel AC, Stowell C, Allison KH, Benn KE, Browne JP, et al. A standard set of value-based patient-centered outcomes for breast cancer: the International Consortium for Health Outcomes Measurement (ICHOM) initiative. *JAMA oncology* 2017;3:677-685.
20. Zerillo JA, Schouwenburg MG, van Bommel AC, Stowell C, Lipka J, Bauer D, Berger AM, et al. An International Collaborative Standardizing a Comprehensive Patient-Centered Outcomes Measurement Set for Colorectal Cancer. *Jama oncology* 2017;3:686-694.
21. Mahmud I, Kelley T, Stowell C, Haripriya A, Boman A, Kessler I, Morlet N, et al. A proposed minimum standard set of outcome measures for cataract surgery. *JAMA ophthalmology* 2015;133:1247-1252.

Author Manuscript

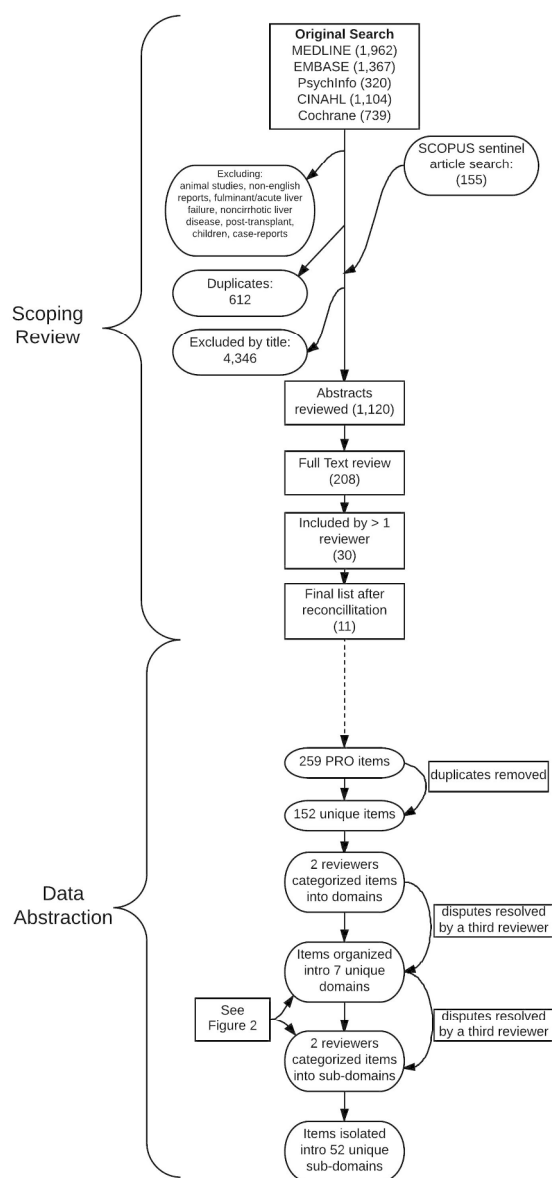


Figure 1: Flow Diagram of Study Selection

126x255mm (300 x 300 DPI)

AU

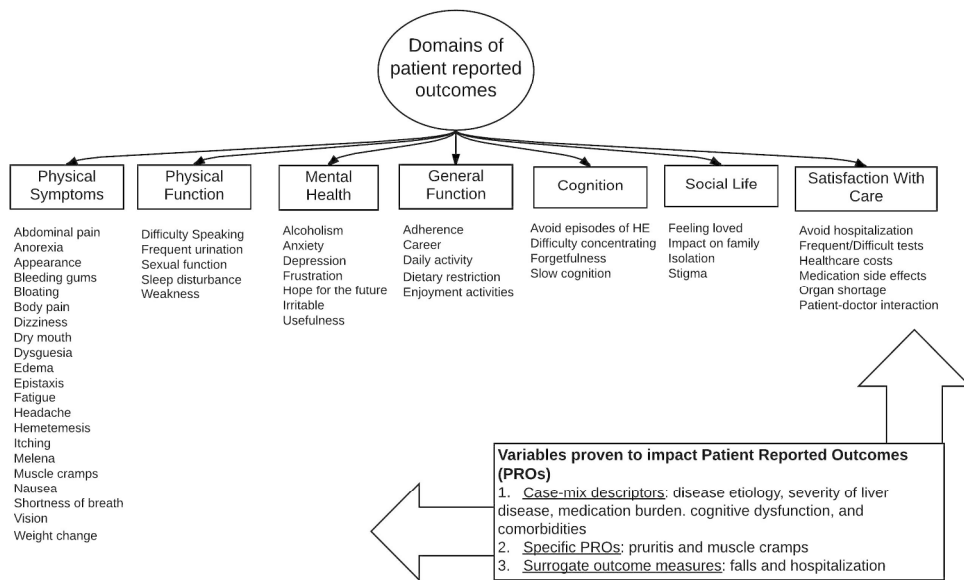


Figure 2: Domains and Sub-domains of Patient Reported Outcomes in Cirrhosis

224x137mm (300 x 300 DPI)

Author M

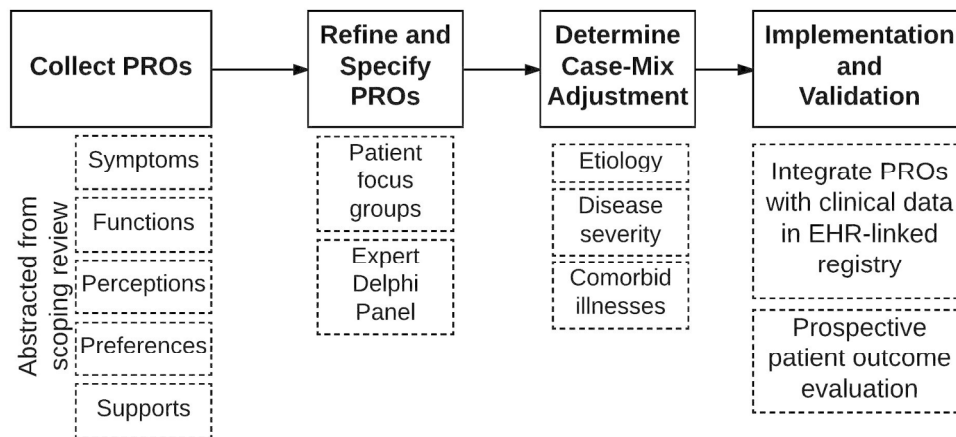


Figure 3: Overview of the Process Translating Patient Reported Outcomes (PROs) into Quality Measures!! † The goal of Practice Metrics Committee of the American Association for the Study of Liver Disease is to create a registry that tracks clinical and patient reported outcomes. To achieve this goal, the committee is developing a platform that allows for the integration of clinical data (e.g. etiology, disease severity, and comorbid illnesses) with PROs obtained during a clinical visit in the Electronic Health Record (EHR). The work described in this paper is the crucial first step where the key PROs for patients with cirrhosis have been collected from the literature. Our next step is to refine and specify the PROs (i.e. how they will be measured) during patient focus groups and a modified Delphi-process with expert hepatologists

164x74mm (300 x 300 DPI)

Author IV

Paper	Item
Gralnek	I am embarrassed about how I look in public
Gralnek	During the past 4 weeks, how often: Bleeding gums?
Gralnek	During the past 4 weeks, how often: Bodily pain?
Gralnek	Your ability to work around the house
Gralnek	Doing activities involving concentration and thinking
Gralnek	During the past 4 weeks, how often: Faintness or dizziness?
Gralnek	During the past 4 weeks, how often: Food not tasting good?
Gralnek	During the past 4 weeks, how often: Swelling of your feet and/or legs with fluid
Gralnek	Doing any leisure or recreational activities inside the home
Gralnek	During the past 4 weeks, how often: Bloody nose?
Gralnek	How much of the time, during the past 4 weeks Have you had any trouble with your memory?
Gralnek	During the past 4 weeks, how often: Frequent urination?
Gralnek	How much of the time, during the past 4 weeks Were you frustrated about your liver disease?
Gralnek	During the past 4 weeks, how often: Headaches?
Gralnek	How much of the time, during the past 4 weeks Were you discouraged by your liver disease?
Gralnek	Did your liver disease cause you to lose your sense of humor
Gralnek	How much of the time, during the past 4 weeks Were you affectionate towards others?
Gralnek	During the past weeks, how often: Nausea (upset stomach) and/or vomiting
Gralnek	Your sex life?
Gralnek	How much of the time during the past 4 weeks did you Get the amount of sleep you needed?
Gralnek	During the past 4 weeks, how often: Changes in vision?
Gralnek	During the past 4 weeks, how often: Lack of appetite?
Gralnek	How much of the time, during the past 4 weeks Was your liver disease a worry in your life?
Gralnek	During the past 4 weeks, how often: Soreness in your muscles?
Gralnek	Agree? Too much of my time is spent dealing with my liver disease
Gralnek	How much did the effects of your liver disease bother you: Any dietary restriction?
Gralnek	Did you have difficulty reasoning and solving problems?
Gralnek	How much of the time, during the past 4 weeks Did you become confused?
Gralnek	How much did the effects of your liver disease bother you: Any fluid restriction?
Gralnek	How much did the effects of your liver disease bother you: Your ability to travel?
Gralnek	During the past 3 weeks, how often: Feeling washed out or drained
Gralnek	How much of the time during the past 4 weeks did you Feel drowsy or sleepy during the day?
Gralnek	Agree? I now plan less for the future than before I had liver disease
Gralnek	Agree? I have great faith in the future
Gralnek	Agree? I look forward to the future with hope
Gralnek	Did you make unreasonable demands on your family and/or friends
Gralnek	Did you act irritable toward those around you?
Gralnek	Did you isolate yourself from people around you?
Gralnek	How much of the time during the past 4 weeks Did you lack companionship?
Gralnek	How much of the time during the past 4 weeks Did you feel left out?
Gralnek	Going to social events outside your home
Gralnek	How much of the time during the past 4 weeks Did you have no one you could turn to?
Gralnek	How your medicines make you feel?
Gralnek	During the past 4 weeks, how much of a problem for you was lack of sexual interest?
Gralnek	During the past weeks, did your liver disease interfere with your sexual relationships?
Gralnek	Have you had any sexual activity in the past weeks?*

Gralnek How much of a problem was Ability to satisfy sexual partner
 Gralnek Overall, how satisfied were you with your sexual function during the past weeks?
 Gralnek During the past weeks, how often: Shortness of breath
 Gralnek Did you take naps (minutes or longer) during the day
 Gralnek Did you react slowly to things that were said or done?
 Gralnek Agree? Some people avoid me because of my liver disease
 Gralnek Agree? My liver disease makes me stand out in public
 Gralnek Agree? Because of my liver disease I feel flawed and incomplete
 Gralnek During the past 3 weeks, how often: Black, tarry appearing bowel movements?
 Gralnek Did you feel weighed down by your liver problems?
 Gralnek During the past 4 weeks, how often: Swelling of your abdomen with fluid
 Gralnek How much of the time, during the past 4 weeks Concentrating on conversations
 Gralnek How much of the time, during the past 4 weeks Concentrating on a task or job
 Gralnek Did you have trouble keeping your attention on an activity for long
 Gralnek Did you Have trouble staying awake during the day?
 Gralnek Have you had trouble remembering names of people
 Gralnek Have you had trouble remembering where you put things
 Gralnek have you had trouble remembering things people tell you
 Gralnek have you had trouble remembering Things you read earlier in the day
 Gralnek Did you forget things that happened recently?
 Gralnek Agree? My future seems dark to me
 Gralnek Did you feel isolated from others?
 Gralnek Were you an outgoing person?
 Gralnek Were you able to find companionship when wanted it
 Gralnek During the past 4 weeks, how often: Itchy skin?
 Gralnek How much of a problem was Difficulty getting or keeping an erection
 Gralnek How much of a problem was Difficulty having orgasm
 Gralnek How much of a problem was Inadequate lubrication
 Gralnek How much of a problem was Difficulty having orgasm
 Gralnek How much of a problem was Ability to satisfy sexual partner
 Gralnek Did you Get enough sleep to feel rested upon waking in the morning
 Gralnek Agree? I avoid doing some things in public because of my liver disease
 Gralnek Agree? Some people are uncomfortable around me because of my liver disease
 Mikkelsen Concealment of alcohol during relapse makes them not capable of seeking help
 Mikkelsen Seek supportive acknowledgement from professionals and relatives
 Mikkelsen Desire to feel important
 Mikkelsen Do not have the strength to avoid alcohol
 Mikkelsen Think of alcohol in relation to enjoying themselves
 Mikkelsen Fear of hepatic encephalopathy
 Mikkelsen After a group therapy intervention: felt they can do more in everyday life
 Mikkelsen After a group therapy intervention: felt they can do more in everyday life
 Mikkelsen After a group therapy intervention: Daily life became more manageable
 Mikkelsen Need to experience normality
 Mikkelsen Felt better during and after exercise
 Mikkelsen Avoid hospitalization
 Mikkelsen Know that their relatives will be there for them.
 Mikkelsen Relatives are not helpful when patients are met with a lack of understanding

Mikkelsen Desire to be a part of a community
 Mikkelsen Seek to feel welcomed by the professionals
 Mikkelsen Prefer the professionals to be proactive
 Mikkelsen Feeling of security appears in interaction with professionals
 Mikkelsen Experienced the cirrhosis clinic as a place where they could be open
 Mikkelsen Feel a responsibility towards the professionals,
 Mikkelsen Hand over the responsibility to the professionals to restore the diseased body
 Mikkelsen The feeling of security gives courage to the patient to move forward
 Mikkelsen Lack of courtesy is a threat to patients' security
 Mikkelsen Need the professionals to set limits
 Mikkelsen Feel not like other alcoholics, more like in a class of their own
 Mikkelsen It is challenging for patients to be 'met with distrust
 Mikkelsen It is challenging for patients to be met with irritation from others
 Mikkelsen Have a failing self-esteem
 Mikkelsen After a group therapy intervention: strengthened their muscles.
 Mikkelsen The patient does not feel understood
 Mikkelsen Seek involvement of others
 Mikkelsen Felt reassured that the professionals were interested in them.
 Mikkelsen Some patients feel that they are looked down upon
 Onishi My stomach feels heavy when lying down.
 Onishi My stomach is bloated, so it is difficult to move around
 Onishi My stomach feels heavy
 Onishi have difficulty breathing after walking for 4–3 min
 Onishi cannot take deep breaths
 Onishi My stomach is bloated and uncomfortable
 Onishi cannot eat because my stomach is bloated
 Tsai Speaking lower
 Tsai Weight gain
 Tsai Skin bruising
 Tsai Decreased urine
 Tsai restless or dysphoric
 Tsai Abdominal discomfort
 Tsai Abdominal pain
 Tsai Worry the disease get worse
 Tsai Worry cannot recover from disease
 Tsai Worry symptoms will become a bigger problem
 Tsai Anxious
 Tsai Bleeding gums
 Tsai Abdominal bloat
 Tsai Ascites
 Tsai Emotional ups and downs
 Tsai Depressed
 Tsai Feel down and unhappy
 Tsai Annoyed by diet restrictions
 Tsai Inability to eat as much as before
 Tsai Inability to concentrate

Tsai Dizziness
 Tsai Dry mouth
 Tsai Bland tasting food
 Tsai Leg edema
 Tsai Nose bleeds
 Tsai Exhaustion
 Tsai daytime sleepy
 Tsai Allday drowsiness
 Tsai tiredness
 Tsai Worry impact on family due to disease
 Tsai itching of the skin
 Tsai Black/tarry stools
 Tsai Muscle cramps
 Tsai Nausea
 Tsai Worry about chance to obtain a donated liver for transplantation if needed
 Tsai Shortness of breath
 Tsai Poor sleep quality at night
 Tsai Can't fall asleep at night
 Tsai Acting slower
 Tsai weakness when lifting heavy objects
 Younossi How often during the last two weeks have you felt anxious?
 Younossi How much of the time during the last two weeks have you felt depressed?
 Younossi How much of the time during the last two weeks have you had a dry mouth
 Younossi How much of the time have you been troubled by itching during the last two weeks?
 Younossi How often during the last two weeks have you had muscle cramps?
 Younossi Have you been concerned about the availability of a liver if you need a liver transplant?
 Younossi Some people assume that because I have liver disease, I must have been a drinker
 Younossi Have you been bothered by having decreased strength?
 Younossi How much of the time during the last two weeks have you experienced abdominal pain?
 Younossi My liver disease makes me stand out to other people
 Younossi Have you been troubled by a feeling of abdominal bloating?
 Younossi How much of the time during the last two weeks have you felt unhappy?
 Younossi How much of the time during the last two weeks have you had mood swings?
 Younossi How much of the time have you been tired or fatigued during the last two weeks?
 Younossi How often during the last two weeks have you felt a decreased level of energy?
 Younossi Have you been worried about never feeling any better?
 Younossi Have you been worried about the impact your liver disease has on your family?
 Younossi I feel lonely more often than usual because of my liver disease
 Younossi I feel abandoned by family members because of my liver disease
 Younossi I avoid telling other people about my liver disease
 Younossi I feel like I am an outsider because of my liver disease
 Younossi I avoid doing some things in public because of my liver disease
 Younossi Some doctors or nurses don't like taking care of patients with liver disease
 Younossi I feel like some people are concerned that my liver disease could be contagious
 Younossi I feel like other people think I am a bad person because I have liver disease
 Younossi People with liver disease are looked down upon by society

Younossi I feel I have been treated with less respect by others because of liver disease

Younossi I feel like I am partially to blame for my liver disease

Younossi I feel less competent than I did before I was diagnosed with liver disease

Younossi have you been bothered by a limitation of your diet?

Younossi have you not been able to eat as much as you would like?

Younossi have you been worried that your symptoms will develop into major problems?

Younossi have you been worried about your condition getting worse

Younossi have you been troubled by a feeling of abdominal discomfort?

Younossi have you experienced bodily pain?

Younossi have you had problems concentrating?

Younossi have you felt sleepy during the day?

Younossi How often during the last two weeks have you felt drowsy?

Younossi How often during the last two weeks have you been irritable?

Younossi Has shortness of breath been a problem for you in your daily activities?

Younossi have you had difficulty sleeping at night?

Younossi Have you been unable to fall asleep at night?

Younossi Other people think I am partially to blame for my liver disease

Younossi Because of my liver disease, I feel flawed and incomplete

Younossi Some people avoid me because of my liver disease

Younossi Because of my liver disease, I sometimes feel useless

Younossi have you had trouble lifting or carrying heavy objects?

Zhang I was annoyed at abdominal pain and indigestion

Zhang I can follow the doctor's advice to give up bad living habits

Zhang I was worried about that the disease would affect my work and promotion

Zhang I continued to work

Zhang I can do shopping as usual

Zhang My relatives cared about my disease

Zhang I was satisfied with the healthcare costs

Zhang I had hematemesis

Zhang The disease affected my interpersonal relationships

Zhang I was worried about side effects of drugs

Zhang I was losing weight

Zhang I can take medicine following doctors advice

Zhang I was tired of taking medicine often

Zhang I felt anxious about my disease outcome

Zhang I was easy to relax being with others

Zhang I felt upset or fear easily

Zhang I felt angry easier than usual

Zhang My face looked dark and dull

Zhang I was pessimistic and there was nothing to make me happy

Zhang I gave up my hobbies

Zhang I lost interests in what interested me before

Zhang I can do simple outdoor activity (walking)

Zhang My family comforted me

Zhang I was lack of initiative in social life

Zhang	I had melena
Zhang	I felt annoyed about drawing blood and taking ultrasonic examination
Zhang	I was satisfied with current treatments
Zhang	I can go to visit doctors regularly
Zhang	I felt uncomfortable about my friends' strange eyes or attitude after I was ill
Zhang	I avoided social occasions or activities because of disease (e.g. parties)
Zhang	I felt loss of appetite
Zhang	I felt fatigue
Zhang	I was slow in reacting
Zhang	had pain in right upper quadrant
Zhang	I was worried my liver disease would cause more serious disease (e.g. cancer)
Zhang	I felt anxious easier than usual
Zhang	I felt abdominal distension
Zhang	I felt in a blue mood
Zhang	I felt like crying
Zhang	I had abnormal taste
Zhang	I had edema in my legs
Zhang	I felt sleepy in daytime
Zhang	I felt forgetful
Zhang	I didn't have any hope about my future
Zhang	I felt vague about my future
Zhang	I was worried my liver disease would affect my family
Zhang	I felt itchy in skin
Zhang	I vomited for nauseated
Zhang	I was satisfied with the medical services
Zhang	I had poor sleep at night
Zhang	I felt someone avoided me deliberately
Zhang	I felt unuseful about myself
Zhang	I can do simple housework
Zhang	I felt annoyed about drawing blood and taking ultrasonic examination

Note: In many instances, the item wording was reduced for this table by removing preambles in order to fit the operative part of the item in this supplement for easy review. Examples include "How often in the last 2 weeks have you..." or "How has your liver disease affected your..."

Auth

Technical Supplement: Search terms and search strings by database

Table of Contents

1. CINAHL – page 2-17
2. EMBASE – page 18 – 19
3. PsychINFO – page 20-43
4. Cochrane – page 44-45
5. Pubmed – page 46



Monday, May 01, 2017 9:48:37 AM

#	Query	Limiters/Expanders	Last Run Via	Results
S122	((S88 OR S89 OR S90 OR S91 OR S92 OR S93 OR S94 OR S95 OR S96 OR S97 OR S98 OR S99 OR S100 OR S101 OR S102 OR S103 OR S104 OR S105 OR S106 OR S107 OR S108 OR S109 OR S110 OR S111 OR S112 OR S113 OR S114 OR S115 OR S116 OR S117 OR S118 OR S119) AND (S87 AND S120)) AND LA english	Search modes - Boolean/Phrase	Interface - EBSCOhost Research Databases Search Screen - Advanced Search Database - CINAHL Complete	1,104
S121	(S88 OR S89 OR S90 OR S91 OR S92 OR S93 OR S94 OR S95 OR S96 OR S97 OR S98 OR S99 OR S100 OR S101 OR S102 OR S103 OR S104 OR S105 OR S106 OR S107 OR S108 OR S109 OR S110 OR S111 OR S112 OR S113 OR S114 OR S115 OR S116 OR S117 OR S118 OR S119) AND (S87 AND S120)	Search modes - Boolean/Phrase	Interface - EBSCOhost Research Databases Search Screen - Advanced Search Database - CINAHL Complete	Display
S120	S88 OR S89 OR S90 OR S91 OR S92 OR S93 OR S94 OR S95 OR S96 OR S97 OR S98 OR S99 OR S100 OR S101 OR S102 OR S103 OR S104 OR S105 OR S106 OR S107 OR S108 OR S109 OR S110 OR S111 OR S112 OR S113 OR S114 OR S115 OR S116 OR S117	Search modes - Boolean/Phrase	Interface - EBSCOhost Research Databases Search Screen - Advanced Search Database - CINAHL Complete	Display

Hepatology

This article is protected by copyright. All rights reserved.

1		OR S118 OR S119			
2					
3	S119	(patient n10 reported)	Search modes -	Interface - EBSCOhost	Display
4		AND (satisfaction or	Boolean/Phrase	Research Databases	
5		outcome* or measure* or		Search Screen - Advanced	
6		"quality of life")		Search	
7				Database - CINAHL Complete	
8					
9					
10	S118	""quality of life"" OR (MH	Search modes -	Interface - EBSCOhost	Display
11		"Quality of Life+")	Boolean/Phrase	Research Databases	
12				Search Screen - Advanced	
13				Search	
14				Database - CINAHL Complete	
15					
16					
17	S117	"QOL"	Search modes -	Interface - EBSCOhost	Display
18			Boolean/Phrase	Research Databases	
19				Search Screen - Advanced	
20				Search	
21				Database - CINAHL Complete	
22					
23					
24	S116	""health related quality of	Search modes -	Interface - EBSCOhost	Display
25		life""	Boolean/Phrase	Research Databases	
26				Search Screen - Advanced	
27				Search	
28				Database - CINAHL Complete	
29					
30					
31	S115	"HRQOL"	Search modes -	Interface - EBSCOhost	Display
32			Boolean/Phrase	Research Databases	
33				Search Screen - Advanced	
34				Search	
35				Database - CINAHL Complete	
36					
37					
38	S114	(MH "Outcome	Search modes -	Interface - EBSCOhost	Display
39		Assessment")	Boolean/Phrase	Research Databases	
40				Search Screen - Advanced	
41				Search	
42				Database - CINAHL Complete	
43					
44					
45	S113	(MH "Patient-Reported	Search modes -	Interface - EBSCOhost	Display
46		Outcomes")	Boolean/Phrase	Research Databases	
47				Search Screen - Advanced	
48				Search	
49				Database - CINAHL Complete	
50					
51					
52	S112	"EuroQOL-5D"	Search modes -	Interface - EBSCOhost	Display
53			Boolean/Phrase	Research Databases	
54				Search Screen - Advanced	
55				Search	
56				Database - CINAHL Complete	
57					
58					
59					
60					

1	S111	NHP	Search modes - Boolean/Phrase	Interface - EBSCOhost Research Databases Search Screen - Advanced Search Database - CINAHL Complete	Display
2					
3					
4					
5					
6					
7	S110	""nottingham health profile""	Search modes - Boolean/Phrase	Interface - EBSCOhost Research Databases Search Screen - Advanced Search Database - CINAHL Complete	Display
8					
9					
10					
11					
12					
13					
14	S109	""multi-dimensional fatigue inventory""	Search modes - Boolean/Phrase	Interface - EBSCOhost Research Databases Search Screen - Advanced Search Database - CINAHL Complete	Display
15					
16					
17					
18					
19					
20					
21					
22	S108	"sf-6d"	Search modes - Boolean/Phrase	Interface - EBSCOhost Research Databases Search Screen - Advanced Search Database - CINAHL Complete	Display
23					
24					
25					
26					
27					
28					
29	S107	"facit-f"	Search modes - Boolean/Phrase	Interface - EBSCOhost Research Databases Search Screen - Advanced Search Database - CINAHL Complete	Display
30					
31					
32					
33					
34					
35					
36	S106	"mfsi-sf"	Search modes - Boolean/Phrase	Interface - EBSCOhost Research Databases Search Screen - Basic Search Database - CINAHL Complete	Display
37					
38					
39					
40					
41					
42	S105	""sickness impact profile""	Search modes - Boolean/Phrase	Interface - EBSCOhost Research Databases Search Screen - Basic Search Database - CINAHL Complete	Display
43					
44					
45					
46					
47					
48	S104	(MH "Sickness Impact Profile")	Search modes - Boolean/Phrase	Interface - EBSCOhost Research Databases Search Screen - Basic Search Database - CINAHL Complete	Display
49					
50					
51					
52					
53					
54	S103	""liver disease symptom index""	Search modes - Boolean/Phrase	Interface - EBSCOhost Research Databases Search Screen - Basic Search Database - CINAHL Complete	Display
55					
56					
57					
58					
59					
60					

1	S102	"LDSI"	Search modes - Boolean/Phrase	Interface - EBSCOhost Research Databases Search Screen - Basic Search Database - CINAHL Complete	Display
2					
3					
4					
5					
6	S101	sf36 OR sf-36	Search modes - Boolean/Phrase	Interface - EBSCOhost Research Databases Search Screen - Basic Search Database - CINAHL Complete	Display
7					
8					
9					
10					
11					
12	S100	""short form 36""	Search modes - Boolean/Phrase	Interface - EBSCOhost Research Databases Search Screen - Basic Search Database - CINAHL Complete	Display
13					
14					
15					
16					
17					
18	S99	(MH "Short Form-36 Health Survey (SF-36)")	Search modes - Boolean/Phrase	Interface - EBSCOhost Research Databases Search Screen - Basic Search Database - CINAHL Complete	Display
19					
20					
21					
22					
23					
24	S98	"short form 8"	Search modes - Boolean/Phrase	Interface - EBSCOhost Research Databases Search Screen - Basic Search Database - CINAHL Complete	Display
25					
26					
27					
28					
29					
30	S97	sf16 or sf-16	Search modes - Boolean/Phrase	Interface - EBSCOhost Research Databases Search Screen - Basic Search Database - CINAHL Complete	Display
31					
32					
33					
34					
35					
36	S96	""short form 16""	Search modes - Boolean/Phrase	Interface - EBSCOhost Research Databases Search Screen - Basic Search Database - CINAHL Complete	Display
37					
38					
39					
40					
41					
42	S95	sf8 or sf-8	Search modes - Boolean/Phrase	Interface - EBSCOhost Research Databases Search Screen - Basic Search Database - CINAHL Complete	Display
43					
44					
45					
46					
47					
48	S94	""short form 8""	Search modes - Boolean/Phrase	Interface - EBSCOhost Research Databases Search Screen - Basic Search Database - CINAHL Complete	Display
49					
50					
51					
52					
53	S93	WPAI	Search modes - Boolean/Phrase	Interface - EBSCOhost Research Databases Search Screen - Basic Search Database - CINAHL Complete	Display
54					
55					
56					
57					
58					
59					

1	S92	""work productivity and impairment""	Search modes - Boolean/Phrase	Interface - EBSCOhost Research Databases Search Screen - Basic Search Database - CINAHL Complete	Display
2					
3					
4					
5					
6	S91	""liver disease quality of life""	Search modes - Boolean/Phrase	Interface - EBSCOhost Research Databases Search Screen - Basic Search Database - CINAHL Complete	Display
7					
8					
9					
10					
11					
12	S90	"LDQOL"	Search modes - Boolean/Phrase	Interface - EBSCOhost Research Databases Search Screen - Basic Search Database - CINAHL Complete	Display
13					
14					
15					
16					
17					
18	S89	"CLDQ"	Search modes - Boolean/Phrase	Interface - EBSCOhost Research Databases Search Screen - Basic Search Database - CINAHL Complete	Display
19					
20					
21					
22					
23					
24	S88	"chronic liver disease questionnaire"	Search modes - Boolean/Phrase	Interface - EBSCOhost Research Databases Search Screen - Basic Search Database - CINAHL Complete	Display
25					
26					
27					
28					
29					
30	S87	(S62 OR S63 OR S64 OR S65 OR S66 OR S67 OR S68 OR S69 OR S70 OR S71 OR S72 OR S73 OR S74 OR S75 OR S76 OR S77 OR S78 OR S79 OR S80 OR S81 OR S82 OR S83 OR S84 OR S85 OR S86)	Search modes - Boolean/Phrase	Interface - EBSCOhost Research Databases Search Screen - Advanced Search Database - CINAHL Complete	Display
31					
32					
33					
34					
35					
36					
37					
38					
39					
40					
41					
42	S86	"liver cirrhosis"	Search modes - Boolean/Phrase	Interface - EBSCOhost Research Databases Search Screen - Advanced Search Database - CINAHL Complete	Display
43					
44					
45					
46					
47					
48					
49	S85	(MH "Liver Cirrhosis+")	Search modes - Boolean/Phrase	Interface - EBSCOhost Research Databases Search Screen - Advanced Search Database - CINAHL Complete	Display
50					
51					
52					
53					
54					
55					
56	S84	"hepatitis c"	Search modes - Boolean/Phrase	Interface - EBSCOhost Research Databases	Display
57					
58					
59					
60					

1
2
3
4
5
6
7
8
9
10
11
12
13
14
15
16
17
18
19
20
21
22
23
24
25
26
27
28
29
30
31
32
33
34
35
36
37
38
39
40
41
42
43
44
45
46
47
48
49
50
51
52
53
54
55
56
57
58
59
60

Autbor Manuscript

			Search Screen - Advanced Search Database - CINAHL Complete	
S83	"hepatitis b"	Search modes - Boolean/Phrase	Interface - EBSCOhost Research Databases Search Screen - Advanced Search Database - CINAHL Complete	Display
S82	(MH "Hepatitis B+")	Search modes - Boolean/Phrase	Interface - EBSCOhost Research Databases Search Screen - Advanced Search Database - CINAHL Complete	Display
S81	(MH "Hepatitis C+")	Search modes - Boolean/Phrase	Interface - EBSCOhost Research Databases Search Screen - Advanced Search Database - CINAHL Complete	Display
S80	(MH "Liver Diseases, Alcoholic+")	Search modes - Boolean/Phrase	Interface - EBSCOhost Research Databases Search Screen - Advanced Search Database - CINAHL Complete	Display
S79	"liver disease*" AND alcoholic	Search modes - Boolean/Phrase	Interface - EBSCOhost Research Databases Search Screen - Advanced Search Database - CINAHL Complete	Display
S78	"fatty liver" AND (non-alcoholic or nonalcoholic)	Search modes - Boolean/Phrase	Interface - EBSCOhost Research Databases Search Screen - Advanced Search Database - CINAHL Complete	Display
S77	(MH "Nonalcoholic Fatty Liver Disease")	Search modes - Boolean/Phrase	Interface - EBSCOhost Research Databases Search Screen - Advanced Search Database - CINAHL Complete	Display
S76	"viral hepatitis"	Search modes - Boolean/Phrase	Interface - EBSCOhost Research Databases Search Screen - Advanced	Display

Search

Database - CINAHL Complete

1				Search	
2				Database - CINAHL Complete	
3					
4	S75	"chronic hepatitis"	Search modes -	Interface - EBSCOhost	Display
5			Boolean/Phrase	Research Databases	
6				Search Screen - Advanced	
7				Search	
8				Database - CINAHL Complete	
9					
10					
11	S74	(MH "Hepatitis, Viral,	Search modes -	Interface - EBSCOhost	Display
12		Human")	Boolean/Phrase	Research Databases	
13				Search Screen - Advanced	
14				Search	
15				Database - CINAHL Complete	
16					
17					
18	S73	(MH "Hepatitis, Chronic")	Search modes -	Interface - EBSCOhost	Display
19			Boolean/Phrase	Research Databases	
20				Search Screen - Advanced	
21				Search	
22				Database - CINAHL Complete	
23					
24					
25	S72	(MH "Hepatorenal	Search modes -	Interface - EBSCOhost	Display
26		Syndrome") OR	Boolean/Phrase	Research Databases	
27		"Hepatorenal Syndrome"		Search Screen - Advanced	
28				Search	
29				Database - CINAHL Complete	
30					
31					
32	S71	(MH "Hepatopulmonary	Search modes -	Interface - EBSCOhost	Display
33		Syndrome") OR	Boolean/Phrase	Research Databases	
34		"Hepatopulmonary		Search Screen - Advanced	
35		Syndrome"		Search	
36				Database - CINAHL Complete	
37					
38					
39	S70	(MH	Search modes -	Interface - EBSCOhost	Display
40		"Cholangiocarcinoma")	Boolean/Phrase	Research Databases	
41		OR		Search Screen - Advanced	
42		"Cholangiocarcinoma"		Search	
43				Database - CINAHL Complete	
44					
45					
46	S69	cirrhosis	Search modes -	Interface - EBSCOhost	Display
47			Boolean/Phrase	Research Databases	
48				Search Screen - Advanced	
49				Search	
50				Database - CINAHL Complete	
51					
52					
53	S68	HBV	Search modes -	Interface - EBSCOhost	Display
54			Boolean/Phrase	Research Databases	
55				Search Screen - Advanced	
56				Search	
57					
58					
59					
60					

Hepatology

This article is protected by copyright. All rights reserved.

1				Database - CINAHL Complete	
2					
3	S67	"HCV"	Search modes -	Interface - EBSCOhost	Display
4			Boolean/Phrase	Research Databases	
5				Search Screen - Advanced	
6				Search	
7				Database - CINAHL Complete	
8					
9					
10	S66	""advanced liver	Search modes -	Interface - EBSCOhost	Display
11		disease*""	Boolean/Phrase	Research Databases	
12				Search Screen - Basic Search	
13				Database - CINAHL Complete	
14					
15					
16	S65	"chronic liver disease*"	Search modes -	Interface - EBSCOhost	Display
17			Boolean/Phrase	Research Databases	
18				Search Screen - Basic Search	
19				Database - CINAHL Complete	
20					
21					
22	S64	hcc	Search modes -	Interface - EBSCOhost	Display
23			Boolean/Phrase	Research Databases	
24				Search Screen - Advanced	
25				Search	
26				Database - CINAHL Complete	
27					
28					
29	S63	""hepatocellular	Search modes -	Interface - EBSCOhost	Display
30		carcinoma""	Boolean/Phrase	Research Databases	
31				Search Screen - Advanced	
32				Search	
33				Database - CINAHL Complete	
34					
35					
36	S62	(MH "Carcinoma,	Search modes -	Interface - EBSCOhost	Display
37		Hepatocellular") OR	Boolean/Phrase	Research Databases	
38		"Carcinoma,		Search Screen - Advanced	
39		Hepatocellular"		Search	
40				Database - CINAHL Complete	
41					
42					
43	S61	((S27 OR S28 OR S29	Search modes -	Interface - EBSCOhost	1,104
44		OR S30 OR S31 OR S32	Boolean/Phrase	Research Databases	
45		OR S33 OR S34 OR S35		Search Screen - Advanced	
46		OR S36 OR S37 OR S38		Search	
47		OR S39 OR S40 OR S41		Database - CINAHL Complete	
48		OR S42 OR S43 OR S44			
49		OR S45 OR S46 OR S47			
50		OR S48 OR S49 OR S50			
51		OR S51 OR S52 OR S53			
52		OR S54 OR S55 OR S56			
53		OR S57 OR S58) AND			
54		(S26 AND S59)) AND LA			
55		english			
56					
57					
58					
59					
60					

1	S60	(S27 OR S28 OR S29	Search modes -	Interface - EBSCOhost	1,134
2		OR S30 OR S31 OR S32	Boolean/Phrase	Research Databases	
3		OR S33 OR S34 OR S35		Search Screen - Advanced	
4		OR S36 OR S37 OR S38		Search	
5		OR S39 OR S40 OR S41		Database - CINAHL Complete	
6		OR S42 OR S43 OR S44			
7		OR S45 OR S46 OR S47			
8		OR S48 OR S49 OR S50			
9		OR S51 OR S52 OR S53			
10		OR S54 OR S55 OR S56			
11		OR S57 OR S58) AND			
12		(S26 AND S59)			
13					
14					
15					
16	S59	S27 OR S28 OR S29 OR	Search modes -	Interface - EBSCOhost	176,244
17		S30 OR S31 OR S32 OR	Boolean/Phrase	Research Databases	
18		S33 OR S34 OR S35 OR		Search Screen - Advanced	
19		S36 OR S37 OR S38 OR		Search	
20		S39 OR S40 OR S41 OR		Database - CINAHL Complete	
21		S42 OR S43 OR S44 OR			
22		S45 OR S46 OR S47 OR			
23		S48 OR S49 OR S50 OR			
24		S51 OR S52 OR S53 OR			
25		S54 OR S55 OR S56 OR			
26		S57 OR S58			
27					
28					
29					
30					
31	S58	(patient n10 reported)	Search modes -	Interface - EBSCOhost	26,931
32		AND (satisfaction or	Boolean/Phrase	Research Databases	
33		outcome* or measure* or		Search Screen - Advanced	
34		"quality of life")		Search	
35				Database - CINAHL Complete	
36					
37					
38					
39	S57	""quality of life"" OR (MH	Search modes -	Interface - EBSCOhost	Display
40		"Quality of Life+")	Boolean/Phrase	Research Databases	
41				Search Screen - Advanced	
42				Search	
43				Database - CINAHL Complete	
44					
45					
46	S56	"QOL"	Search modes -	Interface - EBSCOhost	Display
47			Boolean/Phrase	Research Databases	
48				Search Screen - Advanced	
49				Search	
50				Database - CINAHL Complete	
51					
52					
53	S55	""health related quality of	Search modes -	Interface - EBSCOhost	Display
54		life""	Boolean/Phrase	Research Databases	
55				Search Screen - Advanced	
56				Search	
57				Database - CINAHL Complete	
58					
59					
60					

Manuscript

1	S54	"HRQOL"	Search modes - Boolean/Phrase	Interface - EBSCOhost Research Databases Search Screen - Advanced Search Database - CINAHL Complete	Display
2					
3					
4					
5					
6					
7					
8	S53	(MH "Outcome Assessment")	Search modes - Boolean/Phrase	Interface - EBSCOhost Research Databases Search Screen - Advanced Search Database - CINAHL Complete	Display
9					
10					
11					
12					
13					
14					
15	S52	(MH "Patient-Reported Outcomes")	Search modes - Boolean/Phrase	Interface - EBSCOhost Research Databases Search Screen - Advanced Search Database - CINAHL Complete	Display
16					
17					
18					
19					
20					
21					
22	S51	"EuroQOL-5D"	Search modes - Boolean/Phrase	Interface - EBSCOhost Research Databases Search Screen - Advanced Search Database - CINAHL Complete	Display
23					
24					
25					
26					
27					
28					
29	S50	NHP	Search modes - Boolean/Phrase	Interface - EBSCOhost Research Databases Search Screen - Advanced Search Database - CINAHL Complete	Display
30					
31					
32					
33					
34					
35					
36	S49	""nottingham health profile""	Search modes - Boolean/Phrase	Interface - EBSCOhost Research Databases Search Screen - Advanced Search Database - CINAHL Complete	Display
37					
38					
39					
40					
41					
42					
43	S48	""multi-dimensional fatigue inventory""	Search modes - Boolean/Phrase	Interface - EBSCOhost Research Databases Search Screen - Advanced Search Database - CINAHL Complete	Display
44					
45					
46					
47					
48					
49					
50	S47	"sf-6d"	Search modes - Boolean/Phrase	Interface - EBSCOhost Research Databases Search Screen - Advanced Search Database - CINAHL Complete	Display
51					
52					
53					
54					
55					
56					
57					
58					
59					
60					

1	S46	"facit-f"	Search modes - Boolean/Phrase	Interface - EBSCOhost Research Databases Search Screen - Advanced Search Database - CINAHL Complete	Display
2					
3					
4					
5					
6					
7					
8	S45	"mfsi-sf"	Search modes - Boolean/Phrase	Interface - EBSCOhost Research Databases Search Screen - Basic Search Database - CINAHL Complete	Display
9					
10					
11					
12					
13					
14	S44	""sickness impact profile""	Search modes - Boolean/Phrase	Interface - EBSCOhost Research Databases Search Screen - Basic Search Database - CINAHL Complete	Display
15					
16					
17					
18					
19					
20	S43	(MH "Sickness Impact Profile")	Search modes - Boolean/Phrase	Interface - EBSCOhost Research Databases Search Screen - Basic Search Database - CINAHL Complete	Display
21					
22					
23					
24					
25					
26	S42	""liver disease symptom index""	Search modes - Boolean/Phrase	Interface - EBSCOhost Research Databases Search Screen - Basic Search Database - CINAHL Complete	Display
27					
28					
29					
30					
31					
32	S41	"LDSI"	Search modes - Boolean/Phrase	Interface - EBSCOhost Research Databases Search Screen - Basic Search Database - CINAHL Complete	Display
33					
34					
35					
36					
37					
38	S40	sf36 OR sf-36	Search modes - Boolean/Phrase	Interface - EBSCOhost Research Databases Search Screen - Basic Search Database - CINAHL Complete	Display
39					
40					
41					
42					
43					
44	S39	""short form 36""	Search modes - Boolean/Phrase	Interface - EBSCOhost Research Databases Search Screen - Basic Search Database - CINAHL Complete	Display
45					
46					
47					
48					
49					
50	S38	(MH "Short Form-36 Health Survey (SF-36)")	Search modes - Boolean/Phrase	Interface - EBSCOhost Research Databases Search Screen - Basic Search Database - CINAHL Complete	Display
51					
52					
53					
54					
55	S37	"short form 8"	Search modes - Boolean/Phrase	Interface - EBSCOhost Research Databases Search Screen - Basic Search	Display
56					
57					
58					
59					
60					

1
2
3
4
5
6
7
8
9
10
11
12
13
14
15
16
17
18
19
20
21
22
23
24
25
26
27
28
29
30
31
32
33
34
35
36
37
38
39
40
41
42
43
44
45
46
47
48
49
50
51
52
53
54
55
56
57
58
59
60

Author Manuscript

				Database - CINAHL Complete	
S36	sf16 or sf-16	Search modes - Boolean/Phrase	Interface - EBSCOhost Research Databases Search Screen - Basic Search Database - CINAHL Complete	Display	
S35	""short form 16""	Search modes - Boolean/Phrase	Interface - EBSCOhost Research Databases Search Screen - Basic Search Database - CINAHL Complete	Display	
S34	sf8 or sf-8	Search modes - Boolean/Phrase	Interface - EBSCOhost Research Databases Search Screen - Basic Search Database - CINAHL Complete	Display	
S33	""short form 8""	Search modes - Boolean/Phrase	Interface - EBSCOhost Research Databases Search Screen - Basic Search Database - CINAHL Complete	Display	
S32	WPAI	Search modes - Boolean/Phrase	Interface - EBSCOhost Research Databases Search Screen - Basic Search Database - CINAHL Complete	Display	
S31	""work productivity and impairment""	Search modes - Boolean/Phrase	Interface - EBSCOhost Research Databases Search Screen - Basic Search Database - CINAHL Complete	Display	
S30	""liver disease quality of life""	Search modes - Boolean/Phrase	Interface - EBSCOhost Research Databases Search Screen - Basic Search Database - CINAHL Complete	Display	
S29	"LDQOL"	Search modes - Boolean/Phrase	Interface - EBSCOhost Research Databases Search Screen - Basic Search Database - CINAHL Complete	Display	
S28	"CLDQ"	Search modes - Boolean/Phrase	Interface - EBSCOhost Research Databases Search Screen - Basic Search Database - CINAHL Complete	Display	
S27	"chronic liver disease questionnaire"	Search modes - Boolean/Phrase	Interface - EBSCOhost Research Databases Search Screen - Basic Search	Display	

Database - CINAHL Complete

1				Database - CINAHL Complete	
2					
3	S26	(S1 OR S2 OR S3 OR S4	Search modes -	Interface - EBSCOhost	Display
4		OR S5 OR S6 OR S7 OR	Boolean/Phrase	Research Databases	
5		S8 OR S9 OR S10 OR		Search Screen - Advanced	
6		S11 OR S12 OR S13 OR		Search	
7		S14 OR S15 OR S16 OR		Database - CINAHL Complete	
8		S17 OR S18 OR S19 OR			
9		S20 OR S21 OR S22 OR			
10		S23 OR S24 OR S25)			
11					
12					
13	S25	"liver cirrhosis"	Search modes -	Interface - EBSCOhost	Display
14			Boolean/Phrase	Research Databases	
15				Search Screen - Advanced	
16				Search	
17				Database - CINAHL Complete	
18					
19					
20	S24	(MH "Liver Cirrhosis+")	Search modes -	Interface - EBSCOhost	Display
21			Boolean/Phrase	Research Databases	
22				Search Screen - Advanced	
23				Search	
24				Database - CINAHL Complete	
25					
26					
27	S23	"hepatitis c"	Search modes -	Interface - EBSCOhost	Display
28			Boolean/Phrase	Research Databases	
29				Search Screen - Advanced	
30				Search	
31				Database - CINAHL Complete	
32					
33					
34	S22	"hepatitis b"	Search modes -	Interface - EBSCOhost	Display
35			Boolean/Phrase	Research Databases	
36				Search Screen - Advanced	
37				Search	
38				Database - CINAHL Complete	
39					
40					
41	S21	(MH "Hepatitis B+")	Search modes -	Interface - EBSCOhost	Display
42			Boolean/Phrase	Research Databases	
43				Search Screen - Advanced	
44				Search	
45				Database - CINAHL Complete	
46					
47					
48	S20	(MH "Hepatitis C+")	Search modes -	Interface - EBSCOhost	Display
49			Boolean/Phrase	Research Databases	
50				Search Screen - Advanced	
51				Search	
52				Database - CINAHL Complete	
53					
54					
55	S19	(MH "Liver Diseases,	Search modes -	Interface - EBSCOhost	Display
56		Alcoholic+")	Boolean/Phrase	Research Databases	
57					
58					
59					
60					

Hepatology

This article is protected by copyright. All rights reserved.

1
2
3
4
5
6
7
8
9
10
11
12
13
14
15
16
17
18
19
20
21
22
23
24
25
26
27
28
29
30
31
32
33
34
35
36
37
38
39
40
41
42
43
44
45
46
47
48
49
50
51
52
53
54
55
56
57
58
59
60

Author Manuscript

			Search Screen - Advanced Search Database - CINAHL Complete	
S18	"liver disease*" AND alcoholic	Search modes - Boolean/Phrase	Interface - EBSCOhost Research Databases Search Screen - Advanced Search Database - CINAHL Complete	Display
S17	"fatty liver" AND (non-alcoholic or nonalcoholic)	Search modes - Boolean/Phrase	Interface - EBSCOhost Research Databases Search Screen - Advanced Search Database - CINAHL Complete	Display
S16	(MH "Nonalcoholic Fatty Liver Disease")	Search modes - Boolean/Phrase	Interface - EBSCOhost Research Databases Search Screen - Advanced Search Database - CINAHL Complete	Display
S15	"viral hepatitis"	Search modes - Boolean/Phrase	Interface - EBSCOhost Research Databases Search Screen - Advanced Search Database - CINAHL Complete	Display
S14	"chronic hepatitis"	Search modes - Boolean/Phrase	Interface - EBSCOhost Research Databases Search Screen - Advanced Search Database - CINAHL Complete	Display
S13	(MH "Hepatitis, Viral, Human")	Search modes - Boolean/Phrase	Interface - EBSCOhost Research Databases Search Screen - Advanced Search Database - CINAHL Complete	Display
S12	(MH "Hepatitis, Chronic")	Search modes - Boolean/Phrase	Interface - EBSCOhost Research Databases Search Screen - Advanced Search Database - CINAHL Complete	Display
S11	(MH "Hepatorenal Syndrome") OR "Hepatorenal Syndrome"	Search modes - Boolean/Phrase	Interface - EBSCOhost Research Databases Search Screen - Advanced	Display

1			Search	
2			Database - CINAHL Complete	
3				
4	S10	(MH "Hepatopulmonary Syndrome") OR	Search modes - Boolean/Phrase	Interface - EBSCOhost Display
5		"Hepatopulmonary Syndrome"		Research Databases
6				Search Screen - Advanced
7				Search
8				Database - CINAHL Complete
9				
10				
11	S9	(MH "Cholangiocarcinoma")	Search modes - Boolean/Phrase	Interface - EBSCOhost Display
12		OR		Research Databases
13		"Cholangiocarcinoma"		Search Screen - Advanced
14				Search
15				Database - CINAHL Complete
16				
17				
18	S8	cirrhosis	Search modes - Boolean/Phrase	Interface - EBSCOhost Display
19				Research Databases
20				Search Screen - Advanced
21				Search
22				Database - CINAHL Complete
23				
24				
25	S7	HBV	Search modes - Boolean/Phrase	Interface - EBSCOhost Display
26				Research Databases
27				Search Screen - Advanced
28				Search
29				Database - CINAHL Complete
30				
31				
32	S6	"HCV"	Search modes - Boolean/Phrase	Interface - EBSCOhost Display
33				Research Databases
34				Search Screen - Advanced
35				Search
36				Database - CINAHL Complete
37				
38				
39	S5	""advanced liver disease""	Search modes - Boolean/Phrase	Interface - EBSCOhost Display
40				Research Databases
41				Search Screen - Basic Search
42				Database - CINAHL Complete
43				
44				
45	S4	"chronic liver disease"	Search modes - Boolean/Phrase	Interface - EBSCOhost Display
46				Research Databases
47				Search Screen - Basic Search
48				Database - CINAHL Complete
49				
50				
51	S3	hcc	Search modes - Boolean/Phrase	Interface - EBSCOhost Display
52				Research Databases
53				Search Screen - Advanced
54				Search
55				Database - CINAHL Complete
56				
57				
58				
59				
60				

1
2
3
4
5
6
7
8
9
10
11
12
13
14
15
16
17
18
19
20
21
22
23
24
25
26
27
28
29
30
31
32
33
34
35
36
37
38
39
40
41
42
43
44
45
46
47
48
49
50
51
52
53
54
55
56
57
58
59
60

Manuscript
Author Manuscript

S2	""hepatocellular carcinoma""	Search modes - Boolean/Phrase	Interface - EBSCOhost Research Databases Search Screen - Advanced Search Database - CINAHL Complete	Display
S1	(MH "Carcinoma, Hepatocellular") OR "Carcinoma, Hepatocellular"	Search modes - Boolean/Phrase	Interface - EBSCOhost Research Databases Search Screen - Advanced Search Database - CINAHL Complete	Display



Embase Session Results

No.	Query	Results
#78	#77 AND [embase]/lim NOT [medline]/lim	1,367
#77	#45 AND #76 AND [english]/lim	2,480
#76	#46 OR #47 OR #48 OR #49 OR #50 OR #51 OR #52 OR #53 OR #54 OR #55 OR #56 OR #57 OR #58 OR #59 OR #60 OR #61 OR #62 OR #63 OR #64 OR #65 OR #66 OR #67 OR #68 OR #71 OR #74 OR #75	533,520
#75	'alcohol liver disease'/exp	21,712
#74	#72 AND #73	25,228
#73	'liver disease*'	218,250
#72	alcoholic	76,230
#71	#69 AND #70	12,540
#70	'fatty liver'	55,751
#69	'non alcoholic'	15,540
#68	'nonalcoholic fatty liver'/exp	24,771
#67	'viral hepatitis'	31,106
#66	'chronic hepatitis'	71,312
#65	'virus hepatitis'/de	22,173
#64	'chronic hepatitis'/de	26,907
#63	'hepatorenal syndrome'/exp	4,306
#62	'hepatopulmonary syndrome'	1,711
#61	'hepatopulmonary syndrome'/exp	1,539
#60	cholangiocarcinoma	14,164
#59	'bile duct carcinoma'/exp	20,583
#58	cirrhosis	172,202
#57	'liver cirrhosis'/exp	149,194
#56	hbv	54,704
#55	hcv	77,990
#54	'hepatitis b'	137,857
#53	'hepatitis b'/exp	85,830
#52	'hepatitis c'	124,084
#51	'hepatitis c'/exp	93,426
#50	'advanced liver disease*':ti,ab	2,713
#49	'chronic liver disease*':ti,ab	24,450
#48	hcc	62,613
#47	'hepatocellular carcinoma'	94,416
#46	'liver cell carcinoma'/exp OR 'liver cell carcinoma'	127,949
#45	#1 OR #2 OR #3 OR #4 OR #5 OR #6 OR #7 OR #8 OR #9 OR #10 OR #11 OR #12 OR #13 OR #14 OR #15 OR #16 OR #17 OR #18 OR #19 OR #20 OR #21 OR #22 OR #23 OR #24 OR #25 OR #26 OR #27 OR #28 OR #29 OR #30 OR #31 OR #32 OR #33 OR #34 OR #35 OR #42 OR #43 OR #44	189,231
#44	'quality of life'/mj	76,693
#43	'outcome assessment'/mj	16,320
#42	#36 AND #41	40,747
#41	#37 OR #38 OR #39 OR #40	5,070,192
#40	'quality of life'	414,220
#39	measure*:ab,ti	3,479,388
#38	outcome*:ab,ti	1,765,328

Embase®

#35	qol	50,402
#34	'health related quality of life'	44,542
#33	hrqol	17,561
#32	'patient-reported outcome'/exp	2,887
#31	'patient reported outcome measure'/exp	120
#30	'euroqol 5d'	1,498
#29	'euroqol 5d questionnaire'/exp	41
#28	nhp	3,289
#27	'nottingham health profile'/exp	322
#26	'multi-dimensional fatigue inventory'	20
#25	'short form 6d'/exp	131
#24	'sf 6d'	1,020
#23	'facit f'	465
#22	'mfsi sf'	67
#21	'sickness impact profile'/exp	2,038
#20	ldsi	20
#19	'liver disease symptom index'	17
#18	'short form 36'/exp	22,249
#17	sf36	2,542
#16	'sf36'	26,162
#15	sf16	5
#14	'sf 16'	43
#13	'short form 16'	6
#12	'sf 8'	525
#11	sf8	70
#10	'short form 8'	340
#9	'short form 8'/exp	287
#8	wpai	922
#7	'work productivity and activity impairment'	920
#6	'work productivity and activity impairment questionnaire'/exp	61
#5	'liver disease quality of life'	43
#4	ldqol	35
#3	cldq	205
#2	'chronic liver disease questionnaire'	192
#1	'chronic liver disease questionnaire'/exp	36

ELSEVIER

© 2017 RELX Intellectual Properties SA. All rights reserved.

Embase, RELX Group and the RE symbol are trade marks of RELX Intellectual Properties SA, used under license.



Monday, May 01, 2017 10:06:10 AM

#	Query	Limiters/Expanders	Last Run Via	Results
S88	(S61 AND S87) AND LA english)	Search modes - Boolean/Phrase	Interface - EBSCOhost Research Databases Search Screen - Advanced Search Database - PsycINFO	320
S87	S62 OR S63 OR S64 OR S65 OR S66 OR S67 OR S68 OR S69 OR S70 OR S71 OR S72 OR S73 OR S74 OR S75 OR S76 OR S77 OR S78 OR S79 OR S80 OR S81 OR S82 OR S83 OR S84 OR S85 OR S86	Search modes - Boolean/Phrase	Interface - EBSCOhost Research Databases Search Screen - Advanced Search Database - PsycINFO	Display
S86	(patient n10 reported) AND (outcome* or satisfaction* or measure* or "quality of life")	Search modes - Boolean/Phrase	Interface - EBSCOhost Research Databases Search Screen - Advanced Search Database - PsycINFO	Display
S85	"health related quality of life"	Search modes - Boolean/Phrase	Interface - EBSCOhost Research Databases Search Screen - Advanced Search Database - PsycINFO	Display
S84	QOL	Search modes - Boolean/Phrase	Interface - EBSCOhost Research Databases Search Screen - Advanced Search Database - PsycINFO	Display
S83	HRQOL	Search modes - Boolean/Phrase	Interface - EBSCOhost Research Databases Search Screen - Advanced Search Database - PsycINFO	Display
S82	DE "Quality of Life"	Search modes - Boolean/Phrase	Interface - EBSCOhost Research Databases	Display

Hepatology

This article is protected by copyright. All rights reserved.

1
2
3
4
5
6
7
8
9
10
11
12
13
14
15
16
17
18
19
20
21
22
23
24
25
26
27
28
29
30
31
32
33
34
35
36
37
38
39
40
41
42
43
44
45
46
47
48
49
50
51
52
53
54
55
56
57
58
59
60

Author Manuscript

			Search Screen - Advanced Search	
			Database - PsycINFO	
S81	"Patient Outcome Assessment"	Search modes - Boolean/Phrase	Interface - EBSCOhost Research Databases Search Screen - Advanced Search Database - PsycINFO	Display
S80	EuroQOL-5D	Search modes - Boolean/Phrase	Interface - EBSCOhost Research Databases Search Screen - Advanced Search Database - PsycINFO	Display
S79	"nottingham health profile" or NHP	Search modes - Boolean/Phrase	Interface - EBSCOhost Research Databases Search Screen - Advanced Search Database - PsycINFO	Display
S78	"multidimensional fatigue inventory"	Search modes - Boolean/Phrase	Interface - EBSCOhost Research Databases Search Screen - Advanced Search Database - PsycINFO	Display
S77	"multi-dimensional fatigue inventory"	Search modes - Boolean/Phrase	Interface - EBSCOhost Research Databases Search Screen - Advanced Search Database - PsycINFO	Display
S76	sf-6d	Search modes - Boolean/Phrase	Interface - EBSCOhost Research Databases Search Screen - Advanced Search Database - PsycINFO	Display
S75	facit-f	Search modes - Boolean/Phrase	Interface - EBSCOhost Research Databases Search Screen - Advanced Search Database - PsycINFO	Display
S74	mfsi-sf	Search modes - Boolean/Phrase	Interface - EBSCOhost Research Databases Search Screen - Advanced	Display

1			Search		
2			Database - PsycINFO		
3					
4	S73	"sickness impact profile"	Search modes - Boolean/Phrase	Interface - EBSCOhost Research Databases Search Screen - Advanced Search Database - PsycINFO	Display
5					
6					
7					
8					
9					
10					
11	S72	LDSI	Search modes - Boolean/Phrase	Interface - EBSCOhost Research Databases Search Screen - Advanced Search Database - PsycINFO	Display
12					
13					
14					
15					
16					
17					
18	S71	"liver disease symptom index"	Search modes - Boolean/Phrase	Interface - EBSCOhost Research Databases Search Screen - Advanced Search Database - PsycINFO	Display
19					
20					
21					
22					
23					
24					
25	S70	"short form 36" or sf-36 or sf36	Search modes - Boolean/Phrase	Interface - EBSCOhost Research Databases Search Screen - Advanced Search Database - PsycINFO	Display
26					
27					
28					
29					
30					
31					
32	S69	"short form 16" or sf-16 or sf16	Search modes - Boolean/Phrase	Interface - EBSCOhost Research Databases Search Screen - Advanced Search Database - PsycINFO	Display
33					
34					
35					
36					
37					
38					
39	S68	"short form 8" or sf8 or sf-8	Search modes - Boolean/Phrase	Interface - EBSCOhost Research Databases Search Screen - Advanced Search Database - PsycINFO	Display
40					
41					
42					
43					
44					
45					
46					
47	S67	WPAI	Search modes - Boolean/Phrase	Interface - EBSCOhost Research Databases Search Screen - Advanced Search Database - PsycINFO	Display
48					
49					
50					
51					
52					
53					
54	S66	"work productivity and activity impairment"	Search modes - Boolean/Phrase	Interface - EBSCOhost Research Databases Search Screen - Advanced Search	Display
55					
56					
57					
58					
59					

1				Database - PsycINFO	
2					
3	S65	"liver disease quality of	Search modes -	Interface - EBSCOhost	Display
4		life"	Boolean/Phrase	Research Databases	
5				Search Screen - Advanced	
6				Search	
7				Database - PsycINFO	
8					
9	S64	LDQOL	Search modes -	Interface - EBSCOhost	Display
10			Boolean/Phrase	Research Databases	
11				Search Screen - Advanced	
12				Search	
13				Database - PsycINFO	
14					
15	S63	CLDQ	Search modes -	Interface - EBSCOhost	Display
16			Boolean/Phrase	Research Databases	
17				Search Screen - Advanced	
18				Search	
19				Database - PsycINFO	
20					
21	S62	"chronic liver disease	Search modes -	Interface - EBSCOhost	Display
22		questionnaire"	Boolean/Phrase	Research Databases	
23				Search Screen - Advanced	
24				Search	
25				Database - PsycINFO	
26					
27	S61	(S45 OR S46 OR S47	Search modes -	Interface - EBSCOhost	Display
28		OR S48 OR S49 OR S50	Boolean/Phrase	Research Databases	
29		OR S51 OR S52 OR S53		Search Screen - Advanced	
30		OR S54 OR S55 OR S56		Search	
31		OR S57 OR S58 OR S59		Database - PsycINFO	
32		OR S60)			
33					
34	S60	"liver disease**"	Search modes -	Interface - EBSCOhost	Display
35			Boolean/Phrase	Research Databases	
36				Search Screen - Advanced	
37				Search	
38				Database - PsycINFO	
39					
40	S59	(non-alcoholic or	Search modes -	Interface - EBSCOhost	Display
41		nonalcoholic) AND "fatty	Boolean/Phrase	Research Databases	
42		liver"		Search Screen - Advanced	
43				Search	
44				Database - PsycINFO	
45					
46	S58	"viral hepatitis"	Search modes -	Interface - EBSCOhost	Display
47			Boolean/Phrase	Research Databases	
48				Search Screen - Advanced	
49				Search	
50				Database - PsycINFO	
51					
52					
53					
54					
55					
56					
57					
58					
59					
60					

1				Database - PsycINFO	
2					
3	S57	"chronic hepatitis"	Search modes -	Interface - EBSCOhost	Display
4			Boolean/Phrase	Research Databases	
5				Search Screen - Advanced	
6				Search	
7				Database - PsycINFO	
8					
9	S56	"Hepatorenal Syndrome"	Search modes -	Interface - EBSCOhost	Display
10			Boolean/Phrase	Research Databases	
11				Search Screen - Advanced	
12				Search	
13				Database - PsycINFO	
14					
15	S55	"Hepatopulmonary	Search modes -	Interface - EBSCOhost	Display
16		Syndrome"	Boolean/Phrase	Research Databases	
17				Search Screen - Advanced	
18				Search	
19				Database - PsycINFO	
20					
21	S54	Cholangiocarcinoma	Search modes -	Interface - EBSCOhost	Display
22			Boolean/Phrase	Research Databases	
23				Search Screen - Advanced	
24				Search	
25				Database - PsycINFO	
26					
27	S53	cirrhosis	Search modes -	Interface - EBSCOhost	Display
28			Boolean/Phrase	Research Databases	
29				Search Screen - Advanced	
30				Search	
31				Database - PsycINFO	
32					
33	S52	HBV	Search modes -	Interface - EBSCOhost	Display
34			Boolean/Phrase	Research Databases	
35				Search Screen - Advanced	
36				Search	
37				Database - PsycINFO	
38					
39	S51	HCV	Search modes -	Interface - EBSCOhost	Display
40			Boolean/Phrase	Research Databases	
41				Search Screen - Advanced	
42				Search	
43				Database - PsycINFO	
44					
45	S50	"hepatitis b"	Search modes -	Interface - EBSCOhost	Display
46			Boolean/Phrase	Research Databases	
47				Search Screen - Advanced	
48				Search	
49				Database - PsycINFO	
50					
51					
52					
53					
54					
55					
56					
57					
58					
59					
60					

1	S49	"hepatitis c"	Search modes - Boolean/Phrase	Interface - EBSCOhost Research Databases Search Screen - Advanced Search Database - PsycINFO	Display
2					
3					
4					
5					
6					
7	S48	DE "Hepatitis"	Search modes - Boolean/Phrase	Interface - EBSCOhost Research Databases Search Screen - Advanced Search Database - PsycINFO	Display
8					
9					
10					
11					
12					
13					
14	S47	DE "Cirrhosis (Liver)"	Search modes - Boolean/Phrase	Interface - EBSCOhost Research Databases Search Screen - Advanced Search Database - PsycINFO	Display
15					
16					
17					
18					
19					
20					
21					
22	S46	hcc	Search modes - Boolean/Phrase	Interface - EBSCOhost Research Databases Search Screen - Advanced Search Database - PsycINFO	Display
23					
24					
25					
26					
27					
28					
29	S45	"hepatocellular Carcinoma"	Search modes - Boolean/Phrase	Interface - EBSCOhost Research Databases Search Screen - Advanced Search Database - PsycINFO	Display
30					
31					
32					
33					
34					
35					
36	S44	(S17 AND S43) AND LA english)	Search modes - Boolean/Phrase	Interface - EBSCOhost Research Databases Search Screen - Advanced Search Database - PsycINFO	320
37					
38					
39					
40					
41					
42					
43	S43	S18 OR S19 OR S20 OR S21 OR S22 OR S23 OR S24 OR S25 OR S26 OR S27 OR S28 OR S29 OR S30 OR S31 OR S32 OR S33 OR S34 OR S35 OR S36 OR S37 OR S38 OR S39 OR S40 OR S41 OR S42	Search modes - Boolean/Phrase	Interface - EBSCOhost Research Databases Search Screen - Advanced Search Database - PsycINFO	66,002
44					
45					
46					
47					
48					
49					
50					
51					
52					
53					
54					
55	S42	(patient n10 reported) AND (outcome* or satisfaction* or measure*	Search modes - Boolean/Phrase	Interface - EBSCOhost Research Databases Search Screen - Advanced	Display
56					
57					
58					
59					
60					

1		or "quality of life")		Search	
2				Database - PsycINFO	
3					
4	S41	"health related quality of life"	Search modes - Boolean/Phrase	Interface - EBSCOhost Research Databases Search Screen - Advanced Search Database - PsycINFO	Display
5					
6					
7					
8					
9					
10					
11	S40	QOL	Search modes - Boolean/Phrase	Interface - EBSCOhost Research Databases Search Screen - Advanced Search Database - PsycINFO	Display
12					
13					
14					
15					
16					
17					
18	S39	HRQOL	Search modes - Boolean/Phrase	Interface - EBSCOhost Research Databases Search Screen - Advanced Search Database - PsycINFO	Display
19					
20					
21					
22					
23					
24					
25	S38	DE "Quality of Life"	Search modes - Boolean/Phrase	Interface - EBSCOhost Research Databases Search Screen - Advanced Search Database - PsycINFO	Display
26					
27					
28					
29					
30					
31					
32	S37	"Patient Outcome Assessment"	Search modes - Boolean/Phrase	Interface - EBSCOhost Research Databases Search Screen - Advanced Search Database - PsycINFO	Display
33					
34					
35					
36					
37					
38					
39	S36	EuroQOL-5D	Search modes - Boolean/Phrase	Interface - EBSCOhost Research Databases Search Screen - Advanced Search Database - PsycINFO	Display
40					
41					
42					
43					
44					
45					
46					
47	S35	"nottingham health profile" or NHP	Search modes - Boolean/Phrase	Interface - EBSCOhost Research Databases Search Screen - Advanced Search Database - PsycINFO	Display
48					
49					
50					
51					
52					
53					
54	S34	"multidimensional fatigue inventory"	Search modes - Boolean/Phrase	Interface - EBSCOhost Research Databases Search Screen - Advanced Search Database - PsycINFO	Display
55					
56					
57					
58					
59					
60					

1
2
3
4
5
6
7
8
9
10
11
12
13
14
15
16
17
18
19
20
21
22
23
24
25
26
27
28
29
30
31
32
33
34
35
36
37
38
39
40
41
42
43
44
45
46
47
48
49
50
51
52
53
54
55
56
57
58
59
60

Author Manuscript

			Database - PsycINFO	
S33	"multi-dimensional fatigue inventory"	Search modes - Boolean/Phrase	Interface - EBSCOhost Research Databases Search Screen - Advanced Search Database - PsycINFO	Display
S32	sf-6d	Search modes - Boolean/Phrase	Interface - EBSCOhost Research Databases Search Screen - Advanced Search Database - PsycINFO	Display
S31	facit-f	Search modes - Boolean/Phrase	Interface - EBSCOhost Research Databases Search Screen - Advanced Search Database - PsycINFO	Display
S30	mfsi-sf	Search modes - Boolean/Phrase	Interface - EBSCOhost Research Databases Search Screen - Advanced Search Database - PsycINFO	Display
S29	"sickness impact profile"	Search modes - Boolean/Phrase	Interface - EBSCOhost Research Databases Search Screen - Advanced Search Database - PsycINFO	Display
S28	LDSI	Search modes - Boolean/Phrase	Interface - EBSCOhost Research Databases Search Screen - Advanced Search Database - PsycINFO	Display
S27	"liver disease symptom index"	Search modes - Boolean/Phrase	Interface - EBSCOhost Research Databases Search Screen - Advanced Search Database - PsycINFO	Display
S26	"short form 36" or sf-36 or sf36	Search modes - Boolean/Phrase	Interface - EBSCOhost Research Databases Search Screen - Advanced Search Database - PsycINFO	Display

1	S25	"short form 16" or sf-16 or sf16	Search modes - Boolean/Phrase	Interface - EBSCOhost Research Databases Search Screen - Advanced Search Database - PsycINFO	Display
2					
3					
4					
5					
6					
7	S24	"short form 8" or sf8 or sf-8	Search modes - Boolean/Phrase	Interface - EBSCOhost Research Databases Search Screen - Advanced Search Database - PsycINFO	Display
8					
9					
10					
11					
12					
13					
14	S23	WPAI	Search modes - Boolean/Phrase	Interface - EBSCOhost Research Databases Search Screen - Advanced Search Database - PsycINFO	Display
15					
16					
17					
18					
19					
20					
21					
22	S22	"work productivity and activity impairment"	Search modes - Boolean/Phrase	Interface - EBSCOhost Research Databases Search Screen - Advanced Search Database - PsycINFO	Display
23					
24					
25					
26					
27					
28					
29	S21	"liver disease quality of life"	Search modes - Boolean/Phrase	Interface - EBSCOhost Research Databases Search Screen - Advanced Search Database - PsycINFO	Display
30					
31					
32					
33					
34					
35					
36	S20	LDQOL	Search modes - Boolean/Phrase	Interface - EBSCOhost Research Databases Search Screen - Advanced Search Database - PsycINFO	Display
37					
38					
39					
40					
41					
42					
43	S19	CLDQ	Search modes - Boolean/Phrase	Interface - EBSCOhost Research Databases Search Screen - Advanced Search Database - PsycINFO	Display
44					
45					
46					
47					
48					
49					
50	S18	"chronic liver disease questionnaire"	Search modes - Boolean/Phrase	Interface - EBSCOhost Research Databases Search Screen - Advanced Search Database - PsycINFO	Display
51					
52					
53					
54					
55					
56					
57					
58					
59					
60					

1	S17	(S1 OR S2 OR S3 OR S4	Search modes -	Interface - EBSCOhost	Display
2		OR S5 OR S6 OR S7 OR	Boolean/Phrase	Research Databases	
3		S8 OR S9 OR S10 OR		Search Screen - Advanced	
4		S11 OR S12 OR S13 OR		Search	
5		S14 OR S15 OR S16)		Database - PsycINFO	
6					
7	S16	"liver disease**	Search modes -	Interface - EBSCOhost	Display
8			Boolean/Phrase	Research Databases	
9				Search Screen - Advanced	
10				Search	
11				Database - PsycINFO	
12					
13					
14	S15	(non-alcoholic or	Search modes -	Interface - EBSCOhost	Display
15		nonalcoholic) AND "fatty	Boolean/Phrase	Research Databases	
16		liver"		Search Screen - Advanced	
17				Search	
18				Database - PsycINFO	
19					
20					
21					
22	S14	"viral hepatitis"	Search modes -	Interface - EBSCOhost	Display
23			Boolean/Phrase	Research Databases	
24				Search Screen - Advanced	
25				Search	
26				Database - PsycINFO	
27					
28					
29	S13	"chronic hepatitis"	Search modes -	Interface - EBSCOhost	Display
30			Boolean/Phrase	Research Databases	
31				Search Screen - Advanced	
32				Search	
33				Database - PsycINFO	
34					
35					
36	S12	"Hepatorenal Syndrome"	Search modes -	Interface - EBSCOhost	Display
37			Boolean/Phrase	Research Databases	
38				Search Screen - Advanced	
39				Search	
40				Database - PsycINFO	
41					
42					
43	S11	"Hepatopulmonary	Search modes -	Interface - EBSCOhost	Display
44		Syndrome"	Boolean/Phrase	Research Databases	
45				Search Screen - Advanced	
46				Search	
47				Database - PsycINFO	
48					
49					
50	S10	Cholangiocarcinoma	Search modes -	Interface - EBSCOhost	Display
51			Boolean/Phrase	Research Databases	
52				Search Screen - Advanced	
53				Search	
54				Database - PsycINFO	
55					
56					
57					
58					
59					
60					

1	S9	cirrhosis	Search modes - Boolean/Phrase	Interface - EBSCOhost Research Databases Search Screen - Advanced Search Database - PsycINFO	Display
2					
3					
4					
5					
6					
7	S8	HBV	Search modes - Boolean/Phrase	Interface - EBSCOhost Research Databases Search Screen - Advanced Search Database - PsycINFO	Display
8					
9					
10					
11					
12					
13					
14	S7	HCV	Search modes - Boolean/Phrase	Interface - EBSCOhost Research Databases Search Screen - Advanced Search Database - PsycINFO	Display
15					
16					
17					
18					
19					
20					
21					
22	S6	"hepatitis b"	Search modes - Boolean/Phrase	Interface - EBSCOhost Research Databases Search Screen - Advanced Search Database - PsycINFO	Display
23					
24					
25					
26					
27					
28					
29	S5	"hepatitis c"	Search modes - Boolean/Phrase	Interface - EBSCOhost Research Databases Search Screen - Advanced Search Database - PsycINFO	Display
30					
31					
32					
33					
34					
35					
36	S4	DE "Hepatitis"	Search modes - Boolean/Phrase	Interface - EBSCOhost Research Databases Search Screen - Advanced Search Database - PsycINFO	Display
37					
38					
39					
40					
41					
42					
43	S3	DE "Cirrhosis (Liver)"	Search modes - Boolean/Phrase	Interface - EBSCOhost Research Databases Search Screen - Advanced Search Database - PsycINFO	Display
44					
45					
46					
47					
48					
49					
50	S2	hcc	Search modes - Boolean/Phrase	Interface - EBSCOhost Research Databases Search Screen - Advanced Search Database - PsycINFO	Display
51					
52					
53					
54					
55					
56					
57					
58					
59					
60					

1	S1	"hepatocellular Carcinoma"	Search modes - Boolean/Phrase	Interface - EBSCOhost Research Databases Search Screen - Advanced Search Database - PsycINFO	Display
---	----	-------------------------------	----------------------------------	--	---------

Author Manuscript

1
2
3
4
5
6
7
8
9
10
11
12
13
14
15
16
17
18
19
20
21
22
23
24
25
26
27
28
29
30
31
32
33
34
35
36
37
38
39
40
41
42
43
44
45
46
47
48
49
50
51
52
53
54
55
56
57
58
59
60



Monday, May 01, 2017 10:06:10 AM

#	Query	Limiters/Expanders	Last Run Via	Results
S88	(S61 AND S87) AND LA english)	Search modes - Boolean/Phrase	Interface - EBSCOhost Research Databases Search Screen - Advanced Search Database - PsycINFO	320
S87	S62 OR S63 OR S64 OR S65 OR S66 OR S67 OR S68 OR S69 OR S70 OR S71 OR S72 OR S73 OR S74 OR S75 OR S76 OR S77 OR S78 OR S79 OR S80 OR S81 OR S82 OR S83 OR S84 OR S85 OR S86	Search modes - Boolean/Phrase	Interface - EBSCOhost Research Databases Search Screen - Advanced Search Database - PsycINFO	Display
S86	(patient n10 reported) AND (outcome* or satisfaction* or measure* or "quality of life")	Search modes - Boolean/Phrase	Interface - EBSCOhost Research Databases Search Screen - Advanced Search Database - PsycINFO	Display
S85	"health related quality of life"	Search modes - Boolean/Phrase	Interface - EBSCOhost Research Databases Search Screen - Advanced Search Database - PsycINFO	Display
S84	QOL	Search modes - Boolean/Phrase	Interface - EBSCOhost Research Databases Search Screen - Advanced Search Database - PsycINFO	Display
S83	HRQOL	Search modes - Boolean/Phrase	Interface - EBSCOhost Research Databases Search Screen - Advanced Search Database - PsycINFO	Display
S82	DE "Quality of Life"	Search modes - Boolean/Phrase	Interface - EBSCOhost Research Databases	Display

Hepatology

This article is protected by copyright. All rights reserved.

1
2
3
4
5
6
7
8
9
10
11
12
13
14
15
16
17
18
19
20
21
22
23
24
25
26
27
28
29
30
31
32
33
34
35
36
37
38
39
40
41
42
43
44
45
46
47
48
49
50
51
52
53
54
55
56
57
58
59
60

Author Manuscript

			Search Screen - Advanced Search	
			Database - PsycINFO	
S81	"Patient Outcome Assessment"	Search modes - Boolean/Phrase	Interface - EBSCOhost Research Databases Search Screen - Advanced Search Database - PsycINFO	Display
S80	EuroQOL-5D	Search modes - Boolean/Phrase	Interface - EBSCOhost Research Databases Search Screen - Advanced Search Database - PsycINFO	Display
S79	"nottingham health profile" or NHP	Search modes - Boolean/Phrase	Interface - EBSCOhost Research Databases Search Screen - Advanced Search Database - PsycINFO	Display
S78	"multidimensional fatigue inventory"	Search modes - Boolean/Phrase	Interface - EBSCOhost Research Databases Search Screen - Advanced Search Database - PsycINFO	Display
S77	"multi-dimensional fatigue inventory"	Search modes - Boolean/Phrase	Interface - EBSCOhost Research Databases Search Screen - Advanced Search Database - PsycINFO	Display
S76	sf-6d	Search modes - Boolean/Phrase	Interface - EBSCOhost Research Databases Search Screen - Advanced Search Database - PsycINFO	Display
S75	facit-f	Search modes - Boolean/Phrase	Interface - EBSCOhost Research Databases Search Screen - Advanced Search Database - PsycINFO	Display
S74	mfsi-sf	Search modes - Boolean/Phrase	Interface - EBSCOhost Research Databases Search Screen - Advanced	Display

1			Search		
2			Database - PsycINFO		
3					
4	S73	"sickness impact profile"	Search modes - Boolean/Phrase	Interface - EBSCOhost Research Databases Search Screen - Advanced Search Database - PsycINFO	Display
5					
6					
7					
8					
9					
10					
11	S72	LDSI	Search modes - Boolean/Phrase	Interface - EBSCOhost Research Databases Search Screen - Advanced Search Database - PsycINFO	Display
12					
13					
14					
15					
16					
17					
18	S71	"liver disease symptom index"	Search modes - Boolean/Phrase	Interface - EBSCOhost Research Databases Search Screen - Advanced Search Database - PsycINFO	Display
19					
20					
21					
22					
23					
24					
25	S70	"short form 36" or sf-36 or sf36	Search modes - Boolean/Phrase	Interface - EBSCOhost Research Databases Search Screen - Advanced Search Database - PsycINFO	Display
26					
27					
28					
29					
30					
31					
32	S69	"short form 16" or sf-16 or sf16	Search modes - Boolean/Phrase	Interface - EBSCOhost Research Databases Search Screen - Advanced Search Database - PsycINFO	Display
33					
34					
35					
36					
37					
38					
39	S68	"short form 8" or sf8 or sf-8	Search modes - Boolean/Phrase	Interface - EBSCOhost Research Databases Search Screen - Advanced Search Database - PsycINFO	Display
40					
41					
42					
43					
44					
45					
46					
47	S67	WPAI	Search modes - Boolean/Phrase	Interface - EBSCOhost Research Databases Search Screen - Advanced Search Database - PsycINFO	Display
48					
49					
50					
51					
52					
53					
54	S66	"work productivity and activity impairment"	Search modes - Boolean/Phrase	Interface - EBSCOhost Research Databases Search Screen - Advanced Search	Display
55					
56					
57					
58					
59					

1
2
3
4
5
6
7
8
9
10
11
12
13
14
15
16
17
18
19
20
21
22
23
24
25
26
27
28
29
30
31
32
33
34
35
36
37
38
39
40
41
42
43
44
45
46
47
48
49
50
51
52
53
54
55
56
57
58
59
60

Manuscript

			Database - PsycINFO	
S65	"liver disease quality of life"	Search modes - Boolean/Phrase	Interface - EBSCOhost Research Databases Search Screen - Advanced Search Database - PsycINFO	Display
S64	LDQOL	Search modes - Boolean/Phrase	Interface - EBSCOhost Research Databases Search Screen - Advanced Search Database - PsycINFO	Display
S63	CLDQ	Search modes - Boolean/Phrase	Interface - EBSCOhost Research Databases Search Screen - Advanced Search Database - PsycINFO	Display
S62	"chronic liver disease questionnaire"	Search modes - Boolean/Phrase	Interface - EBSCOhost Research Databases Search Screen - Advanced Search Database - PsycINFO	Display
S61	(S45 OR S46 OR S47 OR S48 OR S49 OR S50 OR S51 OR S52 OR S53 OR S54 OR S55 OR S56 OR S57 OR S58 OR S59 OR S60)	Search modes - Boolean/Phrase	Interface - EBSCOhost Research Databases Search Screen - Advanced Search Database - PsycINFO	Display
S60	"liver disease**"	Search modes - Boolean/Phrase	Interface - EBSCOhost Research Databases Search Screen - Advanced Search Database - PsycINFO	Display
S59	(non-alcoholic or nonalcoholic) AND "fatty liver"	Search modes - Boolean/Phrase	Interface - EBSCOhost Research Databases Search Screen - Advanced Search Database - PsycINFO	Display
S58	"viral hepatitis"	Search modes - Boolean/Phrase	Interface - EBSCOhost Research Databases Search Screen - Advanced Search	Display

1			Database - PsycINFO		
2					
3	S57	"chronic hepatitis"	Search modes - Boolean/Phrase	Interface - EBSCOhost Research Databases Search Screen - Advanced Search Database - PsycINFO	Display
4					
5					
6					
7					
8					
9					
10	S56	"Hepatorenal Syndrome"	Search modes - Boolean/Phrase	Interface - EBSCOhost Research Databases Search Screen - Advanced Search Database - PsycINFO	Display
11					
12					
13					
14					
15					
16					
17	S55	"Hepatopulmonary Syndrome"	Search modes - Boolean/Phrase	Interface - EBSCOhost Research Databases Search Screen - Advanced Search Database - PsycINFO	Display
18					
19					
20					
21					
22					
23					
24	S54	Cholangiocarcinoma	Search modes - Boolean/Phrase	Interface - EBSCOhost Research Databases Search Screen - Advanced Search Database - PsycINFO	Display
25					
26					
27					
28					
29					
30					
31	S53	cirrhosis	Search modes - Boolean/Phrase	Interface - EBSCOhost Research Databases Search Screen - Advanced Search Database - PsycINFO	Display
32					
33					
34					
35					
36					
37					
38	S52	HBV	Search modes - Boolean/Phrase	Interface - EBSCOhost Research Databases Search Screen - Advanced Search Database - PsycINFO	Display
39					
40					
41					
42					
43					
44					
45	S51	HCV	Search modes - Boolean/Phrase	Interface - EBSCOhost Research Databases Search Screen - Advanced Search Database - PsycINFO	Display
46					
47					
48					
49					
50					
51					
52	S50	"hepatitis b"	Search modes - Boolean/Phrase	Interface - EBSCOhost Research Databases Search Screen - Advanced Search Database - PsycINFO	Display
53					
54					
55					
56					
57					
58					
59					
60					

1	S49	"hepatitis c"	Search modes - Boolean/Phrase	Interface - EBSCOhost Research Databases Search Screen - Advanced Search Database - PsycINFO	Display
2					
3					
4					
5					
6					
7	S48	DE "Hepatitis"	Search modes - Boolean/Phrase	Interface - EBSCOhost Research Databases Search Screen - Advanced Search Database - PsycINFO	Display
8					
9					
10					
11					
12					
13					
14	S47	DE "Cirrhosis (Liver)"	Search modes - Boolean/Phrase	Interface - EBSCOhost Research Databases Search Screen - Advanced Search Database - PsycINFO	Display
15					
16					
17					
18					
19					
20					
21					
22	S46	hcc	Search modes - Boolean/Phrase	Interface - EBSCOhost Research Databases Search Screen - Advanced Search Database - PsycINFO	Display
23					
24					
25					
26					
27					
28					
29	S45	"hepatocellular Carcinoma"	Search modes - Boolean/Phrase	Interface - EBSCOhost Research Databases Search Screen - Advanced Search Database - PsycINFO	Display
30					
31					
32					
33					
34					
35					
36	S44	(S17 AND S43) AND LA english)	Search modes - Boolean/Phrase	Interface - EBSCOhost Research Databases Search Screen - Advanced Search Database - PsycINFO	320
37					
38					
39					
40					
41					
42					
43	S43	S18 OR S19 OR S20 OR S21 OR S22 OR S23 OR S24 OR S25 OR S26 OR S27 OR S28 OR S29 OR S30 OR S31 OR S32 OR S33 OR S34 OR S35 OR S36 OR S37 OR S38 OR S39 OR S40 OR S41 OR S42	Search modes - Boolean/Phrase	Interface - EBSCOhost Research Databases Search Screen - Advanced Search Database - PsycINFO	66,002
44					
45					
46					
47					
48					
49					
50					
51					
52					
53					
54					
55	S42	(patient n10 reported) AND (outcome* or satisfaction* or measure*	Search modes - Boolean/Phrase	Interface - EBSCOhost Research Databases Search Screen - Advanced	Display
56					
57					
58					
59					
60					

1		or "quality of life")		Search	
2				Database - PsycINFO	
3					
4	S41	"health related quality of life"	Search modes - Boolean/Phrase	Interface - EBSCOhost Research Databases Search Screen - Advanced Search Database - PsycINFO	Display
5					
6					
7					
8					
9					
10					
11	S40	QOL	Search modes - Boolean/Phrase	Interface - EBSCOhost Research Databases Search Screen - Advanced Search Database - PsycINFO	Display
12					
13					
14					
15					
16					
17					
18	S39	HRQOL	Search modes - Boolean/Phrase	Interface - EBSCOhost Research Databases Search Screen - Advanced Search Database - PsycINFO	Display
19					
20					
21					
22					
23					
24					
25	S38	DE "Quality of Life"	Search modes - Boolean/Phrase	Interface - EBSCOhost Research Databases Search Screen - Advanced Search Database - PsycINFO	Display
26					
27					
28					
29					
30					
31					
32	S37	"Patient Outcome Assessment"	Search modes - Boolean/Phrase	Interface - EBSCOhost Research Databases Search Screen - Advanced Search Database - PsycINFO	Display
33					
34					
35					
36					
37					
38					
39	S36	EuroQOL-5D	Search modes - Boolean/Phrase	Interface - EBSCOhost Research Databases Search Screen - Advanced Search Database - PsycINFO	Display
40					
41					
42					
43					
44					
45					
46					
47	S35	"nottingham health profile" or NHP	Search modes - Boolean/Phrase	Interface - EBSCOhost Research Databases Search Screen - Advanced Search Database - PsycINFO	Display
48					
49					
50					
51					
52					
53					
54	S34	"multidimensional fatigue inventory"	Search modes - Boolean/Phrase	Interface - EBSCOhost Research Databases Search Screen - Advanced Search Database - PsycINFO	Display
55					
56					
57					
58					
59					
60					

1
2
3
4
5
6
7
8
9
10
11
12
13
14
15
16
17
18
19
20
21
22
23
24
25
26
27
28
29
30
31
32
33
34
35
36
37
38
39
40
41
42
43
44
45
46
47
48
49
50
51
52
53
54
55
56
57
58
59
60

Author Manuscript

			Database - PsycINFO	
S33	"multi-dimensional fatigue inventory"	Search modes - Boolean/Phrase	Interface - EBSCOhost Research Databases Search Screen - Advanced Search Database - PsycINFO	Display
S32	sf-6d	Search modes - Boolean/Phrase	Interface - EBSCOhost Research Databases Search Screen - Advanced Search Database - PsycINFO	Display
S31	facit-f	Search modes - Boolean/Phrase	Interface - EBSCOhost Research Databases Search Screen - Advanced Search Database - PsycINFO	Display
S30	mfsi-sf	Search modes - Boolean/Phrase	Interface - EBSCOhost Research Databases Search Screen - Advanced Search Database - PsycINFO	Display
S29	"sickness impact profile"	Search modes - Boolean/Phrase	Interface - EBSCOhost Research Databases Search Screen - Advanced Search Database - PsycINFO	Display
S28	LDSI	Search modes - Boolean/Phrase	Interface - EBSCOhost Research Databases Search Screen - Advanced Search Database - PsycINFO	Display
S27	"liver disease symptom index"	Search modes - Boolean/Phrase	Interface - EBSCOhost Research Databases Search Screen - Advanced Search Database - PsycINFO	Display
S26	"short form 36" or sf-36 or sf36	Search modes - Boolean/Phrase	Interface - EBSCOhost Research Databases Search Screen - Advanced Search Database - PsycINFO	Display

1	S25	"short form 16" or sf-16 or sf16	Search modes - Boolean/Phrase	Interface - EBSCOhost Research Databases Search Screen - Advanced Search Database - PsycINFO	Display
2					
3					
4					
5					
6					
7	S24	"short form 8" or sf8 or sf-8	Search modes - Boolean/Phrase	Interface - EBSCOhost Research Databases Search Screen - Advanced Search Database - PsycINFO	Display
8					
9					
10					
11					
12					
13					
14	S23	WPAI	Search modes - Boolean/Phrase	Interface - EBSCOhost Research Databases Search Screen - Advanced Search Database - PsycINFO	Display
15					
16					
17					
18					
19					
20					
21					
22	S22	"work productivity and activity impairment"	Search modes - Boolean/Phrase	Interface - EBSCOhost Research Databases Search Screen - Advanced Search Database - PsycINFO	Display
23					
24					
25					
26					
27					
28					
29	S21	"liver disease quality of life"	Search modes - Boolean/Phrase	Interface - EBSCOhost Research Databases Search Screen - Advanced Search Database - PsycINFO	Display
30					
31					
32					
33					
34					
35					
36	S20	LDQOL	Search modes - Boolean/Phrase	Interface - EBSCOhost Research Databases Search Screen - Advanced Search Database - PsycINFO	Display
37					
38					
39					
40					
41					
42					
43	S19	CLDQ	Search modes - Boolean/Phrase	Interface - EBSCOhost Research Databases Search Screen - Advanced Search Database - PsycINFO	Display
44					
45					
46					
47					
48					
49					
50	S18	"chronic liver disease questionnaire"	Search modes - Boolean/Phrase	Interface - EBSCOhost Research Databases Search Screen - Advanced Search Database - PsycINFO	Display
51					
52					
53					
54					
55					
56					
57					
58					
59					
60					

1	S17	(S1 OR S2 OR S3 OR S4	Search modes -	Interface - EBSCOhost	Display
2		OR S5 OR S6 OR S7 OR	Boolean/Phrase	Research Databases	
3		S8 OR S9 OR S10 OR		Search Screen - Advanced	
4		S11 OR S12 OR S13 OR		Search	
5		S14 OR S15 OR S16)		Database - PsycINFO	
6					
7	S16	"liver disease**"	Search modes -	Interface - EBSCOhost	Display
8			Boolean/Phrase	Research Databases	
9				Search Screen - Advanced	
10				Search	
11				Database - PsycINFO	
12					
13					
14					
15	S15	(non-alcoholic or	Search modes -	Interface - EBSCOhost	Display
16		nonalcoholic) AND "fatty	Boolean/Phrase	Research Databases	
17		liver"		Search Screen - Advanced	
18				Search	
19				Database - PsycINFO	
20					
21					
22	S14	"viral hepatitis"	Search modes -	Interface - EBSCOhost	Display
23			Boolean/Phrase	Research Databases	
24				Search Screen - Advanced	
25				Search	
26				Database - PsycINFO	
27					
28					
29	S13	"chronic hepatitis"	Search modes -	Interface - EBSCOhost	Display
30			Boolean/Phrase	Research Databases	
31				Search Screen - Advanced	
32				Search	
33				Database - PsycINFO	
34					
35					
36	S12	"Hepatorenal Syndrome"	Search modes -	Interface - EBSCOhost	Display
37			Boolean/Phrase	Research Databases	
38				Search Screen - Advanced	
39				Search	
40				Database - PsycINFO	
41					
42					
43	S11	"Hepatopulmonary	Search modes -	Interface - EBSCOhost	Display
44		Syndrome"	Boolean/Phrase	Research Databases	
45				Search Screen - Advanced	
46				Search	
47				Database - PsycINFO	
48					
49					
50	S10	Cholangiocarcinoma	Search modes -	Interface - EBSCOhost	Display
51			Boolean/Phrase	Research Databases	
52				Search Screen - Advanced	
53				Search	
54				Database - PsycINFO	
55					
56					
57					
58					
59					
60					

1	S9	cirrhosis	Search modes - Boolean/Phrase	Interface - EBSCOhost Research Databases Search Screen - Advanced Search Database - PsycINFO	Display
2					
3					
4					
5					
6					
7	S8	HBV	Search modes - Boolean/Phrase	Interface - EBSCOhost Research Databases Search Screen - Advanced Search Database - PsycINFO	Display
8					
9					
10					
11					
12					
13					
14	S7	HCV	Search modes - Boolean/Phrase	Interface - EBSCOhost Research Databases Search Screen - Advanced Search Database - PsycINFO	Display
15					
16					
17					
18					
19					
20					
21					
22	S6	"hepatitis b"	Search modes - Boolean/Phrase	Interface - EBSCOhost Research Databases Search Screen - Advanced Search Database - PsycINFO	Display
23					
24					
25					
26					
27					
28					
29	S5	"hepatitis c"	Search modes - Boolean/Phrase	Interface - EBSCOhost Research Databases Search Screen - Advanced Search Database - PsycINFO	Display
30					
31					
32					
33					
34					
35					
36	S4	DE "Hepatitis"	Search modes - Boolean/Phrase	Interface - EBSCOhost Research Databases Search Screen - Advanced Search Database - PsycINFO	Display
37					
38					
39					
40					
41					
42					
43	S3	DE "Cirrhosis (Liver)"	Search modes - Boolean/Phrase	Interface - EBSCOhost Research Databases Search Screen - Advanced Search Database - PsycINFO	Display
44					
45					
46					
47					
48					
49					
50	S2	hcc	Search modes - Boolean/Phrase	Interface - EBSCOhost Research Databases Search Screen - Advanced Search Database - PsycINFO	Display
51					
52					
53					
54					
55					
56					
57					
58					
59					
60					

1	S1	"hepatocellular Carcinoma"	Search modes - Boolean/Phrase	Interface - EBSCOhost Research Databases Search Screen - Advanced Search Database - PsycINFO	Display
---	----	-------------------------------	----------------------------------	--	---------

Author Manuscript

2
3
4
5
6
7
8
9
10
11
12
13
14
15
16
17
18
19
20
21
22
23
24
25
26
27
28
29
30
31
32
33
34
35
36
37
38
39
40
41
42
43
44
45
46
47
48
49
50
51
52
53
54
55
56
57
58
59
60

COCHRANE

Description:

ID	Search	Hits
#1	"chronic liver disease questionnaire"	35
#2	CLDQ	32
#3	LDQOL	0
#4	"liver disease quality of life"	3
#5	WPAI	146
#6	"work productivity and activity impairment"	165
#7	"short form 8"	40
#8	sf-8	63
#9	sf8	2
#10	sf16	1
#11	sf-16	10
#12	"short form 16"	3
#13	sf-36	6305
#14	"short form 36"	4172
#15	sf36	611
#16	"liver disease symptom index"	1
#17	LDSI	1
#18	"sickness impact profile"	938
#19	MeSH descriptor: [Sickness Impact Profile] explode all trees	539
#20	MFSI-sf	16
#21	facit-f	149
#22	sf-6d	223
#23	"multi-dimensional fatigue inventory"	9
#24	"nottingham health profile"	444
#25	NHP	273
#26	EuroQOL-5d	448
#27	MeSH descriptor: [Patient Reported Outcome Measures] explode all trees	21
#28	MeSH descriptor: [Patient Outcome Assessment] explode all trees	220
#29	MeSH descriptor: [Outcome Assessment (Health Care)] this term only	6690
#30	HRQOL	2911
#31	"health-related quality of life"	9911
#32	"patient reported" and (satisfaction or outcome* or measure* or "quality of life")	5497
#33	MeSH descriptor: [Quality of Life] explode all trees	19833
#34	#1 or #2 or #3 or #4 or #5 or #6 or #7 or #8 or #9 or #10 or #11 or #12 or #13 or #14 or #15 or #16 or #17 or #18 or #19 or #20 or #21 or #22 or #23 or #24 or #25 or #26 or #27 or #28 or #29 or #30 or #31 or #32 or #33	40999
#35	"Hepatocellular carcinoma"	2884
#36	MeSH descriptor: [Carcinoma, Hepatocellular] explode all trees	1340
#37	hcc	1759
#38	"chronic liver disease*"	1054
#39	"advanced liver disease*"	184
#40	MeSH descriptor: [Hepatitis C] explode all trees	2656
#41	"hepatitis c"	6600
#42	MeSH descriptor: [Hepatitis B] explode all trees	2163
#43	"hepatitis b"	6727
#44	HCV	4590
#45	HBV	2812
#46	MeSH descriptor: [Liver Cirrhosis] explode all trees	2473

- #47 cirrhosis 7119
- #48 cholangiocarcinoma 297
- #49 MeSH descriptor: [Cholangiocarcinoma] explode all trees 82
- #50 MeSH descriptor: [Hepatopulmonary Syndrome] explode all trees 5
- #51 "hepatopulmonary syndrome" 18
- #52 MeSH descriptor: [Hepatitis, Chronic] this term only 248
- #53 MeSH descriptor: [Hepatitis, Viral, Human] this term only 138
- #54 "chronic hepatitis" 6737
- #55 "viral hepatitis" 1448
- #56 "non-alcoholic" 840
- #57 nonalcoholic 1026
- #58 "fatty liver" 1466
- #59 #56 or #57 1411
- #60 #59 and #58 1025
- #61 MeSH descriptor: [Non-alcoholic Fatty Liver Disease] explode all trees 197
- #62 "liver disease*" 7326
- #63 alcoholic 3922
- #64 #62 and #63 1144
- #65 MeSH descriptor: [Liver Diseases, Alcoholic] explode all trees 412
- #66 #35 or #36 or #37 or #38 or #39 or #40 or #41 or #42 or #43 or #44 or #45 or #46 or #47 or #48 or #49 or #50 or #51 or #52 or #53 or #54 or #55 or #60 or #61 or #64 or #65 22582
- #67 #34 and #66 739

Author Manuscript

Pubmed Search*Disease Concept Block*

"Carcinoma, Hepatocellular"[Mesh] OR "hepatocellular carcinoma"[tw] OR hcc[tw] OR "Liver Diseases, Alcoholic"[Mesh] OR "chronic liver disease"[tiab] OR "chronic liver diseases"[tiab] OR "advanced liver disease"[tiab] OR "advanced liver diseases"[tiab] OR "Hepatitis B"[Mesh] OR "Hepatitis C"[Mesh] OR "hepatitis b"[tw] OR "hepatitis c"[tw] OR hcv[tw] OR hbv[tw] OR "Liver Cirrhosis"[Mesh] OR cirrhosis[tw] OR "Non-alcoholic Fatty Liver Disease"[Mesh] OR "Non-alcoholic Fatty Liver Disease"[tw] OR "Cholangiocarcinoma"[Mesh] OR "Cholangiocarcinoma"[tw] OR "Hepatopulmonary Syndrome"[Mesh] OR "Hepatopulmonary Syndrome"[tw] OR "Hepatorenal Syndrome"[Mesh] OR "Hepatorenal Syndrome"[tw] OR "Hepatitis, Chronic"[Mesh:noexp] OR "Hepatitis, Viral, Human"[Mesh:noexp] OR (hepatitis[tiab] and (chronic[tiab] or viral[tiab]))

AND*Patient Reported Outcome Bloc*

"chronic liver disease questionnaire"[tw] OR CLDQ[tw] OR LDQOL[tw] OR "work productivity and activity impairment"[tw] OR "WPAI"[tw] OR "short form 8"[tw] OR sf-8[tw] OR sf8[tw] OR sf-16[tw] OR sf16[tw] OR sf-36[tw] OR "short form 36"[tw] OR "liver disease symptom index"[tw] OR LDSI[tw] OR sf36[tw] OR "sickness impact profile"[tw] OR mfsi-sf[tw] OR facit-f[tw] OR sf-6d[tw] OR "multi-dimensional fatigue inventory"[tw] OR MFSI-SF[tw] OR "nottingham health profile"[tw] OR EuroQOL-5D[tw] OR "sickness impact profile"[tw] OR SIP[tw] OR "patient reported outcome measures"[mh] OR patient outcome assessment[mh] OR "patient satisfaction"[tw] OR "patient reported"[tw] OR "quality of life"[tiab] OR "quality of life"[mesh] OR "Outcome Assessment (Health Care)"[Majr] OR HRQOL[tw] OR "patient reported outcomes"[tw] OR "health-related quality of life"[tw] OR QOL[tw] OR "quality of life"[tw]

Author