





REVIEW ARTICLE

Biosynthesis, structure, and folding of the insulin precursor protein

Ming Liu MD^{1,2} | Michael A. Weiss MD^{3,4}  | Anoop Arunagiri PhD²  | Jing Yong PhD⁵ | Nischay Rege⁴ | Jinhong Sun MD^{1,2} | Leena Haataja PhD² | Randal J. Kaufman PhD⁵  | Peter Arvan MD² 

¹Department of Endocrinology and Metabolism, Tianjin Medical University General Hospital, Tianjin, China

²Division of Metabolism, Endocrinology & Diabetes, University of Michigan Medical School, Ann Arbor, Michigan

³Department of Biochemistry and Molecular Biology, Indiana University School of Medicine, Indianapolis, Indiana

⁴Department of Biochemistry, Case-Western Reserve University, Cleveland, Ohio

⁵Degenerative Diseases Program, Sanford Burnham Prebys Medical Discovery Institute, La Jolla, California

Correspondence

Ming Liu, MD, Department of Endocrinology and Metabolism, Tianjin Medical University General Hospital, 154 Anshan Road, Heping District, Tianjin, China 300052.

Email: mingliu@tmu.edu.cn

Michael A. Weiss, MD, Department of Biochemistry and Molecular Biology, Indiana University School of Medicine, Indianapolis, IN 46202.

Email: weissma@iu.edu

Randal J. Kaufman, PhD, Degenerative Diseases Program, Sanford Burnham Prebys Medical Discovery Institute, La Jolla, CA 92307.

Email: rkaufman@sbgpdiscovery.org

Peter Arvan, MD, Metabolism, Endocrinology & Diabetes University of Michigan Brehm Tower rm 5112, 1000 Wall St. Ann Arbor, MI 48105.

Email: parvan@umich.edu

Funding information

the U-M Protein Folding Diseases Initiative; NIH, Grant/Award Numbers: R24DK110973, R01DK113171, R01DK111174, R01DK48280; Tianjin Municipal Science and Technology Commission, Grant/Award Number: 17ZXMFSY00150; National Natural Science Foundation of China, Grant/Award Numbers: 81620108004, 81570699, 81370895

Insulin synthesis in pancreatic β -cells is initiated as preproinsulin. Prevailing glucose concentrations, which oscillate pre- and postprandially, exert major dynamic variation in preproinsulin biosynthesis. Accompanying upregulated translation of the insulin precursor includes elements of the endoplasmic reticulum (ER) translocation apparatus linked to successful orientation of the signal peptide, translocation and signal peptide cleavage of preproinsulin—all of which are necessary to initiate the pathway of proper proinsulin folding. Evolutionary pressures on the primary structure of proinsulin itself have preserved the efficiency of folding (“foldability”), and remarkably, these evolutionary pressures are distinct from those protecting the ultimate biological activity of insulin. Proinsulin foldability is manifest in the ER, in which the local environment is designed to assist in the overall load of proinsulin folding and to favour its disulphide bond formation (while limiting misfolding), all of which is closely tuned to ER stress response pathways that have complex (beneficial, as well as potentially damaging) effects on pancreatic β -cells. Proinsulin misfolding may occur as a consequence of exuberant proinsulin biosynthetic load in the ER, proinsulin coding sequence mutations, or genetic predispositions that lead to an altered ER folding environment. Proinsulin misfolding is a phenotype that is very much linked to deficient insulin production and diabetes, as is seen in a variety of contexts: rodent models bearing proinsulin-misfolding mutants, human patients with Mutant *INS*-gene-induced Diabetes of Youth (MIDY), animal models and human patients bearing mutations in critical ER resident proteins, and, quite possibly, in more common variety type 2 diabetes.

KEYWORDS

disulphide-linked protein complexes, polypeptide chain initiation, Sec61 translocon, secretory protein biosynthetic pathway, unfolded protein response

1 | INTRODUCTION

The dynamics of insulin biosynthesis and secretion have been investigated in recent studies of normal human volunteers who received isotopic amino acid bolus labelling and 45 minutes later underwent a standard 75-g oral glucose tolerance test.¹ These studies indicate that ~80% of the C-peptide released from β -cells over the ensuing 3.5 hours is derived from “old” (ie, previously made) hormone pools whereas only ~20% is newly synthesized. As the storage pool of older insulin and C-peptide is vast, the small fractional contribution of new hormone nevertheless implies a “relative preference” for the release of new insulin,² particularly during the extended “second-phase” of insulin secretion.¹ Significantly, these findings underscore the importance of insulin secretory pathway dynamics,³ as β -cell homeostasis requires the maintenance and repletion of the insulin granule storage pool. Such homeostasis is critically dependent upon the biosynthetic pathway^{4–6} as well as granule turnover.⁷

“A pancreatic β -cell can readily synthesize 6000 preproinsulin molecules per second.⁸ The process of folding new proinsulin includes injection of the nascent polypeptide into the lumen of the endoplasmic reticulum (ER) followed by signal peptide cleavage and formation of 3 proinsulin disulphide bonds that are evolutionarily conserved throughout the vertebrate insulin/IGF superfamily.^{9,10}”

Pancreatic β -cells folding this amount of proinsulin have significant ongoing ER stress response (eg, spliced XBP1 protein) even in the absence of stimulation or addition of ER stressors.¹¹ After feeding, yet more proinsulin synthesis is required—and still more in insulin-resistant states such as pregnancy or obesity.^{12,13}

The pathway of proinsulin folding has been analysed in great detail by us and others, with a particular emphasis on how alterations in proinsulin disulphide bonding patterns in both rodent and human β -cells impact upon insulin production and secretion. Studies of *Akita* and *Munich* mouse models have shown that cysteine mutations in proinsulin interfere with proper disulphide bond formation. Such interference both aggravates ER stress and accounts for the onset of insulin-deficient diabetes, culminating ultimately in β -cell loss.^{14,15} It is possible that even in the absence of such mutations, intracellular oxidative or reductive stress^{16–18} could impair native disulphide pairing in proinsulin and in turn trigger the onset or progression of type 2 diabetes.

In this article, we bring together and unify 4 perspectives that span the features of preproinsulin biosynthesis including the earliest steps that deliver the protein to and through the ER membrane; structural features preserved in the proinsulin molecule to facilitate its folding to the native state in order to achieve ultimate biological activity; pathways of regulation of the ER environment that are designed to sense proinsulin folding load and to optimize successful proinsulin biosynthesis and factors that drive proinsulin misfolding in the ER in spite of the β -cell's best efforts to limit this phenotype. These considerations lead us to the consequences of

defects in any and all of the steps outlined herein: insulin production deficiency, β -cell ER stress, β -cell death and diabetes.

2 | PREPROINSULIN BIOSYNTHESIS AND TRANSLOCATION ACROSS THE ER MEMBRANE

2.1 | Routes of preproinsulin entry into the ER

Newly synthesized preproinsulin is composed of the signal peptide followed by the entirety of proinsulin, including segments corresponding to the insulin B-chain, C-peptide and insulin A-chain (Figure 1).

Preproinsulin biosynthesis is initiated in the cytosol. As a first step in insulin biosynthesis, newly synthesized preproinsulin must be guided by its signal peptide to the ER for translocation.^{19,20} In general, secretory preproteins can follow either co-translational and/or post-translational translocation routes into the ER. For preproinsulin, it had long been thought that only the signal recognition particle (SRP)-dependent co-translational mechanism was employed²¹ in which translation is coupled to translocation into the ER.^{22–24} Although this notion is compelling, emerging genetic and cell biological evidence indicates that preproinsulin translocation across the ER membrane is less efficient than previously thought.^{25–27} Specifically, recent studies have shown that in isolated human islets and β -cell lines, during a 10-minute metabolic labelling period, about 5% to 15% of fully synthesized preproinsulin molecules are not translocated across the ER membrane. What's more, this measurement underestimates the problem. Although preproinsulin translation itself is expected to require <20 seconds,²⁸ when the pulse-labelling period was shortened to 300 seconds (ie, ~15-fold longer than the translational requirement),

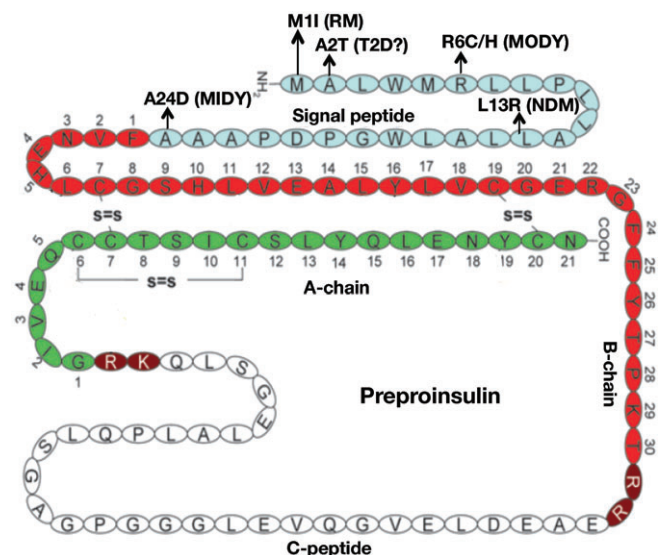


FIGURE 1 Human preproinsulin and its signal peptide mutations associated with diabetes in humans. Preproinsulin is comprised of the signal peptide (light blue), insulin-B chain (red), C-peptide (white) and insulin-A chain (green). Signal peptide mutations reported to cause diabetes in humans are indicated. RM, recessive mutation; T2D, type 2 diabetes; MODY, maturity onset diabetes of the young; NDM, neonatal diabetes; MIDY, mutant *INS*-gene induced diabetes of youth

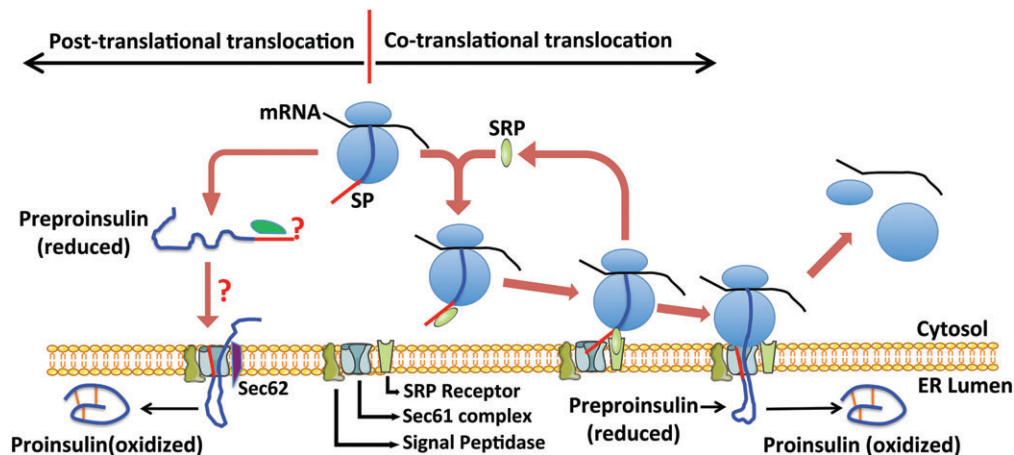


FIGURE 2 Preproinsulin translocation across the ER membrane. Newly synthesized preproinsulin molecules can be translocated into the ER through both SRP-dependent co-translational translocation and SRP-independent posttranslational translocation. In co-translational translocation, SRP recognizes and binds the preproinsulin SP emerging from the ribosomes, forming SRP-ribosome-preproinsulin complexes that interact with SRP receptor on the ER membrane, thereby targeting the nascent preproinsulin to the Sec61 translocon. For posttranslational translocation, although Sec62 is reportedly involved, the chaperones maintaining translocation competence of fully synthesized preproinsulin in the cytosol, and its mechanism of delivery to the ER membrane, have not yet been identified. This figure is reprinted with modification, with permission from *Vitamins and Hormones* (Reference 19)

up to 40% of completed preproinsulin nascent chains had not yet been translocated into the ER, showing the marked and unexpected inefficiency of its co-translational translocation.^{26,27,29} That fully synthesized but untranslocated preproinsulin molecules are unstable in the cytosol, which highlights the importance of their rescue via the posttranslational translocation route.

In 2012, it was reported that whereas inhibiting expression of a subunit of SRP or the SRP receptor could impair SRP-dependent co-translational translocation, preproinsulin translocation could nevertheless continue, seemingly unaffected.³⁰ By contrast, knockdown of Sec62 (which has been shown to facilitate the posttranslational mechanism) impaired preproinsulin translocation, suggesting that this route contributes significantly to the overall efficiency of preproinsulin translocation (Figure 2).

Indeed, an important fraction of translocation-dependent preproinsulin signal peptide cleavage was observed in β -cells to occur during the 10 minutes following completion of nascent chain biosynthesis,²⁶ strongly supporting the notion that translocation of newly synthesized preproinsulin is co-translationally inefficient and is completed via a posttranslational mechanism.

“The pathophysiological significance of defects in preproinsulin translocation and signal peptide cleavage is highlighted by recent discovery of 6 diabetogenic preproinsulin signal peptide mutations (Figure 1).^{25,27,29}”

As for most other secretory preproteins, the preproinsulin signal peptide is comprised of 3 regions, a positively charged “n-region,” a hydrophobic “h-region” and a more polar “c-region”; illustrative studies of the consequences of an n-region mutation are shown in Figure 3.

Diabetogenic preproinsulin mutations have been found in all 3 regions of the signal peptide, but interestingly, mutants in these 3 regions are associated with distinct diabetes phenotypes,

suggesting that the mutations may utilize distinct mechanisms and perturb different underlying steps in preproinsulin biosynthesis—each nevertheless leading to β -cell failure and diabetes.^{29,31,32}

2.2 | Intracellular machinery involved in posttranslational translocation of preproinsulin

Whereas the intracellular components involved in co-translational translocation of secretory preproteins are well-established, those involved in posttranslational translocation are less well studied. The Sec61 translocon is a common route for both co- and posttranslational translocation. However, unlike for co-translational translocation, preproteins undergoing posttranslational translocation appear to have additional requirements in order to efficiently engage the Sec61 translocon. To date, analyses of secretory preproteins that undergo posttranslational translocation suggest that several cytosolic molecular chaperones, including Hsp70, TRC40, calmodulin and Sec62/63 contribute to this pathway.

Hsp70 facilitates posttranslational translocation, presumably by preventing aggregation of untranslocated preproteins—thereby maintaining translocation-competence.^{33–35} The action(s) of Hsp70 might also account for the energy requirement of translocation. Proximity of calmodulin and TRC40 to signal sequences was showed in crosslinking studies. Such binding is thought to maintain translocation-competence of preproteins and facilitate ER targeting and delivery. Inhibiting or downregulating either cytosolic protein was found to greatly impair posttranslational translocation of preproteins.^{36,37} Additionally, 2 ER membrane proteins Sec62/63, are thought to be necessary for posttranslational engagement with the Sec61 translocon.^{38,39} In the specific case of preproinsulin, Sec62 is the only component of the translocation machinery that has been experimentally confirmed to play a role in promoting posttranslational translocation.³⁰

Another component that might contribute to the ER translocation of preproinsulin is the translocon-associated protein (TRAP) complex,

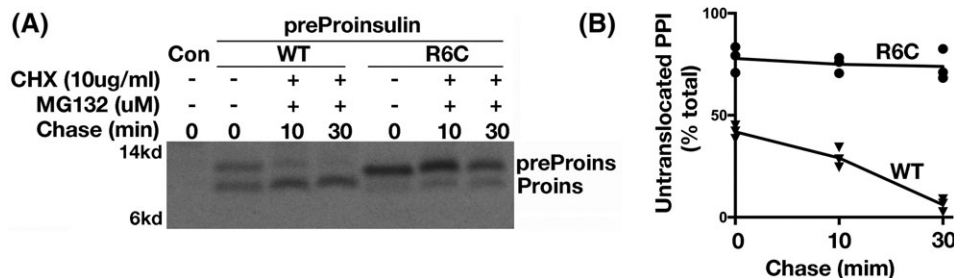


FIGURE 3 The n-region positive charge in preproinsulin signal peptide is critical for efficient posttranslational translocation of preproinsulin. A, A total of 293 T cells transfected with plasmids encoding preproinsulin wild-type (WT) or R6C mutant were pulse-labelled with ^{35}S -Met/Cys for 5 minutes followed by 0, 10 or 30 minutes of chase in the presence of 10 μM MG132 and 10 $\mu\text{g}/\text{mL}$ cycloheximide (CHX). Posttranslational translocation of preproinsulin-WT and R6C were analysed by immunoprecipitation, SDS-PAGE (Sodium Dodecyl Sulfate Polyacrylamide Gel Electrophoresis), and phosphorimaging. B, The signal-uncleaved and signal-cleaved forms of preproinsulin were quantified; the signal-uncleaved fraction is shown. Reprinted with permission from Reference 26

which is also known as the signal sequence receptor (SSR). A molecular neighbour of Sec61,^{40,41} TRAP was reported to facilitate initiation of protein translocation in a substrate-specific manner, especially for preproteins with weak Sec61 interactions.⁴² As preproinsulin is predisposed to inefficient translocation, it is possible that TRAP might enhance its efficiency, especially given that in a pancreatic β -cell line, mRNA encoding TRAP components are upregulated along with insulin mRNA in response to glucose stimulation.⁴³ Recently, a genetic polymorphism of TRAP α has been reported to be associated with type 2 diabetes, and with gestational diabetes.^{44,45} Additional studies will be needed to determine if the TRAP complex plays a role in insulin biosynthesis.

2.3 | Information intrinsic to the sequence of preproinsulin determines its route and efficiency of ER translocation

In addition to intracellular machinery, the biological properties of secretory preproteins are important factors in determining the translocation route chosen for entry into the ER. These intrinsic properties/signals include the length of the preprotein, the strength of the signal sequence, as well as structural information encoded in the proprotein beyond the signal peptide cleavage site.^{26,30,46,47} Among these factors, the length of the entire preprotein is one of the most important factors. Because SRP binding does not bring about complete translational arrest, smaller secretory proteins may easily be completed before SRP recognition or docking at the ER membrane, which leads to less efficient co-translational translocation: posttranslational translocation is then enlisted "as a backup" mechanism. Indeed, a recent study compared the efficiency of translocation of hybrid proteins led by the preproinsulin signal sequence and followed by 70 to 300 amino acids. Co-translational translocation became gradually less efficient for preproteins containing fewer than 110 residues (the length of authentic human preproinsulin). Indeed, for preproteins of ~ 70 residues (thought to represent a minimal requirement for SRP binding), up to 70% of the molecules are not translocated into the ER upon completion of polypeptide synthesis.²⁶ This inefficiency tends to shift small secretory preproteins to the posttranslational translocation route.⁴⁸ Given that many important cytokines and hormones

(including insulin) are derived from small polypeptide precursors, the pathophysiological role of posttranslational translocation may be far more important than previously realized.

The strength of the signal sequence that is recognized and bound by SRP also contributes to the choice of translocation route. Among the 3 regions of the signal sequence, a strong and undisrupted hydrophobic h-region appears to be the most important element in determining the strength of SRP binding. A short h-region, or one disrupted by polar or charged residues, may thus be subject to inefficient SRP binding and ER translocation.^{47,49,50} The h-region of the human preproinsulin signal sequence contains at least 10 hydrophobic residues that would in principle provide a relatively high score for SRP binding. Therefore, we attribute the low co-translational translocation efficiency of preproinsulin primarily to its short length (which allows for rapid completion of synthesis with escape from the co-translational process) rather than a structural inability to be recognized by SRP. Despite this predisposition to inefficient co-translational ER targeting, untranslocated preproinsulin molecules nonetheless find their way to the ER membrane,^{26,29,31} presumably via the assistance of some of the machinery described in the preceding section.

Upon delivery to the ER membrane, the preproinsulin signal peptide needs to be properly oriented within the Sec61 translocon, such that the n-terminus of the signal peptide faces the cytosolic side of the ER membrane. This orientation allows the cleavage site of the signal peptide to be exposed to signal peptidase on the luminal side of the ER membrane. Charged residues in the n-region, or the charge gradient flanking the h-region, help to orient the signal peptide to align itself with the complementary charge gradient existing within the Sec61 channel.^{29,51} This model is consistent with the fact that about 70% of the eukaryotic secretory preproteins contain positively charged residues in their signal sequence n-regions.^{26,52} Preproinsulin in particular has a highly conserved positive charged residue at the sixth residue of its signal sequence. In the case of the preproinsulin-R6C mutant, elimination of the n-region positive charge results in inefficient preproinsulin translocation, predisposing to β -cell failure and diabetes in humans carrying the mutation.^{25,29} Remarkably, the same diabetogenic mutation does not cause a detectable translocation defect when the mutant signal peptide is part of larger secretory preproteins, indicating that the defect caused by loss of the n-region

positive charge is manifest only in small secretory preproteins, that is, those (like proinsulin) that are more dependent upon posttranslational translocation.²⁶

3 | PROINSULIN STRUCTURAL FEATURES THAT ARE A CONSEQUENCE OF EVOLUTIONARY PRESSURES TO PRESERVE FOLDABILITY

3.1 | Clinical mutations as probes of foldability

Dominant mutations in the human insulin gene can lead to pancreatic β -cell dysfunction and diabetes due to toxic folding of a mutant proinsulin (the human MIDY [mutant *ins* gene-induced diabetes of youth] syndrome; see section 5.1, below). Whereas the majority of mutations introduce or remove a cysteine as highlighted above (leading in either case to an unpaired thiol), non-cysteine-related mutations in principle identify key determinants of folding efficiency. Studies of such mutations suggest that the evolution of insulin has been constrained not

only by the structure and function of the mature hormone, but also by the susceptibility of its single-chain precursor to impaired foldability.

“Broad conservation of these non-cysteine residues suggests that rules of proinsulin foldability are shared by a family of single-chain factors (such as mammalian insulin-like growth factors; IGF-I and II) and in part within the superfamily of invertebrate insulin-like proteins.^{53–55}”

3.2 | Mechanism of disulphide pairing

Oxidative folding of globular proteins has often been probed by chemical trapping of disulphide intermediates.⁵⁶ Application of this approach to proinsulin and related polypeptides (such as foreshortened single-chain analogs⁵⁷ and IGFs⁵⁸) showed transient accumulation of 1- and 2-disulphide intermediates.^{59–61} Successive steps yield partial folds via a sequence of free-energy landscapes (Figure 4A). The

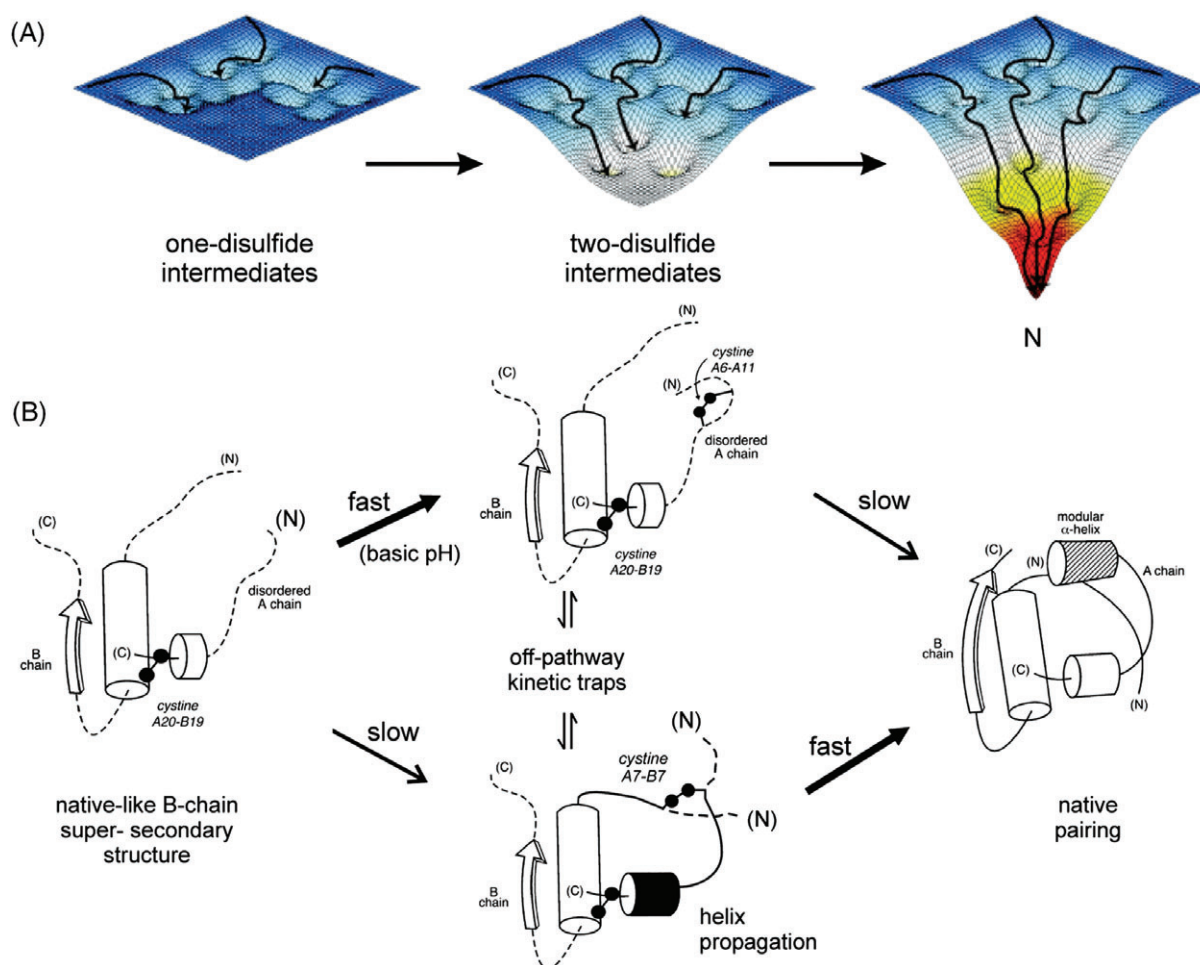


FIGURE 4 Energy landscape paradigm. A, Successive disulphide pairing enables a sequence of folding trajectories on ever-steeper funnel-shaped free-energy landscapes. B, Preferred pathway of disulphide pairing. Initial formation of cystine A20-B19 (left) is directed by a nascent hydrophobic core comprising the central B-domain α -helix (residues B9-B19), part of the C-terminal B-chain β -strand (B24-B26), and part of the C-terminal A-domain α -helix (A16-A20). Alternative pathways mediate successive disulphide pairing (middle panel) leading in turn to the native state (right). The mechanism of disulphide pairing is perturbed by clinical mutations associated with a monogenic syndrome of DM due to toxic misfolding of the variant proinsulin in the ER. Figure is adapted from Reference 62; panel A is adapted from an image kindly provided by J. Williamson

broad basin in such landscapes enables multiple trajectories to the native state (bottom of funnels) from an ensemble of unfolded and partially folded states. This perspective extends the classical disulphide-centered view of protein-folding intermediates⁶³ to encompass general biophysical principles of protein folding as an ensemble of atomic-level pathways.^{64–66}

The landscapes “mature” from shallow to steep, enabling nascent proinsulin to fold stepwise on successive disulphide pairing. Preferred disulphide intermediates and their time course of accumulation, as defined by chemical trapping, thus corresponds to multiple-folding trajectories on a progression of landscapes. Each landscape regulates the dynamics of accessible polypeptide conformations in the presence of a specific subset of disulphide bridges. MIDY mutations may in principle skew the shape of a particular landscape and/or block the transition from one to the next.

Refolding studies of native proinsulin (distinct from analogous studies of model systems and homologs) have been limited by aggregation, which has restricted such studies to be conducted at pH conditions above 9; this restriction has, at least in part, confounded interpretation in relation to mechanisms of folding and misfolding pertinent to conditions in the ER.⁶⁷ The disulphide pathways of mini-proinsulin and IGF-I are by contrast well-characterized near neutral pH as investigated by several laboratories.^{59–61,68–71} A consensus pathway is shown in Figure 4B.^{58,68,72–79} In this scheme, a pivotal role is played by A20–B19, the favoured initial cysteine. In the 3-dimensional structure of native insulin, this disulphide bridge packs within a cluster of conserved side chains in the hydrophobic core, connecting the C-terminal α -helix of the A chain to the central α -helix of the B chain.^{80–82} Because cysteine A20–B19 is the only one-disulphide species to accumulate in the refolding of model or homologous polypeptides,^{60,61,71} its pairing is envisioned to stabilize a specific folding nucleus.^{58,79,83}

3.3 | Structural models of folding intermediates

The above findings motivated construction of analogs (of insulin, mini-proinsulin and IGF-I) containing pairwise substitution of the other cysteines by Ala or Ser.^{68,70,72–79} Such analogs exhibit attenuated α -helix content as probed by circular dichroism (CD). Nucleation of native-like structure was nonetheless observed by isotope-directed ¹H-¹³C NMR (Nuclear Magnetic Resonance) spectroscopy in a disulphide-linked 2-chain fragment of IGF-I containing cysteine A20–B19: at low temperature the disulphide bridge native tethers α -helices within a native-like cluster of non-polar side chains.⁷⁹ Mutations within this A20–B19-associated subdomain impair disulphide pairing in insulin chain combination and the biosynthesis of single-chain precursors in *Saccharomyces cerevisiae*.^{74,83–86}

Remarkably, ¹H-NMR spectra of the above equilibrium models were found to exhibit a progressive chemical-shift dispersion with successive disulphide pairing, reflecting stepwise stabilization of structure in accordance with the successive landscape paradigm.^{58,68} After A20–B19 pairing, folding can proceed through several alternative channels. Oxidative refolding of mini-proinsulin, for example, exhibits subsequent rapid formation of cysteine A7–B7 (lower pathway in Figure 4B) or slow pairing of A6–A11 (upper pathway). Although it is

not intuitive why pairing of cysteines distant in the sequence (A7 and B7) is favoured relative to pairing of nearby cysteines (A6 and A11), spectroscopic studies revealed that pairwise serine substitution of cysteine A7–B7 destabilizes the structure of insulin more markedly than analogous removal of A6–A11.⁸³ These findings suggest that nascent structure in the one-disulphide (A20–B19) intermediate either more effectively aligns Cys^{A7} and Cys^{B7} or more significantly impairs pairing of Cys^{A6} and Cys^{A11}. Either on-pathway 2-disulphide intermediate may interconvert with non-native disulphide isomers as off-pathway kinetic traps (central panel of Figure 4B).

3.4 | Non-native disulphide pairing

The hazard to pancreatic β -cells posed by competing traps in the folding of proinsulin in the ER is considered in subsequent sections. The susceptibility of nascent proinsulin to forming non-native states is suggested by the aberrant refolding of a homologous polypeptide (IGF-I), which in vitro forms native and non-native disulphide isomers as alternative ground states (native IGF-I and IGF-*swap*).^{59,60} Containing respective pairings (A20–B19, A7–B7, A6–A11) (native) and (A20–B19, A6–B7, A7–A11) (*swap*), the isomers exhibit similar core structures near the shared A20–B19 disulphide bridge.^{60,87} In a “mini-IGF” model, the relative stabilities of these disulphide isomers is influenced by the N-terminal segment of the B domain.^{88,89} In human proinsulin, an homologous non-native isomer and yet another (with

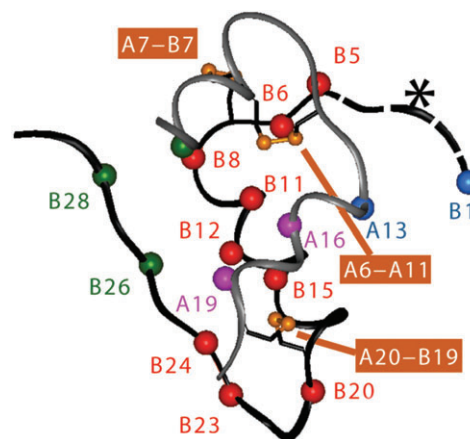


FIGURE 5 Critical sites governing the foldability of proinsulin are widely distributed in insulin. Asterisk indicates N-terminal segment of the B chain, which promotes foldability but is dispensable in the mature hormone.⁹⁵ Conserved side chains in or adjoining the C-terminal α -helix of the A chain (Leu^{A16} and Tyr^{A19}; C α purple spheres) and at multiple sites in the B chain (C α red spheres) impair insulin chain combination in accord with studies of mutant proinsulins in mammalian cell lines and the distribution of clinical non-cysteine mutations in the insulin gene. Contacts between the side chains Phe^{B1} and Ile^{A13} (C α blue spheres), although not well ordered in the native state, contribute to the cellular foldability of proinsulin. Residues Ile^{A2}, Tyr^{B26} and Pro^{B28} (C α green spheres) contribute to the structure and stability of the native state but are not required for efficient disulphide pairing in chain combination. Disulphide bridges are as indicated (orange). Co-ordinates were obtained from Protein Databank file 4INS and correspond to molecule 1 of the classical 2-Zn insulin hexamer⁹⁶

pairings [A20-B19, A11-B7, A6-A7]) forms in the presence of a chemical denaturant.⁸² Whereas the stability of IGF-*swap* is similar to that of native IGF-I, the accessible non-native isomers of insulin and proinsulin are molten globules of marginal stability.⁸¹

Evidence for the pathological relevance of non-native disulphide isomers of proinsulin and related polypeptides has been obtained in eukaryotic cell culture.⁹⁰⁻⁹⁴ Non-native isomers of human proinsulin are readily resolved in an SDS-polyacrylamide gel-based system (described further in section 5, below). Amino acid substitutions in human proinsulin can enhance the fraction of mispairing in the ER.^{91,92} Because propensity to misfold in this assay does not correlate with effects of the substitutions on thermodynamic stability *in vitro*, its mechanism is not well understood.

3.5 | Determinants of native disulphide pairing

Non-cysteine-related MIDY mutations are broadly distributed in the B chain of insulin. "Hot spots" occur in the N-terminal segment (residues B1-B8), central α -helix (B9-B19) and adjoining β -turn (B20-B23) together with its aromatic anchor (Phe^{B24}). An overview of key positions in these elements is provided in Figure 5. Each mutation site provides insight into a structural determinant of native disulphide pairing.

We will discuss specific examples in the direction C \rightarrow N as the C-terminal element of the B chain undergoes a change in conformation to serve a dual role in self-assembly and receptor binding.⁹⁷

The C-terminal segment of insulin (residues B24-B30) has attracted intensive investigation as it plays a central role in both

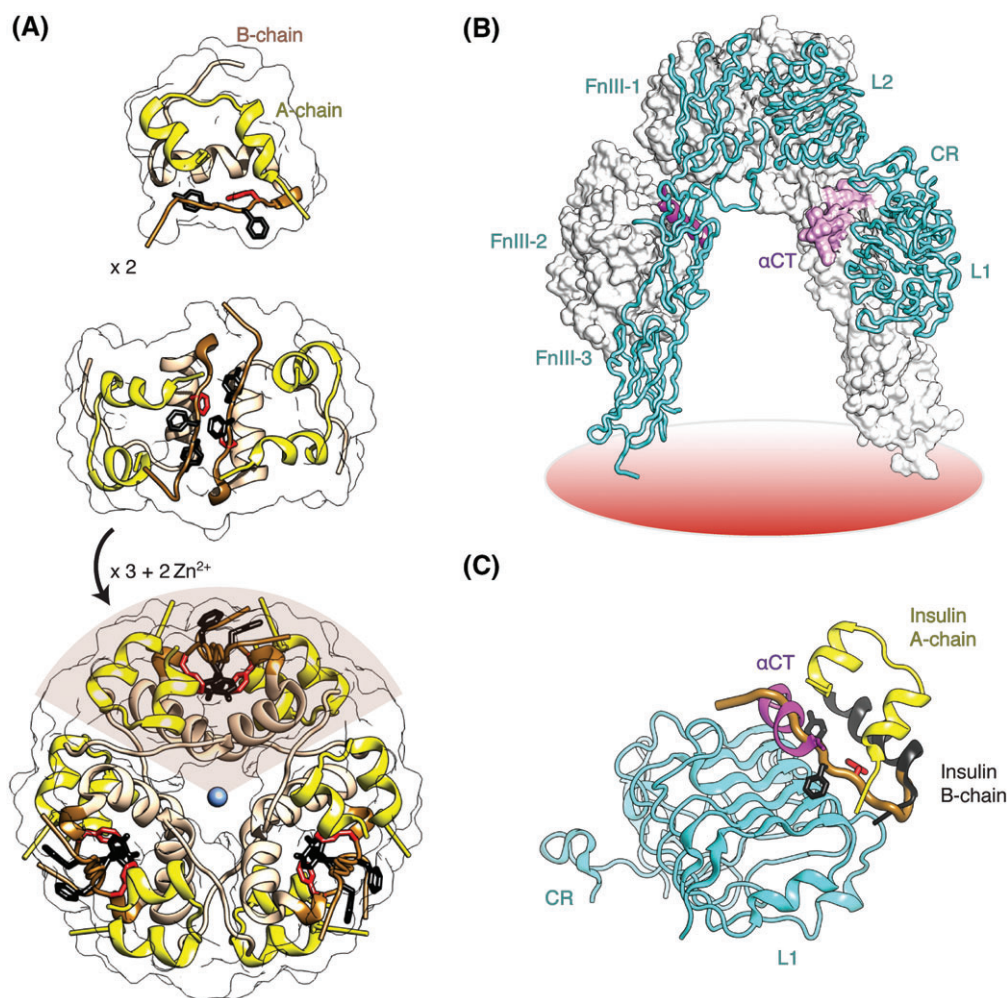


FIGURE 6 A, Structure and assembly of insulin with key roles of Phe^{B24}. Assembly of zinc insulin hexamer. The monomeric hormone (A- and B-chains, top panel) forms zinc-free dimers via antiparallel association of B-chain α -helices and C-terminal β -strands (brown, middle panel); 2 zinc ions then mediate assembly of 3 dimers to form classical hexamer (T_6 , bottom panel). The A chain is shown in yellow (ribbon), and the B chain in light brown (B1-B19) or brown (B20-B30). Conserved aromatic residues Phe^{B25} and Tyr^{B26} are shown as black sticks whereas Phe^{B24} is red. The Zn²⁺ ion is depicted in blue. The figure was in part modified from Reference 99 with permission of the authors. Co-ordinates were obtained from 4INS. B and C, Structure of IR receptor ectodomain. B, Δ -shaped IR ectodomain homodimer. One protomer is shown as a ribbon (labelled), and the other as molecular surface. Domains are: L1, first leucine-rich repeat domain; CR, cysteine-rich domain; L2, second leucine-rich repeat domain; FnIII-1-3, respective first, second and third fibronectin type III domains; and α CT, α -chain C-terminal segment. C, Model illustrating insulin in its classical-free conformation bound to site 1 of the microreceptor (L1-CR + α CT 704-719; designated μ IR).^{100,101} L1 and part of CR are shown in cyan, and α CT in magenta. Phe^{B24}, Phe^{B25} and Tyr^{B26} are as in A. The B chain is shown in dark gray (B6-B19); the position of the brown tube (residues B20-B30) would lead to steric clash between B26-B30 and α CT. The figure was in part modified from References 99,102 with permission of the authors. Coordinates were obtained from PDB entries 4OGA, 2DTG and 3W11

homodimerization and receptor binding. Structure-function relationships pertinent to dimerization have been extensively investigated since elucidation of the crystal structure of insulin by Hodgkin et al.⁹⁸ An overview of this process is shown in Figure 6A.

The recent co-crystal structure of insulin bound to a fragment of the insulin-receptor (IR) ectodomain has provided evidence for induced fit within the C-terminal segment B-chain.¹⁰³ As predicted based on studies of “anomalous” insulin analogs,^{104–106} detachment of the C-terminal β -strand (B24–B27) enables its docking in a groove between the N-terminal L1 β -helical domain of the IR α -subunit and its dimer-related C-terminal element, an α -helix denoted α CT. Predetachment of the B-chain β -strand by a chiral perturbation (eg, substitution by Phe^{B24} by D-Ala) was observed to enhance receptor binding at the expense of increased susceptibility to fibrillation.¹⁰⁶ Induced fit of the B chain may thus represent an evolutionary response to the danger of proteotoxicity: self-assembly of the closed state protects the hormone from fibrillation.

Phe^{B24} (shown in red in Figure 6A) is invariant among vertebrate insulins and IGFs. Its aromatic ring anchors the native B-chain β -strand against the α -helical core of the insulin monomer. Such anchoring stabilizes the hydrophobic core and contributes to dimerization (and thus zinc hexamer assembly).⁹⁶ Repositioning of Phe^{B24} enables induced fit on receptor binding¹⁰⁶ and engages with the receptor.^{100,101} Recent advances in the crystallographic analysis of the IR ectodomain as an inverted-V dimer (Figure 6B) has led to the identification of the primary hormone-binding elements, L1 and α CT.^{107,108} Repositioning of α CT on the surface of L1 requires repositioning of Phe^{B24} and displacement of residues B24–B30 as highlighted by superposition of the classical T state into a model complex (Figure 6C).

Whereas substitution of Phe^{B24} by Cys leads to a prototypical MIDY phenotype (presumably due to an odd number of cysteines, as in the *Akita* allele),¹⁰⁹ substitution by Ser was identified more than 30 years ago (by a team of investigators at the University of Chicago including the late D.F. Steiner, memorialized at this symposium) as a classical insulinopathy.¹¹⁰ Associated with a native-like structure in NMR studies,¹¹¹ this mutation led onset of diabetes in the proband's third decade of life rather than in infancy. Penetrance was variable in the pedigree.

Unlike classical insulinopathies Phe^{B25}→Leu (insulin *Chicago*) and Val^{A3}→Leu (insulin *Wakayama*), which markedly impair receptor binding,^{112,113} Ser^{B24}-insulin retains substantial (although reduced) biological activity.¹¹⁴ Studies of the proband indicated that the mutant and wild-type (WT) proinsulins were each processed and secreted into the bloodstream.¹¹⁴ Biochemical and cell biological studies have nonetheless uncovered defects in the variant precursor's efficiency of folding, leading to aberrant induction of ER stress. Significantly, the level of ER stress was observed to be less than that associated with neonatal-onset MIDY mutations.^{114–116}

We speculate that heterozygous inheritance of the Ser^{B24} mutation contributes to a lifelong burden of ER stress in pancreatic β -cells; whether this burden leads to adult-onset diabetes presumably depends on genetic background, that is, co-inheritance of other genetic variants that mitigate or accentuate ER stress in β -cells.

3.5.1 | B20–B22 β -turn

The super-secondary structure of the insulin B chain requires a β -turn between its central α -helix (residues B9–B19) and C-terminal β -strand. This turn contains conserved glycines at B20 and B23, which each exhibit a positive ϕ dihedral angle (ordinarily forbidden to L-amino acids). Whereas Ala substitutions impair the expression of mini-proinsulin in *S. cerevisiae* and impede chain combination, efficient disulphide pairing can be rescued by D-amino acid substitutions.⁸⁶ A MODY (maturity-onset diabetes of the young) mutation has been found at B23 and is expected to perturb pairing of cystine A20–B19. The structural mechanism by which a mutation at B22 (Arg → Gln; see above) causes a milder phenotype (analogous to MODY) is not apparent.^{116,117}

3.5.2 | Central α -helix

Nascent folding of the B-chain α -helix was found in equilibrium models of the key (A20–B19) folding intermediate^{68,79} and subsequent 2-disulphide intermediates.^{74,77,78,83} In these models, Leu^{B11} and Leu^{B15} each contributed to clustering of non-polar residues. MIDY mutations at these sites presumably block initial disulphide pairing and, should native disulphide pairing be achieved, perturb native structure and assembly. Indeed, Ala substitutions at B11 and B15 (although helicogenic in model peptides) impair the expression and secretion of mini-proinsulin in *S. cerevisiae*.⁸⁵ Whereas MIDY mutation Leu^{B15} → Pro would be expected to destabilize the entire central α -helix, even subtle substitutions in this helix have been found to impair insulin chain combination. A prominent example is provided by simple interchange of Leu^{B11} and Val^{B12}, predicted to perturb tertiary structure without net change in intrinsic helical potential.¹¹⁸ It is not clear why substitution of Tyr^{B16} by His, predicted to project at the surface of this α -helix,¹¹⁹ may impair folding.

3.5.3 | N-terminal segment

In both the solution structure of insulin^{72,105,120} and its crystallographic T-state,^{96,121} residues B1–B6 are extended (asterisk in Figure 5) whereas B7–B10 comprise a β -turn adjoining the central α -helix. N-terminal residues contribute to the specification of the A7–B7 disulphide bridge in vitro^{88,89} and to the overall efficiency of proinsulin folding in cell lines.⁹⁵ In the classical TR transition among zinc insulin hexamers,¹²² this segment reorganizes as an α -helix to extend the central α -helix of the B chain. Although pertinent to insulin pharmacology,¹²³ the physiological significance of the R state (if any) is not well understood.

Sites of MIDY mutation (His^{B5} and Gly^{B8}; broadly conserved among vertebrate insulins) have been well characterized.^{93,124–126} (1) In the native state His^{B5} packs within an inter-chain crevice, making one or more hydrogen bonds to carbonyl oxygens in the A chain. Diverse substitutions impair chain combination⁹³; Arg^{B5} (which is observed in some non-mammalian insulins) is by contrast well tolerated, presumably through formation of analogous inter-chain hydrogen bonds as visualized in its crystal structure.¹²⁶ In mammalian cell culture substitution of His^{B5} by Asp blocks the folding and secretion of human proinsulin.⁹³ (2) In the T state Gly^{B8} exhibits a positive ϕ dihedral angle (like Gly^{B20} and Gly^{B23} above). Whereas only Arg^{B8} and

Ser^{B8} have been found to date in patients, any L-amino-acid substitution impairs chain combination; yield is by contrast rescued by D-substitutions.¹²⁴ Such stereospecificity suggests that the sign of the B8 ϕ angle contributes to the alignment or misalignment of neighbouring Cys^{B7} for disulphide pairing.

Ser^{B8}-insulin retains substantial biological activity.¹²⁴ The solution structure of Ser^{B8} insulin as an engineered monomer retains native-like features yet reduced thermodynamic stability.^{93,125} Whereas decreased native-state stability can in principle contribute to misfolding, it is likely that a chiral main-chain perturbation at B8 may also impose a kinetic block to disulphide pairing, such as via decreased stabilities of populated folding intermediates. Evidence for such kinetic blocks has been provided by cellular studies in which this and related mutations lead to formation of non-native disulphide isomers.^{93,125} Alternatively, it is possible that these residues contribute to interactions of nascent proinsulin with ER chaperones and the oxidative machinery of disulphide pairing.¹²⁷ Interestingly, the substantial biological activities of Ser^{B8}-insulin and other “non-foldable” analogs^{93,95,125} indicates that residues required for efficient folding may be dispensable for the biological activity of the native state, once reached.^{128,129}

3.6 | The insulin A chain

The relative paucity of non-cysteine-related mutations in the A domain of proinsulin among MIDY patients investigated to date may seem surprising, yet this may merely reflect an incomplete sampling of patients. Certainly, substitutions at the conserved sites Leu^{A16} and Tyr^{A19} do impair the efficiency of chain combination.^{85,130,131} It is also possible that conserved non-cysteine residues in the A domain (Ile^{A2}, Asn^{A18}, Tyr^{A19} and Asn^{A21}) play a less critical role in disulphide pairing than do analogous internal residues in the B domain. Both explanations may have partial validity. On the one hand, studies of the

mechanism of chain combination have shown that the N-terminal A-chain α -helix (residues A1-A8) is not required for disulphide pairing.⁸⁰ Such dispensability is in accord with a putative structural pathway in which segmental folding of this α -helix is a late event (Figure 4B). On the other hand, the efficiency of chain combination is exquisitely sensitive to substitutions of core residue in the C-terminal A-chain α -helix (Leu^{A16} and Tyr^{A19}; purple spheres in Figure 5),^{130,132} and in fact mutation of Leu^{A16} has recently been recognized as a cause of human MIDY.¹³³ Thus, we would expect that continued genetic screening of MIDY patients may well uncover additional non-cysteine-related A-chain mutations.

4 | DYNAMIC REGULATION OF THE ER ENVIRONMENT IN RESPONSE TO SUCCESSFUL AND UNSUCCESSFUL PROINSULIN BIOSYNTHESIS

4.1 | Unfolded protein response

It is important to understand how an increase in proinsulin folding load can cause ER stress, and conversely how ER stress conditions affect proinsulin folding. The most ancient, conserved ER stress response (unfolded protein response, or UPR) is signalled through activation of the inositol-requiring enzyme 1 (IRE1), a protein kinase and endoribonuclease (described below). Two more recent evolutionary developments in ER stress signalling include the protein kinase-like endoplasmic reticulum kinase (PERK) and the transcription factor ATF6.^{134–136}

“It is generally believed that both active and inactive subpopulations of the three ER stress sensors co-exist in normal cells, with the proportion of the active subfractions linked to cellular physiology and secretory pathway activity.”

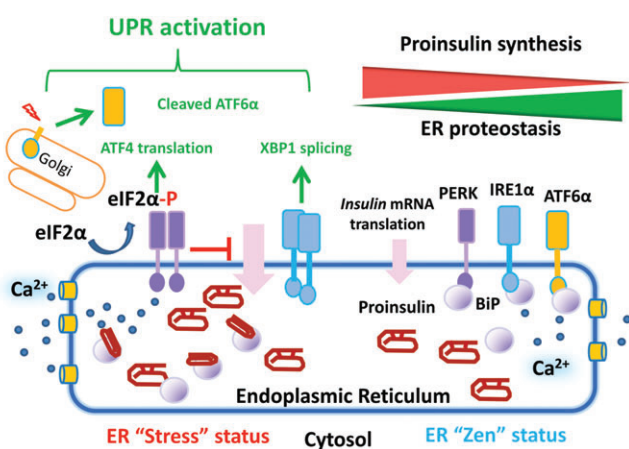


FIGURE 7 Illustration of ER stress response pathways and their activation by excessive proinsulin synthesis. Increased synthesis and abundance of newly-made proinsulin correlates with increased BiP binding to proinsulin, which leads to dimerization and activation of PERK and IRE1 α proteins, and translocation of full-length ATF6 α to the Golgi complex for proteolytic processing. Subsequent translation of ATF4 and spliced XBP1, together with the liberated cytosolic domain of ATF6 α , activate major transcriptional limbs of the stress response designed to restore proteostasis in the ER

The inactive subpopulations of ER stress sensor proteins are thought to be engaged in interactions with the ER protein chaperone BiP. An increased load of misfolded proteins in the ER effectively recruits BiP, thereby promoting a shift in BiP distribution away from PERK, IRE1 and ATF6,^{137,138} which is strongly correlated with an increase in the size of the active subpopulations for these stress sensor proteins (Figure 7).

Individually, the PERK-eIF2 α phosphorylation pathway serves as a translational brake that can help to alleviate ER protein load upon ER stress. There are multiple lines of evidence implicating inadequacy of PERK signalling as a possible trigger for proinsulin misfolding. *Perk* gene deletion in the mouse recapitulates many of the defects of the human Wolcott-Rallison syndrome including diabetes associated with degeneration of β -cell mass after birth.^{139,140} In these studies, ER distention, a morphological indicator suggesting ER stress, was observed by electron microscopy in pancreatic β -cells from *Perk* null mice. Normoglycemia can still be maintained with a 95% deletion of PERK within the adult β -cell population in mice that have not been challenged with high fat diet (HFD) or other causes of insulin resistance.¹⁴⁰ Nevertheless in the setting of insufficient PERK activity, the

rate of glucose-stimulated proinsulin synthesis is enhanced (although such a conclusion has been recently challenged¹⁴¹), which is most consistent with the notion that loss of PERK kinase activity results in a loss of homeostatic maintenance of newly synthesized proinsulin.

Activated PERK phosphorylates the α -subunit of the eukaryotic translation initiation factor 2 (eIF2 α) at serine residue S51, leading to rapid, reversible inhibition of mRNA translational initiation.¹⁴² The heterotrimeric GTPase eIF2 is required to bring initiator methionyl tRNA^{Met} to the 40S ribosome for AUG (adenosine-uridine-guanosine codon) initiation codon recognition.¹⁴³ Phosphorylation of eIF2 α to generate eIF2 α -P inhibits the GDP/GTP (guanosine-diphosphate/guanosine-triphosphate) exchange reaction of the eIF2B complex, thereby preventing eIF2 guanine nucleotide recycling which accompanies the initial step of protein synthesis.^{142,144} The S51A phosphorylation mutant in the *eIF2 α* locus was introduced into mice that, globally, cannot phosphorylate the mutant eIF2 α by any of the 4 known eIF2 α kinases.¹⁴⁴ Homozygous mutant mice die perinatally due to hypoglycemia and defective hepatic gluconeogenesis. However, heterozygous *eIF2 α -S51A* mice survive without a significant phenotype. Importantly, when fed a HFD that triggers insulin resistance, these mice develop β -cell failure and overt diabetes.¹⁴⁵ In addition, since the eIF2 α -S51A mutation in β -cells recapitulates all the effects of PERK deletion in mice and humans,¹⁴⁶ the findings support the notion that PERK acts through eIF2 α -P, one important consequence of which is attenuation of proinsulin (and other protein) accumulation in the ER, thereby limiting further ER stress. In the setting of unusually increased levels of proinsulin misfolding, CHOP protein (controlled primarily via the PERK branch of the UPR pathway) can contribute to β -cell death associated with unsuppressed protein synthesis and increased generation of intracellular reactive oxygen species (ROS).^{143,147} Importantly, deletion of the ER stress-induced proapoptotic gene *Chop* delayed onset of hyperglycemia in the *Akita* mouse¹⁴⁸ and suppressed β -cell failure in response to insulin resistance in diet-induced obese mice and *db/db* mice.¹⁴⁹ To summarize, for the PERK branch of the UPR, although free fatty acids, cytokines and high glucose are proposed to cause β -cell failure, analysis of mice with *eIF2 α -S51A* mutation or *Perk* deletion^{139,140} supports the notion that dysregulated proinsulin handling in the ER is sufficient to initiate β -cell failure.

The two other branches of the ER stress response, namely, the IRE1 α and ATF6 α pathways, also impact proinsulin folding by controlling ER proteostasis.^{136,150,151} Although there are α - and β -alleles of both IRE1 and ATF6 in the mammalian genome, IRE1 α is ubiquitously expressed (whereas IRE1 β is more narrowly expressed, particularly in intestinal epithelial cells) and ATF6 α contributes more broadly to UPR signalling (whereas ATF6 β has a far more limited activity in β -cells¹⁵²).

IRE1 α autophosphorylation activates a cytosolically oriented domain of the protein encoding an endoribonuclease that initiates non-conventional splicing of *Xbp1* mRNA,¹⁵⁰ removing a 26-base intron that leads to a shift in the translational open reading frame to produce a highly active bZIP transcription factor, XBP1s. XBP1s activates genes encoding ER protein translocation, ER chaperones, lipid biosynthetic enzymes and ER-associated degradation (ERAD) functions,^{153,154} all of which are thought to be needed for glucose-

stimulated insulin secretion and cell adaptation and survival in response to physiological demand.¹⁵⁵

Activation of the ATF6 α pathways is highly analogous to the sterol regulatory element binding protein (SREBP) activation pathway in that upon release from BiP, unsequestered ATF6 traffics to the Golgi complex where it gets cleaved by S1P and S2P proteases to produce a 50 kDa cytosolic fragment that translocates to the nucleus to serve as a potent transcriptional activator on genes that have complementary or overlapping functions to those activated by XBP1s.¹⁵¹ Studies implicate an important role of ATF6 in β -cell function and survival.^{156,157} Collectively, the XBP1s and ATF6 pathways serve a central function to maintain a productive ER protein folding environment, to increase ERAD to degrade misfolded proinsulin,^{150,151} and to help maintain the islet population of mature differentiated β -cells.^{158,159} Indeed, cells deficient for *Ire1 α* , *Xbp1* or *Atf6 α* are defective in ERAD.¹⁶⁰⁻¹⁶² The importance of ERAD in normal cellular physiology has recently been reviewed elsewhere.¹⁶³

4.2 | The protein disulphide isomerase family of ER oxidoreductases, and ERO1 as an upstream ER oxidase

The ER maintains a highly oxidizing intraluminal environment,¹⁷ which is considered crucial for proper proinsulin folding.¹⁶⁴ The protein disulphide isomerase (PDI) family of ER-resident proteins are strongly implicated in the oxidative folding of secretory proteins including proinsulin.^{165,166} Pancreatic islets are enriched in mRNA for PDIA1,¹⁶⁷ along with other abundant PDI-like oxidoreductase family members, such as ERp72 (PDIA4), P5 (PDIA6), ERp57 (PDIA3), PDIp (PDIA2) and ERp44, and may be further enriched in islets experiencing ER stress.¹⁶⁸⁻¹⁷¹ Although PDIA1 is important for correct proinsulin oxidative folding *in vitro*,^{172,173} it is currently unknown if PDI plays any essential role for proinsulin oxidation *in vivo*,¹⁷⁴ although it might play additional roles in the fate of proinsulin in pancreatic β -cells.¹⁷⁵

To the extent that PDI proteins oxidize proinsulin or other substrates, their own catalytic cysteine thiols need to become reoxidized in order to promote further cycles of substrate oxidation. In pancreatic β -cells, there is abundant expression of ERO1 α , which is ubiquitous to all cells, and there is additional selective high expression of ERO1 β ,¹⁷⁶ which can also serve as a major oxidase for β -cell ER oxidoreductases.^{177,178} ERO1 β regulates susceptibility to ER stress and can be induced by proinsulin flux.¹⁷⁹ *In vivo*, *Ero1 β* deficiency produces a phenotype of increased proinsulin entrapment in the ER, which is associated with lower β -cell insulin content and reduced insulin secretion.¹⁷⁷ Nevertheless, not all PDI family members require ERO1 to catalyse their reoxidation (although such reoxidation is thought necessary to allow PDI-mediated substrate oxidation to continue), suggesting the possibility of alternative oxidative recycling pathways for PDI family members.^{180,181}

4.3 | ER redox balance and the potential therapeutic utility of antioxidants

A substantial quantity of hydrogen peroxide (H₂O₂) is formed as a by-product of the ERO1-catalysed disulphide-formation pathway,¹⁸² although it is not clear that these particular ROS forms meaningfully

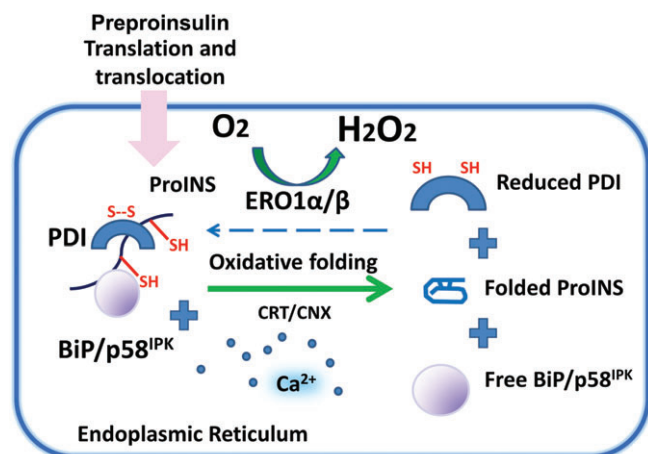


FIGURE 8 Proinsulin undergoes oxidative folding upon biosynthetic delivery into the ER lumen. Upon arrival in the ER lumen, proinsulin undergoes oxidative folding to form its 3 essential disulphide bonds, which is thought to be facilitated by members of the PDI family of ER oxidoreductases. The Ero1 family of upstream oxidases are considered important in shuttling the reducing equivalents (originating from proinsulin substrate) to molecular oxygen, while regenerating oxidized PDI proteins. In addition, Ca^{2+} -dependent and -independent chaperones such as BiP and $p58^{\text{IPK}}$ also play indispensable roles in assisting proinsulin folding, along with key ER resident proteins for other secretory protein substrates, such as calreticulin and calnexin

escape the ER to attack other cellular compartments,¹⁸³ and to the extent that they do, this might actually be beneficial for insulin gene expression.¹⁸⁴ Chemically, H_2O_2 in the ER forms at least in part via the action of ERO1 proteins, which utilize thiol-mediated electron transfer from members of the PDI family of oxidoreductases to molecular oxygen (Figure 8, and see below).

Alternatively, ROS may also be generated as a consequence of a futile cycle of oxidizing and reducing glutathione (GS-SG and GSH, for oxidized and reduced forms of glutathione, respectively¹⁸⁰). As a consequence, pancreatic β -cells, bearing the large load of proinsulin that must assemble 3 disulphide bonds per molecule, may be more susceptible to ER protein misfolding in response to overactivity of various oxidative enzymes.¹⁸⁵ In theory, pancreatic β -cells could utilize the activity of peroxiredoxin-4 (PRDX4) to consume H_2O_2 in the ER in order to make additional proinsulin disulphide bonds and resist ER stress¹⁸⁶; however, evidence to date has suggested a limited expression of PRDX4 in rodent islet β -cells,¹⁸⁷ although it becomes induced in islets of rodents upon HFD.¹⁸⁸

Interestingly, under certain circumstances, antioxidant treatment can effectively reduce ER stress and subsequent cell death.¹⁸⁹ This effect may be partially attributed to improved ER protein folding efficiency in cells with reduced oxidative stress. Feeding with a diet supplemented with the chemical antioxidant butylated hydroxyanisole (BHA), or deletion of the ER stress-induced proapoptotic gene *Chop*, significantly improved glucose homeostasis and restored β -cell function in mice bearing β -cell deletion of $p58^{\text{IPK}}$ (discussed below), the ER co-chaperone for BiP which is linked to proinsulin misfolding.¹⁴⁷ Intriguingly, antioxidants (ie, BHA) can improve proinsulin folding and reduce apoptosis under conditions of ER stress,¹⁴⁷ These data provide support that in the face of ER stress, restoration of cellular redox

balance with appropriate antioxidants can improve β -cell viability and function, and that a critical aspect of the improved function is an improvement in proinsulin folding in the ER lumen.¹⁴⁷

Collectively, these data underscore that appropriate levels of ROS generation and scavenging are necessary for proper proinsulin folding, while excessive protein synthesis and unfolded ER protein accumulation can cause an imbalance of ROS and uncontrolled oxidative stress, predisposing to β -cell death.^{147,149,190}

4.4 | ER quality control of proinsulin anterograde export

BiP is the most abundant ER protein chaperone and it functions by binding to hydrophobic patches^{191,192} in unfolded/misfolded proteins.^{193,194} Therefore, to a first approximation, the extent of proinsulin misfolding can be monitored by the extent of its interaction with BiP.¹⁴⁵ Importantly, such association with BiP^{195,196} (as well as other ER-resident peptide-binding proteins such as GRP94¹⁹⁷) participates critically in the mechanism of retention of unfolded proteins within the ER lumen (ER quality control).

Importantly, in HFD fed mice that do not bear any *INS* gene mutation, heterozygosity for *eIF2 α -S51A*, which results in exuberant proinsulin biosynthesis, results in a dramatic increase of proinsulin interaction with BiP,¹⁴⁵ underscoring a critical interaction between gene (heterozygous *eIF2 α -S51A*) and environment (HFD) in predisposition to β -cell failure. On the other hand, $p58^{\text{IPK}}$ is a molecular co-chaperone that is proposed to stimulate the ATP hydrolysis activity of BiP, which is necessary for the cyclical binding/release of BiP to its client proteins.¹⁹⁸ Indeed, *p58^{IPK}/DNAJc3* deleted mice develop oxidative stress in β -cells, with loss of β -cell mass, leading to diabetes at about 6 weeks of age.^{199,200} Although there is still debate on the ER localization of $p58^{\text{IPK}}$,^{200,201} biochemical study supports its direct involvement in assisting *Akita* mutant proinsulin folding, together with PDIA6.¹⁶⁶ Interestingly, *p58^{IPK}* mutation in humans is also associated with diabetic complications and multisystemic neurodegeneration.²⁰²

4.5 | ER calcium balance

Last but not least, proinsulin folding in the ER is affected by ER calcium homeostasis. The ER is a dominant storage organelle for calcium in metazoans.²⁰³ The most abundant ER resident proteins, including GRP94, BiP/GRP78, PDI, calreticulin and others, are influenced by calcium binding, and these chaperones may in turn affect proinsulin folding. In addition, pancreatic islets exhibit glucose-dependent cytosolic calcium oscillations in electrical activity, which are coupled with ER calcium changes.^{204,205}

Calcium accumulation in the ER lumen is maintained by the sarcolemmal/endoplasmic reticulum calcium ATPase (SERCA) family of calcium pumps. The SERCAs are encoded by 3 genes (*Serca1*, *Serca2* and *Serca3*), and their variety and activity are further diversified by the existence of splice variants and responses to ER stress.²⁰⁶ SERCA2b and SERCA3 are the most abundant isoforms expressed in pancreatic β -cells^{207,208} and are largely responsible for maintaining the ER-free calcium concentration in the physiological range of up to $\sim 500 \mu\text{M}$.²⁰⁹ SERCA pumps and store-operated calcium channels restore ER

luminal calcium upon the rapid release of ER calcium that occurs when β -cells are acutely stimulated. Although impaired SERCA function has been implicated in T2D models,²¹⁰ mice with *Serca3* deletion have normal basal glucose levels and glucose-stimulated insulin secretion. Indeed studies of *Serca3* deleted murine islets model^{207,208} have led to several insightful conclusions: (1) basal cytosolic calcium is mainly set by mechanisms other than SERCA pumps; (2) the initial phase of increased cytosolic calcium can be taken up by the ER in a SERCA-dependent manner; (3) during the later phase of cytosolic calcium oscillations, the ER pool modulates the frequency and amplitude of these oscillations. Interestingly, altered cytosolic calcium oscillation from *Serca3*-deleted islets is associated with increased insulin secretion in response to glucose stimulation.^{207,208} Thus, the ER calcium pool may influence insulin secretory release in response to nutrients. Finally, although theoretically possible,²⁰⁵ it is unknown if ER Ca^{2+} concentrations may fluctuate under physiological and pathophysiological conditions to a level that could affect proinsulin folding under the influence of calcium-sensitive chaperones and oxidoreductases.^{203,211}

Inositol 1,4,5-tri-phosphate receptors (IP₃Rs) are a main source of acute calcium release from the ER. IP₃Rs are encoded by 3 genes (*Itpr1*, *Itpr2* and *Itpr3*), with splicing variants that display a range of IP₃-binding affinities, with activation that affects cytosolic calcium concentration.²¹² The IP₃Rs form tetrameric channels that are distributed throughout the ER in clusters, and these clusters are considered calcium release “hot-spots.”^{203,213} Another class of calcium release channels is composed of the ryanodine receptors (RyR), which are encoded by 3 genes (*Ryr1*, *Ryr2* and *Ryr3*). RyRs are not highly expressed in pancreatic islets, and may contribute little to the ER Ca release in β -cells.

Although calcium homeostasis in the ER of pancreatic β -cells is far more complex topic than what is described above, a basic understanding is that: (1) free calcium concentration in the ER lumen regulates ER chaperones and oxidoreductases to facilitate proinsulin folding and (2) the free calcium in the ER lumen is also expected to have an effect on cytosolic calcium bursts that fine-tune insulin granule exocytosis in response to nutrients such as glucose and amino acids.

5 | PROINSULIN IN DIABETOGENIC CONDITIONS: MISFOLDED STATES IN THE ER

In spite of the fact that proinsulin biosynthesis is tightly coordinated with metabolic demand via physiological ER stress response (especially the activities of IRE1 α /XBP1 to regulate expression of much of the ER machinery necessary for successful proinsulin and insulin biosynthesis^{11,155,214})—it is increasingly recognized that proinsulin is highly susceptible to misfolding.^{9,215} When added to this underlying predisposition, coding sequence mutations such as occur in *Akita* proinsulin trigger a cascade of misfolding, blockade of ER export, intracellular accumulation of the mutant proinsulin, and a defect in the production and secretion of co-expressed WT insulin.^{216,217} Although it was initially thought that misfolded proinsulin (as occurs in *Akita* mice) cannot promote formation of aberrant intermolecular disulphide

bonds,²¹⁸ this conclusion was inconsistent with the demonstration of an increase in disulphide-bonded proinsulin aggregates in *Akita* islets.¹⁴

“It is now thought that aberrant intermolecular disulphide-bonded proinsulin is not only a notable feature in *Akita* mouse islets, but also occurs in WT mouse islets,²¹⁸ underscoring that WT proinsulin already has a propensity to misfold within the ER of pancreatic β -cells.^{92,164,219}”

5.1 | Heterozygous proinsulin mutations are a (rare but severe) cause of proinsulin misfolding

Proinsulin misfolding underlies the syndrome known as MIDY,^{32,220} a human version of the disease seen in *Akita* mice. Clinically, the majority of patients with this syndrome develop life-long insulin-deficient diabetes mellitus that typically begins in the neonatal period (although—depending upon the mutation—may occasionally be initiated later in life²⁵). As expected in neonatal diabetes, it is not uncommon to observe very rapid clinical development of pancreatic β -cell failure.¹¹⁹ Although patients with MIDY do not have insulin autoantibodies,^{117,221} the disease has often been labelled clinically as type 1 diabetes.¹¹⁶ Notably, all MIDY patients are heterozygotes, indicating the presence of co-expressed WT proinsulin. Recently, the first large animal (porcine) model of the proinsulin-C(A7)Y mutation has been developed^{222,223} which recapitulates all of the features of MIDY as elucidated both in *Akita* mice and humans.^{25,215} It is known that the detrimental effects of MIDY mutant proinsulin expression is dose-dependent and related to the mutant:WT ratio.^{94,217,222,224,225} In *Akita* mice, the mutant proinsulin protein represents 36% of total newly synthesized proinsulin translation product²²⁶; in transgenic MIDY pigs, total *INS* mRNA is ~44% mutant and ~56% WT; and in humans with MIDY the mutant:WT ratio is believed to be 50%:50%. The transgenic MIDY pigs first develop fasting hyperglycemia in the diabetic range between 2 and 3 months of life, and at 4.5 months of life when fasting glucose is >300 mg/dL, fasting circulating insulin and C-peptide levels are low, corresponding with decreased pancreatic insulin, decreased β -cell mass, and a markedly expanded and fragmented β -cell ER.^{222,223} From there, the animals progress to develop ketosis as detected by a further decrease of insulin immunostaining and a drastic loss of conventional islet structures (see Figure 9), similar to what is reported in *Akita* mice.²²⁷

In addition to aberrant intramolecular proinsulin folding, the mutant proinsulin-C(A7)Y forms aberrant disulphide-linked protein complexes²²⁶ that include (and co-precipitate) WT bystander proinsulin⁹⁴ in the ER,²²⁸ thereby blocking WT proinsulin intracellular transport through the secretory pathway and causing β -cell ER stress²²⁶ while also impairing downstream insulin production and insulin secretion,²²⁶ leading to diabetes.²²⁷ Other MIDY mutants generate much the same pathological phenotype^{32,229} although the intricacies of intramolecular disulphide mispairing differ for individual MIDY mutants.¹⁶⁴

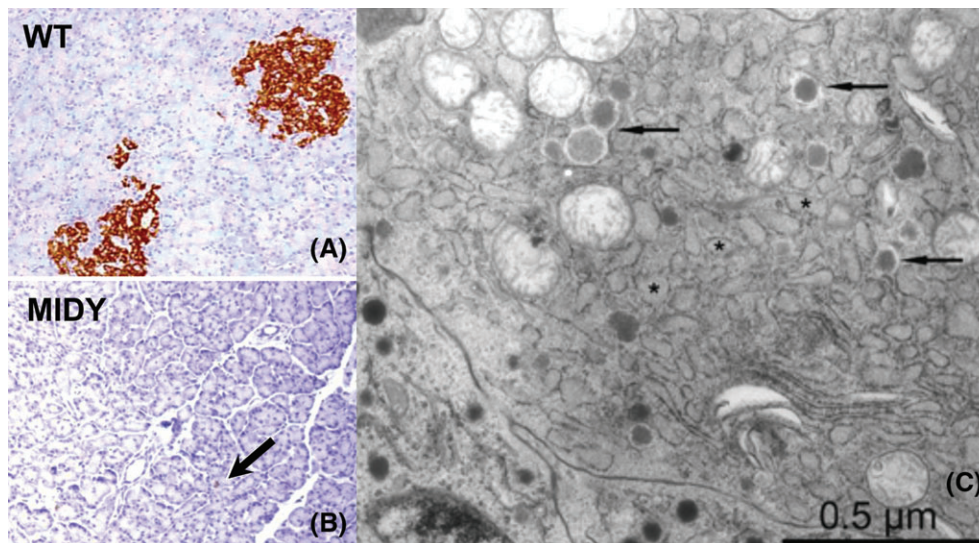


FIGURE 9 Pancreata and β -cells of transgenic mutant *INS* gene-induced diabetes of youth (MIDY) pigs, reproduced from References 222,223. A, Wild-type (WT) pig pancreas stained by immunoperoxidase with anti-insulin, counterstained with DAPI. B, Two-year old transgenic MIDY pig pancreas stained as in panel A. C, Transmission electron microscopy of pancreas from a 4.5-month-old transgenic MIDY pig bearing only few β -cell secretory granules (arrows) and hypertrophied ER (asterisks)

5.2 | Lipotoxicity and proinsulin misfolding

Free fatty acids have pleiotropic effects on pancreatic β -cells. In the near term, fatty acids such as palmitate can augment insulin synthesis and secretion.²³⁰ However, chronic fatty acid exposure significantly damages β -cells, and together, high glucose and fatty acid exposure can synergize (negatively) to trigger β -cell ER stress.²³¹ Clinically, increased levels of saturated free fatty acids, especially palmitate, tend to predict an increased risk of type 2 diabetes.²³²

Palmitate feeding to β -cells has been found to acutely increase cytosolic calcium and decrease ER calcium, leading to rapid phosphorylation of PERK, as well as other indicators of ER stress.²³³ In a pancreatic β -cell line fed palmitate for 6 hours, proinsulin (fluorescently tagged) was found to shift its intracellular distribution to become accumulated within the ER, with evidence of expansion of the ER compartment.²³⁴ Although it remains to be examined directly, these findings are highly suggestive of the possibility of fatty acid (palmitate) exposure leading to proinsulin misfolding.

One recent study has suggested that the β -cell ER stress generated by fatty acids might also be mediated through ER calcium depletion via calcium leak (to the cytosol) through the ER translocon.²³⁵ Interestingly, the protein synthesis elongation inhibitor anisomycin has been found to be β -cell-protective and prevents loss of ER calcium upon palmitate treatment, presumably by keeping the Sec61 translocation channel occupied with ribosomes. While anisomycin also enhances IRS-2 phosphorylation, making it difficult to exclude other indirect effects, it is worth noting that using a protein synthesis inhibitor to simply decrease the rate of proinsulin synthesis should help to improve proinsulin folding efficiency. As a proof of concept, decreased insulin gene expression has similarly been shown to significantly alleviate ER stress and enhance Akt phosphorylation (and even promote β -cell proliferation)—and these effects that accompany decreased proinsulin synthesis can be observed independently from the use of any general protein synthesis inhibitor or other drugs.²³⁶

Recent studies in *db/db* mice have suggested that suppression of Elov6 (a microsomal enzyme that converts saturated and monounsaturated C-16 fatty acids to C-18 species) can enhance islet insulin content leading to improved insulin secretion and glycemic control.²³⁷ This is clearly an interesting new system in which to explore potential lipotoxic effects on proinsulin biosynthesis and folding. Further, several compounds have been identified that not only enhance survival of primary human β -cells (as well as rodent β -cell lines) treated with tunicamycin (that inhibits N-linked protein glycosylation in the ER with consequent ER stress) and palmitate, but also enhance glucose-stimulated insulin secretion in these stressed cells.²³⁸ These and other candidate compounds need further examination for their potential ability to decrease proinsulin misfolding, in addition to their salutary effects on ER stress and ER stress-mediated cell death.

5.3 | Cytokines and proinsulin misfolding

Free fatty acids may also promote inflammation in islets, potentially via TLR4 activation and macrophage stimulation resulting in the local release of inflammatory cytokines including interleukin-1 β (IL-1 β),²³⁹ as well as by other potential mechanisms.²⁴⁰ The signalling from IL-1 β , and interferon- γ (IFN- γ) and IFN- α , have been suggested to perturb the ER microenvironment,²⁴¹ especially by lowering free calcium in the ER lumen²⁴² (perhaps by inhibitory effects on lumenally directed SERCA-2 or other ER calcium pumps^{243–245}). As described in preceding sections, the proinsulin folding process in the ER depends significantly on the ER microenvironment to facilitate both entry of newly synthesized (pre)proinsulin into the ER as well as the activity of folding chaperones and oxidoreductases that operate within a regulated redox range and a controlled level of ER luminal calcium.¹⁵⁵ Protection from cytokine-mediated toxicity has been reported in β -cells bearing ectopically expressed mitochondrial catalase to selectively limit mitochondrial ROS production.²⁴⁶

Nitric oxide generation in or around islets has also been suggested to be linked to cytokine response with lowered β -cell ER luminal calcium, leading to β -cell apoptosis,²⁴⁷ but the significance of these observations—at least in human β -cells—is still not very clear.²⁴⁸ Cytokine-mediated lowering of ER luminal calcium levels is indeed thought to be linked to ER stress, but while the underlying mechanism of calcium lowering and the applicability of the findings for human islets are ongoing areas investigation,²⁴⁴ a recent study suggests that inadequate upregulation of *Spry2* (which is downstream of the ER stress-mediated PERK pathway) could limit SERCA-2 activity and also lead to diminished *INS* mRNA expression.²⁴⁹

Human β -cells cultured short-term with IL-1 β and IFN- γ have been found to exhibit unabated proinsulin synthesis (with perturbed proinsulin-to-insulin conversion leading to increased unprocessed proinsulin secretion²⁵⁰). Remarkably, however, after 48 hours of inflammatory cytokine exposure, there is a dramatic loss of islet insulin content and diminished glucose-stimulated insulin secretion.²⁴⁸ Proinsulin misfolding under these conditions is a topic that clearly needs further investigation, but others have already gone ahead to employ an IL-1 β receptor antagonist (as a potential therapy for type 2 diabetes) with a beneficially increased ratio of insulin:proinsulin in the circulation.²⁵¹

Interestingly, if cytokines do alter the ER microenvironment in a manner that triggers chronic, severe proinsulin misfolding leading to hyperactivation of the IRE1 α limb of the ER stress response, this apparently can trigger a signalling cascade that can lead ultimately to still more IL-1 β secretion from pancreatic β -cells.²⁵² If so, it is conceivable that inflammatory cytokine exposure could trigger a dangerous positive feedback loop in which perturbation of the β -cell ER could ultimately result in the progressive generation of more inflammatory cytokines, worsening β -cell function and survival. An additional consequence of inflammatory cytokine stimulation may include ER stress-mediated formation and release of proinsulin-containing exosomes that could stimulate antigen-presenting cells, leading to β -cell autoimmunity.²⁵³

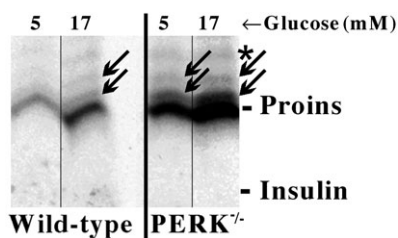


FIGURE 10 Two distinct non-native intramolecular disulphide isomers of proinsulin (at arrows; the native isomer position is also indicated). Isolated mouse pancreatic islets were preincubated for 40 minutes at the respective glucose concentrations, and were then pulse-labelled with ³⁵S-amino acids at these glucose concentrations. The islets were lysed, immunoprecipitated with anti-insulin and analysed by non-reducing tris-tricine-urea-SDS-PAGE as in Reference 92. An asterisk identifies a proinsulin conversion intermediate, the processing of which takes place beyond the ER

5.4 | Aging and proinsulin misfolding

Aging cells are thought to accumulate misfolded proteins through a functional decline in the machinery necessary for maintenance of protein homeostasis.²⁵⁴ Glucose intolerance and Type 2 diabetes incidence also tend to increase with age and this can be attributed primarily to an age-related decline in insulin secretion.^{255–259} The detrimental effects of aging do not appear as evident in mouse models.²⁶⁰ Nevertheless, isolated islets from NOD (Non-Obese Diabetic) mice (a model of autoimmunity) display age-dependent increases in parameters of ER stress and morphologic alterations in ER structure by electron microscopy²⁶¹ (as well as an increase in islet levels of cytosolic hsp90²⁶²), which accompany a progressive defect in insulin secretion.²⁶³ While it is unclear that such age-dependent predispositions also exist in WT mice, the immunohistochemical detection of insulin in the islets of WT Sprague-Dawley rats has been noted to decline significantly with age.²⁶⁴ Direct evaluation of proinsulin misfolding as a function of age remains a fertile area for further investigation.

5.5 | Hyperglycemia and proinsulin misfolding

From meal-to-fasting-to-meal, new insulin synthesis is dramatically increased or decreased by changes in prevailing blood glucose levels,²⁶⁵ primarily through up- and downregulation of proinsulin mRNA translation (along with that of proinsulin processing enzymes,²⁶⁶ although this coordinate expression may not persist in type 1 diabetic human pancreata that generate proinsulin but no detectable insulin or C-peptide.²⁶⁷) Ordinarily, the translational control of proinsulin biosynthesis is designed to replete the β -cell secretory granule pool size; however, there are many pathophysiological examples of a discord between a high magnitude of proinsulin biosynthesis that is not matched by a similar steady-state number of stored insulin secretory granules.^{268,269} Such may be the case in type 2 diabetes. Although it has been reported that only a small percentage of pancreatic insulin may be released for each meal, granule release iterated over time may deplete the storage pool, as reported in leptin receptor-deficient *db/db* diabetic mice²⁶⁹ in which hyperglycemia has been reported as the predominant factor underlying the defective β -cell phenotype.²⁷⁰ In such mice, proinsulin biosynthesis is markedly increased, the proportion of intracellular proinsulin is also increased, and the fraction of β -cell area occupied by ER is doubled.²⁶⁹ Under these conditions, the quantity of misfolded proinsulin is expected to be increased. Proinsulin synthesis in WT pancreatic islets increases shortly after exposure of islets to high glucose levels, and with that biosynthetic increase is observed an increase in non-native intramolecular disulphide isomers (see Figure 10, left 2 lanes).

Additional stimulation of proinsulin synthesis is observed in islets in which PERK is absent or inactive—exposure of such islets to elevated ambient glucose levels increases proinsulin biosynthesis still further, making non-native intramolecular disulphide isomers still more abundant (Figure 10, right 2 lanes; and similar observations of proinsulin misfolding have been made in islet β -cells bearing eIF2 α mutation that prevents its phosphorylation by PERK¹⁴⁵). It is thus of particular interest that *db/db* diabetic mice also show little evidence of PERK being active even in the face of ongoing high-level proinsulin

synthesis.²⁶⁹ And despite this active proinsulin biosynthesis, these are not conditions in which intracellular insulin levels are maintained—in fact there is dramatic β -cell insulin depletion, indicating significant functional defects along the pathway of proinsulin folding, trafficking, processing and storage.²⁷¹

Indeed, in WT mice trying to dispose of high glucose (continuous intravenous infusion of 277 μ moles/h) over a 4-day period, blood glucose is observed to rise within the normal range by 5 to 10 mg/dL each day, while circulating insulin in the bloodstream begins to decline between days 2, 3 and 4.²⁷² As extracellular glucose levels rise higher still, β -cells can continuously sustain a very high level of proinsulin biosynthesis.²⁷³ Only at the highest extracellular glucose levels consistent with full-blown diabetes (e.g., >500 mg/dL) do β -cells (at least rodent β -cells) finally show a tendency to decrease insulin mRNA accompanied by diminished proinsulin translation²⁷⁴ as well as the formation of ubiquitinated intracellular protein aggregates.²⁷⁵ While it is uncertain what proteins may accumulate in these aggregates, it is certain that newly synthesized proinsulin itself, when translated under high glucose conditions, forms protein complexes.²¹⁹ Thus, all evidence points to the notion that sustained hyperglycemia is a major pathological trigger for proinsulin misfolding.

6 | FUTURE PERSPECTIVES

Even as we uncover more details about the earliest events of preproinsulin biosynthesis and folding, many questions remain. Regarding our considerations of the posttranslational translocation process, more information is needed about the cytosolic chaperones that prevent untranslocated preproinsulin aggregation in order to maintain its posttranslational translocation-competence. We also believe to learn how cytosolic preproinsulin is guided to the ER membrane. Further, more information is needed to identify all the components at the ER membrane that first engage nascent cytosolic preproinsulin and presents the signal peptide n-region positive charge to the Sec61 translocon. Perhaps the most important work still needed on preproinsulin translocation is to uncover the pathophysiologic implications of the different translocation mechanisms. Specifically, it has been suggested that ER translocation efficiency may be regulated under physiological conditions, and dysregulated under pathological conditions. It is possible that under ER stress, translocation efficiency may decrease, potentially rerouting some secretory (and membrane) proteins for cytosolic degradation—a process termed “pre-emptive quality control.”^{276–278} Although pre-emptive quality control might reduce protein load into the ER, it might also result in proteotoxicity if these proteins are not efficiently cleared from the cytosol.²⁷⁶

The above considerations culminate in a key question: how long is an untranslocated preproinsulin molecule allowed to spend in the cytosol before it is deemed unable to complete translocation and is targeted for degradation, and what mechanism initiates the switch from translocation to degradation? Once this is known, it should be possible to test the question of whether ER stress causes accumulation of undegraded preproinsulin molecules and/or contributes to β -cell failure in type 1 or type 2 diabetes.^{159,215,261,279,280?}

Regarding our considerations of the proinsulin folding pathways, we are impressed by the remarkable experiments of nature, defined

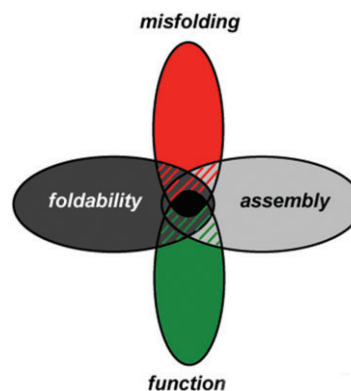


FIGURE 11 Evolution of insulin is constrained by multiple factors. Venn diagram illustrating influence of protein misfolding, foldability and assembly as well as the traditional importance of direct biological function at the receptor level

as MIDY mutations, to highlight structural determinants of foldability. Together, biochemical, biophysical and cell biological studies suggest that sequence variation in insulin is enjoyed by the intersection of multiple inter-dependent constraints (Figure 11). Yet salient overall questions remain, particularly with respect to the mechanism of native disulphide pairing. The structural differences between the native fold and competing meta-folds containing non-native disulphide bridges can be subtle. For example, mini-proinsulin (which contains a peptide bond between residues B29 and A1) refolds *in vitro* more efficiently than proinsulin²⁸¹ and yet in *S. cerevisiae* forms predominantly a meta-stable disulphide isomer that passes ER quality control and is secreted. These data suggest that the ER folding machinery of a eukaryotic cell can selectively target folding into a non-ground-state conformation; that is, global thermodynamic stability is not the critical parameter, which can thus lead to states of “stealth” misfolding, including the secretion of a protein caught in a kinetic folding trap. One future perspective is the development of refined assays to reveal such stealth proinsulin misfolding in pancreatic β -cells.

In considering the ER folding environment for proinsulin, there are many unanswered important interesting questions that require further study. In particular, why do generalized perturbations of ER proteostasis—in both human cases and murine genetic models^{139,140}—especially disrupt β -cell function and survival? One plausible explanation may be that as opposed to other cell types, glucose also stimulates proinsulin mRNA translation via activation of PP1 phosphatase to dephosphorylate eIF2 α .²⁸² As a result, increased accumulation of proinsulin in the ER may activate the UPR to a level that may promote β -cell dysfunction. Specifically, postprandial glucose excursions promote metabolic activity in β -cells that may generate ROS that accompanies ER stress.²⁸³ β -cells are particularly sensitive to ROS as they express low levels of antioxidant enzymes, such as catalase, glutathione peroxidase and superoxide dismutase,²⁸⁴ which may explain why antioxidants can limit β -cell failure in several mouse models.^{146,147,155}

Another interesting unanswered feature of disorders of ER stress response is the apparent link between type 2 diabetes and neurodegeneration, such as is seen animals with loss of function mutations in the ER chaperone *DNAJc3/p58^{IPK}*. Intriguingly, many nucleotide polymorphisms in genes identified for neurodegenerative diseases, such as

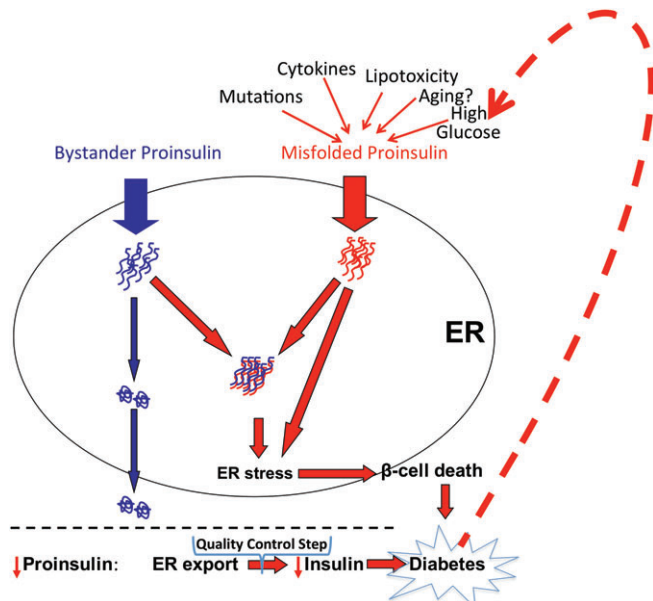


FIGURE 12 An hypothesis linking proinsulin misfolding to the pathogenesis of type 2 diabetes. Proinsulin must fold to become exported from the endoplasmic reticulum (ER) and make insulin (pathway in blue). Many factors may cause proinsulin misfolding (see text). Misfolded proinsulin molecules (in red) recruit bystander proinsulin molecules into complexes defective for ER export. Decreased export of proinsulin decreases insulin production and secretion leading to higher blood glucose. Hyperglycemia is a factor promoting additional biosynthesis of misfolded proinsulin creating a dangerous positive feedback loop that promotes diabetes. Ultimately, high level proinsulin misfolding can trigger ER stress and β -cell death

the involvement of PERK in progressive supranuclear palsy (PSP)²⁸⁵ and in Alzheimer's disease, may also impact β -cell function. These observations suggest a common sensitivity to ER dysfunction in both neurons and β -cells. Alternatively, could insulin signalling contribute to neurodegeneration? In the coming years, tissue-specific and temporally controlled genetic models should help to enlighten this field.

Regarding our consideration of proinsulin misfolding under diabetogenic conditions, there also remains much to learn. There is strong reason to believe that the time during which proinsulin is most susceptible to misfolding is immediately upon translocation, prior to the completion of chaperone- and oxidoreductase-assisted folding. During this period, WT proinsulin in healthy β -cells is known to form disulphide-linked proinsulin complexes.²⁸⁶ Ultimately, it will be important to develop assays that can establish whether such complexes that persist for more than a few minutes after synthesis are true folding intermediates from which native proinsulin is still recoverable—or do they represent folded states that are irretrievably “off pathway”?

Finally, additional critical studies are still needed to directly examine non-mutant proinsulin folding status in “garden variety” type 2 diabetes, both in rodent models and in humans. Based on the foregoing considerations in this review, we present an hypothesis in Figure 12. We suggest that misfolded proinsulin beyond a critical threshold level impairs the ER export of bystander proinsulin molecules, similar to what occurs in MIDY. A decrease of proinsulin ER export, or absolute proinsulin levels (through ERAD and autophagy) limits proinsulin available for

insulin production. The ensuing insulin deficiency leads to hyperglycemia which itself—along with other potential factors, promote further proinsulin misfolding, resulting in an unfortunate positive feedback loop (Figure 12). We hypothesize that the accumulation of misfolded proinsulin contributes to β -cell ER stress, and in conjunction with the glucolipotoxicity of diabetes, contributes to pancreatic β -cell death.

ACKNOWLEDGEMENTS

We thank the numerous collaborators of the Liu, Weiss, Kaufman and Arvan laboratories who have contributed to the work cited herein. We are grateful to William and Delores Brehm for their generous support leading to the creation of the Brehm Center for Diabetes Research at the University of Michigan. M.L. is supported by R01DK111174, R24DK110973, the U-M Protein Folding Diseases Initiative, National Natural Science Foundation of China 81370895, 81570699 and 81620108004, and Tianjin Municipal Science and Technology Commission 17ZXMFSY00150. M.A.W. is supported by R01DK040949 and R01DK079233. R.J.K. is supported by R24DK110973 and R01DK113171. P.A. is supported by NIH R01DK48280, R01DK111174, R24DK110973 and the U-M Protein Folding Diseases Initiative.

Conflict of interest

None declared.

Author contributions

All authors conceptualized the contents and wrote, reviewed, edited and approved this manuscript.

ORCID

Michael A. Weiss <http://orcid.org/0000-0003-1325-1610>

Anoop Arunagiri <http://orcid.org/0000-0001-9839-1860>

Randal J. Kaufman <http://orcid.org/0000-0003-4277-316X>

Peter Arvan <http://orcid.org/0000-0002-4007-8799>

REFERENCES

- Jainandusing S, van Miert JN, Rietveld T, Darcos Wattimena JL, Sijbrands EJG, de Rooij FWM. A stable isotope method for in vivo assessment of human insulin synthesis and secretion. *Acta Diabetol.* 2016;53:935-944.
- Gold G, Gishizky ML, Grodsky GM. Evidence that glucose “marks” beta cells resulting in preferential release of newly synthesized insulin. *Science.* 1982;218:56-58.
- Papa FR. Endoplasmic reticulum stress, pancreatic beta-cell degeneration, and diabetes. *Cold Spring Harb Perspect Med.* 2012;2:a007666.
- Hou JC, Min L, Pessin JE. Insulin granule biogenesis, trafficking and exocytosis. *Vitam Horm.* 2009;80:473-506.
- Arvan P, Castle D. Sorting and storage during secretory granule biogenesis: looking backward and looking forward. *Biochem J.* 1998;332:593-610.
- Sugawara T, Kano F, Murata M. Rab2A is a pivotal switch protein that promotes either secretion or ER-associated degradation of (pro) insulin in insulin-secreting cells. *Sci Rep.* 2014;4:6952.
- Goginashvili A, Zhang Z, Erbs E, et al. Insulin granules. Insulin secretory granules control autophagy in pancreatic beta cells. *Science.* 2015;347:878-882.

8. Schuit FC, Kiekens R, Pipeleers DG. Measuring the balance between insulin synthesis and insulin release. *Biochem Biophys Res Commun.* 1991;178:1182-1187.
9. Weiss MA. Proinsulin and the genetics of diabetes mellitus. *J Biol Chem.* 2009;284:19159-19163.
10. Liu M, Wan ZL, Chu YC, et al. Crystal structure of a "nonfoldable" insulin: impaired folding efficiency despite native activity. *J Biol Chem.* 2009;284:35259-35272.
11. Lee AH, Heidtman K, Hotamisligil GS, Glimcher LH. Dual and opposing roles of the unfolded protein response regulated by IRE1alpha and XBP1 in proinsulin processing and insulin secretion. *Proc Natl Acad Sci U S A.* 2011;108:8885-8890.
12. Wortham M, Sander M. Mechanisms of beta-cell functional adaptation to changes in workload. *Diabetes Obes Metab.* 2016;18(Suppl. 1): 78-86.
13. Tanabe K, Amo-Shiino K, Hatanaka M, Tanizawa Y. Interorgan crosstalk contributing to beta-cell dysfunction. *J Diabetes Res.* 2017; 2017:3605178.
14. Wang J, Takeuchi T, Tanaka S, et al. A mutation in the insulin 2 gene induces diabetes with severe pancreatic beta-cell dysfunction in the Mody mouse. *J Clin Invest.* 1999;103:27-37.
15. Herbach N, Rathkolb B, Kemter E, et al. Dominant-negative effects of a novel mutated Ins2 allele causes early-onset diabetes and severe beta-cell loss in Munich Ins2C95S mutant mice. *Diabetes.* 2007;56: 1268-1276.
16. Kanekura K, Ishigaki S, Merksamer PI, Papa FR, Urano F. Establishment of a system for monitoring endoplasmic reticulum redox state in mammalian cells. *Lab Invest.* 2013;93:1254-1258.
17. Merksamer PI, Trusina A, Papa FR. Real-time redox measurements during endoplasmic reticulum stress reveal interlinked protein folding functions. *Cell.* 2008;135:933-947.
18. Tsunoda S, Avezov E, Zyryanova A, et al. Intact protein folding in the glutathione-depleted endoplasmic reticulum implicates alternative protein thiol reductants. *Elife.* 2014;3:e03421.
19. Liu M, Wright J, Guo H, Xiong Y, Arvan P. Proinsulin entry and transit through the endoplasmic reticulum in pancreatic beta cells. *Vitam Horm.* 2014;95:35-62.
20. Dodson G, Steiner D. The role of assembly in insulin's biosynthesis. *Curr Opin Struct Biol.* 1998;8:189-194.
21. Akopian D, Shen K, Zhang X, Shan SO. Signal recognition particle: an essential protein-targeting machine. *Annu Rev Biochem.* 2013;82: 693-721.
22. Okun MM, Shields D. Translocation of preproinsulin across the endoplasmic reticulum membrane. The relationship between nascent polypeptide size and extent of signal recognition particle-mediated inhibition of protein synthesis. *J Biol Chem.* 1992;267:11476-11482.
23. Eskridge EM, Shields D. Cell-free processing and segregation of insulin precursors. *J Biol Chem.* 1983;258:11487-11491.
24. Patzelt C, Labrecque AD, Duguid JR, et al. Detection and kinetic behavior of preproinsulin in pancreatic islets. *Proc Natl Acad Sci U S A.* 1978;75:1260-1264.
25. Liu M, Sun J, Cui J, et al. INS-gene mutations: from genetics and beta cell biology to clinical disease. *Mol Aspects Med.* 2015;42:3-18.
26. Guo H, Sun J, Li X, et al. Positive charge in the n-region of the signal peptide contributes to efficient post-translational translocation of small secretory preproteins. *J Biol Chem.* 2018;293:1899-1907.
27. Yan J, Jiang F, Zhang R, et al. Whole-exome sequencing identifies a novel INS mutation causative of maturity-onset diabetes of the young 10. *J Mol Cell Biol.* 2017;9:376-383.
28. Ingolia NT, Lareau LF, Weissman JS. Ribosome profiling of mouse embryonic stem cells reveals the complexity and dynamics of mammalian proteomes. *Cell.* 2011;147:789-802.
29. Guo H, Xiong Y, Witkowski P, et al. Inefficient translocation of preproinsulin contributes to pancreatic beta cell failure and late-onset diabetes. *J Biol Chem.* 2014;289:16290-16302.
30. Lakkaraju AK, Thankappan R, Mary C, Garrison JL, Taunton J, Strub K. Efficient secretion of small proteins in mammalian cells relies on Sec62-dependent posttranslational translocation. *Mol Biol Cell.* 2012;23:2712-2722.
31. Liu M, Lara-Lemus R, Shan SO, et al. Impaired cleavage of preproinsulin signal peptide linked to autosomal-dominant diabetes. *Diabetes.* 2012;61:828-837.
32. Liu M, Hodish I, Haataja L, et al. Proinsulin misfolding and diabetes: mutant INS gene-induced diabetes of youth. *Trends Endocrinol Metab.* 2010;21:652-659.
33. Johnson N, Powis K, High S. Post-translational translocation into the endoplasmic reticulum. *Biochim Biophys Acta.* 2013;1833: 2403-2409.
34. Ngosuwana J, Wang NM, Fung KL, Chirico WJ. Roles of cytosolic Hsp70 and Hsp40 molecular chaperones in post-translational translocation of presecretory proteins into the endoplasmic reticulum. *J Biol Chem.* 2003;278:7034-7042.
35. Garcia PD, Walter P. Full-length prepro-alpha-factor can be translocated across the mammalian microsomal membrane only if translation has not terminated. *J Cell Biol.* 1988;106:1043-1048.
36. Shao S, Hegde RS. A calmodulin-dependent translocation pathway for small secretory proteins. *Cell.* 2011;147:1576-1588.
37. Johnson N, Vilardi F, Lang S, Leznicki P, Zimmermann R, High S. TRC40 can deliver short secretory proteins to the Sec61 translocon. *J Cell Sci.* 2012;125:3612-3620.
38. Plath K, Mothes W, Wilkinson BM, Stirling CJ, Rapoport TA. Signal sequence recognition in posttranslational protein transport across the yeast ER membrane. *Cell.* 1998;94:795-807.
39. Meyer HA, Grau H, Kraft R, et al. Mammalian Sec61 is associated with Sec62 and Sec63. *J Biol Chem.* 2000;275:14550-14557.
40. Hartmann E, Gorlich D, Kostka S, et al. A tetrameric complex of membrane proteins in the endoplasmic reticulum. *Eur J Biochem.* 1993;214:375-381.
41. Hartmann E, Prehn S. The N-terminal region of the alpha-subunit of the TRAP complex has a conserved cluster of negative charges. *FEBS Lett.* 1994;349:324-326.
42. Fons RD, Bogert BA, Hegde RS. Substrate-specific function of the translocon-associated protein complex during translocation across the ER membrane. *J Cell Biol.* 2003;160:529-539.
43. Webb GC, Akbar MS, Zhao C, Steiner DF. Expression profiling of pancreatic beta cells: glucose regulation of secretory and metabolic pathway genes. *Proc Natl Acad Sci U S A.* 2000;97:5773-5778.
44. DIAbetes Genetics Replication And Meta-analysis (DIAGRAM) Consortium, Asian Genetic Epidemiology Network Type 2 Diabetes (AGEN-T2D) Consortium, South Asian Type 2 Diabetes (SAT2D) Consortium, et al. Genome-wide trans-ancestry meta-analysis provides insight into the genetic architecture of type 2 diabetes susceptibility. *Nat Genet.* 2014;46:234-244.
45. Kasuga Y, Hata K, Tajima A, et al. Association of common polymorphisms with gestational diabetes mellitus in Japanese women: a case-control study. *Endocr J.* 2017;64:463-475.
46. Levine CG, Mitra D, Sharma A, Smith CL, Hegde RS. The efficiency of protein compartmentalization into the secretory pathway. *Mol Biol Cell.* 2005;16:279-291.
47. Hegde RS, Bernstein HD. The surprising complexity of signal sequences. *Trends Biochem Sci.* 2006;31:563-571.
48. Frith MC, Forrest AR, Nourbakhsh E, et al. The abundance of short proteins in the mammalian proteome. *PLoS Genet.* 2006;2:e52.
49. Shaffer KL, Sharma A, Snapp EL, Hegde RS. Regulation of protein compartmentalization expands the diversity of protein function. *Dev Cell.* 2005;9:545-554.
50. Rane NS, Chakrabarti O, Feigenbaum L, Hegde RS. Signal sequence insufficiency contributes to neurodegeneration caused by transmembrane prion protein. *J Cell Biol.* 2010;188:515-526.
51. Goder V, Junne T, Spiess M. Sec61p contributes to signal sequence orientation according to the positive-inside rule. *Mol Biol Cell.* 2004; 15:1470-1478.
52. Choo KH, Ranganathan S. Flanking signal and mature peptide residues influence signal peptide cleavage. *BMC Bioinformatics.* 2008;9 (Suppl. 12):S15.
53. Pierce SB, Costa M, Wisotzky R, et al. Regulation of DAF-2 receptor signaling by human insulin and ins-1, a member of the unusually large and diverse *C. elegans* insulin gene family. *Genes Dev.* 2001;15: 672-686.

54. Hua QX, Nakagawa SH, Wilken J, et al. A divergent INS protein in *Caenorhabditis elegans* structurally resembles human insulin and activates the human insulin receptor. *Genes Dev.* 2003;17:826-831.
55. Sajid W, Kulahin N, Schluckebier G, et al. Structural and biological properties of the *Drosophila* insulin-like peptide 5 show evolutionary conservation. *J Biol Chem.* 2011;286:661-673.
56. Baldwin TO, Ziegler MM, Chaffotte AF, Goldberg ME. Contribution of folding steps involving the individual subunits of bacterial luciferase to the assembly of the active heterodimeric enzyme. *J Biol Chem.* 1993;268:10766-10772.
57. Huang Y, Liang Z, Feng Y. The relationship between the connecting peptide of recombinant single chain insulin and its biological function. *Sci China C Life Sci.* 2001;44:593-600.
58. Hua QX, Narhi L, Jia W, et al. Native and non-native structure in a protein-folding intermediate: spectroscopic studies of partially reduced IGF-I and an engineered alanine model. *J Mol Biol.* 1996; 259:297-313.
59. Hober S, Forsberg G, Palm G, Hartmanis M, Nilsson B. Disulfide exchange folding of insulin-like growth factor I. *Biochemistry.* 1992; 31:1749-1756.
60. Miller JA, Narhi LO, Hua QX, et al. Oxidative refolding of insulin-like growth factor 1 yields two products of similar thermodynamic stability: a bifurcating protein-folding pathway. *Biochemistry.* 1993;32: 5203-5213.
61. Qiao ZS, Guo ZY, Feng YM. Putative disulfide-forming pathway of porcine insulin precursor during its refolding *in vitro*. *Biochemistry.* 2001;40:2662-2668.
62. Yang Y, Hua QX, Liu J, et al. Solution structure of proinsulin: connecting domain flexibility and prohormone processing. *J Biol Chem.* 2010;285:7847-7851.
63. Creighton TE. Protein folding coupled to disulphide bond formation. *Biol Chem.* 1997;378:731-744.
64. Dill KA, Chan HS. From Levinthal to pathways to funnels. *Nat Struct Biol.* 1997;4:10-19.
65. Onuchic JN, Luthey-Schulten Z, Wolynes PG. Theory of protein folding: the energy landscape perspective. *Annu Rev Phys Chem.* 1997; 48:545-600.
66. Oliveberg M, Wolynes PG. The experimental survey of protein-folding energy landscapes. *Q Rev Biophys.* 2005;38:245-288.
67. Qiao ZS, Min CY, Hua QX, Weiss MA, Feng YM. *In vitro* refolding of human proinsulin. Kinetic intermediates, putative disulfide-forming pathway, folding initiation site, and potential role of C-peptide in folding process. *J Biol Chem.* 2003;278:17800-17809.
68. Narhi LO, Hua QX, Arakawa T, et al. Role of native disulfide bonds in the structure and activity of insulin-like growth factor 1: genetic models of protein-folding intermediates. *Biochemistry.* 1993;32: 5214-5221.
69. Hober S, Hansson A, Uhlen M, Nilsson B. Folding of insulin-like growth factor I is thermodynamically controlled by insulin-like growth factor binding protein. *Biochemistry.* 1994;33:6758-6761.
70. Hober S, Uhlen M, Nilsson B. Disulfide exchange folding of disulfide mutants of insulin-like growth factor I *in vitro*. *Biochemistry.* 1997;36: 4616-4622.
71. Milner SJ, Carver JA, Ballard FJ, Francis GL. Probing the disulfide folding pathway of insulin-like growth factor-I. *Biotechnol Bioeng.* 1999;62:693-703.
72. Hua QX, Hu SQ, Frank BH, et al. Mapping the functional surface of insulin by design: structure and function of a novel A-chain analogue. *J Mol Biol.* 1996;264:390-403.
73. Dai Y, Tang JG. Characteristic, activity and conformational studies of [A6-Ser, A11-Ser]-insulin. *Biochim Biophys Acta.* 1996;1296:63-68.
74. Weiss MA, Hua QX, Jia W, Chu YC, Wang RY, Katsoyannis PG. Hierarchical protein "un-design": insulin's intrachain disulfide bridge tethers a recognition α -helix. *Biochemistry.* 2000;39:15429-15440.
75. Guo ZY, Feng YM. Effects of cysteine to serine substitutions in the two intra-A-chain disulfide bonds of insulin. *Biol Chem.* 2001;382: 443-448.
76. Feng Y, Liu D, Wang J. Native-like partially folded conformations and folding process revealed in the N-terminal large fragments of staphylococcal nuclease: a study by NMR spectroscopy. *J Mol Biol.* 2003; 330:821-837.
77. Jia XY, Guo ZY, Wang Y, Xu Y, Duan SS, Feng YM. Peptide models of four possible insulin folding intermediates with two disulfides. *Protein Sci.* 2003;12:2412-2419.
78. Yan H, Guo ZY, Gong XW, Xi D, Feng YM. A peptide model of insulin folding intermediate with one disulfide. *Protein Sci.* 2003;12: 768-775.
79. Hua QX, Mayer J, Jia W, Zhang J, Weiss MA. The folding nucleus of the insulin superfamily: a flexible peptide model foreshadows the native state. *J Biol Chem.* 2006;281:28131-28142.
80. Hua QX, Chu YC, Jia W, et al. Mechanism of insulin chain combination. Asymmetric roles of A-chain α -helices in disulfide pairing. *J Biol Chem.* 2002;277:43443-43453.
81. Hua QX, Jia W, Frank BH, Phillips NB, Weiss MA. A protein caught in a kinetic trap: structures and stabilities of insulin disulfide isomers. *Biochemistry.* 2002;41:14700-14715.
82. Hua QX, Gozani SN, Chance RE, Hoffmann JA, Frank BH, Weiss MA. Structure of a protein in a kinetic trap. *Nat Struct Biol.* 1995;2: 129-138.
83. Hua QX, Nakagawa SH, Jia W, et al. Hierarchical protein folding: asymmetric unfolding of an insulin analogue lacking the A7-B7 inter-chain disulfide bridge. *Biochemistry.* 2001;40:12299-12311.
84. Chu YC, Burke GT, Chanley JD, Katsoyannis PG. Possible involvement of the A20-A21 peptide bond in the expression of the biological activity of insulin. 2. [21-Asparagine diethylamide-A]insulin. *Biochemistry.* 1987;26:6972-6975.
85. Kristensen C, Kjeldsen T, Wiberg FC, et al. Alanine scanning mutagenesis of insulin. *J Biol Chem.* 1997;272:12978-12983.
86. Nakagawa SH, Hua QX, Hu SQ, et al. Chiral mutagenesis of insulin. Contribution of the B20-B23 β -turn to activity and stability. *J Biol Chem.* 2006;281:22386-22396.
87. Gill R, Verma C, Wallach B, et al. Modelling of the disulphide-swapped isomer of human insulin-like growth factor-1: implications for receptor binding. *Protein Eng.* 1999;12:297-303.
88. Chen Y, You Y, Jin R, Guo ZY, Feng YM. Sequences of B-chain/domain 1-10/1-9 of insulin and insulin-like growth factor 1 determine their different folding behavior. *Biochemistry.* 2004;43: 9225-9233.
89. Huang QL, Zhao J, Tang YH, Shao SQ, Xu GJ, Feng YM. The sequence determinant causing different folding behaviors of insulin and insulin-like growth factor-1. *Biochemistry.* 2007;46:218-224.
90. Liu M, Ramos-Castaneda J, Arvan P. Role of the connecting peptide in insulin biosynthesis. *J Biol Chem.* 2003;278:14798-14805.
91. Zhang BY, Liu M, Arvan P. Behavior in the eukaryotic secretory pathway of insulin-containing fusion proteins and single-chain insulins bearing various B-chain mutations. *J Biol Chem.* 2003;278: 3687-3693.
92. Liu M, Li Y, Cavener D, Arvan P. Proinsulin disulfide maturation and misfolding in the endoplasmic reticulum. *J Biol Chem.* 2005;280: 13209-13212.
93. Hua QX, Liu M, Hu SQ, Jia W, Arvan P, Weiss MA. A conserved histidine in insulin is required for the foldability of human proinsulin. Structure and function of an Ala^{B5} analog. *J Biol Chem.* 2006;281: 24889-24899.
94. Liu M, Hodish I, Rhodes CJ, Arvan P. Proinsulin maturation, misfolding, and proteotoxicity. *Proc Natl Acad Sci U S A.* 2007;104: 15841-15846.
95. Liu M, Hua Q-X, Hu S-Q, et al. Deciphering the hidden informational content of protein sequences: foldability of proinsulin hinges on a flexible arm that is dispensable in the mature hormone. *J Biol Chem.* 2010;285:30989-31001.
96. Baker EN, Blundell TL, Cutfield JF, et al. The structure of 2Zn pig insulin crystals at 1.5 Å resolution. *Philos Trans R Soc Lond B Biol Sci.* 1988;319:369-456.
97. Weiss MA, Lawrence MC. Structural changes in the B chain of insulin on receptor binding and their evolutionary implications. *Diabetes Obes Metab.* 2018; this issue.
98. Adams MJ, Blundell TL, Dodson EJ, et al. Structure of rhombohedral 2 zinc insulin crystals. *Nature.* 1969;224:491-495.
99. Pandeyarajan V, Phillips NB, Cox GP, et al. Biophysical optimization of a therapeutic protein by non-standard mutagenesis. Studies of an iodo-insulin derivative. *J Biol Chem.* 2014;289:23367-23381.

100. Xu B, Huang K, Chu YC, et al. Decoding the cryptic active conformation of a protein by synthetic photoscanning: insulin inserts a detachable arm between receptor domains. *J Biol Chem.* 2009;284:14597-14608.
101. Menting JG, Whittaker J, Margetts MB, et al. How insulin engages its primary binding site on the insulin receptor. *Nature.* 2013;493:241-245.
102. Pandeyarajan V, Phillips NB, Rege NK, Lawrence MC, Whittaker J, Weiss MA. Contribution of Tyr^{B26} to the function and stability of insulin. Structure-activity relationships at a conserved hormone-receptor interface. *J Biol Chem.* 2016;291:12978-12990.
103. Menting JG, Whittaker J, Margetts MB, et al. How insulin engages its primary binding site on the insulin receptor surface. *Nature.* 2013;493:241-245.
104. Mirmira RG, Nakagawa SH, Tager HS. Importance of the character and configuration of residues B24, B25, and B26 in insulin-receptor interactions. *J Biol Chem.* 1991;266:1428-1436.
105. Hua QX, Shoelson SE, Kochoyan M, Weiss MA. Receptor binding redefined by a structural switch in a mutant human insulin. *Nature.* 1991;354:238-241.
106. Hua QX, Xu B, Huang K, et al. Enhancing the activity of insulin by stereospecific unfolding. Conformational life cycle of insulin and its evolutionary origins. *J Biol Chem.* 2009;284:14586-14596.
107. Huang K, Xu B, Hu SQ, et al. How insulin binds: the B-chain α -helix contacts the L1 β -helix of the insulin receptor. *J Mol Biol.* 2004;341:529-550.
108. Xu B, Hu SQ, Chu YC, et al. Diabetes-associated mutations in insulin: consecutive residues in the B chain contact distinct domains of the insulin receptor. *Biochemistry.* 2004;43:8356-8372.
109. Stoy J, Edghill EL, Flanagan SE, et al. Insulin gene mutations as a cause of permanent neonatal diabetes. *Proc Natl Acad Sci U S A.* 2007;104:15040-15044.
110. Shoelson S, Fickova M, Haneda M, et al. Identification of a mutant human insulin predicted to contain a serine-for-phenylalanine substitution. *Proc Natl Acad Sci U S A.* 1983;80:7390-7394.
111. Hua QX, Shoelson SE, Inouye K, Weiss MA. Paradoxical structure and function in a mutant human insulin associated with diabetes mellitus. *Proc Natl Acad Sci U S A.* 1993;90:582-586.
112. Nanjo K, Sanke T, Miyano M, et al. Diabetes due to secretion of a structurally abnormal insulin (insulin Wakayama). Clinical and functional characteristics of [Leu^{A3}] insulin. *J Clin Invest.* 1986;77:514-519.
113. Shoelson S, Haneda M, Blix P, et al. Three mutant insulins in man. *Nature.* 1983;302:540-543.
114. Shoelson SE, Polonsky KS, Zeidler A, Rubenstein AH, Tager HS. Human insulin B24 (Phe[®]Ser), secretion and metabolic clearance of the abnormal insulin in man and in a dog model. *J Clin Invest.* 1984;73:1351-1358.
115. Haneda M, Polonsky KS, Bergenstal RM, et al. Familial hyperinsulinemia due to a structurally abnormal insulin. *N Engl J Med.* 1984;310:1288-1294.
116. Stoy J, Steiner DF, Park SY, Ye H, Philipson LH, Bell GI. Clinical and molecular genetics of neonatal diabetes due to mutations in the insulin gene. *Rev Endocr Metab Disord.* 2010;11:205-215.
117. Molven A, Ringdal M, Nordbo AM, et al. the Norwegian Childhood Diabetes Study Group, Mutations in the insulin gene can cause MODY and autoantibody-negative type 1 diabetes. *Diabetes.* 2008;57:1131-1135.
118. Hu SQ, Burke GT, Schwartz GP, Ferderigos N, Ross JB, Katsoyannis PG. Steric requirements at position B12 for high biological activity in insulin. *Biochemistry.* 1993;32:2631-2635.
119. Colombo C, Porzio O, Liu M, et al. Early Onset Diabetes Study Group of the Italian Society of Pediatric Endocrinology and Diabetes (SIEDP). Seven mutations in the human insulin gene linked to permanent neonatal/infancy-onset diabetes mellitus. *J Clin Invest.* 2008;118:2148-2156.
120. Olsen HB, Ludvigsen S, Kaarsholm NC. Solution structure of an engineered insulin monomer at neutral pH. *Biochemistry.* 1996;35:8836-8845.
121. Blundell TL, Cutfield JF, Cutfield SM, et al. Atomic positions in rhombohedral 2-zinc insulin crystals. *Nature.* 1971;231:506-511.
122. Weiss MA. The structure and function of insulin: decoding the TR transition. In: Litwack G, ed. *Vitamins and Hormones: Advances in Research and Application.* Burlington, ON: Academic Press; 2009:33-49.
123. Derewenda U, Derewenda Z, Dodson EJ, et al. Phenol stabilizes more helix in a new symmetrical zinc insulin hexamer. *Nature.* 1989;338:594-596.
124. Nakagawa SH, Zhao M, Hua QX, et al. Chiral mutagenesis of insulin. Foldability and function are inversely regulated by a stereospecific switch in the B chain. *Biochemistry.* 2005;44:4984-4999.
125. Hua QX, Nakagawa SH, Hu SQ, Jia W, Wang S, Weiss MA. Toward the active conformation of insulin. Stereospecific modulation of a structural switch in the B chain. *J Biol Chem.* 2006;281:24900-24909.
126. Wan Z, Huang K, Whittaker J, Weiss MA. The structure of a mutant insulin uncouples receptor binding from protein allostery. An electrostatic block to the TR transition. *J Biol Chem.* 2008;283:21198-21210.
127. Noiva R. Protein disulfide isomerase: the multifunctional redox chaperone of the endoplasmic reticulum. *Semin Cell Dev Biol.* 1999;10:481-493.
128. Betts S, King J. There's a right way and a wrong way: *in vivo* and *in vitro* folding, misfolding and subunit assembly of the P22 tailspike. *Structure.* 1999;7:R131-R139.
129. Weigele PR, Haase-Pettingell C, Campbell PG, Gossard DC, King J. Stalled folding mutants in the triple β -helix domain of the phage P22 tailspike adhesin. *J Mol Biol.* 2005;354:1103-1117.
130. Weiss MA, Nakagawa SH, Jia W, et al. Protein structure and the spandrels of San Marco: insulin's receptor-binding surface is buttressed by an invariant leucine essential for protein stability. *Biochemistry.* 2002;41:809-819.
131. Du X, Tang JG. Hydroxyl group of insulin A19Tyr is essential for receptor binding: studies on (A19Phe)insulin. *Biochem Mol Biol Int.* 1998;45:255-260.
132. Liu M, Wan ZL, Chu YC, et al. Crystal structure of a "non-foldable" insulin: impaired folding efficiency and ER stress despite native activity. *J Biol Chem.* 2009;284:35259-35272.
133. Ortolani F, Piccinno E, Grasso V, et al. Diabetes associated with dominant insulin gene mutations: outcome of 24-month, sensor-augmented insulin pump treatment. *Acta Diabetol.* 2016;53:499-501.
134. Rutkowski DT, Kaufman RJ. A trip to the ER: coping with stress. *Trends Cell Biol.* 2004;14:20-28.
135. Scheuner D, Kaufman RJ. The unfolded protein response: a pathway that links insulin demand with beta-cell failure and diabetes. *Endocr Rev.* 2008;29:317-333.
136. Han J, Kaufman RJ. Physiological/pathological ramifications of transcription factors in the unfolded protein response. *Genes Dev.* 2017;31:1417-1438.
137. Bertolotti A, Zhang Y, Hendershot LM, Harding HP, Ron D. Dynamic interaction of BiP and ER stress transducers in the unfolded-protein response. *Nat Cell Biol.* 2000;2:326-332.
138. Shen J, Chen X, Hendershot L, Prywes R. ER stress regulation of ATF6 localization by dissociation of BiP/GRP78 binding and unmasking of Golgi localization signals. *Dev Cell.* 2002;3:99-111.
139. Harding HP, Zeng H, Zhang Y, et al. Diabetes mellitus and exocrine pancreatic dysfunction in *perk*^{-/-} mice reveals a role for translational control in secretory cell survival. *Mol Cell.* 2001;7:1153-1163.
140. Zhang W, Feng D, Li Y, Iida K, McGrath B, Cavener DR. PERK EIF2AK3 control of pancreatic beta cell differentiation and proliferation is required for postnatal glucose homeostasis. *Cell Metab.* 2006;4:491-497.
141. Sowers CR, Wang R, Bourne RA, et al. The protein kinase PERK/EIF2AK3 regulates proinsulin processing not via protein synthesis but by controlling endoplasmic reticulum chaperones. *J Biol Chem.* 2018;293:5134-5149.
142. Harding HP, Zhang Y, Ron D. Protein translation and folding are coupled by an endoplasmic-reticulum-resident kinase. *Nature.* 1999;397:271-274.

143. Yong J, Grankvist N, Han J, Kaufman RJ. Eukaryotic translation initiation factor 2 α phosphorylation as a therapeutic target in diabetes. *Expert Rev Endocrinol Metab.* 2014;9:345-356.
144. Scheuner D, Song B, McEwen E, et al. Translational control is required for the unfolded protein response and in vivo glucose homeostasis. *Mol Cell.* 2001;7:1165-1176.
145. Scheuner D, Vander Mierde D, Song B, et al. Control of mRNA translation preserves reticulum function in beta cells and maintains glucose homeostasis. *Nat Med.* 2005;11:757-764.
146. Back SH, Scheuner D, Han J, et al. Translation attenuation through eIF2 α phosphorylation prevents oxidative stress and maintains the differentiated state in beta cells. *Cell Metab.* 2009;10:13-26.
147. Han J, Song B, Kim J, et al. Antioxidants complement the requirement for protein chaperone function to maintain beta-cell function and glucose homeostasis. *Diabetes.* 2015;64:2892-2904.
148. Oyadomari S, Koizumi A, Takeda K, et al. Targeted disruption of the CHOP gene delays endoplasmic reticulum stress-mediated diabetes. *J Clin Invest.* 2002;109:525-532.
149. Song B, Scheuner D, Ron D, Pennathur S, Kaufman RJ. Chop deletion reduces oxidative stress, improves beta cell function, and promotes cell survival in multiple mouse models of diabetes. *J Clin Invest.* 2008;118:3378-3389.
150. Lee K, Tirasophon W, Shen X, et al. IRE1-mediated unconventional mRNA splicing and S2P-mediated ATF6 cleavage merge to regulate XBP1 in signaling the unfolded protein response. *Genes Dev.* 2002;16:452-466.
151. Wu J, Rutkowski DT, Dubois M, et al. ATF6 α optimizes long-term endoplasmic reticulum function to protect cells from chronic stress. *Dev Cell.* 2007;13:351-364.
152. Odisho T, Zhang L, Volchuk A. ATF6 β regulates the Wfs1 gene and has a cell survival role in the ER stress response in pancreatic beta-cells. *Exp Cell Res.* 2015;330:111-122.
153. Lee AH, Iwakoshi NN, Glimcher LH. XBP-1 regulates a subset of endoplasmic reticulum resident chaperone genes in the unfolded protein response. *Mol Cell Biol.* 2003;23:7448-7459.
154. Lee AH, Scapa EF, Cohen DE, Glimcher LH. Regulation of hepatic lipogenesis by the transcription factor XBP1. *Science.* 2008;320:1492-1496.
155. Hassler JR, Scheuner DL, Wang S, et al. The IRE1 α /XBP1s pathway is essential for the glucose response and protection of beta cells. *PLoS Biol.* 2015;13:e1002277.
156. Usui M, Yamaguchi S, Tanji Y, et al. Atf6 α -null mice are glucose intolerant due to pancreatic beta-cell failure on a high-fat diet but partially resistant to diet-induced insulin resistance. *Metabolism.* 2012;61:1118-1128.
157. Engin F, Yermalovich A, Nguyen T, et al. Restoration of the unfolded protein response in pancreatic beta cells protects mice against type 1 diabetes. *Sci Transl Med.* 2013;5:211ra156.
158. Sharma RB, O'Donnell AC, Stamateris RE, et al. Insulin demand regulates beta cell number via the unfolded protein response. *J Clin Invest.* 2015;125:3831-3846.
159. Back SH, Kaufman RJ. Endoplasmic reticulum stress and type 2 diabetes. *Annu Rev Biochem.* 2012;81:767-793.
160. Yoshida H, Matsui T, Hosokawa N, Kaufman RJ, Nagata K, Mori K. A time-dependent phase shift in the mammalian unfolded protein response. *Dev Cell.* 2003;4:265-271.
161. Oda Y, Okada T, Yoshida H, Kaufman RJ, Nagata K, Mori K. Derlin-2 and Derlin-3 are regulated by the mammalian unfolded protein response and are required for ER-associated degradation. *J Cell Biol.* 2006;172:383-393.
162. Yamamoto K, Sato T, Matsui T, et al. Transcriptional induction of mammalian ER quality control proteins is mediated by single or combined action of ATF6 α and XBP1. *Dev Cell.* 2007;13:365-376.
163. Qi L, Tsai B, Arvan P. New insights into the physiological role of endoplasmic reticulum-associated degradation. *Trends Cell Biol.* 2017;27:430-440.
164. Haataja L, Manickam N, Soliman A, Tsai B, Liu M, Arvan P. Disulfide mispairing during proinsulin folding in the endoplasmic reticulum. *Diabetes.* 2016;65:1050-1060.
165. Rutkevich LA, Cohen-Doyle MF, Brockmeier U, Williams DB. Functional relationship between protein disulfide isomerase family members during the oxidative folding of human secretory proteins. *Mol Biol Cell.* 2010;21:3093-3105.
166. Gorasia DG, Dudek NL, Safavi-Hemami H, et al. A prominent role of PDI α 6 in processing of misfolded proinsulin. *Biochim Biophys Acta.* 2016;1864:715-723.
167. Lan H, Rabaglia ME, Schueler KL, Mata C, Yandell BS, Attie AD. Distinguishing covariation from causation in diabetes: a lesson from the protein disulfide isomerase mRNA abundance trait. *Diabetes.* 2004;53:240-244.
168. Iida KI, Miyaishi O, Iwata Y, Kozaki KI, Matsuyama M, Saga S. Distinct distribution of protein disulfide isomerase family proteins in rat tissues. *J Histochem Cytochem.* 1996;44:751-759.
169. Lu H, Yang Y, Allister EM, Wijesekara N, Wheeler MB. The identification of potential factors associated with the development of type 2 diabetes: a quantitative proteomics approach. *Mol Cell Proteomics.* 2008;7:1434-1451.
170. Yang K, Gotzmann J, Kuny S, Huang H, Sauve Y, Chan CB. Five stages of progressive beta-cell dysfunction in the laboratory Nile rat model of type 2 diabetes. *J Endocrinol.* 2016;229:343-356.
171. Feng D, Wei J, Gupta S, McGrath BC, Cavener DR. Acute ablation of PERK results in ER dysfunctions followed by reduced insulin secretion and cell proliferation. *BMC Cell Biol.* 2009;10:61.
172. Winter J, Gleiter S, Klappa P, Lilie H. Protein disulfide isomerase isomerizes non-native disulfide bonds in human proinsulin independent of its peptide-binding activity. *Protein Sci.* 2011;20:588-596.
173. Winter J, Klappa P, Freedman RB, Lilie H, Rudolph R. Catalytic activity and chaperone function of human protein-disulfide isomerase are required for the efficient refolding of proinsulin. *J Biol Chem.* 2002;277:310-317.
174. Rajpal G, Schuiki I, Liu M, Volchuk A, Arvan P. Action of protein disulfide isomerase on proinsulin exit from endoplasmic reticulum of pancreatic beta-cells. *J Biol Chem.* 2012;287:43-47.
175. He K, Cunningham CN, Manickam N, Liu M, Arvan P, Tsai B. PDI reductase acts on Akita mutant proinsulin to initiate retrotranslocation along the Hrd1/Sel1L-p97 axis. *Mol Biol Cell.* 2015;26:3413-3423.
176. Dias-Gunasekara S, Gubbens J, van Lith M, et al. Tissue-specific expression and dimerization of the endoplasmic reticulum oxidoreductase Ero1 β . *J Biol Chem.* 2005;280:33066-33075.
177. Zito E, Chin KT, Blais J, Harding HP, Ron D. ERO1- β , a pancreas-specific disulfide oxidase, promotes insulin biogenesis and glucose homeostasis. *J Cell Biol.* 2010;188:821-832.
178. Zito E. ERO1: a protein disulfide oxidase and H₂O₂ producer. *Free Radic Biol Med.* 2015;83:299-304.
179. Khoo C, Yang J, Rajpal G, et al. Endoplasmic reticulum oxidoreductase-1-like-beta (ERO1 β) regulates susceptibility to endoplasmic reticulum stress and is induced by insulin flux in beta-cells. *Endocrinology.* 2011;152:2599-2608.
180. Delaunay-Moisan A, Ponsero A, Toledano MB. Reexamining the function of glutathione in oxidative protein folding and secretion. *Antioxid Redox Signal.* 2017;27:1178-1199.
181. Zhu L, Yang K, Wang X, Wang X, Wang CC. A novel reaction of peroxiredoxin 4 towards substrates in oxidative protein folding. *PLoS One.* 2014;9:e105529.
182. Tu BP, Weissman JS. Oxidative protein folding in eukaryotes: mechanisms and consequences. *J Cell Biol.* 2004;164:341-346.
183. Konno T, Pinho Melo E, Lopes C, et al. ERO1-independent production of H₂O₂ within the endoplasmic reticulum fuels Prdx4-mediated oxidative protein folding. *J Cell Biol.* 2015;211:253-259.
184. Lortz S, Lenzen S, Mehmeti I. Impact of scavenging hydrogen peroxide in the endoplasmic reticulum for beta cell function. *J Mol Endocrinol.* 2015;55:21-29.
185. Awazawa M, Futami T, Sakada M, et al. Deregulation of pancreas-specific oxidoreductin ERO1 β in the pathogenesis of diabetes mellitus. *Mol Cell Biol.* 2014;34:1290-1299.
186. Ding Y, Yamada S, Wang KY, et al. Overexpression of peroxiredoxin 4 protects against high-dose streptozotocin-induced diabetes by suppressing oxidative stress and cytokines in transgenic mice. *Antioxid Redox Signal.* 2010;13:1477-1490.

187. Mehmeti I, Lortz S, Elsner M, Lenzen S. Peroxiredoxin 4 improves insulin biosynthesis and glucose-induced insulin secretion in insulin-secreting INS-1E cells. *J Biol Chem*. 2014;289:26904-26913.
188. Dreja T, Jovanovic Z, Rasche A, et al. Diet-induced gene expression of isolated pancreatic islets from a polygenic mouse model of the metabolic syndrome. *Diabetologia*. 2010;53:309-320.
189. Malhotra JD, Miao H, Zhang K, et al. Antioxidants reduce endoplasmic reticulum stress and improve protein secretion. *Proc Natl Acad Sci U S A*. 2008;105:18525-18530.
190. Pi J, Bai Y, Zhang Q, et al. Reactive oxygen species as a signal in glucose-stimulated insulin secretion. *Diabetes*. 2007;56:1783-1791.
191. Flynn GC, Pohl J, Flocco MT, Rothman JE. Peptide-binding specificity of the molecular chaperone BiP. *Nature (London)*. 1991;353:726-730.
192. Hendershot LM, Wei JY, Gaut JR, Lawson B, Freiden PJ, Murti KG. In vivo expression of mammalian BiP ATPase mutants causes disruption of the endoplasmic reticulum. *Mol Biol Cell*. 1995;6:283-296.
193. Kim P, Bole D, Arvan P. Transient aggregation of nascent thyroglobulin in the endoplasmic reticulum: relationship to the molecular chaperone, BiP. *J Cell Biol*. 1992;118:541-549.
194. Marquardt T, Helenius A. Misfolding and aggregation of newly synthesized proteins in the endoplasmic reticulum. *J Cell Biol*. 1992;117:505-513.
195. Dorner AJ, Wasley LC, Kaufman RJ. Protein dissociation from GRP78 and secretion are blocked by depletion of cellular ATP levels. *Proc Natl Acad Sci U S A*. 1990;87:7429-7432.
196. Dorner AJ, Wasley LC, Kaufman RJ. Overexpression of GRP78 mitigates induction of glucose regulated proteins and blocks secretion of selective proteins in Chinese hamster ovary cells. *EMBO J*. 1992;11:1563-1571.
197. Muresan Z, Arvan P. Thyroglobulin transport along the secretory pathway. Investigation of the role of molecular chaperone, GRP94, in protein export from the endoplasmic reticulum. *J Biol Chem*. 1997;272:26095-26102.
198. Petrova K, Oyadomari S, Hendershot LM, Ron D. Regulated association of misfolded endoplasmic reticulum luminal proteins with P58/DNAJc3. *EMBO J*. 2008;27:2862-2872.
199. Ladiges WC, Knoblaugh SE, Morton JF, et al. Pancreatic beta-cell failure and diabetes in mice with a deletion mutation of the endoplasmic reticulum molecular chaperone gene P58IPK. *Diabetes*. 2005;54:1074-1081.
200. Oyadomari S, Yun C, Fisher EA, et al. Cotranslocational degradation protects the stressed endoplasmic reticulum from protein overload. *Cell*. 2006;126:727-739.
201. Rutkowski DT, Kang SW, Goodman AG, et al. The role of p58IPK in protecting the stressed endoplasmic reticulum. *Mol Biol Cell*. 2007;18:3681-3691.
202. Synofzik M, Haack TB, Kopajtich R, et al. Absence of BiP co-chaperone DNAJc3 causes diabetes mellitus and multisystemic neurodegeneration. *Am J Hum Genet*. 2014;95:689-697.
203. Kaufman RJ, Malhotra JD. Calcium trafficking integrates endoplasmic reticulum function with mitochondrial bioenergetics. *Biochim Biophys Acta*. 2014;1843:2233-2239.
204. Sabourin J, Le Gal L, Saurwein L, Haefliger JA, Raddatz E, Allagnat F. Store-operated Ca^{2+} entry mediated by Orai1 and TRPC1 participates to insulin secretion in rat beta-cells. *J Biol Chem*. 2015;290:30530-30539.
205. Gilon P, Chae HY, Rutter GA, Ravier MA. Calcium signaling in pancreatic beta-cells in health and in type 2 diabetes. *Cell Calcium*. 2014;56:340-361.
206. Kono T, Ahn G, Moss DR, et al. PPAR-gamma activation restores pancreatic islet SERCA2 levels and prevents beta-cell dysfunction under conditions of hyperglycemic and cytokine stress. *Mol Endocrinol*. 2012;26:257-271.
207. Arredouani A, Guiot Y, Jonas JC, et al. SERCA3 ablation does not impair insulin secretion but suggests distinct roles of different sarcoendoplasmic reticulum Ca^{2+} pumps for Ca^{2+} homeostasis in pancreatic beta-cells. *Diabetes*. 2002;51:3245-3253.
208. Ravier MA, Daro D, Roma LP, et al. Mechanisms of control of the free Ca^{2+} concentration in the endoplasmic reticulum of mouse pancreatic beta-cells: interplay with cell metabolism and $[Ca^{2+}]_c$ and role of SERCA2b and SERCA3. *Diabetes*. 2011;60:2533-2545.
209. Coe H, Michalak M. Calcium binding chaperones of the endoplasmic reticulum. *Gen Physiol Biophys*. 2009;28:F96-F103.
210. Varadi A, Lebel L, Hashim Y, Mehta Z, Ashcroft SJ, Turner R. Sequence variants of the sarco(endo)plasmic reticulum Ca^{2+} -transport ATPase 3 gene (SERCA3) in Caucasian type II diabetic patients (UK Prospective Diabetes Study 48). *Diabetologia*. 1999;42:1240-1243.
211. Gutierrez T, Simmen T. Endoplasmic reticulum chaperones tweak the mitochondrial calcium rheostat to control metabolism and cell death. *Cell Calcium*. 2018;70:64-75.
212. Parys JB, Decuypere JP, Bultynck G. Role of the inositol 1,4,5-trisphosphate receptor/ Ca^{2+} -release channel in autophagy. *Cell Commun Signal*. 2012;10:17.
213. Rizzuto R, Duchen MR, Pozzan T. Flirting in little space: the ER-mitochondria Ca^{2+} liaison. *Sci STKE*. 2004;2004:re1.
214. Lipson KL, Fonseca SG, Ishigaki S, et al. Regulation of insulin biosynthesis in pancreatic beta cells by an endoplasmic reticulum-resident protein kinase IRE1. *Cell Metab*. 2006;4:245-254.
215. Sun J, Cui J, He Q, Chen Z, Arvan P, Liu M. Proinsulin misfolding and endoplasmic reticulum stress during the development and progression of diabetes. *Mol Aspects Med*. 2015;42:105-118.
216. Yoshioka M, Kayo T, Ikeda T, Koizumi A. A novel locus, Mody4, distal to D7Mit189 on chromosome 7 determines early-onset NIDDM in nonobese C57BL/6 (Akita) mutant mice. *Diabetes*. 1997;46:887-894.
217. Kayo T, Koizumi A. Mapping of murine diabetogenic gene mody on chromosome 7 at D7Mit258 and its involvement in pancreatic islet and beta cell development during the perinatal period. *J Clin Invest*. 1998;101:2112-2118.
218. Izumi T, Yokota-Hashimoto H, Zhao S, Wang J, Halban PA, Takeuchi T. Dominant negative pathogenesis by mutant proinsulin in the Akita diabetic mouse. *Diabetes*. 2003;52:409-416.
219. Wang J, Chen Y, Yuan Q, Tang W, Zhang X, Osei K. Control of precursor maturation and disposal is an early regulative mechanism in the normal insulin production of pancreatic beta-cells. *PLoS One*. 2011;6:e19446.
220. Weiss MA. Diabetes mellitus due to the toxic misfolding of proinsulin variants. *FEBS Lett*. 2013;587:1942-1950.
221. Bonfanti R, Colombo C, Nocerino V, et al. Insulin gene mutations as cause of diabetes in children negative for five type 1 diabetes autoantibodies. *Diabetes Care*. 2009;32:123-125.
222. Renner S, Braun-Reichhart C, Blutke A, et al. Permanent neonatal diabetes in INS(C94Y) transgenic pigs. *Diabetes*. 2013;62:1505-1511.
223. Blutke A, Renner S, Flenkenthaler F, et al. The Munich MIDY pig bio-bank – a unique resource for studying organ crosstalk in diabetes. *Mol Metab*. 2017;6:931-940.
224. Hodish I, Absood A, Liu L, et al. In vivo misfolding of proinsulin below the threshold of frank diabetes. *Diabetes*. 2011;60:2092-2101.
225. Barbetti F, Colombo C, Haataja L, Cras-Meneur C, Bernardini S, Arvan P. Hyperglucagonemia in an animal model of insulin-deficient diabetes: what therapy can improve it? *Clin Diabetes Endocrinol*. 2016;2:11.
226. Liu M, Haataja L, Wright J, et al. Mutant INS-gene induced diabetes of youth: proinsulin cysteine residues impose dominant-negative inhibition on wild-type proinsulin transport. *PLoS One*. 2010;5:e13333.
227. Hodish I, Liu M, Rajpal G, et al. Misfolded proinsulin affects bystander proinsulin in neonatal diabetes. *J Biol Chem*. 2010;285:685-694.
228. Haataja L, Snapp E, Wright J, et al. Proinsulin intermolecular interactions during secretory trafficking in pancreatic beta cells. *J Biol Chem*. 2013;288:1896-1906.
229. Rajan S, Eames SC, Park SY, et al. In vitro processing and secretion of mutant insulin proteins that cause permanent neonatal diabetes. *Am J Physiol Endocrinol Metab*. 2010;298:E403-E410.
230. Haber EP, Procopio J, Carvalho CR, Carpinelli AR, Newsholme P, Curi R. New insights into fatty acid modulation of pancreatic beta-cell function. *Int Rev Cytol*. 2006;248:1-41.
231. Bachar E, Ariav Y, Ketzinel-Gilad M, Cerasi E, Kaiser N, Leibowitz G. Glucose amplifies fatty acid-induced endoplasmic reticulum stress in

- pancreatic beta-cells via activation of mTORC1. *PLoS One*. 2009;4:e4954.
232. Riserus U, Willett WC, Hu FB. Dietary fats and prevention of type 2 diabetes. *Prog Lipid Res*. 2009;48:44-51.
 233. Gwiadzda KS, Yang TL, Lin Y, Johnson JD. Effects of palmitate on ER and cytosolic Ca²⁺ homeostasis in beta-cells. *Am J Physiol Endocrinol Metab*. 2009;296:E690-E701.
 234. Wikstrom JD, Israeli T, Bachar-Wikstrom E, et al. AMPK regulates ER morphology and function in stressed pancreatic beta-cells via phosphorylation of DRP1. *Mol Endocrinol*. 2013;27:1706-1723.
 235. Cassel R, Ducreux S, Alam MR, et al. Protection of human pancreatic islets from lipotoxicity by modulation of the translocon. *PLoS One*. 2016;11:e0148686.
 236. Szabat M, Page MM, Panzhinskiy E, et al. Reduced insulin production relieves endoplasmic reticulum stress and induces beta cell proliferation. *Cell Metab*. 2016;23:179-193.
 237. Zhao H, Matsuzaka T, Nakano Y, et al. Elov16 deficiency improves glycemic control in diabetic db/db mice by expanding beta-cell mass and increasing insulin secretory capacity. *Diabetes*. 2017;66:1833-1846.
 238. Tran K, Li Y, Duan H, Arora D, Lim HY, Wang W. Identification of small molecules that protect pancreatic beta cells against endoplasmic reticulum stress-induced cell death. *ACS Chem Biol*. 2014;9:2796-2806.
 239. Eguchi K, Manabe I, Oishi-Tanaka Y, et al. Saturated fatty acid and TLR signaling link beta cell dysfunction and islet inflammation. *Cell Metab*. 2012;15:518-533.
 240. Tersey SA, Bolanis E, Holman TR, Maloney DJ, Nadler JL, Mirmira RG. Minireview: 12-lipoxygenase and islet beta-cell dysfunction in diabetes. *Mol Endocrinol*. 2015;29:791-800.
 241. Lombardi A, Tomer Y. Interferon alpha impairs insulin production in human beta cells via endoplasmic reticulum stress. *J Autoimmun*. 2017;80:48-55.
 242. Ramadan JW, Steiner SR, O'Neill CM, Nunemaker CS. The central role of calcium in the effects of cytokines on beta-cell function: implications for type 1 and type 2 diabetes. *Cell Calcium*. 2011;50:481-490.
 243. Cardozo AK, Ortis F, Stirling J, et al. Cytokines downregulate the sarcoendoplasmic reticulum pump Ca²⁺ ATPase 2b and deplete endoplasmic reticulum Ca²⁺, leading to induction of endoplasmic reticulum stress in pancreatic beta-cells. *Diabetes*. 2005;54:452-461.
 244. Brozzi F, Nardelli TR, Lopes M, et al. Cytokines induce endoplasmic reticulum stress in human, rat and mouse beta cells via different mechanisms. *Diabetologia*. 2015;58:2307-2316.
 245. Tong X, Kono T, Anderson-Baucum EK, et al. SERCA2 deficiency impairs pancreatic beta-cell function in response to diet-induced obesity. *Diabetes*. 2016;65:3039-3052.
 246. Lortz S, Gurgul-Convey E, Naujok O, Lenzen S. Overexpression of the antioxidant enzyme catalase does not interfere with the glucose responsiveness of insulin-secreting INS-1E cells and rat islets. *Diabetologia*. 2013;56:774-782.
 247. Oyadomari S, Takeda K, Takiguchi M, et al. Nitric oxide-induced apoptosis in pancreatic beta cells is mediated by the endoplasmic reticulum stress pathway. *Proc Natl Acad Sci U S A*. 2001;98:10845-10850.
 248. Eizirik DL, Sandler S, Welsh N, et al. Cytokines suppress human islet function irrespective of their effects on nitric oxide generation. *J Clin Invest*. 1994;93:1968-1974.
 249. Pappalardo Z, Gambhir Chopra D, Hennings TG, et al. A whole-genome RNA interference screen reveals a role for Spry2 in insulin transcription and the unfolded protein response. *Diabetes*. 2017;66:1703-1712.
 250. Hostens K, Pavlovic D, Zambre Y, et al. Exposure of human islets to cytokines can result in disproportionately elevated proinsulin release. *J Clin Invest*. 1999;104:67-72.
 251. Larsen CM, Faulenbach M, Vaag A, et al. Interleukin-1-receptor antagonist in type 2 diabetes mellitus. *N Engl J Med*. 2007;356:1517-1526.
 252. Lerner AG, Upton JP, Praveen PV, et al. IRE1alpha induces thioredoxin-interacting protein to activate the NLRP3 inflammasome and promote programmed cell death under irremediable ER stress. *Cell Metab*. 2012;16:250-264.
 253. Cianciaruso C, Phelps EA, Pasquier M, et al. Primary human and rat beta-cells release the intracellular autoantigens GAD65, IA-2, and proinsulin in exosomes together with cytokine-induced enhancers of immunity. *Diabetes*. 2017;66:460-473.
 254. Taylor RC, Dillin A. Aging as an event of proteostasis collapse. *Cold Spring Harb Perspect Biol*. 2011;3(5):pii: a004440. <https://doi.org/10.1101/cshperspect.a004440>
 255. Chang AM, Halter JB. Aging and insulin secretion. *Am J Physiol Endocrinol Metab*. 2003;284:E7-E12.
 256. Rudenski AS, Hadden DR, Atkinson AB, et al. Natural history of pancreatic islet B-cell function in type 2 diabetes mellitus studied over six years by homeostasis model assessment. *Diabet Med*. 1988;5:36-41.
 257. Szoke E, Shrayyef MZ, Messing S, et al. Effect of aging on glucose homeostasis: accelerated deterioration of beta-cell function in individuals with impaired glucose tolerance. *Diabetes Care*. 2008;31:539-543.
 258. Chiu KC, Martinez DS, Chu A. Comparison of the relationship of age and beta cell function in three ethnic groups. *Clin Endocrinol (Oxf)*. 2005;62:296-302.
 259. Muzumdar R, Ma X, Atzmon G, Vuguin P, Yang X, Barzilai N. Decrease in glucose-stimulated insulin secretion with aging is independent of insulin action. *Diabetes*. 2004;53:441-446.
 260. Avrahami D, Li C, Zhang J, et al. Aging-dependent demethylation of regulatory elements correlates with chromatin state and improved beta cell function. *Cell Metab*. 2015;22:619-632.
 261. Tersey SA, Nishiki Y, Templin AT, et al. Islet beta-cell endoplasmic reticulum stress precedes the onset of type 1 diabetes in the nonobese diabetic mouse model. *Diabetes*. 2012;61:818-827.
 262. Watkins RA, Evans-Molina C, Terrell JK, et al. Proinsulin and heat shock protein 90 as biomarkers of beta-cell stress in the early period after onset of type 1 diabetes. *Transl Res*. 2016;168:96-106.e1.
 263. Cechin SR, Lopez-Ocejo O, Karpinsky-Semper D, Buchwald P. Biphasic decline of beta-cell function with age in euglycemic nonobese diabetic mice parallels diabetes onset. *IUBMB Life*. 2015;67:634-644.
 264. Wang S, Li J, Li XJ. Morphological and functional characteristics of pancreatic islet beta cells in natural aging SD rats. *Sichuan Da Xue Xue Bao Yi Xue Ban*. 2008;39:197-201.
 265. Goodge KA, Hutton JC. Translational regulation of proinsulin biosynthesis and proinsulin conversion in the pancreatic beta-cell. *Semin Cell Dev Biol*. 2000;11:235-242.
 266. Skelly RH, Schupp GT, Ishihara H, Oka Y, Rhodes CJ. Glucose-regulated translational control of proinsulin biosynthesis with that of the proinsulin endopeptidases PC2 and PC3 in the insulin-producing MIN6 cell line. *Diabetes*. 1996;45:37-43.
 267. Wasserfall C, Nick HS, Campbell-Thompson M, et al. Persistence of pancreatic insulin mRNA expression and proinsulin protein in type 1 diabetes Pancreata. *Cell Metab*. 2017;26:568-575.e3.
 268. Uchizono Y, Alarcon C, Wicksteed BL, Marsh BJ, Rhodes CJ. The balance between proinsulin biosynthesis and insulin secretion: where can imbalance lead? *Diabetes Obes Metab*. 2007;9(Suppl. 2):56-66.
 269. Alarcon C, Boland BB, Uchizono Y, et al. Pancreatic ss-cell adaptive plasticity in obesity increases insulin production but adversely affects secretory function. *Diabetes*. 2016;65:438-450.
 270. Kjørholt C, Akerfeldt MC, Biden TJ, Laybutt DR. Chronic hyperglycemia, independent of plasma lipid levels, is sufficient for the loss of beta-cell differentiation and secretory function in the db/db mouse model of diabetes. *Diabetes*. 2005;54:2755-2763.
 271. Nolan CJ, Delghingaro-Augusto V. Reversibility of defects in proinsulin processing and islet beta-cell failure in obesity-related type 2 diabetes. *Diabetes*. 2016;65:352-354.
 272. Alonso LC, Yokoe T, Zhang P, et al. Glucose infusion in mice: a new model to induce beta-cell replication. *Diabetes*. 2007;56:1792-1801.
 273. Nagamatsu S, Bolaffi JL, Grodsky GM. Direct effects of glucose on proinsulin synthesis and processing during desensitization. *Endocrinology*. 1987;120:1225-1231.
 274. Zhang L, Lai E, Teodoro T, Volchuk A. GRP78, but not protein-disulfide isomerase, partially reverses hyperglycemia-induced inhibition of insulin synthesis and secretion in pancreatic [beta]-cells. *J Biol Chem*. 2009;284:5289-5298.

275. Kaniuk NA, Kiraly M, Bates H, Vranic M, Volchuk A, Brumell JH. Ubiquitinated-protein aggregates form in pancreatic beta-cells during diabetes-induced oxidative stress and are regulated by autophagy. *Diabetes*. 2007;56:930-939.
276. Rane NS, Kang SW, Chakrabarti O, Feigenbaum L, Hegde RS. Reduced translocation of nascent prion protein during ER stress contributes to neurodegeneration. *Dev Cell*. 2008;15:359-370.
277. Hegde RS, Kang SW. The concept of translocational regulation. *J Cell Biol*. 2008;182:225-232.
278. Kang SW, Rane NS, Kim SJ, Garrison JL, Taunton J, Hegde RS. Substrate-specific translocational attenuation during ER stress defines a pre-emptive quality control pathway. *Cell*. 2006;127:999-1013.
279. Arunagiri A, Haataja L, Cunningham CN, et al. Misfolded proinsulin in the endoplasmic reticulum during development of beta cell failure in diabetes. *Ann N Y Acad Sci*. 2018;1418:5-19.
280. Engin F. ER stress and development of type 1 diabetes. *J Invest Med*. 2016;64:2-6.
281. Markussen J. Comparative reduction/oxidation studies with single chain des-(B30) insulin and porcine proinsulin. *Int J Pept Protein Res*. 1985;25:431-434.
282. Vander Mierde D, Scheuner D, Quintens R, et al. Glucose activates a protein phosphatase-1-mediated signaling pathway to enhance overall translation in pancreatic beta-cells. *Endocrinology*. 2007;148:609-617.
283. Kaufman RJ, Back SH, Song B, Han J, Hassler J. The unfolded protein response is required to maintain the integrity of the endoplasmic reticulum, prevent oxidative stress and preserve differentiation in beta-cells. *Diabetes Obes Metab*. 2010;12(Suppl. 2):99-107.
284. Grankvist K, Marklund SL, Taljedal IB. CuZn-superoxide dismutase, Mn-superoxide dismutase, catalase and glutathione peroxidase in pancreatic islets and other tissues in the mouse. *Biochem J*. 1981;199:393-398.
285. Hoglinger GU, Melhem NM, Dickson DW, et al. Identification of common variants influencing risk of the tauopathy progressive supranuclear palsy. *Nat Genet*. 2011;43:699-705.
286. Tsuchiya Y, Saito M, Kadokura H, et al. IRE1-XBP1 pathway regulates oxidative proinsulin folding in pancreatic beta cells. *J Cell Biol*. 2018;217:1287-1301.

How to cite this article: Liu M, Weiss MA, Arunagiri A, et al. Biosynthesis, structure, and folding of the insulin precursor protein. *Diabetes Obes Metab*. 2018;20(Suppl. 2):28-50. <https://doi.org/10.1111/dom.13378>