



## Supporting Information

for *Small Methods*, DOI: 10.1002/smtd.201800408

**Selective Localization of Hierarchically Assembled Particles  
to Plasma Membranes of Living Cells**

*Asish C. Misra, Tae-Hong Park, Randy P. Carney, Giulia  
Rusciano, Francesco Stellacci, and Joerg Lahann\**

Supporting Information

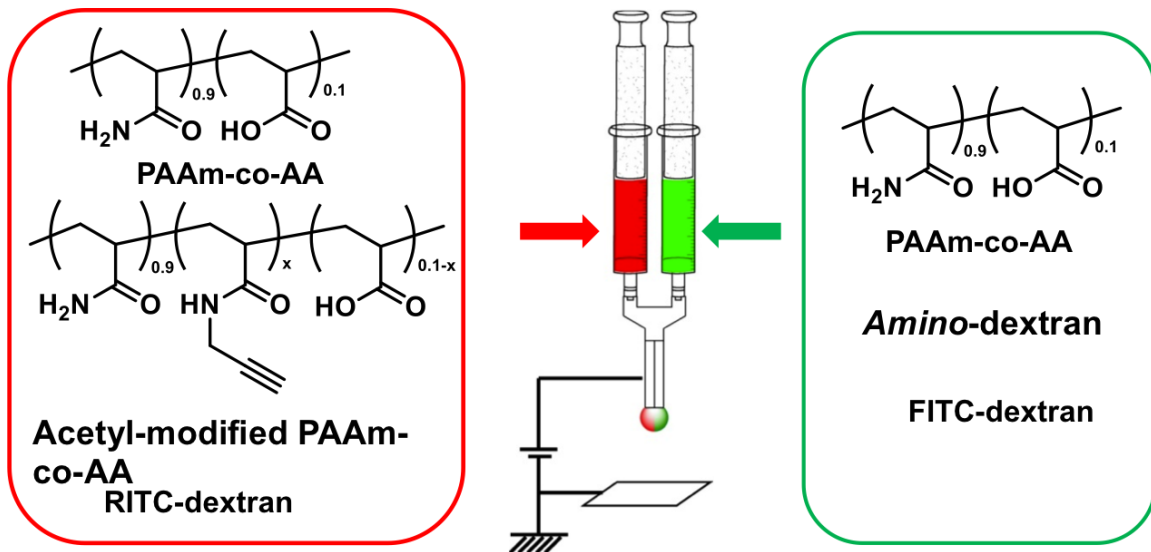


Figure S1. Schematic of the EHD co-jetting process and fabrication of multicompartamental particles.

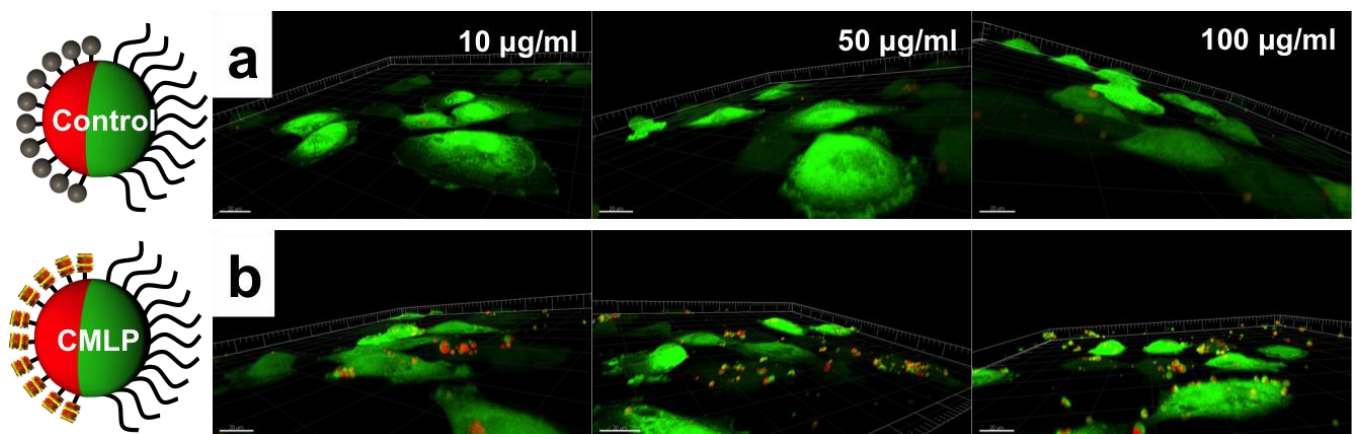


Figure S2. Three-dimensional reconstructions of z-stacks corresponding to 6-hour incubation experiments shown in Figures 2 and 3.

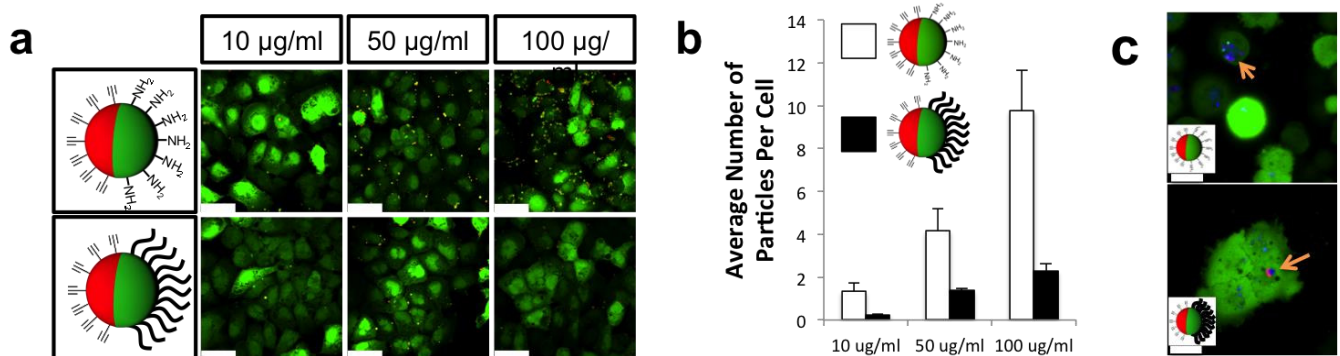


Figure S3. Effect of PEGylation. (a) Comparison of 6 hr incubations of as jetted particles (top images) and PEGylated particles (bottom images, all scale bars 50  $\mu$  m) and (b) associated quantification. (c) Endosomal staining with LysoTracker showing that both these particles are also endocytosed (top – as jetted, unmodified particles, bottom – PEGylated particles). Scale bars 10  $\mu$ m.

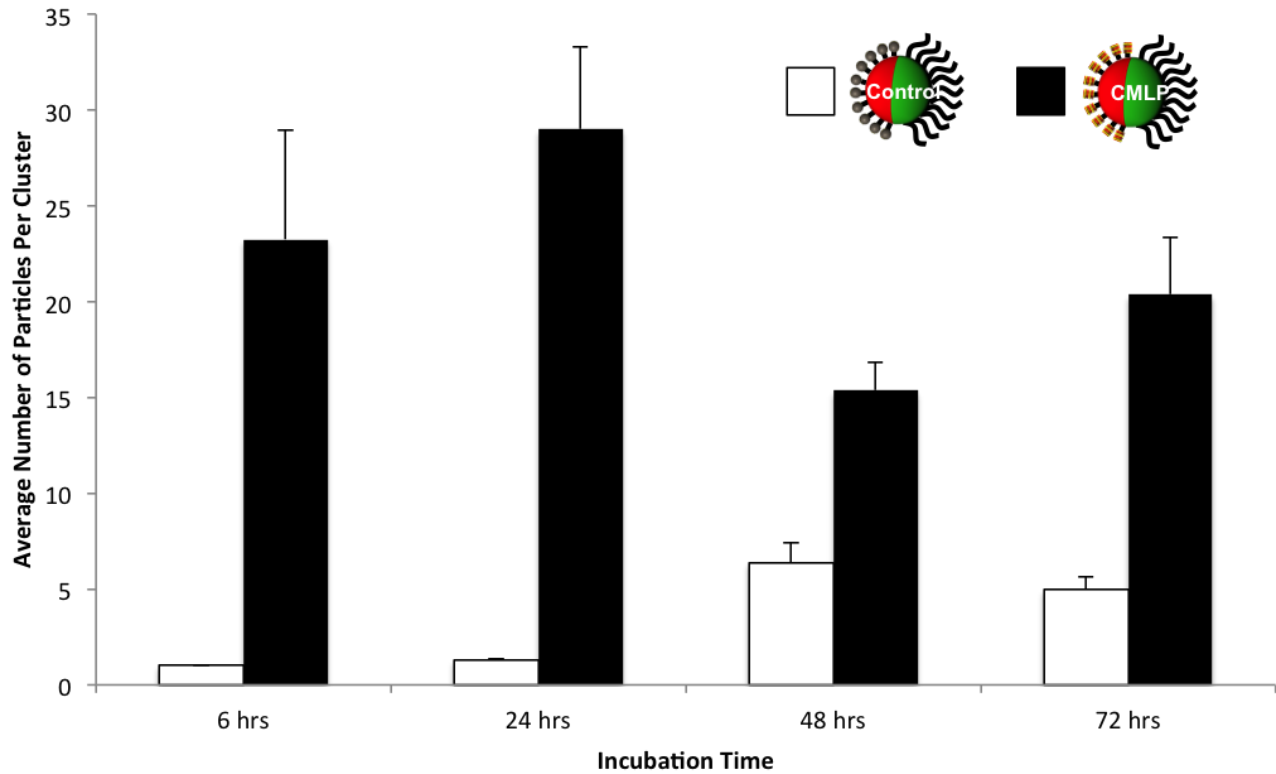


Figure S4. Quantification of long-term incubation data shown in Fig. 4. Note for the CMLPs, compared to 72 hours, the average number of particles per cell at 6, 24, and 48 hours are not significant ( $p > .05$ ). For the controls, there also is no significant difference between 48 hrs and 72 hrs ( $p > .05$ ).