


FROM THE COVER

Transcriptomics of monarch butterflies (*Danaus plexippus*) reveals that toxic host plants alter expression of detoxification genes and down-regulate a small number of immune genes

Wen-Hao Tan¹  | Tarik Acevedo^{1,2} | Erica V. Harris¹ | Tiffanie Y. Alcaide^{1,2} | James R. Walters³ | Mark D. Hunter⁴ | Nicole M. Gerardo¹ | Jacobus C. de Roode¹

¹Department of Biology, Emory University, Atlanta, GA, USA

²Department of Ecosystem Science and Management, Pennsylvania State University, State College, PA, USA

³Department of Ecology and Evolutionary Biology, University of Kansas, Lawrence, KS, USA

⁴Department of Ecology & Evolutionary Biology, University of Michigan, Ann Arbor, MI, USA

Correspondence

Wen-Hao Tan, Department of Biology, Emory University, Atlanta, Georgia, 30322, USA.

Email: wenhaotan2143@gmail.com

Funding information

Division of Environmental Biology, Grant/Award Number: 1457758; Division of Integrative Organismal Systems, Grant/Award Number: 1557724; Division of Graduate Education, Grant/Award Number: 1444932

Abstract

Herbivorous insects have evolved many mechanisms to overcome plant chemical defences, including detoxification and sequestration. Herbivores may also use toxic plants to reduce parasite infection. Plant toxins could directly interfere with parasites or could enhance endogenous immunity. Alternatively, plant toxins could favour down-regulation of endogenous immunity by providing an alternative (exogenous) defence against parasitism. However, studies on genomewide transcriptomic responses to plant defences and the interplay between plant toxicity and parasite infection remain rare. Monarch butterflies (*Danaus plexippus*) are specialist herbivores of milkweeds (*Asclepias* spp.), which contain toxic cardenolides. Monarchs have adapted to cardenolides through multiple resistance mechanisms and can sequester cardenolides to defend against bird predators. In addition, high-cardenolide milkweeds confer monarch resistance to a specialist protozoan parasite (*Ophryocystis elektroscirrha*). We used this system to study the interplay between the effects of plant toxicity and parasite infection on global gene expression. We compared transcriptional profiles between parasite-infected and uninfected monarch larvae reared on two milkweed species. Our results demonstrate that monarch differentially express several hundred genes when feeding on *A. curassavica* and *A. incarnata*, two species that differ substantially in cardenolide concentrations. These differentially expressed genes include genes within multiple families of canonical insect detoxification genes, suggesting that they play a role in monarch toxin resistance and sequestration. Interestingly, we found little transcriptional response to infection. However, parasite growth was reduced in monarchs reared on *A. curassavica*, and in these monarchs, several immune genes were down-regulated, consistent with the hypothesis that medicinal plants can reduce reliance on endogenous immunity.

KEYWORDS

Asclepias, cardenolides, immunity, Lepidoptera, RNA-Seq, secondary metabolites

1 | INTRODUCTION

Plants and herbivorous insects have often been used for studying co-evolutionary arms races within the framework of chemical ecology (Rosenthal & Berenbaum, 1991). Plants have evolved many forms of defence against herbivores, such as the production of toxic secondary chemicals, and herbivorous insects have evolved mechanisms to overcome such plant defences (Schoonhoven, van Loon, & Dicke, 2005). These mechanisms include contact avoidance, rapid excretion, sequestration, enzymatic detoxification and target site mutation (Després, David, & Gallet, 2007). Because host plant species vary in their secondary chemicals, herbivorous insects often utilize different mechanisms when feeding on different plants. For instance, milkweed aphids (*Aphid nerii*) differentially express several canonical insect detoxification genes, including genes encoding cytochrome P450s (CYP450s), UDP glucuronosyltransferases (UGTs), ATP-binding cassette transporters (ABC transporters) and glutathione S-transferases (GSTs), when feeding on milkweed species that differ in toxicity (Birnbaum, Rinker, Gerardo, & Abbot, 2017). *Heliconius melpomene* also differentially express UGTs and GSTs when feeding on *Passiflora* species that differ in cyanogen content (Yu, Fang, Zhang, & Jiggins, 2016). Herbivorous insects that feed on widely differing plant families have the additional complication that they may encounter an expanded range of phytochemicals, favouring plastic responses. Indeed, previous work has shown that the Swedish comma butterfly (*Polygonia c-album*) differentially expresses digestion- and detoxification-related genes, as well as genes encoding membrane transporters and cuticular proteins, when feeding on different host plant families (Celorio-Mancera et al., 2013).

While the ability to avoid, resist or excrete toxic chemicals has been selected in many taxa, many insects have also evolved the ability to sequester secondary chemicals into their own tissues, thereby protecting themselves against their own natural enemies (Opitz & Müller, 2009). For example, in Lepidoptera (reviewed in Nishida, 2002), some swallowtail butterflies sequester aristolochic acid from their host plants to deter vertebrate predators (Uésugi, 2010); buckeye butterflies (*Junonia coenia*) sequester iridoid glycosides (IGs), which deter invertebrate predators (Dyer & Bowers, 1996; Theodoratus & Bowers, 1999); and tiger moths (*Grammia incorrupta*) sequester pyrrolizidine alkaloids, which defend them against parasitoids (Singer, Mace, & Bernays, 2009). In addition to the direct effects of sequestered chemicals on antipredator and antiparasite defence, phytochemicals can also indirectly affect parasites by modulating the host immune system (Lampert, 2012). Depending on the particular chemicals and parasites, toxin sequestration may reduce, enhance or have no effect on antiparasite immunity. For instance, all three scenarios have been shown in herbivores that sequester IGs. *Junonia coenia* exhibits reduced immunity (measured by the melanization response) when feeding on *Plantago lanceolata*, a plant species with greater concentrations of IGs, than when feeding on *P. major*, a less toxic host plant (Smilanich, Dyer, Chambers, & Bowers, 2009). In contrast, in this same system, feeding on the more toxic plant enhances antiviral defences (Smilanich et al., 2017).

Melitaea cinxia shows enhanced immunity when feeding on *Plantago lanceolata* strains with higher IG concentration (Laurentz et al., 2012), but in *Grammia incorrupta*, a moth species that also feeds on IG-containing plants, IG concentration does not appear to affect immune responses (Smilanich, Vargas, Dyer, & Bowers, 2011).

As described above, phytochemicals pose both challenges and benefits for herbivorous insects, and the ecological interactions and evolutionary relationships between plants and herbivorous insects have been studied extensively. However, studies of genomewide transcriptomic responses to plant defences, which provide insight into the simultaneous effects of toxins on detoxification, sequestration and immune systems, remain rare (Celorio-Mancera et al., 2013; Vogel, Musser, & Celorio-Mancera, 2014). Even for herbivorous insect species with genomic and transcriptomic information available, transcriptomic research has rarely focused on herbivore–plant interactions (Vogel et al., 2014).

Here, we provide a transcriptomics-based analysis of parasite-infected and parasite-uninfected monarch butterflies (*Danaus plexippus*) feeding on different host plant species. Monarch butterflies are a prominent example of sequestration and aposematism (Agrawal, Petschenka, Bingham, Weber, & Rasmann, 2012). Monarchs are specialist herbivores on milkweeds (mostly *Asclepias* spp.), but these plants vary widely in their toxicity, measured predominantly as the concentration and composition of cardenolides (Agrawal et al., 2012). Cardenolides are steroids that are toxic to most animals because they inhibit the essential enzyme Na^+/K^+ -ATPase that is responsible for maintaining membrane potentials (Agrawal et al., 2012). Monarchs and other herbivorous insects specializing on cardenolide-containing plants have convergently evolved amino acid substitutions on the target site of the toxins that decrease binding affinity (Dobler, Dalla, Wagschal, & Agrawal, 2012; Zhen, Aardema, Medina, Schumer, & Andolfatto, 2012). Target site insensitivity largely enhances monarch resistance to cardenolides, but they are not completely resistant to cardenolides (Agrawal et al., 2012; Petschenka, Offe, & Dobler, 2012). There are fitness costs, including reduced larval survival and adult lifespan, for monarchs feeding on milkweed species with high-cardenolide concentration or toxicity (Agrawal, 2005; Malcolm, 1994; Tao, Hoang, Hunter, & de Roode, 2016; Zalucki & Brower, 1992; Zalucki, Brower, & Alonso-M, 2001; Zalucki, Brower, & Malcolm, 1990). Despite these costs, monarchs have evolved the ability to sequester cardenolides into their own tissues, which, coupled with bright warning coloration, deters bird predators (Brower, Ryerson, Coppinger, & Susan, 1968).

In addition to the antipredator protection provided by milkweeds, high-cardenolide milkweeds also provide protection against the common specialist parasite *Ophryocystis elektroscirrha* (de Roode, Pedersen, Hunter, & Altizer, 2008; Sternberg et al., 2012). Infected adult monarch butterflies carry dormant parasite spores on their abdomen; females deposit spores onto eggs and milkweed foliage during oviposition, while males can transfer spores to milkweed during physical contact with leaves. Monarchs become infected with this parasite during their larval stage when

ingesting parasite spores. Following ingestion of parasite spores, sporozoites are released from the spores and then penetrate the gut wall to replicate in the hypodermis (McLaughlin & Myers, 1970). Asexual replication is followed by sexual replication during the pupal stage, and newly emerging butterflies are covered in dormant parasite spores. While parasite replication occurs during the larval and pupal stages, disease symptoms are expressed during the adult stage and include reduced emergence success, body mass, mating ability, flight ability and lifespan (Bradley & Altizer, 2005; de Roode, Gold, & Altizer, 2007; de Roode, Yates, & Altizer, 2008), with greater parasite loads resulting in greater fitness losses (de Roode et al., 2007; de Roode, Yates, et al., 2008). Interestingly, previous studies showed that larvae feeding on milkweeds with greater concentrations of cardenolides result in lower parasite infection, growth and virulence (Gowler, Leon, Hunter, & de Roode, 2015; Lefèvre, Oliver, Hunter, & de Roode, 2010; de Roode, Pedersen, et al., 2008; de Roode, Rarick, Mongue, Gerardo, & Hunter, 2011; Sternberg et al., 2012; Sternberg, de Roode, & Hunter, 2015; Tan, Tao, Hoang, Hunter, & de Roode, 2018; Tao, Gowler, Ahmad, Hunter, & de Roode, 2015; Tao, Hoang, et al., 2016). At present, however, it remains unclear how cardenolides, parasites and the monarch's immune system interact. On the one hand, it is possible that cardenolides directly interfere with parasites. This could result in a down-regulation of immune responses, as these chemicals would fulfil the same role as antiparasitic immunity. Alternatively, cardenolides could stimulate the monarch immune system and thus enhance immune responses against parasites. Therefore, monarchs provide an excellent model to study how detoxification, toxin sequestration and immunity interact in a system with a known association between phytochemicals and disease resistance.

In this study, we assess differential gene expression between monarch larvae feeding on the low-cardenolide *Asclepias incarnata* and the high-cardenolide *Asclepias curassavica* when infected or uninfected with the specialist parasite *O. elektroscirra*. Specifically, we performed RNA-Seq on two tissue types of parasite-infected and uninfected larvae fed with either plant species. In addition, we quantified parasite resistance of the same batch of larvae and measured foliar cardenolide concentration in the same batch of milkweeds. While we found a limited transcriptional response to parasite infection, our results reveal a large number of genes that are differentially expressed in monarchs reared on the two milkweed species, including the down-regulation of four immune genes when fed on the high-cardenolide *A. curassavica*.

2 | MATERIALS AND METHODS

2.1 | Monarchs, milkweeds and parasites

Monarch butterflies in this study were obtained from a laboratory-reared, outcrossed lineage generated from wild-caught migratory monarchs collected in St. Marks, Florida, USA. The parasite clone (C₁-E₂₅-P₃) was isolated from an infected, wild-caught monarch from

the same population. We used two species of milkweed in this study: *Asclepias incarnata* and *Asclepias curassavica*.

These two species were chosen because they are similar in nutrient content but differ substantially in their level of cardenolides (toxic, secondary compounds)(Tao, Ahmad, de Roode, & Hunter, 2016); total cardenolide concentration in *A. curassavica* is generally at least 10-fold higher than are those in *A. incarnata*, and cardenolide composition also differs between the two species (de Roode, Pedersen, et al., 2008; Sternberg et al., 2012). As a consequence, the milkweeds have been shown repeatedly to differentially affect monarch resistance to parasitism, with *A. curassavica* reducing parasite infection, growth and virulence relative to *A. incarnata* (Lefèvre et al., 2010; de Roode, Pedersen, et al., 2008; de Roode et al., 2011; Sternberg et al., 2012, 2015; Tao et al., 2015; Tao, Hoang, et al., 2016). Milkweed seeds were obtained from Prairie Moon Nursery (Winona, MN, USA). All milkweeds in this study were grown in a greenhouse under natural light conditions with weekly fertilization (Jack's 20-10-20 from JR Peters Inc. Allentown, PA, USA).

2.2 | Experimental design and sample collection

We used second-instar larvae for transcriptome sequencing because larvae most likely become infected with *O. elektroscirra* during early instars under natural conditions, through either vertical or horizontal transmission (Altizer, Oberhauser, & Geurts, 2004; de Roode, Chi, Rarick, & Altizer, 2009). We could not use first instars due to size limitations. Also, second-instar larvae sequester the highest amounts of cardenolides relative to their body mass (Jones, Peschenka, Flacht, & Agrawal, 2019). Upon hatching, we reared larvae individually in Petri dishes on cuttings from different plants of either *A. incarnata* or *A. curassavica*. We inoculated second-instar larvae by adding ten parasite spores to an 8-mm-diameter leaf disc taken from the milkweed species upon which they had been feeding, following an established protocol (de Roode, Yates, et al., 2008). Uninfected controls received leaf discs without spores. After larvae consumed their entire leaf disc, they were provided leaves of the same milkweed species ad libitum. Eighteen to twenty-four hours after parasite inoculation, we placed larvae in RNA later and stored them at 4°C. We chose this time point for several biological reasons. First, previous work has shown that high-cardenolide milkweed confers parasite resistance to monarchs when consumed within 24 hr of infection, but not after 24 hr postinfection (de Roode, Fernandez de, Faits, & Alizon, 2011). This suggests that if high-cardenolide milkweeds stimulate antiparasitic immunity, an altered immune response should be detectable within 24 hr. Second, although the infection process of *O. elektroscirra* remains poorly understood, this system is very similar to *Plasmodium* infection of *Anopheles* mosquitoes. In that system, immunity is strongly stimulated within 24 hr of parasite penetration of the mosquito midgut (Blumberg, Trop, Das, & Dimopoulos, 2013; Vlachou, Schlegelmilch, Christophides, & Kafatos, 2005). We dissected all larvae within four days of collection. We separated the entire digestive tract (hereafter, gut)

and the remaining body (hereafter, body) and put the samples into separate tubes with RNAlater. We stored these samples at -80°C . Sample sizes for each treatment group and tissue type are provided in Table S1.

We reared another subset of parasite-infected and uninfected larvae to adulthood on each plant species to quantify parasite resistance ($N = 9\text{--}17$ per treatment group). After parasite inoculation, larvae were transferred to individual rearing cups (473 ml) and fed leaves from either *A. curassavica* or *A. incarnata*. After pupation, pupae were placed in a laboratory room maintained at 25°C under 14/10 hr L/D cycle. After eclosion, adults were placed in 8.9×8.9 cm glassine envelopes without a food source at 12°C under 14/10-hr L/D cycle. Parasite load was quantified using a vortexing protocol described in de Roode, Pedersen, et al., 2008. Normality and variance homogeneity were checked with the Shapiro–Wilk normality test and Fligner–Killeen test. Parasite spore load data were analysed using a two-sample *t* test. All analyses were performed in R version 3.5.2 (R Core Team, 2018).

2.3 | Chemical analyses

We collected two types of samples for chemical analyses: milkweed foliage and larval frass. We collected foliage samples to confirm the differences in total cardenolide concentration between the two species. In addition, we collected larval frass to compare the differences between cardenolide composition before and after larval digestion. Foliage samples of the two plant species ($N = 11\text{--}12$ individual plants per species) were collected on the same day that we performed parasite inoculations. One leaf from the fourth leaf pair on each plant was chosen. Six leaf discs (424 mm^2 total) were taken with a paper hole punch from one side of the leaf and placed immediately into a 1-ml collection tube with cold methanol. Another six identical leaf discs were taken from the opposite side of the same leaf to measure sample dry mass. Frass samples, each from an individual larva, were collected from another subset of second-instar larvae that were reared from hatchlings on *A. curassavica* ($N = 17$). For this analysis, we focused on *A. curassavica* only because *A. incarnata* foliage contains very few cardenolides. Frass samples for each individual were collected for 24 hr during the second instar. Frass samples were collected into 1-mL collection tubes with cold methanol on the day of frass production. Total cardenolide concentrations and cardenolide compositions were analysed using reverse-phase ultraperformance liquid chromatography (UPLC; Waters Inc., Milford, MA, USA) following established methods (Tao et al., 2015). The absorbance spectra were recorded from 200 to 300 nm with digitoxin used as an internal standard. Under reverse-phase UPLC, cardenolide retention time decreases as polarity increases. For the plant samples, we analysed the difference in total cardenolide concentration between the two species. Normality and variance homogeneity were checked with the Shapiro–Wilk normality test and Fligner–Killeen test. Cardenolide data were analysed using a Mann–Whitney *U* test due to violation

of assumptions of normality and variance homogeneity. All analyses were performed in R version 3.5.2 (R Core Team, 2018). We assessed the differences in cardenolide compositions by comparing the cardenolide peaks between the two sample types.

2.4 | RNA extraction, library preparation and sequencing

We extracted total RNA from either gut or body tissues using the RNeasy RNA mini extraction kit (Qiagen) following the manufacturer's protocol. The quality and quantity of RNA samples were assessed using a nanodrop and bioanalyzer. Total RNA was sent to BGI (Beijing Genomics Institute, Hong Kong) for library preparation and sequencing. We sequenced the two tissue types (gut and body separately) of infected and uninfected larvae fed with either *A. incarnata* or *A. curassavica*, with 3–4 biological replicates per treatment (Table S1). We performed 50-bp single-end sequencing with a sequencing depth of 20 M reads per sample using the BGISEQ-500 platform.

2.5 | Transcriptome assembly

We checked the quality of RNA-Seq reads using FastQC (Andrews, 2010) and compiled across samples using MultiQC (Ewels, Magnusson, Lundin, & Källér, 2016). Sequence quality was consistently high across positions (Figure S1), so we proceeded without trimming. RNA-Seq reads for each sample were mapped to the monarch reference genome (Zhan, Merlin, Boore, & Reppert, 2011) using STAR version 2.5.2b (Dobin et al., 2013) and checked for alignment statistics. There were two samples that had low quality: one of them had a very low quantity of reads and the other had a very low mapping rate. Given that these two samples were from different individuals, we removed four samples (i.e. both tissue types of the same individual) from our analyses. We obtained the number of reads mapped to each gene from STAR and compiled them across samples as a count matrix.

2.6 | Differential gene expression analysis

Differential gene expression analysis was performed using the R Bioconductor package EDGER version 3.24.3 (Robinson, McCarthy, & Smyth, 2009). We performed separate analyses on the two tissue types. We removed genes without any counts across samples from our analyses. We normalized the library sizes across samples using the trimmed mean of M-values (TMM) normalization. We performed differential gene expression analyses using negative binomial generalized linear models (GLMs). We created design matrices for GLM with infection treatment and plant species as factors, estimated dispersion parameters and fitted the models. We addressed specific questions of interest by setting coefficient contrasts to compare between different treatment groups. First, we compared gene expression between all infected and all uninfected larvae to examine the overall impacts of parasite infection. We then compared gene expression between infected and uninfected larvae

reared on the two milkweeds species separately to examine plant-specific effects. Next, we compared gene expression between larvae fed with *A. incarnata* and *A. curassavica*; given that we found almost no differences between infected and uninfected groups, we combined them for this comparison. The Benjamini–Hochberg method (Benjamini & Hochberg, 1995) was used to account for multiple hypothesis testing and to calculate adjusted p -values. We visualized the results through heatmaps with hierarchical clustering, MA plots and volcano plots generated using the R package EDGER version 3.24.3 (Robinson et al., 2009) and GPLOTS version 3.0.1 (Warnes et al., 2016). All analyses were performed in R version 3.5.2 (R Core Team, 2018).

2.7 | Examine specific gene sets of interest

Given that we were specifically interested in genes that function in immunity and detoxification, we examined whether canonical immune genes and detoxification genes were differentially expressed among treatment groups. We obtained a full set of annotated monarch immune genes published by Dasmahapatra et al. (2012), which included a set of annotated (*Heliconius*) immune genes and their orthologs in several species, including monarchs. The monarch orthologs listed in this published data set were based on a previous version of monarch genome annotation (OGS1.0), so we updated this full set of immune genes to the latest version of gene annotation (OGS2.0) using information provided in Monarch Base (Zhan & Reppert, 2013). This updated monarch immune gene set contains 114 genes belonging to the functional classes of recognition, signaling, modulation and effector (Table S2). For detoxification genes, similar to a previous study on another milkweed-feeding insect (Birnbaum et al., 2017), we focused on four canonical gene families: cytochrome P450s (CYP450s), UDP glucuronosyltransferases (UGTs), ATP-binding cassette transporters (ABC transporters) and glutathione S-transferases (GSTs). We obtained those annotated detoxification genes from Monarch Base (Zhan & Reppert, 2013). We examined each set of our significantly differentially expressed

genes to obtain the number of immune and detoxification genes within them. For all the significantly differentially expressed detoxification genes, we performed BLAST searches against two other Lepidopteran species (*Bombyx mori* and *Heliconius melpomene*) via the EnsemblMetazoa database (<https://metazoa.ensembl.org/>) to verify that their top hit paralogs also have the same putative detoxification function.

2.8 | Gene ontology enrichment analysis

Functional annotations and Gene Ontology (GO) term assignments for all protein-coding genes in the genome were generated using PANNZER2 (Törönen, Medlar, & Holm, 2018), with protein sequences obtained from Monarch Base, using default parameters. We created a custom annotation package for our organism using AnnotationForge (Carlson & Pages, 2018). We performed GO term enrichment analyses on differentially expressed genes using ClusterProfiler (Yu, Wang, Han, & He, 2012) with default p -value and q -value cut-off thresholds. The “gene universe” included all genes that were expressed in our RNA-Seq data set. The Benjamini–Hochberg method (Benjamini & Hochberg, 1995) was used to account for multiple hypothesis testing and to calculate the adjusted p -values. We included all three ontology groups in our analyses: biological process (BP), molecular function (MF) and cellular components (CC). We visualized the enrichment results by dotplots using ClusterProfiler (Yu et al., 2012).

3 | RESULTS

3.1 | Plant chemistry and parasite resistance

We confirmed previous findings that the two milkweed species differ greatly in cardenolide concentration and differentially affect monarch resistance to parasitism. Total cardenolide concentration of *Asclepias curassavica* foliage was 95-fold higher than that of *Asclepias incarnata* foliage (Figure 1a; $W = 0$, $p < .0001$), and butterflies reared

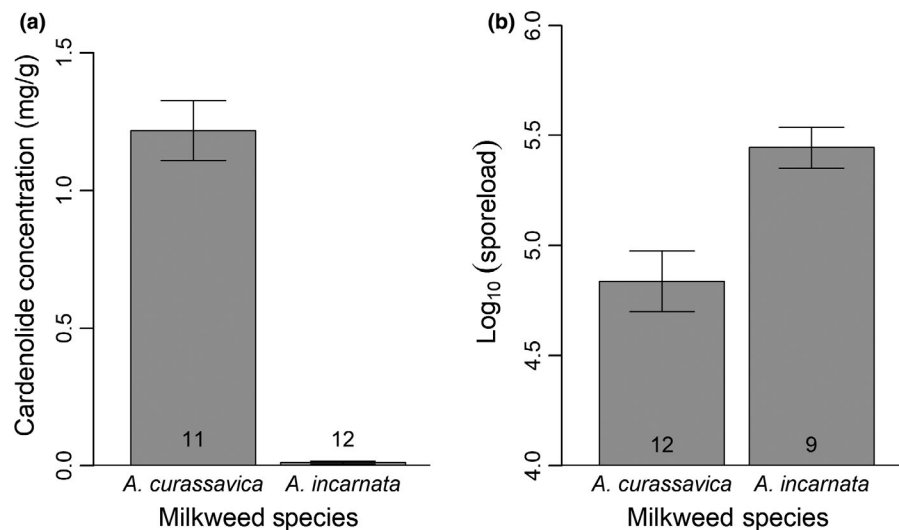


FIGURE 1 Differences in foliar cardenolide concentration and monarch parasite resistance between the two milkweed species, *Asclepias curassavica* and *Asclepias incarnata*. (a) Total cardenolide concentration of foliage. (b) The effect of milkweed species on parasite spore load in infected monarchs. Data represent mean \pm 1 SEM. Sample sizes are reported on each bar

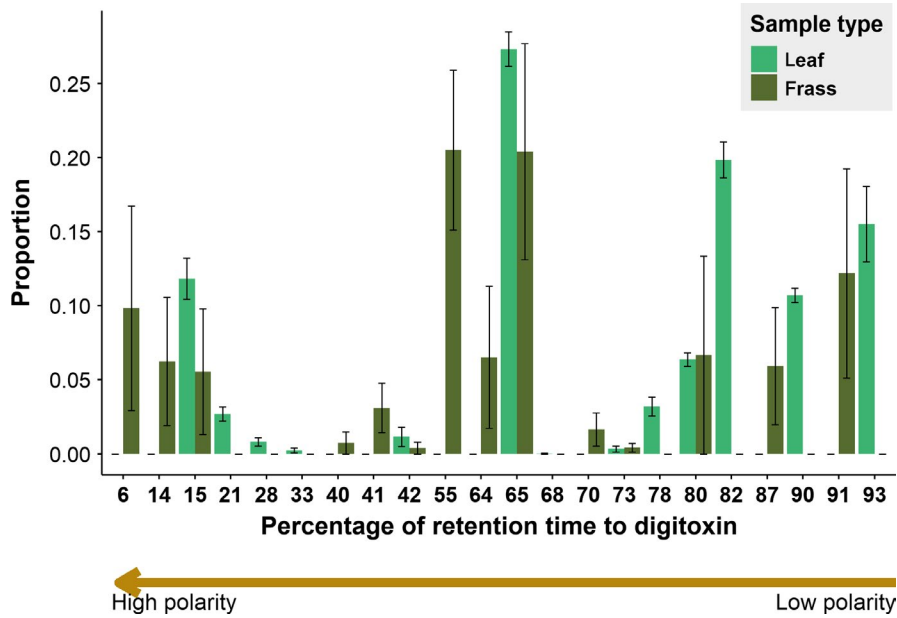


FIGURE 2 Cardenolide composition of *Asclepias curassavica* foliage and frass produced by larvae fed with *Asclepias curassavica*. The x-axis represents the percentage of retention time relative to a digitoxin internal standard in UPLC. Bars represent individual cardenolides. The y-axis represents the proportion of the individual cardenolide within each sample. Data represent the mean \pm 1 SEM. Sample sizes: $N = 11$ for foliage samples (each sample was collected from a different individual plant) and $N = 17$ for frass samples (each sample was collected from a different individual larva). We only focused on *A. curassavica* because *A. incarnata* foliage contains very few cardenolides [Colour figure can be viewed at wileyonlinelibrary.com]

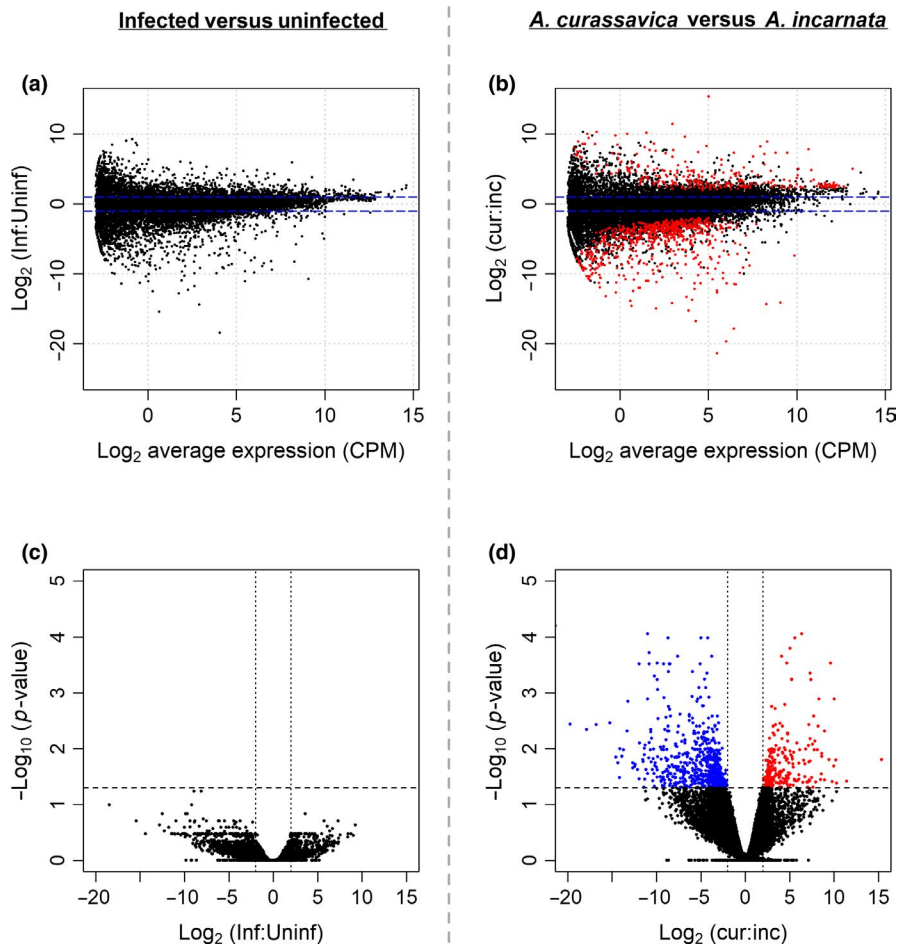
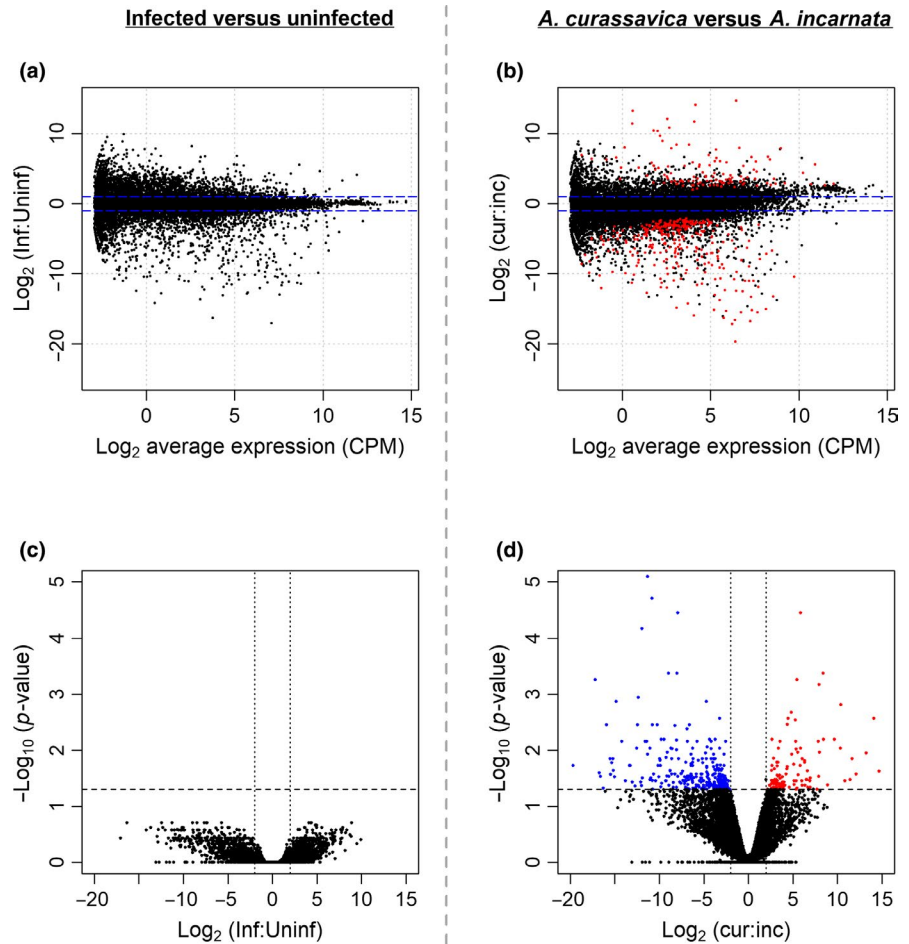


FIGURE 3 Patterns of differential gene expression in gut tissue. (a) and (c): Expression differences between infected and uninfected larvae. A positive fold change indicates up-regulation in infected larvae. (b) and (d): Expression differences between larvae fed with *Asclepias curassavica* and *Asclepias incarnata*. A positive fold change indicates up-regulation in larvae fed with *A. curassavica*. (a) and (b): MA plots. Dotted horizontal lines indicate \pm 1-fold change. (c) and (d): Volcano plots. Dotted horizontal lines indicate p -value thresholds. Dotted vertical lines indicate \pm 2-fold change. Blue dots represent significantly down-regulated genes; red dots represent significantly up-regulated genes

on *A. curassavica* experienced significantly lower parasite spore load than those fed with *A. incarnata* (Figure 1b; $t = 3.39$, $df = 19$, $p = .003$). None of the uninoculated monarchs became infected ($N = 9$ for *A. incarnata* and $N = 17$ for *A. curassavica*). When comparing the cardenolide composition of *A. curassavica* foliage and the frass from

larvae feeding on *A. curassavica*, we found that they differed greatly in composition (Figure 2). Specifically, out of a total of 22 unique cardenolides (i.e. individual bars in Figure 2), only four occurred in both foliage and frass; eight cardenolides were exclusively found in foliage, and nine were exclusively found in frass. Additionally, there were

FIGURE 4 Patterns of differential gene expression in body tissue. (a) and (c): Expression differences between infected and uninfected larvae. A positive fold change indicates up-regulation in infected larvae. (b) and (d): Expression differences between larvae fed with *Asclepias curassavica* and *Asclepias incarnata*. A positive fold change indicates up-regulation in larvae fed with *A. curassavica*. (a) and (b): MA plots. Dotted horizontal lines indicate ± 1 -fold change. (c) and (d): Volcano plots. Dotted horizontal lines indicate p -value thresholds. Dotted vertical lines indicate ± 2 -fold change. Blue dots represent significantly down-regulated genes; red dots represent significantly up-regulated genes [Colour figure can be viewed at wileyonlinelibrary.com]



more polar cardenolides in frass than in foliage, as indicated by lower retention times relative to a digitoxin internal standard (Figure 2).

3.2 | Differential gene expression analysis in relation to parasite infection

We first compared gene expression between all infected and all uninfected larvae to examine the overall effects of parasite infection on gene expression. Surprisingly, in both gut and body tissues, we found that no genes were significantly differentially expressed (Figures 3 and 4, Table 1). Next, we compared gene expression between infected and uninfected larvae reared on the two milkweed species separately to examine plant-specific effects. Again, we found almost no response to parasite infection (Table 1). For the larvae fed with *A. incarnata*, only one gene was significantly up-regulated in the gut in the infected group when compared to the uninfected group: a cytochrome P450 gene (DPOGS205609). For the larvae fed with *A. curassavica*, only two genes were significantly down-regulated in the body in the infected group: an acid digestive lipase (DPOGS211626) and a carboxypeptidase (DPOGS211663). Overall, we found extremely few differentially expressed genes between infected and uninfected larvae regardless of tissue type or host plant, and none of those that were significantly differentially expressed were canonical immune genes.

3.3 | Differential gene expression analysis in relation to milkweed diet

We compared gene expression between larvae reared on *A. curassavica* and *A. incarnata*. Given that we found almost no differences in expression between infected and uninfected larvae, we combined them in this comparison between plant species. We found that 908 genes were differentially expressed in the gut and 428 genes were differentially expressed in the body (Figures 3 and 4, Table 1). Given that the gut is the place where initial digestion of plant matter happens, we expected the transcriptional patterns to be more distinct between plant diets in gut than in body samples. Indeed, heatmap and hierarchical clustering suggest that individuals are more clustered by plant diet in gut samples than in body samples (Figure 5). The top 15 up-regulated and top 15 down-regulated genes for the gut and body are listed in Tables 2 and 3, respectively. In gut tissues, notably, one of the top 15 up-regulated genes when fed with *A. curassavica* is a glutathione S-transferase (DPOGS210488), and another one is a carboxyl esterase (DPOGS204275), both of which are canonical insect detoxification genes and possibly might function in processing cardenolides. Other genes belong to a variety of biological functions, such as digestive processes and membrane-related proteins. Differential expression of digestive and membrane-related

TABLE 1 Summary of differentially expressed genes

Factor	Subset	Direction	Gut	Body
Infection	All	up-regulated in infected	0	0
		down-regulated in infected	0	0
Infection	<i>A. incarnata</i>	up-regulated in infected	1	0
		down-regulated in infected	0	0
Infection	<i>A. curassavica</i>	up-regulated in infected	0	2
		down-regulated in infected	0	0
Plant	All	increased in <i>A. curassavica</i>	271	122
		Increased in <i>A. incarnata</i>	637	306

Note: The first two columns denote specific comparisons and the subset of samples used. The last three columns indicate the number of significantly up-regulated and down-regulated genes upon infection, or between those fed with different milkweed species, in either gut tissue or body. First, we compared infected and uninfected larvae in all samples to assess overall transcriptional patterns of parasite infection (i.e. the first row). We then compared infected and uninfected larvae reared on the two milkweed species separately to examine plant-specific effects (i.e. the second and third rows). Next, we compared larvae fed with *Asclepias incarnata* and *Asclepias curassavica*. Given that we found almost no differences between infected and uninfected groups, we combined them for this comparison (i.e. the fourth row).

genes has also been demonstrated in other insects when feeding on different plant species (Celorio-Mancera et al., 2013).

In the body samples, three canonical detoxification genes were up-regulated when fed with *A. incarnata*, including one UDP-glycosyltransferase (DPOGS209528) and two cytochrome P450s (DPOGS207643 and DPOGS213243). In addition, the top 15 up-regulated genes also include a cytochrome b5 (DPOGS210599), which is a redox partner to cytochrome P450 in the P450 system (Després et al., 2007). Five of the top 15 up-regulated genes when fed with *A. curassavica* encode cuticular proteins. Interestingly, cuticle proteins have also been found to be differentially expressed in other insects when feeding on different host plants (e.g. Birnbaum et al., 2017; Celorio-Mancera et al., 2013). Many of the remaining top differentially expressed genes (43.3% in gut and 30.0% in body) have unknown functions.

3.4 | Examination of specific gene sets

Given existing evidence from other herbivore systems mentioned previously (Smilanich et al., 2009) and our hypothesis that host plants affect immune gene expression, we examined whether any of the known canonical insect immune genes were differentially expressed when feeding on different milkweed species. Among the full set of differentially expressed genes between larvae fed *A. curassavica* and *A. incarnata*, we found that only four immune genes were significantly

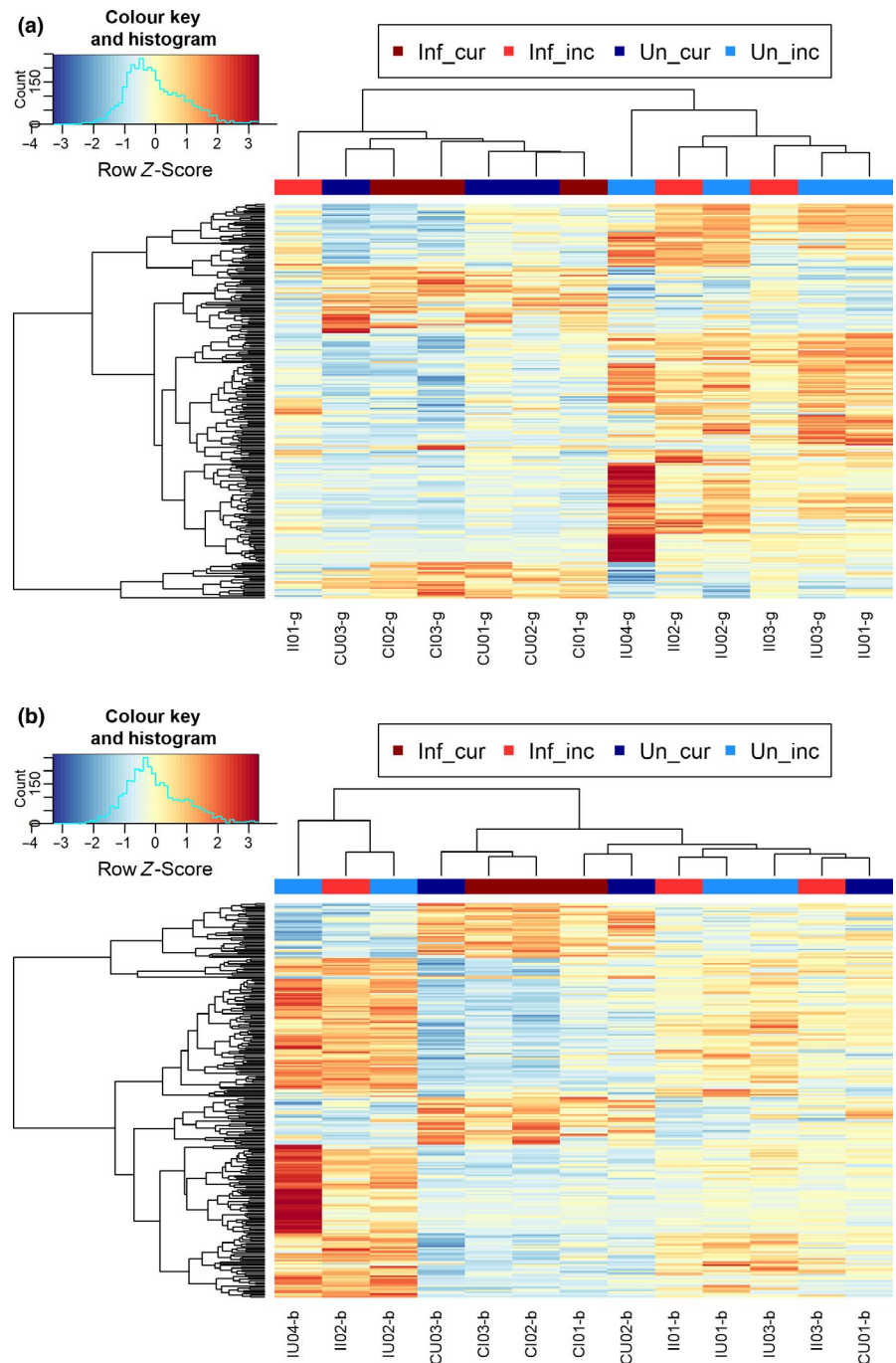
differentially expressed in gut tissue and only one immune gene was differentially expressed in whole-body tissue (Table 4). For the four differentially expressed immune genes associated with gut samples, two of them are CLIP serine proteases, one is a frep-like receptor, and the other one is a Toll-like receptor. The one differentially expressed gene associated with body samples is a CLIP serine protease that was also differentially expressed in the gut. Interestingly, all four of them were down-regulated in caterpillars fed *A. curassavica*, the more toxic species on which parasite growth was reduced. Overall, we did not find any support that more toxic milkweeds (i.e. *A. curassavica*) enhance the immunity of monarch larvae. Instead, we found weak support that feeding on more toxic milkweeds might cause down-regulation of a subset of immune genes.

Next, given that monarch larvae were fed with two milkweed species that differ greatly in toxicity, we examined whether any of the known canonical insect detoxification genes were differentially expressed when feeding on the two milkweed species. We focused on gut tissues here because the gut is the place of primary contact with plant materials, where initial digestion and detoxification take place, and because we found stronger differential expression in gut than body tissues. We found that a large proportion of known detoxification genes were expressed (Table 5). Moreover, the proportion of detoxification genes within all significantly differentially expressed genes (2.42%) was significantly higher than the proportion of all annotated genes in the genome that are detoxification genes (1.35%) ($\chi^2 = 6.12$, $df = 1$, $p = .013$), suggesting that they are overrepresented in the genes differentially expressed in monarchs reared on different milkweeds. The direction of differential expression was not universal, with some genes being up-regulated when on the toxic *A. curassavica* and others when on the less toxic *A. incarnata*. Specifically, 6 CYP450s, 2 UGTs and 1 GST were up-regulated in monarchs fed *A. curassavica*, while 3 CYP450s, 1 UGTs, 8 ABC transporters and 1 GST were up-regulated in monarchs fed *A. incarnata* (Table 5). Interestingly, all of the ABC transporters were only significantly up-regulated in monarchs fed with *A. incarnata*. Overall, our results demonstrate that several canonical detoxification genes were differentially expressed when larvae fed on the two milkweeds species with different levels of toxicity, suggesting that these genes are involved in metabolizing secondary compounds.

3.5 | Gene ontology enrichment analysis

Given that there were almost no differentially expressed genes across infection treatments, we only performed GO enrichment analysis on differentially expressed genes between larvae fed with different plant species. We performed separate analyses for significantly up-regulated genes in larvae fed with *A. curassavica* and significantly up-regulated genes in larvae fed with *A. incarnata* in the two tissue types. Among up-regulated genes in larvae reared on *A. curassavica*, we found a total of 19 GO terms significantly enriched in the gut tissue and one GO term significantly enriched in the body. Among up-regulated genes in *A. incarnata*-reared larvae, we found a total of 112 GO terms significantly enriched in the gut tissue and 6 GO terms significantly enriched

FIGURE 5 Heatmap and hierarchical clustering of the top 250 differentially expressed genes between larvae fed with *Asclepias curassavica* and *Asclepias incarnata*. (a) The result of gut samples. Hierarchical clustering shows that samples are clustered mostly based on the plant species larvae were fed with. (b) The result of body samples. The clustering patterns are less clear. “Inf_cur” represents infected larvae fed with *A. curassavica*; “Inf_inc” represents infected larvae fed with *A. incarnata*; “Un_cur” represents uninfected larvae fed with *A. curassavica*; “Un_inc” represents uninfected larvae fed with *A. incarnata*



in the body (Table 6). Significantly enriched GO terms for each group are shown in Figures 6 and 7. Overall, we found many more significantly enriched GO terms in gut tissue than in body and in larvae fed with *A. incarnata*. However, none of those GO terms have seemingly direct functional relevance to detoxification or immunity.

4 | DISCUSSION

This study examined differences in transcriptional profiles between monarch butterfly larvae feeding on two milkweed species and in response to infection by a specialist protozoan parasite. Our

results demonstrate that hundreds of genes were differentially expressed in gut and body when feeding on two different milkweed species. Given that these two milkweed species differ greatly in their concentrations of secondary chemicals (cardenolides) but little in nutrient composition (Tao, Ahmad, et al., 2016), these transcriptional differences are likely related to coping with different levels of toxicity in the diet. Consistent with this hypothesis, we found that several canonical insect detoxification genes were differentially expressed in monarchs reared on the two milkweed species. We discovered that many more genes were differentially expressed in gut than body tissue and that transcriptional profiles of gut samples formed more defined clusters, suggesting that

Gene ID	log ₂ FC	logCPM	FDR	Protein
Top 15 up-regulated genes in <i>A. curassavica</i>				
DPOGS201344	6.372	5.747	8.896E-05	Uncharacterized
DPOGS202254	5.589	5.739	1.040E-04	Threonine dehydratase catabolic-like isoform 2
DPOGS215709	5.049	13.155	1.596E-04	Uncharacterized
DPOGS212746	4.112	10.044	2.210E-04	Uncharacterized
DPOGS213427	4.699	4.654	2.947E-04	Phosphatidyltransferase
DPOGS204785	9.623	3.669	2.947E-04	Carboxypeptidase 4
DPOGS209145	7.309	6.446	4.455E-04	Uncharacterized
DPOGS204275	5.239	3.825	5.752E-04	Carboxyl/choline esterase
DPOGS213104	7.410	4.420	5.799E-04	Zinc finger protein
DPOGS204877	5.220	7.017	5.799E-04	Uncharacterized
DPOGS210488	10.030	-1.820	1.296E-03	Glutathione S-transferase epsilon 4
DPOGS205617	8.315	4.894	1.296E-03	Glucocerebrosidase
DPOGS200701	4.470	3.245	1.614E-03	Spliceosomal protein
DPOGS214834	2.985	6.014	1.746E-03	Juvenile hormone epoxide hydrolase
DPOGS206961	3.390	6.869	1.906E-03	Fructose 1,6-bisphosphate aldolase
Top 15 up-regulated genes in <i>A. incarnata</i>				
DPOGS213127	-14.990	2.053	2.820E-06	Nuclear receptor GRF
DPOGS209249	-21.366	5.499	6.322E-05	Uncharacterized
DPOGS205455	-11.005	1.492	8.896E-05	Uncharacterized
DPOGS215049	-8.676	3.715	1.040E-04	Peroxidase-like protein
DPOGS214337	-4.961	2.053	1.040E-04	Dystrophin
DPOGS206024	-4.189	4.407	1.040E-04	Uncharacterized
DPOGS205589	-10.789	5.246	1.909E-04	Hormone receptor 3C
DPOGS215508	-3.738	3.000	2.210E-04	Uncharacterized
DPOGS210943	-7.584	5.638	2.210E-04	Uncharacterized
DPOGS211620	-9.907	4.977	2.947E-04	Uncharacterized
DPOGS202595	-9.197	4.968	3.075E-04	Serpin-27
DPOGS209028	-8.462	1.370	3.075E-04	Uncharacterized
DPOGS207056	-10.801	0.320	3.075E-04	Uncharacterized
DPOGS200549	-5.086	1.072	3.075E-04	Aminopeptidase N-like protein
DPOGS200623	-8.542	2.970	3.075E-04	Moulting fluid carboxypeptidase

TABLE 2 List of top 15 differentially expressed genes in gut tissue between larvae fed with *Asclepias curassavica* and *Asclepias incarnata*. The list includes the top 15 genes significantly up-regulated when fed with *A. curassavica* and the top 15 genes significantly up-regulated when fed with *A. incarnata*

transcriptional responses in relation to milkweed diet are stronger in the gut than in the rest of the body. We also found four canonical immune genes that were differentially expressed between individuals fed on different milkweed species. Interestingly, all four immune genes were down-regulated in monarchs reared on *Asclepias curassavica*, the plant species that reduced parasite infection. In contrast with these transcriptional responses to milkweed diet, we found few transcriptional differences between infected and uninfected monarchs.

4.1 | Detoxification of plant secondary chemicals

Many plants produce secondary metabolites as defence chemicals against herbivores. In response, herbivorous insects express genes that function in several protective mechanisms, including enzymatic detoxification, excretion and sequestration (Després et al., 2007). Some previous studies have demonstrated that insects differentially express detoxification genes when feeding on plants with different levels of defence chemicals. For instance, *Drosophila mettleri*, a fruit

TABLE 3 List of top 15 differentially expressed genes in body tissues between larvae fed with *Asclepias curassavica* and *Asclepias incarnata*. The list includes the top 15 genes significantly up-regulated when fed with *A. curassavica* and the top 15 genes significantly up-regulated when fed with *A. incarnata*

Gene ID	log ₂ FC	logCPM	FDR	Protein
Top 15 up-regulated genes in <i>A. curassavica</i>				
DPOGS202254	5.862	5.916	3.531E-05	Threonine dehydratase catabolic-like isoform 2
DPOGS207974	8.391	3.079	4.263E-04	Cuticle protein
DPOGS210599	5.474	4.955	5.561E-04	Cytochrome b5
DPOGS207878	7.965	6.632	6.747E-04	Antennal binding protein
DPOGS209820	10.405	1.778	1.544E-03	Allantoicase
DPOGS204877	4.834	7.461	2.096E-03	Neuropeptide-like precursor
DPOGS209878	14.095	4.153	2.685E-03	Cuticle protein
DPOGS201344	4.463	4.569	2.685E-03	Uncharacterized
DPOGS213427	5.256	4.346	2.893E-03	Phosphatidyltransferase
DPOGS212746	4.380	10.241	3.452E-03	Uncharacterized
DPOGS204901	8.429	3.785	6.396E-03	Cuticle protein
DPOGS202353	2.649	4.584	6.396E-03	Serine protease inhibitor 32
DPOGS200671	9.672	2.135	6.396E-03	Cuticle protein
DPOGS204876	5.325	2.603	6.911E-03	Uncharacterized
DPOGS204902	7.870	2.782	6.911E-03	Cuticle protein
Top 15 up-regulated genes in <i>A. incarnata</i>				
DPOGS213127	-11.298	2.225	8.082E-06	Nuclear receptor GRF
DPOGS205589	-10.791	5.267	1.967E-05	Hormone receptor 3C
DPOGS216089	-7.901	2.515	3.531E-05	Uncharacterized
DPOGS209528	-11.924	2.200	6.803E-05	UDP-glycosyltransferase
DPOGS207933	-7.987	2.536	4.245E-04	Uncharacterized
DPOGS201723	-8.964	3.188	4.245E-04	Peritrophic matrix protein
DPOGS209249	-17.175	6.228	5.561E-04	Uncharacterized
DPOGS211620	-12.359	5.805	1.142E-03	Uncharacterized
DPOGS204937	-4.721	3.391	1.358E-03	Polypeptide N-acetylgalactosaminyltransferase
DPOGS212114	-14.837	3.068	1.358E-03	Laccase-like multicopper oxidase 2
DPOGS212041	-3.204	2.933	2.685E-03	Fibroblast growth factor receptor
DPOGS207643	-15.926	4.052	3.542E-03	Cytochrome P450 6AB4
DPOGS205455	-10.749	3.336	3.542E-03	Uncharacterized
DPOGS213243	-6.609	4.497	3.542E-03	Cytochrome P450
DPOGS201539	-12.438	6.447	3.542E-03	Uncharacterized

fly species specialized on cacti with toxic alkaloids, differentially expresses several detoxification genes, including P450s, UGTs, GST and carboxylesterases, when feeding on different food sources (Hoang, Matzkin, & Bono, 2015). *Tupiocoris notatus*, a mirid species, down-regulates several GST, UGT and P450s when feeding on defenceless (JA-silenced) *Nicotiana attenuata* (Crava, Brütting, & Baldwin, 2016). Similarly, our results demonstrate differences in transcriptional profiles of monarch larvae feeding on different milkweed species.

Several of those differentially expressed genes belong to canonical detoxification genes, including P450s, UGTs, GSTs and ABC transporters. Detoxification-related categories, however, were not significantly enriched in our enrichment analyses. While the majority of detoxification genes were expressed, only a relatively small proportion of them were differentially expressed between monarchs reared on the different plant species. Taken together, these results suggest that although a large number of detoxification genes are required for

Immune gene	Tissue	Direction	LogFC	LogCPM	FDR
CLIP serine protease (DPOGS215180)	Gut	Increased in <i>A. incarnata</i>	-5.94	1.61	0.003
Frep-like receptor (DPOGS203317)	Gut	Increased in <i>A. incarnata</i>	-4.85	1.79	0.007
CLIP serine protease (DPOGS213841)	Gut	Increased in <i>A. incarnata</i>	-6.73	-0.47	0.012
Toll-like receptor (DPOGS211472)	Gut	Increased in <i>A. incarnata</i>	-3.82	2.61	0.0140
CLIP serine protease (DPOGS215180)	Body	Increased in <i>A. incarnata</i>	-5.76	2.45	0.04

TABLE 4 Canonical immune genes that were significantly differentially expressed in gut tissue between larvae fed with *Asclepias curassavica* and *Asclepias incarnata*. No canonical immune genes were significantly differentially expressed between infected and uninfected larvae

metabolizing a toxic plant diet, only a relatively small proportion of them are related to dealing with variable levels of toxicity. Although our significantly enriched expression categories are not related to detoxification, many of them have also been reported in other studies of herbivorous insects. For instance, categories related to membrane, cuticle and ribosome are significantly enriched in *Polygonia c-album* when feeding on different plant species (Celorio-Mancera et al., 2013). Enrichment of cuticle-related and developmental-related genes when feeding on different host plants has also been reported in milkweed aphids (Birnbaum et al., 2017) and in several other herbivorous insects (Hoang et al., 2015; Mathers et al., 2017; Matzkin, 2012; Schweizer, Heidel-Fischer, Vogel, & Reymond, 2017; Zhong, Li, Chen, Zhang, & Li, 2017), suggesting that those genes might have pleiotropic effects on detoxification processes, or might be important for structuring of gut tissues. Thickening cuticular components has been suggested to reduce the penetration of insecticides, facilitating insecticide resistance (Foster et al., 2010). Alternatively, as certain insecticides are known to inhibit chitin synthesis (Leighton, Marks, & Leighton, 1981), it is possible that insects regulate the transcription of cuticle-related genes to deal with the interference of plant toxins on chitin metabolism and cuticular protein interactions (Celorio-Mancera et al., 2013).

CYP450 is one of the largest gene families in insects and catalyses a wide range of reactions (Werck-Reichhart & Feyereisen, 2000). In many insects (e.g. black swallowtail (*Papilio polyxenes*) and parsnip

webworm (*Depressaria pastinacella*)), the monooxygenase activity of P450s plays an important role in metabolizing plant toxins such as furanocoumarins (Mao, Rupasinghe, Zangerl, Schuler, & Berenbaum, 2006; Schuler, 1996; Wen, Pan, Berenbaum, & Schuler, 2003). Cardenolides are also substrates for CYP450 monooxygenases (Marty & Krieger, 1984), and it is assumed that milkweed-feeding insects metabolize cardenolides during the detoxification process (Agrawal et al., 2012). Our results indicate that many CYP450 genes are expressed and some of them are differentially expressed when feeding on milkweeds with different levels of cardenolides, suggesting that they play a role in detoxifying cardenolides. Furthermore, our chemical analyses comparing foliage and frass cardenolide composition identified specific cardenolides in frass that are not present in foliage, including several with high polarity. This result, consistent with a recent study (Jones et al., 2019), suggests that some of the cardenolides excreted via frass are likely modified forms, created through detoxification processes. Thus, CYP450 genes may play a role in this modulation, but future studies are needed to directly examine their function.

4.2 | Specialization on cardenolide-containing plants and sequestration of cardenolides

Despite the fact that milkweed-feeding insects have been one of the most studied systems in chemical ecology and plant-insect

Gene family	Annotated	Expressed	Increased in <i>A. curassavica</i>	Increased in <i>A. incarnata</i>
Cytochrome P450 (CYP)	75	72	6	3
UDP glucuronosyl-transferases (UGT)	35	34	2	1
ATP-binding cassette transporters (ABC transporters)	61	60	0	8
Glutathione S-transferases (GSTs)	33	31	1	1

TABLE 5 Canonical detoxification genes that were significantly differentially expressed in gut tissue between larvae fed with *Asclepias curassavica* and *Asclepias incarnata*

Note: The second column, "Annotated," indicates the number of annotated genes in the genome for the given gene family. The third column, "Expressed," indicates the number of genes that were expressed in our RNA-Seq data set (defined as counts > 0 in at least two samples). The last two columns show the number of significantly differentially expressed genes.

TABLE 6 Number of significantly functionally enriched Gene Ontology terms in gut and body tissues between larvae fed with *Asclepias curassavica* and *Asclepias incarnata*

Tissue type	direction	BP	MF	CC	Total
Gut	Increased in <i>A. curassavica</i>	9	3	7	19
Gut	Increased in <i>A. incarnata</i>	102	0	10	112
Body	Increased in <i>A. curassavica</i>	0	1	0	1
Body	Increased in <i>A. incarnata</i>	4	2	0	6

Note: Multiple testing was accounted for using the Benjamini–Hochberg method. Abbreviations: BP, biological process, CC, cellular component, MF, molecular function.

interactions, to our knowledge, very few studies have characterized global transcriptional responses of specialist insects when feeding on milkweeds. Recently, Birnbaum et al. (2017) compared transcriptional profiles using both RNA-Seq and qPCR of milkweed aphids (*Aphid nerii*) fed on three different milkweed species, including the plant species used in our study. Similar to our study, they found differential expression of canonical insect detoxification genes, including genes belonging to CYP450s, UGTs, GSTs and ABC transporters. In addition, their findings and our results both indicate that a greater number of genes are down-regulated rather than up-regulated when milkweed-specialized insects feed on more toxic plant species (Table 1; Birnbaum et al., 2017). Although both studies on milkweed-feeding insects showed similar results, milkweed aphids do not have the target site mutations on Na⁺/K⁺-ATPase that confer resistance to cardenolides in monarchs (Zhen et al., 2012), suggesting that they rely on other mechanisms to cope with cardenolides. A previous study across three milkweed-feeding butterflies that differ in target site sensitivity indicated that resistance conferred by target site insensitivity has a stronger association with sequestering cardenolides than with digesting cardenolide-rich diets (Petschenka & Agrawal, 2015). Therefore, since the two species differ in target site sensitivity but exhibit similar transcriptional responses to feeding on more toxic plants, the differentially expressed genes may be important in sequestration processes, as both species sequester cardenolides as a defence against predators (Rosenthal & Berenbaum, 1991).

Previous studies have demonstrated that monarch larvae can regulate the level of cardenolide sequestration, as indicated by the fact that cardenolide concentration in larval hemolymph and milkweed leaves do not show a linear relationship (Rosenthal & Berenbaum, 1991). Interestingly, monarchs concentrate cardenolides when feeding on low-cardenolide plants and sequester at a lower rate when feeding on plants with a very high concentration of cardenolides (Jones et al., 2019; Malcolm, 1991). Notably, our results show that all the differentially expressed ABC transporters were up-regulated in larvae fed *Asclepias incarnata*, a milkweed species with very low-cardenolide concentrations. Studies of other insect systems have shown that ABC transporters are involved in sequestration processes. For example, ABC transporters play a key role in salicin sequestration in poplar leaf beetles (*Chrysomela populi*) (Strauss, Peters, Boland, & Burse, 2013). Therefore, the up-regulation of ABC transporters when feeding on low-cardenolide milkweed

compared to feeding on high-cardenolide milkweed might be related to an increased rate of cardenolide sequestration. Although larvae may exhibit a relatively lower sequestration rate when feeding on *A. curassavica* than *A. incarnata*, given the drastic difference in foliage cardenolide concentration (95-fold), the total amount of cardenolide sequestered in larval tissue likely is much higher when fed *A. curassavica*, which has been demonstrated in previous studies (Decker, Soule, de Roode, & Hunter, 2019; Jones et al., 2019).

4.3 | The effects of plant diet on immunity

Some studies have demonstrated that plant diets with high toxicity can reduce immune responses of herbivorous insects (Smilanich et al., 2009). Detoxification and sequestration of plant toxins can be energetically costly (Bowers, 1992), so a reduction in immune function could be caused by trade-offs with these processes (Moret & Schmid-Hempel, 2000). Plant toxins may have direct negative effects on immune cells (Smilanich et al., 2009). Alternatively, insect hosts may invest less in immunity when antiparasite resistance is provided by host plants instead. In our study, although we did not find a strong overall effect of plant diet on the expression of canonical immune genes, we observed reduced expression of four immune genes in monarchs feeding on *A. curassavica*, the antiparasitic plant species. This does not preclude the possibility that other monarch immune defences not captured by gene expression differences may be influenced by host plant diet. Future studies should couple investigation of immune gene expression with studies of cellular immune responses and should strive to characterize the function of the many genes of unknown function in monarchs, some of which could play a role in antiparasitic defence.

In the context of herbivore–parasite interactions, medicinal effects conferred by plant diet could be mediated by either direct or indirect effects of plant toxins on parasites. Specifically, medicinal compounds may directly interfere with parasites or may indirectly enhance disease resistance by stimulating immune responses. In the former scenario, investment in immune responses may be reduced because they are compensated for by the medicinal compounds. Indeed, recent studies have demonstrated that the use of medicinal compounds reduces immune investment in a variety of insect species. For example, honeybees (*Apis mellifera*) provided with resins, which have antimicrobial properties, exhibit reduced expression of two immune genes (Simone, Evans,

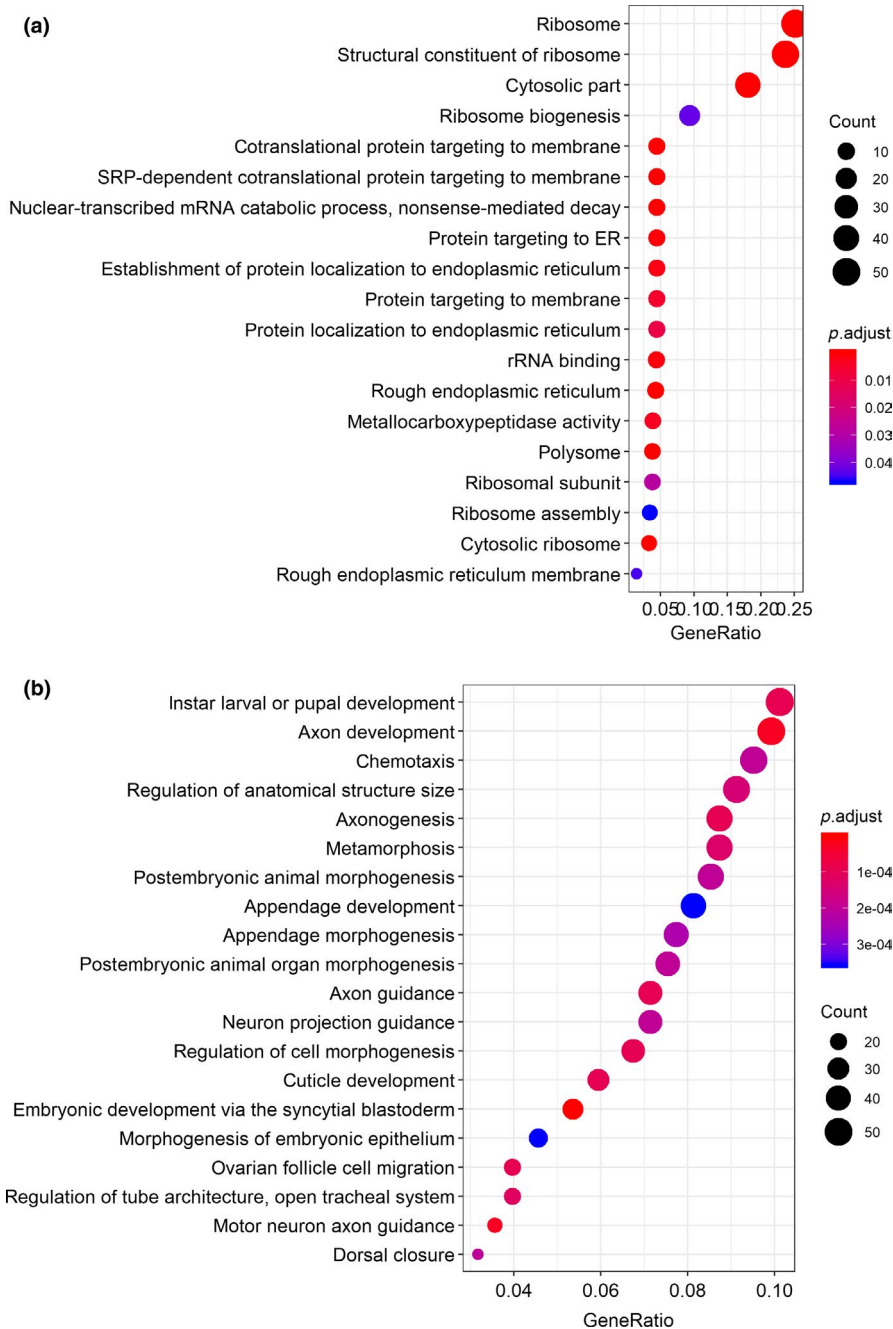
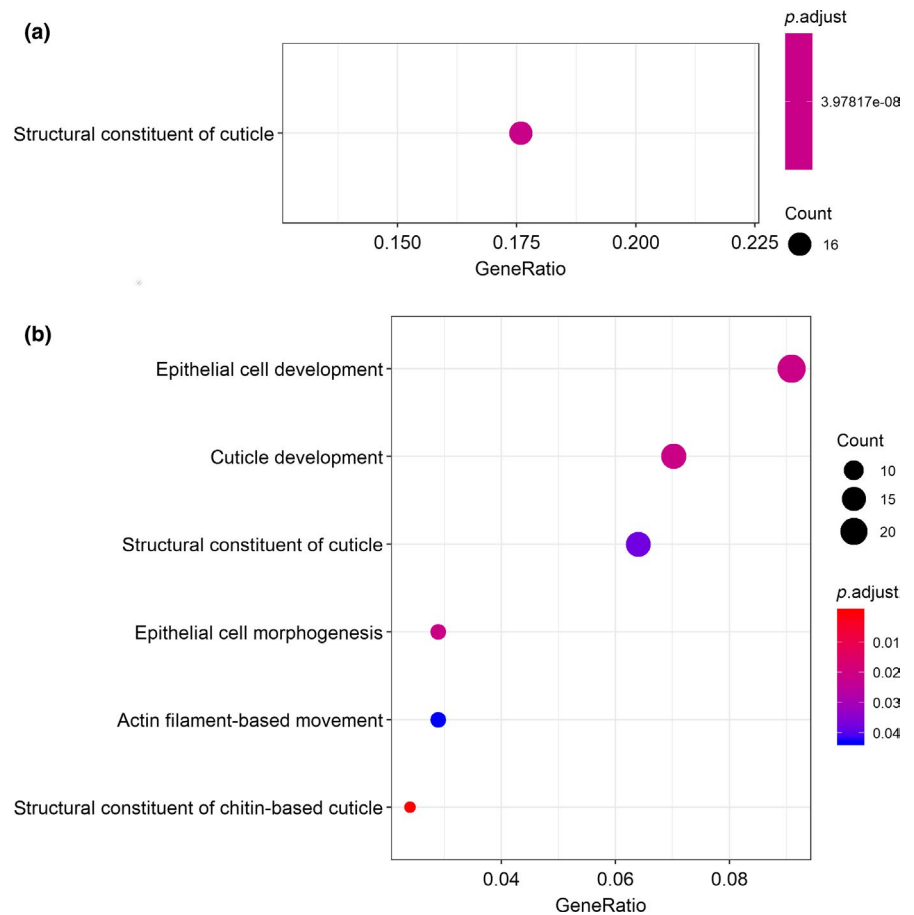


FIGURE 6 Significantly functionally enriched Gene Ontology terms in gut tissue between larvae fed with *Asclepias curassavica* and *Asclepias incarnata*. (a) 19 significant terms in up-regulated genes in *A. curassavica*. (b) 116 significant terms in up-regulated genes in *A. incarnata*. Only the top 20 were shown. The x-axis represents the proportion of genes that belong to a given functional category to the total number of differentially expressed genes. All three ontology terms (BP, MF, CC) were included. BP, biological process; CC, cellular component; MF, molecular function. p -Values were corrected using the Benjamini–Hochberg method [Colour figure can be viewed at wileyonlinelibrary.com]

& Spivak, 2009). Similarly, the presence of resins also reduces humoral immune responses in wood ants (*Formica paralugubris*) (Castella, Chapuisat, Moret, & Christe, 2008). Furthermore, long-term association with medicinal compounds might lead to relaxed selection on immune genes. The genome of honeybees (*Apis mellifera*) has a reduced number of canonical insect immune genes, possibly due to the use of medicinal compounds and behavioural defence mechanisms (Evans et al., 2006). Our results show that all four significantly differentially expressed canonical immune genes were down-regulated in monarchs fed with *A. curassavica*, which is in line with the hypothesis that medicinal milkweeds lead to reduced investment in immunity. These results also raise the possibility that toxin sequestration is a less

costly defence mechanism than immunity, but further study is required to investigate the relative cost of alternative defence mechanisms both in this system and across a wider range of taxa. Interestingly, one of the immune genes that was down-regulated in larvae feeding on *A. curassavica* is a FREP-like receptor (DPOGS203317). Previous studies of infection of insects by another apicomplexan parasite (*Plasmodium* in *Anopheles gambiae*), which also infects insects through the midgut wall, have shown that several fibrinogen-related proteins (FREPs) play an important role in antiparasitic defence. For example, overexpression of FREP13 results in increased resistance to *Plasmodium* infection (Dong & Dimopoulos, 2009; Simões et al., 2017). In contrast, inactivation of FREP1 increases resistance, because FREP1

FIGURE 7 Significantly functionally enriched Gene Ontology terms in body tissue between larvae fed with *Asclepias curassavica* and *Asclepias incarnata*. (a) One significant term in up-regulated genes in *A. curassavica*. (b) Six significant terms in up-regulated genes in *A. incarnata*. The x-axis represents the proportion of genes that belong to a given functional category to the total number of differentially expressed genes. All three ontology terms (BP, MF and CC) were included. BP, biological process; CC, cellular component; MF, molecular function. *p*-Values were corrected using the Benjamini–Hochberg method [Colour figure can be viewed at wileyonlinelibrary.com]



functions as an important host factor that mediates *Plasmodium* ookinete's invasion of the mosquito midgut epithelium (Dong, Simões, Marois, & Dimopoulos, 2018; Zhang et al., 2015). Our results show down-regulation of a FREP-like gene when larvae feed on a milkweed that confers stronger resistance to parasite infection. However, the exact function of this FREP-like gene remains unknown. In addition, two other immune genes that were down-regulated when feeding on *A. curassavica* are CLIP serine proteases (DPOGS215180 and DPOGS213841). CLIP serine proteases are a large gene family (Christophides et al., 2002), and some of them play an important role in antimalaria defence (Barillas-Mury, 2007; Volz, Müller, Zdanowicz, Kafatos, & Osta, 2006). Future studies that directly examine the function of these particular immune genes are needed to understand their potential role in defence against *O. elektroscirra* infections.

4.4 | Transcriptional responses in relation to parasite infection

Our study confirmed previous findings that monarch larvae fed with *A. curassavica* (high cardenolide) have stronger antiparasite resistance than those fed with *A. incarnata* (low-cardenolide; Figure 1b). Nevertheless, we observed almost no transcriptional response to parasite infection regardless of host plant diet. There are four possible explanations for these results. First, the

parasite might be able to suppress or evade the host immune system, which has been demonstrated in several other specialist parasites (Gurung & Kanneganti, 2015; MacGregor, Szöör, Savill, & Matthews, 2012; Selkirk, Bundy, Smith, Anderson, & Maizels, 2003). Second, the infection may not induce a systemic response; the immune responses may instead have occurred locally and hence may not have been detectable when sequencing the transcriptome of the gut or body. Third, early instars may not have strong immune responses against infection. Although in general later instars have a more developed immune system and stronger responses (Strand, 2008), we chose second instar because larvae most likely become infected with *O. elektroscirra* during early instars under natural conditions (Altizer et al., 2004; de Roode et al., 2009). Fourth, it is possible that the time point we chose did not capture host responses against the parasite. We chose a 24-hr time point postinfection because a previous study showed that milkweeds confer resistance within that timeframe (de Roode et al., 2011) and because mosquitoes exhibit up-regulation in midgut-based immune responses to apicomplexan parasites within this timeframe (Blumberg et al., 2013; Vlachou et al., 2005). However, it is possible that the parasite is more active and/or has a stronger interaction with the host immune system at different stages of the infection cycle. Thus, additional life stages should be taken into consideration in future analyses.

5 | CONCLUSIONS

We compared transcriptional profiles of monarch larvae fed two different milkweed species and examined larval transcriptional responses to infection by a specialist parasite. Our results demonstrate that monarch larvae differentially express hundreds of genes when feeding on *A. curassavica* or *A. incarnata*, two milkweed species that differ strongly in their secondary chemical content. Those differentially expressed genes include genes within multiple families of canonical insect detoxification genes, suggesting they play a role in processing plant diets with different levels of toxicity. Notably, all ABC transporters were up-regulated in monarchs fed with *A. incarnata*, the less toxic plant, which might be related to an increased cardenolide sequestration. Interestingly, the few immune genes that were differentially expressed in monarchs reared on the two plant species were all down-regulated on the antiparasitic *A. curassavica*, consistent with the hypothesis that medicinal plants could reduce immune investment by providing an alternative form of antiparasite defence.

ACKNOWLEDGMENTS

We thank W. Palmer for providing immune gene annotation resources for *Danaus plexippus*, A. Berasategui, E. Diaz-Almeyda, H. Salem, C. Beck, S. Birnbaum, B.-W. Lo, E. Whittington and V. Talla for helpful discussion on this research, A. Salmi and K. Baffour-Ado for help with the experiments, H. Streit for performing the chemical analyses and an anonymous reviewer for providing constructive comments on the manuscript. Computational analyses were performed on resources provided by the University of Kansas Information and Telecommunication Technology Center. This work was supported by National Science Foundation (NSF) grant IOS-1557724 to J.C.dR., N.M.G. and M.D.H.; NSF Graduate Research Fellowship Program DGE-1444932 to E.V.H.; and NSF grant DEB-1457758 to J.R.W.

AUTHOR CONTRIBUTIONS

W.H.T. designed and carried out experiments, performed data analyses and wrote the initial manuscript. N.M.G., M.D.H. and J.C.dR. designed experiments and edited the manuscript. T.A., E.V.H., T.Y.A. and J.C.dR. carried out experiments. J.R.W. provided additional guidance on transcriptomic analyses. M.D.H. supervised chemical analyses. All authors have reviewed and provided comments on the manuscript.

DATA AVAILABILITY STATEMENT

All sequence data are available at the NCBI GeneBank (Accession no. SRP214523) and other data are available at the Dryad Digital Repository (<https://doi.org/10.5061/dryad.53t43dm>). Custom transcriptomic analysis scripts can be found in the following GitHub repository: https://github.com/WaltersLab/Monarch_RNA-Seq

ORCID

Wen-Hao Tan  <https://orcid.org/0000-0003-2767-3849>

REFERENCES

- Agrawal, A. A. (2005). Natural selection on common milkweed (*Asclepias syriaca*) by a community of specialized insect herbivores. *Evolutionary Ecology Research*, 7(5), 651–667. <https://doi.org/10.1021/ct300848z>
- Agrawal, A. A., Petschenka, G., Bingham, R. A., Weber, M. G., & Rasmann, S. (2012). Toxic cardenolides: Chemical ecology and coevolution of specialized plant-herbivore interactions. *New Phytologist*, 194(1), 28–45. <https://doi.org/10.1111/j.1469-8137.2011.04049.x>
- Altizer, S., Oberhauser, K. S., & Geurts, K. A. (2004). Transmission of the protozoan parasite *Ophryocystis elektroscirrha* in monarch butterfly populations: Implications for prevalence and population-level impacts. In K. S. Oberhauser, & M. J. Solensky (Eds.), *The monarch butterfly: Biology and conservation* (pp. 203–218). Ithaca, NY and London, UK: Cornell University Press
- Andrews, S. (2010). *FastQC: A quality control tool for high throughput sequence data*. Retrieved from <https://www.bioinformatics.babraham.ac.uk/projects/fastqc/>
- Barillas-Mury, C. (2007). CLIP proteases and *Plasmodium* melanization in *Anopheles gambiae*. *Trends in Parasitology*, 23(7), 297–299. <https://doi.org/10.1016/j.pt.2007.05.001>
- Benjamini, Y., & Hochberg, Y. (1995). Controlling the false discovery rate: A practical and powerful approach to multiple testing. *Journal of the Royal Statistical Society. Series B (Methodological)*, 57(1), 289–300. <https://doi.org/10.1111/j.2517-6161.1995.tb02031.x>
- Birnbaum, S. S., Rinker, D. C., Gerardo, N. M., & Abbot, P. (2017). Transcriptional profile and differential fitness in a specialist milkweed insect across host plants varying in toxicity. *Molecular Ecology*, 26(23), 6742–6761. <https://doi.org/10.1111/mec.14401>
- Blumberg, B. J., Trop, S., Das, S., & Dimopoulos, G. (2013). Bacteria- and IMD pathway-independent immune defenses against *Plasmodium falciparum* in *Anopheles gambiae*. *PLoS ONE*, 8(9), e72130. <https://doi.org/10.1371/journal.pone.0072130>
- Bowers, M. D. (1992). The evolution of unpalatability and the cost of chemical defense in insects. In M. B. Roitberg, & B.D. & Isman, (Eds.), *Insect chemical ecology: An evolutionary approach* (pp. 216–244). New York, NY: Chapman & Hall.
- Bradley, C. A., & Altizer, S. (2005). Parasites hinder monarch butterfly flight: Implications for disease spread in migratory hosts. *Ecology Letters*, 8(3), 290–300. <https://doi.org/10.1111/j.1461-0248.2005.00722.x>
- Brower, L. P., Ryerson, W. N., Coppinger, L. L., & Susan, C. (1968). Ecological chemistry and the palatability spectrum. *Science*, 161(3848), 1349–1351.
- Carlson, M., & Pages, H. (2018). *AnnotationForge: Code for building annotation database packages*. R package version, 1.24.0.
- Castella, G., Chapuisat, M., Moret, Y., & Christe, P. (2008). The presence of conifer resin decreases the use of the immune system in wood ants. *Ecological Entomology*, 33(3), 408–412. <https://doi.org/10.1111/j.1365-2311.2007.00983.x>
- Christophides, G. K., Zdobnov, E., Barillas-Mury, C., Birney, E., Blandin, S., Blass, C., ... Kafatos, F. C. (2002). Immunity-related genes and gene families in *Anopheles gambiae*. *Science*, 298(5591), 159–165. <https://doi.org/10.1126/science.1077136>
- Crava, C. M., Brütting, C., & Baldwin, I. T. (2016). Transcriptome profiling reveals differential gene expression of detoxification enzymes in a hemimetabolous tobacco pest after feeding on jasmonate-silenced *Nicotiana attenuata* plants. *BMC Genomics*, 17(1), 1005. <https://doi.org/10.1186/s12864-016-3348-0>
- Dasmahapatra, K. K., Walters, J. R., Briscoe, A. D., Davey, J. W., Whibley, A., Nadeau, N. J., ... Jiggins, C. D. (2012). Butterfly genome reveals

- promiscuous exchange of mimicry adaptations among species. *Nature*, 487(7405), 94–98. <https://doi.org/10.1038/nature11041>
- de la Paz Celorio-Mancera, M., Wheat, C. W., Vogel, H., Söderlind, L., Janz, N., & Nylin, S. (2013). Mechanisms of macroevolution: Polyphagous plasticity in butterfly larvae revealed by RNA-Seq. *Molecular Ecology*, 22(19), 4884–4895. <https://doi.org/10.1111/mec.12440>
- de Roode, J. C., Chi, J., Rarick, R. M., & Altizer, S. (2009). Strength in numbers: High parasite burdens increase transmission of a protozoan parasite of monarch butterflies (*Danaus plexippus*). *Oecologia*, 161(1), 67–75. <https://doi.org/10.1007/s00442-009-1361-6>
- de Roode, J. C., Fernandez de Castillejo, C. L., Faits, T., & Alizon, S. (2011). Virulence evolution in response to anti-infection resistance: Toxic food plants can select for virulent parasites of monarch butterflies. *Journal of Evolutionary Biology*, 24(4), 712–722. <https://doi.org/10.1111/j.1420-9101.2010.02213.x>
- de Roode, J. C., Gold, L. R., & Altizer, S. (2007). Virulence determinants in a natural butterfly-parasite system. *Parasitology*, 134(Pt 5), 657–668. <https://doi.org/10.1017/S0031182006002009>
- de Roode, J. C., Pedersen, A. B., Hunter, M. D., & Altizer, S. (2008). Host plant species affects virulence in monarch butterfly parasites. *Journal of Animal Ecology*, 77(1), 120–126. <https://doi.org/10.1111/j.1365-2656.2007.01305.x>
- de Roode, J. C., Rarick, R. M., Mongue, A. J., Gerardo, N. M., & Hunter, M. D. (2011). Aphids indirectly increase virulence and transmission potential of a monarch butterfly parasite by reducing defensive chemistry of a shared food plant. *Ecology Letters*, 14(5), 453–461. <https://doi.org/10.1111/j.1461-0248.2011.01604.x>
- de Roode, J. C., Yates, A. J., & Altizer, S. (2008). Virulence-transmission trade-offs and population divergence in virulence in a naturally occurring butterfly parasite. *Proceedings of the National Academy of Sciences of the United States of America*, 105(21), 7489–7494. <https://doi.org/10.1073/pnas.0710909105>
- Decker, L. E., Soule, A. J., de Roode, J. C., & Hunter, M. D. (2019). Phytochemical changes in milkweed induced by elevated CO₂ alter wing morphology but not toxin sequestration in monarch butterflies. *Functional Ecology*, 33(3), 411–421. <https://doi.org/10.1111/1365-2435.13270>
- Després, L., David, J. P., & Gallet, C. (2007). The evolutionary ecology of insect resistance to plant chemicals. *Trends in Ecology & Evolution*, 22(6), 298–307. <https://doi.org/10.1016/j.tree.2007.02.010>
- Dobin, A., Davis, C. A., Schlesinger, F., Drenkow, J., Zaleski, C., Jha, S., ... Gingeras, T. R. (2013). STAR: Ultrafast universal RNA-seq aligner. *Bioinformatics*, 29(1), 15–21. <https://doi.org/10.1093/bioinformatics/bts635>
- Dobler, S., Dalla, S., Wagschal, V., & Agrawal, A. A. (2012). Community-wide convergent evolution in insect adaptation to toxic cardenolides by substitutions in the Na, K-ATPase. *Proceedings of the National Academy of Sciences of the United States of America*, 109(32), 13040–13045. <https://doi.org/10.1073/pnas.1202111109>
- Dong, Y., & Dimopoulos, G. (2009). *Anopheles* fibrinogen-related proteins provide expanded pattern recognition capacity against bacteria and malaria parasites. *Journal of Biological Chemistry*, 284(15), 9835–9844. <https://doi.org/10.1074/jbc.M807084200>
- Dong, Y., Simões, M. L., Marois, E., & Dimopoulos, G. (2018). CRISPR/Cas9-mediated gene knockout of *Anopheles gambiae* FREP1 suppresses malaria parasite infection. *PLoS Path*, 14(3), e1006898. <https://doi.org/10.1371/journal.ppat.1006898>
- Dyer, L. A., & Bowers, M. D. (1996). The importance of sequestered iridoid glycosides as a defense against an ant predator. *Journal of Chemical Ecology*, 22(8), 1527–1539. <https://doi.org/10.1007/BF02027729>
- Evans, J. D., Aronstein, K., Chen, Y. P., Hetru, C., Imler, J.-L., Jiang, H., ... Hultmark, D. (2006). Immune pathways and defence mechanisms in honey bees *Apis mellifera*. *Insect Molecular Biology*, 15(5), 645–656. <https://doi.org/10.1111/j.1365-2583.2006.00682.x>
- Ewels, P., Magnusson, M., Lundin, S., & Käller, M. (2016). MultiQC: Summarize analysis results for multiple tools and samples in a single report. *Bioinformatics*, 32(19), 3047–3048. <https://doi.org/10.1093/bioinformatics/btw354>
- Gowler, C. D., Leon, K. E., Hunter, M. D., & de Roode, J. C. (2015). Secondary defense chemicals in milkweed reduce parasite infection in monarch butterflies, *Danaus plexippus*. *Journal of Chemical Ecology*, 41(6), 520–523. <https://doi.org/10.1007/s10886-015-0586-6>
- Gurung, P., & Kanneganti, T. D. (2015). Innate immunity against *Leishmania* infections. *Cellular Microbiology*, 17(9), 1286–1294. <https://doi.org/10.1111/cmi.12484>
- Hoang, K. L., Matzkin, L. M., & Bono, J. M. (2015). Transcriptional variation associated with cactus host plant adaptation in *Drosophila mettleri* populations. *Molecular Ecology*, 24(20), 5186–5199. <https://doi.org/10.1111/mec.13388>
- Jones, P. L., Peschenka, G., Flacht, L., & Agrawal, A. A. (2019). Cardenolide intake, sequestration, and excretion by the monarch butterfly along gradients of plant toxicity and larval ontogeny. *Journal of Chemical Ecology*, <https://doi.org/10.1007/s10886-019-01055-7>
- Lampert, E. C. (2012). Influences of plant traits on immune responses of specialist and generalist herbivores. *Insects*, 3(2), 573–592. <https://doi.org/10.3390/insects3020573>
- Laurentz, M., Reudler, J. H., Mappes, J., Friman, V., Ikonen, S., & Lindstedt, C. (2012). Diet quality can play a critical role in defense efficacy against parasitoids and pathogens in the glanville fritillary (*Melitaea cinxia*). *Journal of Chemical Ecology*, 38(1), 116–125. <https://doi.org/10.1007/s10886-012-0066-1>
- Lefèvre, T., Oliver, L., Hunter, M. D., & de Roode, J. C. (2010). Evidence for trans-generational medication in nature. *Ecology Letters*, 13(12), 1485–1493. <https://doi.org/10.1111/j.1461-0248.2010.01537.x>
- Leighton, T., Marks, E., & Leighton, F. (1981). Pesticides: Insecticides and fungicides are chitin synthesis inhibitors. *Science*, 213(4510), 905–907.
- MacGregor, P., Szöör, B., Savill, N. J., & Matthews, K. R. (2012). Trypanosomal immune evasion, chronicity and transmission: An elegant balancing act. *Nature Reviews Microbiology*, 10(6), 431–438. <https://doi.org/10.1038/nrmicro2779>
- Malcolm, S. B. (1991). Cardenolide-mediated interactions between plants and herbivores. In G. Rosenthal, & M. Berenbaum (Eds.), *Herbivores: Their interactions with secondary plant metabolites, Vol. I: The chemical participants* (2nd edn, pp. 251–291). San Diego, CA: Academic Press.
- Malcolm, S. B. (1994). Milkweeds, monarch butterflies and the ecological significance of cardenolides. *Chemoecology*, 5(3–4), 101–117. <https://doi.org/10.1007/BF01240595>
- Mao, W., Rupasinghe, S., Zangerl, A. R., Schuler, M. A., & Berenbaum, M. R. (2006). Remarkable substrate-specificity of CYP6AB3 in *Depressaria pastinacella*, a highly specialized caterpillar. *Insect Molecular Biology*, 15(2), 169–179. <https://doi.org/10.1111/j.1365-2583.2006.00623.x>
- Marty, M. A., & Krieger, R. I. (1984). Metabolism of uscharidin, a milkweed cardenolide, by tissue homogenates of monarch butterfly larvae, *Danaus plexippus* L. *Journal of Chemical Ecology*, 10(6), 945–956. <https://doi.org/10.1007/BF00987975>
- Mathers, T. C., Chen, Y., Kaithakottil, G., Legeai, F., Mugford, S. T., Baa-Puyoulet, P., ... Hogenhout, S. A. (2017). Rapid transcriptional plasticity of duplicated gene clusters enables a clonally reproducing aphid to colonise diverse plant species. *Genome Biology*, 18(1), 1–20. <https://doi.org/10.1186/s13059-016-1145-3>
- Matzkin, L. M. (2012). Population transcriptomics of cactus host shifts in *Drosophila mojavensis*. *Molecular Ecology*, 21(10), 2428–2439. <https://doi.org/10.1111/j.1365-294X.2012.05549.x>
- Mclaughlin, R. E., & Myers, J. (1970). *Ophrypcystis elektrosirrha* sp., a Neogregarine pathogen of monarch butterfly *Danaus plexippus* (L.) and the Florida queen butterfly *D. gilippus berenice* Cramer. *Journal of Protozoology*, 17(2), 300–305. <https://doi.org/10.1111/j.1550-7408.1970.tb02375.x>

- Moret, Y., & Schmid-Hempel, P. (2000). Survival for immunity: The price of immune system activation for bumblebee workers. *Science*, 290(November), 1166–1169. <https://doi.org/10.1126/science.290.5494.1166>
- Nishida, R. (2002). Sequestration of defense substances from plants by Lepidoptera. *Annual Review of Entomology*, 47, 57–92. <https://doi.org/10.1146/annurev.ento.47.091201.145121>
- Opitz, S. E. W., & Müller, C. (2009). Plant chemistry and insect sequestration. *Chemoecology*, 19(3), 117–154. <https://doi.org/10.1007/s00049-009-0018-6>
- Petschenka, G., & Agrawal, A. A. (2015). Milkweed butterfly resistance to plant toxins is linked to sequestration, not coping with a toxic diet. *Proceedings of the Royal Society B: Biological Sciences*, 282(1818), 20151865. <https://doi.org/10.1098/rspb.2015.1865>
- Petschenka, G., Offe, J. K., & Dobler, S. (2012). Physiological screening for target site insensitivity and localization of Na⁺/K⁺-ATPase in cardenolide-adapted Lepidoptera. *Journal of Insect Physiology*, 58(5), 607–612. <https://doi.org/10.1016/j.jinsphys.2011.12.012>
- Puinean, A. M., Foster, S. P., Oliphant, L., Denholm, I., Field, L. M., Millar, N. S., ... Bass, C. (2010). Amplification of a cytochrome P450 gene is associated with resistance to neonicotinoid insecticides in the aphid *Myzus persicae*. *PLoS Genetics*, 6(6), e1000999. <https://doi.org/10.1371/journal.pgen.1000999>
- R Core Team. (2018). *R: A language and environment for statistical computing*. Vienna, Austria: R Foundation for Statistical Computing. Retrieved from <https://www.r-project.org/>
- Robinson, M. D., McCarthy, D. J., & Smyth, G. K. (2009). EDGER: A Bioconductor package for differential expression analysis of digital gene expression data. *Bioinformatics*, 26(1), 139–140. <https://doi.org/10.1093/bioinformatics/btp616>
- Rosenthal, G., & Berenbaum, M. R. (1991). *Herbivores: Their interaction with secondary plant metabolites, Vol. II: Ecological and evolutionary processes* (2nd edn). San Diego, CA: Academic Press.
- Schoonhoven, L., van Loon, J., & Dicke, M. (2005). *Insect-plant biology* (2nd edn). New York, NY: Oxford University Press.
- Schuler, M. A. (1996). The role of cytochrome P450 monooxygenases in plant-insect interactions. *Plant Physiology*, 112, 1411–1419. <https://doi.org/10.1104/pp.112.4.1411>
- Schweizer, F., Heidel-Fischer, H., Vogel, H., & Reymond, P. (2017). Arabidopsis glucosinolates trigger a contrasting transcriptomic response in a generalist and a specialist herbivore. *Insect Biochemistry and Molecular Biology*, 85, 21–31. <https://doi.org/10.1016/j.ibmb.2017.04.004>
- Selkirk, M. E., Bundy, D. A. P., Smith, D. F., Anderson, R. M., & Maizels, R. M. (2003). Immunological modulation and evasion by helminth parasites in human populations. *Nature*, 365(6449), 797–805. <https://doi.org/10.1038/365797a0>
- Simões, M. L., Dong, Y., Hammond, A., Hall, A., Crisanti, A., Nolan, T., & Dimopoulos, G. (2017). The *Anopheles* FBN9 immune factor mediates *Plasmodium* species-specific defense through transgenic fat body expression. *Developmental and Comparative Immunology*, 67, 257–265. <https://doi.org/10.1016/j.dci.2016.09.012>
- Simone, M., Evans, J. D., & Spivak, M. (2009). Resin collection and social immunity in honey bees. *Evolution*, 63(11), 3016–3022. <https://doi.org/10.1111/j.1558-5646.2009.00772.x>
- Singer, M. S., Mace, K. C., & Bernays, E. A. (2009). Self-medication as adaptive plasticity: Increased ingestion of plant toxins by parasitized caterpillars. *PLoS ONE*, 4(3), e4796. <https://doi.org/10.1371/journal.pone.0004796>
- Smilanich, A. M., Dyer, L. A., Chambers, J. Q., & Bowers, M. D. (2009). Immunological cost of chemical defence and the evolution of herbivore diet breadth. *Ecology Letters*, 12(7), 612–621. <https://doi.org/10.1111/j.1461-0248.2009.01309.x>
- Smilanich, A. M., Teglas, M. B., Harrison, J. G., Hsueh, J., Dyer, L. A., Langus, T. C., & Doan, L. (2017). Host plant associated enhancement of immunity and survival in virus infected caterpillars. *Journal of Invertebrate Pathology*, 151(October), 102–112. <https://doi.org/10.1016/j.jip.2017.11.006>
- Smilanich, A. M., Vargas, J., Dyer, L. A., & Bowers, M. D. (2011). Effects of ingested secondary metabolites on the immune response of a polyphagous caterpillar *Grammia incorrupta*. *Journal of Chemical Ecology*, 37(3), 239–245. <https://doi.org/10.1007/s10886-011-9924-5>
- Sternberg, E. D., deRoode, J. C., & Hunter, M. D. (2015). Trans-generational parasite protection associated with paternal diet. *Journal of Animal Ecology*, 84(1), 310–321. <https://doi.org/10.1111/1365-2656.12289>
- Sternberg, E. D., Lefèvre, T., Li, J., Lopez, C., Castillejo, F. D., Li, H., ... de Roode, J. C. (2012). Food plant-derived disease tolerance and resistance in a natural butterfly-plant-parasite interactions. *Evolution*, 66(11), 3367–3377. <https://doi.org/10.5061/dryad.82j66>
- Strand, M. R. (2008). Insect hemocytes and their role in immunity. In N. Beckage (Ed.), *Insect immunology* (pp. 25–47). San Diego, CA: Academic Press.
- Strauss, A. S., Peters, S., Boland, W., & Burse, A. (2013). ABC transporter functions as a pacemaker for sequestration of plant glucosides in leaf beetles. *eLife*, 2013(2), 1–16. <https://doi.org/10.7554/eLife.01096>
- Tan, W.-H., Tao, L., Hoang, K. M., Hunter, M. D., & de Roode, J. C. (2018). The effects of milkweed induced defense on parasite resistance in monarch butterflies, *Danaus plexippus*. *Journal of Chemical Ecology*, 44(11), 1040–1044. <https://doi.org/10.1007/s10886-018-1007-4>
- Tao, L., Ahmad, A., de Roode, J. C., & Hunter, M. D. (2016). Arbuscular mycorrhizal fungi affect plant tolerance and chemical defences to herbivory through different mechanisms. *Journal of Ecology*, 104(2), 561–571. <https://doi.org/10.1111/1365-2745.12535>
- Tao, L., Gowler, C. D., Ahmad, A., Hunter, M. D., & de Roode, J. C. (2015). Disease ecology across soil boundaries: Effects of below-ground fungi on above-ground host–parasite interactions. *Proceedings of the Royal Society B: Biological Sciences*, 282(1817), 20151993. <https://doi.org/10.1098/rspb.2015.1993>
- Tao, L., Hoang, K. M., Hunter, M. D., & de Roode, J. C. (2016). Fitness costs of animal medication: Antiparasitic plant chemicals reduce fitness of monarch butterfly hosts. *The Journal of Animal Ecology*, 85(5), 1246–1254. <https://doi.org/10.1111/1365-2656.12558>
- Theodoratus, D. H., & Bowers, M. D. (1999). Effects of sequestered iridoid glycosides on prey choice of the prairie wolf spider, *Lycosa carolinensis*. *Journal of Chemical Ecology*, 25(2), 283–295. <https://doi.org/10.1023/A:1020894729188>
- Törönen, P., Medlar, A., & Holm, L. (2018). PANNZER2: A rapid functional annotation web server. *Nucleic Acids Research*, 46(W1), W84–W88. <https://doi.org/10.1093/nar/gky350>
- Uésugi, K. (2010). The adaptive significance of Batesian mimicry in the swallowtail butterfly, *Papilio polytes* (Insecta, Papilionidae): Associative learning in a predator. *Ethology*, 102(5), 762–775. <https://doi.org/10.1111/j.1439-0310.1996.tb01165.x>
- Vlachou, D., Schlegelmilch, T., Christophides, G. K., & Kafatos, F. C. (2005). Functional genomic analysis of midgut epithelial responses in *Anopheles* during *Plasmodium* invasion. *Current Biology*, 15(13), 1185–1195. <https://doi.org/10.1016/j.cub.2005.06.044>
- Vogel, H., Musser, R. O., & de la Paz Celorio-Mancera, M. (2014). Transcriptome responses in herbivorous insects towards host plant and toxin feeding. In C. Voelckel & G. Jander (Eds.), *Annual plant reviews: Insect-plant interactions* (Vol. 47, pp. 197–233). West Sussex, UK: John Wiley & Sons, Ltd.
- Volz, J., Müller, H. M., Zdanowicz, A., Kafatos, F. C., & Osta, M. A. (2006). A genetic module regulates the melanization response of *Anopheles* to *Plasmodium*. *Cellular Microbiology*, 8(9), 1392–1405. <https://doi.org/10.1111/j.1462-5822.2006.00718.x>
- Warnes, G. R., Bolker, B., Bonebakker, L., Gentleman, R., Huber, W., Liaw, A., & Venables, B. (2016). *gplots: Various R programming tools for plotting data*. Retrieved from <https://cran.r-project.org/package=gplots>

- Wen, Z., Pan, L., Berenbaum, M. R., & Schuler, M. A. (2003). Metabolism of linear and angular furanocoumarins by *Papilio polyxenes* CYP6B1 co-expressed with NADPH cytochrome P450 reductase. *Insect Biochemistry and Molecular Biology*, 33, 937–947. [https://doi.org/10.1016/S0965-1748\(03\)00100-0](https://doi.org/10.1016/S0965-1748(03)00100-0)
- Werck-Reichhart, D., & Feyereisen, R. (2000). Cytochromes P450: A success story. *Genome Biology*, 1(6), reviews 3003.1–3003.9. <https://doi.org/10.1186/gb-2000-1-6-reviews3003>
- Yu, G., Wang, L.-G., Han, Y., & He, Q.-Y. (2012). ClusterProfiler: An R package for comparing biological themes among gene clusters. *OMICS: A Journal of Integrative Biology*, 16(5), 284–287. <https://doi.org/10.1089/omi.2011.0118>
- Yu, Q.-Y., Fang, S.-M., Zhang, Z., & Jiggins, C. D. (2016). The transcriptome response of *Heliconius melpomene* larvae to a novel host plant. *Molecular Ecology*, 25(19), 4850–4865. <https://doi.org/10.1111/mec.13826>
- Zalucki, M. P., & Brower, L. P. (1992). Survival of first instar larvae of *Danaus plexippus* (Lepidoptera: Danainae) in relation to cardiac glycoside and latex content of *Asclepias humistrata* (Asclepiadaceae). *Chemoecology*, 3(2), 81–93. <https://doi.org/10.1007/BF01245886>
- Zalucki, M. P., Brower, L. P., & Alonso-M, A. (2001). Detrimental effects of latex and cardiac glycosides on survival and growth of first-instar monarch butterfly larvae *Danaus plexippus* feeding on the sandhill milkweed *Asclepias humistrata*. *Ecological Entomology*, 26(2), 212–224. <https://doi.org/10.1046/j.1365-2311.2001.00313.x>
- Zalucki, M. P., Brower, L. P., & Malcolm, S. B. (1990). Oviposition by *Danaus plexippus* in relation to cardenolide content of three *Asclepias* species in the southeastern U.S.A. *Ecological Entomology*, 15, 231–240. <https://doi.org/10.1111/j.1365-2311.1990.tb00804.x>
- Zhan, S., Merlin, C., Boore, J. L., & Reppert, S. M. (2011). The monarch butterfly genome yields insights into long-distance migration. *Cell*, 147(5), 1171–1185. <https://doi.org/10.1016/j.cell.2011.09.052>
- Zhan, S., & Reppert, S. M. (2013). MonarchBase: The monarch butterfly genome database. *Nucleic Acids Research*, 41(D1), 758–763. <https://doi.org/10.1093/nar/gks1057>
- Zhang, G., Niu, G., Franca, C. M., Dong, Y., Wang, X., Butler, N. S., ... Li, J. (2015). *Anopheles* midgut FREP1 mediates *Plasmodium* invasion. *Journal of Biological Chemistry*, 290(27), 16490–16501. <https://doi.org/10.1074/jbc.M114.623165>
- Zhen, Y., Aardema, M. L., Medina, E. M., Schumer, M., & Andolfatto, P. (2012). Parallel molecular evolution in an herbivore community. *Science*, 337(6102), 1634–1637. <https://doi.org/10.1126/science.1226630>
- Zhong, H., Li, F., Chen, J., Zhang, J., & Li, F. (2017). Comparative transcriptome analysis reveals host-associated differentiation in *Chilo suppressalis* (Lepidoptera: Crambidae). *Scientific Reports*, 7(1), 1–11. <https://doi.org/10.1038/s41598-017-14137-x>

SUPPORTING INFORMATION

Additional supporting information may be found online in the Supporting Information section at the end of the article.

How to cite this article: Tan W-H, Acevedo T, Harris EV, et al. Transcriptomics of monarch butterflies (*Danaus plexippus*) reveals that toxic host plants alter expression of detoxification genes and down-regulate a small number of immune genes. *Mol Ecol*. 2019;28:4845–4863. <https://doi.org/10.1111/mec.15219>