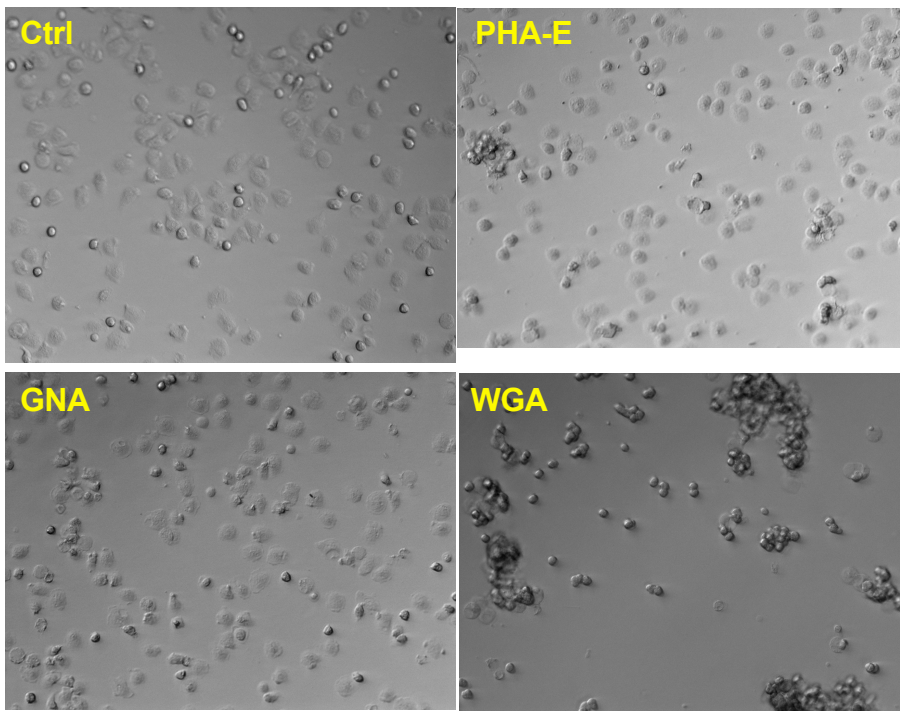
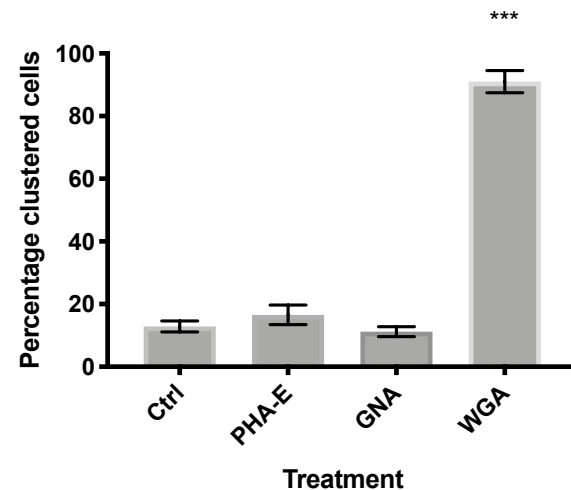


A**B**

Supplemental Figure 2. Targeting of CD11b glycans does not induce PMN aggregation. A) Human PMN were treated with 10 μ g/ml PHA-E, GNA or WGA before assessment of aggregation by light microscopy. B) Quantitation of aggregation (clusters containing more than 5 cells). Data are SEM % aggregated cells, n=3 donors (3 fields counted per donor).