

# KEEP Final Report Appendix B: Land Cover

## 1800 Land Cover

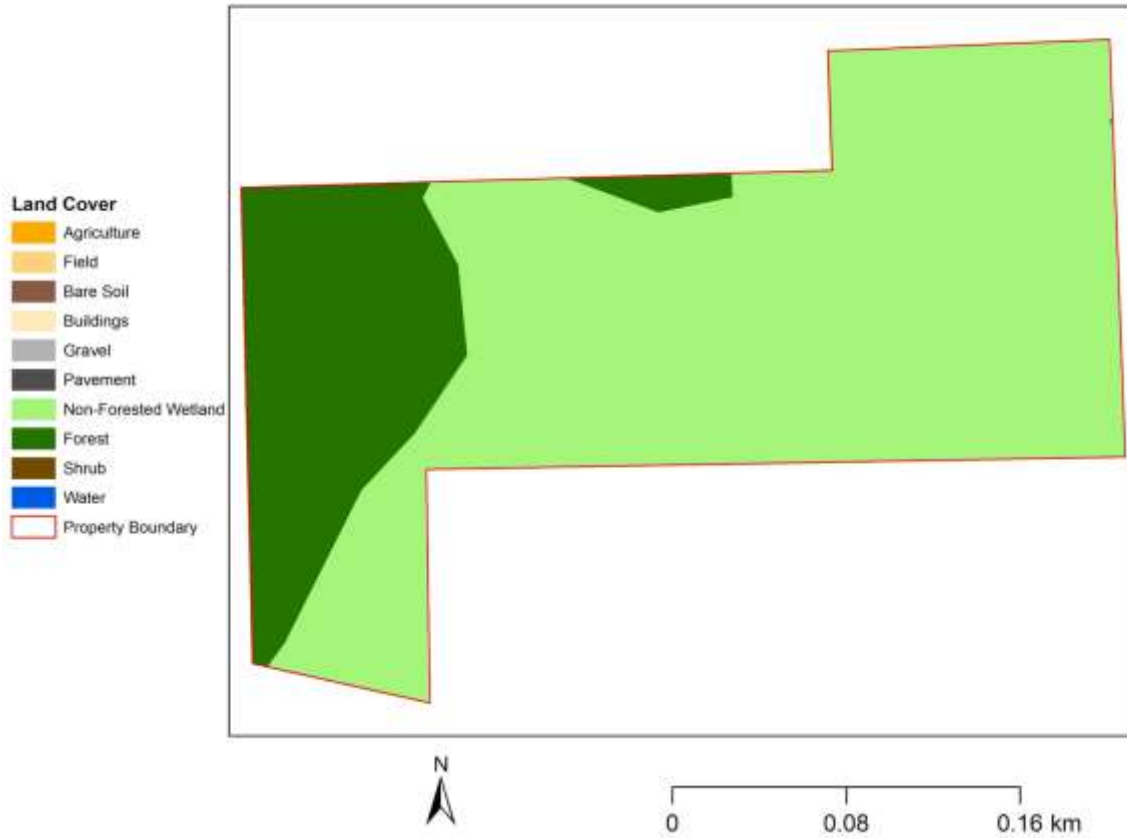
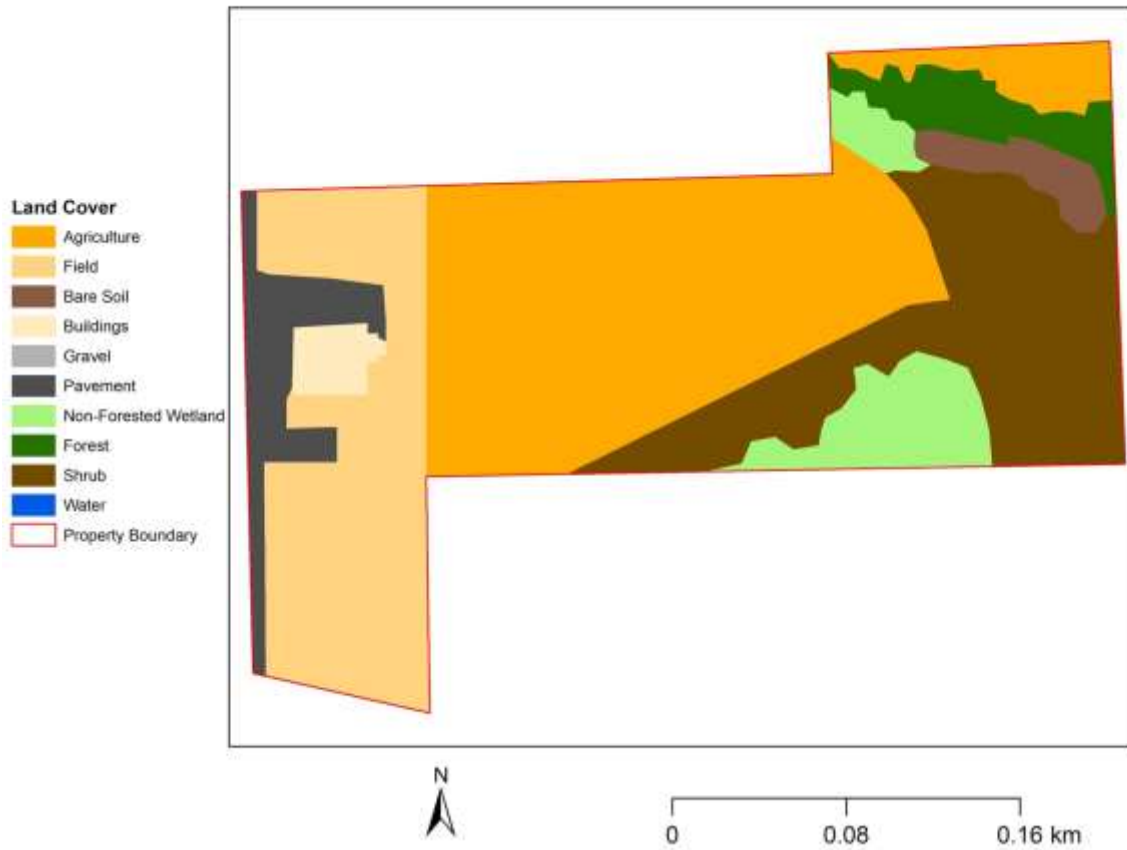


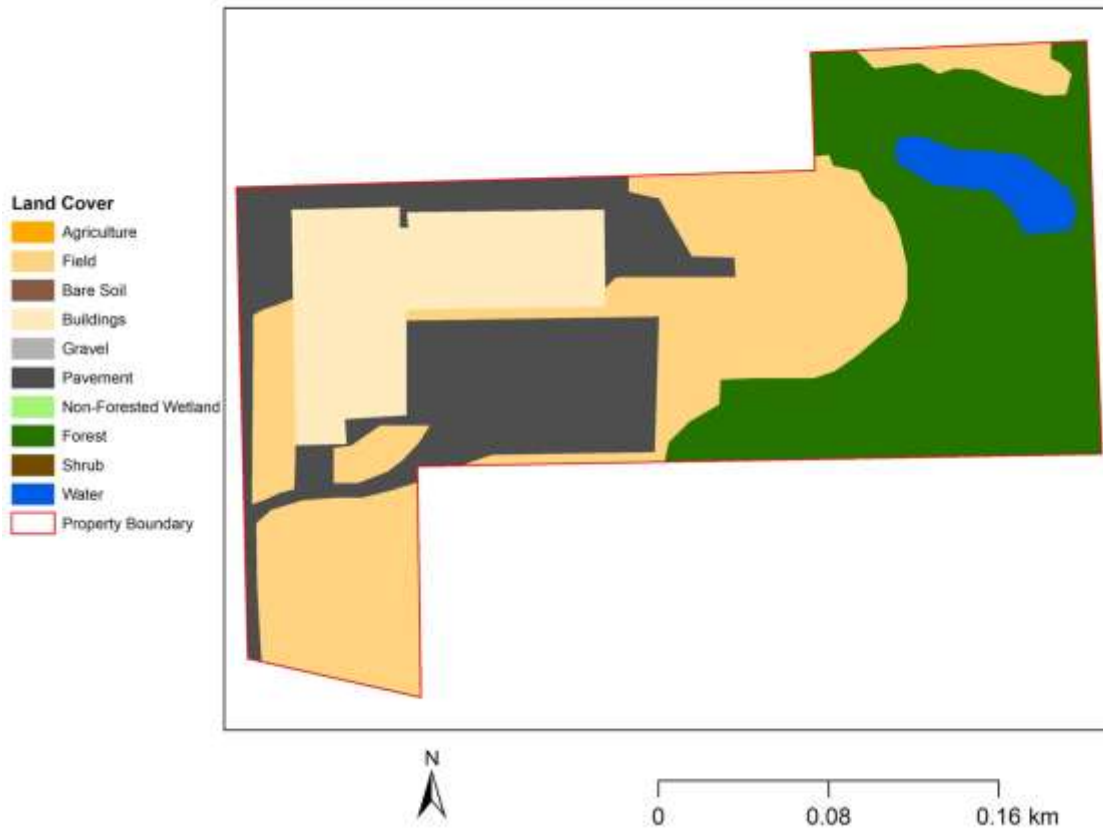
Figure B1. 1800 land cover of the KEEP (State of Michigan, 2019). The land covers are displayed within the KEEP property boundary (Washtenaw County GIS Program, 2019). The map is projected in State Plane Michigan South (m) with North American Datum 1983.

# 1960 Land Cover



*Figure B2. 1960 land cover of the KEEP (Washtenaw County GIS Program, 1960). The land covers are displayed within the KEEP property boundary (Washtenaw County GIS Program, 2019). The map is projected in State Plane Michigan South (m) with North American Datum 1983.*

# 1984 Land Cover



*Figure B3. 1984 land cover of the KEEP (Washtenaw County GIS Program, 1984). The land covers are displayed within the KEEP property boundary (Washtenaw County GIS Program, 2019). The map is projected in State Plane Michigan South (m) with North American Datum 1983.*

# 1990 Land Cover

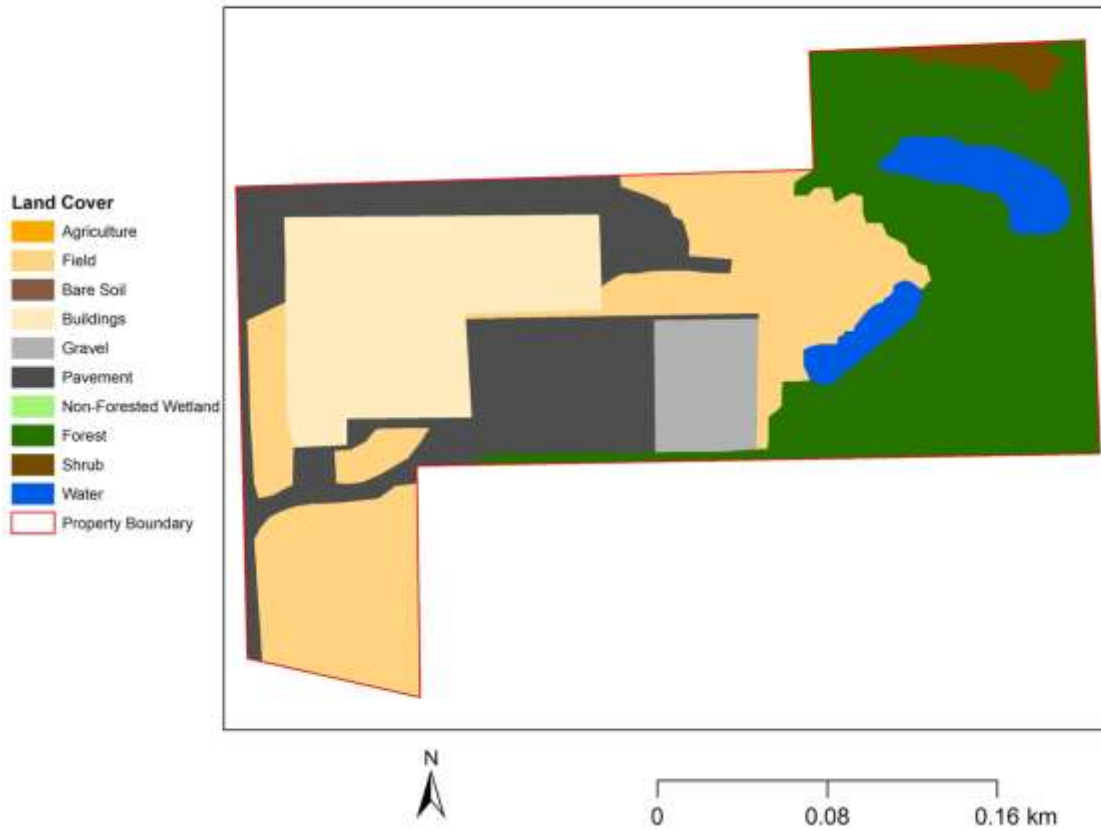


Figure B4. 1990 land cover of the KEEP (Washtenaw County GIS Program, 1990). The land covers are displayed within the KEEP property boundary (Washtenaw County GIS Program, 2019). The map is projected in State Plane Michigan South (m) with North American Datum 1983.

## 2005 Land Cover

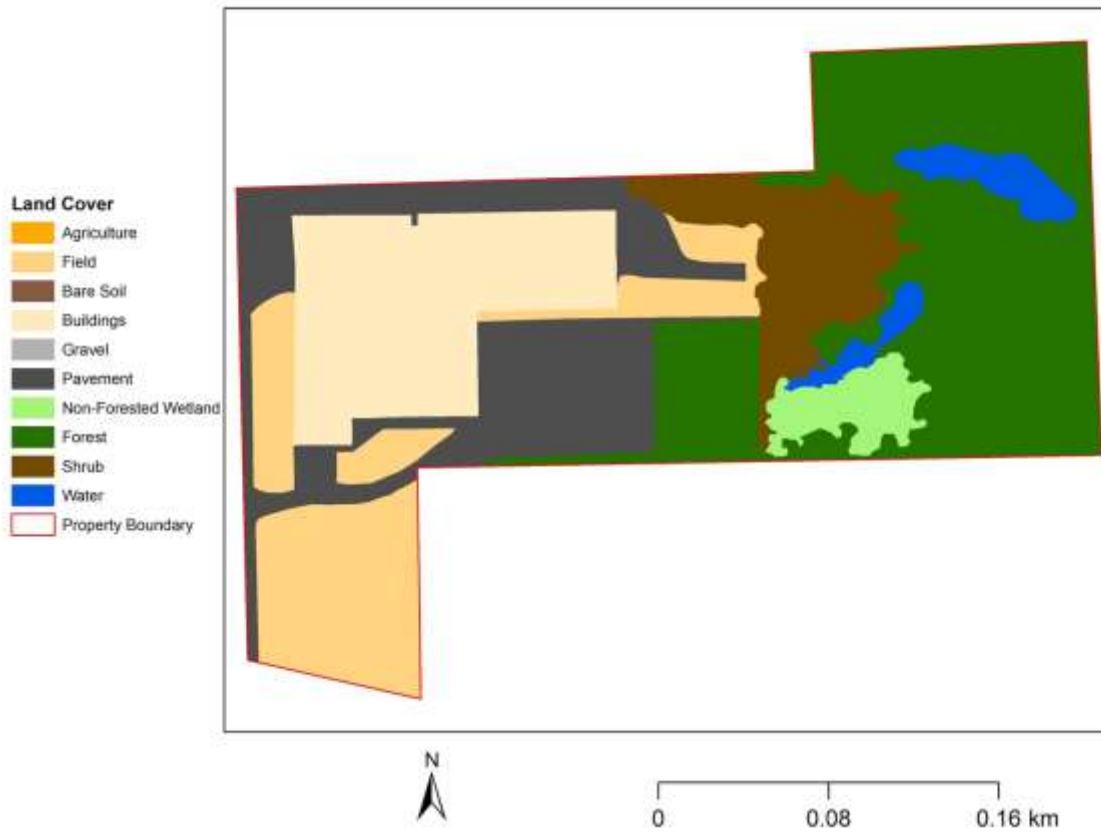


Figure B5. 2005 land cover of the KEEP (SEMOG 2005). The land covers are displayed within the KEEP property boundary (Washtenaw County GIS Program, 2019). The map is projected in State Plane Michigan South (m) with North American Datum 1983.

## 2015 Land Cover

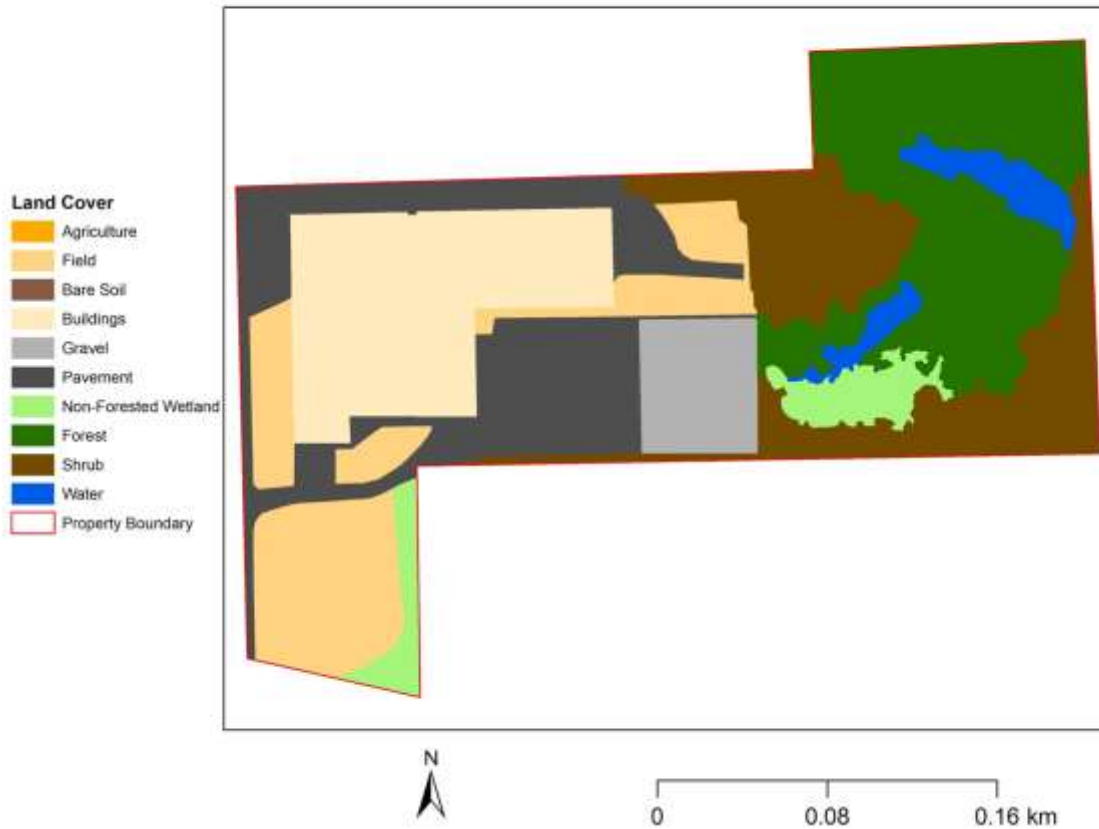


Figure B6. 2015 land cover of the KEEP (SEMCOG, 2015). The land covers are displayed within the KEEP property boundary (Washtenaw County GIS Program, 2019). The map is projected in State Plane Michigan South (m) with North American Datum 1983.

Table B1. 1960 to 1984 land cover change summary. The change type with definition in parentheses as well as the percentage area of the KEEP for each change type are listed.

<i>1960 to 1984</i>	
<i>Change Category</i>	<i>Percentage</i>
<i>No Change</i>	<i>18.96</i>
<i>Clear Cut (Non-forested Wetland, Shrub, or Forest to field)</i>	<i>3.13</i>
<i>Clear Cut and Infrastructure Addition (Non-forested Wetland, Shrub, or Forest to Building, Pavement, or Gravel)</i>	<i>0.63</i>
<i>Infrastructure Addition (to Building,</i>	<i>30.53</i>

<i>Pavement, or Gravel)</i>	
<b>Infrastructure Loss</b> (from Pavement or Gravel to Shrub, Forest, or Field)	1.66
<b>Obstructing Drainage</b> (from Any Cover to Water or Non-Forested Wetland)	2.62
<b>Abandoned Agriculture</b> (from Agriculture to Field)	17.07
<b>Wetland Succession</b> (Non-forested Wetland to Shrub or Forest)	6.71
<b>Forest Succession</b> (Shrub to Forest)	15.56
<b>Succession from Agriculture</b> (from Agriculture to Non-forested Wetland, Shrub, or Forest)	2.33

Table B2. 1984 to 1990 land cover change summary. The change type with definition in parentheses as well as the percentage area of the KEEP for each change type are listed.

<i>1984 to 1990</i>	
<i>Change Category</i>	<i>Percentage</i>
<b>No Change</b>	88.05
<b>Clear Cut</b> (Non-forested Wetland, Shrub, or Forest to field)	0.34
<b>Clear Cut and Infrastructure Addition</b> (Non-forested Wetland, Shrub, or Forest to Building, Pavement, or Gravel)	1.37
<b>Infrastructure Addition</b> (to Building, Pavement, or Gravel)	5.35
<b>Obstructing Drainage</b> (from Any Cover to Water or Non-Forested Wetland)	1.51
<b>Succession from Disturbance</b> (from Field to Shrub, or Forest)	3.33
<b>Forest to Shrub</b>	0.02

<b>Errors (Building to Any Cover)</b>	0.02
---------------------------------------	------

Table B3. 1990 to 2005 land cover change summary. The change type with definition in parentheses as well as the percentage area of the KEEP for each change type are listed.

<i>1990 to 2005</i>	
<i>Change Category</i>	<i>Percentage</i>
<b>No Change</b>	82.76
<b>Infrastructure Addition</b> (to Building, Pavement, or Gravel)	1.41
<b>Infrastructure Loss</b> (from Pavement or Gravel to Shrub, Forest, or Field)	0.34
<b>Obstructing Drainage</b> (from Any Cover to Water or Non-Forested Wetland)	3.22
<b>Creating Drainage</b> (from Water to Any Cover)	1.15
<b>Forest Succession</b> (Shrub to Forest)	1.33
<b>Succession from Disturbance</b> (from Field to Non-forested Wetland, Shrub, or Forest)	8.63
<b>Forest to Shrub</b>	0.69
<b>Errors (Building to Any Cover)</b>	0.47

Table B4. 2005 to 2015 land cover change summary. The change type with definition in parentheses as well as the percentage area of the KEEP for each change type are listed.

<i>2005 to 2015</i>	
<i>Change Category</i>	<i>Percentage</i>
<b>No Change</b>	82.43
<b>Clear Cut</b> (Non-forested Wetland, Shrub, or Forest to field)	0.49
<b>Clear Cut and Infrastructure Addition</b> (Non-forested Wetland, Shrub, or Forest to Building, Pavement, or Gravel)	0.20



<b><i>Infrastructure Addition</i></b> (to Building, Pavement, or Gravel)	0.63
<b><i>Infrastructure Loss</i></b> (from Pavement or Gravel to Shrub, Forest, or Field)	0.51
<b><i>Obstructing Drainage</i></b> (from Any Cover to Water or Non-Forested Wetland)	2.89
<b><i>Creating Drainage</i></b> (from Water to Any Cover)	0.63
<b><i>Wetland Succession</i></b> (Non-forested Wetland to Shrub or Forest)	1.02
<b><i>Forest Succession</i></b> (Shrub to Forest)	1.35
<b><i>Succession from Disturbance</i></b> (from Field to Non-forested Wetland, Shrub, or Forest)	0.22
<b><i>Forest to Shrub</i></b>	8.91
<b><i>Paved</i></b> (from Gravel to Pavement)	0.58
<b><i>Errors</i></b> (Building to Any Cover)	0.20