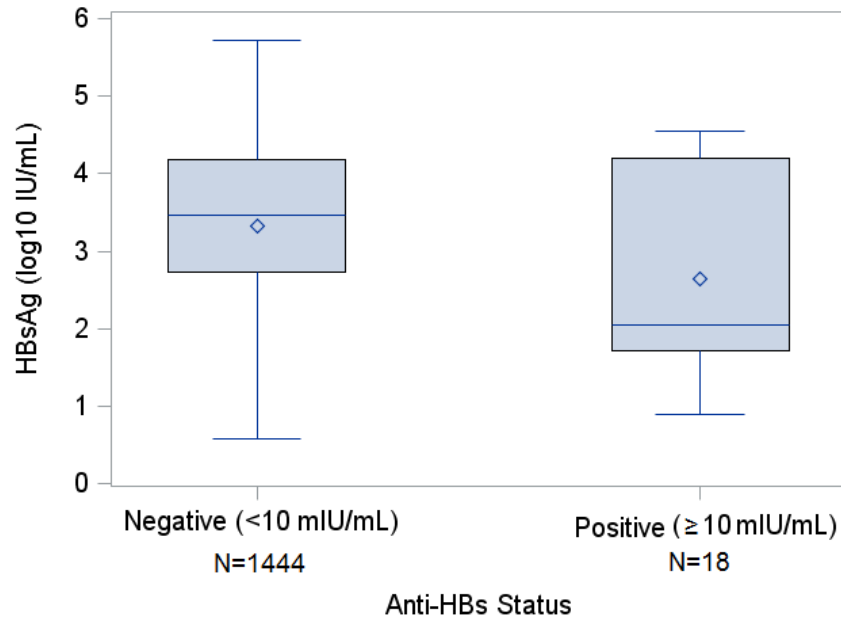
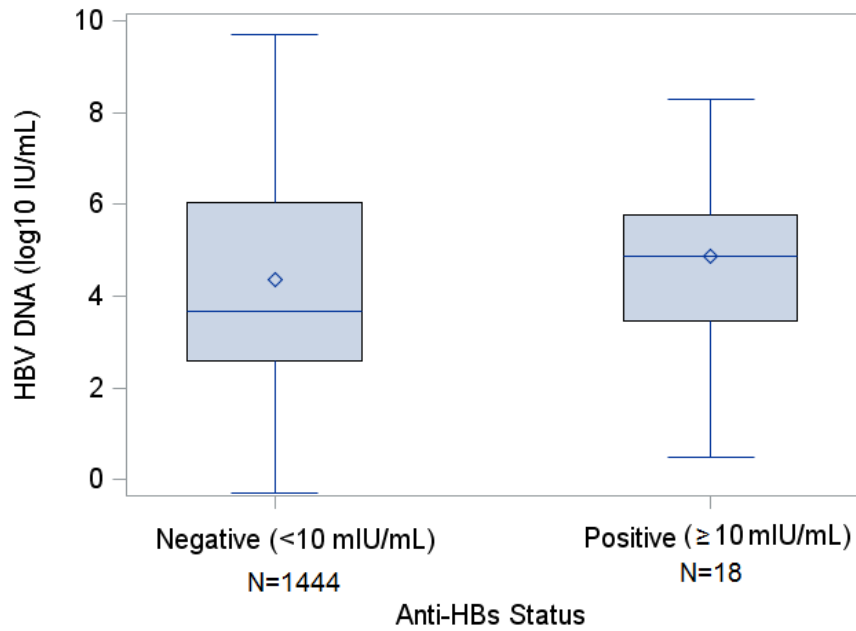


Supplementary Figure 1. Box plot showing HBsAg level (A), HBV DNA level (B) and ALT (C) among children and adults with chronic HBV infection by anti-HBs status

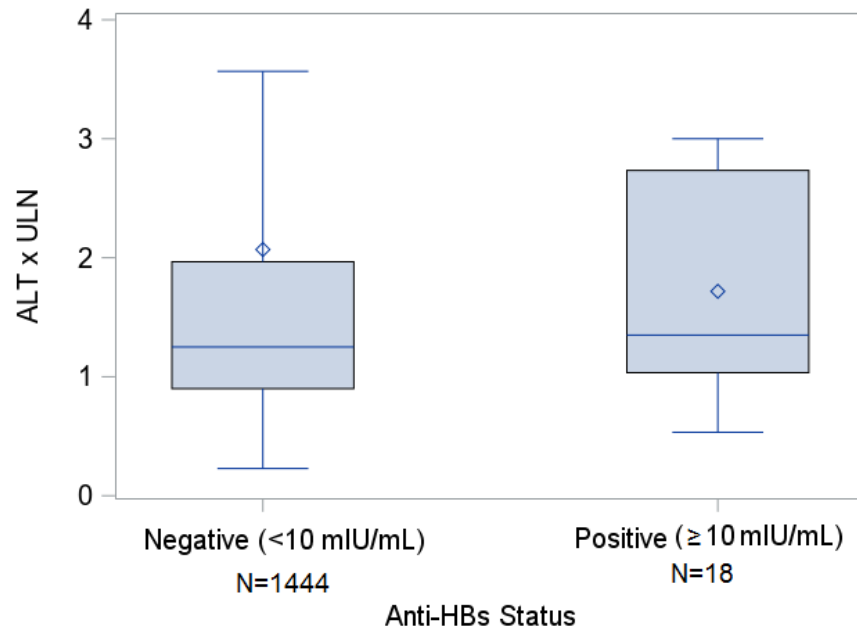
A. HBsAg



B. HBV DNA



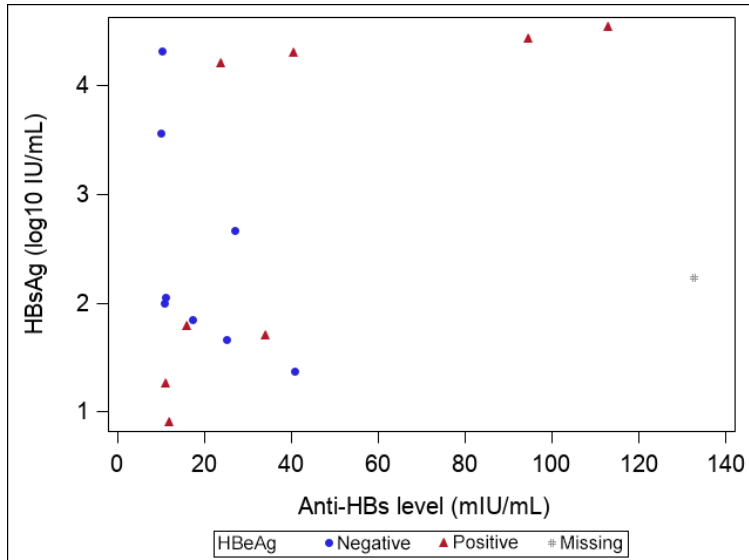
C. ALT x ULN



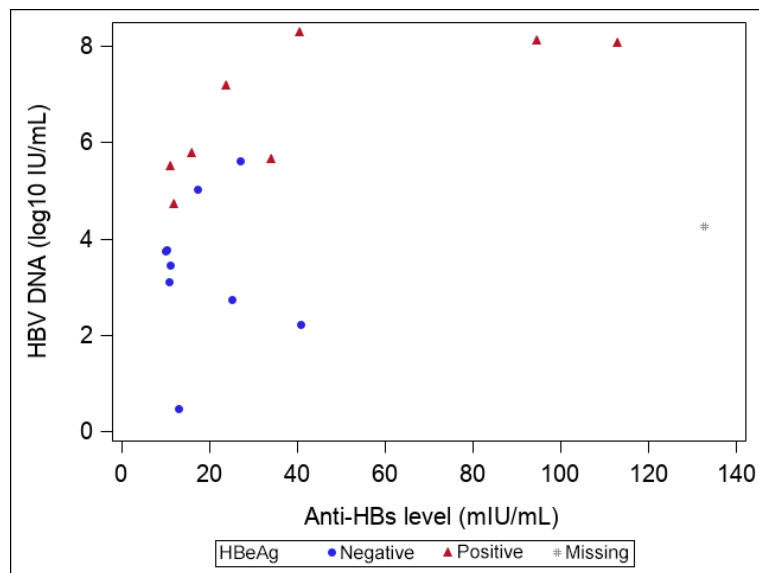
Abbreviations: ALT, Alanine aminotransferase; DNA, deoxyribonucleic acid; HBsAg, hepatitis B surface antigen; anti-HBs, hepatitis B surface antibody

Supplementary Figure 2. Scatter plots of anti-HBs level by HBsAg level (A) and HBV DNA level (B) at baseline in children and adults with chronic HBV with concurrent HBsAg and anti-HBs. HBeAg status indicated.

A. HBsAg (n=17)



B. HBV DNA (n=18)



Abbreviations: HBsAg, hepatitis B surface antigen; anti-HBs, hepatitis B surface antibody

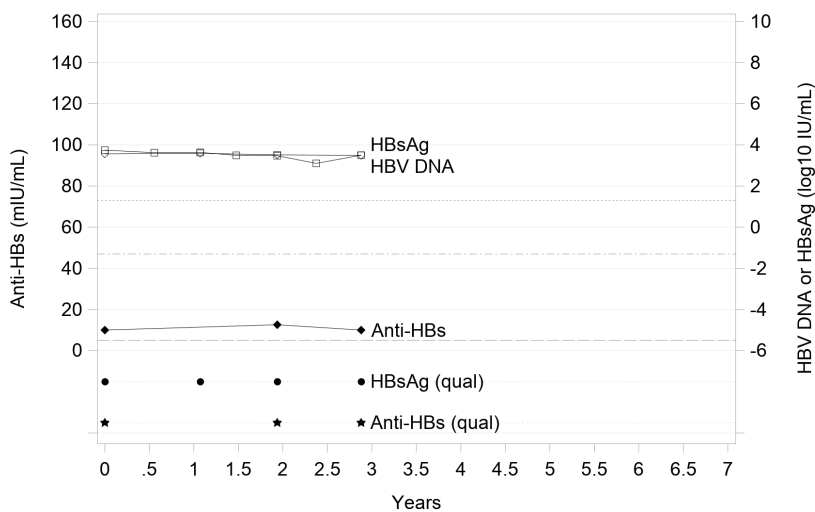
There were significant positive correlations between anti-HBs levels and HBsAg and DNA ($r=0.73$, $p=0.04$; $r=0.74$, $p=0.03$, respectively), among HBeAg positive participants only.

Supplementary Figure 3. Anti-HBs, HBsAg, HBV DNA and levels over time in participants with chronic HBV infection and concurrent anti-HBs and HBsAg at baseline. None of the participants were receiving HBV treatment (Rx) at baseline. For participants who initiated treatment during follow-up, the start and stop of treatment is indicated.

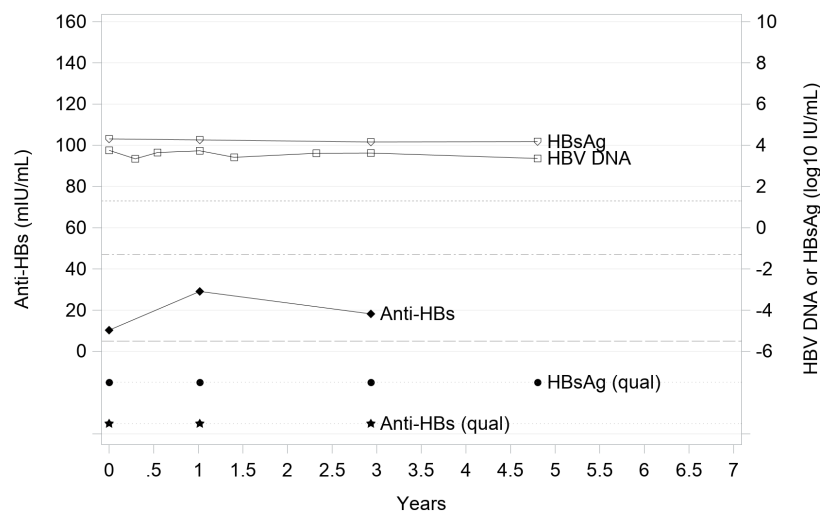
Figure Legend

- ◆ Anti-HBs (mIU/mL) ◊ HBsAg (log10 IU/mL) ◻ HBV DNA (log10 IU/mL) ★ Anti-HBs (+) ● HBsAg (+)
- Anti-HBs <LLOD - - - HBsAg <LLOD HBV DNA <LLOD ☆ Anti-HBs (-) ○ HBsAg (-)

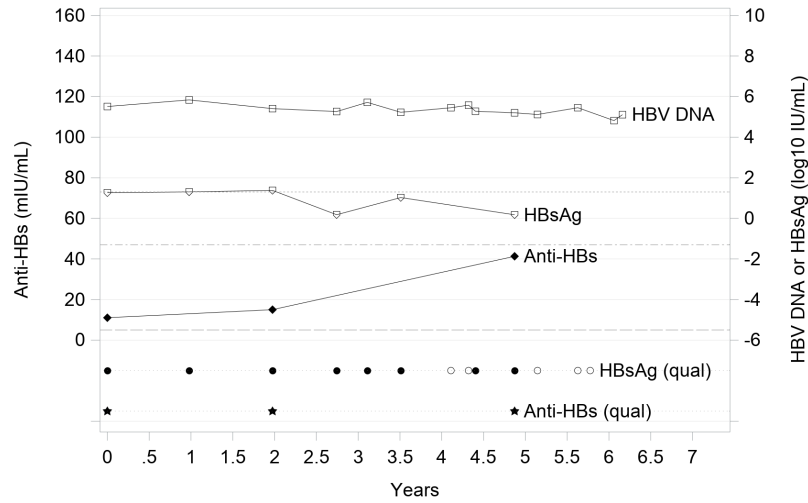
A. Case 1



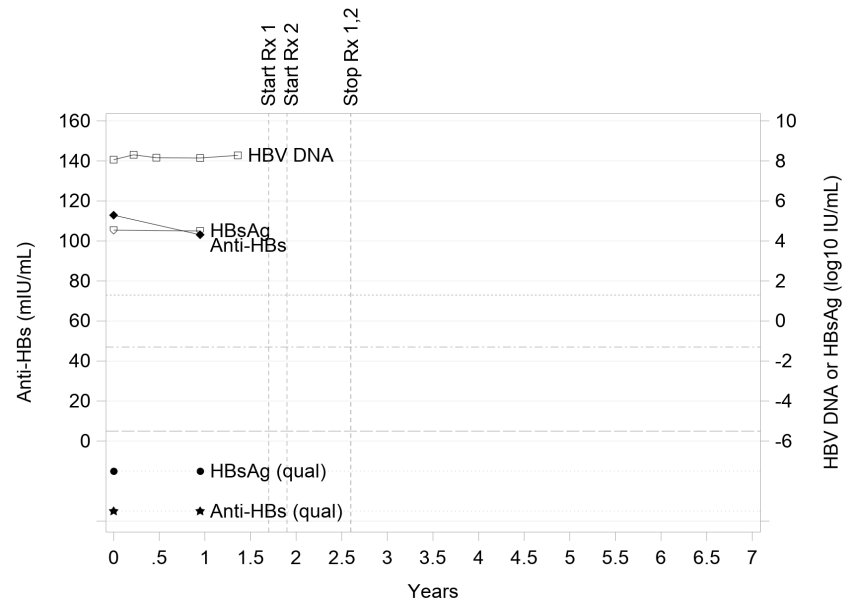
B. Case 2



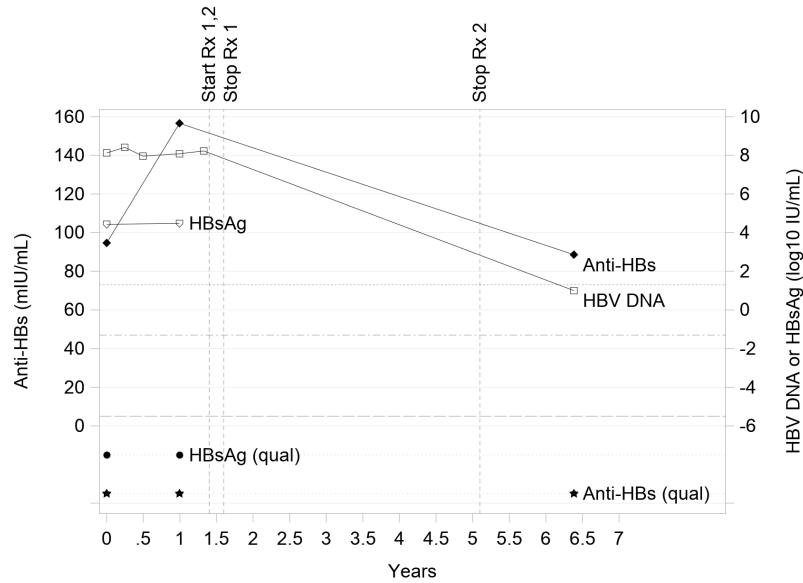
C. Case 3



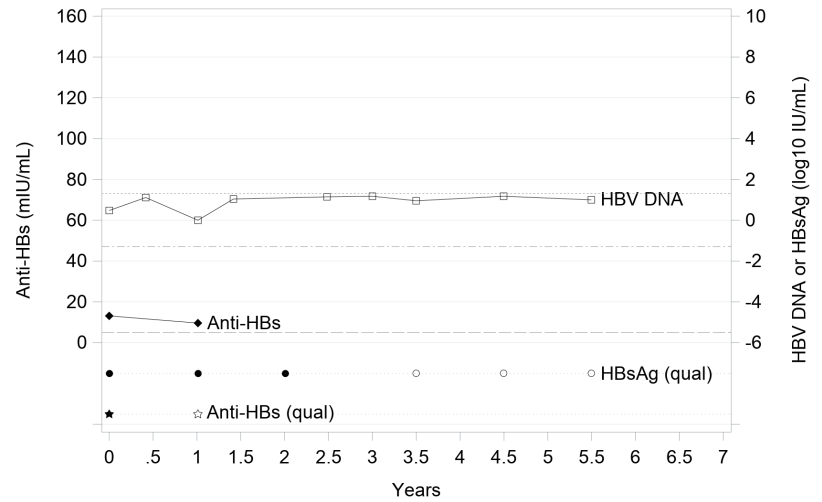
D. Case 4



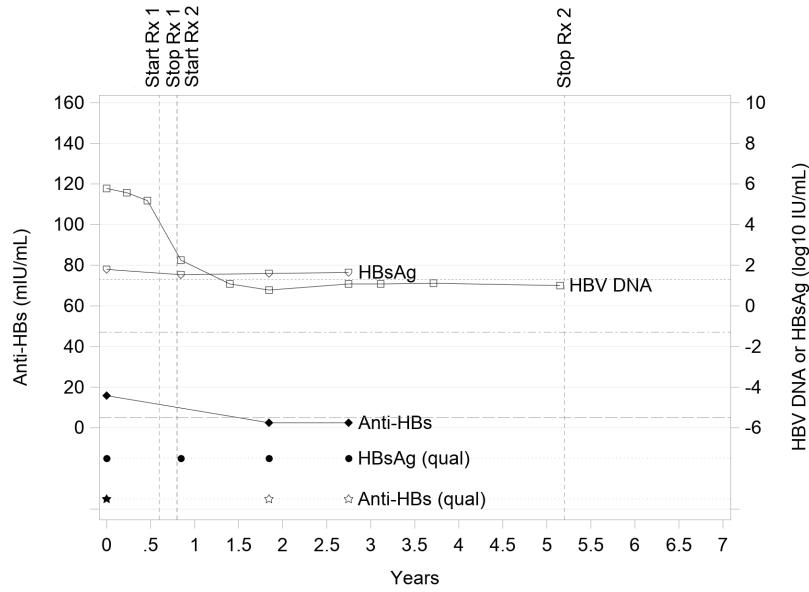
E. Case 5



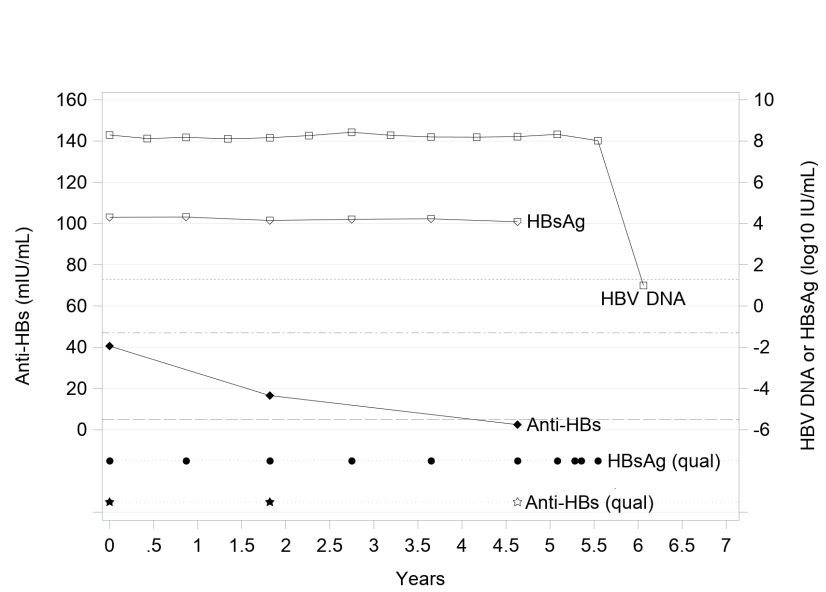
F. Case 6



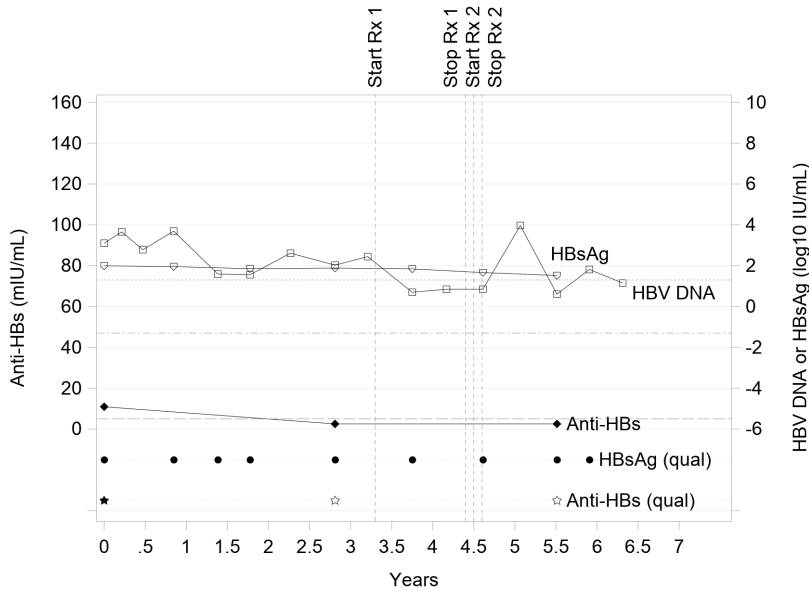
G. Case 7



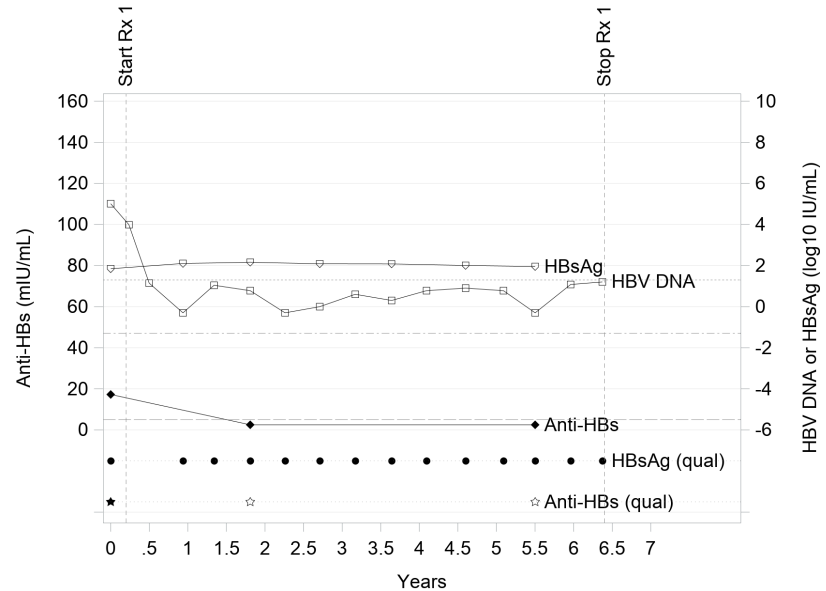
H. Case 8



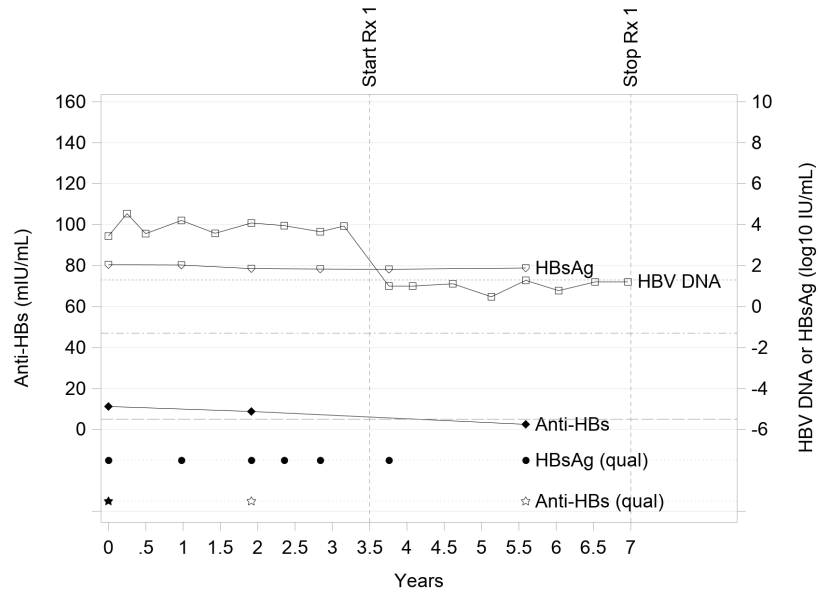
I. Case 9



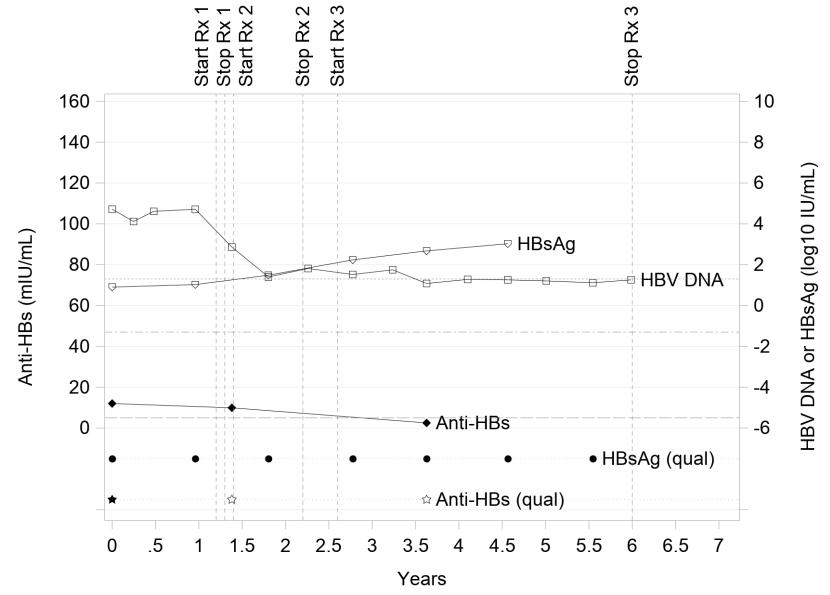
J. Case 10



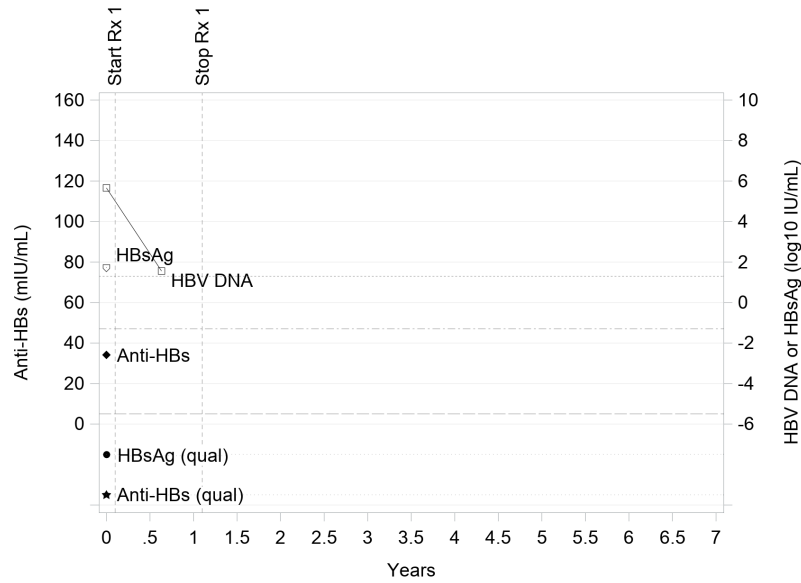
K. Case 11



L. Case 12



M. Case 13



N. Case 14

