

ORIGINAL ARTICLE

Treatment effect of guided tissue regeneration on the horizontal and vertical components of furcation defects: A retrospective study

Jad Majzoub | Shayan Barootchi | Lorenzo Tavelli | Chin-Wei Wang |
Sunčica Travan | Hom-Lay Wang

Department of Periodontics & Oral Medicine,
University of Michigan School of Dentistry,
Ann Arbor, MI

Correspondence

Hom-Lay Wang, Department of Periodontics
and Oral Medicine, University of Michigan
School of Dentistry, 1011 North University
Avenue, Ann Arbor, MI 48109-1078, USA.
Email: homlay@umich.edu

Abstract

Background: Identifying factors affecting the treatment outcomes of guided tissue regeneration (GTR) in furcation defects is imperative in order to obtain predictable regeneration outcomes. The aims of this study were to evaluate the clinical outcomes and survival of furcation-involved teeth treated with GTR, and potential factors affecting the results.

Methods: Furcation defects treated with GTR using an allogeneic cancellous bone graft and covered by an absorbable membrane with at least 1-year follow-up were selected. All data relative to the clinical outcomes were recorded. Analyses were conducted to evaluate the immediate (1-year post-op) clinical outcomes and the long-term (the last assessment time) survival of the treated teeth. The effect of variables on the 1-year post-op clinical attachment level (CAL) changes and the tooth survival were assessed via multi-level regression analyses and Cox Proportional-Hazards Models.

Results: Ninety-eight treated defects were selected. The average follow-up was 5.3 ± 4.3 years. At the 1-year post-surgical recall, 1.23 ± 1.48 mm CAL gain was observed ($P < 0.05$). The 5- and 10-year survival rates of the treated teeth were 86.5% and 74.3%, respectively. The vertical component of the defect and the location of the furcation were significantly related to the post-surgical 1-year CAL gain, whereas membrane exposure significantly affected tooth survival.

Conclusion: Within the limitations of this study, data suggests GTR using allogeneic cancellous bone graft and absorbable collagen membrane to be a viable option for treating furcation-involved teeth if the defect morphology and the location of the defect are favorable.

KEYWORDS

furcation defect, guided tissue regeneration, periodontitis, smoking, survival analysis

1 | INTRODUCTION

Furcation involvement (FI) has been classified as one of the most important factors determining the complexity of

periodontitis.¹ This can develop once the periodontal disease reaches the root separation area of a multirooted tooth.² If left untreated, the disease will disseminate in a horizontal pattern towards the interior part of the furcation,³ as well as in



a vertical pattern towards the apices of the roots,⁴ rendering the maintenance of the teeth more challenging because of the unique anatomy of the area, that allows only limited access for cleaning.⁵

Several long-term studies have shown that there is a high risk of tooth loss when a furcation involved tooth is left untreated,⁶ or even when periodontal maintenance is performed.⁷ In particular, Nibali et al. found that the presence of FI increases the risk of tooth loss for molars undergoing periodontal maintenance by two folds (in a 15-year period).⁸

Several strategies have been proposed for the treatment of FI in teeth, including osseous resection, root amputation, tunneling, and regeneration^{9–12} to name a few. Among the regenerative procedures, guided tissue regeneration (GTR) using absorbable barrier membranes has shown improvements in CAL gain and probing depth (PD) reduction.^{13–16} Further, with the addition of bone graft more predictable outcomes have been demonstrated.^{13,17–20}

Studies looking at the predictability and prevalence of complications following GTR treatment in furcation defects are limited.^{21–24} Although factors affecting the success of GTR in furcation defects have been examined previously,^{25,26} in-depth assessment of factors that may influence and predict the long-term treatment outcomes are still lacking.^{17,27–31}

Further, most studies have evaluated the effect of regeneration in furcations only on the horizontal component and not on the vertical aspect of the furcation defect.^{23,29,32,33} The vertical component of furcation defect has been linked to the long-term survival of furcation-involved teeth.^{7,34}

Therefore, the aims of this study were to evaluate the clinical outcomes and survival of furcation-involved teeth treated with GTR, and to evaluate potential factors affecting the results. Specifically, the following study aims were examined: (1) the immediate short-term (1-year) clinical outcomes, (2) the long-term survival of the treated teeth, (3) the factors influencing both the immediate treatment outcomes, and the long-term survival of the treated dentition, and (4) the impact of GTR on the horizontal as well as the vertical components of the furcation defect.

2 | MATERIALS AND METHODS

2.1 | Study design

The current investigation was designed according to the principles presented in the Helsinki Declaration of 1975, as revised in 2000 for biomedical research involving human patients. The study was approved by the Institutional Review Board for Human Studies, School of Dentistry, University of Michigan, Ann Arbor, MI, (HUM00154408) to be conducted at the Department of Periodontology within the same institution.

This retrospective cohort study selected all patients that had undergone treatment for furcation defects with GTR using an allogeneic cancellous bone graft then covered with an absorbable membrane in the time period between January 1980 and December 2017 at the School of Dentistry, University of Michigan, Ann Arbor, MI. All paper files and digital charts of patients treated with GTR were carefully scanned and analyzed by two independent and pre-calibrated investigators (JM, SB). At every stage, after examining the gathered data, in case of a disagreement, discussion was held by the two reviewers to reach consensus. If resolution was not possible, a third investigator (LT) or a senior author (HLW) was consulted and his decision was decisive. As no patients were treated as a direct result of this research, the study required no additional informed consent for the included patients. Further, all patient data and charts were anonymized because the data were retrieved without any identifiable information.

2.2 | Inclusion criteria

1. A patient who had previously received GTR therapy for at least one furcation defect on either a first or second molar.
2. Before the GTR procedure, all individuals must have previously received a comprehensive periodontal treatment (including oral hygiene instructions, scaling/root planing, prophylaxis, etc.).
3. GTR procedures must have included use of an allogeneic cancellous bone graft then covered with an absorbable membrane
4. Patient records must have had at least 1-year of follow-up following the GTR procedure.
5. Patients charts should have contained complete clinical data including radiographs at baseline (pre-surgical stage) and at 1 year after the surgical procedure.

2.3 | Exclusion criteria

1. Patients without a post-surgical follow-up data reaching 12 months.
2. The use of barrier membranes for procedures other than GTR (such as sinus lift, guided bone regeneration, socket augmentation, etc.).
3. GTR procedures in non-furcation associated defects (such as pure infrabony defects).
4. The sole use of bone graft without use of a barrier membrane, or the use of a membrane without placement of a bone graft material.
5. Placement of a non-resorbable membrane.

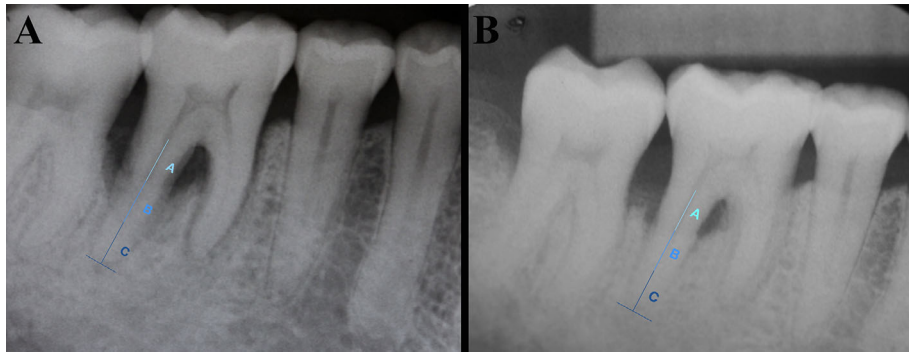


FIGURE 1 Radiographic evaluation of an included furcation defect at (A) baseline, and (B) 1-year post-surgical re-evaluation showing the enhancement of radiographic bone support from the apical (subclass C) third, to the middle (subclass B) third of the root length

6. A medically compromised patients or those taking medications that are known to interfere with the normal healing response process (e.g., bisphosphonates, anti-cancer therapy, etc.).

2.4 | Data collection and classification

The following information were obtained for all qualified patients: (1) patient related factors (such as age, gender, etc.); (2) medical history (including documentation of smoking, diabetes, other systemic or local diseases); (3) location of the treated defect (mandible/maxilla – buccal/lingual, mid-facial/mesio-palatal/disto-palatal); (4) clinical parameters of the furcation defect: PD, gingival recession (REC), clinical attachment level (CAL) and horizontal FI; (5) occurrence of post-surgical complications (such as membrane exposure); (6) follow-up time (until tooth extraction or last maintenance appointment); (7) frequency of maintenance appointments throughout the entire follow-up; and (8) baseline and 1-year post-surgical patient radiographs.

2.5 | Study outcomes

The study outcomes of the present project were three folds:

2.5.1 | Clinical outcomes of GTR

The changes in the clinical parameters (PD, CAL, REC) were compared from baseline (pre-surgical treatment) to the 1-year post-surgical appointment. Additionally, the influence of other recorded variables was assessed on the CAL outcomes obtained 1 year following the GTR procedure.

2.5.2 | Survival

The survival of all treated teeth was assessed according to the Kaplan-Meier analysis. The final follow-up of any treated tooth was the last recorded appointment at the University of Michigan, School of Dentistry. A tooth was considered lost if it was extracted because of periodontal reasons. If a tooth was extracted for any other reason (decayed, fractured, endodon-

tic or prosthodontic reasons), this tooth was excluded from the analysis. Additionally, the effect of the recorded variables on the treated teeth were assessed for their potential effect on tooth retention/survival.

2.5.3 | The effect of GTR on the vertical and horizontal components of furcation defects

The vertical furcation subclassification was determined from peri-apical radiographs that were collected at baseline and 1-year following the surgery according to Tonetti 2017.³⁴ Briefly, the vertical component was calculated based on the amount of bone loss in the furcation defect, subclass A was designated when bone loss reached the coronal third ($\leq 33\%$) of the furcation region, subclass B was when the bone loss reached the middle third (33%-67%) of the furcation region and subclass C was assigned when the bone loss reached the apical third ($\geq 67\%$) of the furcation region.^{4,7,21,34} When multiple root areas of a single tooth were involved, the area with the greatest vertical component was used to determine the subclass of the tooth.³⁴ The values obtained at baseline were then compared to the values obtained from radiographs taken at the 1-year post-op follow-up (Figure 1).

The horizontal subclassification of the furcation was based on assessment with the use of a Naber's probe*, as extracted from clinical records.³ Briefly, this was measured based on a horizontal probe penetration in the furcation region of a multirooted tooth; degree 0 was assigned when there was no probable horizontal FI; degree 1 was assigned when the horizontal loss of periodontal tissue support was < 3 mm; degree 2 was assigned when there was a horizontal loss of support that had exceeded 3 mm but not the total width of the furcation area; and degree 3 was assigned when a horizontal through-and-through destruction of the periodontal tissue in the furcation area had been observed.³ The values obtained at baseline were then compared to the values obtained at the 1-year post-surgical recall.

* Hu-Friedy Mfg. Co. Inc., Chicago, IL, USA



2.6 | Data management and statistical analysis

The collected data were entered into prefabricated spread sheets. Descriptive statistics were used for presenting the retrieved data at baseline as means \pm standard deviations, and range. The treated furcation defects served as the unit of analysis. The changes in clinical parameters from baseline to the 1-year outcome were assessed with dependent *t* tests. Mixed-effects Uni- and Multi-level Regression analyses were performed to identify prognostic factors for CAL gain at the 1-year post-surgical appointment. Kaplan-Meier survival probabilities were calculated, and the curves were subsequently plotted. Multi-variate Cox Proportional Hazard models were used for assessing correlations between independent variables and tooth loss, accounting for the fact that an individual may have attributed to multiple treated furcation defects (shared frailty was accounted for by including random effects). Step-wise regression analyses were performed using likelihood ratio tests, with variables presenting a *P* value of <0.05 in the initial univariate analysis. Exponentiated regression coefficients (Hazard ratios) and corresponding 95% confidence intervals (CI) were produced, and a *P* value threshold of 0.05 was set for the statistical significance. All analyses were performed by an author with experience in biostatistics (SB) using Rstudio^{*}, the survminer,³⁵ survival,³⁶ and ggplot2³⁷ packages.

3 | RESULTS

3.1 | Study population

A total of 83 patients ([45 Males and 38 females], mean age of 52.5 ± 13.8 [16-79] years) with 98 GTR-treated furcation defects were included in this study (see Supplementary Figure S1 in online *Journal of Periodontology*). In all GTR procedures, the combination of an allograft material and a collagen membrane was used. The used bone grafts were all allogeneic cancellous in nature either Freeze-dried bone allograft[†] (in 23 defects), or Solvent-dehydrated bone allograft[‡] (in 75 defects). The used membranes were of two types, both collagenous in nature: one type[§] in 86 defects, and another type[¶] in 12 cases. The mean follow-up for the selected cases was 5.29 ± 4.3 years. The average maintenance visits for the included patients was 2.11 ± 1.08 times per year (range: 1-4). Table 1 presents details on the characteristics of the selected patients.

* Rstudio Version 1.1.383, RStudio, Inc., Boston, Massachusetts, USA

† Salvin Dental Specialties, Charlotte, NC, USA

‡ Puros, Zimmer Biomet, Carlsbad, CA, USA

§ BioMend, Zimmer BioMet, Carlsbad, CA, USA

¶ Bio-Gide, Geistlich Pharma, Wolhusen, Switzerland

TABLE 1 Characteristics of the included patients/defects at baseline

Characteristic	Frequency
Subject level data	
Males (N, %)	45, 54.2%
Age	52.5 ± 13.9
Diabetics (N, %)	4, 4.82%
Smoker (N, %)	17, 44.57%
Stage 3 grade A periodontitis ¹ (N, %)	17, 20.48%
Stage 3 grade B periodontitis ¹ (N, %)	23, 27.71%
Stage 3 grade C periodontitis ¹ (N, %)	27, 32.53%
Stage 4 grade A periodontitis ¹ (N, %)	2, 2.41%
Stage 4 grade B periodontitis ¹ (N, %)	7, 8.43%
Stage 4 grade C periodontitis ¹ (N, %)	7, 8.43%
Tooth level data	
Maxilla (N, %)	41, 41.84%
Mandible (N, %)	57, 58.16%
Endodontically treated (N, %)	12, 12.24%
Clinical attachment level [CAL (mm)]	4.36 ± 1.12 mm
Pocket depth [PD (mm)]	3.14 ± 0.94 mm
Recession [REC (mm)]	1.21 ± 0.76 mm

Data are expressed as mean \pm standard deviation; or N, numbers, percentages.

3.2 | Clinical outcomes of GTR

At baseline, 55.10% of sites presented with BOP, a mean PD of 3.14 ± 0.94 mm, REC of 1.21 ± 0.76 mm, and CAL of 4.36 ± 1.13 mm. At the 1-year post-surgical recall, the BOP dropped to 28.57%, an average of 1.35 ± 1.43 mm PD reduction and 1.23 ± 1.48 mm of CAL gain were observed, changes that were all statistically significant ($P < 0.001$). In addition, an increase of 0.16 ± 1.13 mm in REC was also observed; however, this change lacked statistical significance ($P = 0.18$).

Univariate analyses demonstrated a significant correlation with smoking (-0.77 [95% CI $(-1.5, -0.04)$, $P = 0.03$]), and post-op membrane exposure (-0.98 [95% CI $(-1.88, -0.08)$, $P = 0.03$]), to lower amounts of CAL gain. In addition, when cases with furcation defects of subclass B and C were combined (B + C), a significantly less amount of CAL gain was observed, compared to teeth with subclass A (-1.59 [95% CI $(-2.23, -0.95)$, $P < 0.001$]). Finally, when regeneration attempts were performed in the buccal furcation defects of mandibular molars a higher CAL gain was noted compared to the lingual furcation defects of mandibular molars (-1.20 [95% CI $(-2.11, -0.30)$, $P = 0.01$]), the buccal (-1.51 [95% CI $(-2.5, 0.51)$, $P = 0.003$]), the mesio-palatal (-1.76 [95% CI $(-2.82, -0.70)$, $P = 0.001$]), and the disto-palatal (-1.66 [95% CI $(-3.02, -0.30)$, $P = 0.01$]) furcations of the maxillary molars.

**TABLE 2** Results of the regression models evaluating the effect of different variables on the CALs of the treated defects at the 1-year recall

Variable	Univariate analysis				Multivariate analysis			
	Estimate	Std. Error	95% CI	P-value	Estimate	Std. Error	95% CI	P-value
Sex (male)	0.24	0.38	-0.52, 0.99	0.54				
Age	-0.002	0.01	-0.03, 0.03	0.89				
Smoking	-0.77	0.36	-1.5, -0.04	0.03	-0.18	0.32	-0.83, 3.39	0.58
Diabetes	-0.95	0.88	-2.71, 0.81	0.28				
Membrane exposure	-0.98	0.45	-1.88, -0.08	0.03	-0.28	0.38	-1.05, 0.49	0.46
Endodontic treatment	-0.13	0.57	-1.27, 1.01	0.82				
Initial PD	0.09	0.20	-0.31, 0.49	0.66				
Initial CAL	0.20	0.17	-0.14, 0.53	0.24				
Horizontal component (Hamp 1975) – ref: none								
degree 2	-0.684	0.41	-1.51, 0.14	0.1				
degree 3	-0.184	0.81	-1.81, 1.44	0.82				
Vertical component (Tarnow and Fletcher 1984) – ref: Class A								
vertical B + C	-1.59	0.32	-2.23, -0.95	<0.001	-1.43	0.34	-2.12, -0.76	<0.001
Furcation location (ref: Buccal Lower)								
upper mid-facial	-1.51	0.50	-2.5, -0.51	0.003	-1.55	0.43	-2.41, -0.69	<0.001
disto-palatal	-1.66	0.68	-3.02, -0.30	0.01	-1.40	0.63	-2.65, -0.14	0.02
lower lingual	-1.20	0.45	-2.11, -0.30	0.01	-0.73	0.41	-1.54, 0.08	0.08
mesio-Palatal	-1.76	0.53	-2.82, -0.70	0.001	-1.01	0.48	-1.98, -0.05	0.03

Bold signifies statistical significance.

CI, confidence intervals.

The multivariate analysis including the above mentioned statistically significant variables displayed that, vertical subclassification of B + C compared to A (-1.43 [95% CI (-2.12, -0.76), $P < 0.001$]), as well as GTR in the buccal (-1.55 [95% CI (-2.41, -0.69), $P < 0.001$]), mesio-palatal (-1.01 [95% CI (-1.98, -0.05), $P = 0.03$]), and disto-palatal (-1.40 [95% CI (-2.65, -0.14), $P = 0.02$]) furcations of maxillary molar were significantly associated with lower CAL gain at 1 year when compared to the buccal furcation of the mandibular molar. Lastly, gender, age, diabetes, previous endodontic treatment, initial PD, initial CAL, and the horizontal component of the furcation defect were not found to statistically significant in relation to observed CAL gain at the 1-year recall ($P > 0.05$). Table 2 depicts the results of these regression models in detail.

3.3 | Survival analysis

From baseline until the final gathered follow-up appointment (5.29 ± 4.3 years), 12 teeth in 11 patients were lost. The 5- and 10-year survival rates were 86.5% and 74.3%, respectively. Figure 2 demonstrates the survival curves of the treated molars, with the respective number of followed molars, and the life table analysis presents the number of followed, censored, and extracted teeth at the respective timepoints (see Supplementary Table S1 in online *Journal of Periodontology*).

Univariate analyses showed that the occurrence of membrane exposure significantly affected the survival of the GTR-treated molars (5.14 [95% CI (1.65, 16), $P = 0.005$]). The frequency of maintenance appointment was also significantly and inversely correlated to tooth loss (0.28 [95% CI (0.12, 0.65), $P = 0.003$]). In addition, teeth that presented with higher levels of initial attachment loss displayed lower survival rates (1.81 [95% CI (1.02, 3.22), $P = 0.04$]). When the effect of the horizontal component was evaluated 1 year after the GTR surgery, it was shown that teeth with degrees 2 and 3, presented with lower survival rates compared with teeth that had non-probable FI (12.27 [95% CI (1.47, 102.6), $P = 0.02$]), and (24.15 [95% CI (2.73, 213.3), $P = 0.004$]), respectively. However, teeth with degree 1 were not statistically different in terms of survival than teeth with non-probable FI. Regarding the vertical component of the defect, it was observed that the baseline subclass for all teeth that were lost remained the same 1 year after the treatment, and was significantly associated to lower survival rates in subclass B + C defects, when furcation subclass A served as the reference (3.84 [95% CI (1.03, 14.28), $P = 0.04$]). Membrane exposure however was the only factor that maintained its significance in the multivariate model (7.77 [95% CI (1.4, 43.14), $P = 0.01$]).

Factors such as gender, age, smoking, diabetes, endodontic treatment, initial PD and the location of the treated furcations were not statistically associated to the survival of the treated teeth (Table 3).

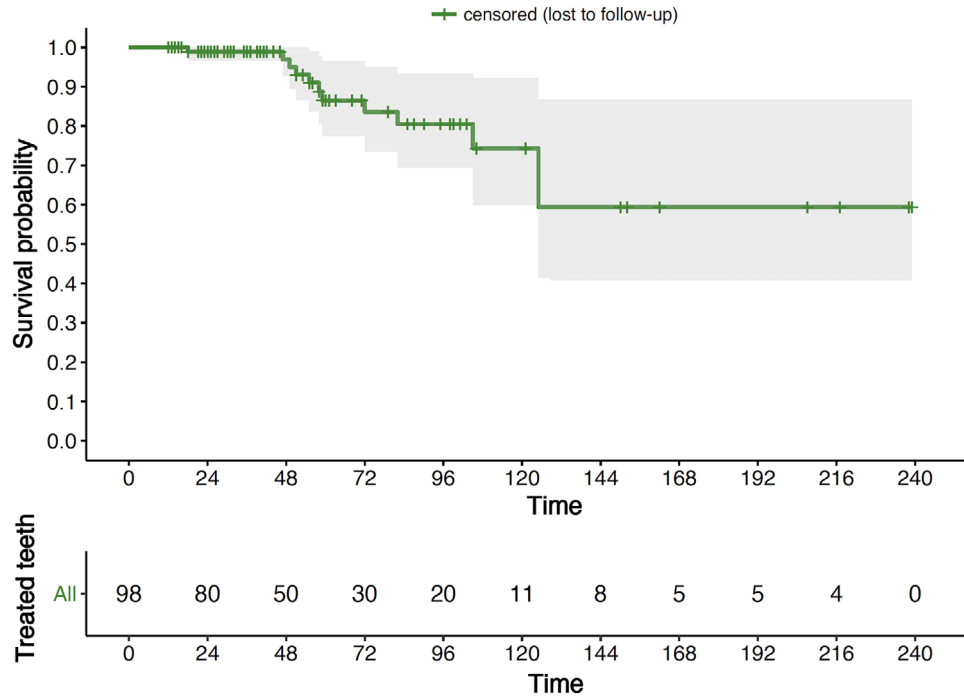


FIGURE 2 Kaplan-Meier survival curve for the entire follow-up period. Each event represents a tooth loss. The grayish hue represents the upper and lower limit of the 95% confidence bands

TABLE 3 Results of the multilevel cox proportional hazard models evaluating the effect of different variables on the survival of the treated teeth

Variable	Univariate analysis				Multivariate analysis			
	HR	Std. Error	95% CI	P-value	HR	Std. Error	95% CI	P-value
Sex (male)	0.7	0.60	0.22, 2.26	0.55				
Age	1.02	0.02	0.97, 1.07	0.4				
Smoking	2.04	0.68	0.54, 7.71	0.29				
Diabetes	0.000001	10180	0, Inf	0.99				
Membrane exposure	5.14	0.58	1.65, 16	0.005	7.77	0.87	1.40, 43.14	0.01
Maintenance/year	0.28	0.43	0.12, 0.65	0.003	0.33	0.80	0.07, 1.56	0.16
Endodontic treatment	2.18	0.78	0.47, 9.99	0.32				
Initial PD	1.41	0.47	0.56, 3.54	0.47				
Initial CAL	1.81	0.30	1.02, 3.22	0.04	1.58	0.33	0.83, 3.02	0.16
Horizontal component (Hamp 1975)—ref: none								
hamp degree 1	0.000001	10390	0, Inf	0.99				
hamp degree 2	12.27	1.084	1.47, 102.6	0.02	1.26	1.18	0.13, 12.73	0.84
hamp degree 3	24.15	1.112	2.73, 213.3	0.004	4.12	1.47	0.23, 73.72	0.37
Vertical component (Tarnow and Fletcher 1984)—ref: Class A								
vertical B + C	3.84	0.67	1.03, 14.28	0.04	3.79	1.09	0.45, 32.04	0.22
Furcation location (ref: lower buccal)								
upper buccal	2.63	1.00	0.37, 18.73	0.33				
disto-palatal	3.10	1.012	0.43, 22.55	0.26				
lower lingual	2.23	0.87	0.41, 12.18	0.36				
mesio-Palatal	2.45	1.00	0.35, 17.47	0.37				

Bold signifies statistical significance.

CI, confidence intervals; HR, hazard ratio.

**TABLE 4** Characteristics of the treated furcation defects

Furcation site	Furcation location	Total	Tooth loss (%)	CAL gain (mm)
	Buccal furcation of mandibular molars	31 (100)	5 (16.1)	2.35 ± 1.65
	Lingual furcation of mandibular molars	24 (100)	8 (33.3)	1 ± 1.03
	Mid-facial furcation of maxillary molars	16 (100)	3 (18.75)	0.75 ± 1.42
	Mesio-palatal furcation of maxillary molars	13 (100)	5 (38.46)	0.5 ± 1.17
	Disto-palatal furcation of maxillary molars	10 (100)	4 (40)	0.5 ± 1.73

Pre-op vertical classification	Subclass	Post-op vertical classification				
		Total	None	A	B	C
	A	61 (100)	27 (44.3)	29 (47.5)	5 (8.2)	0 (0)
	B	30 (100)	2 (6.7)	6 (20)	19 (63.3)	3 (10)
	C	7 (100)	0 (0)	0 (0)	1 (14.3)	6 (85.7)

Pre-op horizontal classification	Degree	Post-op horizontal classification				
		Total	0	1	2	3
	1	29 (100)	11 (37.9)	12 (41.4)	4 (13.8)	2 (6.9)
	2	65 (100)	41 (63.1)	7 (10.8)	13 (20)	4 (6.1)
	3	4 (100)	0 (0)	0 (0)	1 (25)	3 (75)

3.4 | Effect of the site topography of the furcation defect on regeneration

3.4.1 | Effect of the vertical component of the furcation defect on regeneration

Out of 98 treated teeth that presented, at baseline, 61 were classified as subclass A, 30 as subclass B and seven as subclass C (Table 4). One-year following the GTR treatment, 44.3% of the teeth that presented with subclass A had no detectable FI (as assessed with peri-apical radiographs), 47.5% remained subclass A, and 8.2% became subclass B. Teeth that presented with subclass B majorly remained the same (63.3%), however some teeth improved to subclass A (20%), and other become undetectable on peri-apical radiographs (6.7%) and 10% worsened to a subclass C. When GTR was attempted in subclass C, out of the seven treated teeth, six remained subclass C whereas only one improved to become subclass B.

3.4.2 | Effect of the horizontal component on regeneration of the furcation defect

Overall, GTR was attempted on 29 degree 1, 65 degree 2, and, 4 degree 3 defects (Table 3). One year after the surgery out of the defects that presented with degree 1, 37.9% did not have a probable furcation, 41.4% remained degree 1, 13.8% became degree 2, and 6.9% worsened to degree 3. It was also found that 1 year after the surgery, in degree 2 defects, 63.1% did not exhibit a probable furcation, 10.8% improved to degree 1, 20.0% remained degree 2, and 6.1% worsened to degree 3. When GTR was attempted in degree 3 furcation defects, out of four defects, three remained degree 3 and one showed moderate improvement by becoming degree 2.

3.4.3 | Membrane exposure

In total, membrane exposure occurred in 15 treated teeth, out of which three had been classified as degree I, 11 had been classified as degree II, and one was classified as having a degree III horizontal FI. Regarding the location of the treated defect, membrane exposure had occurred on the buccal and lingual of three, and five defects of mandibular molars, respectively, and three buccal, two disto-palatal and two mesio-palatal furcation defects in the maxillary molars.

4 | DISCUSSION

The main outcome of the present study was the survival of furcation-involved molars that had been treated with GTR. FI has been widely established as a risk factor for tooth loss.^{38–42} Results from this study found survival rates of 86.5% and 74.3% for molars treated with an allogeneic cancellous bone graft and a collagen membrane at 5, and 10 years, respectively. It is important to highlight that most of the studies evaluating the survival of FI teeth treated with GTR had only included molars with degree 2 furcation defects.^{28–30,43–45} Eickholz and colleagues, when evaluating the long-term outcomes of GTR treatment in FI teeth over a period of 10 years, found that two out of 18 teeth were lost leading to 83.3% survival rate at 10 years.⁴³ Our analyses however, consisted of furcation defects with diverse horizontal (degree 1, 2, and 3)³ and vertical (subclass A, B, and C)³⁴ components. Therefore, an exact and direct comparison of our results to previous studies may not be feasible. In the current study, when factors affecting the survival rate were evaluated, membrane exposure was shown to be of utmost importance, affecting the long-term



maintenance of the treated dentition. In fact, 50% of all extracted teeth in this study had experienced this complication. A major reason associated to the occurrence of this complication in furcation defects is the location of the bone at the mesial and distal aspects of the tooth. It has been suggested that when the furcation defect is a keyhole defect (where interproximal bone is coronal to the furcation fornix), coronal positioning of the flap would allow adequate coverage and stabilization of the barrier membrane.^{21,24,46}

Regarding the clinical parameters, a statistically significant CAL gain of 1.23 ± 1.48 mm was achieved 1 year after the procedure. This finding is in line with a prospective study reporting on treatment of 86 furcation defects, where on average 1.33 mm of CAL gain was achieved 1 year after GTR treatment with expanded polytetrafluoroethylene membranes combined with an allograft.²⁵ Additionally, in a split-mouth randomized clinical trial Wang et al. observed 1.67 ± 0.22 mm of CAL gain at 1 year, using collagen membranes alone for the treatment of mandibular molars with degree 2 FI.⁴⁵ Whether this CAL gain is clinically superior to the CAL gain obtained after open flap debridement surgery⁴⁷ remains debatable; In fact, in a systematic review with meta-analysis, Graziani and colleagues reported that open flap debridement in the treatment of degree 2 FI resulted in 0.55 mm CAL gain.⁴⁷

We found that the location of the treated furcation defect was shown to be highly associated with CAL gain at 1 year (Table 4). It was observed that compared to the buccal furcation of mandibular molars, the mid-facial, disto-palatal, and mesio-palatal furcations of upper molars were significantly associated with lower levels of CAL gain. Whereas, no significant difference was observed when comparing the buccal and the lingual furcations of mandibular molars. This could be attributed to the fact that the distance from the CEJ to the furcation entrance is typically larger in maxillary molars and that the anatomy in the mandibular molar furcation is more contained.^{5,48,49}

So far, the effect of the anatomical topography of the furcation defect has mostly been based on the horizontal component of the defect. Agreements have been made on the hypothesis that periodontal regeneration in furcation defects seems to be predictable in degree 2 (Table 4) as well as degree 1 in certain scenarios.^{17,23} However, because of the heterogeneity in the studies with GTR attempts in furcation defects, a strict strategy leading to a predictable outcome when treating different types of furcation defects may not be feasible.^{17,23} In the present study, 1-year following the GTR surgery, an undetectable FI (degree 0) was reported in 37% of the defects that had presented with degree 1 at baseline, 63% which had presented with degree 2 at baseline and none of the four defects that were degree 3 at initial evaluation. Our results show that GTR is indeed most predictable in degree 2 furcation defects. This could be attributed to the containment of the space in degree 2 FI, where more than 3 mm of horizontal space is

available to contain the bone graft that is packed against a bony wall, and then covered with a membrane. This type of defect would provide a high level of stability.⁵⁰ In addition, 11% of the remaining defects that presented with a degree 2 FI improved to a degree 1 furcation defect and molars with degree I FI have been shown to have a better long-term prognosis than molars with degree II defects.^{51,52} In fact, our study confirmed that degree 1 FI teeth do not have a higher chance of tooth loss than teeth with non-probable FI. Nonetheless, our results still support that a considerable amount of degree 1 FI could benefit from GTR. Finally, in agreement with the literature,^{21,27,53} as the 4 degree 3 FI defects included in this study did not show any benefit from GTR. This implies for management of degree 3 FI, other treatment options such as extraction, alveolar ridge preservation, and implant placement might be considered.⁵⁴⁻⁵⁶

The importance of the vertical component of furcation defect has been highlighted recently. In a retrospective study, Tonetti et al.³⁴ evaluated 200 subjects having molars with degree II defects with different subclasses (A, B and C). The included subjects were only undergoing periodontal maintenance because of an unfavorable cost-effectiveness profile. They found that the 10-year survival rate for molars with subclass A was 91%, for subclass B it was 67%, and for subclass C they found it to be 23%. They concluded that the subclass seems to be a viable predictor of survival of degree 2 FI molars.³⁴ Similarly, in another publication with a larger sample size (633 FI molars with periodontal maintenance for at least 5 years) that had included teeth having a diverse horizontal and vertical defect components, Nibali and co-workers found that that FI molars were five times more likely to be lost than teeth without FI, and that the vertical component significantly increased the risk of tooth loss.⁷ Thus, the vertical defect component is a critical aspect as this could broaden the indication for regeneration in furcation defects, as improvement in the vertical component could enhance the longevity of the treated tooth, regardless of obtaining a complete furcation closure.³⁴ In fact, Cortellini et al.²¹ recently evaluated the effect of papilla preservation flaps with the use of enamel matrix derivatives in severely compromised molars by a combination of furcation and infrabony defects on the vertical component of the furcation defect. The authors found that the vertical sub-classification improved 1-year after periodontal regenerative surgery in over 84% of the treated molars.²¹ In our study, the subclass of the included FI teeth was evaluated at baseline and 1-year after the GTR procedure, aiming to evaluate the effect of GTR on the vertical component. Teeth that presented originally with type A furcation defects, were re-evaluated after 1 year, and it was observed that 91.8% of these defects either had no detectable vertical component on peri-apical radiographs or remained with furcation type A (44.3%, and 47.5%, respectively). Additionally, only 8.2% declined to type B and none became



type C. The majority of the teeth that had presented with type B FI at baseline, remained type B (63.3%), with some improving (26.7%) while others worsening (10%). Finally, seven teeth presented with type C at baseline, and almost no improvement was noticed in these cases. Therefore, it seems that GTR is the most predictable in furcation defects with vertical subclassification A. Thus, understanding the three-dimensional anatomy of the furcation defect is fundamental in order to establish the correct treatment suggestion for this specific defect.

4.1 | Limitations

Among the limitations of this study are the retrospective nature of this project, such as lack of a control group for comparison of GTR with other treatment options for furcation defects, and absence of standardization protocols for the radiographic assessment which would have increased the reliability and precision of our measurements. Additionally, the unequal and relatively reduced sample size of the defects, particularly in some of the subclassifications, may limit the ability to generalize our results. Further, although the change in the incidence of bleeding on probing provides a general idea about the oral hygiene of the patients,^{57,58} full-mouth bleeding and local plaque scores were not available to evaluate the influence of oral hygiene status on the outcomes of GTR. Lastly, it would have been beneficial to have had access to treatment of furcation involved teeth with non-regenerative approaches (i.e., open flap debridement) to provide a direct comparison to regeneration therapy. Future studies in this area are strongly encouraged.

5 | CONCLUSION

Within the limitations of the present study, the following conclusions could be drawn: (1) GTR with the use of an allogeneic cancellous bone graft and then covered with a collagen membrane is a viable treatment for the management of teeth with furcation defects; (2) Membrane exposure, the vertical component of furcation, and the location of the furcation defect significantly affects the outcomes of GTR.

CONFLICT OF INTEREST

The authors do not have any financial interests neither directly nor indirectly in the companies whose materials were evaluated in this study. This manuscript was partially supported by the University of Michigan Periodontal Graduate Student Research Fund.

AUTHOR CONTRIBUTIONS

JM contributed to conception, design, data acquisition, and interpretation, drafted and critically revised the manuscript.

SB contributed to conception, design, data acquisition, statistical analysis, drafted and critically revised the manuscript. LT contributed to conception, design, data acquisition, and interpretation, drafted and critically revised the manuscript. C-WW, contributed to data interpretation, critically revised the manuscript. ST contributed to data interpretation, critically revised the manuscript. HLW contributed to conception and design, data interpretation and critically revised the manuscript. All authors gave final approval and agree to be accountable for all aspects of the work.

ORCID

Jad Majzoub  <https://orcid.org/0000-0002-8517-3239>
 Shayan Barootchi  <https://orcid.org/0000-0002-5347-6577>
 Lorenzo Tavelli  <https://orcid.org/0000-0003-4864-3964>
 Chin-Wei Wang  <https://orcid.org/0000-0001-9679-4121>
 Hom-Lay Wang  <https://orcid.org/0000-0003-4238-1799>

REFERENCES

1. Caton JG, Armitage G, Berglundh T, et al. A new classification scheme for periodontal and peri-implant diseases and conditions - Introduction and key changes from the 1999 classification. *J Periodontol.* 2018;89(suppl 1):S1-S8.
2. Pei X, Ouyang X, Luan Q, Suda R, Cao C. Natural 4-year periodontal progression of mandibular first molars in Chinese villagers based on radiographic records. *J Periodontol.* 2019;90(12):1390-1398.
3. Hamp SE, Nyman S, Lindhe J. Periodontal treatment of multirrooted teeth. Results after 5 years. *J Clin Periodontol.* 1975;2:126-135.
4. Tarnow D, Fletcher P. Classification of the vertical component of furcation involvement. *J Periodontol.* 1984;55:283-284.
5. Bower RC. Furcation morphology relative to periodontal treatment. Furcation entrance architecture. *J Periodontol.* 1979;50:23-27.
6. Nibali L, Krajewski A, Donos N, et al. The effect of furcation involvement on tooth loss in a population without regular periodontal therapy. *J Clin Periodontol.* 2017;44:813-821.
7. Nibali L, Sun C, Akcali A, Yeh YC, Tu YK, Donos N. The effect of horizontal and vertical furcation involvement on molar survival: a retrospective study. *J Clin Periodontol.* 2018;45:373-381.
8. Nibali L, Zavattini A, Nagata K, et al. Tooth loss in molars with and without furcation involvement - a systematic review and meta-analysis. *J Clin Periodontol.* 2016;43:156-166.
9. Aimetti M, Mariani GM, Ercoli E, Audagna M, Romano F. Soft tissue re-growth after osseous resective surgery with and without fibre retention technique. Four-year follow-up of a randomized clinical trial. *J Clin Periodontol.* 2018;45:364-372.
10. Mokbel N, Kassir AR, Naaman N, Megarbane JM. Root resection and hemisection revisited. Part I: a systematic review. *Int J Periodontics Restorative Dent.* 2019;39:e11-e31.
11. Rudiger SG, Dahlen G, Emilson CG. The furcation tunnel preparation-A prospective 5-year follow-up study. *J Clin Periodontol.* 2019;46:659-668.
12. Laugisch O, Cosgarea R, Nikou G, et al. Histologic evidence of periodontal regeneration in furcation defects: a systematic review. *Clin Oral Investig.* 2019;23:2861-2906.



13. Chen T-H, Tu Y-K, Yen C-C, Lu H-K. A systematic review and meta-analysis of guided tissue regeneration/osseous grafting for the treatment of Class II furcation defects. *J Dent Sci.* 2013;8:209e224.
14. Kinaia BM, Steiger J, Neely AL, Shah M, Bholra M. Treatment of Class II molar furcation involvement: meta-analyses of reentry results. *J Periodontol.* 2011;82:413-428.
15. Murphy KG, Gunsolley JC. Guided tissue regeneration for the treatment of periodontal intrabony and furcation defects. A systematic review. *Ann Periodontol.* 2003;8:266-302.
16. Majzoub J, Barootchi S, Tavelli L, Wang C-W, Chan H-L, Wang H-L. Guided tissue regeneration combined with bone allograft in intrabony defects: clinical outcomes and assessment of prognostic factors. *J Periodontol.* 2020;91:746-755.
17. Reddy MS, Aichelmann-Reidy ME, Avila-Ortiz G, et al. Periodontal regeneration - furcation defects: a consensus report from the AAP Regeneration Workshop. *J Periodontol.* 2015;86:S131-S133.
18. Schallhorn RG, McClain PK. Combined osseous composite grafting, root conditioning, and guided tissue regeneration. *Int J Periodontics Restorative Dent.* 1988;8:8-31.
19. Luepke PG, Mellonig JT, Brunsvold MA. A clinical evaluation of a bioresorbable barrier with and without decalcified freeze-dried bone allograft in the treatment of molar furcations. *J Clin Periodontol.* 1997;24:440-446.
20. De Leonardi D, Garg AK, Pedrazzoli V, Pecora GE. Clinical evaluation of the treatment of class II furcation involvements with bioabsorbable barriers alone or associated with demineralized freeze-dried bone allografts. *J Periodontol.* 1999;70:8-12.
21. Cortellini P, Cortellini S, Tonetti MS. Papilla preservation flaps for periodontal regeneration of molars severely compromised by combined furcation and intrabony defects: retrospective analysis of a registry-based cohort. *J Periodontol.* 2020;91:165-173.
22. Askar H, Di Gianfilippo R, Ravida A, Tattan M, Majzoub J, Wang HL. Incidence and severity of postoperative complications following oral, periodontal, and implant surgeries: a retrospective study. *J Periodontol.* 2019;90(11):1270-1278.
23. Avila-Ortiz G, De Buitrago JG, Reddy MS. Periodontal regeneration - furcation defects: a systematic review from the AAP Regeneration Workshop. *J Periodontol.* 2015;86:S108-130.
24. Sanz M, Jepsen K, Eickholz P, Jepsen S. Clinical concepts for regenerative therapy in furcations. *Periodontol.* 2000. 2015;68:308-332.
25. Bowers GM, Schallhorn RG, McClain PK, Morrison GM, Morgan R, Reynolds MA. Factors influencing the outcome of regenerative therapy in mandibular Class II furcations: part I. *J Periodontol.* 2003;74:1255-1268.
26. Horwitz J, Machtei EE, Reitmeir P, Holle R, Kim TS, Eickholz P. Radiographic parameters as prognostic indicators for healing of class II furcation defects. *J Clin Periodontol.* 2004;31:105-111.
27. Jepsen S, Eberhard J, Herrera D, Needleman I. A systematic review of guided tissue regeneration for periodontal furcation defects. What is the effect of guided tissue regeneration compared with surgical debridement in the treatment of furcation defects. *J Clin Periodontol.* 2002;29(suppl 3):103-116. discussion 160-102.
28. Jaiswal R, Deo V. Evaluation of the effectiveness of enamel matrix derivative, bone grafts, and membrane in the treatment of mandibular Class II furcation defects. *Int J Periodontics Restorative Dent.* 2013;33:e58-e64.
29. Bremm LL, Sallum AW, Casati MZ, Nociti FH, Sallum EA. Guided tissue regeneration in Class II furcation defects using a resorbable polylactic acid barrier. *Am J Dent.* 2004;17:443-446.
30. Houser BE, Mellonig JT, Brunsvold MA, Cochran DL, Meffert RM, Alder ME. Clinical evaluation of anorganic bovine bone xenograft with a bioabsorbable collagen barrier in the treatment of molar furcation defects. *Int J Periodontics Restorative Dent.* 2001;21:161-169.
31. Dogan GE, Aksoy H, Demir T, et al. Clinical and biochemical comparison of guided tissue regeneration versus guided tissue regeneration plus low-level laser therapy in the treatment of class II furcation defects: a clinical study. *J Cosmet Laser Ther.* 2016;18:98-104.
32. Anderegg CR, Metzler DG, Nicoll BK. Gingiva thickness in guided tissue regeneration and associated recession at facial furcation defects. *J Periodontol.* 1995;66:397-402.
33. Cury PR, Sallum EA, Nociti FH, Jr, Sallum AW, Jeffcoat MK. Long-term results of guided tissue regeneration therapy in the treatment of class II furcation defects: a randomized clinical trial. *J Periodontol.* 2003;74:3-9.
34. Tonetti MS, Christiansen AL, Cortellini P. Vertical subclassification predicts survival of molars with class II furcation involvement during supportive periodontal care. *J Clin Periodontol.* 2017;44:1140-1144.
35. Alboukadel K, Kosinski M. Survminer: drawing survival curves using 'ggplot2'. 2018.
36. Therneau T. *A Package for Survival Analysis in S_*. version 2.38. 2015.
37. Wickham H. *ggplot2: Elegant Graphics for Data Analysis.* 2016.
38. Helal O, Gostemeyer G, Krois J, Fawzy El Sayed K, Graetz C, Schwendicke F. Predictors for tooth loss in periodontitis patients: systematic review and meta-analysis. *J Clin Periodontol.* 2019;46:699-712.
39. Graetz C, Salzer S, Plaumann A, et al. Tooth loss in generalized aggressive periodontitis: prognostic factors after 17 years of supportive periodontal treatment. *J Clin Periodontol.* 2017;44:612-619.
40. Graetz C, Schutzhold S, Plaumann A, et al. Prognostic factors for the loss of molars—an 18-years retrospective cohort study. *J Clin Periodontol.* 2015;42:943-950.
41. Dannewitz B, Krieger JK, Husing J, Eickholz P. Loss of molars in periodontally treated patients: a retrospective analysis five years or more after active periodontal treatment. *J Clin Periodontol.* 2006;33:53-61.
42. Huynh-Ba G, Kuonen P, Hofer D, Schmid J, Lang NP, Salvi GE. The effect of periodontal therapy on the survival rate and incidence of complications of multirooted teeth with furcation involvement after an observation period of at least 5 years: a systematic review. *J Clin Periodontol.* 2009;36:164-176.
43. Eickholz P, Pretzl B, Holle R, Kim TS. Long-term results of guided tissue regeneration therapy with non-resorbable and bioabsorbable barriers. III. Class II furcations after 10 years. *J Periodontol.* 2006;77:88-94.
44. Lamb JW, 3rd GreenwellH, Drisko C, Henderson RD, Scheetz JP, Rebitski G. A comparison of porous and non-porous teflon membranes plus demineralized freeze-dried bone allograft in the treatment of class II buccal/lingual furcation defects: a clinical reentry study. *J Periodontol.* 2001;72:1580-1587.
45. Wang HL, O'Neal RB, Thomas CL, Shyr Y, MacNeil RL. Evaluation of an absorbable collagen membrane in treating Class II furcation defects. *J Periodontol.* 1994;65:1029-1036.



46. Pontoriero R, Nyman S, Ericsson I, Lindhe J. Guided tissue regeneration in surgically-produced furcation defects. An experimental study in the beagle dog. *J Clin Periodontol*. 1992;19:159-163.
47. Graziani F, Gennai S, Karapetsa D, et al. Clinical performance of access flap in the treatment of class II furcation defects. A systematic review and meta-analysis of randomized clinical trials. *J Clin Periodontol*. 2015;42:169-181.
48. Gher MW, Jr, Dunlap RW. Linear variation of the root surface area of the maxillary first molar. *J Periodontol*. 1985;56:39-43.
49. Mandelaris GA, Wang HL, MacNeil RL. A morphometric analysis of the furcation region of mandibular molars. *Compend Contin Educ Dent*. 1998;19:113-116. 118-120; quiz 122.
50. Wang HL, Boyapati L. "PASS" principles for predictable bone regeneration. *Implant Dent*. 2006;15:8-17.
51. Salvi GE, Mischler DC, Schmidlin K, et al. Risk factors associated with the longevity of multi-rooted teeth. Long-term outcomes after active and supportive periodontal therapy. *J Clin Periodontol*. 2014;41:701-707.
52. McGuire MK, Nunn ME. Prognosis versus actual outcome. III. The effectiveness of clinical parameters in accurately predicting tooth survival. *J Periodontol*. 1996;67:666-674.
53. Pontoriero R, Lindhe J. Guided tissue regeneration in the treatment of degree III furcation defects in maxillary molars. *J Clin Periodontol*. 1995;22:810-812.
54. Galindo-Moreno P, Suarez Lopez Del Amo F, Faria-Almeida R, et al. The 2(nd) baltic osseointegration academy and lithuanian university of health sciences consensus conference 2019. summary and consensus statements: group II - extraction socket preservation methods and dental implant placement outcomes within grafted sockets. *J Oral Maxillofac Res*. 2019;10:e9.
55. Barootchi S, Wang HL, Ravid A, et al. Ridge preservation techniques to avoid invasive bone reconstruction: a systematic review and meta-analysis: naples Consensus Report Working Group C. *Int J Oral Implantol (New Malden)*. 2019;12:399-416.
56. Majzoub J, Ravid A, Starch-Jensen T, Tattan M, Suarez-Lopez Del Amo F. The influence of different grafting materials on alveolar ridge preservation: a systematic review. *J Oral Maxillofac Res*. 2019;10:e6.
57. Checchi L, Montevecchi M, Checchi V, Zappulla F. The relationship between bleeding on probing and subgingival deposits. An endoscopic evaluation. *Open Dent J*. 2009;3:154-160.
58. Matuliene G, Pjetursson BE, Salvi GE, et al. Influence of residual pockets on progression of periodontitis and tooth loss: results after 11 years of maintenance. *J Clin Periodontol*. 2008;35:685-695.

SUPPORTING INFORMATION

Additional supporting information may be found online in the Supporting Information section at the end of the article.

How to cite this article: Majzoub J, Barootchi S, Tavelli L, Wang CW, Travan S, Wang HL. Treatment effect of guided tissue regeneration on the horizontal and vertical components of furcation defects: A retrospective study. *J Periodontol*. 2020;91:1148–1158. <https://doi.org/10.1002/JPER.19-0529>