

Tacrolimus inpatient variability in solid organ transplantation: A multiorgan perspective

Lauren Schumacher¹  | Abbie D. Leino²  | Jeong M. Park^{1,2} 

¹Department of Pharmacy, Michigan Medicine, Ann Arbor, MI, USA

²Department of Clinical Pharmacy, College of Pharmacy, University of Michigan, Ann Arbor, MI, USA

Correspondence Jeong M. Park, 1111 Catherine Street, VVH 302, Ann Arbor, MI 48109-2054, USA. Email: jeongp@med.umich.edu

Abstract

Background: Tacrolimus therapy in solid organ transplant (SOT) recipients is challenging due to its narrow therapeutic window and pharmacokinetic variability both between patients and within a single patient. Inpatient variability (IPV) of tacrolimus trough concentrations has become a novel marker of interest for predicting transplant outcomes. The purpose of this review is to evaluate the association of tacrolimus IPV with graft and patient outcomes and identify interventions to improve IPV in SOT recipients.

Methods: A systematic review of the literature was performed using PubMed and Embase from database inception to September 20, 2020. Studies were eligible only if they evaluated an association between tacrolimus IPV and transplant outcomes. Both pediatric and adult studies were included. Measures of variability were limited to standard deviation, coefficient of variation, and time in therapeutic range.

Results: Forty-four studies met the inclusion criteria. Studies were published between 2008 and 2020 and were observational in nature. Majority of data were published in adult kidney transplant recipients and identified an association with rejection, de novo donor specific antibody (dnDSA) formation, graft loss, and patient survival. Evaluation of IPV-directed interventions was limited to small preliminary studies.

Conclusions: High tacrolimus IPV has been associated with poor outcomes including acute rejection, dnDSA formation, graft loss, and patient mortality in SOT recipients. Future research should prospectively explore IPV-directed interventions to improve transplant outcomes.

KEYWORDS

coefficient of variation, inpatient variability, outcomes, solid organ transplantation, standard deviation, tacrolimus, therapeutic drug monitoring, time in therapeutic range

1 | INTRODUCTION

Tacrolimus remains the primary immunosuppressive agent used in solid organ transplantation as it is highly effective at preventing rejection and graft loss compared with other agents.¹ Due to its narrow therapeutic index and extensive pharmacokinetic variability, individualized and frequent dose adjustments are necessary to

minimize therapeutic failures, such as rejection and debilitating adverse effects.² Although trough concentration is most frequently utilized for therapeutic drug monitoring (TDM) of tacrolimus therapy, a snapshot of tacrolimus exposure at a single time point has limited performance as a surrogate for drug exposure over time and therapeutic responses.³ Therefore, it remains a critical need to identify more reliable TDM tools to optimize personalized

tacrolimus therapy and improve long-term outcomes in solid organ transplant recipients.

In recent years, inpatient variability (IPV) in trough concentrations has become recognized as a novel marker to identify transplant recipients at risk for poor outcomes, such as rejection and graft loss.⁴⁻⁶ IPV describes the extent of variation in tacrolimus trough concentrations over time for a single patient and is frequently expressed using standard deviation (SD), coefficient of variation (CV), and time in therapeutic range (TTR). These IPV metrics seem particularly attractive as all three can be calculated by utilizing trough concentrations from routine TDM. It is hypothesized that IPV, as a composite measure of drug exposure over time, may better capture the overall degree to which an individual patient is at risk for complications from over or under exposure to tacrolimus. Although the understanding of sources of variability continues to evolve, causes of IPV are thought to include nonadherence, drug-drug interactions, drug-food interactions, and drug-disease interactions, such as diarrhea.⁴

Previous published reviews on tacrolimus IPV provided a focused examination of available literature, with conclusions generally derived from data in adult kidney transplant recipients.⁴⁻⁶ In this systematic review, we critically evaluate the literature for the relationship between tacrolimus IPV and outcomes in solid organ transplantation, and discuss the strategies that have been utilized to reduce IPV. The aim was to expand upon previous reviews and comprehensively appraise literature across all organ types and age groups to understand how IPV may begin to be integrated into clinical care.

2 | METHODS

A search for relevant articles published from inception to September 20, 2020, was conducted using the databases PubMed and Embase. Search terms included: "tacrolimus," "variability," ("inpatient variability" OR "IPV"), "transplant," ("coefficient of variation" OR "CV"), ("standard deviation" OR "SD"), and ("time in therapeutic range" OR "TTR"). Boolean operators were used to produce the final search algorithm: ("Tacrolimus" OR "Tacrolimus" [Mesh]) AND "variability" AND ("Organ Transplantation" [Mesh] OR "Transplantation" [Mesh] OR "transplant") AND ("coefficient of variation" OR "CV" OR "standard deviation" OR "SD" OR "time in therapeutic range" OR "TTR" OR "IPV"). References of relevant articles were reviewed for additional studies.

Articles were excluded because of overlap, irrelevance (did not evaluate tacrolimus IPV using SD, CV, or TTR), or study design (did not relate IPV to objective outcomes). Both pediatric and adult studies were included. As there are a sufficiently large number of full articles describing IPV and transplant outcomes, abstracts or conference papers were excluded for this portion of the review to capture the best available evidence. For the developing topic of interventions to address IPV, abstracts were included to capture expanding areas of research.

3 | RESULTS

Using the search strategy described, 127 unique references were identified. After applying exclusion criteria, 44 studies were included in this review (Figure 1). There were no randomized or interventional studies; data supporting the association of IPV and outcomes were limited to prospective observational and retrospective cohort studies. The results of the included studies are summarized in Tables 1-3.

3.1 | Inpatient variability and transplant outcomes

3.1.1 | Standard deviation

Investigations of SD as a tacrolimus IPV tool preceded CV and TTR in both adult and pediatric transplant recipients. Early reports evaluated tacrolimus SD as a measure of medication adherence in pediatric liver transplant recipients.⁷ Later, Venkat et al studied SD as a predictor of outcomes in pediatric liver transplant recipients.⁸

Pediatrics

The Medication Adherence in children who had Liver Transplant study evaluated the association of tacrolimus SD and late biopsy-proven acute rejection (BPAR) in adolescent liver transplant recipients. The odds of late BPAR were 2.5 times greater when SD greater than 2.5. Further sensitivity analysis suggested SD greater than 2 as the optimal threshold for predicting rejection.⁹ A second analysis was completed to associate duration of variability with outcomes. SD less than 2 for 2 years of follow-up had the lowest rate of rejection (4.4%). Late acute rejection frequency was significantly higher for those with SD greater than 2 for 1 year (22.9%) and 2 years (34.9%, $p < 0.001$).¹⁰

Two other studies in pediatric recipients reported similar associations with rejection, one also identifying an increased risk of graft loss.^{8,11} In a study of adolescent heart, kidney, liver, and lung transplant recipients, those who experienced rejection had a significantly higher SD compared with those who were rejection-free (2.7 vs 1.5, $p = 0.005$), respectively. Additionally, SD greater than 2 after 6 months posttransplant was predictive of graft loss.¹¹

Not all studies in the pediatric population have identified an association between SD and rejection.^{12,13} Higher rates of alanine aminotransferase (ALT) elevation without increased acute rejection was observed in pediatric liver transplant recipients.¹² Results may have been influenced by the younger age of this cohort compared with other studies and small sample size. A study in adolescent kidney transplant recipients indicated numerically higher SD in those with BPAR (5.3 BPAR vs 3.5 no BPAR, $p = 0.031$) but was not significant per study protocol (prespecified $\alpha = 0.01$). Authors attributed the higher overall SD in their cohort to be related to inclusion of all levels, as other groups excluded undetectable levels or outliers due to acute illness or drug interactions.¹³ However, in

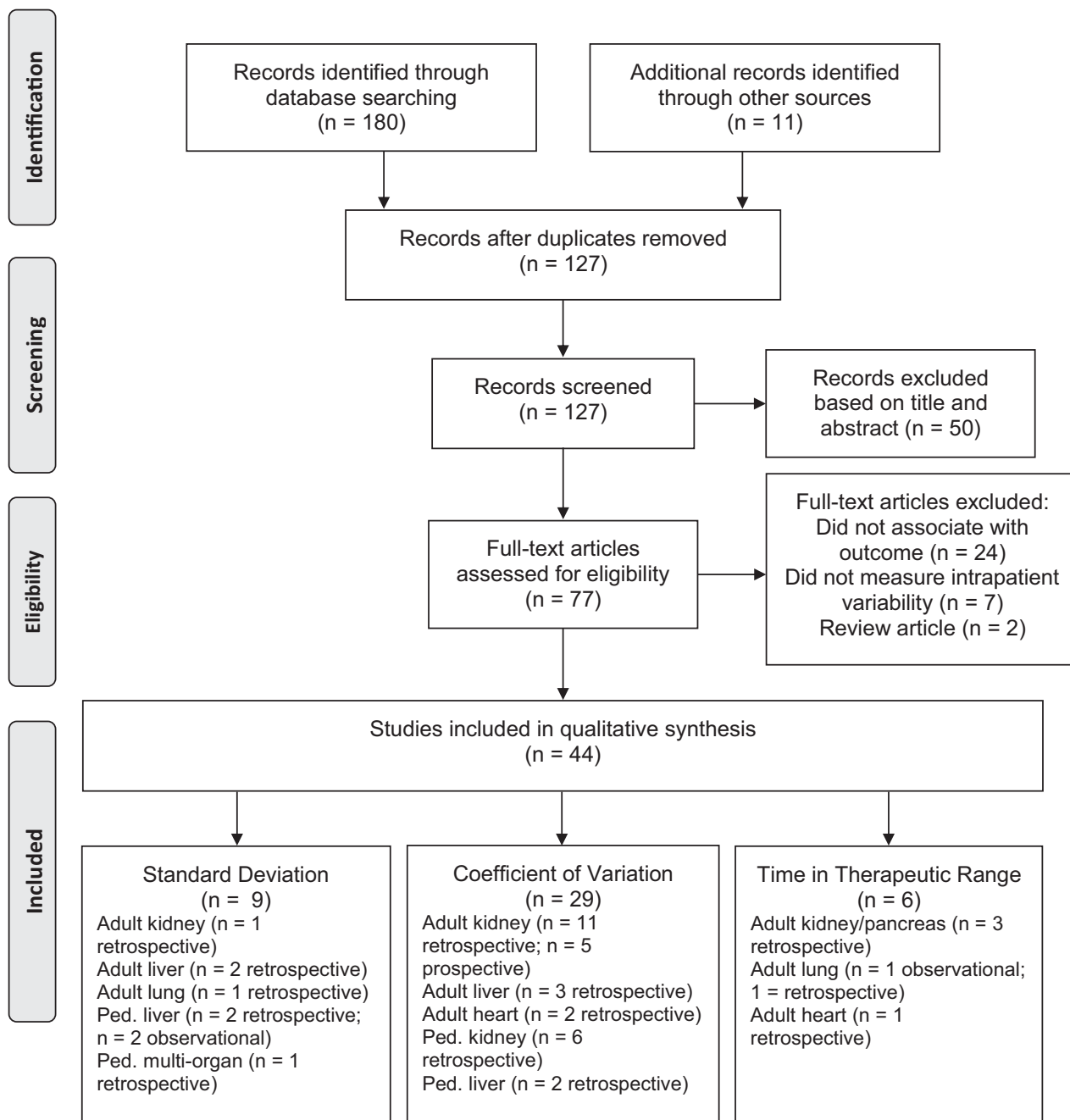


FIGURE 1 Preferred Reporting Items for Systematic Reviews and Meta-Analyses (PRISMA) flow diagram for systematic review

a similar age group, inclusion of outliers did not result in similarly elevated SD.¹¹ At this time, no studies have evaluated tacrolimus level selection on IPV calculations or the impact on predictive value.

Liver

High SD in adult liver transplant recipients has been associated with increased risk of rejection and graft failure.^{14,15} SD was significantly higher in patients with BPAR compared with those who were rejection-free (3.2 vs 1.5, $p < 0.01$, respectively).¹⁴ Another study in this population determined SD greater than 2.1 to be predictive of graft failure.¹⁵

Other organs

Elevated SD has also been related to poor outcomes in adult kidney and lung transplant recipients.^{16,17} Time-varying SD in kidney transplant recipients greater than or equal to 1 year posttransplant was predictive of worse long-term outcomes.¹⁶ In lung transplant recipients, elevated SD after 6 months posttransplant was independently associated with time to chronic lung allograft dysfunction (CLAD) and patient death. For each one-unit increase in SD, the risk of CLAD increased by 46% and the risk of death increased by 27%. However, elevated SD between 0 and 6 months posttransplant was not associated with increased risk of CLAD or mortality.¹⁷ These important findings suggest that elevated SD

TABLE 1 Summary of studies evaluating tacrolimus inpatient variability defined by SD on outcomes

Author Year N	Population	SD measurement	Tacrolimus measurement	Follow-up	Study groups	High SD and outcomes				
						Rejection	dnDSA	Graft loss	Mortality	Other
Venkat et al (2008) ⁸ n = 117	Pediatric liver (median age 9.1 yrs)	≥ 12 mos posttransplant	≥ 4 outpatient levels MEIA Selective: excluded levels > 2 SD from mean in association with explainable causes	5.3 yrs	High SD defined as > 2 (cohort median 1.6)	↑ (Late BPAR)	--	--	--	--
Shemesh et al (2017) ⁹ n = 379	Pediatric liver transplant (mean age at baseline 9.6 yrs)	Rolling SD over 12 mos between 0 and 24 mos posttransplant	≥ 3 levels (mean 11.8) Selective: discarded undetectable readings or assigned local laboratory's lower limit of detection	2 yrs	Rejection (SD 2.4) vs rejection-free (SD 2.6)	↑ (Late BPAR)	--	--	--	--
Shemesh et al (2018) ¹⁰ n = 400	Pediatric liver	Rolling SD over 12 mos between 0 and 24 mos posttransplant	≥ 3 levels Selective: discarded undetectable readings or assigned local laboratory's lower limit of detection	2 yrs	High SD defined as SD > 2	↑ (Late BPAR)	--	--	--	--
Pollock-Barziv et al (2010) ¹¹ n = 144	Pediatric heart, kidney, liver, and lung (median age at transplant approx. 13.0 yrs)	3–6 mos preceding rejection or last 6 mos follow-up	All levels (median 12 levels in rejectors and 7 levels in nonrejectors)	Up to 10 yrs	High SD defined as SD > 2	↑ (Late AR)	--	↑	--	--
de Oliveria et al (2017) ¹² n = 50	Pediatric liver (mean age at transplant 4 yrs)	13–35 mos posttransplant	≥ 5 outpatient levels CMIA Selective: levels during concomitant fluconazole, anticonvulsant, and/or diarrhea were excluded	--	High SD defined as ≥ 2	↔	--	--	--	↑ALT > 60 IU/L
Hsiau et al (2011) ¹³ n = 46	Pediatric kidney (median age 14.7 yrs BPAR vs 13.8 yrs no BPAR)	1–12 mos posttransplant	Levels at least monthly (median 17.2 levels) Selective: excluded levels with concomitant diarrhea	4.3 yrs	BPAR (SD 5.3) vs no BPAR (SD 3.5)	↔ (BPAR)	--	--	--	--
Christina et al (2014) ¹⁴ n = 150	Adult liver	≥ 6 mos posttransplant	≥ 3 levels at 3 mo intervals over 3 yrs Selective: discarded undetectable readings	Approx. 4 yrs	Rejection (SD 3.8) vs rejection-free (SD 2.3)	↑ (BPAR)	--	--	--	--

(Continues)

TABLE 1 (Continued)

Author Year N	Population	SD measurement	Tacrolimus measurement	Follow-up	Study groups	High SD and outcomes				
						Rejection	dnDSA	Graft loss	Mortality	Other
Lieber et al. (2013) ¹⁵ n = 359	Adult liver	6–18 mos posttransplant	≥ 3 levels	At least 5 yrs	Median as cut point, > 2.1	--	--	↑	--	--
Sapir-Pichhadze et al. (2014) ¹⁶ n = 356	Adult kidney	Time-varying SD ≥ 1 yr posttransplant	Median 15 levels	3.72 yrs	SD thresholds (> 1.5, > 2.0, > 2.5, and > 3.0)	↑ ^a	--	↑ ^a	--	--
Gallagher et al. (2015) ¹⁷ n = 110	Adult lung	0 to 6 mos, 6 to 12 mos, and 12 to 24 mos (combined 6–12 and 12–24 for analyses)	Median 11–15 levels per time period EMIT	60 mos	Outcome vs outcome-free (median 4.01 mos 0–6; 2.84 mos 6–12; 2.85 mos 12–24)	↑ (CLAD)	--	--	↑	--

Notes: ↑ = increased risk; ↔ = no difference between groups; -- = not studied.

Abbreviations: AR, acute rejection; BPAR, biopsy-proven acute rejection; CLAD, chronic lung allograft dysfunction; CMI, chemiluminescent immunoassay; dnDSA, de novo donor specific antibodies; EMIT, enzyme multiplied immunoassay technique; MEIA, microparticle enzyme immunoassay; SD, standard deviation.

^aComposite end point of late acute rejection, transplant glomerulopathy, or total graft loss (graft failure or death with function).

alone in the early posttransplant period is likely a poor predictor for transplant outcomes.

3.1.2 | Coefficient of variation

Borra et al were the first to report tacrolimus mean absolute deviation, a measure of IPV similar to CV, and the association with long-term outcomes in adult kidney transplant recipients.¹⁸ Since then, tacrolimus CV has become the most common predictor of patient and graft outcomes.

Kidneys

Three studies have evaluated tacrolimus CV early in the posttransplant course, here defined as within 6 months of transplant.^{19–21} Of the 2 studies that evaluated acute rejection at 6 months posttransplant, an association with CV was not observed.^{19,20} This may be explained by the use of induction immunosuppression. Long-lasting lymphocyte depleting agents, such as antithymocyte globulin or alemtuzumab, likely offers protection against the potentially harmful effects of tacrolimus variability in the early posttransplant period. Contrary to these reports, high CV in the early posttransplant period has been associated with graft loss in the long-term setting.^{19,21} Interpretation of these results should be taken in the context of other findings, including absence of association with acute rejection and limitations of early IPV. As tacrolimus variability is expected early posttransplant, due to acute changes in patient status and medication regimens, early measurement of IPV may not be a good predictor of outcomes.^{4,22} An observation of interest within these studies is subtherapeutic tacrolimus troughs as an independent predictor of acute rejection.^{20,21} The importance of early goal trough attainment has been previously established and may provide more meaning than IPV alone in the early posttransplant period.^{23,24}

As opposed to early CV, evaluation of tacrolimus CV after the acute posttransplant period, here defined as at least 6 months of measurement beginning after 3 months posttransplant, has been associated with increased rates of rejection.^{25–31} The definition of high CV varied among studies. Most frequently, high CV was defined as CV greater than the cohort median or highest quartile. Acute rejection has been associated with CV ranging from greater than 15% to greater than 35%. In most of the studies, a CV of 25% and above was associated with acute rejection greater than or equal to 1 year posttransplant. Although the particular cutoff selected by the investigator varied, the sample medians of CV were generally comparable but exceed the inherent variability in a controlled environment of a clinical trial (median CV range of 13.7–16.4%).^{32–34}

High CV after the acute posttransplant period has also been associated with graft dysfunction, graft loss, de novo donor specific antibody (dnDSA) formation, and patient mortality in adult kidney transplant recipients.^{25,27–30,35–41} Again, the numerical definition of high CV varied among studies but CV cutoffs associated with graft loss mirrored those associated with acute rejection (>15% to >35%).^{25,27–29,35,37–41} Additionally, a trend for subtherapeutic

TABLE 2 Summary of studies evaluating tacrolimus in-trapatient variability defined by cv on outcomes

Author Year n	Population	CV measurement	Tacrolimus measurement	Follow-up	Study groups	High CV and outcomes				
						Rejection	dnDSA	Graft loss	Mortality	Other
Seibert et al (2018) ¹⁹ n = 1472	Adult kidney	0–6 mos posttransplant	≥ 5 levels (mean 17.7) All levels included LC/MS	Up to 10 yrs	Highest quartile (CV > 49% AA; > 38% in EA) vs all other quartiles combined	↔	--	↑	--	--
Israni et al (2013) ²⁰ n = 1930	Adult kidney	Day 8 to 6 mos posttransplant	Mean 16.3 levels per patient Two measurements each from wks 1–8 and one from mos 3, 4, 5, and 6 posttransplant	6 mos	AR (31%) vs no AR (33%)	↔	--	--	--	--
Rozen-Zvi et al (2017) ²¹ n = 803	Adult kidney	Time-weighted CV 0–6 mos posttransplant	Mean 20.7 levels MEIA, CMIA	3.7 yrs	Highest tertile vs all others (mean CV 34.8%)	--	--	↑	--	--
Whalen et al (2017) ²⁵ n = 432	Adult kidney	6–12 mos posttransplant	All levels (median 7–8 levels) LC/MS Selective: excluded non-troughs	4 yrs	Median as cut point, > 15%	↑	--	↑	--	↓eGFR
Huang et al (2016) ²⁶ n = 161	Adult kidney	6 mos prior to BPAR or study end	CMIA	4.3 yrs	Rejection (CV 39%) vs rejection-free (CV 12.1%)	↑	--	--	--	--
Shuker et al (2016) ²⁷ n = 808	Adult kidney	6–12 mos posttransplant	≥ 3 outpatient levels (median 5 levels) EMIT	5.5 yrs	Median as cut point, > 16.2%	↑ ^a	--	↑ ^a	--	--
Goodall et al (2017) ²⁸ n = 628	Adult kidney	6–12 mos posttransplant	Outpatient levels (mean 8.9) LC/MS	Until graft loss or 8 yrs (mean 4.7 yrs)	Lowest variability: < 1st quartile (13.45%) (AR) Low variability: < median (18.15%) High variability: < 3rd quartile Highest variability: > 3rd quartile (25.27%)	↑	↑	↑	↔	--
Taber et al (2017) ²⁹ n = 1411	Adult kidney	1 mo–387 days posttransplant or until day before rejection	LC/MS Selective: excluded non–12 hr troughs or levels > 30 ng/ml	4.6 yrs	Median CV (Non-AA): 34.8% Median CV (AA): 39.9%	↑ only in AA	--	--	↑	--

(Continues)

TABLE 2 (Continued)

Author Year n	Population	CV measurement	Tacrolimus measurement	Follow-up	Study groups	High CV and outcomes				
						Rejection	dnDSA	Graft loss	Mortality	Other
Sharma et al (2019) ³⁰ n = 286	Adult kidney	Highest and lowest trough for each month from 2 to 12 mos posttransplant	Median 35 levels Selective: excluded non-12 hr trough levels	Up to 40 mos	High CV defined as \geq 35% (highest quartile)	↑ (early, late, and recurrent/ persistent)	↔	↑	--	↑Chronicity score ^b
Scheel et al (2017) ³¹ n = 267	Adult kidney	12 mos prior to nonadherence assessment (> 6 mos posttransplant)	\geq 4 outpatient levels (mean 9.6) LC-MS/MS Standardized by target level	7.1 yrs	Rejection vs rejection-free (cohort mean 21.3%)	↑ (BPAR)	--	--	--	--
Mo et al (2019) ³⁵ n = 671	Adult kidney	6-12 mos posttransplant	\geq 3 outpatient levels (approx. 7 levels) LC/MS Selective: excluded non- trough levels	58.5 mos	Median as cut point, >20.5%	↑	--	↑	↔	↑ Chronicity score ^c
Vanhove et al (2016) ³⁶ n = 220	Adult kidney	6-12 mos posttransplant	\geq 3 outpatient levels (mean 5.3) MEIA, CMIA Selective: excluded non- trough levels	2 yrs	3 groups based on median: Low: < 14.4% Middle: 14.4-22.1% High: > 22.1%	--	--	--	--	↑ Chronicity score ^d
O'Regan et al (2016) ³⁷ n = 394	Adult kidney	3-12 mos posttransplant	All levels (median of 6-10) MEIA	6.94 yrs	4 groups based on median CV quartile: Q1: 12.5% Q2: 18.17% Q3: 24.63% Q4: 36.91%	↔ (BPAR)	--	↑	↔	--
Rodrigo et al (2016) ³⁸ n = 310	Adult kidney	4-12 mos posttransplant	\geq 3 outpatient levels (mean 7) MEIA, CMIA	6.6 yrs	High CV defined > 30% (median 29.1%)	↔ (BPAR)	↑	↑	--	↓eGFR
Susal et al (2019) ³⁹ n = 6639	Adult kidney	1, 2, and 3 yrs posttransplant	--	7.4 yrs	High CV defined as > 30% (median 34%)	--	--	↑	↑	--
Rahamimov et al (2019) ⁴⁰ n = 878	Adult kidney	\geq 6 mos posttransplant	Time-weighted CV MEIA	1263 days	Highest CV defined as > 25% (mean 26.2%)	--	--	↑	--	--
Sablík et al (2018) ⁴¹ n = 248	Adult kidney	3 yrs prior to AMR diagnosis, > 6 mos posttransplant	\geq 8 outpatient levels over time period of 2 yrs	3 yrs	Case (mean 24.4%) vs control (mean 23.6%)	↔ (Chronic active AMR)	--	↑ (those with AMR)	--	--

(Continues)

TABLE 2 (Continued)

Author Year n	Population	CV measurement	Tacrolimus measurement	Follow-up	Study groups	High CV and outcomes				
						Rejection	dnDSA	Graft loss	Mortality	Other
Rayar et al (2018) ⁴² n = 812	Adult liver	Day 8 to 30 posttransplant	All levels	Up to 12 yrs	High CV defined as $\geq 40\%$ (third quarter limit of 41.8%)	↔	--	↑	↑	--
Del Bello et al (2018) ⁴³ n = 116	Adult liver	Mos 0–24 posttransplant	≥ 3 levels (median 10) Dose-corrected LC/MS	Up to 2 yrs	Continuous, $> 35\%$ and $> 40\%$ (median 30.5%)	↑ (BPAR)	↑	↔	↔	--
Van Der Veer et al (2019) ⁴⁴ n = 326	Adult liver	6–18 mos posttransplant	≥ 5 outpatient levels (median 7) Only levels prior to rejection Dose-normalized LC-MS/MS and EMIT	5.2 yrs (up to 17 yrs)	Median as cut point, $> 28\%$	↔	--	↔	--	↓ eGFR (if low baseline)
Gueta et al (2018) ⁴⁶ n = 72	Adult heart	3–12 mos posttransplant	≥ 2 levels at steady state (mean 13.5) CMIA	51.1 mos	Median as cut point, $> 28.8\%$	↑ (total rejection score ^e)	↔	--	↔	--
Shuker et al (2018) ⁴⁷ n = 86	Adult heart	6–18 mos posttransplant	≥ 3 outpatient levels EMIT, CMIA	4 yrs	Median as cut point, $> 17.7\%$	↔ (CAV or BPAR)	--	--	--	--
Abu Bakar et al (2019) ⁴⁸ n = 50	Pediatric kidney (mean age of transplant: 10.85 yrs for cases, 12–18 mos posttransplant controls)	12 mos prior to rejection, or up to 6 mos if ACR occurred 12–18 mos posttransplant	≥ 3 levels	1–8 yrs	Rejection (CV 44%) vs rejection-free (CV 24%)	↑ (Late AR)	--	--	--	↑ Creatinine
Kaya Aksoy (2019) ⁴⁹ n = 67	Pediatric kidney (mean age 15.16 yrs)	0–6, 6–12 and ≥ 12 mos posttransplant	Mean 22.5 levels 0–6 mos, 6.24 levels 6–12 mos, 24.3 levels ≥ 12 mos EMIT Selective: discarded levels > 30 ng/ml	50.8 mos	CV $> 32\%$ based on ROC analysis	--	↑	--	--	↔ eGFR
Hsiau et al (2011) ¹³ n = 46	Pediatric kidney (median age 14.7 yrs BPAR vs 13.8 yrs no BPAR)	1–12 mos posttransplant	Levels at least monthly (median 17.2 levels) Selective: excluded levels with concomitant diarrhea	4.3 yrs	Rejection (CV 53.4%) vs rejection-free (CV 30%)	↑ (BPAR)	--	--	--	--

(Continues)

TABLE 2 (Continued)

Author Year n	Population	CV measurement	Tacrolimus measurement	Follow-up	Study groups	High CV and outcomes				
						Rejection	dnDSA	Graft loss	Mortality	Other
Pizzo et al (2016) ⁵⁰ n = 23	Pediatric kidney (median age at transplant: 8 yrs adherent vs 14.1 yrs nonadherent)	6 mos before biopsy	≥ 4 levels (median 5 levels per biopsy) CMIA	6.3 yrs	Adherent (CV 41.1%) vs nonadherent (CV 48.5%)	↔ (BPAR)	↔	--	--	--
Prytula et al (2012) ⁵¹ n = 69	Pediatric kidney (median age at transplant: 10 yrs)	Over 12 mos (at least 3 mos after tacrolimus initiation)	Median 7 levels MEIA	Up to 4 yrs	Rejection (CV 48.7%) vs rejection-free (CV 32.9%)	↑ (Late AR)	--	↔	--	↔ eGFR
Solomon et al (2020) ⁵² n = 38	Pediatric kidney (median age 12.1 yrs at transplant)	3 mos posttransplant	Median 40 levels	3.4 yrs	Cut-points of 30%, 40%, and 50% (median 43.1%)	↔	↑	↔	--	--
Defrancq et al (2019) ⁵³ n = 41	Pediatric liver (median age at transplant 30 mos)	3 mos-5 yrs posttransplant	Dose- and weight-normalized CMIA Selective: excluded levels during first 3 mos of each year for years 2-5	5 yrs	Rejection or for-cause biopsy vs no outcome	↑ (BPAR)	↔	--	--	↔ CMV viremia
Riva et al (2018) ⁵⁴ n = 71	Pediatric liver (mean age 5.3 yrs)	7-10 days before outcome or median value during last month of follow-up	Dose-normalized CMIA	2 yrs	BPAR or adverse drug reaction vs no outcome	↔	--	--	--	--

Notes.: ↑ = increased risk; ↔ = no difference between groups; -- = not studied.

Abbreviations: AA, African Americans; ACR, acute cellular rejection; AMR, antibody mediated rejection; AR, acute rejection; BPAR, biopsy-proven acute rejection; CAV, cardiac allograft vasculopathy; CLAD, chronic lung allograft dysfunction; CMIA, chemiluminescent immunoassay; CMV, cytomegalovirus; CV, coefficient of variation; dnDSA, de novo donor specific antibodies; EA, European Americans; eGFR, estimated glomerular filtration rate; EMIT, Enzyme multiplied immunoassay technique; LC/MS, liquid chromatography with mass spectrometry; LC-MS/MS, liquid chromatography with tandem mass spectrometry; MEIA, microparticle enzyme immunoassay; ROC, receiver operating characteristic.

^aComposite end point consisting of graft loss, late biopsy-proven rejection, transplant glomerulopathy, or doubling of serum creatinine.

^bDefined as interstitial fibrosis and tubular atrophy score.

^cDefined as the sum of ci, ct, cg, cv, ah, and mm.

^dDefined as the sum of ci, ct, ah, cv, and cg.

^eTotal rejection score calculated according to ISHLT classification system as OR = 0, 1R = 1, 2R = 2, and 3R = 3, dividing the summed scores by the total number of biopsy specimens during the study period.

(Continues)

TABLE 2 (Continued)

TABLE 3 Summary of studies evaluating tacrolimus intrapatient variability defined by TTR on outcomes

Author Year N	Population	TTR measurement ^a	Tacrolimus measurement	Follow-up	Study groups	Low TTR and outcomes				
						Rejection	dnDSA	Graft Loss	Mortality	Other
Baker et al (2019) ⁵⁶ n = 67	Adult heart	0-30 days posttransplant	Levels daily during hospitalization, twice weekly at discharge Therapeutic range for TTR: 10-15 ng/ml	30 days	Rejection (TTR 31.4%) vs rejection-free (TTR 36.2%)	↔	--	--	↔	--
Ensor et al (2018) ⁵⁷ n = 292	Adult lung	0-12 mos posttransplant	Median 60-75 levels Therapeutic range for TTR: 12-15 ng/ml mos 0-6, 10-12 ng/ml mos 6-12	1 year	Low TTR defined as < 30% (median 20.7%)	↑ (any rejection, ACR, CLAD)	--	--	↑	↑ pulmonary infection
Kao et al (2020) ⁵⁸ n = 157	Adult lung	0-6 mos posttransplant	Median 40 levels CMIA Therapeutic range for TTR: 10-15 ng/ml	165 days	Rejection vs rejection-free (cohort mean TTR 46.8%)	↔	--	--	--	--
Song et al (2019) ⁵⁹ n = 1241	Adult kidney	0-12 mos posttransplant	EMIT Exclusive - excluded levels < 2 ng/ml or > 15 ng/ml if not valid Therapeutic range for TTR: 5-10 ng/ml mos 0-3, 4-8 ng/ml mos 4-12	41 mos	Low TTR defined as < 78%	↑	--	↑	↑	↑ infection
Davis et al (2018) ⁶⁰ n = 538	Adult kidney or simultaneous kidney-pancreas	0-12 mos posttransplant	All levels (median 19) CMIA Therapeutic range for TTR: 5-10 ng/ml	4.1 yrs	TTR < 60% or < 75%	↑	↑	↑	--	--
Davis et al (2020) ⁶¹ n = 538	Adult kidney or simultaneous kidney-pancreas Additional analysis to above study	0-12 mos posttransplant	All levels (median 19) CMIA Therapeutic range for TTR: 6-10 ng/ml	4.1 yrs	Low TTR defined as < 40% High CV defined as > 44.2% (highest quartile)	↑	↑	↑	--	--

Notes: ↑ = increased risk; ↔ = no difference between groups; -- = not studied.

Abbreviations: ACR, acute cellular rejection; BPAR, biopsy-proven acute rejection; CLAD, chronic lung allograft dysfunction; CMIA, chemiluminescent immunoassay; CV, coefficient of variation; dnDSA, de novo donor specific antibodies; EMIT, Enzyme multiplied immunoassay technique; TTR, time in therapeutic range.

^aMeasured using Rosendaal method.

tacrolimus troughs (<4 ng/ml to <5 ng/ml) as a risk factor for graft survival was observed in several studies.^{19,25,26,37} Patients with high CV due to subtherapeutic troughs and overall low tacrolimus exposure appear to be at highest risk for graft loss. Taken together, combining average tacrolimus trough and CV may provide better risk factor stratification for transplant recipients at risk of poor outcomes rather than either measure alone, but this must be evaluated in context of center-specific practices.

Liver

Three studies have evaluated CV and outcomes in adult liver transplant recipients.⁴²⁻⁴⁴ In a retrospective study utilizing tacrolimus levels collected within the first month posttransplant, CV greater than 40% was associated with 57% greater risk of graft loss at 1 year ($p = 0.002$). High CV was also associated with diminished patient and graft survival with up to 12 years follow-up. Although the multivariable analysis controlled for the higher MELD and Child-Pugh score at baseline, the high CV group also had more neurologic complications, cardiovascular complications, and acute renal failure requiring dialysis during the initial hospitalization.⁴² As proposed previously, a complicated postoperative course would be hypothesized to result in greater tacrolimus variability. Other studies in adult liver transplant recipients, calculating CV over the majority of the first year, have been unable to demonstrate similar associations with high CV and graft loss or patient mortality but support a relationship with acute rejection.^{43,44} In one study, CV greater than 35% was associated with a 3-fold increase in odds of BPAR ($p = 0.003$) and a 4-fold increase in formation of dnDSA at 2 years posttransplant ($p = 0.001$).⁴³ Another group noted a numerical increase in late acute and chronic rejection in patients with CV greater than 28% compared with CV less than 28% (24.4% vs 18.5%, $p = 0.068$).⁴⁴

Cutoffs to define high CV appear to be higher in liver transplant recipients compared with the kidney transplant population. In liver transplant, poor outcomes may not present until relatively high CV, such as greater than 35 to greater than 40%.^{42,43} Potentially, the reduced immunogenicity of the liver may offer protection from poor outcomes related to tacrolimus variability.⁴⁵

Heart

Two studies reported varying effects of CV and outcomes in adult heart transplant recipients.^{46,47} One study observed an 8-fold increased risk for rejection ($p = 0.011$) in those with CV greater than 28.8%, as well as increased rejection severity. The difference was seen only with rejection episodes occurring after 1 year posttransplant; there was no difference between groups in rejection frequency between 3 and 12 months posttransplant. Oppositely, Shuker et al did not find a difference in proportion of patients who experienced acute rejection or cardiac allograft vasculopathy at 4 years posttransplant based on CV measurements.⁴⁷ However, the high CV group was defined by CV greater than 17.7% (group CV median 22.6%), which may have been too low to determine a difference in outcomes.

Pediatrics

Elevated CV has been associated with increased risk of rejection and dnDSA formation in pediatric kidney transplant recipients.^{13,48-52} Median CV in patients with BPAR has ranged from 44-53%, compared with 24-33% in nonrejecters.^{13,48,51} Authors have attempted to identify a CV cutoff for poor allograft outcomes with results ranging 31-41%.^{13,49,50} There are several differences between studies worth highlighting. One study began CV measurement at 1 month posttransplant and therefore may be subject to an overall increased variability.¹³ Others elected to measure CV at 6 or 12 months prior to rejection and generally identified lower CV cutoffs (31-44%).^{48,50} Findings from the studies suggest overall CV may be higher in pediatrics but share the same trend seen in adults.

Tacrolimus CV has also been predictive of rejection in pediatric liver transplant recipients.⁵³ In young liver recipients, CV was significantly higher in patients with BPAR compared with no BPAR (56.7% vs 40.9%, respectively, $p = 0.04$) at 1 year posttransplant. These findings did not persist beyond 1 year posttransplant, possibly related to the overall median CV decrease seen over time from 41.6% at 1 year and 30.9% at 2 years to 28.5% at 3 years.⁵³ Similar findings were not seen by Riva et al when evaluating BPAR within 2 years posttransplant in pediatric liver recipients, likely due to limiting the CV calculation to tacrolimus troughs 7-10 days prior to BPAR diagnosis.⁵⁴

3.1.3 | Time in therapeutic range

As TTR was recently introduced as a tool to evaluate tacrolimus IPV, fewer studies are available for TTR. Time in therapeutic range (TTR) is calculated using the Rosendaal method, which assumes a linear relationship between values to calculate the percentage of time in range.⁵⁵

Heart and lungs

In adult heart transplant recipients, early TTR during the first 30 days posttransplant was similar among patients who did and did not experience rejection (31.4% vs 36.2%, $p = 0.512$), respectively.⁵⁶ Similar to SD and CV, TTR in the early posttransplant period is likely to have limited utility in predicting transplant outcomes. In lung transplant recipients, every 10% increase in TTR was inversely related to rate of rejection, high-grade acute cellular rejection, CLAD, mortality, and infection at 1 year posttransplant.⁵⁷ Recently, a second study in lung transplant recipients failed to find an association between TTR and acute rejection.⁵⁸ Comparison of these two studies highlights the number of variables related to the risk and diagnosis of immune-mediated outcomes that will complicate establishing TTR targets across centers, such as induction therapy, goal trough concentration range, and frequency of protocol biopsies.

Kidneys

A recent study in adult kidney transplant recipients also identified an association between TTR less than 78% and risk of rejection, graft

loss, mortality, and infection.⁵⁹ Davis et al conducted two analyses within a single group of adult kidney transplant recipients utilizing TTR and CV.^{60,61} The first analysis used a cutoff of TTR less than 60% to identify high-risk patients based on warfarin literature. TTR less than 60% was associated with increased risk of dnDSA and acute rejection at 12 months posttransplant. Likewise, increased death-censored graft loss was seen at 5 years in those with a TTR less than 60%.⁶⁰ The second analysis utilized a TTR threshold of 40% based on receiver operating curve analysis and observed similar dnDSA, acute rejection, and death-censored graft loss risk. Authors then compared TTR and CV for the same outcomes in a 2 × 2 design. Among patients with high CV, those with low TTR had significantly higher risk for dnDSA, acute rejection, and death-censored graft loss compared with high TTR. Among patients with high TTR, outcomes were not significantly different when comparing those with low and high CV.⁶¹ These results suggest combining IPV measures may offer stronger predictive value, however, further studies in this area are necessary.

3.2 | Interventions to reduce tacrolimus inpatient variability

The association between elevated tacrolimus IPV and transplant outcomes has been established in numerous studies. Theoretically, reducing IPV through controlling sources of variation may improve long-term outcomes. Potential sources of tacrolimus variability have been described previously.⁴ Briefly, sources of variability are thought to include food effects, drug interactions, diarrheal illness, laboratory assay, iatrogenic variability, and nonadherence. Several small, prospective trials have evaluated interventions to reduce tacrolimus IPV primarily targeting adherence through educational or technological programs.

The conversion of immediate-release tacrolimus (Tac-IR) to once-daily extended-release formulations of tacrolimus (Astagraf; Tac-ER or Envarsus; LCP-Tac) has had varying effects on IPV. Several authors have demonstrated a significantly lower IPV with Tac-ER compared with Tac-IR in kidney transplant recipients.^{33,62,63} The effect of formulation change on tacrolimus IPV may depend on baseline variability of patients. Shuker et al did not find an overall improvement in CV with conversion from Tac-IR to Tac-ER (17.3% vs 16.4%, $p = 0.31$, respectively). When only patients with high baseline variability (CV >17.9%) were considered, this subgroup demonstrated a significant improvement in CV after conversion from Tac-IR to Tac-ER (25.6% vs 17.1%, $p = 0.01$, respectively).³⁴ Potentially, the high CV group was reflective of those with medication nonadherence that benefited from once-daily dosing. This hypothesis aligns with another study where formulation change did not reduce CV in a population with a low baseline CV (15.3% on Tac-IR to 13.7% on Tac-ER, $p = 0.2$).³³ There has also been a report of increased CV after conversion from Tac-IR to LCP-Tac.⁶⁴ The observed variability of LCP-Tac is counterintuitive but likely reflects iatrogenic variability due to provider unfamiliarity with new products.

The impact of pharmacist education on CV in 126 adult kidney transplant recipients was investigated by Bessa et al. Participants were randomized to receive standard instructions by nursing staff only or pharmacist education in addition to standard nursing instructions. At 90 days posttransplant, there was no difference in mean CV between groups (32.5% control vs 31.4% pharmacist education, $p = 0.673$). Likewise, mean tacrolimus troughs and clinical outcomes were similar between groups.⁶⁵ Although early pharmacist education did not appear to influence CV in adult kidney transplant recipients, the long-term effect of this intervention remains unknown. Because medication adherence is expected to be high during the time frame of this study but drift over time, educational interventions to improve IPV through adherence may be better employed later in the posttransplant course.⁶⁶

Two groups reported implementation of tacrolimus CV reports in ambulatory care settings as a patient monitoring and risk assessment tool.^{67,68} Cheng et al instituted an online CV reporting system at an outpatient clinic. Based on tacrolimus CV 183 adult kidney transplant recipients were stratified into two risk groups: high-risk group (CV >30%) and alert group (CV 22–30%). Six months after implementation of the online reporting tool, significant decreases in CV were observed in both the high-risk group (median 41% to 25%, $p < 0.001$) and the alert group (median 26% to 20%, $p = 0.003$). Unfortunately, the authors did not describe the actions taken by the transplant team in the setting of an elevated CV.⁶⁸ Kaiser et al also describe implementation of an automated tacrolimus IPV report as a longitudinal monitoring tool.⁶⁷ Instant online reporting of tacrolimus IPV appears to be a simple way to identify high-risk patients that may allow targeted interventions to improve tacrolimus IPV.

A pilot program utilizing cognitive behavioral therapy and motivational interviewing was implemented in adult kidney transplant recipients with less than 98% adherence as determined by pill counts. Thirty-three adults were randomized to receive the intervention or standard of care. Mean tacrolimus troughs were similar between groups at study completion; however, there was a decrease in SD in the intervention arm (2.8% to 1.8%, $p < 0.05$) but not in the control arm (3.5% to 3.5%, $p > 0.05$).⁶⁹

Finally, mobile technology been investigated to improve adherence and IPV. Levine et al utilized Transplant Hero, a transplant mobile app, as an interactive alarm and educational tool in kidney, pancreas, and/or liver transplant recipients. Participants were randomized to receive the mobile app, both the app and a smart watch, or neither. Tacrolimus CV was not different between groups at 1 month (30.4% mobile app vs 35.5% both vs 31.7% neither, $p = 0.96$) or 3 months posttransplant (33.0% mobile app vs 33.8% both vs 32.8% neither, $p = 0.81$).⁷⁰ These results may be due to the close proximity to time of transplant. A similar study showed a significant reduction in tacrolimus CV among Transplant Hero users compared with nonusers at 1 month (27.7% vs 37.0%, $p = 0.014$) but not at 3 months (33.6% vs 35.4%, $p = 0.63$) suggesting the need to investigate the impact of attrition.⁷¹ Jung et al evaluated the use of text message and pill box alarms to improve unintentional forgetfulness among kidney transplant recipients. No difference in tacrolimus CV

was observed between those randomized to receive the intervention compared to control (23.9% vs 25.1, $p = 0.645$, respectively).⁷² Notably, outcomes should be interpreted in the context of high adherence (>98%) observed within both arms throughout the 6 month study period. Finally, McGillicuddy et al evaluated use of an mHealth app and electronic pillbox in adult kidney transplant recipients with poor medication adherence. Eighty participants were randomized to the mobile health intervention or control at mean 2 years posttransplant. Tacrolimus CV after intervention was significantly lower in the intervention group compared with the control group ($p = 0.046$). There was also a significant reduction in tacrolimus CV in patients with CV less than 40% ($p = 0.001$) in conjunction with an improvement in medication adherence as determined by electronic pillbox use ($p < 0.001$).⁷³ Mobile health techniques to reduce IPV through improved adherence have had mixed results, but application of such interventions may benefit tech savvy patients or patients with low baseline adherence but confirmation from additional studies is necessary. Further, additional studies should investigate the impact of mobile health technology later into the posttransplant course when medication nonadherence is often a larger concern.

4 | DISCUSSION

Available data support positive associations between tacrolimus IPV and worse outcomes in transplant recipients, although results were not consistent across all organs and age groups evaluated. Currently, there are no randomized controlled trials evaluating tacrolimus IPV-directed interventions to improve patient and graft outcomes. In the absence of such data, we provide the following recommendations when considering how to utilize IPV in solid organ transplant recipients.

Based on the extent of literature evaluating CV, ease of calculation, and standardization for the scale of the dataset, we agree with previous recommendations that CV is the best supported IPV metric for clinical use.^{5,6} Considering CV within a highly adherent population approximated 15%; CV greater than 15% indicates a potential risk for poor outcomes. To identify high-risk patients, clinicians could consider a CV cutoff of 30% based on available data in the adult kidney transplant population. Regarding other measures of variability, identifying a definitive cutoff is challenging due to center differences in tacrolimus therapeutic windows. Future research should evaluate CV cutoffs among non-adult and non-kidney transplant recipients. It is possible that the extent of variability may be larger before becoming clinically significant among certain populations (e.g., liver transplant recipients or pediatric recipients), but current data are not yet strong enough to support differentiation. Another area for future research is the opportunity to improve predictive value through combination of CV with TTR or tacrolimus trough concentration. IPV measures are unable to discriminate variability due to subtherapeutic or supratherapeutic levels. TTR offers the promising advantage of evaluating variability relative to the therapeutic target and merits further research. However, establishing TTR goals will

require appreciation of the therapeutic tacrolimus window and a universal TTR goal will be unlikely. Alternatively, IPV may be evaluated in the context of tacrolimus exposure, measured by tacrolimus trough concentration. This method has been previously proposed to identify kidney transplant recipients at high risk of developing dnDSA.⁷⁴

Measures of IPV appear to be of greatest predictive potential when applied at least 3 to 6 months posttransplant. After this time period, IPV likely better reflects patient behaviors and clinical conditions of interest. Others have recommended measuring IPV between 6 and 12 months posttransplant due to the limited data outside this time period.^{5,6} Prior to this period, achieving therapeutic tacrolimus troughs should be the focus to optimize outcomes. Similarly, the clinical utility of IPV after 1–2 years posttransplant is not well established.

There are other logistical aspects to consider for IPV measurements. No data exist to suggest a minimum number of levels for best predictability. A common approach in studies has been to require at least 3 levels but final calculations have generally consisted of a median of 5–15 levels over a 6–12-month time period. We recommend no less than three levels when calculating IPV and ideally at least one level per month, to best replicate available literature. Additionally, we recommend the use of only outpatient levels due to the added variability anticipated within the inpatient setting.^{5,6} We also urge clinicians to be cautious when calculating and interpreting IPV. Several scenarios may introduce unintentional variability to the IPV calculation, such as tacrolimus concentrations not representative of a “true” trough, alterations in a patient’s goal trough concentration, and changes in laboratory assay.

Finally, utilizing IPV as a direct surrogate for medication nonadherence (MNA) should be avoided and investigations to reduce IPV should incorporate measures to confirm MNA. Previous reviews have concluded that MNA is a primary determinant of elevated IPV and correspondingly IPV is capable of serving as a proxy to identify tacrolimus nonadherence.^{5,6} Although IPV is theoretically an attractive strategy to objectively evaluate MNA, this claim is made without proper prospective validation. Arguments rely heavily on the findings of Leino et al, which demonstrated that median CV was lower in an adherent population than in observational cohorts. However, such arguments often fail to recognize other differences in the study population, including the clinical stability of the patients, prohibition of dose changes including changes to potentially interacting medications, and calculation of CV on a weekly basis using daily troughs.³² All of these factors could reasonably reduce IPV by altering sources of variability particularly those that are time dependent. For example, the number of dose changes has previously been associated with increased IPV.^{18,21} Increased frequency of dose changes could be a manifestation of multiple issues; most interesting is the role of iatrogenic variability arising from the limited ability to forecast the impact of dose changes on trough concentration. Several enhanced dosing models have demonstrated improvements in IPV and suggest computer-assisted dosing, capable of accounting for higher levels of clinical complexity, is another area to target for intervention.^{75–77}

Further, the understanding of additional sources of tacrolimus variability continues to grow with recent evidence supporting a role for the microbiome and inflammation.^{78,79}

Retrospective studies utilizing physician records, patient report, or clinic nonattendance to define MNA have not consistently supported a relationship between MNA and IPV.^{15,28,50,53} Conflicting results have also been observed among prospective studies assessing MNA using electronic monitoring or rigorous multimodal approaches.^{65,73,80–82} Although some discordance may be related to data quality pertaining to the method(s) of defining MNA or small patient population, clinicians must evaluate IPV in a patient-specific context, including all other possible sources of IPV. Further, most of the evidence supporting an association between MNA and high IPV is on a population level relying on differences in mean or median IPV values. Little evidence exists applying IPV to the individual. Evaluation of the studies directly evaluating MNA and IPV reveals a wide, overlapping range of IPV values among both adherent and nonadherent patients. These data suggest IPV possesses low sensitivity and specificity for identifying nonadherence in a particular patient. Clinicians should be aware that although an increased IPV may be associated with MNA, MNA is not the sole cause of IPV and elevated IPV will not capture all nonadherent patients.

5 | CONCLUSION

High tacrolimus IPV has been associated with poor outcomes in various organ transplant recipients. Variation in tacrolimus troughs can be related to a number of modifiable sources. Several novel interventions to reduce tacrolimus IPV have been piloted, including pharmacist education, cognitive behavioral therapy, online CV reporting, and technology to support medication use. A direct relationship between interventions that improve IPV and outcomes has yet to be established. At this time, in clinical practice, IPV should be limited to an additional screening tool to identify patients at increased risk for negative outcomes. The cause of IPV should be carefully evaluated and not assumed to be related to MNA without further investigation. Moving forward, this area of research would benefit from standardization of IPV metrics as a predictor of transplant outcomes and potential area for intervention.

CONFLICTS OF INTEREST

The authors declare no conflicts of interest.

ORCID

Lauren Schumacher  <https://orcid.org/0000-0002-0526-2865>

Abbie D. Leino  <https://orcid.org/0000-0003-4310-4697>

Jeong M. Park  <https://orcid.org/0000-0002-7961-494X>

REFERENCES

- Ong SC, Gaston RS. Thirty years of tacrolimus in clinical practice. *Transplantation*. 2020. <https://doi.org/10.1097/TP.0000000000003350>
- Vanhove T, Annaert P, Kuypers DR. Clinical determinants of calcineurin inhibitor disposition: a mechanistic review. *Drug Metab Rev*. 2016;48(1):88–112.
- Brunet M, van Gelder T, Asberg A, et al. Therapeutic drug monitoring of tacrolimus-personalized therapy: second consensus report. *Ther Drug Monit*. 2019;41(3):261–307.
- Shuker N, van Gelder T, Hesselink DA. Intra-patient variability in tacrolimus exposure: causes, consequences for clinical management. *Transplant Rev (Orlando)*. 2015;29(2):78–84.
- Kuypers DRJ. Inpatient variability of tacrolimus exposure in solid organ transplantation: a novel marker for clinical outcome. *Clin Pharmacol Ther*. 2020;107(2):347–358.
- Gonzales HM, McGillicuddy JW, Rohan V, et al. A comprehensive review of the impact of tacrolimus inpatient variability on clinical outcomes in kidney transplantation. *Am J Transplant*. 2020;20(8):1969–1983.
- Shemesh E, Shneider BL, Savitzky JK, et al. Medication adherence in pediatric and adolescent liver transplant recipients. *Pediatrics*. 2004;113(4):825–832.
- Venkat VL, Nick TG, Wang Y, Bucuvalas JC. An objective measure to identify pediatric liver transplant recipients at risk for late allograft rejection related to non-adherence. *Pediatr Transplant*. 2008;12(1):67–72.
- Shemesh E, Bucuvalas JC, Anand R, et al. The Medication Level Variability Index (MLVI) predicts poor liver transplant outcomes: a prospective multi-site study. *Am J Transplant*. 2017;17(10):2668–2678.
- Shemesh E, Duncan S, Anand R, et al. Trajectory of adherence behavior in pediatric and adolescent liver transplant recipients: The medication adherence in children who had a liver transplant cohort. *Liver Transpl*. 2018;24(1):80–88.
- Pollock-Barziv SM, Finkelstein Y, Manlhiot C, et al. Variability in tacrolimus blood levels increases the risk of late rejection and graft loss after solid organ transplantation in older children. *Pediatr Transplant*. 2010;14(8):968–975.
- de Oliveira JTP, Kieling CO, da Silva AB, et al. Variability index of tacrolimus serum levels in pediatric liver transplant recipients younger than 12 years: non-adherence or risk of non-adherence? *Pediatr Transplant*. 2017;21(8). <https://doi.org/10.1111/ptr.13058>
- Hsiao M, Fernandez HE, Gjertson D, Ettenger RB, Tsai EW. Monitoring nonadherence and acute rejection with variation in blood immunosuppressant levels in pediatric renal transplantation. *Transplantation*. 2011;92(8):918–922.
- Christina S, Annunziato RA, Schiano TD, et al. Medication level variability index predicts rejection, possibly due to non-adherence, in adult liver transplant recipients. *Liver Transpl*. 2014;20(10):1168–1177.
- Lieber SR, Volk ML. Non-adherence and graft failure in adult liver transplant recipients. *Dig Dis Sci*. 2013;58(3):824–834.
- Sapir-Pichhadze R, Wang Y, Famure O, Li Y, Kim SJ. Time-dependent variability in tacrolimus trough blood levels is a risk factor for late kidney transplant failure. *Kidney Int*. 2014;85(6):1404–1411.
- Gallagher HM, Sarwar G, Tse T, et al. Erratic tacrolimus exposure, assessed using the standard deviation of trough blood levels, predicts chronic lung allograft dysfunction and survival. *J Heart Lung Transplant*. 2015;34(11):1442–1448.
- Borra LC, Roodnat JI, Kal JA, Mathot RA, Weimar W, van Gelder T. High within-patient variability in the clearance of tacrolimus is a risk factor for poor long-term outcome after kidney transplantation. *Nephrol Dial Transplant*. 2010;25(8):2757–2763.
- Seibert SR, Schladt DP, Wu B, et al. Tacrolimus trough and dose intra-patient variability and CYP3A5 genotype: Effects on acute rejection and graft failure in European American and African American kidney transplant recipients. *Clin Transplant*. 2018;32(12):e13424.

20. Israni AK, Riad SM, Leduc R, et al. Tacrolimus trough levels after month 3 as a predictor of acute rejection following kidney transplantation: a lesson learned from DeKAF Genomics. *Transpl Int*. 2013;26(10):982–989.
21. Rozen-Zvi B, Schneider S, Lichtenberg S, et al. Association of the combination of time-weighted variability of tacrolimus blood level and exposure to low drug levels with graft survival after kidney transplantation. *Nephrol Dial Transplant*. 2017;32(2):393–399.
22. Gueta I, Markovits N, Yarden-Bilavsky H, et al. Inpatient variability in tacrolimus trough levels after solid organ transplantation varies at different postoperative time periods. *Am J Transplant*. 2019;19(2):611.
23. Richards KR, Hager D, Muth B, Astor BC, Kaufman D, Djmalali A. Tacrolimus trough level at discharge predicts acute rejection in moderately sensitized renal transplant recipients. *Transplantation*. 2014;97(10):986–991.
24. Borobia AM, Romero I, Jimenez C, et al. Trough tacrolimus concentrations in the first week after kidney transplantation are related to acute rejection. *Ther Drug Monit*. 2009;31(4):436–442.
25. Whalen HR, Glen JA, Harkins V, et al. High inpatient tacrolimus variability is associated with worse outcomes in renal transplantation using a low-dose tacrolimus immunosuppressive regime. *Transplantation*. 2017;101(2):430–436.
26. Huang CT, Shu KH, Ho HC, Wu MJ. Higher variability of tacrolimus trough level increases risk of acute rejection in kidney transplant recipients. *Transpl Proc*. 2016;48(6):1978–1980.
27. Shuker N, Shuker L, van Rosmalen J, et al. A high inpatient variability in tacrolimus exposure is associated with poor long-term outcome of kidney transplantation. *Transpl Int*. 2016;29(11):1158–1167.
28. Goodall DL, Willicombe M, McLean AG, Taube D. High inpatient variability of tacrolimus levels and outpatient clinic nonattendance are associated with inferior outcomes in renal transplant patients. *Transplant Direct*. 2017;3(8):e192.
29. Taber DJ, Su Z, Fleming JN, et al. Tacrolimus trough concentration variability and disparities in African American kidney transplantation. *Transplantation*. 2017;101(12):2931–2938.
30. Sharma A, Cherukuri A, Mehta RB, Sood P, Hariharan S. High calcineurin inhibitor inpatient variability is associated with renal allograft inflammation, chronicity, and graft loss. *Transplant Direct*. 2019;5(2):e424.
31. Scheel J, Reber S, Stoessel L, et al. Patient-reported non-adherence and immunosuppressant trough levels are associated with rejection after renal transplantation. *BMC Nephrol*. 2017;18(1):107.
32. Leino AD, King EC, Jiang W, et al. Assessment of tacrolimus inpatient variability in stable adherent transplant recipients: establishing baseline values. *Am J Transplant*. 2019;19(5):1410–1420.
33. Stiff F, Stolk LM, Undre N, van Hooff JP, Christiaans MH. Lower variability in 24-hour exposure during once-daily compared to twice-daily tacrolimus formulation in kidney transplantation. *Transplantation*. 2014;97(7):775–780.
34. Shuker N, Cadogan M, Van Gelder T, et al. Conversion from twice-daily to once-daily tacrolimus does not reduce inpatient variability in tacrolimus exposure. *Ther Drug Monit*. 2015;37(2):262–269.
35. Mo H, Kim SY, Min S, et al. Association of inpatient variability of tacrolimus concentration with early deterioration of chronic histologic lesions in kidney transplantation. *Transplant Direct*. 2019;5(6):e455.
36. Vanhove T, Vermeulen T, Annaert P, Lerut E, Kuypers DRJ. High inpatient variability of tacrolimus concentrations predicts accelerated progression of chronic histologic lesions in renal recipients. *Am J Transplant*. 2016;16(10):2954–2963.
37. O'Regan JA, Canney M, Connaughton DM, et al. Tacrolimus trough-level variability predicts long-term allograft survival following kidney transplantation. *J Nephrol*. 2016;29(2):269–276.
38. Rodrigo E, Segundo DS, Fernandez-Fresnedo G, et al. Within-patient variability in tacrolimus blood levels predicts kidney graft loss and donor-specific antibody development. *Transplantation*. 2016;100(11):2479–2485.
39. Susal C, Dohler B. Late intra-patient tacrolimus trough level variability as a major problem in kidney transplantation: a Collaborative Transplant Study Report. *Am J Transplant*. 2019;19(10):2805–2813.
40. Rahamimov R, Tifti-Orbach H, Zingerman B, et al. Reduction of exposure to tacrolimus trough level variability is associated with better graft survival after kidney transplantation. *Eur J Clin Pharmacol*. 2019;75(7):951–958.
41. Sablik KA, Clahsen-van Groningen MC, Hesselink DA, van Gelder T, Betjes MGH. Tacrolimus intra-patient variability is not associated with chronic active antibody mediated rejection. *PLoS One*. 2018;13(5):e0196552.
42. Rayar M, Tron C, Jezequel C, et al. High inpatient variability of tacrolimus exposure in the early period after liver transplantation is associated with poorer outcomes. *Transplantation*. 2018;102(3):e108–e114.
43. Del Bello A, Congy-Jolivet N, Danjoux M, et al. High tacrolimus intra-patient variability is associated with graft rejection, and de novo donor-specific antibodies occurrence after liver transplantation. *World J Gastroenterol*. 2018;24(16):1795–1802.
44. van der Veer MAA, Nangrahy N, Hesselink DA, et al. High inpatient variability in tacrolimus exposure is not associated with immune-mediated graft injury after liver transplantation. *Transplantation*. 2019;103(11):2329–2337.
45. Benseler V, McCaughan GW, Schlitt HJ, Bishop GA, Bowen DG, Bertolino P. The liver: a special case in transplantation tolerance. *Semin Liver Dis*. 2007;27(2):194–213.
46. Gueta I, Markovits N, Yarden-Bilavsky H, et al. High tacrolimus trough level variability is associated with rejections after heart transplant. *Am J Transplant*. 2018;18(10):2571–2578.
47. Shuker N, Bouamar R, Hesselink DA, et al. Inpatient variability in tacrolimus exposure does not predict the development of cardiac allograft vasculopathy after heart transplant. *Exp Clin Transplant*. 2018;16(3):326–332.
48. Abu Bakar K, Mohamad NA, Hodi Z, et al. Defining a threshold for tacrolimus intra-patient variability associated with late acute cellular rejection in paediatric kidney transplant recipients. *Pediatr Nephrol*. 2019;34(12):2557–2562.
49. Kaya Aksoy G, Comak E, Koyun M, et al. Tacrolimus variability: a cause of donor-specific anti-HLA antibody formation in children. *Eur J Drug Metab Pharmacokinet*. 2019;44(4):539–548.
50. Pizzo HP, Ettenger RB, Gjertson DW, et al. Sirolimus and tacrolimus coefficient of variation is associated with rejection, donor-specific antibodies, and nonadherence. *Pediatr Nephrol*. 2016;31(12):2345–2352.
51. Prytula AA, Bouts AH, Mathot RA, et al. Intra-patient variability in tacrolimus trough concentrations and renal function decline in pediatric renal transplant recipients. *Pediatr Transplant*. 2012;16(6):613–618.
52. Solomon S, Colovai A, Del Rio M, Hayde N. Tacrolimus variability is associated with de novo donor-specific antibody development in pediatric renal transplant recipients. *Pediatr Nephrol*. 2020;35(2):261–270.
53. Defrancq C, De Wilde N, Raes A, et al. Intra-patient variability in tacrolimus exposure in pediatric liver transplant recipients: evolution, risk factors, and impact on patient outcomes. *Pediatr Transplant*. 2019;23(3):e13388.
54. Riva N, Dip M, Halac E, et al. Survival time to biopsy-proven acute rejection and tacrolimus adverse drug reactions in pediatric liver transplantation. *Ther Drug Monit*. 2018;40(4):401–410.
55. Rosendaal FR, Cannegieter SC, van der Meer FJ, Briet E. A method to determine the optimal intensity of oral anticoagulant therapy. *Thromb Haemost*. 1993;69(3):236–239.
56. Baker WL, Steiger S, Martin S, et al. Association between time-in-therapeutic tacrolimus range and early rejection after heart transplant. *Pharmacotherapy*. 2019;39(5):609–613.

57. Ensor CR, lasella CJ, Harrigan KM, et al. Increasing tacrolimus time-in-therapeutic range is associated with superior one-year outcomes in lung transplant recipients. *Am J Transplant.* 2018;18(6):1527–1533.
58. Kao CC, Segraves J, Parulekar AD. Tacrolimus monitoring parameters are not associated with acute cellular rejection following lung transplantation. *Eur J Clin Pharmacol.* 2020. <https://doi.org/10.1007/s00228-020-02976-z>
59. Song T, Yin S, Jiang Y, et al. Increasing time in therapeutic range of tacrolimus in the first year predicts better outcomes in living-donor kidney transplantation. *Front Immunol.* 2019;10:2912.
60. Davis S, Gralla J, Klem P, et al. Lower tacrolimus exposure and time in therapeutic range increase the risk of de novo donor-specific antibodies in the first year of kidney transplantation. *Am J Transplant.* 2018;18(4):907–915.
61. Davis S, Gralla J, Klem P, Stites E, Wiseman A, Cooper JE. Tacrolimus inpatient variability, time in therapeutic range, and risk of de novo donor-specific antibodies. *Transplantation.* 2020;104(4):881–887.
62. Wu MJ, Cheng CY, Chen CH, et al. Lower variability of tacrolimus trough concentration after conversion from prograf to advagraf in stable kidney transplant recipients. *Transplantation.* 2011;92(6):648–652.
63. Kurnatowska I, Krawczyk J, Oleksik T, Nowicki M. Tacrolimus dose and blood concentration variability in kidney transplant recipients undergoing conversion from twice daily to once daily modified release tacrolimus. *Transplant Proc.* 2011;43(8):2954–2956.
64. January SHT, Hagopian J, Carthon C, Gharabagi A, Delos Santos R. Impact of tacrolimus formulation on tacrolimus level coefficient of variations [Abstract]. *Am J Transplant.* 2019;19 (suppl 3). <https://atcmeetingabstracts.com/abstract/impact-of-tacrolimus-formulation-on-tacrolimus-level-coefficient-of-variations/>.
65. Bessa AB, Felipe CR, Hannun P, et al. Prospective randomized trial investigating the influence of pharmaceutical care on the intra-individual variability of tacrolimus concentrations early after kidney transplant. *Ther Drug Monit.* 2016;38(4):447–455.
66. De Geest S, Burkhalter H, Bogert L, Berben L, Glass TR, Denhaerynck K. Describing the evolution of medication nonadherence from pretransplant until 3 years post-transplant and determining pretransplant medication nonadherence as risk factor for post-transplant nonadherence to immunosuppressives: the Swiss Transplant Cohort Study. *Transpl Int.* 2014;27(7):657–666.
67. TE Kaiser EN, Tremblay S, Parrish NJ, et al. Performance improvement initiative: ambulatory tool to improve tacrolimus inpatient variability (IPV) monitoring in kidney & liver transplant recipients [Abstract]. *Am J Transplant.* 2019;19 (suppl 3).
68. Cheng CY, Wu MJ, Lin CC, Hou YC, Liou WS. Intervention of on-line percent coefficient of variation reporting system reduces the variability of tacrolimus trough concentration in kidney transplant recipients. *Transpl Proc.* 2018;50(8):2401–2403.
69. Cukor D, Ver Halen N, Pencille M, Tedla F, Salifu M. A pilot randomized controlled trial to promote immunosuppressant adherence in adult kidney transplant recipients. *Nephron.* 2017;135(1):6–14.
70. Levine D, Torabi J, Choinski K, Rocca JP, Graham JA. Transplant surgery enters a new era: Increasing immunosuppressive medication adherence through mobile apps and smart watches. *Am J Surg.* 2019;218(1):18–20.
71. Torabi J, Choinski K, Courson A, Zanetti-Yabur A, Rocca JP, Graham JA. Letter to the Editor: Mobile technology can improve adherence and lessen tacrolimus variability in patients receiving kidney transplants. *Ochsner J.* 2017;17(3):218–219.
72. Jung HY, Jeon Y, Seong SJ, et al. ICT-based adherence monitoring in kidney transplant recipients: a randomized controlled trial. *BMC Med Inform Decis Mak.* 2020;20(1):105.
73. McGillicuddy JW, Chandler JL, Sox LR, Taber DJ. Exploratory analysis of the impact of an mHealth medication adherence intervention on tacrolimus trough concentration variability: post hoc results of a randomized controlled trial. *Ann Pharmacother.* 2020;54(12):1185–1193.
74. Mendoza Rojas A, Hesselink DA, van Besouw NM, Baan CC, van Gelder T. Impact of low tacrolimus exposure and high tacrolimus intra-patient variability on the development of de novo anti-HLA donor-specific antibodies in kidney transplant recipients. *Expert Rev Clin Immunol.* 2019;15(12):1323–1331.
75. Kim J, Wilson S, Undre NA, Shi F, Kristy RM, Schwartz JJ. A Novel, dose-adjusted tacrolimus trough-concentration model for predicting and estimating variance after kidney transplantation. *Drugs in R and D.* 2019;19(2):201–212.
76. Zarrinpar A, Lee DK, Silva A, et al. Individualizing liver transplant immunosuppression using a phenotypic personalized medicine platform. *Sci Transl Med.* 2016;8:333ra49.
77. Størset E, Åsberg A, Skauby M, et al. Improved tacrolimus target concentration achievement using computerized dosing in renal transplant recipients—a prospective. Randomized Study. *Transplantation.* 2015;99(10):2158–2166.
78. Zheng Y, Masand A, Wagner M, et al. Identification of antibiotic administration as a potentially novel factor associated with tacrolimus trough variability in kidney transplant recipients: a preliminary study. *Transplant Direct.* 2019;5(9):e485.
79. Bonneville E, Gautier-Veyret E, Ihl C, et al. Unexpected overdose blood concentration of tacrolimus: Keep in mind the role of inflammation. *Br J Clin Pharmacol.* 2020;86(9):1888–1891.
80. Gokoel SRM, Zwart TC, Moes D, van der Boog PJM, de Fijter JW. No apparent influence of non-adherence on tacrolimus intra-patient variability in stable kidney transplant recipients. *Ther Drug Monit.* 2020;42:702–709.
81. Gustavsen MT, Midtvedt K, Lønning K, et al. Evaluation of tools for annual capture of adherence to immunosuppressive medications after renal transplantation - a single-centre open prospective trial. *Transpl Int.* 2019;32(6):614–625.
82. Lieb M, Hepp T, Schiffer M, Opgenoorth M, Erim Y. Accuracy and concordance of measurement methods to assess non-adherence after renal transplantation - a prospective study. *BMC Nephrol.* 2020;21(1):114.

How to cite this article: Schumacher L, Leino AD, Park JM. Tacrolimus inpatient variability in solid organ transplantation: A multiorgan perspective. *Pharmacotherapy.* 2021;41:103–118. <https://doi.org/10.1002/phar.2480>