

## Immune Checkpoint Inhibitors in Advanced Upper and Lower Tract Urothelial Carcinoma: A Comparison of Outcomes

Stepan M. Esagian MD<sup>1\*</sup>, Ali Raza Khaki MD<sup>2,3\*</sup>, Leonidas N. Diamantopoulos MD<sup>4</sup>, Lucia Carril-Ajuria MD<sup>5</sup>, Daniel Castellano MD<sup>5</sup>, Ivan De Kouchkovsky MD<sup>6</sup>, Joseph J. Park MD<sup>7</sup>, Ajjai Alva MD<sup>7</sup>, Mehmet A. Bilen MD<sup>8</sup>, Tyler F. Stewart MD<sup>9</sup>, Rana R. McKay MD<sup>9</sup>, Victor S. Santos MD<sup>10</sup>, Neeraj Agarwal<sup>10</sup>, Jayanshu Jain MD<sup>11</sup>, Yousef Zakharia MD<sup>12</sup>, Rafael Morales-Barrera MD<sup>13</sup>, Michael E. Devitt MD<sup>14</sup>, Ariel Nelson MD<sup>15,16</sup>, Christopher J. Hoimes DO<sup>15,17</sup>, Evan Shreck MD<sup>18</sup>, Benjamin A. Gartrell MD<sup>18</sup>, Alex Sankin MD<sup>18</sup>, Abhishek Tripathi MD<sup>19</sup>, Roubini Zakopoulou MD, PhD<sup>20</sup>, Aristotelis Bamias MD, PhD<sup>21</sup>, Alejo Rodriguez-Vida MD, PhD<sup>22</sup>, Alexandra Drakaki MD<sup>23</sup>, Sandy Liu MD<sup>23</sup>, Vivek Kumar MD<sup>24</sup>, Mark P. Lythgoe MBBS<sup>25</sup>, David J. Pinato MD, PhD<sup>25</sup>, Jure Murgic MD PhD<sup>26</sup>, Ana Fröbe MD, PhD<sup>26</sup>, Monika Joshi MD<sup>27</sup>, Pedro Isaacsson Velho MD<sup>28</sup>, Noah Hahn MD<sup>28</sup>, Lucia Alonso Buznego MD<sup>29</sup>, Ignacio Duran MD<sup>29</sup>, Marcus Moses MS<sup>30</sup>, Pedro Barata MD, MSc<sup>30</sup>, Matthew D. Galsky MD<sup>31</sup>, Guru Sonpavde MD<sup>32</sup>, Evan Y. Yu MD<sup>2,3</sup>, Pavlos Msaouel MD, PhD<sup>33,34†</sup>, Vadim S. Koshkin MD<sup>6†</sup>, Petros Grivas MD, PhD<sup>2,3†</sup>

\*S.M.E. and A.R.K. contributed equally to this manuscript

† P.M., V.S.K., and P.G. contributed equally to this manuscript

<sup>1</sup>*Faculty of Medicine, School of Health Sciences, Democritus University of Thrace, Alexandroupolis, Greece.*

<sup>2</sup>*Division of Oncology, Department of Medicine, University of Washington, Seattle, WA, USA.*

<sup>3</sup>*Clinical Research Division, Fred Hutchinson Cancer Research Center, Seattle, WA, USA.*

<sup>4</sup>*Department of Medicine, University of Pittsburgh, Pittsburgh, PA, USA.*

<sup>5</sup>*Department of Medical Oncology, Hospital Universitario 12 de Octubre, Madrid, Spain.*

<sup>6</sup>*Division of Oncology, Department of Medicine, University of California, San Francisco, San Francisco, CA, USA.*

This is the author manuscript accepted for publication and has undergone full peer review but has not been through the copyediting, typesetting, pagination and proofreading process, which may lead to differences between this version and the [Version of Record](#). Please cite this article as [doi: 10.1111/BJU.15324](https://doi.org/10.1111/BJU.15324)

This article is protected by copyright. All rights reserved

<sup>7</sup>*Division of Oncology, Department of Medicine, University of Michigan, Ann Arbor, MI, USA.*

<sup>8</sup>*Winship Cancer Institute of Emory University, Atlanta, GA, USA.*

<sup>9</sup>*Division of Hematology/Oncology, Department of Medicine, University of California, San Diego, La Jolla, CA, USA.*

<sup>10</sup>*Division of Oncology, Department of Medicine, University of Utah, Salt Lake City, UT, USA.*

<sup>11</sup>*Department of Medicine, University of Iowa, Iowa City, IA, USA.*

<sup>12</sup>*Division of Oncology, Department of Medicine, University of Iowa, Iowa City, IA, USA.*

<sup>13</sup>*Vall d'Hebron Institute of Oncology, Vall d' Hebron University Hospital, Universitat Autònoma de Barcelona, Barcelona, Spain.*

<sup>14</sup>*Division of Hematology/Oncology, Department of Medicine, University of Virginia School of Medicine, Charlottesville, VA.*

<sup>15</sup>*Division of Medical Oncology, Seidman Cancer Center at Case Comprehensive Cancer Center, Cleveland, OH.*

<sup>16</sup>*Division of Hematology and Oncology, Department of Medicine, Medical College of Wisconsin, Milwaukee, WI.*

<sup>17</sup>*Division of Medical Oncology, Duke University, Durham, NC.*

<sup>18</sup>*Departments of Medical Oncology and Urology, Montefiore Medical Center, Bronx, NY, USA.*

<sup>19</sup>*Stephenson Cancer Center, University of Oklahoma Health Sciences Center, Oklahoma City, OK, USA.*

<sup>20</sup>*Department of Clinical Therapeutics, Alexandra General Hospital, National and Kapodistrian University of Athens, School of Medicine, Athens, Greece.*

<sup>21</sup>*2nd Propaedeutic Dept of Internal Medicine, ATTIKON University Hospital, National and Kapodistrian University of Athens, School of Medicine, Athens, Greece.*

<sup>22</sup>*Medical Oncology Department, Hospital del Mar Research Institute, Barcelona, Spain.*

<sup>23</sup>*Division of Hematology/Oncology, David Geffen School of Medicine at UCLA, Los Angeles, CA, USA.*

<sup>24</sup>*Department of Medicine, Brigham and Women's Hospital, Harvard Medical School, Boston, MA, USA.*

<sup>25</sup>*Department of Surgery and Cancer, Imperial College London, London, UK.*

<sup>26</sup>*Department of Oncology and Nuclear Medicine, University Hospital Center Sestre Milosrdnice, Zagreb, School of Dental Medicine, Zagreb, Croatia.*

<sup>27</sup>*Division of Hematology/Oncology, Department of Medicine, Penn State Cancer Institute, Hershey, PA, USA.*

<sup>28</sup>*Department of Oncology, Sidney Kimmel Comprehensive Cancer Center, Baltimore, MD, USA.*

<sup>29</sup>*Hospital Universitario Marques de Valdecilla. IDIVAL. Santander, Spain.*

<sup>30</sup>*Deming Department of Medicine, Section of Hematology/Oncology, Tulane University, New Orleans, LA, USA.*

<sup>31</sup>*Division of Oncology, Department of Medicine, Icahn School of Medicine at Mount Sinai, New York, NY, USA.*

<sup>32</sup>*Genitourinary Oncology Program, Dana-Farber Cancer Institute, Harvard Medical School, Boston, MA, USA.*

<sup>33</sup>*Department of Genitourinary Medical Oncology, The University of Texas MD Anderson Cancer Center, Houston, TX, USA.*

<sup>34</sup>*Department of Translational Molecular Pathology, The University of Texas MD Anderson Cancer Center, Houston, TX, USA.*

**Corresponding author:**

Petros Grivas, M.D., PhD.

Associate Professor, Division of Oncology, University of Washington School of Medicine,  
Seattle Cancer Care Alliance, 1144 Eastlake Ave E, Mailstop: LG-465, Seattle, WA 98109, USA

Associate Professor, Clinical Research Division, Fred Hutchinson Cancer Research Center

Email: [pgrivas@uw.edu](mailto:pgrivas@uw.edu)

Author Manuscript

DR. STEPAN M. ESAGIAN (Orcid ID : 0000-0002-7602-862X)

DR. ALI KHAKI (Orcid ID : 0000-0002-4655-4426)

DR. EVAN SHRECK (Orcid ID : 0000-0003-4388-6617)

DR. PAVLOS MSAOUEL (Orcid ID : 0000-0001-6505-8308)

Article type : Original Article

Article Category: Urological Oncology

## **ABSTRACT**

### **Objectives**

To compare clinical outcomes between patients with locally advanced (unresectable) or metastatic urothelial carcinoma (aUC) in the upper and lower urinary tract receiving immune checkpoint inhibitors (ICIs).

### **Patients and methods**

We performed a retrospective cohort study collecting clinicopathologic, treatment, and outcome data for patients with aUC receiving ICIs from 2013 to 2020 across 24 institutions. We compared the objective response rate (ORR), overall survival (OS), and progression-free survival (PFS) between patients with upper and lower tract urothelial carcinoma (UTUC, LTUC). Univariable and multivariable logistic and Cox regression were used to assess the effect of UTUC on ORR, OS, and PFS. Subgroup analyses were performed stratified based on histology (pure, mixed) and line of treatment (first-line, subsequent-line).

### **Results**

Out of a total of 746 eligible patients, 707, 717, and 738 were included in the ORR, OS, and PFS analyses, respectively. Our results did not contradict the hypothesis that patients with UTUC and LTUC had similar ORR (24% vs 28%, adjusted odds ratio [aOR]: 0.73, 95% confidence interval [CI]: 0.43-1.24), OS (median: 9.8 vs. 9.6

This article is protected by copyright. All rights reserved

months, adjusted hazard ratio [aHR]: 0.93, 95% CI: 0.73-1.19), and PFS (median: 4.3 vs. 4.1 months, aHR: 1.01, 95% CI: 0.81-1.27). Patients with mixed-histology UTUC had significantly lower ORR and shorter PFS vs. mixed-histology LTUC (aOR: 0.20, 95% CI: 0.05-0.91 and aHR: 1.66, 95% CI: 1.06-2.59), respectively).

## Conclusion

Overall, patients with UTUC and LTUC receiving ICIs have comparable response and outcomes. Subgroup analyses based on histology showed that those with mixed-histology UTUC had lower ORR and shorter PFS compared to mixed-histology LTUC. Further studies and evaluation of molecular biomarkers can help refine patient selection for immunotherapy.

**Keywords:** bladder cancer, checkpoint inhibitor, immunotherapy, upper tract urothelial cancer, variant histology

## INTRODUCTION

Urothelial carcinoma is the 6<sup>th</sup> most common malignancy in the United States (US) and 5<sup>th</sup> most common malignancy in Europe. In 2020, bladder cancer is estimated to result in 17,980 deaths in the US and 49,185 deaths in Europe (1,2). About 90-95% of urothelial carcinomas (UCs) arise in the lower urinary tract (bladder and urethra), while the remaining 5-10% arise from the upper urinary tract (renal pelvis and ureter). Despite morphologic similarities, lower and upper tract urothelial carcinoma (LTUC, UTUC) have differences in epidemiology, tumor behavior, molecular characteristics, and prognosis (3–5). These differences may stem from distinct embryologic origins, anatomical location, genetic features, discordant staging, and practical considerations in diagnosis and management (6,7). Data regarding the management of UTUC are limited due to its lower prevalence. As a result, UTUC and LTUC are often treated as one entity with treatment decisions for UTUCs often informed based on data from LTUC-predominant populations, especially in the advanced disease setting. This approach may be suboptimal given the poorer outcomes for UTUC relative to LTUC with conventional LTUC-based therapies, when adjusted for stage (3).

The introduction of immune checkpoint inhibitors (ICIs) led to a paradigm shift in the treatment of locally advanced / unresectable or metastatic (a)UC for cisplatin-ineligible patients or after platinum-based chemotherapy (8). Five ICIs have been approved by the Food and Drug Administration (FDA) for treatment of aUC in the US, with pembrolizumab showing longer overall survival (OS) when compared to salvage chemotherapy (platinum-refractory setting) and avelumab plus best supportive care showing longer OS relative to best supportive care alone (post-platinum switch maintenance setting) (9,10). UTUC representation in ICI trials has been variable. This article is protected by copyright. All rights reserved

ranging from 14% to 30% (9–18). Data from subgroup analyses between UTUC and LTUC have been limited and conflicting, with a number of trials showing a higher objective response rate (ORR) in UTUC with atezolizumab (12), while others favored higher ORR in LTUC with pembrolizumab and avelumab (15,17). To address this knowledge gap, we compared ORR, progression free survival (PFS), and overall survival (OS) between patients with advanced UTUC and LTUC receiving ICIs, using a multi-institution retrospective cohort. We hypothesized that given similarities in the pathogenesis, treatment response and outcomes would be similar in advanced UTUC and LTUC.

## **PATIENTS AND METHODS**

### **Patient Selection and Data Collection**

After IRB approval, we performed a retrospective cohort study comparing oncologic outcomes between patients with UTUC and LTUC. Patients with pure- or mixed-histology aUC receiving ICI monotherapy for this indication were included. Those receiving ICIs as part of a clinical trial, in combination with another agent, for an indication other than aUC, or those who received multiple lines of ICIs were excluded. Patients with pure non-urothelial histology were also excluded. Each participating institution identified patients using provider driven and electronic health record search algorithms to allow for consecutive evaluation. The collected data included baseline characteristics (demographics, clinicopathological, and laboratory variables), treatment response, and long-term clinical outcomes. Data were collected by chart abstraction using secure, web-based, standardized REDCap electronic data capture tools hosted at the Institute of Translational Health Sciences (19). Data collected via alternative methods were uploaded into REDCap for secure storage and standardization of variables.

All patients underwent standard of care imaging as per treating provider. The evaluation of both best response and progression were determined according to the chart abstractor's assessment based on best available information from clinical notes and radiographic studies and did not include a blinded central radiology review. Similarly, pathology assessment was based on chart abstraction and did not include central pathology review. The ORR was calculated as the sum of patients with investigator-designated (complete or partial) response divided by the total number of patients with available data. OS was measured from the date of ICI initiation until the date of death; patients that were still alive were censored at the date of last follow-up visit. PFS was measured from the date of ICI initiation until the date of radiographic and/or clinical progression, or death; patients without progression or death were censored at the date of last follow-up visit.

### **Statistical Analysis**

Baseline characteristics were summarized with descriptive statistics and compared with chi-square test and Student's t-test for categorical and continuous variables, respectively. Univariable and multivariable logistic regression was used to estimate the odds ratio (OR) and 95% confidence interval (CI) for ORR between UTUC and LTUC. In the multivariable analysis, we used two different a priori specified models based on the Bellmunt risk factors (20) – one adjusting for liver metastases, hemoglobin < 10 g/dL, and ECOG performance status > 0, individually; and the second model adjusting for the calculated Bellmunt score (i.e. liver metastases, hemoglobin < 10 g/dL, and ECOG performance status > 0).

We used the Kaplan-Meier method for survival curves and to estimate median (m)OS and median (m)PFS. Cox regression was used to determine the effect of tumor location on OS and PFS; differences between groups were expressed as hazard ratios (HRs) and 95% confidence intervals (CIs). Similar to above, for the multivariable analysis, we used two different a priori specified models adjusting for individual Bellmunt risk factors (20) or for the calculated Bellmunt score.

Additional subgroup analyses were performed to compare outcomes between patients with LTUC and UTUC stratified by treatment line (first line and subsequent/salvage), histology (pure- and mixed-histology UC), and specific tumor location (renal pelvis, ureter, bladder, urethra) for all outcomes of interest. Statistical significance was set at  $p < 0.05$ ; all p-values were two-tailed. All statistical analyses were performed using Stata IC 16.0 (StataCorp LLC, College Station, Texas).

## RESULTS

### Patient selection and characteristics

A total of 984 patients with aUC received ICIs monotherapy between 2013 and 2020 across 24 different institutions. After excluding ineligible patients, 746 patients were included in our population (**Figure 1**). A breakdown of patients according to institution is provided in **Supplemental Table 1**. Baseline patient characteristics are presented in **Table 1**. Men comprised 76% of patients with LTUC and 62% with UTUC; 71% had smoking history within LTUC and 59% within UTUC. Liver metastases were found in 18% of patients with LTUC and 29% of patients with UTUC. A breakdown of the mixed-histology UC variants for each group is provided in **Supplemental Table 2**.

### Objective Response Rate

A total of 707 patients were included in the ORR evaluable population with 83% having LTUC and 17% UTUC. Our results did not contradict the hypothesis that patients with UTUC and LTUC had similar ORR (24% vs 28%, OR: 0.81, 95% CI: 0.52-1.27,  $p = 0.36$ ; **Table 2**). Similarly, this hypothesis was not contradicted in either



of the two multivariable logistic regression models or when further stratifying for either specific tumor location (not shown) or treatment line.

In the subgroup analysis according to histology, patients with mixed-histology UTUC (n = 28) had significantly lower ORR compared to those with mixed-histology LTUC (n = 170) (11% vs 29%; model 1: adjusted (a)OR: 0.20, 95% CI: 0.05-0.91, p = 0.03 / model 2: aOR: 0.28, 95% CI: 0.08-0.98, p = 0.047).

### **Overall Survival**

A total of 717 patients were included in the OS analysis with 82% having LTUC and 18% UTUC. Our results did not contradict the hypothesis that patients with UTUC and LTUC had similar OS (mOS: 9.8 months, 95% CI: 7.9-14.3 months vs. 9.6 months, 95% CI: 8.2-11.4 months; HR: 0.97, 95% CI: 0.76-1.25, p = 0.84; **Figure 2A, Table 3**). This remained true following adjustment in multivariable models (model 1: adjusted (a)HR: 0.92, 95% CI: 0.69-1.21, p = 0.53 / model 2: aHR: 0.93, 95% CI: 0.73-1.19, p = 0.58) or after stratifying by specific tumor location (not shown), line of therapy, or histology.

### **Progression-Free Survival**

A total of 738 patients were included in the PFS analysis with 83% and 17% with LTUC and UTUC, respectively. The mPFS was 4.1 months (95% CI: 3.5-4.9 months) in the LTUC group and 4.3 months (95% CI: 3.2-5.9 months) in the UTUC group (**Figure 2B, Table 4**). Our results did not contradict the hypothesis that patients with UTUC and LTUC had similar PFS with univariable (HR: 1.05, 95% CI: 0.84-1.32, p = 0.65) and multivariable Cox regression, or after stratifying by specific tumor location (not shown) or line of therapy.

In the subgroup analysis according to histology, patients with mixed-histology LTUC (n = 178) had mPFS of 4.3 months (95% CI: 3.0-7.4 months), compared to 2.2 months (95% CI: 1.6-5.9 months) in patients with mixed-histology UTUC (n = 30); mixed-histology UTUC was associated with shorter PFS in the multivariable Cox regression adjusting for the calculated Bellmunt score (aHR: 1.66, 95% CI: 1.06-2.59, p = 0.03).

## **DISCUSSION**

In this multicenter retrospective cohort study of patients with aUC receiving ICIs, our data did not contradict the null hypothesis that ORR, OS, and PFS were similar between patients with UTUC and LTUC. However, patients with mixed-histology UTUC had lower ORR and shorter PFS compared to patients with mixed-histology LTUC.

Previous clinical trials investigating the safety and efficacy of ICIs in aUC have provided conflicting data about the outcomes of ICI treatment for patients with advanced UTUC. In the cisplatin-ineligible cohort of the

IMvigor210 phase II trial on atezolizumab, the ORR was numerically higher in UTUC (39%, 13/33) compared to LTUC (16%, 14/85) (12). In contrast, the ORR of UTUC was numerically lower compared to LTUC in the platinum-refractory cohort of the IMVigor210 trial (UTUC: 13%, 7/52 vs. LTUC: 23%, 39/168) (21), the IMvigor211 phase III trial on atezolizumab (UTUC: 11%, 10/94 vs. LTUC: 18%, 44/245) (21), the KEYNOTE-052 phase II trial of pembrolizumab (UTUC: 22%, 13/59 vs. LTUC: 28%, 70/247) (15), and the JAVELIN phase I trial of avelumab (UTUC: 11%, 4/36 vs. LTUC: 18%, 23/125) (17). In regards to OS, UTUC and LTUC had comparable mOS according to an updated analysis of the platinum-refractory cohort of the IMvigor210 trial (UTUC: 7.9 months vs. LTUC: 7.6 months) (25) and a post-hoc analysis of the IMvigor211 trial (UTUC: 10.9 months vs. LTUC: 9.7 months) (19). The exploratory subset analysis of the KEYNOTE 045 phase III trial suggested that pembrolizumab prolonged OS in both UTUC (HR: 0.53, 95% CI: 0.28-1.01) and LTUC (HR: 0.77, 95% CI: 0.60-0.97) compared to chemotherapy (9). In our study, the ORR, OS, and PFS were similar between the two groups. The exact tumor location in the urinary tract did not influence the results, although previous reports have shown differences in genomic features between renal pelvis and ureteral tumors (22).

In our cohort, patients with mixed-histology UTUC histology had significantly lower ORR (11%) compared to those with mixed-histology LTUC (29%). The breakdown of the mixed-histology UC variants among the two subgroups was largely similar. Prior prospective and retrospective studies have not suggested worse outcomes with ICI treatment for those with variant histology. In a recent phase II trial of dual immune checkpoint blockade with nivolumab/ipilimumab in rare genitourinary malignancies, the ORR among the 19 patients with variant histology bladder cancer was 37% (23). Further, a previous retrospective analysis using a smaller size cohort in our multicenter database only noted neuroendocrine histology to be associated with worse outcomes with ICI therapy, while other variants showed no significant differences (24). In our current study, patients with mixed-histology UTUC had significantly lower ORR than mixed-histology LTUC after adjusting for Bellmunt score. Therefore, we hypothesize that this difference may be attributed to inherent biologic differences rather than confounding prognostic factors; however, this hypothesis needs to be further tested. Notably, previous studies have reported significant differences in the genomic makeup, transcriptomic profile, and immunogenicity context between UTUC and LTUC (4,5,25), and among the different mixed-histology UC variants (26). This may suggest that patients with variant histology in UTUC are a particularly high-risk population.

There are several potential underlying mechanisms behind the differences in the response to ICIs among individuals. As with many solid tumors, the degree of T-cell infiltration in the tumor microenvironment has prognostic value in aUC (27). Specifically, the non-T-cell-inflamed tumor phenotype has been associated with poor response to ICI and worse prognosis (28). Most patients with UTUC express the non-T-cell-inflamed

This article is protected by copyright. All rights reserved

phenotype, which may account for the lower ORR and inferior survival of patients with UTUC in a number of clinical trials (15,17,21,25). Molecular pathways associated with the non-T-cell-inflamed phenotype include the  $\beta$ -catenin, PPAR- $\gamma$ , and FGFR3-driven pathways (29). Many UTUC tumors may have FGFR3 mutation or fusion (up to 40-60% in high-grade, up to 74% low-grade), significantly higher compared to LTUC, which may be associated with the non-T-cell-inflamed phenotype (22,25,30,31). However, the prognostic and predictive (regarding benefit with ICI) value of FGFR3 activating mutation or fusion is still uncertain (32,33). On the other hand, UTUC is associated with an only slightly higher rate of microsatellite instability (MSI) compared to LTUC (22,34). Tumors with MSI seem to have better response to ICI (12,35). Epigenetic factors may also account for differences in response to ICI (6).

Despite the demonstrated activity of ICIs in the platinum-refractory space, patients receiving ICIs for aUC still have a poor prognosis. As with previous clinical trials, the ORR to ICI therapy in our study was below 30% regardless of tumor location. In addition, the mPFS and mOS did not exceed 5 and 10 months, respectively, implying that most patients have progression in a short amount of time and die from the disease a few months later. Therefore, more work is needed to identify biomarkers, new therapy targets, and other strategies to guide therapy selection and optimize outcomes. While clinical models to predict response or survival have been proposed (36,37), much work remains to identify and prospectively validate predictive tools. Newer techniques, such as “liquid biopsy” may also provide a minimally invasive alternative to conventional tumor tissue analysis for next generation sequencing (38–41). In addition, there are strategies aiming to improve the efficacy of ICIs in aUC by combining them with i) other ICIs, ii) anti-FGFR3 targeted agents, iii) platinum-based chemotherapy, iv) localized treatments (e.g., radiotherapy), and v) antibody-drug conjugates (e.g. enfortumab vedotin, sacituzumab govitecan), among others (42–44). As with many combination regimens, we should carefully consider whether potential improvement of outcomes is the result of drug independence (which may address tumor heterogeneity among patients) rather than true additivity or synergism (which may address intra-tumor heterogeneity in an individual patient) (45).

The strengths of our study include a large sample size and diverse patient population originating from multiple institutions across North America and Europe, approaching in a “real world” setting. Nonetheless, limitations still apply and warrant careful interpretation of our results. Our study was retrospective in nature and lacked patient randomization, matching, or other adjustments to fully address potential confounding or selection biases. ECOG performance status, which may affect survival with ICI therapy in aUC (46), was missing in a proportion of patients. We were unable to examine differences in T-cell infiltration/density, biomarker expression (e.g., PD-L1, gene expression profiling, DNA damage response gene mutations, MSI status, tumor mutational burden), across different subgroups, which may be related to ICI response (25,47). There could have been

heterogeneity in data collection and treatment (and surveillance) practices across participating institutions. For example, imaging to assess progression was performed based on routine care rather than standardized time intervals. In addition, there was no central radiology review to provide standardization. In particular, treatment response was assessed according to investigator evaluation instead of central review, which may account for the slightly higher ORR observed in our study compared to clinical trials (15,17). The lack of central pathology review precluded us from obtaining important histopathological information, such as the percentage of variant histology among different specimens. Histopathological assessment was performed according to the standard practices of each participating institution; however, all the institutions have focused pathology expertise in urothelial cancer as tertiary referral centers. These practices may have significantly varied among institutions, due to differences in the size, source, and quality of tumor specimens, the percentages of tumor content, urothelial, and variant tumor tissue, as well as inter-observer variability. Finally, we were unable to obtain granular data on the breakdown of locally advanced (unresectable) vs. metastatic disease in each group, response to previous therapy, and time interval from last dose of previous therapy to ICI initiation.

## **CONCLUSION**

Clinical trial data on response and outcomes of ICIs in UTUC are conflicting. In our study, patients with UTUC and LTUC receiving ICIs were noted to have similar ORR, OS, and PFS. However, mixed-histology UTUC had significantly lower ORR and shorter PFS compared to mixed-histology LTUC. Further studies and evaluation of molecular biomarkers can help optimize patient selection for ICI therapy.

## **ACKNOWLEDGEMENTS**

Ali Raza Khaki was supported by the National Cancer Institute under training grant T32CA009515. David J. Pinato is supported by grant funding from the Wellcome Trust Strategic Fund (PS3416). Research Electronic Data Capture at the Institute of Translational Health Sciences is supported by the National Center for Advancing Translational Sciences of the National Institutes of Health under award UL1 TR002319. Evan Y. Yu and Petros Grivas acknowledge the support of the Seattle Translational Tumor Research Program at Fred Hutchinson Cancer Research Center; Dr. Diamantopoulos and Dr. Grivas acknowledge the support of Kure It Cancer Research. David J. Pinato would like to acknowledge the infrastructure support provided by Imperial Experimental Cancer Medicine Centre, Cancer Research UK Imperial Centre, the Imperial College Healthcare NHS Trust Tissue Bank and the Imperial College BRC.

## REFERENCES

1. National Cancer Institute. Bladder Cancer — Cancer Stat Facts [Internet]. [cited 2020 Sep 24]. Available from: <https://seer.cancer.gov/statfacts/html/urinb.html>
2. European Cancer Information System. Cancer burden statistics and trends across Europe | ECIS [Internet]. [cited 2020 Sep 24]. Available from: <https://ecis.jrc.ec.europa.eu/index.php>
3. Green DA, Rink M, Xylinas E, Matin SF, Stenzl A, Roupret M, et al. Urothelial carcinoma of the bladder and the upper tract: Disparate twins. Vol. 189, *Journal of Urology*. 2013. p. 1214–21.
4. Winters BR, De Sarkar N, Arora S, Bolouri H, Jana S, Vakar-Lopez F, et al. Genomic distinctions between metastatic lower and upper tract urothelial carcinoma revealed through rapid autopsy. *JCI Insight*. 2019 Jul 11;4(13).
5. Agarwal N, Pal SK, Hahn AW, Nussenzeig RH, Pond GR, Gupta S V., et al. Characterization of metastatic urothelial carcinoma via comprehensive genomic profiling of circulating tumor DNA. *Cancer*. 2018 May 15;124(10):2115–24.
6. Leow JJ, Chong KT, Chang SL, Bellmunt J. Upper tract urothelial carcinoma: A different disease entity in terms of management. Vol. 1, *ESMO Open*. BMJ Publishing Group; 2016. p. e000126.
7. Shao IH, Chang YH, Pang ST. Recent advances in upper tract urothelial carcinomas: From bench to clinics. Vol. 26, *International Journal of Urology*. Blackwell Publishing; 2019. p. 148–59.
8. Gopalakrishnan D, Koshkin VS, Ornstein MC, Papatsoris A, Grivas P. Immune checkpoint inhibitors in urothelial cancer: Recent updates and future outlook. Vol. 14, *Therapeutics and Clinical Risk Management*. Dove Medical Press Ltd.; 2018. p. 1019–40.
9. Bellmunt J, de Wit R, Vaughn DJ, Fradet Y, Lee J-L, Fong L, et al. Pembrolizumab as Second-Line Therapy for Advanced Urothelial Carcinoma. *N Engl J Med*. 2017 Mar 16;376(11):1015–26.
10. Powles T, Park SH, Voog E, Caserta C, Valderrama BP, Gurney H, et al. Avelumab Maintenance Therapy for Advanced or Metastatic Urothelial Carcinoma. *N Engl J Med*. 2020 Sep 18;NEJMoa2002788.
11. Rosenberg JE, Hoffman-Censits J, Powles T, Van Der Heijden MS, Balar A V., Necchi A, et al. Atezolizumab in patients with locally advanced and metastatic urothelial carcinoma who have progressed

following treatment with platinum-based chemotherapy: A single-arm, multicentre, phase 2 trial. *Lancet*. 2016 May 7;387(10031):1909–20.

12. Balar A V., Galsky MD, Rosenberg JE, Powles T, Petrylak DP, Bellmunt J, et al. Atezolizumab as first-line treatment in cisplatin-ineligible patients with locally advanced and metastatic urothelial carcinoma: a single-arm, multicentre, phase 2 trial. *Lancet*. 2017 Jan 7;389(10064):67–76.
13. Powles T, Durán I, van der Heijden MS, Loriot Y, Vogelzang NJ, De Giorgi U, et al. Atezolizumab versus chemotherapy in patients with platinum-treated locally advanced or metastatic urothelial carcinoma (IMvigor211): a multicentre, open-label, phase 3 randomised controlled trial. *Lancet*. 2018 Feb 24;391(10122):748–57.
14. Galsky MD, Arija JÁA, Bamias A, Davis ID, De Santis M, Kikuchi E, et al. Atezolizumab with or without chemotherapy in metastatic urothelial cancer (IMvigor130): a multicentre, randomised, placebo-controlled phase 3 trial. *Lancet*. 2020 May 16;395(10236):1547–57.
15. Balar A V., Castellano D, O'Donnell PH, Grivas P, Vuky J, Powles T, et al. First-line pembrolizumab in cisplatin-ineligible patients with locally advanced and unresectable or metastatic urothelial cancer (KEYNOTE-052): a multicentre, single-arm, phase 2 study. *Lancet Oncol*. 2017 Nov 1;18(11):1483–92.
16. Sharma P, Retz M, Siefker-Radtke A, Baron A, Necchi A, Bedke J, et al. Nivolumab in metastatic urothelial carcinoma after platinum therapy (CheckMate 275): a multicentre, single-arm, phase 2 trial. *Lancet Oncol*. 2017 Mar 1;18(3):312–22.
17. Patel MR, Ellerton J, Infante JR, Agrawal M, Gordon M, Aljumaily R, et al. Avelumab in metastatic urothelial carcinoma after platinum failure (JAVELIN Solid Tumor): pooled results from two expansion cohorts of an open-label, phase 1 trial. *Lancet Oncol*. 2018 Jan 1;19(1):51–64.
18. Sternberg CN, Loriot Y, James N, Choy E, Castellano D, Lopez-Rios F, et al. Primary Results from SAUL, a Multinational Single-arm Safety Study of Atezolizumab Therapy for Locally Advanced or Metastatic Urothelial or Nonurothelial Carcinoma of the Urinary Tract. *Eur Urol*. 2019 Jul 1;76(1):73–81.
19. Harris PA, Taylor R, Thielke R, Payne J, Gonzalez N, Conde JG. Research electronic data capture (REDCap)-A metadata-driven methodology and workflow process for providing translational research informatics support. *J Biomed Inform*. 2009 Apr;42(2):377–81.
20. Bellmunt J, Choueiri TK, Fougeray R, Schutz FAB, Salhi Y, Winkvist E, et al. Prognostic factors in

patients with advanced transitional cell carcinoma of the urothelial tract experiencing treatment failure with platinum-containing regimens. *J Clin Oncol*. 2010 Apr 10;28(11):1850–5.

21. Galsky MD, Banchereau R, Kadel EE, Ramirez-Montagut T, Mariathasan S, Thåström A, et al. Biological features and clinical outcomes in atezolizumab (atezo)-treated patients (pts) with metastatic urothelial cancer (mUC) of the upper vs lower urinary tract (UTUC vs LTUC). *Ann Oncol*. 2018 Oct 1;29:viii321.
22. Necchi A, Madison R, Pal SK, Ross JS, Agarwal N, Sonpavde G, et al. Comprehensive Genomic Profiling of Upper-tract and Bladder Urothelial Carcinoma. *Eur Urol Focus*. 2020;
23. McGregor BA, Campbell MT, Xie W, Farah S, Bilen MA, Sonpavde G, et al. Phase II study of nivolumab and ipilimumab for advanced rare genitourinary cancers. *J Clin Oncol*. 2020 May 20;38(15\_suppl):5018–5018.
24. Miller NJ, Khaki AR, Diamantopoulos LN, Bilen MA, Santos V, Agarwal N, et al. Histological Subtypes and Response to PD-1/PD-L1 Blockade in Advanced Urothelial Cancer: A Retrospective Study. *J Urol*. 2020;204(1):63–70.
25. Robinson BD, Vlachostergios PJ, Bhinder B, Liu W, Li K, Moss TJ, et al. Upper tract urothelial carcinoma has a luminal-papillary T-cell depleted contexture and activated FGFR3 signaling. *Nat Commun*. 2019 Dec 1;10(1):2977.
26. Li H, Zhang Q, Shuman L, Kaag M, Raman JD, Merrill S, et al. Evaluation of PD-L1 and other immune markers in bladder urothelial carcinoma stratified by histologic variants and molecular subtypes. *Sci Rep*. 2020 Dec 1;10(1):1439.
27. Sharma P, Shen Y, Wen S, Yamada S, Jungbluth AA, Gnjatic S, et al. CD8 tumor-infiltrating lymphocytes are predictive of survival in muscle-invasive urothelial carcinoma. *Proc Natl Acad Sci U S A*. 2007 Mar 6;104(10):3967–72.
28. Gajewski TF. Next Hurdle in Cancer Immunorapy: Overcoming Non-T-Cell-Inflamed Tumor Microenvironment. Vol. 42, *Seminars in Oncology*. W.B. Saunders; 2015. p. 663–71.
29. Sweis RF, Spranger S, Bao R, Paner GP, Stadler WM, Steinberg G, et al. Molecular drivers of the non-T-cell-inflamed tumor microenvironment in urothelial bladder cancer. *Cancer Immunol Res*. 2016 Jul 1;4(7):563–8.
30. Audenet F, Isharwal S, Cha EK, Donoghue MTA, Drill EN, Ostrovnaya I, et al. Clonal relatedness and

mutational differences between upper tract and bladder urothelial carcinoma. *Clin Cancer Res.* 2019 Feb 1;25(3):967–76.

31. Moss TJ, Qi Y, Xi L, Peng B, Kim TB, Ezzedine NE, et al. Comprehensive Genomic Characterization of Upper Tract Urothelial Carcinoma. *Eur Urol.* 2017 Oct 1;72(4):641–9.
32. Wang L, Gong Y, Saci A, Szabo PM, Martini A, Necchi A, et al. Fibroblast Growth Factor Receptor 3 Alterations and Response to PD-1/PD-L1 Blockade in Patients with Metastatic Urothelial Cancer(Figure presented.). *Eur Urol.* 2019 Nov 1;76(5):599–603.
33. Santiago-Walker AE, Chen F, Loriot Y, Siefker-Radtke AO, Sun L, Sundaram R, et al. Predictive value of fibroblast growth factor receptor (FGFR) mutations and gene fusions on anti-PD-(L)1 treatment outcomes in patients (pts) with advanced urothelial cancer (UC). *J Clin Oncol.* 2019 Mar 1;37(7\_suppl):419–419.
34. Catto JWF, Azzouzi AR, Amira N, Rehman I, Feeley KM, Cross SS, et al. Distinct patterns of microsatellite instability are seen in tumours of the urinary tract. *Oncogene.* 2003 Nov 27;22(54):8699–706.
35. Le DT, Uram JN, Wang H, Bartlett BR, Kemberling H, Eyring AD, et al. PD-1 blockade in tumors with mismatch-repair deficiency. *N Engl J Med.* 2015 Jun 25;372(26):2509–20.
36. Sonpavde G, Manitz J, Gao C, Tayama D, Kaiser C, Hennessy D, et al. Five-Factor Prognostic Model for Survival of Post-Platinum Patients with Metastatic Urothelial Carcinoma Receiving PD-L1 Inhibitors. *J Urol.* 2020 Jun 18;
37. Nassar AH, Mouw KW, Jegede O, Shinagare AB, Kim J, Liu CJ, et al. A model combining clinical and genomic factors to predict response to PD-1/PD-L1 blockade in advanced urothelial carcinoma. *Br J Cancer.* 2020 Feb 18;122(4):555–63.
38. Pal SK, Bajorin D, Dizman N, Hoffman-Censits J, Quinn DI, Petrylak DP, et al. Infigratinib in upper tract urothelial carcinoma versus urothelial carcinoma of the bladder and its association with comprehensive genomic profiling and/or cell-free DNA results. *Cancer.* 2020 Jun 1;126(11):2597–606.
39. Christensen E, Birkenkamp-Demtröder K, Sethi H, Shchegrova S, Salari R, Nordentoft I, et al. Early detection of metastatic relapse and monitoring of therapeutic efficacy by ultra-deep sequencing of plasma cell-free DNA in patients with urothelial bladder carcinoma. *J Clin Oncol.* 2019 Jun 20;37(18):1547–57.
40. Grivas P, Lalani A-KA, Pond GR, Nagy RJ, Faltas B, Agarwal N, et al. Circulating Tumor DNA



Alterations in Advanced Urothelial Carcinoma and Association with Clinical Outcomes: A Pilot Study. *Eur Urol Oncol.* 2019 Mar;

41. Barata PC, Koshkin VS, Funchain P, Sohal D, Pritchard A, Klek S, et al. Next-generation sequencing (NGS) of cell-free circulating tumor DNA and tumor tissue in patients with advanced urothelial cancer: A pilot assessment of concordance. *Ann Oncol.* 2017;28(10):2458–63.
42. Khaki AR, Agarwal N, Pal SK, Grivas P. Immunotherapy-based combination strategies for advanced urothelial cancer: A long quest. *Cancer.* John Wiley and Sons Inc.; 2020. p. cncr.33068.
43. Grivas P, Drakaki A, Friedlander TW, Sonpavde G. Conceptual Framework for Therapeutic Development Beyond Anti–PD-1/PD-L1 in Urothelial Cancer. *Am Soc Clin Oncol Educ B.* 2019 May;(39):284–300.
44. Grivas P, Sternberg CN, Agarwal N, Petrylak DP, Tagawa ST, Hong Q, et al. 796TiP TROPHY-U-01 Cohort 3: Sacituzumab govitecan (SG) and pembrolizumab (pembro) in patients (pts) with progression or recurrence of metastatic urothelial cancer (mUC) after platinum (PLT)-based therapy. *Ann Oncol.* 2020 Sep 1;31:S604–5.
45. Palmer AC, Sorger PK. Combination Cancer Therapy Can Confer Benefit via Patient-to-Patient Variability without Drug Additivity or Synergy. *Cell.* 2017 Dec 14;171(7):1678-1691.e13.
46. Khaki AR, Li A, Diamantopoulos LN, Bilen MA, Santos V, Esther J, et al. Impact of performance status on treatment outcomes: A real-world study of advanced urothelial cancer treated with immune checkpoint inhibitors. *Cancer.* 2020;126(6):1208–16.
47. Powles T, Walker J, Andrew Williams J, Bellmunt J. The evolving role of PD-L1 testing in patients with metastatic urothelial carcinoma. Vol. 82, *Cancer Treatment Reviews.* W.B. Saunders Ltd; 2020. p. 101925.

## FIGURE LEGENDS

**Figure 1.** Consolidated Standards of Reporting Trials diagram of patient selection. aUC: advanced urothelial carcinoma; ICI: immune checkpoint inhibitor; ORR: objective response rate; OS: overall survival; PFS: progression-free survival.

**Figure 2.** Kaplan-Meier curve of A) overall survival and B) progression-free survival according to tumor location. ICI: immune checkpoint inhibitor; UTUC: upper tract urothelial carcinoma; LTUC: lower tract urothelial carcinoma

Author Manuscript

**Table 1.** Baseline patient characteristics.

|  | UTUC     | LTUC     | p value        |
|--|----------|----------|----------------|
| Number of patients   | 130      | 616      |                |
| Age, mean (SD)   | 70 (10)  | 69 (10)  | 0.39           |
| Men  | 80 (62)  | 469 (76) | < <b>0.001</b> |
| White Race   | 99 (76)  | 456 (74) | 0.61           |
| Smoking history  | 77 (59)  | 434 (71) | <b>0.01</b>    |
| Previous cystectomy / (nephro)ureterectomy                   |          |          |                |
| Yes  | 80 (62)  | 300 (52) | <b>0.05</b>    |
| Missing information  | N/A      | 39/616   |                |
| Prior platinum-based (cisplatin or carboplatin) chemotherapy | 80 (62)  | 406 (66) | 0.34           |
| Site of primary tumor  |          |          |                |
| Bladder  | N/A      | 610 (99) |                |
| Urethra  | N/A      | 6 (1)    |                |
| Upper genitourinary system (unspecified)                     | 45 (35)  | N/A      |                |
| Renal pelvis   | 58 (45)  | N/A      |                |
| Ureter   | 27 (21)  | N/A      |                |
| Histology  |          |          |                |
| Pure urothelial  | 100 (77) | 438 (71) | 0.20           |
| Mixed urothelial   | 30 (23)  | 176 (29) |                |
| Hemoglobin < 10 g/dL   | 33 (27)  | 163 (27) | 0.92           |
| Liver metastasis   | 37 (29)  | 112 (18) | <b>0.01</b>    |
| ECOG Performance Status                                      |          |          |                |
| 0  | 26 (24)  | 120 (21) | 0.86           |
| 1  | 58 (54)  | 304 (54) |                |
| 2  | 20 (19)  | 121 (22) |                |
| 3  | 4 (4)    | 16 (3)   |                |
| 4  | 0 (0)    | 2 (1)    |                |
| Missing information  | 22/130   | 53/616   |                |
| Bellmunt risk factors  |          |          |                |
| 0  | 20 (15)  | 90 (15)  | 0.27           |

|               |         |          |      |
|---------------|---------|----------|------|
| 1             | 57 (44) | 310 (50) |      |
| 2             | 42 (32) | 187 (30) |      |
| 3             | 11 (9)  | 29 (5)   |      |
| Type of ICI   |         |          |      |
| Atezolizumab  | 49 (38) | 292 (48) | 0.18 |
| Pembrolizumab | 67 (52) | 252 (41) |      |
| Nivolumab     | 9 (7)   | 44 (7)   |      |
| Durvalumab    | 3 (2)   | 17 (3)   |      |
| Avelumab      | 0 (0)   | 5 (1)    |      |

Values are expressed as n (%) unless otherwise specified. UTUC: upper tract urothelial carcinoma; LTUC: lower tract urothelial carcinoma; ECOG: Eastern Cooperative Oncology Group; ICI: immune checkpoint inhibitor.

Author Manuscript

**Table 2.** Objective response rate according to tumor location.

| <b>Analysis</b>                | <b>Location</b>                | <b>ORR (%)<br/>(95% CI)</b> | <b>Univariable,<br/>OR (95% CI)</b> | <b>Multivariable 1,<br/>OR (95% CI)</b> | <b>Multivariable 2,<br/>OR (95% CI)</b> |
|--------------------------------|--------------------------------|-----------------------------|-------------------------------------|---|---|
| Primary                        | LTUC (n = 584)                 | 28 (25-32)                  | Reference                           | Reference                               | Reference                               |
|                                | UTUC (n = 123)                 | 24 (18-33)                  | 0.81 (0.52-1.27)                    | 0.73 (0.43-1.24)                        | 0.83 (0.53-1.31)                        |
| Subgroup by<br>histology       | Pure LTUC (n = 414)            | 28 (24-33)                  | Reference                           | Reference                               | Reference                               |
|                                | Pure UTUC (n = 95)             | 28 (20-38)                  | 1.02 (0.62-1.67)                    | 1.00 (0.56-1.78)                        | 1.06 (0.65-1.75)                        |
|                                | Mixed LTUC (n = 170)           | 29 (23-37)                  | Reference                           | Reference                               | Reference                               |
|                                | Mixed UTUC (n = 28)            | 11 (4-29)                   | 0.29 (0.09-1.00)                    | 0.20 (0.05-0.91)                        | 0.28 (0.08-0.98)                        |
| Subgroup by<br>line of therapy | First-line LTUC (n = 328)      | 31 (26-36)                  | Reference                           | Reference                               | Reference                               |
|                                | First-line UTUC (n = 57)       | 35 (24-48)                  | 1.23 (0.68-2.23)                    | 1.17 (0.58-2.37)                        | 1.25 (0.69-2.28)                        |
|                                | Subsequent-line LTUC (n = 256) | 26 (21-32)                  | Reference                           | Reference                               | Reference                               |
|                                | Subsequent-line UTUC (n = 66)  | 15 (8-26)                   | 0.51 (0.25-1.06)                    | 0.51 (0.22-1.20)                        | 0.53 (0.25-1.09)                        |

ORR: objective response rate; OR: odds ratio; CI: confidence interval; UTUC: upper tract urothelial carcinoma; LTUC: lower tract urothelial carcinoma

**Table 3.** Overall survival (OS) according to tumor location.

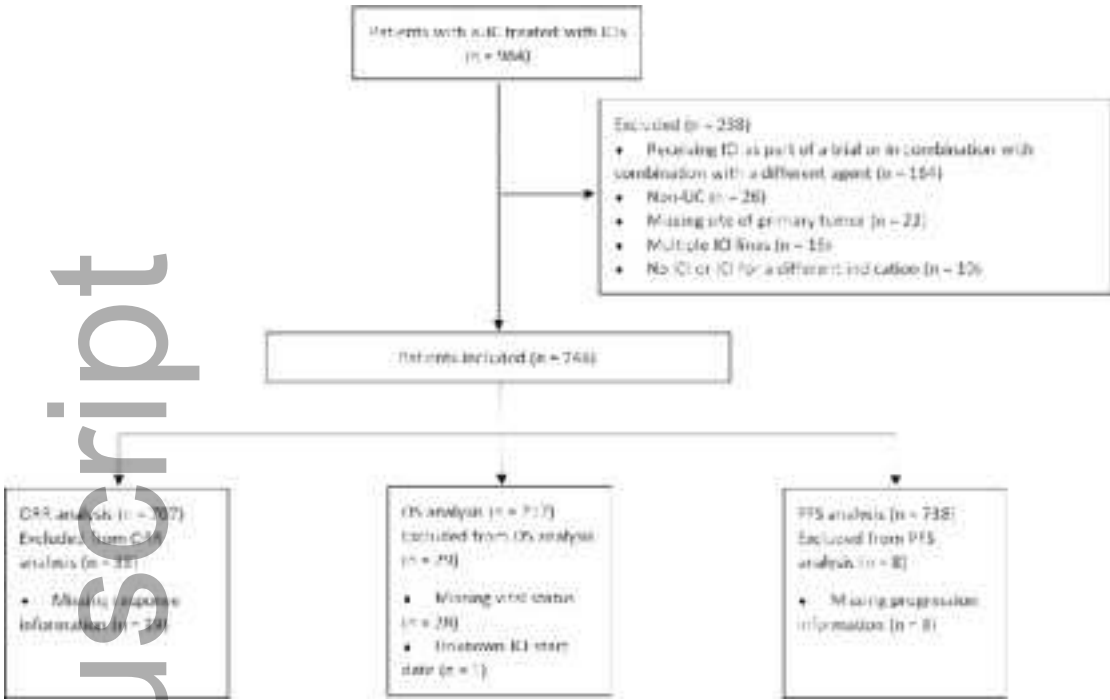
| <b>Analysis</b>                | <b>Location</b>                | <b>Median OS<br/>(95% CI) *</b> | <b>Univariable,<br/>HR (95% CI)</b> | <b>Multivariable 1,<br/>HR (95% CI)</b> | <b>Multivariable 2,<br/>HR (95% CI)</b> |
|--------------------------------|--------------------------------|---------------------------------|-------------------------------------|---|---|
| Primary                        | LTUC (n = 590)                 | 9.6 (8.2-11.4)                  | Reference                           | Reference                               | Reference                               |
|                                | UTUC (n = 127)                 | 9.8 (7.9-14.3)                  | 0.97 (0.76-1.25)                    | 0.92 (0.69-1.21)                        | 0.93 (0.73-1.19)                        |
| Subgroup by<br>histology       | Pure LTUC (n = 417)            | 9.3 (7.8-11.4)                  | Reference                           | Reference                               | Reference                               |
|                                | Pure UTUC (n = 98)             | 10.9 (8.3-14.4)                 | 0.89 (0.67-1.18)                    | 0.78 (0.55-1.08)                        | 0.83 (0.62-1.10)                        |
|                                | Mixed LTUC (n = 173)           | 10.6 (6.7-14.1)                 | Reference                           | Reference                               | Reference                               |
|                                | Mixed UTUC (n = 29)            | 7.6 (2.4-19.1)                  | 1.30 (0.82-2.09)                    | 1.46 (0.88-2.41)                        | 1.36 (0.85-2.17)                        |
| Subgroup by<br>line of therapy | First-line LTUC (n = 339)      | 10.9 (7.9-13.2)                 | Reference                           | Reference                               | Reference                               |
|                                | First-line UTUC (n = 62)       | 13.4 (8.3-19.9)                 | 0.89 (0.62-1.29)                    | 0.77 (0.50-1.19)                        | 0.85 (0.58-1.24)                        |
|                                | Subsequent-line LTUC (n = 251) | 8.6 (7.3-10.9)                  | Reference                           | Reference                               | Reference                               |
|                                | Subsequent-line UTUC (n = 65)  | 8.4 (5.3-14.0)                  | 1.03 (0.74-1.43)                    | 0.94 (0.65-1.36)                        | 1.05 (0.75-1.46)                        |

\*in months; HR: hazard ratio; CI: confidence interval; UTUC: upper tract urothelial carcinoma; LTUC: lower tract urothelial carcinoma

**Table 4.** Progression-free survival (PFS) according to tumor location.

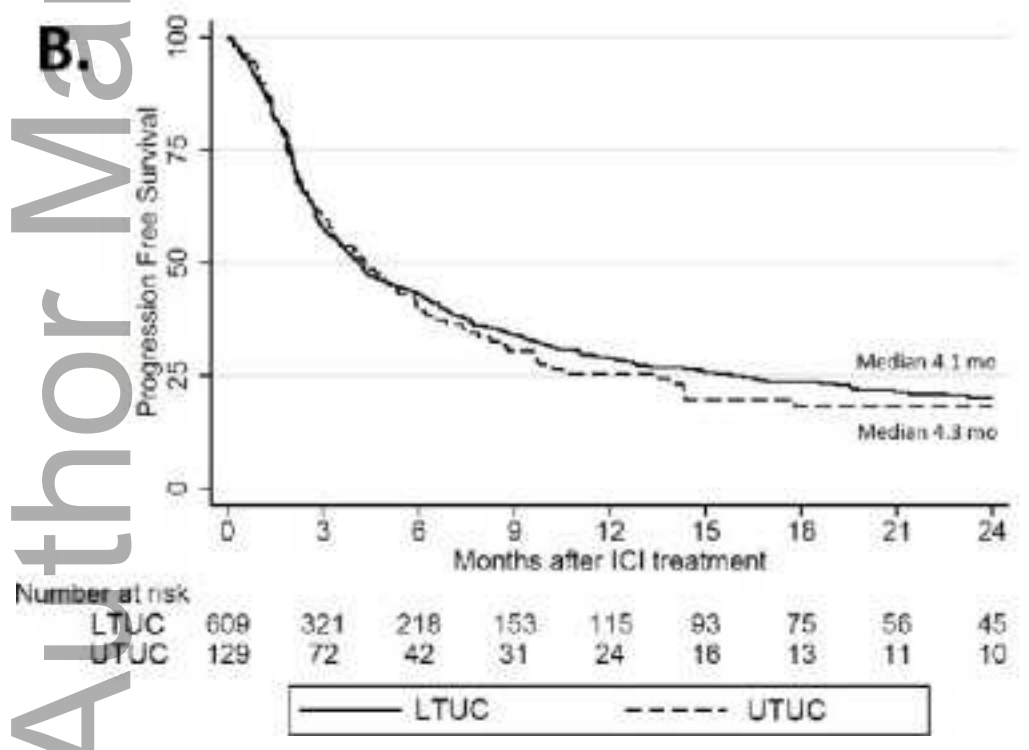
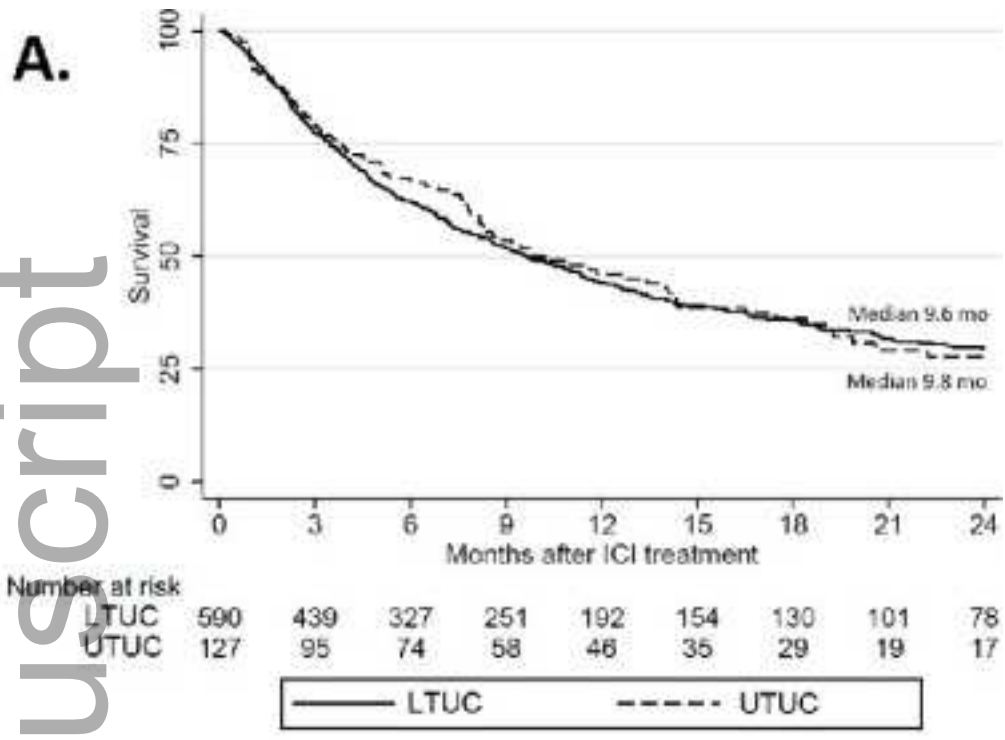
| <b>Analysis</b>                   | <b>Location</b>                | <b>Median PFS<br/>(95% CI) *</b> | <b>Univariable,<br/>HR (95% CI)</b> | <b>Multivariable 1,<br/>HR (95% CI)</b> | <b>Multivariable 2,<br/>HR (95% CI)</b> |
|-----------------------------------|--------------------------------|----------------------------------|-------------------------------------|---|---|
| Primary                           | LTUC (n = 609)                 | 4.1 (3.5-4.9)                    | Reference                           | Reference                               | Reference                               |
|                                   | UTUC (n = 129)                 | 4.3 (3.2-5.9)                    | 1.05 (0.84-1.32)                    | 0.98 (0.76-1.26)                        | 1.01 (0.81-1.27)                        |
| Subgroup by<br>histology          | Pure LTUC (n = 431)            | 4.1 (3.4-4.9)                    | Reference                           | Reference                               | Reference                               |
|                                   | Pure UTUC (n = 99)             | 4.6 (3.3-6.9)                    | 0.93 (0.72-1.21)                    | 0.83 (0.61-1.12)                        | 0.87 (0.67-1.13)                        |
|                                   | Mixed LTUC (n = 178)           | 4.3 (3.0-7.4)                    | Reference                           | Reference                               | Reference                               |
|                                   | Mixed UTUC (n = 30)            | 2.2 (1.6-5.9)                    | 1.52 (0.98-2.37)                    | 1.55 (0.97-2.49)                        | 1.66 (1.06-2.59)                        |
| Subgroup by<br>line of<br>therapy | First-line LTUC (n = 347)      | 4.6 (3.5-6.3)                    | Reference                           | Reference                               | Reference                               |
|                                   | First-line UTUC (n = 62)       | 4.6 (2.5-8.3)                    | 1.04 (0.75-1.44)                    | 0.85 (0.58-1.25)                        | 1.01 (0.73-1.41)                        |
|                                   | Subsequent-line LTUC (n = 262) | 3.7 (3.0-4.4)                    | Reference                           | Reference                               | Reference                               |
|                                   | Subsequent-line UTUC (n = 67)  | 4.1 (2.8-5.9)                    | 1.04 (0.77-1.42)                    | 0.98 (0.70-1.39)                        | 1.07 (0.79-1.47)                        |

\*in months; HR: hazard ratio; CI: confidence interval; UTUC: upper tract urothelial carcinoma; LTUC: lower tract urothelial carcinoma



bj\_u\_15324\_f1.png





bj\_u\_15324\_f2.png