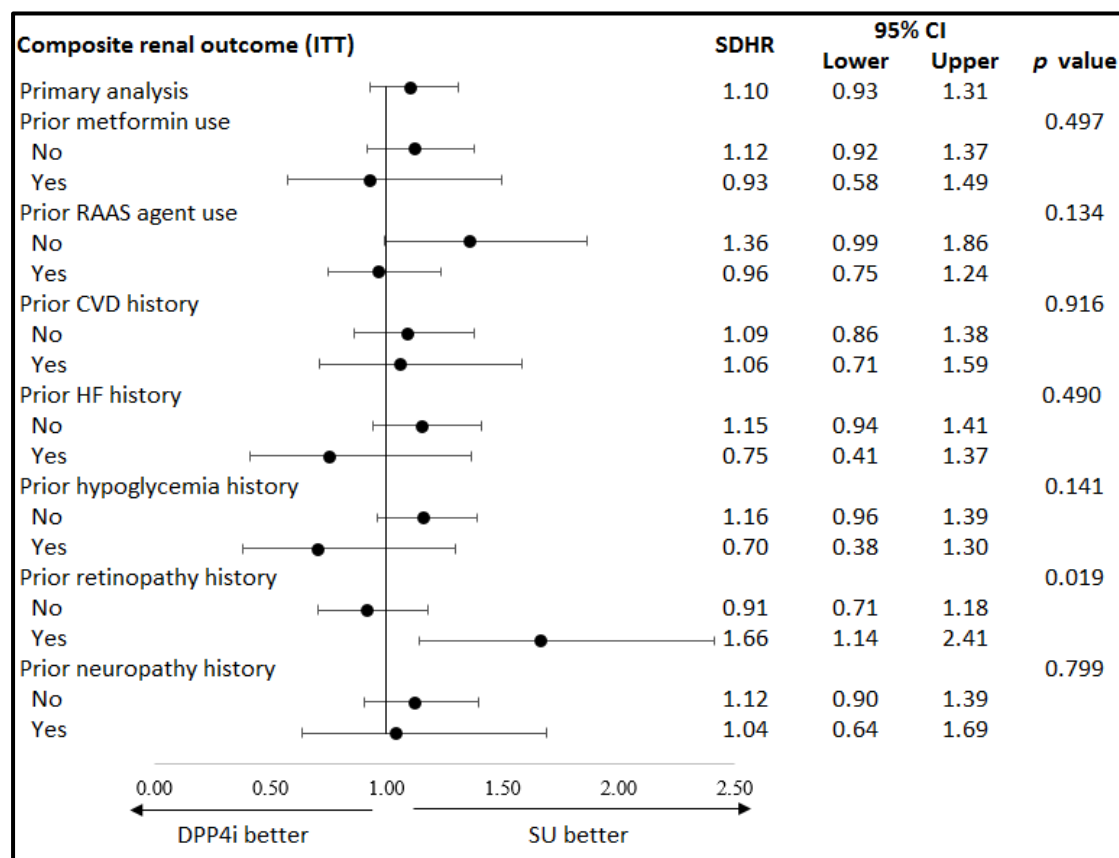


Figure S2: Subgroup analyses of the composite renal outcome associated with use of DPP4is versus SUs under intention-to-treat scenario



Abbreviations: DPP4is, dipeptidyl peptidase-4 inhibitors; SUs, sulfonylureas; ITT, intention-to-treat; SDHR, subdistribution hazard ratio; CI, confidence interval; RAAS, renin-angiotensin-aldosterone system; CVD, cardiovascular disease; HF, heart failure.

Notes:

- (1) All characteristics were measured in the year before or at the initiation of a study drug, except for prior metformin use which was evaluated within 90 days prior to or at the initiation of a study drug.
- (2) *p* value shows the result of statistical testing for the interaction between a given clinical characteristic (e.g., prior use of metformin or not) and treatment status (i.e., DPP4i versus SU) on the study outcome.