

Supplemental Materials

Late Endosomal/Lysosomal Accumulation of a Neurotransmitter Receptor in a Cellular Model of Smith-Lemli-Opitz Syndrome

Ashwani Sharma^{1,2}, G. Aditya Kumar^{1,3}, Amitabha Chattopadhyay^{1,2,*}

¹CSIR-Centre for Cellular and Molecular Biology, Uppal Road, Hyderabad 500 007, India

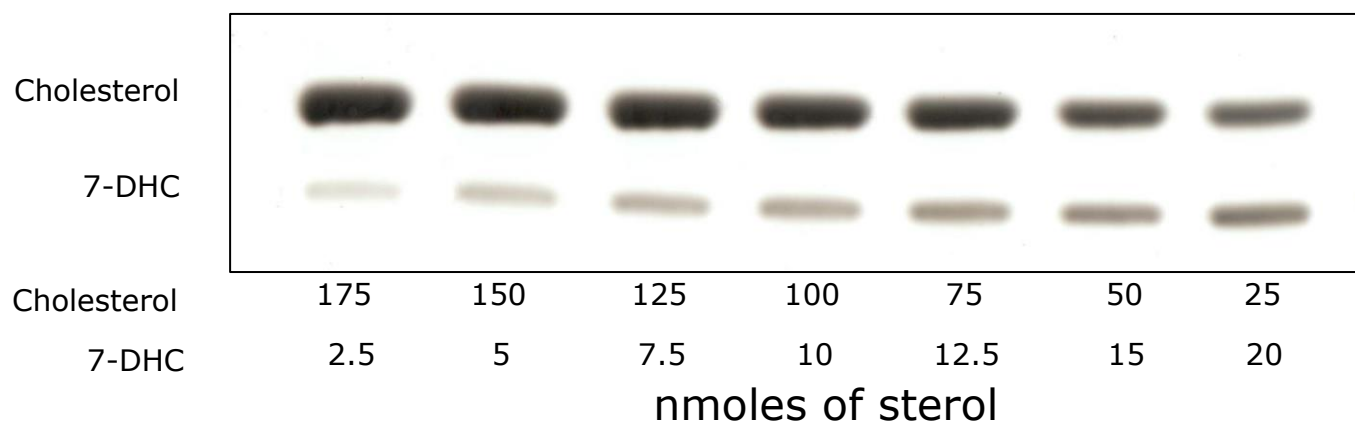
²Academy of Scientific and Innovative Research, Ghaziabad 201 002, India

³Present address: Department of Pharmacology, University of Michigan Medical School, Ann Arbor, MI 48109, USA

*Address correspondence to Amitabha Chattopadhyay, Tel: +91-40-2719-2578, E-mail: amit@ccmb.res.in

Supplemental Figure 1: Calibration plot using a range of cholesterol/7-DHC mixtures

(a)



(b)

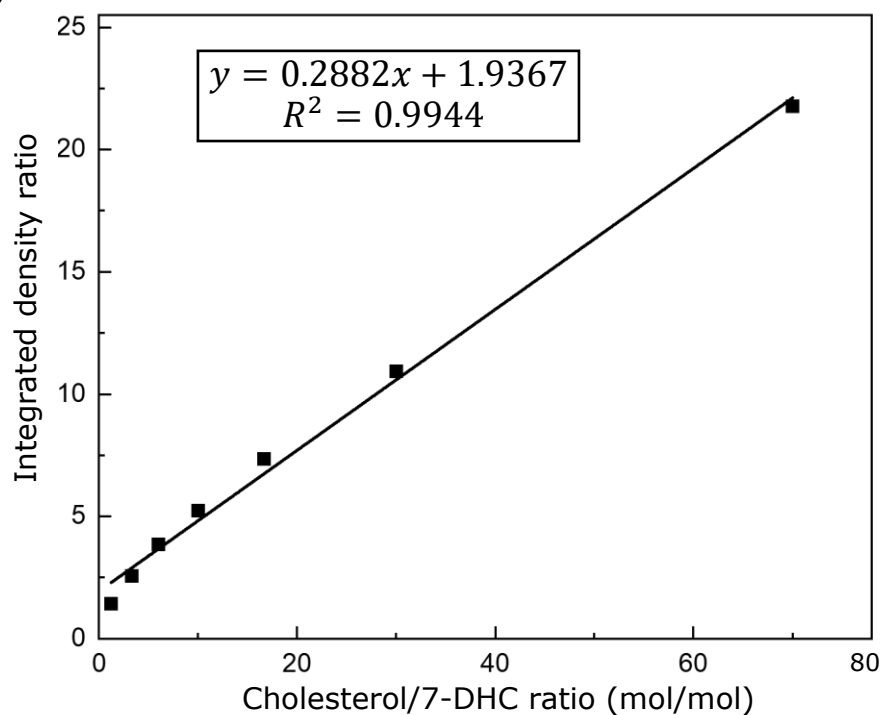


FIGURE S1 Calibration plot using mixtures containing a range of cholesterol/7-DHC (mol/mol) standards. (a) Thin layer chromatogram showing cholesterol and 7-DHC standards mixed in varying molar ratios. (b) Calibration plot prepared as ratios of cholesterol/7-DHC vs. ratios of their integrated densities. Data fitted to a linear equation (equation shown in inset) are shown. Cholesterol/total sterol ratios from AY 9944 treated samples (shown in Figure 1c,d) were determined using this calibration plot.