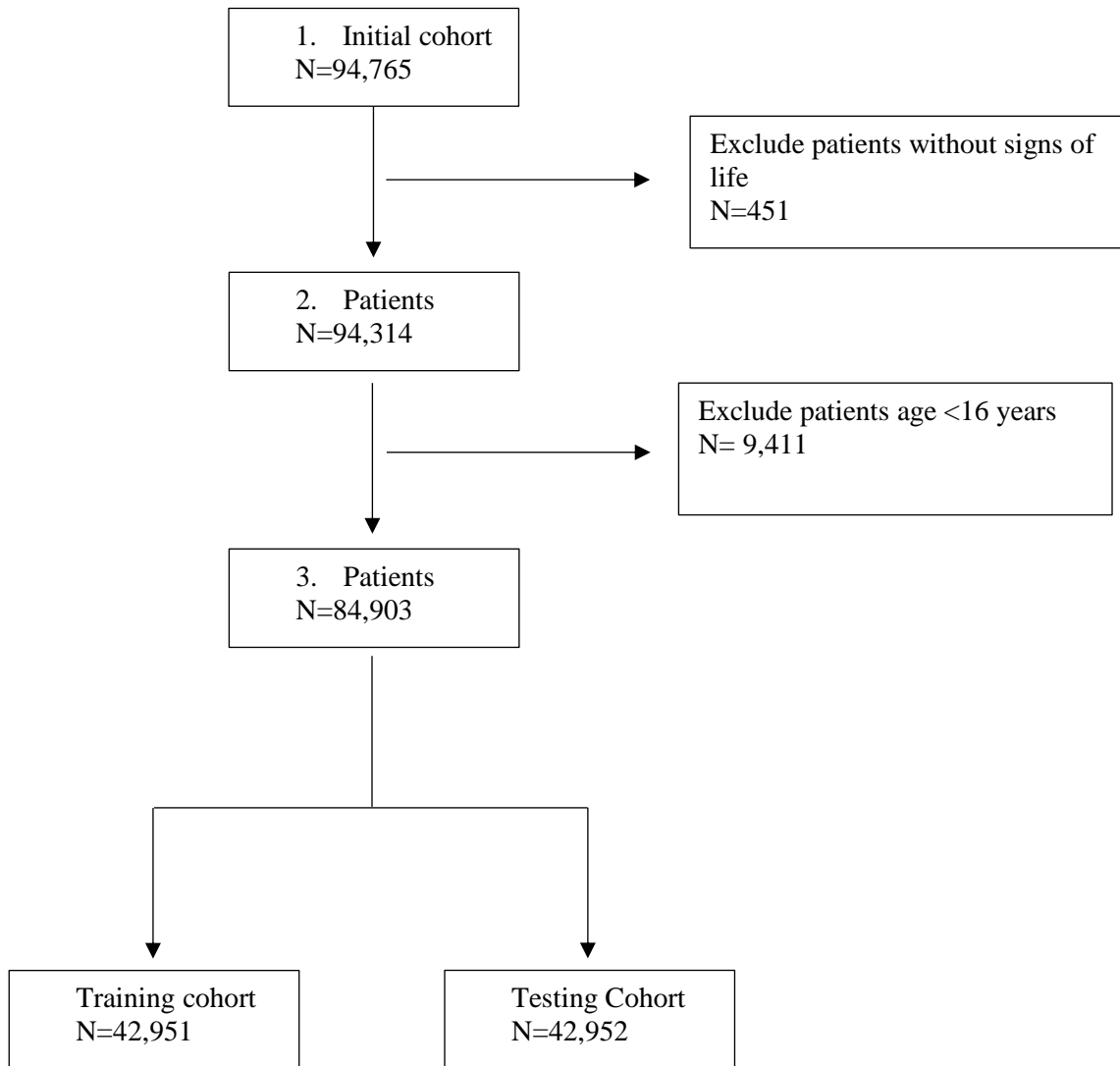


Data Supplement S1. Supplemental material

Figure S1. STROBE Selection of Study Cohort



STROBE flow diagram to identify study cohort. Details about STROBE can be found here: <http://strobe-statement.org/>

Table S1. Percent missingness of variables (No.=84,903).

Variable	Missing, N (%)
Age	17 (0.02)
Race	529 (0.62)
Sex	0 (0)
Payer type	80 (0.09)
Mechanism	2,089 (2.46)
Injury Severity Score	101 (0.12)
Initial Systolic Blood Pressure	3,297 (3.88)
Initial Heart Rate	2,959 (3.49)
Glasgow coma scale	14,280 (16.82)
General hospital beds	0 (0)
Teaching hospital	0 (0)
Non-profit hospital	0 (0)
Urban influence code	0 (0)

Table S2. Comorbidities not included in trauma comorbidity index (TCI) with P-values from bivariate regression of comorbidities present in trauma registry and Charlson and Elixhauser comorbidity index (CCI and ECI) comorbidities not included in the trauma registry with corresponding coefficients.

Comorbidities in trauma registry but not in TCI	<i>p</i> -value	CCI	ECI
Alcohol use disorder	0.934	--	1
Ascites within 30 days	0.428	1	1
Attention deficit disorder	0.317	--	--
Cerebrovascular accident	0.448	1	--
Congenital anomaly	*	--	--
Drug abuse	*	--	--
Esophageal varices	*	--	--
History of angina within 30 days	*	--	--
Obesity	0.607	--	1
Obsessive compulsive disorder	*	--	--
Other	0.722	--	--
Prematurity	*	--	--
Neurologically impaired/ paralysis	*	2	1
Comorbidities in CCI but not in trauma registry			
AIDS/HIV	--	6	1
Cancer	--	1	--
Peptic ulcer disease, excluding bleeding	--	1	1
Rheumatoid disease/collagen vascular diseases	--	1	1
Any malignancy	--	2	1
Comorbidities in ECI but not in trauma registry or CCI			
Anemia	--	--	1
Cardiac arrhythmia	--	--	1
Cardiac, other (congestive heart failure and valvular disease)	--	--	1
Depression	--	--	1
Fluid and electrolyte disorders	--	--	1
Hypothyroidism	--	--	1
Psychosis	--	--	1
Valvular disease	--	--	1
Weight loss	--	--	1

-- Variable not included in index

* * Variable not estimatable (i.e., no mortality observed)