










# Reaching consensus for unified medical language in Fontan care

Tarek Alsaied<sup>1,2</sup> , Rahul H. Rathod<sup>3</sup>, Jamil A. Aboulhosn<sup>4</sup> , Werner Budts<sup>5</sup>, Jeffrey B. Anderson<sup>1</sup>, Helmut Baumgartner<sup>6</sup>, David W. Brown<sup>3</sup>, Rachael Cordina<sup>7</sup>, Yves D'udekem<sup>8</sup> , Salil Ginde<sup>9</sup> , David J. Goldberg<sup>10</sup>, Bryan H. Goldstein<sup>11</sup> , Adam M. Lubert<sup>1</sup> , Erwin Oechslin<sup>12</sup> , Alexander R. Opotowsky<sup>1</sup> , Jack Rychik<sup>10</sup>, Kurt R. Schumacher<sup>13</sup>, Anne Marie Valente<sup>3</sup>, Gail Wright<sup>14</sup>  and Gruschen R. Veldtman<sup>15\*</sup>

<sup>1</sup>Heart Institute, Department of Pediatrics, Pittsburgh Children's Hospital Medical Center, Pittsburgh, PA, USA; <sup>2</sup>Heart Institute, Department of Pediatrics, Cincinnati Children's Hospital Medical Center, Cincinnati, OH, USA; <sup>3</sup>Department of Cardiology, Boston Children's Hospital, Boston, MA, USA; <sup>4</sup>Ahmanson/UCLA Adult Congenital Heart Disease Center, David Geffen School of Medicine at UCLA, Los Angeles, CA, USA; <sup>5</sup>Division of Congenital and Structural Cardiology, University Hospitals Leuven, Leuven, Belgium; <sup>6</sup>Department of Cardiology: Adult Congenital and Valvular Heart Disease, University Hospital Muenster, Muenster, Germany; <sup>7</sup>Adult Congenital Heart Disease Service and Pulmonary Hypertension Service, Royal Prince Alfred Hospital, Sydney, Australia; <sup>8</sup>Department of Cardiac Surgery and Children's National Heart Institute, Children's National Hospital, Washington, DC, USA; <sup>9</sup>Division of Pediatric Cardiology, Department of Pediatrics, Medical College of Wisconsin, Milwaukee, WI, USA; <sup>10</sup>Division of Cardiology, Department of Pediatrics, The Children's Hospital of Philadelphia, Perelman School of Medicine, University of Pennsylvania School of Medicine, Philadelphia, PA, USA; <sup>11</sup>Heart Institute, UPMC Children's Hospital of Pittsburgh, University of Pittsburgh School of Medicine, Pittsburgh, PA, USA; <sup>12</sup>Congenital Cardiac Centre for Adults, Peter Munk Cardiac Centre, University Health Network, Toronto, Canada; <sup>13</sup>Congenital Heart Center, C.S. Mott Children's Hospital, University of Michigan, Ann Arbor, MI, USA; <sup>14</sup>Division of Cardiology, Department of Pediatrics, Stanford University School of Medicine, Santa Clara, CA, USA; and <sup>15</sup>Adult Congenital Heart Disease Service, Heart Centre, King Faisal Specialist Hospital and Research Centre, Riyadh, Saudi Arabia

## Abstract

**Aims** The Fontan operation has resulted in improved survival in patients with single-ventricle congenital heart disease. As a result, there is a growing population of teenagers and adults with a Fontan circulation. Many co-morbidities have been increasingly recognized in this population due to the unique features of the Fontan circulation. Standardization of how Fontan co-morbid conditions are defined will help facilitate understanding, consistency and interpretability of research and clinical experience. Unifying common language usage in Fontan is a critical precursor step for data comparison of research findings and clinical outcomes and ultimately accelerating improvements in management for this growing group of patients. This manuscript aimed to create unified definitions for morbidities seen after the Fontan palliation.

**Methods** In association of many congenital heart disease organizations, this work used Delphi methodology to reach a broad consensus among recognized experts regarding commonly used terms in Fontan care and research. Each definition underwent at least three rounds of revisions to reach a final definition through surveys sent to experts in the field of single-ventricle care.

**Results** The process of reaching a consensus on multiple morbidities associated with the Fontan procedure is summarized in this manuscript. The different versions that preceded reaching the consensus are also presented in the Supporting Information. *Table 1* represents the final definitions according to the consensus.

**Conclusions** We propose the use of these definitions for clinical care, future research studies, registry development and clinical trials.

**Keywords** Fontan; Single ventricle; Congenital heart disease; Cirrhosis; Portal hypertension; Consensus

Received: 1 December 2020; Revised: 3 February 2021; Accepted: 19 February 2021

\*Correspondence to: Gruschen R. Veldtman, Adult Congenital Heart Disease Service, Heart Centre, King Faisal Specialist Hospital and Research Centre, Makkah Al Mukarramah Branch Rd, Al Mathar Ash Shamali, 11564 Riyadh, Saudi Arabia. Email: gruschen@me.com

Tarek Alsaied and Rahul H. Rathod contributed equally to this work and are considered first authors. Author names are presented in alphabetical order except for the first two authors and the last author.

## Introduction

Since its introduction in 1969, the Fontan procedure has transformed the lives of many patients with single-ventricle

physiology, offering them the potential for survival and improved quality of life well into adulthood.<sup>1</sup> The original procedure was described by Fontan in patients with tricuspid atresia.<sup>2</sup> Indications for the operation have expanded over

time to include all other types of single ventricle, with incremental modifications and better outcomes.<sup>2</sup> The procedure connects the systemic veins directly to the branch pulmonary arteries. Thus, the systemic venous blood flows passively to the lungs without a sub-pulmonary ventricle.<sup>3,4</sup> The procedure now is performed in almost all patients born with single-ventricle congenital heart disease at an age between 2 and 5 years. Good Fontan candidates have good systolic ventricular function, atrioventricular valve function and sinus rhythm. Before the procedure, the patient undergoes a haemodynamic evaluation with cardiac catheterization to ensure low ventricular filling pressure, low pulmonary vascular resistance (PVR) and adequate pulmonary arteries.<sup>3,4</sup>

It is estimated that there are 70 000 patients alive with a Fontan circulation worldwide. The circulation is characterized by an elevated central venous pressure due to connection with the pulmonary arteries and a low cardiac output.<sup>3–5</sup> As more patients with a Fontan circulation reach adulthood, a variety of cardiac and non-cardiac complications involving almost every organ system are increasingly common, presenting significant management challenges.<sup>3,4</sup> Early recognition may be important to address potential haemodynamic causes and potentially prevent the progression of life-threatening extra-cardiac disease.<sup>5</sup> Many different terms have been used to describe disease states associated with the Fontan circulation, often without explicit definition that has created confusion and uncertainty. Standardization of how Fontan associated morbidities are defined will help facilitate understanding, consistency and interpretability of research and clinical experience.<sup>6,7</sup> Additionally, standardized definitions will allow direct comparison between clinical studies and aggregation of trial and registry datasets.<sup>8</sup> The present consensus statement proposes standardized definitions for a set of comorbid conditions commonly associated with the Fontan circulation. We present a brief summary of the available literature before each definition.

## Methods and evidence review

In association with leading organizations and initiatives (Alliance of Adult Research in Congenital Cardiology [AARCC], the International Society for Adult Congenital Heart Disease [ISACHD], the National Paediatric Cardiology Quality Improvement Collaborative [NPC-QIC], The Fontan Outcomes Network [FON], Fontan Outcomes Registry using CMR Examinations [FORCE] and the International Fontan Interest Group [IFIG]), we applied the University of California Los Angeles/RAND modified Delphi methodology to arrive at definitions for a set of predetermined common Fontan-related diagnoses.<sup>9,10</sup>

In summary, in order for a term to make it through this entire process, each definition underwent at least three rounds of revisions. The initial draft of this document was circulated

to the above organizations for approval, and suggestions were incorporated in the document without changing the consensus definitions. The final definitions are summarized in *Table 1*, and the percentage of agreement through the three stages of consensus is summarized in the supporting information table. The process is summarized in *Figure 1*, and the Delphi methodology is summarized in *Figure 2* and the Supporting Information.

## Terms and definitions

### Fontan circulatory failure

Fontan circulatory failure (FCF) is a broad, non-specific term commonly used to indicate deteriorating clinical status.<sup>11,12</sup> Published studies have variably used FCF as a composite endpoint to include death, transplantation or listing for transplantation.<sup>11,13</sup> Additionally, the development of patient-experienced exercise intolerance, inability to carry out daily life activities and Fontan takedown have sometimes been included in the definition of FCF.<sup>2,14–16</sup> Other variables included within the spectrum of FCF were heart failure symptoms and other co-morbidities including arrhythmias, thromboembolism, protein-losing enteropathy (PLE), plastic bronchitis (PB), oedema, persistent effusions and liver dysfunction.<sup>15,17,18</sup> The causes of FCF are similarly diverse and can include systolic or diastolic ventricular dysfunction, valve disease, elevated PVR, chronic arrhythmia, Fontan-associated liver disease (FALD) or lymphatic insufficiency (PLE, ascites and PB).<sup>14,19</sup> As the aetiology of FCF is heterogeneous and ‘heart or pump failure’ is only seen in some of the cases, we avoided the term heart failure. This is similar to the term respiratory failure rather than lung failure used in pulmonary medicine as lung failure is a narrow term and capture only a portion of all cases. The consensus definition is below.

“A broad, non-specific term describing dysfunction of the Fontan circulation that affects a patient’s ability to carry out daily life activities. Etiology may include ventricular dysfunction, atrioventricular valve failure, increased pulmonary vascular resistance, recurrent arrhythmia, Fontan pathway obstruction, lymphatic insufficiency, or end-organ dysfunction. Symptoms may be related to heart failure, Fontan pathway obstruction, hypoxemia or end-organ dysfunction including liver disease, protein-losing enteropathy, and plastic bronchitis. Severe Fontan circulatory failure is defined as a composite of mortality, listing for heart transplantation, Fontan takedown, or the decision to initiate palliative care due to lack of candidacy for heart transplantation.”

**Table 1** Terms and definitions for patients with a Fontan circulation

Term	Definition
Fontan circulatory failure	A broad, non-specific term describing dysfunction of the Fontan circulation that affects a patient's ability to carry out daily life activities. Aetiology may include ventricular dysfunction, atrioventricular valve failure, increased pulmonary vascular resistance, recurrent arrhythmia, Fontan pathway obstruction, lymphatic insufficiency or end-organ dysfunction. Symptoms may be related to heart failure, hypoxaemia or end-organ dysfunction including liver disease, protein-losing enteropathy and plastic bronchitis. Severe Fontan circulatory failure is defined as a composite of mortality, listing for heart transplantation, Fontan takedown or the decision to initiate palliative care due to lack of candidacy for heart transplantation
Fontan takedown	The deconstruction of one or more of the Fontan connections to partial cavo-pulmonary anastomosis and/or an aorto-pulmonary shunt due to Fontan circulatory failure
Systolic dysfunction	The presence of single-ventricle ejection fraction < 50%. Severe single-ventricle systolic dysfunction is defined as an ejection fraction < 30%
Diastolic dysfunction	A state of decreased single-ventricle compliance leading to increased filling pressures. An end-diastolic pressure or pulmonary capillary wedge pressure $\geq 12$ mmHg at rest or $\geq 15$ mmHg after rapid volume expansion is suggestive of diastolic dysfunction
Fontan pathway obstruction	An anatomical or functional narrowing detected by catheterization or cross-sectional imaging anywhere in the cavo-pulmonary pathways. This may or may not manifest with flow discrepancy on cardiac MRI or haemodynamic perturbation with a gradient as low as 1 mmHg at cardiac catheterization
Elevated pulmonary vascular resistance	Pulmonary vascular resistance (PVR) above 2 indexed Wood units (Wood units * $m^2$ body surface area) in individuals with normal or near-normal body surface area (BSA). In individuals with extremes of BSA, no data currently exist for the Fontan circulation, but the clinically applied cut-off is $>2.3$ Wood units, a value that has been considered to indicate poor outcomes in the context of biventricular circulations
Sustained atrial or ventricular tachycardia	An atrial or ventricular rate of more than 100 beats per minute in adults, or two standard deviations above the mean in children, lasting for more than 30 s, or $<30$ s if associated with haemodynamic instability, or of any duration, if arrhythmia therapy is used. This definition excludes sinus tachycardia. Atrial and ventricular tachycardia should be categorized separately
Bradycardia	Heart rate below 50 beats per minute in adults or below the 5th percentile for age in children
Lymphatic insufficiency	Any abnormality in the form or function of the lymphatic system resulting in a clinical disease state. Depending on the location of the lymphatic vessel decompression, lymphatic insufficiency may manifest variably as protein-losing enteropathy, plastic bronchitis, ascites or pleural effusion
Plastic bronchitis	A pulmonary lymphatic disorder characterized by the leakage of proteinaceous material into the airways, resulting in episodic expectoration or bronchoscopic visualization of bronchial shaped casts that can be associated with respiratory distress, wheezing or significant airway obstruction
Protein-losing enteropathy	The state of increased enteric protein loss (as measured by faecal $\alpha 1$ antitrypsin [spot $> 54$ mg/dL, $\alpha 1$ antitrypsin clearance $> 27$ mL/24 h without diarrhoea and $>56$ mL/24 h with diarrhoea] or by nuclear scintigraphy using technetium-99m-labelled albumin). It can be subclinical or associated with (1) hypoalbuminaemia $< 3.5$ g/dL and total protein $< 6$ g/dL and (2) any of the following clinical symptoms: edema, abdominal distention or discomfort, diarrhoea or effusions (ascites, pleural or pericardial effusions)
Low exercise performance	Peak $VO_2$ below 50% of the predicted value for the general non-affected population of equivalent age, sex and body size on a symptom-limited maximal exercise test. High performance is considered present when peak $VO_2$ is above 80% of predicted values
Fontan-associated liver disease (FALD)	The broad spectrum of liver disease and its consequences, attributable to Fontan haemodynamics. FALD includes varying degrees of hepatic fibrosis, compensated and decompensated cirrhosis, focal nodular hyperplasia, laboratory evidence of hepatic injury or impaired synthetic function and hepatocellular neoplastic lesions
Cirrhosis	A histologic diagnosis defined by bridging fibrosis and nodular regeneration. Although defined by histology, the diagnosis can be strongly suggested by radiological assessment (e.g. nodular liver contour, features of portal hypertension such as splenomegaly, collateral vessels, ascites and significantly elevated liver stiffness using ultrasound or magnetic resonance). Clinical features supporting the presence of cirrhosis include signs of (1) vasodilation, such as spider naevi and palmar erythema, and (2) portal hypertension, such as varices bleeding, ascites or portosystemic shunting including encephalopathy. Laboratory findings often observed with cirrhosis include elevated liver enzymes, bilirubin and prothrombin time, with low platelet count and albumin, in the absence of protein-losing enteropathy
Portal hypertension	Portal hypertension is intrinsic to the Fontan circulation, as portal pressure is inherently elevated due to the high suprahepatic central venous pressures. Though rare, in some cases, it can have an intrahepatic component. Portal hypertension can be clinically silent or present as any combination of splenomegaly, ascites, varices and thrombocytopenia

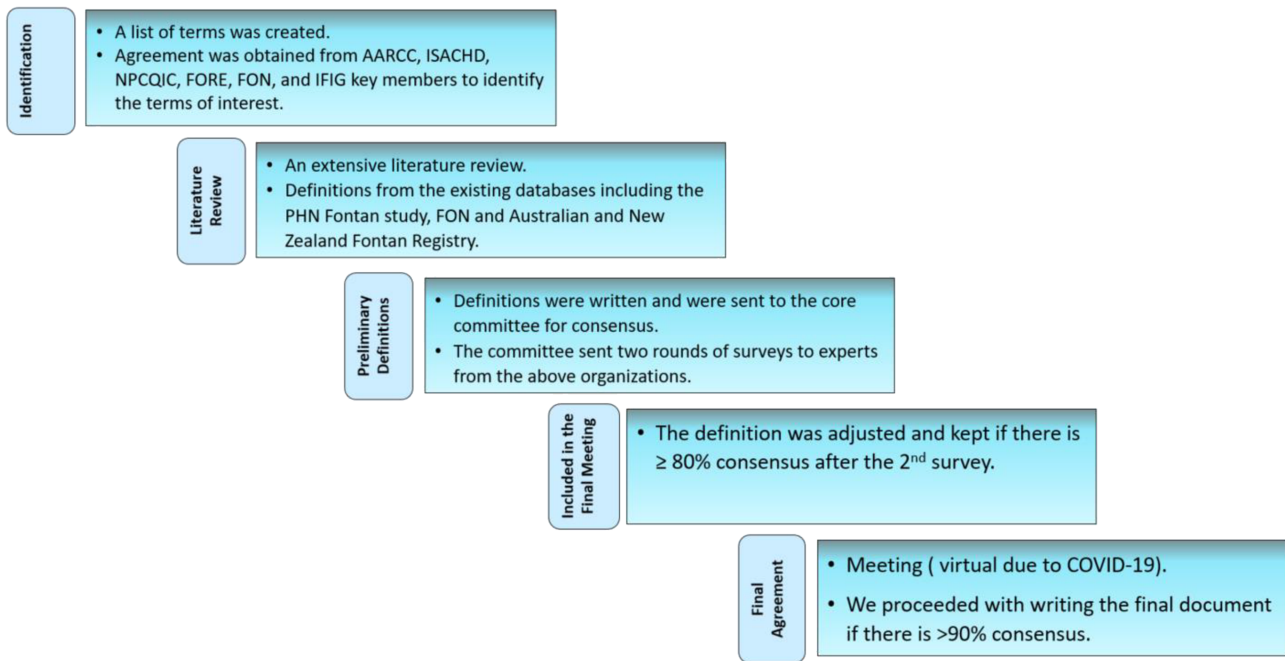
$VO_2$ , oxygen consumption; MRI, magnetic resonance imaging.

## Fontan takedown

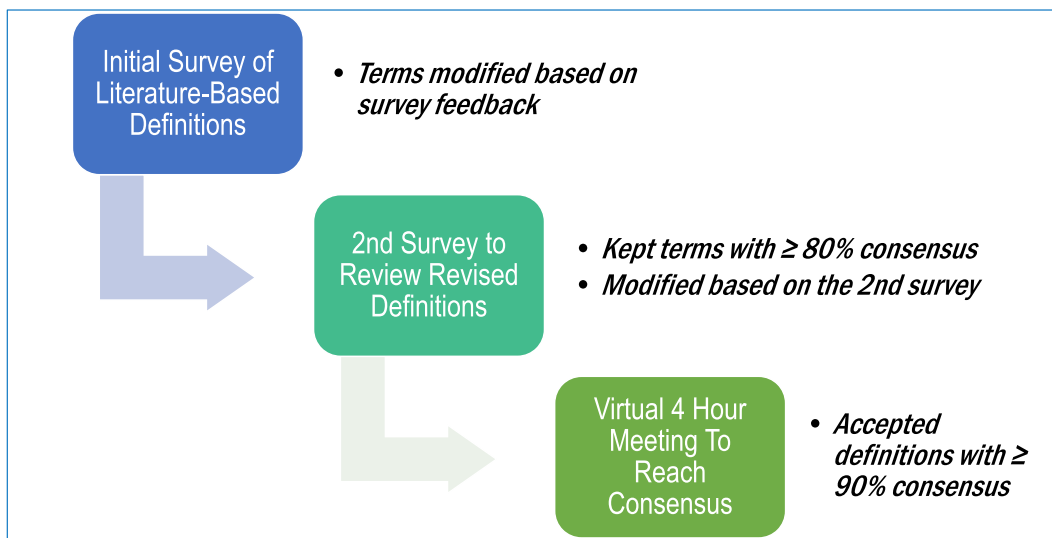
Fontan takedown to an intermediate palliative circulation is an important treatment option for patients with FCF.<sup>16</sup> The majority of Fontan takedown procedures are

performed in the perioperative period after the Fontan operation to manage early FCF. Occasionally, Fontan takedown has been used as a strategy for late FCF years after the initial Fontan surgery.<sup>16,20</sup> In some cases, creating a fenestration or enlarging an existing fenestration

**Figure 1** Steps in the process to reach consensus on standardized definitions.



**Figure 2** Steps in Delphi methodology.



may provide symptomatic improvement. In more severe cases, Fontan takedown usually includes reversion to a superior cavopulmonary connection, with or without an additional aorto-pulmonary shunt.<sup>20,21</sup> This procedure carries a high perioperative morbidity and mortality as the haemodynamics and clinical state of the patient at the time of undergoing surgery are usually markedly deranged.<sup>16,20</sup> Despite these concerns, Fontan takedown

can, in selected cases, effectively stabilize clinical status and act as a bridge to transplantation or provide time for rehabilitation and recovery prior to reattempting the Fontan procedure.<sup>20</sup> The consensus definition is below.

“The deconstruction of one or more of the Fontan connections to partial cavo-pulmonary anastomosis

and/or an aorto-pulmonary shunt due to Fontan circulatory failure.”

### Systolic ventricular dysfunction

A progressive decrease in ventricular systolic function was recognized as an important concern after the Fontan procedure.<sup>19,22</sup> The low ejection fraction can be related to altered preload without intrinsic ventricular dysfunction in some patients that may explain the lack of response to inotropes in such cases. Accurate evaluation of ventricular systolic function in patients with Fontan circulation by echocardiography remains challenging, and qualitative assessment is standard in many institutions given the heterogeneity of ventricular geometry in these patients. Contemporary techniques, including myocardial speckle tracking strain (deformation) imaging, may prove to be a helpful adjunct in evaluating myocardial function.<sup>23,24</sup> The complex three-dimensional cardiac anatomy and the frequency of limited acoustic windows make cardiac magnetic resonance imaging (MRI) a gold standard to evaluate ventricular function in patients with a Fontan circulation.<sup>24,25</sup> Many adults with a Fontan circulation have a low resting cardiac index and reduced end-systolic ventricular elastance.<sup>26</sup> Older age at the time of the evaluation and older age at Fontan seem to correspond to a higher risk for the development of systolic dysfunction in this patient population.<sup>27</sup> Once systolic dysfunction develops, and if severe enough, it may result in low cardiac output and symptoms of FCF.<sup>14</sup> The consensus definition is below.

“The presence of single ventricle ejection fraction <50%. Severe single ventricle systolic dysfunction is defined as an ejection fraction <30%.”

### Diastolic dysfunction

Whereas systolic function can be preserved late after the Fontan operation, diastolic dysfunction is relatively common and may play a substantial role in morbidity.<sup>28–30</sup> The chronic preload insufficiency may result in myocardial remodelling, increased ventricular stiffness, increased filling pressures and eventually a progressive decline in cardiac output.<sup>31–33</sup> Not surprisingly, compliance and relaxation abnormalities in the single ventricle have been documented after the Fontan operation.<sup>29</sup>

It is likely that diastolic function abnormalities start as a secondary phenomenon due to altered preload and then progresses into more advanced stage with elevated filling pressures. Why only some patients develop diastolic dysfunction and elevated end-diastolic pressures is likely multifactorial, but a genetic component may be contributory.<sup>34</sup> Evidence

of diastolic abnormality may be detected in up to 68% of patients with a Fontan circulation at a mean age of ~12 years using echocardiographic criteria normally applied to biventricular hearts.<sup>35,36</sup> It has yet to be confirmed, however, whether these Doppler patterns predict filling pressures of the systemic ventricle. Feature tracking deformation (strain) imaging may prove helpful in detecting diastolic dysfunction in this patient population.<sup>37,38</sup> At the moment, direct measurement of ventricular end-diastolic pressure remains the gold standard for the evaluation of diastolic dysfunction.<sup>39,40</sup> Various studies have suggested >10 or 12 mmHg as defining an elevated end-diastolic pressure, with the recent emergence of the potential role for provocative testing (fluid challenge) to help identify patients with occult diastolic dysfunction.<sup>19,40,41</sup> Data on the haemodynamic definition, however, are sparse, and further research is needed to provide more definitive guidance on specific cut-offs and best options for provocative testing. The consensus definition is below.

“A state of decreased single ventricle compliance leading to increased filling pressures. An end-diastolic pressure or pulmonary capillary wedge pressure  $\geq$  12 mm Hg at rest or  $\geq$  15 mmHg after rapid volume expansion is suggestive of diastolic dysfunction.”

### Fontan pathway obstruction

An unobstructed Fontan pathway is essential for optimal Fontan haemodynamics.<sup>42,43</sup> Obstruction in the Fontan pathway can happen at any level from the vena cavae to the branch pulmonary arteries.<sup>42</sup> Some common locations include the inferior limb of the Fontan baffle, the lateral tunnel or extra-cardiac conduit and the branch pulmonary arteries. The left pulmonary artery (LPA) can become compressed by the aortic root or ascending aorta, especially in patients with hypoplastic left heart syndrome (HLHS).<sup>44</sup> Right pulmonary artery (RPA) torsion may be associated with the use of an extra-cardiac conduit for Fontan completion.<sup>45</sup> Fontan baffle obstruction and branch pulmonary artery stenosis or compression may result in elevated Fontan baffle pressures and are associated with worse exercise capacity.<sup>46</sup> Obstruction in the Fontan circuit may be associated with significant power loss and may expose the abdominal viscera, especially the liver, to a greater congestive burden. Previous elegant work using computational flow dynamics showed that power loss correlates with the minimum cross-sectional area of the pulmonary arteries in Fontan circulations.<sup>47,48</sup> Stent implantation in the Fontan conduit and lateral tunnel baffle to eliminate obstruction has been reported to optimize haemodynamics with few side effects.<sup>42,49</sup> The consensus definition is below.

“An anatomical or functional narrowing detected by catheterization or cross-sectional imaging anywhere in the cavo-pulmonary pathways. This may or may not manifest with flow discrepancy on cardiac MRI or hemodynamic perturbation with a gradient as low as 1 mmHg at cardiac catheterization.”

### Elevated pulmonary vascular resistance

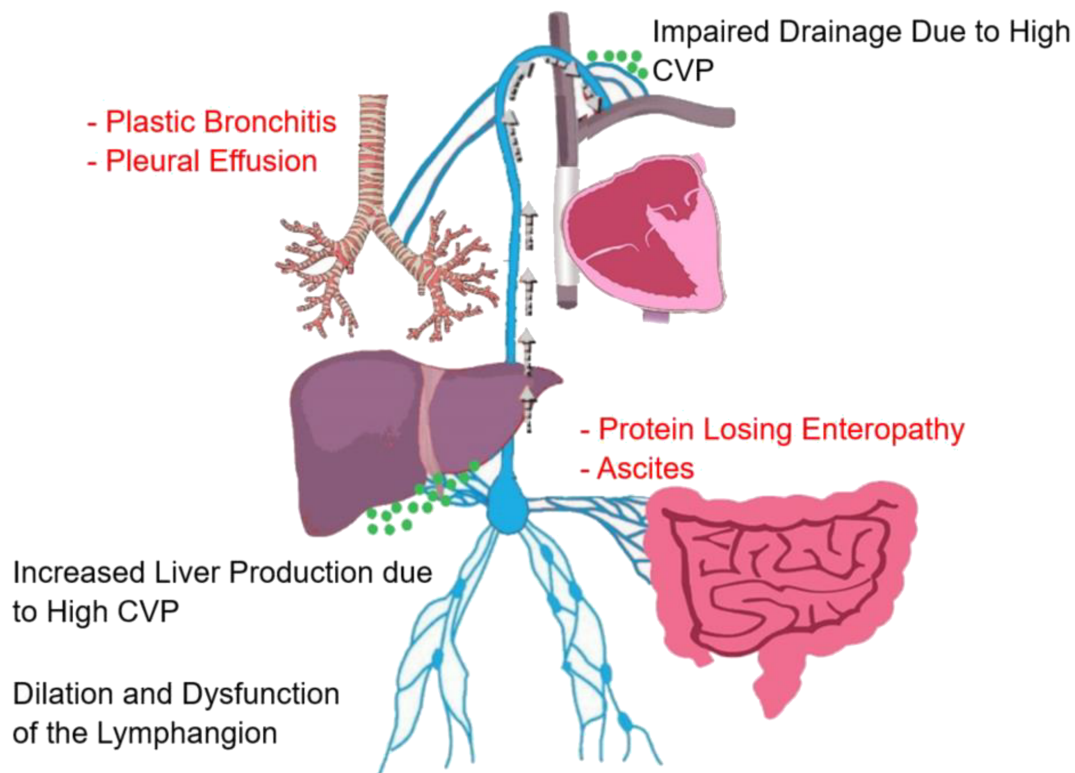
Growth, development and regulation of the pulmonary vasculature are inherently abnormal in patients with single-ventricle physiology. Reduced pulmonary blood flow can start in fetal life and continues after Glenn and Fontan palliation.<sup>31,32</sup> Pulsatile flow is often absent after completion of the superior cavopulmonary connection.<sup>31,50</sup> However, even before the loss of pulsatility, significant regional maldistribution of pulmonary blood flow may occur due to abnormal connections, ductal constriction, external compression or local alterations in small vessels, resulting in heterogeneous vascular resistance.<sup>51</sup> Further, the normal vasodilatory mechanisms may be suppressed due to the absence of pulsatile blood flow and the effect of gravity on venous return to the lungs, which may only become evident during

exertion.<sup>52,53</sup> The resultant physiology, the relatively low flow and low pressure system, the presence of multiple sources of pulmonary blood flow and high prevalence of arteriovenous malformations together make it challenging to assess pulmonary resistance. Further larger-scale data are needed to define expected findings in resting PVR and pressure–flow relationships in the pulmonary circulation in the absence of a right ventricle and to define the relationship between PVR and clinical outcomes.<sup>50,51</sup>

The existing small retrospective and prospective published series have consistently reported worse outcomes when resting PVR exceeded 2 indexed Wood units.<sup>13,54,55</sup> There are currently no published data using non-indexed PVR in patients with a Fontan circulation. The consensus definition is below.

“Pulmonary vascular resistance (PVR) above 2 indexed Wood units (Wood units \* m<sup>2</sup> body surface area) in individuals with normal or near normal body surface area (BSA). In individuals with extremes of BSA, no data currently exist for the Fontan circulation, but the clinically applied cut-off is > 2.3WU, a value which has been considered to indicate poor outcomes in the context of biventricular circulations.”

**Figure 3** Lymphatic insufficiency in Fontan. The pathophysiology of the lymphatic insufficiency (black font) is increased central venous pressure (CVP), leading to increased lymphatic production from the liver and impaired lymphatic drainage. This leads to dilation and dysfunction of the lymphangion. Depending on the location for lymphatic decompression, a disease state may occur (red colour). The green dots represent the lymphatic drainage.



## Lymphatic insufficiency

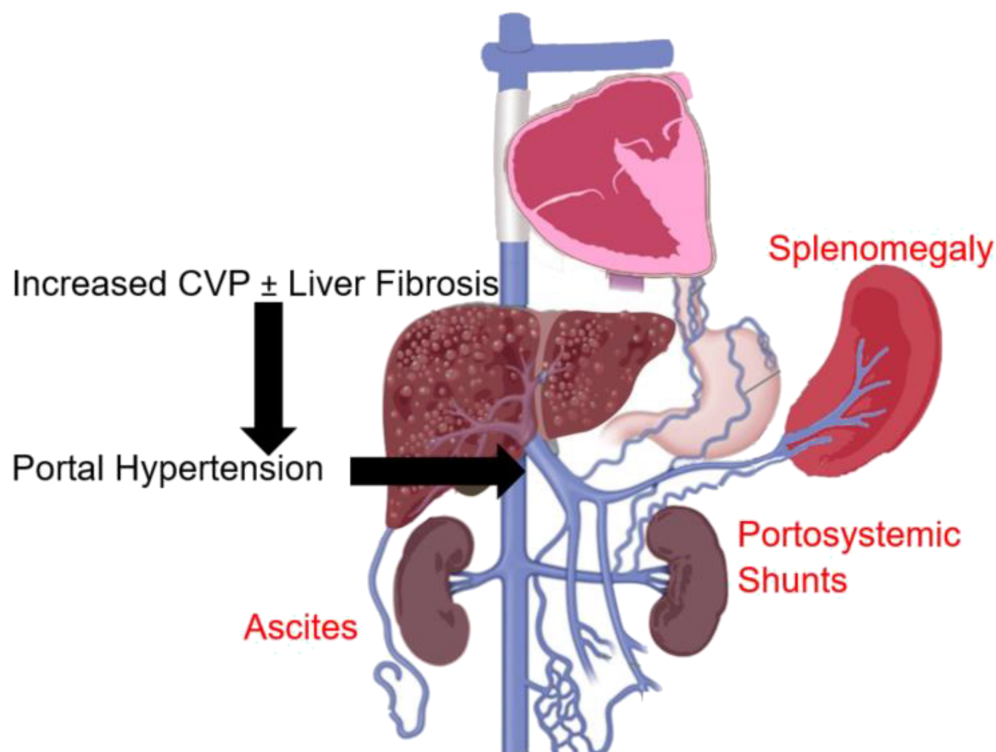
The pathophysiology of PLE and PB is intricately related to lymphatic system abnormalities<sup>56,57</sup> (Figure 3). Elevated venous pressure at the microcirculation level results in increased lymphatic production. Chronic severe lymphatic overload may cause pathologic dilation and consequent dysfunction of the lymphangion, the functional unit of the lymphatic system. Proximal drainage from the lymphatic system into the venous circulation may become impaired due to high central venous pressures, and physical obstruction due to stenosis at the lympho-venous connections causing exit block from the lymphatic circulation or from impaired contractile function of the lymphangion.<sup>58</sup> This leads to focal sites of abnormal lymphatic drainage and lymphatic proliferation due to increased lymphangiogenesis signalling.<sup>59</sup> Lympho-venous channels abound in the lymphatic circulation, and anatomic variation of such lympho-venous connections together with lymphatic rupture to lower pressure compartments determines specific clinical phenotypes of lymphatic insufficiency. Lymph effluent usually drains proximally at the level of the innominate vein into the central venous circulation. However, a considerable variation of these proximal connections has been documented, and prior cardiac surgical intervention has been associated with impaired or obstructed lymphatic drainage to the

venous system.<sup>56,60,61</sup> Decompressing lymph drainage into the pleural cavity results in chylous pleural effusion, drainage into the peritoneal cavity causes ascites, into the bronchial tree (PB), into the bowels (PLE) and into a specific limb, lymphedema praecox.<sup>62</sup> Importantly, there are many causes of ascites or pleural effusion in the Fontan circulation, and the presence of these findings does not necessarily indicate that lymphatic insufficiency is the primary cause (Figure 4).

Imaging the lymphatic system remains challenging, but T2-weighted MRI techniques are promising.<sup>63,64</sup> An improved understanding of lymphatic anatomy and the development of catheter-based lymphatic interventions to embolize abnormal channels may result in significant improvement in the management of PB and some cases of PLE.<sup>64,65</sup> Additionally, diverting the lymphatic drainage of the thoracic duct to a lower pressure compartment (e.g. the systemic atrium) may alleviate symptoms of PLE and PB.<sup>57,66–68</sup> The consensus definition is below.

“Any abnormality in the form or function of the lymphatic system resulting in a clinical disease state. Depending on the location of the lymphatic vessel decompression, lymphatic insufficiency may manifest variably as protein-losing enteropathy, plastic bronchitis, ascites or pleural effusion.”

**Figure 4** Portal hypertension in Fontan results from increased central venous pressure (CVP) with or without hepatic fibrosis (black font). Portal hypertension leads to splenomegaly, variceal ‘portosystemic shunts’ and ascites.



## Plastic bronchitis

PB is a serious complication of the Fontan circulation, occurring in 1%–4% of patients.<sup>69–71</sup> Risk factors include post-operative prolonged pleural effusions or ascites.<sup>72</sup> The pathophysiology is thought to be related to abnormal lymphatic drainage around the airways.<sup>61</sup> The disease may manifest as episodic expectoration of bronchial-shaped casts or visualization of these on bronchoscopy; this can cause wheezing and respiratory distress. Acute airway obstruction can be life threatening and may lead to suffocation, hypoxaemia and death. The consensus definition is below.

“A pulmonary lymphatic disorder characterized by the leakage of proteinaceous material into the airways, resulting in episodic expectoration or bronchoscopic visualization of bronchial shaped casts that can be associated with respiratory distress, wheezing or significant airway obstruction”

## Protein-losing enteropathy

PLE is a major cause of morbidity and mortality after the Fontan operation.<sup>61,73,74</sup> The prevalence is thought to be between 3% and 18% and can occur at any point after the Fontan operation.<sup>61,75</sup> The causes are poorly understood but likely include a combination of high venous pressure, abnormal mesenteric circulation, gut inflammation and abnormal lymphatic flow.<sup>60,76</sup> Though PLE is often progressive, some patients have a waxing-and-waning course. Many patients exhibit a preclinical phase with protein loss, but without any symptoms or hypoalbuminaemia. Remission can occur, with the only manifestation of prior PLE being either hypoalbuminaemia or abnormally high enteric protein loss. The consensus definition is below.

“The state of increased enteric protein loss [as measured by fecal  $\alpha$ 1 antitrypsin (spot > 54 mg/dl,  $\alpha$ 1 antitrypsin clearance > 27 ml/24 hours without diarrhea and > 56 ml/24 hours with diarrhea) or by nuclear scintigraphy using technetium-99m labeled albumin]. It can be subclinical or associated with 1) hypoalbuminemia < 3.5 g/dl, and total protein < 6 g/dl and 2) any of the following clinical symptoms: edema, abdominal distention or discomfort, diarrhea, or effusions (ascites, pleural or pericardial effusions).”

## Low exercise performance

Although Fontan completion may result in improved exercise capacity, as measured by peak oxygen consumption

( $\text{VO}_2$ ), patients with Fontan circulation generally have markedly reduced exercise capacity.<sup>77</sup> Most studies report a mean peak  $\text{VO}_2$  of 48%–65% of what would be predicted for age, sex and weight.<sup>78–81</sup> Decreased exercise capacity in patients with Fontan circulation is attributed to a blunted increase in stroke volume with exercise due to limited venous return, presumably due to a bottleneck in the pulmonary circulation.<sup>82</sup> Other factors include the inability to appropriately increase heart rate and systemic arterial desaturation. Further, the Fontan circulation is associated with decreased muscle mass, which may affect exercise capacity as it may decrease the ability to augment preload during exercise or to use oxygen during exercise.<sup>83,84</sup> Decreased exercise capacity is associated with increased mortality in patients with a Fontan circulation.<sup>79,81,85,86</sup> Extremely low peak  $\text{VO}_2$  in patients with a Fontan circulation (peak  $\text{VO}_2$  below 16.6 mL/kg/min) is an important mortality predictor.<sup>85,87</sup> Additionally, a decline in peak  $\text{VO}_2$  over time is also an important predictor of death and transplantation.<sup>88,89</sup> Peak heart rate and heart rate reserve may also provide prognostic information.<sup>85,86</sup> The consensus definition is below.

“Peak  $\text{VO}_2$  below 50% of the predicted value for the general non-affected population of equivalent age, sex, and body size on a symptom-limited maximal exercise test. High performance is considered present when peak  $\text{VO}_2$  is above 80% of predicted values.”

## Fontan-associated liver disease

FALD is a major non-cardiac complication of the Fontan circulation, which may lead to substantial morbidity and early mortality.<sup>4</sup> The aetiology of FALD remains unclear, with elevated central venous pressure and possibly abnormal liver lymphatic drainage as important contributors.<sup>90</sup> Liver fibrosis is ubiquitous in adult patients with a Fontan circulation, and about two-thirds have severe fibrosis.<sup>91</sup> Some risk factors recognized in previous studies included older age, longer time since the Fontan completion and perioperative insults.<sup>4,12,91,92</sup> Weight control to prevent steatohepatitis, avoiding alcohol and hepatotoxic medication avoidance and vaccination against hepatitis may help slow progression of FALD. Recent expert guidance includes screening for liver disease every 3–5 years in childhood and every 1–2 years in adolescents using laboratory screening,<sup>4</sup> though there have been no empirical studies evaluating the benefit of any particular approach to liver evaluation. Abdominal ultrasound is reasonable at baseline and referral to hepatology should be considered in patients with abnormal screening results.<sup>4,90,93</sup> In addition, abdominal cross-sectional imaging using MRI and computerized tomography (CT) scan is an important tool to screen for liver lesions.<sup>94</sup>



The consensus definition is below.

“The broad spectrum of liver disease and its consequences, attributable to Fontan hemodynamics. FALD includes varying degrees of hepatic fibrosis, compensated and decompensated cirrhosis, focal nodular hyperplasia, laboratory evidence of hepatic injury or impaired synthetic function, and hepatocellular neoplastic lesions.”

Please refer to the Supporting Information for the complete list of definitions and the steps taken to reach consensus on each definition. A complete list of references are also presented.

## Conclusion

The above terms and definitions represent the consensus of a large panel of experts in single-ventricle physiology and selected-non-cardiac specialties. We propose utilizing these definitions for clinical care, future research studies, registries and clinical trials. Unifying common language usage in Fontan is a critical precursor step for data aggregation, comparison of research findings and clinical outcomes and ultimately accelerating improvements in management for this growing group of patients.

## References

- Fontan F, Baudet E. Surgical repair of tricuspid atresia. *Thorax* 1971; **26**: 240–248.
- d’Udekem Y, Iyengar AJ, Cochrane AD, Grigg LE, Ramsay JM, Wheaton GR, Penny DJ, Brizard CP. The Fontan procedure: contemporary techniques have improved long-term outcomes. *Circulation* 2007; **116**: 1157–1164.
- Alsaied T, Bokma JP, Engel ME, Kuijpers JM, Hanke SP, Zuhlke L, Zhang B, Veldtman GR. Factors associated with long-term mortality after Fontan procedures: a systematic review. *Heart* 2017; **103**: 104–110.
- Daniels CJ, Bradley EA, Landzberg MJ, Aboulhosn J, Beekman RH 3rd, Book W, Gurvitz M, John A, John B, Marelli A, Marino BS, Minich LL, Poterucha JJ, Rand EB, Veldtman GR. Fontan-associated liver disease: Proceedings from the American College of Cardiology stakeholders meeting, October 1 to 2, 2015, Washington DC. *J Am Coll Cardiol* 2017; **70**: 3173–3194.
- Elder RW, McCabe NM, Hebson C, Veledar E, Romero R, Ford RM, Mahle WT, Kogon BE, Sahu A, Jokhadar M, McConnell ME, Book WM. Features of portal hypertension are associated with major adverse events in Fontan patients: the VAST study. *Int J Cardiol* 2013; **168**: 3764–3769.
- Stout KK, Daniels CJ, Aboulhosn JA, Bozkurt B, Broberg CS, Colman JM, Crumb SR, Dearani JA, Fuller S, Gurvitz M, Khairy P, Landzberg MJ, Saidi A, Valente AM, Van Hare GF. 2018 AHA/ACC guideline for the management of adults with congenital heart disease: executive summary: a report of the American College of Cardiology/American Heart Association task force on clinical practice guidelines. *J Am Coll Cardiol* 2019; **73**: 1494–1563.
- Stout KK, Daniels CJ, Aboulhosn JA, Bozkurt B, Broberg CS, Colman JM, Crumb SR, Dearani JA, Fuller S, Gurvitz M, Khairy P, Landzberg MJ, Saidi A, Valente AM, Van Hare GF. 2018 AHA/ACC guideline for the management of adults with congenital heart disease: a report of the American College of Cardiology/American Heart Association task force on clinical practice guidelines. *J Am Coll Cardiol* 2019; **73**: e81–e192.
- Udink Ten Cate FE, Hannes T, Germund I, Khalil M, Huntgeburth M, Apitz C, Brockmeier K, Sreeram N. Towards a proposal for a universal diagnostic definition of protein-losing enteropathy in Fontan patients: a systematic review. *Heart* 2016; **102**: 1115–1119.
- Gurvitz M, Marelli A, Mangione-Smith R, Jenkins K. Building quality indicators to improve care for adults with congenital heart disease. *J Am Coll Cardiol* 2013; **62**: 2244–2253.
- Fries JF. Methodology of validation of criteria for SLE. *Scand J Rheumatol Suppl* 1987; **65**: 25–30.
- Deal BJ, Jacobs ML. Management of the failing Fontan circulation. *Heart* 2012; **98**: 1098–1104.

## Acknowledgements

This work was funded by the Evan’s Heart Fund.

## Conflict of interest

None declared.

## Funding

No authors report any funding related to this topic.

Tweet: #Fontan terminology is confusing and imprecisely defined. This consensus statement defines key morbidities to standardize the use of language in clinical care, research and registries. Twitter: @AlsaiedTarek @rahulrathodmd @sasha\_opo @wernerbudts.

## Supporting information

Additional supporting information may be found online in the Supporting Information section at the end of the article.

Supporting Information

**Table S1.** Oral medication at hospital discharge in patients without in-hospital.

12. Goldberg DJ, Shaddy RE, Ravishankar C, Rychik J. The failing Fontan: etiology, diagnosis and management. *Expert Rev Cardiovasc Ther* 2011; **9**: 785–793.
13. Egbe AC, Connolly HM, Miranda WR, Ammash NM, Hagler DJ, Veldtman GR, Borlaug BA. Hemodynamics of Fontan failure: the role of pulmonary vascular disease. *Circ Heart Fail* 2017; **10**: e004515.
14. Book WM, Gerardin J, Saraf A, Valente AM, Rodriguez F 3rd. Clinical phenotypes of Fontan failure: implications for management. *Congenit Heart Dis* 2016; **11**: 296–308.
15. Hebson CL, McCabe NM, Elder RW, Mahle WT, McConnell M, Kogon BE, Veledar E, Jokhadar M, Vincent RN, Sahu A, Book WM. Hemodynamic phenotype of the failing Fontan in an adult population. *Am J Cardiol* 2013; **112**: 1943–1947.
16. Almond CS, Mayer JE Jr, Thiagarajan RR, Blume ED, del Nido PJ, McElhinney DB. Outcome after Fontan failure and takedown to an intermediate palliative circulation. *Ann Thorac Surg* 2007; **84**: 880–887.
17. De Rita F, Crossland D, Griselli M, Hasan A. Management of the failing Fontan. *Semin Thorac Cardiovasc Surg Pediatr Card Surg Annu* 2015; **18**: 2–6.
18. Hebson C, Book W, Elder RW, Ford R, Jokhadar M, Kanter K, Kogon B, Kovacs AH, Levit RD, Lloyd M, Maher K, Reshamwala P, Rodriguez F, Romero R, Tejada T, Marie Valente A, Veldtman G, McConnell M. Frontiers in Fontan failure: a summary of conference proceedings. *Congenit Heart Dis* 2017; **12**: 6–16.
19. Alsaied T, Bokma J, Engel M, Kuijpers J, Hanke S, Zuhlke L, Zhang B, Veldtman G. Predicting long-term mortality after Fontan procedures: a risk score based on 6707 patients from 28 studies. Submitted 2016.
20. Trezzi M, Cetrano E, Giannico S, Iorio FS, Albanese SB, Carotti A. Long-term outcomes after extracardiac Fontan takedown to an intermediate palliative circulation. *Ann Thorac Surg* 2018; **105**: 599–605.
21. Casella SL, Kaza A, Del Nido P, Lock JE, Marshall AC. Targeted increase in pulmonary blood flow in a bidirectional Glenn circulation. *Semin Thorac Cardiovasc Surg* 2018; **30**: 182–188.
22. Eicken A, Fratz S, Gutfried C, Balling G, Schwaiger M, Lange R, Busch R, Hess J, Stern H. Hearts late after Fontan operation have normal mass, normal volume, and reduced systolic function: a magnetic resonance imaging study. *J Am Coll Cardiol* 2003; **42**: 1061–1065.
23. Rathod RH, Prakash A, Kim YY, Germanakis IE, Powell AJ, Gauvreau K, Geva T. Cardiac magnetic resonance parameters predict transplantation-free survival in patients with Fontan circulation. *Circ Cardiovasc Imaging* 2014; **7**: 502–509.
24. Ghelani SJ, Harrild DM, Gauvreau K, Geva T, Rathod RH. Comparison between echocardiography and cardiac magnetic resonance imaging in predicting transplant-free survival after the Fontan operation. *Am J Cardiol* 2015; **116**: 1132–1138.
25. Bossers SS, Kapusta L, Kuipers IM, van Iperen G, Moelker A, Kroft LJ, Romeih S, de Rijke Y, Ten Harkel AD, Helbing WA. Ventricular function and cardiac reserve in contemporary Fontan patients. *Int J Cardiol* 2015; **196**: 73–80.
26. Saiki H, Eidem BW, Ohtani T, Grogan MA, Redfield MM. Ventricular-arterial function and coupling in the adult Fontan circulation. *J Am Heart Assoc* 2016; **5**: e003887.
27. Nakamura Y, Yagihara T, Kagisaki K, Hagino I, Kobayashi J. Ventricular performance in long-term survivors after Fontan operation. *Ann Thorac Surg* 2011; **91**: 172–180.
28. Cheung YF, Penny DJ, Redington AN. Serial assessment of left ventricular diastolic function after Fontan procedure. *Heart* 2000; **83**: 420–424.
29. Hagler DJ, Seward JB, Tajik AJ, Ritter DG. Functional assessment of the Fontan operation: combined M-mode, two-dimensional and Doppler echocardiographic studies. *J Am Coll Cardiol* 1984; **4**: 756–764.
30. Gaynor JW, Bridges ND, Cohen MI, Mahle WT, Decamply WM, Steven JM, Nicolson SC, Spray TL. Predictors of outcome after the Fontan operation: is hypoplastic left heart syndrome still a risk factor? *J Thorac Cardiovasc Surg* 2002; **123**: 237–245.
31. Gewillig M, Brown SC. The Fontan circulation after 45 years: update in physiology. *Heart* 2016; **102**: 1081–1086.
32. Gewillig M, Goldberg DJ. Failure of the fontan circulation. *Heart Fail Clin* 2014; **10**: 105–116.
33. Gewillig M, Daenen W, Aubert A, Van der Hauwaert L. Abolishment of chronic volume overload. Implications for diastolic function of the systemic ventricle immediately after Fontan repair. *Circulation* 1992; **86**: II93–II99.
34. Liu X, Yagi H, Saeed S, Bais AS, Gabriel GC, Chen Z, Peterson KA, Li Y, Schwartz MC, Reynolds WT, Saydmohammed M, Gibbs B, Wu Y, Devine W, Chatterjee B, Klena NT, Kostka D, de Mesy Bentley KL, Ganapathiraju MK, Dexheimer P, Leatherbury L, Khalifa O, Bhagat A, Zahid M, Pu W, Watkins S, Grossfeld P, Murray SA, Porter GA Jr, Tsang M, Martin LJ, Benson DW, Aronow BJ, Lo CW. The complex genetics of hypoplastic left heart syndrome. *Nat Genet* 2017; **49**: 1152–1159.
35. Margossian R, Sleeper LA, Pearson GD, Barker PC, Mertens L, Quartermain MD, Su JT, Shirali G, Chen S, Colan SD. Assessment of Diastolic Function in Single-Ventricle Patients After the Fontan Procedure. *J Am Soc Echocardiogr* 2016; **29**: 1066–1073.
36. Nagueh SF, Smiseth OA, Appleton CP, Byrd BF III, Dokainish H, Edvardsen T, Flachskampf FA, Gillebert TC, Klein AL, Lancellotti P, Marino P, Oh JK, Alexandru Popescu B, Waggoner AD, Houston T, Oslo N, Phoenix A, Nashville T, Hamilton OC, Uppsala S, Ghent LB, Cleveland O, Novara I, Rochester M, Bucharest R, St. Louis M. Recommendations for the Evaluation of Left Ventricular Diastolic Function by Echocardiography: An Update from the American Society of Echocardiography and the European Association of Cardiovascular Imaging. *Eur Heart J Cardiovasc Imaging* 2016; **17**: 1321–1360.
37. Michel M, Logoteta J, Entenmann A, Hansen JH, Voges I, Kramer HH, Petko C. Decline of Systolic and Diastolic 2D Strain Rate During Follow-Up of HLHS Patients After Fontan Palliation. *Pediatr Cardiol* 2016; **37**: 1250–1257.
38. Grattan M, Mertens L. Mechanics of the Functionally Univentricular Heart-How Little Do We Understand and Why Does It Matter? *Can J Cardiol* 2016; **32**: 1033 e11–8: 1033.e11–1033.e18.
39. Schwartz MC, Brock MA, Nykanen D, DeCamply W. Risk Factors for an Elevated Ventricular End-Diastolic Pressure Prior to the Fontan Operation. *Pediatr Cardiol* 2018; **39**: 315–323.
40. Averin K, Hirsch R, Seckeler MD, Whiteside W, Beekman RH III, Goldstein BH. Diagnosis of right diastolic dysfunction late after the Fontan procedure using a rapid volume expansion technique. *Heart* 2016; **102**: 1109–1114.
41. Cordina R, Ministeri M, Babu-Narayan SV, Ladouceur M, Celermajer DS, Gatzoulis MA, Uebing A, Li W. Evaluation of the relationship between ventricular end-diastolic pressure and echocardiographic measures of diastolic function in adults with a Fontan circulation. *Int J Cardiol* 2018; **259**: 71–75.
42. Udink ten Cate FEA, Trieschmann U, Germund I, Hannes T, Emmel M, Bennink G, Sreeram N. Stenting the Fontan pathway in paediatric patients with obstructed extracardiac conduits. *Heart* 2017; **103**: 1111–1116.
43. Alsaied T, Bokma JP, Engel ME, Kuijpers JM, Hanke SP, Zuhlke L, Zhang B, Veldtman GR. Predicting long-term mortality after Fontan procedures: A risk score based on 6707 patients from 28 studies. *Congenit Heart Dis* 2017; **12**: 393–398.
44. Bichell DP, Lamberti JJ, Pelletier GJ, Hoecker C, Cocalis MW, Ing FF, Jensen RA. Late left pulmonary artery stenosis after the Norwood procedure is prevented by a modification in shunt construction. *Ann Thorac Surg* 2005; **79**: 1656–1660 discussion 1660–1.
45. Konstantinov IE, Naimo PS, d'Udekem Y. Prevention of Right Pulmonary Artery Stenosis in Fontan Circulation: The Melbourne Modification of T-Fontan Operation. *Heart Lung Circ* 2016; **25**: 405–406.

46. Zachary CH, Jacobs ML, Apostolopoulou S, Fogel MA. One-lung Fontan operation: hemodynamics and surgical outcome. *Ann Thorac Surg* 1998; **65**: 171–175.
47. Dasi LP, Krishnankuttyrema R, Kitajima HD, Pekkan K, Sundareswaran KS, Fogel M, Sharma S, Whitehead K, Kanter K, Yoganathan AP. Fontan hemodynamics: importance of pulmonary artery diameter. *J Thorac Cardiovasc Surg* 2009; **137**: 560–564.
48. Tang E, Restrepo M, Haggerty CM, Mirabella L, Bethel J, Whitehead KK, Fogel MA, Yoganathan AP. Geometric characterization of patient-specific total cavopulmonary connections and its relationship to hemodynamics. *J Am Coll Cardiol Img* 2014; **7**: 215–224.
49. Mets JM, Bergersen L, Mayer JE Jr, Marshall AC, McElhinney DB. Outcomes of stent implantation for obstruction of intracardiac lateral tunnel Fontan pathways. *Circ Cardiovasc Interv* 2013; **6**: 92–100.
50. Ridderbos FJ, Wolff D, Timmer A, van Melle JP, Ebels T, Dickinson MG, Timens W, Berger RM. Adverse pulmonary vascular remodeling in the Fontan circulation. *J Heart Lung Transplant* 2015; **34**: 404–413.
51. Gewillig M, Brown SC, Heying R, Eyskens B, Ganame J, Boshoff DE, Budts W, Gorenflo M. Volume load paradox while preparing for the Fontan: not too much for the ventricle, not too little for the lungs. *Interact Cardiovasc Thorac Surg* 2010; **10**: 262–265.
52. Levy M, Danel C, Laval AM, Leca F, Vouhe PR, Israel-Biet D. Nitric oxide synthase expression by pulmonary arteries: a predictive marker of Fontan procedure outcome? *J Thorac Cardiovasc Surg* 2003; **125**: 1083–1090.
53. Yin Z, Wang Z, Zhu H, Zhang R, Wang H, Li X. Experimental study of effect of Fontan circuit on pulmonary microcirculation. *Asian Cardiovasc Thorac Ann* 2006; **14**: 183–188.
54. Egbe AC, Reddy YNV, Khan AR, Al-Otaibi M, Akintoye E, Obokata M, Borlaug BA. Venous congestion and pulmonary vascular function in Fontan circulation: Implications for prognosis and treatment. *Int J Cardiol* 2018; **271**: 312–316.
55. Miranda WR, Borlaug BA, Hagler DJ, Connolly HM, Egbe AC. Haemodynamic profiles in adult Fontan patients: associated haemodynamics and prognosis. *Eur J Heart Fail* 2019; **21**: 803–809.
56. Deal BJ, Mavroudis C, Backer CL. Arrhythmia management in the Fontan patient. *Pediatr Cardiol* 2007; **28**: 448–456.
57. Lasa JJ, Glatz AC, Daga A, Shah M. Prevalence of arrhythmias late after the Fontan operation. *Am J Cardiol* 2014; **113**: 1184–1188.
58. Weipert J, Noebauer C, Schreiber C, Kostolny M, Zrenner B, Wacker A, Hess J, Lange R. Occurrence and management of atrial arrhythmia after long-term Fontan circulation. *J Thorac Cardiovasc Surg* 2004; **127**: 457–464.
59. Stephenson EA, Lu M, Berul CI, Etheridge SP, Idriss SF, Margossian R, Reed JH, Prakash A, Sleeper LA, Vetter VL, Blaufox AD, Pediatric Heart Network Investigators. Blaufox AD and Pediatric Heart Network I. Arrhythmias in a contemporary fontan cohort: prevalence and clinical associations in a multicenter cross-sectional study. *J Am Coll Cardiol* 2010; **56**: 890–896.
60. Cecchin F, Johnsrude CL, Perry JC, Friedman RA. Effect of age and surgical technique on symptomatic arrhythmias after the Fontan procedure. *Am J Cardiol* 1995; **76**: 386–391.
61. Fishberger SB, Wernovsky G, Gentles TL, Gauvreau K, Burnetta J, Mayer JE Jr, Walsh EP. Factors that influence the development of atrial flutter after the Fontan operation. *J Thorac Cardiovasc Surg* 1997; **113**: 80–86.
62. Al-Ghamdi AK, Abdelmalek SM, Bamaga MS, Azhar EI, Wakid MH, Alsaied Z. Bacterial contamination of Saudi “one” Riyal paper notes. *Southeast Asian J Trop Med Public Health* 2011; **42**: 711–716.
63. Peters NS, Somerville J. Arrhythmias after the Fontan procedure. *Br Heart J* 1992; **68**: 199–204.
64. Carins TA, Shi WY, Iyengar AJ, Nisbet A, Forsdick V, Zannino D, Gentles T, Radford DJ, Justo R, Celermajer DS, Bullock A, Winlaw D, Wheaton G, Grigg L, d’Udekem Y. Long-term outcomes after first-onset arrhythmia in Fontan physiology. *J Thorac Cardiovasc Surg* 2016; **152**: 1355–1363.e1.
65. Warnes CA, Williams RG, Bashore TM, Child JS, Connolly HM, Dearani JA, del Nido P, Fasules JW, Graham TP Jr, Hijazi ZM, Hunt SA, King ME, Landzberg MJ, Miner PD, Radford MJ, Walsh EP, Webb GD. ACC/AHA 2008 guidelines for the management of adults with congenital heart disease: a report of the American College of Cardiology/American Heart Association Task Force on Practice Guidelines (Writing Committee to Develop Guidelines on the Management of Adults With Congenital Heart Disease). Developed in Collaboration With the American Society of Echocardiography, Heart Rhythm Society, International Society for Adult Congenital Heart Disease, Society for Cardiovascular Angiography and Interventions, and Society of Thoracic Surgeons. *J Am Coll Cardiol* 2008; **52**: e143–e263.
66. Pundi KN, Pundi KN, Johnson JN, Dearani JA, Li Z, Driscoll DJ, Wackel PL, McLeod CJ, Cetta F, Cannon BC. Sudden cardiac death and late arrhythmias after the Fontan operation. *Congenit Heart Dis* 2017; **12**: 17–23.
67. Pundi KN, Johnson JN, Dearani JA, Pundi KN, Li Z, Hinck CA, Dahl SH, Cannon BC, O’Leary PW, Driscoll DJ, Cetta F. 40-Year Follow-Up After the Fontan Operation: Long-Term Outcomes of 1,052 Patients. *J Am Coll Cardiol* 2015; **66**: 1700–1710.
68. Williams RV, Trivison T, Kaltman JR, Cecchin F, Colan SD, Idriss SF, Lu M, Margossian R, Reed JH, Silver ES, Stephenson EA, Vetter VL, Pediatric Heart Network Investigators. Comparison of Fontan Survivors with and without Pacemakers: A Report from the Pediatric Heart Network Fontan Cross-sectional Study. *Congenit Heart Dis* 2013; **8**: 32–39.
69. Gentles TL, Gauvreau K, Mayer JE Jr, Fishberger SB, Burnetta J, Colan SD, Newburger JW, Wernovsky G. Functional outcome after the Fontan operation: factors influencing late morbidity. *J Thorac Cardiovasc Surg* 1997; **114**: 392–403 discussion 404–5.
70. Rychik J. The Relentless Effects of the Fontan Paradox. *Semin Thorac Cardiovasc Surg Pediatr Card Surg Annu* 2016; **19**: 37–43.
71. Kreutzer C, Kreutzer G. The Lymphatic System: The Achilles Heel of the Fontan-Kreutzer Circulation. *World J Pediatr Congenit Heart Surg* 2017; **8**: 613–623.
72. Mohanakumar S, Telinius N, Kelly B, Lauridsen H, Boedtkjer D, Pedersen M, de Leval M, Hjortdal V. Morphology and Function of the Lymphatic Vasculature in Patients With a Fontan Circulation. *Circ Cardiovasc Imaging* 2019; **12**: e008074.
73. Menon S, Chennapragada M, Ugaki S, Sholler GF, Ayer J, Winlaw DS. The Lymphatic Circulation in Adaptations to the Fontan Circulation. *Pediatr Cardiol* 2017; **38**: 886–892.
74. Rychik J. Protein-losing enteropathy after Fontan operation. *Congenit Heart Dis* 2007; **2**: 288–300.
75. Rychik J, Goldberg D, Rand E, Semeao E, Russo P, Dori Y, Dodds K. End-organ consequences of the Fontan operation: liver fibrosis, protein-losing enteropathy and plastic bronchitis. *Cardiol Young* 2013; **23**: 831–840.
76. Dori Y, Itkin M. Etiology and new treatment options for patients with plastic bronchitis. *J Thorac Cardiovasc Surg* 2016; **152**: e49–e50.
77. Chavhan GB, Amaral JG, Temple M, Itkin M. MR Lymphangiography in Children: Technique and Potential Applications. *Radiographics* 2017; **37**: 1775–1790.
78. Geanacopoulos AT, Savla JJ, Pogoriler J, Piccione J, Phinizo P, DeWitt AG, Blinder JJ, Pinto E, Itkin M, Dori Y, Goldfarb SB. Bronchoscopic and histologic findings during lymphatic intervention for plastic bronchitis. *Pediatr Pulmonol* 2018; **53**: 1574–1581.
79. Dori Y, Keller MS, Rome JJ, Gillespie MJ, Glatz AC, Dodds K, Goldberg DJ, Goldfarb S, Rychik J, Itkin M. Percutaneous Lymphatic Embolization of Abnormal Pulmonary Lymphatic Flow as Treatment of Plastic Bronchitis in Patients With Congenital Heart

- Disease. *Circulation* 2016; **133**: 1160–1170.
80. James H, Witte MH, Bernas M, Barber B. Proposal for Prevention or Alleviation of Protein/Lymph-Losing Enteropathy (PLE/LLE) After Fontan Circulation Treatment of Univentricular Hearts: Restoration of Lymph Balance With a "Lymphatic Right-to-Left Shunt". *Lymphology* 2016; **49**: 114–127.
81. Antonio M, Gordo A, Pereira C, Pinto F, Fragata I, Fragata J. Thoracic Duct Decompression for Protein-Losing Enteropathy in Failing Fontan Circulation. *Ann Thorac Surg* 2016; **101**: 2370–2373.
82. Hraska V. Decompression of thoracic duct: new approach for the treatment of failing Fontan. *Ann Thorac Surg* 2013; **96**: 709–711.
83. Singhi AK, Vinoth B, Kuruvilla S, Sivakumar K. Plastic bronchitis. *Ann Pediatr Cardiol* 2015; **8**: 246–248.
84. Grutter G, Di Carlo D, Gandolfo F, Adorisio R, Alfieri S, Michielon G, Carotti A, Pongiglione G. Plastic bronchitis after extracardiac Fontan operation. *Ann Thorac Surg* 2012; **94**: 860–864.
85. Larue M, Gossett JG, Stewart RD, Backer CL, Mavroudis C, Jacobs ML. Plastic bronchitis in patients with fontan physiology: review of the literature and preliminary experience with fontan conversion and cardiac transplantation. *World J Pediatr Congenit Heart Surg* 2012; **3**: 364–372.
86. Schumacher KR, Singh TP, Kuebler J, Aprile K, O'Brien M, Blume ED. Risk factors and outcome of Fontan-associated plastic bronchitis: a case-control study. *J Am Heart Assoc* 2014; **3**: e000865.
87. Mertens L, Hagler DJ, Sauer U, Somerville J, Gewillig M. Protein-losing enteropathy after the Fontan operation: an international multicenter study. PLE study group. *J Thorac Cardiovasc Surg* 1998; **115**: 1063–1073.
88. John AS, Johnson JA, Khan M, Driscoll DJ, Warnes CA, Cetta F. Clinical outcomes and improved survival in patients with protein-losing enteropathy after the Fontan operation. *J Am Coll Cardiol* 2014; **64**: 54–62.
89. Meadows J, Jenkins K. Protein-losing enteropathy: integrating a new disease paradigm into recommendations for prevention and treatment. *Cardiol Young* 2011; **21**: 363–377.
90. Itkin M, Piccoli DA, Nadolski G, Rychik J, DeWitt A, Pinto E, Rome J, Dori Y. Protein-Losing Enteropathy in Patients With Congenital Heart Disease. *J Am Coll Cardiol* 2017; **69**: 2929–2937.
91. Nir A, Driscoll DJ, Mottram CD, Offord KP, Puga FJ, Schaff HV, Danielson GK. Cardiorespiratory response to exercise after the Fontan operation: a serial study. *J Am Coll Cardiol* 1993; **22**: 216–220.
92. Paridon SM, Mitchell PD, Colan SD, Williams RV, Blaufox A, Li JS, Margossian R, Mital S, Russell J, Rhodes J, Pediatric Heart Network Investigators. A cross-sectional study of exercise performance during the first 2 decades of life after the Fontan operation. *J Am Coll Cardiol* 2008; **52**: 99–107.
93. Ohuchi H. Cardiopulmonary response to exercise in patients with the Fontan circulation. *Cardiol Young* 2005; **15**: 39–44.
94. Ohuchi H, Arakaki Y, Hiraumi Y, Tasato H, Kamiya T. Cardiorespiratory response during exercise in patients with cyanotic congenital heart disease with and without a Fontan operation and in patients with congestive heart failure. *Int J Cardiol* 1998; **66**: 241–251.