

ARTICLE

Cellular immune responses in the pathophysiology of preeclampsia

Derek Miller^{1,2} | Kenichiro Motomura^{1,2} | Jose Galaz^{1,2} | Meyer Gershater^{1,2} |
Eun D. Lee^{3,4} | Roberto Romero^{1,5,6,7,8,9} | Nardhy Gomez-Lopez^{1,2,10}

¹ Perinatology Research Branch, Division of Obstetrics and Maternal-Fetal Medicine, Division of Intramural Research, Eunice Kennedy Shriver National Institute of Child Health and Human Development, National Institutes of Health, U.S. Department of Health and Human Services (NICHD/NIH/DHHS), Bethesda, Maryland, Detroit, Michigan, USA

² Department of Obstetrics and Gynecology, Wayne State University School of Medicine, Detroit, Michigan, USA

³ Department of Microbiology and Immunology, Virginia Commonwealth University, Richmond, Virginia, USA

⁴ Department of Obstetrics and Gynecology, Virginia Commonwealth University, Richmond, Virginia, USA

⁵ Department of Obstetrics and Gynecology, University of Michigan, Ann Arbor, Michigan, USA

⁶ Department of Epidemiology and Biostatistics, Michigan State University, East Lansing, Michigan, USA

⁷ Center for Molecular Medicine and Genetics, Wayne State University, Detroit, Michigan, USA

⁸ Detroit Medical Center, Detroit, Michigan, USA

⁹ Department of Obstetrics and Gynecology, Florida International University, Miami, Florida, USA

¹⁰ Department of Biochemistry, Microbiology, and Immunology, Wayne State University School of Medicine, Detroit, Michigan, USA

Correspondence

Nardhy Gomez-Lopez, MSc, PhD, Department of Obstetrics and Gynecology, Wayne State University School of Medicine, Perinatology Research Branch, NICHD/NIH/DHHS, 275 E. Hancock, Detroit, Michigan 48201, USA. Email: nardhy.gomez-lopez@wayne.edu, ngomezlo@med.wayne.edu

Abstract

Preeclampsia, defined as new-onset hypertension accompanied by proteinuria occurring at 20 weeks of gestation or later, is a leading cause of perinatal morbidity and mortality worldwide. The pathophysiology of this major multi-systemic syndrome includes defective deep placentation, oxidative stress, endothelial dysfunction, the presence of an anti-angiogenic state, and intravascular inflammation, among others. In this review, we provide a comprehensive overview of the cellular immune responses involved in the pathogenesis of preeclampsia. Specifically, we summarize the role of innate and adaptive immune cells in the maternal circulation, reproductive tissues, and at the maternal-fetal interface of women affected by this pregnancy complication. The major cellular subsets involved in the pathogenesis of preeclampsia are regulatory T cells, effector T cells, NK cells, monocytes, macrophages, and neutrophils. We also summarize the literature on those immune cells that have been less characterized in this clinical condition, such as $\gamma\delta$ T cells, invariant natural killer T cells, dendritic cells, mast cells, and B cells. Moreover, we discuss *in vivo* studies utilizing a variety of animal models of preeclampsia to further support the role of immune cells in this disease. Finally, we highlight the existing gaps in knowledge of the immunobiology of preeclampsia that require further

Abbreviations: APC, antigen presenting cell; cDC, conventional DC; CM, central memory; CTB, cytotrophoblast; DC, dendritic cell; EM, effector memory; EVT, extravillous trophoblast; HELLP, hemolysis, elevated liver enzymes, and low platelet count syndrome; IL, interleukin; iNKT, invariant Natural Killer T cell; iTreg, induced Treg; IUGR, intrauterine growth restriction; KIR, killer cell immunoglobulin-like receptor; KLR, killer cell lectin-like receptor; LPS, lipopolysaccharide; LTi cell, lymphoid tissue inducer cell; mDC, myeloid DC; MDSC, myeloid-derived suppressor cell; NET, neutrophil extracellular trap; NK cell, natural killer cell; NKT, natural killer T cell; nTreg, natural Treg; PBMCs, peripheral blood mononuclear cells; pDC, plasmacytoid DC; ROS, reactive oxygen species; RTE, recent thymic immigrant; RUPP, reduced uteroplacental perfusion; STBM, syncytiotrophoblast-derived microparticles; TCR, T-cell receptor; TLR, Toll-like receptor; Treg, regulatory T cell

investigation. The goal of this review is to promote translational research leading to clinically relevant strategies that can improve adverse perinatal outcomes resulting from the obstetrical syndrome of preeclampsia.

KEYWORDS

gestational hypertension, hypertensive disorders of pregnancy (HDP), immune cell, macrophage, monocyte, natural killer cell, neutrophil, NK cell, pregnancy, regulatory T cell, T cell

1 | INTRODUCTION

Preeclampsia is one of the most common pregnancy complications, occurring in 3–5% of all pregnancies,^{1–3} and is considered one of the “Great Obstetrical Syndromes.”^{4,5} Preeclampsia is diagnosed as new-onset hypertension ($\geq 140/90$ mmHg) accompanied by proteinuria occurring at 20 weeks of gestation or later.⁶ Preeclampsia can escalate to eclampsia, characterized by new-onset seizures.^{7,8} Yet, even if eclampsia does not occur, mothers with preeclampsia are at increased risk of stroke,^{9,10} acute cardiovascular complications,^{11,12} and hemolysis, elevated liver enzymes, and low platelet count (HELLP) syndrome,¹³ among others. Preeclampsia can also directly affect the fetus by causing fetal distress and fetal growth restriction as well as fetal death.^{14,15} Moreover, preeclampsia is associated with long-term adverse outcomes for the mother, such as the increased risk of cardiovascular disease,^{16,17} as well as for the offspring.¹⁸ Therefore, preeclampsia is one of the primary causes of maternal and neonatal morbidity and mortality worldwide.

Preeclampsia has been proposed to occur in two distinct stages.^{19–21} The first is represented by poor placentation and defective remodeling of the spiral arteries, resulting in insufficient placental circulation.^{19–22} The second stage results from inadequate blood flow and is characterized by a placental stress response.^{19–21} This chain of events culminates in a systemic maternal response that manifests as preeclampsia.^{19–21} Thus, the pathophysiology of preeclampsia is largely driven by the placenta, as evidenced by the fact that delivery of the placenta is the only effective treatment for this condition.² In addition, the systemic effects of preeclampsia are thought to result from the release of mediators by the placenta, which include soluble factors [e.g. soluble FMS-like tyrosine kinase 1 (sFlt-1) and endoglin],^{23–25} trophoblast-derived extracellular vesicles and/or microparticles,^{26,27} and reactive oxygen species (ROS).²⁸ Such mediators exert specific immune functions, contributing to the maternal systemic inflammatory state associated with preeclampsia.^{29,30} Indeed, a large body of research has demonstrated that preeclampsia is characterized by quantitative and qualitative modifications of both systemic and local immune cell responses. Therefore, understanding the complex cellular immune changes and interactions underlying the pathophysiology of preeclampsia may foster research focused on the development of immune therapeutic strategies to tackle this syndrome.

In this review, we provide a comprehensive overview of the cellular immunology of preeclampsia, given the large body of evidence implicating immune cells in the pathogenesis of this great obstetrical syndrome. Herein, we summarize prior reports of innate and adaptive immune cells in the circulation, reproductive tissues, and at the maternal-fetal interface of women with preeclampsia. The maternal-fetal interface includes multiple anatomically distinct sites of immunological interaction between the mother and fetus: the decidua basalis, where maternal cells interact with the fetal extravillous cytotrophoblast; the intervillous space, where circulating maternal immune cells are in contact with the fetal syncytiotrophoblast; and the interface between the decidua parietalis and amniochorion.^{31,32} We have focused our attention on the immune cell subsets that are thought to be most involved in the pathogenesis of preeclampsia such as regulatory T cells, effector T cells, and natural killer (NK) cells; furthermore, we also summarize literature on those subsets that have been less characterized in this clinical condition (Figure 1). Such research includes relevant studies demonstrating the putative functional contributions of different immune cell subsets to the pathogenesis of preeclampsia as well as their interactions with other physiological processes. Moreover, we lay out an overview of *in vivo* studies utilizing a variety of animal models of preeclampsia to offer further mechanistic evidence of immune cellular involvement in this pregnancy complication. Through this review, we provide insight into the immune cellular mechanisms of preeclampsia and potentially highlight gaps in knowledge that can drive future research.

1.1 | The role of adaptive immune cell subsets in preeclampsia

1.1.1 | Regulatory T cells

Regulatory T cells or “Tregs” are specialized CD4⁺ T cells with immunosuppressive activity that are best characterized by their expression of the forkhead/winged-helix transcription factor 3 (Foxp3), which is essential for their development and function.^{33,34} Under physiological conditions, Tregs carry out important functions as part of the mechanisms of peripheral tolerance through the suppression of aberrant T-cell activation.^{35,36} During pregnancy, unique and specific immune interactions take place between the mother and the

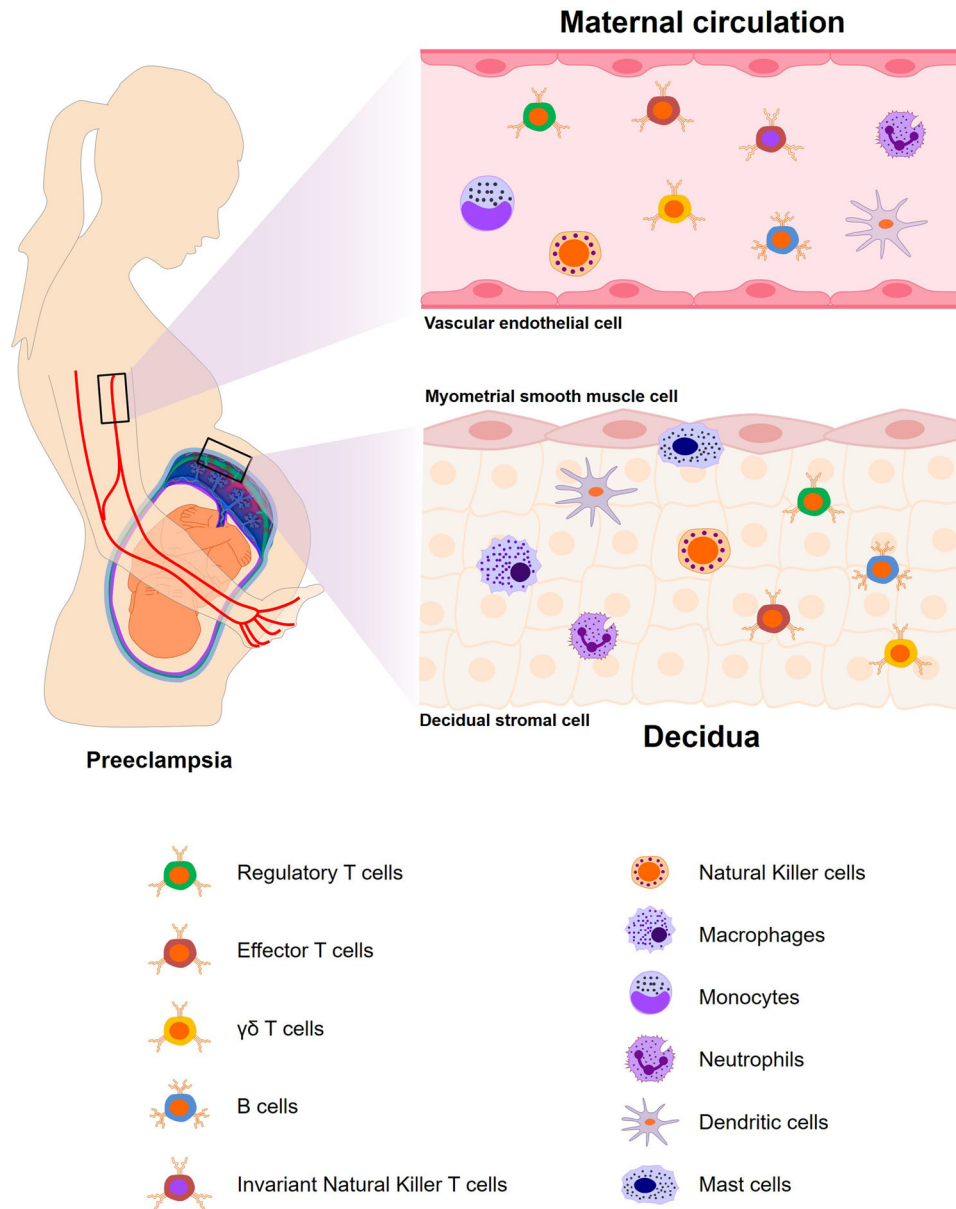


FIGURE 1 The role of innate and adaptive immune cells in the pathophysiology of preeclampsia. A large body of evidence has implicated adaptive immune cells in the maternal circulation (upper image), such as regulatory T cells, effector T cells, $\gamma\delta$ T cells, and B cells as well as innate immune cells, namely natural killer cells, invariant natural killer T cells, neutrophils, monocytes, and dendritic cells, in the cellular mechanisms that take place in women with preeclampsia. With regard to the decidua (lower image), studies have described alterations in natural killer cells, neutrophils, dendritic cells, mast cells, and tissue-resident macrophages as well as regulatory T cells, effector T cells, $\gamma\delta$ T cells, and B cells that occur in women with preeclampsia. Future studies may focus on crosstalk between local and systemic immune cells to provide a more interconnected picture of cellular immune responses that occur as part of the pathophysiology of preeclampsia

semi-allogeneic fetus, a concept that is referred to as “maternal-fetal tolerance.”³⁷⁻³⁹ At the molecular level, maternal-fetal tolerance arises from maternal immune recognition of fetal Ags, which activate a series of immunological mechanisms to regulate subsequent maternal Ag-specific responses. Tregs are a central component of such mechanisms of maternal-fetal tolerance,⁴⁰⁻⁴⁷ not only throughout pregnancy but also as part of successful implantation^{45,48,49} and even prior to fertilization.^{50,51}

Overall, current literature suggests that preeclampsia occurs in the context of a systemic and local reduction in Treg numbers and/or pro-

portions. Several studies have consistently demonstrated a reduced presence of Tregs in the placental bed⁵² and decidua^{53,54} of women with preeclampsia, although one report did not observe such a reduction.⁵⁵ In addition to cellular measurements, tissue-based gene expression analyses have also demonstrated a down-regulation of Treg-related transcription factors such as *FOXP3* and *GATA3* in the decidua or placenta of women with preeclampsia compared to those with normotensive term pregnancies.⁵⁶⁻⁵⁸ Thus, preeclampsia seems to be characterized by an overall reduction of Tregs in the decidua and placenta, and such deficiency is mirrored by a concomitant increase in

effector T cells,^{53,58} particularly T helper (Th)17 cells,⁵⁴ as well as the upregulation of Th1-associated molecules such as *TBET*.^{56,58} Notably, early-onset preeclampsia (preeclampsia diagnosed at < 34 weeks of gestation) seems to be characterized by a more severe decrease in the proportion of decidual Tregs compared to late-onset preeclampsia,⁵³ suggesting differences in the pathophysiology of these 2 disease subsets.

Several potential explanations for the local reduction of Tregs in women with preeclampsia have been proposed. First, there may be reduced differentiation of decidual Tregs due to defective signaling and/or Ag presentation by local antigen presenting cells (APCs).⁵⁹ This concept is supported by the demonstrations indicating that peripheral DCs from women with preeclampsia exhibit greater capacity for promoting Th1/Th17-like T-cell responses *in vitro* compared to those from healthy pregnant women.⁶⁰ Moreover, altered circulating DCs were associated with decreased proportions of peripheral Tregs in women with preeclampsia⁶¹ and with elevated proportions of Th17 cells in women with early-onset preeclampsia.⁶² Second, the impaired formation of decidual lymphatic vessels described in preeclampsia may prevent the migration of immune cells into this compartment.⁶³ Indeed, decidual lymphatic vessel density was shown to correlate with decidual Treg numbers; thus, it is possible that in preeclampsia the routes by which circulating Tregs enter the decidua are impeded.⁶³ Lastly, recent investigation of the T-cell receptor (TCR) repertoires of Tregs in the decidua revealed that the fraction of clonally-expanded Tregs was significantly decreased in women with preeclampsia,⁶⁴ possibly indicating a larger issue of impaired mechanisms of maternal-fetal tolerance.

Consistent with the observed local deficiency of Tregs, decreased numbers of circulating Tregs^{52,61,65–79} and CD8+CD25+Foxp3+ cells⁸⁰ have been reported in women with preeclampsia, although several studies did not observe differences,^{55,81,82} and such cells may also display lower suppressive capacity.^{55,66,70,73,78} The changes in circulating Tregs are reflected by elevated proportions of conventional T cells, particularly Th17 cells,^{73,75,77,79} as well as by the reduced *FOXP3* expression and IL-35 levels accompanied by elevated *RORC* expression and IL-17A levels in women with preeclampsia.⁸³ In particular, women with early-onset preeclampsia show increased disparity between CD4⁺ T cells expressing *RORC* and those expressing *FOXP3* compared to those with late-onset disease or healthy pregnancies.⁸⁴ The enhanced Th17-like responses observed in women with preeclampsia may not be solely driven by Th17 cells in all cases, yet they could also involve type 3 innate lymphoid cells (ILC3s) that have similar cytokine profiles and functions.⁸⁵ Regardless of origin, the administration of soluble IL-17 receptor C (IL-17RC) in a rat reduced uteroplacental perfusion (RUPP) model of preeclampsia was shown to at least partially mitigate the effects of an aberrant Th17 response.⁸⁶ Thus, the combination of reduced Tregs and inefficient suppression may result in a systemic environment that encourages aberrant Th17-dominant inflammation in women with preeclampsia.

One question that has arisen from the study of Tregs concerns the contributions of thymic/natural Tregs and peripheral/induced Tregs to pregnancy success, a topic that was recently reviewed.⁸⁷ Deficiency of conserved noncoding sequence 1 (CNS1), a *Foxp3* element with a

prominent role in peripheral Treg generation, increased immune cell infiltration of the placenta and caused fetal loss,⁴⁶ suggesting an important role for peripheral Tregs in pregnancy maintenance. More recent studies have indicated that the generation of thymic Tregs continues during pregnancy,^{88,89} although this concept is still controversial.⁹⁰ Notably, in women with preeclampsia, the proportions of circulating recent thymic immigrant (RTE) and mature naïve Tregs were decreased while that of memory Tregs was elevated, suggesting that the differentiation process of circulating Tregs may be impaired.^{90,91} Further supporting these observations, the proportions of CD25^{hi} Tregs were increased in women with preeclampsia while Foxp3^{hi} Tregs decreased, and it was suggested that the Foxp3^{hi} subset represents natural or thymic Tregs whereas the CD25^{hi} subset may be induced from peripheral naïve T cells.⁶⁶ Moreover, another report showed that the proportions of naïve Tregs were decreased while those of CD45RA-HLA-DR^{hi} and CD45RA-HLA-DR^{lo} Tregs increased in preeclampsia,⁷⁰ providing evidence that naïve Tregs may undergo an accelerated maturation or differentiation toward a highly suppressive phenotype^{92,93} in women with this condition. Finally, reports have indicated a general reduction of Tregs⁷² or the loss of specific subsets⁹⁴ in the circulation of women with preeclampsia. Taken together, these studies point to the altered differentiation of circulating Tregs as a hallmark of the pathophysiology of preeclampsia. This concept has recently been strengthened by high-dimensional longitudinal studies investigating the dynamics of peripheral Tregs in women with preeclampsia.⁹⁵ Notably, signatures corresponding to Tregs and effector T cells stood out as being differentially modulated in women with preeclampsia.⁹⁵ Specifically, STAT5 signaling in Th1 cells was consistently decreased in women who ultimately developed preeclampsia,⁹⁵ which is notable since the IL-2/STAT5 pathway has been implicated in T helper⁹⁶ and Treg⁹⁷ differentiation, and it may also inhibit Th17 differentiation.⁹⁸ In addition, p38 signaling (required for the suppressive function of Tregs⁹⁹) was increased in Tregs from women with a normal pregnancy but not from those with preeclampsia.⁹⁵ These observations provide a more translational perspective on Treg dysfunction and Treg/Th17 imbalance in women with preeclampsia, and they demonstrate potential for the use of specific signatures in the maternal circulation to evaluate preeclampsia.

The immune checkpoint PD-1/PD-L1 pathway has also been implicated in the aberrant Treg responses observed in women with preeclampsia.⁵⁴ Peripheral Tregs from women with preeclampsia demonstrated higher expression of PD-1 together with reduced expression on Th17 cells compared to those from normal pregnancies.⁵⁴ *In vitro* experiments revealed that inhibition of the PD-1/PD-L1 pathway promoted the expression of *RORC* and *IL17A* by Tregs, and supplementation with PD-L1 Fc skewed naïve CD4+ T-cell differentiation towards a Treg phenotype.⁵⁴ Similar findings were obtained in a rat model of L-N^G-Nitroarginine methyl ester (L-NAME)-induced preeclampsia, for which the administration of PD-L1-Fc restored the imbalanced Treg/Th17 ratio and, more importantly, improved fetal outcome.⁷⁵ Thus, dysfunctional or inhibited PD-1/PD-L1 pathway signaling may contribute to the Treg/Th17 imbalance observed in women with preeclampsia. In addition to the PD-1/PD-L1 pathway, the altered expression of apoptotic molecules may predispose Tregs to premature deletion, thereby contributing in

part to their diminished numbers in women with preeclampsia.⁷¹ The proportion of Tregs expressing the anti-apoptotic molecule Bcl-2 was greatly reduced in women with preeclampsia compared to those with a normal pregnancy, while the intensity of pro-apoptotic Bax expression was highly increased on those Tregs displaying this molecule.⁷¹ These findings suggest that Tregs may be more susceptible to apoptotic cell death in the context of preeclampsia, which is in tandem with the reduced numbers of Tregs found in this clinical condition.

Several *in vivo* studies have explored methods of boosting maternal Treg populations and/or function as part of ongoing efforts to find safe and effective treatments for preeclampsia.^{100,101} Treatment with an anti-CD28 “superagonist” has been tested in rats by using both angiotensin-renin and RUPP models.^{100,101} In the former, anti-CD28 treatment resulted in an expansion of Tregs in the placenta, spleen, and periphery of affected rats and improved fetal outcome,¹⁰⁰ whereas in the latter model, increased proportions of circulating Tregs were observed together with elevated systemic concentrations of IL-10 and transforming growth factor β (TGF β) without significantly improving neonatal weight.¹⁰¹ Using the same RUPP rat model, the infusion of IL-10¹⁰² or the adoptive transfer of Tregs derived from healthy pregnant rats¹⁰³ both improved maternal symptoms, yet no benefits to impaired fetal growth were observed. Thus, while treatments that directly promote Treg expansion or function may have short-term benefits for women with preeclampsia, additional investigation to determine potential fetal/neonatal benefits is required.

Taken together, the evidence presented above demonstrates that a deficiency or imbalance of Tregs may contribute to the pathophysiology of preeclampsia. Tregs have been typically considered as most important in early pregnancy; indeed, the depletion of Tregs in early pregnancy causes preeclampsia and fetal loss. Yet, the studies summarized herein indicate that the adverse effects of impaired or defective Tregs can be detected throughout pregnancy. In line with this concept, we recently demonstrated that the loss of Tregs in late gestation causes preterm birth, together with fetal growth restriction and bradycardia, without altering umbilical or uterine arterial blood flow.¹⁰⁴ Moreover, the loss of Tregs causes dysregulation of multiple cellular and developmental processes in the placenta,¹⁰⁴ providing further evidence that Tregs play an important role in fetal development in late pregnancy. Yet, whether Tregs represent a viable target for treatment in the second or third trimester, after the diagnosis of preeclampsia, remains unclear. It is likely that such a treatment may be most effective earlier in gestation, yet, given the demonstrated importance of Tregs for continued fetal growth, targeting Tregs in late pregnancy may also provide some benefits. Regardless, further research is required to determine whether therapies that boost Tregs or enhance their functions could be attainable in women with preeclampsia.

1.1.2 | Effector T cells

Preeclampsia is characterized by a systemic and local imbalance between Tregs and effector T cells, resulting in a pro-inflammatory state that favors Th1/Th17 cell activity. Yet, the details of how effec-

tor T cells are dysregulated are less clear. Here, we focus on reports of the general CD4⁺ and CD8⁺ effector T-cell populations in women with preeclampsia as well as changes in Th1/Th2 balance, given that multiple Treg studies described above simultaneously reported on Th17 responses.

Studies have indicated that the systemic effector T-cell pool is enhanced in women with preeclampsia, either in terms of increased numbers/proportions or a higher degree of activation.^{105–109} The proportions of circulating CD4⁺ T cells were increased in women with preeclampsia compared to those with a healthy pregnancy,¹⁰⁵ which is consistent with the observation that the proportion of Th1 cells (and subsequently the Th1/Th2 ratio) is also higher in this disease.¹⁰⁶ This increase in CD4⁺ T cells may be driven by the expansion of memory T cells, as the proportion of this subset was higher (and that of naïve T cells reduced) in women with preeclampsia compared to those with a normal pregnancy.¹⁰⁷ In addition to the literature on CD4⁺ T cells, other studies have also indicated dysregulation of CD8⁺ T cells in women with preeclampsia compared to those with a normal pregnancy.¹⁰⁸ Moreover, CD8⁺ T cells demonstrated enhanced cytotoxic activity in women with preeclampsia compared to those from non-preeclamptic women,¹⁰⁹ potentially due to the loss of Treg-mediated suppression (as described above). Consistent with such enhanced cytotoxic activity, the fraction of circulating microparticles derived from cytotoxic T cells was significantly increased in women with preeclampsia compared to nonpregnant controls.¹¹⁰

Together with the reported increases in peripheral T-cell populations and cytotoxic function, lymphocytes from women with preeclampsia were shown to display higher intracellular free Ca²⁺,¹¹¹ and CD3⁺ T cells showed greater expression of pyruvate kinase,¹¹² suggesting enhanced activation of circulating T cells. The expression of the Th1- or Th17-associated transcription factors Tbet and ROR γ t was increased in peripheral blood mononuclear cells (PBMCs) from preeclamptic women compared to those with a normotensive pregnancy,¹¹³ and the *in vitro* knockdown of these factors caused a shift toward greater Foxp3 expression,¹¹³ further supporting a preeclampsia-associated imbalance in the differentiation of effector and regulatory T cells. Accordingly, phenotypic changes in effector T cells from women with preeclampsia included the increased expression of activation-associated markers such as HLA-DR on both CD4⁺ and CD8⁺ T-cell subsets^{114,115} together with greater *in vitro* secretion of relevant cytokines such as IL-2, TNF, and IFN- γ .¹¹⁵ Interestingly, the surface expression of CD40L by peripheral CD4⁺ T cells and serum concentrations of soluble CD40L were both elevated in women with preeclampsia,¹¹⁶ potentially promoting immune cell activation and increasing APC activity, and the administration of anti-CD40L Ab alleviated maternal preeclampsia symptoms in a rat model of adoptive transfer of CD4⁺ T cells.¹¹⁷ Together with human data, these *in vivo* studies provide further evidence that peripheral T cells may participate in the pathophysiology of preeclampsia; indeed, the adoptive transfer of Th1-differentiated splenocytes into pregnant mice has been used as an *in vivo* model of this syndrome due to the resulting preeclamptic features (e.g. elevated blood pressure and proteinuria).¹¹⁸ This model has since been replicated, as lymphocytes activated via culture with

anti-CD3 Ab and IL-2/IL-12 were shown to induce hypertensive symptoms in mice,¹¹⁹ and both IL-12-stimulated and IL-4-stimulated splenocytes were shown to cause fetal resorption and hypertension/proteinuria in mice.¹²⁰ These findings further indicate that skewed differentiation of peripheral T-cells toward pro-inflammatory subsets takes place in women with preeclampsia, and that the aberrant activation of these cells can contribute to the disease pathophysiology.

Although the majority of investigations have pointed to increased T-cell activity in women with preeclampsia, several reports have indicated the opposite phenomenon. An early study indicated low peripheral T-cell/B-cell counts in women with preeclampsia together with reduced *in vitro* T-cell responses to stimulation compared to those with a normal pregnancy,¹²¹ and lymphocytic cytotoxic activity was also shown to decrease in preeclamptic women.¹²² More recently, it was reported that, while total CD4⁺ and CD8⁺ T-cell proportions did not differ between normal and preeclamptic pregnancies, proportions of CD4⁺ memory, CD4⁺ effector memory (EM), and CD4⁺ central memory (CM) subsets were all decreased in women with preeclampsia compared to those with a healthy pregnancy.¹²³ Such reports of decreased T-cell populations may reflect a diminished presence of specific subsets rather than a general reduction. Indeed, the proportion of peripheral CD4⁺HLA-G⁺ T cells was specifically decreased in pregnancies complicated by preeclampsia,¹²⁴ as were the maternal plasma concentrations of soluble HLA-G.¹²⁵ This observation is notable since HLA-G, which is primarily expressed by fetal tissues¹²⁶ and promotes immune tolerance,^{127,128} can also be expressed by a subset of immunosuppressive T cells.^{129,130} Thus, in the context of preeclampsia, a reduction of specific subsets of peripheral T cells may occur that is distinct from the enhanced presence of inflammatory T cells reported by other studies.

It should be pointed out that several studies have not reported significant alterations in circulating T-cell proportions, phenotype, or function in women with preeclampsia.^{131–133} These studies highlight the fact that, unlike Tregs, changes in the composition, proportion, or activity of peripheral T cells may not be a ubiquitous phenomenon in women with preeclampsia, nor may the degree of such changes be consistent among patients. Similarly, a lack of detectable differences in the expression of lymphocyte markers between normal and preeclamptic pregnant rats¹³⁴ could be due to the specific markers investigated or, potentially, the model utilized [lipopolysaccharide (LPS) infusion]. Thus, homogenization of patient groups or animal models, including in-depth characterization and categorization of patient/animal parameters, is essential for the determination of the specific immune changes taking place in preeclampsia.

Investigations of effector T cells in the decidua and placenta largely provided inconsistent results, likely due to variation in patient groups, experimental methods, and the specific phenotypes or functions investigated. Flow cytometric¹³⁵ and immunohistochemical¹³⁶ studies of the decidua demonstrated reduced proportions of T cells in women with preeclampsia compared to those who underwent preterm birth or delivery at term, respectively. However, a later immunohistochemistry study showed increased infiltration of CD8⁺ T cells in decidua tissues from preeclamptic women compared to those without this disease.¹³⁷ Similarly, the proportion of CD8⁺CD28⁺ T cells was ele-

vated in the decidua tissues from preeclamptic women, despite an observed overall reduction in total T-cell proportions.¹³⁸ Yet, another study reported increased numbers of both CD8⁺ T cells and total T cells in placental bed biopsies from women with preeclampsia compared to those with a normotensive term pregnancy,¹³⁹ and the volume fraction of CD8⁺ T cells was increased in placentas from pregnancies complicated by preeclampsia or fetal growth restriction.¹⁴⁰ Similar to changes observed in the periphery, preeclampsia-specific alterations in local effector T cells may be driven by individual subsets: flow cytometry studies of early-onset and late-onset preeclampsia showed a reduction in the proportions of CD4⁺ CM T cells and CD8⁺CD45RO⁺ T cells in both study groups, but increased proportions of activated CD4⁺ and CD8⁺ memory cells in women with early-onset preeclampsia compared to those with a normal term pregnancy.¹⁴¹ Thus, not only do preeclampsia-associated alterations in the local T-cell repertoire seem to be based on individual subsets, but it seems that early-onset preeclampsia is characterized by more significant (and potentially more severe) immunological changes.

The increased presence of effector T cells in the decidua of women with preeclampsia may also occur as a secondary response to other local events. A subset of clonally expanded CD8⁺ EM T cells expressing reduced PD-1 was demonstrated to be present in the decidua tissues of women with preeclampsia compared to those from women with a healthy term pregnancy,¹⁴² which is consistent with a previous report demonstrating that fetal Ag-specific CD8⁺ T cells persist throughout multiple pregnancies and typically display an exhausted-like PD-1⁺ phenotype.¹⁴³ Thus, in some cases of preeclampsia, the local expansion of effector T cells may occur as a result of impaired suppressive activity. Alternatively, the development of placental histological lesions, such as acute atherosclerosis, which is associated with preeclampsia, may also promote T-cell infiltration. Indeed, increased numbers of such cells were observed in the decidua tissues of women with preeclampsia and acute atherosclerosis compared to those from preeclamptic women without this lesion,¹⁴⁴ highlighting the importance of considering confounding variables such as placental lesions when evaluating the immune changes that take place in women with preeclampsia.

Collectively, the above-mentioned reports indicate that T-cell activation in both the maternal circulation and in the decidua or placenta is a characteristic of preeclampsia, likely driven by the prevalence of systemic inflammation together with the decreased presence and function of Tregs and immunosuppressive HLA-G⁺ T cells (Figure 2). Importantly, women with early-onset preeclampsia seem to present more severe T-cell responses, and the presence of associated conditions, such as acute atherosclerosis, may also exacerbate T cell-driven pathology. Such variability highlights the complex and heterogeneous nature of the immunological responses that occur in preeclampsia, which should be taken into consideration when evaluating this disease and potential treatments.

1.1.3 | Gamma Delta ($\gamma\delta$) T cells

A small proportion of the T-cell population¹⁴⁵ is composed of T cells that express a TCR composed of a γ -chain and a δ -chain rather than

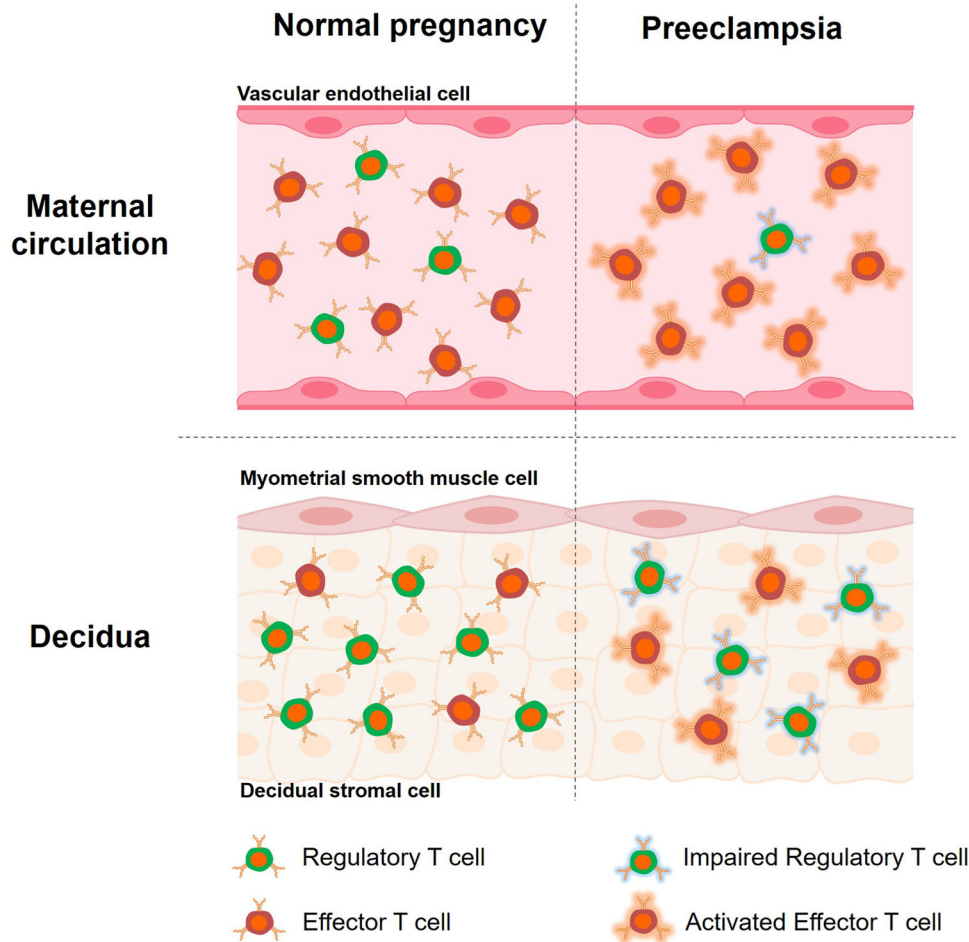


FIGURE 2 An imbalance between regulatory and effector T cells in the pathophysiology of preeclampsia. During normal pregnancy, regulatory T cells in the maternal circulation (upper panel) and the decidua (lower panel) mediate effector T-cell activity to prevent aberrant immune responses. Such balance is disrupted in women with preeclampsia, in whom systemic and local proportions of regulatory T cells are decreased and effector T cells exhibit greater activation and function

the conventional α/β TCRs found on most T cells.¹⁴⁶⁻¹⁴⁸ The investigation of such $\gamma\delta$ T cells in the context of preeclampsia has been limited, but deserves discussion. One study found that the proportions of circulating $V\gamma9V\delta2+$ $\gamma\delta$ T cells, which form the majority of $\gamma\delta$ T cells in humans,¹⁴⁹ did not differ between women with preeclampsia and those with a normal pregnancy.¹⁵⁰ However, such cells showed increased production of perforin and IFN- γ in women with preeclampsia, suggesting polarization toward a pro-inflammatory state, and they were less susceptible to apoptosis compared to those from women with a normal pregnancy.¹⁵⁰ By contrast, the expression of the $\gamma\delta$ TCR was increased in the placentas of women with preeclampsia compared to those from non-preeclamptic women, and *in vivo* studies using Toll-like receptor 3 (TLR3) or TLR7 activation-induced mouse models of preeclampsia suggested that splenic $\gamma\delta$ T cells are enriched in this clinical condition.¹⁵¹ The involvement of $\gamma\delta$ T cells in preeclampsia was further supported by the *in vivo* deletion of such cells, which reduced the maternal symptoms resulting from TLR activation.¹⁵¹ Interestingly, a longitudinal systems biology approach demonstrated that p38 signaling decreased in $\gamma\delta$ T cells from the first trimester to the second

trimester in women who eventually developed preeclampsia⁹⁵; however, mechanistic investigations are required to further establish the relevance of this finding.

Taken together, the above-mentioned studies provide a preview of $\gamma\delta$ T-cell responses in women with preeclampsia, suggesting that this minor yet unique T-cell subset undergoes altered activation and signaling in the context of this pregnancy disease. Future studies may provide further insights into the relative contribution of these cells to local and systemic inflammation in women with preeclampsia.

1.1.4 | B Cells

B cells, particularly B1 cells, are considered capable of participating in autoimmune disease through the production of autoantibodies¹⁵²; thus, given the relevance of autoantibody production in the pathophysiology of preeclampsia,¹⁵³ multiple studies have investigated B cells in the context of this obstetrical syndrome. One of the earliest of these studies found that the total proportions of peripheral B cells did not

differ between women with preeclampsia and those with a healthy pregnancy.¹⁵⁴ However, the authors surmised that, if immunological changes occurred in preeclampsia, such changes were likely subtler than the parameters determined in the current study. Accordingly, later immunophenotyping studies showed that the proportions of peripheral memory B cells and plasma cell precursors were both elevated in women with preeclampsia compared to healthy pregnant women.¹⁵⁵ *In vitro* mitogenic stimulation assays also demonstrated that the proportions of generated plasma cells and the numbers of Ig-producing cells were greater in samples from such preeclamptic women.¹⁵⁵ Subsequently, the frequencies of peripheral B1a cells¹⁵⁶ as well as memory B cells and non-class-switched memory B cells¹⁵⁷ were also shown to increase in women with preeclampsia compared to those with a normal pregnancy, and the general proliferative capacity of the latter cells was enhanced by *in vitro* LPS stimulation.¹⁵⁷ Thus, preeclampsia is associated with enhanced circulating B cells with potentially greater capacity for Ab production.

A hallmark of preeclampsia is the production of agonistic autoantibodies directed against the angiotensin II type 1 receptor.¹⁵³ The elevated proportions of systemic B1a cells found in preeclamptic women were shown to participate in the production of such autoantibodies.¹⁵⁶ Notably, B1a cells were also found exclusively in placental samples from preeclamptic patients but not in tissues from normal pregnancies.¹⁵⁶ In addition to autoantibody production, such B1a cells may be intrinsically dysfunctional in preeclampsia, as this B-cell subset in an abortion-prone mouse model failed to inhibit Th17 cell differentiation and induced Th1 polarization.¹⁵⁸ Moreover, in normal pregnant mice, the proportion of peritoneal CD86⁺ B1a cells was reduced compared to non-pregnant mice, but this population was maintained in the abortion-prone model.¹⁵⁸ The above-noted studies suggest that specific B-cell subsets are expanded in women with preeclampsia and can produce autoantibodies, potentially including those against the angiotensin II type 1 receptor, thereby promoting hypertension and inflammation. Further *in vivo* studies have strengthened this concept by showing that treatment with the anti-CD20 Ab Rituximab in a RUPP rat model reduced circulating angiotensin II type 1 receptor autoantibodies, subsequently ameliorating some maternal symptoms without improving fetal outcomes.¹⁵⁹ Consistently, other reports in animals confirmed that autoantibodies were produced by B cells as part of the hypertensive disorders caused by an environmental pollutant, cadmium.^{160,161} However, not all studies investigating the contribution of B cells to preeclampsia have been consistent, as peripheral, splenic, and placental B1 and B2 cells were largely unaltered in a RUPP rat model, and anti-CD20 B-cell depletion did not improve maternal symptoms.¹⁶² The above-noted studies, together with other reports using animal models of hypertensive disorders,^{163,164} indicate that the depletion of B cells can improve some maternal parameters but may not be sufficient to rescue pregnancy outcomes.

B-cell-associated dysfunction may also have a genetic basis in some women with preeclampsia, as the presence of a polymorphism in the Fc fragment of IgG receptor IIb (FcγRIIB) was significantly associated with preeclampsia occurrence.¹⁶⁵ This finding is of particular interest, given that FcγRIIB is the only known inhibitory Fc receptor; moreover, it is

the only FcγR found on B cells in mice.¹⁶⁶ FcγRIIB has thus been considered as an “Ab checkpoint,” mirroring, in some ways, the functions of multiple immune checkpoint markers found on T cells.¹⁶⁷ Therefore, it is plausible that the presence of polymorphisms that result in the reduced or impaired function of FcγRIIB may allow for uncontrolled B-cell responses such as the enhanced production of autoantibodies.

The above-mentioned studies demonstrate that B cells contribute to the pathophysiology of preeclampsia through the production of autoantibodies that can further exacerbate ongoing immune responses. Thus, the systemic immune response that characterizes preeclampsia is a multivariate condition involving the dysregulation of several distinct immune pathways. This response is further highlighted by the fact that the use of treatments that target B cells was only partially successful in animal models. Therefore, future efforts to prevent or treat preeclampsia will likely need to consider each individual immune pathway implicated in this clinical disease.

1.2 | The role of innate immune cell subsets in preeclampsia

1.2.1 | Natural Killer cells

During early pregnancy, NK cells represent a large population of leukocytes in the decidual tissues¹⁶⁸ and perform a critical role in the remodeling of the spiral arteries.^{169–171} Thus, it was presumed that NK cells may be implicated in diseases related to poor placentation, such as preeclampsia. However, there is some controversy surrounding the importance of NK cells in the pathogenesis of preeclampsia, given multiple studies that appear to provide conflicting data. One factor that may contribute to such seeming discrepancy could be considered: since NK cells provide their most important contributions during early pregnancy, deficiencies in these cells leading to preeclampsia may not be reflected in the NK-cell populations observed at delivery (when most studies of human preeclampsia are performed).

Several studies have reported increased NK-cell numbers or frequencies in the gestational and reproductive tissues of women with preeclampsia,^{172–174} while others report a diminished presence^{175,176} compared to those of normal pregnancies. Alterations in specific NK-cell phenotypes may contribute to such discrepancies; for example, the proportions of decidual CD56⁺NKp46⁺ cells were increased in women with preeclampsia, but subsets identified using other NK-cell markers, such as NKp44, NKp30, NKp80, or NKG2D, were not.¹⁷³ Differences between the disease mechanisms of early-onset and late-onset preeclampsia could also contribute to disparities between studies, given that the increase in both decidual and peripheral NK cell proportions was more significant in women with early-onset preeclampsia than in those with late-onset preeclampsia when compared to term pregnancies.¹⁷⁴ A potentially limiting factor when evaluating tissue-wide immune cell populations may be the use of microscopy-based techniques, as both immunohistochemistry¹⁷⁶ and immunofluorescence microscopy¹⁷⁵ of decidual tissues revealed lower numbers of NK cells in preeclamptic patients compared to healthy pregnancies.

Preeclampsia is also accompanied by alterations in local NK-cell function. Decidual NK cells displayed a distinct gene expression profile compared to peripheral NK cells, and it was found that a subset of these transcripts was downregulated in chorionic villi tissue from women who subsequently developed preeclampsia compared to those with normotensive pregnancy.¹⁷⁷ Interestingly, the proportions of decidual NK cells expressing IFN- γ , perforin, or granzyme B were shown to be elevated in early- and late-onset preeclampsia compared to those in healthy term pregnancies, with early-onset having the greatest increase.¹⁷⁴ By contrast, specific markers of decidual NK-cell activation (IFN- γ , IL-8, and CD107a) were shown to be decreased in women with preeclampsia compared to those with a healthy term pregnancy.¹⁷³ Thus, the activation and functional status of local NK cells in women with preeclampsia remain to be established. Nonetheless, it has been suggested that the reduced expression of Fas on decidual NK cells leads to reduced NK-cell apoptosis in women with preeclampsia,¹⁷⁸ thereby prolonging any potential state of dysfunction.

Aberrant NK-cell responses during pregnancy may have a genetic basis in some cases. Mothers with the KIR genotype *KIR AA* showed an increased propensity to undergo pregnancy disorders, such as preeclampsia, when the fetus presented more group 2 *HLA-C* genes than the mother.¹⁷⁹ By contrast, the presence of the telomeric (*Tel-B*) region in mothers with the *KIR B* haplotype was associated with a significant protective effect against pregnancy complications, particularly when paired with an *HLA-C2* fetus.¹⁷⁹ Notably, the *Tel-B* region includes *KIR2DS1*, which binds *HLA-C2*⁺ trophoblasts and is expressed by uterine NK cells.¹⁷⁹ However, the complexity of the interactions between maternal KIRs and fetal *HLA-C* was heightened by observations showing the combination of maternal *KIR B* and fetal *HLA-C2* to be a risk factor for acute atherosclerosis in women with preeclampsia.¹⁸⁰ A separate report showed that both uterine and peripheral NK cells expressed *KIR2DL1A* and *KIR2DL1B*, with a predominance of *KIR2DL1A* variants being associated with enhanced NK-cell function as well as an increased risk for preeclampsia.¹⁸¹ In line with these findings, the expression of the immune tolerance-promoting *HLA-G*^{127,128} and its receptors, such as *LILRB1*,¹⁸² was decreased in placentas from women with preeclampsia.¹⁸³ A link between fetal *HLA* genotype and maternal preeclampsia risk was further supported by the reported association between a poly-T stretch within the downstream region of the *HLA-G*01:01:01:01* allele and the occurrence of preeclampsia.¹⁸⁴ Based on these observations, the determination of local NK-cell status in early pregnancy (e.g. the evaluation of maternal KIRs and paternal/fetal *HLA* genotype) could potentially have predictive value for preeclampsia.

Human and animal studies have identified specific factors that may participate in altered NK-cell functions in women with preeclampsia. Placental expression of the adhesion molecule *NECTIN4* was shown to be elevated in women with preeclampsia compared to those with a normotensive pregnancy, and the overexpression of this molecule in a trophoblast cell line resulted in enhanced susceptibility to NK-cell-mediated cytotoxicity.¹⁸⁵ In mice, uterine NK cells were shown to express placental growth factor (PIGF), with immature NK cells having greatest expression,¹⁸⁶ and the deletion of PIGF resulted in the altered composition of local NK cells.¹⁸⁶ Given that PIGF has also been shown

to promote apoptosis and exhaustion of effector T cells,¹⁸⁷ altered levels of this factor may contribute to dysregulated T-cell responses in women with preeclampsia. Lastly, mice with homozygous or heterozygous deficiency of heme oxygenase 1 (*HMOX-1*) had fewer uterine NK cells and presented IUGR and gestational hypertension, which were ameliorated by the application of carbon monoxide (the primary metabolite of *HMOX-1*).¹⁸⁸

Several studies have provided a mechanistic link between NK cells and pathological changes during pregnancy by depleting such cells using the anti-asialo-GM1 Ab^{189–191} in different models of preeclampsia. In a rat renin-angiotensin model, deletion of NK cells resulted in the degeneration of vessels in the mesometrial triangle (the distinct lymphoid aggregate formed between the uterus and decidua in rodents and other species¹⁹² that is comparable to the human placental bed) together with a reduced presence of trophoblasts in the vessel lumen.¹⁹³ The vasculopathy resulting from NK-cell depletion manifested as lower fetal weight in normal wild-type rats and a reduced brain/liver weight ratio in preeclamptic rats.¹⁹³ However, in a RUPP rat model, the depletion of NK cells improved the mean arterial pressure of dams and fetal weight,¹⁹⁴ and a similar study also demonstrated improved maternal parameters upon depletion of NK cells.¹⁹⁵ These reports highlight key differences in the animal models utilized: in the renin-angiotensin model, maternal hypertension, tissue damage, and fetal growth impairment begin early in pregnancy,^{196–199} and NK cell depletion was performed on 5 and 10 days *post coitum* (dpc).¹⁹³ In the latter two studies, RUPP was surgically performed at 14 dpc with NK-cell depletion carried out over the following days.^{194,195} Given that NK cells have been suggested to be more involved in early-onset preeclampsia,¹⁷⁴ it is likely that interference with their function in early pregnancy may have more severe outcomes than in a model of late-onset preeclampsia.

Circulating NK cells are also affected in women with preeclampsia, although the extent and direction of such changes are still under debate. Specifically, the cytotoxicity of NK cells has been separately reported to increase,^{200–202} decrease,²⁰³ or remain consistent²⁰⁴ in women with preeclampsia compared to those with a healthy pregnancy. Women who later developed preeclampsia had increased numbers of circulating NK cells in the first trimester compared to women who had an uncomplicated pregnancy,²⁰⁵ while another report found that elevated proportions of NK cells were associated with postpartum preeclampsia, but not with preeclampsia during pregnancy.²⁰⁶ Yet, it has also been shown that the proportions of specific NK-cell subsets are increased in the third trimester in women with preeclampsia compared to normotensive pregnant women.²⁰⁷ Thus, there seems to be some overall consensus that the numbers or proportions of peripheral NK cells are enhanced in women who had or are at risk for preeclampsia. In line with this concept, several studies have indicated that the functionality of such cells is similarly enhanced. The expression of IFN- γ by peripheral NK cells tended to increase in women with preeclampsia,^{208,209} as did the expression of *NKG2A* and *NKG2C*,^{210,211} compared to those from women with a healthy pregnancy. The ratio of “type 1” to “type 2” NK cells also increased in the circulation of women with preeclampsia,¹³³ whereas the proportions of such cells expressing protective factors such as

vascular endothelial growth factor (VEGF)²¹² and galectin-1²¹³ were significantly decreased. Mucin-16 (CA-125), a glycoprotein that can be expressed by decidual cells,^{214,215} was more frequently bound to circulating NK cells in women with preeclampsia compared to those from term uncomplicated pregnancies.²¹⁶ Finally, the intracellular expression of multiple cytokines was enhanced in peripheral NK cells from women with severe early-onset preeclampsia compared to those from healthy pregnancies.²¹¹ Together, these studies support a dysregulated and potentially activated status for peripheral NK cells in preeclamptic women.

In search of potential treatments for preeclampsia, several studies investigating the beneficial effects of anti-inflammatory compounds have also reported alterations in local or systemic NK-cell populations as secondary outcomes. The administration of the anti-inflammatory cytokine IL-4 in a RUPP rat model reduced the proportions of total and cytolytic NK cells in the placenta,²¹⁷ as did treatment with 17 α -hydroxyprogesterone caproate (17-OHPC).²¹⁸ Targeting reactive oxygen species by treatment with a superoxide dismutase mimetic, tempol, also lowered the proportions of circulating total and cytotoxic NK cells.²¹⁹ Thus, one of the mechanisms by which anti-inflammatory treatments improved preeclampsia symptoms may be through the modulation of NK cells.

Collectively, the studies described above provide evidence of two distinct but connected phenomena: first, dysfunctional local NK-cell responses leading to poor placentation and/or lack of spiral artery remodeling may lay the groundwork for the eventual manifestation of preeclampsia later in pregnancy. Poor spiral artery remodeling alone may not lead to preeclampsia, and it may require the superimposition of other insults or mechanisms for disease escalation.²²⁰ This model is based on observations in *Rag2*^{-/-} γ *c*^{-/-} mice, in which the presence of thickened spiral artery walls and reduced lumen diameter was associated with the loss of NK cells^{221,222} and did not lead to maternal hypertension.²²³ Thus, while NK cells are important for proper remodeling of the spiral arteries in early pregnancy, disruption of this mechanism may not be the sole driver of preeclampsia. Yet, human studies demonstrated that a high uterine artery resistance index in the first trimester as determined by Doppler ultrasound was associated with reduced proportions of NK cells expressing specific KIRs and LILRB1, suggesting altered NK cell-trophoblast interactions in such cases.²²⁴ Second, the studies reviewed above suggest that the immunological manifestations of preeclampsia include elevated proportions and activity of peripheral NK cells as part of the overall inflammatory profile that characterizes this clinical condition. Therefore, changes in local or systemic NK-cell populations observed after the diagnosis of preeclampsia (in late pregnancy) are likely the result of upregulated inflammatory signaling, rather than the cause, and should therefore be considered as distinct phenomena.

1.2.2 | Invariant Natural Killer T cells

Natural Killer T (NKT) cells are a unique population of lymphocytes that express a TCR together with NK-cell markers.²²⁵ Among this popula-

tion, invariant NKT (iNKT) cells represent the largest and best-studied subset.²²⁶ Although several studies have proposed a role for iNKT cells in the pathophysiology of pregnancy complications, such as preterm birth,²²⁷⁻²³⁰ the contribution of these cells to preeclampsia is less well defined. The ratio of circulating type 1 to type 2 iNKT cells was shown to increase in women with preeclampsia compared to those with a normal pregnancy, suggesting a balance shift toward a pro-inflammatory phenotype.¹³³ Moreover, the expression of the early activation marker CD69 and the effector molecules perforin and IFN- γ was also shown to be increased in circulating iNKT cells in women with preeclampsia compared to those with a healthy pregnancy,²³¹ further indicating cell activation. The expression of CD95 was reduced on such circulating iNKT cells,²³¹ potentially indicating reduced rates of iNKT-cell apoptosis that could result in a more prolonged state of activation. However, a separate study found no differences in the counts, proportions, or CD69 expression of iNKT cells between women with preeclampsia and those with a normal pregnancy.²³² Based on these limited data, forming a firm conclusion as to the participation of iNKT cells in the pathophysiology of preeclampsia remains difficult. It is possible that iNKT-cell activity is altered (potentially enhanced) in preeclampsia without fluctuations in the overall population; yet, additional studies are required to establish this concept.

1.2.3 | Dendritic cells

Dendritic cells (DCs) are professional APCs that play a critical role in both central and peripheral tolerance²³³ and represent a central component of the innate immune system. A primary function of DCs during pregnancy is to uptake and present the paternal/fetal Ag to Tregs in the secondary lymphoid tissues, promoting maternal tolerance of the fetus.²³⁴ Thus, multiple studies have proposed that alterations in the populations and functionality of local and circulating DCs may contribute to a breakdown of maternal-fetal tolerance, thereby promoting inflammation as part of the pathogenesis of preeclampsia. Indeed, the proportions of plasmacytoid DCs (pDCs) were decreased^{235,236} and those of myeloid DCs (mDCs) were increased²³⁶ in women with preeclampsia compared to those with a healthy pregnancy. As a result, the peripheral ratio of mDCs to pDCs was also shown to be elevated.^{61,235} Consistent with reports of other immune cell subsets, early-onset and late-onset preeclampsia may each be associated with different DC responses, as one study found that pDCs were reduced only in women with early-onset preeclampsia compared to those with a normal pregnancy.⁶²

Peripheral DCs also exhibit a more activated phenotype in preeclampsia. Higher basal expression of TLR3 and TLR4 was observed on mDCs, and increased TLR9 on pDCs, in women with preeclampsia compared to those from healthy pregnancies. This finding was accompanied by elevated basal expression of cytokines, such as IL-6, TNF, and IFN- α by mDCs, as well as elevated IFN- α and TNF by pDCs.²³⁷ Such high basal cytokine expression could indicate prior activation of circulating DCs, particularly since these cells isolated from women with preeclampsia showed weaker responses

to *in vitro* stimulation with TLR ligands.²³⁷ Notably, both mDCs and pDCs also showed greater expression of the immune checkpoint molecule CD200 in women with preeclampsia compared to those with a normal pregnancy,²³⁸ potentially as a compensatory mechanism to restore immune regulation. However, the same authors showed that the expression of another immune checkpoint marker, PD-L1, was decreased on both subsets.²³⁹ Thus, the expression of immune checkpoint markers by DCs seems to be dysregulated in a specific manner in women with preeclampsia. Finally, one report demonstrated upregulation of CD80, CD86, and CD83 on peripheral DCs in women with preeclampsia compared to those with an uncomplicated pregnancy,⁶⁰ indicating greater potential for Ag presentation. This observation was supported by *in vitro* evidence that VEGF, which is downregulated in women with preeclampsia, reduces the expression of CD80, CD86, and CD83 on DCs.²³⁶ Therefore, these findings indicate an activated and pro-inflammatory state for circulating DCs in women with preeclampsia, and suggest that reduced VEGF signaling may contribute to this process.

Consistent with human studies, several investigations in animals have also reported altered systemic DC populations using preeclampsia models. Pregnant mice treated with PolyI:C (a TLR3 ligand) develop hypertension,²⁴⁰ which is in line with the increased placental expression of TLR3 in women with preeclampsia,²⁴¹ and these mice displayed higher numbers of splenic DCs and other systemic immune changes that were largely abrogated by treatment with IL-4 and IL-10.²⁴⁰ In a model of arginine vasopressin-induced preeclampsia, increased expression of MHC-II, CD80, and CD86 was observed on splenic DCs together with reduced PD-L1 and PIR-B,²⁴² which is similar to the findings reported in pregnant women.⁶⁰

Preeclampsia has also been associated with local changes in DC populations. Placental bed biopsies revealed increased numbers of CD209⁺ or CD83⁺ leukocytes (termed immature DCs and activated DCs, respectively) in tissues from women with preeclampsia compared to tissues from normal pregnancies.²⁴³ In the decidua, tissue-specific up-regulation of the chemokines CCL2, CCL4, CCL7, and CCL20 was observed in women with preeclampsia, providing a potential mechanism whereby immune cells, including DCs, may migrate to this compartment.²⁴³ Indeed, *in vitro* studies of first-trimester decidual cells suggested that the upregulation of CCL2 and CCL5 is particularly impactful in promoting the chemotaxis of DCs and macrophages.²⁴⁴ Decidual cells from women with preeclampsia also expressed high levels of GM-CSF compared to those from normal pregnancies, and the stimulated first-trimester decidual cells released GM-CSF that promoted the *in vitro* differentiation of peripheral monocytes to dendritic cells and macrophages.²⁴⁵ Moreover, *in vivo* experiments revealed that the observed increase in decidual GM-CSF expression was accompanied by the infiltration of DCs and macrophages into this compartment.²⁴⁵ Dendritic cells may also respond to signals released by apoptotic extravillous trophoblasts (EVTs), as immunohistochemistry analyses showed the co-localization of these cells in the decidua/myometrium of women with IUGR.²⁴⁶ The increased number of mature decidual DCs identified in women with preeclampsia was attributed, in part, to phosphorylated STAT3 and the DC-specific long noncoding RNA Inc-DC,²⁴⁷ both of which showed increased expression

in the decidual tissue.²⁴⁸ In addition, *in vitro* studies suggested that Inc-DC signaling by mature decidual DCs may participate in the regulation of trophoblast invasion.²⁴⁹

The combination of a greater number of infiltrating DCs together with their enhanced activation and/or accelerated maturation may contribute to the pathogenesis of preeclampsia. Yet, how the dysregulated activity of DCs in women with preeclampsia affects the processing and presentation of paternal/fetal Ags, and the extent of the relationship between DCs and impaired Tregs in such women, requires further research.

1.2.4 | Neutrophils

The majority of investigations into the role of neutrophils in preeclampsia have focused on these cells in the maternal circulation, given the systemic intravascular inflammation associated with this pregnancy complication.^{29,30,107,250} Early reports noted elevated numbers of polymorphonuclear cells expressing complement and immunoglobulins in the circulation of preeclamptic women compared to those with a normal pregnancy²⁵¹ as well as elevated plasma concentrations of neutrophil elastase,^{252–255} suggesting neutrophil activation. Subsequently, several other studies provided demonstrations of neutrophilia in women with preeclampsia^{256,257} and noted that the systemic numbers of other immune cell subsets were not as drastically altered,²⁵⁷ given that the neutrophil-to-lymphocyte ratio was also significantly increased.²⁵⁸ Moreover, preeclampsia-associated neutrophilia was likely further exacerbated by the reported impaired or delayed neutrophil apoptosis occurring in such patients.²⁵⁹ Elevated neutrophil proportions, adhesion, and infiltration were reported in subcutaneous fat microvessels from women with preeclampsia compared to those from normal pregnant women,^{260,261} further indicating the systemic nature of preeclampsia-associated neutrophilia. Moreover, correlations between increased isovolumetric venous pressure and maternal plasma levels of neutrophil elastase, VCAM-1, and E-selectin were also demonstrated.²⁵⁵

Peripheral neutrophils are phenotypically altered in women with preeclampsia as well,^{250,262–265} showing greater nuclear translocation of NF- κ B^{264,266} and increased expression of surface markers, such as CD11b,^{250,263} together with reduced expression of CD62L,^{250,263–265} compared to those from normal pregnancies, thus indicating neutrophil activation. Circulating neutrophils were also shown to have reduced expression of TLR2 and TLR4 in women with preeclampsia compared to normal pregnant women.²⁶⁷ However, a later study reported increased mRNA and surface protein expression of TLR2 and TLR4 in neutrophils from women with early-onset preeclampsia and HELLP syndrome, whereas those from women with late-onset preeclampsia were similar to controls.²⁶⁸ Thus, it is possible that the two studies differed due to heterogeneous study populations as well as disease severity.

Neutrophil functions are also altered in women with preeclampsia, likely driven by the presence of circulating placenta-derived factors.^{269–271} Indeed, conditioned media obtained from placental explants of women with preeclampsia increased neutrophil-endothelial cell adhesion compared to that of healthy placentas, which

seemed to be driven by the endothelial-derived platelet-activating factor (PAF).²⁶⁹ Circulating endothelial microparticles were linked to the greater systemic levels of double-stranded (ds)DNA, myeloperoxidase, and histones (components of neutrophil extracellular traps or NETs) found in women with preeclampsia.²⁷¹ Consistently, it was recently reported that the elevated levels of the proteases neutrophil elastase and matrix metalloproteinase 1 (MMP-1) found in the plasma of women with preeclampsia can also contribute to enhanced neutrophil activation.²⁷² Superoxide production by circulating neutrophils is also increased in women with preeclampsia compared to those with a healthy pregnancy,^{270,273} and such a phenomenon was reproduced *in vitro* by the co-culture of neutrophils and syncytiotrophoblast-derived microparticles (STBM) isolated from preeclamptic women.²⁷⁰ One report noted that superoxide-anion production by circulating granulocytes typically decreases in normal pregnancy, but not in preeclampsia, compared to the non-pregnant state, and may thus contribute to the subsequent systemic inflammation and/or endothelial damage.²⁷⁴ Finally, neutrophil migration is affected by the excess levels of sFlt-1 in women with preeclampsia, since high concentrations of this molecule may prevent VEGF-mediated signaling in these cells.²⁷⁵ Neutrophils themselves likely contribute to the systemic inflammatory response of preeclampsia in a positive feedback manner, as 2 studies have indicated an increase in neutrophil-derived microparticles in women with this obstetrical syndrome.^{276,277} Importantly, the contribution of placenta-derived and vascular circulating microparticles to the pathophysiology of preeclampsia is likely further exaggerated by the reduced phagocytic clearance of such microparticles by circulating neutrophils.^{278,279}

The above-noted studies strongly suggest that the factors initiating systemic neutrophil responses likely originate from the placenta. In line with this proposed model, an *ex vivo* study reported that activated neutrophils are found in the uterine vein, but not in the antecubital placental vein, of women who underwent cesarean section due to preeclampsia.²⁸⁰ Moreover, the co-culture of neutrophils and endothelial cells in conditioned medium from the placentas of preeclamptic women resulted in enhanced neutrophil-endothelial cell adhesion compared to conditioned media from healthy pregnancies.²⁸¹ The stratification of preeclampsia cases into clusters based on their placental transcriptional signatures demonstrated an increased presence of neutrophils in the placentas of women with "immunological" (transcriptional/epigenetic signature corresponding to increased immune responses) preeclampsia compared to those from women with a milder form of preeclampsia (characterized by a healthy placenta and term delivery).²⁸² In addition, one study demonstrated the formation of NETs in the placental intervillous space from women with preeclampsia, and placenta-derived IL-8 and STBM caused NET formation *in vitro*.²⁸³ Thus, while the consideration of local mechanisms occurring in preeclampsia is important, understanding the systemic immune responses driven by placenta-derived factors or patient co-morbidities also warrants attention. Together, the above-noted reports demonstrate the enhanced activation of circulating neutrophils in women with preeclampsia and emphasize the role of placenta-derived circulating factors in the activation of such cells.

Mechanistic studies have explored whether neutrophils could be targeted to treat preeclampsia. The depletion of neutrophils, using an anti-polymorphonuclear leukocyte (anti-PMN) Ab in a RUPP rat model of preeclampsia, lowered mean arterial pressure in RUPP rats without having noticeable effects in sham rats; however, systemic C3a levels and RUPP-induced fetal loss were unmitigated.²⁸⁴ This finding suggests that neutrophils are not the major cause of fetal damage resulting from preeclampsia and that they may be primarily involved in propagating maternal systemic responses.

Myeloid-derived suppressor cells (MDSCs) represent a heterogeneous population of immature neutrophils [granulocytic (g)-MDSCs] and monocytes [monocytic (m)-MDSCs] that display immunosuppressive properties.^{285,286} Several prior studies have implicated MDSCs in the maintenance of maternal-fetal tolerance,²⁸⁷⁻²⁸⁹ and one report demonstrated a significant reduction of g-MDSCs in the circulation of preeclamptic women compared to those with a healthy pregnancy, which was accompanied by a systemic decrease in arginase-1 (Arg1) levels.²⁹⁰ Thus, the loss of g-MDSC-mediated immunomodulation may allow for the further dysregulation of peripheral neutrophil responses in preeclampsia; however, this concept requires further investigation.

The above-noted studies demonstrate the massive activation of neutrophils that occurs as part of the pathophysiology of preeclampsia, which is likely exacerbated by reduced or impaired MDSC activity. Given their systemic dominance, neutrophils may act as important propagators of inflammation by rapidly responding to placenta-derived factors present in the maternal circulation of women with this clinical condition.

1.2.5 | Monocytes

After neutrophils, monocytes are the most frequent circulating immune cells and are thus likely to participate in the vascular immune responses that are a hallmark of preeclampsia.²⁵⁰ Indeed, the proportions of total CD14⁺ monocytes were elevated in women with preeclampsia compared to normotensive controls.²⁰⁶ Such an increase was likely driven by changes in the composition of the monocyte population, as the proportions of non-classical CD14^{lo}CD16^{hi} monocytes were elevated in women with preeclampsia,²⁹¹ and the proportions of this monocyte subset increased toward the end of pregnancy in a rat ATP infusion model of preeclampsia.^{292,293} By contrast, significantly higher proportions of intermediate (CD14^{hi}CD16^{int}) monocytes were reported in women with preeclampsia without changes in the classical or non-classical subsets.²⁹² Therefore, the proportions of systemic monocytes seem to be enhanced in women with preeclampsia, although the specific affected subsets remain to be confirmed. As an alternative approach, the categorization of monocytes as M1-like (CD14⁺CD11c⁺CD163⁻) or M2-like (CD14⁺CD11c⁻CD163⁺) cells demonstrated that a significant increase in the M1-like subset occurs in women with preeclampsia compared to normal pregnancies, which is accompanied by reduced levels of M2-like monocytes.²⁹⁴ Such a bias toward M1-like responses is supported by the decreased expression of CD163 on peripheral monocytes from women with

preeclampsia.²⁹⁵ Studies have also pointed out enhanced expression of TLR4 by monocytes in women with preeclampsia^{291,296}; moreover, total monocytes from preeclamptic women demonstrated significantly increased cytokine secretion in response to *in vitro* stimulation with TLR ligands,^{291,296} further supporting the pro-inflammatory phenotype of such cells. Thus, the immune response in women with preeclampsia is characterized by alterations in the phenotypic composition of circulating monocytes.

Due to the importance of immune-endothelial interactions in the pathophysiology of preeclampsia, studies have also examined the monocyte-specific expression of potentially involved surface molecules. One report found no significant differences in the expression of integrins such as CD11a, CD11b, and CD11c between monocytes from women with preeclamptic or normal pregnancies; however, *in vitro* treatment of endothelial cells with serum from preeclamptic women increased their expression of ICAM-1, an adhesion receptor that regulates the recruitment of circulating leukocytes,²⁹⁷ suggesting that soluble factors in the maternal serum rather than monocyte-endothelial cell interaction may drive endothelial activation.²⁹⁸ By contrast, other studies demonstrated increased CD11b expression^{250,299,300} together with decreased expression of CD62L^{250,299} on monocytes from women with preeclampsia. Interestingly, such a discrepancy may be explained by the fact that the expression of integrins CD11a, CD11c, and CD49d as well as the complement-related markers CD46 and CD59 on monocytes was significantly higher in samples obtained from uterine veins compared to antecubital veins in women with preeclampsia.²⁸⁰ Thus, monocytes migrating in close proximity to the placenta may undergo greater exposure to factors released by this organ that may contribute to cellular activation.

Elevated baseline levels of ROS production have also been observed in monocytes derived from women with preeclampsia compared to those from healthy pregnancies.^{250,299} Pregnancy is characterized by a physiological elevation in arginine uptake by peripheral leukocytes, mediated primarily through system γ + (encoded by the genes *CAT1*, *CAT2*, and *CAT3*).³⁰¹ Notably, in peripheral leukocytes from preeclamptic women, system γ + mediated arginine uptake was significantly lower than in normal pregnancy despite increased transcription of *CAT2*, thus suggesting impairment of this pathway.³⁰¹ It was proposed that such arginine deficiency would favor the production of harmful O_2^- and $ONOO^-$ radicals,³⁰¹ thereby contributing to systemic oxidative stress in women with preeclampsia. Yet, this phenomenon could be partially remedied by the activation of compensatory glutathione peroxidases (GPx), as elevated mRNA and protein levels of GPx-1 and GPx-4 were detected in peripheral mononuclear cells from preeclamptic women compared to those from women with a normotensive pregnancy.³⁰²

A large component of monocyte function is the production of cytokines. Multiple studies have shown that, in women with preeclampsia, monocyte cytokine production is heavily skewed toward the release of pro-inflammatory mediators such as TNF and IL-12^{27,296,303,304} as well as IL-8, IL-6, and IL-1 β ,^{305,306} typically accompanied by reduced IL-10 levels.²⁹⁶ This general upregulation of inflammatory responses is likely driven by upstream signaling, which

may include the silencing or inhibition of immunomodulatory factors such as $\alpha 7$ nicotinic acetylcholine receptors ($\alpha 7nAChR$) that suppress pro-inflammatory cytokine pathways.³⁰⁷ Accordingly, monocytes isolated from women with preeclampsia displayed higher expression of inflammasome-related molecules (e.g., NLRP3, NLRP1, and caspase-1) and NF- κ B together with reduced expression of the NF- κ B-inhibitor I κ B α compared to those from normotensive women.³⁰⁸ *In vitro* assays demonstrated that multiple alarmins (i.e. endogenous molecules that initiate non-infectious or sterile inflammation^{309,310}), such as monosodium urate,³⁰⁸ heat shock protein 70,³⁰⁶ and hyaluronan,³⁰⁶ can propagate pro-inflammatory monocyte responses, thereby implicating the inflammasome pathway in the pathophysiology of preeclampsia, a topic that was recently reviewed.³¹¹ It is tempting to suggest that alarmins could be released from apoptotic trophoblasts or damaged endothelium in women with preeclampsia, leading to monocyte activation; yet, this concept requires further investigation.

In light of current knowledge of the pathogenesis of preeclampsia, the relationship between monocytes and other involved tissues (i.e., the placenta/trophoblast and vascular endothelium) is not entirely clear. Monocytes from preeclamptic women were shown to inhibit trophoblast proliferation in an *in vitro* system, and such monocytes also induced higher rates of trophoblast apoptosis than those from healthy pregnancies.³⁰³ However, monocytes from both preeclamptic and normal pregnancies showed similar binding of STBM²⁷; thus, it is possible that such microparticles are not the primary drivers of monocyte activation in this context. This concept is further suggested by the fact that incubation of peripheral monocytes with preeclamptic or normal pregnancy-derived STBMs caused only modest changes in surface marker expression or cytokine release.³¹²

Another factor that adds to the complexity of monocyte interactions in women with preeclampsia is the involvement of the coagulation system. Both preeclamptic and healthy pregnant women had higher proportions of monocytes with bound platelets compared to non-pregnant women after *in vitro* adenosine diphosphate (ADP) stimulation, and the numbers of bound platelets per monocyte were also increased.³¹³ Moreover, platelet-monocyte aggregates from women with preeclampsia released higher levels of sFlt-1 than those from healthy pregnant or nonpregnant women.³¹⁴ Fibrinogen, an acute-phase protein that is released during inflammation and displays multiple immune interactions,³¹⁵ was elevated in the circulation of preeclamptic women and increased *in vitro* cytokine production by preeclampsia-derived monocytes compared to those from normotensive pregnancies.³¹⁶ Interestingly, fibrinogen treatment also reduced the levels of sFlt-1 present in a co-culture system of preeclampsia-derived monocytes and endothelial cells, suggesting that fibrinogen exerts distinct and unrelated effects on the cytokine production and angiogenesis pathways as part of the pathophysiology of preeclampsia.³⁰⁵

The above-noted studies highlight the complex network of interactions that takes place between monocytes, the placenta, and the maternal vasculature, and how dysregulation or impairment of one component can affect monocytes and potentially other circulating immune cells, leading to systemic responses. An important topic of future

research in the pathogenesis of preeclampsia will be the unraveling of such interactions to determine cause versus effect, specifically in regards to monocyte activation and polarization.

1.2.6 | Macrophages

Distinct macrophage populations are well described in tissues such as the decidua^{317–319} and placenta.³²⁰ Such macrophages have also been implicated in several aspects of the pathophysiology of preeclampsia, including the progression of acute atherosclerosis,^{321,322} a lesion of the spiral arteries that often accompanies this pregnancy disease.^{5,323–326} One of the first examples of such involvement was the morphological identification of lipid-scavenging macrophages in the uteroplacental arteries.³²³ Similarly, immunohistochemical analysis showed that macrophages surround and infiltrate the decidual spiral arteries in preeclamptic women,^{327,328} potentially mediated by ICAM-1⁺ and HLA-DR⁺ endothelial cytotrophoblasts.³²⁸ Finally, macrophage infiltration of the spiral arteries in the decidua³²⁸ and myometrium³²⁹ was greater in women with preeclampsia than in those with a healthy pregnancy. Whether such macrophage infiltration is a local or a tissue-wide phenomenon in preeclampsia remains unclear, as some reports found similar numbers of CD14⁺ and/or CD68⁺ macrophages in the placental beds of preeclamptic women and those with a healthy pregnancy,³³⁰ while others reported an increase in these cells.^{176,331} Regardless, the increased localization of macrophages to the spiral arteries appears to be a common feature in women with preeclampsia.

Macrophages seem to be skewed toward a pro-inflammatory state in women with preeclampsia, although the question of cause versus effect remains unanswered. Placentas from women who had preeclampsia contained higher proportions of M1-like CD11b⁺ inducible nitric oxide synthase (iNOS)⁺ macrophages and simultaneously lower proportions of M2-like CD11b⁺Arg1⁺ macrophages compared to those from women with a healthy pregnancy.²⁹⁴ The expression of iNOS was noted in Hofbauer cells (placental macrophages), but no differences were shown among women with normal pregnancy, preeclampsia, or IUGR.³³² However, the decidual tissues from a preeclampsia-prone BPH/5 mouse model displayed elevated mRNA expression of iNOS.³³³ Thus, changes in the expression of iNOS during the pathogenesis of preeclampsia may depend on macrophage polarization status as well as tissue-specific differences. In line with this concept, flow cytometric analyses of decidual tissues with lesions of acute atherosclerosis demonstrated increased proportions of M1-like macrophages expressing CD80, iNOS, or IL-12 compared to unaffected tissues.³²² Similar tendencies were observed in an animal model of LPS-induced hypertension in which decidual M2-like macrophages were reduced, as was the expression of the immune checkpoint marker TIM-3 by such cells.³³⁴ Notably, the administration of the TIM-3 ligand galectin-9 increased M2-like macrophage polarization and improved maternal/fetal parameters,³³⁴ suggesting that the TIM-3/galectin-9 pathway could be implicated in altered macrophage functions in cases of preeclampsia. In tandem with these observations, the proportion of CD206⁺ M2-like macrophages was decreased in the

mesometrial triangle in a rat model of ATP-induced preeclampsia.²⁹² Thus, the pathogenesis of preeclampsia may be associated with an imbalance between M1-like and M2-like macrophages. Such imbalance could potentially be driven by placental defects, as it was recently reported that a first-trimester trophoblast cell line secretes soluble PD-L1 that promotes an anti-inflammatory M2-like macrophage phenotype *in vitro*.³³⁵ Moreover, soluble PD-L1 levels increased throughout the first trimester in normal pregnant women³³⁵; yet, whether alterations in the relationship between trophoblasts and macrophages occur in women with preeclampsia requires further investigation.

Outside of the strict M1-M2 paradigm, two less well-described macrophage subsets have also been detected in decidual tissues from women with acute atherosclerosis³²²: Mhem³³⁶ and MOX³³⁷ macrophages, both of which can express the anti-inflammatory molecule HMOX-1.³³⁸ HMOX-1 has been shown to play important roles in placental development³³⁹ and maternal-fetal tolerance³⁴⁰; thus, the presence of macrophages expressing this molecule may represent a physiological response to the oxidative stress and inflammation occurring in women with preeclampsia. The molecule CD74 (MHC-II invariant chain Ii³⁴¹) may also be an important regulator of these cells, as CD74⁺ macrophages were shown to be reduced in the placentas of preeclamptic women compared to those with a normotensive pregnancy, and mice deficient for this molecule display perturbed placental development and spiral artery remodeling accompanied by fetal growth restriction.³⁴² Such findings may be due, in part, to the shift toward a pro-inflammatory phenotype that occurs in CD74-deficient macrophages.³⁴² Macrophage phenotypes were investigated in spontaneously preeclamptic BPH/5 mice based on the decidual CD11c-expressing subsets originally described by Houser et al.,³⁴³ and the proportion of IL-10-producing CD11c^{hi} macrophages was decreased in the murine decidua while that of CD11c^{lo} macrophages were elevated.³³³ Together, these reports further indicate the plasticity of macrophages in the decidua and placenta, and support the polarization of such cells toward more pro-inflammatory phenotypes outside of the M1-M2 dichotomy in women with preeclampsia.

Immunohistochemistry studies showed poor trophoblast invasion of the spiral arteries as well as the co-localization of apoptotic trophoblasts and macrophages in women with preeclampsia,³⁴⁴ suggesting that macrophages may promote trophoblast apoptosis in such cases. Several *in vitro* studies strengthened this concept by demonstrating that the co-culture of macrophages with a trophoblast cell line led to increased trophoblast apoptosis, which was reversed by the addition of Abs against TNF receptor 1 (TNF-R1) and tryptophan.³⁴⁴ Such functions may be restricted to activated or M1-primed macrophages, as LPS treatment of such cells greatly enhanced their TNF-mediated prevention of trophoblast invasion *in vitro*³⁴⁵ and was largely reversed by exposure of LPS-activated macrophages to IL-10.³⁴⁶ Dysregulated corticotropin-releasing hormone (CRH) may contribute to this process, as this molecule was increased in EVT₁s derived from the placentas of preeclamptic women compared to those from normal pregnancies and upregulated the expression of Fas ligand (FasL) by macrophages *in vitro*, resulting in apoptosis of a trophoblast cell line.³⁴⁷ The mRNA and

protein expression of cyclooxygenase-1 (COX-1), an important component of the prostaglandin synthesis pathway, was also elevated in the placental beds of preeclamptic women and was localized to placental cells, including macrophages.³⁴⁸ Such enhanced placental expression of COX-1 may indicate a compensatory response to local and/or systemic inflammation in women with preeclampsia.

In addition to the apoptosis and prostaglandin pathways, previous studies have also implicated the complement system in the pathophysiology of preeclampsia.^{349–351} Plasma levels of C5a were elevated in women with preeclampsia compared to those with a non-preeclamptic pregnancy,^{254,349,352} and it was subsequently shown that this factor was localized to placental CD11b⁺ macrophages and caused dysregulation of trophoblast invasiveness.³⁵² Thus, it appears that multiple macrophage signaling pathways are affected in women with preeclampsia, subsequently resulting in altered functionality of these cells.

Taken together, the above-noted studies establish the accumulation of macrophages in response to impaired spiral artery remodeling and their enhanced polarization toward a pro-inflammatory phenotype as contributing factors in the pathogenesis of preeclampsia. Given that aberrant M1-like macrophage polarization has been associated with other pregnancy complications, such as preterm labor and birth,³¹⁷ the specific targeting of these cells or restoration of the overall pro-/anti-inflammatory balance may represent potential strategies to improve pregnancy outcomes in women with preeclampsia.

1.2.7 | Mast cells

Mast cells participate in the systemic responses observed in women with preeclampsia, although they are not likely to be primary players.^{353–355} An early study identified increased proportions of mast cells and higher histamine concentrations in placental tissues from preeclamptic women compared to those from normal pregnancies.³⁵³ Such observations were strengthened by the increased density and reduced mean area of mast cells in the placental tissues of preeclamptic women, potentially indicating their degranulation or activation.³⁵⁴ By contrast, the numbers of cells expressing human mast-cell chymase were decreased in the placenta but elevated in the myometrial tissues of women with severe preeclampsia compared to healthy pregnant women.³⁵⁵ Similarly, the number of cells positive for endothelin-1, a downstream product of human mast-cell chymase cleavage of big endothelins,³⁵⁶ was also decreased in the placenta and increased in the myometrium from women with severe preeclampsia.³⁵⁵ Together, these limited reports indicate the potential involvement of mast cells in the pathophysiology of preeclampsia; however, mechanistic studies are required to demonstrate the participation of these cells.

1.3 | Closing remarks

In the current review, we summarize the critical involvement of the cellular immune system in the pathogenesis of preeclampsia.

The reviewed literature reveals that preeclampsia involves a complex relationship between the maternal immune system and the placenta as well as other pathophysiological processes. Notably, women with preeclampsia are characterized by an exacerbated intravascular inflammatory response, which is likely triggered by factors released by the dysfunctional placenta. Such dysregulation also includes aberrant cellular immune responses in the reproductive tissues and maternal-fetal interface, which further contributes to the pathophysiology of preeclampsia. Yet, such immune responses may differ depending on disease severity and the early-onset or late-onset disease type, which has implications for the diagnosis, management, and treatment of women with preeclampsia.

Despite the large body of evidence demonstrating the close involvement of the cellular immune system in pathophysiology of preeclampsia, efforts to translate such findings and thereby improve the clinical care of women with this obstetrical syndrome are still lacking. Thus, future investigations should seek to generate translationally useful results and models that can advance the prevention, diagnosis, and/or treatment of preeclampsia. Specifically, the incorporation of recently emerging technologies, such as single-cell RNA-sequencing, together with large-scale longitudinal study designs^{319,357,358} may be able to provide potential immunological biomarkers or novel therapeutic strategies to treat the devastating effects of this obstetrical syndrome.

AUTHORSHIP

D.M.: Investigation, Writing – Original Draft, Writing – Review, Editing, and Revision

K.M.: Investigation, Writing – Original Draft, Writing – Review, Editing, and Revision

J.G.: Investigation, Writing – Original Draft, Writing – Review, Editing, and Revision

M.G.: Investigation, Writing – Original Draft, Writing – Review, Editing, and Revision

E.D.L.: Investigation, Writing – Review, Editing, and Revision

R.R.: Conceptualization, Investigation, Writing – Review, Editing, and Revision

N.G-L.: Conceptualization, Investigation, Writing – Original Draft, Writing – Review, Editing, and Revision

ACKNOWLEDGMENTS

This research was supported, in part, by the Perinatology Research Branch, Division of Obstetrics and Maternal-Fetal Medicine, Division of Intramural Research, Eunice Kennedy Shriver National Institute of Child Health and Human Development, National Institutes of Health, U.S. Department of Health and Human Services (NICHD/NIH/DHHS); and, in part, with Federal funds from NICHD/NIH/DHHS under Contract No. HHSN275201300006C. Dr. Romero has contributed to this work as part of his official duties as an employee of the United States Federal Government. This research was also supported by the Wayne State University Perinatal Initiative in Maternal, Perinatal and Child Health. The funders had no role in the study design, data collection, and analysis, decision to publish, or preparation of the manuscript.

DISCLOSURE

The authors declare no conflict of interest.

REFERENCES

- Redman CW, Sargent IL. Latest advances in understanding preeclampsia. *Science*. 2005; 308: 1592-1594.
- Chaiworapongsa T, Chaemsaihong P, Yeo L, Romero R. Preeclampsia part 1: current understanding of its pathophysiology. *Nat Rev Nephrol*. 2014; 10: 466-480.
- Poon LC, Shennan A, Hyett JA, et al. The International Federation of Gynecology and Obstetrics (FIGO) initiative on pre-eclampsia: a pragmatic guide for first-trimester screening and prevention. *Int J Gynaecol Obstet*. 2019; 145: 1-33.Suppl.
- Romero R. Prenatal medicine: the child is the father of the man. *J Matern Fetal Neonatal Med*. 1996; 22: 636-639.
- Brosens I, Puttemans P, Benagiano G. Placental bed research: i. The placental bed: from spiral arteries remodeling to the great obstetrical syndromes. *Am J Obstet Gynecol*. 2019; 221: 437-456.
- American College of O. and Gynecologists' Committee on Practice, B.-O. Gestational Hypertension and Preeclampsia: aCOG Practice Bulletin, Number 222. *Obstet Gynecol* 2020; 135:e237-e260.
- Douglas KA, Redman CW. Eclampsia in the United Kingdom. *BMJ*. 1994; 309: 1395-1400.
- Mattar F, Sibai BMEclampsiaVIII. Risk factors for maternal morbidity. *Am J Obstet Gynecol*. 2000; 182: 307-312.
- McDermott M, Miller EC, Rundek T, Hurn PD, Bushnell CD. Preeclampsia: association With Posterior Reversible Encephalopathy Syndrome and Stroke. *Stroke*. 2018; 49: 524-530.
- Miller EC. Preeclampsia and Cerebrovascular Disease. *Hypertension*. 2019;74 (1):5-13.
- Vaught AJ, Kovell LC, Szymanski LM, et al. Acute Cardiac Effects of Severe Pre-Eclampsia. *J Am Coll Cardiol*. 2018; 72: 1-11.
- Orabona R, Sciatti E, Prefumo F, et al. Pre-eclampsia and heart failure: a close relationship. *Ultrasound Obstet Gynecol*. 2018; 52: 297-301.
- Sibai BM. The HELLP syndrome (hemolysis, elevated liver enzymes, and low platelets): much ado about nothing?. *Am J Obstet Gynecol*. 1990; 162: 311-316.
- Long PA, Abell DA, Beischer NA. Fetal growth retardation and preeclampsia. *Br J Obstet Gynaecol*. 1980; 87: 13-18.
- Basso O, Rasmussen S, Weinberg CR, Wilcox AJ, Irgens LM, Skjaerven R. Trends in fetal and infant survival following preeclampsia. *JAMA*. 2006; 296: 1357-1362.
- Mongraw-Chaffin ML, Cirillo PM, Cohn BA. Preeclampsia and cardiovascular disease death: prospective evidence from the child health and development studies cohort. *Hypertension*. 2010; 56: 166-171.
- Staff AC, Redman CW, Williams D, et al. Global Pregnancy, C. Pregnancy and Long-Term Maternal Cardiovascular Health: progress Through Harmonization of Research Cohorts and Biobanks. *Hypertension*. 2016; 67: 251-260.
- Lu HQ, Hu R. Lasting Effects of Intrauterine Exposure to Preeclampsia on Offspring and the Underlying Mechanism. *AJP Rep*. 2019; 9: e275-e291.
- Redman CW. Current topic: pre-eclampsia and the placenta. *Placenta*. 1991; 12: 301-308.
- Burton GJ, Redman CW, Roberts JM, Moffett A. Pre-eclampsia: pathophysiology and clinical implications. *BMJ*. 2019; 366: l2381.
- Staff AC. The two-stage placental model of preeclampsia: an update. *J Reprod Immunol*. 2019; 134-135: 1-10.
- Brosens IA, Robertson WB, Dixon HG. The role of the spiral arteries in the pathogenesis of preeclampsia. *Obstet Gynecol Annu*. 1972; 1: 177-191.
- Maynard SE, Min JY, Merchan J, et al. Excess placental soluble fms-like tyrosine kinase 1 (sFlt1) may contribute to endothelial dysfunction, hypertension, and proteinuria in preeclampsia. *J Clin Invest*. 2003; 111: 649-658.
- Levine RJ, Maynard SE, Qian C, et al. Circulating angiogenic factors and the risk of preeclampsia. *N Engl J Med*. 2004; 350: 672-683.
- Venkatesha S, Toporsian M, Lam C, et al. Soluble endoglin contributes to the pathogenesis of preeclampsia. *Nat Med*. 2006; 12: 642-649.
- Knight M, Redman CW, Linton EA, Sargent IL. Shedding of syncytiotrophoblast microvilli into the maternal circulation in preeclamptic pregnancies. *Br J Obstet Gynaecol*. 1998; 105: 632-640.
- Germain SJ, Sacks GP, Sooranna SR, Sargent IL, Redman CW. Systemic inflammatory priming in normal pregnancy and preeclampsia: the role of circulating syncytiotrophoblast microparticles. *J Immunol*. 2007; 178: 5949-5956.
- Chiarello DI, Abad C, Rojas D, et al. Oxidative stress: normal pregnancy versus preeclampsia. *Biochim Biophys Acta Mol Basis Dis*. 2020; 1866: 165354.
- Borzychowski AM, Sargent IL, Redman CW. Inflammation and preeclampsia. *Semin Fetal Neonatal Med*. 2006; 11: 309-316.
- Than NG, Romero R, Tarca AL, et al. Integrated Systems Biology Approach Identifies Novel Maternal and Placental Pathways of Preeclampsia. *Front Immunol*. 2018; 9: 1661.
- Sargent IL, Borzychowski AM, Redman CW. NK cells and human pregnancy—an inflammatory view. *Trends Immunol*. 2006; 27: 399-404.
- Tersigni C, Redman CW, Dragovic R, et al. HLA-DR is aberrantly expressed at feto-maternal interface in pre-eclampsia. *J Reprod Immunol*. 2018; 129: 48-52.
- Fontenot JD, Gavin MA, Rudensky AY. Foxp3 programs the development and function of CD4+CD25+ regulatory T cells. *Nat Immunol*. 2003; 4: 330-336.
- Hori S, Nomura T, Sakaguchi S. Control of regulatory T cell development by the transcription factor Foxp3. *Science*. 2003; 299: 1057-1061.
- Campbell C, Rudensky A. Roles of Regulatory T Cells in Tissue Pathophysiology and Metabolism. *Cell Metab*. 2020; 31: 18-25.
- Alvarez F, Al-Aubodah TA, Yang YH, Piccirillo CA. Mechanisms of TREG cell adaptation to inflammation. *J Leukoc Biol*. 2020; 108: 559-571.
- Chaouat G, Petitbarat M, Dubanchet S, Rahmati M, Ledee N. Tolerance to the foetal allograft?. *Am J Reprod Immunol*. 2010; 63: 624-636.
- Arck PC, Hecher K. Fetomaternal immune cross-talk and its consequences for maternal and offspring's health. *Nat Med*. 2013; 19: 548-556.
- Bonney EA. Alternative theories: pregnancy and immune tolerance. *J Reprod Immunol*. 2017; 123: 65-71.
- Aluvihare VR, Kallikourdis M, Betz AG. Regulatory T cells mediate maternal tolerance to the fetus. *Nat Immunol*. 2004; 5: 266-271.
- Sasaki Y, Sakai M, Miyazaki S, Higuma S, Shiozaki A, Saito S. Decidual and peripheral blood CD4+CD25+ regulatory T cells in early pregnancy subjects and spontaneous abortion cases. *Mol Hum Reprod*. 2004; 10: 347-353.
- Zenclussen AC, Gerlof K, Zenclussen ML, et al. Abnormal T-cell reactivity against paternal antigens in spontaneous abortion: adoptive transfer of pregnancy-induced CD4+CD25+ T regulatory cells prevents fetal rejection in a murine abortion model. *Am J Pathol*. 2005; 166: 811-822.
- Kahn DA, Baltimore D. Pregnancy induces a fetal antigen-specific maternal T regulatory cell response that contributes to tolerance. *Proc Natl Acad Sci U S A*. 2010; 107: 9299-9304.
- Shima T, Sasaki Y, Itoh M, et al. Regulatory T cells are necessary for implantation and maintenance of early pregnancy but not late pregnancy in allogeneic mice. *J Reprod Immunol*. 2010; 85: 121-129.
- Guerin LR, Moldenhauer LM, Prins JR, Bromfield JJ, Hayball JD, Robertson SA. Seminal fluid regulates accumulation of FOXP3+ regulatory T cells in the preimplantation mouse uterus through

- expanding the FOXP3+ cell pool and CCL19-mediated recruitment. *Biol Reprod.* 2011; 85: 397-408.
46. Samstein RM, Josefowicz SZ, Arvey A, Treuting PM, Rudensky AY. Extrathymic generation of regulatory T cells in placental mammals mitigates maternal-fetal conflict. *Cell.* 2012; 150: 29-38.
 47. Rowe JH, Ertelt JM, Xin L, Way SS. Pregnancy imprints regulatory memory that sustains anergy to fetal antigen. *Nature.* 2012; 490: 102-106.
 48. Robertson SA, Guerin LR, Bromfield JJ, Branson KM, Ahlström AC, Care AS. Seminal fluid drives expansion of the CD4+CD25+ T regulatory cell pool and induces tolerance to paternal alloantigens in mice. *Biol Reprod.* 2009; 80: 1036-1045.
 49. Robertson SA, Care AS, Moldenhauer LM. Regulatory T cells in embryo implantation and the immune response to pregnancy. *J Clin Invest.* 2018; 128: 4224-4235.
 50. Jasper MJ, Tremellen KP, Robertson SA. Primary unexplained infertility is associated with reduced expression of the T-regulatory cell transcription factor Foxp3 in endometrial tissue. *Mol Hum Reprod.* 2006; 12: 301-308.
 51. Teles A, Schumacher A, Kuhnle MC, et al. Control of uterine microenvironment by foxp3(+) cells facilitates embryo implantation. *Front Immunol.* 2013; 4: 158.
 52. Sasaki Y, Darmochwal-Kolarz D, Suzuki D, et al. Proportion of peripheral blood and decidual CD4(+) CD25(bright) regulatory T cells in pre-eclampsia. *Clin Exp Immunol.* 2007; 149: 139-145.
 53. Quinn KH, Lacoursiere DY, Cui L, Bui J, Parast MM. The unique pathophysiology of early-onset severe preeclampsia: role of decidual T regulatory cells. *J Reprod Immunol.* 2011; 91: 76-82.
 54. Zhang Y, Liu Z, Tian M, et al. The altered PD-1/PD-L1 pathway delivers the 'one-two punch' effects to promote the Treg/Th17 imbalance in pre-eclampsia. *Cell Mol Immunol.* 2018; 15: 710-723.
 55. Nguyen TA, Kahn DA, Loewendorf AI. Maternal-Fetal rejection reactions are unconstrained in preeclamptic women. *PLoS One.* 2017; 12: e0188250.
 56. Gharesi-Fard B, Mobasher-Nejad F, Nasri F. The Expression of T-Helper Associated Transcription Factors and Cytokine Genes in Pre-Eclampsia. *Iran J Immunol.* 2016; 13: 296-308.
 57. Chen J, Zhao L, Wang D, et al. Contribution of regulatory T cells to immune tolerance and association of microRNA-210 and Foxp3 in preeclampsia. *Mol Med Rep.* 2019; 19: 1150-1158.
 58. Jianjun Z, Yali H, Zhiqun W, Mingming Z, Xia Z. Imbalance of T-cell transcription factors contributes to the Th1 type immunity predominant in pre-eclampsia. *Am J Reprod Immunol.* 2010; 63: 38-45.
 59. Hsu P, Santner-Nanan B, Dahlstrom JE, et al. Altered decidual DC-SIGN+ antigen-presenting cells and impaired regulatory T-cell induction in preeclampsia. *Am J Pathol.* 2012; 181: 2149-2160.
 60. Wang J, Tao YM, Cheng XY, et al. Dendritic cells derived from preeclampsia patients influence Th1/Th17 cell differentiation in vitro. *Int J Clin Exp Med.* 2014; 7: 5303-5309.
 61. Li J, Huang L, Wang S, Zhang Z. The prevalence of regulatory T and dendritic cells is altered in peripheral blood of women with preeclampsia. *Pregnancy Hypertens.* 2019; 17: 233-240.
 62. Nagayama S, Shirasuna K, Nagayama M, et al. Decreased circulating levels of plasmacytoid dendritic cells in women with early-onset preeclampsia. *J Reprod Immunol.* 2020; 141: 103170.
 63. Jung YJ, Park Y, Kim HS, et al. Abnormal lymphatic vessel development is associated with decreased decidual regulatory T cells in severe preeclampsia. *Am J Reprod Immunol.* 2018; 80: e12970.
 64. Tsuda S, Zhang X, Hamana H, et al. Clonally Expanded Decidual Effector Regulatory T Cells Increase in Late Gestation of Normal Pregnancy, but Not in Preeclampsia, in Humans. *Front Immunol.* 2018; 9:1934.
 65. Darmochwal-Kolarz D, Saito S, Rolinski J, et al. Activated T lymphocytes in pre-eclampsia. *Am J Reprod Immunol.* 2007; 58: 39-45.
 66. Steinborn A, Haensch GM, Mahnke K, et al. Distinct subsets of regulatory T cells during pregnancy: is the imbalance of these subsets involved in the pathogenesis of preeclampsia?. *Clin Immunol.* 2008; 129: 401-412.
 67. Toldi G, Svec P, Vasarhelyi B, et al. Decreased number of FoxP3+ regulatory T cells in preeclampsia. *Acta Obstet Gynecol Scand.* 2008; 87: 1229-1233.
 68. Prins JR, Boelens HM, Heimweg J, et al. Preeclampsia is associated with lower percentages of regulatory T cells in maternal blood. *Hypertens Pregnancy.* 2009; 28: 300-311.
 69. Santner-Nanan B, Peek MJ, Khanam R, et al. Systemic increase in the ratio between Foxp3+ and IL-17-producing CD4+ T cells in healthy pregnancy but not in preeclampsia. *J Immunol.* 2009; 183: 7023-7030.
 70. Steinborn A, Schmitt E, Kisielewicz A, et al. Pregnancy-associated diseases are characterized by the composition of the systemic regulatory T cell (Treg) pool with distinct subsets of Tregs. *Clin Exp Immunol.* 2012; 167: 84-98.
 71. Darmochwal-Kolarz D, Saito S, Tabarkiewicz J, et al. Apoptosis signaling is altered in CD4(+)CD25(+)FoxP3(+) T regulatory lymphocytes in pre-eclampsia. *Int J Mol Sci.* 2012; 13: 6548-6560.
 72. Toldi G, Saito S, Shima T, et al. The frequency of peripheral blood CD4+ CD25high FoxP3+ and CD4+ CD25- FoxP3+ regulatory T cells in normal pregnancy and pre-eclampsia. *Am J Reprod Immunol.* 2012; 68: 175-180.
 73. Darmochwal-Kolarz D, Kludka-Sternik M, Tabarkiewicz J, et al. The predominance of Th17 lymphocytes and decreased number and function of Treg cells in preeclampsia. *J Reprod Immunol.* 2012; 93: 75-81.
 74. Moreno-Eutimio MA, Tovar-Rodriguez JM, Vargas-Avila K, et al. Increased serum levels of inflammatory mediators and low frequency of regulatory T cells in the peripheral blood of preeclamptic Mexican women. *Biomed Res Int.* 2014; 2014: 413249.
 75. Tian M, Zhang Y, Liu Z, Sun G, Mor G, Liao A. The PD-1/PD-L1 inhibitory pathway is altered in pre-eclampsia and regulates T cell responses in pre-eclamptic rats. *Sci Rep.* 2016; 6: 27683.
 76. Zhang Z, Liu H, Shi Y, et al. Increased circulating Th22 cells correlated with Th17 cells in patients with severe preeclampsia. *Hypertens Pregnancy.* 2017; 36: 100-107.
 77. Salazar Garcia MD, Mobley Y, Henson J, et al. Early pregnancy immune biomarkers in peripheral blood may predict preeclampsia. *J Reprod Immunol.* 2018; 125: 25-31.
 78. Zare M, Namavar Jahromi B, Gharesi-Fard B. Analysis of the frequencies and functions of CD4(+)CD25(+)CD127(low/neg), CD4(+)HLA-G(+), and CD8(+)HLA-G(+) regulatory T cells in pre-eclampsia. *J Reprod Immunol.* 2019; 133: 43-51.
 79. Jabalie G, Ahmadi M, Koushaei L, et al. Metabolic syndrome mediates proinflammatory responses of inflammatory cells in preeclampsia. *Am J Reprod Immunol.* 2019; 81: e13086.
 80. Yu J, Qian L, Wu F, Li M, Chen W, Wang H. Decreased frequency of peripheral blood CD8(+)CD25(+)FoxP3(+)regulatory T cells correlates with IL-33 levels in pre-eclampsia. *Hypertens Pregnancy.* 2017; 36: 217-225.
 81. Paeschke S, Chen F, Horn N, et al. Pre-eclampsia is not associated with changes in the levels of regulatory T cells in peripheral blood. *Am J Reprod Immunol.* 2005; 54: 384-389.
 82. Nagayama S, Ohkuchi A, Shirasuna K, et al. The Frequency of Peripheral Blood CD4(+)FoxP3(+) Regulatory T Cells in Women With Pre-eclampsia and Those With High-risk Factors for Pre-eclampsia. *Hypertens Pregnancy.* 2015; 34: 443-455.
 83. Cao W, Wang X, Chen T, et al. The Expression of Notch/Notch Ligand, IL-35, IL-17, and Th17/Treg in Preeclampsia. *Dis Markers.* 2015; 2015: 316182.
 84. Ribeiro VR, Romao-Veiga M, Romagnoli GG, et al. Association between cytokine profile and transcription factors produced by

- T-cell subsets in early- and late-onset pre-eclampsia. *Immunology*. 2017; 152: 163-173.
85. Barnie PA, Lin X, Liu Y, Xu H, Su Z. IL-17 producing innate lymphoid cells 3 (ILC3) but not Th17 cells might be the potential danger factor for preeclampsia and other pregnancy associated diseases. *Int J Clin Exp Pathol*. 2015; 8: 11100-11107.
 86. Cornelius DC, Hogg JP, Scott J, et al. Administration of interleukin-17 soluble receptor C suppresses TH17 cells, oxidative stress, and hypertension in response to placental ischemia during pregnancy. *Hypertension*. 2013; 62: 1068-1073.
 87. Ahn SH, Nguyen SL, Petroff MG. Exploring the Origin and Antigenic Specificity of Maternal Regulatory T Cells in Pregnancy. *Front Immunol*. 2020; 11: 1302.
 88. Hellberg S, Mehta RB, Forsberg A, et al. Maintained thymic output of conventional and regulatory T cells during human pregnancy. *J Allergy Clin Immunol*. 2019; 143: 771-775 e777.
 89. Paolino M, Kogelgruber R, Cronin SJF, et al. RANK links thymic regulatory T cells to fetal loss and gestational diabetes in pregnancy. *Nature*. 2021; 589: 442-447.
 90. Wagner MI, Mai C, Schmitt E, et al. The role of recent thymic emigrant-regulatory T-cell (RTE-Treg) differentiation during pregnancy. *Immunol Cell Biol*. 2015; 93: 858-867.
 91. Wagner MI, Jost M, Spratte J, et al. Differentiation of ICOS+ and ICOS- recent thymic emigrant regulatory T cells (RTE T regs) during normal pregnancy, pre-eclampsia and HELLP syndrome. *Clin Exp Immunol*. 2016; 183: 129-142.
 92. Baecher-Allan C, Wolf E, Hafler DA. MHC class II expression identifies functionally distinct human regulatory T cells. *J Immunol*. 2006; 176: 4622-4631.
 93. Ashley CW, Baecher-Allan C. Cutting Edge: responder T cells regulate human DR+ effector regulatory T cell activity via granzyme B. *J Immunol*. 2009; 183: 4843-4847.
 94. Toldi G, Vasarhelyi ZE, Rigo J, et al. Prevalence of Regulatory T-Cell Subtypes in Preeclampsia. *Am J Reprod Immunol*. 2015; 74: 110-115.
 95. Han X, Ghaemi MS, Ando K, et al. Differential Dynamics of the Maternal Immune System in Healthy Pregnancy and Preeclampsia. *Front Immunol* 2019; 10:1305.
 96. Liao W, Lin JX, Wang L, Li P, Leonard WJ. Modulation of cytokine receptors by IL-2 broadly regulates differentiation into helper T cell lineages. *Nat Immunol*. 2011; 12: 551-559.
 97. Cohen AC, Nadeau KC, Tu W, et al. Cutting edge: decreased accumulation and regulatory function of CD4+ CD25(high) T cells in human STAT5b deficiency. *J Immunol*. 2006; 177: 2770-2774.
 98. Laurence A, Tato CM, Davidson TS, et al. Interleukin-2 signaling via STAT5 constrains T helper 17 cell generation. *Immunity*. 2007; 26: 371-381.
 99. Adler HS, Kubsch S, Graulich E, Ludwig S, Knop J, Steinbrink K. Activation of MAP kinase p38 is critical for the cell-cycle-controlled suppressor function of regulatory T cells. *Blood*. 2007; 109: 4351-4359.
 100. Przybyl L, Ibrahim T, Haase N, et al. Dechend, R. Regulatory T cells ameliorate intrauterine growth retardation in a transgenic rat model for preeclampsia. *Hypertension*. 2015; 65: 1298-1306.
 101. Ibrahim T, Przybyl L, Harmon AC, et al. Proliferation of endogenous regulatory T cells improve the pathophysiology associated with placental ischaemia of pregnancy. *Am J Reprod Immunol*. 2017; 78.
 102. Harmon A, Cornelius D, Amaral L, et al. IL-10 supplementation increases Tregs and decreases hypertension in the RUPP rat model of preeclampsia. *Hypertens Pregnancy*. 2015; 34: 291-306.
 103. Cornelius DC, Amaral LM, Harmon A, Wallace K, Thomas AJ, Campbell N, Scott J, Herse F, Haase N, Moseley J, Wallukat G, Dechend R, LaMarca B. An increased population of regulatory T cells improves the pathophysiology of placental ischemia in a rat model of preeclampsia. *Am J Physiol Regul Integr Comp Physiol*. 2015; 309 (8): R884-R891.
 104. Gomez-Lopez N, Arenas-Hernandez M, Romero R, et al. Regulatory T Cells Play a Role in a Subset of Idiopathic Preterm Labor/Birth and Adverse Neonatal Outcomes. *Cell Rep*. 2020; 32: 107874.
 105. Moore MP, Carter NP, Redman CW. Lymphocyte subsets in normal and pre-eclamptic pregnancies. *Br J Obstet Gynaecol*. 1983; 90: 326-331.
 106. Saito S, Sakai M, Sasaki Y, Tanebe K, Tsuda H, Michimata T. Quantitative analysis of peripheral blood Th0, Th1, Th2 and the Th1:th2 cell ratio during normal human pregnancy and preeclampsia. *Clin Exp Immunol*. 1999; 117: 550-555.
 107. Chaiworapongsa T, Gervasi MT, Refuerzo J, et al. Maternal lymphocyte subpopulations (CD45RA+ and CD45RO+) in preeclampsia. *Am J Obstet Gynecol*. 2002; 187: 889-893.
 108. Molvarec A, Shiozaki A, Ito M, et al. Increased prevalence of peripheral blood granulysin-producing cytotoxic T lymphocytes in preeclampsia. *J Reprod Immunol*. 2011; 91: 56-63.
 109. de Groot CJ, van der Mast BJ, Visser W, De Kuiper P, Weimar W, Van Besouw NM. Preeclampsia is associated with increased cytotoxic T-cell capacity to paternal antigens. *Am J Obstet Gynecol*. 2010; 203: 96 e491-496.
 110. Lok CA, Jebbink J, Nieuwland R, et al. Leukocyte activation and circulating leukocyte-derived microparticles in preeclampsia. *Am J Reprod Immunol*. 2009; 61: 346-359.
 111. von Dadelszen P, Wilkins T, Redman CW. Maternal peripheral blood leukocytes in normal and pre-eclamptic pregnancies. *Br J Obstet Gynaecol*. 1999; 106: 576-581.
 112. Xu Y, Madsen-Bouterse SA, Romero R, et al. Leukocyte pyruvate kinase expression is reduced in normal human pregnancy but not in pre-eclampsia. *Am J Reprod Immunol*. 2010; 64: 137-151.
 113. Wang J, Wen ZQ, Cheng XY, Mei TY, Chen ZF, Su LX. siRNA mediated knockdown of Tbet and RORgammat contributes to decreased inflammation in preeclampsia. *Mol Med Rep*. 2017; 16: 6368-6375.
 114. Bajnok A, Ivanova M, Rigo J Jr, Toldi G. The Distribution of Activation Markers and Selectins on Peripheral T Lymphocytes in Preeclampsia. *Mediators Inflamm*. 2017; 2017: 8045161.
 115. Saito S, Umekage H, Sakamoto Y, et al. Increased T-helper-1-type immunity and decreased T-helper-2-type immunity in patients with preeclampsia. *Am J Reprod Immunol*. 1999; 41: 297-306.
 116. Darmochwal-Kolarz D, Kolarz B, Surdacka A, Rolinski J, Leszczynska-Gorzalak B, Oleszczuk J. The expression and concentration of CD40 ligand in normal pregnancy and pre-eclampsia. *J Reprod Immunol*. 2009; 79: 215-219.
 117. Cornelius DC, Castillo J, Porter J, et al. Blockade of CD40 ligand for intercellular communication reduces hypertension, placental oxidative stress, and AT1-AA in response to adoptive transfer of CD4+ T lymphocytes from RUPP rats. *Am J Physiol Regul Integr Comp Physiol*. 2015; 309: R1243-1250.
 118. Zenclussen AC, Fest S, Joachim R, Klapp BF, Arck PC. Introducing a mouse model for pre-eclampsia: adoptive transfer of activated Th1 cells leads to pre-eclampsia-like symptoms exclusively in pregnant mice. *Eur J Immunol*. 2004; 34: 377-387.
 119. Schmid M, Sollwedel A, Thuere C, et al. Murine pre-eclampsia induced by unspecific activation of the immune system correlates with alterations in the eNOS and AT1 receptor expression in the kidneys and placenta. *Placenta*. 2007; 28: 688-700.
 120. Hayakawa S, Fujikawa T, Fukuoka H, et al. Sakurai, I. Murine fetal resorption and experimental pre-eclampsia are induced by both excessive Th1 and Th2 activation. *J Reprod Immunol*. 2000; 47: 121-138.
 121. Birkeland SA, Kristofferson K. Pre-eclampsia—a state of mother-fetus immune imbalance. *Lancet*. 1979; 2: 720-723.
 122. Siklos P, Nemeth-Csoka A, Bartalits L, et al. Decreased killer cell activity in preeclampsia. *Gynecol Obstet Invest*. 1987; 23: 84-88.

123. Kieffer TEC, Scherjon SA, Faas MM, Prins JR. Lower activation of CD4(+) memory T cells in preeclampsia compared to healthy pregnancies persists postpartum. *J Reprod Immunol.* 2019; 136: 102613.
124. Hsu P, Santner-Nanan B, Joung S, Peek MJ, Nanan R. Expansion of CD4(+) HLA-G(+) T Cell in human pregnancy is impaired in preeclampsia. *Am J Reprod Immunol.* 2014; 71: 217-228.
125. Jacobsen DP, Lekva T, Moe K, Fjeldstad HES, Johnsen GM, Sugulle M, Staff, A. C. Pregnancy and postpartum levels of circulating maternal sHLA-G in preeclampsia. *J Reprod Immunol.* 2021; 143: 103249.
126. Ellis SA, Sargent IL, Redman CW, McMichael AJ. Evidence for a novel HLA antigen found on human extravillous trophoblast and a chorio-carcinoma cell line. *Immunology.* 1986; 59: 595-601.
127. Lombardelli L, Aguerre-Girr M, Logiodice F, et al. HLA-G5 induces IL-4 secretion critical for successful pregnancy through differential expression of ILT2 receptor on decidual CD4(+) T cells and macrophages. *J Immunol.* 2013; 191: 3651-3662.
128. Du MR, Guo PF, Piao HL, et al. Embryonic trophoblasts induce decidual regulatory T cell differentiation and maternal-fetal tolerance through thymic stromal lymphopoietin instructing dendritic cells. *J Immunol.* 2014; 192: 1502-1511.
129. Huang YH, Zozulya AL, Weidenfeller C, Schwab N, Wiendl H. T cell suppression by naturally occurring HLA-G-expressing regulatory CD4+ T cells is IL-10-dependent and reversible. *J Leukoc Biol.* 2009; 86: 273-281.
130. Amodio G, Mugione A, Sanchez AM, et al. HLA-G expressing DC-10 and CD4(+) T cells accumulate in human decidua during pregnancy. *Hum Immunol.* 2013; 74: 406-411.
131. Gaugas JM, Jones E, Curzen P. Spontaneous lymphocyte transformation in pregnancies complicated by pre-eclampsia. *Am J Obstet Gynecol.* 1975; 121: 542-544.
132. Sridama V, Yang SL, Moawad A, DeGroot LJ. T-cell subsets in patients with preeclampsia. *Am J Obstet Gynecol.* 1983; 147: 566-569.
133. Borzychowski AM, Croy BA, Chan WL, Redman CW, Sargent IL. Changes in systemic type 1 and type 2 immunity in normal pregnancy and pre-eclampsia may be mediated by natural killer cells. *Eur J Immunol.* 2005; 35: 3054-3063.
134. Faas MM, Schuiling GA, Linton EA, Sargent IL, Redman CW. Activation of peripheral leukocytes in rat pregnancy and experimental preeclampsia. *Am J Obstet Gynecol.* 2000; 182: 351-357.
135. Rieger L, Segerer S, Bernar T, et al. Specific subsets of immune cells in human decidua differ between normal pregnancy and preeclampsia—a prospective observational study. *Reprod Biol Endocrinol.* 2009; 7: 132.
136. Williams PJ, Bulmer JN, Searle RF, Innes BA, Robson SC. Altered decidual leucocyte populations in the placental bed in pre-eclampsia and foetal growth restriction: a comparison with late normal pregnancy. *Reproduction.* 2009; 138: 177-184.
137. Stallmach T, Hebisch G, Orban P, Lu X. Aberrant positioning of trophoblast and lymphocytes in the fetomaternal interface with preeclampsia. *Virchows Arch.* 1999; 434: 207-211.
138. Wilczynski JR, Tchorzewski H, Banasik M, et al. Lymphocyte subset distribution and cytokine secretion in third trimester decidua in normal pregnancy and preeclampsia. *Eur J Obstet Gynecol Reprod Biol.* 2003; 109: 8-15.
139. Milosevic-Stevanovic J, Krstic M, Stefanovic M, et al. T lymphocytes in the third trimester decidua in preeclampsia. *Hypertens Pregnancy.* 2019; 38: 52-57.
140. Lager S, Sovio U, Eddershaw E, et al. Abnormal placental CD8(+) T-cell infiltration is a feature of fetal growth restriction and preeclampsia. *J Physiol.* 2020.
141. Kieffer TEC, Laskewitz A, Vledder A, Scherjon SA, Faas MM, Prins JR. Decidual memory T-cell subsets and memory T-cell stimulatory cytokines in early- and late-onset preeclampsia. *Am J Reprod Immunol.* 2020; e13293.
142. Morita K, Tsuda S, Kobayashi E, et al. Analysis of TCR Repertoire and PD-1 Expression in Decidual and Peripheral CD8(+) T Cells Reveals Distinct Immune Mechanisms in Miscarriage and Preeclampsia. *Front Immunol.* 2020; 11: 1082.
143. Barton BM, Xu R, Wherry EJ, Porrett PM. Pregnancy promotes tolerance to future offspring by programming selective dysfunction in long-lived maternal T cells. *J Leukoc Biol.* 2017; 101: 975-987.
144. Johnsen GM, Stovold GL, Alnaes-Katjavivi PH, et al. Lymphocyte characterization of decidua basalis spiral arteries with acute atherosclerosis in preeclamptic and normotensive pregnancies. *J Reprod Immunol.* 2019; 132: 42-48.
145. Chien YH, Meyer C, Bonneville M. gammadelta T cells: first line of defense and beyond. *Annu Rev Immunol.* 2014; 32: 121-155.
146. Kranz DM, Saito H, Disteché CM, et al. Chromosomal locations of the murine T-cell receptor alpha-chain gene and the T-cell gamma gene. *Science.* 1985; 227: 941-945.
147. Lew AM, Pardoll DM, Maloy WL, et al. Characterization of T cell receptor gamma chain expression in a subset of murine thymocytes. *Science.* 1986; 234: 1401-1405.
148. Morath A, Schamel WW. alphabeta and gammadelta T cell receptors: similar but different. *J Leukoc Biol.* 2020; 107: 1045-1055.
149. Beetz S, Wesch D, Marischen L, Welte S, Oberg HH, Kabelitz D. Innate immune functions of human gammadelta T cells. *Immunobiology.* 2008; 213: 173-182.
150. Miko E, Szereday L, Barakonyi A, Jarkovich A, Varga P, Szekeres-Bartho J. Immunoactivation in preeclampsia: vdelta2+ and regulatory T cells during the inflammatory stage of disease. *J Reprod Immunol.* 2009; 80: 100-108.
151. Chatterjee P, Chiasson VL, Seerangan G, et al. Depletion of MHC class II invariant chain peptide or gamma-delta T-cells ameliorates experimental preeclampsia. *Clin Sci (Lond).* 2017; 131: 2047-2058.
152. Duan B, Morel L. Role of B-1a cells in autoimmunity. *Autoimmun Rev.* 2006; 5: 403-408.
153. Wallukat G, Homuth V, Fischer T, et al. Patients with preeclampsia develop agonistic autoantibodies against the angiotensin AT1 receptor. *J Clin Invest.* 1999; 103: 945-952.
154. Gusdon JP Jr, Heise ER, Herbst GA. Studies of lymphocyte populations in pre-eclampsia-eclampsia. *Am J Obstet Gynecol.* 1977; 129: 255-259.
155. Liao AH, Liu LP, Ding WP, Zhang L. Functional changes of human peripheral B-lymphocytes in pre-eclampsia. *Am J Reprod Immunol.* 2009; 61: 313-321.
156. Jensen F, Wallukat G, Herse F, et al. Zenclussen, A. C. CD19+CD5+ cells as indicators of preeclampsia. *Hypertension.* 2012; 59: 861-868.
157. Zeng B, Kwak-Kim J, Liu Y, Liao AH. Treg cells are negatively correlated with increased memory B cells in pre-eclampsia while maintaining suppressive function on autologous B-cell proliferation. *Am J Reprod Immunol.* 2013; 70: 454-463.
158. Muzzio DO, Soldati R, Rolle L, Zygmunt M, Zenclussen AC, Jensen F. B-1a B cells regulate T cell differentiation associated with pregnancy disturbances. *Front Immunol.* 2014; 5: 6.
159. LaMarca B, Wallace K, Herse F, et al. Hypertension in response to placental ischemia during pregnancy: role of B lymphocytes. *Hypertension.* 2011; 57: 865-871.
160. Zhang Q, Huang Y, Zhang K, et al. Cadmium-induced immune abnormality is a key pathogenic event in human and rat models of preeclampsia. *Environ Pollut.* 2016; 218: 770-782.
161. Zhang Q, Huang Y, Zhang K, et al. Progesterone attenuates hypertension and autoantibody levels to the angiotensin II type 1 receptor in response to elevated cadmium during pregnancy. *Placenta.* 2018; 62: 16-24.
162. Laule CF, Odean EJ, Wing CR, et al. Role of B1 and B2 lymphocytes in placental ischemia-induced hypertension. *Am J Physiol Heart Circ Physiol.* 2019; 317: H732.

163. Dhillon P, Wallace K, Herse F, et al. -17-mediated oxidative stress is an important stimulator of AT1-AA and hypertension during pregnancy. *Am J Physiol Regul Integr Comp Physiol.* 2012; 303: R353-358.
164. Madhur MS, Lob HE, McCann LA, et al. Interleukin 17 promotes angiotensin II-induced hypertension and vascular dysfunction. *Hypertension.* 2010; 55: 500-507.
165. Wang Y, Sugita N, Kikuchi A, et al. FcγRIIB-nt645+25A/G gene polymorphism and periodontitis in Japanese women with preeclampsia. *Int J Immunogenet.* 2012; 39: 492-500.
166. Verbeek JS, Hirose S, Nishimura H. The Complex Association of FcγRIIb With Autoimmune Susceptibility. *Front Immunol.* 2019; 10: 2061.
167. Teige I, Martensson L, Frendeus BL. Targeting the Antibody Checkpoints to Enhance Cancer Immunotherapy-Focus on FcγRIIb. *Front Immunol.* 2019; 10: 481.
168. Bulmer JN, Morrison L, Longfellow M, Ritson A, Pace D. Granulated lymphocytes in human endometrium: histochemical and immunohistochemical studies. *Hum Reprod.* 1991; 6: 791-798.
169. Moffett-King A. Natural killer cells and pregnancy. *Nat Rev Immunol.* 2002; 2: 656-663.
170. Moffett A, Colucci F. Uterine NK cells: active regulators at the maternal-fetal interface. *J Clin Invest.* 2014; 124: 1872-1879.
171. Rätsep MT, Felker AM, Kay VR, Toluoso L, Hofmann AP, Croy BA. Uterine natural killer cells: supervisors of vasculature construction in early decidua basalis. *Reproduction.* 2015; 149: R91-102.
172. Bachmayer N, Rafik Hamad R, Liszka L, Bremme K, Sverremark-Ekström E. Aberrant uterine natural killer (NK)-cell expression and altered placental and serum levels of the NK-cell promoting cytokine interleukin-12 in pre-eclampsia. *Am J Reprod Immunol.* 2006; 56: 292-301.
173. Zhang J, Dunk CE, Shynlova O, Caniggia I, Lye SJ. TGFβ1 suppresses the activation of distinct dNK subpopulations in preeclampsia. *EBioMedicine.* 2019; 39: 531-539.
174. Du M, Wang W, Huang L, et al. Natural killer cells in the pathogenesis of preeclampsia: a double-edged sword. *J Matern Fetal Neonatal Med.* 2020: 1-8.
175. Lockwood CJ, Huang SJ, Chen CP, et al. Decidual cell regulation of natural killer cell-recruiting chemokines: implications for the pathogenesis and prediction of preeclampsia. *Am J Pathol.* 2013; 183: 841-856.
176. Milosevic-Stevanovic J, Krstic M, Radovic-Janosevic D, Popovic J, Tasic M, Stojnev S. Number of decidual natural killer cells & macrophages in pre-eclampsia. *Indian J Med Res.* 2016; 144: 823-830.
177. Rabaglino MB, Post Uiterweer ED, Jeyabalan A, Hogge WA, Conrad KP. Bioinformatics approach reveals evidence for impaired endometrial maturation before and during early pregnancy in women who developed preeclampsia. *Hypertension.* 2015; 65: 421-429.
178. Darmochwal-Kolarz D, Rolinski J, Leszczynska-Gorzela B, Oleszczuk J. Fas antigen expression on the decidual lymphocytes of pre-eclamptic patients. *Am J Reprod Immunol.* 2000; 43: 197-201.
179. Hiby SE, Apps R, Sharkey AM, et al. Maternal activating KIRs protect against human reproductive failure mediated by fetal HLA-C2. *J Clin Invest.* 2010; 120: 4102-4110.
180. Johnsen GM, Storvold GL, Drabbels JJM, et al. Staff, A. C. The combination of maternal KIR-B and fetal HLA-C2 is associated with decidua basalis acute atherosclerosis in pregnancies with preeclampsia. *J Reprod Immunol.* 2018; 129: 23-29.
181. Huhn O, Chazara O, Ivarsson MA, et al. High-Resolution Genetic and Phenotypic Analysis of KIR2DL1 Alleles and Their Association with Pre-Eclampsia. *J Immunol.* 2018; 201: 2593-2601.
182. Colonna M, Navarro F, Bellon T, et al. A common inhibitory receptor for major histocompatibility complex class I molecules on human lymphoid and myelomonocytic cells. *J Exp Med.* 1997; 186: 1809-1818.
183. Wedenoja S, Yoshihara M, Teder H, et al. Fetal HLA-G mediated immune tolerance and interferon response in preeclampsia. *EBioMedicine.* 2020; 59: 102872.
184. Nishizawa A, Kumada K, Tateno K, et al. Analysis of HLA-G long-read genomic sequences in mother-offspring pairs with preeclampsia. *Sci Rep.* 2020; 10: 20027.
185. Ito M, Nishizawa H, Tsutsumi M, et al. Potential role for nectin-4 in the pathogenesis of pre-eclampsia: a molecular genetic study. *BMC Med Genet.* 2018; 19: 166.
186. Tayade C, Hilchie D, He H, et al. Genetic deletion of placenta growth factor in mice alters uterine NK cells. *J Immunol.* 2007; 178: 4267-4275.
187. Leplina O, Smetanenko E, Tikhonova M, et al. Binding of the placental growth factor to VEGF receptor type 1 modulates human T cell functions. *J Leukoc Biol.* 2020.
188. Linzke N, Schumacher A, Woidacki K, Croy BA, Zenclussen AC. Carbon monoxide promotes proliferation of uterine natural killer cells and remodeling of spiral arteries in pregnant hypertensive heme oxygenase-1 mutant mice. *Hypertension.* 2014; 63: 580-588.
189. Kasai M, Iwamori M, Nagai Y, Okumura K, Tada T. A glycolipid on the surface of mouse natural killer cells. *Eur J Immunol.* 1980; 10: 175-180.
190. Young WW Jr, Hakomori SI, Durdik JM, Henney CS. Identification of ganglio-N-tetraosylceramide as a new cell surface marker for murine natural killer (NK) cells. *J Immunol.* 1980; 124: 199-201.
191. Kasai M, Yoneda T, Habu S, Maruyama Y, Okumura K, Tokunaga T. In vivo effect of anti-asialo GM1 antibody on natural killer activity. *Nature.* 1981; 291: 334-335.
192. Croy BA. Hasn't the time come to replace the term metrial gland?. *J Reprod Immunol.* 1999; 42: 127-129.discussion 131-124.
193. Golic M, Haase N, Herse F, et al. Natural Killer Cell Reduction and Uteroplacental Vasculopathy. *Hypertension.* 2016; 68: 964-973.
194. Elfarra J, Amaral LM, McCalmon M, et al. Natural killer cells mediate pathophysiology in response to reduced uterine perfusion pressure. *Clin Sci (Lond).* 2017; 131: 2753-2762.
195. Vaka VR, McMaster KM, Cornelius DC, et al. Natural killer cells contribute to mitochondrial dysfunction in response to placental ischemia in reduced uterine perfusion pressure rats. *Am J Physiol Regul Integr Comp Physiol.* 2019; 316: R441-R447.
196. Bohlender J, Ganten D, Luft FC. Rats transgenic for human renin and human angiotensinogen as a model for gestational hypertension. *J Am Soc Nephrol.* 2000; 11: 2056-2061.
197. Dechend R, Gratzke P, Wallukat G, et al. Agonistic autoantibodies to the AT1 receptor in a transgenic rat model of preeclampsia. *Hypertension.* 2005; 45: 742-746.
198. Verlohren S, Niehoff M, Hering L, et al. Uterine vascular function in a transgenic preeclampsia rat model. *Hypertension.* 2008; 51: 547-553.
199. Hering L, Herse F, Geusens N, et al. Effects of circulating and local uteroplacental angiotensin II in rat pregnancy. *Hypertension.* 2010; 56: 311-318.
200. Toder V, Blank M, Gleicher N, Voljovich I, Mashiah S, Nebel L. Activity of natural killer cells in normal pregnancy and edema-proteinuria-hypertension gestosis. *Am J Obstet Gynecol.* 1983; 145: 7-10.
201. Minagawa M, Narita J, Tada T, et al. Mechanisms underlying immunologic states during pregnancy: possible association of the sympathetic nervous system. *Cell Immunol.* 1999; 196: 1-13.
202. Vinnars MT, Bjork E, Nagaev I, et al. Enhanced Th1 and inflammatory mRNA responses upregulate NK cell cytotoxicity and NKG2D ligand expression in human pre-eclamptic placenta and target it for NK cell attack. *Am J Reprod Immunol.* 2018; 80: e12969.
203. Alanen A, Lassila O. Deficient natural killer cell function in preeclampsia. *Obstet Gynecol.* 1982; 60: 631-634.
204. Hill JA, Hsia S, Doran DM, Bryans CI. Natural killer cell activity and antibody dependent cell-mediated cytotoxicity in preeclampsia. *J Reprod Immunol.* 1986; 9: 205-212.

205. Lagana AS, Giordano D, Loddo S, et al. Decreased Endothelial Progenitor Cells (EPCs) and increased Natural Killer (NK) cells in peripheral blood as possible early markers of preeclampsia: a case-control analysis. *Arch Gynecol Obstet.* 2017; 295: 867-872.
206. Brien ME, Boufaied I, Soglio DD, Rey E, Leduc L, Girard S. Distinct inflammatory profile in preeclampsia and postpartum preeclampsia reveal unique mechanisms. *Biol Reprod.* 2019; 100: 187-194.
207. Seamon K, Kurlak LO, Warthan M, et al. The Differential Expression of ERAP1/ERAP2 and Immune Cell Activation in Pre-eclampsia. *Front Immunol.* 2020; 11: 396.
208. Darmochwal-Kolarz D, Rolinski J, Leszczynska-Goarzelak B, Oleszczuk J. The expressions of intracellular cytokines in the lymphocytes of preeclamptic patients. *Am J Reprod Immunol.* 2002; 48: 381-386.
209. van Nieuwenhoven AL, Moes H, Heineman MJ, Santema J, Faas MM. Cytokine production by monocytes, NK cells, and lymphocytes is different in preeclamptic patients as compared with normal pregnant women. *Hypertens Pregnancy.* 2008; 27: 207-224.
210. Bachmayer N, Sohlberg E, Sundstrom Y, et al. Women with preeclampsia have an altered NKG2A and NKG2C receptor expression on peripheral blood natural killer cells. *Am J Reprod Immunol.* 2009; 62: 147-157.
211. Bueno-Sanchez JC, Agudelo-Jaramillo B, Escobar-Aguilerae LF, et al. Cytokine production by non-stimulated peripheral blood NK cells and lymphocytes in early-onset severe pre-eclampsia without HELLP. *J Reprod Immunol.* 2013; 97: 223-231.
212. Molvarec A, Ito M, Shima T, et al. Decreased proportion of peripheral blood vascular endothelial growth factor-expressing T and natural killer cells in preeclampsia. *Am J Obstet Gynecol.* 2010; 203: 567 e561-568.
213. Molvarec A, Blois SM, Stenczer B, et al. Peripheral blood galectin-1-expressing T and natural killer cells in normal pregnancy and preeclampsia. *Clin Immunol.* 2011; 139: 48-56.
214. O'Brien TJ, Hardin JW, Bannon GA, Norris JS, Quirk JG. CA 125 antigen in human amniotic fluid and fetal membranes. *Am J Obstet Gynecol.* 1986; 155: 50-55.
215. Quirk JG Jr, Brunson GL, Long CA, Bannon GA, Sanders MM, O'Brien TJ. CA 125 in tissues and amniotic fluid during pregnancy. *Am J Obstet Gynecol.* 1988; 159: 644-649.
216. Tyler C, Kapur A, Felder M, et al. The mucin MUC16 (CA125) binds to NK cells and monocytes from peripheral blood of women with healthy pregnancy and preeclampsia. *Am J Reprod Immunol.* 2012; 68: 28-37.
217. Cottrell JN, Amaral LM, Harmon A, et al. Interleukin-4 supplementation improves the pathophysiology of hypertension in response to placental ischemia in RUPP rats. *Am J Physiol Regul Integr Comp Physiol.* 2019; 316: R165-R171.
218. Elfarrar JT, Cottrell JN, Cornelius DC, et al. 17-Hydroxyprogesterone caproate improves T cells and NK cells in response to placental ischemia; new mechanisms of action for an old drug. *Pregnancy Hypertens.* 2020; 19: 226-232.
219. Shields CA, McCalmon M, Ibrahim T, et al. Placental ischemia-stimulated T-helper 17 cells induce preeclampsia-associated cytolytic natural killer cells during pregnancy. *Am J Physiol Regul Integr Comp Physiol.* 2018; 315: R336-R343.
220. Ratsep MT, Felker AM, Kay VR, Toluoso L, Hofmann AP, Croy BA. Uterine natural killer cells: supervisors of vasculature construction in early decidua basalis. *Reproduction.* 2015; 149: R91-102.
221. Ashkar AA, Di Santo JP, Croy BA. Interferon gamma contributes to initiation of uterine vascular modification, decidual integrity, and uterine natural killer cell maturation during normal murine pregnancy. *J Exp Med.* 2000; 192: 259-270.
222. Ashkar AA, Croy BA. Functions of uterine natural killer cells are mediated by interferon gamma production during murine pregnancy. *Semin Immunol.* 2001; 13: 235-241.
223. Burke SD, Barrette VF, Bianco J, et al. Spiral arterial remodeling is not essential for normal blood pressure regulation in pregnant mice. *Hypertension.* 2010; 55: 729-737.
224. Wallace AE, Whitley GS, Thilaganathan B, Cartwright JE. Decidual natural killer cell receptor expression is altered in pregnancies with impaired vascular remodeling and a higher risk of pre-eclampsia. *J Leukoc Biol.* 2015; 97: 79-86.
225. Makino Y, Kanno R, Ito T, Higashino K, Taniguchi M. Predominant expression of invariant V alpha 14+ TCR alpha chain in NK1.1+ T cell populations. *Int Immunol.* 1995; 7: 1157-1161.
226. Salio M, Silk JD, Jones EY, Cerundolo V. Biology of CD1- and MR1-restricted T cells. *Annu Rev Immunol.* 2014; 32: 323-366.
227. Boyson JE, Nagarkatti N, Nizam L, Exley MA, Strominger JL. Gestation stage-dependent mechanisms of invariant natural killer T cell-mediated pregnancy loss. *Proc Natl Acad Sci U S A.* 2006; 103: 4580-4585.
228. St Louis D, Romero R, Plazayo O, et al. Invariant NKT Cell Activation Induces Late Preterm Birth That Is Attenuated by Rosiglitazone. *J Immunol.* 2016; 196: 1044-1059.
229. Gomez-Lopez N, Romero R, Arenas-Hernandez M, et al. In vivo activation of invariant natural killer T cells induces systemic and local alterations in T-cell subsets prior to preterm birth. *Clin Exp Immunol.* 2017; 189: 211-225.
230. Negishi Y, Shima Y, Takeshita T, Takahashi H. Distribution of invariant natural killer T cells and dendritic cells in late pre-term birth without acute chorioamnionitis. *Am J Reprod Immunol.* 2017; 77.
231. Miko E, Szereday L, Barakonyi A, Jarkovich A, Varga P, Szekeres-Bartho J. The role of invariant NKT cells in pre-eclampsia. *Am J Reprod Immunol.* 2008; 60: 118-126.
232. Southcombe J, Redman C, Sargent I. Peripheral blood invariant natural killer T cells throughout pregnancy and in preeclamptic women. *J Reprod Immunol.* 2010; 87: 52-59.
233. Waisman A, Lukas D, Clausen BE, Yogev N. Dendritic cells as gatekeepers of tolerance. *Semin Immunopathol.* 2017; 39: 153-163.
234. Moldenhauer LM, Diener KR, Thring DM, Brown MP, Hayball JD, Robertson SA. Cross-presentation of male seminal fluid antigens elicits T cell activation to initiate the female immune response to pregnancy. *J Immunol.* 2009; 182: 8080-8093.
235. Darmochwal-Kolarz D, Rolinski J, Tabarkiewicz J, et al. Myeloid and lymphoid dendritic cells in normal pregnancy and pre-eclampsia. *Clin Exp Immunol.* 2003; 132: 339-344.
236. Wang J, Tao YM, Cheng XY, et al. Vascular endothelial growth factor affects dendritic cell activity in hypertensive disorders of pregnancy. *Mol Med Rep.* 2015; 12: 3781-3786.
237. Panda B, Panda A, Ueda I, et al. Dendritic cells in the circulation of women with preeclampsia demonstrate a pro-inflammatory bias secondary to dysregulation of TLR receptors. *J Reprod Immunol.* 2012; 94: 210-215.
238. Darmochwal-Kolarz DA, Kludka-Sternik M, Chmielewski T, et al. The expressions of CD200 and CD200R molecules on myeloid and lymphoid dendritic cells in pre-eclampsia and normal pregnancy. *Am J Reprod Immunol.* 2012; 67: 474-481.
239. Darmochwal-Kolarz D, Kludka-Sternik M, Kolarz B, et al. The expression of B7-H1 and B7-H4 co-stimulatory molecules on myeloid and plasmacytoid dendritic cells in pre-eclampsia and normal pregnancy. *J Reprod Immunol.* 2013; 99: 33-38.
240. Chatterjee P, Chiasson VL, Seerangan G, et al. Cotreatment with interleukin 4 and interleukin 10 modulates immune cells and prevents hypertension in pregnant mice. *Am J Hypertens.* 2015; 28: 135-142.
241. Gierman LM, Silva GB, Pervaiz Z, et al. Iversen, A. C. TLR3 expression by maternal and fetal cells at the maternal-fetal interface in normal and preeclamptic pregnancies. *J Leukoc Biol.* 2020.
242. Scroggins SM, Santillan DA, Lund JM, et al. Elevated vasopressin in pregnant mice induces T-helper subset alterations consistent with human preeclampsia. *Clin Sci (Lond).* 2018; 132: 419-436.

243. Huang SJ, Chen CP, Schatz F, Rahman M, Abrahams VM, Lockwood CJ. Pre-eclampsia is associated with dendritic cell recruitment into the uterine decidua. *J Pathol*. 2008; 214: 328-336.
244. Li M, Wu ZM, Yang H, Huang SJ. NF κ B and JNK/MAPK activation mediates the production of major macrophage- or dendritic cell-recruiting chemokine in human first trimester decidua cells in response to proinflammatory stimuli. *J Clin Endocrinol Metab*. 2011; 96: 2502-2511.
245. Huang SJ, Zenclussen AC, Chen CP, et al. The implication of aberrant GM-CSF expression in decidual cells in the pathogenesis of preeclampsia. *Am J Pathol*. 2010; 177: 2472-2482.
246. Dunk C, Kwan M, Hazan A, et al. Failure of Decidualization and Maternal Immune Tolerance Underlies Uterovascular Resistance in Intra Uterine Growth Restriction. *Front Endocrinol (Lausanne)*. 2019; 10: 160.
247. Wang P, Xue Y, Han Y, et al. The STAT3-binding long noncoding RNA lnc-DC controls human dendritic cell differentiation. *Science*. 2014; 344: 310-313.
248. Zhang W, Zhou Y, Ding Y. lnc-DC mediates the over-maturation of decidual dendritic cells and induces the increase in Th1 cells in preeclampsia. *Am J Reprod Immunol*. 2017; 77.
249. Zhang W, Yang M, Yu L, et al. Long non-coding RNA lnc-DC in dendritic cells regulates trophoblast invasion via p-STAT3-mediated TIMP/MMP expression. *Am J Reprod Immunol*. 2020; 83: e13239.
250. Gervasi MT, Chaiworapongsa T, Pacora P, et al. Phenotypic and metabolic characteristics of monocytes and granulocytes in preeclampsia. *Am J Obstet Gynecol*. 2001; 185: 792-797.
251. Massobrio M, Benedetto C, Bertini E, Tetta C, Camussi G. Immune complexes in preeclampsia and normal pregnancy. *Am J Obstet Gynecol*. 1985; 152: 578-583.
252. Greer IA, Haddad NG, Dawes J, Johnstone FD, Calder AA. Neutrophil activation in pregnancy-induced hypertension. *Br J Obstet Gynaecol*. 1989; 96: 978-982.
253. Greer IA, Dawes J, Johnston TA, Calder AA. Neutrophil activation is confined to the maternal circulation in pregnancy-induced hypertension. *Obstet Gynecol*. 1991; 78: 28-32.
254. Haeger M, Unander M, Norder-Hansson B, Tylman M, Bengtsson A. Complement, neutrophil, and macrophage activation in women with severe preeclampsia and the syndrome of hemolysis, elevated liver enzymes, and low platelet count. *Obstet Gynecol*. 1992; 79: 19-26.
255. Anim-Nyame N, Gamble J, Sooranna SR, Johnson MR, Sullivan MH, Steer PJ. Evidence of impaired microvascular function in preeclampsia: a non-invasive study. *Clin Sci (Lond)*. 2003; 104: 405-412.
256. Barden A, Ritchie J, Walters B, et al. Study of plasma factors associated with neutrophil activation and lipid peroxidation in preeclampsia. *Hypertension*. 2001; 38: 803-808.
257. Canzonieri BJ, Lewis DF, Groome L, Wang Y. Increased neutrophil numbers account for leukocytosis in women with preeclampsia. *Am J Perinatol*. 2009; 26: 729-732.
258. Oylumlu M, Ozler A, Yildiz A, et al. New inflammatory markers in preeclampsia: echocardiographic epicardial fat thickness and neutrophil to lymphocyte ratio. *Clin Exp Hypertens*. 2014; 36: 503-507.
259. von Dadelszen P, Watson RW, Noorwali F, et al. Maternal neutrophil apoptosis in normal pregnancy, preeclampsia, and normotensive intrauterine growth restriction. *Am J Obstet Gynecol*. 1999; 181: 408-414.
260. Shah TJ, Walsh SW. Activation of NF-kappaB and expression of COX-2 in association with neutrophil infiltration in systemic vascular tissue of women with preeclampsia. *Am J Obstet Gynecol*. 2007; 196.
261. Cadden KA, Walsh SW. Neutrophils, but not lymphocytes or monocytes, infiltrate maternal systemic vasculature in women with preeclampsia. *Hypertens Pregnancy*. 2008; 27: 396-405.
262. Sacks GP, Studena K, Sargent K, Redman CW. Normal pregnancy and preeclampsia both produce inflammatory changes in peripheral blood leukocytes akin to those of sepsis. *Am J Obstet Gynecol*. 1998; 179: 80-86.
263. Sabatier F, Bretelle F, D'Ercole C, Boubli L, Sampol J, Dignat-George F. Neutrophil activation in preeclampsia and isolated intrauterine growth restriction. *Am J Obstet Gynecol*. 2000; 183: 1558-1563.
264. Luppi P, Tse H, Lain KY, Markovic N, Piganelli JD, DeLoia JA. Preeclampsia activates circulating immune cells with engagement of the NF-kappaB pathway. *Am J Reprod Immunol*. 2006; 56: 135-144.
265. Lv J, Zhang X, Wang C, Wang H, Wang T, Qian Z. Hydrogen peroxide promotes the activation of preeclampsia peripheral T cells. *Innate Immun*. 2018; 24: 203-209.
266. Walsh SW, Nugent WH, Dulaimi AI, M Washington, S. L., Dacha P, Strauss JF. 3rd Proteases Activate Pregnancy Neutrophils by a Protease-Activated Receptor 1 Pathway: epigenetic Implications for Preeclampsia. *Reprod Sci*. 2020; 27: 2115-2127.
267. Nitsche JF, Jiang SW, Brost BC. Maternal neutrophil toll-like receptor mRNA expression is down-regulated in preeclampsia. *Am J Reprod Immunol*. 2011; 66: 242-248.
268. Xie F, von Dadelszen P, Nadeau J. CMV infection, TLR-2 and -4 expression, and cytokine profiles in early-onset preeclampsia with HELLP syndrome. *Am J Reprod Immunol*. 2014; 71: 379-386.
269. Wang Y, Adair CD, Weeks JW, Lewis DF, Alexander JS. Increased neutrophil-endothelial adhesion induced by placental factors is mediated by platelet-activating factor in preeclampsia. *J Soc Gynecol Investig*. 1999; 6: 136-141.
270. Aly AS, Khandelwal M, Zhao J, Mehmet AH, Sammel MD, Parry S. Neutrophils are stimulated by syncytiotrophoblast microvillous membranes to generate superoxide radicals in women with preeclampsia. *Am J Obstet Gynecol*. 2004; 190: 252-258.
271. Hu Y, Li H, Yan R, et al. Increased Neutrophil Activation and Plasma DNA Levels in Patients with Pre-Eclampsia. *Thromb Haemost*. 2018; 118: 2064-2073.
272. Walsh SW, Nugent WH, Dulaimi AI, M Washington, S. L., Dacha P, Strauss JF. 3rd Proteases Activate Pregnancy Neutrophils by a Protease-Activated Receptor 1 Pathway: epigenetic Implications for Preeclampsia. *Reprod Sci*. 2020.
273. Zusterzeel PL, Wanten GJ, Peters WH, Merkus HM, Steegers EA. Neutrophil oxygen radical production in pre-eclampsia with HELLP syndrome. *Eur J Obstet Gynecol Reprod Biol*. 2001; 99: 213-218.
274. Lampe R, Szucs S, Ormos M, Adany R, Poka R. Effect of normal and preeclamptic plasma on superoxide-anion production of neutrophils from healthy non-pregnant women. *J Reprod Immunol*. 2008; 79: 63-69.
275. Krysiak O, Bretschneider A, Zhong E, et al. Soluble vascular endothelial growth factor receptor-1 (sFLT-1) mediates downregulation of FLT-1 and prevents activated neutrophils from women with preeclampsia from additional migration by VEGF. *Circ Res*. 2005; 97: 1253-1261.
276. Marques FK, Campos FM, Filho OA, Carvalho AT, Dusse LM, Gomes KB. Circulating microparticles in severe preeclampsia. *Clin Chim Acta*. 2012; 414: 253-258.
277. Mikhailova VA, Ovchinnikova OM, Zainulina MS, Sokolov DI, Sel'kov SA. Detection of microparticles of leukocytic origin in the peripheral blood in normal pregnancy and preeclampsia. *Bull Exp Biol Med*. 2014; 157: 751-756.
278. Lampe R, Kover A, Szucs S, et al. Phagocytic index of neutrophil granulocytes and monocytes in healthy and preeclamptic pregnancy. *J Reprod Immunol*. 2015; 107: 26-30.
279. Lampe R, Kover A, Szucs S, Pal L, Arnyas E, Poka R. The effect of healthy pregnant plasma and preeclamptic plasma on the phagocytosis index of neutrophil granulocytes and monocytes of nonpregnant women. *Hypertens Pregnancy*. 2017; 36: 59-63.
280. Mellembakken JR, Aukrust P, Olafsen MK, Ueland T, Hestdal K, Videm V. Activation of leukocytes during the uteroplacental passage in preeclampsia. *Hypertension*. 2002; 39: 155-160.
281. Wang Y, Gu Y, Philibert L, Lucas MJ. Neutrophil activation induced by placental factors in normal and pre-eclamptic pregnancies in vitro. *Placenta*. 2001; 22: 560-565.

282. Leavey K, Grynspan D, Cox BJ. Both "canonical" and "immunological" preeclampsia subtypes demonstrate changes in placental immune cell composition. *Placenta*. 2019; 83: 53-56.
283. Gupta AK, Hasler P, Holzgreve W, Gebhardt S, Hahn S. Induction of neutrophil extracellular DNA lattices by placental microparticles and IL-8 and their presence in preeclampsia. *Hum Immunol*. 2005; 66: 1146-1154.
284. Regal JF, Lillegard KE, Bauer AJ, Elmquist BJ, Loeks-Johnson AC, Gilbert JS. Neutrophil Depletion Attenuates Placental Ischemia-Induced Hypertension in the Rat. *PLoS One*. 2015; 10: e0132063.
285. Veglia F, Perego M, Gabrilovich D. Myeloid-derived suppressor cells coming of age. *Nat Immunol*. 2018; 19: 108-119.
286. Sanaei MJ, Salimzadeh L, Bagheri N. Crosstalk between myeloid-derived suppressor cells and the immune system in prostate cancer: mDSCs and immune system in Prostate cancer. *J Leukoc Biol*. 2020; 107: 43-56.
287. Köstlin N, Kugel H, Spring B, et al. Granulocytic myeloid derived suppressor cells expand in human pregnancy and modulate T-cell responses. *Eur J Immunol*. 2014; 44: 2582-2591.
288. Köstlin N, Hofstädter K, Ostermeier AL, et al. Granulocytic Myeloid-Derived Suppressor Cells Accumulate in Human Placenta and Polarize toward a Th2 Phenotype. *J Immunol*. 2016; 196: 1132-1145.
289. Köstlin N, Ostermeier AL, Spring B, et al. HLA-G promotes myeloid-derived suppressor cell accumulation and suppressive activity during human pregnancy through engagement of the receptor ILT4. *Eur J Immunol*. 2017; 47: 374-384.
290. Wang Y, Liu Y, Shu C, et al. Inhibition of pregnancy-associated granulocytic myeloid-derived suppressor cell expansion and arginase-1 production in preeclampsia. *J Reprod Immunol*. 2018; 127: 48-54.
291. Al-ofi E, Coffelt SB, Anumba DO. Monocyte subpopulations from preeclamptic patients are abnormally skewed and exhibit exaggerated responses to Toll-like receptor ligands. *PLoS One*. 2012; 7: e42217.
292. Melgert BN, Spaans F, Borghuis T, et al. Pregnancy and preeclampsia affect monocyte subsets in humans and rats. *PLoS One*. 2012; 7: e45229.
293. Spaans F, Melgert BN, Borghuis T, et al. Extracellular adenosine triphosphate affects systemic and kidney immune cell populations in pregnant rats. *Am J Reprod Immunol*. 2014; 72: 305-316.
294. Ma Y, Ye Y, Zhang J, Ruan CC, Gao PJ. Immune imbalance is associated with the development of preeclampsia. *Medicine (Baltimore)*. 2019; 98: e15080.
295. Nunes PR, Romao-Veiga M, Peracoli JC, et al. Downregulation of CD163 in monocytes and its soluble form in the plasma is associated with a pro-inflammatory profile in pregnant women with preeclampsia. *Immunol Res*. 2019; 67: 194-201.
296. Romao M, Peracoli JC, Bannwart-Castro CF, et al. TLR-4 expression and pro-inflammatory cytokine production by peripheral blood monocytes from preeclamptic women. *Pregnancy Hypertens*. 2012; 2: 276.
297. Bui TM, Wiesolek HL, Sumagin R. ICAM-1: a master regulator of cellular responses in inflammation, injury resolution, and tumorigenesis. *J Leukoc Biol*. 2020.
298. Haller H, Ziegler EM, Homuth V, et al. Endothelial adhesion molecules and leukocyte integrins in preeclamptic patients. *Hypertension*. 1997; 29: 291-296.
299. Ogge G, Romero R, Chaiworapongsa T, et al. Leukocytes of pregnant women with small-for-gestational age neonates have a different phenotypic and metabolic activity from those of women with preeclampsia. *J Matern Fetal Neonatal Med*. 2010; 23: 476-487.
300. Toldi G, Vasarhelyi B, Biro E, Fugedi G, Molvarec, A. B7 costimulation and intracellular indoleamine-2,3-dioxygenase expression in peripheral blood of healthy pregnant and pre-eclamptic women. *Am J Reprod Immunol*. 2013; 69: 264-271.
301. McCord N, Ayuk P, McMahon M, Boyd RC, Sargent I, Redman C. System y+ arginine transport and NO production in peripheral blood mononuclear cells in pregnancy and preeclampsia. *Hypertension*. 2006; 47: 109-115.
302. Boutet M, Roland L, Thomas N, Bilodeau JF. Specific systemic antioxidant response to preeclampsia in late pregnancy: the study of intracellular glutathione peroxidases in maternal and fetal blood. *Am J Obstet Gynecol*. 2009; 200: 530 e531-537.
303. Seki H, Matuoka K, Inooku H, Takeda S. TNF-alpha from monocyte of patients with pre-eclampsia-induced apoptosis in human trophoblast cell line. *J Obstet Gynaecol Res*. 2007; 33: 408-416.
304. Romao-Veiga M, Bannwart-Castro CF, Borges VTM, Golim MA, Peracoli JC, Peracoli MTS. Increased TLR4 pathway activation and cytokine imbalance led to lipopolysaccharide tolerance in monocytes from preeclamptic women. *Pregnancy Hypertens*. 2020; 21: 159-165.
305. Al-Ofi EA, Anumba DO. Ligands of toll-like receptors 2/4 differentially alter markers of inflammation, adhesion and angiogenesis by monocytes from women with pre-eclampsia in co-culture with endothelial cells. *J Reprod Immunol*. 2017; 121: 26-33.
306. Romao-Veiga M, Matias ML, Ribeiro VR, et al. Induction of systemic inflammation by hyaluronan and hsp70 in women with pre-eclampsia. *Cytokine*. 2018; 105: 23-31.
307. Xu H, Shi Q, Mo Y, Wu L, Gu J, Xu Y. Downregulation of alpha7 nicotinic acetylcholine receptors in peripheral blood monocytes is associated with enhanced inflammation in preeclampsia. *BMC Pregnancy Childbirth*. 2019; 19: 188.
308. Matias ML, Gomes VJ, Romao-Veiga M, et al. Silibinin Downregulates the NF-kappaB Pathway and NLRP1/NLRP3 Inflammasomes in Monocytes from Pregnant Women with Preeclampsia. *Molecules*. 2019: 24.
309. Matzinger P. An innate sense of danger. *Semin Immunol*. 1998; 10: 399-415.
310. Lotze MT, Deisseroth A, Rubartelli A. Damage associated molecular pattern molecules. *Clin Immunol*. 2007; 124: 1-4.
311. Gomez-Lopez N, Motomura K, Miller D, Garcia-Flores V, Galaz J, Romero R. Inflammasomes: their Role in Normal and Complicated Pregnancies. *J Immunol*. 2019; 203: 2757-2769.
312. Joerger-Messeri MS, Hoesli IM, Rusterholz C, Lapaire O. Stimulation of monocytes by placental microparticles involves toll-like receptors and nuclear factor kappa-light-chain-enhancer of activated B cells. *Front Immunol*. 2014; 5: 173.
313. Holthe MR, Lyberg T, Staff AC, Berge LN. Leukocyte-platelet interaction in pregnancies complicated with preeclampsia. *Platelets*. 2005; 16: 91-97.
314. Major HD, Campbell RA, Silver RM, Branch DW, Weyrich AS. Synthesis of sFlt-1 by platelet-monocyte aggregates contributes to the pathogenesis of preeclampsia. *Am J Obstet Gynecol*. 2014; 210: 547 e541-547.
315. Luyendyk JP, Schoenecker JG, Flick MJ. The multifaceted role of fibrinogen in tissue injury and inflammation. *Blood*. 2019; 133: 511-520.
316. Al-ofi E, Coffelt SB, Anumba DO. Fibrinogen, an endogenous ligand of Toll-like receptor 4, activates monocytes in pre-eclamptic patients. *J Reprod Immunol*. 2014; 103: 23-28.
317. Xu Y, Romero R, Miller D, et al. An M1-like Macrophage Polarization in Decidual Tissue during Spontaneous Preterm Labor That Is Attenuated by Rosiglitazone Treatment. *J Immunol*. 2016; 196: 2476-2491.
318. Jiang X, Du MR, Li M, Wang H. Three macrophage subsets are identified in the uterus during early human pregnancy. *Cell Mol Immunol*. 2018; 15: 1027-1037.
319. Pique-Regi R, Romero R, Tarca AL, et al. Single cell transcriptional signatures of the human placenta in term and preterm parturition. *Elife*. 2019; 8.
320. Zulu MZ, Martinez FO, Gordon S, Gray CM. The Elusive Role of Placental Macrophages: the Hofbauer Cell. *J Innate Immun*. 2019; 11: 447-456.
321. Katabuchi H, Yih S, Ohba T, et al. Characterization of macrophages in the decidual atherotic spiral artery with special reference to the cytology of foam cells. *Med Electron Microsc*. 2003; 36: 253-262.

322. Gill N, Leng Y, Romero R, et al. The immunophenotype of decidual macrophages in acute atherosclerosis. *Am J Reprod Immunol*. 2019; 81: e13098.
323. De Wolf F, Robertson WB, Brosens, I. The ultrastructure of acute atherosclerosis in hypertensive pregnancy. *Am J Obstet Gynecol*. 1975; 123: 164-174.
324. Staff AC, Johnsen GM, Dechend R, Redman CWG. Preeclampsia and uteroplacental acute atherosclerosis: immune and inflammatory factors. *J Reprod Immunol*. 2014; 101-102: 120-126.
325. Kim YM, Chaemsaitong P, Romero R, et al. The frequency of acute atherosclerosis in normal pregnancy and preterm labor, preeclampsia, small-for-gestational age, fetal death and midtrimester spontaneous abortion. *J Matern Fetal Neonatal Med*. 2015; 28: 2001-2009.
326. Staff AC, Fjeldstad HE, Fosheim IK, et al. Failure of physiological transformation and spiral artery atherosclerosis: their roles in preeclampsia. *Am J Obstet Gynecol*. 2020.
327. Khong TY. Immunohistologic study of the leukocytic infiltrate in maternal uterine tissues in normal and preeclamptic pregnancies at term. *Am J Reprod Immunol Microbiol*. 1987; 15: 1-8.
328. Labarrere CA, Faulk WP. Intercellular adhesion molecule-1 (ICAM-1) and HLA-DR antigens are expressed on endothelial cytotrophoblasts in abnormal pregnancies. *Am J Reprod Immunol*. 1995; 33: 47-53.
329. Reister F, Frank HG, Heyl W, et al. The distribution of macrophages in spiral arteries of the placental bed in pre-eclampsia differs from that in healthy patients. *Placenta*. 1999; 20: 229-233.
330. Kim JS, Romero R, Cushenberry E, et al. Distribution of CD14+ and CD68+ macrophages in the placental bed and basal plate of women with preeclampsia and preterm labor. *Placenta*. 2007; 28: 571-576.
331. Schonkeren D, van der Hoorn ML, Khedoe P, et al. Differential distribution and phenotype of decidual macrophages in preeclamptic versus control pregnancies. *Am J Pathol*. 2011; 178: 709-717.
332. Myatt L, Eis AL, Brockman DE, Kossenjans W, Greer I, Lyall F. Inducible (type II) nitric oxide synthase in human placental villous tissue of normotensive, pre-eclamptic and intrauterine growth-restricted pregnancies. *Placenta*. 1997; 18: 261-268.
333. Heyward CY, Sones JL, Lob HE, et al. The decidua of preeclamptic-like BPH/5 mice exhibits an exaggerated inflammatory response during early pregnancy. *J Reprod Immunol*. 2017; 120: 27-33.
334. Li ZH, Wang LL, Liu H, et al. Galectin-9 Alleviates LPS-Induced Preeclampsia-Like Impairment in Rats via Switching Decidual Macrophage Polarization to M2 Subtype. *Front Immunol*. 2018; 9: 3142.
335. Zhang YH, Aldo P, You Y, et al. Trophoblast-secreted soluble-PD-L1 modulates macrophage polarization and function. *J Leukoc Biol*. 2020.
336. Boyle JJ, Harrington HA, Piper E, et al. Coronary intraplaque hemorrhage evokes a novel atheroprotective macrophage phenotype. *Am J Pathol*. 2009; 174: 1097-1108.
337. Kadl A, Meher AK, Sharma PR, et al. Identification of a novel macrophage phenotype that develops in response to atherogenic phospholipids via Nrf2. *Circ Res*. 2010; 107: 737-746.
338. Colin S, Chinetti-Gbaguidi G, Staels B. Macrophage phenotypes in atherosclerosis. *Immunol Rev*. 2014; 262: 153-166.
339. Zhao H, Wong RJ, Kalish FS, Nayak NR, Stevenson DK. Effect of heme oxygenase-1 deficiency on placental development. *Placenta*. 2009; 30: 861-868.
340. Schumacher A, Wafula PO, Teles A, et al. Blockage of heme oxygenase-1 abrogates the protective effect of regulatory T cells on murine pregnancy and promotes the maturation of dendritic cells. *PLoS One*. 2012; 7: e42301.
341. Su H, Na N, Zhang X, Zhao Y. The biological function and significance of CD74 in immune diseases. *Inflamm Res*. 2017; 66: 209-216.
342. Przybyl L, Haase N, Golic M, et al. CD74-Downregulation of Placental Macrophage-Trophoblastic Interactions in Preeclampsia. *Circ Res*. 2016; 119: 55-68.
343. Houser BL, Tilburgs T, Hill J, Nicotra ML, Strominger JL. Two unique human decidual macrophage populations. *J Immunol*. 2011; 186: 2633-2642.
344. Reister F, Frank HG, Kingdom JC, et al. Macrophage-induced apoptosis limits endovascular trophoblast invasion in the uterine wall of preeclamptic women. *Lab Invest*. 2001; 81: 1143-1152.
345. Renaud SJ, Postovit LM, Macdonald-Goodfellow SK, McDonald GT, Caldwell JD, Graham CH. Activated macrophages inhibit human cytotrophoblast invasiveness in vitro. *Biol Reprod*. 2005; 73: 237-243.
346. Renaud SJ, Macdonald-Goodfellow SK, Graham CH. Coordinated regulation of human trophoblast invasiveness by macrophages and interleukin 10. *Biol Reprod*. 2007; 76: 448-454.
347. Petsas G, Jeschke U, Richter DU, et al. Aberrant expression of corticotropin-releasing hormone in pre-eclampsia induces expression of FasL in maternal macrophages and extravillous trophoblast apoptosis. *Mol Hum Reprod*. 2012; 18: 535-545.
348. Wetzka B, Nusing R, Charnock-Jones DS, Schafer W, Zahradnik HP, Smith SK. Cyclooxygenase-1 and -2 in human placenta and placental bed after normal and pre-eclamptic pregnancies. *Hum Reprod*. 1997; 12: 2313-2320.
349. Haeger M, Bengtson A, Karlsson K, Heideman M. Complement activation and anaphylatoxin (C3a and C5a) formation in preeclampsia and by amniotic fluid. *Obstet Gynecol*. 1989; 73: 551-556.
350. Singh J, Ahmed A, Girardi G. Role of complement component C1q in the onset of preeclampsia in mice. *Hypertension*. 2011; 58: 716-724.
351. Wang W, Irani RA, Zhang Y, et al. Autoantibody-mediated complement C3a receptor activation contributes to the pathogenesis of preeclampsia. *Hypertension*. 2012; 60: 712-721.
352. Ma Y, Kong LR, Ge Q, et al. Complement 5a-mediated trophoblasts dysfunction is involved in the development of pre-eclampsia. *J Cell Mol Med*. 2018; 22: 1034-1046.
353. Szukiewicz D, Szukiewicz A, Maslinska D, Gujski M, Poppe P, Mazurek-Kantor J. Mast cell number, histamine concentration and placental vascular response to histamine in preeclampsia. *Inflamm Res*. 1999; 48: S39-40.
354. Szewczyk G, Pyzlak M, Klimkiewicz J, Smiertka W, Miedzinska-Maciejewska M, Szukiewicz D. Mast cells and histamine: do they influence placental vascular network and development in preeclampsia?. *Mediators Inflamm*. 2012; 2012: 307189.
355. Mitani R, Maeda K, Fukui R, et al. Production of human mast cell chymase in human myometrium and placenta in cases of normal pregnancy and preeclampsia. *Eur J Obstet Gynecol Reprod Biol*. 2002; 101: 155-160.
356. Nakano A, Kishi F, Minami K, Wakabayashi H, Nakaya Y, Kido H. Selective conversion of big endothelins to tracheal smooth muscle-constricting 31-amino acid-length endothelins by chymase from human mast cells. *J Immunol*. 1997; 159: 1987-1992.
357. Tsang JCH, Vong JSL, Ji L, et al. Integrative single-cell and cell-free plasma RNA transcriptomics elucidates placental cellular dynamics. *Proc Natl Acad Sci U S A*. 2017; 114: E7786-E7795.
358. Tarca AL, Romero R, Erez O, et al. Maternal whole blood mRNA signatures identify women at risk of early preeclampsia: a longitudinal study. *J Matern Fetal Neonatal Med*. 2020: 1-12.

How to cite this article: Miller D, Motomura K, Galaz J, Gershtater M, Lee ED, Romero R, Gomez-Lopez N. Cellular immune responses in the pathophysiology of preeclampsia. *J Leukoc Biol*. 2022;111:237-260.
<https://doi.org/10.1002/JLB.5RU1120-787RR>