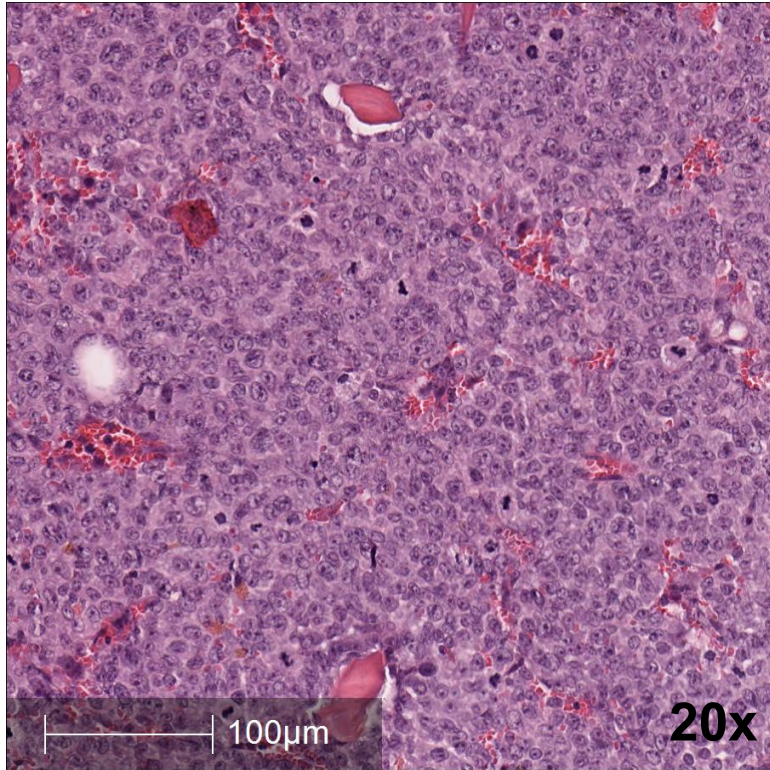


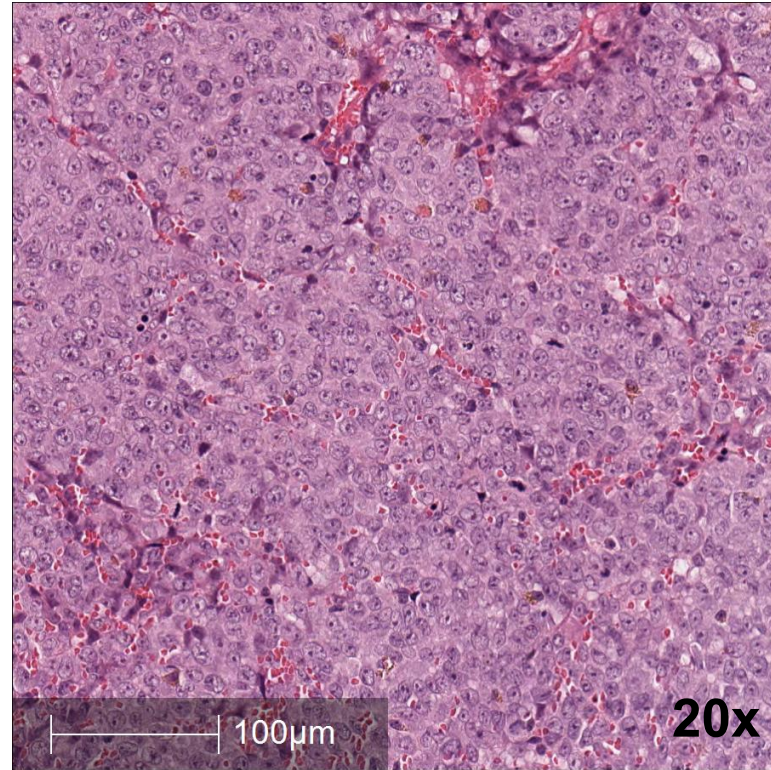
Supplemental Figure 1: Chemical structures of compounds considered in this study.

A



untreated

B

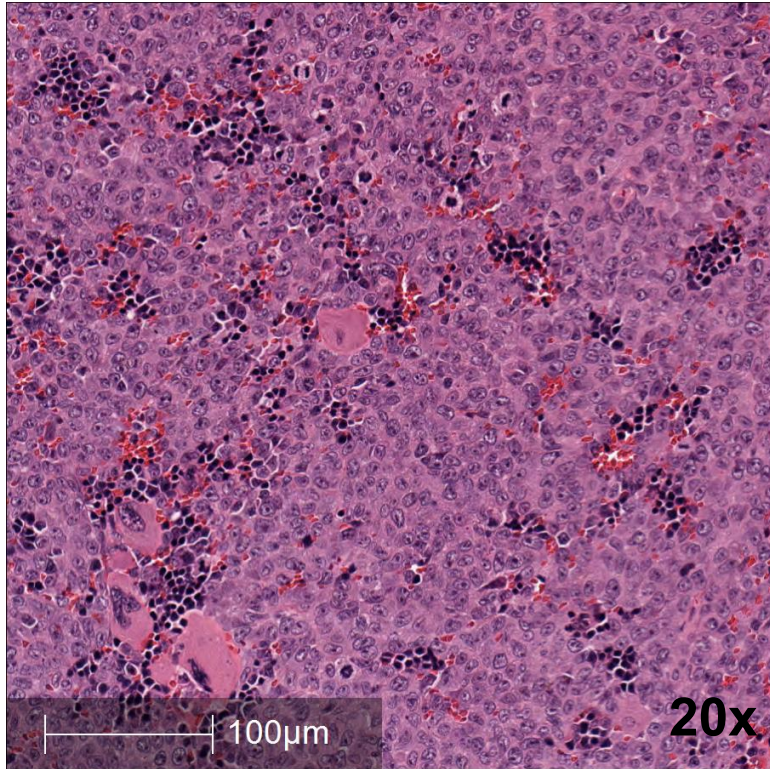


Cytarabine

Bone marrow

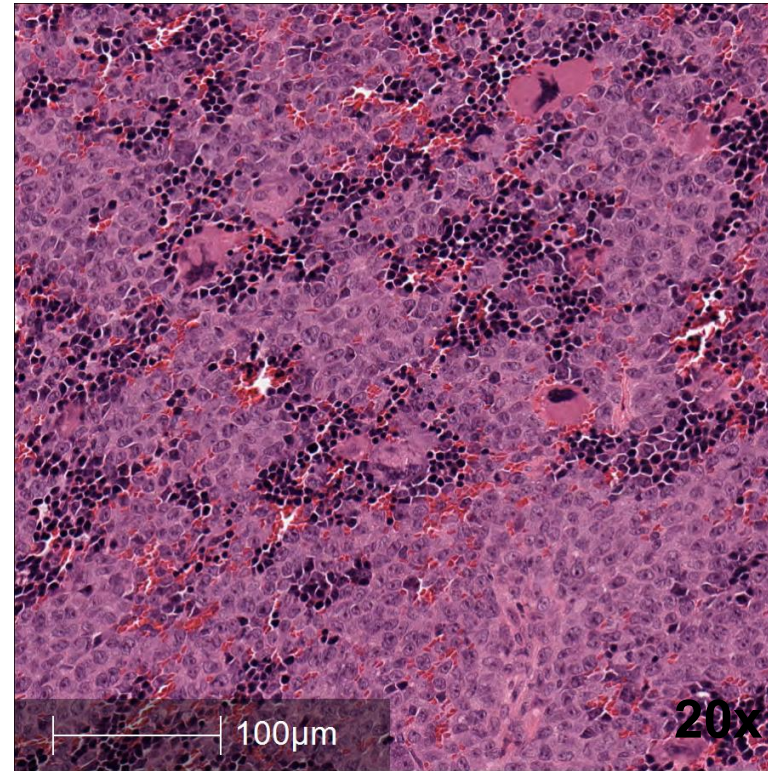
Supplemental Figure 2: Representative H & E stained tissue sections from the BM (A, B) and spleen (C, D) from M14 xenograft studies.

C



untreated

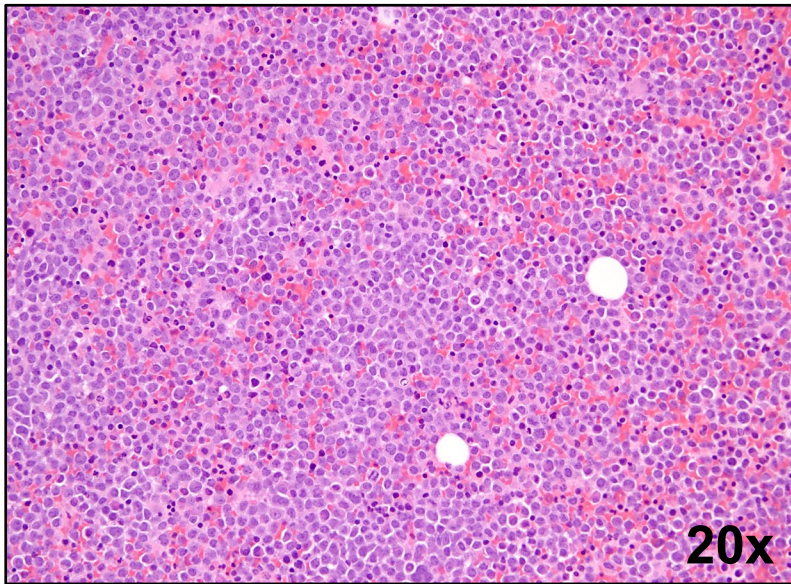
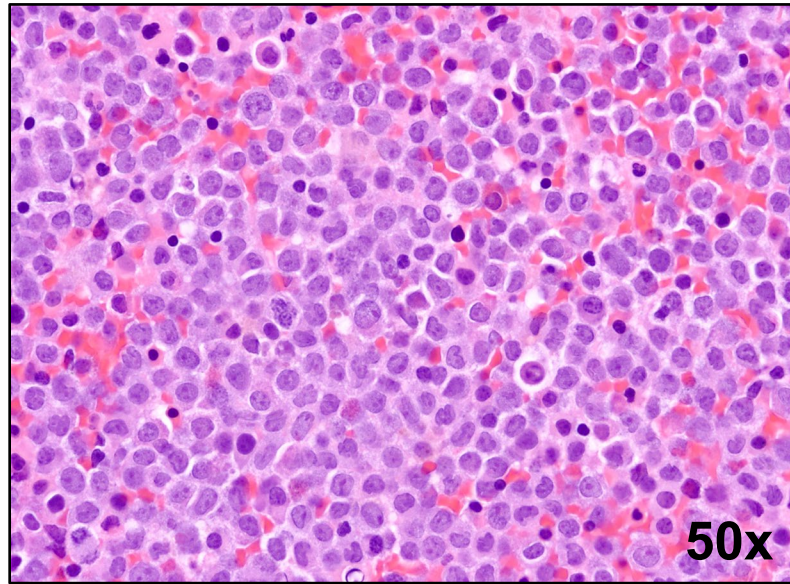
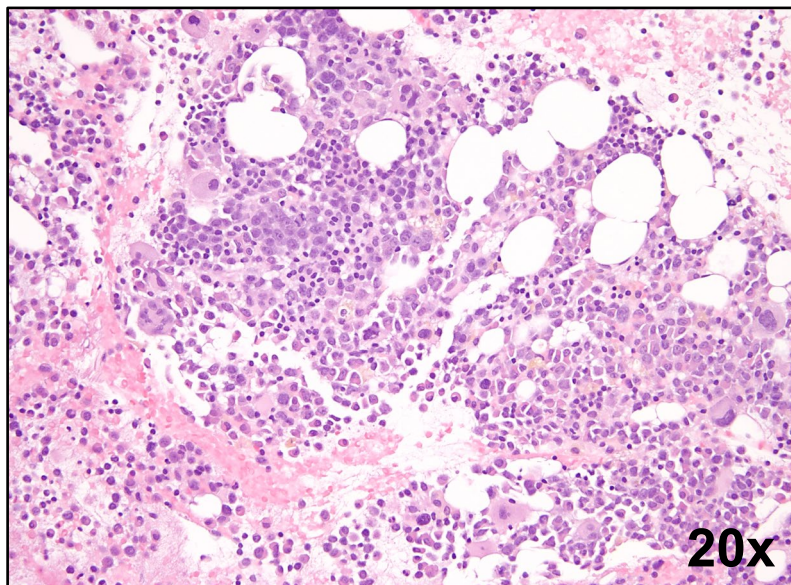
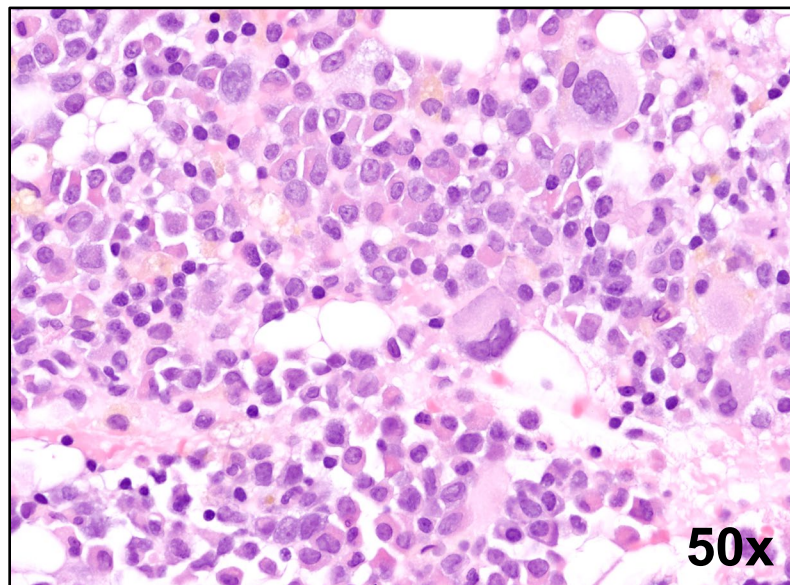
D



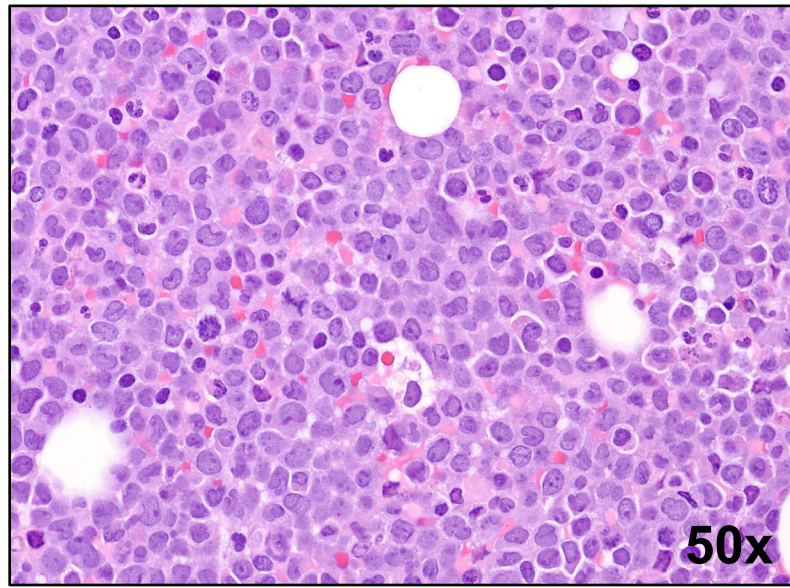
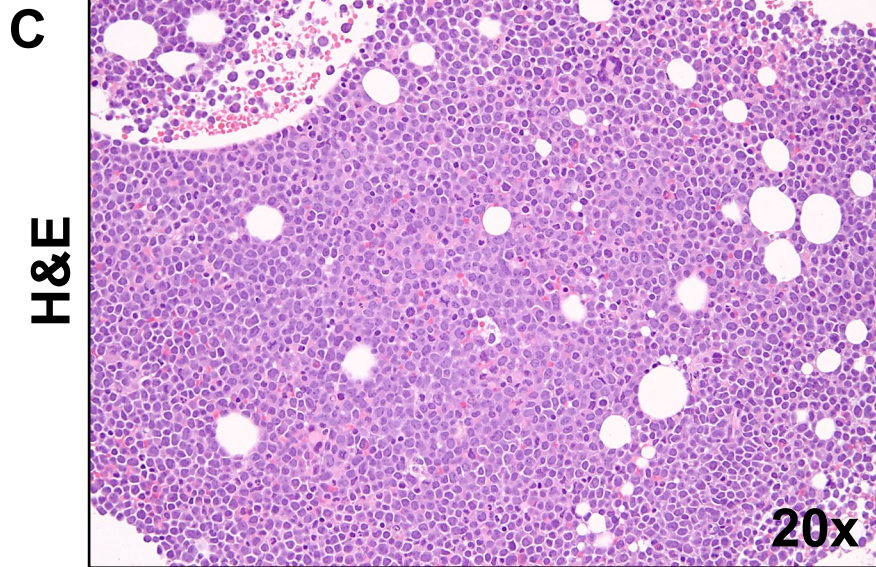
Cytarabine

Spleen

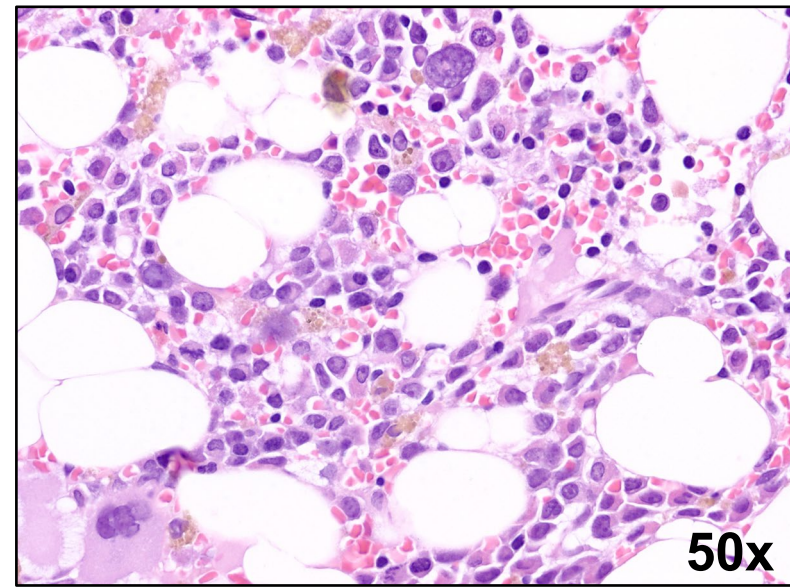
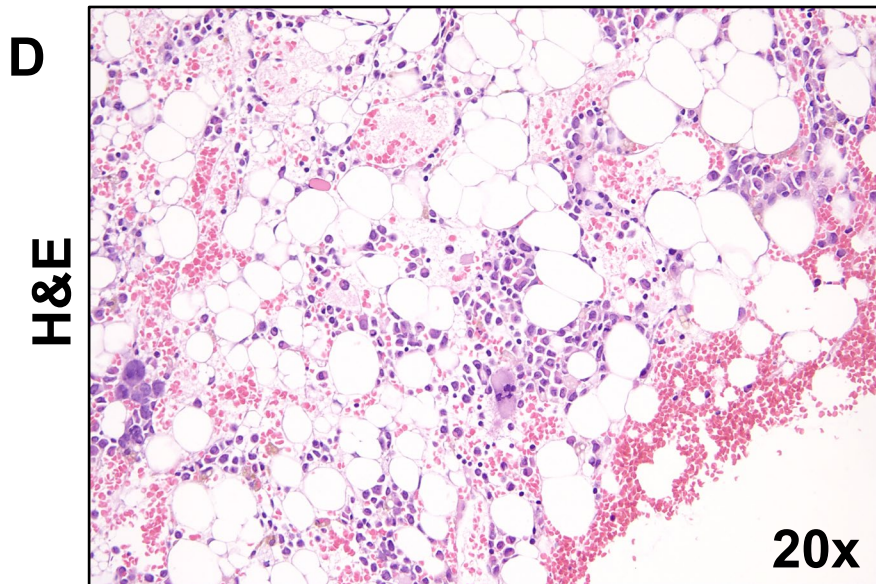
Supplemental Figure 2: Representative H & E stained tissue sections from the BM (A, B) and spleen (C, D) from M14 xenograft studies.

A**H&E****20x****50x****pt #9 Dx****B****H&E****20x****50x****pt #9, Day 21**

Supplemental Figure 3:
Representative H & E
stained human BM tissue
sections from FLT3-
mutated AML patients
(see Table 1 for patient
characteristics).

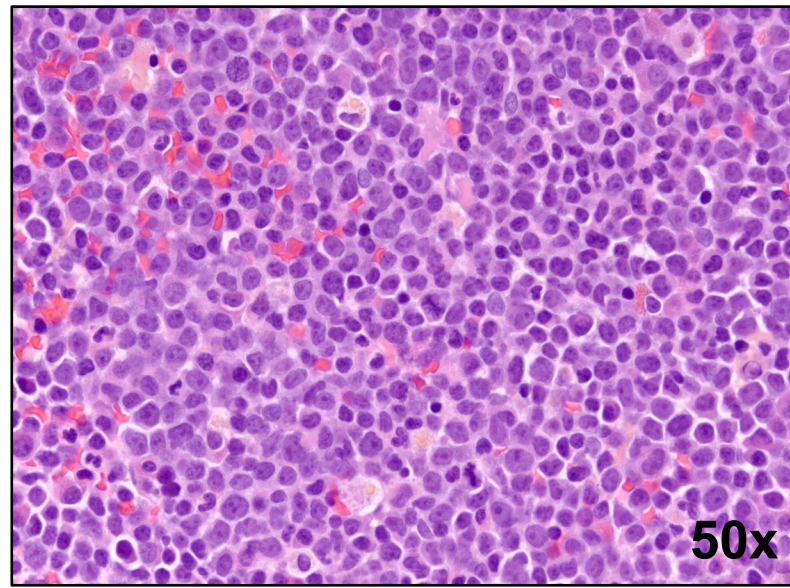
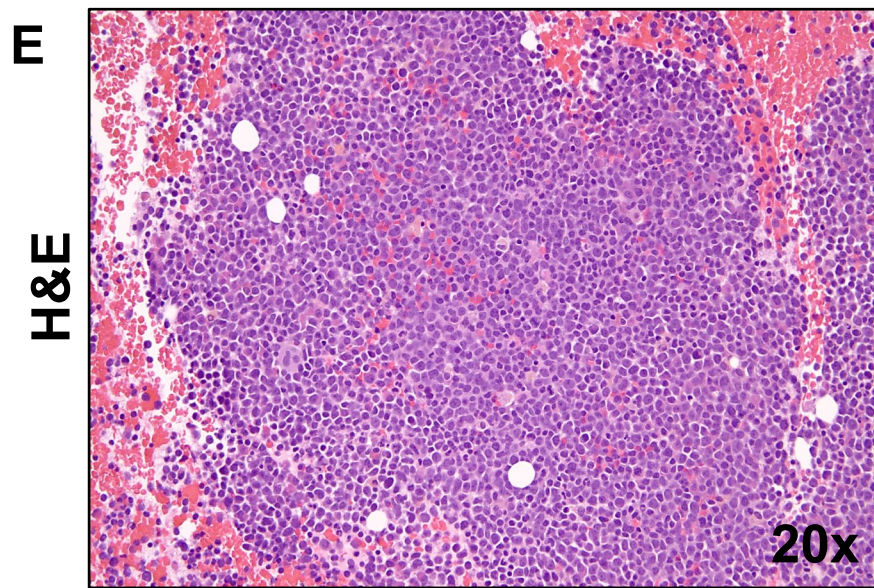


pt #10 Dx

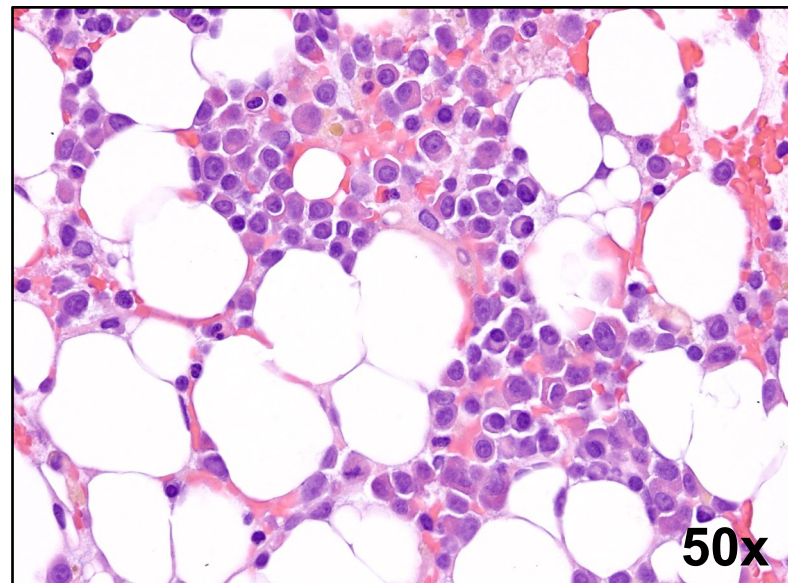
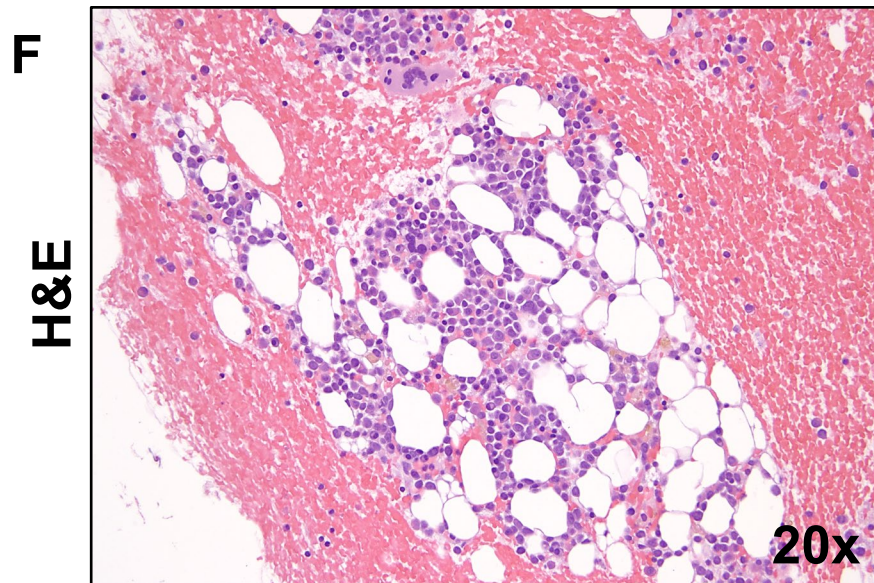


pt #10, Day 21

Supplemental Figure 3:
Representative H & E
stained human BM tissue
sections from FLT3-
mutated AML patients
(see Table 1 for patient
characteristics).



pt #11 Dx

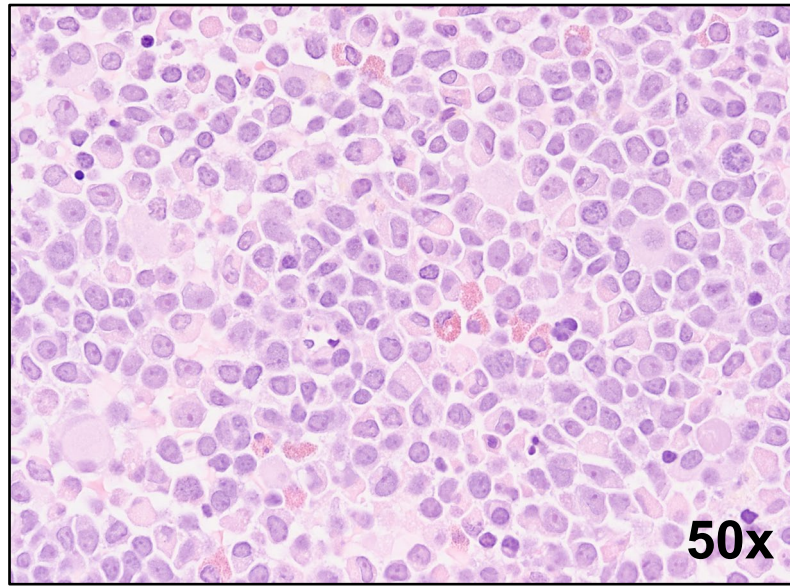
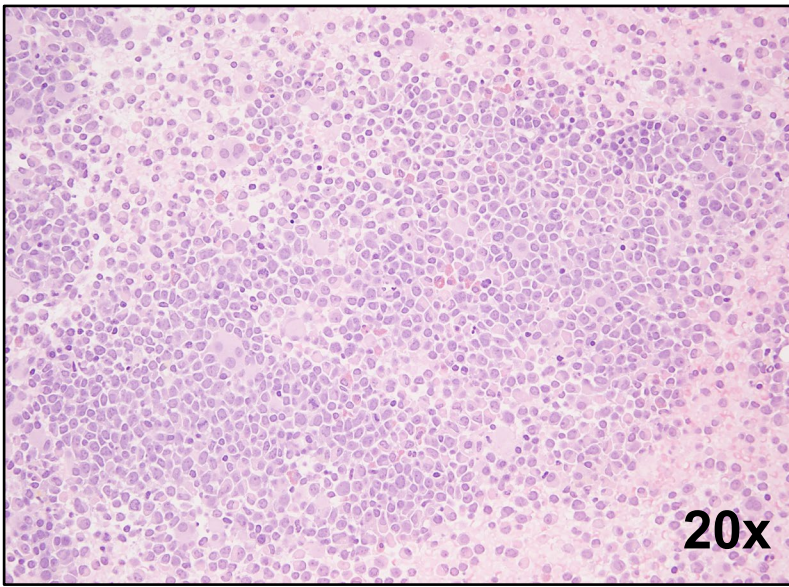


pt #11, Day 21

Supplemental Figure 3:
Representative H & E
stained human BM tissue
sections from FLT3-
mutated AML patients
(see Table 1 for patient
characteristics).

G

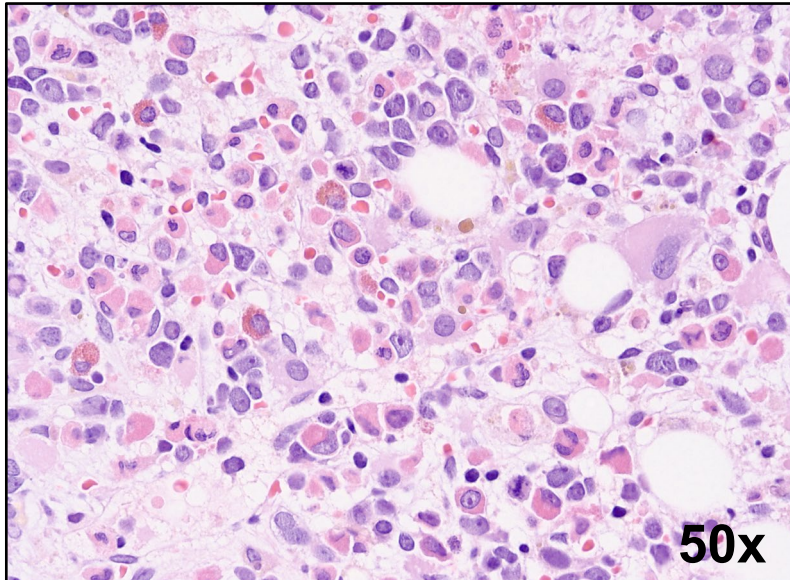
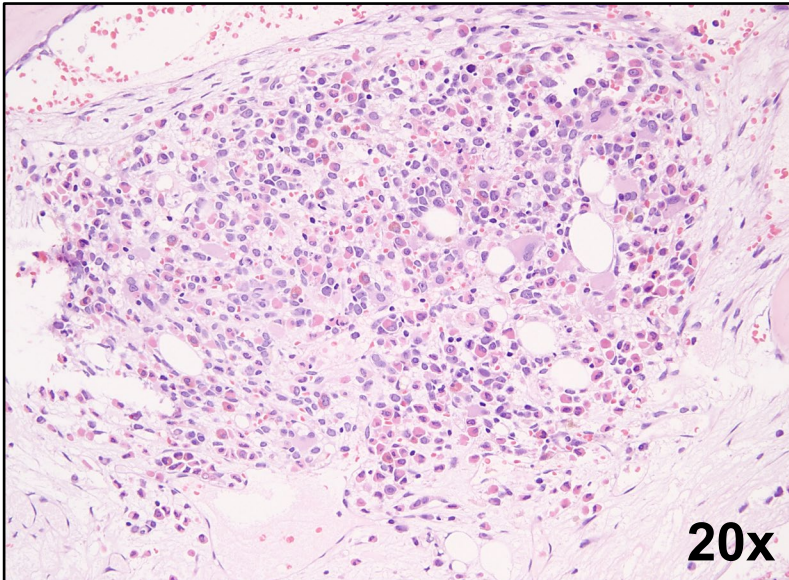
H&E



pt #12 Dx

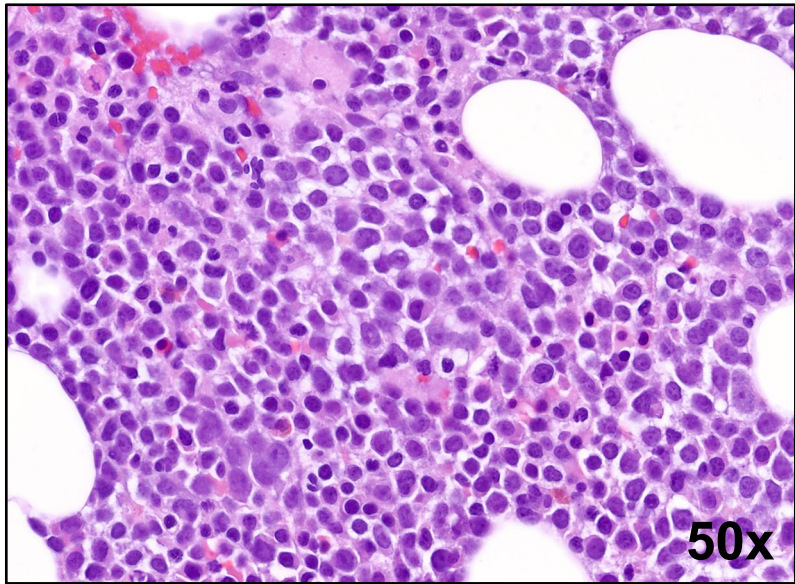
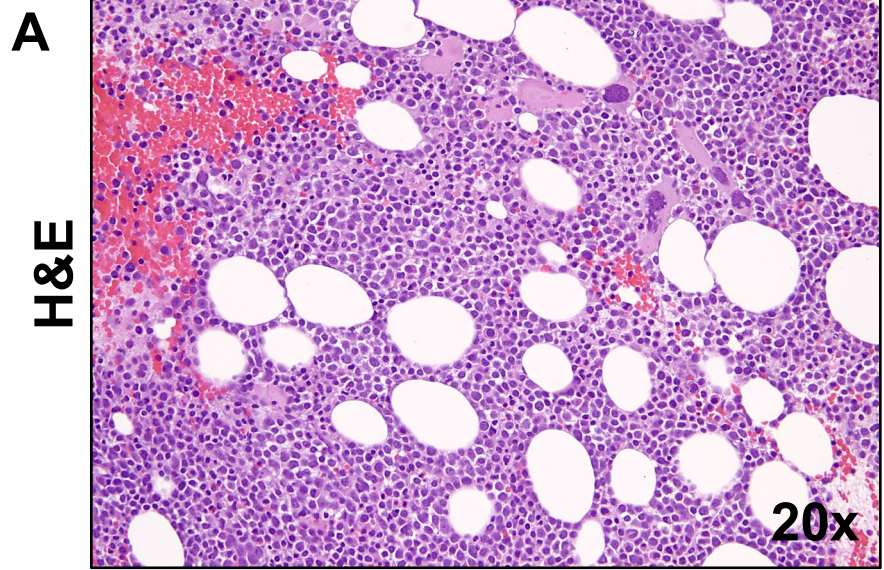
H

H&E

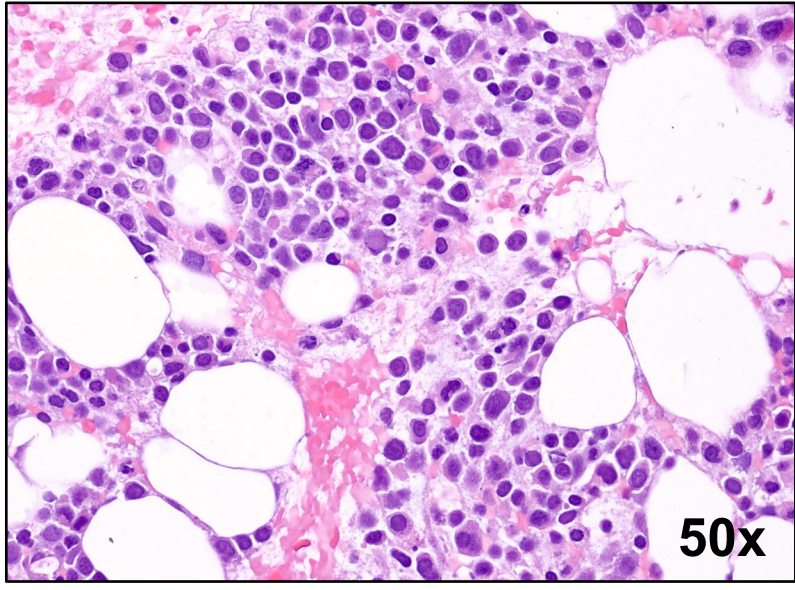
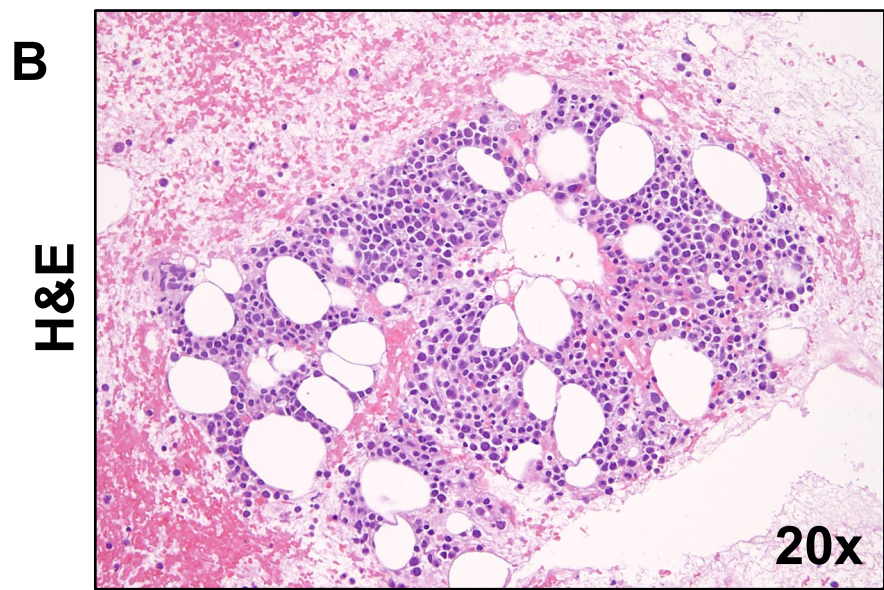


pt #12, Day 14

Supplemental Figure 3:
Representative H & E
stained human BM tissue
sections from FLT3-
mutated AML patients
(see Table 1 for patient
characteristics).



pt #13, Dx

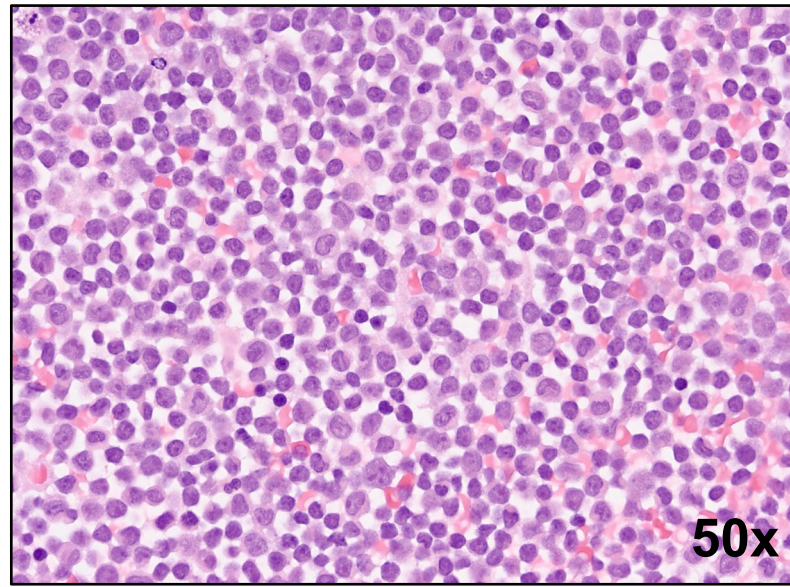
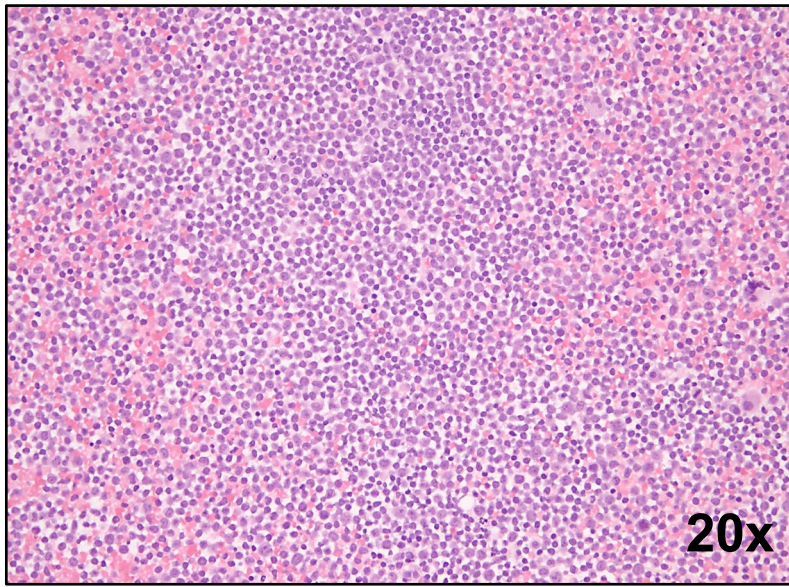


pt #13, Day 14

Supplemental Figure 4:
Representative H & E
stained human BM tissue
sections from non-FLT3-
mutated AML patients (see
Table 1 for patient
characteristics). Note: No
tissue was available for H&E
staining for patient #17.

C

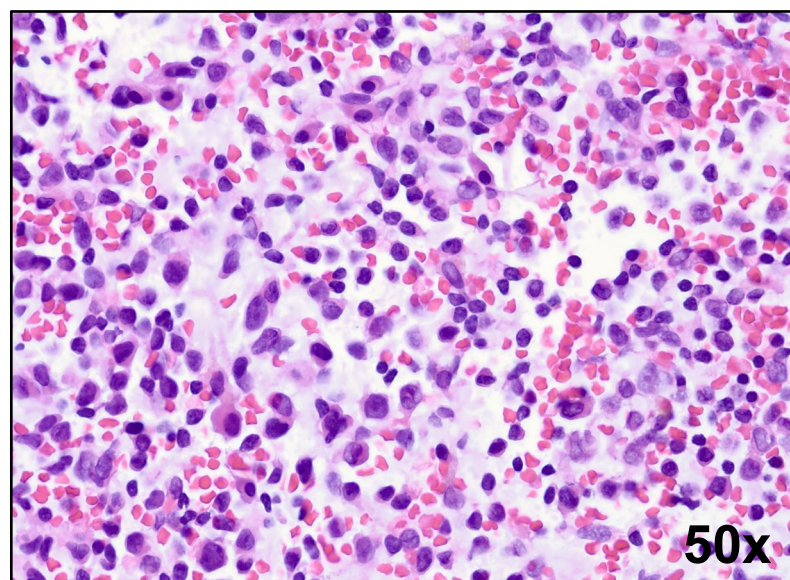
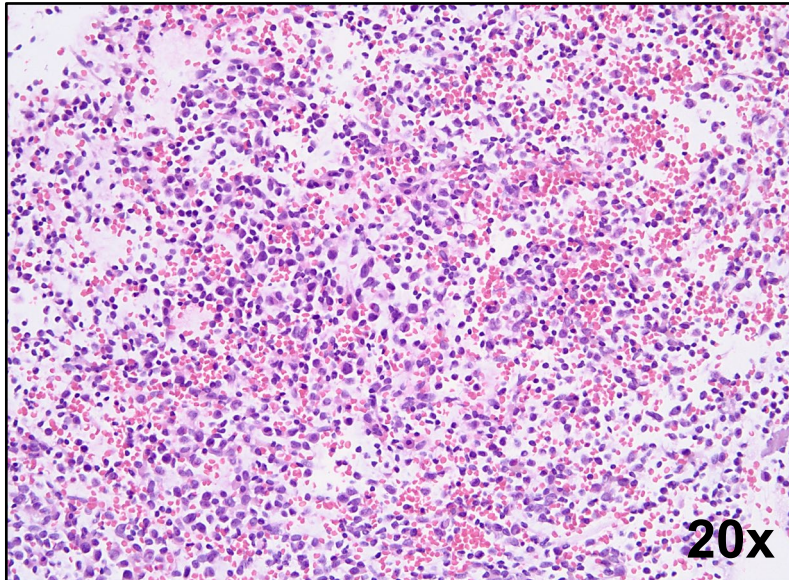
H&E



pt #14 Dx

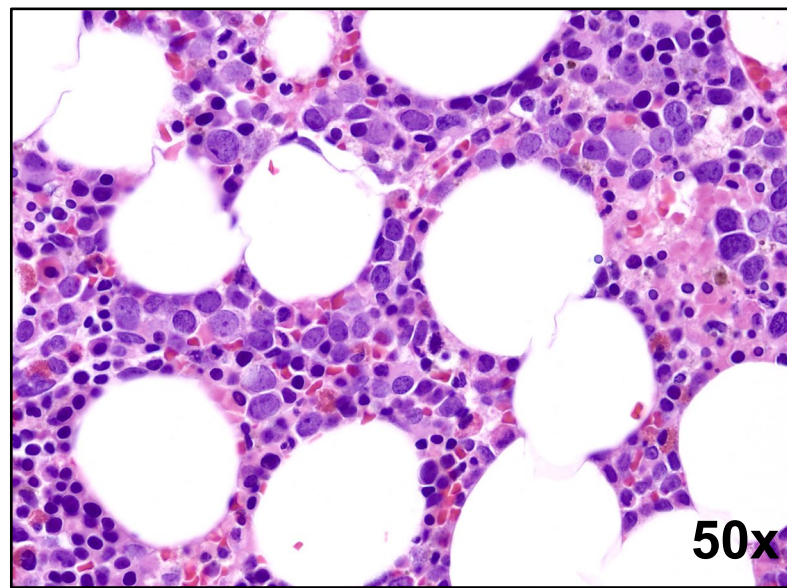
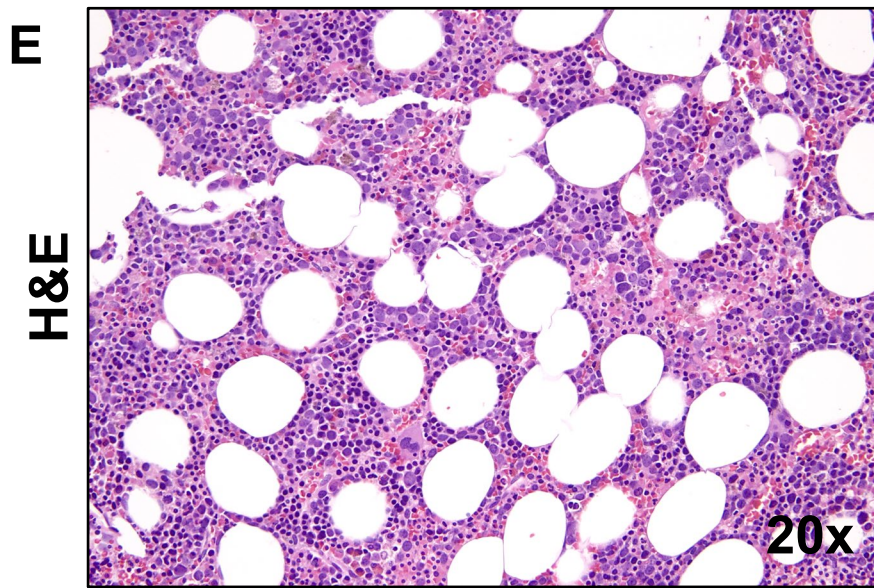
D

H&E

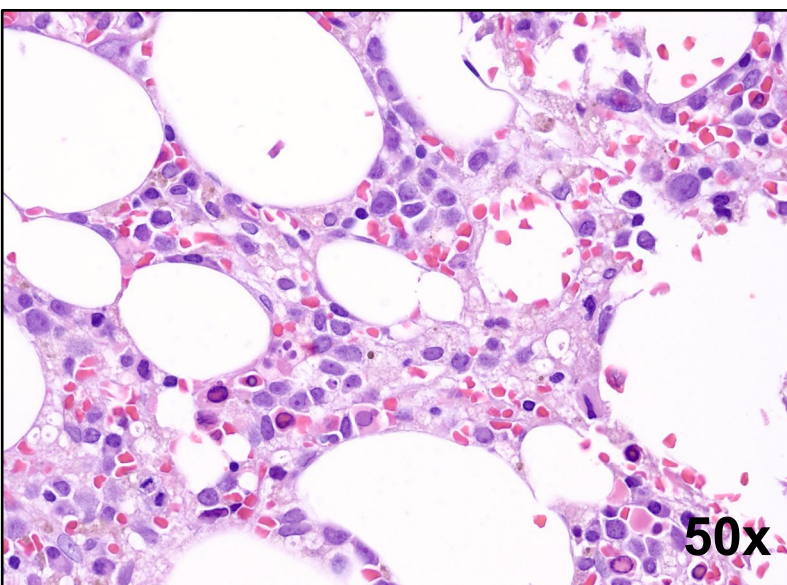
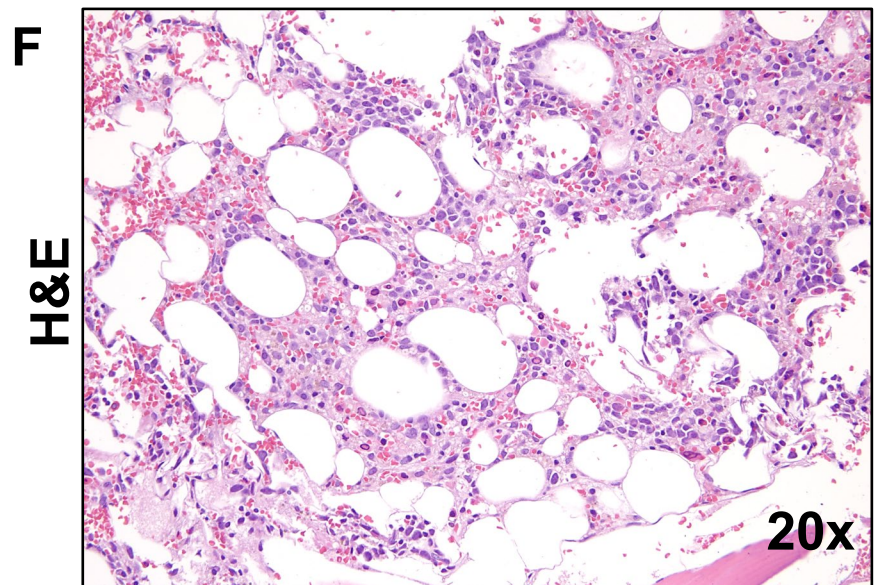


pt #14, Day 14

Supplemental Figure 4:
Representative H & E
stained human BM tissue
sections from non-FLT3-
mutated AML patients (see
Table 1 for patient
characteristics). Note: No
tissue was available for H&E
staining for patient #17.



pt #15 Dx

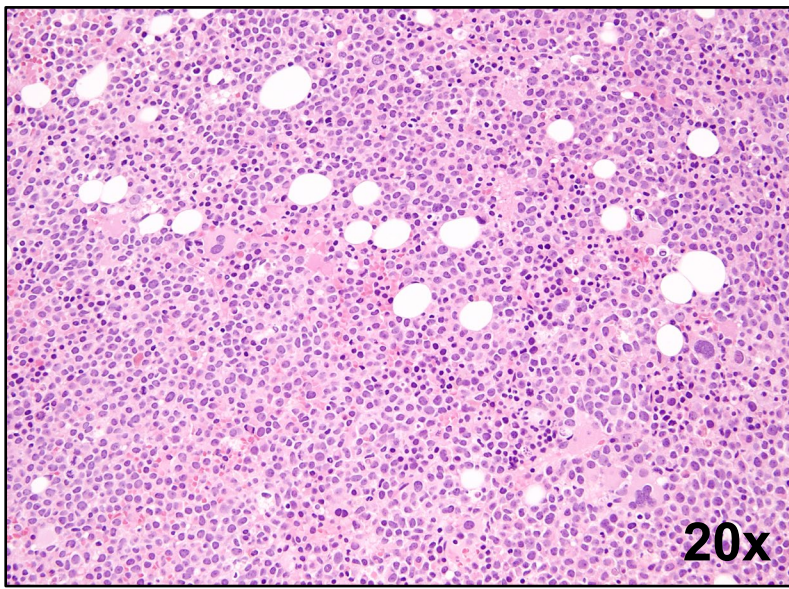


pt #15, Day 14

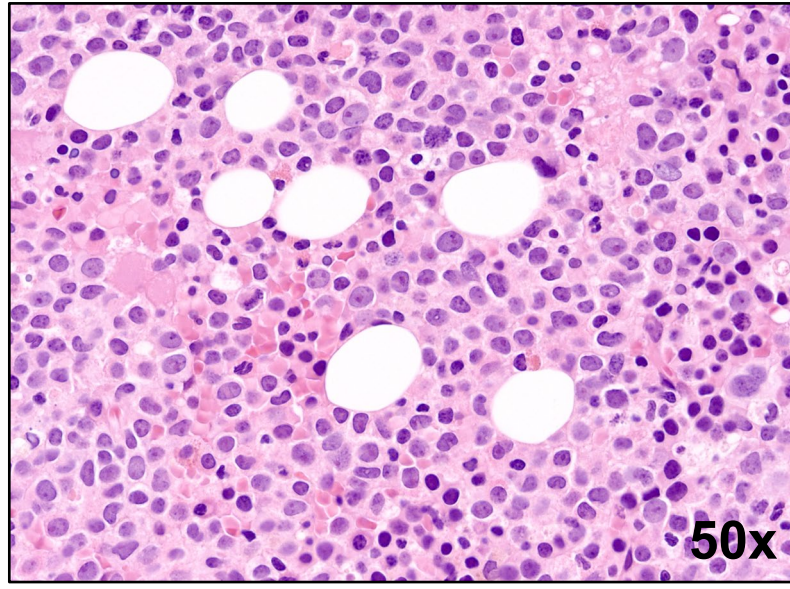
Supplemental Figure 4:
Representative H & E
stained human BM tissue
sections from non-FLT3-
mutated AML patients (see
Table 1 for patient
characteristics). Note: No
tissue was available for H&E
staining for patient #17.

G

H&E



20x

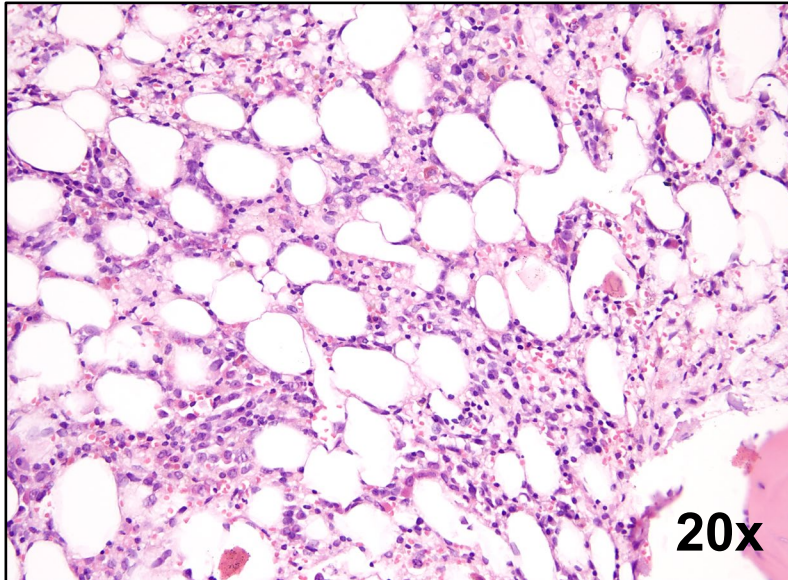


50x

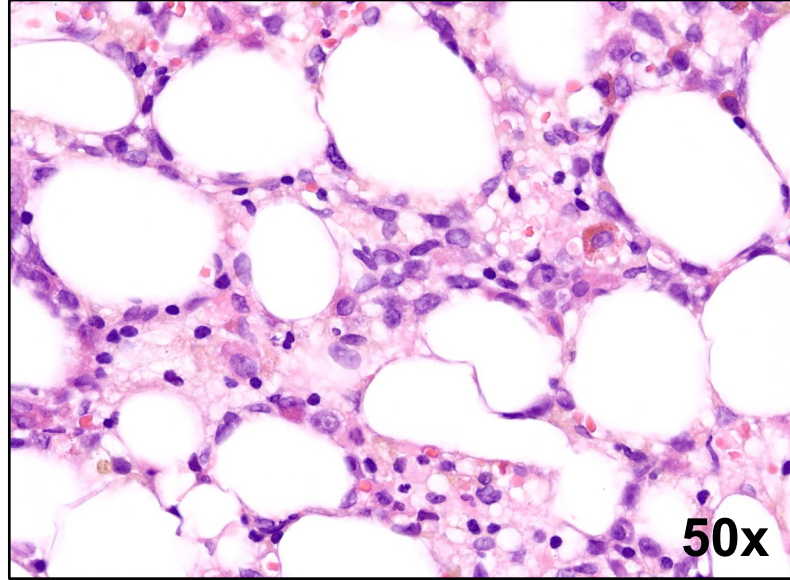
pt #16 Dx

I

H&E



20x



50x

pt #16, Day 14

Supplemental Figure 4:
Representative H & E
stained human BM tissue
sections from non-FLT3-
mutated AML patients (see
Table 1 for patient
characteristics). Note: No
tissue was available for H&E
staining for patient #17.