

Satturwar Swati (Orcid ID: 0000-0003-1960-9847)
Pantanowitz Liron (Orcid ID: 0000-0001-8182-5503)
Cantley Richard (Orcid ID: 0000-0002-6564-3889)

TITLE PAGE

Cytologic Features of Small Cell Melanoma

Swati Satturwar MD^{1,2}, Liron Pantanowitz MD MHA^{2,3}, Rajiv M. Patel MD^{3,4}, Richard Cantley MD³

1. Department of Pathology, Ohio State University, Columbus, OH, USA
2. Department of Pathology, University of Pittsburgh, Pittsburgh, PA, USA
3. Department of Pathology, Michigan Medicine, University of Michigan, Ann Arbor, MI, USA
4. Department of Dermatology, Michigan Medicine, University of Michigan, Ann Arbor, MI, USA

Running title: Small cell melanoma cytology

Conflict of interest: None

Funding Statement: None

Authorship statement: All authors were equally involved in the conceptualization, review, writing and editing of this manuscript.

Data availability statement: Data will be available upon request to the corresponding author Dr. Richard Cantley.

For correspondence: Richard Cantley, MD, Department of Pathology, University of Michigan, MCRC Bldg 25, 2800 Plymouth Road, Ann Arbor, MI, USA. Email: rcantley@med.umich.edu

This is the author manuscript accepted for publication and has undergone full peer review but has not been through the copyediting, typesetting, pagination and proofreading process, which may lead to differences between this version and the Version of Record. Please cite this article as doi: [10.1002/dc.24889](https://doi.org/10.1002/dc.24889)

This article is protected by copyright. All rights reserved.

Abstract:

Background: Small cell melanoma (SCM) is an aggressive variant of malignant melanoma, which has been rarely described in the cytology literature. The aim of this study was to describe the clinical and cytologic features of a series of cases of metastatic SCM with discussion of the differential diagnosis of metastatic SCM diagnosed by fine needle aspiration (FNA).

Material and methods: A retrospective review of cases was performed, identifying 2 FNA cases and 1 core biopsy with touch preparation of metastatic small cell melanoma. Clinical presentation, cytomorphology features, ancillary tests and final diagnoses were documented and analyzed.

Results: Patients ranged in age from 69 to 85 years-old. Cytomorphologic features included the presence of a monomorphic population of dispersed small round blue cells, with scant cytoplasm, high nuclear to cytoplasmic ratios, dense nuclear chromatin and inconspicuous nucleoli. Acinar like arrangement (n=2) and nuclear molding (n=1) were also present. All cases showed diffuse positivity for the melanocytic markers SOX10 and Melan A by immunohistochemistry. Expression of neuroendocrine markers was variable.

Conclusions: Diagnosing metastatic SCM at unusual anatomic sites by FNA cytology is a challenging task, especially in patients without known prior history of melanoma. Cytomorphology of SCM is unique, differing from conventional malignant melanoma in many aspects, including the presence of acinar formations and a lack of typical melanoma features, such as large cells, intracytoplasmic melanin, and macronucleoli. Immunohistochemistry is critical for establishing the diagnosis of SCM.

Key words: Cytomorphology; fine needle aspiration; malignant melanoma; metastatic melanoma; small cell melanoma; touch preparation

Introduction:

Fine needle aspiration (FNA) has a limited role in the diagnosis of primary cutaneous malignant melanoma (MM), as these lesions are usually diagnosed by punch biopsy, shave biopsy or elliptical excision. However, MM frequently presents as metastatic disease at superficial cutaneous and non-cutaneous sites. As a rapid, safe and inexpensive method, FNA has become a test of choice for diagnosing such metastatic disease and procuring material for

ancillary/molecular testing in patients with a known history of melanoma. Several studies have shown that the sensitivity and specificity of FNA for diagnosing metastatic melanoma is >95%.¹⁻

⁵ Diagnosis of metastatic melanoma remains challenging in patients without prior history of melanoma. The situation is further complicated when unusual variants of MM present as metastatic disease.⁶

MM is a great mimicker with diverse morphology. Hence, when interpreting FNA cytology the consideration of MM in the differential diagnosis is commonplace.⁷ The diagnosis of MM on FNA is typically verified with immunohistochemistry, which can essentially confirm the diagnosis in most cases. Different histologic variants of melanoma include (i) common variants such as spindle cell, nodular and desmoplastic melanoma, and (ii) unusual variants such as balloon cell, rhabdoid, signet cell, myxoid, choroid, metaplastic and small cell melanoma (SCM).

^{8,9} The cytology features of the usual and many unusual variants of MM in FNA specimens are well-described in the literature. However, there is a sparsity of literature describing the

Author Manuscript

cytomorphology of more unusual subtypes such as SCM.¹⁰ The aim of this study is to thus review the clinical presentation, cytomorphologic spectrum and immunophenotypic features in a case series of SCM.

Materials and methods:

A retrospective review of 3 FNA cases of metastatic SCM was performed. The cases were collected from the University of Pittsburgh Medical Center, Pittsburgh, PA, USA (n=1) and University of Michigan, Ann Arbor (n=2), including FNA samples (n=2) and a core needle biopsy with touch preparation (n=1). All cases were performed by radiologists under ultrasound or computerized tomography (CT) guidance. Rapid onsite evaluation (ROSE) was performed in all cases. For 2 cases evaluated by FNA, air dried Diff-Quik stained and alcohol-fixed Papanicolaou stained direct smears were prepared from each pass and cell blocks were prepared. For the one case evaluated by core biopsy, air dried Diff-Quik stained imprint slides were prepared and the core submitted in 10% buffered formalin. Aspirated material was collected for ancillary studies including flow cytometry and molecular profiling. Immunohistochemistry (IHC) was performed on cell block sections and the core biopsy in all 3 cases with appropriate controls.

The available data collected included clinical presentation, patient demographics, radiology findings, cytology and surgical pathology diagnoses, and follow-up information. Cytomorphology details including specimen cellularity, pattern, cell size/shape, presence of melanin pigment, cytoplasm and nuclear features, and background findings were recorded. All cases were re-reviewed to confirm the diagnoses. Flow cytometry was not performed for any case. The results of available ancillary tests (IHC and molecular) were also documented.

RESULTS

Clinical Findings

All patients were elderly with an average age of 77 years (range of 69-85 years). The clinical presentation, radiologic and demographic findings are summarized in **Table 1**. A clinical diagnosis of melanoma was not suspected in two of the three cases. Clinical presentations were as follows:

Case A: A 77-year-old, previously healthy man with no known history of malignancy presented to the emergency room with a chief complaint of abdominal pain. A CT scan of his abdomen showed a large lesion in the left lower quadrant and a pancreatic mass. Ultrasound-guided FNA of the left lower quadrant mass was performed.

Case B: An 85-year-old woman presented with a palpable posterolateral abdominal wall mass and no known history of malignancy. A needle core biopsy with touch preparations was performed.

Case C: A 69-year-old woman with a remote history of smoking, and a prior history of a right arm MM with epithelioid and nevoid features 10 years ago, presented with a 6 month history of cough and hemoptysis. Bronchoscopy evaluation at that time revealed *Aspergillus fumigatus* in bronchial washing cultures, and a CT scan of her chest revealed a large right lower lobe lung mass which was initially suspected to be an aspergilloma. However, the lesion grew from 8.1 cm to 13.7 cm over a period of 5 months by CT imaging, and the patient accordingly underwent an endobronchial ultrasound-guided FNA of the lung mass.

Cytopathology Findings

Rapid Onsite Evaluation (ROSE) diagnoses: Case A: Adequate: positive for neoplasm, favor neuroendocrine neoplasm. Case B: Adequate: positive for small round blue cell tumor. Case C: Adequate: atypical cells present

Cytomorphology: The cytology aspirate smears (n=2) and touch preparation (n=1) were highly cellular. The cytomorphologic spectrum of findings in the cases is summarized in **Table 2**.

Cytologic features of the aspirate from Case A and touch preparation of Case B were similar (**Figures 1&2**), both showing a monomorphic population of dispersed small round cells with scant to absent cytoplasm and a high nuclear:cytoplasmic ratio. A rosette-like or acinar-like arrangement of the tumor cells was notable in Case A. In addition, Case A demonstrated more typical melanoma features focally, including rare intra-nuclear pseudo-inclusions and a peritheliomatous growth pattern. Both cases showed occasional spindle and plasmacytoid cells. The needle core biopsy of Case B contained solid sheets of non-cohesive small round cells with scattered small blood vessels and prominent mitotic figures. Case C (**Figure 3**) was composed of small- to medium-sized cells with scant cytoplasm and eccentric to centrally located nuclei. Focal peritheliomatous growth pattern was noted on the cell block section from Case C. Rare cells had cytoplasmic vacuoles. In both FNA cases, cell block material showed a dispersed population of medium to small cells (Cases A and C). Lymphoglandular bodies, necrosis or a tigroid background were not present in any of these cases.

Ancillary Test Findings

As the diagnosis of melanoma was not suspected clinically in two of the cases and because of the small round cell morphology appreciated at ROSE, ancillary studies were required for definitive establishment of the diagnosis of SCM. A final diagnosis of melanoma with small cell features or small round cell morphology was given after confirmatory IHC performed in each case. All cases showed diffuse positivity for multiple melanocytic markers including SOX10 (3/3), Melan A (3/3), and HMB45 (2/2). S-100 was expressed in 1/2 cases. Neuroendocrine markers were equivocal where CD56 was interpreted to be positive in 2/2 cases examined, while synaptophysin was weakly expressed in 1/2 cases and chromogranin was expressed in 0/2 cases. TTF-1 was negative in both cases where this stain was performed (0/2). Pancytokeratin was not expressed in any case (0/3). An extended panel of IHC markers used in working up the differential diagnoses of small round blue cell tumors was also performed including CD99 (1/2), desmin (0/2), myogenin (0/2), WT1 (0/2), and CD45 (0/2).

Fluorescent in-situ hybridization studies were performed for Case A and were negative for SYT and EWSR1 translocation. Molecular testing performed on the cell block material showed a NRAS p.Q61R mutation (Case A) and BRAF c1799T>A V600E (Case C). Molecular studies were not performed for Case B.

Patient Outcomes

None of the patient had follow-up surgical resection due to presence of metastatic disease.

Case A: This patient underwent an endoscopic ultrasound-guided FNA of their pancreatic mass 2 weeks later that showed similar cytology features of SCM. One month later, the patient was found to have widespread metastatic disease involving bilateral thighs, liver and lung. A primary

site for this patient's MM was not established. This patient was alive at 8 months follow-up and being treated with a combination of anti-PD1 and tyrosinase kinase inhibitor therapy. **Case B:** This patient was unfortunately lost to follow-up. **Case C:** This patient underwent treatment for metastatic melanoma with one cycle of ipilimumab plus nivolumab, before transitioning to palliative radiation. She died of MM after 6 months.

DISCUSSION

SCM is a rare variant of MM with a vertical growth pattern that is characterized by sheets of small monomorphic cells with round to oval nuclei and high nuclear:cytoplasmic ratio, mimicking other small round blue cell tumors (SRBCT). This variant was first described in 1965 by Reed et al, who described 12 cases of MM with undifferentiated lymphoblastic morphology arising from giant congenital nevi.¹¹ In children, SCM are believed to arise either from congenital nevi or de novo.¹² In adults, the pathogenesis of this variant is largely unknown. SCM affects the trunk area and has been described at both mucosal and cutaneous sites as well.¹³⁻¹⁶ In addition, a few case reports have described individual cases of metastatic SCM involving visceral sites such as the ovary, stomach and pleura.¹⁷⁻²⁰

The features of SCM have been infrequently described in the cytology literature. To the best of our knowledge, there is only one case report in the cytology literature specifically describing a case of metastatic SCM, which presented as multi-centric disease involving the anterior mediastinum, lung and pleura.¹⁰ An FNA of the anterior mediastinal mass showed discohesive small round cells with aberrant expression of CD43. Based this finding this case was initially mistaken for lymphoma on cytology. That patient required an open lung biopsy procedure for a

definitive diagnosis. Only a few other cytology studies have described some degree of small cell morphology in metastatic MM cases.^{5,21-23}

The differential diagnosis for SCM is similar to that of other SRBCTs encountered in cytologic preparations, including lymphoma, alveolar rhabdomyosarcoma, Ewing sarcoma, high grade synovial sarcoma and neuroblastoma in pediatric to adolescent patients, and high grade malignant peripheral nerve sheath tumor, Ewing-like sarcomas (*CIC-DUX4*, *BCOR* associated sarcomas), small cell neuroendocrine carcinoma, Merkel cell carcinoma, and germ cell tumors in addition to others in adults. That being said, a complete discussion of cytologic differential of SRBCTs is beyond the scope of this article. **Table 3** summarizes an IHC panel that can be useful for working up a suspected SCM case.²⁴ Based on the anatomic location, the differential diagnosis for our cases included metastatic pancreatic neuroendocrine tumor (NET) (Case A), metastatic carcinoma versus lymphoma (Case B), and small cell neuroendocrine carcinoma (Case C), as well as other mesenchymal SRBCTs (e.g. Ewing sarcoma). IHC performed on cell block material was crucial for establishing the correct diagnoses. For each case, tumor cells expressed at least two melanocytic biomarkers including SOX10 and Melan A in all 3 cases. Since the patient in Case A had a prior history of pancreatic mass and a left lower quadrant abdominal mass showing small round cells with prominent acinar-like or rosette-like architecture and rare plasmacytoid cells to exclude a NET a panel of neuroendocrine markers was performed. The tumor cells in this case were diffusely positive for CD56, and rare cells were weakly positive for synaptophysin, but were completely negative for chromogranin. For Case B, lymphoid IHC markers were negative. In Case C, the given the tumor location was lung and the patient had a remote history of smoking, this raised the possibility of small cell carcinoma.

However, for this Case C the tumor cells were all negative by IHC for pan-cytokeratin, TTF-1, synaptophysin, and chromogranin.

None of the three cases showed classic cytologic features diagnostic of a conventional melanoma, such as dispersed polygonal to epithelioid cells with eccentric nuclei, conspicuous macro-nucleoli, intra-nuclear pseudo-inclusions, intracellular cytoplasmic melanin, bi-nucleated and/or multi-nucleated cells, or associated melanophages. Case A did show a rare intra-nuclear inclusion. A peritheliomatous growth pattern,²⁵ a reported cytologic clue to metastatic melanomas was identified in two cases. The most common differential diagnosis in prior cytology studies of SCM was lymphoma. However, lymphoglandular bodies were not present in any of the cases examined. Molecular studies performed on cytology material in our case series showed that BRAF c1799T>A V600E mutation (Case C) and NRAS p.Q61R mutation (Case A) were present, two of the most common molecular alterations reported in conventional MM.²⁶ The patient in Case A was treated with targeted therapy using a combination of anti-PD1 and a tyrosine kinase inhibitor. There are too few cases in this limited series to comment on the biologic behavior of these SCMs.

Literature review shows conflicting evidence in terms of prognosis of SCM. Barnhill et al concluded that a melanoma showing a vertical growth pattern and small cell morphology was an independent poor prognostic factor in their study of pediatric melanomas, whereas Karkham et al found a similar prognosis to conventional MM.^{27,28} A study by Cuellar FA et al demonstrated that SCM morphology is more likely to be associated with sentinel node involvement.²⁹

In conclusion, diagnosing metastatic SCM at unusual sites by cytology is a challenging task, especially in patients without a prior history of melanoma. In our case series, two of the three patients presented with metastatic disease at the time of diagnosis and an unknown primary. Our study highlights the cytomorphology of SCM that differs from conventional MM in many aspects. This rare variant of melanoma is characterized by small round blue cells lacking intracytoplasmic melanin, macro-nucleoli, bi-nucleation and multinucleation. Previously undescribed cytologic features outlined herein is a prominent acinar-like or rosette like morphology, mimicking neuroendocrine tumors in 2 of our cases. In addition, SCM can show nuclear molding mimicking small cell neuroendocrine carcinoma. Achieving a correct cytologic diagnosis of SCM requires an integrated clinicopathologic approach utilizing extensive histologic analysis, carefully selected ancillary studies, such as IHC and molecular diagnostics and a high-index of suspicion.

REFERENCES:

1. Hall BJ, Schmidt RL, Sharma RR, Layfield LJ. Fine-needle aspiration cytology for the diagnosis of metastatic melanoma: systematic review and meta-analysis. *Am J Clin Pathol.* 2013;140:635–642.
2. Chen L, Raza AS, Simental RG, Iverson KT, Cobb CJ. Cytoplasmic vacuoles: clue in the fine-needle aspiration diagnosis of melanoma. *Diagn Cytopathol.* 2014;42:143–146.
3. Gupta SK, Rajwanshi AK, Das DK. Fine needle aspiration cytology smear patterns of malignant melanoma. *Acta Cytol.* 1985;29:983–988.
4. Saji A, McGrath CM, Skovronsky D, Yu GH. Cytomorphologic features of fine-needle aspiration of metastatic and recurrent melanoma. *Diagn Cytopathol.* 2002;27:286–290.
5. Morrison C, Young DC, Wakely PE Jr. Cytopathology of malignant melanoma in conventional and liquid-based smears. *Am J Clin Pathol.* 2002 Sep;118(3):435-41.
6. Voit C, Kron M, Schafer G, et al. Ultrasound-guided fine needle aspiration cytology prior to sentinel lymph node biopsy in melanoma patients. *Ann Surg Oncol.* 2006;13:1682–1689.
7. Lindsey KG, Ingram C, Bergeron J, Yang J. Cytological diagnosis of metastatic malignant melanoma by fine-needle aspiration biopsy. *Semin Diagn Pathol.* 2016 Jul;33(4):198-203
8. Cota C, Saggini A, Lora V, Kutzner H, Rütten A, Sangüeza O, Requena L, Cerroni L. Uncommon Histopathological Variants of Malignant Melanoma: Part 1. *Am J Dermatopathol.* 2019 Apr;41(4):243-263
9. Saggini A, Cota C, Lora V, Kutzner H, Rütten A, Sangüeza O, Requena L, Cerroni L. Uncommon Histopathological Variants of Malignant Melanoma. Part 2. *Am J Dermatopathol.* 2019 May;41(5):321-342.

10. Buehler D, Waknitz M, Rehrauer W, Ranheim E, Selvaggi S. Small cell variant of malignant melanoma masquerading as lymphoma on fine-needle aspiration cytology: a case report. *Diagn Cytopathol.* 2012 Jul;40(7):619-23
11. Reed WB, Becker SW Sr, Becker SW Jr, Nickel WR. Giant pigmented nevi, melanoma, and leptomeningeal melanocytosis: a clinical and histopathological study. *Arch Dermatol.* 1965 Feb; 91(2):100–19.
12. Hendrickson MR, Ross JC. Neoplasms arising in congenital giant nevi: morphologic study of seven cases and a review of the literature. *Am J Surg Pathol.* 1981 Mar; 5(2): 109–35.
13. Hanson IM, Banerjee SS, Menasce LP, Prescott RJ. A study of eleven cutaneous malignant melanomas in adults with small-cell morphology: emphasis on diagnostic difficulties and unusual features. *Histopathology.* 2002 Feb; 40(2): 187–95.
14. Kossard S, Wilkinson B. Small cell (naevoid) melanoma: a clinicopathologic study of 131 cases. *Australas J Dermatol.* 1997 Jun;38 Suppl 1:S54-8
15. Blessing K, Grant JJ, Sanders DS, Kennedy MM, Husain A, Coburn P. Small cell malignant melanoma: a variant of naevoid melanoma. Clinicopathological features and histological differential diagnosis. *J Clin Pathol.* 2000 Aug; 53(8): 591–5.
16. Abbes I, Sassi S, Dhouib R, Mrad K, Driss M, Limaiem F, et al. Small cell malignant melanoma: an unusual morphologic variant. *Pathologica.* 2007 Dec; 99(6): 431–3.
17. Young RH, Scully RE. Malignant melanoma metastatic to the ovary. A clinicopathologic analysis of 20 cases. *Am J Surg Pathol.* 1991 Sep; 15(9): 849–60.
18. Fitzgibbons PL, Martin SE, Simmons TJ. Malignant melanoma metastatic to the ovary. *Am J Surg Pathol.* 1987 Dec; 11(12): 959–64.

19. Attanoos R, Griffiths DF. Metastatic small cell melanoma to the stomach mimicking primary gastric lymphoma. *Histopathology*. 1992 Aug;21(2):173–175.
20. Ronen S, Czaja RC, Ronen N, Pantazis CG, Iczkowski KA. Small Cell Variant of Metastatic Melanoma: A Mimicker of Lymphoblastic Leukemia/Lymphoma. *Dermatopathology (Basel)*. 2019 Nov 27;6(4):231-236.
21. Perry MD, Gore M, Seigler HF, Johnston WW. Fine needle aspiration biopsy of metastatic melanoma. A morphologic analysis of 174 cases. *Acta Cytol* 1986;30:385–396.
22. Gupta RK, Lallu S. Cytodiagnosis of amelanotic metastatic malignant melanoma: An immunocytochemical study. *Diagn Cytopathol* 1997;16:238–241.
23. Nasiell K, Tani E, Skoog L. Fine needle aspiration cytology and immunocytochemistry of metastatic melanoma. *Cytopathology* 1991; 2:137–147.
24. Dinehart MS, Dinehart SM, Sukpraprut-Braaten S, High WA. Immunohistochemistry utilization in the diagnosis of melanoma. *J Cutan Pathol*. 2020 May;47(5):446-450.
25. Upadhyay Baskota S, Monaco SE, Xing J, Pantanowitz L. Peritheliomatous pattern: A diagnostic clue for diagnosing metastatic melanoma in cytology. *Cancer Cytopathol*. 2020 Apr;128(4):260-268.
26. Yang K, Oak ASW, Slominski RM, Brożyna AA, Slominski AT. Current Molecular Markers of Melanoma and Treatment Targets. *Int J Mol Sci*. 2020 May 16;21(10):3535.
27. Barnhill RL, Flotte TJ, Fleischli M, Perez-Atayde A. Cutaneous melanoma and atypical Spitz tumors in childhood. *Cancer*. 1995 Nov;76(10):1833–45.
28. Kirkham N. Small cell melanoma. *Histopathology*. 2002 Feb;40(2):196–8.

29. Cuéllar FA, Vilalta A, Rull R, et al. Malignant Melanoma Group. Small cell melanoma and ulceration as predictors of positive sentinel lymph node in malignant melanoma patients.

Melanoma Res. 2004 Aug;14(4):277-82.

FIGURE LEGENDS:

Figure 1: Case A (a) Cellular aspirate showing a dispersed population of small round blue cells with high nuclear:cytoplasmic ratio and a bloody background. Note the rosette-like or acinar arrangement in some of the cell clusters. (Diff Quik stain, Magnification 200x). (b) Cell block showing a similar dispersed population of small round tumor cells with hyperchromatic nuclei (Hematoxylin and Eosin stain, Magnification x400) with diffuse cytoplasmic positivity for S-100 (c) and nuclear SOX-10 expression (d).

Figure 2: Case B (a) Touch preparation showing a dispersed population of small round cells with minimal cytoplasm and a high nuclear:cytoplasmic ratio. Note the presence of occasional plasmacytoid cells. (Diff Quik stain, Magnification 400x). (b) Corresponding core biopsy showing SCM comprised of sheets of discohesive small round blue cells (Hematoxylin and Eosin stain, Magnification x400) and (c) showing diffuse nuclear positivity for SOX-10.

Figure 3: Case C (a) FNA aspirate showing a cohesive cluster of medium-sized tumor cells with scant to moderate cytoplasm, occasional cytoplasmic vacuoles, and an eccentric to central nucleus. (Diff Quik stain, Magnification 400x). (b) Note the smooth nuclear contours of tumor cells with prominent molding (Papanicolaou stain, Magnification x 400). (c) Cell block section showing a dispersed population of round to epithelioid melanoma cells (Hematoxylin and Eosin stain, Magnification x400) with diffuse cytoplasmic positivity for Melan-A (d).

Author Manuscript

Table 1: Demographics, clinical presentation and imaging of cases diagnosed as small cell melanoma

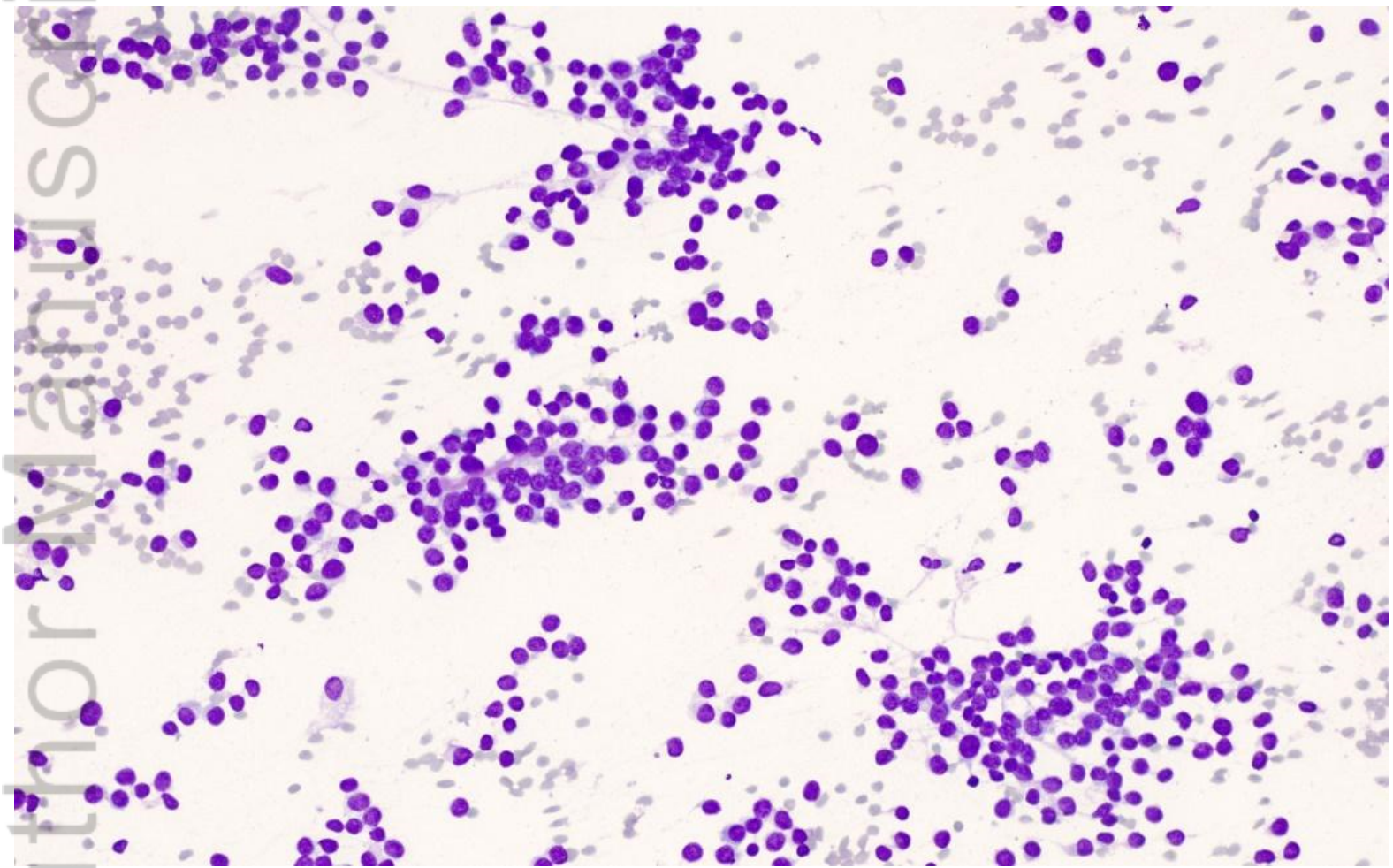
Case	Age/gender	Clinical presentation	Anatomic site of tumor	Imaging findings	Prior diagnosis of melanoma	Multi-centric presentation	Other findings
A	77 year/Male	Abdominal pain	Left lower quadrant of abdominal mass	CT abdomen: Large mass in left lower quadrant of abdomen and pancreatic mass	No	Yes	None
B	85 year/Female	Palpable postero-lateral abdominal wall mass	Abdominal wall mass	Not available	No	No	None
C	69 year/Female	Hemoptysis	Lung mass	CT chest: Large right lower lobe lung mass	Yes, 10 year prior melanoma with epithelioid and nevoid features of right arm skin, Clark level IV, depth of invasion 2.3 mm	No	None

Table 2: Spectrum of cytomorphologic findings in small cell melanoma cases

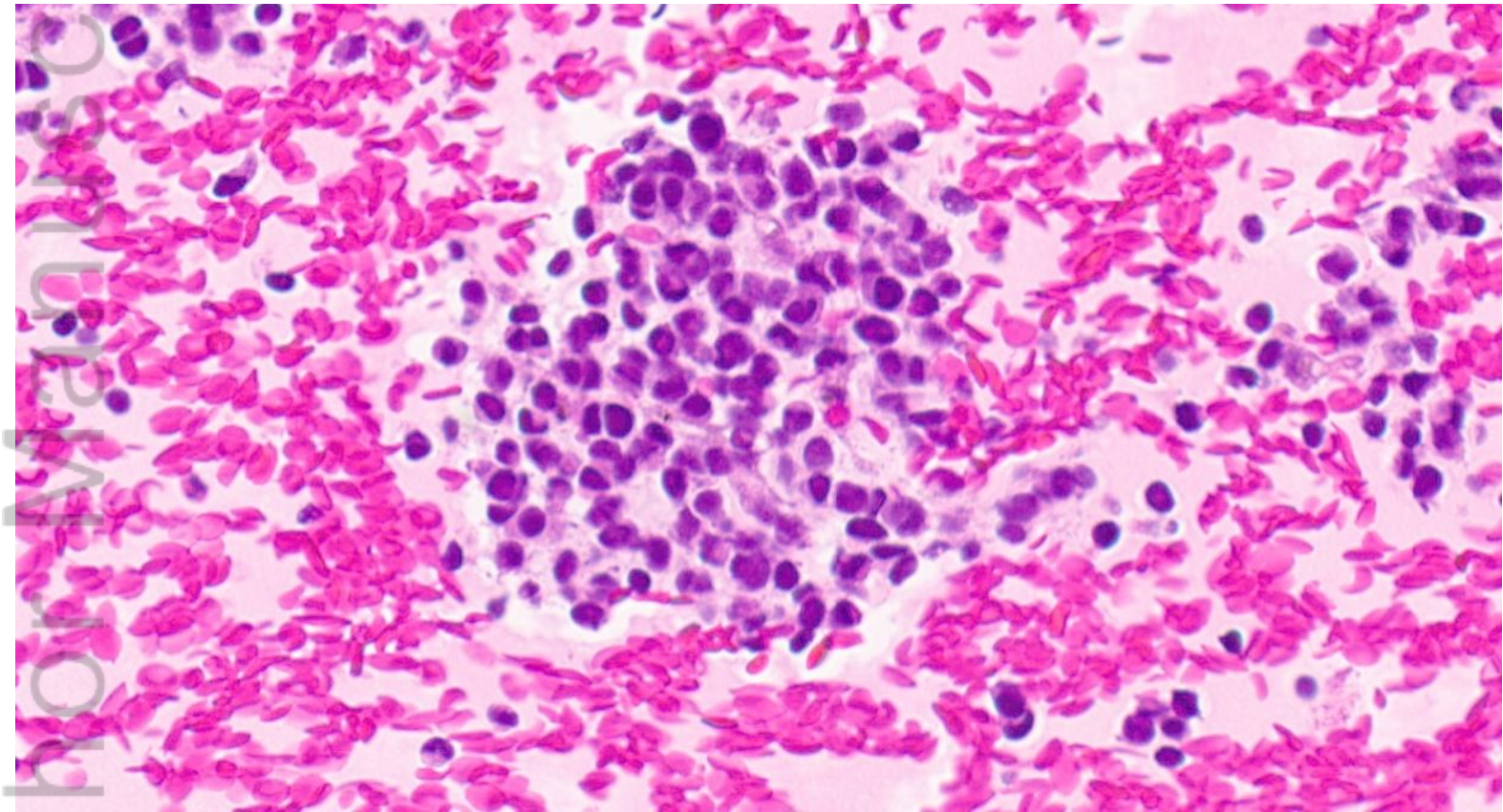
Cytomorphology	Case A	Case B	Case C
Cellularity	Highly cellular	Highly cellular	Highly cellular
Cell arrangement	Small dispersed isolated cells	Small dispersed isolated cells	Predominantly dispersed isolated cells
Cell clusters	Occasional loose clusters	Occasional loose clusters	Occasional loose clusters
Cell size	Mostly small to medium	Mostly small to medium	Medium to small
Cell shape	Round to oval	Round	Round
Cell cytoplasm	Scant to absent	Absent to minimal	Scant
Cytoplasmic borders	Indistinct	Indistinct	Distinct
Cytoplasmic vacuoles	-	-	+
Bizarre cells	-	-	-
N/C ratio	High	High	High
Nuclear contour	Smooth to focal irregular	Smooth to focal irregular	Irregular to smooth
Chromatin pattern	Condensed	Condensed	Condensed
Nucleoli	Inconspicuous to occasional small	Inconspicuous to occasional small	Inconspicuous to occasional small
Intra-nuclear pseudo-inclusions	Rare	-	-
Bi-nucleation/multi-nucleation	-	-	-
Nuclear placement	Central	Central	Central to eccentric
Nuclear molding	-	-	+(focal)
Mitotic figures	+	+	+
Melanin pigment	Rare, extracellular	-	-
Melanophages	-	-	-
Apoptotic debris	-	-	-
Peritheliomatous pattern	+(focal)	-	+(focal)
Acinar formation	++	+	-
Other	Occasional spindle to plasmacytoid cells	Occasional spindle to plasmacytoid cells	Epithelioid cells

Table 3: Immunohistochemistry work-up in the differential diagnosis small cell melanoma

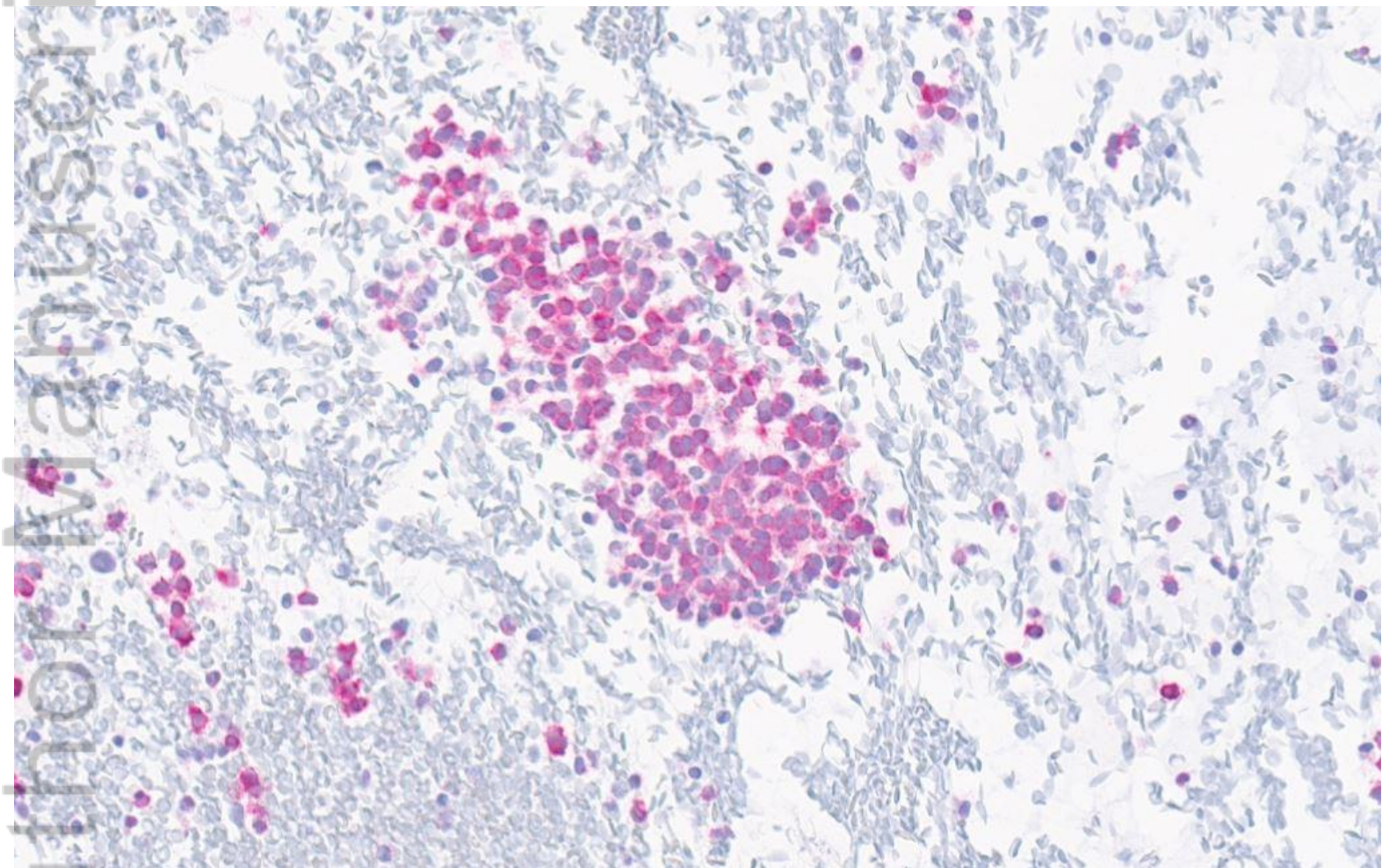
	Cytokeratin and/or epithelial membrane antigen	CD-45	SOX-10	CD-99	Neuroendocrine markers	Desmin	WT-1	Other
Small cell melanoma	-	-	+	-	-/+	-	-	HMB-45, S-100, MART-1, Tyrosinase
Lymphoma	-	+	-	+/-	-	-	-	B or T-cell markers
Small cell neuroendocrine carcinoma	+	-	-	-	+	-	-	RB loss, p53 overexpression, TTF-1
Merkel cell carcinoma	+(dot-like)	-	-	-	+	-	-	Neurofilament+, Merkel cell polyomavirus antibody
Small cell osteosarcoma	-	-	-	+/-	-	-	-	SATB2, osteocalcin
Mesenchymal chondrosarcoma	-	-	-	+	-	-	-	SOX-9, S-100 (chondrocytes only)
Solid alveolar rhabdomyosarcoma	-	-	-	-	+/-	+	-	Myogenin, MyoD1
Desmoplastic small round cell tumor	+	-	-	-(few +)	-	+(dot-like)	+	-
Ewing sarcoma	- (rare+)	-	-	+(diffuse membranous)	+/-	-	-	NKX2.2
CIC-re-arranged sarcoma	- (rare+)	-	-	-/+ (20%)	-	-	+	ETV4
BCOR-re-arranged sarcoma	- (rare+)	-	-	+/-	-	-	-	BCOR, TLE, SATB2
Neuroblastoma	-	-	-	-	+(Synaptophysin)	-	-	PHOX2B
Blastemal predominant Wilm's tumor	+	-	-	-	-	+	+	



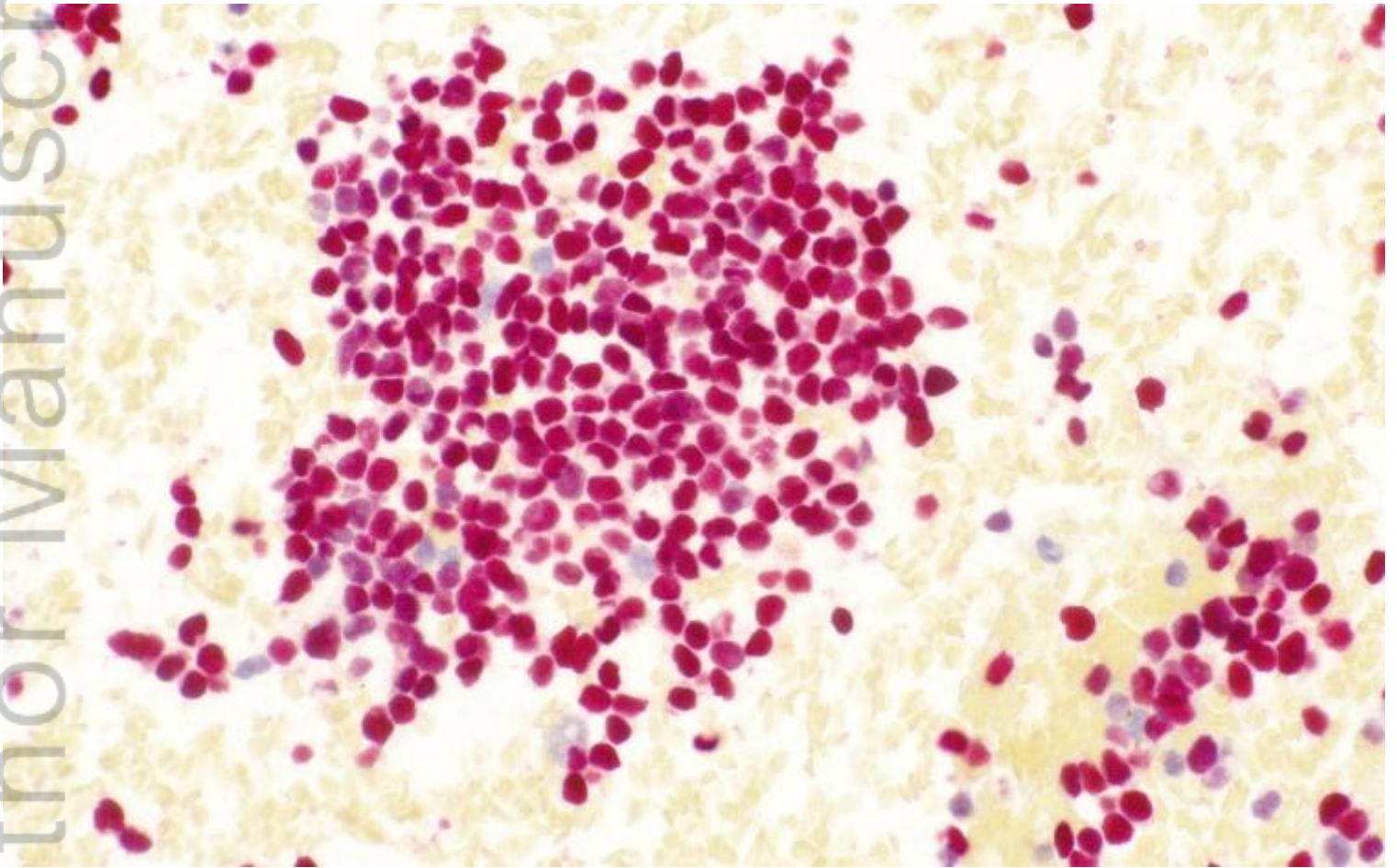
DC_24889_DC_24889_Figure 1a.tif



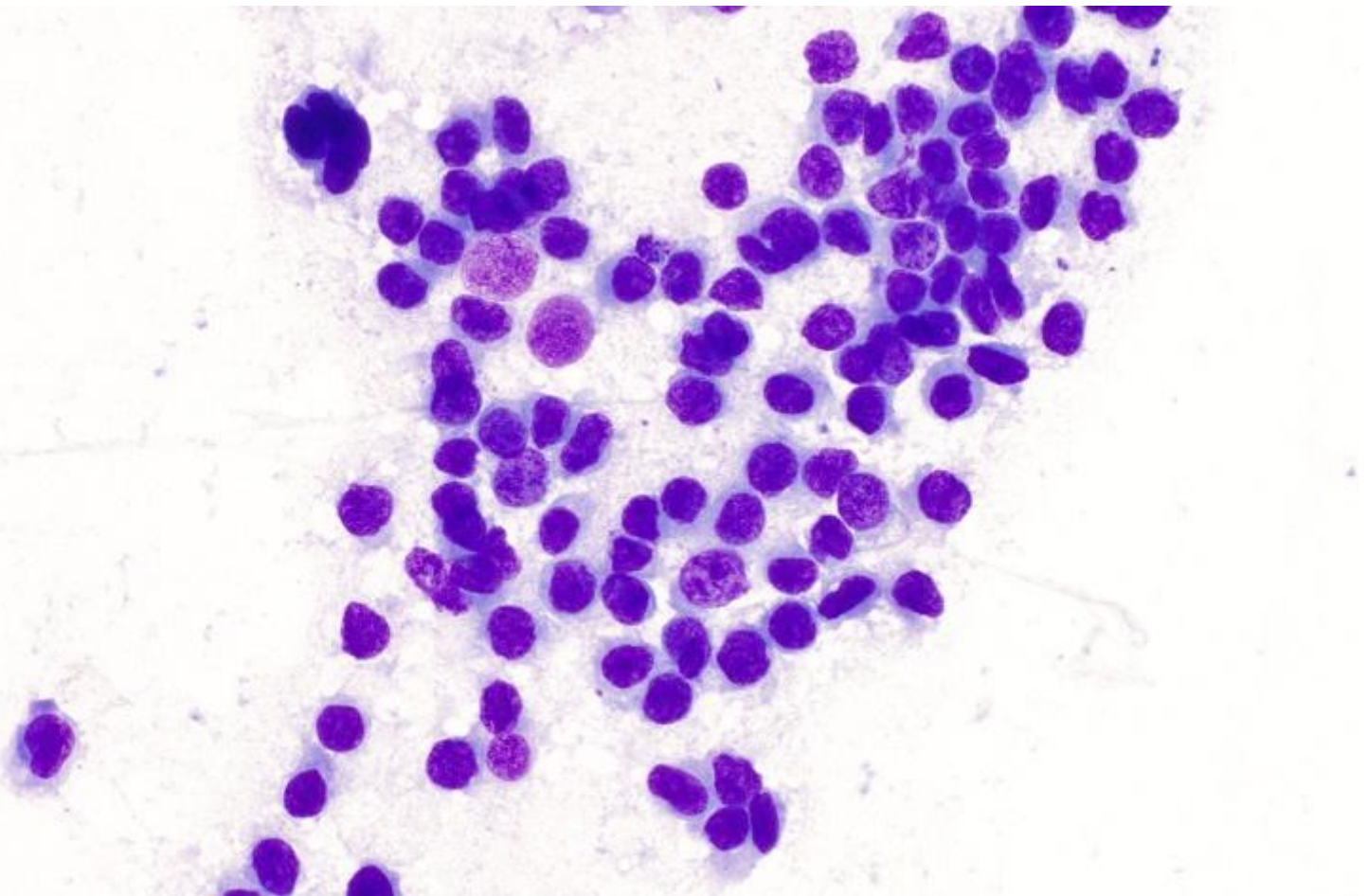
DC_24889_DC_24889_Figure 1b.tif



DC_24889_DC_24889_Figure 1c.tif

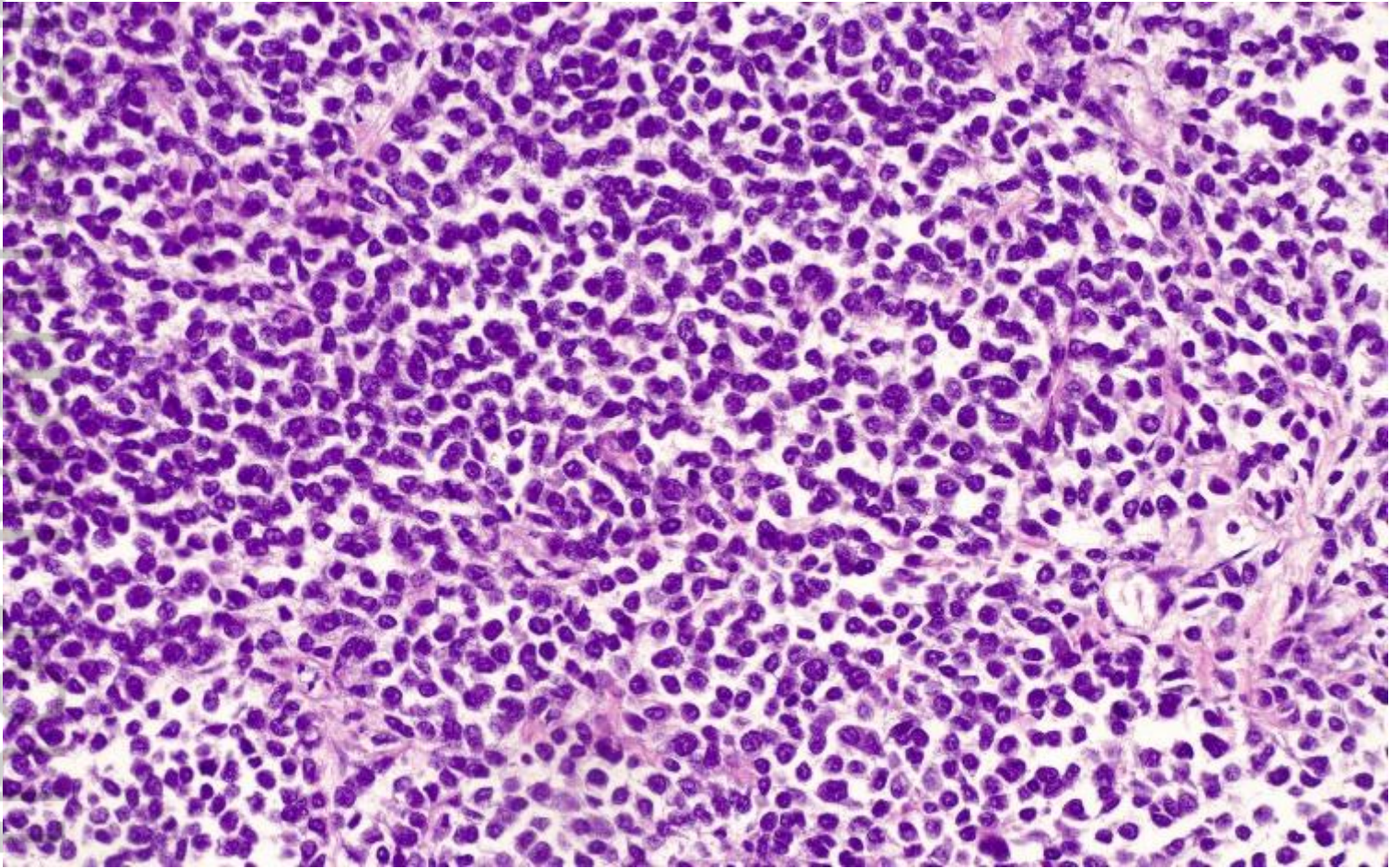


DC_24889_DC_24889_Figure 1d.tif

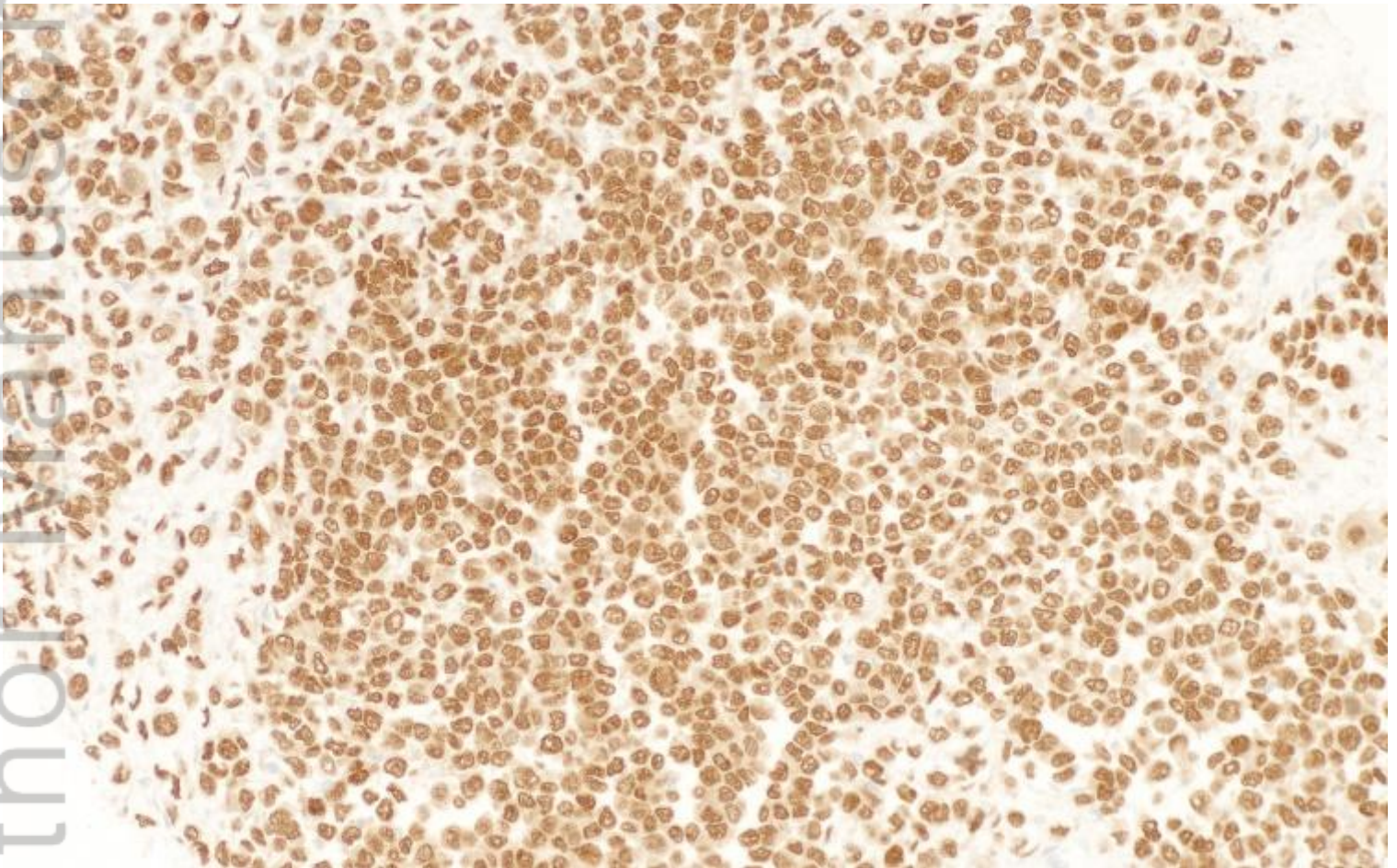


DC_24889_DC_24889_Figure 2a.tif

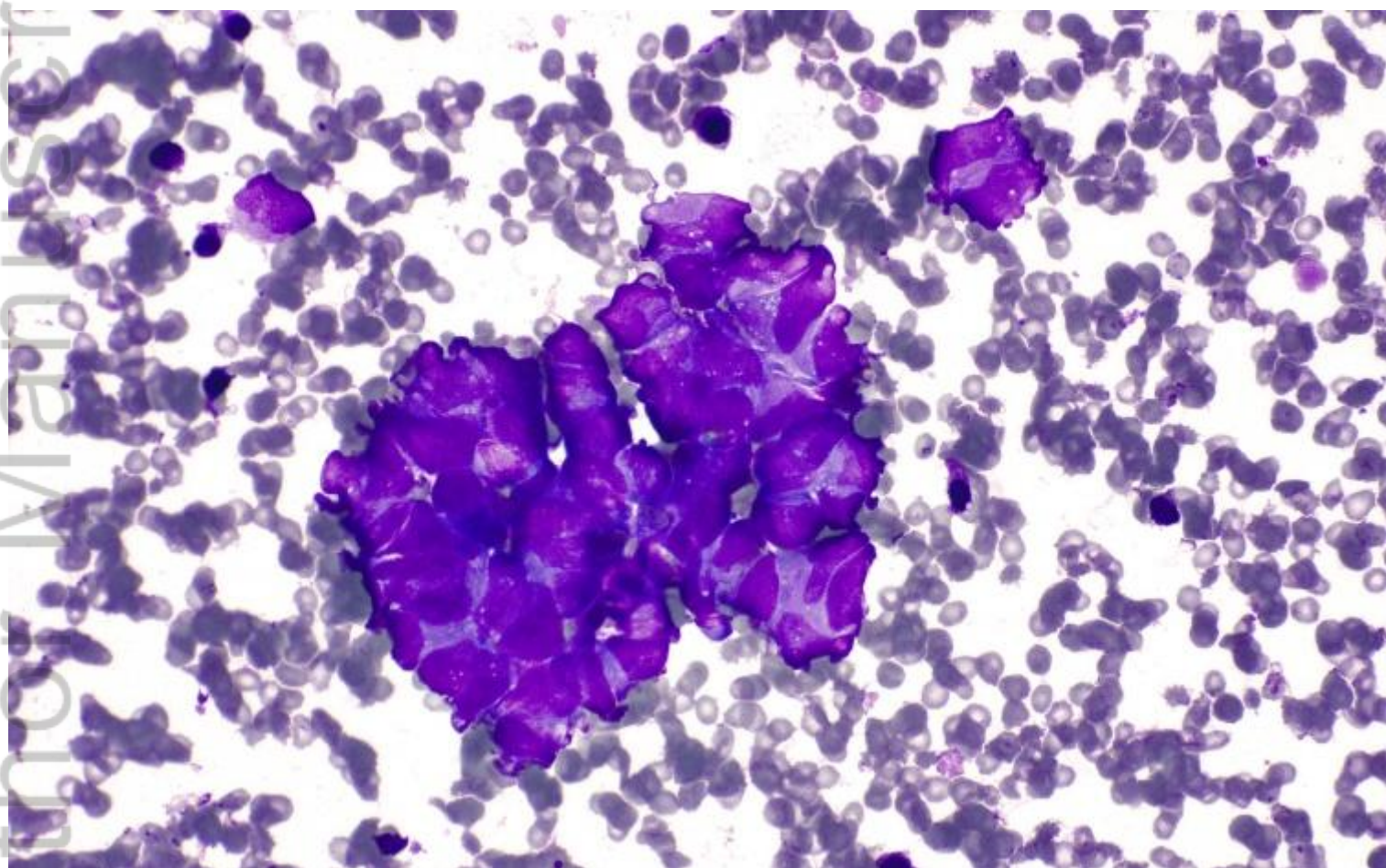
Aut
Man
ipt



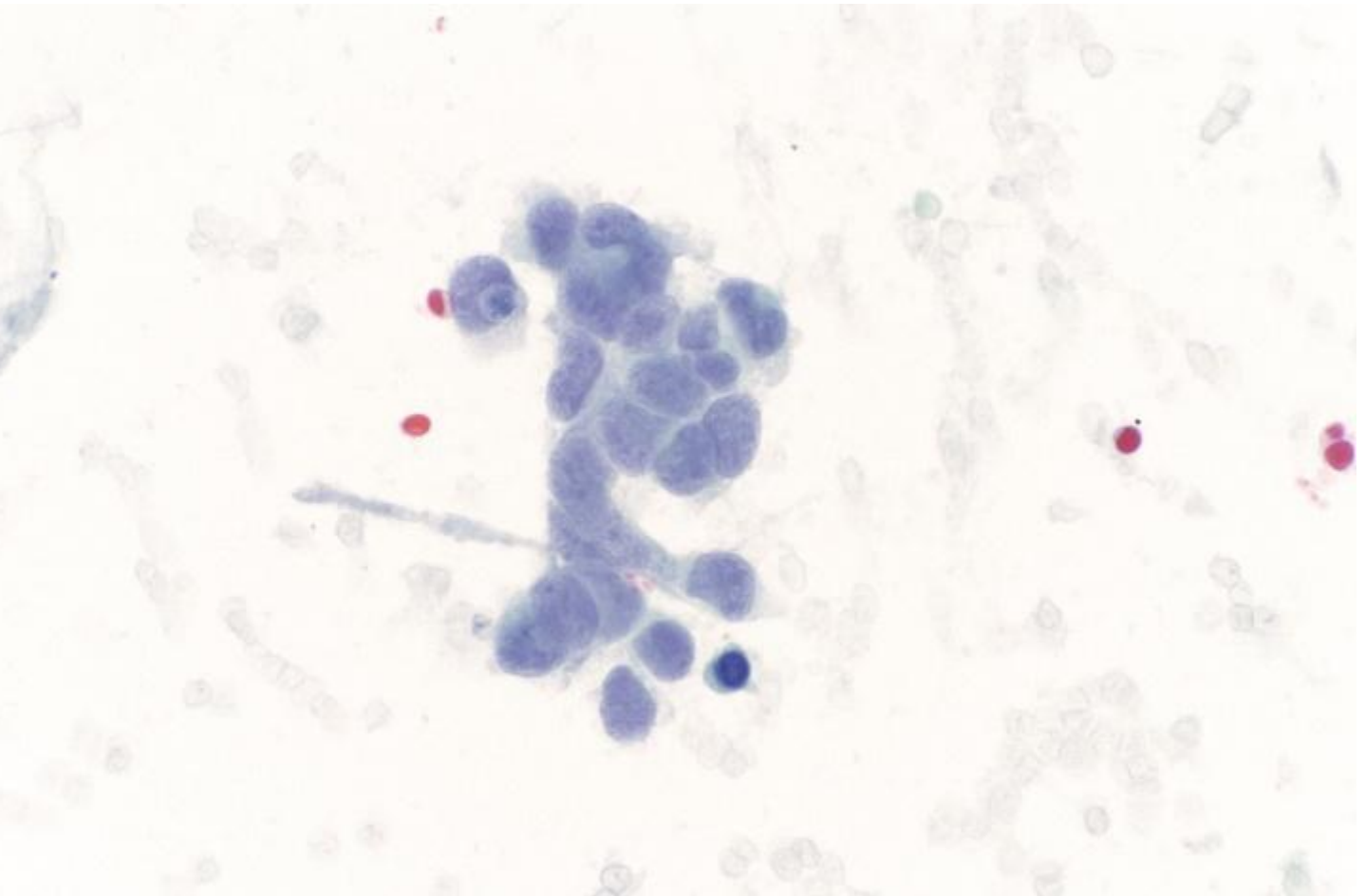
DC_24889_DC_24889_Figure 2b.tif



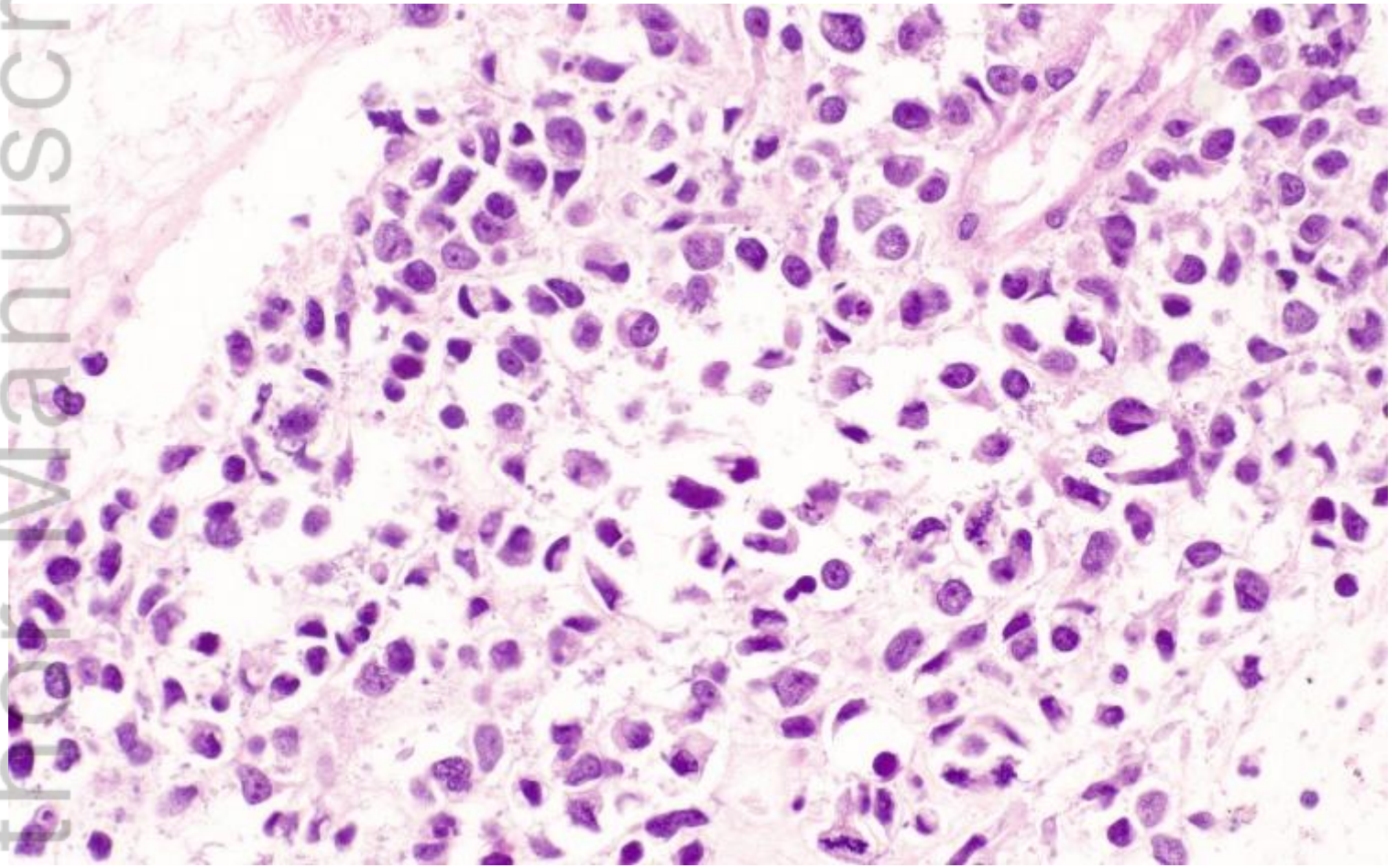
DC_24889_DC_24889_Figure 2c.tif



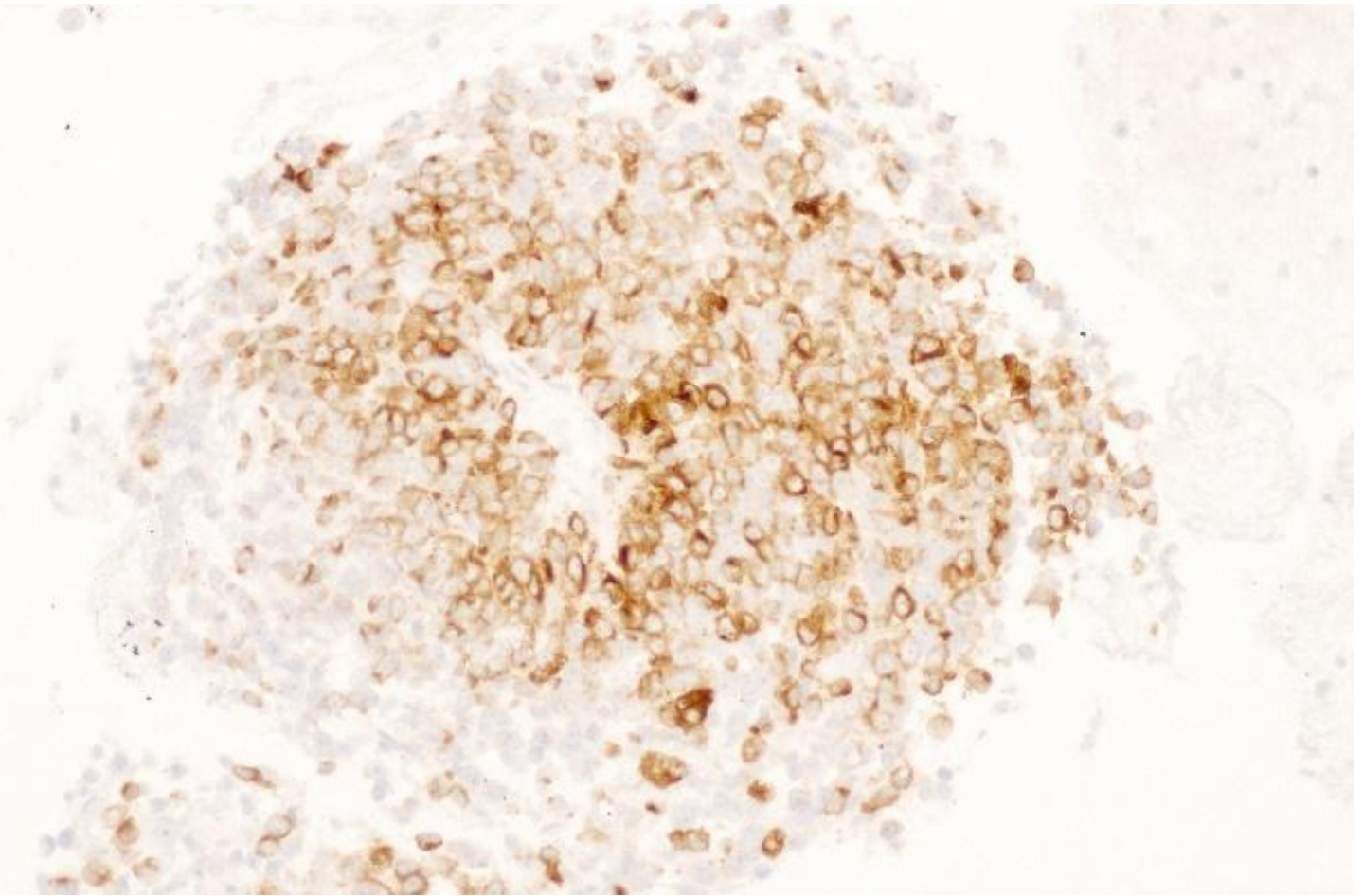
DC_24889_DC_24889_Figure 3a.tif



DC_24889_DC_24889_Figure 3b.tif



DC_24889_DC_24889_Figure 3c.tif



DC_24889_DC_24889_Figure 3d.tif