

DR SAMI ALASFAR (Orcid ID : 0000-0001-7154-0889)
DR PETER PHILIP REESE (Orcid ID : 0000-0003-1440-069X)
DR SUMIT MOHAN (Orcid ID : 0000-0002-5305-9685)
DR MONA D DOSHI (Orcid ID : 0000-0003-2510-1951)
DR ISAAC E HALL (Orcid ID : 0000-0003-0885-8450)
MS HEATHER THIESSEN PHILBROOK (Orcid ID : 0000-0003-2067-0514)
MR. YAQI JIA (Orcid ID : 0000-0002-1738-5475)
MR. DARREN EDWARD STEWART (Orcid ID : 0000-0002-6764-4842)
DR CHIRAG PARIKH (Orcid ID : 0000-0001-9051-7385)

Article type : Original Article

Trends in the Procurement and Discard of Kidneys from Deceased Donors with Acute Kidney Injury

Running Title: Transplantation Trends of AKI Kidneys

Author List:

Caroline Liu, MHS¹; Sami Alasfar, MD²; Peter P. Reese, MD, MSCE^{3,4}; Sumit Mohan, MD, MPH^{5,6}; Mona D Doshi, MD⁷; Isaac E. Hall, MD, MS⁸; Heather Thiessen-Philbrook, MMath²; Yaqi Jia, MPH²; Darren Stewart, MS⁹; Chirag R. Parikh, MD, PhD²

Affiliations:

1. Icahn School of Medicine at Mount Sinai, New York, NY

2. Division of Nephrology, Department of Medicine, Johns Hopkins University School of Medicine, Baltimore, MD

This is the author manuscript accepted for publication and has undergone full peer review but has not been through the copyediting, typesetting, pagination and proofreading process, which may lead to differences between this version and the [Version of Record](#). Please cite this article as [doi: 10.1111/AJT.16920](https://doi.org/10.1111/AJT.16920)

This article is protected by copyright. All rights reserved

3. Department of Biostatistics, Epidemiology and Informatics, Perelman School of Medicine, University of Pennsylvania, Philadelphia, PA
4. Renal-Electrolyte and Hypertension Division, Department of Medicine, Perelman School of Medicine, University of Pennsylvania, Philadelphia, PA
5. Division of Nephrology, Department of Medicine, New York-Presbyterian/Columbia University Irving Medical Center, New York, NY, USA.
6. Department of Epidemiology, Mailman School of Public Health, Columbia University, New York, NY, USA.
7. Department of Medicine, University of Michigan, Ann Arbor, Michigan, USA
8. Division of Nephrology and Hypertension, Department of Internal Medicine, University of Utah School of Medicine, Salt Lake City, UT
9. United Network for Organ Sharing, Research Department, Richmond, VA

ORCID:

Caroline Liu: 0000-0002-6684-026X; Sami Alasfar: n/a; Peter P Reese: [0000-0003-1440-069X](https://orcid.org/0000-0003-1440-069X); Sumit Mohan: [0000-0002-5305-9685](https://orcid.org/0000-0002-5305-9685); Mona D Doshi: [0000-0003-2510-1951](https://orcid.org/0000-0003-2510-1951); Isaac E Hall: [0000-0003-0885-8450](https://orcid.org/0000-0003-0885-8450); Heather Thiessen-Philbrook: [0000-0003-2067-0514](https://orcid.org/0000-0003-2067-0514); Yaqi Jia: n/a; Darren Stewart: [0000-0002-6764-4842](https://orcid.org/0000-0002-6764-4842); Chirag R Parikh: [0000-0001-9051-7385](https://orcid.org/0000-0001-9051-7385)

Corresponding author:

Chirag R. Parikh, MD, PhD
Director, Division of Nephrology
Johns Hopkins University School of Medicine
1830 E Monument St, Ste 416, Baltimore, MD 21287
E-mail: chirag.parikh@jhmi.edu

Abbreviations: AKI, acute kidney injury; BMI, body mass index; CKD, chronic kidney disease; CVA, cerebrovascular; DCD, donation after cardiac determination of death; ECD, expanded criteria donor; HCV, hepatitis C virus; HRSA, Health Resources and Services Administration; IQR, interquartile range; ITS, interrupted time series; KAS, Kidney Allocation System; KDIGO, Kidney Disease: Improving Global Outcomes; KDPI, kidney donor profile index; KDRI, kidney donor risk index; OPO, organ procurement organization; OPTN, Organ Procurement and Transplantation; SCD, standard criteria donor; SCr, serum creatinine; SD, standard deviation; STAR, Standard Transplant Analysis and Research; UNOS, United Network for Organ Sharing.

Abstract word count: 200 (200 limit)

Manuscript word count: 3544

Abstract

Kidney allocation trends from deceased donors with acute kidney injury (AKI) have not been characterized since initial kidney donor profile index (KDPI) reporting in 2012 and its use under the revised kidney allocation system (KAS) in 2014. We conducted a retrospective analysis of U.S. registry data to characterize kidney procurement and discard trends in deceased donors with AKI, defined by $\geq 50\%$ or ≥ 0.3 mg/dL (≥ 4.0 mg/dL or $\geq 200\%$ for stage 3) increase in terminal serum creatinine from admission. From 2010 to 2020, 172,410 kidneys were procured from 93,341 deceased donors 16 years or older. 34,984 kidneys were discarded (17,559 from AKI donors). The proportion of stage 3 AKI donors doubled from 6% (412/6841) in 2010 to 12% (1365/11493) in 2020. Procurement of stage 3 AKI kidneys increased from 51% (423/824) to 80% (2183/2730). While discard of stage 3 AKI kidneys increased from 41% (175/423) in 2010 to 44% (960/2183) in 2020, this increase was not statistically significant in interrupted time-series analysis following KAS implementation (slope difference -0.41 (-3.22, 2.4), and level change 3.09 (-6.4, 12.6)). In conclusion, the absolute number of stage 3 AKI kidneys transplanted has increased. Ongoing high discard rates of these kidneys suggest opportunities for improved utilization.

Word Count: 200

1. Introduction

The U.S. kidney transplantation system has evolved significantly within the past decade to improve allocation policies and address the growing kidney transplant waitlist. As of October 2020, the kidney transplant waitlist included 99,530 patients.¹ On March 26, 2012, the Kidney

Donor Profile Index (KDPI) was first introduced as a decision aid to transplant hospitals² and later implemented on December 4, 2014 as part of the Kidney Allocation System (KAS).³ KDPI is a continuous scale based on ten donor characteristics that improved upon the dichotomous standard/expanded criteria donor (SCD/ECD) classification and includes donor height, weight, terminal serum creatinine (SCr), cause of death, history of diabetes, history of hypertension, HCV-infection, race/ethnicity, and donation after cardiac vs. brain death status.³ Despite the move from a dichotomous measure to a continuous, surrogate measure of kidney quality, serious concerns persist that use of the KDPI has yielded unintended consequences in part due to its reliance on cross-sectional terminal kidney function data and inherent inability to account for fluctuations in deceased donor SCr prior to procurement.

Since KAS implementation, the overall deceased donor kidney discard rate has increased to approximately 20%.⁴ Further subgroup analyses showed that the discard rate of high KDPI kidneys previously considered SCD rose from 46.2% to 50.7% after KDPI implementation.^{5,6} This trend has been characterized by Bae et al. as the “labeling effect”⁵ where high KDPI kidneys may be difficult to convince patients and providers to accept despite comparable graft survival⁷ and better survival than remaining on the waitlist for a better kidney offer.⁸

Another group of kidneys that may have been impacted by the KDPI label are kidneys from deceased donors with acute kidney injury (AKI). The KDPI calculation uses the terminal SCr measurement at the time of organ procurement – a practice that fails to distinguish between transient SCr increases in deceased donors with AKI from those with preexisting chronic kidney disease (CKD).⁹ Although several studies^{10–14} have demonstrated good outcomes for recipients of kidneys from deceased donors with AKI, deceased donor AKI has been shown to be a strong predictor of discard for kidneys procured by five organ procurement organizations from 2010 to 2013.¹⁵ Nationally, 27% (4757/17468) of kidneys procured from deceased donors with AKI were discarded from 2010-2013.¹¹ We undertook this study to characterize temporal trends in the allocation of kidneys from deceased donors with AKI in the setting of KDPI introduction and KAS implementation.

2. Methods

2.1 Data Source and Study Cohort

We used 2010-2020 DonorNet data from the Organ Procurement and Transplantation (OPTN) system. OPTN registers deceased donors and communicates organ offers to transplant

hospitals with organ procurement organizations (OPOs). The OPTN system includes data submitted by OPTN members on all donors, wait-listed candidates, and transplant recipients in the US. The Health Resources and Services Administration (HRSA) of the US Department of Health and Human Services provides oversight to the activities of the OPTN contractor, the United Network for Organ Sharing (UNOS). Our initial study cohort consisted of a total of 103,123 deceased donors who had at least one solid organ procured for the purpose of transplantation between January 1, 2010 to December 31, 2020 (**Figure 1**).

From the available 103,123 deceased donors in the OPTN registry procured during this timeframe with valid SCr values (between 0.01 and 40 mg/dL), admission dates and aortic cross-clamp dates, we excluded donors with less than two SCr measurements between admission date and clamp date (n=1378). Donors younger than 16 years (n = 7251) or with both kidneys transplanted in the same recipient (n = 1153) were also excluded. This provided a final cohort of 93,341 deceased donors.

DonorNet provides encrypted UNOS donor identification numbers which were linked to the UNOS Standard Transplant Analysis and Research (STAR) files to link donors with their corresponding kidney recipients and OPTN-defined recipient outcomes. Serial SCr measurements from DonorNet have previously been validated using medical record-abstracted SCr from 5 OPOs.¹¹ KDPI was retrospectively calculated relative to all deceased kidney donors procured in 2010 in the OPTN database.^{16,17}

The study was approved by HRSA and the institutional review boards at participating institutions under a waiver of consent because deidentified data were used. The clinical and research activities reported herein are consistent with the Principles of the Declaration of Istanbul as outlined in the Declaration of Istanbul on Organ Trafficking and Transplant Tourism. We adhered to the ethics principles of the Declaration of Helsinki.

2.2 Defining Deceased-Donor AKI

We used data from DonorNet to obtain additional SCr measurements, beyond terminal SCr alone, to identify AKI. DonorNet provides serial SCr measurements during the hospitalization of most donors. If multiple SCr measurements were available within the same day, we used the lowest SCr level on the date of hospital admission and the highest SCr level on the date of organ procurement. Deceased-donor AKI was defined as $\geq 50\%$ increase in the terminal SCr level from admission or an absolute increase of at least 0.3 mg/dL (26.5 mmol/L). Stages of AKI were defined by KDIGO (Kidney Disease: Improving Global Outcomes) SCr criteria from admission to the terminal value as follows: stage 1 (≥ 0.3 mg/dL or 50% increase),

stage 2 ($\geq 100\%$ increase), and stage 3 (≥ 4.0 mg/dL or $\geq 200\%$ increase).¹⁸ Definitions of AKI and stages of AKI were irrespective of urine output or initiation of dialysis as these data were not available.

2.3 Statistical Analysis

Continuous variables were reported as the median (interquartile range [IQR]) or the mean (standard deviation [SD]). Differences in demographic characteristics, clinical characteristics, and kidney procurement characteristics were compared using Kruskal-Wallis or chi-square test for continuous and categorical variables, respectively. Differences were also reported as standardized mean differences.

We calculated the proportion of kidneys procured from deceased donors in our study cohort from January 1, 2010 to December 31, 2020. We then calculated the discard rate, defined as the percent of kidneys subsequently discarded after procurement for transplantation. We stratified trends in procurement and discard by stages of AKI. We used interrupted time series (ITS) with linear regression modeling to quantify 1) the estimated changes in the kidney procurement rate among potential donors referred to OPOs; and 2) the kidney discard rate associated with both the KDPI introduction and KAS implementation.¹⁹ The Durbin-Watson statistic was used to test for the presence of autocorrelation. Autocorrelation, and partial autocorrelation function plots were used to assess the order of autoregressive and moving average series. Plots of the rates did not reveal an effect of seasonality. Therefore, the models did not include seasonal adjustment. Final models included an error structure corresponding to an autoregression model of order 1. Interrupted Time Series analyses were adjusted for donor characteristics used in the KDPI calculation: Black race, hypertension, diabetes, cause of death, donation after cardiac death status, hepatitis C virus antibody seropositivity status, average age, and BMI. The following metrics were presented from the Interrupted Time Series Analyses: slope, slope differences, and level changes. We calculated the slopes in procurement and discard rates using pre and post KDPI periods (pre KDPI from 2010 Q1 to 2012 Q1; post-KDPI 2012 Q2 to 2014 Q4) or pre- and post-KAS introduction periods (pre-KAS from 2012 Q2 to 2014 Q4 and post-KAS from 2015 Q1 to 2020 Q4). We defined slope difference as the difference in the slopes of procurement or discard rate from pre- and post-KDPI implementation periods or pre- and post-KAS introduction periods. Level change is the step difference in the procurement or discard rate at the date of KDPI introduction or KAS implementation. **Figure S1** graphically explains the Interrupted Time Series metrics. All inference testing was 2-sided with a significance level of $P < 0.05$ with the use of the Hochberg multiple comparison testing

method.²⁰ When examining transplantation rates of AKI kidneys by transplant centers, we excluded pediatric transplant centers. Analyses were conducted in SAS, version 9.4 (SAS Institute, Inc).

3. Results

3.1 Trends in the Characteristics of the Deceased-Donor Pool

The number of all study-eligible deceased kidney donors with at least 1 kidney procured for transplant purposes increased from 6841 in 2010 to 11,493 in 2020. Changes in the demographic characteristics of study-eligible deceased donors before and after KAS implementation can be seen in **Figure 2A** and **2B**. The proportion of donors with the following characteristics increased from 2010 to 2020: hepatitis C serostatus (5% to 11%), obesity (31% to 38%), terminal SCr ≥ 3 mg/dL (7% to 14%), and cardiac determination of death (10% to 20%), p-values < 0.05 for all (**Figure 2A**). The proportion of donors with DCD increased among all stages of AKI from 2010-2020 (**Table S2, S4A**). Donor race/ethnicity, diabetes status, and hypertension status did not change significantly during this timeframe. Of the 93,341 deceased donors, 33682 (36%) experienced AKI. The proportion of deceased donors with any AKI remained consistent during the study period (38% in 2010 to 37% in 2020), while the proportion of donors with stage 3 AKI increased from 6% in 2010 to 12% in 2020. Stage 3 AKI accounted for a growing proportion of donors with high terminal SCr (> 3 mg/dL), increasing from 66% (326/491) in 2010 to 74% (1228/1657) in 2020 (**Table 1**). The characteristics of donors with stage 3 AKI have shown increases in age, BMI, DCD status, and HCV seropositivity. Average terminal SCr values among donors with stage 3 AKI increased from 4.7 (2.45) mg/dl in 2010 to 5.49 (2.54) mg/dl in 2020 mg/dl (**Figure 2B, Table S4C**).

From 2010 to 2020, procured kidneys were statistically significantly more likely to be machine-perfused (39% to 55%), biopsied (43% to 52%), and have prolonged cold ischemia times (≥ 15 hours; 50% to 58%) (**Figure 2C, Table S4B**). Biopsy rates, perfusion rates, and cold ischemia times also increased among procured stage 3 AKI kidneys from 2010-2020. Biopsy rates increased from 73% in 2010 to 92% in 2020 (**Figure 2D, Table S4D**).

3.2 Trends in the Procurement of Kidneys for Transplantation from AKI Donors

A total of 172,410 kidneys were procured for transplantation during the study timeframe. The number of deceased-donor kidneys procured increased from 12,612 in 2010 to 21,773 in 2020 (procurement proportion increased from 92.2% in 2010 to 94.7% in 2020). AKI kidneys

accounted for 34% (57,839/172,410) of the kidneys procured during the timeframe. The proportions of kidneys procured remained stable from 2010 to 2020 among deceased donors without AKI, with stage 1 AKI, and with stage 2 AKI (**Table 2, Figure 3A and 3B**). The procurement proportion increased among donors with stage 3 AKI from 51.3% (423/824) in 2010 to 80.0% (2183/2730) in 2020. The number of OPOs that did not procure any kidneys with stage 3 AKI decreased from 3 in 2010 to 1 in 2020.

Figure 4A and **Figure 4B** show Interrupted Time Series analysis of procurement rates following KDPI introduction and KAS implementation by stages of AKI, respectively. The adjusted level change (95% CI) with KDPI introduction on the procurement rate – illustrated in **Figure 4A** by an upward or downward step change after the first quarter (March) of 2012 – were as follows: -1.2 (-2.2, -0.2) for kidneys without AKI, -1.7 (-4.0, 0.5) for stage 1 AKI kidneys, 3.4 (-2.7, 9.5) for stage 2 AKI kidneys, and -3.3 (-11.6, 5.0) among stage 3 AKI kidneys following KDPI introduction (**Table S3A**). These correspond to slope differences (95% CI) of 0.09 (-0.14, 0.32) among kidneys without AKI, 0.21 (-0.24, 0.66) for stage 1 AKI kidneys, -0.35 (-1.19, 0.48) for stage 2 AKI kidneys, and -0.39 (-1.89, 1.11) for stage 3 AKI kidneys (**Figure S1**). The adjusted level changes (95% CI) in procurement rate following KAS implementation were -1.1 (-4.4, 2.2) for kidneys without AKI, -2.6 (-7.2, 2.0) for stage 1 AKI, 0.3 (-6.8, 7.4) for stage 2 AKI, and -0.3 (-9.2, 8.6) among stage 3 AKI kidneys (**Figure 4B; Table S3B**). These correspond to slope differences (95% CI) of 0.05 (-0.28, 0.38) among kidneys without AKI, 0.07 (-0.54, 0.68) among stage 1 AKI, 0.82 (-0.4, 2.03) among stage 2 AKI kidneys, and 0.1 (-2.33, 2.54) among stage 3 AKI kidneys.

3.3 Trends in the Discard of Kidneys Procured for Transplant from AKI Donors

Among the 172,410 kidneys procured, 137,426 (80%) were transplanted and the remaining 34,984 (20%) were discarded. The number of discarded deceased-donor kidneys increased from 2451 in 2010 to 4785 in 2020 but the overall discard rate increased from 19.4% (2451/12612) in 2010 and 22.0% (4785/21773) in 2020 (**Table 2**). Kidneys from deceased donors with AKI accounted for 50% (17,559/34,984) of kidneys discarded over the study period. The discard rate did not statistically significantly change for kidneys from donors without AKI or donors with stage 1 AKI from 2010-2020 (**Table 2** and **Figure 3C and 3D**). Discard of kidneys from donors with stage 2 AKI increased from 29.2% (268/919) in 2010 to 33.9% (503/1485) in 2020. Discard of kidneys from donors with stage 3 AKI increased from 41.4% (175/423) in 2010 to 44.0% (960/2183) in 2020.

Interrupted Time Series analysis of kidney discard following KDPI introduction and KAS implementation by stages of AKI can be seen in **Figure 4C** and **Figure 4D** as an upward or downward step change in March, 2012 and January, 2015, respectively. The slope differences for stage 3 AKI kidneys following KDPI and KAS implementation and are shown in **Tables S3A and S3B** respectively. There were no statistically significant changes in discard by KDPI or KAS implementation.

3.4 Transplant Center-Level Trends

The number of transplant centers that used stage 3 AKI kidneys increased from 87/243 (36%) in 2010 to 137/243 (56%) in 2020. The proportion of transplant centers with high stage 3 AKI kidney utilization (>5% of all their transplants that year) increased from 13% (35/243) in 2010 to 32% (78/243) in 2020 (**Table 3**).

4. Discussion

From 2010 to 2020, the proportion of referred donors with stage 3 AKI and the procurement rate of stage 3 AKI kidneys increased significantly. The discard rate of stage 3 AKI kidneys dropped from 41% in 2010 to 32% in 2012 before increasing to 44% in 2020, a rise that coincided with the introduction of KDPI and implementation of KAS. Increases in the utilization of stage 3 AKI kidneys at the transplant center level appear to be driven by a small proportion of transplant centers (centers with >5% of their transplants each year from stage 3 AKI kidneys) that have aggressively utilized these kidneys, as the majority of centers use relatively few stage 3 AKI kidneys.

The observed increases in the proportion of deceased donors with stage 3 AKI may be partially explained by increasing prevalence of risk factors including obesity, circulatory determination of death, sepsis, acute heart failure, and increased rates of cardiac catheterization and mechanical ventilation.²¹ The incidence severe AKI among hospitalized patients has been rising and thus the increasing prevalence of AKI among deceased donors is not unexpected.²¹ On the other hand, it is also possible that some temporal trends observed here are due to changes in the aggressiveness of OPOs over time, such that some OPOs pursued donors with higher KDPIs and reported these donors to UNOS.

Despite the possibly higher comorbidity profile, cohort and registry-based findings support the use of AKI kidneys. However, our study identified that nearly half of all discarded kidneys from 2010-2020 were from donors with AKI. In a review of 28 cohort and registry-based

studies on AKI and graft failure, 25 studies found no association between AKI and graft failure.¹² Findings from the remaining three studies may be attributed to different practices in the United Kingdom compared to the United States^{22,23} as well as restricted settings in intensive care²⁴ and expanded criteria donors.²⁵ A propensity score-matched US registry study detected no association between AKI and graft failure, even in the most severe instances of AKI.¹¹ The comparable rates of graft survival between AKI and non-AKI kidneys have been hypothesized to be the result of fluid losses and hemodynamic changes from vasopressin fluctuations during brain death, resulting in high terminal SCr that may not be indicative of intrinsic tissue injury.^{26–28} AKI kidneys, including stage 3 AKI kidneys, may be a viable and underutilized group of deceased-donor kidneys.

The discard rate of stage 3 AKI kidneys decreased from 2010 to 2012 before increasing until the end of 2020, coinciding with the introduction of KDPI in 2012 and subsequent KAS implementation in 2014. Increased procurement and discard rates have led to proportionately less utilization, although the absolute number of kidneys utilized has increased. A subsequent Interrupted Time Series analysis, a quasi-experimental design that evaluates the effect of an intervention, confirmed that the decline in the discard rate of stage 3 AKI kidneys prior to 2012 and increase after KAS implementation or KDPI introduction was not statistically significant. Our findings, although not statistically significant, suggest there may be a KDPI “labeling effect” where viable kidneys with high KDPI scores are less likely to be accepted by patients and transplant centers.⁵ This labeling effect may be most evident for KDPI >85% kidneys, since receiving offers for such kidneys requires explicit, written consent from the patient.² In fact, most (~70%) high terminal SCr values are from donors with stage 3 AKI – and disproportionately more likely to be discarded.²⁹ For example, in a 41-year old, Black donor with hypertension and diabetes, without HCV and DCD, with a cerebrovascular cause of death, and stage 3 AKI, calculations based on his terminal SCr of 6.6 mg/dL generates a KDPI of 85 compared to his lowest SCr value in DonorNet of 0.9 mg/dL which generates a KDPI of 70. The resulting high KDPI scores driven by high terminal SCr due to AKI status may have increased discard of viable AKI kidneys – without significant improvement in the performance of the KDPI.⁹ Additional possible contributors to lower utilization include fear of poor outcomes, potential increased resource utilization coupled with non-reimbursement, and other constraints in such allocation practices.

Alternatively, the advent of KDPI and KAS may have supported a more aggressive pursuit of donor kidneys. As such, KDPI and/or KAS implementation may have mediated the observed increases in the stage 3 AKI discard rate. These two seemingly paradoxical trends –

the rise in the stage 3 AKI kidney discard rate, concurrent with an increase in the number of centers transplanting these kidneys – is likely due to increased procurement of stage 3 AKI kidneys that outpaces utilization. In addition, prior studies have identified the existence of aggressive centers that consistently use suboptimal grafts.³⁰ Aggressive centers, defined in our study as transplant centers with >5% of their transplants from stage 3 AKI kidneys, comprise a small, growing proportion of US transplant centers. The majority of transplant centers use few stage 3 AKI kidneys, and almost half of all US transplant centers did not use any stage 3 AKI kidneys in 2020. The influx of procured stage 3 AKI kidneys has also coincided with increased usage of kidney hypothermic machine perfusion and longer cold ischemia times, the former of which has been identified as a significant buffer in preventing discard.³¹ As the transplant system faces a steady influx of kidneys, mock organ offer simulation studies including UNOS's DonorNet simulator, SimUNet, could help forecast behavioral changes in organ offer acceptance practice as OPOs procure more complex kidneys, including those from donors with AKI.³² Further utilization of the stage 3 AKI kidneys may be assisted by availability of repair biomarkers like YKL-40 or uromodulin and osteopontin that are associated with improved long term graft outcomes in recipients.^{33,34}

There are several strengths and limitations to consider in our study. First, we used national registry data from 2010-2020 to characterize trends in deceased-donor kidney procurement and allocation practices in the US. Use of DonorNet provided serial SCr measurements to more closely align AKI definitions with established definitions and includes all solid organ donors – regardless of whether they a kidney was procured or not. To our knowledge, this is the first study to characterize national trends in the procurement and utilization of AKI kidneys from deceased donors using this definition of AKI. Finally, the use of Interrupted Time Series analyses accounted for underlying trends in donor demographics and kidney allocation practices, as well as secular trends.¹⁹ Limitations to our study include lack of urine output to define AKI according to KDIGO guidelines. In addition, use of the lowest SCr on admission as the baseline to calculate AKI may have underestimated the true number of stage 3 AKI kidneys as events prior to hospitalization may elevate SCr. Furthermore, the Interrupted Time Series analyses assume a lack of competing interventions during the study timeframe. Sample sizes are also much smaller for the stage 3 AKI group, which limits the power to detect potentially real effects. This limitation may explain why some apparently large effects upon visual examination are statistically insignificant (i.e. stage 3 AKI). Finally, the final year of the study (2020) was impacted immensely by COVID-19, particularly as kidney discard rates spiked

at the start of the pandemic. Data points from early 2020 may serve as leverage/influence points in ITS analyses.

In conclusion, we found statistically insignificant increases in the procurement and discard rates of stage 3 AKI kidneys following implementation of KAS. Although the discard rate has increased, the absolute number of stage 3 AKI kidneys transplants has increased and the number of transplant centers utilizing stage 3 AKI kidneys has increased from 33% to over half. This may reflect increased center adoption and experience with stage 3 AKI kidneys with continued room for improvement in organ utilization.

Acknowledgements

The data reported here have been supplied by the United Network for Organ Sharing (UNOS) as the contractor for the OPTN. The interpretation and reporting of these data are the responsibility of the author(s) and in no way should be seen as an official policy of or interpretation by the OPTN or the U.S. Government.

The content is the responsibility of the authors alone and does not necessarily reflect the view or policies of the Department of Health and Human Services, nor does mention of trade names, commercial products, or organizations imply endorsement by the U.S. Government. These organizations were not involved in study design, analysis, interpretation, or manuscript creation.

Disclosures

S. Alasfar reports grant support from CareDx, Shire, and NIH. P.P. Reese reports epidemiology consulting for VALHeath related to identifying patients with chronic kidney disease; Investigator-initiated and collaborative grants from Merck, Gilead and AbbVie to the University of Pennsylvania to support trials of transplanting organs from donors with Hepatitis C into Hepatitis C negative recipients; and serves as an Associate Editor of the American Journal of Kidney Disease. S. Mohan reports grant/research support from NIH (NIDDK/NIAID/NIHMD/NIBIB), consulting fees from Angion Pharmaceuticals and serves as Deputy Editor of Kidney International Reports. M.D. Doshi reports salary support from NIDDK. I.E. Hall reports NIH grant support from NCATS (UL1TR002538 and KL2TR002539). C.R. Parikh reports consulting fees from Renalytix (Advisory Board) and Genfit (DSMB), grant/research support from National Institute of Diabetes and Digestion and Kidney Diseases, National Heart, Lung and Blood Institute. All other co-authors have no disclosures as described by the American Journal of

Transplantation. The authors of this manuscript have no conflicts of interest to disclose as described by the American Journal of Transplantation.

Supporting Information Statement

Additional Supporting Information may be found in the online version of this article.

Table S1. Demographic and Clinical Characteristics of Study-Eligible Deceased Kidney Donors and Kidney Procurement Characteristics from Pre and Post KAS Implementation

Table S2. Proportion of Donation after Circulatory Death (DCD) Donors by Stages of AKI from 2010-2020

Table S3. Interrupted Time Series Effect Estimates

Figure S1. Interrupted Time Series Explanation

Table S4. Demographic and Clinical Characteristics of all Donors (A), all Recipients (B), Stage 3 AKI Donors (C), and Recipients of Stage 3 AKI Kidneys (D) from 2010-2020

Data Availability Statement

The data that support the findings of this study are available via request to the Organ Procurement and Transplantation Network (OPTN).

Figure Legends

Figure 1. Flow Chart of Cohort Selection

Legend: Abbreviations: SCr, serum creatinine

Figure 2. Donor Characteristics and Kidney Procurement Practices among the Deceased Donor Pool from 2010-2020

Legend: Points represent proportions. Abbreviations: BMI, body mass index; CVA, cerebrovascular; DCD, donor after cardiac death; KAS, Kidney Allocation System; KDPI, kidney donor profile index; OPO, organ procurement organization. Cold Ischemia Time was dichotomized at the median time of 15 hours.

Figure 3 Trends in Kidney Procurement (A, B) and Discard (C, D) by Stages of AKI from 2010-2020

Legend: Figures 3A and 3C show the absolute counts of the number of kidneys procured and discarded from 2010-2020 by stages of AKI. Figures 3B and 3D show the proportion of kidneys procured and discarded from 2010-2020 by stages of AKI.

Abbreviations: AKI, acute kidney injury

Figure 4. Interrupted Time Series* of Kidney Procurement and Discard by Stages of AKI after Introduction of KDPI and Implementation of KAS

* Points represent observed rates per quarter. Lines represent predicted rates from ITS analysis
The dotted vertical lines indicate the introduction of KDPI or the implementation of KAS
Abbreviations: AKI, acute kidney injury; KAS, Kidney Allocation System; KDPI, Kidney Donor Profile Index. See Table S3 for ITS Effect estimates and Figure S1 for a graphical explanation of ITS.

References

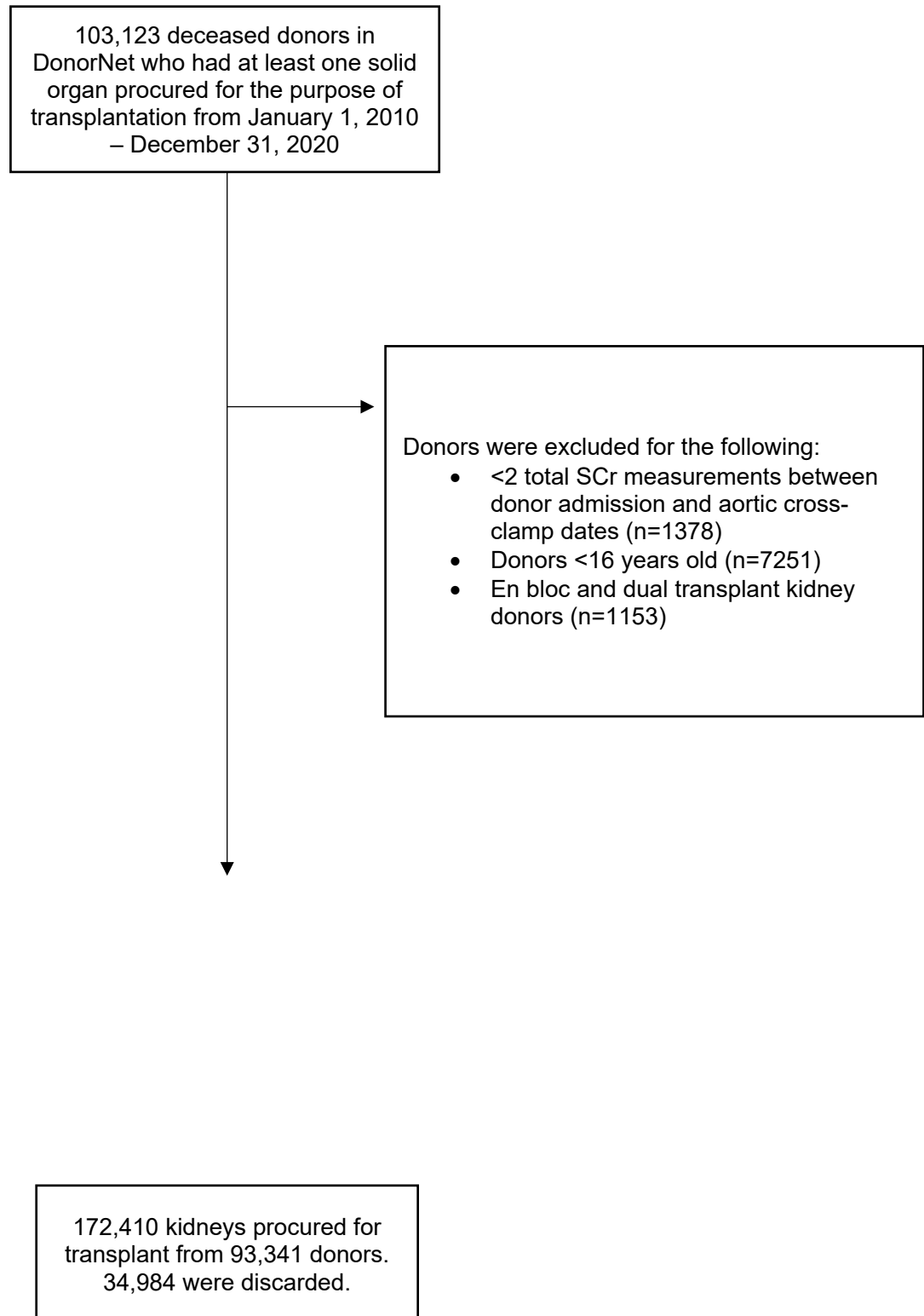
1. U.S. Department of Health and Human Services. National Data - OPTN. <https://optn.transplant.hrsa.gov/data/view-data-reports/national-data/>. Accessed November 2, 2020.
2. Stewart DE, Garcia VC, Aeder MI, Klassen DK. New Insights Into the Alleged Kidney Donor Profile Index Labeling Effect on Kidney Utilization. *Am J Transplant*. 2017;17(10):2696-2704. doi:10.1111/ajt.14379
3. OPTN Kidney Transplantation Committee. *The New Kidney Allocation System (KAS) Frequently Asked Questions Contents.*; 2014.
4. Cooper M, Formica R, Friedewald J, et al. Report of National Kidney Foundation Consensus Conference to Decrease Kidney Discards. *Clin Transplant*. 2019;33(1). doi:10.1111/ctr.13419
5. Bae S, Massie AB, Luo X, Anjum S, Desai NM, Segev DL. Changes in Discard Rate After the Introduction of the Kidney Donor Profile Index (KDPI). *Am J Transplant*. 2016;16(7):2202-2207. doi:10.1111/ajt.13769
6. Mohan S, Chiles MC, Patzer RE, et al. Factors leading to the discard of deceased donor kidneys in the United States. *Kidney Int*. 2018;94(1):187-198. doi:10.1016/j.kint.2018.02.016
7. Massie AB, Luo X, Chow EKH, Alejo JL, Desai NM, Segev DL. Survival Benefit of Primary Deceased Donor Transplantation With High-KDPI Kidneys. *Am J Transplant*. 2014;14(10):2310-2316. doi:10.1111/ajt.12830
8. Husain SA, King KL, Pastan S, et al. Association Between Declined Offers of Deceased Donor Kidney Allograft and Outcomes in Kidney Transplant Candidates. *JAMA Netw Open*. 2019;2(8):e1910312. doi:10.1001/jamanetworkopen.2019.10312
9. Chiles MC, Husain SA, Skillen W, et al. Predictive Value of Using Initial Versus Terminal Deceased Donor Creatinine to Calculate the Kidney Donor Risk Index. *Am J Kidney Dis*. 2017;70(1):153-154. doi:10.1053/j.ajkd.2017.02.373
10. Hall IE, Akalin E, Bromberg JS, et al. Deceased-donor acute kidney injury is not associated with kidney allograft failure. *Kidney Int*. 2019;95(1):199-209. doi:10.1016/j.kint.2018.08.047
11. Liu C, Hall IE, Mansour S, Thiessen Philbrook HR, Jia Y, Parikh CR. Association of Deceased Donor Acute Kidney Injury With Recipient Graft Survival. *JAMA Netw open*. 2020;3(1):e1918634. doi:10.1001/jamanetworkopen.2019.18634

12. Koyawala N, Parikh CR. A Review of Donor Acute Kidney Injury and Posttransplant Outcomes. *Transplantation*. 2020;104(8):1553-1559. doi:10.1097/tp.0000000000003144
13. Hall IE, Schröppel B, Doshi MD, et al. Associations of deceased donor kidney injury with kidney discard and function after transplantation. *Am J Transplant*. 2015;15(6):1623-1631. doi:10.1111/ajt.13144
14. Sonnenberg EM, Hsu JY, Cohen JB, et al. Acute Kidney Injury in Deceased Organ Donors and Kidney Transplant Outcomes: A National Cohort Study using a Novel Data Source. *Ann Surg*. 2020. doi:10.1097/SLA.0000000000004597
15. Reese PP, Hall IE, Weng FL, et al. Associations between Deceased-Donor Urine Injury Biomarkers and Kidney Transplant Outcomes. *J Am Soc Nephrol*. 2016;27(5):1534-1543. doi:10.1681/ASN.2015040345
16. Rao PS, Schaubel DE, Guidinger MK, et al. A Comprehensive Risk Quantification Score for Deceased Donor Kidneys: The Kidney Donor Risk Index. *Transplantation*. 2009;88(2):231-236. doi:10.1097/TP.0b013e3181ac620b
17. Organ Procurement and Transplantation Network. *A Guide to Calculating and Interpreting the Kidney Donor Profile Index (KDPI)*.; 2019.
18. Khwaja A. KDIGO Clinical Practice Guidelines for Acute Kidney Injury. *Nephron*. 2012;120(4):c179-c184. doi:10.1159/000339789
19. Penfold RB, Zhang F. Use of interrupted time series analysis in evaluating health care quality improvements. *Acad Pediatr*. 2013;13(6 SUPPL.):S38-S44. doi:10.1016/j.acap.2013.08.002
20. Hochberg Y. A Sharper Bonferroni Procedure for Multiple Tests of Significance. *Biometrika*. 1988;75(4):800. doi:10.2307/2336325
21. Hsu RK, McCulloch CE, Dudley RA, Lo LJ, Hsu CY. Temporal changes in incidence of dialysis-requiring AKI. *J Am Soc Nephrol*. 2013;24(1):37-42. doi:10.1681/ASN.2012080800
22. Boffa C, van de Leemkolk F, Curnow E, et al. Transplantation of Kidneys From Donors With Acute Kidney Injury: Friend or Foe? *Am J Transplant*. 2017;17(2):411-419. doi:10.1111/ajt.13966
23. Ibrahim M, Vece G, Mehew J, et al. An international comparison of deceased donor kidney utilization: What can the United States and the United Kingdom learn from each other? *Am J Transplant*. 2020;20(5):1309-1322. doi:10.1111/ajt.15719
24. Kolonko A, Chudek J, Pawlik A, Wilk J, Jałowicki P, Więcek A. Acute Kidney Injury Before Organ Procurement is Associated With Worse Long-Term Kidney Graft Outcome.

- Transplant Proc.* 2011;43(8):2871-2874. doi:10.1016/j.transproceed.2011.07.017
25. Yeong Park W, Choi M-S, Soo Kim Y, et al. Impact of acute kidney injury in expanded criteria deceased donors on post-transplant clinical outcomes: multicenter cohort study. doi:10.1186/s12882-019-1225-1
 26. Parikh CR, Puthumana J, Shlipak MG, et al. Relationship of Kidney Injury Biomarkers with Long-Term Cardiovascular Outcomes after Cardiac Surgery. *J Am Soc Nephrol.* 2017;28(12):3699-3707. doi:10.1681/ASN.2017010055
 27. Belcher JM, Sanyal AJ, Peixoto AJ, et al. Kidney biomarkers and differential diagnosis of patients with cirrhosis and acute kidney injury. *Hepatology.* 2014;60(2):622-632. doi:10.1002/hep.26980
 28. Dupont M, Shrestha K, Singh D, et al. Lack of significant renal tubular injury despite acute kidney injury in acute decompensated heart failure. *Eur J Heart Fail.* 2012;14(6):597-604. doi:10.1093/eurjhf/hfs039
 29. Kayler LK, Garzon P, Magliocca J, et al. Outcomes and Utilization of Kidneys from Deceased Donors with Acute Kidney Injury. *Am J Transplant.* 2009;9(2):367-373. doi:10.1111/j.1600-6143.2008.02505.x
 30. Garonzik-Wang JM, James NT, Weatherspoon KC, et al. The Aggressive Phenotype: Center-Level Patterns in the Utilization of Suboptimal Kidneys. *Am J Transplant.* 2012;12(2):400-408. doi:10.1111/j.1600-6143.2011.03789.x
 31. Stewart DE, Garcia VC, Rosendale JD, Klassen DK, Carrico BJ. Diagnosing the decades-long rise in the deceased donor kidney discard rate in the United States. *Transplantation.* 2017;101(3):575-587. doi:10.1097/TP.0000000000001539
 32. Stewart D, Shepard B, Rosendale J, et al. Can Behavioral Research Improve Transplant Decision-Making? A Mock Offer Study on the Role of Kidney Procurement Biopsies. *Kidney360.* 2020;1(1):36-47. doi:10.34067/kid.0000212019
 33. SG M, C L, Y J, et al. Uromodulin to Osteopontin Ratio in Deceased Donor Urine Is Associated With Kidney Graft Outcomes. *Transplantation.* 2021;105(4):876-885. doi:10.1097/TP.0000000000003299
 34. J P, H T-P, L X, et al. Biomarkers of inflammation and repair in kidney disease progression. *J Clin Invest.* 2021;131(3). doi:10.1172/JCI139927

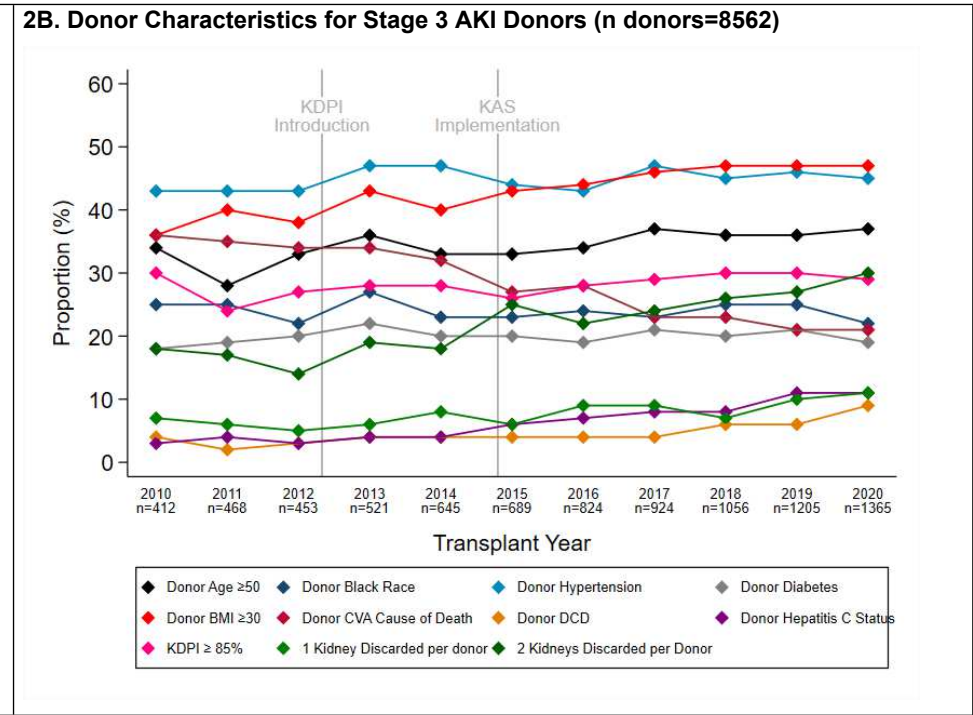
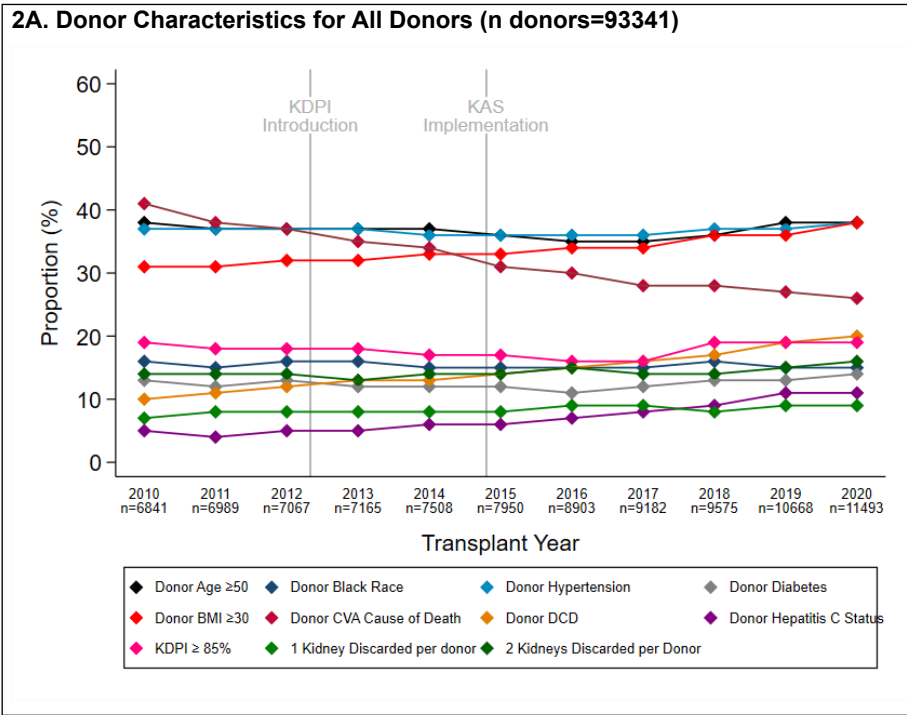
Main Tables and Figures

Figure 1. Flow Chart of Cohort Selection



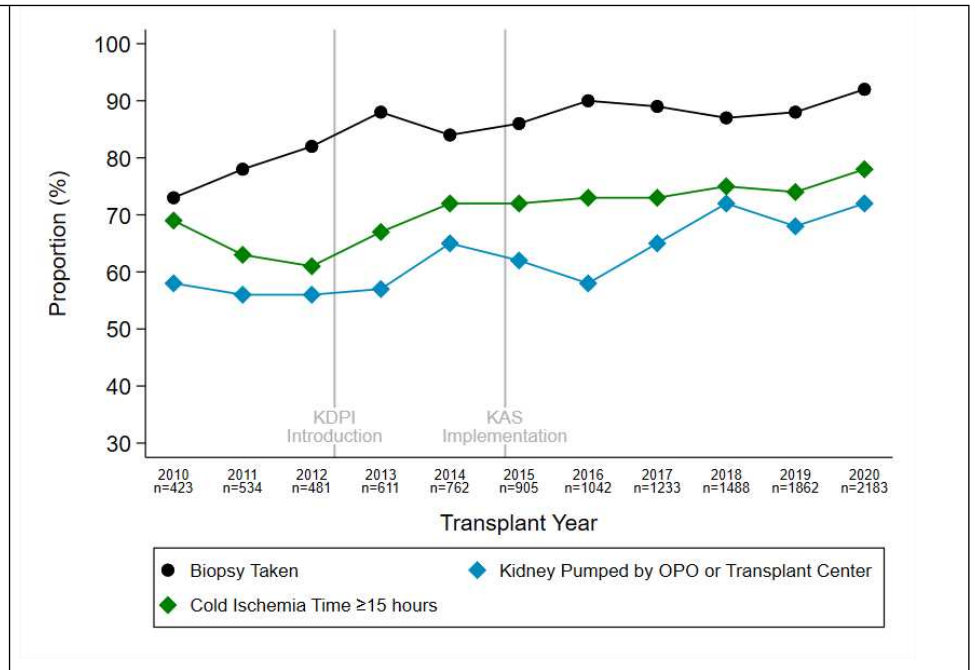
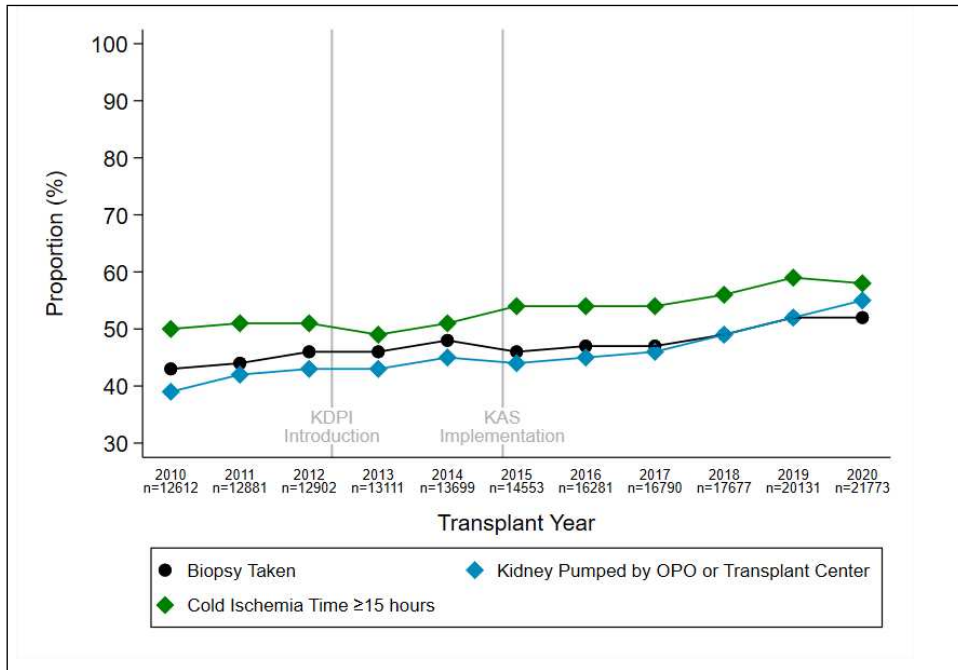
Legend: Abbreviations: SCr, serum creatinine

Figure 2. Donor Characteristics and Kidney Procurement Practices among the Deceased Donor Pool from 2010-2020



2C. Kidney Procurement Practices (All Donors n procured kidneys =172410)

2D. Kidney Procurement Practices (Stage 3 AKI Donors n procured kidneys=11524)



Legend: Points represent proportions. Abbreviations: BMI, body mass index; CVA, cerebrovascular; DCD, donor after cardiac death; KAS, Kidney Allocation System; KDPI, kidney donor profile index; OPO, organ procurement organization. Cold Ischemia Time was dichotomized at the median time of 15 hours.

Table 1. Number & Percentage of Donors with Stages of AKI by Levels of Terminal Serum Creatinine from 2010-2020

	Year										
	2010	2011	2012	2013	2014	2015	2016	2017	2018	2019	2020
Among terminal SCr>3 mg/dL	N=491	N=542	N=567	N=614	N=740	N=843	N=996	N=1133	N=1307	N=1478	N=1657
No AKI	36 (7%)	41 (8%)	45 (8%)	51 (8%)	56 (8%)	66 (8%)	63 (6%)	76 (7%)	90 (7%)	91 (6%)	99 (6%)
Stage 1 AKI	62 (13%)	55 (10%)	61 (11%)	60 (10%)	59 (8%)	75 (9%)	91 (9%)	86 (8%)	112 (9%)	126 (9%)	144 (9%)
Stage 2 AKI	67 (14%)	82 (15%)	87 (15%)	72 (12%)	99 (13%)	110 (13%)	128 (13%)	154 (14%)	169 (13%)	185 (13%)	186 (11%)
Stage 3 AKI	326 (66%)	364 (67%)	374 (66%)	431 (70%)	526 (71%)	592 (70%)	714 (72%)	817 (72%)	936 (72%)	1076 (73%)	1228 (74%)
Among terminal SCr>2 mg/dL	N=1032	N=1094	N=1097	N=1148	N=1326	N=1435	N=1740	N=1879	N=2102	N=2392	N=2723
No AKI	80 (8%)	102 (9%)	98 (9%)	111 (10%)	101 (8%)	126 (9%)	117 (7%)	146 (8%)	161 (8%)	176 (7%)	211 (8%)
Stage 1 AKI	332 (32%)	308 (28%)	320 (29%)	316 (28%)	337 (25%)	357 (25%)	458 (26%)	451 (24%)	513 (24%)	581 (24%)	691 (25%)
Stage 2 AKI	239 (23%)	262 (24%)	258 (24%)	236 (21%)	290 (22%)	298 (21%)	371 (21%)	393 (21%)	413 (20%)	473 (20%)	488 (18%)
Stage 3 AKI	381 (37%)	422 (39%)	421 (38%)	485 (42%)	598 (45%)	654 (46%)	794 (46%)	889 (47%)	1015 (48%)	1162 (49%)	1333 (49%)

Abbreviations: AKI, acute kidney injury; SCr, serum creatinine

Table 2. Number of Kidneys Procured and Discarded by Stages of AKI from 2010-2020.

		Year										
		2010	2011	2012	2013	2014	2015	2016	2017	2018	2019	2020
Total available donors		6841	6989	7067	7165	7508	7950	8903	9182	9575	10668	11493
N (%) kidneys	procured ^a	12612 (92%)	12881 (92%)	12902 (91%)	13111 (91%)	13699 (91%)	14553 (92%)	16281 (91%)	16790 (91%)	17677 (92%)	20131 (94%)	21773 (95%)
	discarded ^b	2451 (19%)	2460 (19%)	2549 (20%)	2527 (19%)	2721 (20%)	2948 (20%)	3429 (21%)	3354 (20%)	3543 (20%)	4217 (21%)	4785 (22%)
No AKI												
N (%) of donors ^c		4243 (62%)	4381 (63%)	4587 (65%)	4608 (64%)	4788 (64%)	5192 (65%)	5793 (65%)	5984 (65%)	6012 (63%)	6799 (64%)	7272 (63%)
N available kidneys		8486	8762	9174	9216	9576	10384	11586	11968	12024	13598	14544
N (%) kidneys	procured ^a	8186 (96%)	8402 (96%)	8739 (95%)	8806 (96%)	9158 (96%)	9915 (95%)	11082 (96%)	11403 (95%)	11553 (96%)	13198 (97%)	14129 (97%)
	discarded ^b	1222 (15%)	1306 (16%)	1397 (16%)	1330 (15%)	1373 (15%)	1496 (15%)	1748 (16%)	1671 (15%)	1658 (14%)	2026 (15%)	2198 (16%)
Stage 1 AKI												
N (%) of donors ^c		1674 (24%)	1599 (23%)	1511 (21%)	1551 (22%)	1539 (20%)	1514 (19%)	1637 (18%)	1638 (18%)	1801 (19%)	1900 (18%)	2083 (18%)
N available kidneys		3348	3198	3022	3102	3078	3028	3274	3276	3602	3800	4166
N (%) kidneys	procured ^a	3084 (92%)	2967 (93%)	2730 (90%)	2826 (91%)	2826 (92%)	2747 (91%)	2975 (91%)	3023 (92%)	3340 (93%)	3618 (95%)	3976 (95%)
	discarded ^b	786 (25%)	698 (24%)	723 (26%)	710 (25%)	714 (25%)	757 (28%)	858 (29%)	791 (26%)	879 (26%)	942 (26%)	1124 (28%)
Stage 2 AKI												
N (%) of donors ^c		512 (7.5%)	541 (7.7%)	516 (7.3%)	485 (6.8%)	536 (7.1%)	555 (7%)	649 (7.3%)	636 (6.9%)	706 (7.4%)	764 (7.2%)	773 (6.7%)
N available kidneys		1024	1082	1032	970	1072	1110	1298	1272	1412	1528	1546
N (%) kidneys	procured ^a	919 (90%)	978 (90%)	952 (92%)	868 (89%)	953 (89%)	986 (89%)	1182 (91%)	1131 (89%)	1296 (92%)	1453 (95%)	1485 (96%)
	discarded ^b	268 (29%)	271 (28%)	276 (29%)	253 (29%)	349 (37%)	311 (32%)	390 (33%)	375 (33%)	387 (30%)	490 (34%)	503 (34%)
Stage 3 AKI												
N (%) of donors ^c		412 (6%)	468 (6.7%)	453 (6.4%)	521 (7.3%)	645 (8.6%)	689 (8.7%)	824 (9.3%)	924 (10.1%)	1056 (11%)	1205 (11.3%)	1365 (11.9%)
N available kidneys		824	936	906	1042	1290	1378	1648	1848	2112	2410	2730
N (%) kidneys	procured ^a	423 (51%)	534 (57%)	481 (53%)	611 (59%)	762 (59%)	905 (66%)	1042 (63%)	1233 (67%)	1488 (70%)	1862 (77%)	2183 (80%)
	discarded ^b	175 (41%)	185 (35%)	153 (32%)	234 (38%)	285 (37%)	384 (42%)	433 (42%)	517 (42%)	619 (42%)	759 (41%)	960 (44%)

Abbreviations: AKI, acute kidney injury

^a Procurement rate was calculated as the number of kidneys procured over the number of available kidneys from eligible donors.

This article is protected by copyright. All rights reserved

^b Discard was calculated as the number of kidneys that were ultimately not utilized over the number of kidneys procured for transplantation.

^c The proportion of donors with no AKI, stage 1, stage 2, or stage 3 AKI was calculated as the number of donors with the corresponding AKI status over the total number of eligible donors from the deceased donor pool that year.

Table 3. Number of transplant centers* by proportion of at least stage 2 or stage 3 AKI kidney transplants

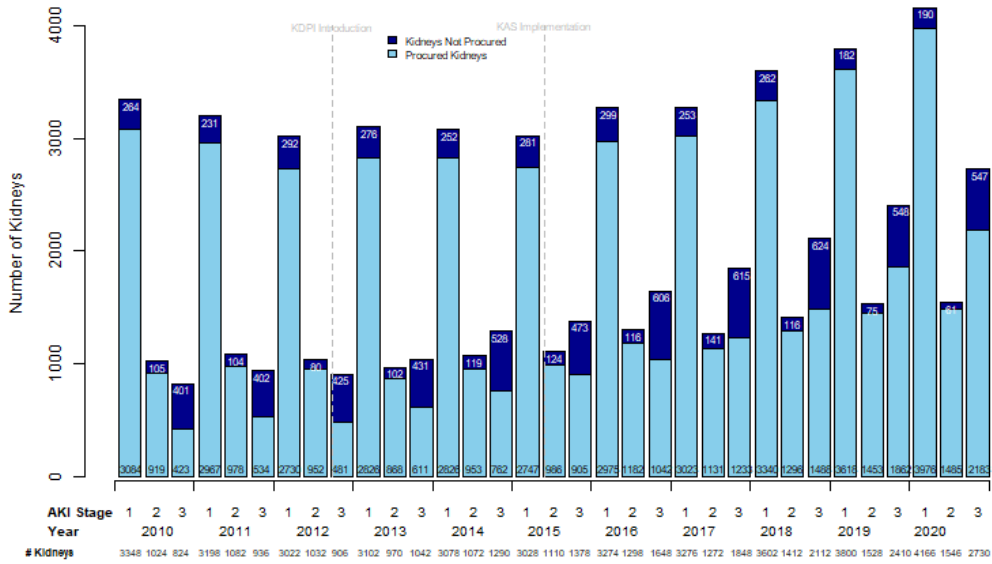
	Transplant year										
	2010	2011	2012	2013	2014	2015	2016	2017	2018	2019	2020
Number (%) of transplant centers by proportion of ≥ stage 2 AKI kidney transplants											
0% ≥ stage 2 AKI	52 (21%)	57 (23%)	56 (23%)	56 (23%)	58 (24%)	58 (24%)	49 (20%)	51 (21%)	41 (17%)	45 (19%)	45 (19%)
0-5% ≥ stage 2 AKI	60 (25%)	64 (26%)	61 (25%)	73 (30%)	65 (27%)	56 (23%)	65 (27%)	57 (23%)	55 (23%)	57 (23%)	52 (21%)
>5% ≥ stage 2 AKI	131 (54%)	122 (50%)	126 (52%)	114 (47%)	120 (49%)	129 (53%)	129 (53%)	135 (56%)	147 (60%)	141 (58%)	146 (60%)
Number (%) of transplant centers by proportion of Stage 3 AKI kidney transplants											
0% stage 3 AKI	156 (64%)	152 (63%)	159 (65%)	150 (62%)	137 (56%)	131 (54%)	136 (56%)	126 (52%)	111 (46%)	120 (49%)	106 (44%)
0-5% stage 3 AKI	56 (23%)	50 (21%)	54 (22%)	50 (21%)	63 (26%)	64 (26%)	61 (25%)	61 (25%)	58 (24%)	48 (20%)	59 (24%)
>5% stage 3 AKI	31 (13%)	41 (17%)	30 (12%)	43 (18%)	43 (18%)	48 (20%)	46 (19%)	56 (23%)	74 (30%)	75 (31%)	78 (32%)

Abbreviations: AKI, acute kidney injury

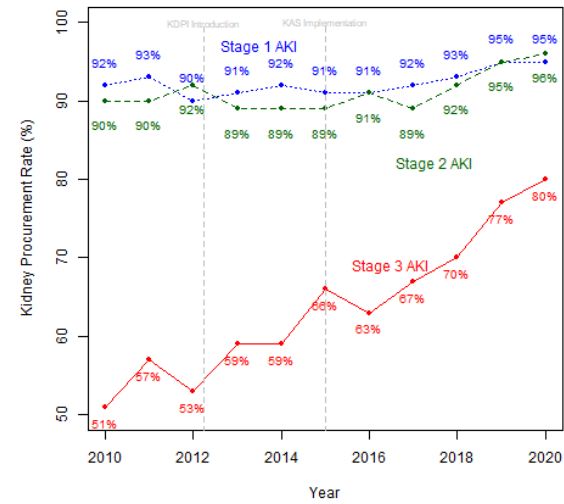
***17 pediatric transplant centers were excluded. 243 transplant centers included.**

Figure 3. Trends in Kidney Procurement (A, B) and Discard (C, D) by Stages of AKI from 2010-2020

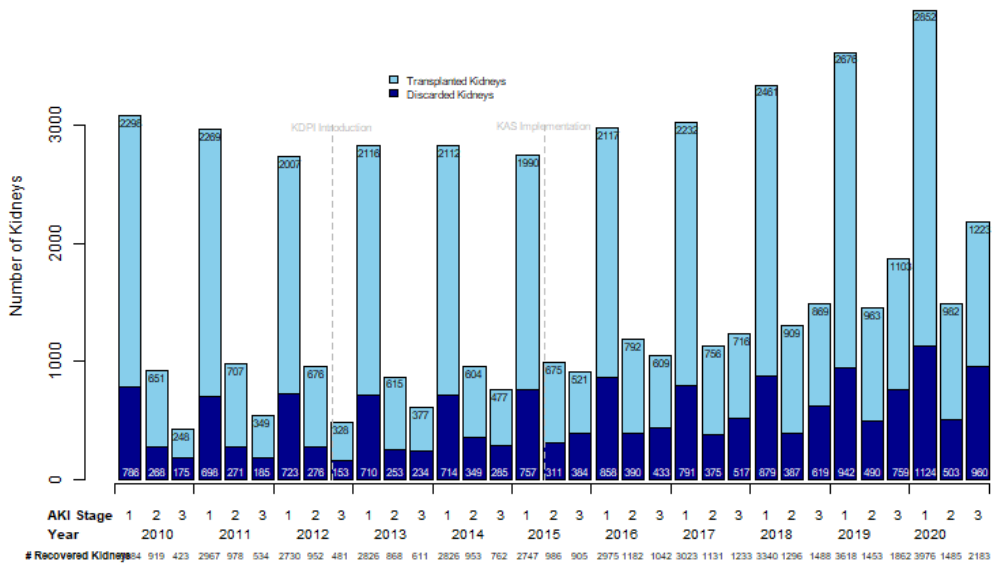
A. Number of Kidneys Procured



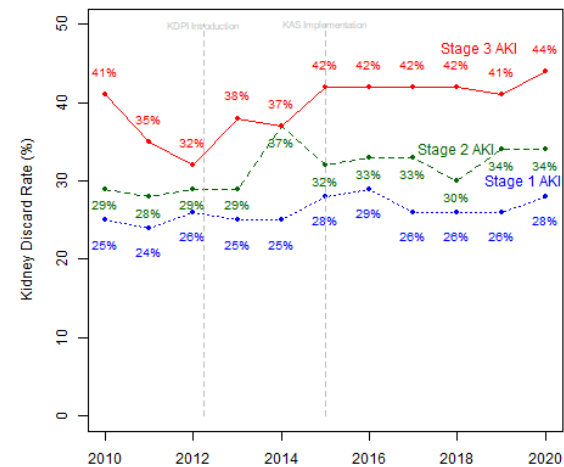
B. Kidney Procurement Rate



C. Number of Kidneys Discarded



D. Kidney Discard Rate

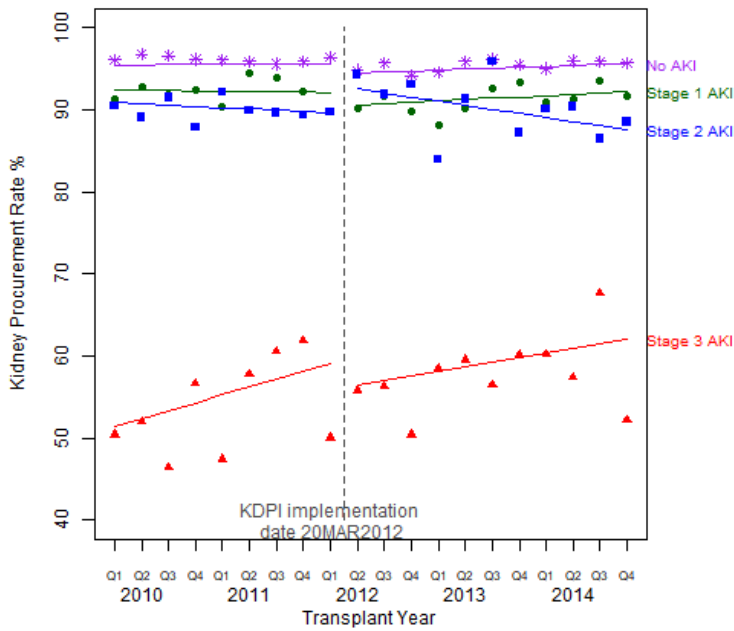


Legend: Figures 3A and 3C show the absolute counts of the number of kidneys procured and discarded from 2010-2020 by stages of AKI. Figures 3B and 3D show the proportion of kidneys procured and discarded from 2010-2020 by stages of AKI.

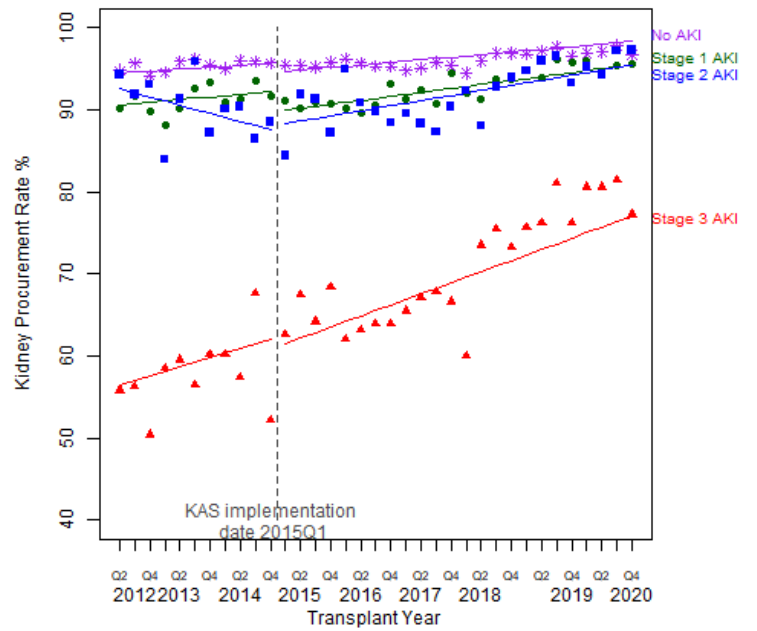
Abbreviations: AKI, acute kidney injury

Figure 4. Interrupted Time Series* of Kidney Procurement and Discard by Stages of AKI after Introduction of KDPI and Implementation of KAS

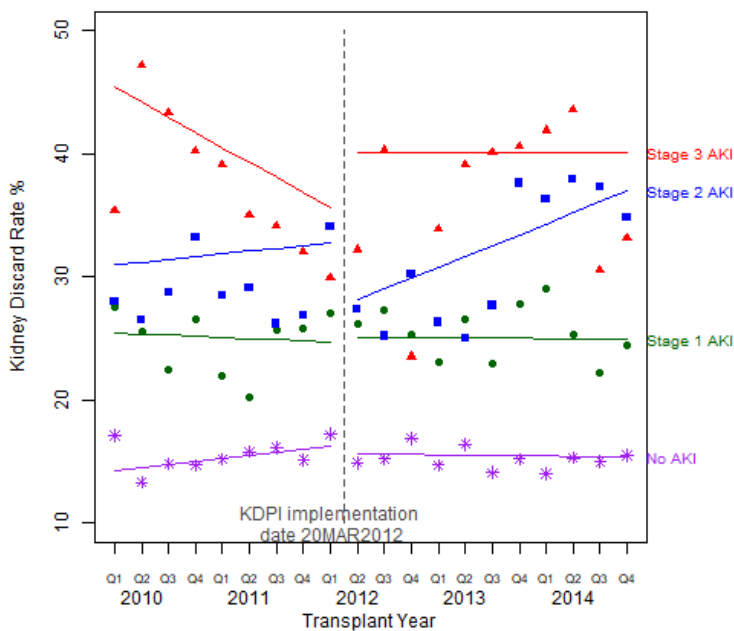
A. Kidney Procurement Rate Before and After Introduction of KDPI



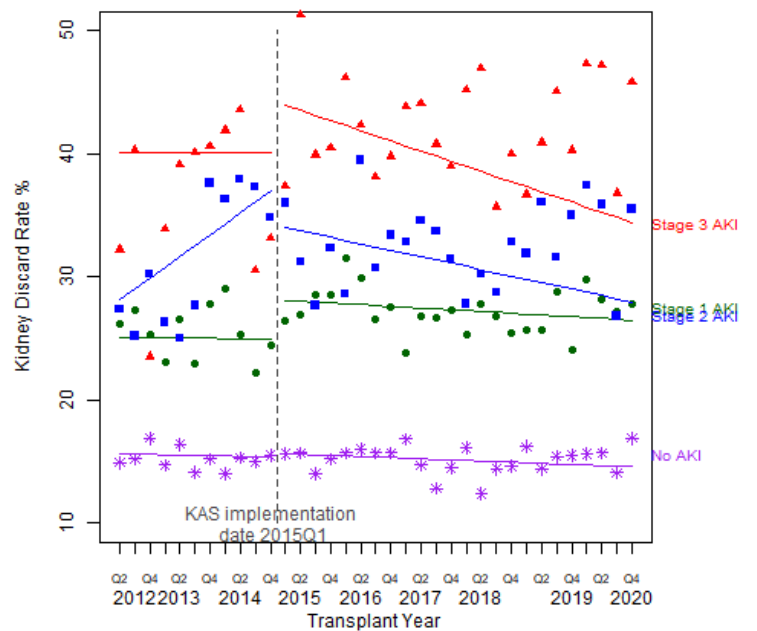
B. Kidney Procurement Rate Before and After Implementation of KAS



C. Kidney Discard Rate Before and After Introduction of KDPI



D. Kidney Discard Rate Before and After Implementation of KAS



* Points represent observed rates per quarter. Lines represent predicted rates from ITS analysis

The dotted vertical lines indicate the introduction of KDPI or the implementation of KAS

Abbreviations: AKI, acute kidney injury; KAS, Kidney Allocation System; KDPI, Kidney Donor Profile Index

See Table S3 for ITS Effect estimates and Figure S1 for a graphical explanation of ITS.