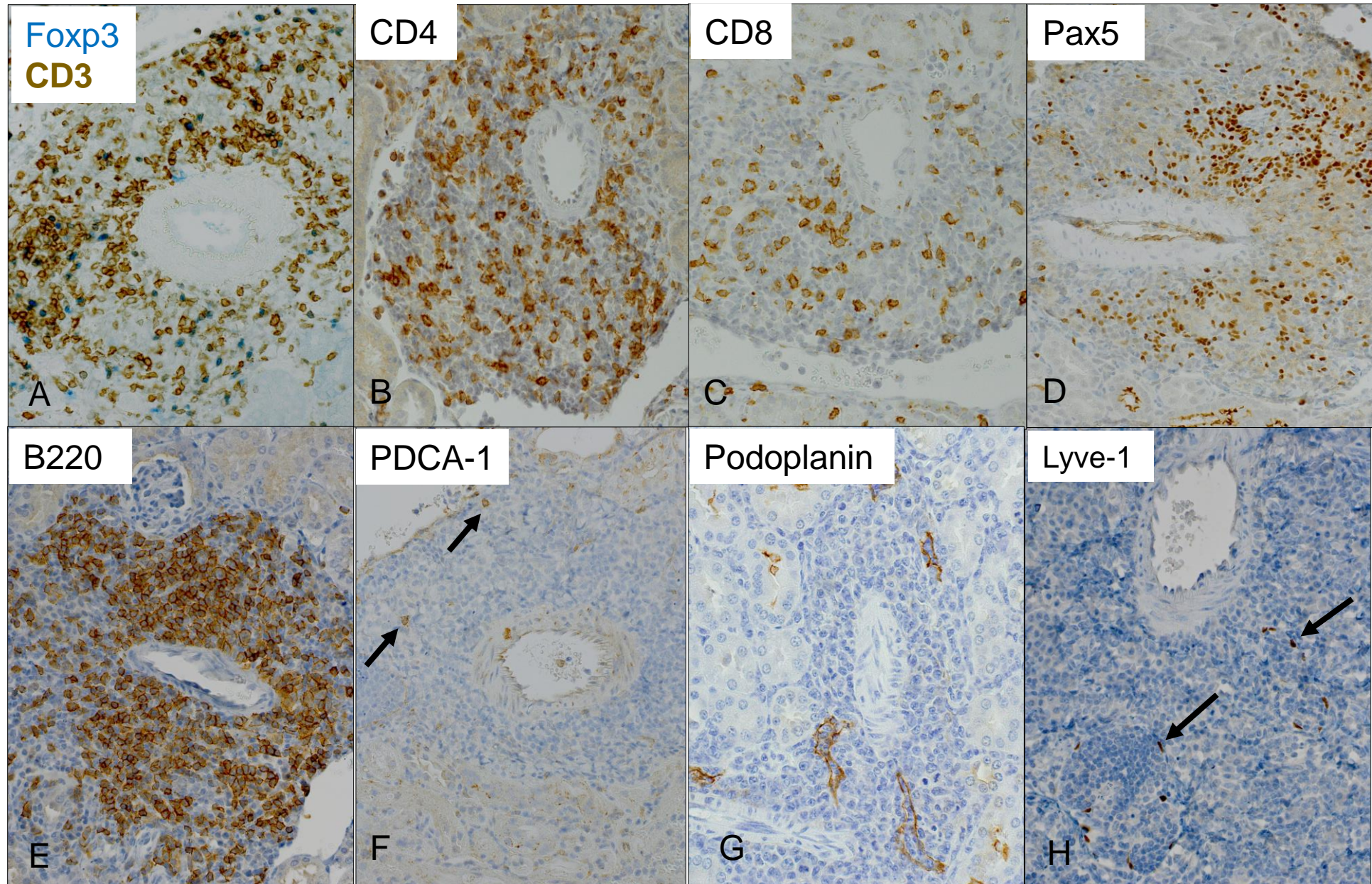
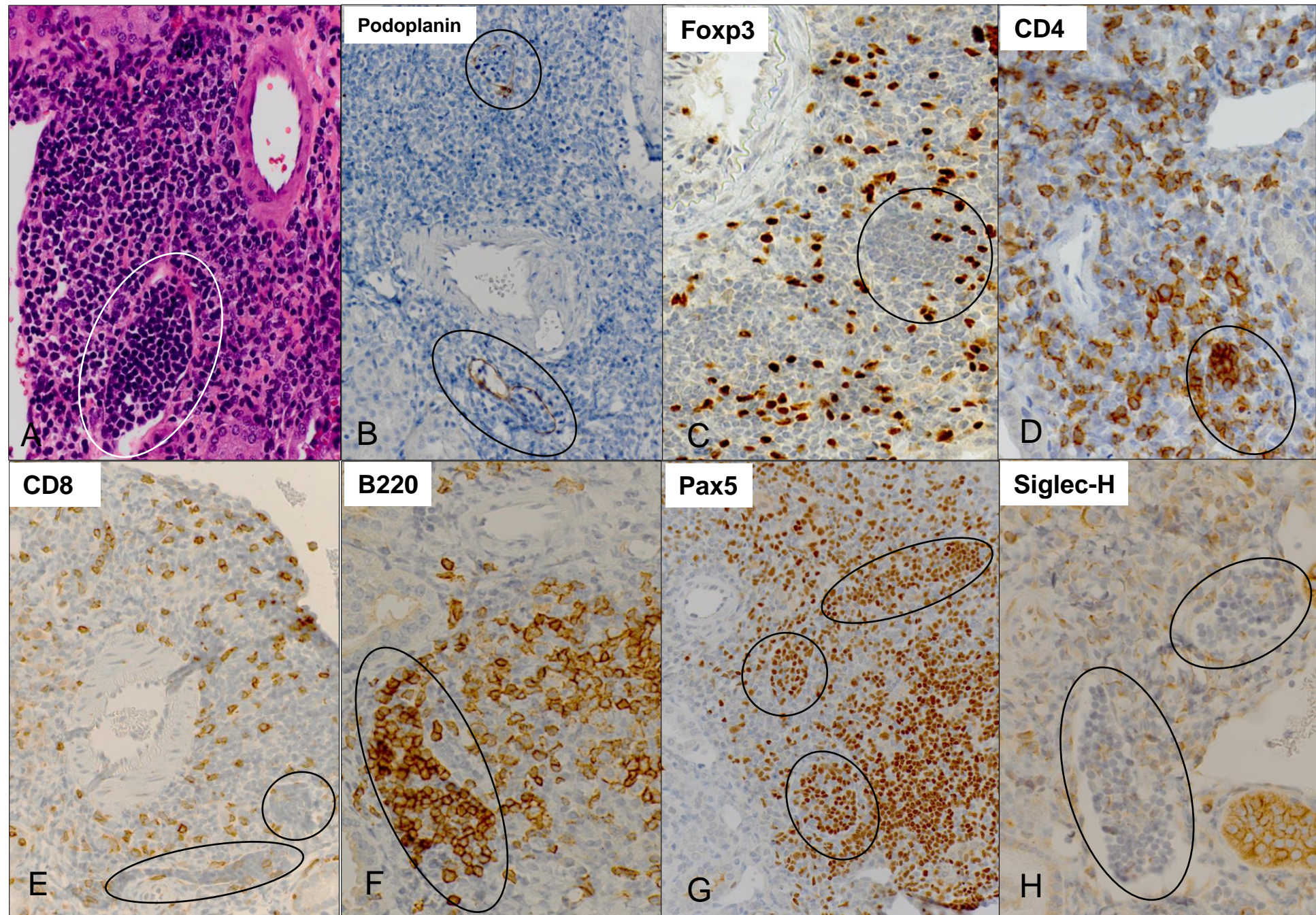


Supplemental Figure 1



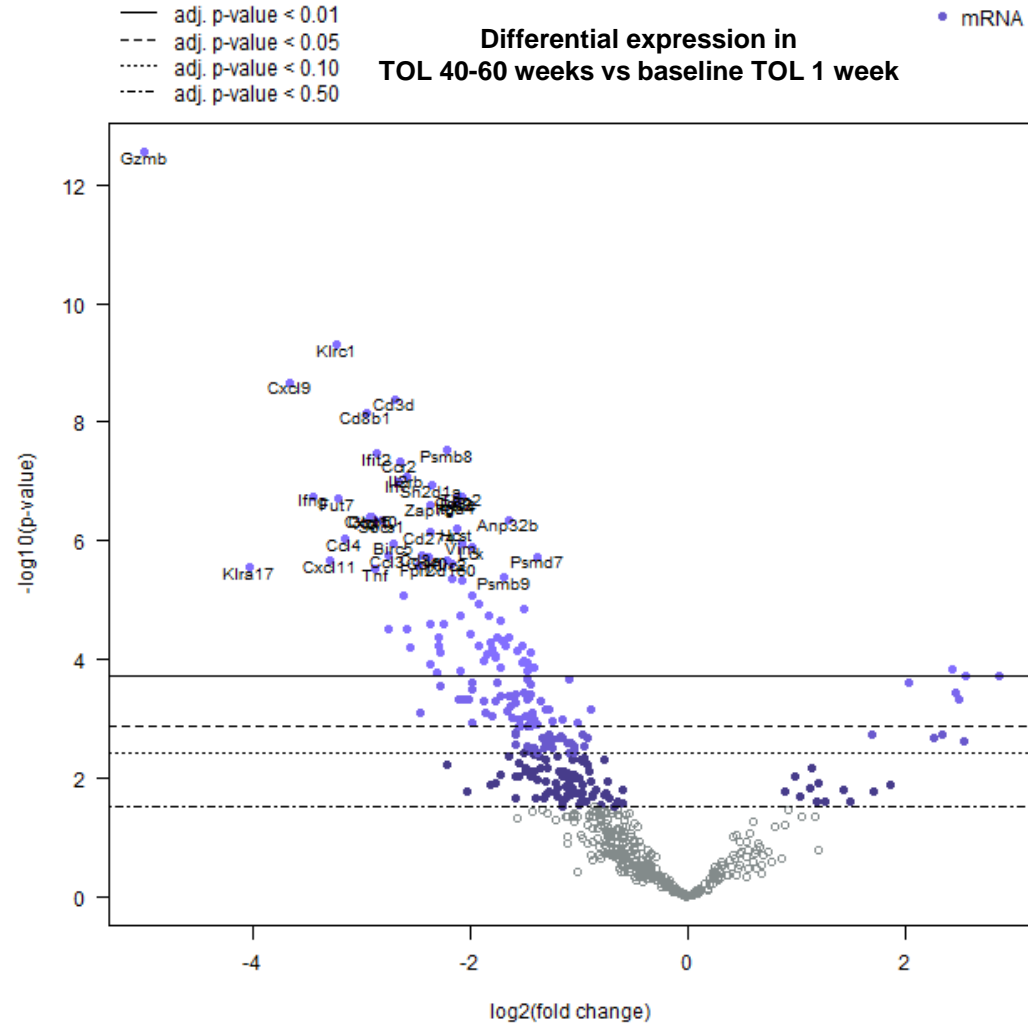
Supplemental Figure 2



Supplemental Figure 3

Genes increased in accepted grafts at 1 week

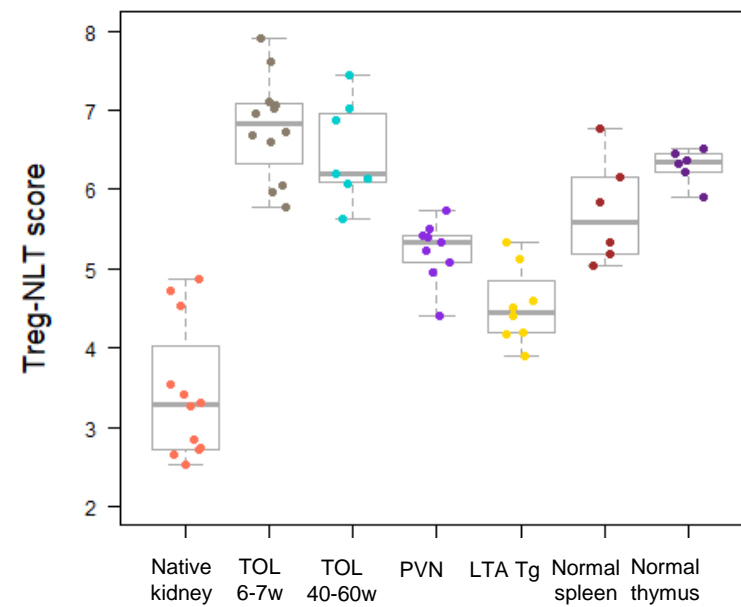
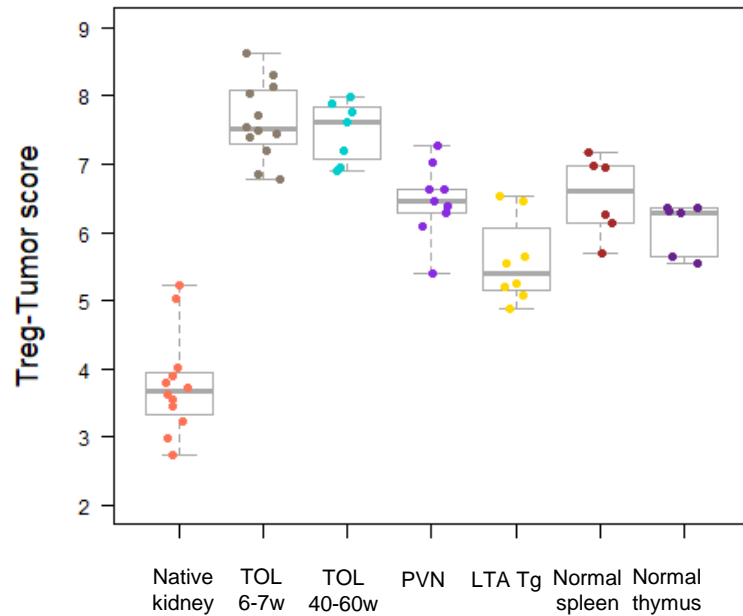
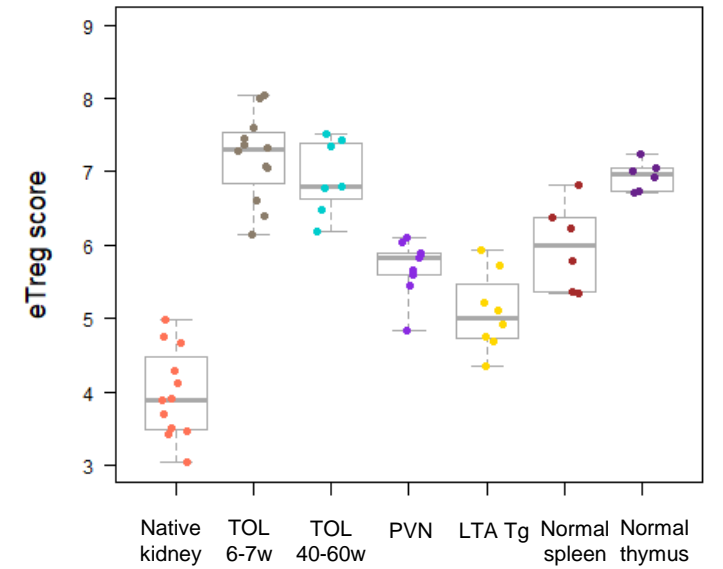
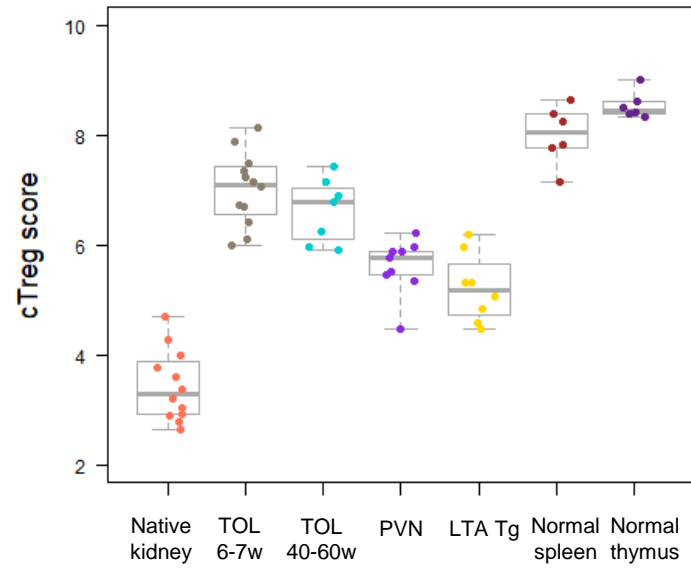
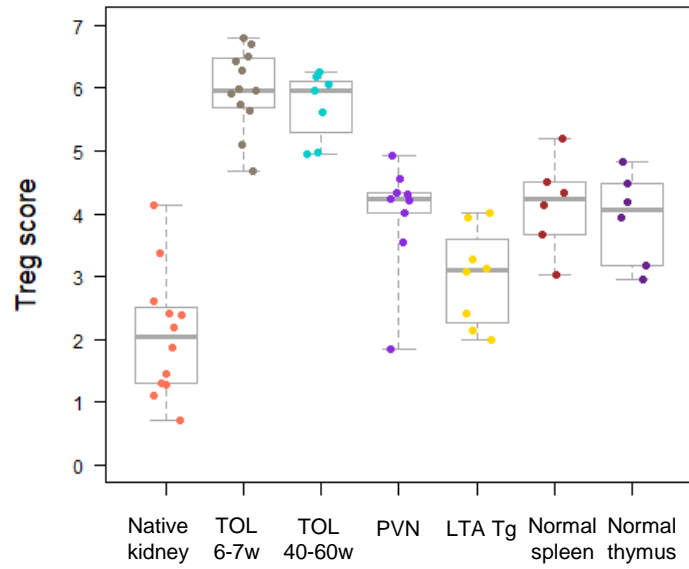
Gene	Log2 fold change	std error (log2)	BY.p.value
<i>Gzmb</i>	-5.01	0.469	1.21E-09
<i>Klrc1</i>	-3.23	0.396	1.07E-06
<i>Cxcl9</i>	-3.66	0.476	3.08E-06
<i>Cd3d</i>	-2.69	0.36	4.39E-06
<i>Cd8b1</i>	-2.95	0.403	5.86E-06
<i>Psmb8</i>	-2.21	0.322	2.04E-05
<i>Ifit2</i>	-2.87	0.421	2.04E-05
<i>Ccr2</i>	-2.64	0.393	2.45E-05
<i>Ii2rb</i>	-2.59	0.396	3.85E-05
<i>Irf7</i>	-2.67	0.412	4.20E-05
<i>Sh2d1a</i>	-2.35	0.366	4.63E-05
<i>Ifng</i>	-3.45	0.548	5.18E-05
<i>Tap2</i>	-2.07	0.329	5.18E-05
<i>Cd3e</i>	-2.12	0.337	5.18E-05
<i>Fut7</i>	-3.21	0.511	5.18E-05
<i>Bst2</i>	-2.13	0.339	5.18E-05
<i>Itga4</i>	-2.14	0.345	6.08E-05
<i>Zap70</i>	-2.37	0.383	6.08E-05
<i>Cxcl10</i>	-2.91	0.481	8.48E-05
<i>Gbp5</i>	-2.92	0.483	8.48E-05



Genes increased in accepted grafts at 40-60 weeks

Gene	Log2 fold change	std error (log2)	BY.p.value
<i>Blk</i>	2.86	0.695	0.0096
<i>Cd22</i>	2.55	0.62	0.00951
<i>Pax5</i>	2.5	0.658	0.0194
<i>Ms4a1</i>	2.47	0.634	0.0163
<i>Cxcl13</i>	2.44	0.582	0.00794
<i>Pou2af1</i>	2.03	0.504	0.0119

Supplemental Figure 4



Supplemental Table 1

Table 1. Morphologic and phenotypic differences between TOLS in kidney allografts and TLOs in different murine models

Features	TOLS in spontaneously accepted kidney allografts	TLOs	
		Native kidneys	
		Transgenic lymphotoxin alpha	Polyoma virus interstitial nephritis
Location and morphology	Periarterial or periarteriolar sheaths; other kidney structures normal	No specific location; subcapsular aggregates present; other kidney structures normal	No specific location; Interstitial infiltrates and nodular aggregates associated with tubular injury and epithelial nuclear inclusions
Compartments	No compartments	Present, germinal centers evident	Plasma cell-rich infiltrate and primarily B cells; germinal centers can be present
HEV	Absent	Present	May be present