

Supporting Information for ”Asymmetric interaction of a solar wind reconnecting current sheet and its magnetic hole with Earth’s bow shock and magnetopause”

Hadi Madanian^{1,2}, Terry Z. Liu³, Tai D. Phan⁴, Karlheinz J. Trattner¹,

Tomas Karlsson⁵, Michael W. Liemohn⁶

¹Laboratory for Atmospheric and Space Physics, University of Colorado, Boulder, CO, USA

²Space Science and Engineering Division, Southwest Research Institute, San Antonio, TX, USA

³University of California Los Angeles, Los Angeles, CA, USA

⁴Space Sciences Laboratory, University of California, Berkeley, CA, USA

⁵KTH Royal Institute of Technology, Stockholm, Sweden

⁶Department of Climate and Space Sciences and Engineering, University of Michigan, Ann Arbor, MI, USA

Contents of this file

1. Figures S1 to S2

Additional Supporting Information

1. Captions for Figures S1 to S2

Figure S1. Minimum variance analysis results on ACE and Wind magnetic field data. Panels show (a and d) magnetic field strength, (b and e) magnetic field in GSM, (c and f) magnetic field components in the minimum variance coordinates. Details of the MVA output are annotated on panels (c) and (f).

Figure S2. Cross-section view of the shock angle. The IMF is chosen before the onset of the RCS. Positions of MMS1, THEMIS and Cluster spacecraft are also indicated.

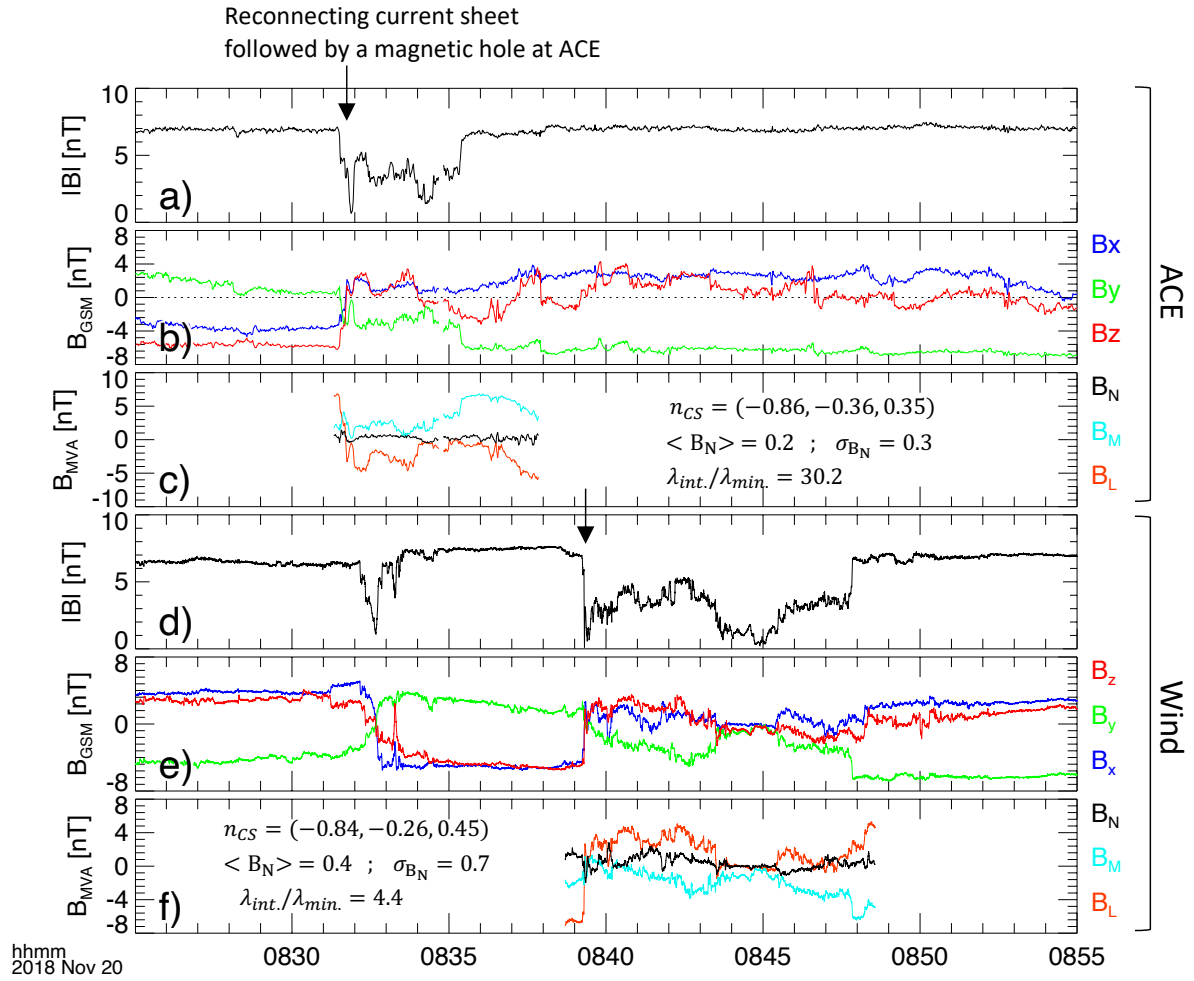


Figure S1. Minimum variance analysis results on ACE and Wind magnetic field data. Panels show (a and d) magnetic field strength, (b and e) magnetic field in GSM, (c and f) magnetic field components in the minimum variance coordinates. Details of the MVA output are annotated on panels (c) and (f).

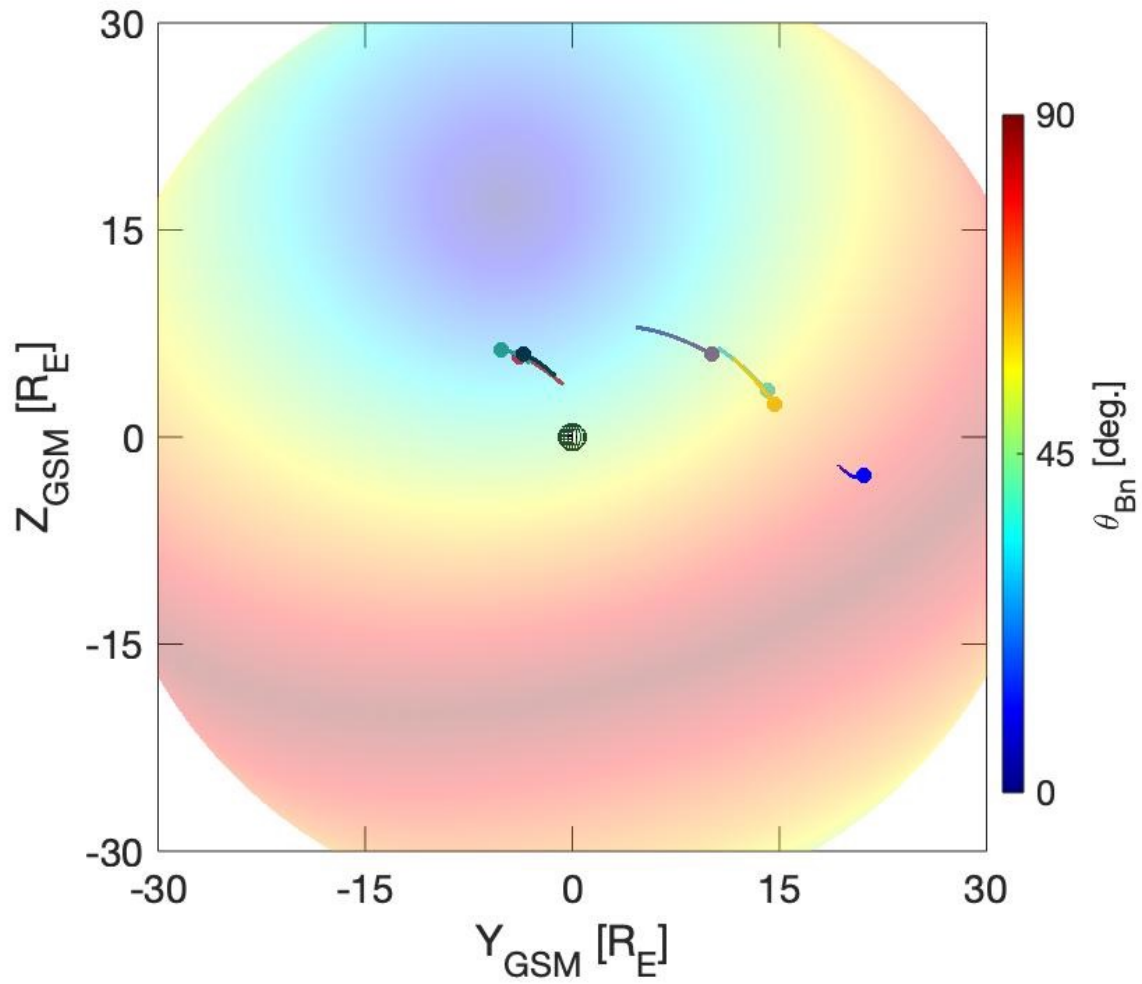


Figure S2. Cross-section view of the shock angle. The IMF is chosen before the onset of the RCS. Positions of MMS1, THEMIS and Cluster spacecraft are also indicated.