

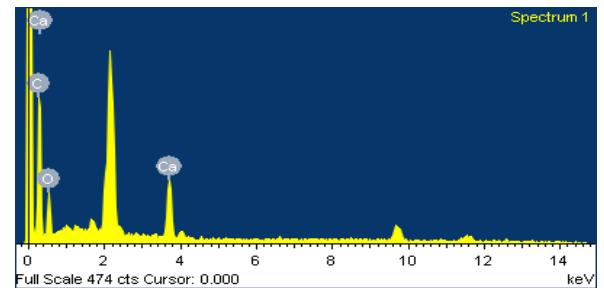
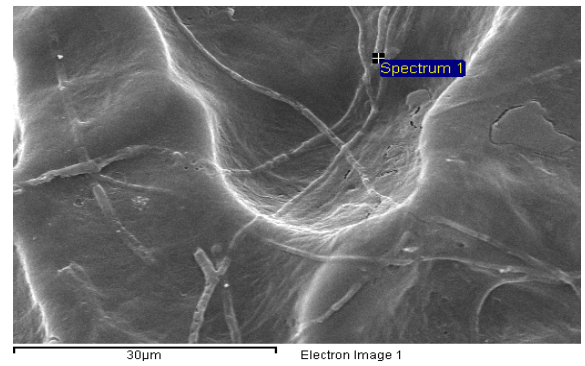
Scanning Electron Microscopy with Energy Disperse X-ray Analysis (SEM/EDX) at the area of pulpal blood vessels: Area 1

Spectrum processing :
 Peaks possibly omitted : 1.654, 2.147, 2.416, 9.699, 11.525 keV

Processing option : All elements analyzed (Normalised)
 Number of iterations = 3

Standard :
 C CaCO₃ 1-Jun-1999 12:00 AM
 O SiO₂ 1-Jun-1999 12:00 AM
 Ca Wollastonite 1-Jun-1999 12:00 AM

Element	Weight%	Atomic%
C K	38.75	52.30
O K	37.66	38.16
Ca K	23.59	9.54
Totals	100.00	



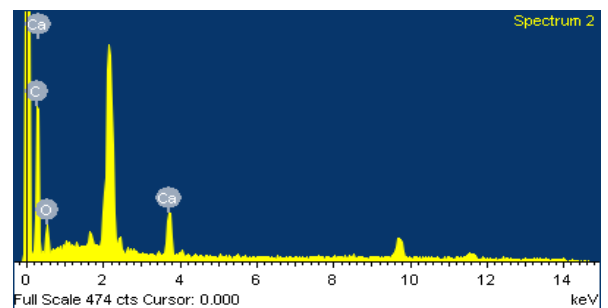
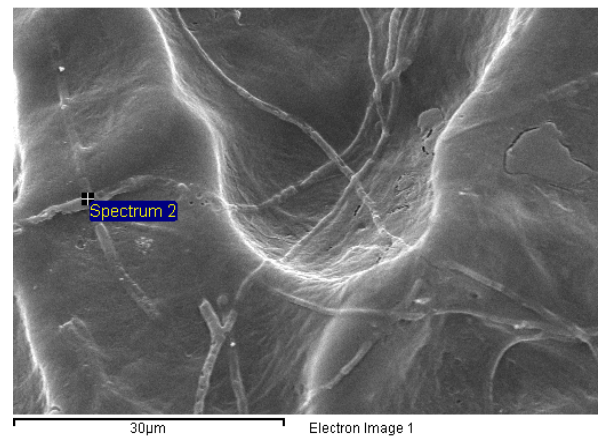
Scanning Electron Microscopy with Energy Disperse X-ray Analysis (SEM/EDX) at the area of pulpal blood vessels: Area 2

Spectrum processing :
 Peaks possibly omitted : 1.650, 2.143, 2.420, 9.711, 11.599 keV

Processing option : All elements analyzed (Normalised)
 Number of iterations = 3

Standard :
 C CaCO₃ 1-Jun-1999 12:00 AM
 O SiO₂ 1-Jun-1999 12:00 AM
 Ca Wollastonite 1-Jun-1999 12:00 AM

Element	Weight%	Atomic%
C K	50.87	64.39
O K	29.72	28.24
Ca K	19.41	7.36
Totals	100.00	



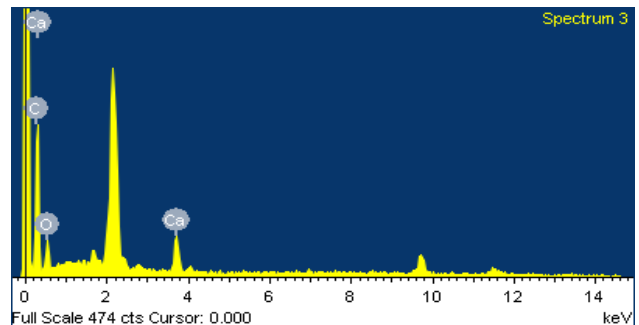
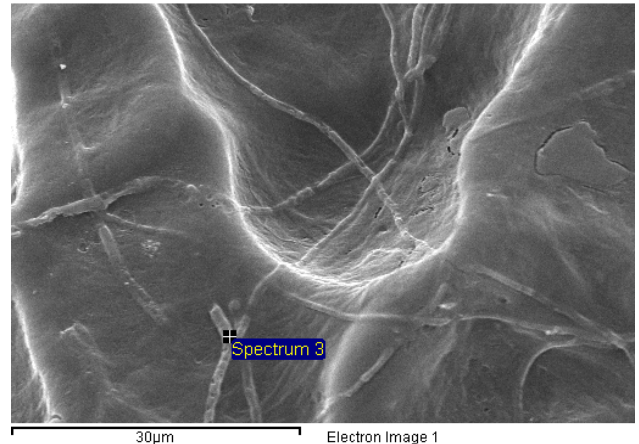
Scanning Electron Microscopy with Energy Disperse X-ray Analysis (SEM/EDX) at the area of pulpal blood vessels: Area 3

Spectrum processing :
Peaks possibly omitted : 1.649, 2.143, 9.710, 11.530 keV

Processing option : All elements analyzed (Normalised)
Number of iterations = 3

Standard :
C CaCO₃ 1-Jun-1999 12:00 AM
O SiO₂ 1-Jun-1999 12:00 AM
Ca Wollastonite 1-Jun-1999 12:00 AM

Element	Weight%	Atomic%
C K	52.74	65.22
O K	30.95	28.73
Ca K	16.31	6.04
Totals	100.00	



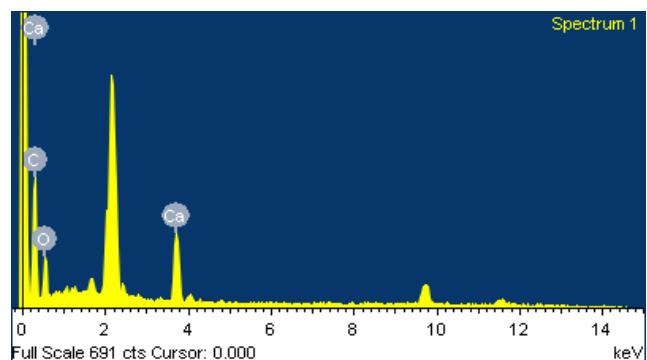
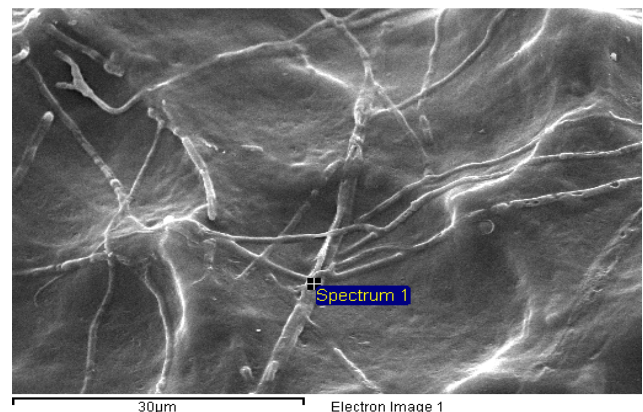
Scanning Electron Microscopy with Energy Disperse X-ray Analysis (SEM/EDX) at the area of pulpal blood vessels: Area 4

Spectrum processing :
Peaks possibly omitted : 1.654, 2.147, 2.416, 9.699, 11.525 keV

Processing option : All elements analyzed (Normalised)
Number of iterations = 3

Standard :
C CaCO₃ 1-Jun-1999 12:00 AM
O SiO₂ 1-Jun-1999 12:00 AM
Ca Wollastonite 1-Jun-1999 12:00 AM

Element	Weight%	Atomic%
C K	38.75	52.30
O K	37.66	38.16
Ca K	23.59	9.54
Totals	100.00	



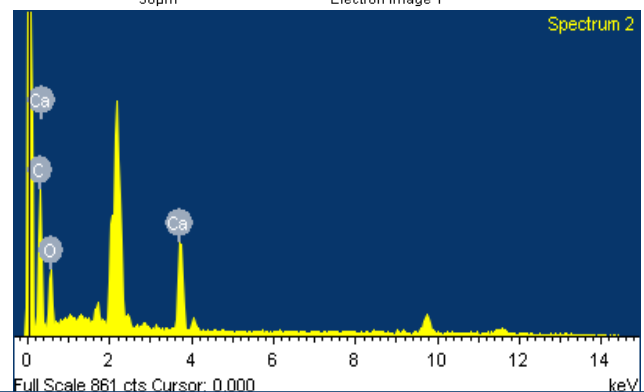
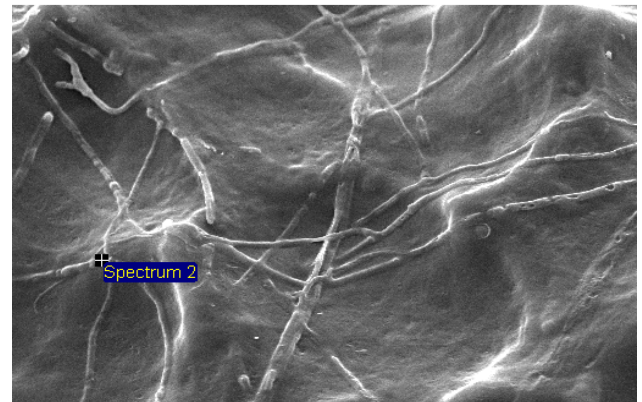
Scanning Electron Microscopy with Energy Disperse X-ray Analysis (SEM/EDX) at the area of pulpal blood vessels: Area 5

Spectrum processing :
Peaks possibly omitted : 1.654, 2.000, 2.148, 2.420, 9.702 keV

Processing option : All elements analyzed (Normalised)
Number of iterations = 4

Standard :
C CaCO₃ 1-Jun-1999 12:00 AM
O SiO₂ 1-Jun-1999 12:00 AM
Ca Wollastonite 1-Jun-1999 12:00 AM

Element	Weight%	Atomic%
C K	35.71	49.03
O K	39.58	40.80
Ca K	24.72	10.17
Totals	100.00	



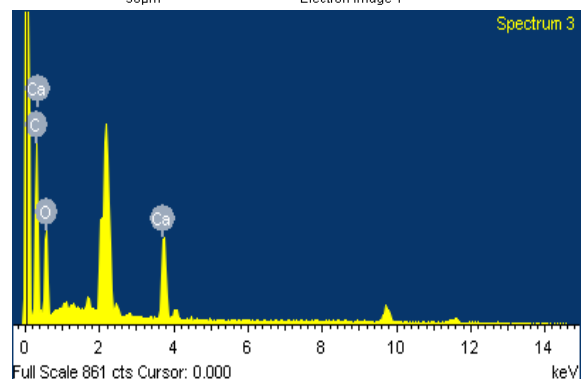
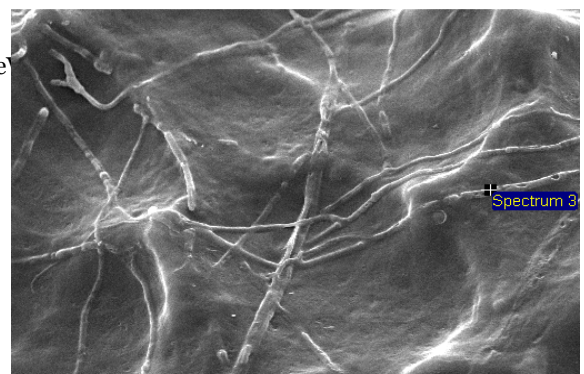
Scanning Electron Microscopy with Energy Disperse X-ray Analysis (SEM/EDX) at the area of pulpal blood vessels: Area 6

Spectrum processing :
Peaks possibly omitted : 1.659, 2.003, 2.148, 2.432, 9.710, 11.540 keV

Processing option : All elements analyzed (Normalised)
Number of iterations = 4

Standard :
C CaCO₃ 1-Jun-1999 12:00 AM
O SiO₂ 1-Jun-1999 12:00 AM
Ca Wollastonite 1-Jun-1999 12:00 AM

Element	Weight%	Atomic%
C K	36.65	48.63
O K	43.76	43.58
Ca K	19.59	7.79
Totals	100.00	



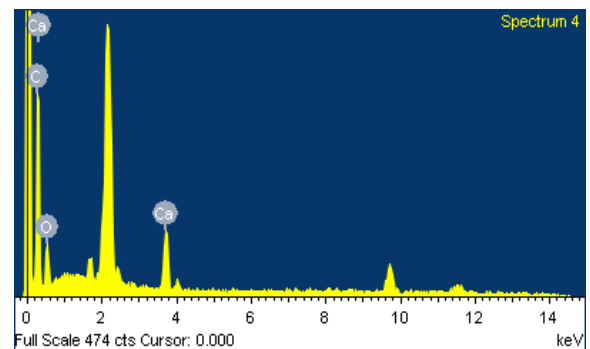
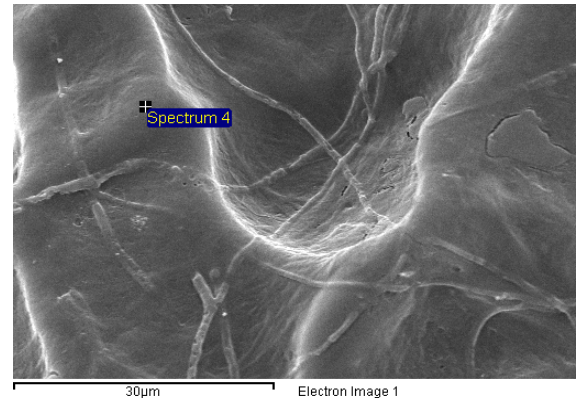
Scanning Electron Microscopy with Energy Disperse X-ray Analysis (SEM/EDX) at the area of root dentin: Area 1

Spectrum processing :
Peaks possibly omitted : 1.660, 2.144, 2.415, 2.815, 9.711, 11.580 keV

Processing option : All elements analyzed (Normalised)
Number of iterations = 3

Standard :
C CaCO₃ 1-Jun-1999 12:00 AM
O SiO₂ 1-Jun-1999 12:00 AM
Ca Wollastonite 1-Jun-1999 12:00 AM

Element	Weight%	Atomic%
C K	49.50	62.31
O K	32.84	31.03
Ca K	17.66	6.66
Totals	100.00	



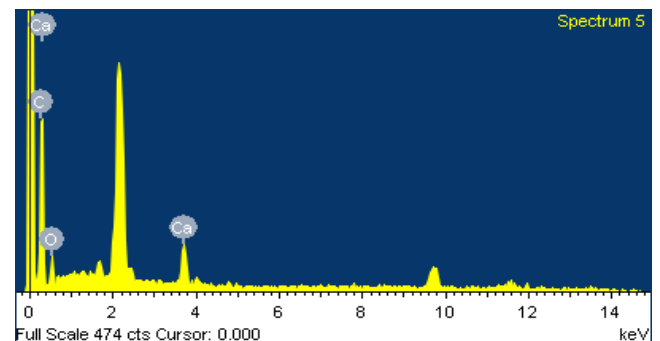
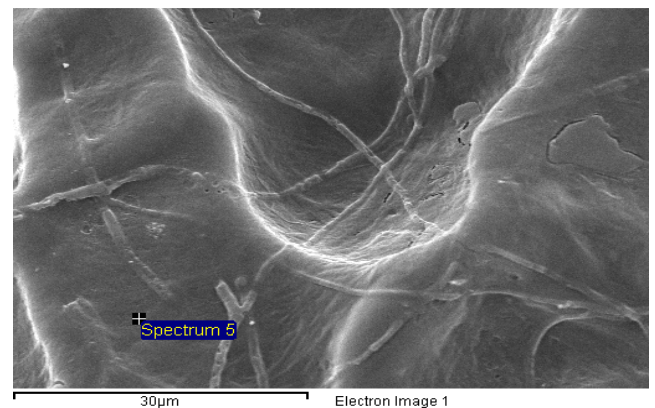
Scanning Electron Microscopy with Energy Disperse X-ray Analysis (SEM/EDX) at the area of root dentin: Area 2

Spectrum processing :
Peaks possibly omitted : 1.666, 2.148, 9.710, 11.565 keV

Processing option : All elements analyzed (Normalised)
Number of iterations = 3

Standard :
C CaCO₃ 1-Jun-1999 12:00 AM
O SiO₂ 1-Jun-1999 12:00 AM
Ca Wollastonite 1-Jun-1999 12:00 AM

Element	Weight%	Atomic%
C K	53.47	66.15
O K	29.73	27.62
Ca K	16.80	6.23
Totals	100.00	



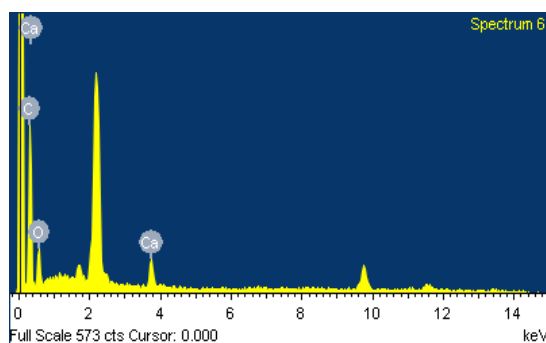
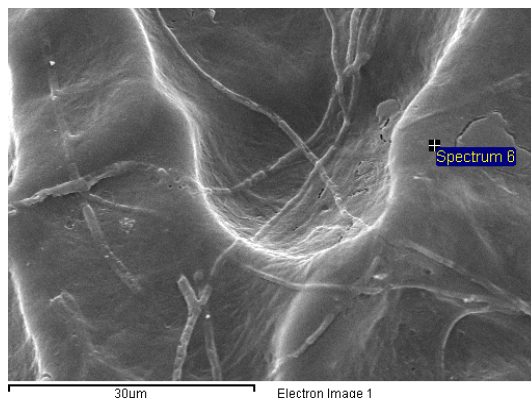
Scanning Electron Microscopy with Energy Disperse X-ray Analysis (SEM/EDX) at the area of root dentin: Area 3

Spectrum processing :
Peaks possibly omitted : 1.655, 2.145, 9.712, 11.496 keV

Processing option : All elements analyzed (Normalised)
Number of iterations = 3

Standard :
C CaCO₃ 1-Jun-1999 12:00 AM
O SiO₂ 1-Jun-1999 12:00 AM
Ca Wollastonite 1-Jun-1999 12:00 AM

Element	Weight%	Atomic%
C K	54.32	65.24
O K	33.83	30.50
Ca K	11.84	4.26
Totals	100.00	



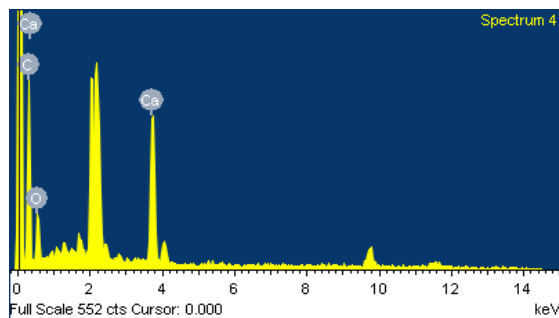
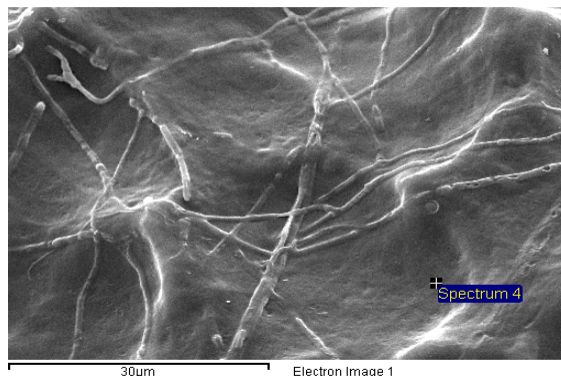
Scanning Electron Microscopy with Energy Disperse X-ray Analysis (SEM/EDX) at the area of root dentin: Area 4

Spectrum processing :
Peaks possibly omitted : 1.254, 1.672, 2.007, 2.159, 2.419, 9.709 keV

Processing option : All elements analyzed (Normalised)
Number of iterations = 3

Standard :
C CaCO₃ 1-Jun-1999 12:00 AM
O SiO₂ 1-Jun-1999 12:00 AM
Ca Wollastonite 1-Jun-1999 12:00 AM

Element	Weight%	Atomic%
C K	34.50	50.34
O K	31.95	35.00
Ca K	33.54	14.67



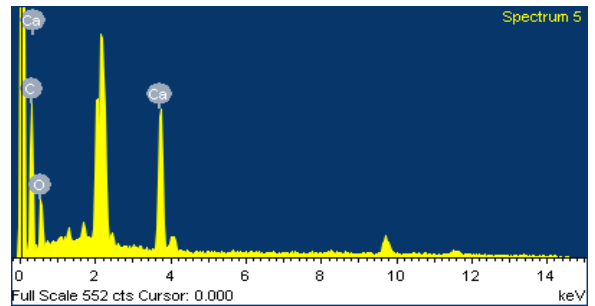
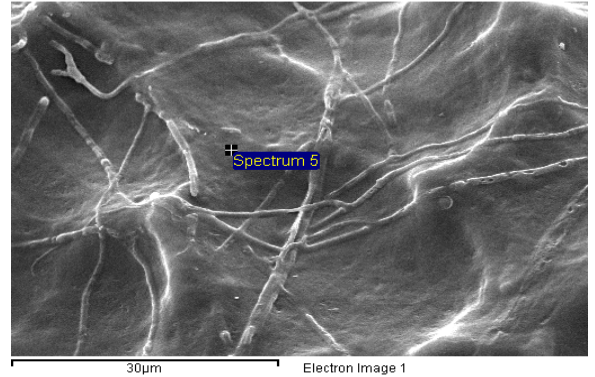
Scanning Electron Microscopy with Energy Disperse X-ray Analysis (SEM/EDX) at the area of root dentin: Area 5

Spectrum processing :
 Peaks possibly omitted : 1.655, 2.006, 2.152, 2.416, 9.693, 11.545 keV

Processing option : All elements analyzed (Normalised)
 Number of iterations = 3

Standard :
 C CaCO₃ 1-Jun-1999 12:00 AM
 O SiO₂ 1-Jun-1999 12:00 AM
 Ca Wollastonite 1-Jun-1999 12:00 AM

Element	Weight%	Atomic%
C K	33.46	48.58
O K	34.31	37.39
Ca K	32.23	14.02
Totals	100.00	



Scanning Electron Microscopy with Energy Disperse X-ray Analysis (SEM/EDX) at the area of root dentin: Area 6

Spectrum processing :
 Peaks possibly omitted : 1.660, 2.003, 2.150, 9.709, 11.485, 11.540 keV

Processing option : All elements analyzed (Normalised)
 Number of iterations = 4

Standard :
 C CaCO₃ 1-Jun-1999 12:00 AM
 O SiO₂ 1-Jun-1999 12:00 AM
 Ca Wollastonite 1-Jun-1999 12:00 AM

Element	Weight%	Atomic%
C K	42.34	54.92
O K	38.74	37.72
Ca K	18.92	7.36
Totals	100.00	

