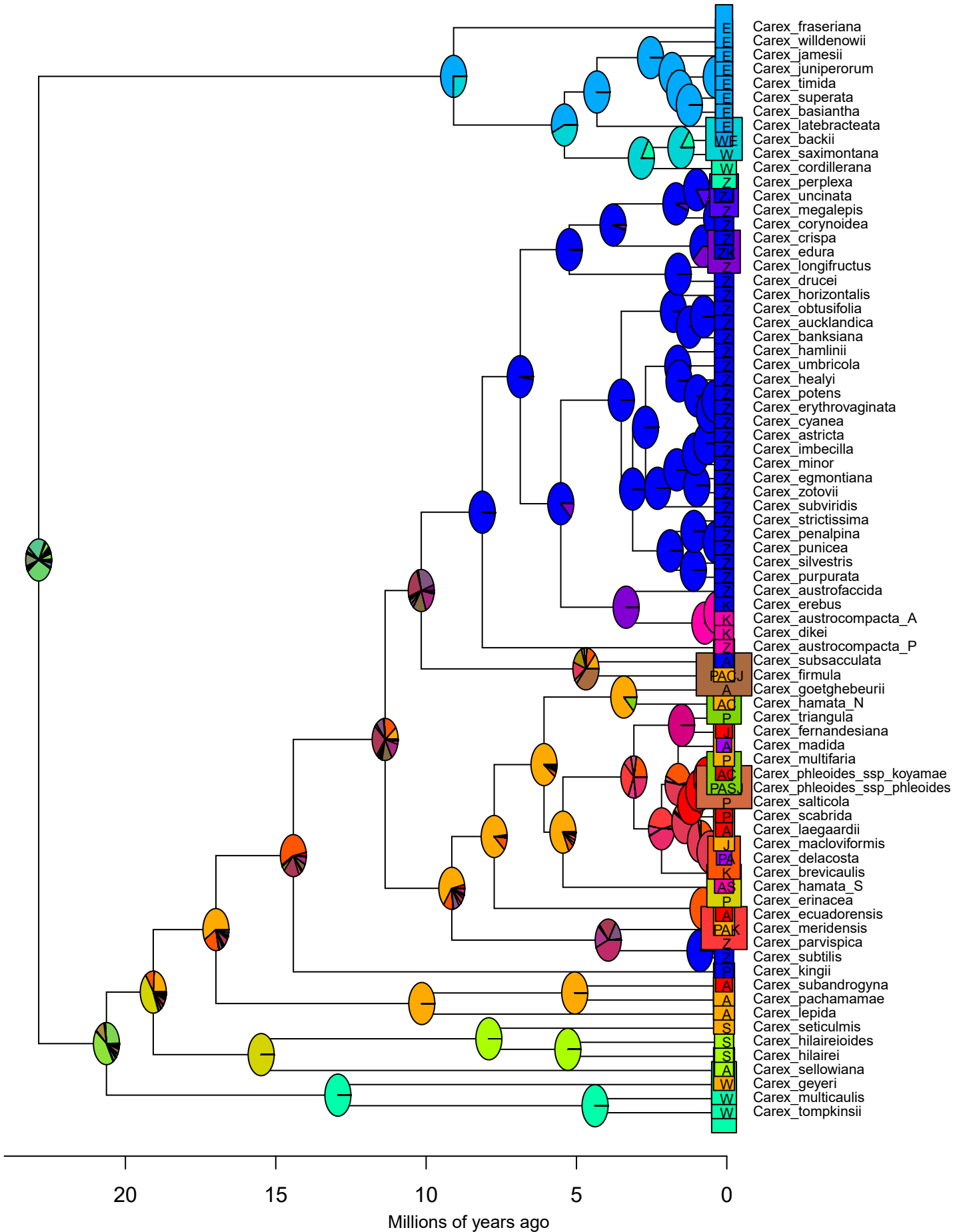


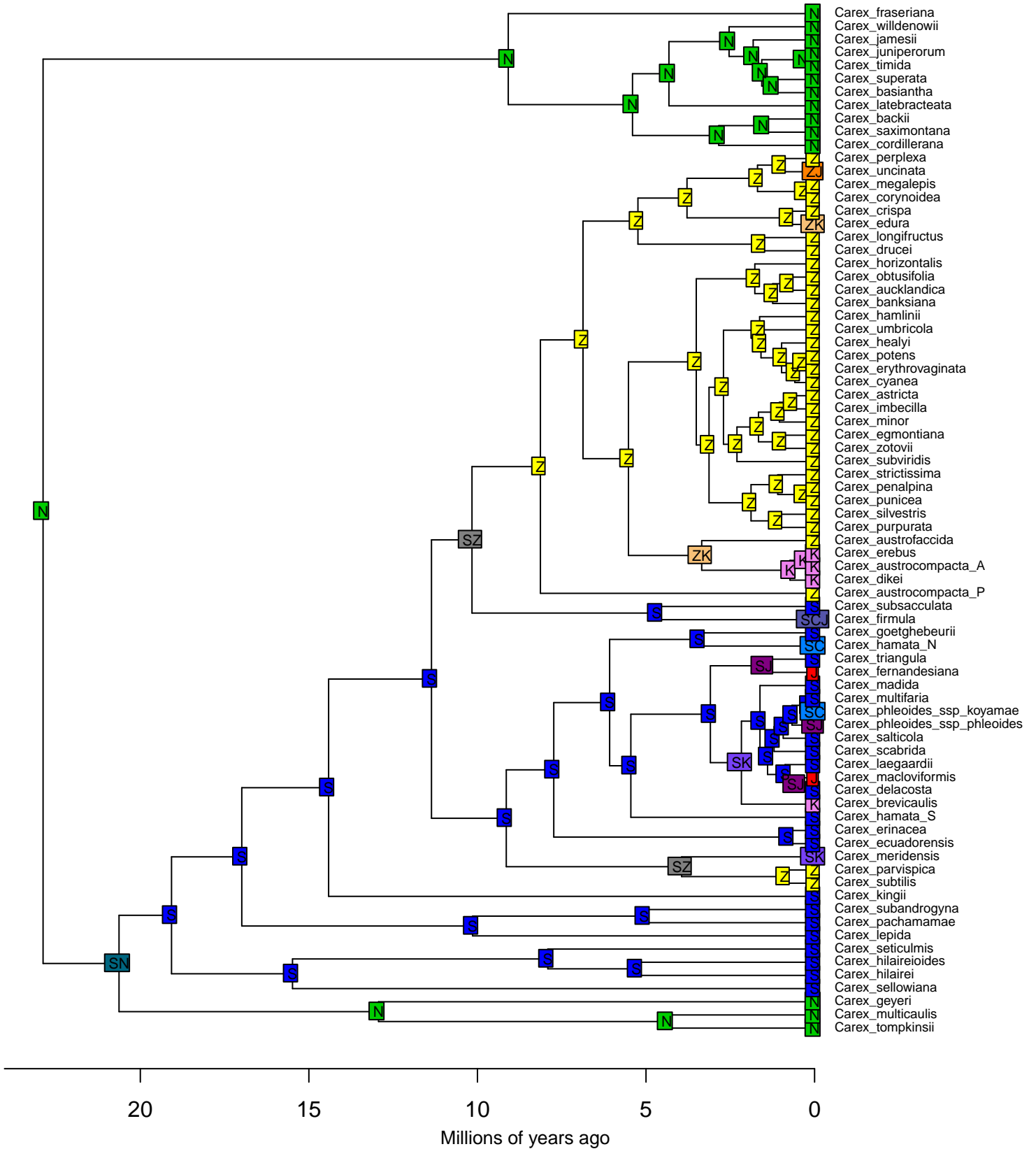
Fig. S11 (four figures). Raw results of BioGeoBEARS ancestral area reconstruction for our 9-area and 6-area analyses.

García-Moro & al., Biogeography and systematics of *Carex* subgenus *Uncinia* (Cyperaceae):
A unique radiation for the genus *Carex* in the Southern Hemisphere. – *Taxon*

BioGeoBEARS DEC M0
 ancstates: global optim, 4 areas max. d=0.0078; e=0; j=0; LnL=-146.71



BioGeoBEARS DIVALIKE M0
 ancstates: global optim, 4 areas max. d=0.0083; e=0; j=0; LnL=-84.01



BioGeoBEARS DIVALIKE M0
 ancstates: global optim, 4 areas max. d=0.0083; e=0; j=0; LnL=-84.01

