

DOI: 10.1002/ ((please add manuscript number))

Supplementary Information

Isolation of circulating tumor cells to diagnose melanoma and evaluate the efficacy of surgical resection using melanoma-specific microsystem

Yoon-Tae Kang¹, Anusha Mutukuri¹, Thomas Hadlock¹, Heather Fairbairn¹, Taylor R. Carle³, Shamileh Fouladdel¹, Vasudha Murlidhar¹, Aaron Kramer¹, Monica De Silva Reguera¹, Ebrahim Azizi², Alison Durham³, Scott A. Mclean^{3,} and Sunitha Nagrath^{1,4,*}*

¹Dr. Yoon-Tae Kang, Anusha Mutukuri, Thomas Hadlock, Heather Fairbairn, Shamileh Fouladdel, Vasudha Murlidhar, Monica De Silva, Aaron Kramer, and Prof. Sunitha Nagrath
Department of Chemical Engineering and Biointerface Institute, University of Michigan, 2800 Plymouth Road, NCRC B10-A184, Ann Arbor, MI 48109, USA
E-mail: snagrath@umich.edu

²Dr. Ebrahim Azizi
Biointerfaces Institute (BI), Translational Oncology Program (TOP), Department of Internal Medicine, University of Michigan, 2800 Plymouth Road, Ann Arbor, MI 48109, USA

³MD. Taylor R. Carle, Dr. Alison Durham, Dr. Scott A. Mclean,
Michigan Medicine Otolaryngology Clinic, Taubman Center, University of Michigan, Ann Arbor, MI 48109, USA
E-mail: E-mail: scotmcle@med.umich.edu

⁴Roger Cancer Center, University of Michigan, 1500 E Medical Center Dr. Ann Arbor, 48109

* Corresponding authors

Figures & Table

Fig. S1. Total melanoma CTC number changes before/after surgery3

Fig. S2. Reduction of circulating tumor cells depending on treatments4

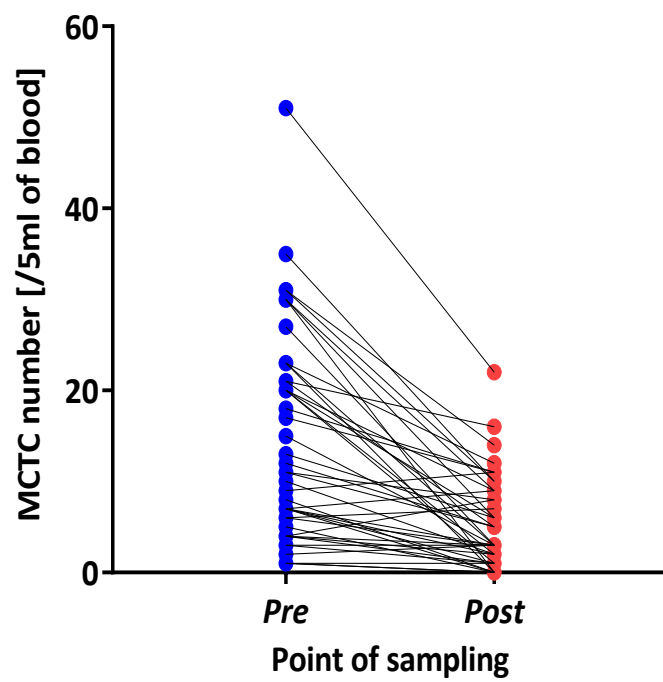


Figure S1. Total melanoma CTC number changes before/after surgery

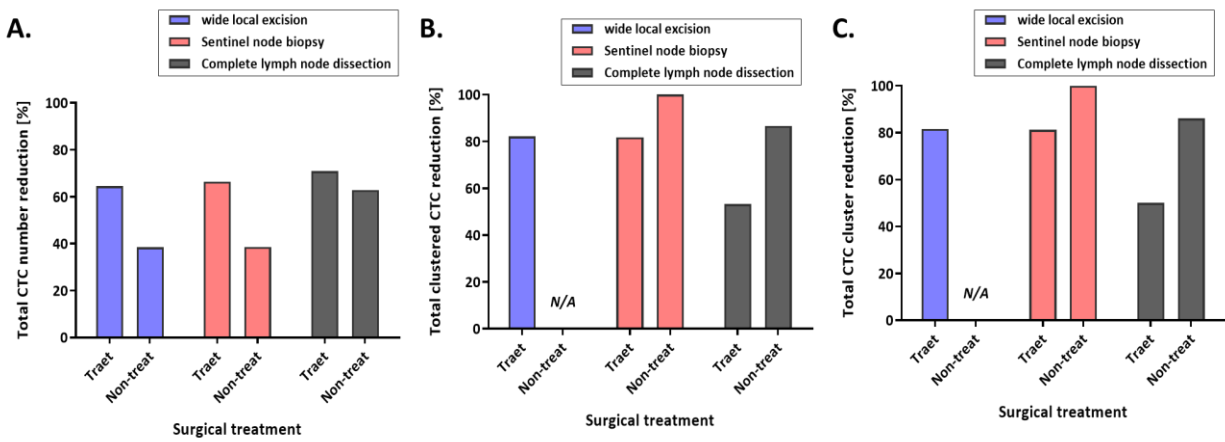


Figure S2. Reduction of circulating tumor cells depending on a type of treatment applied to melanoma patients: **(A)** reduction of total CTC number including CTCs in clusters; **(B)** CTC numbers in clusters; **(C)** total number of CTC clusters.