



Robust Causal Inference of Drug-drug Interactions

Journal:	<i>Statistics in Medicine</i>
Manuscript ID	SIM-22-0159.R2
Wiley - Manuscript type:	Research Article
Date Submitted by the Author:	21-Dec-2022
Complete List of Authors:	Shu, Di; University of Pennsylvania Perelman School of Medicine, Department of Biostatistics, Epidemiology and Informatics Han, Peisong; University of Michigan School of Public Health, Biostatistics Hennessy, Sean; University of Pennsylvania, Department of Biostatistics, Epidemiology and Informatics Miano, Todd; University of Pennsylvania, Department of Biostatistics, Epidemiology and Informatics
Keywords:	Causal inference, drug-drug interaction, multiple robustness, pharmacoepidemiology, propensity score weighting

SCHOLARONE™
Manuscripts

This is the author manuscript accepted for publication and has undergone full peer review but has not been through the copyediting, typesetting, pagination and proofreading process, which may lead to differences between this version and the [Version of Record](#). Please cite this article as doi: [10.1002/sim.9653](https://doi.org/10.1002/sim.9653)

This article is protected by copyright. All rights reserved.

Received ; | Revised ; | Accepted

DOI: xxx/xxxx

RESEARCH ARTICLE**Robust Causal Inference of Drug-drug Interactions**Di Shu^{*1,2,3,4} | Peisong Han⁵ | Sean Hennessy^{1,4} | Todd A Miano^{1,4}

¹Department of Biostatistics, Epidemiology and Informatics, University of Pennsylvania Perelman School of Medicine, Philadelphia, PA, USA

²Department of Pediatrics, University of Pennsylvania Perelman School of Medicine, Philadelphia, PA, USA

³Clinical Futures, Children's Hospital of Philadelphia, Philadelphia, PA, USA

⁴Center for Real-world Effectiveness and Safety of Therapeutics, University of Pennsylvania Perelman School of Medicine, Philadelphia, PA, USA

⁵Department of Biostatistics, University of Michigan, Ann Arbor, Michigan, USA

Correspondence

*Di Shu, Department of Biostatistics, Epidemiology and Informatics, Perelman School of Medicine, University of Pennsylvania, 423 Guardian Drive Philadelphia, PA 19104-6021, USA
Email: di.shu@penmedicine.upenn.edu

There is growing interest in developing causal inference methods for multi-valued treatments with a focus on pairwise average treatment effects. Here we focus on a clinically important, yet less-studied estimand: causal drug-drug interactions (DDIs), which quantifies the degree to which the causal effect of drug A is altered by the presence versus the absence of drug B. Confounding adjustment when studying the effects of DDIs can be accomplished via inverse probability of treatment weighting (IPTW), a standard approach originally developed for binary treatments and later generalized to multi-valued treatments. However, this approach generally results in biased results when the propensity score model is misspecified. Motivated by the need for more robust techniques, we propose two empirical likelihood-based weighting approaches that allow for specifying a set of propensity score models, with the second method balancing user-specified covariates directly, by incorporating additional, nonparametric constraints. The resulting estimators from both methods are consistent when the postulated set of propensity score models contains a correct one; this property has been termed multiple robustness. In this paper, we derive two multiply-robust estimators of the causal DDI, and develop inference procedures. We then evaluate their finite sample performance through simulation. The results demonstrate that the proposed estimators outperform the standard IPTW method in terms of both robustness and efficiency. Finally, we apply the proposed methods to evaluate the impact of renin-angiotensin system inhibitors (RAS-I) on the comparative nephrotoxicity of nonsteroidal anti-inflammatory drugs (NSAID) and opioids, using data derived from electronic medical records from a large multi-hospital health system.

KEYWORDS:

Causal inference, drug-drug interaction, multiple robustness, pharmacoepidemiology, propensity score weighting

1 | INTRODUCTION

Causal inference methods are increasingly used to assess effects of treatments on health outcomes in both randomized clinical trials and observational studies.^{1,2} Although a substantial amount of research has focused on methodology for examining the comparative safety and effectiveness of one or more treatments of interest, considerably less attention has been given to causal inference of interactions, where the target of inference is an interaction contrast such as a difference-in-difference or a ratio-of-ratios.³ Control of confounding in the context of an interaction can be more complex relative to standard treatment comparisons because there are two sets of confounders to consider, one for each exposure participating in the interaction.^{3,4,2} An area where interaction causal inference is particularly important is the study of drug-drug interactions (DDIs),^{5,6} which account for an estimated 13% of adverse drug events in community-dwelling older adults.⁷ DDI occurs when the pharmacologic effect of a drug is altered by the coadministration of a second drug, through either a pharmacokinetic (the body's impact on the drug) and/or pharmacodynamic (the drug's impact on the body) mechanism; the affected drug is called the object (or victim) and the affecting drug is called the precipitant (or perpetrator). Causal inference methods for DDIs are useful for answering the following key question:⁵ To what degree does the DDI increase the absolute or relative risk of an adverse drug event?

In principle, causal inference methods developed for multi-valued treatments can be applied to estimate the effects of DDIs, by noticing that a two-drug DDI fits into a 4-level treatment setting, when considering all four combinations of two drugs: i) object + precipitant, ii) object + control of precipitant, iii) control of object + precipitant, and iv) control of object + control of precipitant. In well-implemented randomized controlled trials with a 2×2 factorial design, a causal DDI can be nonparametrically estimated. Specifically, the investigator first estimates the mean of potential outcomes for each of the four treatment arms by the average of outcome data. A causal DDI interaction contrast, either a difference of differences or a ratio of ratios, is a function of the four averages and hence can be directly calculated from them. Such trials are, however, rarely if ever conducted. More commonly, observational studies are employed to examine DDI effects. In this context, a widely used approach to confounding adjustment is through inverse probability of treatment weighting (IPTW),^{8,1,9,10,11,2} originally developed for binary treatments and later extended to multi-valued treatments.^{12,13} For each individual, the investigator first estimates the weight by the reciprocal of the estimated probability of receiving the treatment level that this individual actually received, i.e., the estimated propensity score. Then, the investigator estimates the causal DDI using the four weighted averages of outcome data corresponding to four treatment levels, i.e., treating the weighted sample data as if they were collected from a 2×2 factorial trial.

One advantage of the IPTW approach is that the possibly complex outcome model is left completely unspecified. Instead, only a propensity score model needs to be specified. In many applications, it is more feasible to model the probability of receiving treatment than to model the outcome process, for example, in pharmacoepidemiologic studies with common treatments and rare adverse events. There is growing interest in developing methods for propensity score estimation with multi-valued treatments.^{14,15,16,17,18} We take a different weighting approach based on empirical likelihood^{19,20,21,22} to make use of a set of propensity score model simultaneously, with an option to directly balance

distributions of user-specified covariates. Our work was motivated by the need to increase the chance of correctly modeling the true treatment decision process, which is generally unknown in observational studies. It has long been recognized that model selection is one of the most challenging steps of applied causal inference. While failing to include important confounders can result in bias, adding additional variables into an existing model can paradoxically increase bias.^{23,24} For example, including a variable that is a collider, an intermediate variable, or an instrumental variable in the presence of unmeasured confounding can increase rather than decrease bias. Bias can also be increased if the added variable is incorrectly specified (e.g., assuming linearity for a nonlinear function). Variable selection of the propensity score model can also contribute to decreased efficiency, as in the case of including a variable that is strongly related to the exposure but, unrelated to or only weakly related to, the outcome.²⁵ Even with the help of useful guidelines,^{26,25,27,28} it is often difficult to develop a final, correct propensity score model. Multiply robust estimation^{22,29,30,31,32,33} makes it possible not to rely on a single hopefully correct propensity score model, in the sense that its validity requires only one model among all candidate models be correctly specified. Moreover, there is no need to identify the correct model.

In this paper, we propose two multiply robust estimators of the causal DDI. Both estimators allow for specifying a set of propensity score models, by setting up a set of constraints on these models when maximizing the empirical likelihood. The first method extends empirical likelihood weights in Shu et al³³ to accommodate multi-valued treatments. As a major difference from the first method and the original empirical likelihood-based multiply robust method,^{22,29,30} the second proposed method imposes additional constraints to directly balance the distributions for user-specified covariates of interest. For each method, the resulting estimator of the causal DDI achieves statistical consistency when the postulated model set contains a correct one, thereby providing increased protection against model misspecification. To our knowledge, this work is the first to develop and evaluate multiply robust methods focusing on estimation of causal DDIs.

The remainder of this paper is organized as follows. In Section 2, we introduce the notations and estimand. In Section 3, we first describe the standard IPTW method for causal inference of DDIs that uses a single propensity score model, then propose two multiply robust approaches making use of a set of propensity score models. In Sections 4 and 5, we conduct simulations to assess the finite sample performance of the proposed methods compared with the IPTW method, with and without including a correctly specified propensity score model in the set of postulated models, respectively. In Section 6, we apply the proposed methods to estimate the causal interaction between nonsteroidal anti-inflammatory drugs (NSAID) and renin-angiotensin system inhibitors (RAS-I) with regard to acute kidney injury (AKI) outcomes in hospitalized patients. Specifically, we contrast the difference in AKI risk between NSAID versus oxycodone in patients treated with RAS-I and the difference in AKI risk between NSAID versus oxycodone in patients treated with amlodipine (an active comparator for RAS-I treatment). We conclude the paper with a discussion in Section 7.

2 | DATA STRUCTURE AND ESTIMAND

We begin by introducing the notation. In our two-drug DDI context, let A be the observed treatment indicator for the affected drug (also called object or victim) such that $A = 1$ if treated and $A = 0$ if untreated; let B be the observed

1
2
3 treatment indicator for the affecting drug (also called the precipitant or perpetrator) such that $B = 1$ if treated and
4 $B = 0$ if untreated. Let X be a vector of measured baseline covariates and Y the observed outcome.

5
6 Following the potential outcome framework in causal inference,^{34,35} let Y_{ab} represent the potential outcome for an
7 individual that would have been observed had we set the treatment levels to a and b for $a = 1$ (treated with the object)
8 or 0 (untreated with the object) and $b = 1$ (treated with the precipitant) or 0 (untreated with the precipitant). Each
9 individual has four potential outcomes, Y_{11} , Y_{10} , Y_{01} and Y_{00} , but only the one under the actually observed treatment
10 status can be observed. That is, $Y = Y_{ab}$ when $A = a$ and $B = b$; this is the consistency assumption in causal inference.²

11
12 Suppose we have an independent and identically distributed (i.i.d.) sample of size n . The observed data are
13 (Y_i, X_i, A_i, B_i) for the i th individual, where $i = 1, \dots, n$. We aim to use the observed data to estimate the causal effect
14 of DDI, θ , defined in the following general form:
15
16
17

$$18 \theta = [f\{E(Y_{11})\} - f\{E(Y_{01})\}] - [f\{E(Y_{10})\} - f\{E(Y_{00})\}], \quad (1)$$

19 where $f(\cdot)$ is a known monotone link function.

20
21 When $f(\cdot)$ is an identity link function, (1) reduces to a measure of interaction on the additive scale. That is, $\theta =$
22 $\{E(Y_{11}) - E(Y_{01})\} - \{E(Y_{10}) - E(Y_{00})\}$, where $E(Y_{11}) - E(Y_{01})$ represents the average causal effect of the object
23 had the entire population been treated with the precipitant, and $E(Y_{10}) - E(Y_{00})$ represents the average causal effect
24 of the object had the entire population been untreated with the precipitant. A non-zero θ suggests that the presence of
25 the precipitant alters the magnitude of the effect of the object. In other words, the DDI does exist. Equivalently, θ can
26 be written as $\{E(Y_{11}) - E(Y_{10})\} - \{E(Y_{01}) - E(Y_{00})\}$, representing the difference between the average causal effect
27 of precipitant had the entire population been treated with the object and the average causal effect of precipitant had
28 the entire population been untreated with the object. With binary Y , θ can be interpreted as the causal risk difference
29 comparing object and its control in the presence of the precipitant, minus the causal risk difference comparing object
30 and its control in the absence of the precipitant. As noted by VanderWeele,³ the interaction is sometimes said to be
31 positive (or super-additive) if $\theta > 0$ and negative (or sub-additive) if $\theta < 0$. If $\theta = 0$, then there is no interaction on
32 the additive scale for risk differences.
33
34
35
36
37
38
39
40

41 When $f(\cdot)$ is a log link function and the outcome is binary, (1) reduces to a measure of interaction on the multiplica-
42 tive scale for risk ratios.³ In this case, $\exp(\theta)$ represents the ratio of two causal risk ratios, one risk ratio comparing
43 the object and its control in the presence of the precipitant and the other risk ratio comparing the object and its con-
44 trol in the absence of the precipitant. Similar to the DDI on the additive scale, this multiplicative interaction does not
45 change when exchanging the order of two drugs. It is said to be positive if $\exp(\theta) > 1$ and negative if $\exp(\theta) < 1$. If
46 $\exp(\theta) = 1$, i.e., $\theta = 0$, then there is no interaction on the multiplicative scale for risk ratios.
47
48
49
50
51
52
53
54
55
56
57
58
59
60

3 | CAUSAL INFERENCE OF DRUG-DRUG INTERACTIONS USING THE PROPENSITY SCORE

To consistently estimate the causal DDI measure θ in (1), it suffices to consistently estimate $E(Y_{ab})$ for each of the four treatment combinations: i) $a = 1, b = 1$, ii) $a = 0, b = 1$, iii) $a = 1, b = 0$, and iv) $a = 0, b = 0$. In randomized controlled trials with a 2×2 factorial design, $E(Y_{ab})$ can be nonparametrically estimated by the average outcome across individuals exposed to treatment level $A = a$ and $B = b$. In observational studies, this can be accomplished using adjusted averages that account for measured confounding. Here, we focus on confounding adjustment via weighting.

Specifically, we consider a general form of causal DDI estimator:

$$\hat{\theta} = [f\{\hat{E}(Y_{11})\} - f\{\hat{E}(Y_{01})\}] - [f\{\hat{E}(Y_{10})\} - f\{\hat{E}(Y_{00})\}], \quad (2)$$

where $\hat{E}(Y_{ab})$ is the weighting-based estimator of $E(Y_{ab})$ given by

$$\hat{E}(Y_{ab}) = \sum_{i: A_i=a, B_i=b} \hat{w}_i Y_i \quad (3)$$

for $a, b = 1, 0$.

To calculate \hat{w}_i in (3), we describe three propensity score-based weighting methods in next sections: the IPTW approach, the empirical likelihood approach, and a modified empirical likelihood approach with covariate balancing.

3.1 | The IPTW Approach Using A Single Propensity Score Model

We apply IPTW for multi-valued treatments, originally developed by Imbens¹² as an extension of the propensity score methodology for binary treatments, to calculate the weights for estimating the causal DDI. The reason for taking this approach is that a two-drug DDI can be understood as a multi-valued treatment setting, with a composite treatment (combining the object and precipitant) having four levels: $(a, b) = (1, 1), (0, 1), (1, 0)$ and $(0, 0)$.

Just like in IPTW estimation with binary treatments, causal inference assumptions (including consistency, exchangeability, and positivity²) are required for valid IPTW estimation with multi-valued treatments.^{12,15} The consistency assumption means the observed outcome equals the potential outcome under the actually observed treatment. The exchangeability assumption, termed weak unconfoundedness by Imbens, is satisfied if $T(a, b) \perp\!\!\!\perp Y_{ab} | \mathbf{X}$, where $T_i(a, b) = I(A_i = a, B_i = b)$. That is, adjusting for \mathbf{X} is sufficient to eliminate confounding bias; thus exchangeability is often also called an assumption of no unmeasured confounding. Here, the role of two exposures are symmetric in an interaction, and both exposures (or the composite exposure) are required to be unconfounded. These features distinguish interaction from the concept of effect modification.^{4,2} The positivity assumption states that each individual has a positive probability of receiving each treatment. Formally, $0 < P(A = a, B = b | \mathbf{X}) < 1$ for all \mathbf{X} and for $a, b = 1$ or 0 .

Provided that these standard causal inference assumptions are satisfied, propensity score weighting effectively eliminates confounding bias because the weighted data in theory emulate data that would have been collected from a 2×2 factorial trial.

Since the true treatment decision process is often unknown in observational studies, the propensity score $e_{ab}(\mathbf{X}) = P(A = a, B = b | \mathbf{X})$ needs to be estimated from the data. A modeling strategy is to fit a parametric propensity score model for $e_{ab}(\mathbf{X})$ that relates the treatment variable to baseline covariates \mathbf{X} . Let $\hat{P}(A_i = a, B_i = b | \mathbf{X}_i)$ denote the resulting estimate of the propensity score $P(A_i = a, B_i = b | \mathbf{X}_i)$ for the i th individual. Then the IPTW weights are given by

$$\hat{w}_{\text{IPTW},i} = \frac{1}{\hat{P}(A_i = a, B_i = b | \mathbf{X}_i)} \bigg/ \sum_{i: A_i=a, B_i=b} \frac{1}{\hat{P}(A_i = a, B_i = b | \mathbf{X}_i)} \quad \text{for } i \text{ with } A_i = a, B_i = b. \quad (4)$$

Substituting (4) into (3) gives a commonly-used ratio estimator in the IPTW estimation literature:¹⁰

$$\hat{E}(Y_{ab}) = \left\{ \sum_{i: A_i=a, B_i=b} \frac{Y_i}{\hat{P}(A_i = a, B_i = b | \mathbf{X}_i)} \right\} \bigg/ \left\{ \sum_{i: A_i=a, B_i=b} \frac{1}{\hat{P}(A_i = a, B_i = b | \mathbf{X}_i)} \right\}.$$

This estimator can be regarded as a Hájek-type estimator in the sampling literature.³⁶ It was found to have higher efficiency for estimating the average causal treatment effect than the Horvitz-Thompson-type counterpart.¹⁰

In practice, one single propensity score model is specified and fitted to the data, and multinomial logistic regression has been commonly employed with standard software packages such as the R function *multinom*. This model describes $e_{ab}(\mathbf{X})$ using three vectors of parameters $\boldsymbol{\gamma}_{11}$, $\boldsymbol{\gamma}_{01}$ and $\boldsymbol{\gamma}_{10}$:

$$P(A_i = a, B_i = b | \mathbf{X}_i) = \frac{\exp(\boldsymbol{\gamma}_{ab}^T \mathbf{X}_i)}{1 + \exp(\boldsymbol{\gamma}_{11}^T \mathbf{X}_i) + \exp(\boldsymbol{\gamma}_{01}^T \mathbf{X}_i) + \exp(\boldsymbol{\gamma}_{10}^T \mathbf{X}_i)} \quad \text{for } (a, b) = (1, 1), (0, 1) \text{ or } (1, 0)$$

and

$$P(A_i = a, B_i = b | \mathbf{X}_i) = \frac{1}{1 + \exp(\boldsymbol{\gamma}_{11}^T \mathbf{X}_i) + \exp(\boldsymbol{\gamma}_{01}^T \mathbf{X}_i) + \exp(\boldsymbol{\gamma}_{10}^T \mathbf{X}_i)} \quad \text{for } (a, b) = (0, 0),$$

where treatment (0,0) is considered the reference level; such choice of reference level is arbitrary. Write $\boldsymbol{\gamma} = (\boldsymbol{\gamma}_{11}^T, \boldsymbol{\gamma}_{01}^T, \boldsymbol{\gamma}_{10}^T)^T$. Fitting the model gives an estimate of $\boldsymbol{\gamma}$ and hence estimates of $e_{ab}(\mathbf{X})$ for $a, b = 1$ or 0 .

It is also possible to estimate $P(A_i = a, B_i = b | \mathbf{X}_i)$ by multiplying estimates for probabilities $P(A_i = a | \mathbf{X}_i)$ and $P(B_i = b | A_i = a, \mathbf{X}_i)$. This can be accomplished by fitting two binary logistic models, one relating A to \mathbf{X} and the other relating B to A and \mathbf{X} .

Substituting $\hat{w}_i = \hat{w}_{\text{IPTW},i}$ into (3) and then applying (2) gives the causal DDI estimator based on IPTW, denoted as $\hat{\theta}_{\text{IPTW}}$. The consistency of estimator $\hat{\theta}_{\text{IPTW}}$ requires a correctly specified propensity score model. Misspecifying the propensity score model generally leads to biased results.

3.2 | The Empirical Likelihood Approach Using Multiple Propensity Score Models

Placing the development in biased sampling context (e.g., the likelihood function contributed by treated individuals is only a biased version of the likelihood function that would have been obtained had all individuals been treated), empirical likelihood theory^{19,20} provides a different confounding adjustment approach from IPTW.^{37, Ch.19} To correct biased samples, Qin and Zhang³⁸ added two constraints to the biased likelihood to be maximized, with one constraint on the propensity score and the other on a function of covariates. Han and Wang²² and Han^{29,30,39} developed an extended

approach to incorporating a set of constraints on the propensity score model as well as a set of constraints on the outcome model.

With binary treatments, Shu et al³³ adapted this methodology by using propensity score constraints only. They did not use any outcome model constraint in order to get around the noncollapsibility issue for conditional and marginal Cox models. One practical advantage of their approach is, the resulting weights are generally applicable to other outcome types. Here, we first generalize this strategy to multi-valued treatment case and then use the resulting weights to estimate the causal DDI. Our method allows the investigator to postulate a set of propensity score models simultaneously. The resulting DDI estimator is statistically consistent when this model set contains a correct one. We describe the estimation procedures below.

3.2.1 | Postulating A Set of Propensity Score Models

Instead of using just one parametric model for the propensity score $e_{ab}(\mathbf{X}) = P(A = a, B = b | \mathbf{X})$, we postulate a set of J models to increase the chance of modeling $e_{ab}(\mathbf{X})$ correctly, where J is a user-specified, arbitrary positive integer. Let $\mathcal{E} = \{e_{ab}^j(\boldsymbol{\gamma}^j; \mathbf{X}) : j = 1, \dots, J\}$ denote this set of J postulated propensity score models, where $\boldsymbol{\gamma}^j$ is the vector of parameters for the j th model.

For $j = 1, \dots, J$, fitting the j th propensity score model gives an estimator of $\boldsymbol{\gamma}^j$, denoted as $\hat{\boldsymbol{\gamma}}^j$. We define $\hat{\boldsymbol{\gamma}} = (\hat{\boldsymbol{\gamma}}^{1\top}, \dots, \hat{\boldsymbol{\gamma}}^{J\top})^\top$. For $a, b = 1$ or 0 , we define $\hat{\mu}_{ab}^j = n^{-1} \sum_{i=1}^n e_{ab}^j(\hat{\boldsymbol{\gamma}}^j; \mathbf{X}_i)$ for $j = 1, \dots, J$ and

$$\hat{\mathbf{g}}_{ab}(\hat{\boldsymbol{\gamma}}; i) = (e_{ab}^1(\hat{\boldsymbol{\gamma}}^1; \mathbf{X}_i) - \hat{\mu}_{ab}^1, \dots, e_{ab}^J(\hat{\boldsymbol{\gamma}}^J; \mathbf{X}_i) - \hat{\mu}_{ab}^J)^\top \quad (5)$$

for $i = 1, \dots, n$. Note that the superscript j is needed for $\hat{\mu}_{ab}^j$ because $n^{-1} \sum_{i=1}^n e_{ab}^j(\hat{\boldsymbol{\gamma}}^j; \mathbf{X}_i)$ depends on the j th model and may not be the marginal probability $P(A = a, B = b)$. Consider an example with binary treatments. Suppose the true propensity score model is a standard logistic model with intercept whereas the j th postulated model is a logistic model without intercept. In this case, $\hat{\mu}_{ab}^j$ can be different from the marginal treatment prevalence; interestingly, any logistic model with intercept, even if misspecified, would ensure that $\hat{\mu}_{ab}^j$ equals the treatment prevalence through solving the estimating equation for the intercept parameter.

3.2.2 | Empirical Likelihood Weights

For individuals whose observed treatment level is (a, b) , consider a constrained optimization problem with respect to weights $\{w_i\}$ jointly:

$$\max \prod_{i: A_i=a, B_i=b} w_i$$

subject to constraints

$$w_i \geq 0, \quad \sum_{i: A_i=a, B_i=b} w_i = 1, \quad \text{and} \quad \sum_{i: A_i=a, B_i=b} w_i \hat{\mathbf{g}}_{ab}(\hat{\boldsymbol{\gamma}}; i) = \mathbf{0}. \quad (6)$$

Here w_i represents the discrete distribution of (Y_i, X_i) conditional on $A_i = a, B_i = b$.²² Solving this optimization problem amounts to finding the most plausible values of $\{w_i\}$ such that the resulting empirical likelihood (i.e., product of empirical probabilities) is maximized.

The third constraint in (6) is a weighted summation using data contributed by individuals with observed treatment level (a, b) only. By definition, $\sum_{i=1}^n \hat{g}_{ab}(\hat{\gamma}; i) = \mathbf{0}$, indicating that the unweighted summation using the entire sample also equals zero. Thus, the constraint $\sum_{i: A_i=a, B_i=b} w_i \hat{g}_{ab}(\hat{\gamma}; i) = \mathbf{0}$ produces weights to re-balance the group of treatment level (a, b) , an originally biased sample of the entire sample. The constraint $\sum_{i: A_i=a, B_i=b} w_i \hat{g}_{ab}(\hat{\gamma}; i) = \mathbf{0}$ can also be understood as an empirical data version of equation

$$E \left[\frac{e_{ab}^j(\gamma^j; \mathbf{X}) - E\{e_{ab}^j(\gamma^j; \mathbf{X})\}}{P(A = a, B = b | \mathbf{X})} \middle| A = a, B = b \right] = 0,$$

whose justification is the same as that for equation 5 of Han and Wang.²² For binary treatments, constraints (6) reduce to that considered by Shu et al,³³ as a modification to the original constraints in Han and Wang²² and Han,^{29,30,39} by not using constraints on conditional outcome models.

Solving the above constrained optimization gives the empirical likelihood weights for individuals $\{i : A_i = a, B_i = b\}$:

$$\hat{w}_{EL,i} = \left\{ \frac{1}{1 + \hat{\rho}_{ab}^T \hat{g}_{ab}(\hat{\gamma}; i)} \right\} / \sum_{i: A_i=a, B_i=b} \left\{ \frac{1}{1 + \hat{\rho}_{ab}^T \hat{g}_{ab}(\hat{\gamma}; i)} \right\} \text{ for } i \text{ with } A_i = a, B_i = b \quad (7)$$

where for $a, b = 1$ or 0 , $\hat{\rho}_{ab}$ is a $J \times 1$ vector that satisfies

$$\sum_{i: A_i=a, B_i=b} \frac{\hat{g}_{ab}(\hat{\gamma}; i)}{1 + \hat{\rho}_{ab}^T \hat{g}_{ab}(\hat{\gamma}; i)} = \mathbf{0}$$

and can be obtained via the convex minimization method of Han.²⁹

3.2.3 | Proposed Weighted Estimation Method

We propose to estimate the causal DDI by substituting the empirical likelihood weights $\hat{w}_i = \hat{w}_{EL,i}$ into (3) and then applying (2). Denote the resulting estimator as $\hat{\theta}_{EL}$. Applying existing proofs^{22,33} to each treatment level (a, b) reveals multiple robustness of $\hat{\theta}_{EL}$. That is, $\hat{\theta}_{EL}$ consistently estimates the causal DDI θ in (1), if the postulated set of propensity score models $\mathcal{E} = \{e_{ab}^j(\gamma^j; \mathbf{X}) : j = 1, \dots, J\}$ contains a correctly specified one. Specifically, the proposed weights are asymptotically equivalent to the IPTW weights obtained by fitting a correctly specified propensity score model. Therefore, weights $\hat{w}_{EL,i}$ are expected to eliminate confounding bias and lead to a consistent estimator of θ if the postulated set of propensity score models contains the true model, just like the IPTW weights from a correct propensity score model. The empirical likelihood approach can be understood as a way to automatically select a correct model from postulated models.

3.3 | Modified Empirical Likelihood Weights with Covariate Balancing

In practice, it is sometimes desirable to assure satisfactory covariate balance of certain user-specified, important covariates. However, using a good propensity score model (or even the true model) does not always produce optimal balances given that chance imbalances may still occur in finite samples. While our empirical likelihood weighting approach in Section 3.2 reduces model dependence by increasing the number of postulated models (and hence the chance of correctly estimating propensity scores), it does not directly, nonparametrically enforce the covariate balance.

In this section, we propose a modified empirical likelihood weighting approach, in order to achieve covariate balance for a set of user-specified covariates in finite samples. Let X_{s_1}, \dots, X_{s_P} denote this set of P covariates. For example, if we aim to balance the distributions of age and chronic kidney disease, then $P = 2$. To incorporate this need into estimating procedures described in Section 3.2, we now define a vector: $(X_{s_{1i}} - \bar{X}_{s_1}, \dots, X_{s_{Pi}} - \bar{X}_{s_P})^T$, where $X_{s_{li}}$ denotes covariate X_{s_l} for the i th individual, and $\bar{X}_{s_l} = \frac{1}{n} \sum_{i=1}^n X_{s_{li}}$ denotes the unweighted mean of the covariate X_{s_l} for the pooled sample across all four treatment combinations, for $l = 1, \dots, P$.

We add this vector into (5) and obtain an augmented version of function $g_{ab}(\cdot)$:

$$\hat{g}_{ab}^+(\hat{\gamma}; i) = (e_{ab}^1(\hat{\gamma}^1; \mathbf{X}_i) - \hat{\mu}_{ab}^1, \dots, e_{ab}^J(\hat{\gamma}^J; \mathbf{X}_i) - \hat{\mu}_{ab}^J, X_{s_{1i}} - \bar{X}_{s_1}, \dots, X_{s_{Pi}} - \bar{X}_{s_P})^T. \quad (8)$$

For individuals $\{i : A_i = a, B_i = b\}$, consider empirical likelihood weights defined through the following constrained optimization problem with respect to weights $\{w_i\}$ jointly:

$$\max \prod_{i: A_i=a, B_i=b} w_i$$

subject to constraints

$$w_i \geq 0, \quad \sum_{i: A_i=a, B_i=b} w_i = 1, \quad \text{and} \quad \sum_{i: A_i=a, B_i=b} w_i \hat{g}_{ab}^+(\hat{\gamma}; i) = \mathbf{0}. \quad (9)$$

The resulting empirical likelihood weights are

$$\hat{w}_{\text{mELCB},i} = \left\{ \frac{1}{1 + \hat{\eta}_{ab}^T \hat{g}_{ab}^+(\hat{\gamma}; i)} \right\} / \sum_{i: A_i=a, B_i=b} \left\{ \frac{1}{1 + \hat{\eta}_{ab}^T \hat{g}_{ab}^+(\hat{\gamma}; i)} \right\} \quad \text{for } i \text{ with } A_i = a, B_i = b \quad (10)$$

where for $a, b = 1$ or 0 , $\hat{\eta}_{ab}$ is a $(J + P) \times 1$ vector that satisfies

$$\sum_{i: A_i=a, B_i=b} \frac{\hat{g}_{ab}^+(\hat{\gamma}; i)}{1 + \hat{\eta}_{ab}^T \hat{g}_{ab}^+(\hat{\gamma}; i)} = \mathbf{0}$$

and can be obtained via convex minimization.²⁹

We propose to estimate the causal DDI by substituting the modified empirical likelihood weights $\hat{w}_i = \hat{w}_{\text{mELCB},i}$ into (3) and then applying (2). Denote the resulting estimator as $\hat{\theta}_{\text{mELCB}}$. Similar to justification in Section 3.2.3, multiple robustness of $\hat{\theta}_{\text{mELCB}}$ is guaranteed as long as $\mathcal{E} = \{e_{ab}^j(\gamma^j; \mathbf{X}) : j = 1, \dots, J\}$ contains a correctly specified propensity score model, because under this condition the proposed weights are asymptotically equivalent to the IPTW weights obtained from a correct model. In other words, including additional mean-centered covariates helps achieve covariate balance without breaking multiple robustness.

3.4 | Estimation of Variance and 95% Confidence Interval

We apply the nonparametric bootstrap method⁴⁰ for variance estimation of the IPTW estimator $\hat{\theta}_{\text{IPTW}}$ and the proposed empirical likelihood-based estimators $\hat{\theta}_{\text{EL}}$ and $\hat{\theta}_{\text{mELCB}}$. Unlike the robust variance estimation which tends to be conservative, the bootstrap method provides more efficient inference by taking the uncertainty in weight estimation into account.^{10,41,42} In the binary treatment setting of marginal hazard ratio estimation, prior simulations reported satisfactory performance of bootstrapping using 200 replicates, for both the IPTW and empirical likelihood methods.^{41,33}

We describe the bootstrap procedures using $\hat{\theta}_{\text{mELCB}}$ as an example. We first resample the observed data (Y_i, X_i, A_i, B_i) , $i = 1, \dots, n$ at the individual level with replacement R times to construct R bootstrap samples each having the same sample size n as the original data, where R is a user-specified positive integer (say, $R = 200$). For $r = 1, \dots, R$, let $\hat{\theta}_{\text{mELCB},r}$ denote the estimated causal DDI in the r th bootstrap sample using the modified empirical likelihood approach with covariate balancing; here the weights are estimated using the same r th bootstrap sample rather than the original data, which accounts for uncertainty in estimation of weights. Then, the bootstrap variance estimators for $\hat{\theta}_{\text{mELCB}}$ is given by

$$\widehat{\text{var}}(\hat{\theta}_{\text{mELCB}}) = \frac{1}{R-1} \sum_{r=1}^R \left(\hat{\theta}_{\text{mELCB},r} - \frac{1}{R} \sum_{r=1}^R \hat{\theta}_{\text{mELCB},r} \right)^2.$$

A normality-based 95% confidence interval for $\hat{\theta}_{\text{mELCB}}$ is $\hat{\theta}_{\text{mELCB}} \pm 1.96 \cdot \sqrt{\widehat{\text{var}}(\hat{\theta}_{\text{mELCB}})}$. Variance and confidence interval estimation for $\hat{\theta}_{\text{IPTW}}$ and $\hat{\theta}_{\text{EL}}$ can be obtained in the same manner.

3.5 | Balance Diagnosis in Two-drug Interaction Context

Balance diagnosis is an important component in a propensity score weighting-based analysis. McCaffrey et al¹⁵ described useful balance metrics for multiple treatments when using IPTW. They can be adapted to our two-drug DDI context and to other weighting methods. Here we focus on metrics using standardized mean bias.

For each treatment level (a, b) and each of the three methods (with \hat{w}_i given by $\hat{w}_{\text{IPTW},i}$, $\hat{w}_{\text{EL},i}$ and $\hat{w}_{\text{mELCB},i}$), balance for covariate X_k can be summarized by the following absolute standardized difference (also called population standardized bias¹⁵):

$$\text{PSB}_{ab,k} = |\bar{X}_{k,ab} - \bar{X}_k| / \hat{\sigma}_k,$$

where

$$\bar{X}_{k,ab} = \sum_{i: A_i=a, B_i=b} \hat{w}_i X_{ki}$$

is the weighted mean of this covariate within treatment group (a, b) , and \bar{X}_k and $\hat{\sigma}_k$ denote the unweighted mean and standard deviation of this covariate in the pooled sample across all four treatment levels $(a, b) = (1, 1), (0, 1), (1, 0)$ and $(0, 0)$.

A useful overall summary of balance across four treatment levels is

$$\text{PSB}_k = \max_{ab: a,b=1,0} \text{PSB}_{ab,k}.$$

The investigator can then report PSB_k across covariates before and after weighting. An absolute standardized difference larger than 0.2 was considered problematic.¹⁵

Notably, by (8) and (9), if a covariate X_k is in the set $\{X_{s_1}, \dots, X_{s_p}\}$ for which additional covariate balancing constraints are used, $\sum_{i: A_i=a, B_i=b} \hat{w}_{mELCB, i} (X_{ki} - \bar{X}_k) = \mathbf{0}$, leading to $\sum_{i: A_i=a, B_i=b} \hat{w}_{mELCB, i} X_{ki} = \bar{X}_k$ and hence $\bar{X}_{k, ab} = \bar{X}_k$ for the weighted sample based on the modified empirical likelihood approach. These results reveal the relation between the balance constraints with balance metrics $PSB_{ab, k}$ and PSB_k : the proposed modified empirical likelihood approach aims to optimize balance metrics $PSB_{ab, k}$ and PSB_k for those user-specified covariates.

Above balance metrics compare each treatment level with the unweighted, pooled sample across four treatment levels. It is also possible to check for covariate balance for each of the six pairwise comparisons: (1, 1) vs (1, 0), (1, 1) vs (0, 1), (1, 1) vs (0, 0), (1, 0) vs (0, 1), (1, 0) vs (0, 0) and (0, 1) vs (0, 0). Within each comparison, the standardized difference measure across covariates can be evaluated and a cutoff point at 0.1 is commonly used.⁴³

4 | SIMULATION STUDIES: WHEN THE POSTULATED SET OF PROPENSITY SCORE MODELS CONTAINS A CORRECT ONE

We conducted simulation studies to evaluate the finite sample performance of the proposed multiply robust estimators $\hat{\theta}_{EL}$ and $\hat{\theta}_{mELCB}$ in comparison to the standard IPTW estimator $\hat{\theta}_{IPTW}$.

4.1 | Data Generating Process: The True Model

For each individual, we first simulated a vector of covariates $\mathbf{X} = (X^{(1)}, X^{(2)}, X^{(3)}, X^{(4)}, X^{(5)})^T$. These covariates were independently simulated with $X^{(1)}$ following a Bernoulli distribution with probability 0.2; $X^{(2)}$ following a Bernoulli distribution with probability 0.4; $X^{(3)}$ following the standard normal distribution; $X^{(4)}$ following a uniform distribution ranging from -0.5 to 0.5; and $X^{(5)}$ following a unit exponential distribution.

We then simulated the treatment indicators A and B from the following multinomial logistic propensity score model:

$$P(A = a, B = b | \mathbf{X}) = \frac{Q_{ab}}{1 + Q_{11} + Q_{01} + Q_{10}} \quad \text{for } (a, b) = (1, 1), (0, 1) \text{ or } (1, 0), \quad (11)$$

where

$$Q_{11} = \exp [\gamma_0 + 0.7 + 0.4X^{(1)} + 0.2X^{(2)} - 0.2X^{(3)} - 0.4 \exp(X^{(4)}) - 0.4 \exp(X^{(5)}) + 0.2\{X^{(1)}X^{(3)} + X^{(2)} \exp(X^{(4)})\}],$$

$$Q_{01} = \exp [\gamma_0 + 0.6 + 0.2X^{(1)} + 0.6X^{(2)} - 0.4X^{(3)} - 0.6 \exp(X^{(4)}) - 0.2 \exp(X^{(5)}) + 0.2\{X^{(1)}X^{(3)} + X^{(2)} \exp(X^{(4)})\}],$$

$$Q_{10} = \exp [\gamma_0 + 0.5 + 0.6X^{(1)} + 0.4X^{(2)} - 0.2X^{(3)} - 0.2 \exp(X^{(4)}) - 0.2 \exp(X^{(5)}) + 0.4\{X^{(1)}X^{(3)} + X^{(2)} \exp(X^{(4)})\}],$$

and the parameter γ_0 was selected to yield desired prevalence of treatment level (0, 0) of 10%, 20%, 30%, 40% or 50%.

By definition,

$$P(A = a, B = b | \mathbf{X}) = \frac{1}{1 + Q_{11} + Q_{01} + Q_{10}} \quad \text{for } (a, b) = (0, 0).$$

Next, we generated the binary outcome Y from the following outcome model:

$$\begin{aligned} \text{logit } P(Y = 1|A, B, \mathbf{X}) &= 0.5 - 0.1A - 0.2B - \xi AB \\ &+ 0.4 \{X^{(1)} + X^{(2)} - X^{(3)} + \exp(X^{(4)}) - \exp(X^{(5)}) + X^{(1)}X^{(3)} + X^{(2)}\exp(X^{(4)})\} \{0.5 + \xi(0.2A + 0.1B + AB)\}, \end{aligned}$$

where $\xi = 0.5, 1$ or 2 , corresponding to a resulting causal DDI of $-0.107, -0.170$ or -0.231 .

With above set-up, we assume covariates $X^{(1)}$ to $X^{(5)}$ (and their functions) are sufficient for confounding control.

4.2 | Propensity Score Models Used to Analyze Simulated Data

We considered a set of four propensity score models, denoted as $\mathcal{E} = \{e_{ab}^j(\boldsymbol{\gamma}^j; \mathbf{X}) : j = 1, \dots, 4\}$, to analyze the simulated data:

$$\text{Multinomial logistic } P(A = a, B = b|\mathbf{X}) \sim X^{(1)} + X^{(2)} \text{ with parameters } \boldsymbol{\gamma}^1, \quad (12)$$

$$\text{Multinomial logistic } P(A = a, B = b|\mathbf{X}) \sim X^{(1)} + X^{(2)} + X^{(3)} + X^{(4)} + X^{(5)} \text{ with parameters } \boldsymbol{\gamma}^2, \quad (13)$$

$$\text{Multinomial logistic } P(A = a, B = b|\mathbf{X}) \sim X^{(1)} + X^{(3)} + X^{(4)} \text{ with parameters } \boldsymbol{\gamma}^3, \quad (14)$$

and

$$\begin{aligned} \text{Multinomial logistic } P(A = a, B = b|\mathbf{X}) &\sim X^{(1)} + X^{(2)} + X^{(3)} + \exp(X^{(4)}) + \exp(X^{(5)}) \\ &+ \{X^{(1)}X^{(3)} + X^{(2)}\exp(X^{(4)})\} \text{ with parameters } \boldsymbol{\gamma}^4, \end{aligned} \quad (15)$$

where $\boldsymbol{\gamma}^j$ was the vector of the parameters in the j th propensity score model, for $j = 1, \dots, 4$.

Taking model (12) as an example, with treatment $(0, 0)$ considered the reference level, this model assumes

$$P(A = a, B = b|\mathbf{X}) = \frac{\exp\{\boldsymbol{\gamma}_{ab}^{1\top}(X^{(1)}, X^{(2)})^\top\}}{1 + \exp\{\boldsymbol{\gamma}_{11}^{1\top}(X^{(1)}, X^{(2)})^\top\} + \exp\{\boldsymbol{\gamma}_{01}^{1\top}(X^{(1)}, X^{(2)})^\top\} + \exp\{\boldsymbol{\gamma}_{10}^{1\top}(X^{(1)}, X^{(2)})^\top\}}$$

for $(a, b) = (1, 1), (0, 1)$ or $(1, 0)$ where $\boldsymbol{\gamma}^1 = (\boldsymbol{\gamma}_{11}^{1\top}, \boldsymbol{\gamma}_{01}^{1\top}, \boldsymbol{\gamma}_{10}^{1\top})^\top$.

Among these four postulated propensity score models, only model (15) is correct, given the true model (11). The other models (12)-(14) misspecified the treatment assignment process by excluding some covariates and interaction terms, or by using incorrect functional form(s).

4.3 | Evaluation Criteria

We compared six estimators, where the first four were the standard IPTW estimators using the individual propensity score models (12)-(15), respectively. The final two estimators were the proposed multiply robust estimators $\hat{\theta}_{\text{EL}}$ and $\hat{\theta}_{\text{mELCB}}$. Both methods used all the four models (12)-(15) simultaneously. The difference between them was that the final, sixth estimator further incorporated balance constraints for covariates $X^{(2)}$ and $X^{(3)}$.

Our comparison focused on the conditional outcome model parameter $\xi = 0.5, 1$ or 2 . These three cases corresponded to a true causal DDI of $-0.107, -0.170$ or -0.231 . We considered a sample size of 2000 and ran 1000 simulations for each parameter configuration. In variance estimation for each estimator, we created 200 bootstrap samples.

We considered three criteria to evaluate the finite sample performance of each estimator. First, we examined the average empirical relative bias across 1000 simulation runs, where the relative bias for an estimator in one run was defined to be the difference of the estimated and true causal DDIs divided by the true causal DDI. Second, we examined the empirical coverage (in percent), defined to be the percentage of 95% confidence intervals in 1000 simulation runs that covered the true causal DDI. Third, we examined the empirical standard error across 1000 simulation runs. The first two criteria help assess the statistical consistency and the performance of variance and 95% confidence intervals estimation based on bootstrapping. The third criterion is useful to compare the statistical efficiency (or variability) of different estimators.

4.4 | Results

4.4.1 | Consistency and Robustness

Figure 1 reports the empirical relative bias for each of the six estimators, under various combinations of causal DDI and treatment prevalence. As expected from their consistency, the IPTW estimator under a correctly specified propensity score model (15) and two proposed multiply robust estimators using models (12)-(15) produced rather small empirical bias. In comparison, due to the use of incorrect models (12)-(14), the first three IPTW estimators led to biased results. Among the three estimators, the one under the main effects model (13) produced the least bias; its bias was slightly larger than that of the proposed methods.

Figure 2 reports the coverage probability for each of the six estimators. Due to misspecifying the propensity score model, the first three IPTW estimators yielded undercovered 95% confidence intervals. The IPTW estimator under a correctly specified model (15) and two proposed multiply robust estimators using models (12)-(15) all gave coverage close to the nominal 95% . These results also demonstrated that bootstrapping with 200 replicates performed reasonably well.

To more carefully examine different estimators, Figure 3 is a zoom-in version of Figure 2. Here, we drew three horizontal lines (at 93.65% , 95% , and 96.35%) to indicate a plausible range of coverage; the approximation formula $0.95 \pm 1.96 \cdot \sqrt{0.95 \times 0.05 / 1000}$ treated coverage status in each of the 1000 simulation runs as a Bernoulli random variable with success rate 0.95 . The empirical coverage rates from both empirical likelihood-based estimators fluctuated around 95% and lay within the range of 93.65% to 96.35% in most cases. However, we observed slight undercoverage of the IPTW estimator under a correct model (when the prevalence of treatment level $(0, 0) > 10\%$, $\xi = 1$ or 2 corresponding to a DDI of -0.170 or -0.231). The undercoverage of the IPTW estimator under the main effects model (13) is clearly shown. These results showed better finite sample performance of the proposed estimators than the standard IPTW estimator.

From robustness perspective, evidently, the proposed estimators achieved satisfactory finite sample performance, because they both returned valid results even if involving three misspecified propensity score models.

[insert Figures 1, 2 and 3 here]

4.4.2 | Efficiency

We further compared efficiency performance of two proposed, multiply robust estimators with the IPTW estimator under a correct propensity score model (15), quantified by the empirical standard error. IPTW estimators under incorrect models were excluded for efficiency comparison, because for biased estimators, less variability would only lead to worse coverage.

Figure 4 displays the results. In all combinations of causal DDI and treatment prevalence, on average the first proposed estimator $\hat{\theta}_{EL}$ produced the smallest standard error, indicating the highest efficiency among three estimators. The other proposed estimator $\hat{\theta}_{mELCB}$, from the modified empirical likelihood approach with covariate balance, had efficiency similar to $\hat{\theta}_{EL}$ and remarkably higher than the IPTW estimator. These results demonstrated improved efficiency of the proposed methods relative to the IPTW estimator.

[insert Figure 4 here]

5 | SIMULATION STUDIES: WHEN ALL POSTULATED PROPENSITY SCORE MODELS ARE WRONG

The consistency of both proposed estimators $\hat{\theta}_{EL}$ and $\hat{\theta}_{mELCB}$ requires a critical condition: at least one candidate model is correct. In this section, we conducted simulations to examine their finite sample performance in the worst scenario when all models were wrong.

5.1 | Setting 1: true model is multinomial logistic

We conducted simulations the same as those presented in Section 4 except that the following model set was used to analyze simulated data:

$$\text{Multinomial logistic } P(A = a, B = b | \mathbf{X}) \sim X^{(1)} \text{ with parameters } \gamma^1, \tag{16}$$

$$\text{Multinomial logistic } P(A = a, B = b | \mathbf{X}) \sim X^{(4)} + X^{(5)} \text{ with parameters } \gamma^2, \tag{17}$$

$$\text{Multinomial logistic } P(A = a, B = b | \mathbf{X}) \sim X^{(1)} + X^{(4)} \text{ with parameters } \gamma^3, \tag{18}$$

and

$$\text{Multinomial logistic } P(A = a, B = b | \mathbf{X}) \sim X^{(1)} + \exp(X^{(4)}) + \exp(X^{(5)}) \text{ with parameters } \gamma^4, \tag{19}$$

where γ^j was the vector of the parameters in the j th propensity score model, for $j = 1, \dots, 4$.

Given the true propensity score model (11), all these four postulated models are wrong due to excluding some covariates and interaction terms, or by using incorrect functional form(s).

We compared six estimators. The first four were IPTW estimators using the individual propensity score models (16)-(19), respectively. The final two estimators were the proposed multiply robust estimators $\hat{\theta}_{\text{EL}}$ and $\hat{\theta}_{\text{mELCB}}$. Both methods used all four incorrect models (16)-(19) simultaneously. Compared with the fifth estimator $\hat{\theta}_{\text{EL}}$, the final, sixth estimator $\hat{\theta}_{\text{mELCB}}$ further imposed balance constraints for covariates $X^{(2)}$ and $X^{(3)}$. Since models (16)-(19) all excluded covariates $X^{(2)}$ and $X^{(3)}$, they allowed for more direct evaluation of the estimator $\hat{\theta}_{\text{mELCB}}$ that aimed to balance the distributions of covariates $X^{(2)}$ and $X^{(3)}$.

For each of the six estimators, Figures 5 and 6 summarize the empirical relative bias and coverage probability, respectively, under various combinations of causal DDI and treatment prevalence. Four IPTW estimators using individual, wrong models (16)-(19) all led to severely biased results and undercoverage due to misspecifying the treatment decision process. The proposed estimator $\hat{\theta}_{\text{EL}}$ had slightly better performance compared to the least-biased IPTW estimator (among all IPTW estimators). Performance of the proposed estimator $\hat{\theta}_{\text{mELCB}}$ was promising. It produced very small empirical bias and satisfactory empirical coverage close to the nominal 95%. The better performance of $\hat{\theta}_{\text{mELCB}}$ compared to $\hat{\theta}_{\text{EL}}$ was probably due to the use of additional balance conditions for covariates $X^{(2)}$ and $X^{(3)}$, given that information on $X^{(2)}$ and $X^{(3)}$ was not used by any of the models (16)-(19). We note that such simulation design was intended to examine the nonparametric balance constraints for $\hat{\theta}_{\text{mELCB}}$. The results do not necessarily suggest that $\hat{\theta}_{\text{mELCB}}$ generally outperforms $\hat{\theta}_{\text{EL}}$. The reason is, if information on $X^{(2)}$ and $X^{(3)}$ was leveraged by $\hat{\theta}_{\text{mELCB}}$, such information could also be leveraged by $\hat{\theta}_{\text{EL}}$ too, by including $X^{(2)}$ and $X^{(3)}$ in propensity score model(s).

To directly examine the performance of balance conditions for $\hat{\theta}_{\text{mELCB}}$, Figure 7 displays boxplot of overall balance (i.e., the maximum absolute standardized difference across four drug pairs) of $X^{(2)}$ and $X^{(3)}$ across 1000 simulation runs, before and after weighting data using the proposed multiply robust estimator with balance constraints for $X^{(2)}$ and $X^{(3)}$. The results showed negligible imbalance in the majority of runs under various treatment prevalence. Compared to balance results before weighting, results after weighting were significantly improved. Given that all postulated models did not involve $X^{(2)}$ and $X^{(3)}$, it is reasonable to attribute good covariate balancing to the balance constraints for $X^{(2)}$ and $X^{(3)}$.

[insert Figures 5, 6 and 7 here]

5.2 | Setting 2: true model is not multinomial logistic

We conducted simulations the same as those presented in Section 4 except that a non-multinomial logistic model served as the true propensity score model.

We first generated two continuous random variables $Z_1 = Q_{10} + Z_0$ and $Z_2 = Q_{01} - Z_0$, where Q_{10} and Q_{01} were defined as in Section 4 with $\gamma_0 = 0$, and Z_0 followed the standard normal distribution. Then, we simulated treatment

indicators as below:

$$(A, B) = \begin{cases} (1, 1), & \text{if } Z_1 \geq c, Z_2 \geq c \\ (1, 0), & \text{if } Z_1 \geq c, Z_2 < c \\ (0, 1), & \text{if } Z_1 < c, Z_2 \geq c \\ (0, 0), & \text{if } Z_1 < c, Z_2 < c \end{cases} \quad (20)$$

where constant c was chosen to yield desired prevalence of treatment level (0, 0) of 10%, 20%, 30%, 40% or 50%.

Following Section 4, we postulated multinomial logistic models (12)-(15) to analyze simulated data. Since the true model (20) is not multinomial logistic, all postulated models are incorrect.

Figure 8 reports the results. All models produced severely biased results due to misspecification. Of note, IPTW estimators under fuller models (13) and (15) had even worse performance compared with models (12) and (14), demonstrating that adding more covariates into an existing propensity score model can paradoxically increase bias. The two proposed estimators outperformed IPTW estimators under models (13) and (15) but not IPTW estimators under models (12) and (14).

[insert Figure 8 here]

6 | APPLICATION TO KIDNEY DATA

We applied the proposed methods from Sections 3.2 and 3.3, and the standard IPTW method from Section 3.1 in order to analyze data from a pharmacoepidemiologic study on possible impact of renin-angiotensin system inhibitors (RAS-I) on the comparative nephrotoxicity of nonsteroidal anti-inflammatory drugs (NSAIDs) and opioids.⁴⁴

The data set included 27,741 patients who were age ≥ 18 years and admitted to one of four hospitals within the University of Pennsylvania Health System from January 1, 2004 to June 30, 2017. NSAIDs and RAS-I were considered the possible object and precipitant, respectively. Lacking effects on kidney function, oxycodone and amlodipine were considered comparator drugs. Specifically, the first treatment indicator A was set to 1 for NSAIDs and 0 for oxycodone. The second treatment indicator B was set to 1 for RAS-I and 0 for amlodipine. Eligible patients had to maintain at least 24 hours of concomitant treatment with a drug pair of interest. Among these patients, 4,250 (15.3%) were treated with the NSAIDs+RAS-I drug pair, 1,181 (4.3%) the NSAIDs+amlodipine drug pair, 17,610 (63.5%) the oxycodone+RAS-I drug pair, and 4,700 (16.9%) the oxycodone+amlodipine drug pair. The outcome was a binary indicator for acute kidney injury (AKI) during the first 14 days of follow-up, defined using Kidney Disease Improving Global Outcomes (KDIGO) creatinine and dialysis criteria. A total of 2,486 patients (9.0%) were observed to experience the AKI incident. Our goal is to estimate the causal DDI between NSAIDs and RAS-I, defined in (1) on the additive scale, i.e., a difference of risk differences.

We built a set of multinomial logistic propensity score models guided by clinical knowledge and prior literature. We began with the first model (PS-1) that included baseline covariates that have clearly been identified as risk factors for the outcome of AKI in previous studies. They fell into six categories (a) demographics, including age and

body mass index (BMI); (b) hospital admission characteristics, including admission type, treatment in an ICU at the time of cohort entry, and postoperative status; (c) comorbidities, including chronic kidney disease, heart failure, myocardial infarction, hypertension, other cardiac arrhythmia, liver disease, and diabetes mellitus; (d) kidney function, including baseline glomerular filtration rate, and history of prior AKI; (e) labs, including baseline hemoglobin concentration, and baseline chloride concentration; (f) medications, including loop diuretics, hydrochlorothiazide, vancomycin, trimethoprim/sulfamethoxazole, antibiotic nephrotoxins, and other miscellaneous nephrotoxins.

The second model (PS-2) included variables that have clearly been identified as risk factors for the outcome of AKI, with additional variables that may be associated with treatment decisions, but are less well established as risk factors. Specifically, we added variables to PS-1, which fell into categories (a) demographics, including sex and race; (c) comorbidities, including atrial fibrillation, valvular disease, pulmonary circulation disease, chronic pulmonary disease, cancer, and obstructive sleep apnea.

The third model (PS-3) included variables from PS-2 plus variables that may be associated with treatment decisions and also may function as overall markers of illness severity. Specifically, we added variables to PS-2, which fell into categories (b) hospital admission characteristics, including hospital where the patient was treated, and duration of hospitalization prior to cohort entry, in days; (c) comorbidities, including unexplained weight loss, fluid or electrolyte disorder, and human immunodeficiency virus infection; (e) labs, including baseline white blood cell count, baseline platelet count, and baseline potassium concentration; (f) medications, including beta-blockers, alpha-beta blockers, hydralazine, other miscellaneous antihypertensive medications, broad-spectrum gram negative antibiotics, and narrow spectrum gram negative antibiotics.

The fourth model (PS-4) included variables from PS-3 plus interaction terms between admission type and the following variables: age, chronic kidney disease, heart failure, baseline hemoglobin concentration, and baseline platelet count. To further capture nonlinear terms, the fifth, final model (PS-5) included variables from PS-4 plus quadratic terms for the following variables: body mass index, baseline glomerular filtration rate, baseline hemoglobin concentration, and baseline chloride concentration.

We compared seven estimators of the causal DDI, quantified by comparing the difference in AKI risk between NSAID versus oxycodone in patients treated with RAS-I to the difference in AKI risk between NSAID versus oxycodone in patients treated with amlodipine. The first, second, third, fourth and fifth estimators were the standard IPTW estimators using individual models PS-1, PS-2, PS-3, PS-4 and PS-5, respectively. The sixth and seventh estimators were obtained by applying the proposed multiply robust methods described in Sections 3.2 and 3.3, respectively. Both estimators used all five propensity score models simultaneously, motivated by an understanding that the true propensity score model was unknown; in this reality, the fifth, fullest model PS-5 is not necessarily the best-performing one among all five models. Compared to the sixth estimator, the seventh estimator imposed additional balance constraints for age and chronic kidney disease; these two covariates were selected for illustration purpose given that they were both known risk factors and were the only two covariates having overall absolute standardized difference $>15\%$ before and after weighting the data sample using IPTW under the fullest model PS-5. For each of these seven estimators, we bootstrapped the data set 200 times to estimate the variance and 95% confidence interval.

1
2
3 Table 1 summarizes the analysis results. The five IPTW estimators produced larger (further from the null) causal
4 DDI estimates than two proposed methods. PS-3 and PS-4 produced IPTW-based DDI estimates greater than twice the
5 size of estimates from the proposed methods. The estimator based on PS-1 produced slightly smaller estimates than
6 that based on PS-5, but the difference was not large. This implied that once the key risk factors (that have clearly been
7 identified as risk factors for the outcome of AKI in previous studies) have been adjusted for, further including possible
8 risk factors, other surrogate markers of overall severity of illness, interaction terms and non-linear terms, did not make
9 a remarkable difference. The estimates based on PS-3 and PS-4 were similar, and were larger than results from PS-1,
10 PS-2 and PS-5. Although DDI estimates differed from method to method, the differences between methods were small
11 on the additive scale. All methods produced 95% confidence intervals for the causal DDI that included 0, suggesting no
12 evidence of a statistically significant synergistic interaction at the 5% level. The point estimates were close to the null
13 value zero (e.g., 0.200% and 0.146% from two proposed methods), implying a small excess risk attributed to RAS-I
14 when assessing the NSAID-AKI risk. These results were consistent with prior studies.⁴⁴ The estimate based on PS-1
15 (the simplest model) had the least standard error, and the estimate based on PS-5 (the fullest model) had the largest
16 standard error. Two proposed methods produced estimates that had less standard errors than all IPTW estimates except
17 for the estimate based on PS-1. The last estimate, based on modified empirical likelihood procedures, had standard
18 error slightly higher than but comparable to the estimate based on PS-1.

19
20
21
22
23
24
25
26
27
28
29
30
31
32
33
34
35
36
37
38
39
40
41
42
43
44
45
46
47
48
49
50
51
52
53
54
55
56
57
58
59
60
[insert Table 1 here]

To assess covariate balance, Figure 9 visualizes the overall absolute standardized differences across drug pairs for 52 baseline covariates (including dummy variables for categorical data), before and after weighting the sample using the following methods: i) IPTW under the simplest model PS-1, ii) IPTW under the fullest model PS-5, iii) the proposed empirical likelihood method using models PS-1 to PS-5, and iv) the proposed modified empirical likelihood method with additional balance constraints on age and chronic kidney disease. We drew a horizontal line to represent a cutoff value of 0.2, beyond which a balance result might be problematic.¹⁵ Without any confounding adjustment (i.e., before weighting), several baseline covariates had remarkably imbalanced distributions. In particular, 8 covariates had overall standardized mean differences > 0.2 for the unweighted sample. On contrary, two proposed empirical likelihood weighting methods were found to well balance all measured covariates in the weighted sample; no covariate had an overall standardized mean difference > 0.2 . If we considered a more conservative cutoff value of 0.1, then 29 covariates had overall standardized mean differences > 0.1 for the unweighted sample. In comparison, 2 covariates for the empirical likelihood weighting method (without additional covariate balance constraints), and no covariate for the modified empirical likelihood weighting method (with additional balance constraints), had an overall standardized mean difference > 0.1 .

In terms of covariate balancing, the proposed methods appeared to outperform the IPTW estimators based on PS-1 and PS-5, which led to 13 and 6 covariates having an overall standardized mean difference > 0.1 for the weighted sample. Comparing two IPTW estimators, the more complex model PS-5 performed better than the simpler model PS-1.

We further examined covariate balance performance of the proposed modified empirical likelihood method that directly balanced the distributions of age and chronic kidney disease for each drug pair. Table 2 reports absolute standardized differences of age and chronic kidney disease in each of the four drug pairs. As expected, the modified empirical likelihood method produced negligible standardized mean differences for both covariates.

[insert Table 2 and Figure 9 here]

7 | DISCUSSION

In this paper, we have proposed two multiply robust methods for estimating the causal DDIs by making use of a set of propensity score models instead of just one. The second method further reduces model dependence by adding constraints to directly balance the distributions of user-specified covariates. Both methods guarantee statistical consistency, as long as one of the candidate models is correctly specified (and in this case, there is no need to identify which model is correct). Compared to the standard IPTW method that relies on a single propensity score model, the proposed methods provide increased protection against model misspecification. Although we place the development in two-drug DDI context, the methodology can be directly applied to general multi-valued treatment case, and to other applications such as interactions between genetic and environmental exposures.³

Our simulations demonstrated severe bias and undercoverage due to misspecifying a propensity score model when using the IPTW method. Simulation results also confirmed satisfactory finite sample performance of the proposed methods in terms of robustness. Moreover, our methods produced a smaller standard error compared to the IPTW method under a correct model, suggesting an efficiency gain without losing consistency. This is consistent with numerical findings in a prior study.³³ Similarly, in weight calibration context, Han⁴⁵ illustrated that including incorrect models can enhance efficiency when a correct propensity score model is specified, by examining the projection residual. In simulations settings where all postulated models were severely misspecified, both IPTW and the proposed methods can lead to biased results, suggesting the need to include good candidate model(s) when implementing the proposed methods.

In theory, the proposed methods allow for any finite number of candidate models, and more models would naturally offer a better chance of including a correct one. However, numerically, having too many models/constraints may result in challenges such as collinearity.^{29,30,39} It is advisable to only include reasonable models that are not too similar with each other. In our limited experiences, postulating $J = 5$ models or so does not lead to numerical challenges. Such number of models might be sufficient in many applications. The hope is that after careful considerations with subject matter knowledge, a short list of models will be generated to form the model set. For example, our kidney data analysis involves five models, where Model 1 includes key risk factors only, Model 2 = Model 1 + possible risk factors, Model 3 = Model 2 + other surrogate markers of the outcome, Model 4 = Model 3 + interaction terms, and Model 5 = Model 4 + non-linear terms. This 5-model strategy may or may not be the most meaningful in other studies. We need more discussion on actionable model specification strategies to facilitate the implementation of multiply robust estimation.

1
2
3 As for what covariates to impose balance constraints when implementing the modified empirical likelihood method,
4 there are at least two strategies. The first is to specify *a priori*, important covariates using subject matter knowledge prior
5 to the collection and analysis of data. The second is to select covariates that are severely imbalanced in the unweighted
6 data or are suboptimally balanced in another weighted analysis (e.g., the original empirical likelihood method without
7 additional balance constraints). The second strategy may serve as a means to handle residual imbalance. Evaluating
8 different strategies is beyond the scope of the current work. More generally, the proposed methods might be employed in
9 combination with matching for improved covariate balance. When matching alone does not well balance all covariates,
10 one could apply empirical likelihood weighting presented here to the matched sample.

11
12
13
14
15 The distance between two proposed estimators (when postulating the same model set) might be used to detect pos-
16 sible model misspecification. The reason is that if the model set contains a correctly specified propensity score model,
17 the resulting estimators from both methods are consistent, and their difference should converge to zero as sample size
18 grows. Therefore, a significant discrepancy between these two estimates may indicate that none of the candidate mod-
19 els is correct. Formal tests using this idea were developed in various contexts.^{46,47} It is useful to study specification
20 tests in our multiple-model context, although non-significant results cannot confirm the inclusion of correct model(s).

21
22
23
24 The current development does not use any outcome model, making it easy to examine different outcome vari-
25 ables; thus there is no need to re-calculate the empirical likelihood weights for DDIs with respect to a new outcome.
26 Future work will further include multiple conditional outcome models and evaluate its statistical performance for the
27 estimation of causal DDIs.
28
29

30 31 32 **ACKNOWLEDGMENTS**

33
34
35 The authors thank the reviewers for their constructive comments which led to an improved version of this paper. This
36 work was funded by NIH grants K08DK124658, R01DA048001, R01AG064589, and R01AG025152.
37

38 39 40 **DATA AVAILABILITY STATEMENT**

41
42 The real-world kidney data derived from electronic medical records from the University of Pennsylvania Health System
43 are currently not available for public sharing.
44

45 46 47 **References**

- 48
49
50 1. Rosenbaum PR, Rubin DB. The central role of the propensity score in observational studies for causal effects.
51 *Biometrika*. 1983;70(1):41–55.
52
- 53
54 2. Hernán MA, Robins JM. *Causal Inference: What If*. Boca Raton: Chapman & Hall/CRC; 2021.
55
- 56
57 3. VanderWeele TJ, Knol MJ. A tutorial on interaction. *Epidemiol Method*. 2014;3(1):33–72.
58
59
60

4. VanderWeele TJ. On the distinction between interaction and effect modification. *Epidemiology*. 2009;20(6):863–871.
5. Hennessy S, Flockhart DA. The need for translational research on drug–drug interactions. *Clin Pharm Therap*. 2012;91(5):771–773.
6. Hennessy S, Leonard CE, Gagne JJ, et al. Pharmacoepidemiologic methods for studying the health effects of drug–drug interactions. *Clin Pharm Therap*. 2016;99(1):92–100.
7. Gurwitz JH, Field TS, Harrold LR, et al. Incidence and preventability of adverse drug events among older persons in the ambulatory setting. *JAMA*. 2003;289(9):1107–1116.
8. Horvitz DG, Thompson DJ. A generalization of sampling without replacement from a finite universe. *J Am Stat Assoc*. 1952;47(260):663–685.
9. Rosenbaum PR. Model-based direct adjustment. *J Am Stat Assoc*. 1987;82(398):387–394.
10. Lunceford JK, Davidian M. Stratification and weighting via the propensity score in estimation of causal treatment effects: a comparative study. *Stat Med*. 2004;23(19):2937–2960.
11. Seaman SR, White IR. Review of inverse probability weighting for dealing with missing data. *Stat Methods Med Res*. 2013;22(3):278–295.
12. Imbens GW. The role of the propensity score in estimating dose-response functions. *Biometrika*. 2000;87(3):706–710.
13. Imai K, van Dyk DA. Causal inference with general treatment regimes: Generalizing the propensity score. *J Am Stat Assoc*. 2004;99(467):854–866.
14. Spreeuwenberg MD, Bartak A, Croon MA, et al. The multiple propensity score as control for bias in the comparison of more than two treatment arms: an introduction from a case study in mental health. *Med Care*. 2010;48(2):166–174.
15. McCaffrey DF, Griffin BA, Almirall D, Slaughter ME, Ramchand R, Burgette LF. A tutorial on propensity score estimation for multiple treatments using generalized boosted models. *Stat Med*. 2013;32(19):3388–3414.
16. Imai K, Ratkovic M. Covariate balancing propensity score. *J R Stat Soc Series B Stat Methodol*. 2014;76(1):243–263.
17. Li F, Li F. Propensity score weighting for causal inference with multiple treatments. *Ann Appl Stat*. 2019;13(4):2389–2415.
18. Yoshida K, Solomon DH, Haneuse S, et al. Multinomial extension of propensity score trimming methods: a simulation study. *Am J Epidemiol*. 2019;188(3):609–616.

19. Qin J, Lawless J. Empirical likelihood and general estimating equations. *Ann Stat*. 1994;22(1):300–325.
20. Owen AB. *Empirical Likelihood*. New York: Chapman & Hall/CRC; 2001.
21. Chen J, Sitter RR, Wu C. Using empirical likelihood methods to obtain range restricted weights in regression estimators for surveys. *Biometrika*. 2002;89(1):230–237.
22. Han P, Wang L. Estimation with missing data: beyond double robustness. *Biometrika*. 2013;100(2):417–430.
23. Schisterman EF, Cole SR, Platt RW. Overadjustment bias and unnecessary adjustment in epidemiologic studies. *Epidemiology*. 2009;20(4):488–495.
24. Lu H, Cole SR, Platt RW, Schisterman EF. Revisiting overadjustment bias. *Epidemiology*. 2021;32(5):e22–e23.
25. Brookhart MA, Schneeweiss S, Rothman KJ, Glynn RJ, Avorn J, Stürmer T. Variable selection for propensity score models. *Am J Epidemiol*. 2006;163(12):1149–1156.
26. Mickey RM, Greenland S. The impact of confounder selection criteria on effect estimation. *Am J Epidemiol*. 1989;129(1):125–137.
27. Schneeweiss S, Rassen JA, Glynn RJ, Avorn J, Mogun H, Brookhart MA. High-dimensional propensity score adjustment in studies of treatment effects using health care claims data. *Epidemiology*. 2009;20(4):512–522.
28. VanderWeele TJ. Principles of confounder selection. *Eur J Epidemiol*. 2019;34:211–219.
29. Han P. A further study of the multiply robust estimator in missing data analysis. *J Stat Plan Inference*. 2014;148:101–110.
30. Han P. Multiply robust estimation in regression analysis with missing data. *J Am Stat Assoc*. 2014;109(507):1159–1173.
31. Chan KCG, Yam SCP, Zhang Z. Globally efficient non-parametric inference of average treatment effects by empirical balancing calibration weighting. *J R Stat Soc Series B Stat Methodol*. 2016;78(3):673–700.
32. Chen S, Haziza D. Multiply robust imputation procedures for the treatment of item nonresponse in surveys. *Biometrika*. 2017;104(2):439–453.
33. Shu D, Han P, Wang R, Toh S. Estimating the marginal hazard ratio by simultaneously using a set of propensity score models: a multiply robust approach. *Stat Med*. 2021;40(5):1224–1242.
34. Rubin DB. Estimating causal effects of treatment in randomized and nonrandomized studies. *J Educ Psychol*. 1974;66(5):688–701.
35. Holland PW. Statistics and causal inference. *J Am Stat Assoc*. 1986;81(396):945–960.

36. Hájek J. Comment on "An essay on the logical foundations of survey sampling, part one" by Basu D. *In The Foundations of Survey Sampling*, Godambe VP and Sprott DA, eds. Toronto : Holt, Reinhart & Winston; 1971;236.
37. Qin J. *Biased Sampling, Over-identified Parameter Problems and Beyond*. Singapore: Springer; 2017.
38. Qin J, Zhang B. Empirical-likelihood-based inference in missing response problems and its application in observational studies. *J R Stat Soc Series B Stat Methodol*. 2007;69(1):101–122.
39. Han P. Combining inverse probability weighting and multiple imputation to improve robustness of estimation. *Scand J Stat*. 2016;43(1):246–260.
40. Efron B, Tibshirani RJ. *An Introduction to the Bootstrap*. New York: Chapman & Hall/CRC; 1993.
41. Austin PC. Variance estimation when using inverse probability of treatment weighting (IPTW) with survival analysis. *Stat Med*. 2016;35(30):5642–5655.
42. Shu D, Young JG, Toh S, Wang R. Variance estimation in inverse probability weighted Cox models. *Biometrics*. 2021;77(3):1101–1117.
43. Austin PC, Stuart EA. Moving towards best practice when using inverse probability of treatment weighting (IPTW) using the propensity score to estimate causal treatment effects in observational studies. *Stat Med*. 2015;34(28):3661–3679.
44. Miano TA, Shashaty MGS, Yang W, Brown JR, Zuppa A, Hennessy S. Effect of renin-angiotensin system inhibitors on the comparative nephrotoxicity of NSAIDs and opioids during hospitalization. *Kidney360*. 2020;1(7):604–613.
45. Han P. A further study of propensity score calibration in missing data analysis. *Stat Sin*. 2018;28:1307–1332.
46. Hausman JA. Specification tests in econometrics. *Econometrica*. 1978;46(6):1251–1271.
47. Shu D, He W. Perturbation-based null hypothesis tests with an application to Clayton models. *Can J Stat*. 2021;49(4):1236–1251.

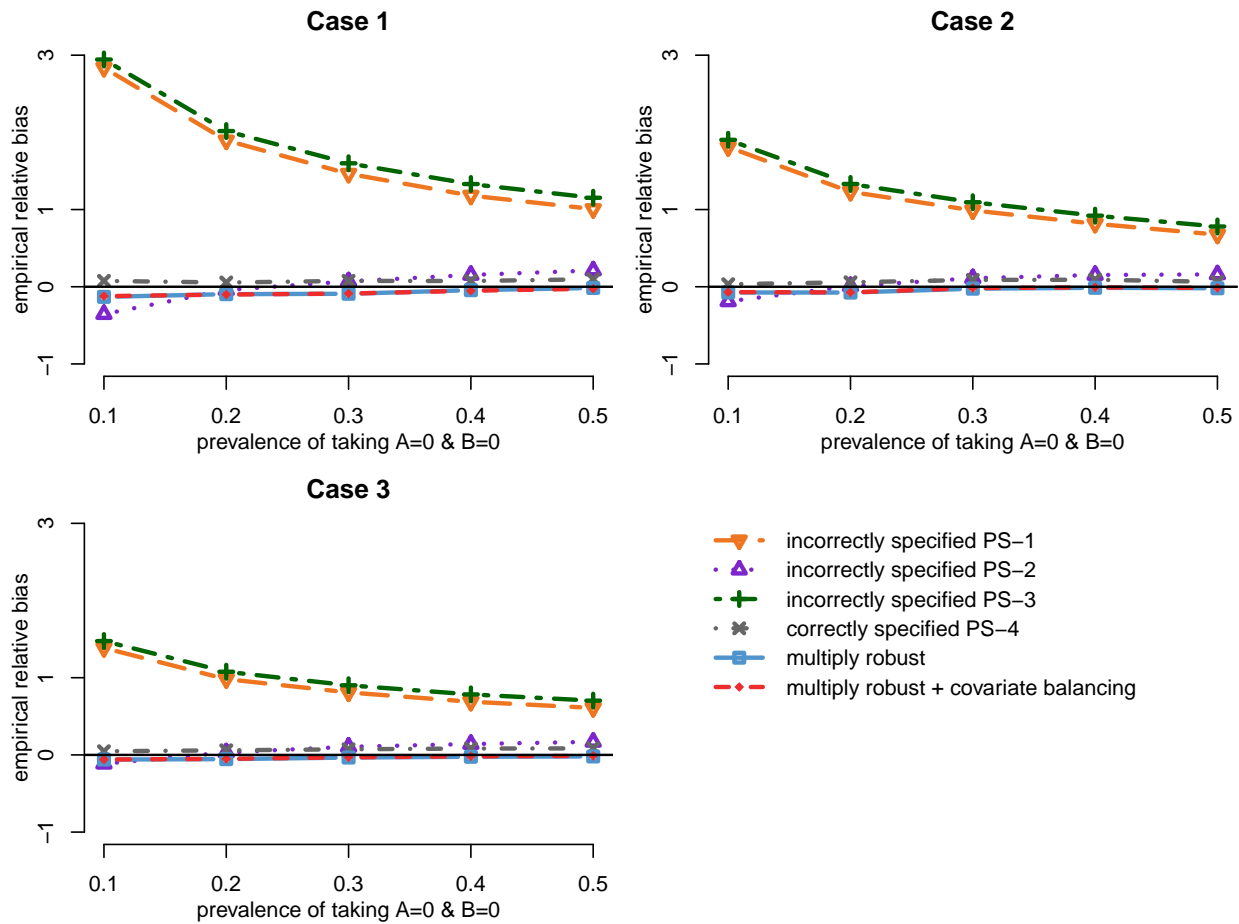


FIGURE 1 Empirical relative bias with $n = 2000$. Incorrectly specified PS-1 to PS-3: IPTW estimators of the causal DDI using three incorrectly specified propensity score models (12)-(14), respectively; correctly specified PS-4: IPTW estimator of the causal DDI using a correctly specified propensity score model (15); multiply robust and multiply robust + covariate balancing: the proposed multiply robust estimators using multiple models (12)-(15) simultaneously, without and with additional covariate balance constraints, respectively. Cases 1 to 3: the conditional outcome model parameter $\xi = 0.5, 1$ or 2 , yielding a true causal DDI of $-0.107, -0.170$ or -0.231



1
2
3
4
5
6
7
8
9
10
11
12
13
14
15
16
17
18
19
20
21
22
23
24
25
26
27
28
29
30
31
32
33
34
35
36
37
38
39
40
41
42
43
44
45
46
47
48
49
50
51
52
53
54
55
56
57
58
59
60

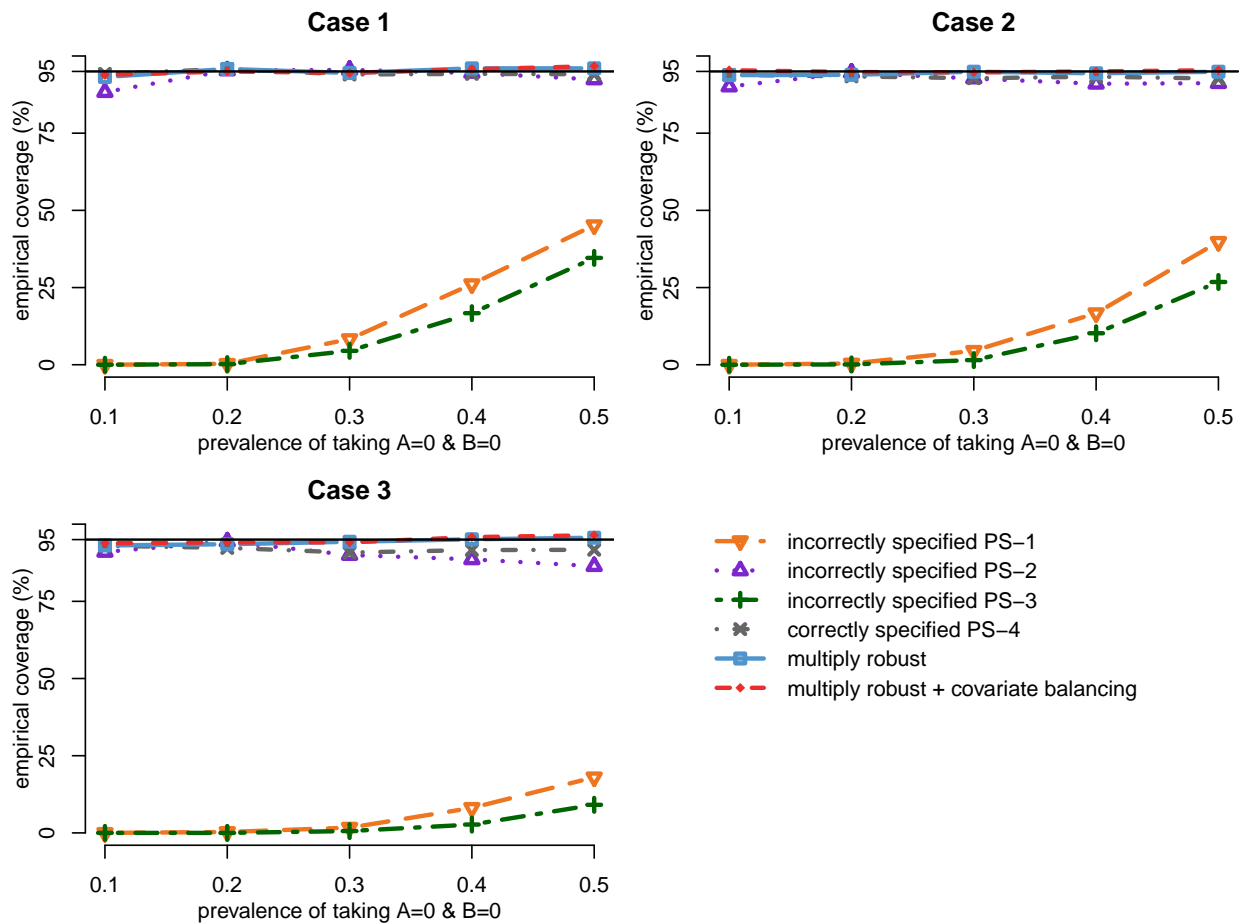


FIGURE 2 Empirical coverage in percent with $n = 2000$. Incorrectly specified PS-1 to PS-3: IPTW estimators of the causal DDI using three incorrectly specified propensity score models (12)-(14), respectively; correctly specified PS-4: IPTW estimator of the causal DDI using a correctly specified propensity score model (15); multiply robust and multiply robust + covariate balancing: the proposed multiply robust estimators using multiple models (12)-(15) simultaneously, without and with additional covariate balance constraints, respectively. Cases 1 to 3: the conditional outcome model parameter $\xi = 0.5, 1$ or 2 , yielding a true causal DDI of $-0.107, -0.170$ or -0.231

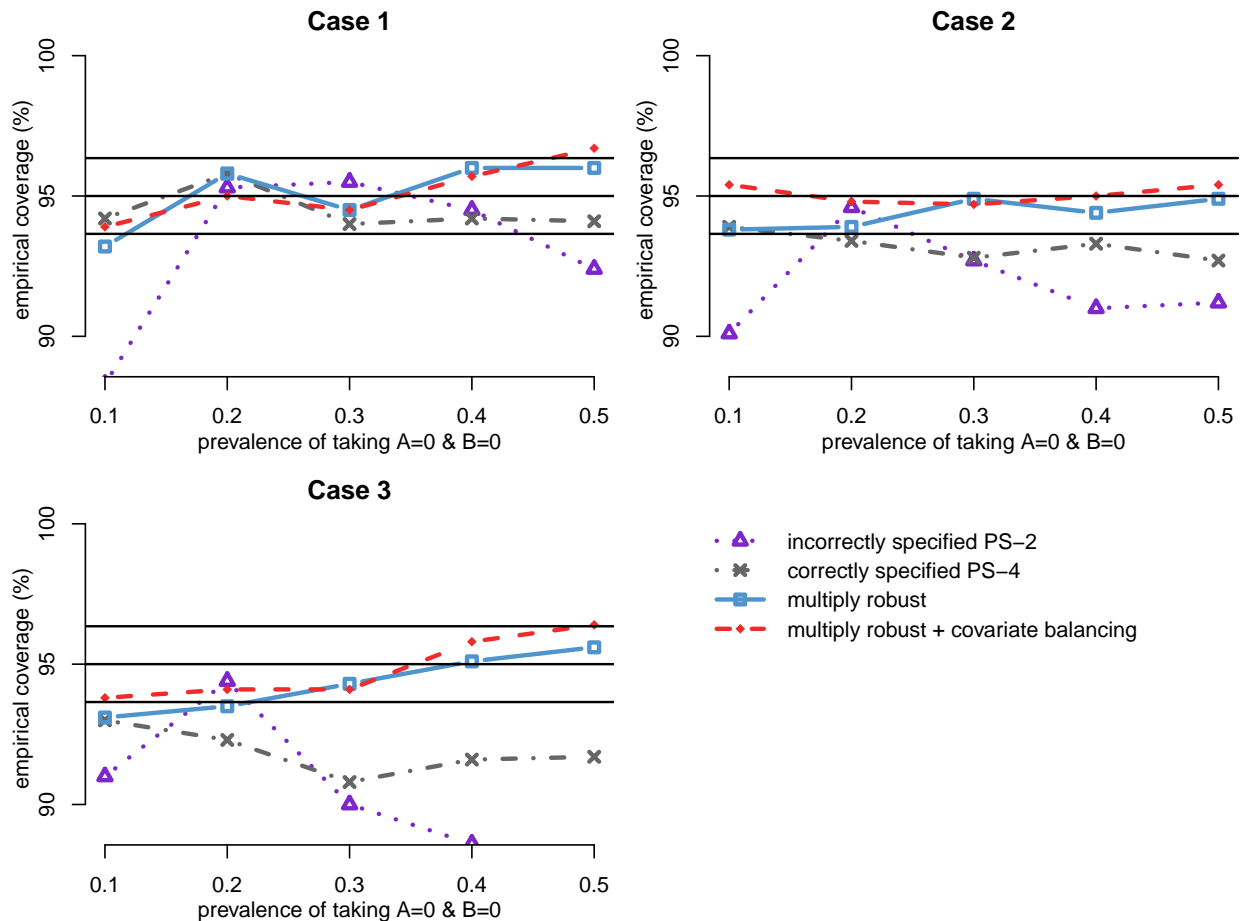


FIGURE 3 A zoom-in version of Figure 2: empirical coverage in percent with $n = 2000$. Three horizontal lines (at 93.65%, 95%, and 96.35%) indicate a plausible range of coverage. Incorrectly specified PS-2: IPTW estimator of the causal DDI using incorrectly specified propensity score model (13), i.e., the main effects model; Correctly specified PS-4: IPTW estimator of the causal DDI using a correctly specified propensity score model (15); multiply robust and multiply robust + covariate balancing: the proposed multiply robust estimators using multiple models (12)-(15) simultaneously, without and with additional covariate balance constraints, respectively. Cases 1 to 3: the conditional outcome model parameter $\xi = 0.5, 1$ or 2 , yielding a true causal DDI of $-0.107, -0.170$ or -0.231

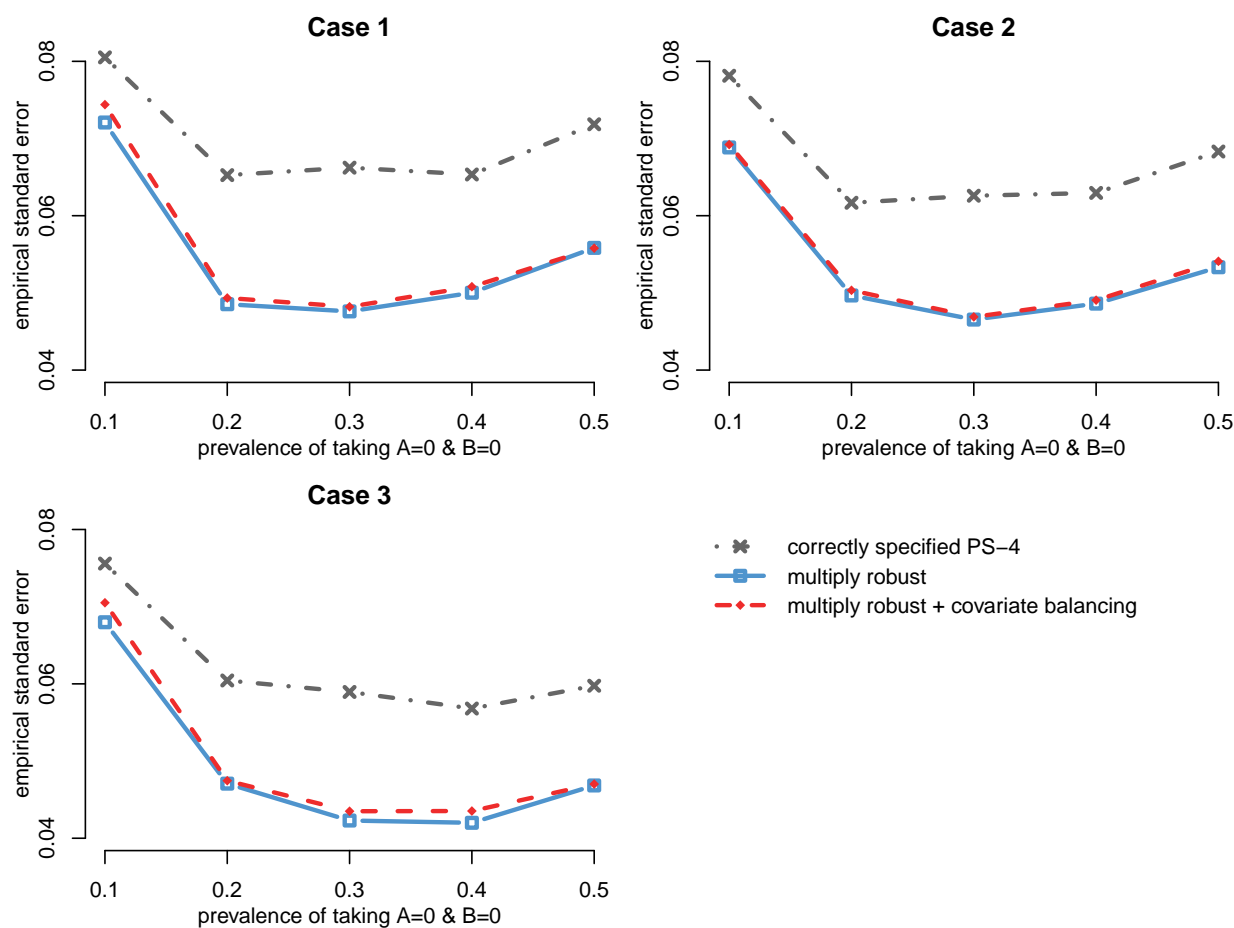


FIGURE 4 Empirical standard error with $n = 2000$. Correctly specified PS-4: IPTW estimator of the causal DDI using a correctly specified propensity score model (15); multiply robust and multiply robust + covariate balancing: the proposed multiply robust estimators using multiple models (12)-(15) simultaneously, without and with additional covariate balance constraints, respectively. Cases 1 to 3: the conditional outcome model parameter $\xi = 0.5, 1$ or 2 , yielding a true causal DDI of $-0.107, -0.170$ or -0.231

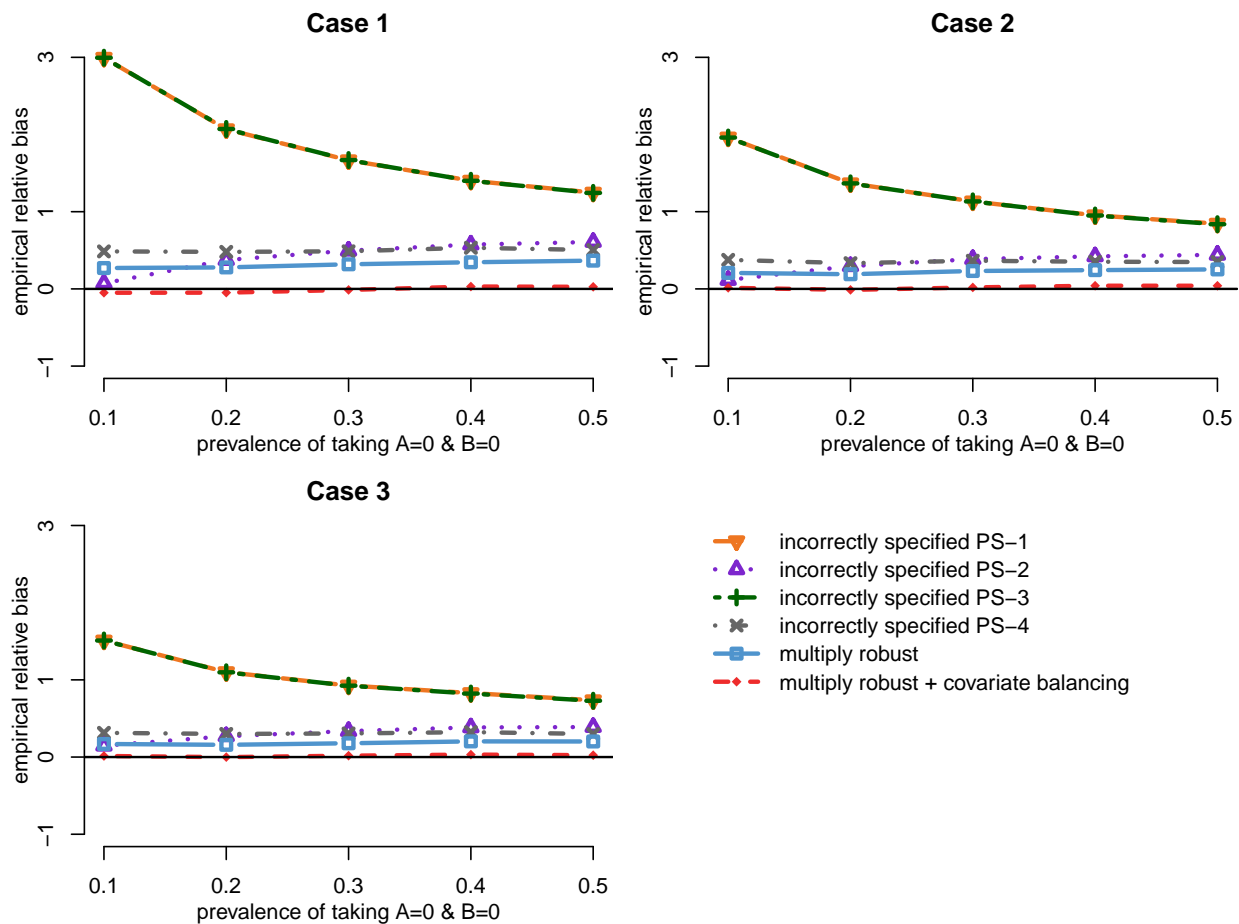


FIGURE 5 When all models are wrong: empirical relative bias with $n = 2000$. Incorrectly specified PS-1 to PS-4: IPTW estimators of the causal DDI using four incorrectly specified propensity score models (16)-(19), respectively; multiply robust and multiply robust + covariate balancing: the proposed multiply robust estimators using wrong models (16)-(19) simultaneously, without and with additional covariate balance constraints, respectively. Cases 1 to 3: the conditional outcome model parameter $\xi = 0.5, 1$ or 2 , yielding a true causal DDI of $-0.107, -0.170$ or -0.231

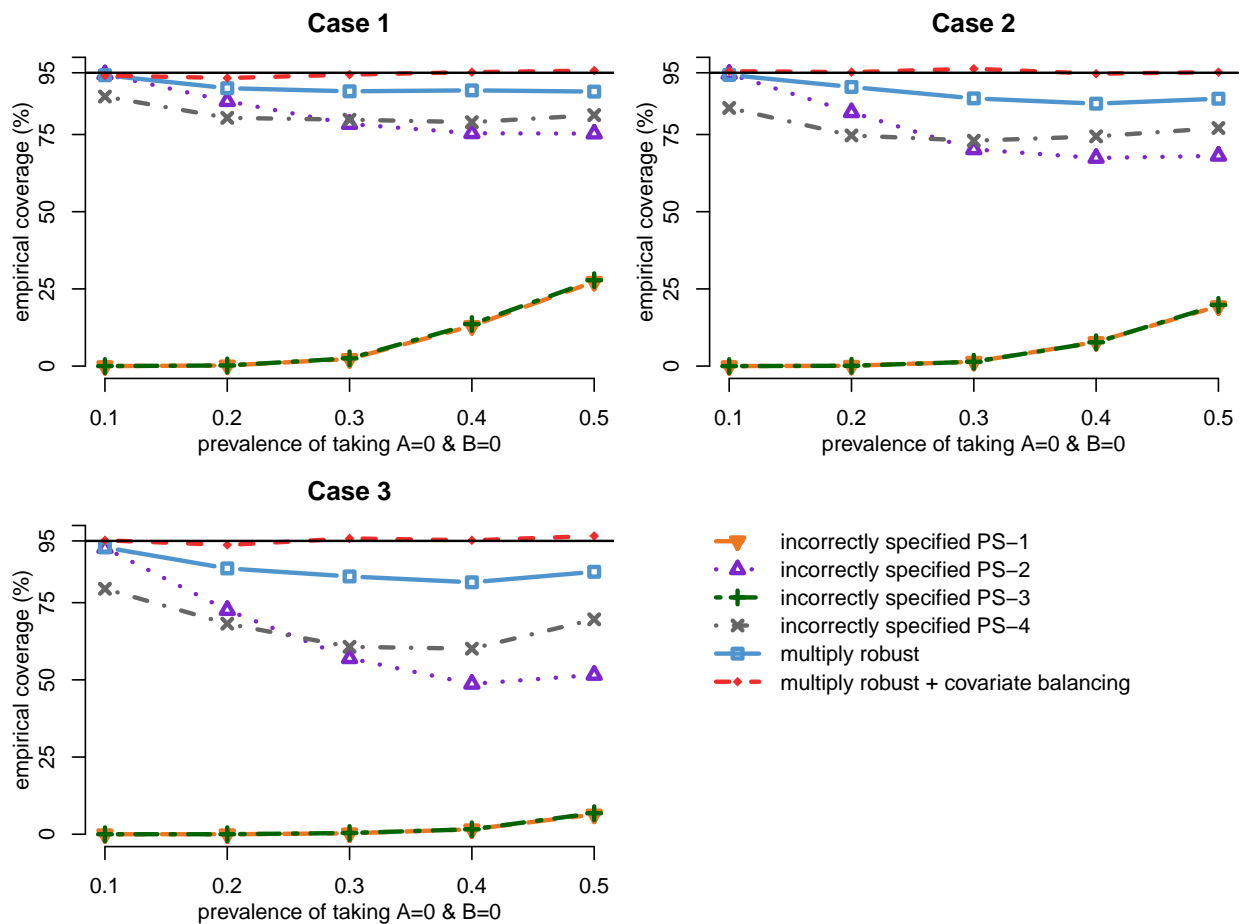


FIGURE 6 When all models are wrong: empirical coverage in percent with $n = 2000$. Incorrectly specified PS-1 to PS-4: IPTW estimators of the causal DDI using four incorrectly specified propensity score models (16)-(19), respectively; multiply robust and multiply robust + covariate balancing: the proposed multiply robust estimators using wrong models (16)-(19) simultaneously, without and with additional covariate balance constraints, respectively. Cases 1 to 3: the conditional outcome model parameter $\xi = 0.5, 1$ or 2 , yielding a true causal DDI of $-0.107, -0.170$ or -0.231

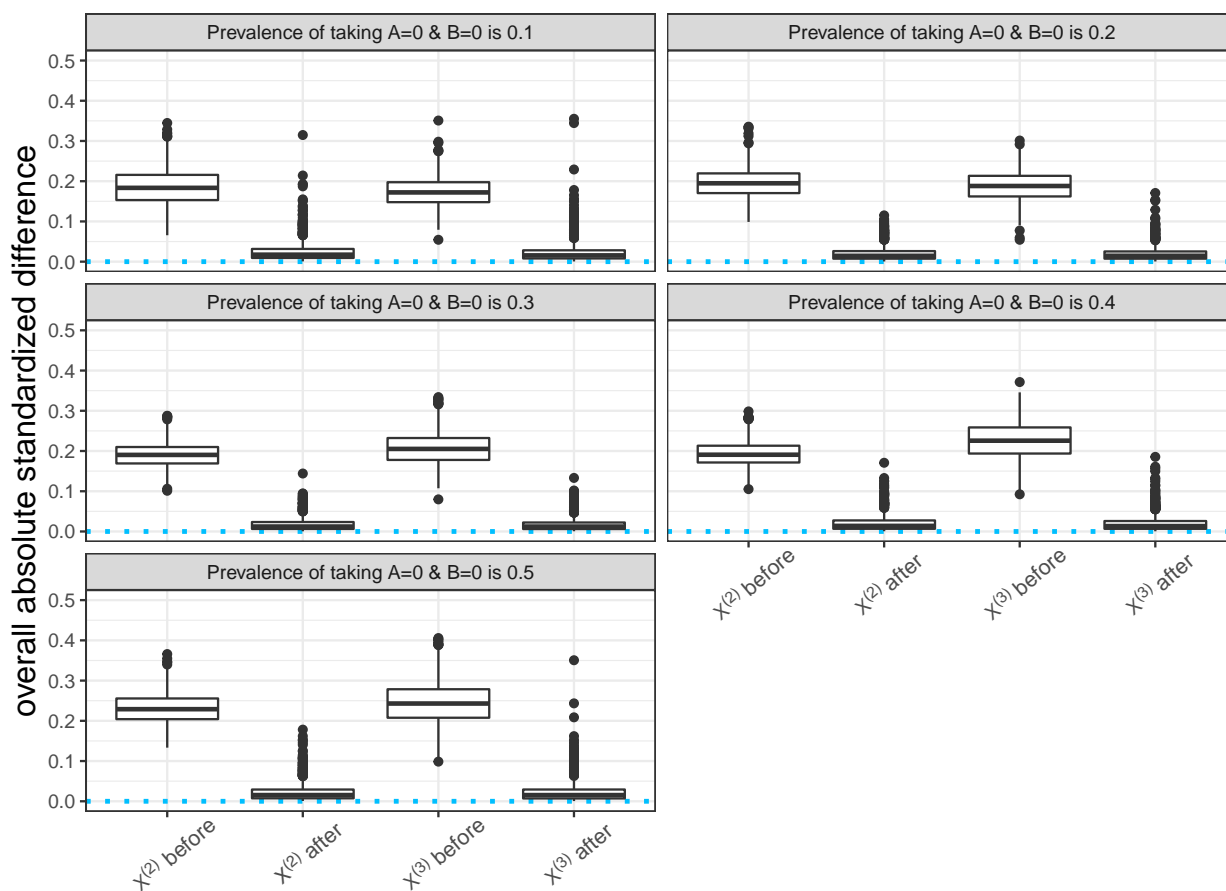


FIGURE 7 When all models are wrong: boxplot of overall balance (defined as the maximum absolute standardized difference across four drug pairs) of $X^{(2)}$ and $X^{(3)}$ across 1000 simulation runs, before and after weighting data using the proposed multiply robust estimator with balance constraints on $X^{(2)}$ and $X^{(3)}$. The dotted horizontal line represents zero imbalance

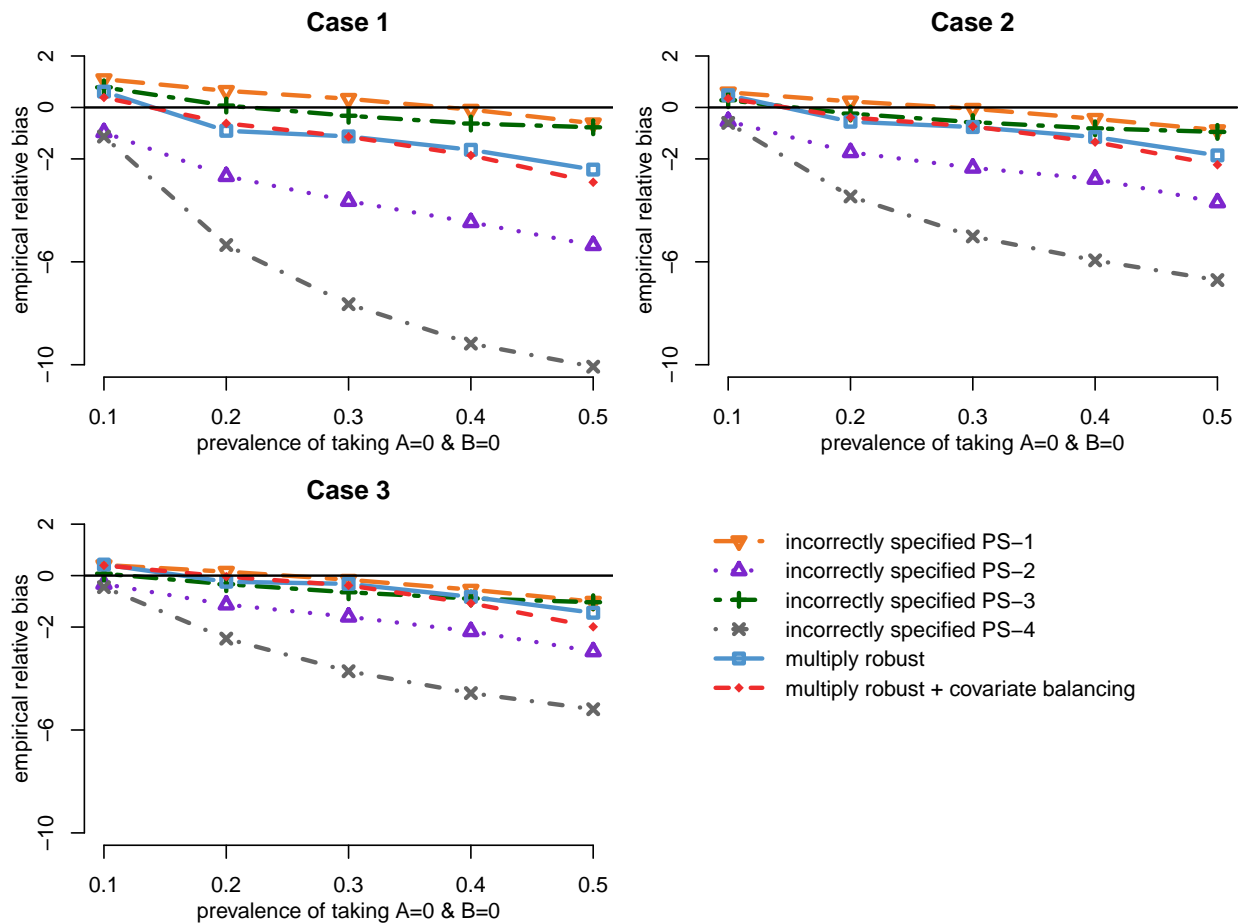


FIGURE 8 When all models are wrong and the true model (20) is not multinomial logistic: empirical relative bias with $n = 2000$. Incorrectly specified PS-1 to PS-4: IPTW estimators of the causal DDI using four incorrectly specified propensity score models (12)-(15), respectively; multiply robust and multiply robust + covariate balancing: the proposed multiply robust estimators using wrong models (12)-(15) simultaneously, without and with additional covariate balance constraints, respectively. Cases 1 to 3: the conditional outcome model parameter $\xi = 0.5, 1$ or 2 , yielding a true causal DDI of $-0.107, -0.170$ or -0.231

TABLE 1 Analysis results of the real-world kidney data estimating the causal DDI between NSAIDS and RAS-I. The DDI was quantified by comparing the difference in AKI risk between NSAID vs oxycodone in patients treated with RAS-I to the difference in AKI risk between NSAID vs oxycodone in patients treated with amlodipine

Method	Model	DDI	Standard error	95% Confidence interval
IPTW	PS-1	0.259%	0.0144	(−2.55%, 3.07%)
	PS-2	0.354%	0.0153	(−2.65%, 3.36%)
	PS-3	0.524%	0.0150	(−2.41%, 3.46%)
	PS-4	0.509%	0.0153	(−2.49%, 3.51%)
	PS-5	0.324%	0.0159	(−2.80%, 3.44%)
EL	PS-1 to PS-5	0.200%	0.0150	(−2.74%, 3.14%)
mELCB	PS-1 to PS-5	0.146%	0.0146	(−2.71%, 3.00%)

The DDI column represents the difference-in-difference estimate;

PS-1: multinomial logistic propensity score model including key risk factors;

PS-2: multinomial logistic propensity score model including key risk factors and possible risk factors;

PS-3: multinomial logistic propensity score model including key risk factors, possible risk factors, and other surrogate markers of overall severity of illness;

PS-4: multinomial logistic propensity score model including key risk factors, possible risk factors, other surrogate markers of overall severity of illness, and interaction terms;

PS-5: multinomial logistic propensity score model including key risk factors, possible risk factors, other surrogate markers of overall severity of illness, interaction terms, and non-linear terms;

EL: the first proposed multiply robust estimator using all five propensity score models simultaneously;

mELCB: the second proposed multiply robust estimator using all five propensity score models simultaneously, with additional balance constraints on age and chronic kidney disease;

(see text for the list of selected covariates in each model)

TABLE 2 Absolute standardized differences of age and chronic kidney disease (ckd) in each of the four drug pairs, before and after weighting the kidney data sample using various methods: i) IPTW estimator based on the simplest model PS-1, ii) IPTW estimator based on the fullest model PS-5, iii) the first proposed multiply robust estimator (EL) using models PS-1 to PS-5, and iv) the second proposed multiply robust estimator (mELCB) with balance constraints on age and ckd

Method	NSAIDS+RAS-I		NSAIDS+Amlodipine		Oxycodone+RAS-I		Oxycodone+Amlodipine	
	age	ckd	age	ckd	age	ckd	age	ckd
Unadjusted	0.220	0.188 [‡]	0.223 [†]	0.169	0.043	0.022	0.095	0.129
IPTW PS-1	0.005	0.020	0.156 [†]	0.157 [‡]	0.005	0.003	0.047	0.014
IPTW PS-5	0.009	0.015	0.200 [†]	0.245 [‡]	0.005	0.005	0.048	0.029
EL	0.016	0.005	0.137 [†]	0.146 [‡]	0.005	0.005	0.051	0.027
mELCB	<0.001	<0.001	0.002	<0.001	<0.001	<0.001	0.003 [†]	0.001 [‡]

[†] indicates the overall balance of age for each method, defined as the maximum absolute standardized difference across four drug pairs;

[‡] indicates the overall balance of ckd for each method, defined as the maximum absolute standardized difference across four drug pairs

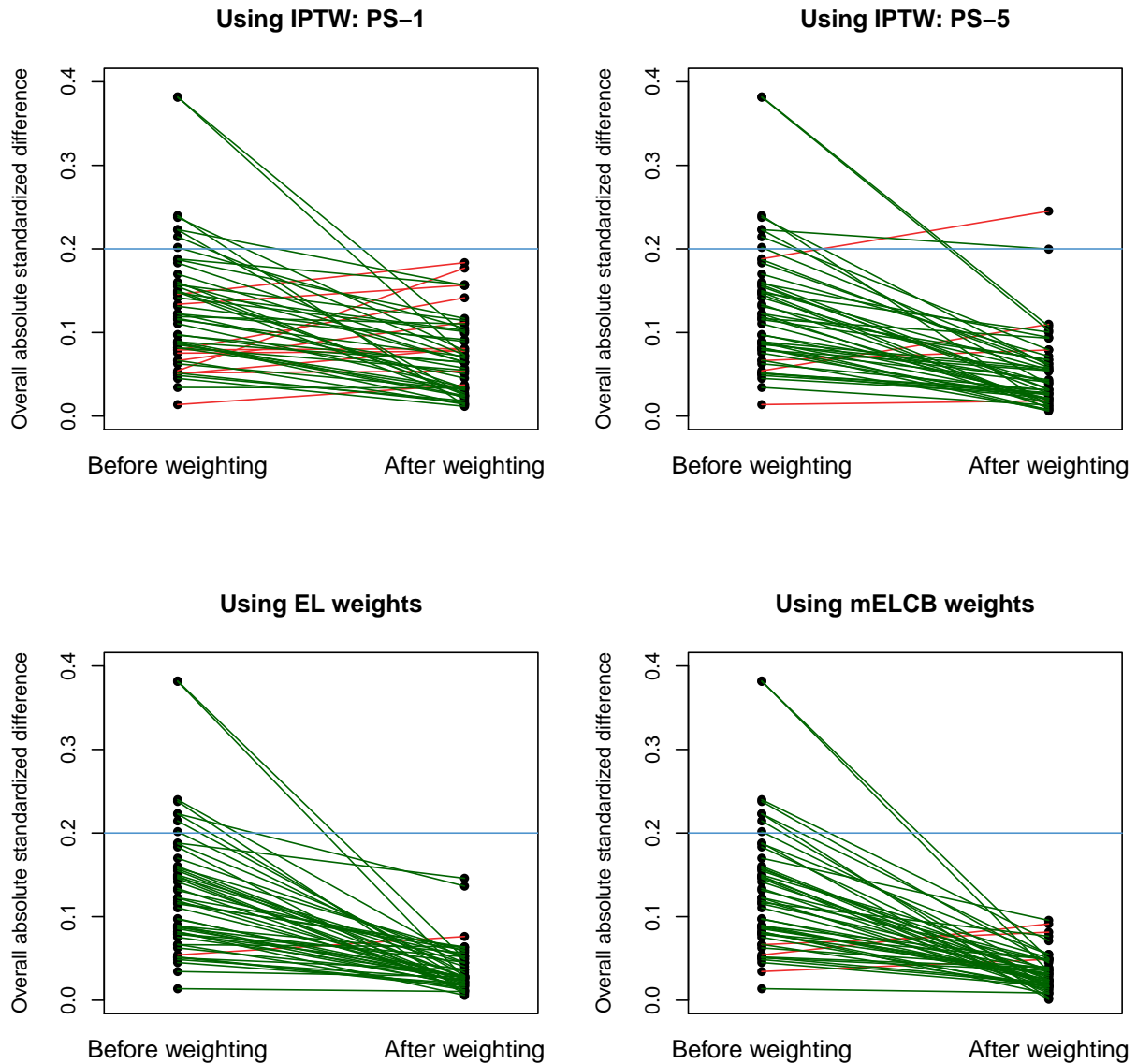


FIGURE 9 Overall absolute standardized differences of baseline covariates before and after weighting the kidney data sample using various methods: i) IPTW estimator based on the simplest model PS-1, ii) IPTW estimator based on the fullest model PS-5, iii) the first proposed multiply robust estimator (EL) using models PS-1 to PS-5, and iv) the second proposed multiply robust estimator (mELCB) with balance constraints on age and chronic kidney disease