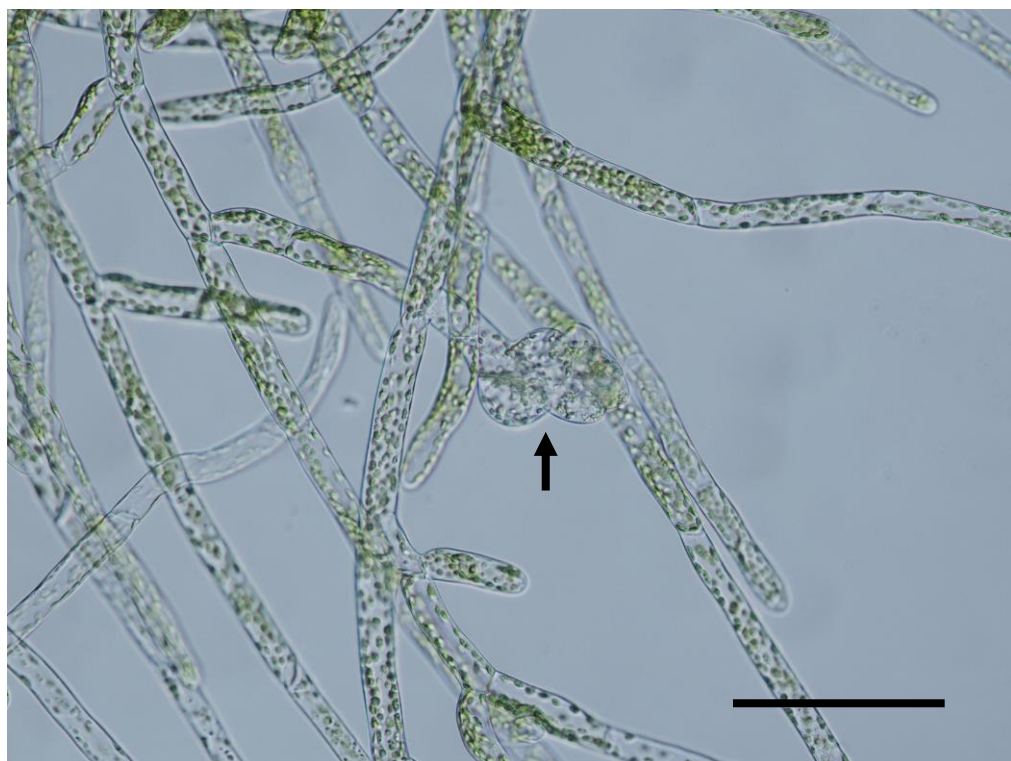


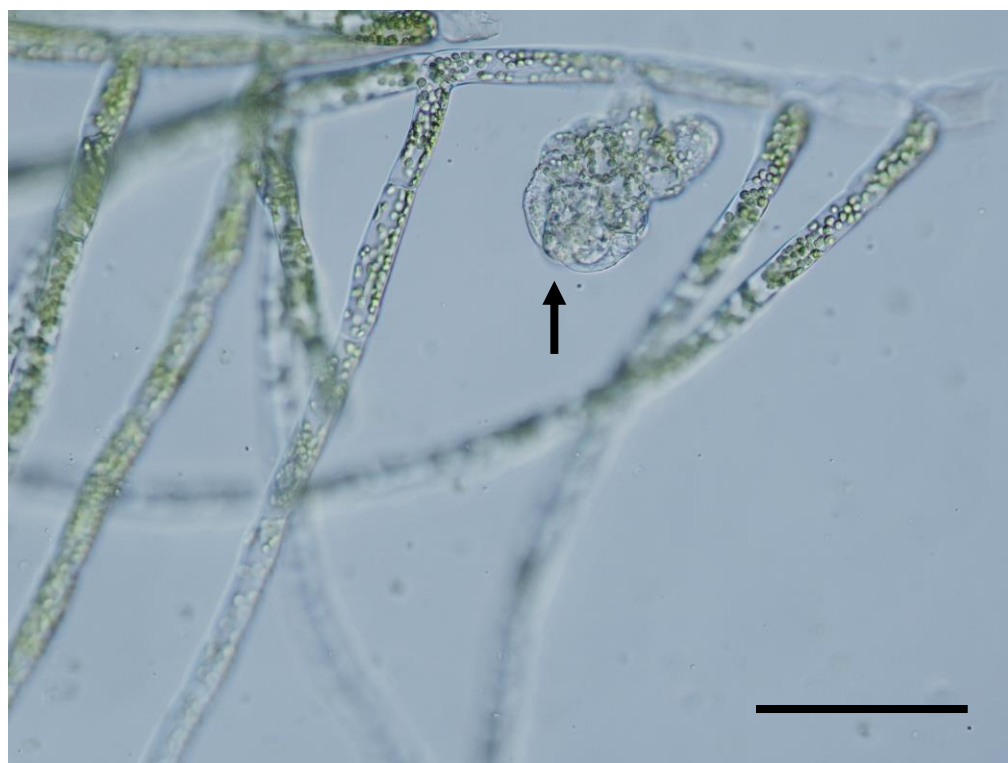
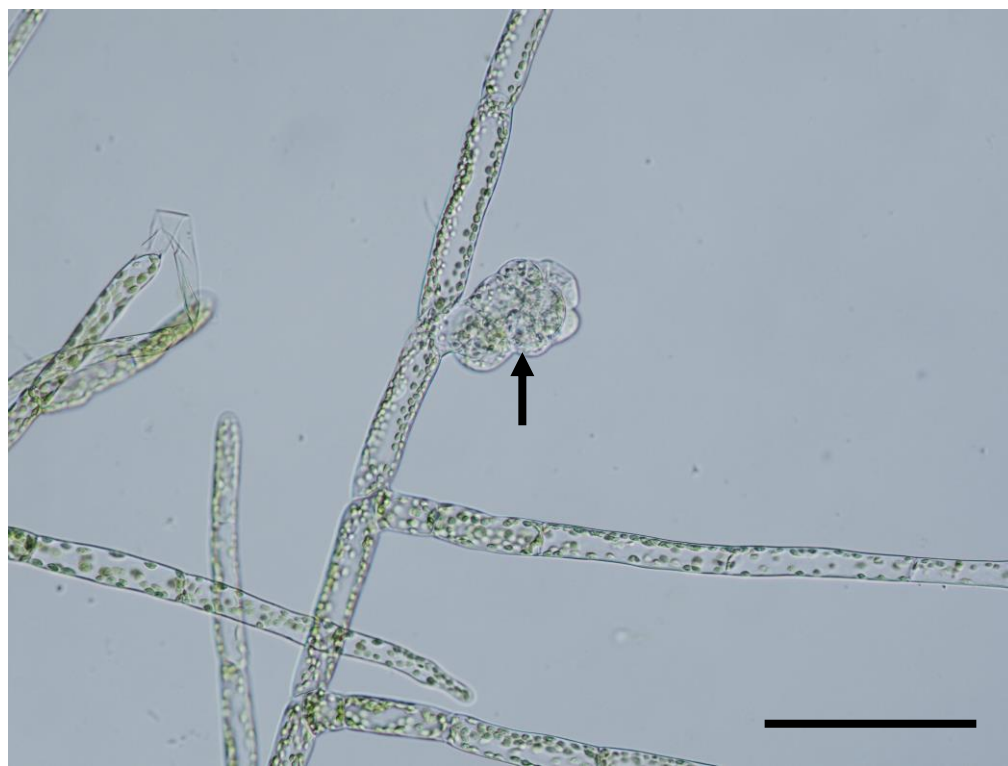
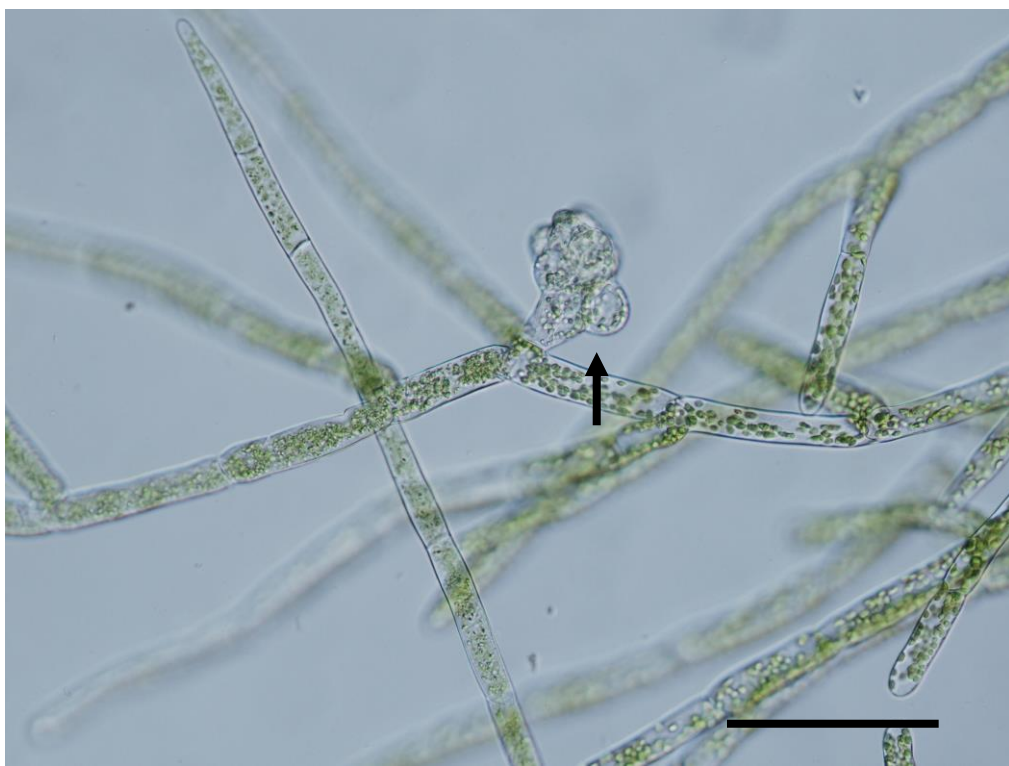
(a)

Early buds



(b)

Mid buds



(c)

Late buds

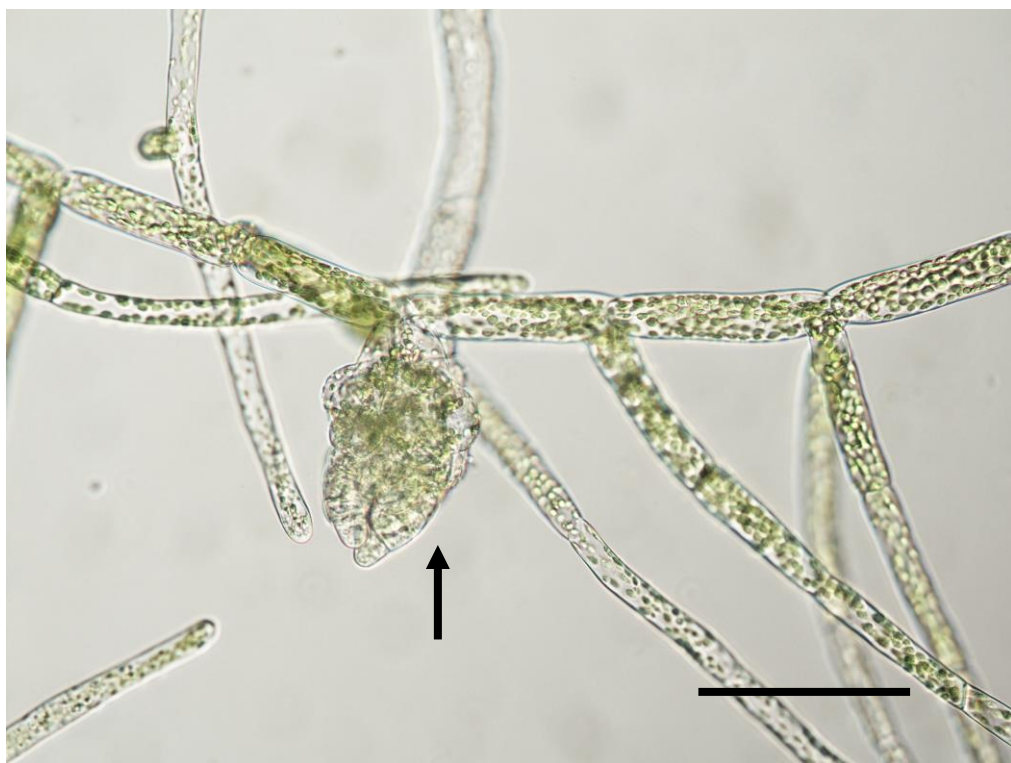
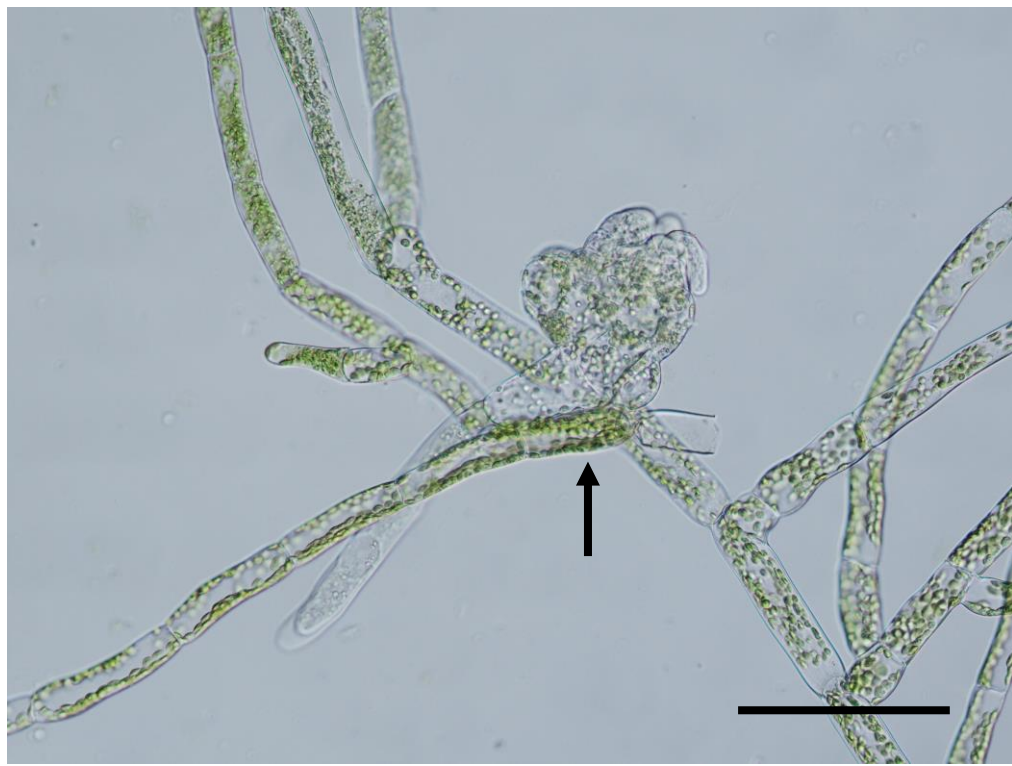
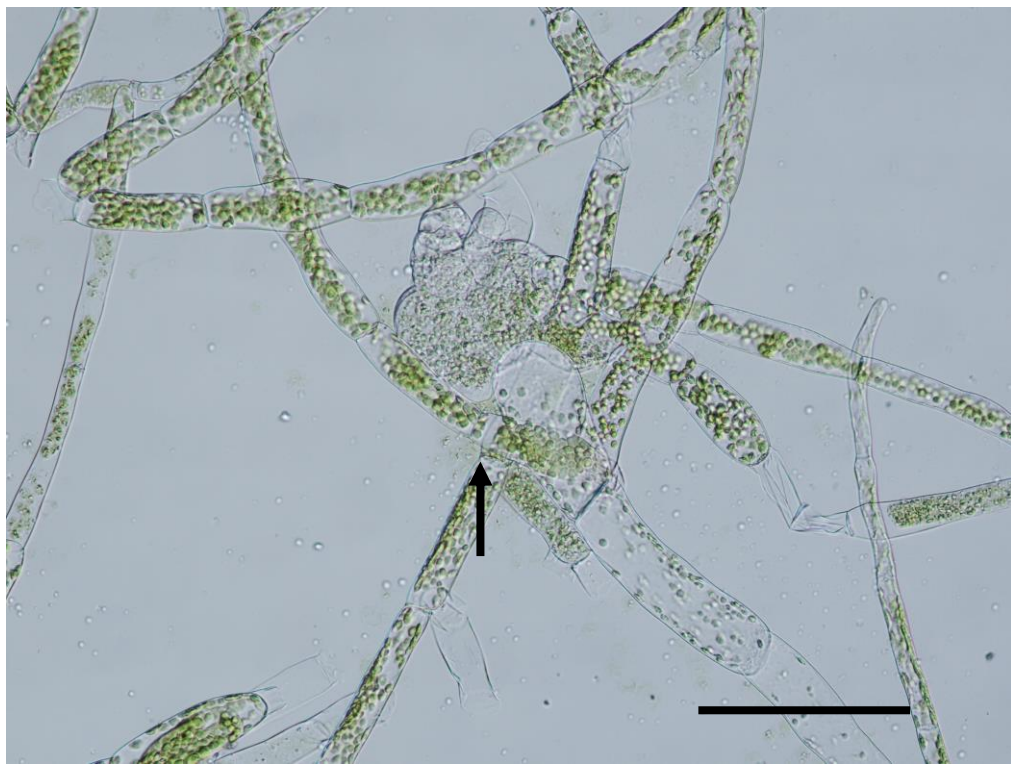


Figure S3. Classification of gametophore buds according to developmental stages.

The panels show the different classification of buds identified in 15-day-old plants. **(a)** Early buds are defined as having a bulb shape, **(b)** Mid buds had a heart shape, and **(c)** Late buds were those that had rhizoids. Scale bars, 50 μm . Buds are indicated by a black arrow.