



Data Sharing for  
Demographic Research

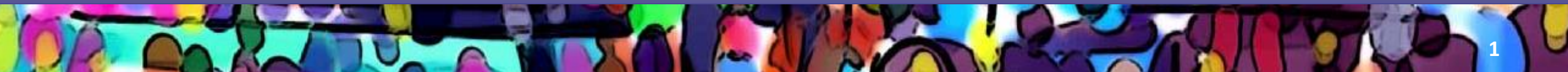
DSDR.ICPSR.UMICH.EDU

# Enabling Meta-analysis with a Research Data Repository

**John E Marcotte, Sarah Rush & Kelly Ogden-Schuette\***

*DSDR, ICPSR, Institute for Social Research  
University of Michigan*

\* Presenter



# How Can Research Data Repositories Support Meta-analysis?

- Meta-analysis is typically based on published results
- Research Data Repositories offer the opportunity to compare results directly from data
- Researchers can produce comparable estimates from similar data

# Enabling Sharing

- Cataloging and tagging
- Disclosure Risk Review
- Tiered access options
- Preservation

# Enabling Discovery

- Common location of study data on similar topics
- Standardized documentation
- Study- and variable-level metadata
- Search and compare studies
- Compare variables across studies
- Explore data and examine preliminary crosstabs

# Enabling Replication and Re-analysis

- Common data formats
- Compare variables
- Standardized codebooks (data dictionaries)

# Enabling Comparison of Results

- Access to data from multiple similar studies
- Comparable study metadata
- Estimate comparable regressions
- Bibliography of prior research