

Validation of Ionospheric Specifications During Geomagnetic Storms: TEC and foF2 during the 2013 March Storm Event-II

J. S. Shim¹, I.-S. Song¹, G. Jee², Y.-S. Kwak³, I. Tsagouri⁴, L. Goncharenko⁵, J. McInerney⁶, A. Vitt⁶, L. Rastaetter⁷, J. Yue^{7,8}, M. Chou^{7,8}, M. Codrescu⁹, A. J. Coster⁵, M. Fedrizzi⁹, T. J. Fuller-Rowell⁹, A. J. Ridley¹⁰, S. C. Solomon⁶

¹Department of Atmospheric Sciences, Yonsei University, Seoul, South Korea,

²Division of Atmospheric Sciences, Korea Polar Research Institute, Incheon, South Korea

³Space Science Division, Korea Astronomy and Space Science Institute, Daejeon, South Korea

⁴National Observatory of Athens, Penteli, Greece,

⁵Haystack Observatory, Westford, MA, USA,

⁶High Altitude Observatory, NCAR, Boulder, CO, USA,

⁷NASA GSFC, Greenbelt, MD, USA,

⁸Catholic University of America, Washington, DC, USA,

⁹NOAA SWPC, Boulder, CO, USA,

¹⁰Space Physics Research Laboratory, Univ. of Michigan, Ann Arbor, MI, USA

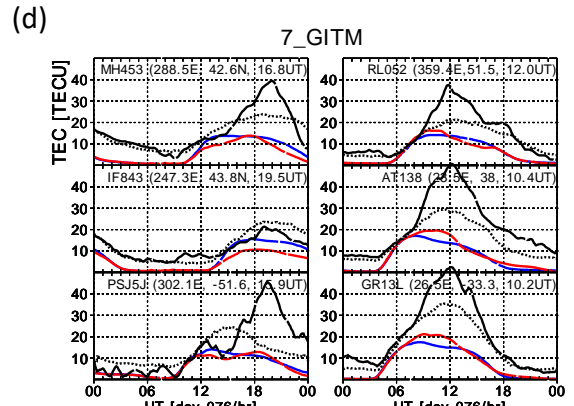
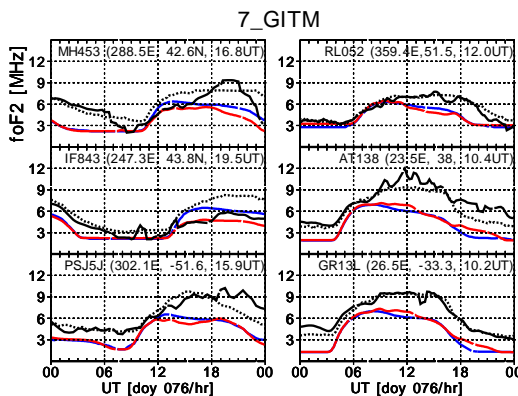
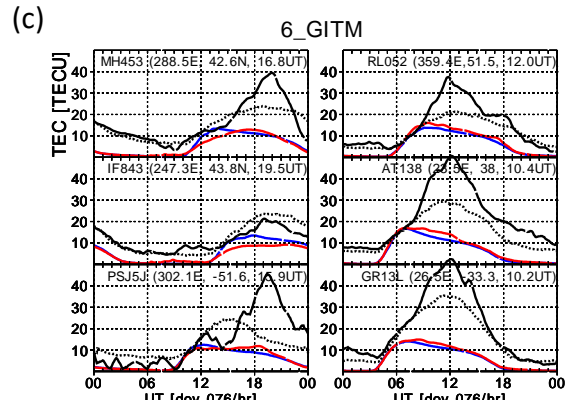
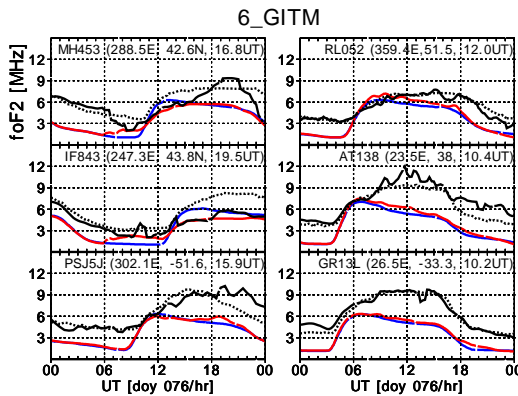
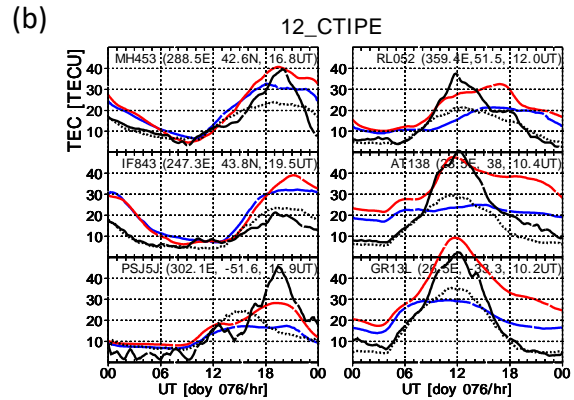
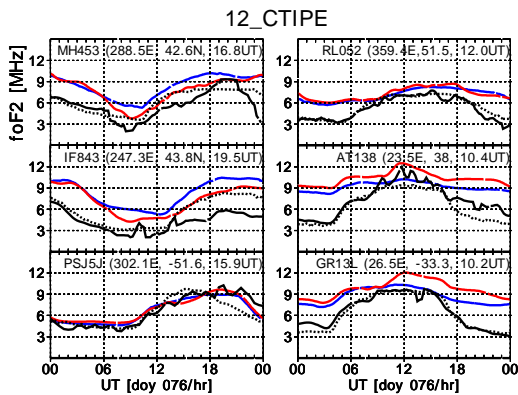
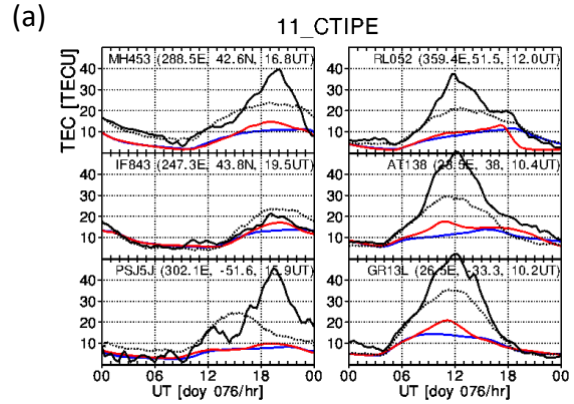
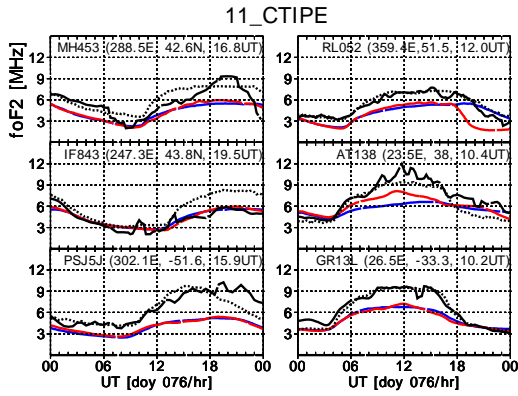
Contents of this file

Figures S1

Introduction

This supporting information file includes:

1. Figure S1: Comparison foF2 and TEC data with modeled values



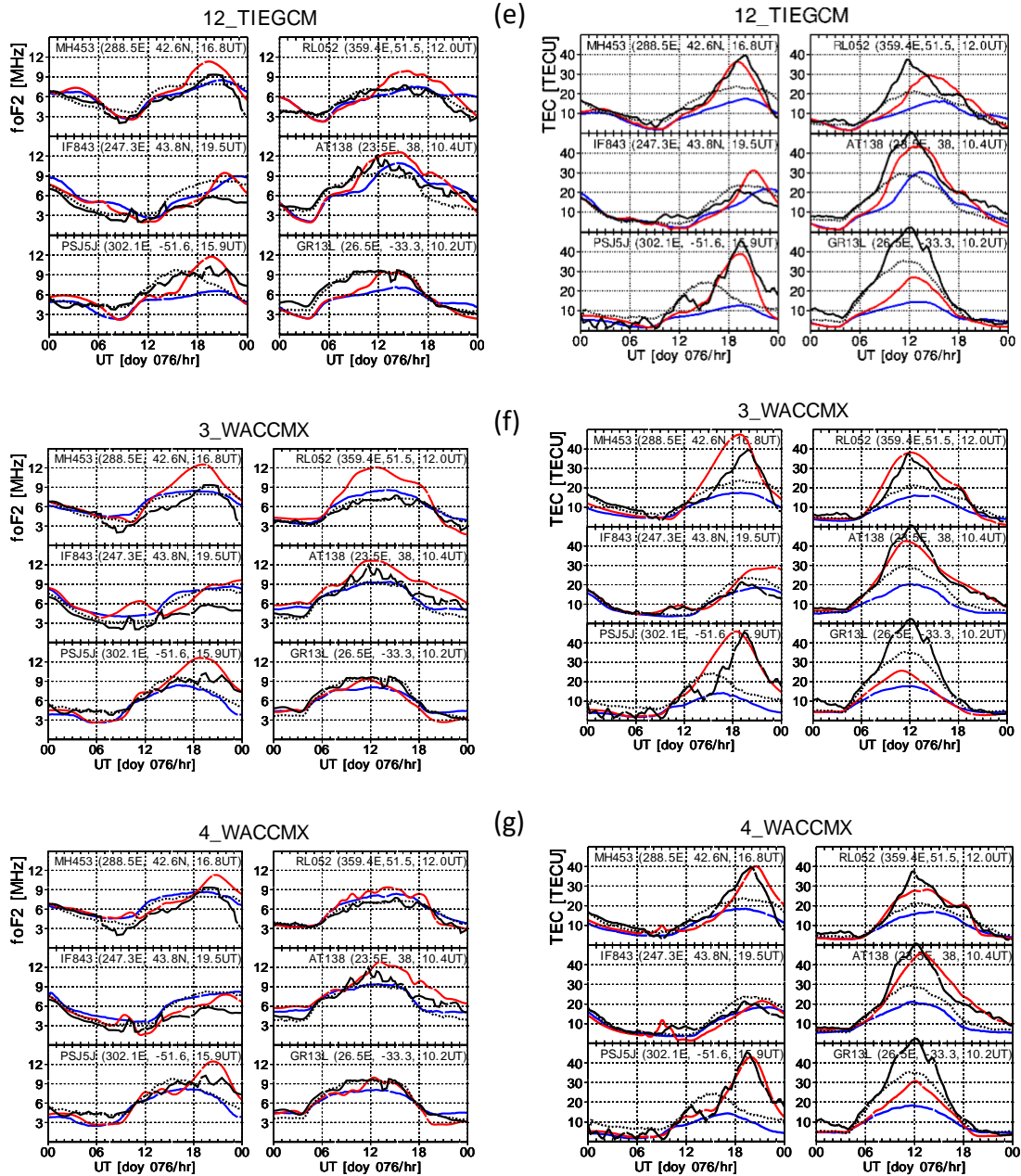


Figure S1. Comparison foF2 and TEC data with modeled values: (a) 11_CTIFE, (b) 12_CTIFE, (c) 6_GITM, (d) 7_GITM, (e) 12_TIEGCM, (f) 3_WACCM-X, and (g) 4_WACCM-X. In each plot, foF2 in the first two columns and TEC in the other two. Black solid and dotted lines denote observed storm time values and quiet-time reference (30-day median) respectively. Red and blue curves denote modeled storm time values and 30-day median.