

Friday 5/19 - Meeting with Human Factors Engineer, NASA Ames Research Center; ATD-2 Analytics Lead and Digital Information Platform (DIP), NASA Ames Research Center; Former Traffic Manager and Current Digital Information Platform (DIP), NASA Ames Research Center

## Agenda

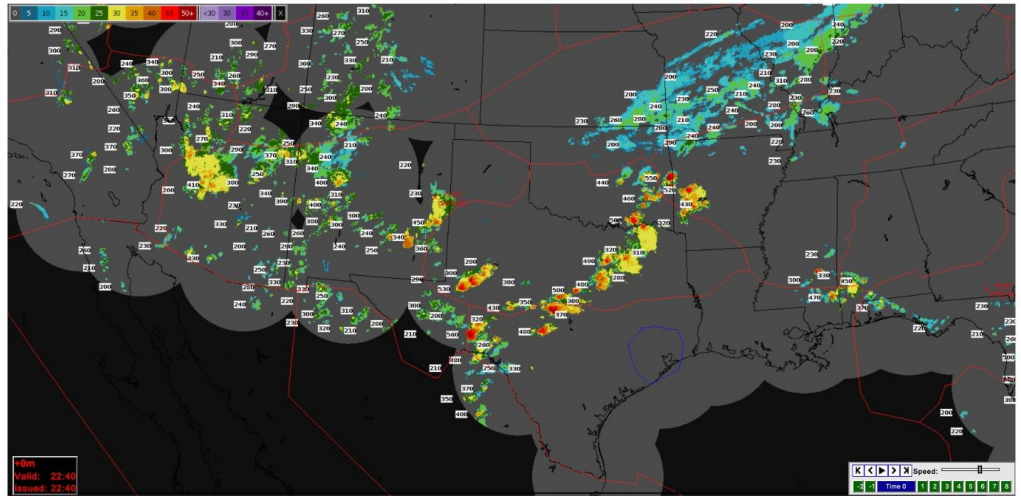
- Chat updates
  - Notifications
  - Name changes
  - Scheduling meeting
- NTML
  - Editing log after the fact (so they can add more detailed rationale)
  - Make user-provided rationale optional (we've heard from NTMOs that logging gets ignored during high-pressure events)
  - How do you recommend requesting / approving restrictions between facilities?
- Ops plan
  - Would it be helpful to incorporate it into the right monitor of our interface?
    - Closely related to communication and ops planning
- Web-Based vs Desktop
  - How is web-based defined? What is considered a web-based application?
    - Is it possible to have a dual-monitor interface with a web-based application?
- Dashboard
  - Better way to visualize cloud tops? Also incorporate a way to include base cloud height
  - Reactions? Feedback?
    - What would you want to see on a dashboard?
- FSM graphs
  - Is it ok to have 4 day outlook?

## Notes

- Chat Feedback
  - Notifications
    - "Looks good"
  - Name changes
    - Maybe allow user to control how 'NTMS ()' appears
      - Allow user to control the label but this is not critical
  - Scheduling meeting
    - Assuming we know of users' availability
    - Where would the 'Schedule Meeting' pop-up appear?
    - Maybe some members are 'more critical' than others so instead of 'most users are free between' it would be per person
      - Microsoft Outlook has a good feature for inspiration

- Maybe an input is who you need present, then it suggests potential meeting times when those people are free
      - Related to the Dashboard Calendar Feature
    - In Outlook you can indicate if you are free or available, but people cannot see what you are doing
      - They cannot see what your scheduled blocks include (saying 'Busy' rather than 'Out to Lunch')
- NTML Feedback
  - Editing log after the fact (so they can add more detailed rationale)
  - Make user-provided rationale optional (we've heard from NTMOs that logging gets ignored during high-pressure events)
    - "Remarks" is text-only, rationale can be selected
  - How do you recommend requesting / approving restrictions between facilities?
    - Could right-click to approve or double click
      - On us to decide
    - When a facility issues a restriction then issue another restriction related, they share a TMI-ID Tracking
      - Could envision on the UI the history of revisions
      - Or show what the different entries are that are related to each other
  - Providing options would be good because there are recurring patterns
    - Reason is one (only so many options)
      - Rationale is attached to reason
    - Field called 'Remarks'
      - Case-by-case situations where text is only relevant to that situation on those days
  - Will need to clarify which wireframes are related to the logging of NTML, and which wireframes are related to viewing NTML
  - Could be a lot more reasons for why a meeting/telecon needs to be scheduled than what we already have
    - Need to expand upon the list we have
      - If not able to, there may be a case to default to text rather than options
        - Or the options are generated as users create more rationale from text
  - May want to consider a better way to filter through NTML
    - Talked about Flightly suggestion
    - Allows users to better look at one log's history, and everything related to it
    - "Bottom card updates based on the focus you are in"
      - Based on your search/filter
      - Maybe there are quick links or buttons to further interact with it
- OPS Plan Feedback
  - Would it be helpful to incorporate it into the right monitor of our interface?
    - Closely related to communication and ops planning

- Ordered by number, and you have to comb through these to see which relates to each other
    - Just like NTML, need to organize better so what is related to each other can be better demonstrated in the UI
      - Grouping by restriction, by center, by type of restrictions, whether it is new, updated or canceled, etc.
  - Useful on the interface because you have a way to track events
  - Is there an ability to visually locate the restrictions on a map?
    - These restrictions are related to something going on in the NAS
    - Could we have a table/text to have a map or visual demonstrating where the problem areas are
      - This allows users to click on the area to view restrictions, and can zoom in/out accordingly
    - NTML, OPS Plan, all these things are trying to track the relationship between demand and capacity
- Web-Based vs Desktop
  - How is web-based defined? What is considered a web-based application?
    - Is it possible to have a dual-monitor interface with a web-based application?
      - Can manage this any way we want
      - Can have individual URLs that lead to separate pages (left vs. right monitor)
      - Can have a UI where there is the ability to quickly bring up widgets that will populate your page
        - Can open two browser tabs at the same address, and on each of these pages you can set what you want to see based on what you select
      - Could have a header with pages
      - May need to support sideCan imagine a dashboard where the user can select what they are summarizing
    - Specific airspace, specific event, etc.
    - Playing back the weather is fantastic
      - Maybe we can play back the restrictions that are associated
      - Or maybe we can display traffic and how it is moving, or the drop of demand in certain airspaces
        - Give a sense of the effectiveness of the restrictions that are being put out
  - Better way to visualize cloud tops? Also incorporate a way to include base cloud height
    - Use CoSPA for inspiration



- 
- Using CoSPA, ECO-TOPS (?) provide an estimate for the altitude for the top of the clouds
  - This is one key information
  - The color also indicates the level of precipitation which can be super useful
- FSM graphs
  - Is it ok to have a 4 day outlook?