

Oscar M. Vargas,^{1,11} Drew A. Larson,² Juvenal Batista,³ Xavier Cornejo,⁴ Bruno Garcia Luize,⁵ Diana Medellín-Zabala,⁸ Michel Ribeiro,⁶ Nathan P. Smith,⁷ Stephen A. Smith,⁸ Alberto Vicentini,⁹ Christopher W. Dick^{10,11}

¹ Department of Biological Sciences, California State Polytechnic University, Humboldt, Arcata, CA, 95521, USA

² Department of Biology, Indiana University, Bloomington, IN, 47405, USA

³ Herbario PMA, Departamento de Botánica, Universidad de Panamá, Estafeta Universitaria, Panamá City, Republic of Panama

⁴ Herbario GUAY, Departamento de Botánica, Facultad de Ciencias Naturales, Universidad de Guayaquil, Guayaquil, Ecuador

⁵ Laboratory of Evolutionary Ecology and Plant Genomics, Department of Plant Biology, Institute of Biology, University of Campinas, Campinas, Brazil.
<https://orcid.org/0000-0002-8384-8386>

⁶ Prefeitura Municipal de São Mateus, São Mateus, ES, Brazil

⁷ Rio das Furnas Private Natural Heritage Reserve, Alfredo Wagner, Santa Catarina, Brazil

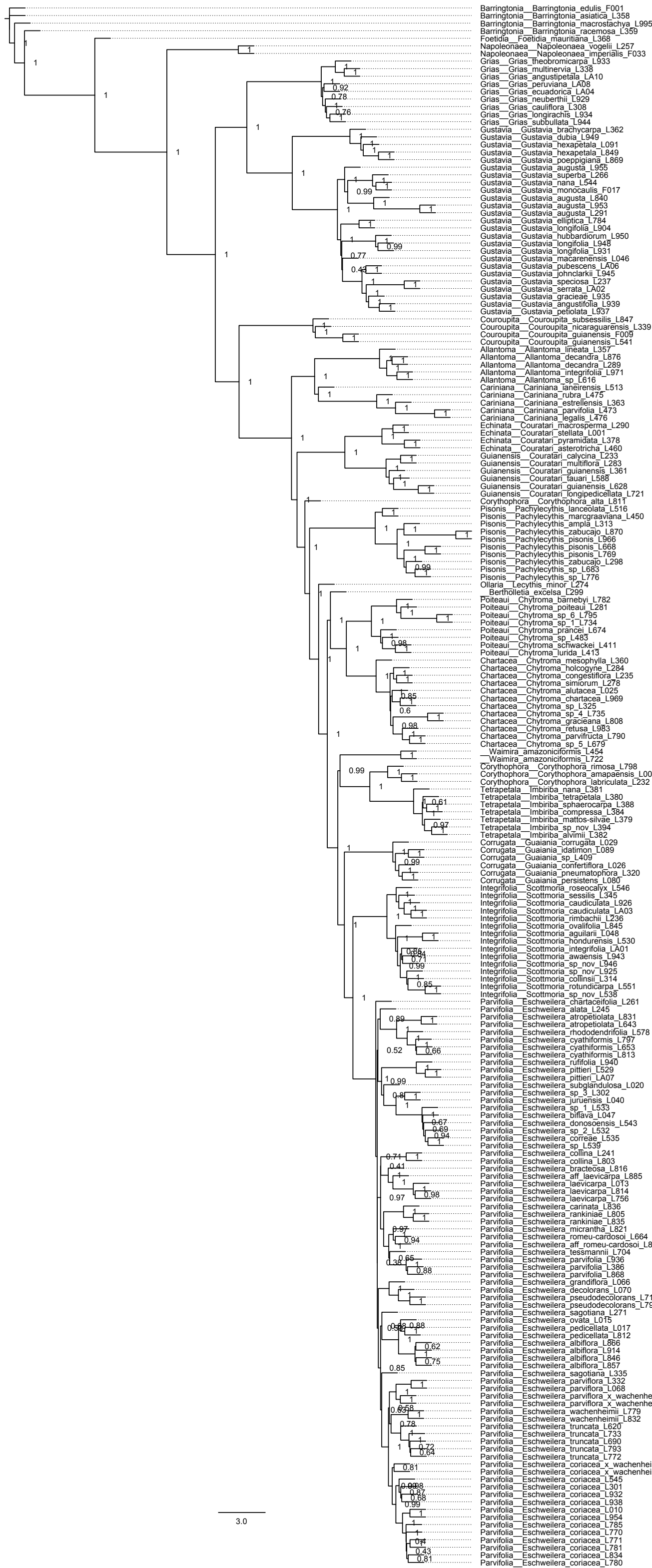
⁸ Department of Ecology and Evolutionary Biology and Herbarium. Department of Ecology and Evolutionary Biology, University of Michigan, Ann Arbor, MI 48109, USA.

⁹ National Institute of Amazonian Research (INPA), Manaus, AM, Brazil

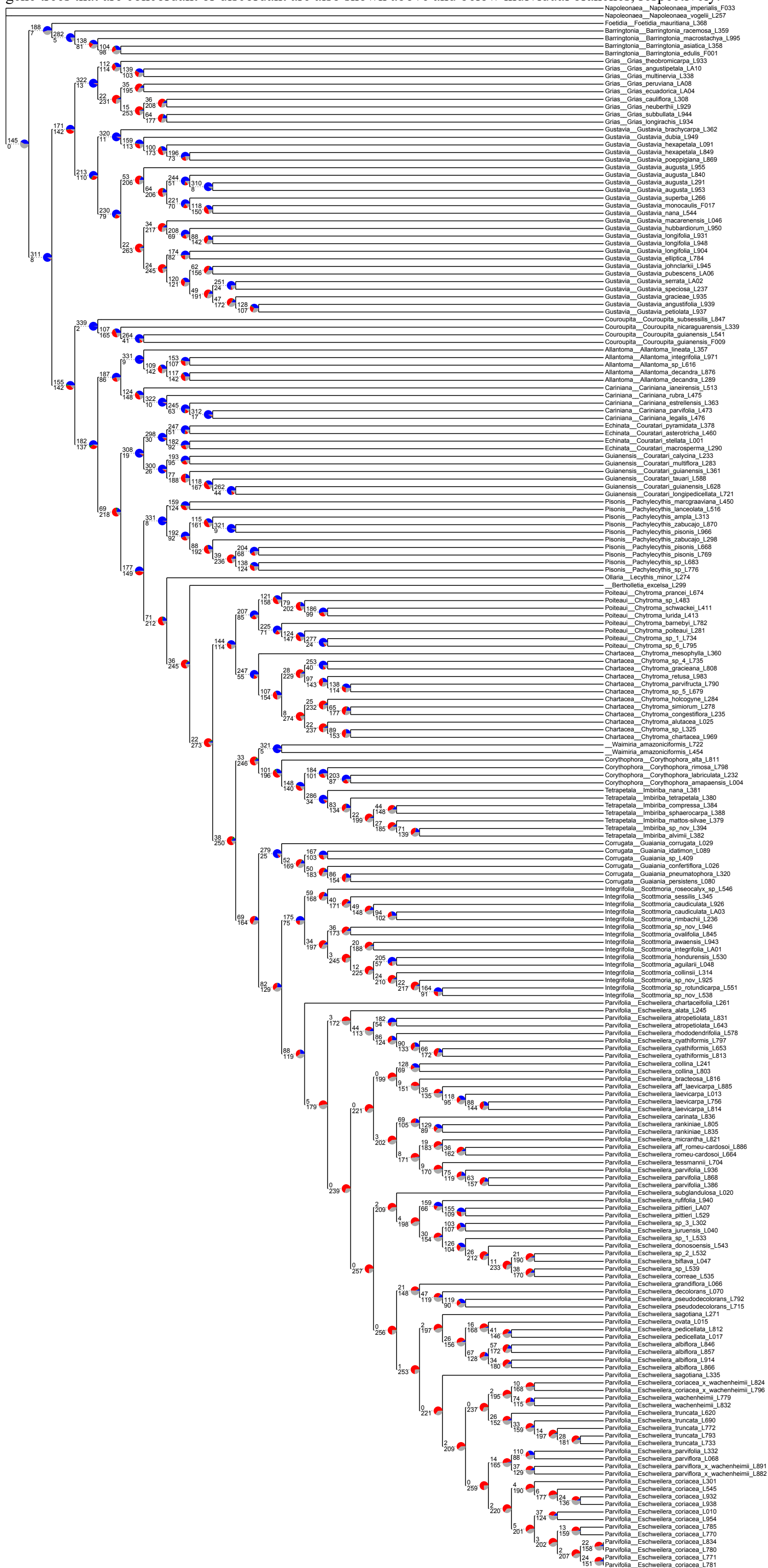
¹⁰ Smithsonian Tropical Research Institute, Panama City, Republic of Panama

¹¹ Corresponding authors (ov20@humboldt.edu and cwdick@umich.edu)

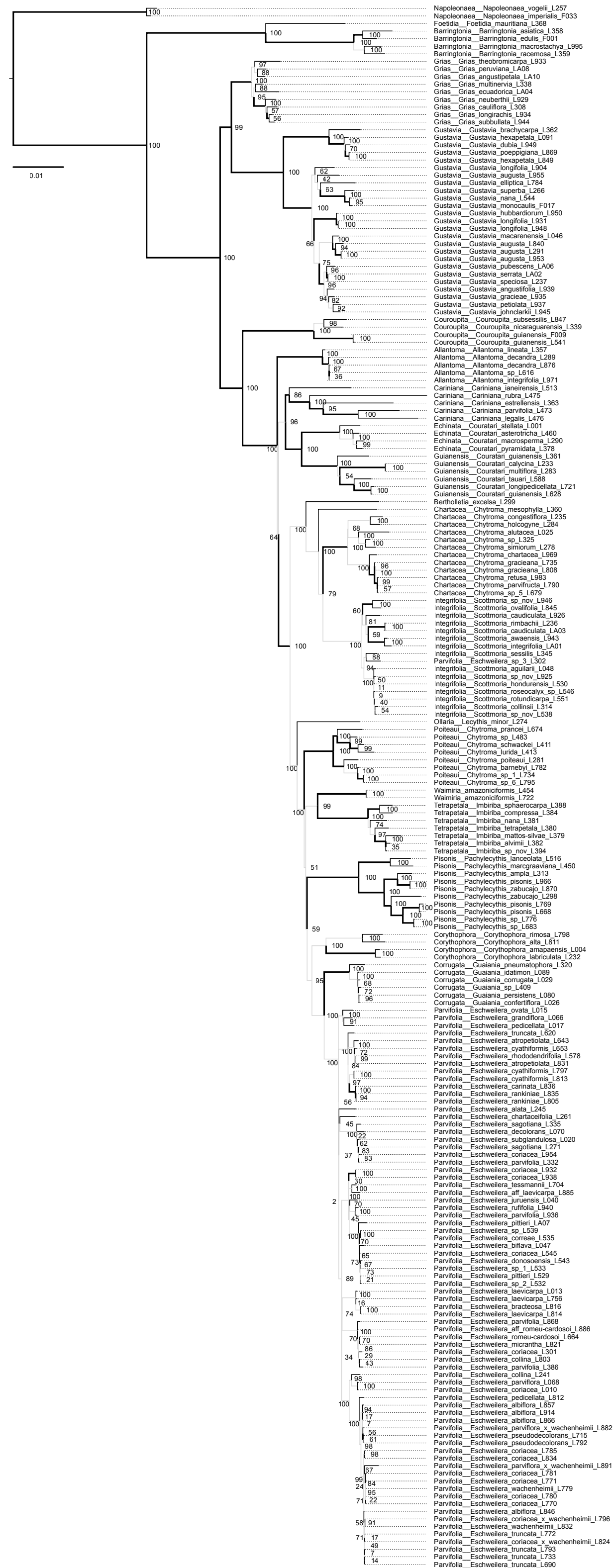
SUPPLEMENTARY FIGURE 1. Coalescent-consistent tree generated with ASTRAL. Branch-lengths are in coalescent units and node labels are ASTRAL local posterior probabilities.



SUPPLEMENTARY FIGURE 2. Phylogenetic conflict of gene trees with the nuclear tree, generated with phyparts. The proportion of gene trees that are concordant or discordant are represented in blue and red pies respectively. Uninformative gene trees, those with < 70% bootstrap support, are represented in gray. The number of gene trees that are concordant or discordant are also shown above and below individual branches, respectively.



SUPPLEMENTARY FIGURE 3. Plastome tree based on a concatenated matrix of 10 plastome regions. Node labels indicate standard, non-parametric bootstrap support. Branches that agree with the nuclear phylogeny are represented as thick black lines and conflicting branches are lighter gray.



SUPPLEMENTARY TABLE 1. Vouchers with their accession numbers and number of nuclear makers recovered.

Accession	Code	Species	Name in tree	Herbarium	Collector and number	Location	Clade	NCBI Biosample	SRA Accession - target	SRA Accession - WGS	# reads baits- total	genes
L289	AldeL289	<i>Allantoma decandra</i>	Allantoma decandra L289	NY	J. Janovec 2509	Peru	Allantoma	SAMN15447278	SRR12246861	SRR13514617	3,054,850	343
L876	CadeL876	<i>Allantoma decandra</i>	Allantoma decandra L876	PDBFF	J. B. D. Silva 24	Brazil, Amazonas, Manaus	Allantoma	SAMN15447286	SRR12246852	SRR13514608	3,579,090	341
L971	AlinL971	<i>Allantoma integrifolia</i>	Allantoma integrifolia L971	NY	S. A. Mori 27286	Brazil, Amazonas, Reserva Ducke, Km. 26 on the road to Itacoatiara.	Allantoma	SAMN15447279	SRR12246859	SRR13514615	3,955,136	343
L357	AlliL357	<i>Allantoma lineata</i>	Allantoma lineata L357	NY	Goeldi Museum Staff s.n.	Brazil	Allantoma	SAMN15447280	SRR12246858	SRR13514614	1,410,831	343
L616	CaesL616	<i>Allantoma sp</i>	Allantoma sp L616	PDBFF	P. Campos 1208	Brazil, Amazonas, Manaus	Allantoma	SAMN15447394	SRR12246969	SRR13514544	1,749,416	326
L358	BaasL358	<i>Barringtonia asiatica</i>	Barringtonia asiatica L358	NY	Chung s.n.	Cultived. Taiwan	Barringtonia	SAMN15447281	SRR12246857	SRR13514613	1,791,893	318
F001	BaedF001	<i>Barringtonia edulis</i>	Barringtonia edulis_F001	Fairchild Tropical Botanic Garden	T. M. Perez s.n.	Cultivated. Fairchild Tropical Botanic Garden	Barringtonia	SAMN15447282	SRR12246856	SRR13514612	2,930,415	335
L995	BamaL995	<i>Barringtonia macrostachya</i>	Barringtonia macrostachya L995	NY	D. S. Penneys 2051	Vietnam, Thua Thien-Hue, Phu. Tri. Bach Ma National Park.	Barringtonia	SAMN15447283	SRR12246855	SRR13514611	2,290,686	326
L359	BaraL359	<i>Barringtonia racemosa</i>	Barringtonia racemosa L359	NY	Bot. Gard. Nat. Sci. Mus. s.n.	Cultivated	Barringtonia	SAMN15447284	SRR12246854	SRR13514610	1,965,076	338
L299	BeexL299	<i>Bertholletia excelsa</i>	Bertholletia excelsa L299	NY	S. A. Mori 25637	Peru	Bertholletia	SAMN15447285	SRR12246853	SRR13514609	1,180,735	343
L363	CaesL363	<i>Cariniana estrellensis</i>	Cariniana estrellensis L363	NY	M. Nee 52828	Bolivia	Carinaria	SAMN15447287	SRR12246851	SRR13514607	1,356,684	341
L513	CaiaL513	<i>Cariniana ianeirensis</i>	Cariniana ianeirensis L513	RB	M. Ribeiro 1029	Brazil, Espirito Santo	Carinaria	SAMN15447288	SRR12246850	SRR13514606	2,833,310	343
L476	CaleL476	<i>Cariniana legalis</i>	Cariniana legalis L476	RB	M. Ribeiro 951	Brazil, Espirito Santo	Carinaria	SAMN15447289	SRR12246848	SRR13514604	2,422,019	342
L473	CapaL473	<i>Cariniana parvifolia</i>	Cariniana parvifolia L473	RB	M. Ribeiro 911	Brazil, Espirito Santo	Carinaria	SAMN15447290	SRR12246847	SRR13514603	2,931,562	343
L475	CaruL475	<i>Cariniana rubra</i>	Cariniana rubra L475	RB	T. Rezende 01	Brazil, Goias	Carinaria	SAMN15447291	SRR12246846	SRR13514602	2,964,300	341
L025	LealL025	<i>Chytroma alutacea</i>	Chytroma alutacea L025	NY	S. A. Mori 24622	French Guiana	Chartacea	SAMN15447364	SRR12247003	SRR13514578	2,605,517	338
L782	LebaL782	<i>Chytroma barnebyi</i>	Chytroma barnebyi L782	PDBFF	D. A. Larson 14	Brazil, Amazonas, Rio Preto da Eva	Poiteau	SAMN15447366	SRR12247001	SRR13514576	1,927,627	338
L969	Lerol969	<i>Chytroma chartacea</i>	Chytroma chartacea L969	NY	S. A. Mori 27278	Brazil, Amazonas, Rio Negro. Just upstream from the Anavilhanas EcoLodge just downstream from Novo...	Chartacea	SAMN15447387	SRR12246977	SRR13514552	3,777,461	342
L235	LecoL235	<i>Chytroma congestiflora</i>	Chytroma congestiflora L235	NY	J.-F. Molino 2019	French Guiana	Chartacea	SAMN15447405	SRR12246957	SRR13514532	2,412,906	333
L808	LegrL808	<i>Chytroma graciana</i>	Chytroma graciana L808	PDBFF	D. A. Larson 41	Brazil, Amazonas, Rio Preto da Eva	Chartacea	SAMN15447369	SRR12246996	SRR13514571	2,746,427	332
L284	LehoL284	<i>Chytroma holcogyne</i>	Chytroma holcogyne L284	NY	M.-F. Prévost 4505	French Guiana	Chartacea	SAMN15447370	SRR12246995	SRR13514570	2,569,466	339
L413	LeluL413	<i>Chytroma lurida</i>	Chytroma lurida L413	RB	M. Ribeiro 1137	Brazil, Espirito Santo	Poiteau	SAMN15447373	SRR12246992	SRR13514567	1,910,821	330
L360	LemeL360	<i>Chytroma mesophylla</i>	Chytroma mesophylla L360	NY	R. Aguilar 8449	Costa Rica	Chartacea	SAMN15447375	SRR12246990	SRR13514565	4,353,362	343
L790	LepaL790	<i>Chytroma parvifructa</i>	Chytroma parvifructa L790	PDBFF	D. A. Larson 22	Brazil, Amazonas, Rio Preto da Eva	Chartacea	SAMN15447377	SRR12246988	SRR13514563	2,835,318	343
L281	LepoL281	<i>Chytroma poiteau</i>	Chytroma poiteau L281	NY	M.-F. Prévost 4502	French Guiana	Poiteau	SAMN15447383	SRR12246981	SRR13514556	3,321,479	343
L674	LepL674	<i>Chytroma prancei</i>	Chytroma prancei L674	PDBFF	C. W. Dick LEPR1052	Brazil, Amazonas, Rio Preto da Eva	Poiteau	SAMN15447385	SRR12246979	SRR13514554	3,244,283	343
L983	Lerel983	<i>Chytroma retusa</i>	Chytroma retusa L983	NY	S. A. Mori 27273	Brazil, Amazonas, Distrito Agropecuário, Reserva 1501 (km 41) da WWF/INPA Projeto Dinâmica Biológi...	Chartacea	SAMN15447386	SRR12246978	SRR13514553	2,434,299	322
L411	LescL411	<i>Chytroma schwackei</i>	Chytroma schwackei L411	RB	M. Ribeiro 1022	Brazil, Minas Gerais	Poiteau	SAMN15447388	SRR12246976	SRR13514551	7,205,242	343
L278	Lesil278	<i>Chytroma simiorum</i>	Chytroma simiorum L278	NY	S. A. Mori 25519	Suriname or French Guiana	Chartacea	SAMN15447389	SRR12246974	SRR13514549	4,139,527	343
L325	LepL325	<i>Chytroma sp</i>	Chytroma sp L325	NY	S. A. Mori 25753	French Guiana	Chartacea	SAMN15447384	SRR12246980	SRR13514555	3,680,482	332
L795	EsspL795	<i>Chytroma sp</i>	Chytroma sp06 L795	PDBFF	D. A. Larson 27	Brazil, Amazonas, Rio Preto da Eva	Poiteau	SAMN15447402	SRR12246960	SRR13514535	4,649,329	343
L679	LespL679	<i>Chytroma sp</i>	Chytroma sp05 L679	PDBFF	C. W. Dick LESP1366	Brazil, Amazonas, Rio Preto da Eva	Chartacea	SAMN15447406	SRR12246956	SRR13514531	3,258,470	336
L734	LespL734	<i>Chytroma sp</i>	Chytroma sp01 L734	PDBFF	C. W. Dick LESP977	Brazil, Amazonas, Rio Preto da Eva	Poiteau	SAMN15447407	SRR12246955	SRR13514530	2,260,479	335
L735	LespL735	<i>Chytroma sp</i>	Chytroma sp04 L735	PDBFF	C. W. Dick LESP997	Brazil, Amazonas, Rio Preto da Eva	Chartacea	SAMN15447408	SRR12246954	SRR13514529	3,166,846	343
L483	EscoL483	<i>Chytroma sp</i>	Chytroma sp L483	RB	M. Ribeiro 1241	Brazil, Bahia	Poiteau	SAMN15447397	SRR12246966	SRR13514541	3,444,924	343
L811	CoalL811	<i>Corythophora alta</i>	Corythophora alta L811	PDBFF	D. A. Larson 44	Brazil, Amazonas, Rio Preto da Eva	Corythophora	SAMN15447292	SRR12246845	SRR13514445	8,065,970	342
L004	CoamL004	<i>Corythophora amapaensis</i>	Corythophora amapaensis L004	NY	S. A. Mori 24148	French Guiana	Corythophora	SAMN15447293	SRR12246844	SRR13514444	2,245,553	333
L232	ColaL232	<i>Corythophora labriculata</i>	Corythophora labriculata L232	NY	S. A. Mori 25518	Suriname	Corythophora	SAMN15447300	SRR12246836	SRR13514436	2,249,221	343
L798	CoriL798	<i>Corythophora rimosa</i>	Corythophora rimosa L798	PDBFF	D. A. Larson 30	Brazil, Amazonas, Rio Preto da Eva	Corythophora	SAMN15447306	SRR12246830	SRR13514430	2,876,832	343
L460	CoasL460	<i>Couratari asterotricha</i>	Couratari asterotricha L460	RB	M. Ribeiro 896	Brazil, Espirito Santo	Echinata	SAMN15447294	SRR12246843	SRR13514443	2,852,783	342
L233	CocaL233	<i>Couratari calycina</i>	Couratari calycina L233	NY	J.-F. Molino 2018	French Guiana	Guianensis	SAMN15447295	SRR12246842	SRR13514442	3,441,581	343
L361	CoguL361	<i>Couratari guianensis</i>	Couratari guianensis L361	NY	R. Aguilar 8450	Costa Rica	Guianensis	SAMN15447297	SRR12246840	SRR13514440	2,815,336	339
L628	CoguL628	<i>Couratari guianensis</i>	Couratari guianensis L628	PDBFF	T. C. R. Carvalho 567	Brazil, Amazonas, Manaus	Guianensis	SAMN15447299	SRR12246837	SRR13514437	1,833,700	338
L721	ColoL721	<i>Couratari longipedicellata</i>	Couratari longipedicellata L721	PDBFF	C. W. Dick CULO7534	Brazil, Amazonas, Rio Preto da Eva	Guianensis	SAMN15447301	SRR12246835	SRR13514435	1,346,951	332
L290	ComaL290	<i>Couratari macrosperma</i>	Couratari macrosperma L290	NY	J. Janovec 2506	Peru	Echinata	SAMN15447302	SRR12246834	SRR13514434	1,334,447	326
L283	ComuL283	<i>Couratari multiflora</i>	Couratari multiflora L283	NY	M.-F. Prévost 4503	French Guiana	Guianensis	SAMN15447303	SRR12246833	SRR13514433	5,029,986	343
L378	CopyL378	<i>Couratari pyramidata</i>	Couratari pyramidata L378	RB	M. Ribeiro 1156	Brazil, Espirito Santo	Echinata	SAMN15447305	SRR12246831	SRR13514431	2,521,447	339
L001	CostL001	<i>Couratari stellata</i>	Couratari stellata L001	NY	S. A. Mori 24095	French Guiana	Echinata	SAMN15447307	SRR12246829	SRR13514429	3,087,830	343
L588	Cotal588	<i>Couratari tauri</i>	Couratari tauri L588	PDBFF	R. V. de Almeida 2081	Brazil, Amazonas, Manaus	Guianensis	SAMN15447309	SRR12246826	SRR13514426	3,113,148	341
F009	CoguF009	<i>Couroupita guianensis</i>	Couroupita guianensis_F009	Fairchild Tropical Botanic Garden	T. M. Perez s.n.	Cultivated. Fairchild Tropical Botanic Garden	Couroupita	SAMN15447296	SRR12246841	SRR13514441	3,314,161	340
L541	CoguL541	<i>Couroupita guianensis</i>	Couroupita guianensis L541	UP	J. E. Batista G. 1312	Panama	Couroupita	SAMN15447298	SRR12246839	SRR13514439	8,769,344	343
L339	ConiL339	<i>Couroupita nicaraguensis</i>	Couroupita nicaraguensis L339	NY	R. Aguilar 8039	Costa Rica	Couroupita	SAMN15447304	SRR12246832	SRR13514432	3,757,983	343
L847	CosuL847	<i>Couroupita subsessilis</i>	Couroupita subsessilis L847	PDBFF	B. G. Luize 492	Brazil, Amazonas, Anori	Couroupita	SAMN15447308	SRR12246828	SRR13514428	5,053,504	343
L885	EscoL885	<i>Eschweilera aff laevicarpa</i>	Eschweilera aff laevicarpa L885	PPBIO-INPA	P. F. Souza 960	Brazil, Amazonas, BR319	Parvifolia	SAMN15447277	SRR12246862	SRR13514618	2,785,480	341
L886	EsamL886	<i>Eschweilera aff romeu-cardosoi</i>	Eschweilera aff_romeu-cardosoi_L886	PPBIO-INPA	P. F. Souza 977	Brazil, Amazonas, BR319	Parvifolia	SAMN15447276	SRR12246863	SRR13514619	5,391,704	343
L245	EsalL245	<i>Eschweilera alata</i>	Eschweilera alata L245	NY	M.-F. Prévost 4607	French Guiana	Parvifolia	SAMN15447262	SRR12246877	SRR13514452	1,851,850	343
L914	EsalL914	<i>Eschweilera albiflora</i>	Eschweilera albiflora L914	NY	B. M. Torke 626	Bolivia, La Paz, Iturrealde, "Pampas del Madidi" area of the middle reaches of the Rio Madidi basin	Parvifolia	SAMN15447171	SRR12246998	SRR13514573	3,328,230	326
L846	EsalL846	<i>Eschweilera albiflora</i>	Eschweilera albiflora L846	PDBFF	B. G. Luize 491	Brazil, Amazonas, Beruri	Parvifolia	SAMN15447169	SRR12247038	SRR13514629	3,699,197	338
L857	EsalL857	<i>Eschweilera albiflora</i>	Eschweilera albiflora L857	PDBFF	B. G. Luize 512	Brazil, Amazonas, Beruri	Parvifolia	SAMN15447170	SRR12247037	SRR13514628	4,187,382	342
L866	Espel866	<i>Eschweilera albiflora</i>	Eschweilera albiflora L866	PDBFF	B. G. Luize 523	Brazil, Amazonas, Uarini	Parvifolia	SAMN15447172	SRR12246947	SRR13514522	3,120,277	343
L643	EsatL643	<i>Eschweilera atropetiolata</i>	Eschweilera atropetiolata L643	PDBFF	C. Chiva 574	Brazil, Amazonas, Manaus	Parvifolia	SAMN15447173	SRR12246936	SRR13514511	3,443,526	338
L831	EsatL831	<i>Eschweilera atropetiolata</i>	Eschweilera atropetiolata L831	PDBFF	D. A. Larson 64	Brazil, Amazonas, Rio Preto da Eva	Parvifolia	SAMN15447176	SRR12246903	SRR13514478	3,187,428	331
L047	EsbiL047	<i>Eschweilera biflora</i>	Eschweilera biflora L047	NY	R. Aguilar 6517	French Guiana	Parvifolia	SAMN15447263	SRR12246876	SRR13514451	3,761,346	343
L816	EsbrL816	<i>Eschweilera bracteosa</i>	Eschweilera bracteosa L816	PDBFF	D. A. Larson 49	Brazil, Amazonas, Rio Preto da Eva	Parvifolia	SAMN15447181	SRR12246849	SRR13514605	3,544,340	343
L836	EscaL836	<i>Eschweilera carinata</i>	Eschweilera carinata L836	PDBFF	D. A. Larson 69	Brazil, Amazonas, Rio Preto da Eva	Parvifolia	SAMN15447236	SRR12246906	SRR13514481	5,647,527	343
L261	EschL261	<i>Eschweilera chartaceifolia</i>	Eschweilera chartaceifolia L261	NY	S. A. Mori 25556	French Guiana	Parvifolia	SAMN15447264	SRR12246875	SRR13514450	3,532,081	343
L241	EscoL241	<i>Eschweilera collina</i>	Eschweilera collina L241	NY	M.-F. Prévost 4588	French Guiana	Parvifolia	SAMN15447182	SRR12246838	SRR13514438	1,616,563	337
L803	EscoL803	<i>Eschweilera collina</i>	Eschweilera collina L803	PDBFF	D. A. Larson 36	Brazil, Amazonas, Rio Preto da Eva	Parvifolia	SAMN15447184	SRR12247056	SRR13514416	2,513,452	339
L010	EscoL010	<i>Eschweilera coriacea</i>	Eschweilera coriacea L010	NY	S. A. Mori 24084	French Guiana	Parvifolia	SAMN15447187	SRR12247020	SRR13514595	6,829,275	343
L301	EscoL301	<i>Eschweilera coriacea</i>	Eschweilera coriacea L301	NY	S. A. Mori 25633	Peru	Parvifolia	SAMN15447188	SRR12247009	SRR1351458		

L938	EscoL938	<i>Eschweilera coriacea</i>	Eschweilera coriacea L938	NY	X. Cornejo 8099	Ecuador, Orellana, Yasuni National Park, Saino trail, near the huge Ceiba pentandra	Parvifolia	SAMN15447195	SRR12246951	SRR13514526	4,003,541	343
L954	EscoL954	<i>Eschweilera coriacea</i>	Eschweilera coriacea L954	NY	S. A. Mori 25420A	French Guiana, Nouragues Field Station and vicinity. Between Camp Inselberg and Saut Pararé. ...	Parvifolia	SAMN15447196	SRR12246950	SRR13514525	3,712,482	343
L770	EscoL770	<i>Eschweilera coriacea</i>	Eschweilera coriacea L770	PDBFF	D. A. Larson 2	Brazil, Amazonas, Rio Preto da Eva	Parvifolia	SAMN15447190	SRR12246986	SRR13514561	4,642,711	343
L771	EscoL771	<i>Eschweilera coriacea</i>	Eschweilera coriacea L771	PDBFF	D. A. Larson 3	Brazil, Amazonas, Rio Preto da Eva	Parvifolia	SAMN15447191	SRR12246975	SRR13514550	3,263,891	343
L780	EscoL780	<i>Eschweilera coriacea</i>	Eschweilera coriacea L780	PDBFF	D. A. Larson 12	Brazil, Amazonas, Rio Preto da Eva	Parvifolia	SAMN15447192	SRR12246964	SRR13514539	1,895,173	339
L796	EscoL796	<i>Eschweilera coriacea</i>	Eschweilera coriacea × wachenheimii L796	PDBFF	D. A. Larson 28	Brazil, Amazonas, Rio Preto da Eva	Parvifolia	SAMN15447197	SRR12246949	SRR13514524	1,995,897	343
L824	EscoL824	<i>Eschweilera coriacea</i>	Eschweilera coriacea × wachenheimii L824	PDBFF	D. A. Larson 57	Brazil, Amazonas, Rio Preto da Eva	Parvifolia	SAMN15447198	SRR12246948	SRR13514523	1,059,441	343
L834	EscoL834	<i>Eschweilera coriacea</i>	Eschweilera coriacea L834	PDBFF	D. A. Larson 67	Brazil, Amazonas, Rio Preto da Eva	Parvifolia	SAMN15447193	SRR12246953	SRR13514528	4,214,139	343
L781	EsspL781	<i>Eschweilera coriacea</i>	Eschweilera coriacea L781	PDBFF	D. A. Larson 13	Brazil, Amazonas, Rio Preto da Eva	Parvifolia	SAMN15447199	SRR12246946	SRR13514521	3,710,189	343
L785	EsspL785	<i>Eschweilera coriacea</i>	Eschweilera coriacea L785	PDBFF	D. A. Larson 17	Brazil, Amazonas, Rio Preto da Eva	Parvifolia	SAMN15447200	SRR12246945	SRR13514520	1,976,741	342
L545	EscoL545	<i>Eschweilera coriacea</i>	Eschweilera coriacea L545	UP	J. E. Batista G. 1384	Panama	Parvifolia	SAMN15447189	SRR12246997	SRR13514572	856,170	343
L535	EscoL535	<i>Eschweilera coriacea</i>	Eschweilera coriacea L535	UP	J. E. Batista G. 1429	Panama, Santa Fe	Parvifolia	SAMN15447265	SRR12246874	SRR13514449	2,030,848	343
L797	EscoL797	<i>Eschweilera cyathiformis</i>	Eschweilera cyathiformis L797	PDBFF	D. A. Larson 29	Brazil, Amazonas, Rio Preto da Eva	Parvifolia	SAMN15447201	SRR12246944	SRR13514519	3,394,154	335
L813	EscoL813	<i>Eschweilera cyathiformis</i>	Eschweilera cyathiformis L813	PDBFF	D. A. Larson 46	Brazil, Amazonas, Rio Preto da Eva	Parvifolia	SAMN15447202	SRR12246943	SRR13514518	4,862,425	343
L653	LechL653	<i>Eschweilera cyathiformis</i>	Eschweilera cyathiformis L653	PDBFF	C. Chiva 968	Brazil, Amazonas, Manaus	Parvifolia	SAMN15447205	SRR12246940	SRR13514515	2,727,880	343
L070	EsdoL070	<i>Eschweilera decolorans</i>	Eschweilera decolorans L070	NY	S. A. Mori 25451	French Guiana	Parvifolia	SAMN15447206	SRR12246939	SRR13514514	3,267,251	343
L543	EsdoL543	<i>Eschweilera donosoensis</i>	Eschweilera donosoensis L543	UP	J. E. Batista G. 1368	Panama	Parvifolia	SAMN15447266	SRR12246873	SRR13514448	5,010,032	343
L066	EsgrL066	<i>Eschweilera grandiflora</i>	Eschweilera grandiflora L066	NY	S. A. Mori 25435	French Guiana	Parvifolia	SAMN15447207	SRR12246938	SRR13514513	4,175,351	343
L040	EsjuL040	<i>Eschweilera juruensis</i>	Eschweilera juruensis L040	NY	D. C. Daly 10998	Brazil	Parvifolia	SAMN15447267	SRR12246872	SRR13514447	4,840,529	343
L013	EsloL013	<i>Eschweilera laevicarpa</i>	Eschweilera laevicarpa L013	NY	S. A. Mori 24314	French Guiana	Parvifolia	SAMN15447208	SRR12246937	SRR13514512	1,904,210	343
L814	EsloL814	<i>Eschweilera laevicarpa</i>	Eschweilera laevicarpa L814	PDBFF	D. A. Larson 47	Brazil, Amazonas, Rio Preto da Eva	Parvifolia	SAMN15447212	SRR12246932	SRR13514507	3,231,240	343
L756	EsspL756	<i>Eschweilera laevicarpa</i>	Eschweilera laevicarpa L756	PDBFF	Equipe PP 64709	Brazil, Amazonas, Manaus	Parvifolia	SAMN15447214	SRR12246930	SRR13514505	3,912,794	343
L821	EsmiL821	<i>Eschweilera micrantha</i>	Eschweilera micrantha L821	PDBFF	D. A. Larson 54	Brazil, Amazonas, Rio Preto da Eva	Parvifolia	SAMN15447215	SRR12246929	SRR13514504	5,665,912	341
L015	EsovL015	<i>Eschweilera ovata</i>	Eschweilera ovata L015	NY	W. Thomas 11060	French Guiana	Parvifolia	SAMN15447217	SRR12246927	SRR13514502	4,823,784	343
L068	EspaL068	<i>Eschweilera parviflora</i>	Eschweilera parviflora L068	NY	S. A. Mori 25437	French Guiana	Parvifolia	SAMN15447218	SRR12246926	SRR13514501	4,334,087	343
L882	EstrL882	<i>Eschweilera parviflora</i>	Eschweilera parviflora × wachenheimii L882	PPBIO-INPA	P. F. Souza 321	Brazil, Amazonas, BR319	Parvifolia	SAMN15447219	SRR12246924	SRR13514499	2,748,545	343
L891	EstrL891	<i>Eschweilera parviflora</i>	Eschweilera parviflora × wachenheimii L891	PPBIO-INPA	P. F. Souza 1113	Brazil, Amazonas, BR319	Parvifolia	SAMN15447220	SRR12246923	SRR13514498	2,156,552	334
L332	EsmiL332	<i>Eschweilera parvifolia</i>	Eschweilera parvifolia L332	NY	S. A. Mori 25652	French Guiana	Parvifolia	SAMN15447223	SRR12246920	SRR13514495	3,858,288	343
L386	EspaL386	<i>Eschweilera parvifolia</i>	Eschweilera parvifolia L386	NY	M. F. Simon 2397	Brazil, Mato Grosso	Parvifolia	SAMN15447221	SRR12246922	SRR13514497	3,750,194	343
L936	Estel936	<i>Eschweilera parvifolia</i>	Eschweilera parvifolia L936	NY	X. Cornejo 8102	Ecuador, Orellana, Yasuni National Park, Garza trail,	Parvifolia	SAMN15447224	SRR12246919	SRR13514494	1,798,914	343
L868	EspaL868	<i>Eschweilera parvifolia</i>	Eschweilera parvifolia L868	PDBFF	B. G. Luize 526	Brazil, Amazonas, Uarini	Parvifolia	SAMN15447222	SRR12246921	SRR13514496	2,959,796	340
L017	EspeL017	<i>Eschweilera pedicellata</i>	Eschweilera pedicellata L017	NY	S. A. Mori 24085	French Guiana	Parvifolia	SAMN15447225	SRR12246918	SRR13514493	4,167,615	343
L812	EspeL812	<i>Eschweilera pedicellata</i>	Eschweilera pedicellata L812	PDBFF	D. A. Larson 45	Brazil, Amazonas, Rio Preto da Eva	Parvifolia	SAMN15447228	SRR12246915	SRR13514490	4,218,390	337
LA07	EspiL07	<i>Eschweilera pittieri</i>	Eschweilera pittieri LA07	NY	X. Cornejo 8208	Colombia	Parvifolia	SAMN15447269	SRR12246870	SRR13514626	3,072,830	343
L529	EspiL529	<i>Eschweilera pittieri</i>	Eschweilera pittieri L529	UP	J. E. Batista G. 1562	Panama, Cerro Hoya	Parvifolia	SAMN15447268	SRR12246871	SRR13514446	2,103,431	343
L715	EspL715	<i>Eschweilera pseudodecolorans</i>	Eschweilera pseudodecolorans L715	PDBFF	C. W. Dick ESPS4157	Brazil, Amazonas, Rio Preto da Eva	Parvifolia	SAMN15447231	SRR12246911	SRR13514486	1,930,824	343
L792	EspL792	<i>Eschweilera pseudodecolorans</i>	Eschweilera pseudodecolorans L792	PDBFF	D. A. Larson 24	Brazil, Amazonas, Rio Preto da Eva	Parvifolia	SAMN15447232	SRR12246910	SRR13514485	2,649,331	339
L805	EsraL805	<i>Eschweilera rankiniae</i>	Eschweilera rankiniae L805	PDBFF	D. A. Larson 38	Brazil, Amazonas, Rio Preto da Eva	Parvifolia	SAMN15447237	SRR12246905	SRR13514480	2,647,539	339
L835	EsraL835	<i>Eschweilera rankiniae</i>	Eschweilera rankiniae L835	PDBFF	D. A. Larson 68	Brazil, Amazonas, Rio Preto da Eva	Parvifolia	SAMN15447240	SRR12246901	SRR13514476	2,161,956	339
L578	EsrhL578	<i>Eschweilera rhododendrifolia</i>	Eschweilera rhododendrifolia L578	PDBFF	R. V. de Almeida 1414	Brazil, Amazonas, Manaus	Parvifolia	SAMN15447241	SRR12246900	SRR13514475	2,685,303	342
L664	EsroL664	<i>Eschweilera romeu</i>	Eschweilera romeu-cardosoi L664	PDBFF	C. W. Dick 302-2017	Brazil, Amazonas, Rio Preto da Eva	Parvifolia	SAMN15447242	SRR12246899	SRR13514474	2,996,804	343
L940	EsruL940	<i>Eschweilera ruffifolia</i>	Eschweilera ruffifolia L940	NY	X. Cornejo 8094	Ecuador, Orellana, Yasuni National Park, 50 ha. Plots	Parvifolia	SAMN15447271	SRR12246868	SRR13514624	1,704,330	341
L335	EssaL335	<i>Eschweilera sagotiana</i>	Eschweilera sagotiana L335	NY	S. A. Mori 25712	French Guiana	Parvifolia	SAMN15447244	SRR12246897	SRR13514472	2,529,631	343
L271	EswaL271	<i>Eschweilera sagotiana</i>	Eschweilera sagotiana L271	NY	S. A. Mori 25591	French Guiana	Parvifolia	SAMN15447246	SRR12246895	SRR13514470	3,434,516	340
L302	Estel302	<i>Eschweilera sp</i>	Eschweilera sp L302	NY	S. A. Mori 25642	Peru	Parvifolia	SAMN15447275	SRR12246864	SRR13514620	1,169,053	332
L539	EsroL539	<i>Eschweilera sp</i>	Eschweilera sp L539	UP	J. E. Batista G. 1699	Panama, Codé	Parvifolia	SAMN15447270	SRR12246869	SRR13514625	2,979,127	343
L532	EsspL532	<i>Eschweilera sp</i>	Eschweilera sp nov L532	UP	J. E. Batista G. 1557	Panama, Donoso, Colon	Parvifolia	SAMN15447273	SRR12246866	SRR13514622	3,509,766	343
L533	EsspL533	<i>Eschweilera sp</i>	Eschweilera sp nov L533	UP	J. E. Batista G. 1552	Panama, Donoso, Colon	Parvifolia	SAMN15447274	SRR12246865	SRR13514621	3,894,608	343
L020	EssuL020	<i>Eschweilera subglandulosa</i>	Eschweilera subglandulosa L020	NY	S. A. Mori 24380	French Guiana	Parvifolia	SAMN15447272	SRR12246867	SRR13514623	2,738,138	343
L704	Estel704	<i>Eschweilera tessmannii</i>	Eschweilera tessmannii L704	PDBFF	C. W. Dick ESTE2736	Brazil, Amazonas, Rio Preto da Eva	Parvifolia	SAMN15447247	SRR12246894	SRR13514469	4,074,492	335
L733	EsbrL733	<i>Eschweilera truncata</i>	Eschweilera truncata L733	PDBFF	C. W. Dick ESRB965	Brazil, Amazonas, Rio Preto da Eva	Parvifolia	SAMN15447255	SRR12246885	SRR13514460	5,424,343	343
L620	EsroL620	<i>Eschweilera truncata</i>	Eschweilera truncata L620	PDBFF	P. Campos 1367	Brazil, Amazonas, Manaus	Parvifolia	SAMN15447248	SRR12246893	SRR13514468	3,833,396	343
L690	Estel690	<i>Eschweilera truncata</i>	Eschweilera truncata L690	PDBFF	C. W. Dick ESTE1917	Brazil, Amazonas, Rio Preto da Eva	Parvifolia	SAMN15447256	SRR12246884	SRR13514459	3,912,979	343
L772	EstrL772	<i>Eschweilera truncata</i>	Eschweilera truncata L772	PDBFF	D. A. Larson 4	Brazil, Amazonas, Rio Preto da Eva	Parvifolia	SAMN15447251	SRR12246889	SRR13514464	2,839,397	334
L793	EstrL793	<i>Eschweilera truncata</i>	Eschweilera truncata L793	PDBFF	D. A. Larson 25	Brazil, Amazonas, Rio Preto da Eva	Parvifolia	SAMN15447252	SRR12246888	SRR13514463	4,516,234	343
L779	EswaL779	<i>Eschweilera wachenheimii</i>	Eschweilera wachenheimii L779	PDBFF	D. A. Larson 11	Brazil, Amazonas, Rio Preto da Eva	Parvifolia	SAMN15447260	SRR12246879	SRR13514454	3,065,994	343
L832	EswaL832	<i>Eschweilera wachenheimii</i>	Eschweilera wachenheimii L832	PDBFF	D. A. Larson 65	Brazil, Amazonas, Rio Preto da Eva	Parvifolia	SAMN15447261	SRR12246878	SRR13514453	6,022,814	343
L368	FomaL368	<i>Foetidia mauritiana</i>	Foetidia mauritiana L368	NY	T. J. Motley 2898	Cultivated	Foetidia	SAMN15447329	SRR12247044	SRR13514404	2,106,349	324
LA10	GranLA10	<i>Grias angustipetala</i>	Grias angustipetala LA10	NY	X. Cornejo 8225	Ecuador	Grias	SAMN15447330	SRR12247043	SRR13514403	3,120,543	342
L308	GreaL308	<i>Grias cauliflora</i>	Grias cauliflora L308	NY	R. Aguilar 7961	Costa Rica	Grias	SAMN15447331	SRR12247042	SRR13514402	7,961,728	343
LA04	GrecLA04	<i>Grias ecuadorica</i>	Grias ecuadorica LA04	NY	X. Cornejo 8187	Ecuador	Grias	SAMN15447332	SRR12247041	SRR13514401	5,019,448	343
L934	GrloL934	<i>Grias longirachis</i>	Grias longirachis L934	NY	X. Cornejo 8161	Ecuador, Esmeraldas, Bilsa Biological Station, Sendero Verde,	Grias	SAMN15447333	SRR12247040	SRR13514400	3,153,489	343
L338	GrmuL338	<i>Grias multinervia</i>	Grias multinervia L338	NY	J. K. Clark 7103	Ecuador	Grias	SAMN15447334	SRR12247039	SRR13514399	2,829,731	342
L929	GrneL929	<i>Grias neuberthii</i>	Grias neuberthii L929	NY	X. Cornejo 8104	Ecuador, Orellana, Joya de los Sachas, in yard of house located on Fundadores Av.	Grias	SAMN15447335	SRR12247035	SRR13514398	2,863,102	335
LA08	GrpeLA08	<i>Grias peruviana</i>	Grias peruviana LA08	NY	X. Cornejo 8220	Ecuador	Grias	SAMN15447336	SRR12247034	SRR13514397	2,646,245	335
L944	GrsuL944	<i>Grias subullata</i>	Grias subullata L944	NY	X. Cornejo 8084	Ecuador, Santo Domingo de los Tsáchilas, Otongachi,	Grias	SAMN15447338	SRR12247032	SRR13514395	2,471,881	340
L933	GrthL933	<i>Grias theobromicarpa</i>	Grias theobromicarpa L933	NY	X. Cornejo 8083	Ecuador, Pichincha, Sr. Romero private property adjacent to Santa Lucia Reserve, along the trail fro...	Grias	SAMN15447339	SRR12247030	SRR13514393	1,210,762	330
L939	GuanL939	<i>Gustavia angustifolia</i>	Gustavia angustifolia L939	NY	X. Cornejo 8105	Ecuador, Manabi, Pedernales, 6 km N on road to El Carmen, roadside,	Gustavia	SAMN15447340	SRR12247029	SRR13514392	1,690,307	335
L291	GuauL291	<i>Gustavia augusta</i>	Gustavia augusta L291	NY	J. Janovec 2507	Peru	Gustavia	SAMN15447341	SRR12247028	SRR13514391	1,456,708	329
L953	GuauL953	<i>Gustavia augusta</i>	Gustavia augusta L953	NY	S. A. Mori 25636	Peru, Madre de Dios, Los Amigos field station, on the Madre de Dios River near mouth of the Los Amigo...	Gustavia	SAMN15447343	SRR12247026	SRR13514601	3,929,085	343
L955	GuauL955	<i>Gustavia augusta</i>	Gustavia augusta L955	NY	S. A. Mori 24255	French Guiana, Cayenne. Within 1 kilometer of the "Herbier de Cayenne". Cultivated on grounds...	Gustavia	SAMN15447344	SRR12247025	SRR13514600	3,469,023	343
L840	GuauL840	<i>Gustavia augusta</i>	Gustavia augusta L840	PDBFF	B. G. Luize 472	Brazil, Amazonas, Beruri	Gustavia	SAMN15447342	SRR12247027	SRR13514390	4,437,163	343
L362	GubrL362	<i>Gustavia brachycarpa</i>	Gustavia brachycarpa L362	NY	R. Aguilar 8451	Costa Rica	Gustavia	SAMN15447345	SRR12247024	SRR13514599	2,095,534	333
L949	GuduL949	<i>Gustavia dubia</i>	Gustavia dubia L949	NY	X. Cornejo 8247	Ecuador, Esmeraldas, Reserva Ecológica Manglares Cayapas Mataje (REMACAM), Caraña,	Gustavia	SAMN15447346	SRR12247023	SRR13514598	4,293,143	343
L784	GuellL784	<i>Gustavia elliptica</i>	Gustavia elliptica L784	PDBFF	D. A. Larson 16	Brazil, Amazonas, Rio Preto da Eva	Gustavia	SAMN15447347	SRR12247022	SRR13514597	2,606,504	343
L935	GugrL935	<i>Gustavia gracieae</i>	Gustavia gracieae L935	NY	X. Cornejo 8							

L950	GuhuL950	<i>Gustavia hubbardiorum</i>	Gustavia hubbardiorum L950	NY	X. Cornejo 8061	Ecuador, Napo, From Tena to Jatun Sacha before Ishpingo Botanical Garden, near Jatun Sacha Biol...	Gustavia	SAMN15447351	SRR12247017	SRR13514592	3,072,382	343
L945	Gujol945	<i>Gustavia johncarkii</i>	Gustavia johncarkii L945	NY	X. Cornejo 8174	Ecuador, Esmeraldas, Bilsa Biological Station, secondary road to Dogola, in front of Sendero Amarillo...	Gustavia	SAMN15447352	SRR12247016	SRR13514591	2,999,379	343
L931	GuloL931	<i>Gustavia longifolia</i>	Gustavia longifolia L931	NY	X. Cornejo 8098	Ecuador, Orellana, Yasuni National Park, Ceiba trail,	Gustavia	SAMN15447354	SRR12247014	SRR13514589	3,135,174	332
L948	GuloL948	<i>Gustavia longifolia</i>	Gustavia longifolia L948	NY	X. Cornejo 8092	Ecuador, Orellana, Yasuni National Park, Chorongongo trail, on km 6,	Gustavia	SAMN15447355	SRR12247013	SRR13514588	5,541,482	343
L904	GuloL904	<i>Gustavia longifolia</i>	Gustavia longifolia L904	PDBFF	M. H. Terra-Araujo 225	Brazil, Amazonas, São Gabriel da Cachoeira	Gustavia	SAMN15447353	SRR12247015	SRR13514590	3,735,575	343
L046	GumaL046	<i>Gustavia macarenensis</i>	Gustavia macarenensis L046	NY	J. L. Clark 6508	French Guiana	Gustavia	SAMN15447403	SRR12246959	SRR13514534	2,391,151	330
F017	GumoF017	<i>Gustavia monocaulis</i>	Gustavia monocaulis F017	Fairchild Tropical Botanic Garden	T. M. Perez s.n.	Cultivated. Fairchild Tropical Botanic Garden	Gustavia	SAMN15447356	SRR12247012	SRR13514587	5,372,445	343
L544	GunaL544	<i>Gustavia nana</i>	Gustavia nana L544	UP	J. E. Batista G. 1672	Panama	Gustavia	SAMN15447357	SRR12247011	SRR13514586	4,243,412	343
L937	GupeL937	<i>Gustavia petiolata</i>	Gustavia petiolata L937	NY	X. Cornejo 8242	Ecuador, Esmeraldas, Reserva Ecológica Manglares Cayapas Mataje (REMACAM), Caraño,	Gustavia	SAMN15447358	SRR12247010	SRR13514585	2,321,323	343
L869	GupoL869	<i>Gustavia poeppigiana</i>	Gustavia poeppigiana L869	PDBFF	B. G. Luize 536	Brazil, Amazonas, Uarini	Gustavia	SAMN15447359	SRR12247008	SRR13514583	2,374,610	342
LA06	GupuLA06	<i>Gustavia pubescens</i>	Gustavia pubescens LA06	NY	X. Cornejo 8192	Ecuador	Gustavia	SAMN15447360	SRR12247007	SRR13514582	2,963,270	336
LA02	GuseLA02	<i>Gustavia serrata</i>	Gustavia serrata LA02	NY	X. Cornejo 8184	Ecuador	Gustavia	SAMN15447361	SRR12247006	SRR13514581	4,904,300	331
L237	GuspL237	<i>Gustavia speciosa</i>	Gustavia speciosa L237	NY	B. Stahl 5902	Ecuador	Gustavia	SAMN15447362	SRR12247005	SRR13514580	3,695,931	343
L266	GusuL266	<i>Gustavia superba</i>	Gustavia superba L266	NY	C. Galdames 5179	Panama	Gustavia	SAMN15447363	SRR12247004	SRR13514579	4,354,523	340
L026	LecoL026	<i>Guaiana confertiflora</i>	Guaiana confertiflora L026	NY	S. A. Mori 24320	French Guiana	Corrugata	SAMN15447367	SRR12247000	SRR13514575	3,765,157	343
L029	LecoL029	<i>Guaiana corrugata</i>	Guaiana corrugata L029	NY	S. A. Mori 24265	French Guiana	Corrugata	SAMN15447368	SRR12246999	SRR13514574	2,015,577	338
L089	LeidL089	<i>Guaiana idatimon</i>	Guaiana idatimon L089	NY	M.-F. Prévost 4259	French Guiana	Corrugata	SAMN15447371	SRR12246994	SRR13514569	4,907,135	340
L080	LepeL080	<i>Guaiana persistens</i>	Guaiana persistens L080	NY	S. A. Mori 25482	French Guiana	Corrugata	SAMN15447378	SRR12246987	SRR13514562	3,974,221	343
L320	LepnL320	<i>Guaiana pneumatophora</i>	Guaiana pneumatophora L320	NY	S. A. Mori 25728	French Guiana	Corrugata	SAMN15447382	SRR12246982	SRR13514557	2,453,586	343
L409	EsapL409	<i>Guaiana sp</i>	Guaiana sp L409	RB	H. S. Pimentel 05	Brazil, Pará	Corrugata	SAMN15447396	SRR12246967	SRR13514542	3,597,524	343
L382	EsalL382	<i>Imbiriba alvimii</i>	Imbiriba alvimii L382	NY	R. P. Belium 2858	Brazil, Bahia	Tetrapetala	SAMN15447311	SRR12246824	SRR13514424	1,704,946	342
L384	EscoL384	<i>Imbiriba compressa</i>	Imbiriba compressa L384	RB	M. Ribeiro 1157	Brazil, Espírito Santo	Tetrapetala	SAMN15447317	SRR12247058	SRR13514418	2,549,313	341
L379	EsmaL379	<i>Imbiriba mattos</i>	Imbiriba mattos-silvae L379	RB	M. Ribeiro 1330B	Brazil, Bahia	Tetrapetala	SAMN15447320	SRR12247054	SRR13514414	2,393,924	333
L381	EsnaL381	<i>Imbiriba nana</i>	Imbiriba nana L381	RFA	R. T. Valadares 1452	Brazil, Bahia	Tetrapetala	SAMN15447321	SRR12247053	SRR13514413	3,259,111	340
L394	EsimL394	<i>Imbiriba sp</i>	Imbiriba sp nov L394	NY	W. Thomas 10300	Brazil, Bahia	Tetrapetala	SAMN15447319	SRR12247055	SRR13514415	5,765,588	343
L388	EsspL388	<i>Imbiriba sphaerocarpa</i>	Imbiriba sphaerocarpa L388	RB	M. Ribeiro 943	Brazil, Espírito Santo	Tetrapetala	SAMN15447325	SRR12247049	SRR13514409	4,033,543	343
L380	Estel380	<i>Imbiriba tetrapetala</i>	Imbiriba tetrapetala L380	NY	Armorim 3060	Brazil, Bahia	Tetrapetala	SAMN15447328	SRR12247046	SRR13514406	3,065,427	336
L274	Lemil274	<i>Lecythis minor</i>	Lecythis minor L274	NY	T. J. Motley 2895	Cultivated	Ollaria	SAMN15447376	SRR12246989	SRR13514564	3,279,313	334
F033	NaimF033	<i>Napoleonaea imperialis</i>	Napoleonaea imperialis F033	Fairchild Tropical Botanic Garden	T. M. Perez s.n.	Cultivated. Fairchild Tropical Botanic Garden	Napoleonaea	SAMN15447392	SRR12246971	SRR13514546	792,809	272
L257	NavoL257	<i>Napoleonaea vogelii</i>	Napoleonaea vogelii L257	NY	D. Frame s.n.	Gabon, Makokon	Napoleonaea	SAMN15447393	SRR12246970	SRR13514545	2,147,615	274
L313	LeamL313	<i>Pachylecythis ampla</i>	Pachylecythis ampla L313	NY	R. Aguilar 7975	Costa Rica	Pisonis	SAMN15447365	SRR12247002	SRR13514577	4,302,236	343
L516	LelaL516	<i>Pachylecythis lanceolata</i>	Pachylecythis lanceolata L516	RB	M. Ribeiro 909	Brazil, Espírito Santo	Pisonis	SAMN15447372	SRR12246993	SRR13514568	3,850,949	338
L450	LemaL450	<i>Pachylecythis maragraaviana</i>	Pachylecythis maragraaviana L450	RB	M. Ribeiro 1332	Brazil, Bahia	Pisonis	SAMN15447374	SRR12246991	SRR13514566	2,174,337	343
L966	Lepil966	<i>Pachylecythis pisonis</i>	Pachylecythis pisonis L966	NY	S. A. Mori 27296	Brazil, Amazonas, Paranó do Limão, Comunidade de Nossa Senhora da Nazaré.	Pisonis	SAMN15447381	SRR12246983	SRR13514558	3,582,698	343
L668	Lepil668	<i>Pachylecythis pisonis</i>	Pachylecythis pisonis L668	PDBFF	C. W. Dick LEPI1015	Brazil, Amazonas, Rio Preto da Eva	Pisonis	SAMN15447379	SRR12246985	SRR13514560	1,980,846	331
L769	Lepil769	<i>Pachylecythis pisonis</i>	Pachylecythis pisonis L769	PDBFF	D. A. Larson 1	Brazil, Amazonas, Rio Preto da Eva	Pisonis	SAMN15447380	SRR12246984	SRR13514559	2,458,888	331
L776	Camil776	<i>Pachylecythis sp</i>	Pachylecythis sp L776	PDBFF	D. A. Larson 8	Brazil, Amazonas, Rio Preto da Eva	Pisonis	SAMN15447395	SRR12246968	SRR13514543	2,481,334	340
L683	LebrL683	<i>Pachylecythis sp</i>	Pachylecythis sp L683	PDBFF	C. W. Dick ESBRI390	Brazil, Amazonas, Rio Preto da Eva	Pisonis	SAMN15447404	SRR12246958	SRR13514533	2,018,620	328
L298	LezaL298	<i>Pachylecythis zabucajo</i>	Pachylecythis zabucajo L298	NY	M.-F. Prévost 4750	French Guiana	Pisonis	SAMN15447390	SRR12246973	SRR13514548	2,980,690	343
L870	LezaL870	<i>Pachylecythis zabucajo</i>	Pachylecythis zabucajo L870	PDBFF	B. G. Luize 547	Brazil, Amazonas, Uarini	Pisonis	SAMN15447391	SRR12246972	SRR13514547	3,051,413	341
L048	EsagL048	<i>Scottmorla aguilarii</i>	Scottmorla aguilarii L048	NY	R. Aguilar 6521	French Guiana	Integrifolia	SAMN15447310	SRR12246825	SRR13514425	2,531,886	332
L943	EsawL943	<i>Scottmorla awaensis</i>	Scottmorla awaensis L943	NY	X. Cornejo 8171	Ecuador, Esmeraldas, Bilsa Biological Station, Sendero Verde,	Integrifolia	SAMN15447314	SRR12247061	SRR13514421	1,405,474	342
LA03	EscaLA03	<i>Scottmorla caudiculata</i>	Scottmorla caudiculata LA03	NY	X. Cornejo 8185	Ecuador	Integrifolia	SAMN15447315	SRR12247060	SRR13514420	2,606,286	337
L926	GrpuL926	<i>Scottmorla caudiculata</i>	Scottmorla caudiculata L926	NY	S. Angel 298	Colombia, Nariño, Municipio de Barbacoas, Vereda El Barro, Corregimiento de Altaquer, Reserva Río	Integrifolia	SAMN15447337	SRR12247033	SRR13514396	1,660,922	334
L314	EscoL314	<i>Scottmorla collinsii</i>	Scottmorla collinsii L314	NY	R. Aguilar 7966	Costa Rica	Integrifolia	SAMN15447316	SRR12247059	SRR13514419	3,661,523	341
L530	EshoL530	<i>Scottmorla hondurensis</i>	Scottmorla hondurensis L530	UP	J. E. Batista G. 1559	Panama, Cerro Hoya	Integrifolia	SAMN15447318	SRR12247057	SRR13514417	1,166,436	327
LA01	EsinLA01	<i>Scottmorla integrifolia</i>	Scottmorla integrifolia LA01	NY	X. Cornejo 8211	Ecuador	Integrifolia	SAMN15447399	SRR12246963	SRR13514538	2,718,415	343
L845	EsolL845	<i>Scottmorla ovalifolia</i>	Scottmorla ovalifolia L845	PDBFF	B. G. Luize 489	Brazil, Amazonas, Beruri	Integrifolia	SAMN15447322	SRR12247052	SRR13514412	5,124,768	343
L236	EsriL236	<i>Scottmorla rimbachii</i>	Scottmorla rimbachii L236	NY	B. Stahl 5930	Ecuador	Integrifolia	SAMN15447323	SRR12247051	SRR13514411	3,487,076	343
L546	EscoL546	<i>Scottmorla roseocalyx</i>	Scottmorla roseocalyx L546	UP	J. E. Batista G. 1681	Panama	Integrifolia	SAMN15447398	SRR12246965	SRR13514540	2,543,538	331
L551	EspiL551	<i>Scottmorla rotundicarpa</i>	Scottmorla rotundicarpa L551	UP	J. E. Batista G. 1268	Panama, Donoso, Colon	Integrifolia	SAMN15447400	SRR12246962	SRR13514537	4,358,516	343
L345	EsseL345	<i>Scottmorla sessilis</i>	Scottmorla sessilis L345	NY	J. Homeier 1263	Ecuador	Integrifolia	SAMN15447324	SRR12247050	SRR13514410	2,336,633	339
L925	EsspL925	<i>Scottmorla sp</i>	Scottmorla sp nov L925	NY	N. Toribio 78	Panama, Colón, Aproximadamente a 2 km de Isla Galeta,	Integrifolia	SAMN15447326	SRR12247048	SRR13514408	2,382,759	337
L946	EsspL946	<i>Scottmorla sp</i>	Scottmorla sp nov L946	NY	X. Cornejo 8097	Ecuador, Orellana, Yasuni National Park, Ceiba trail, near the disjunction to Peru trail	Integrifolia	SAMN15447327	SRR12247047	SRR13514407	3,900,179	343
L538	EsspL538	<i>Scottmorla sp</i>	Scottmorla sp nov L538	UP	J. E. Batista G. 1422	Panama, Donoso, Colon	Integrifolia	SAMN15447401	SRR12246961	SRR13514536	3,506,176	343
L454	EsamL454	<i>Waimiria amazoniciformis</i>	Waimiria amazoniciformis L454	NY	S. A. Mori 19326	Brazil, Amazonas	Waimiria	SAMN15447312	SRR12246823	SRR13514423	3,799,707	343
L722	EsamL722	<i>Waimiria amazoniciformis</i>	Waimiria amazoniciformis L722	PDBFF	C. W. Dick ESAF7785	Brazil, Amazonas, Rio Preto da Eva	Waimiria	SAMN15447313	SRR12247062	SRR13514422	5,342,915	343

SUPPLEMENTARY TABLE 2. Nuclear regions included in the phylogenetic analysis and their alignment MAFFT method.

Region	TYPE	LENGTH	ALIGNMENT METHOD
AT3G59420	exons	3444	linsi
AT3G59420	introns	979	linsi
AT2G16860	exons	967	linsi
AT2G16860	introns	2006	linsi
AT5G14600	exons	1012	linsi
AT5G14600	introns	2304	linsi
AT4G02820	exons	1268	linsi
AT4G02820	introns	2603	linsi
AT1G57770	exons	1995	linsi
AT1G57770	introns	6062	linsi
AT5G17790	exons	2763	linsi
AT5G17790	introns	1897	linsi
AT5G49800	exons	822	linsi
AT5G49800	introns	1165	linsi
AT1G07040	exons	1373	linsi
AT1G07040	introns	4290	linsi
AT4G29830	exons	447	linsi
AT4G29830	introns	428	linsi
AT2G44020	exons	1875	linsi
AT2G44020	introns	680	linsi
AT5G20910	exons	974	linsi
AT5G20910	introns	1956	linsi
AT5G04480	exons	2820	linsi
AT5G04480	introns	4865	linsi
AT5G46580	exons	2714	linsi
AT5G46580	introns	1239	linsi
AT3G10420	exons	1318	linsi
AT3G10420	introns	3357	linsi
AT5G58480	exons	1491	linsi
AT5G58480	introns	1526	linsi
AT1G18480	exons	1539	linsi
AT1G18480	introns	574	linsi
AT5G55580	exons	1077	linsi
AT5G55580	introns	3042	linsi
AT2G38060	exons	1258	linsi
AT2G38060	introns	2321	linsi
AT2G13840	exons	1401	linsi
AT2G13840	introns	2769	linsi
AT5G13030	exons	2270	linsi
AT5G13030	introns	3442	linsi
AT2G36990	exons	2052	linsi
AT2G36990	introns	2230	linsi
AT3G08760	exons	894	linsi
AT3G08760	introns	2997	linsi
AT5G19540	exons	1866	linsi
AT5G19540	introns	2383	linsi
AT3G14910	exons	1737	linsi
AT3G14910	introns	6322	linsi
AT4G33945	exons	1722	linsi
AT4G33945	introns	3721	linsi
AT3G04880	exons	1028	linsi
AT3G04880	introns	987	linsi
AT3G58470	exons	396	linsi
AT3G58470	introns	115	linsi
AT3G02760	exons	1365	linsi
AT3G02760	introns	3221	fftinsi
AT1G25360	exons	3054	linsi
AT1G25360	introns	34	fftinsi
AT3G17470	exons	2036	linsi
AT3G17470	introns	2150	linsi
AT2G22870	exons	854	linsi
AT2G22870	introns	2168	linsi
AT3G21540	exons	2901	linsi
AT3G21540	introns	5917	fftinsi
AT2G18710	exons	2038	linsi
AT2G18710	introns	5622	linsi
AT1G43580	exons	1236	linsi
AT1G43580	introns	1531	fftinsi
AT3G10150	exons	1304	linsi
AT3G10150	introns	5745	linsi
AT1G16180	exons	959	linsi
AT1G16180	introns	2935	linsi
AT2G47680	exons	3546	linsi
AT2G47680	introns	10267	fftinsi
AT1G30360	exons	2664	linsi
AT1G30360	introns	4301	linsi
AT3G49170	exons	2607	linsi
AT3G49170	introns	869	linsi
AT3G14075	exons	2526	linsi
AT3G14075	introns	5802	linsi
AT1G44350	exons	1680	linsi

AT1G44350	introns	2422	linsi
AT2G26700	exons	1584	linsi
AT2G26700	introns	1473	linsi
AT4G15850	exons	1395	linsi
AT4G15850	introns	8792	linsi
AT5G37830	exons	4987	linsi
AT5G37830	introns	979	linsi
AT1G71240	exons	2479	linsi
AT1G71240	introns	7573	linsi
AT3G47390	exons	2279	linsi
AT3G47390	introns	5253	linsi
AT1G60770	exons	246	linsi
AT1G60770	introns	570	linsi
AT3G53700	exons	1899	linsi
AT3G53700	introns	1173	linsi
AT3G48460	exons	1275	linsi
AT3G48460	introns	3035	linsi
AT2G37230	exons	2060	linsi
AT2G37230	introns	2029	linsi
AT4G38890	exons	1900	linsi
AT4G38890	introns	2534	linsi
AT1G09680	exons	2306	linsi
AT1G09680	introns	1610	linsi
AT5G06680	exons	3323	linsi
AT5G06680	introns	812	linsi
AT3G01480	exons	1698	linsi
AT3G01480	introns	3521	linsi
AT4G08810	exons	2205	linsi
AT4G08810	introns	692	linsi
AT2G39000	exons	984	linsi
AT2G39000	introns	1771	linsi
AT5G63200	exons	2334	linsi
AT5G63200	introns	9283	linsi
AT3G09650	exons	2535	linsi
AT3G09650	introns	798	linsi
AT5G13680	exons	264	linsi
AT5G13680	introns	707	linsi
AT1G11780	exons	1433	linsi
AT1G11780	introns	3619	linsi
AT1G03000	exons	3201	linsi
AT1G03000	introns	4446	fftinsi
AT5G64250	exons	1322	linsi
AT5G64250	introns	4420	linsi
AT4G39010	exons	1876	linsi
AT4G39010	introns	3639	linsi
AT5G54910	exons	2963	linsi
AT5G54910	introns	3230	linsi
AT5G19660	exons	2137	linsi
AT5G19660	introns	5092	linsi
AT3G24190	exons	2659	linsi
AT3G24190	introns	9085	linsi
AT1G54780	exons	518	linsi
AT1G54780	introns	962	linsi
AT5G23060	exons	1353	linsi
AT5G23060	introns	4708	linsi
AT5G51340	exons	2229	linsi
AT5G51340	introns	4839	linsi
AT3G05410	exons	827	linsi
AT3G05410	introns	905	linsi
AT5G06830	exons	894	linsi
AT5G06830	introns	1296	linsi
AT5G03555	exons	1590	linsi
AT5G03555	introns	970	linsi
AT4G39820	exons	1632	linsi
AT4G39820	introns	865	linsi
AT1G05590	exons	1875	linsi
AT1G05590	introns	857	linsi
AT4G38460	exons	1156	linsi
AT4G38460	introns	2928	linsi
AT1G76080	exons	891	linsi
AT1G76080	introns	826	linsi
AT1G78010	exons	1711	linsi
AT1G78010	introns	4565	linsi
AT1G34160	exons	1916	linsi
AT1G34160	introns	622	linsi
AT4G01310	exons	933	linsi
AT4G01310	introns	2715	linsi
AT3G57790	exons	1814	linsi
AT3G57790	introns	1913	linsi
AT4G02405	exons	909	linsi
AT4G02405	introns	333	linsi
AT5G08305	exons	1413	linsi
AT5G08305	introns	1044	linsi
AT2G25620	exons	1410	linsi
AT2G25620	introns	3431	linsi
AT1G34630	exons	1389	linsi
AT1G34630	introns	7984	linsi
AT3G47830	exons	1109	linsi

AT3G47830	introns	4545	linsi
AT5G02820	exons	1112	linsi
AT5G02820	introns	299	linsi
AT4G23930	exons	663	linsi
AT4G23930	introns	823	linsi
AT3G57190	exons	1212	linsi
AT3G57190	introns	4423	linsi
AT1G79190	exons	4465	linsi
AT1G79190	introns	9257	fftinsi
AT1G24610	exons	1893	linsi
AT1G24610	introns	3663	linsi
AT2G25530	exons	2139	linsi
AT2G25530	introns	9182	linsi
AT5G50390	exons	2419	linsi
AT5G50390	introns	431	linsi
AT1G20830	exons	670	linsi
AT1G20830	introns	1716	linsi
AT4G28980	exons	1369	linsi
AT4G28980	introns	1762	linsi
AT5G45900	exons	2163	linsi
AT5G45900	introns	839	linsi
AT5G56900	exons	1782	linsi
AT5G56900	introns	4779	linsi
AT3G05340	exons	1665	linsi
AT3G05340	introns	133	linsi
AT5G24340	exons	1327	linsi
AT5G24340	introns	3393	linsi
AT1G16900	exons	1720	linsi
AT1G16900	introns	3580	linsi
AT3G62390	exons	1581	linsi
AT3G62390	introns	2584	linsi
AT4G38020	exons	900	linsi
AT4G38020	introns	1505	linsi
AT5G02250	exons	2704	linsi
AT5G02250	introns	16547	fftinsi
AT3G61350	exons	1193	linsi
AT3G61350	introns	1983	linsi
AT3G02660	exons	1841	linsi
AT3G02660	introns	540	linsi
AT2G42450	exons	1544	linsi
AT2G42450	introns	6058	linsi
AT1G03750	exons	2686	linsi
AT1G03750	introns	9382	fftinsi
AT4G20740	exons	2379	linsi
AT4G20740	introns	7169	linsi
AT5G10920	exons	868	linsi
AT5G10920	introns	3537	linsi
AT4G19180	exons	561	linsi
AT4G19180	introns	1015	linsi
AT3G52570	exons	884	linsi
AT3G52570	introns	2112	linsi
AT1G23400	exons	920	linsi
AT1G23400	introns	3975	linsi
AT2G35130	exons	1715	linsi
AT2G35130	introns	4340	fftinsi
AT3G09210	exons	606	linsi
AT3G09210	introns	3090	linsi
AT5G66631	exons	2835	linsi
AT5G66631	introns	5774	linsi
AT5G54140	exons	1620	linsi
AT5G54140	introns	3368	linsi
AT2G37560	exons	1002	linsi
AT2G37560	introns	2636	linsi
AT1G11545	exons	1129	linsi
AT1G11545	introns	2058	linsi
AT5G12410	exons	1104	linsi
AT5G12410	introns	6256	linsi
AT1G17160	exons	1276	linsi
AT1G17160	introns	4493	linsi
AT4G12130	exons	1649	linsi
AT4G12130	introns	3107	linsi
AT1G11290	exons	2882	linsi
AT1G11290	introns	3412	linsi
AT1G59600	exons	1327	linsi
AT1G59600	introns	3320	linsi
AT4G01130	exons	1118	linsi
AT4G01130	introns	3310	fftinsi
AT1G07970	exons	2299	linsi
AT1G07970	introns	4321	linsi
AT5G13390	exons	401	linsi
AT5G13390	introns	649	linsi
AT1G75330	exons	1170	linsi
AT1G75330	introns	1317	linsi
AT1G21370	exons	976	linsi
AT1G21370	introns	3035	linsi
AT2G14530	exons	1363	linsi
AT2G14530	introns	3930	linsi
AT2G38000	exons	1952	linsi

AT2G38000	introns	2668	linsi
AT3G19870	exons	3132	linsi
AT3G19870	introns	2321	linsi
AT1G27060	exons	1040	linsi
AT1G27060	introns	3698	linsi
AT1G56230	exons	1848	linsi
AT1G56230	introns	3107	linsi
AT3G26570	exons	2165	linsi
AT3G26570	introns	4120	linsi
AT3G07140	exons	2291	linsi
AT3G07140	introns	3305	linsi
AT5G52810	exons	928	linsi
AT5G52810	introns	55	linsi
AT5G55500	exons	812	linsi
AT5G55500	introns	1558	linsi
AT5G65720	exons	1900	linsi
AT5G65720	introns	1681	linsi
AT3G20420	exons	1019	linsi
AT3G20420	introns	2913	linsi
AT1G05055	exons	983	linsi
AT1G05055	introns	3259	linsi
AT1G73970	exons	2056	linsi
AT1G73970	introns	2026	linsi
AT5G48730	exons	1275	linsi
AT5G48730	introns	1733	linsi
AT5G41330	exons	1290	linsi
AT5G41330	introns	1201	linsi
AT4G39920	exons	1317	linsi
AT4G39920	introns	992	linsi
AT1G62750	exons	713	linsi
AT1G62750	introns	1207	linsi
AT1G55880	exons	1529	linsi
AT1G55880	introns	6059	fftinsi
AT2G03270	exons	1721	linsi
AT2G03270	introns	6200	fftinsi
AT4G15420	exons	2202	linsi
AT4G15420	introns	1331	linsi
AT5G04710	exons	1641	linsi
AT5G04710	introns	9380	fftinsi
AT3G48250	exons	1157</	

AT5G23940	introns	1970	linsi	AT1G04640	introns	1959	linsi	AT5G46800	introns	2156	linsi	AT1G79600	introns	957	linsi
AT4G01870	exons	2315	linsi	AT2G33610	exons	1393	linsi	AT5G42480	exons	2273	linsi	AT5G26850	exons	3633	linsi
AT4G01870	introns	651	fftnsi	AT2G33610	introns	2494	linsi	AT5G42480	introns	3182	linsi	AT5G26850	introns	19650	fftnsi
AT4G17370	exons	1274	linsi	AT5G50230	exons	374	linsi	AT1G21640	exons	4053	linsi	AT4G32605	exons	660	linsi
AT4G17370	introns	2814	linsi	AT5G50230	introns	1492	linsi	AT1G21640	introns	9248	linsi	AT4G32605	introns	1989	linsi
AT4G29120	exons	1412	linsi	AT1G05910	exons	1631	linsi	AT2G44660	exons	1228	linsi	AT3G19553	exons	2075	linsi
AT4G29120	introns	722	fftnsi	AT1G05910	introns	4327	fftnsi	AT2G44660	introns	1233	linsi	AT3G19553	introns	1344	linsi
AT1G74470	exons	1189	linsi	AT1G21480	exons	1636	linsi	AT3G61320	exons	1723	linsi	AT1G01880	exons	2374	linsi
AT1G74470	introns	1489	linsi	AT1G21480	introns	3268	linsi	AT3G61320	introns	3588	linsi	AT1G01880	introns	4965	linsi
AT2G30080	exons	1060	linsi	AT3G58690	exons	1254	linsi	AT2G17020	exons	1864	linsi	AT2G20330	exons	2174	linsi
AT2G30080	introns	1580	linsi	AT3G58690	introns	3579	linsi	AT2G17020	introns	1689	linsi	AT2G20330	introns	8850	linsi
AT2G04740	exons	2129	linsi	AT3G08010	exons	1362	linsi	AT3G55400	exons	1379	linsi	AT1G11090	exons	1135	linsi
AT2G04740	introns	5247	linsi	AT3G08010	introns	3158	linsi	AT3G55400	introns	6677	linsi	AT1G11090	introns	537	linsi
AT3G04260	exons	2785	linsi	AT1G64890	exons	1851	linsi	AT1G71190	exons	769	linsi	AT1G76920	exons	1282	linsi
AT3G04260	introns	9128	linsi	AT1G64890	introns	260	linsi	AT1G71190	introns	5219	linsi	AT1G76920	introns	1390	linsi
AT5G39590	exons	1653	linsi	AT3G21740	exons	945	linsi	AT1G68400	exons	1898	linsi	AT2G40770	exons	5678	linsi
AT5G39590	introns	4252	linsi	AT3G21740	introns	986	linsi	AT1G68400	introns	2044	linsi	AT2G40770	introns	12707	fftnsi
AT1G70330	exons	1662	linsi	AT1G19520	exons	2600	linsi	AT4G16390	exons	2175	linsi	AT1G67410	exons	1251	linsi
AT1G70330	introns	1534	linsi	AT1G19520	introns	3898	linsi	AT4G16390	introns	834	linsi	AT1G67410	introns	1479	linsi
AT3G20015	exons	1651	linsi	AT3G57180	exons	2295	linsi	AT2G15630	exons	2194	linsi	AT1G26460	exons	2385	linsi
AT3G20015	introns	728	linsi	AT3G57180	introns	3045	linsi	AT2G15630	introns	3849	linsi	AT1G26460	introns	5224	linsi
AT1G01180	exons	975	linsi	AT1G20300	exons	1173	linsi	AT3G47610	exons	1249	linsi	AT3G01060	exons	1629	linsi
AT1G01180	introns	2518	linsi	AT1G20300	introns	3815	linsi	AT3G47610	introns	1261	linsi	AT3G01060	introns	4924	linsi
AT3G26580	exons	996	linsi	AT3G59040	exons	1935	linsi	AT1G28680	exons	1398	linsi	AT5G18070	exons	2217	linsi
AT3G26580	introns	1551	linsi	AT3G59040	introns	5085	linsi	AT1G28680	introns	1334	linsi	AT5G18070	introns	3201	fftnsi
AT3G55120	exons	878	linsi	AT5G45380	exons	2595	linsi	AT2G47330	exons	803	linsi	AT4G33410	exons	480	linsi
AT3G55120	introns	2509	linsi	AT5G45380	introns	1758	linsi	AT2G47330	introns	595	linsi	AT4G33410	introns	1347	linsi
AT5G14580	exons	3297	linsi	AT4G09730	exons	2042	linsi	AT3G14860	exons	1721	linsi	AT3G53140	exons	1081	linsi
AT5G14580	introns	13995	fftnsi	AT4G09730	introns	5697	fftnsi	AT3G14860	introns	4954	linsi	AT3G53140	introns	949	linsi
AT1G78930	exons	1707	linsi	AT2G31240	exons	2441	linsi	AT5G65760	exons	1752	linsi	AT2G47990	exons	1557	linsi
AT1G78930	introns	4683	linsi	AT2G31240	introns	1976	linsi	AT5G65760	introns	3472	linsi	AT2G47990	introns	3583	linsi
AT1G15510	exons	2523	linsi	AT2G24830	exons	1495	linsi	AT3G12210	exons	729	linsi	AT5G62030	exons	1933	linsi
AT1G15510	introns	2999	linsi	AT2G24830	introns	1777	linsi	AT3G12210	introns	1891	linsi	AT5G62030	introns	578	linsi
AT1G15440	exons	2970	linsi	AT3G20810	exons	977	linsi	AT1G49540	exons	1926	linsi	AT1G53280	exons	1439	linsi
AT1G15440	introns	1780	linsi	AT3G20810	introns	2832	linsi	AT1G49540	introns	6524	linsi	AT1G53280	introns	1975	linsi
AT3G55070	exons	1204	linsi	AT1G07590	exons	1761	linsi	AT3G25440	exons	1565	linsi	AT2G17670	exons	1710	linsi
AT3G55070	introns	4451	linsi	AT1G07590	introns	187	linsi	AT3G25440	introns	2354	fftnsi	AT2G17670	introns	594	linsi
AT5G39680	exons	1702	linsi	AT1G70820	exons	1534	linsi	AT4G04180	exons	1902	linsi	AT5G07360	exons	1920	linsi
AT5G39680	introns	2766	linsi	AT1G70820	introns	3121	fftnsi	AT4G04180	introns	12400	fftnsi	AT5G07360	introns	4104	fftnsi
AT4G00560	exons	1292	linsi	AT3G59530	exons	1366	linsi	AT1G65070	exons	3258	linsi	AT1G74030	exons	1929	linsi
AT4G00560	introns	4744	linsi	AT3G59530	introns	2143	linsi	AT1G65070	introns	2025	linsi	AT1G74030	introns	7429	linsi
AT1G68070	exons	1266	linsi	AT5G65540	exons	1860	linsi	AT3G60850	exons	2213	linsi	AT2G42700	exons	2997	linsi
AT1G68070	introns	1787	linsi	AT5G65540	introns	3425	linsi	AT3G60850	introns	1036	linsi	AT2G42700	introns	4010	fftnsi
AT2G22410	exons	1469	linsi	AT2G43540	exons	594	linsi	AT2G17265	exons	1316	linsi	AT1G56570	exons	1452	linsi
AT2G22410	introns	1787	linsi	AT2G43540	introns	1045	linsi	AT2G17265	introns	824	linsi	AT1G56570	introns	2207	linsi
AT3G63140	exons	1130	linsi	AT3G06510	exons	2699	linsi	AT5G64150	exons	371	linsi	AT4G31790	exons	991	linsi
AT3G63140	introns	2139	linsi	AT3G06510	introns	5627	fftnsi	AT5G64150	introns	2308	linsi	AT4G31790	introns	2609	linsi
AT4G13970	exons	2252	linsi	AT2G21710	exons	1983	linsi	AT5G03800	exons	2802	linsi	AT1G72320	exons	2522	linsi
AT4G13970	introns	4021	linsi	AT2G21710	introns	3752	linsi	AT5G03800	introns	4665	linsi	AT1G72320	introns	4604	fftnsi
AT3G51980	exons	994	linsi	AT2G30100	exons	2131	linsi	AT4G37380	exons	1893	linsi	AT2G36660	exons	2247	linsi
AT3G51980	introns	5053	linsi	AT2G30100	introns	1889	linsi	AT4G37380	introns	346	linsi	AT2G36660	introns	2599	fftnsi
AT1G30960	exons	1584	linsi	AT5G39410	exons	1905	linsi	AT1G08460	exons	1413	linsi	AT5G52630	exons	1587	linsi
AT1G30960	introns	5514	linsi	AT5G39410	introns	1699	linsi	AT1G08460	introns	4336	linsi	AT5G52630	introns	548	linsi
AT5G14140	exons	1105	linsi	AT4G34030	exons	1905	linsi	AT1G19290	exons	1837	linsi	AT5G39900	exons	887	linsi
AT5G14140	introns	3091	linsi	AT4G34030	introns	3641	linsi	AT1G19290	introns	896	linsi	AT5G39900	introns	1775	linsi
AT1G30000	exons	2210	linsi	AT1G43860	exons	1398	linsi	AT5G03160	exons	1149	linsi	AT1G31410	exons	2203	linsi
AT1G30000	introns	4816	linsi	AT1G43860	introns	3610	linsi	AT5G03160	introns	3625	linsi	AT1G31410	introns	7481	linsi
AT1G31780	exons	2258	linsi	AT4G04930	exons	168	linsi	AT5G15300	exons	1368	linsi	AT4G26180	exons	1137	linsi
AT1G31780	introns	9515	linsi	AT4G04930	introns	594	linsi	AT5G15300	introns	1272	linsi	AT4G26180	introns	2166	linsi
AT5G59600	exons	1342	linsi	AT5G16210	exons	3697	linsi	AT2G13100	exons	1959	linsi	AT5G50280	exons	2542	linsi
AT5G59600	introns	855	linsi	AT5G16210	introns	6166	linsi	AT2G13100	introns	508	linsi	AT5G50280	introns	1128	linsi
AT1G54990	exons	1716	linsi	AT1G51965	exons	2072	linsi	AT3G14930	exons	1589	linsi	AT1G15980	exons	1533	linsi
AT1G54990	introns	1304	linsi	AT1G51965	introns	4017	linsi	AT3G14930	introns	4794	linsi	AT1G15980	introns	4446	linsi
AT5G02270	exons	1352	linsi	AT5G20320	exons	5541	linsi	AT1G30520	exons	1557	linsi	AT5G43280	exons	801	linsi
AT5G02270	introns	1857	linsi	AT5G20320	introns	12368	fftnsi	AT1G30520	introns	2504	linsi	AT5G43280	introns	1634	linsi
AT5G10750	exons	938	linsi	AT3G29240	exons	990	linsi	AT1G11870	exons	2100	linsi	AT5G13400	exons	2311	linsi
AT5G10750	introns	1948	linsi	AT3G29240	introns	561	linsi	AT1G11870	introns	5441	linsi	AT5G13400	introns	423	linsi
AT4G16180	exons	2599	linsi	AT3G12290	exons	1185	linsi	AT1G59720	exons	1900	linsi	AT3G20230	exons	372	linsi
AT4G16180	introns	5845	fftnsi	AT3G12290	introns	3044	linsi	AT1G59720	introns	899	linsi	AT3G20230	introns	554	linsi
AT5G39960	exons	1794	linsi	AT3G54690	exons	1090	linsi	AT5G65490	exons	2033	linsi	AT2G01320	exons	2777	linsi
AT5G39960	introns	5485	linsi	AT3G54690	introns	2778	linsi	AT5G65490	introns	2823	linsi	AT2G01320	introns	4740	linsi
AT3G46610	exons	2275	linsi	AT1G02020	exons	1938	linsi	AT1G67570	exons	1641	linsi	AT2G31880	exons	1890	linsi
AT3G46610	introns	1344	linsi	AT1G02020	introns	4874	fftnsi	AT1G67570	introns	3064	linsi	AT2G31880	introns	1108	linsi
AT5G46220	exons	1014	linsi	AT3G59770	exons	4628	linsi	AT1G52530	exons	1146	linsi	AT1G05940	exons	1439	linsi
AT5G46220	introns	2032	linsi	AT3G59770	introns	9930	fftnsi	AT1G52530	introns	1106	linsi	AT1G05940	introns	3378	linsi
AT5G24120	exons	1659	linsi	AT5G57460	exons	1916	linsi	AT1G77550	exons	2666	linsi	AT3G18390	exons	3043	linsi
AT5G24120	introns	2272	linsi	AT5G57460	introns	894	linsi	AT1G77550	introns	13749	fftnsi	AT3G18390	introns	7739	linsi
AT2G40190	exons	696	linsi	AT3G02450	exons	1967	linsi	AT1G04110	exons	2666	linsi				
AT2G40190	introns	1809	linsi	AT3G02450	introns	2645	linsi	AT1G04110	introns	188	linsi				
AT2G01860	exons	1494	linsi	AT5G08510	exons	1252	linsi	AT1G09010	exons	2406	linsi				
AT2G01860	introns	648	linsi	AT5G08510	introns	944	linsi	AT1G09010	introns	6048	fftnsi				
AT5G24840	exons	795	linsi	AT1G69910	exons	1567	linsi	AT3G14900	exons	2173	linsi				
AT5G24840	introns	1340	linsi	AT1G69910	introns	87	linsi	AT3G14900	introns	909	linsi				
AT3G55480	exons	2586	linsi	AT1G54350	exons	2345	linsi	AT4G30825	exons						

SUPPLEMENTARY TABLE 2. List of currently valid Neotropical Lecythidaceae names.

Genus	Epithet	Author	Clade	In phylogeny	Updated name
<i>Allantoma</i>	<i>decandra</i>	(Ducke) S.A.Mori, Y.-Y.Huang & Prance	Allantoma	y	
<i>Allantoma</i>	<i>integrifolia</i>	(Ducke) S.A.Mori, Y.-Y.Huang & Prance	Allantoma	y	
<i>Allantoma</i>	<i>kuhlmannii</i>	(Ducke) S.A.Mori, Y.-Y.Huang & Prance	Allantoma		
<i>Allantoma</i>	<i>lineata</i>	(Mart. ex O.Berg) Miers	Allantoma	y	
<i>Allantoma</i>	<i>pachyantha</i>	(A.C.Sm.) S.A.Mori, Y.-Y.Huang & Prance	Allantoma		
<i>Allantoma</i>	<i>pauciramosa</i>	(W.A.Rodrigues) S.A.Mori, Y.-Y.Huang & Prance	Allantoma		
<i>Allantoma</i>	<i>pluriflora</i>	S.A.Mori, Y.-Y.Huang & Prance	Allantoma		
<i>Allantoma</i>	<i>uaupensis</i>	(Spruce ex O.Berg) S.A.Mori, Y.-Y.Huang & Prance	Allantoma		
<i>Bertholletia</i>	<i>excelsa</i>	Bonpl.	Bertholletia	y	
<i>Cariniana</i>	<i>domestica</i>	(Mart.) Miers	Carinaria		
<i>Cariniana</i>	<i>estrellensis</i>	(Raddi) Kuntze	Carinaria	y	
<i>Cariniana</i>	<i>ianeirensis</i>	R.Knuth	Carinaria	y	
<i>Cariniana</i>	<i>legalis</i>	(Mart.) Kuntze	Carinaria	y	
<i>Cariniana</i>	<i>micrantha</i>	Ducke	Carinaria		
<i>Cariniana</i>	<i>parvifolia</i>	S.A.Mori, Prance & Menandro	Carinaria	y	
<i>Cariniana</i>	<i>penduliflora</i>	Prance	Carinaria		
<i>Cariniana</i>	<i>pyriformis</i>	Miers	Carinaria		
<i>Cariniana</i>	<i>rubra</i>	Gardner ex Miers	Carinaria	y	
<i>Chytroma</i>	<i>alutacea</i>	(A.C.Sm.) O.M.Vargas & C.W.Dick	Chartacea	y	y
<i>Chytroma</i>	<i>barnebyi</i>	(S.A.Mori) O.M.Vargas & C.W.Dick	Poiteaui	y	y
<i>Chytroma</i>	<i>brancoensis</i>	(R.Knuth) O.M.Vargas & C.W.Dick	Chartacea		y
<i>Chytroma</i>	<i>chartacea</i>	(O.Berg) O.M.Vargas & C.W.Dick	Chartacea	y	y
<i>Chytroma</i>	<i>congestiflora</i>	(Benoist) R.Knuth	Chartacea	y	y
<i>Chytroma</i>	<i>gracieana</i>	(S.A.Mori) O.M.Vargas & C.W.Dick	Chartacea	y	y
<i>Chytroma</i>	<i>holcogyne</i>	(Sandwith) R.Knuth	Chartacea	y	y
<i>Chytroma</i>	<i>ibiriba</i>	Miers	Poiteaui		y
<i>Chytroma</i>	<i>lurida</i>	(Miers) O.M.Vargas & C.W.Dick	Poiteaui	y	y
<i>Chytroma</i>	<i>mesophylla</i>	(S.A.Mori) O.M.Vargas & C.W.Dick	Chartacea	y	y
<i>Chytroma</i>	<i>parvifructa</i>	(S.A.Mori) O.M.Vargas & C.W.Dick	Chartacea	y	y
<i>Chytroma</i>	<i>poiteaui</i>	(O.Berg) O.M.Vargas & C.W.Dick	Poiteaui	y	y
<i>Chytroma</i>	<i>prancei</i>	(S.A.Mori) O.M.Vargas & C.W.Dick	Poiteaui	y	y
<i>Chytroma</i>	<i>retusa</i>	(Spruce ex O.Berg) Miers	Chartacea	y	y
<i>Chytroma</i>	<i>schomburgkii</i>	(O.Berg) Miers	Chartacea		y
<i>Chytroma</i>	<i>schwackei</i>	(R.Knuth) O.M.Vargas & C.W.Dick	Poiteaui	y	y
<i>Chytroma</i>	<i>serrata</i>	(S.A.Mori) O.M.Vargas & C.W.Dick	Chartacea		y
<i>Chytroma</i>	<i>simiorum</i>	(Benoist) R.Knuth	Chartacea	y	y
<i>Corythophora</i>	<i>alta</i>	R.Knuth	Corythophora	y	
<i>Corythophora</i>	<i>amapaensis</i>	Pires ex S.A.Mori & Prance	Corythophora	y	
<i>Corythophora</i>	<i>labriculata</i>	(Eyma) S.A.Mori & Prance	Corythophora	y	
<i>Corythophora</i>	<i>rimosa</i>	W.A.Rodrigues	Corythophora	y	
<i>Corythophora</i>	<i>rimosa subsp. rubra</i>	S.A.Mori	Corythophora		
<i>Couratari</i>	<i>asterophora</i>	Rizzini	Couratari		
<i>Couratari</i>	<i>asterotricha</i>	Prance	Couratari	y	
<i>Couratari</i>	<i>atrovinosa</i>	Prance	Couratari		
<i>Couratari</i>	<i>calycina</i>	Sandwith	Couratari	y	
<i>Couratari</i>	<i>gloriosa</i>	Sandwith	Couratari		
<i>Couratari</i>	<i>guianensis</i>	Aubl.	Couratari	y	
<i>Couratari</i>	<i>longipedicellata</i>	W.A.Rodrigues	Couratari	y	
<i>Couratari</i>	<i>macrosperma</i>	A.C.Sm.	Couratari	y	
<i>Couratari</i>	<i>multiflora</i>	(Sm.) Eyma	Couratari	y	
<i>Couratari</i>	<i>oblongifolia</i>	Ducke & R.Knuth	Couratari		
<i>Couratari</i>	<i>oligantha</i>	A.C.Sm.	Couratari		
<i>Couratari</i>	<i>prancei</i>	W.A.Rodrigues	Couratari		
<i>Couratari</i>	<i>pyramidata</i>	(Vell.) R.Knuth	Couratari	y	
<i>Couratari</i>	<i>riparia</i>	Sandwith	Couratari		
<i>Couratari</i>	<i>sandwithii</i>	Prance	Couratari		
<i>Couratari</i>	<i>scottmorii</i>	Prance	Couratari		
<i>Couratari</i>	<i>stellata</i>	A.C.Sm.	Couratari	y	
<i>Couratari</i>	<i>tauari</i>	O.Berg	Couratari	y	
<i>Couratari</i>	<i>tenuicarpa</i>	A.C.Sm.	Couratari		
<i>Couroupita</i>	<i>guianensis</i>	Aubl.	Couroupita	y	
<i>Couroupita</i>	<i>nicaraguarensis</i>	DC.	Couroupita	y	
<i>Couroupita</i>	<i>subsessilis</i>	Pilg.	Couroupita	y	
<i>Eschweilera</i>	<i>alata</i>	A.C.Sm.	Parvifolia	y	
<i>Eschweilera</i>	<i>albiflora</i>	(DC.) Miers	Parvifolia	y	
<i>Eschweilera</i>	<i>amazonica</i>	R.Knuth	Parvifolia		
<i>Eschweilera</i>	<i>apiculata</i>	(Miers) A.C.Sm.	Parvifolia		
<i>Eschweilera</i>	<i>atropetiolata</i>	S.A.Mori	Parvifolia	y	
<i>Eschweilera</i>	<i>baguensis</i>	S.A.Mori	Parvifolia		
<i>Eschweilera</i>	<i>beebei</i>	Pittier ex S.A.Mori	Parvifolia		
<i>Eschweilera</i>	<i>biflora</i>	S.A.Mori	Parvifolia	y	
<i>Eschweilera</i>	<i>bogotensis</i>	R.Knuth	Parvifolia		
<i>Eschweilera</i>	<i>boltenii</i>	S.A.Mori	Parvifolia		
<i>Eschweilera</i>	<i>bracteosa</i>	(Poep. ex O.Berg) Miers	Parvifolia	y	
<i>Eschweilera</i>	<i>cabrerana</i>	Philipson	Parvifolia		
<i>Eschweilera</i>	<i>carinata</i>	S.A.Mori	Parvifolia	y	
<i>Eschweilera</i>	<i>chartaceifolia</i>	S.A.Mori	Parvifolia	y	
<i>Eschweilera</i>	<i>collina</i>	Eyma	Parvifolia	y	
<i>Eschweilera</i>	<i>coriacea</i>	(DC.) S.A.Mori	Parvifolia	y	
<i>Eschweilera</i>	<i>correae</i>	J. E. Bat. & S.A.Mori	Parvifolia	y	

<i>Eschweilera</i>	<i>costaricensis</i>	S.A.Mori	Parvifolia		
<i>Eschweilera</i>	<i>cyathiformis</i>	S.A.Mori	Parvifolia	y	
<i>Eschweilera</i>	<i>decolorans</i>	Sandwith	Parvifolia	y	
<i>Eschweilera</i>	<i>donosoensis</i>	J. E. Bat. & S.A.Mori	Parvifolia	y	
<i>Eschweilera</i>	<i>eperuorum</i>	Sandwith	Parvifolia		
<i>Eschweilera</i>	<i>fanshawei</i>	Sandwith	Parvifolia		
<i>Eschweilera</i>	<i>gigantea</i>	(R.Knuth) J.F.Macbr.	Parvifolia		
<i>Eschweilera</i>	<i>grandiflora</i>	(Aubl.) Sandwith	Parvifolia	y	
<i>Eschweilera</i>	<i>harmonii</i>	S.A.Mori	Parvifolia		
<i>Eschweilera</i>	<i>integricalyx</i>	S.A.Mori	Parvifolia		
<i>Eschweilera</i>	<i>itayensis</i>	R.Knuth	Parvifolia		
<i>Eschweilera</i>	<i>juvuensis</i>	R.Knuth	Parvifolia	y	
<i>Eschweilera</i>	<i>klugii</i>	R.Knuth	Parvifolia		
<i>Eschweilera</i>	<i>laevicarpa</i>	S.A.Mori	Parvifolia	y	
<i>Eschweilera</i>	<i>longipedicellata</i>	S.A.Mori	Parvifolia		
<i>Eschweilera</i>	<i>macrocarpa</i>	Pittier	Parvifolia		
<i>Eschweilera</i>	<i>mexicana</i>	T.Wendt, S.A.Mori & Prance	Parvifolia		
<i>Eschweilera</i>	<i>micrantha</i>	(O.Berg) Miers	Parvifolia	y	
<i>Eschweilera</i>	<i>microcalyx</i>	S.A.Mori	Parvifolia		
<i>Eschweilera</i>	<i>neblinensis</i>	S.A.Mori	Parvifolia		
<i>Eschweilera</i>	<i>neei</i>	S.A.Mori	Parvifolia		
<i>Eschweilera</i>	<i>obversa</i>	(O.Berg) Miers	Parvifolia		
<i>Eschweilera</i>	<i>ovata</i>	(Cambess.) Mart. ex Miers	Parvifolia	y	
<i>Eschweilera</i>	<i>paniculata</i>	(O.Berg) Miers	Parvifolia		
<i>Eschweilera</i>	<i>parviflora</i>	(Aubl.) Miers	Parvifolia	y	
<i>Eschweilera</i>	<i>parvifolia</i>	Mart. ex DC.	Parvifolia	y	
<i>Eschweilera</i>	<i>pedicellata</i>	(Rich.) S.A.Mori	Parvifolia	y	
<i>Eschweilera</i>	<i>perumbonata</i>	Pittier	Parvifolia		
<i>Eschweilera</i>	<i>piresii</i>	S.A.Mori	Parvifolia		
<i>Eschweilera</i>	<i>piresii</i> subsp. <i>viridipetala</i>	S.A.Mori	Parvifolia		
<i>Eschweilera</i>	<i>pittieri</i>	R.Knuth	Parvifolia	y	
<i>Eschweilera</i>	<i>potaroensis</i>	Sandwith	Parvifolia		
<i>Eschweilera</i>	<i>praealta</i>	(Sprague) Sandwith	Parvifolia		
<i>Eschweilera</i>	<i>pseudodecolorans</i>	S.A.Mori	Parvifolia	y	
<i>Eschweilera</i>	<i>punctata</i>	S.A.Mori	Parvifolia		
<i>Eschweilera</i>	<i>rabeliana</i>	S.A.Mori	Parvifolia		
<i>Eschweilera</i>	<i>rankinae</i>	S.A.Mori	Parvifolia	y	
<i>Eschweilera</i>	<i>revoluta</i>	S.A.Mori	Parvifolia		
<i>Eschweilera</i>	<i>rhododendrifolia</i>	(R.Knuth) A.C.Sm.	Parvifolia	y	
<i>Eschweilera</i>	<i>rionegrense</i>	S.A.Mori	Parvifolia		
<i>Eschweilera</i>	<i>romeu-cardosoi</i>	S.A.Mori	Parvifolia	y	
<i>Eschweilera</i>	<i>roraimensis</i>	S.A.Mori	Parvifolia		
<i>Eschweilera</i>	<i>ruffifolia</i>	S.A.Mori	Parvifolia	y	
<i>Eschweilera</i>	<i>sagotiana</i>	Miers	Parvifolia	y	
<i>Eschweilera</i>	<i>squamata</i>	S.A.Mori	Parvifolia		
<i>Eschweilera</i>	<i>subcordata</i>	S.A.Mori	Parvifolia		
<i>Eschweilera</i>	<i>subglandulosa</i>	(Steud. ex O.Berg) Miers	Parvifolia	y	
<i>Eschweilera</i>	<i>tenax</i>	(Moritz ex O.Berg) Miers	Parvifolia		
<i>Eschweilera</i>	<i>tenuifolia</i>	(O.Berg) Miers	Parvifolia		
<i>Eschweilera</i>	<i>tessmannii</i>	R.Knuth	Parvifolia	y	
<i>Eschweilera</i>	<i>truncata</i>	A.C.Sm.	Parvifolia	y	
<i>Eschweilera</i>	<i>venezuelica</i>	S.A.Mori	Parvifolia		
<i>Eschweilera</i>	<i>wachenheimii</i>	(Benoist) Sandwith	Parvifolia	y	
<i>Grias</i>	<i>angustipetala</i>	Cornejo & S.A.Mori	Grias	y	
<i>Grias</i>	<i>cauliflora</i>	L.	Grias	y	
<i>Grias</i>	<i>ecuadorica</i>	Cornejo & S.A.Mori	Grias	y	
<i>Grias</i>	<i>haughtii</i>	R.Knuth	Grias		
<i>Grias</i>	<i>longirachis</i>	J.L.Clark & S.A.Mori	Grias	y	
<i>Grias</i>	<i>lucindae</i>	Aymard & M.A.Jaram.	Grias		
<i>Grias</i>	<i>multinervia</i>	Cuatrec.	Grias	y	
<i>Grias</i>	<i>neuberthii</i>	J.F.Macbr.	Grias	y	
<i>Grias</i>	<i>peruviana</i>	Miers	Grias	y	
<i>Grias</i>	<i>portillae</i>	Cornejo	Grias		
<i>Grias</i>	<i>purpuripetala</i>	S.A.Mori, J.D.García-Gonz., S.Angel & C.Alvarado	Grias		
<i>Grias</i>	<i>subbullata</i>	Cornejo & S.A.Mori	Grias	y	
<i>Grias</i>	<i>theobromicarpa</i>	Cornejo & S.A.Mori	Grias	y	
<i>Gustavia</i>	<i>acuminata</i>	S.A.Mori	Gustavia		
<i>Gustavia</i>	<i>acuta</i>	S.A.Mori	Gustavia		
<i>Gustavia</i>	<i>angustifolia</i>	Benth.	Gustavia	y	
<i>Gustavia</i>	<i>augusta</i>	L.	Gustavia	y	
<i>Gustavia</i>	<i>brachycarpa</i>	Pittier	Gustavia	y	
<i>Gustavia</i>	<i>coriacea</i>	S.A.Mori	Gustavia		
<i>Gustavia</i>	<i>dodsonii</i>	S.A.Mori	Gustavia		
<i>Gustavia</i>	<i>dubia</i>	(Kunth) O.Berg	Gustavia	y	
<i>Gustavia</i>	<i>elliptica</i>	S.A.Mori	Gustavia	y	
<i>Gustavia</i>	<i>erythrocarpa</i>	S.A.Mori	Gustavia		
<i>Gustavia</i>	<i>esmeraldana</i>	Cornejo & S.A.Mori	Gustavia		
<i>Gustavia</i>	<i>excelsa</i>	R.Knuth	Gustavia		
<i>Gustavia</i>	<i>flagellata</i>	S.A.Mori	Gustavia		
<i>Gustavia</i>	<i>flagellata</i> var. <i>costata</i>	S.A.Mori	Gustavia		
<i>Gustavia</i>	<i>fosteri</i>	S.A.Mori	Gustavia		
<i>Gustavia</i>	<i>gentryi</i>	S.A.Mori	Gustavia		
<i>Gustavia</i>	<i>gigantophylla</i>	Sandwith	Gustavia		

<i>Gustavia</i>	<i>gracieae</i>	Cornejo & S.A.Mori	<i>Gustavia</i>	y	
<i>Gustavia</i>	<i>gracilipes</i>	R.Knuth	<i>Gustavia</i>		
<i>Gustavia</i>	<i>gracillima</i>	Miers	<i>Gustavia</i>		
<i>Gustavia</i>	<i>grandibracteata</i>	Croat & S.A.Mori	<i>Gustavia</i>		
<i>Gustavia</i>	<i>hexapetala</i>	(Aubl.) Sm.	<i>Gustavia</i>	y	
<i>Gustavia</i>	<i>hubbardiorum</i>	S.A.Mori & Cornejo	<i>Gustavia</i>	y	
<i>Gustavia</i>	<i>inakuama</i>	S.A.Mori	<i>Gustavia</i>		
<i>Gustavia</i>	<i>johnclarkii</i>	S.A.Mori & Cornejo	<i>Gustavia</i>	y	
<i>Gustavia</i>	<i>latifolia</i>	Miers	<i>Gustavia</i>		
<i>Gustavia</i>	<i>longepetiolata</i>	Huber	<i>Gustavia</i>		
<i>Gustavia</i>	<i>longifolia</i>	Poepp. ex O.Berg	<i>Gustavia</i>	y	
<i>Gustavia</i>	<i>longifuniculata</i>	S.A.Mori	<i>Gustavia</i>		
<i>Gustavia</i>	<i>macarenensis</i>	Philipson	<i>Gustavia</i>	y	
<i>Gustavia</i>	<i>monocaulis</i>	S.A.Mori	<i>Gustavia</i>	y	
<i>Gustavia</i>	<i>montana</i>	Cornejo, d. Gut. & J.S. arango-G.	<i>Gustavia</i>		
<i>Gustavia</i>	<i>nana</i>	Pittier	<i>Gustavia</i>	y	
<i>Gustavia</i>	<i>nana</i> subsp. <i>rhodantha</i>	(Standl.) S.A.Mori	<i>Gustavia</i>		
<i>Gustavia</i>	<i>occidentalis</i>	Cuatrec.	<i>Gustavia</i>		
<i>Gustavia</i>	<i>parviflora</i>	(Kunth) S.A.Mori	<i>Gustavia</i>		
<i>Gustavia</i>	<i>paucisperma</i>	(S.A.Mori) S.A.Mori	<i>Gustavia</i>		
<i>Gustavia</i>	<i>petiolata</i>	S.A.Mori	<i>Gustavia</i>	y	
<i>Gustavia</i>	<i>poepigiana</i>	O.Berg	<i>Gustavia</i>	y	
<i>Gustavia</i>	<i>pubescens</i>	Ruiz & Pav. ex O.Berg	<i>Gustavia</i>	y	
<i>Gustavia</i>	<i>pulchra</i>	Miers	<i>Gustavia</i>		
<i>Gustavia</i>	<i>romeroi</i>	S.A.Mori & Garcia-Barr.	<i>Gustavia</i>		
<i>Gustavia</i>	<i>santanderiensis</i>	R.Knuth	<i>Gustavia</i>		
<i>Gustavia</i>	<i>serrata</i>	S.A.Mori	<i>Gustavia</i>	y	
<i>Gustavia</i>	<i>sessilis</i>	S.A.Mori	<i>Gustavia</i>		
<i>Gustavia</i>	<i>speciosa</i>	(Kunth) DC.	<i>Gustavia</i>	y	
<i>Gustavia</i>	<i>superba</i>	(Kunth) O.Berg	<i>Gustavia</i>	y	
<i>Gustavia</i>	<i>tejeræ</i>	R.Knuth	<i>Gustavia</i>		
<i>Gustavia</i>	<i>terminaliflora</i>	S.A.Mori	<i>Gustavia</i>		
<i>Gustavia</i>	<i>verticillata</i>	Miers	<i>Gustavia</i>		
<i>Guaiana</i>	<i>confertiflora</i>	(A.C.Sm.) O.M.Vargas & C.W.Dick	<i>Corrugata</i>	y	y
<i>Guaiana</i>	<i>corrugata</i>	(Poir.) O.M.Vargas & C.W.Dick	<i>Corrugata</i>	y	y
<i>Guaiana</i>	<i>corrugata</i> subsp. <i>rosea</i>	(Spruce ex O.Berg) O.M.Vargas & C.W.Dick	<i>Corrugata</i>	y	y
<i>Guaiana</i>	<i>idatimon</i>	(Aubl.) O.M.Vargas & C.W.Dick	<i>Corrugata</i>	y	y
<i>Guaiana</i>	<i>persistens</i>	(Sagot) O.M.Vargas & C.W.Dick	<i>Corrugata</i>	y	y
<i>Guaiana</i>	<i>persistens</i> subsp. <i>aurantiaca</i>	(S.A.Mori) O.M.Vargas & C.W.Dick	<i>Corrugata</i>	y	y
<i>Guaiana</i>	<i>pneumatophora</i>	(S.A.Mori) O.M.Vargas & C.W.Dick	<i>Corrugata</i>	y	y
<i>Imbiriba</i>	<i>alvimii</i>	(S.A.Mori) O.M.Vargas, M.Ribeiro, & C.W.Dick	<i>Tetrapetala</i>	y	y
<i>Imbiriba</i>	<i>complanata</i>	(S.A.Mori) O.M.Vargas, M.Ribeiro, & C.W.Dick	<i>Tetrapetala</i>		y
<i>Imbiriba</i>	<i>compressa</i>	(Vell.) O.M.Vargas, M.Ribeiro, & C.W.Dick	<i>Tetrapetala</i>	y	y
<i>Imbiriba</i>	<i>mattos-silvae</i>	(S.A.Mori) O.M.Vargas, M.Ribeiro, & C.W.Dick	<i>Tetrapetala</i>	y	y
<i>Imbiriba</i>	<i>nana</i>	(O.Berg) O.M.Vargas, M.Ribeiro, & C.W.Dick	<i>Tetrapetala</i>	y	y
<i>Imbiriba</i>	<i>sphaerocarpa</i>	(M.Ribeiro & S.A.Mori) O.M.Vargas, M.Ribeiro, & C.W.Dick	<i>Tetrapetala</i>	y	y
<i>Imbiriba</i>	<i>tetrapetala</i>	(S.A.Mori) O.M.Vargas, M.Ribeiro, & C.W.Dick	<i>Tetrapetala</i>	y	y
<i>Lecythis</i>	<i>minor</i>	Jacq.	<i>Ollaria</i>	y	
<i>Lecythis</i>	<i>ollaria</i>	L.	<i>Ollaria</i>		
<i>Lecythis</i>	<i>tuyrana</i>	Pittier	<i>Ollaria</i>		
<i>Pachylecythis</i>	<i>ampla</i>	(Miers) O.M.Vargas & C.W.Dick	<i>Pisonis</i>	y	y
<i>Pachylecythis</i>	<i>lanceolata</i>	(Poir.) O.M.Vargas & C.W.Dick	<i>Pisonis</i>	y	y
<i>Pachylecythis</i>	<i>marcgraaviana</i>	(Miers) O.M.Vargas & C.W.Dick	<i>Pisonis</i>	y	y
<i>Pachylecythis</i>	<i>pisonis</i>	(Cambess.) O.M.Vargas & C.W.Dick	<i>Pisonis</i>	y	y
<i>Pachylecythis</i>	<i>zabucaja</i>	(Aubl.) O.M.Vargas & C.W.Dick	<i>Pisonis</i>	y	y
<i>Scottmoria</i>	<i>aguilarii</i>	(S.A.Mori) Cornejo	<i>Integrifolia</i>	y	y
<i>Scottmoria</i>	<i>amplexifolia</i>	(S.A.Mori) Cornejo	<i>Integrifolia</i>		y
<i>Scottmoria</i>	<i>andina</i>	(Rusby) Cornejo	<i>Integrifolia</i>		y
<i>Scottmoria</i>	<i>antioquiensis</i>	(Dugand & Daniel) Cornejo	<i>Integrifolia</i>		y
<i>Scottmoria</i>	<i>awaensis</i>	(S.A.Mori & Cornejo) Cornejo	<i>Integrifolia</i>	y	y
<i>Scottmoria</i>	<i>brevipetiolata</i>	(S.A.Mori & Cornejo) Cornejo	<i>Integrifolia</i>		y
<i>Scottmoria</i>	<i>calyculata</i>	(Pittier) Cornejo	<i>Integrifolia</i>		y
<i>Scottmoria</i>	<i>caudiculata</i>	(R. Knuth) Cornejo	<i>Integrifolia</i>	y	y
<i>Scottmoria</i>	<i>collinsii</i>	(Pittier) Cornejo	<i>Integrifolia</i>	y	y
<i>Scottmoria</i>	<i>hondurensis</i>	(Standl.) Cornejo	<i>Integrifolia</i>	y	y
<i>Scottmoria</i>	<i>integrifolia</i>	(Ruiz & Pav. ex Miers) Cornejo	<i>Integrifolia</i>	y	y
<i>Scottmoria</i>	<i>jacquelyniae</i>	(S.A.Mori) Cornejo	<i>Integrifolia</i>		y
<i>Scottmoria</i>	<i>jefensis</i>	(J.E.Bat. & S.A.Mori) Cornejo	<i>Integrifolia</i>		y
<i>Scottmoria</i>	<i>ovalifolia</i>	(DC.) Cornejo	<i>Integrifolia</i>	y	y
<i>Scottmoria</i>	<i>pachyderma</i>	(Cuatrec.) Cornejo	<i>Integrifolia</i>		y
<i>Scottmoria</i>	<i>panamensis</i>	(Pittier) Cornejo	<i>Integrifolia</i>		y
<i>Scottmoria</i>	<i>podoaquile</i>	(Cornejo) Cornejo	<i>Integrifolia</i>		y
<i>Scottmoria</i>	<i>rimbachii</i>	(Standl.) Cornejo	<i>Integrifolia</i>	y	y
<i>Scottmoria</i>	<i>roseocalyx</i>	(J. E. Bat., S. A. Mori, & J. S. Harrison) Cornejo	<i>Integrifolia</i>	y	y
<i>Scottmoria</i>	<i>rotundicarpa</i>	(J. E. Bat. & S. A. Mori) Cornejo	<i>Integrifolia</i>	y	y
<i>Scottmoria</i>	<i>sclerophylla</i>	(Cornejo) Cornejo	<i>Integrifolia</i>		y
<i>Scottmoria</i>	<i>sessilis</i>	(A.C.Sm.) Cornejo	<i>Integrifolia</i>	y	y
<i>Scottmoria</i>	<i>silverstonei</i>	(Cornejo) Cornejo	<i>Integrifolia</i>		y
<i>Waimiria</i>	<i>amazoniciformis</i>	(S.A.Mori) O.M.Vargas & C.W.Dick	<i>Waimiria</i>	y	y