

**ANNOTATED BIBLIOGRAPHY OF SOCIOECONOMIC
INFORMATION: SEA GRANT PROGRAM**

Working Paper No. 42

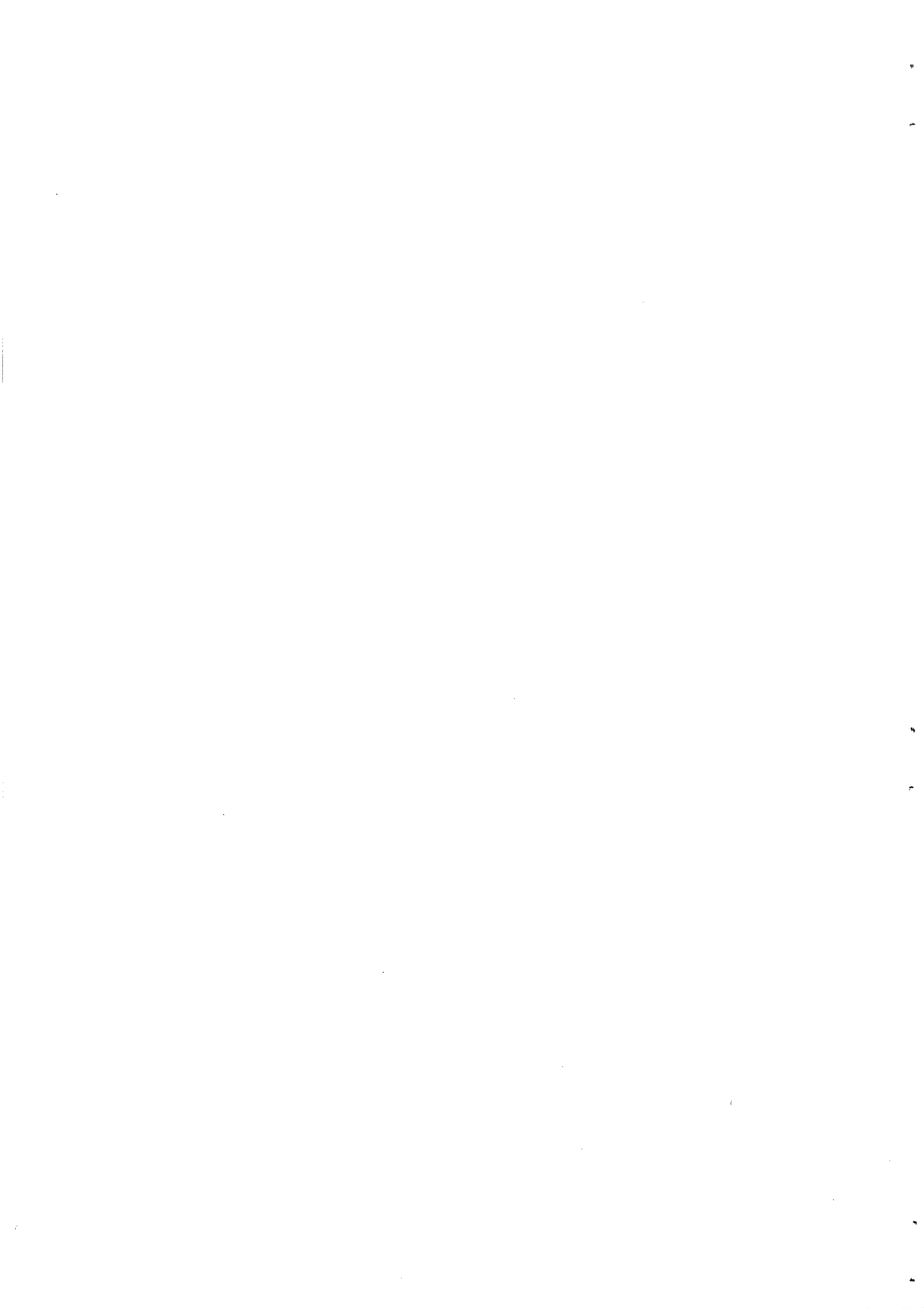
by

Chrystie King
William R. Cook
Research Assistants

Prepared for the Sea Grant Program at
the University of Michigan

FOR DISCUSSION PURPOSES ONLY

None of this material is to be
quoted or reproduced without
the express permission of the
Bureau of Business Research



FOREWORD

This annotated bibliography is a necessary result of the extensive amount of information that has been gathered by the Bureau of Business Research in making a socioeconomic forecast for the ten-county Grand Traverse Bay region. The forecast is being undertaken as part of the Sea Grant Program at the University of Michigan. Members of the Sea Grant team in other disciplines should find the bibliography useful because of the broadness of its subject matter.

The entries have been classified in major subject categories that are pertinent to the socioeconomic research being conducted. Entries are listed alphabetically within each category. Subject categories are economics, environment and natural resources, forecasting, management, planning, population, recreation and tourism, technology, and transportation.

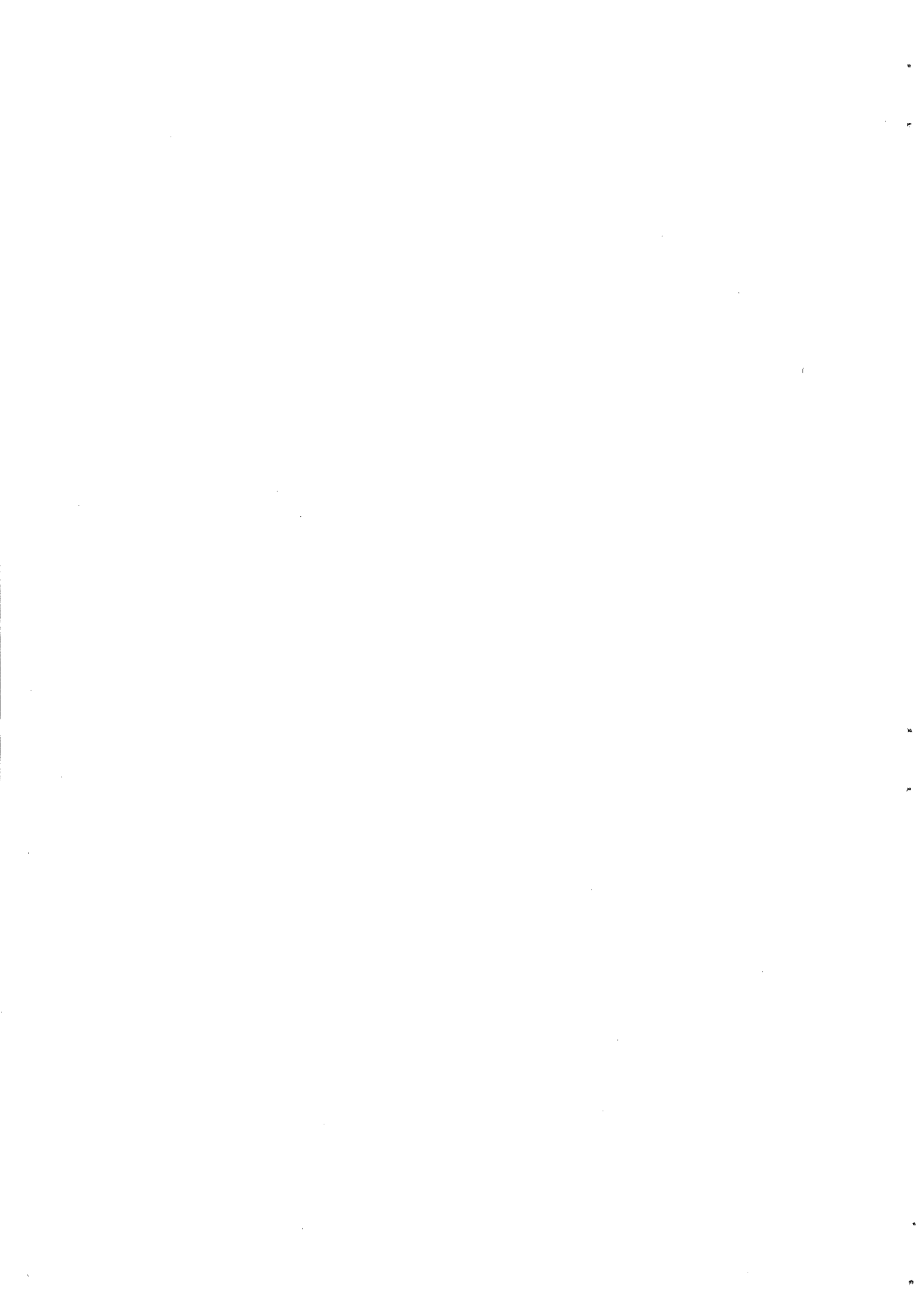
Many of the citations listed in the bibliography were difficult to organize because it was not always clear whether a name or an agency should be listed as author. An index of both authors and titles is provided at the end of the bibliography. The index of authors is cross-referenced to include all possible "authors" under which the publication might be found.

John Ludlow
Research Associate
Bureau of Business Research
University of Michigan



CONTENTS

Economics	1
Environment and Natural Resources	9
Forecasting	16
Management	22
Planning	23
Population	27
Recreation and Tourism	28
Technology	30
Transportation	32
Index of Authors	33
Index of Titles	39



ECONOMICS

Allen, Gerald L. Colorado Ski and Winter Recreation Statistics, 1968. See RECREATION AND TOURISM.

Armenakes, A. A.; Moore, H. J.; and Peden, G. T., Jr. Inland Port Facilities and Economic Growth. State College, Miss.: Division of Research, College of Business and Industry, Mississippi State University, 1970. Four basic purposes of the study are to analyze the role of inland port facilities in economic growth, construct the industrial structure of each inland port county with respect to those groups that utilize water transportation, determine the interindustry demand among groups of industries that use water transportation, and analyze the differentials among inland port counties.

Bargur, Jona. "A Dynamic Interregional Input-Output Programming Model of the California and Western States Water Economy." See FORECASTING.

Bass, Frank M. "A New Product Model for Growth Consumer Durables." See FORECASTING.

Battelle Memorial Institute. Columbus (Ohio) Laboratories. Industries Suited for the Upper Great Lakes Region. Report by David C. Sweet, John M. Griffin, and Hal S. Maggied for the Upper Great Lakes Regional Commission, 1970. Evaluates industries best suited for the Upper Great Lakes region. Identified industries have certain characteristics that make their potential for locating in the region higher than that of other industries.

_____. Socio-Economic Research Section. The Michigan Manpower Study--Phase I. See POPULATION.

_____. Socio-Economic Research Section. Manpower and Regional Economics Div. The Michigan Manpower Study--Final Report. See POPULATION.

Blome, Donald A. The Proposed Sleeping Bear Dunes National Lakeshore--An Assessment of the Economic Impact. Lansing, Mich.: Institute for Community Development and Services, Michigan State University, Sept., 1967. Analyzes the economic effect on agriculture, manufacturing, forestry, and tourism in Benzie and Leelanau counties if the Sleeping Bear Dunes become a national lakeshore.

(Continued)

ECONOMICS--Continued

- Bronder, Leonard D., and Koval, John M. Michigan's Economic Past: Basis for Prosperity. Technical Report No. 10A. Lansing, Mich.: State Resource Planning Division, Office of Economic Expansion, Mich. Dept. of Commerce, Mar., 1967. Traces the development of Michigan's economy from the turn of the century to the present (1967). Covers employment and income trends, explains and provides shift-share analysis of employment changes.
- Michigan's Future: Its Population and Its Economy. Technical Report No. 10B, Lansing, Mich.: State Resource Planning Division, Office of Economic Expansion, Mich. Dept. of Commerce, Mar., 1967. Traces the development of urban centers and establishes the relation between the economic prosperity of the state and the long-run pattern of immigration. Contains economic as well as population data for the year 1980. Economic forecasting methodology is given in the Michigan Manpower Study.
- Brown, Byron B., Jr. Export-Employment Multiplier Analysis of a Major Industrial Community. Study No. 7. Houston, Tex.: Center for Research in Business and Economics, University of Houston, 1964. A study of basic and total employment relations in the Houston Metropolitan Area.
- Bulkley, J. W., and Garman, Cynthia. "Sea Grant Planning Seminars: Ann Arbor--May 11-13, 1970 and Traverse City--May 25-27, 1970." See PLANNING.
- Carter, Anne P. "The Economics of Technological Change." Scientific American, CCXIV (Apr., 1966).
- Chubb, Michael, and Greene, Jeffrey C. An Overview of the Economic Potential of Sport and Commercial Fisheries in the Upper Great Lakes Region. Technical Report No. 3. East Lansing, Mich.: Recreation Research and Planning Unit, Department of Resource Development, College of Agriculture and Natural Resources, Michigan State University, Nov., 1968. The planning statement outlines the present situation, points out the problems and potentials, and suggests program directions for achieving desirable development of the region's sport and commercial fisheries.
- Daniel, Mann, Johnson, & Mendenhall, Consultants. Economic Forecasts for the City of Laguna Beach, California--General Plan Program. Report prepared for the city of Laguna Beach, Nov., 1969. Distributed by the U.S. Dept. of Commerce, National Bureau of Standards, Clearinghouse for Federal Scientific and Technical Information, PB 188 547.

(Continued)

ECONOMICS--Continued

Darnton, Donald C., and Meiburg, Charles O. The Contributions of the Ports of Virginia to the Economy of the Commonwealth. Charlottesville, Va.: Graduate School of Business Administration, University of Virginia, Oct., 1968. This report on the contributions of Virginia's ports to the state's economy introduces changes in method and scope that distinguish the resulting estimates from those of earlier studies.

Dean, Burton V., et al. A Preliminary Report on the Economic Impact of Research and Development Budget Decrements. Cleveland, Ohio: Case Western Reserve University, Dec., 1969. Distributed by the U.S. Dept. of Commerce, National Bureau of Standards, Clearinghouse for Federal Scientific and Technical Information, AD 703 897. This study determines what effect a decrement in the financing of research and development projects by the federal government will have on research organizations and on the local regional economy. A computer simulation model to investigate such effects is developed.

Economic Base Report. Ann Arbor, Mich.: Planning Dept. and Planning Commission, Aug., 1965. In this study generalizations about university towns are tested against available facts, and additional conclusions suggested by the data are advanced.

Edwards, Dale, and Blasius, Richard. Michigan Port Hinterlands as Determined by Inland Carrier Class Rates. Technical Report No. 8. Lansing, Mich.: State Resource Planning Program, Mich. Dept. of Commerce, Dec., 1966. The study offers some facts and figures about the relation between Michigan ports and the state's total commerce and industry, and gives further impetus to the full use of the St. Lawrence Seaway.

Floyd, Charles F. Economic Growth in the Upper Great Lakes Region 1950-1967. Prepared for the Office of Economic Research, Economic Development Administration, U.S. Dept. of Commerce, Washington, D.C., Apr., 1970. The study defines the income gap, documents its magnitude in the Upper Great Lakes region, analyzes the reasons for the slow employment growth, and projects the region's employment growth to 1980.

Fogel, M. E., et al. "Comprehensive Economic Cost Study of Air Pollution Control Costs for Selected Industries and Selected Regions." See ENVIRONMENT AND NATURAL RESOURCES.

Guide to Economic Projections and Forecasts. See FORECASTING.

(Continued)

ECONOMICS--Continued

- Haber, William; Spivey, W. Allen; and Warshaw, Martin R., eds. Michigan in the 1970s: An Economic Forecast. Michigan Business Studies Vol. XVI, No. 4. Ann Arbor, Mich.: Bureau of Business Research, Graduate School of Business Administration, University of Michigan, 1965. An examination of the problems of Michigan's industrial economy and how successfully it can adjust to economic change in the 1970s. The following topics are included: the national economy, the supply of capital in the United States, a demographic analysis of Michigan, the future of the Detroit Metropolitan Area, and the social structure of the Michigan labor market.
- Hazard, John L. Michigan's Commerce: Domestic and International. Technical Report No. 5. Lansing, Mich.: State Resource Planning Program, Mich. Dept. of Commerce, Apr., 1966. Analyzes the size, scope, and structure of Michigan's trade with other states and foreign nations and Michigan's current commercial role.
- "Input-Output Structure of the U.S. Economy: 1963." Survey of Current Business, Nov., 1969.
- Keeling, William B. The Georgia Travel Industry: 1960-1968. See RECREATION AND TOURISM.
- _____, et al. Economic Impact of the Proposed Cumberland Island National Seashore. Report prepared for the National Park Service, U.S. Dept. of the Interior. Athens, Ga.: Bureau of Business and Economic Research, Graduate School of Business Administration, University of Georgia, 1968. The study determines how Camden and Glynn counties as well as the travel industry will be affected if the proposal to develop Cumberland Island as a national park is carried out by the National Park Service.
- Keiser, Sheron Ann. A Survey of Multi-County Cooperation in North Carolina. See PLANNING.
- Kievat, Irene M. Michigan's Manpower Resources. Technical Report No. 10C. Lansing, Mich.: State Resource Planning Program, Mich. Dept. of Commerce, Mar., 1967. Sets forth the demands for occupational skills which will be generated by the future course of our business and industrial development.
- Lage, Gerald M. "The Industrial Impact of the Interstate Highway System: An Input-Output Analysis." See TRANSPORTATION.

(Continued)

ECONOMICS--Continued

Lamont, Larry. "Michigan's Chemical Industry." Unpublished report prepared for the Industrial Development Division, Institute of Science and Technology, University of Michigan, Ann Arbor, Mich., 1968. An intensive study of Michigan's chemical industry--one of the state's most important industries--and its problems.

Leontief, Wassily W. "Input-Output Economics." See FORECASTING.

_____. "The Structure of Development." Scientific American, Sept., 1963. Analysis of an economy by the input-output method reveals its internal structure, which is dictated largely by technology. Applied to underdeveloped economies, the technique maps out paths to growth.

_____. "The Structure of the U.S. Economy." Scientific American, CCXII (Apr., 1965).

_____, and Hoffenberg, Marvin. "The Economic Effects of Disarmament." Scientific American, CCIV (Apr., 1961). The technique of input-output analysis is adopted to facilitate forecasting the effect on sales and jobs if funds now expended for military purposes are reallocated.

Liu, Ben-Chieh. "The Relationship among Population, Income and Retail Sales in SMSAs, 1952-66." Quarterly Review of Economics and Business, X (Spring, 1970).

Loebs, Stephen F. The Traverse City Affiliation in Extended Care. See PLANNING.

Lofting, E. M., and McGauhey, P. H. "An Input-Output Linear Programming Analysis of California Water Requirements." See FORECASTING.

Maki, Wilbur R. "Small Area Applications of Input/Output." See FORECASTING.

Michigan. Department of Commerce. Northwest Michigan Development District and the Office of Community Planning. Community and Area Planning and Development in the Northwest Michigan Development District. Mich. P-295. Lansing, Michigan, May, 1970. The status of planning among the units of government in the Northwest Development District is shown in an inventory of the enabling statutes under which planning and zoning bodies are established and of current planning studies, technical assistance, implementive tools, and educational programs.

(Continued)

ECONOMICS--Continued

Michigan. Executive Office of the Governor. Bureau of Planning and Program Development. Office of Planning Coordination. Michigan's Planning and Development Regions, Delineation Criteria and Comments. See PLANNING.

Mississippi State University. College of Business and Industry. Division of Research. An Analysis of the Economic Feasibility of Expanding the Greenville Port Facilities. Report to the Vicksburg District Corps of Engineers, Vicksburg, Mississippi, 1970. The objectives of this report are to determine if a need exists to expand the Port of Greenville, Mississippi and, if so, when.

"1970 Site Selection Handbook--Vol. II." Prepared by the editors of Industrial Development. Atlanta, Ga.: Conway Research, Inc., 1970. Includes information about industry on growth factors, financing facts, legislative incentives and assistance, guides to sites and development organizations, bibliography, survey of the state development programs, and a checklist of site selection factors.

Northwest Michigan Economic Development District Commission, Traverse City, Michigan. Prologue for Accelerated Growth of Economy. Oct., 1968. The report sets forth the economic profile of the district and provides the basis for the second phase of the program-- the action plan.

Outdoor Recreation Resources Review Commission. Economic Studies of Outdoor Recreation. See RECREATION AND TOURISM.

Pessemier, Edgar A. "Models for New-Product Decisions." See FORECASTING.

Real Estate Research Corporation. Estimates and Projections of Economic and Demographic Characteristics--Saginaw County, Michigan. Mich. P-269. Saginaw, Mich.: Saginaw County Metropolitan Planning Commission, Nov., 1969. Distributed by the U.S. Dept. of Commerce, National Bureau of Standards, Clearinghouse for Federal Scientific and Technical Information, PB 190 056. This study includes estimates and projections of population, employment, housing, auto registrations, and land use for small areas and the city of Saginaw in the Saginaw SMSA. Analytical procedures are briefly defined and assumptions made concerning the future of the local area. The intent of the study was to provide quantitative inputs to the comprehensive planning and transportation study planning processes of Saginaw County.

Larry Smith and Co., Inc., Real Estate Consultants. Land Utilization and Marketability Study, Central Business District Urban Renewal Project, Traverse City, Michigan. Report prepared for Traverse City, Michigan, May 31, 1967. The study evaluates both the suitability of the potential and possible major land reuses for the redevelopment of the project area, as well as the marketability of land allocated for specific reuses.

ECONOMICS--Continued

Southwestern Pennsylvania Planning Commission, Pittsburgh, Pennsylvania.
Alternative Regional Development Patterns. See PLANNING.

Suits, Daniel B. Econometric Model of Michigan. 1960. See FORECASTING.

_____. Econometric Model of Michigan. Compiled for the Office of Economic Expansion, Mich. Dept. of Commerce, Lansing, Michigan, June, 1965. Presents the results of a statistical study of the Michigan economy and its relationships to the national economy.

TRW Incorporated. Systems Group. "Greater Cleveland Goals and Programs."
See PLANNING.

Upper Great Lakes Regional Commission. Economic Atlas, Upper Great Lakes Basin. Washington, D.C., Oct., 1968. Maps summarize data on the economy of the region, which were drawn from county and other local entities. The maps make apparent at a glance significant distributional aspects of population, economics, social, and institutional information.

_____. Growth Centers and Their Potentials in the Upper Great Lakes Region. Report of the Commission. May, 1969. The Commission's report is a view of the region in terms of potential investment "areas."

_____. Working Papers and Regional Project Proposals for Early Action Program, #3: Public Facilities and Services for Economic Development, Developmental Airports. Mar., 1968. Presents an immediate action program of urgently needed projects that are designed to increase the capacity and reliability of airports in carefully selected communities.

Urban Land Research Analysts Corporation, Lexington, Massachusetts. Some Relevant Considerations for Metropolitan Fiscal Policy. Final Report #4. Feb., 1970. Distributed by the U.S. Dept. of Commerce, National Bureau of Standards, Clearinghouse for Federal Scientific and Technical Information, PB 190 761. This report seeks to identify policies that local governments--on their own in some cases or with federal support in others--can adopt to counter the distortions and other deleterious effects of the property tax which is, and will continue to be, their major source of revenue.

U.S. Department of Commerce. "Input-Output Transactions: 1961." See FORECASTING.

_____. Economic Development Administration. Industrial Location as a Factor in Regional Economic Development. Washington, D.C.: Government Printing Office, 1966. This report is designed to help regional commissions determine their role in industrial development.

ECONOMICS--Continued

Vertrees, Robert C. "A Study of Nonresident Landowners of Ten or More Acres in Antrim and Kalkaska Counties, Michigan." See POPULATION.

ENVIRONMENT AND NATURAL RESOURCES

Association of Bay Area Governments, Berkley, California. Bay Shoreline. Supplemental Report RP-2. May, 1968. Distributed by the U.S. Dept. of Commerce, National Bureau of Standards, Clearinghouse for Federal Scientific and Technical Information, PB 184 360. The report concerns a regional plan for the Bay area which is developed around five problems: shoreline development, parks and open space, refuse disposal, transportation, and design of a regional information system.

Ayres, Robert U. Technology and Urban Transportation: Environmental Quality Considerations. See TRANSPORTATION.

Bargur, Jona. "A Dynamic Interregional Input-Output Programming Model of the California and Western States Water Economy." See FORECASTING.

Behrman, Abraham S. Water is Everybody's Business; The Chemistry of Water Purification. Garden City, N.Y.: Anchor Books, 1968. After a description of water sources, the author turns to the types of soluble matter contained in natural waters and the techniques of water purification.

Besselievre, Edmund B. The Treatment of Industrial Wastes. New York: McGraw-Hill Book Co., 1969. A technical work on waste treatment, especially useful as a reference source for engineers in the field of industrial waste treatment. Includes data on governmental involvement in waste treatment programs and recent legislation relating to pollution.

Birmingham-Jefferson County Regional Planning Commission. Development Standards. Dec., 1966. Distributed by the U.S. Dept. of Commerce, National Bureau of Standards, Clearinghouse for Federal Scientific and Technical Information, PB 184 379. The report gives a set of standards for determining future urban land needs--residential, commercial, and industrial--to be used for translation of population and economic activity projections into estimates of land needed for future development.

Blome, Donald A. The Proposed Sleeping Bear Dunes National Lakeshore--An Assessment of the Economic Impact. See ECONOMICS.

Bramer, Henry C., and Motz, Donald J. The Economic Value of Water in Industrial Uses (A Continuation). See FORECASTING.

Briggs, Peter. Water, The Vital Essence. New York: Harper & Row, 1967. A highly readable treatment of the origin of water, water research projects, and the problems of water control.

(Continued)

ENVIRONMENT AND NATURAL RESOURCES--Continued

Chubb, Michael, and Greene, Jeffrey C. An Overview of the Economic Potential of Sport and Commercial Fisheries in the Upper Great Lakes Region. See ECONOMICS.

Committee of Institutional Cooperation. Council on Economic Growth, Technology, and Public Policy. Analysis of Water and Water-Related Research Requirements in the Great Lakes Region. See PLANNING.

Cunningham, Floyd F. 1001 Questions Answered about Water Resources. New York: Dodd, Mead & Co., 1967. Arranged in question-and-answer format, this book treats the problems of supply, development, and conservation of water, providing much information on the sources and consequences of pollution.

Darnton, Donald C., and Meiburg Charles O. The Contributions of the Ports of Virginia to the Economy of the Commonwealth. See ECONOMICS.

DeBell, Garret. The Environmental Handbook. New York: Ballantine Books, Inc., 1970. This handbook was designed as a source of ideas and tactics for the April 22, 1970 National Environmental Teach-In. Experts discuss pollution, pesticides, waste disposal, survival, etc., and present constructive suggestions for individual and group action.

DeTurk, Richard S. Managing the Natural Environment. Prepared for the Tri-State Transportation Commission, New York, New York, Mar., 1970. Distributed by the U.S. Dept. of Commerce, National Bureau of Standards, Clearinghouse for Federal Scientific and Technical Information, PB 190 290. A regional plan for water, sewage, air, and refuse.

Eutrophication: Causes, Consequences, Correctives. Washington, D.C.: Division of Biology and Agriculture, National Research Council, 1969. A collection of papers by international experts on the disastrous consequences of releasing excess nutrients and pollutants into the rivers, lakes, and seas.

Fogel, M. E., et al. "Comprehensive Economic Cost Study of Air Pollution Control Costs for Selected Industries and Selected Regions." Final report of the Research Triangle Institute, Research Triangle Park, N. Carolina, Feb., 1970. Prepared for the National Air Pollution Control Administration of the Department of Health, Education and Welfare. Distributed by the U.S. Dept. of Commerce, National Bureau of Standards, Clearinghouse for Federal Scientific and Technical Information, PB 191 054. Based on estimates of costs of controlling emissions of selected pollutants from 22 sources within 100 metropolitan areas. Costs are presented by region and sources.

(Continued)

ENVIRONMENT AND NATURAL RESOURCES--Continued

- Gloyna, Earnest F., ed. Advances in Water Quality Improvement. Austin, Tex.: University of Texas Press, 1968. A series of scholarly articles on water pollution control and recent progress in water quality improvement. Contains the most advanced thinking on waste-water handling, treatment, and disposal.
- Goldman, Marshall I., ed. Controlling Pollution: The Economics of a Cleaner America. Englewood Cliffs, N.J. : Prentice-Hall, Inc., 1967. A collection of the writings of several biologists, economists, and others interested in the problems of air and water pollution.
- Hittman Associates, Inc. Forecasting Municipal Water Requirements. See FORECASTING.
- Keeling, William B., et al. Economic Impact of the Proposed Cumberland Island National Seashore. See ECONOMICS.
- Lake Michigan Basin Study: Michigan Section. Jan., 1968. Pamphlet prepared by the League of Women Voters of Michigan on existing problems and control measures in the Michigan Section of the Lake Michigan Basin.
- Lofting, E. M., and McGauhey, P. H. "An Input-Output Linear Programming Analysis of California Water Requirements." See FORECASTING.
- Males, Richard M.; Gates, William E.; and Walker, Junius F. A Dynamic Model of Water Quality Management Decision-Making. See FORECASTING.
- Mellanby, Kenneth. Pesticides and Pollution, London: William Collins Sons & Co., Ltd., 1967. Concise descriptions of the chemical properties and effects of pesticides and the various forms of pollutants affecting air, rivers, and seas.
- Nedved, Thomas K. "Pesticides in the Grand Traverse Bay Region of Northern Lake Michigan." Paper presented at the Thirteenth Conference on Great Lakes Research, International Association for Great Lakes Research, Buffalo, New York, Apr. 2, 1970. This study shows, by means of tables and maps, the degree of pesticide concentrations at various points in the Grand Traverse Bay.
- Nikolaieff, George A. The Water Crisis. New York: H. W. Wilson Co., 1967. An analysis of water needs now and in the future. The financial problems inherent in water pollution abatement are given detailed treatment.

ENVIRONMENT AND NATURAL RESOURCES--Continued

Northern Great Lakes Region Multi-Soil Conservation Districts' Framework Program for the Grand Traverse Bay, Broad Program Area--

Michigan No. 10. Prepared by Emmet, Charlesvoix, Antrim, Kalkaska, Grand Traverse, Benzie and Leelanau Soil Conservation Districts with the assistance of the U.S. Soil Conservation Service--Cooperative Extension Service, Oct. 28, 1966. Presents a framework program for the Grand Traverse Bay area, Michigan.

Overman, Michael. Water: Solutions to a Problem of Supply and Demand. Garden City, N. Y.: Doubleday & Co., Inc., 1969. An overview of methods for maintaining a balanced distribution of water for agricultural, industrial, and personal use. Includes information on dams, desalination, and pollution.

Parker, Frank L., and Krenkel, Peter A. Engineering Aspects of Thermal Pollution; Biological Aspects of Thermal Pollution. Nashville, Tenn.: Vanderbilt University Press, 1969. This book documents the disastrous effects which thermal pollution can have on rivers, lakes, estuaries, and coastal waters, with recommendations for solutions.

Rensselaer County Department of Planning and Promotion. Land Use Analysis. Prepared under the Urban Planning Assistance Program for the New York State Office of Planning Coordination, Dec., 1968. Distributed by the U.S. Dept. of Commerce, National Bureau of Standards, Clearinghouse for Federal Scientific and Technical Information, PB 191 181. The object of the study was to determine the existing patterns of development as well as the specific primary building use.

Rhode Island Statewide Comprehensive Transportation and Land Use Planning Program, Providence, Rhode Island. State of Rhode Island Public Rights-of-Way to the Shore. R.I. P-51, Mar., 1970. Distributed by the U.S. Dept. of Commerce, National Bureau of Standards, Clearinghouse for Federal Scientific and Technical Information, PB 191 231. The report summarizes the case law, legislation, and definitions relating to the public rights-of-way, presents an inventory and analysis of the rights-of-way for each municipality, and contains the recommendations for further legislative and administrative actions.

(Continued)

ENVIRONMENT AND NATURAL RESOURCES -- Continued

Herman D. Ruth and Associates, City and Regional Planning Consultants, Berkeley, California. Regional and Local Land Use Planning. Report prepared under a contract with the Public Land Law Review Commission, PLLRC Study Report No. 10, June, 1969 (revised Feb., 1970). Distributed by the U.S. Dept. of Commerce, National Bureau of Standards, Clearinghouse for Federal Scientific and Technical Information, PB 189 410, 411, 412, 413. A series to provide data for the Commission's use in forming a basis for recommending future public land policies to Congress and the President of the United States. Volume III includes the content of the planning program methodologies, practices, and criteria governing the land use planning procedures of each major federal land management agency. Emphasizes the objectives, principles, factors, and methods of land classification employed in land use planning.

Saginaw County Metropolitan Planning Commission. Office of the County Planner. Saginaw County--Land Use Analysis. Mich. P-269. Saginaw, Michigan, Nov., 1969. Distributed by the U.S. Dept. of Commerce, National Bureau of Standards, Clearinghouse for Federal Scientific and Technical Information, PB 190 057. This report analyzes the composition, characteristics, and problem areas of the 1967 county land use pattern and identifies factors and influences which have shaped and are shaping the existing land use pattern in the county. It examines the consequences of the existing land use pattern upon future development, outlines selected courses of action to change existing land use trends, and delineates areas for future development.

_____. Interim Zoning and Subdivision. See PLANNING.

Saunders, Robert J. Forecasting Water Demand, An Inter- and Intra-Community Study. West Virginia University Business and Economic Studies, Vol. 11, No. 2. Morgantown, W. Va.: Bureau of Business Research, College of Commerce, W. Virginia University, 1969. This study identifies the factors closely associated with the level of water usage in urban areas. Alternative forecasting methods as well as projection sets of water usage are suggested and constructed.

_____. "Urban Area Water Consumption: Analysis and Projections." Quarterly Review of Economics and Business, IX (Summer, 1969). Attempts to identify those factors which, on an aggregate basis, are closely associated with the level of water usage in urban areas. Projections are made for the consumption of water supplied by municipal water companies in 141 urban areas for the year 1975.

(Continued)

ENVIRONMENT AND NATURAL RESOURCES--Continued

Seeburger, D. James. "Observations on the Big Rock Nuclear Power Plant: Cooling Water Discharge to Lake Michigan." Lansing, Mich.: Bureau of Water Management, May 21, 1968.

David B. Smith Engineers, Inc. Comprehensive Water Supply, Sewerage, Solid Waste and Air Pollution Control Plans. Fla. P-104. Report to the Area Planning Board of Palm Beach County, West Palm Beach, Florida, Feb., 1970. Distributed by the U.S. Dept. of Commerce, National Bureau of Standards, Clearinghouse for Federal Scientific and Technical Information, PB 191 553. Presents a summary of the information generated under Part I of the study and an analysis of the inventory results leading to the development of comprehensive water supply, sewerage, solid wastes, and air pollution control plans.

Larry Smith and Co., Inc., Real Estate Consultants. Land Utilization and Marketability Study, Central Business District Urban Renewal Project, Traverse City, Michigan. See ECONOMICS.

Southwestern Pennsylvania Regional Planning Commission, Pittsburgh, Pennsylvania. Alternative Regional Development Patterns. See PLANNING.

Urban Land Research Analysts Corporation, Lexington, Massachusetts. Framework for a Coherent Policy on Urban Land. Sept., 1969. Distributed by U.S. Dept. of Commerce, National Bureau of Standards, Clearinghouse for Federal Scientific and Technical Information, PB 190 842. Concerns urban land development related to public control. Identifies broad policy objectives of increasing "urban capacity." Inventories federal policies on urban land, identifies gaps, and proposes policies to fill those gaps.

U.S. Executive Office of the President. Office of Science and Technology. Federal Water Resources Research Program for Fiscal Year 1970. Prepared by the Federal Council for Science and Technology, Committee on Water Resources Research. Washington, D.C.: Government Printing Office, Dec., 1969. This annual report of the COWRR of the FCST reflects the committee's effort at self-evaluation.

The Universities and Environmental Quality--Commitment to Problem Focused Education. Report by John S. Steinhart and Stacie Cherniach to the President's Environmental Quality Council. Washington, D.C.: Office of Science and Technology, Sept., 1969. Study of a few of the vigorous multidisciplinary programs at universities. Programs of interest are those directed at discovering environmental alternatives and developing the broadly trained professionals to deal with environmental problems. Includes recommendations for federal action.

ENVIRONMENT AND NATURAL RESOURCES--Continued

U.S. President's Science Advisory Committee. Effective Use of the Sea. Report of the Panel on Oceanography. Washington, D.C.: Government Printing Office, June, 1966. The panel's studies are an attempt to state the goals for a national program to serve the marine interests, to assess current and planned ocean-oriented programs, to identify opportunities for new programs in technology and science, and to recommend measures to effect an ocean science and technology program consonant with national needs and interests.

Vertrees, Robert C. "A Study of Nonresident Landowners of Ten or More Acres in Antrim and Kalkaska Counties, Michigan." See POPULATION.

Vines, William R. Recreation and Open Space. Fla. P-104(g). Report to the Area Planning Board of Palm Beach County, West Palm Beach, Florida, Apr., 1970. Distributed by the U.S. Dept. of Commerce, National Bureau of Standards, Clearinghouse for Federal Scientific and Technical Information, PB 191 552. Includes an inventory of existing lands and facilities, an examination of administering agencies, summary and problems, and recommended long-range objectives and management actions.

FORECASTING

- Bargur, Jona. "A Dynamic Interregional Input-Output Programming Model of the California and Western States Water Economy." Contribution No. 128. Part VI of Economic Evaluation of Water. Berkeley, Calif.: Sanitary Engineering Research Laboratories, College of Engineering and School of Public Health, University of California, June, 1969. Distributed by the U.S. Dept. of Commerce, National Bureau of Standards, Clearinghouse for Federal Scientific and Technical Information, PB 188 857. The study reviews the role of input-output analysis in resource planning in general and in water and resource planning in particular.
- Barzelay, Martin E. Fourth Semi-Annual Report--Syracuse/NASA Program For the Period July 1, 1969-December 31, 1969: Multidisciplinary Studies in Management and Development Programs in the Public Sector. Mar., 1970. Distributed by the U.S. Dept. of Commerce, National Bureau of Standards, Clearinghouse for Federal Scientific and Technical Information, N70-24092.
- Bass, Frank M. "A New Product Growth Model for Consumer Durables." Management Science, XV (Jan., 1969). This article discusses a growth model for the timing of initial purchase of new products.
- Benrud, C. H. Systematic Procedures for Population Estimates and Projections for North Carolina. Technical report Su-388-1 prepared for the North Carolina State Department of Administration, Feb., 1969. Distributed by the U.S. Dept. of Commerce, National Bureau of Standards, Clearinghouse for Federal Scientific and Technical Information, PB 190 225. Provides a detailed description of computer programs for eight major routines for estimating and projecting county populations.
- Birmingham-Jefferson County Regional Planning Commission. Development Standards. See ENVIRONMENT AND NATURAL RESOURCES.
- Bramer, Henry C., and Motz, Donald J. (Cyrus Wm. Rice Division, NUS Corporation, Pittsburgh, Pennsylvania). The Economic Value of Water in Industrial Uses (A Continuation). Report prepared for the Office of Water Resources Research, U.S. Department of the Interior, Dec., 1969. Distributed by the U.S. Dept. of Commerce, National Bureau of Standards, Clearinghouse for Federal Scientific and Technical Information, PB 189 248. This study tries to expand upon the previously developed methodology of determining industrial water utilization costs and provides a wider base upon which statistically reliable data can be generated.

FORECASTING--Continued

- Bright, James R. "Evaluating Signals of Technological Change."
Harvard Business Review, Jan.-Feb., 1970. Shows how the process of evolution from a scientific concept to a marketable product or technique is affected not only by technological advances, but also by developments in the political, economic, and social environments. Describes methodology for monitoring these environments for signs of change.
- Bronder, Leonard D., and Koval, John M. Michigan's Future: Its Population and Its Economy. See ECONOMICS.
- Brown, Byron B., Jr. Export-Employment Multiplier Analysis of a Major Industrial Community. See ECONOMICS.
- Committee of Institutional Cooperation. Council on Economic Growth, Technology, and Public Policy. Analysis of Water and Water-Related Research Requirements in the Great Lakes Region. See PLANNING.
- Dalkey, N.; Brown, B.; and Cochran, S. The Delphi Method, II: Use of Self-Ratings to Improve Group Estimates. Memorandum RM-6115-PR prepared for the U.S. Air Force Project RAND. Santa Monica, Calif.: The RAND Corporation, Nov., 1969. Distributed by the U.S. Dept. of Commerce, National Bureau of Standards, Clearinghouse for Federal Scientific and Technical Information, AD 698 735. Examines the possibility of using respondent self-ratings as a criterion for selecting more accurate subgroups in applications of the Delphi procedures for eliciting group judgments.
- Daniel, Mann, Johnson & Mendenhall, Consultants. Economic Forecasts for the City of Laguna Beach, California--General Plan Program. See ECONOMICS.
- Downs, Anthony. Bureaucratic Structure and Decision-making. Memorandum RM-4646-1-PR prepared for the U.S. Air Force Project RAND. Santa Monica, Calif.: The RAND Corporation, Oct., 1966. This study analyzes the behavior of bureaucratic organizations in a wide variety of situations.
- Enzer, Selwyn. "A Case Study Using Forecasting as a Decision Making Aid." IFF Working Paper Wp-2. Middletown, Conn.: Institute for the Future, Riverview Center, Dec., 1969. Describes a demonstration in which two forecasting techniques were used to aid the planning and decision-making process. The primary analytic techniques used were the Delphi Method and the cross-impact matrix technique.

FORECASTING--Continued

Floyd, Charles F. Economic Growth in the Upper Great Lakes Region 1950-1967. See ECONOMICS.

Fusfeld, Alan R. "The Technological Progress Function: A New Technique for Forecasting." Working Paper #438-70. Cambridge, Mass.: Alfred P. Sloan School of Management, Massachusetts Institute of Technology, Jan., 1970. Concerns the implications for forecasting when the basis is the plot of technical parameters against accumulative production.

Guide To Economic Projections and Forecasts. Feb., 1967. Distributed by the U.S. Dept. of Commerce, National Bureau of Standards, Clearinghouse for Federal Scientific and Technical Information, PB 185 941. Presents information to regional commissions and others on currently available national, regional, and subregional economic projections and forecasts as well as an overview of the major economic forecasting research of federal agencies and private research organizations.

Haber, William, et al., eds. Michigan in the 1970's: An Economic Forecast. See ECONOMICS.

Harris, Curtis C., Jr. "State and County Projections: A Progress Report of the Regional Forecasting Project." Occasional paper series. College Park, Md.: Bureau of Business and Economic Research, University of Maryland, Jan., 1969. Describes the methodology and some of the results of a model used to estimate state and county projections of employment by industry sectors, unemployment, labor force, and population.

Helmer, Olaf. Analysis of the Future: The Delphi Method. Santa Monica, Calif.: The RAND Corporation, Mar., 1967. Considers the application of the Delphi technique (a method of effectively using informed intuitive judgment) to the anticipation of future events and the impact on those events of manipulation of intervening variables.

Prospects of Technological Progress. Santa Monica, Calif.: The RAND Corporation, Aug., 1967. Discusses the role that forecasting of technological development plays in shaping the future of our society. Sees the growing awareness that there is a whole spectrum of possible futures, with varying degrees of probability, and that through proper planning we may exert considerable influence over these probabilities.

FORECASTING--Continued

Helmer, Olaf. Social Technology. Santa Monica, Calif.: The RAND Corporation, Feb., 1965. Reappraises the methodology of social sciences. Suggests the use of operations analysis approach, i.e., essentially successive approximation to problems in social sciences for which there are no exact, reliable, or well-established theories. Discusses operational model building and systematic use of expert opinions.

Systematic Use of Expert Opinions. Santa Monica, Calif.: The RAND Corporation, Nov., 1967. Advocates the use of the Delphi technique--describes its use and benefits in general terms.

Hittman Associates, Inc., Columbia, Maryland. "The Main II System (HIT-413)," and "The Main II System User's Manual (HIT-413)." Vols. I and II of Forecasting Municipal Water Requirements. Prepared under contract #14-01-0001-1977 with the Office of Water Resources Research, U.S. Dept. of the Interior, Sept., 1969. Distributed by the U.S. Dept. of Commerce, National Bureau of Standards, Clearinghouse for Federal Scientific and Technical Information, PB 190 275 and PB 190 276. Volume I describes the research which led to the development of the MAIN II System, an improved forecasting tool. Volume II documents the MAIN II System computer program and presents detailed instructions for the use of the system in forecasting municipal water requirements.

"Input-Output Structure of the U.S. Economy: 1963." Survey of Current Business, Nov., 1969.

Lage, Gerald M. "The Industrial Impact of the Interstate Highway System: An Input-Output Analysis." See TRANSPORTATION.

Leontief, Wassily W. "Input-Output Economics." Scientific American, XLIIIV (Oct., 1951).

Lofting, E. M., and McGauhey, P. H. "An Input-Output Linear Programming Analysis of California Water Requirements." Contribution 116. Part IV of Economic Evaluation of Water. Berkeley, Calif.: Sanitary Engineering Research Laboratories, College of Engineering and School of Public Health, University of California, Aug., 1968. Distributed by the U.S. Dept. of Commerce, National Bureau of Standards, Clearinghouse for Federal Scientific and Technical Information, PB 188 858. Considers both the methodology and the limitations of the linear programming model as a planning and decision-making goal.

FORECASTING--Continued

- Ludlow, John D. "The Delphi Method: A Systems Approach to the Utilization of Experts in Technological and Environmental Forecasting." Working Paper No. 3. Ann Arbor, Mich.: Bureau of Business Research, Graduate School of Business Administration, University of Michigan, Mar. 24, 1970.
- Maki, Wilbur R. "Small Area Applications of Input-Output." Paper presented at the Input-Output Conference, Palmer House, Chicago, Illinois, Apr. 21, 1970.
- Males, Richard M.; Gates, William E.; and Walker, Junius F. A Dynamic Model of Water Quality Management Decision-Making. Submitted to Office of Water Resources Research, U.S. Dept. of the Interior, by Engineering Sciences, Inc., May, 1970. Report of a study entitled "Systematic Analysis of Management Effectiveness of the Water Quality Control Board System of California." Approach focused on informal procedures, attitudes, and objectives that are operative.
- Michigan. Aeronautics Commission and Department of Commerce in cooperation with Arthur D. Little, Inc. Transportation Predictive Procedures: Commercial and General Aviation. Technical Report No. 9A. Lansing, Mich.: State Resource Planning Division, Mich. Dept. of Commerce, 1966.
- _____. Department of Commerce. State Resource Planning Program. Transportation Predictive Procedures: Summary Report. Technical Report No. 9. Lansing, Mich.: State Resource Planning Division, Mich. Dept. of Commerce, Dec., 1966. Summarizes a series of reports predicting transportation needs in aeronautics, highway, and water travel.
- _____. Department of State Highways. Office of Planning. Resource Transportation Planning Unit in cooperation with Arthur D. Little, Inc. Transportation Predictive Procedures: Highway Travel. Technical Report No. 9B. Lansing, Mich.: State Resource Planning Division, Mich. Dept. of Commerce, Dec., 1966. Details procedures for predicting highway demands in Michigan using a computer model that determines the future highway requirements.
- Morgan, William; Peart, Margaret W.; and Barker, Florence P. Demographic Study of Wyoming: Population in Transition. See POPULATION.
- National Industrial Conference Board. Perspectives for the 70's and 80's: Tomorrow's Problems Confronting Today's Management. See PLANNING.

FORECASTING--Continued

Pessemier, Edgar A. "Models for New-Product Decisions." Institute Paper No. 247. Lafayette, Ind.: Institute for Research in the Behavioral, Economic, and Management Sciences, Herman C. Krannert Graduate School of Industrial Administration, Purdue University, May, 1969. A discussion of new-product ventures and various models used to evaluate a new product and help in decision making.

Real Estate Research Corporation. Estimates and Projections of Economic and Demographic Characteristics--Saginaw, County, Michigan.
See ECONOMICS.

Saunders, Robert J. Forecasting Water Demand, An Inter- and Intra-Community Study. See ENVIRONMENT AND NATURAL RESOURCES.

_____. "Urban Area Water Consumption: Analysis and Projections."
See ENVIRONMENT AND NATURAL RESOURCES.

Suits, Daniel B. Econometric Model of Michigan. Technical Report No. 3. Prepared for the State Resource Planning Division, Mich. Dept. of Commerce, Lansing, Michigan, Apr., 1960. Describes the influence that the national economy exerts on Michigan and develops a vehicle for measuring the impact on Michigan of expected changes in the national economy. The analysis provides a valuable tool for preparing short-term forecasts of the Michigan economy.

_____. Econometric Model of Michigan, 1965. See ECONOMICS.

U.S. Department of Commerce. "Input-Output Transactions: 1961." Staff Working Paper in Economics and Statistics, No. 16. Washington, D.C.: Government Printing Office, July, 1968.

U.S. Department of Transportation. Input-Output Analysis and Transportation Planning. See TRANSPORTATION.

MANAGEMENT

DeTurk, Richard S. Managing the Natural Environment. See ENVIRONMENT AND NATURAL RESOURCES.

Walsh, Donald Eugene. A Suggested Model for the Management of a Sea Grant Institutional Program. Sea Grant Publication No. TAMU-SG-70-213. College Station, Tex.: Texas A&M University, June, 1970. Purposes: identify elements on which the nucleus of the Sea Grant Program can be built; suggest techniques for setting objectives and evaluating their attainment; suggest ways of encouraging faculty and student identification with the program. Offers techniques for administrative control. Recommends two administrative structures based on (1) subject matter formulation and (2) functional formulation.

PLANNING

"Analytical Capabilities for the North Carolina State Planning Process: Introduction and Summary." N.C. P-64. RTI Research Memorandum OU-389-1. State planning report prepared by the Research Triangle Institute for the North Carolina State Department of Administration, Apr., 1969. Distributed by the U.S. Dept. of Commerce, National Bureau of Standards, Clearinghouse for Federal Scientific and Technical Information, PB 190 226. Discusses the research methodology used to analyze long-range needs and to plan for the more efficient allocation of resources over a ten- to twenty-time horizon. Also summarizes the results of several studies designed to assist the North Carolina State government meet these needs.

Armenakes, A. A.; Moore, H. J.; and Peden, G. T., Jr. Inland Port Facilities and Economic Growth. See ECONOMICS.

Association of Bay Area Governments, Berkeley, California. Bay Shoreline. See ENVIRONMENT AND NATURAL RESOURCES.

Russell D. Bailey and Associates. The Master Plan Summary, Town of Peestenkill, Rensselaer County, New York. Prepared for the New York State Office of Planning Coordination, Feb., 1970. Distributed by the U.S. Dept. of Commerce, National Bureau of Standards, Clearinghouse for Federal Scientific and Technical Information, PB 190 192. This report is a summary of the material prepared for the town of Peestenkill, New York, under a Comprehensive Planning Assistance Program.

Birmingham-Jefferson County Regional Planning Commission. Development Standards. See ENVIRONMENT AND NATURAL RESOURCES.

Bulkley, J. W., and Garman, Cynthia. "Sea Grant Planning Seminars: Ann Arbor--May 11-13, 1970 and Traverse City--May 25-27, 1970." Working Paper. Ann Arbor, Mich.: Sea Grant Program, School of Natural Resources, University of Michigan, July, 1970. An abridged record of the issues discussed at the planning seminars at the University of Michigan Sea Grant Program.

Committee of Institutional Cooperation. Council on Economic Growth, Technology, and Public Policy. Analysis of Water and Water-Related Research Requirements in the Great Lakes Region. Prepared for the Office of Water Research, U.S. Dept. of the Interior, June, 1968. Indicates the need for a systems analysis model of the Great Lakes. Presents a potential water-quality model on a subregional, subsystem basis. Need for a regional economic-growth model, a water-related information system, and a gaming-simulation model is described.

PLANNING--Continued

Economic Base Report. (Ann Arbor, Mich.) See ECONOMICS.

Ellis, J. B. Outdoor Recreation Planning in Michigan by a Systems Analysis Approach. Part I: A Manual for "Program RECSYS." See RECREATION AND TOURISM.

Keiser, Sheron Ann. A Survey of Multi-County Cooperation in North Carolina. N.C. P-64. Prepared for the North Carolina State Department of Administration, State Planning Task Force, Sept., 1968. Distributed by the U.S. Dept. of Commerce, National Bureau of Standards, Clearinghouse for Federal Scientific and Technical Information, PB 190 230. Outlines the events leading to the creation of a regional approach to the governmental function using the nature of North Carolina regional or multi-county organizations and programs.

Wm. S. Lawrence and Associates, Inc. Bangor, Michigan Comprehensive Plan. Prepared for the Bangor Planning Commission and the Mich. Dept. of Commerce Community Planning Division, Feb., 1970. Distributed by the U.S. Dept. of Commerce, National Bureau of Standards, Clearinghouse for Federal Scientific and Technical Information, PB 190 383. A comprehensive plan for a small community--specifically, Bangor, Michigan.

Leontief, Wassily. "The Structure of Development." See ECONOMICS.

Loebs, Stephen F. The Traverse City Affiliation in Extended Care. Research Report No. 1. Ann Arbor, Mich.: Bureau of Hospital Administration, University of Michigan, 1969. A case study of an affiliation for extended medical care between a county government-owned long-term care facility and a voluntary short-term hospital in Traverse City, Michigan. Gives facts on hospital costs for the James Decker Munsun Acute Voluntary Hospital in Traverse City. Gives facts on medical care facilities available in Traverse City area.

McDevitt, Matthew, and McGowan, Thomson. New York State's Central Social Environment Study. N.Y. P-116. Prepared for the New York State Office of Planning Coordination, Albany, New York, Jan., 1970. Distributed by the U.S. Dept. of Commerce, National Bureau of Standards, Clearinghouse for Federal Scientific and Technical Information, PB 190 475. Describes the need for a monitoring system to provide the state's decision makers with continuous information on social attitudes and problems and to evaluate systematically the state programs which deal with these problems.

PLANNING--Continued

Michigan. Executive Office of the Governor. Bureau of Planning and Program Development. Office of Planning Coordination. Michigan's Planning and Development Regions, Delineation Criteria and Comments. Information Bulletin No. 3. Lansing, Michigan, Mar., 1968. A list of state planning and development regions--region 10 is the Sea Grant area.

Mississippi State University. College of Business and Industry. Division of Research. An Analysis of the Economic Feasibility of Expanding the Greenville Port Facilities. See ECONOMICS.

National Industrial Conference Board. Perspectives for the 70's and 80's: Tomorrow's Problems Confronting Today's Management. New York: National Industrial Conference Board, 1970. Forecast of the likely problems of the 1970s and 1980s by a panel of experts using the Delphi technique. Also presents the result of a public opinion survey to determine the public awareness of such problems.

"1970 Site Selection Handbook--Vol. II." See ECONOMICS.

Northern Great Lakes Region Multi-Soil Conservation Districts' Framework Program for the Grand Traverse Bay, Broad Program Area--Michigan No. 10. See ENVIRONMENT AND NATURAL RESOURCES.

Pasma, Theodore K. Organized Industrial Districts: A Tool for Community Development. Prepared for the Area Development Division, Office of Technical Services, U.S. Dept. of Commerce, June, 1954. Washington, D.C.: Government Printing Office, 1954. This guidebook describes the establishment of planned communities of industry counterparts of modern residential subdivisions.

Saginaw County Metropolitan Planning Commission. Office of the County Planner. Interim Zoning and Subdivision. Mich. P-269. Saginaw Metropolitan Area Transportation Study, Work Paper--Information, July, 1969. Distributed by the U.S. Dept. of Commerce, National Bureau of Standards, Clearinghouse for Federal Scientific and Technical Information, No. 190 067. This narrative provides a framework within which a local zoning ordinance or subdivision control ordinance may be constructed or amended. A model zoning ordinance is presented and a state model subdivision control ordinance is recommended.

Santa Clara County Planning Department. Completion Report: Planning Research and Analysis Project. California P-148. Distributed by the U.S. Dept. of Commerce, National Bureau of Standards, Clearinghouse for Federal Scientific and Technical Information, PB 184 156. Describes the development and use of an expandable planning data file consisting of land use data and census data for every parcel of land in Santa Clara County. Two land use inventories were conducted, one in 1965 and the other in 1967.

PLANNING--Continued

David B. Smith Engineers, Inc. Comprehensive Water Supply, Sewerage, Solid Waste and Air Pollution Control Plans. See ENVIRONMENT AND NATURAL RESOURCES.

Southwestern Pennsylvania Regional Planning Commission, Pittsburgh, Pennsylvania. Alternative Regional Development Patterns. Aug., 1965. Distributed by the U.S. Dept. of Commerce, National Bureau of Standards, Clearinghouse for Federal Scientific and Technical Information, PB 184 388. Analyzes factors that influence rate and direction of land development. Suggests goals and development principles for future growth. Presents the implications of continuing present development trends or goals and the implications of alternative development patterns. Evaluates alternatives in terms of goals.

TRW Incorporated. Systems Group. "Greater Cleveland Goals and Programs." Prepared for the Greater Cleveland Growth Association and presented to a group of more than 100 community representatives in Cleveland, Ohio, Sept. 21, 1968. This study was conducted with the primary objective of suggesting community roles for the Growth Association.

Urban Land Research Analysts Corporation, Lexington, Massachusetts. Framework for Coherent Policy on Urban Land. See ENVIRONMENT AND NATURAL RESOURCES.

U.S. Department of Commerce. Economic Development Administration. Industrial Location as a Factor in Regional Economic Development. See ECONOMICS.

U.S. Department of Transportation. Office of the Secretary of Transportation. Input-Output Analysis and Transportation Planning. See TRANSPORTATION.

U.S. Executive Office of the President. Office of Science and Technology. The Universities and Environmental Quality--Commitment to Problem Focused Education. See ENVIRONMENT AND NATURAL RESOURCES.

Vines, William R. Recreation and Open Space. See ENVIRONMENT AND NATURAL RESOURCES.

Wilson, A. G. "Research for Regional Planning." Regional Studies, III (Apr., 1969). The paper is concerned with analysis of cities and regions on the one hand, and the process of planning on the other.

POPULATION

- Battelle Memorial Institute. Socio-Economics Research Section. The Michigan Manpower Study--Phase I. Lansing, Mich.: Michigan Employment Security Commission, Dept. of Labor, May, 1966. Presents the first phase of an analysis of the characteristics of Michigan's labor force in the next 15 years; 32 of the 51 specific occupations to be included in the study are analyzed.
- _____. Manpower and Regional Economics Division. The Michigan Manpower Study--Final Report. Lansing, Mich.: Michigan Employment Security Commission, Dept. of Labor, Nov., 1966. The final report on 51 occupations in Michigan with projections of the labor force for the next 15 years.
- Benrud, C. H. Systematic Procedures for Population Estimates and Projections for North Carolina. See FORECASTING.
- Browning, Harley L., and Long, Larry H., eds. Population Mobility: Focuses on Texas. Austin, Tex.: Bureau of Business Research, University of Texas, 1968. The monograph concerns population mobility and redistribution of population in Texas. Topics include interstate migration, patterns of migration for short periods, migration and mobility for urban areas with socioeconomic characteristics of movers, the process of urbanization, and population decline in 71 Texas counties.
- Kievat, Irene M. Michigan's Manpower Resources. See ECONOMICS.
- Liu, Ben-Chieh. "The Relationship among Population, Income and Retail Sales in SMSAs, 1952-66." See ECONOMICS.
- Morgan, William E.; Peart, Margaret W.; and Barker, Florence P. Demographic Study of Wyoming: Population in Transition. Prepared for the Wyoming Department of Economic Planning and Development, Division of Business and Economic Research, College of Commerce and Industry, University of Wyoming, Laramie, Wyoming, Dec., 1969. Contains a survey of historical demographic and related economic and social trends; analysis of historical trends; and population projection by five-year intervals for the state and for each county using several analysis and forecasting methodologies.
- Real Estate Research Corporation. Estimates and Projections of Economic and Demographic Characteristics--Saginaw County, Michigan. See ECONOMICS.
- Vertrees, Robert C. "A Study of Nonresident Landowners of Ten or More Acres in Antrim and Kalkaska Counties, Michigan." Unpublished M.S. dissertation, Department of Resource Development, Michigan State University, 1967.

RECREATION AND TOURISM

- Allen, Gerald L. Colorado Ski and Winter Recreation Statistics, 1968. Boulder, Colo.: Business Research Division, Graduate School of Business Administration, University of Colorado, 1968. Describes the ski industry in Colorado, assesses visits to major Colorado recreation areas, and reflects on the economic effects of the industry.
- Association of Bay Area Governments, Berkeley, California. Bay Shoreline. See ENVIRONMENT AND NATURAL RESOURCES.
- Chubb, Michael, and Greene, Jeffrey C. An Overview of the Economic Potential of Sport and Commercial Fisheries in the Upper Great Lakes Region. See ECONOMICS.
- Ellis, J. B. Outdoor Recreation Planning in Michigan by a Systems Analysis Approach. Part I: A Manual for "Program RECSYS." Technical Report No. 1. Prepared for the Recreation Resource Planning Division, Mich. Dept. of Conservation, Lansing, Michigan, May, 1966. A report on the development and use of a county-to-county systems model and its application in analyzing demand for various activities.
- Hass, Raymond M., and Schmidt, J. William. West Virginia Travel and Tourism Study--The Potential Market. West Virginia Economic Development Series No. 3. Morgantown, W. Va.: College of Commerce, Bureau of Business Research, and the College of Engineering, West Virginia University, Nov., 1964. Measures and analyzes the potential of areas outside of West Virginia and the needs and desires in the state for tourism.
- Keeling, William B. The Georgia Travel Industry: 1960-1968. Travel Research Study No. 11. Prepared for the Tourist Division, Georgia Department of Industry and Trade, Athens, Georgia, 1969. Athens, Ga.: Division of Research, College of Business Administration, University of Georgia. A description of the Georgia travel industry and its economic impact on the state.
- Lam, Frank C. K. A Research Study of Hotel Requirements in Hong Kong. Research and Statistics Department, Hong Kong Tourist Association, Nov., 1969. This study presents an analysis of the total accommodations available in Hong Kong. It attempts to assess future requirements in the light of existing forecasts of visitor traffic and other factors affecting hotel occupancy. Also examines other aspects of the hotel situation in Hong Kong--seasonality and pattern of demand.

RECREATION AND TOURISM--Continued

- Michigan. Department of Conservation. Recreation Resource Planning Division. Michigan's Recreation Future. Prepared with the assistance of the Mich. Dept. of Commerce, Office of Economic Expansion, State Resource Planning Division, Lansing, Michigan, Sept., 1966. A current statement from Michigan's continuing outdoor recreation plan.
- Milliken, J. Gordon, and Mew, H. E., Jr. Economic and Social Impact of Recreation at Reclamation Reservoirs. Denver, Colo.: Industrial Economics Division, Denver Research Institute, University of Denver, Mar., 1969. Distributed by the U.S. Dept. of Commerce, National Bureau of Standards, Clearinghouse for Federal Scientific and Technical Information, PB 188 544. A preliminary exploration of the economic and social impacts of recreation opportunities resulting from reservoir construction.
- North Carolina. Department of Conservation and Development Division of Community Planning. Recreation Master Plan, Eden, North Carolina. N.C. P-54. Sept., 1969. Distributed by the U.S. Dept. of Commerce, National Bureau of Standards, Clearinghouse for Federal Scientific and technical Information, PB 189 809. The study determines the existing recreation facilities available to the people and the city's social, economic, and physical characteristics. Evaluated with respect to both present and future recreation requirements and recommendations.
- Outdoor Recreation Resources Review Commission. Economic Studies of Outdoor Recreation. ORRC Study Report 24. Prepared by the Commission staff, University of California, Berkeley, California. Washington, D.C.: Government Printing Office, 1962. The four economic studies of outdoor recreation making up this study represent different applications of economics to several significant problems of outdoor recreation--those that confront legislators, policymakers, and planners in the field of outdoor recreation.
- Pennington, Allan L.; Ross, Ivan; and Rudelius, William. Minnesota Tourism '68: A Market Analysis. School of Business Administration, University of Minnesota, Minneapolis, Minnesota. St. Paul, Minn.: Minnesota State Planning Agency, Jan., 1969. The study concerns the promotion and improvement of Minnesota's recreational product in order to attract more vacationers.

TECHNOLOGY

- Ayres, Robert U. Technology and Urban Transportation: Environmental Quality Considerations. See TRANSPORTATION.
- Besselièvre, Edmund B. The Treatment of Industrial Wastes. See ENVIRONMENTAL AND NATURAL RESOURCES.
- Bright, James R. "Evaluating Signals of Technological Change." See FORECASTING.
- Carter, Anne P. "The Economics of Technological Change." See ECONOMICS.
- Dean, Burton V., et al. A Preliminary Report on the Economic Impact of Research and Development Budget Decrements. See ECONOMICS.
- Fusfeld, Alan R. "The Technological Progress Function: A New Technique for Forecasting." See FORECASTING.
- Kasper, Raphael G., ed. Technology Assessment--The Proceedings of a Seminar Series. Apr., 1969. Distributed by the U.S. Dept. of Commerce, National Bureau of Standards, Clearinghouse for Federal Scientific and Technical Information, N69-40301-305. A collection of papers given at the Program Policy Studies in Science and Technology, George Washington University, on the concept of technology assessment. The objectives to understand and appraise the results of technological progress.
- Ludlow, John D. "The Delphi Method: A Systems Approach to the Utilization of Experts in Technological and Environmental Forecasting." See FORECASTING.
- Smith, William J. J., and Creamer, Daniel. R&D and Small-Company Growth: A Statistical Review and Company Case Studies. Studies in Business Economics No. 102. New York: National Industrial Conference Board, Inc., 1968. The report seeks to shed needed light on the economic effects of Research and Development on small-company operations, the conditions for the establishment and expansion of permanent small-company research and development programs, the purpose and scope of these programs, and the more important constraints on the utilization of research and development output.
- U.S. Agency for International Development. Natural Resources: Energy, Water and River Basin Development. Vol. I of Science, Technology, and Development. Series of U.S. papers prepared for the United Nations Conference on the Application of Science and Technology for the Benefit of the Less Developed Areas. John H. Durston and Norman J. Meiklejohn, eds. Washington, D.C.: Government Printing Office, 1962.

TECHNOLOGY--Continued

U.S. Congress. House of Representatives. Committee of Science and Astronautics. A Study of Technology Assessment. Report of the Committee of Public Engineering Policy, National Academy of Engineering. Washington, D.C.: Government Printing Office, July, 1969. This study includes an analysis of three separate experiments in technology assessment. The experiments were investigations of methodology, feasibility, and the potential value of technology assessment by groups with varying backgrounds.

TRANSPORTATION

Association of Bay Area Governments, Berkeley, California. Bay Shoreline. See ENVIRONMENT AND NATURAL RESOURCES.

Ayres, Robert U. Technology and Urban Transportation: Environmental Quality Considerations. Croton-on-Hudson, N.Y.: Hudson Institute, Jan., 1968. Vol. I, "Overview." Covers the determination of the set of all possible transportation systems. Gives consideration to a wide range of influencing factors--the systems most appropriate to urban transportation and their technical feasibility in the next decade. Considers factors which determine urban transportation requirements and the most appropriate mix between mass and individual transportation. Vol. II, Parts A and B ("Automotive Propulsion Systems," and "Short-Range Mass Transportation") present a state-of-the-art survey of alternatives to the internal combustion engine for automobiles, buses, and trucks and possible technological solutions to the short-range urban mass transportation problem.

Lage, Gerald M. "The Industrial Impact of the Interstate Highway System: An Input-Output Analysis." Business Papers Series, No. 6. Stillwater, Okla.: College of Business Expansion Service, Oklahoma State University, Nov., 1968. This paper provides an analysis of the industrial impact of the construction of the interstate highway system.

Michigan. Aeronautics Commission and Department of Commerce. Transportation Predictive Procedures: Commercial and General Aviation. See FORECASTING.

Michigan. Department of Commerce. State Resource Planning Program. Transportation Predictive Procedures: Summary Report. See FORECASTING.

Michigan. Department of State Highways. Office of Planning. Resource Transportation Planning Unit. Transportation Predictive Procedures: Highway Travel. See FORECASTING.

_____. Planning Division. Traverse City Area Transportation Study, Draft One. Lansing, Michigan, 1966. A thorough examination of transportation system requirements--current usage and deficiencies and proposals for the future transportation within the Traverse City urban area.

U.S. Department of Transportation. Office of the Secretary of Transportation. Input-Output Analysis and Transportation Planning. Jan., 1969. Distributed by the U.S. Dept. of Commerce, National Bureau of Standards, Clearinghouse for Federal Scientific and Technical Information, PB 191 725.

INDEX OF AUTHORS

- Allen, Gerald L., 28
 Ann Arbor Planning Department and
 Planning Commission. See
 Economic Base Report, 3
 Armenakes, A.A., 1
 Association of Bay Area Govern-
 ments, Berkeley, California, 9
 Ayres, Robert U., 32
- Russell D. Bailey and Associates, 23
 Bangor Planning Commission. See
 Wm. S. Lawrence and Associates,
 Inc., 24
 Bargur, Jona, 16
 Barker, Florence P., 27
 Barzelay, Martin E., 16
 Bass, Frank M., 6
 Battelle Memorial Institute
 --Columbus (Ohio) Laboratories,
 1
 --Manpower and Regional Economics
 Division, 27
 --Socio-Economics Research
 Section, 27
 Behrman, Abraham S., 9
 Benrud, C. H., 16
 Besselievre, Edmund B., 9
 Birmingham-Jefferson County Regional
 Planning Commission, 9
 Blasius, Richard, 3
 Blome, Donald A., 1
 Bramer, Henry C., 16
 Briggs, Peter, 9
 Bright, James R., 17
 Bronder, Leonard D., 2
 Brown, B., 17
 Brown, Byron B., Jr., 2
 Browning, Harley L., 27
 Bulkley, J. W., 23
- Carter, Anne P., 2
 Case Western Reserve University.
See Dean, 3
 Cherniach, Stacie. See U.S.,
 Executive Office of the
 President, second entry, 14
- Chubb, Michael, 2
 Cochran, S., 17
 Committee of Institutional Coopera-
 tion, Council on Economic Growth,
 Technology, and Public Policy, 23
 Conway Research, Inc. See 1970
 Site Selection Handbook, 6
 Creamer, Daniel, 30
 Cunningham, Floyd F., 10
- Dalkey, N., 17
 Daniel, Mann, Johnson, & Mendenhall,
 Consultants, 2
 Darnton, Donald C., 3
 Dean, Burton V., 3
 DeBell, Garret, 10
 DeTurk, Richard S., 10
 Downs, Anthony, 17
 Durston, John H. See U.S., Agency
 for International Development, 30
- Edwards, Dale, 3
 Ellis, J. B., 28
 Engineering Sciences, Inc. See Males,
 20
 Enzer, Selwyn, 17
- Federal Council for Science and Techno-
 logy, Committee on Water Resources
 Research. See U.S., Executive
 Office of the President, 14
 Florida, Area Planning Board of Palm
 Beach County. See David B. Smith,
 Engineers, Inc., 14; Vines, 15
 Floyd, Charles F., 3
 Fogel, M.E., 10
 Fusfeld, Alan R., 18
- Garman, Cynthia, 23
 Gates, William E., 20
 Gloyna, Earnest F., 11
 Goldman, Marshall I., 11
 Greene, Jeffrey C., 2
 Griffin, John M. See Battelle
 Memorial Institute, 1

INDEX OF AUTHORS--Continued

- Haber, William, 4
Harris, Curtis C., Jr., 18
Hass, Raymond M., 28
Hazard, John L., 4
Helmer, Olaf, 18, 19
Hittman Associates, Inc.,
 Columbia, Maryland, 19
Hoffenberg, Marvin, 5
Hong Kong Tourist Association.
 See Lam, 28
Hudson Institute. See Ayres, 32

Institute for the Future.
 See Enzer, 17

Kasper, Raphael G., 30
Keeling, William B., 4, 28
Keiser, Sheron Ann, 24
Kievat, Irene M., 4
Koval, John M., 2
Krenkel, Peter A., 12

Lage, Gerald M., 32
Lam, Frank C.K., 28
Lamont, Larry, 5
Wm. S. Lawrence and Associates,
 Inc., 24
League of Women Voters of
 Michigan. See Lake Michigan
 Basin Study, 11
Leontief, Wassily W., 5, 19
Arthur D. Little, Inc. See
 Michigan, Aeronautics Commission
 and Department of Commerce,
 20; Michigan, Department of
 State Highways, Office of Planning,
 Resource Transportation Unit, 20
Liu, Ben-Chieh, 5
Loebs, Stephen F., 24
Lofting, E.M., 19
Long, Larry H., 27
Ludlow, John D., 20

Maggied, Hal S. See Battelle
 Memorial Institute, 1
Maki, Wilbur R., 20

Males, Richard M., 20
McDevitt, Matthew, 24
McGauhey, P.H., 19
Mc Gowan, Thomson, 24
Meiburg, Charles O., 3
Meiklejohn, Norman J. See U.S.,
 Agency for International Develop-
 ment, 30
Mellanby, Kenneth, 11
Mew, H.E., Jr., 29
Michigan, Aeronautics Commission
 and Department of Commerce in
 cooperation with Arthur D.
 Little, Inc., 20
Michigan, Department of Commerce
 --Community Planning Division.
 See Wm. S. Lawrence and
 Associates, Inc., 24
 --Northwest Michigan Develop-
 ment District and Office of
 Community Planning, 5
 --Office of Economic Expansion.
 See Bronder, 2; Bronder and
 Koval, 2; Suits, 7, 21;
 Michigan, Department of
 Conservation, 29
 --State Resource Planning Program,
 20. See also Edwards, 3;
 Hazard, 4; Kievat, 4
Michigan, Department of Conservation,
 Recreation Resource Planning Divi-
 sion, 29. See also Ellis, 28
Michigan, Department of Labor. See
 Battelle Memorial Institute, 27
Michigan, Department of State Highways,
 Office of Planning, Resource
 Transportation Planning Unit in
 cooperation with Arthur D. Little,
 Inc., 20
Michigan, Executive Office of the
 Governor, Bureau of Planning and
 Program Development, Office of
 Planning Coordination, 25
Michigan, Planning Division, 32
Michigan Employment Security Commis-
 sion, Department of Labor. See
 Battelle Memorial Institute, 27

INDEX OF AUTHORS--Continued

- Milliken, J. Gordon, 29
- Minnesota State Planning Agency.
See Pennington, 29
- Mississippi State University,
 College of Business and
 Industry, Division of Re-
 search, 6
- Moore, H.G., 1
- Morgan, William E., 27
- Motz, Donald J., 16
- National Academy of Engineering,
 Committee of Public Engi-
 neering Policy. See U.S.,
 Congress, House of Representa-
 tives, Committee of Science and
 Astronautics, 31
- National Air Pollution Control
 Administration. See Fogel, 10
- National Industrial Conference
 Board, 25. See also Smith, 30
- National Park Service. See
 Keeling, et al., 4
- National Research Council,
 Division of Biology and
 Agriculture. See
 Eutrophication, 10
- Nedved, Thomas K., 11
- New York State Office of Planning
 Coordination. See Rensselaer
 County Department of Planning
 and Promotion, 12; Russell D.
 Bailey and Associates, 23;
 McDevitt, 24
- Nikolaieff, George A., 11
- North Carolina, Department of
 Conservation and Development
 Division of Community Planning,
 29
- North Carolina State Department
 of Administration. See Benrud,
 16; Analytical Capabilities for
 the North Carolina State
 Planning Process, 23; Keiser,
 24
- Northwest Michigan Development District
 and the Office of Community
 Planning. See Michigan, Depart-
 ment of Commerce, 5
- Northwest Michigan Economic Develop-
 ment District Commission, Traverse
 City, Michigan, 6
- Office of Community Planning. See
 Michigan, Department of Com-
 merce, 5
- Office of Economic Expansion. See
 Bronder, 2; Bronder and Koval,
 2; Suits, 7; Michigan, Depart-
 ment of Conservation, 29
- Office of Water Resources Research.
See Bramer, 16; Hittman Associates,
 Inc., 19; Males, 20; Committee
 of Institutional Cooperation, 23
- Outdoor Recreation Resources Review
 Commission, 29
- Overman, Michael, 12
- Panel on Oceanography. See U.S.,
 President's Science Advisory
 Committee, 15
- Parker, Frank L., 12
- Pasma, Theodore K., 25
- Peart, Margaret, W., 27
- Peden, G. T., Jr., 1
- Pennington, Allan L., 29
- Pessemier, Edgar A., 21
- The RAND Corporation. See Dalkey,
 17; Downs, 17; Helmer, 18, 19
- Real Estate Research Corporation, 6
- Rensselaer County Department of
 Planning and Promotion, 12
- Research Triangle Institute. See
 Fogel, 10; Analytical Capabili-
 ties for the North Carolina
 State Planning Process, 23
- Rhode Island Statewide Comprehensive
 Transportation and Land Use
 Planning Program, Providence,
 Rhode Island, 12

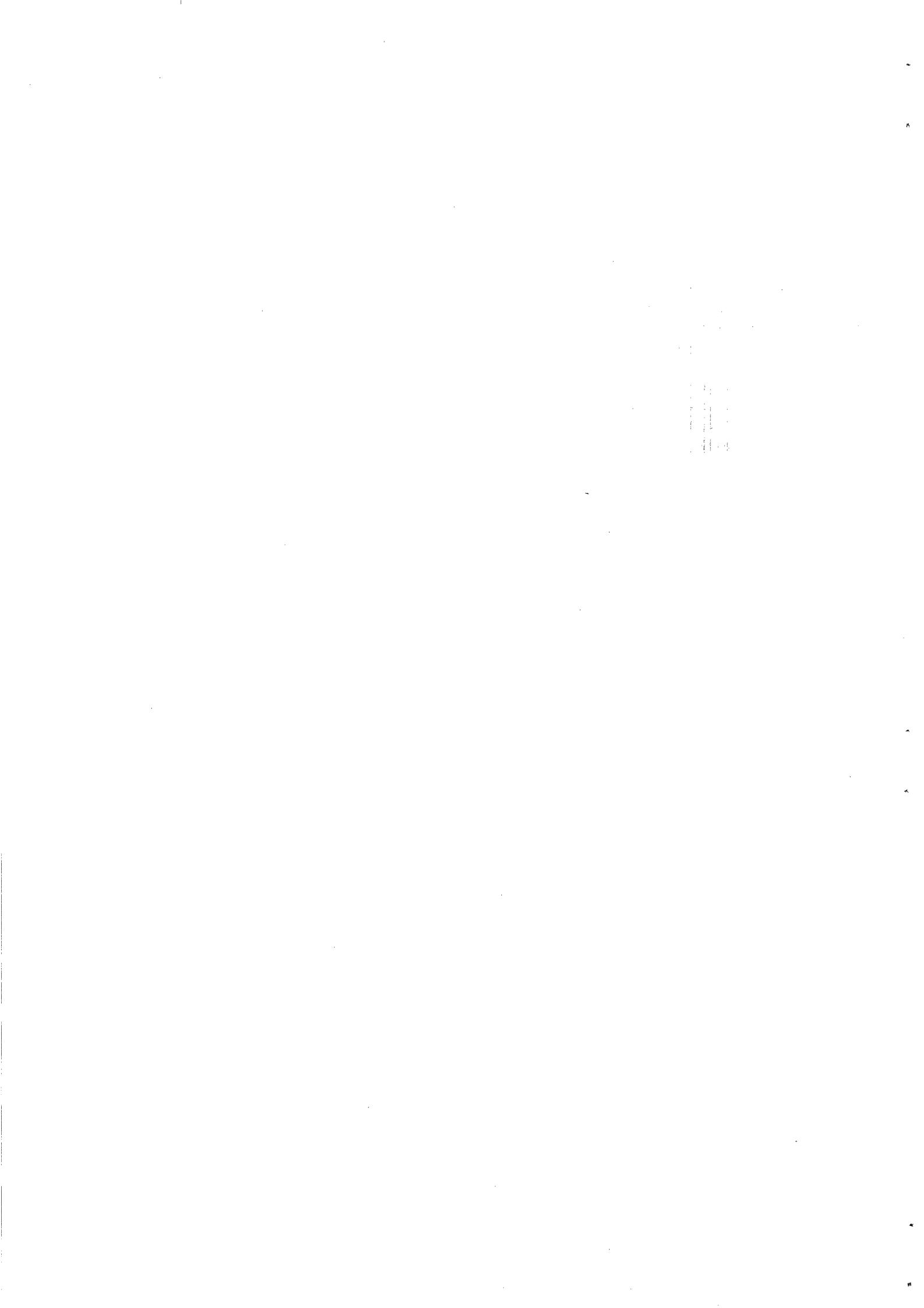
INDEX OF AUTHORS--Continued

- Cyrus Um. Rice Division, NUS Corporation, Pittsburgh, Pennsylvania. See Bramer, 16
- Ross, Ivan, 29
- Rudelius, William, 29
- Herman D. Ruth and Associates, City and Regional Planning Consultants, Berkeley, California, 13
- Saginaw County Metropolitan Planning Commission, Office of the County Planner, 13, 25
- Saginaw County Metropolitan Planning Commission. See Real Estate Research Corporation, 6
- Santa Clara County Planning Department, 25
- Saunders, Robert J., 13
- Schmidt, J. William, 28
- Seeburger, D. James, 14
- David B. Smith Engineers, Inc., 14
- Larry Smith and Co., Inc., Real Estate Consultants, 6
- Smith, William J.J., 30
- Southwestern Pennsylvania Regional Planning Commission, Pittsburgh, Pennsylvania, 26
- Spivey, W. Allen, 4
- State Resource Planning Division. See Bronder, 2; Bronder and Koval, 2; Michigan Department of Conservation, 29
- State Resource Planning Program. See Edwards, 3; Hazard, 4; Kievat, 4
- Steinhart, John S. See U.S. Executive Office of the President, second entry, 14
- Suits, Daniel B., 7, 21
- Sweet, David C. See Battelle Memorial Institute, 1
- Tri-State Transportation Commission, New York. See DeTurk, 10
- TRW Incorporated, Systems Group, 26
- University of Houston. See Brown, 2
- University of Virginia. See Darnton, 3
- University of Wyoming, Department of Economic Planning and Development. See Morgan, 27
- Upper Great Lakes Regional Commission, 7
- Urban Land Research Analysts Corporation, Lexington, Massachusetts, 7, 14
- U.S., Agency for International Development, 30
- U.S., Congress, House of Representatives, Committee on Science and Astronautics, 31
- U.S., Department of Commerce, 21
- U.S., Department of Commerce --Economic Development Administration, 7
- Office of Technical Services, Area Development Division. See Pasma, 25
- U.S., Department of Health, Education and Welfare, National Air Pollution Control Administration. See Fogel, 10
- U.S., Department of the Interior --National Park Service. See Keeling, et al., 4
- Office of Water Resources Research. See Bramer, 16; Hittman Associates, Inc., 19; Males, 20; Committee of Institutional Cooperation, 23
- U.S., Executive Office of the President, Office of Science and Technology, 14
- U.S., President's Science Advisory Committee, 15
- U.S., Department of Transportation, Office of the Secretary of Transportation, 32

INDEX OF AUTHORS--Continued

Vertrees, Robert C., 27
Vicksburg (Miss) District Corps
of Engineers. See Mississippi
State University, 6
Vines, William R., 15

Walker, Junius F., 20
Walsh, Donald Eugene, 22
Warshaw, Martin R., 4
Wilson, A.G., 26



INDEX OF TITLES

Advances in Water Quality Improvement.....	11
Alternative Regional Development Patterns.....	26
An Analysis of the Economic Feasibility of Expanding the Greenville Port Facilities.....	6
Analysis of the Future: The Delphi Method.....	18
Analysis of Water and Water-Related Research Requirements in the Great Lakes Region.....	23
Analytical Capabilities for the North Carolina State Planning Process: Introduction and Summary.....	23
Bangor, Michigan Comprehensive Plan.....	24
Bay Shoreline.....	9
Bureaucratic Structure and Decision-making.....	17
A Case Study Using Forecasting as a Decision Making Aid.....	17
Colorado Ski and Winter Recreation Statistics, 1968.....	28
Community and Area Planning and Development in the Northwest Michigan Development District.....	5
Completion Report: Planning Research and Analysis Project.....	25
Comprehensive Economic Cost Study of Air Pollution Control Costs for Selected Industries and Selected Regions.....	10
Comprehensive Water Supply, Sewerage, Solid Waste and Air Pollution Control Plans.....	14
The Contributions of the Ports of Virginia to the Economy of the Commonwealth.....	3
Controlling Pollution: The Economics of a Cleaner America.....	11
The Delphi Method: A Systems Approach to the Utilization of Experts in Technological and Environmental Forecasting...	20
The Delphi Method, II: Use of Self-Ratings to Improve Group Estimates.....	17

INDEX OF TITLES--Continued

Demographic Study of Wyoming: Population in Transition.....	27
Development Standards.....	9
A Dynamic Interregional Input-Output Programming Model of the California and Western States Water Economy.....	16
A Dynamic Model of Water Quality Management Decision-Making....	20
Econometric Model of Michigan (1960).....	21
Econometric Model of Michigan (1965).....	7
Economic and Social Impact of Recreation at Reclamation Reservoirs.....	29
Economic Atlas, Upper Great Lakes Basin.....	7
Economic Base Report (Ann Arbor).....	3
The Economic Effects of Disarmament.....	5
Economic Forecasts for the City of Laguna Beach, California-- General Plan Program.....	2
Economic Growth in the Upper Great Lakes Region, 1950-1967....	3
Economic Impact of the Proposed Cumberland Island National Seashore.....	4
The Economics of Technological Change.....	2
Economic Studies of Outdoor Recreation.....	29
The Economic Value of Water in Industrial Uses (A Continuation).....	16
Effective Use of the Sea.....	15
Engineering Aspects of Thermal Pollution; Biological Aspects of Thermal Pollution.....	12
The Environmental Handbook.....	10
Estimates and Projections of Economic and Demographic Characteristics--Saginaw County, Michigan.....	6

INDEX OF TITLES--Continued

Eutrophication: Causes, Consequences, Correctives.....	10
Evaluating Signals of Technological Change.....	17
Export-Employment Multiplier Analysis of a Major Industrial Community.....	2
Federal Water Resources Research Program for Fiscal Year 1970.....	14
Forecasting Municipal Water Requirements.....	19
Forecasting Water Demand, An Inter- and Intra-Community Study.....	13
Fourth Semi-Annual Report--Syracuse/NASA Program for the Period July 1, 1969-December 31, 1969: Multidisciplinary Studies in Management and Development Programs in the Public Sector.....	16
Framework for a Coherent Policy on Urban Land.....	14
The Georgia Travel Industry: 1960-1968.....	28
Greater Cleveland Goals and Programs.....	26
Growth Centers and Their Potentials in the Upper Great Lakes Region.....	7
Guide To Economic Projections and Forecasts.....	18
The Industrial Impact of the Interstate Highway System: An Input-Output Analysis.....	32
Industrial Location as a Factor in Regional Economic Development.....	7
Industries Suited for the Upper Great Lakes Region.....	1
Inland Port Facilities and Economic Growth.....	1
Input-Output Analysis and Transportation Planning.....	32
Input-Output Economics.....	19
An Input-Output Linear Programming Analysis of California Water Requirements.....	19
Input-Output Structure of the U.S. Economy: 1963.....	19

INDEX OF TITLES--Continued

Input-Output Transactions: 1961.....	21
Interim Zoning and Subdivision.....	25
Lake Michigan Basin Study: Michigan Section.....	11
Land Use Analysis.....	12
Land Utilization and Marketability Study, Central Business District Urban Renewal Project, Traverse City, Michigan....	6
The Main II System (HIT-413).....	19
The Main II System User's Manual (HIT-413).....	19
Managing the Natural Environment.....	10
The Master Plan Summary, Town of Peestenkill, Rensselaer County, New York.....	23
Michigan in the 1970's: An Economic Forecast.....	4
The Michigan Manpower Study--Phase I.....	27
The Michigan Manpower Study--Final Report.....	27
Michigan Port Hinterlands as Determined by Inland Carrier Class Rates.....	3
Michigan's Chemical Industry.....	5
Michigan's Commerce: Domestic and International.....	4
Michigan's Economic Past: Basis for Prosperity.....	2
Michigan's Future: Its Population and Its Economy.....	2
Michigan's Manpower Resources.....	4
Michigan's Planning and Development Regions, Delineation Criteria and Comments.....	25
Michigan's Recreation Future.....	29
Minnesota Tourism '68: A Market Analysis.....	29

INDEX OF TITLES--Continued

Models for New-Product Decisions.....	21
Natural Resources: Energy, Water and River Basin Development.....	30
A New Product Growth Model for Consumer Durables.....	16
New York State's Central Social Environment Study.....	24
1970 Site Selection Handbook--Vol. II.....	6
Northern Great Lakes Region Multi-Soil Conservation Districts' Framework Program for the Grand Traverse Bay, Broad Program Area--Michigan No. 10.....	12
Observations on the Big Rock Nuclear Power Plant: Cooling Water Discharge to Lake Michigan.....	14
1001 Questions Answered about Water Resources.....	10
Organized Industrial Districts: A Tool for Community Development.....	25
Outdoor Recreation Planning in Michigan by a Systems Analysis Approach.....	28
An Overview of the Economic Potential of Sport and Commercial Fisheries in the Upper Great Lakes Region.....	2
Perspectives for the 70's and 80's: Tomorrow's Problems Confronting Today's Management.....	25
Pesticides and Pollution.....	11
Pesticides in the Grand Traverse Bay Region of Northern Lake Michigan.....	11
Population Mobility: Focuses on Texas.....	27
A Preliminary Report on the Economic Impact of Research and Development Budget Decrements.....	3
Prologue for Accelerated Growth of Economy.....	6
The Proposed Sleeping Bear Dunes National Lakeshore--An Assessment of the Economic Impact.....	1

INDEX OF TITLES--Continued

Prospects of Technological Progress.....	18
R & D and Small-Company Growth: A Statistical Review and Company Case Studies.....	30
Recreation and Open Space.....	15
Recreation Master Plan, Eden, North Carolina.....	29
Regional and Local Land Use Planning.....	13
The Relationship among Population, Income and Retail Sales in SMSAs, 1952-66.....	5
Research for Regional Planning.....	26
A Research Study of Hotel Requirements in Hong Kong.....	28
Saginaw County--Land Use Analysis.....	13
Sea Grant Planning Seminars: Ann Arbor--May 11-13, 1970 and Traverse City--May 25-27, 1970.....	23
Small Area Applications of Input/Output.....	20
Social Technology.....	19
Some Relevant Considerations for Metropolitan Fiscal Policy....	7
State and County Projections: A Progress Report of the Regional Forecasting Project.....	18
State of Rhode Island Public Rights-of-Way to the Shore.....	12
The Structure of Development.....	5
The Structure of the U.S. Economy.....	5
A Study of Nonresident Landowners of Ten or More Acres in Antrim and Kalkaska Counties, Michigan.....	27
A Study of Technology Assessment.....	31
A Suggested Model for the Management of a Sea Grant In- stitutional Program.....	22

INDEX OF TITLES--Continued

A Survey of Multi-County Cooperation in North Carolina.....	24
Systematic Procedures for Population Estimates and Projections for North Carolina.....	16
Systematic Use of Expert Opinions.....	19
The Technological Progress Function: A New Technique for Forecasting.....	18
Technology and Urban Transportation: Environmental Quality Considerations.....	32
Technology Assessment--The Proceedings of Seminar Series.....	30
Transportation Predictive Procedures: Commercial and General Aviation.....	20
Transportation Predictive Procedures: Highway Travel.....	20
Transportation Predictive Procedures: Summary Report.....	20
The Traverse City Affiliation in Extended Care.....	24
Traverse City Area Transportation Study, Draft One.....	32
The Treatment of Industrial Wastes.....	9
The Universities and Environmental Quality--Commitment to Problem Focused Education.....	14
Urban Area Water Consumption: Analysis and Projections.....	13
Water: Solutions to a Problem of Supply and Demand.....	12
Water, The Vital Essence.....	9
The Water Crisis.....	11
Water is Everybody's Business; The Chemistry of Water Purification.....	9
West Virginia Travel and Tourism Study--The Potential Market...	28
Working Papers and Regional Project Proposals for Early Action Program, #3: Public Facilities and Services for Economic Development, Developmental Airports.....	7



WORKING PAPERS

1. Sidney C. Sufrin, "Reflections on Evolving Competitive Aspects in Major Industries," Oct. 1969, 74 pages.
2. M. Lynn Spruill, "A Scoring System to Aid in Evaluating a Large Number of Proposed Public Works Projects by a Federal Agency," Oct. 1969, 17 pages.
3. John D. Ludlow, "The Delphi Method: A Systems Approach to the Utilization of Experts in Technological and Environmental Forecasting," Mar. 1970, 52 pages.
- 4.* Claude R. Martin, "What Consumers of Fashion Want to Know," June 1970, 20 pages.
- 5.* Sidney C. Sufrin, H. Paul Root, Roger L. Wright, and Fred R. Kaen, "Performance Issues of the Automobile Industry," Sept. 1970, 186 pages.
6. James R. Taylor, "Management Experience with Applications of Multidimensional Scaling Methods," Sept. 1970, 27 pages.
- 7.* Daryl Winn, "Profitability and Industry Concentration," Sept. 1970, 102 pages.
- 8.* Joseph W. Newman and Richard Staelin, "Why Differences in Buying Time? A Multivariate Approach," Oct. 1970, 20 pages.
- 9.* Claude R. Martin, "The Contribution of the Professional Buyer to the Success or Failure of a Store," Oct. 1970, 20 pages.

* Copies are no longer available.

10. James R. Taylor, "An Empirical Comparison of Similarity and Preference Judgments in a Unidimensional Context," Oct. 1970, 44 pages.
- 11.* H. O. Helmers, "A Marketing Rationale for the Distribution of Automobiles," Nov. 1970, 115 pages.
12. Merwin H. Waterman, "Global Capital Markets," Nov. 1970, 35 pages.
13. Claude R. Martin, "The Theory of Double Jeopardy and Its Contribution to Understanding Consumer Behavior," Nov. 1970, 27 pages.
- *
 14. Patricia Braden and H. Paul Root, "A Study of the Sources and Uses of Information in the Development of Minority Enterprise--A Proposal for Research on Entrepreneurship," Dec. 1970, 28 pages.
 15. Andrew M. McCosh, "Program Auditing," Dec. 1970, 21 pages.
 16. Kenneth O. Cogger, "Time Series Forecasting Procedures for an Economic Simulation Model," Dec. 1970, 36 pages.
 17. James T. Godfrey and W. Allen Spivey, "Models for Cash Flow Estimation in Capital Budgeting," Dec. 1970, 33 pages.
 18. W. Allen Spivey, "Optimization in Complex Management Systems," Dec. 1970, 27 pages.
 19. Claude R. Martin, "Support for Women's Lib: Management Performance," Jan. 1971, 19 pages.
 20. Donald G. Simonson, "Innovations in the Economics of Project Investment," Jan. 1971, 57 pages.
 21. Donn C. Achtenberg and William J. Wroblewski, "Corporate Financial Modeling: Systems Analysis in Action," Jan. 1971, 26 pages.

* Copies are no longer available.

- 22.* John D. Ludlow, "Sea Grant Delphi Exercises: Techniques for Utilizing Informed Judgments of a Multidisciplinary Team of Researchers," Jan. 1971, 84 pages.
23. Ross Wilhelm, "The Spanish in Nova Scotia in the XVI Century-- A Hint in the Oak Island Treasure Mystery," Feb. 1971, 40 pages.
- 24.* Charles N. Davisson and Herbert F. Taggart, "Financial and Operating Characteristics of Automobile Dealers and the Franchise System," Feb. 1971, 243 pages.
25. H. Paul Root, "Market Power, Product Planning, and Motivation," Feb. 1971, 22 pages.
26. H. Paul Root and Horst Sylvester, "Competition and Consumer Alternatives," Feb. 1971, 21 pages.
- 27.* Dick A. Leabo, "Stepwise Regression Analysis Applied to Regional Economic Research," Feb. 1971, 20 pages.
28. M. J. Karson and W. J. Wroblewski, "Some New Statistical Methods for Analyzing Incomplete Brand Preference Data," Mar. 1971, 25 pages.
- 29.* Thomas C. Kinnear and James R. Taylor, "Multivariate Methods in Marketing Research: A Further Attempt at Classification," Mar. 1971, 11 pages.
30. W. Allen Spivey, "A Deductive Approach to Linear Optimization," Mar. 1971, 74 pages.
31. Neal Campbell and Cyrus K. Motlagh, "A Stochastic Model of the National Political System in the United States," Mar. 1971, 39 pages.
32. H. Paul Root, "Implementation of Risk Analysis Models for the Management of Product Innovation," Mar. 1971, 62 pages.

* Copies are no longer available.

33. William K. Hall, "The Utilization of Linear Optimization Models in Adaptive Planning and Control," Mar. 1971, 21 pages.
34. William K. Hall, "The Determination of Optimal Customer Selection and Allocation Policies for Finite Queues in Parallel," Mar. 1971, 22 pages.
35. John D. Ludlow and Patricia L. Braden, "Socioeconomic Development in the Grand Traverse Bay Area," Apr. 1971, 59 pages.
36. Cyrus K. Motlagh, "Evaluation of Input-Output Analysis as a Tool for the Study of Economic Structure of the Grand Traverse Bay Area," Apr. 1971, 30 pages.
37. Raymond E. Hill and Edgar A. Pessemier, "Multidimensional and Unidimensional Metric Scaling of Preference for Job Descriptions," Apr. 1971, 60 pages.
38. H. Paul Root and J. E. Klompmaker, "A Microanalytic Sales Forecasting Model for New Industrial Products," Apr. 1971, 41 pages.
39. Dr. Ing. Bruno Hake, "Concentration and Competition in the European Automobile Industry," May 1971, 28 pages.
40. Horst Sylvester, "New and Used Cars as Consumer Alternatives," May 1971, 31 pages.
41. Patricia L. Braden, "Socioeconomic Data Book, An Index of Data on Michigan's Grand Traverse Bay Area," June 1971, 99 pages.

* Copies are no longer available.

33. William K. Hall, "The Utilization of Linear Optimization Models in Adaptive Planning and Control," Mar. 1971, 21 pages.
34. William K. Hall, "The Determination of Optimal Customer Selection and Allocation Policies for Finite Queues in Parallel," Mar. 1971, 22 pages.
35. John D. Ludlow and Patricia L. Braden, "Socioeconomic Development in the Grand Traverse Bay Area," Apr. 1971, 59 pages.
36. Cyrus K. Motlagh, "Evaluation of Input-Output Analysis as a Tool for the Study of Economic Structure of the Grand Traverse Bay Area," Apr. 1971, 30 pages.
37. Raymond E. Hill and Edgar A. Pessemier, "Multidimensional and Unidimensional Metric Scaling of Preference for Job Descriptions," Apr. 1971, 60 pages.
38. H. Paul Root and J. E. Klompaker, "A Microanalytic Sales Forecasting Model for New Industrial Products," Apr. 1971, 41 pages.
39. Dr. Ing. Bruno Hake, "Concentration and Competition in the European Automobile Industry," May 1971, 28 pages.
40. Horst Sylvester, "New and Used Cars as Consumer Alternatives," May 1971, 31 pages.
41. Patricia L. Braden, "Socioeconomic Data Book, An Index of Data on Michigan's Grand Traverse Bay Area," June 1971, 99 pages.

* Copies are no longer available.

- *
22. John D. Ludlow, "Sea Grant Delphi Exercises: Techniques for Utilizing Informed Judgments of a Multidisciplinary Team of Researchers," Jan. 1971, 84 pages.
23. Ross Wilhelm, "The Spanish in Nova Scotia in the XVI Century-- A Hint in the Oak Island Treasure Mystery," Feb. 1971, 40 pages.
- 24.* Charles N. Davisson and Herbert F. Taggart, "Financial and Operating Characteristics of Automobile Dealers and the Franchise System," Feb. 1971, 243 pages.
25. H. Paul Root, "Market Power, Product Planning, and Motivation," Feb. 1971, 22 pages.
26. H. Paul Root and Horst Sylvester, "Competition and Consumer Alternatives," Feb. 1971, 21 pages.
- *
27. Dick A. Leabo, "Stepwise Regression Analysis Applied to Regional Economic Research," Feb. 1971, 20 pages.
28. M. J. Karson and W. J. Wroblewski, "Some New Statistical Methods for Analyzing Incomplete Brand Preference Data," Mar. 1971, 25 pages.
- *
29. Thomas C. Kinnear and James R. Taylor, "Multivariate Methods in Marketing Research: A Further Attempt at Classification," Mar. 1971, 11 pages.
30. W. Allen Spivey, "A Deductive Approach to Linear Optimization," Mar. 1971, 74 pages.
31. Neal Campbell and Cyrus K. Motlagh, "A Stochastic Model of the National Political System in the United States," Mar. 1971, 39 pages.
32. H. Paul Root, "Implementation of Risk Analysis Models for the Management of Product Innovation," Mar. 1971, 62 pages.

* Copies are no longer available.

10. James R. Taylor, "An Empirical Comparison of Similarity and Preference Judgments in a Unidimensional Context," Oct. 1970, 44 pages.
- 11.* H. O. Helmers, "A Marketing Rationale for the Distribution of Automobiles," Nov. 1970, 115 pages.
12. Merwin H. Waterman, "Global Capital Markets," Nov. 1970, 35 pages.
13. Claude R. Martin, "The Theory of Double Jeopardy and Its Contribution to Understanding Consumer Behavior," Nov. 1970, 27 pages.
- *
14. Patricia Braden and H. Paul Root, "A Study of the Sources and Uses of Information in the Development of Minority Enterprise--A Proposal for Research on Entrepreneurship," Dec. 1970, 28 pages.
15. Andrew M. McCosh, "Program Auditing," Dec. 1970, 21 pages.
16. Kenneth O. Cogger, "Time Series Forecasting Procedures for an Economic Simulation Model," Dec. 1970, 36 pages.
17. James T. Godfrey and W. Allen Spivey, "Models for Cash Flow Estimation in Capital Budgeting," Dec. 1970, 33 pages.
18. W. Allen Spivey, "Optimization in Complex Management Systems," Dec. 1970, 27 pages.
19. Claude R. Martin, "Support for Women's Lib: Management Performance," Jan. 1971, 19 pages.
20. Donald G. Simonson, "Innovations in the Economics of Project Investment," Jan. 1971, 57 pages.
21. Donn C. Achtenberg and William J. Wroblewski, "Corporate Financial Modeling: Systems Analysis in Action," Jan. 1971, 26 pages.

* Copies are no longer available.

WORKING PAPERS

1. Sidney C. Sufrin, "Reflections on Evolving Competitive Aspects in Major Industries," Oct. 1969, 74 pages.
2. M. Lynn Spruill, "A Scoring System to Aid in Evaluating a Large Number of Proposed Public Works Projects by a Federal Agency," Oct. 1969, 17 pages.
3. John D. Ludlow, "The Delphi Method: A Systems Approach to the Utilization of Experts in Technological and Environmental Forecasting," Mar. 1970, 52 pages.
- 4.* Claude R. Martin, "What Consumers of Fashion Want to Know," June 1970, 20 pages.
- 5.* Sidney C. Sufrin, H. Paul Root, Roger L. Wright, and Fred R. Kaen, "Performance Issues of the Automobile Industry," Sept. 1970, 186 pages.
6. James R. Taylor, "Management Experience with Applications of Multidimensional Scaling Methods," Sept. 1970, 27 pages.
- 7.* Daryl Winn, "Profitability and Industry Concentration," Sept. 1970, 102 pages.
- 8.* Joseph W. Newman and Richard Staelin, "Why Differences in Buying Time? A Multivariate Approach," Oct. 1970, 20 pages.
- 9.* Claude R. Martin, "The Contribution of the Professional Buyer to the Success or Failure of a Store," Oct. 1970, 20 pages.

* Copies are no longer available.



INDEX OF TITLES--Continued

A Survey of Multi-County Cooperation in North Carolina.....	24
Systematic Procedures for Population Estimates and Projections for North Carolina.....	16
Systematic Use of Expert Opinions.....	19
The Technological Progress Function: A New Technique for Forecasting.....	18
Technology and Urban Transportation: Environmental Quality Considerations.....	32
Technology Assessment--The Proceedings of Seminar Series.....	30
Transportation Predictive Procedures: Commercial and General Aviation.....	20
Transportation Predictive Procedures: Highway Travel.....	20
Transportation Predictive Procedures: Summary Report.....	20
The Traverse City Affiliation in Extended Care.....	24
Traverse City Area Transportation Study, Draft One.....	32
The Treatment of Industrial Wastes.....	9
The Universities and Environmental Quality--Commitment to Problem Focused Education.....	14
Urban Area Water Consumption: Analysis and Projections.....	13
Water: Solutions to a Problem of Supply and Demand.....	12
Water, The Vital Essence.....	9
The Water Crisis.....	11
Water is Everybody's Business; The Chemistry of Water Purification.....	9
West Virginia Travel and Tourism Study--The Potential Market...	28
Working Papers and Regional Project Proposals for Early Action Program, #3: Public Facilities and Services for Economic Development, Developmental Airports.....	7

INDEX OF TITLES--Continued

Prospects of Technological Progress.....	18
R & D and Small-Company Growth: A Statistical Review and Company Case Studies.....	30
Recreation and Open Space.....	15
Recreation Master Plan, Eden, North Carolina.....	29
Regional and Local Land Use Planning.....	13
The Relationship among Population, Income and Retail Sales in SMSAs, 1952-66.....	5
Research for Regional Planning.....	26
A Research Study of Hotel Requirements in Hong Kong.....	28
Saginaw County--Land Use Analysis.....	13
Sea Grant Planning Seminars: Ann Arbor--May 11-13, 1970 and Traverse City--May 25-27, 1970.....	23
Small Area Applications of Input/Output.....	20
Social Technology.....	19
Some Relevant Considerations for Metropolitan Fiscal Policy....	7
State and County Projections: A Progress Report of the Regional Forecasting Project.....	18
State of Rhode Island Public Rights-of-Way to the Shore.....	12
The Structure of Development.....	5
The Structure of the U.S. Economy.....	5
A Study of Nonresident Landowners of Ten or More Acres in Antrim and Kalkaska Counties, Michigan.....	27
A Study of Technology Assessment.....	31
A Suggested Model for the Management of a Sea Grant In- stitutional Program.....	22

INDEX OF TITLES--Continued

Models for New-Product Decisions.....	21
Natural Resources: Energy, Water and River Basin Development.....	30
A New Product Growth Model for Consumer Durables.....	16
New York State's Central Social Environment Study.....	24
1970 Site Selection Handbook--Vol. II.....	6
Northern Great Lakes Region Multi-Soil Conservation Districts' Framework Program for the Grand Traverse Bay, Broad Program Area--Michigan No. 10.....	12
Observations on the Big Rock Nuclear Power Plant: Cooling Water Discharge to Lake Michigan.....	14
1001 Questions Answered about Water Resources.....	10
Organized Industrial Districts: A Tool for Community Development.....	25
Outdoor Recreation Planning in Michigan by a Systems Analysis Approach.....	28
An Overview of the Economic Potential of Sport and Commercial Fisheries in the Upper Great Lakes Region.....	2
Perspectives for the 70's and 80's: Tomorrow's Problems Confronting Today's Management.....	25
Pesticides and Pollution.....	11
Pesticides in the Grand Traverse Bay Region of Northern Lake Michigan.....	11
Population Mobility: Focuses on Texas.....	27
A Preliminary Report on the Economic Impact of Research and Development Budget Decrements.....	3
Prologue for Accelerated Growth of Economy.....	6
The Proposed Sleeping Bear Dunes National Lakeshore--An Assessment of the Economic Impact.....	1

INDEX OF TITLES--Continued

Input-Output Transactions: 1961.....	21
Interim Zoning and Subdivision.....	25
Lake Michigan Basin Study: Michigan Section.....	11
Land Use Analysis.....	12
Land Utilization and Marketability Study, Central Business District Urban Renewal Project, Traverse City, Michigan....	6
The Main II System (HIT-413).....	19
The Main II System User's Manual (HIT-413).....	19
Managing the Natural Environment.....	10
The Master Plan Summary, Town of Peestenkill, Rensselaer County, New York.....	23
Michigan in the 1970's: An Economic Forecast.....	4
The Michigan Manpower Study--Phase I.....	27
The Michigan Manpower Study--Final Report.....	27
Michigan Port Hinterlands as Determined by Inland Carrier Class Rates.....	3
Michigan's Chemical Industry.....	5
Michigan's Commerce: Domestic and International.....	4
Michigan's Economic Past: Basis for Prosperity.....	2
Michigan's Future: Its Population and Its Economy.....	2
Michigan's Manpower Resources.....	4
Michigan's Planning and Development Regions, Delineation Criteria and Comments.....	25
Michigan's Recreation Future.....	29
Minnesota Tourism '68: A Market Analysis.....	29

INDEX OF TITLES--Continued

Eutrophication: Causes, Consequences, Correctives.....	10
Evaluating Signals of Technological Change.....	17
Export-Employment Multiplier Analysis of a Major Industrial Community.....	2
Federal Water Resources Research Program for Fiscal Year 1970.....	14
Forecasting Municipal Water Requirements.....	19
Forecasting Water Demand, An Inter- and Intra-Community Study.....	13
Fourth Semi-Annual Report--Syracuse/NASA Program for the Period July 1, 1969-December 31, 1969: Multidisciplinary Studies in Management and Development Programs in the Public Sector.....	16
Framework for a Coherent Policy on Urban Land.....	14
The Georgia Travel Industry: 1960-1968.....	28
Greater Cleveland Goals and Programs.....	26
Growth Centers and Their Potentials in the Upper Great Lakes Region.....	7
Guide To Economic Projections and Forecasts.....	18
The Industrial Impact of the Interstate Highway System: An Input-Output Analysis.....	32
Industrial Location as a Factor in Regional Economic Development.....	7
Industries Suited for the Upper Great Lakes Region.....	1
Inland Port Facilities and Economic Growth.....	1
Input-Output Analysis and Transportation Planning.....	32
Input-Output Economics.....	19
An Input-Output Linear Programming Analysis of California Water Requirements.....	19
Input-Output Structure of the U.S. Economy: 1963.....	19

INDEX OF TITLES--Continued

Demographic Study of Wyoming: Population in Transition.....	27
Development Standards.....	9
A Dynamic Interregional Input-Output Programming Model of the California and Western States Water Economy.....	16
A Dynamic Model of Water Quality Management Decision-Making....	20
Econometric Model of Michigan (1960).....	21
Econometric Model of Michigan (1965).....	7
Economic and Social Impact of Recreation at Reclamation Reservoirs.....	29
Economic Atlas, Upper Great Lakes Basin.....	7
Economic Base Report (Ann Arbor).....	3
The Economic Effects of Disarmament.....	5
Economic Forecasts for the City of Laguna Beach, California-- General Plan Program.....	2
Economic Growth in the Upper Great Lakes Region, 1950-1967....	3
Economic Impact of the Proposed Cumberland Island National Seashore.....	4
The Economics of Technological Change.....	2
Economic Studies of Outdoor Recreation.....	29
The Economic Value of Water in Industrial Uses (A Continuation).....	16
Effective Use of the Sea.....	15
Engineering Aspects of Thermal Pollution; Biological Aspects of Thermal Pollution.....	12
The Environmental Handbook.....	10
Estimates and Projections of Economic and Demographic Characteristics--Saginaw County, Michigan.....	6

INDEX OF TITLES

Advances in Water Quality Improvement.....	11
Alternative Regional Development Patterns.....	26
An Analysis of the Economic Feasibility of Expanding the Greenville Port Facilities.....	6
Analysis of the Future: The Delphi Method.....	18
Analysis of Water and Water-Related Research Requirements in the Great Lakes Region.....	23
Analytical Capabilities for the North Carolina State Planning Process: Introduction and Summary.....	23
Bangor, Michigan Comprehensive Plan.....	24
Bay Shoreline.....	9
Bureaucratic Structure and Decision-making.....	17
A Case Study Using Forecasting as a Decision Making Aid.....	17
Colorado Ski and Winter Recreation Statistics, 1968.....	28
Community and Area Planning and Development in the Northwest Michigan Development District.....	5
Completion Report: Planning Research and Analysis Project.....	25
Comprehensive Economic Cost Study of Air Pollution Control Costs for Selected Industries and Selected Regions.....	10
Comprehensive Water Supply, Sewerage, Solid Waste and Air Pollution Control Plans.....	14
The Contributions of the Ports of Virginia to the Economy of the Commonwealth.....	3
Controlling Pollution: The Economics of a Cleaner America.....	11
The Delphi Method: A Systems Approach to the Utilization of Experts in Technological and Environmental Forecasting...	20
The Delphi Method, II: Use of Self-Ratings to Improve Group Estimates.....	17



INDEX OF AUTHORS--Continued

Vertrees, Robert C., 27
Vicksburg (Miss.) District Corps
of Engineers. See Mississippi
State University, 6
Vines, William R., 15

Walker, Junius F., 20
Walsh, Donald Eugene, 22
Warshaw, Martin R., 4
Wilson, A.G., 26

INDEX OF AUTHORS--Continued

- Cyrus Um. Rice Division, NUS Corporation, Pittsburgh, Pennsylvania. See Bramer, 16
- Ross, Ivan, 29
- Rudelius, William, 29
- Herman D. Ruth and Associates, City and Regional Planning Consultants, Berkeley, California, 13
- Saginaw County Metropolitan Planning Commission, Office of the County Planner, 13, 25
- Saginaw County Metropolitan Planning Commission. See Real Estate Research Corporation, 6
- Santa Clara County Planning Department, 25
- Saunders, Robert J., 13
- Schmidt, J. William, 28
- Seeburger, D. James, 14
- David B. Smith Engineers, Inc., 14
- Larry Smith and Co., Inc., Real Estate Consultants, 6
- Smith, William J.J., 30
- Southwestern Pennsylvania Regional Planning Commission, Pittsburgh, Pennsylvania, 26
- Spivey, W. Allen, 4
- State Resource Planning Division. See Bronder, 2; Bronder and Koval, 2; Michigan Department of Conservation, 29
- State Resource Planning Program. See Edwards, 3; Hazard, 4; Kievat, 4
- Steinhart, John S. See U.S. Executive Office of the President, second entry, 14
- Suits, Daniel B., 7, 21
- Sweet, David C. See Battelle Memorial Institute, 1
- Tri-State Transportation Commission, New York. See DeTurk, 10
- TRW Incorporated, Systems Group, 26
- University of Houston. See Brown, 2
- University of Virginia. See Darnton, 3
- University of Wyoming, Department of Economic Planning and Development. See Morgan, 27
- Upper Great Lakes Regional Commission, 7
- Urban Land Research Analysts Corporation, Lexington, Massachusetts, 7, 14
- U.S., Agency for International Development, 30
- U.S., Congress, House of Representatives, Committee on Science and Astronautics, 31
- U.S., Department of Commerce, 21
- U.S., Department of Commerce --Economic Development Administration, 7
- Office of Technical Services, Area Development Division. See Pasma, 25
- U.S., Department of Health, Education and Welfare, National Air Pollution Control Administration. See Fogel, 10
- U.S., Department of the Interior --National Park Service. See Keeling, et al., 4
- Office of Water Resources Research. See Bramer, 16; Hittman Associates, Inc., 19; Males, 20; Committee of Institutional Cooperation, 23
- U.S., Executive Office of the President, Office of Science and Technology, 14
- U.S., President's Science Advisory Committee, 15
- U.S., Department of Transportation, Office of the Secretary of Transportation, 32

INDEX OF AUTHORS--Continued

- Milliken, J. Gordon, 29
Minnesota State Planning Agency.
 See Pennington, 29
Mississippi State University,
 College of Business and
 Industry, Division of Re-
 search, 6
Moore, H.G., 1
Morgan, William E., 27
Motz, Donald J., 16
- National Academy of Engineering,
 Committee of Public Engi-
 neering Policy. See U.S.,
 Congress, House of Representa-
 tives, Committee of Science and
 Astronautics, 31
National Air Pollution Control
 Administration. See Fogel, 10
National Industrial Conference
 Board, 25. See also Smith, 30
National Park Service. See
 Keeling, et al., 4
National Research Council,
 Division of Biology and
 Agriculture. See
 Eutrophication, 10
Nedved, Thomas K., 11
New York State Office of Planning
 Coordination. See Rensselaer
 County Department of Planning
 and Promotion, 12; Russell D.
 Bailey and Associates, 23;
 McDevitt, 24
Nikolaieff, George A., 11
North Carolina, Department of
 Conservation and Development
 Division of Community Planning,
 29
North Carolina State Department
 of Administration. See Benrud,
 16; Analytical Capabilities for
 the North Carolina State
 Planning Process, 23; Keiser,
 24
- Northwest Michigan Development District
 and the Office of Community
 Planning. See Michigan, Depart-
 ment of Commerce, 5
Northwest Michigan Economic Develop-
 ment District Commission, Traverse
 City, Michigan, 6
- Office of Community Planning. See
 Michigan, Department of Com-
 merce, 5
Office of Economic Expansion. See
 Bronder, 2; Bronder and Koval,
 2; Suits, 7; Michigan, Depart-
 ment of Conservation, 29
Office of Water Resources Research.
 See Bramer, 16; Hittman Associates,
 Inc., 19; Males, 20; Committee
 of Institutional Cooperation, 23
Outdoor Recreation Resources Review
 Commission, 29
Overman, Michael, 12
- Panel on Oceanography. See U.S.,
 President's Science Advisory
 Committee, 15
Parker, Frank L., 12
Pasma, Theodore K., 25
Peart, Margaret, W., 27
Peden, G. T., Jr., 1
Pennington, Allan L., 29
Pessemier, Edgar A., 21
- The RAND Corporation. See Dalkey,
 17; Downs, 17; Helmer, 18, 19
Real Estate Research Corporation, 6
Rensselaer County Department of
 Planning and Promotion, 12
Research Triangle Institute. See
 Fogel, 10; Analytical Capabili-
 ties for the North Carolina
 State Planning Process, 23
Rhode Island Statewide Comprehensive
 Transportation and Land Use
 Planning Program, Providence,
 Rhode Island, 12

INDEX OF AUTHORS--Continued

- Haber, William, 4
Harris, Curtis C., Jr., 18
Hass, Raymond M., 28
Hazard, John L., 4
Helmer, Olaf, 18, 19
Hittman Associates, Inc.,
 Columbia, Maryland, 19
Hoffenberg, Marvin, 5
Hong Kong Tourist Association.
 See Lam, 28
Hudson Institute. See Ayres, 32

Institute for the Future.
 See Enzer, 17

Kasper, Raphael G., 30
Keeling, William B., 4, 28
Keiser, Sheron Ann, 24
Kievat, Irene M., 4
Koval, John M., 2
Krenkel, Peter A., 12

Lage, Gerald M., 32
Lam, Frank C.K., 28
Lamont, Larry, 5
Wm. S. Lawrence and Associates,
 Inc., 24
League of Women Voters of
 Michigan. See Lake Michigan
 Basin Study, 11
Leontief, Wassily W., 5, 19
Arthur D. Little, Inc. See
 Michigan, Aeronautics Commission
 and Department of Commerce,
 20; Michigan, Department of
 State Highways, Office of Planning,
 Resource Transportation Unit, 20
Liu, Ben-Chieh, 5
Loebs, Stephen F., 24
Lofting, E.M., 19
Long, Larry H., 27
Ludlow, John D., 20

Maggied, Hal S. See Battelle
 Memorial Institute, 1
Maki, Wilbur R., 20

Males, Richard M., 20
McDevitt, Matthew, 24
McGauhey, P.H., 19
Mc Gowan, Thomson, 24
Meiburg, Charles O., 3
Meiklejohn, Norman J. See U.S.,
 Agency for International Develop-
 ment, 30
Mellanby, Kenneth, 11
Mew, H.E., Jr., 29
Michigan, Aeronautics Commission
 and Department of Commerce in
 cooperation with Arthur D.
 Little, Inc., 20
Michigan, Department of Commerce
 --Community Planning Division.
 See Wm. S. Lawrence and
 Associates, Inc., 24
 --Northwest Michigan Develop-
 ment District and Office of
 Community Planning, 5
 --Office of Economic Expansion.
 See Bronder, 2; Bronder and
 Koval, 2; Suits, 7, 21;
 Michigan, Department of
 Conservation, 29
 --State Resource Planning Program,
 20. See also Edwards, 3;
 Hazard, 4; Kievat, 4
Michigan, Department of Conservation,
 Recreation Resource Planning Divi-
 sion, 29. See also Ellis, 28
Michigan, Department of Labor. See
 Battelle Memorial Institute, 27
Michigan, Department of State Highways,
 Office of Planning, Resource
 Transportation Planning Unit in
 cooperation with Arthur D. Little,
 Inc., 20
Michigan, Executive Office of the
 Governor, Bureau of Planning and
 Program Development, Office of
 Planning Coordination, 25
Michigan, Planning Division, 32
Michigan Employment Security Commis-
 sion, Department of Labor. See
 Battelle Memorial Institute, 27

INDEX OF AUTHORS

- Allen, Gerald L., 28
 Ann Arbor Planning Department and
 Planning Commission. See
 Economic Base Report, 3
 Armenakes, A.A., 1
 Association of Bay Area Govern-
 ments, Berkeley, California, 9
 Ayres, Robert U., 32
- Russell D. Bailey and Associates, 23
 Bangor Planning Commission. See
 Wm. S. Lawrence and Associates,
 Inc., 24
 Bargur, Jona, 16
 Barker, Florence P., 27
 Barzelay, Martin E., 16
 Bass, Frank M., 6
 Battelle Memorial Institute
 --Columbus (Ohio) Laboratories,
 1
 --Manpower and Regional Economics
 Division, 27
 --Socio-Economics Research
 Section, 27
 Behrman, Abraham S., 9
 Benrud, C. H., 16
 Besselièvre, Edmund B., 9
 Birmingham-Jefferson County Regional
 Planning Commission, 9
 Blasius, Richard, 3
 Blome, Donald A., 1
 Bramer, Henry C., 16
 Briggs, Peter, 9
 Bright, James R., 17
 Bronder, Leonard D., 2
 Brown, B., 17
 Brown, Byron B., Jr., 2
 Browning, Harley L., 27
 Bulkley, J. W., 23
- Carter, Anne P., 2
 Case Western Reserve University.
See Dean, 3
 Cherniach, Stacie. See U.S.,
 Executive Office of the
 President, second entry, 14
- Chubb, Michael, 2
 Cochran, S., 17
 Committee of Institutional Coopera-
 tion, Council on Economic Growth,
 Technology, and Public Policy, 23
 Conway Research, Inc. See 1970
 Site Selection Handbook, 6
 Creamer, Daniel, 30
 Cunningham, Floyd F., 10
- Dalkey, N., 17
 Daniel, Mann, Johnson, & Mendenhall,
 Consultants, 2
 Darnton, Donald C., 3
 Dean, Burton V., 3
 DeBell, Garret, 10
 DeTurk, Richard S., 10
 Downs, Anthony, 17
 Durston, John H. See U.S., Agency
 for International Development, 30
- Edwards, Dale, 3
 Ellis, J. B., 28
 Engineering Sciences, Inc. See Males,
 20
 Enzer, Selwyn, 17
- Federal Council for Science and Techno-
 logy, Committee on Water Resources
 Research. See U.S., Executive
 Office of the President, 14
 Florida, Area Planning Board of Palm
 Beach County. See David B. Smith,
 Engineers, Inc., 14; Vines, 15
 Floyd, Charles F., 3
 Fogel, M.E., 10
 Fوسفeld, Alan R., 18
- Garman, Cynthia, 23
 Gates, William E., 20
 Gloyna, Earnest F., 11
 Goldman, Marshall I., 11
 Greene, Jeffrey C., 2
 Griffin, John M. See Battelle
 Memorial Institute, 1

TRANSPORTATION

Association of Bay Area Governments, Berkeley, California. Bay Shoreline. See ENVIRONMENT AND NATURAL RESOURCES.

Ayres, Robert U. Technology and Urban Transportation: Environmental Quality Considerations. Croton-on-Hudson, N.Y.: Hudson Institute, Jan., 1968. Vol. I, "Overview." Covers the determination of the set of all possible transportation systems. Gives consideration to a wide range of influencing factors--the systems most appropriate to urban transportation and their technical feasibility in the next decade. Considers factors which determine urban transportation requirements and the most appropriate mix between mass and individual transportation. Vol. II, Parts A and B ("Automotive Propulsion Systems," and "Short-Range Mass Transportation") present a state-of-the-art survey of alternatives to the internal combustion engine for automobiles, buses, and trucks and possible technological solutions to the short-range urban mass transportation problem.

Lage, Gerald M. "The Industrial Impact of the Interstate Highway System: An Input-Output Analysis." Business Papers Series, No. 6. Stillwater, Okla.: College of Business Expansion Service, Oklahoma State University, Nov., 1968. This paper provides an analysis of the industrial impact of the construction of the interstate highway system.

Michigan. Aeronautics Commission and Department of Commerce. Transportation Predictive Procedures: Commercial and General Aviation. See FORECASTING.

Michigan. Department of Commerce. State Resource Planning Program. Transportation Predictive Procedures: Summary Report. See FORECASTING.

Michigan. Department of State Highways. Office of Planning. Resource Transportation Planning Unit. Transportation Predictive Procedures: Highway Travel. See FORECASTING.

_____. Planning Division. Traverse City Area Transportation Study, Draft One. Lansing, Michigan, 1966. A thorough examination of transportation system requirements--current usage and deficiencies and proposals for the future transportation within the Traverse City urban area.

U.S. Department of Transportation. Office of the Secretary of Transportation. Input-Output Analysis and Transportation Planning. Jan., 1969. Distributed by the U.S. Dept. of Commerce, National Bureau of Standards, Clearinghouse for Federal Scientific and Technical Information, PB 191 725.

TECHNOLOGY--Continued

U.S. Congress. House of Representatives. Committee of Science and Astronautics. A Study of Technology Assessment. Report of the Committee of Public Engineering Policy, National Academy of Engineering. Washington, D.C.: Government Printing Office, July, 1969. This study includes an analysis of three separate experiments in technology assessment. The experiments were investigations of methodology, feasibility, and the potential value of technology assessment by groups with varying backgrounds.

TECHNOLOGY

- Ayres, Robert U. Technology and Urban Transportation: Environmental Quality Considerations. See TRANSPORTATION.
- Besselièvre, Edmund B. The Treatment of Industrial Wastes. See ENVIRONMENTAL AND NATURAL RESOURCES.
- Bright, James R. "Evaluating Signals of Technological Change." See FORECASTING.
- Carter, Anne P. "The Economics of Technological Change." See ECONOMICS.
- Dean, Burton V., et al. A Preliminary Report on the Economic Impact of Research and Development Budget Decrements. See ECONOMICS.
- Fusfeld, Alan R. "The Technological Progress Function: A New Technique for Forecasting." See FORECASTING.
- Kasper, Raphael G., ed. Technology Assessment--The Proceedings of a Seminar Series. Apr., 1969. Distributed by the U.S. Dept. of Commerce, National Bureau of Standards, Clearinghouse for Federal Scientific and Technical Information, N69-40301-305. A collection of papers given at the Program Policy Studies in Science and Technology, George Washington University, on the concept of technology assessment. The objectives to understand and appraise the results of technological progress.
- Ludlow, John D. "The Delphi Method: A Systems Approach to the Utilization of Experts in Technological and Environmental Forecasting." See FORECASTING.
- Smith, William J. J., and Creamer, Daniel. R&D and Small-Company Growth: A Statistical Review and Company Case Studies. Studies in Business Economics No. 102. New York: National Industrial Conference Board, Inc., 1968. The report seeks to shed needed light on the economic effects of Research and Development on small-company operations, the conditions for the establishment and expansion of permanent small-company research and development programs, the purpose and scope of these programs, and the more important constraints on the utilization of research and development output.
- U.S. Agency for International Development. Natural Resources: Energy, Water and River Basin Development. Vol. I of Science, Technology, and Development. Series of U.S. papers prepared for the United Nations Conference on the Application of Science and Technology for the Benefit of the Less Developed Areas. John H. Durston and Norman J. Meiklejohn, eds. Washington, D.C.: Government Printing Office, 1962.

RECREATION AND TOURISM--Continued

Michigan. Department of Conservation. Recreation Resource Planning Division. Michigan's Recreation Future. Prepared with the assistance of the Mich. Dept. of Commerce, Office of Economic Expansion, State Resource Planning Division, Lansing, Michigan, Sept., 1966. A current statement from Michigan's continuing outdoor recreation plan.

Milliken, J. Gordon, and Mew, H. E., Jr. Economic and Social Impact of Recreation at Reclamation Reservoirs. Denver, Colo.: Industrial Economics Division, Denver Research Institute, University of Denver, Mar., 1969. Distributed by the U.S. Dept. of Commerce, National Bureau of Standards, Clearinghouse for Federal Scientific and Technical Information, PB 188 544. A preliminary exploration of the economic and social impacts of recreation opportunities resulting from reservoir construction.

North Carolina. Department of Conservation and Development Division of Community Planning. Recreation Master Plan, Eden, North Carolina. N.C. P-54. Sept., 1969. Distributed by the U.S. Dept. of Commerce, National Bureau of Standards, Clearinghouse for Federal Scientific and Technical Information, PB 189 809. The study determines the existing recreation facilities available to the people and the city's social, economic, and physical characteristics. Evaluated with respect to both present and future recreation requirements and recommendations.

Outdoor Recreation Resources Review Commission. Economic Studies of Outdoor Recreation. ORRC Study Report 24. Prepared by the Commission staff, University of California, Berkeley, California. Washington, D.C.: Government Printing Office, 1962. The four economic studies of outdoor recreation making up this study represent different applications of economics to several significant problems of outdoor recreation--those that confront legislators, policymakers, and planners in the field of outdoor recreation.

Pennington, Allan L.; Ross, Ivan; and Rudelius, William. Minnesota Tourism '68: A Market Analysis. School of Business Administration, University of Minnesota, Minneapolis, Minnesota. St. Paul, Minn.: Minnesota State Planning Agency, Jan., 1969. The study concerns the promotion and improvement of Minnesota's recreational product in order to attract more vacationers.

RECREATION AND TOURISM

- Allen, Gerald L. Colorado Ski and Winter Recreation Statistics, 1968. Boulder, Colo.: Business Research Division, Graduate School of Business Administration, University of Colorado, 1968. Describes the ski industry in Colorado, assesses visits to major Colorado recreation areas, and reflects on the economic effects of the industry.
- Association of Bay Area Governments, Berkeley, California. Bay Shoreline. See ENVIRONMENT AND NATURAL RESOURCES.
- Chubb, Michael, and Greene, Jeffrey C. An Overview of the Economic Potential of Sport and Commercial Fisheries in the Upper Great Lakes Region. See ECONOMICS.
- Ellis, J. B. Outdoor Recreation Planning in Michigan by a Systems Analysis Approach. Part I: A Manual for "Program RECSYS." Technical Report No. 1. Prepared for the Recreation Resource Planning Division, Mich. Dept. of Conservation, Lansing, Michigan, May, 1966. A report on the development and use of a county-to-county systems model and its application in analyzing demand for various activities.
- Hass, Raymond M., and Schmidt, J. William. West Virginia Travel and Tourism Study--The Potential Market. West Virginia Economic Development Series No. 3. Morgantown, W. Va.: College of Commerce, Bureau of Business Research, and the College of Engineering, West Virginia University, Nov., 1964. Measures and analyzes the potential of areas outside of West Virginia and the needs and desires in the state for tourism.
- Keeling, William B. The Georgia Travel Industry: 1960-1968. Travel Research Study No. 11. Prepared for the Tourist Division, Georgia Department of Industry and Trade, Athens, Georgia, 1969. Athens, Ga.: Division of Research, College of Business Administration, University of Georgia. A description of the Georgia travel industry and its economic impact on the state.
- Lam, Frank C. K. A Research Study of Hotel Requirements in Hong Kong. Research and Statistics Department, Hong Kong Tourist Association, Nov., 1969. This study presents an analysis of the total accommodations available in Hong Kong. It attempts to assess future requirements in the light of existing forecasts of visitor traffic and other factors affecting hotel occupancy. Also examines other aspects of the hotel situation in Hong Kong--seasonality and pattern of demand.

POPULATION

- Battelle Memorial Institute. Socio-Economics Research Section. The Michigan Manpower Study--Phase I. Lansing, Mich.: Michigan Employment Security Commission, Dept. of Labor, May, 1966. Presents the first phase of an analysis of the characteristics of Michigan's labor force in the next 15 years; 32 of the 51 specific occupations to be included in the study are analyzed.
- _____. Manpower and Regional Economics Division. The Michigan Manpower Study--Final Report. Lansing, Mich.: Michigan Employment Security Commission, Dept. of Labor, Nov., 1966. The final report on 51 occupations in Michigan with projections of the labor force for the next 15 years.
- Benrud, C. H. Systematic Procedures for Population Estimates and Projections for North Carolina. See FORECASTING.
- Browning, Harley L., and Long, Larry H., eds. Population Mobility: Focuses on Texas. Austin, Tex.: Bureau of Business Research, University of Texas, 1968. The monograph concerns population mobility and redistribution of population in Texas. Topics include interstate migration, patterns of migration for short periods, migration and mobility for urban areas with socioeconomic characteristics of movers, the process of urbanization, and population decline in 71 Texas counties.
- Kievat, Irene M. Michigan's Manpower Resources. See ECONOMICS.
- Liu, Ben-Chieh. "The Relationship among Population, Income and Retail Sales in SMSAs, 1952-66." See ECONOMICS.
- Morgan, William E.; Peart, Margaret W.; and Barker, Florence P. Demographic Study of Wyoming: Population in Transition. Prepared for the Wyoming Department of Economic Planning and Development, Division of Business and Economic Research, College of Commerce and Industry, University of Wyoming, Laramie, Wyoming, Dec., 1969. Contains a survey of historical demographic and related economic and social trends; analysis of historical trends; and population projection by five-year intervals for the state and for each county using several analysis and forecasting methodologies.
- Real Estate Research Corporation. Estimates and Projections of Economic and Demographic Characteristics--Saginaw County, Michigan. See ECONOMICS.
- Vertrees, Robert C. "A Study of Nonresident Landowners of Ten or More Acres in Antrim and Kalkaska Counties, Michigan." Unpublished M.S. dissertation, Department of Resource Development, Michigan State University, 1967.

PLANNING--Continued

David B. Smith Engineers, Inc. Comprehensive Water Supply, Sewerage, Solid Waste and Air Pollution Control Plans. See ENVIRONMENT AND NATURAL RESOURCES.

Southwestern Pennsylvania Regional Planning Commission, Pittsburgh, Pennsylvania. Alternative Regional Development Patterns. Aug., 1965. Distributed by the U.S. Dept. of Commerce, National Bureau of Standards, Clearinghouse for Federal Scientific and Technical Information, PB 184 388. Analyzes factors that influence rate and direction of land development. Suggests goals and development principles for future growth. Presents the implications of continuing present development trends or goals and the implications of alternative development patterns. Evaluates alternatives in terms of goals.

TRW Incorporated. Systems Group. "Greater Cleveland Goals and Programs." Prepared for the Greater Cleveland Growth Association and presented to a group of more than 100 community representatives in Cleveland, Ohio, Sept. 21, 1968. This study was conducted with the primary objective of suggesting community roles for the Growth Association.

Urban Land Research Analysts Corporation, Lexington, Massachusetts. Framework for Coherent Policy on Urban Land. See ENVIRONMENT AND NATURAL RESOURCES.

U.S. Department of Commerce. Economic Development Administration. Industrial Location as a Factor in Regional Economic Development. See ECONOMICS.

U.S. Department of Transportation. Office of the Secretary of Transportation. Input-Output Analysis and Transportation Planning. See TRANSPORTATION.

U.S. Executive Office of the President. Office of Science and Technology. The Universities and Environmental Quality--Commitment to Problem Focused Education. See ENVIRONMENT AND NATURAL RESOURCES.

Vines, William R. Recreation and Open Space. See ENVIRONMENT AND NATURAL RESOURCES.

Wilson, A. G. "Research for Regional Planning." Regional Studies, III (Apr., 1969). The paper is concerned with analysis of cities and regions on the one hand, and the process of planning on the other.

PLANNING--Continued

Michigan. Executive Office of the Governor. Bureau of Planning and Program Development. Office of Planning Coordination. Michigan's Planning and Development Regions, Delineation Criteria and Comments. Information Bulletin No. 3. Lansing, Michigan, Mar., 1968. A list of state planning and development regions--region 10 is the Sea Grant area.

Mississippi State University. College of Business and Industry. Division of Research. An Analysis of the Economic Feasibility of Expanding the Greenville Port Facilities. See ECONOMICS.

National Industrial Conference Board. Perspectives for the 70's and 80's: Tomorrow's Problems Confronting Today's Management. New York: National Industrial Conference Board, 1970. Forecast of the likely problems of the 1970s and 1980s by a panel of experts using the Delphi technique. Also presents the result of a public opinion survey to determine the public awareness of such problems.

"1970 Site Selection Handbook--Vol. II." See ECONOMICS.

Northern Great Lakes Region Multi-Soil Conservation Districts' Framework Program for the Grand Traverse Bay, Broad Program Area--Michigan No. 10. See ENVIRONMENT AND NATURAL RESOURCES.

Pasma, Theodore K. Organized Industrial Districts: A Tool for Community Development. Prepared for the Area Development Division, Office of Technical Services, U.S. Dept. of Commerce, June, 1954. Washington, D.C.: Government Printing Office, 1954. This guidebook describes the establishment of planned communities of industry counterparts of modern residential subdivisions.

Saginaw County Metropolitan Planning Commission. Office of the County Planner. Interim Zoning and Subdivision. Mich. P-269. Saginaw Metropolitan Area Transportation Study, Work Paper--Information, July, 1969. Distributed by the U.S. Dept. of Commerce, National Bureau of Standards, Clearinghouse for Federal Scientific and Technical Information, No. 190 067. This narrative provides a framework within which a local zoning ordinance or subdivision control ordinance may be constructed or amended. A model zoning ordinance is presented and a state model subdivision control ordinance is recommended.

Santa Clara County Planning Department. Completion Report: Planning Research and Analysis Project. California P-148. Distributed by the U.S. Dept. of Commerce, National Bureau of Standards, Clearinghouse for Federal Scientific and Technical Information, PB 184 156. Describes the development and use of an expandable planning data file consisting of land use data and census data for every parcel of land in Santa Clara County. Two land use inventories were conducted, one in 1965 and the other in 1967.

PLANNING--Continued

Economic Base Report. (Ann Arbor, Mich.) See ECONOMICS.

Ellis, J. B. Outdoor Recreation Planning in Michigan by a Systems Analysis Approach. Part I: A Manual for "Program RECSYS." See RECREATION AND TOURISM.

Keiser, Sheron Ann. A Survey of Multi-County Cooperation in North Carolina. N.C. P-64. Prepared for the North Carolina State Department of Administration, State Planning Task Force, Sept., 1968. Distributed by the U.S. Dept. of Commerce, National Bureau of Standards, Clearinghouse for Federal Scientific and Technical Information, PB 190 230. Outlines the events leading to the creation of a regional approach to the governmental function using the nature of North Carolina regional or multi-county organizations and programs.

Wm. S. Lawrence and Associates, Inc. Bangor, Michigan Comprehensive Plan. Prepared for the Bangor Planning Commission and the Mich. Dept. of Commerce Community Planning Division, Feb., 1970. Distributed by the U.S. Dept. of Commerce, National Bureau of Standards, Clearinghouse for Federal Scientific and Technical Information, PB 190 383. A comprehensive plan for a small community--specifically, Bangor, Michigan.

Leontief, Wassily. "The Structure of Development." See ECONOMICS.

Loebs, Stephen F. The Traverse City Affiliation in Extended Care. Research Report No. 1. Ann Arbor, Mich.: Bureau of Hospital Administration, University of Michigan, 1969. A case study of an affiliation for extended medical care between a county government-owned long-term care facility and a voluntary short-term hospital in Traverse City, Michigan. Gives facts on hospital costs for the James Decker Munsun Acute Voluntary Hospital in Traverse City. Gives facts on medical care facilities available in Traverse City area.

McDevitt, Matthew, and McGowan, Thomson. New York State's Central Social Environment Study. N.Y. P-116. Prepared for the New York State Office of Planning Coordination, Albany, New York, Jan., 1970. Distributed by the U.S. Dept. of Commerce, National Bureau of Standards, Clearinghouse for Federal Scientific and Technical Information, PB 190 475. Describes the need for a monitoring system to provide the state's decision makers with continuous information on social attitudes and problems and to evaluate systematically the state programs which deal with these problems.

PLANNING

"Analytical Capabilities for the North Carolina State Planning Process: Introduction and Summary." N.C. P-64. RTI Research Memorandum OU-389-1. State planning report prepared by the Research Triangle Institute for the North Carolina State Department of Administration, Apr., 1969. Distributed by the U.S. Dept. of Commerce, National Bureau of Standards, Clearinghouse for Federal Scientific and Technical Information, PB 190 226. Discusses the research methodology used to analyze long-range needs and to plan for the more efficient allocation of resources over a ten- to twenty-time horizon. Also summarizes the results of several studies designed to assist the North Carolina State government meet these needs.

Armenakes, A. A.; Moore, H. J.; and Peden, G. T., Jr. Inland Port Facilities and Economic Growth. See ECONOMICS.

Association of Bay Area Governments, Berkeley, California. Bay Shoreline. See ENVIRONMENT AND NATURAL RESOURCES.

Russell D. Bailey and Associates. The Master Plan Summary, Town of Peestenkill, Rensselaer County, New York. Prepared for the New York State Office of Planning Coordination, Feb., 1970. Distributed by the U.S. Dept. of Commerce, National Bureau of Standards, Clearinghouse for Federal Scientific and Technical Information, PB 190 192. This report is a summary of the material prepared for the town of Peestenkill, New York, under a Comprehensive Planning Assistance Program.

Birmingham-Jefferson County Regional Planning Commission. Development Standards. See ENVIRONMENT AND NATURAL RESOURCES.

Bulkley, J. W., and Garman, Cynthia. "Sea Grant Planning Seminars: Ann Arbor--May 11-13, 1970 and Traverse City--May 25-27, 1970." Working Paper. Ann Arbor, Mich.: Sea Grant Program, School of Natural Resources, University of Michigan, July, 1970. An abridged record of the issues discussed at the planning seminars at the University of Michigan Sea Grant Program.

Committee of Institutional Cooperation. Council on Economic Growth, Technology, and Public Policy. Analysis of Water and Water-Related Research Requirements in the Great Lakes Region. Prepared for the Office of Water Research, U.S. Dept. of the Interior, June, 1968. Indicates the need for a systems analysis model of the Great Lakes. Presents a potential water-quality model on a subregional, subsystem basis. Need for a regional economic-growth model, a water-related information system, and a gaming-simulation model is described.

MANAGEMENT

DeTurk, Richard S. Managing the Natural Environment. See ENVIRONMENT AND NATURAL RESOURCES.

Walsh, Donald Eugene. A Suggested Model for the Management of a Sea Grant Institutional Program. Sea Grant Publication No. TAMU-SG-70-213. College Station, Tex.: Texas A&M University, June, 1970. Purposes: identify elements on which the nucleus of the Sea Grant Program can be built; suggest techniques for setting objectives and evaluating their attainment; suggest ways of encouraging faculty and student identification with the program. Offers techniques for administrative control. Recommends two administrative structures based on (1) subject matter formulation and (2) functional formulation.

FORECASTING--Continued

Pessemier, Edgar A. "Models for New-Product Decisions." Institute Paper No. 247. Lafayette, Ind.: Institute for Research in the Behavioral, Economic, and Management Sciences, Herman C. Krannert Graduate School of Industrial Administration, Purdue University, May, 1969. A discussion of new-product ventures and various models used to evaluate a new product and help in decision making.

Real Estate Research Corporation. Estimates and Projections of Economic and Demographic Characteristics--Saginaw, County, Michigan.
See ECONOMICS.

Saunders, Robert J. Forecasting Water Demand, An Inter- and Intra-Community Study. See ENVIRONMENT AND NATURAL RESOURCES.

_____. "Urban Area Water Consumption: Analysis and Projections."
See ENVIRONMENT AND NATURAL RESOURCES.

Suits, Daniel B. Econometric Model of Michigan. Technical Report No. 3. Prepared for the State Resource Planning Division, Mich. Dept. of Commerce, Lansing, Michigan, Apr., 1960. Describes the influence that the national economy exerts on Michigan and develops a vehicle for measuring the impact on Michigan of expected changes in the national economy. The analysis provides a valuable tool for preparing short-term forecasts of the Michigan economy.

_____. Econometric Model of Michigan, 1965. See ECONOMICS.

U.S. Department of Commerce. "Input-Output Transactions: 1961." Staff Working Paper in Economics and Statistics, No. 16. Washington, D.C.: Government Printing Office, July, 1968.

U.S. Department of Transportation. Input-Output Analysis and Transportation Planning. See TRANSPORTATION.

FORECASTING--Continued

- Ludlow, John D. "The Delphi Method: A Systems Approach to the Utilization of Experts in Technological and Environmental Forecasting." Working Paper No. 3. Ann Arbor, Mich.: Bureau of Business Research, Graduate School of Business Administration, University of Michigan, Mar. 24, 1970.
- Maki, Wilbur R. "Small Area Applications of Input-Output." Paper presented at the Input-Output Conference, Palmer House, Chicago, Illinois, Apr. 21, 1970.
- Males, Richard M.; Gates, William E.; and Walker, Junius F. A Dynamic Model of Water Quality Management Decision-Making. Submitted to Office of Water Resources Research, U.S. Dept. of the Interior, by Engineering Sciences, Inc., May, 1970. Report of a study entitled "Systematic Analysis of Management Effectiveness of the Water Quality Control Board System of California." Approach focused on informal procedures, attitudes, and objectives that are operative.
- Michigan. Aeronautics Commission and Department of Commerce in cooperation with Arthur D. Little, Inc. Transportation Predictive Procedures: Commercial and General Aviation. Technical Report No. 9A. Lansing, Mich.: State Resource Planning Division, Mich. Dept. of Commerce, 1966.
- _____. Department of Commerce. State Resource Planning Program. Transportation Predictive Procedures: Summary Report. Technical Report No. 9. Lansing, Mich.: State Resource Planning Division, Mich. Dept. of Commerce, Dec., 1966. Summarizes a series of reports predicting transportation needs in aeronautics, highway, and water travel.
- _____. Department of State Highways. Office of Planning. Resource Transportation Planning Unit in cooperation with Arthur D. Little, Inc. Transportation Predictive Procedures: Highway Travel. Technical Report No. 9B. Lansing, Mich.: State Resource Planning Division, Mich. Dept. of Commerce, Dec., 1966. Details procedures for predicting highway demands in Michigan using a computer model that determines the future highway requirements.
- Morgan, William; Peart, Margaret W.; and Barker, Florence P. Demographic Study of Wyoming: Population in Transition. See POPULATION.
- National Industrial Conference Board. Perspectives for the 70's and 80's: Tomorrow's Problems Confronting Today's Management. See PLANNING.

FORECASTING--Continued

Helmer, Olaf. Social Technology. Santa Monica, Calif.: The RAND Corporation, Feb., 1965. Reappraises the methodology of social sciences. Suggests the use of operations analysis approach, i.e., essentially successive approximation to problems in social sciences for which there are no exact, reliable, or well-established theories. Discusses operational model building and systematic use of expert opinions.

. Systematic Use of Expert Opinions. Santa Monica, Calif.: The RAND Corporation, Nov., 1967. Advocates the use of the Delphi technique--describes its use and benefits in general terms.

Hittman Associates, Inc., Columbia, Maryland. "The Main II System (HIT-413)," and "The Main II System User's Manual (HIT-413)." Vols. I and II of Forecasting Municipal Water Requirements. Prepared under contract #14-01-0001-1977 with the Office of Water Resources Research, U.S. Dept. of the Interior, Sept., 1969. Distributed by the U.S. Dept. of Commerce, National Bureau of Standards, Clearinghouse for Federal Scientific and Technical Information, PB 190 275 and PB 190 276. Volume I describes the research which led to the development of the MAIN II System, an improved forecasting tool. Volume II documents the MAIN II System computer program and presents detailed instructions for the use of the system in forecasting municipal water requirements.

"Input-Output Structure of the U.S. Economy: 1963." Survey of Current Business, Nov., 1969.

Lage, Gerald M. "The Industrial Impact of the Interstate Highway System: An Input-Output Analysis." See TRANSPORTATION.

Leontief, Wassily W. "Input-Output Economics." Scientific American, XLIIIV (Oct., 1951).

Lofting, E. M., and McGauhey, P. H. "An Input-Output Linear Programming Analysis of California Water Requirements." Contribution 116. Part IV of Economic Evaluation of Water. Berkeley, Calif.: Sanitary Engineering Research Laboratories, College of Engineering and School of Public Health, University of California, Aug., 1968. Distributed by the U.S. Dept. of Commerce, National Bureau of Standards, Clearinghouse for Federal Scientific and Technical Information, PB 188 858. Considers both the methodology and the limitations of the linear programming model as a planning and decision-making goal.

FORECASTING--Continued

Floyd, Charles F. Economic Growth in the Upper Great Lakes Region 1950-1967. See ECONOMICS.

Fusfeld, Alan R. "The Technological Progress Function: A New Technique for Forecasting." Working Paper #438-70. Cambridge, Mass.: Alfred P. Sloan School of Management, Massachusetts Institute of Technology, Jan., 1970. Concerns the implications for forecasting when the basis is the plot of technical parameters against accumulative production.

Guide To Economic Projections and Forecasts. Feb., 1967. Distributed by the U.S. Dept. of Commerce, National Bureau of Standards, Clearinghouse for Federal Scientific and Technical Information, PB 185 941. Presents information to regional commissions and others on currently available national, regional, and subregional economic projections and forecasts as well as an overview of the major economic forecasting research of federal agencies and private research organizations.

Haber, William, et al., eds. Michigan in the 1970s: An Economic Forecast. See ECONOMICS.

Harris, Curtis C., Jr. "State and County Projections: A Progress Report of the Regional Forecasting Project." Occasional paper series. College Park, Md.: Bureau of Business and Economic Research, University of Maryland, Jan., 1969. Describes the methodology and some of the results of a model used to estimate state and county projections of employment by industry sectors, unemployment, labor force, and population.

Helmer, Olaf. Analysis of the Future: The Delphi Method. Santa Monica, Calif.: The RAND Corporation, Mar., 1967. Considers the application of the Delphi technique (a method of effectively using informed intuitive judgment) to the anticipation of future events and the impact on those events of manipulation of intervening variables.

Prospects of Technological Progress. Santa Monica, Calif.: The RAND Corporation, Aug., 1967. Discusses the role that forecasting of technological development plays in shaping the future of our society. Sees the growing awareness that there is a whole spectrum of possible futures, with varying degrees of probability, and that through proper planning we may exert considerable influence over these probabilities.

FORECASTING--Continued

- Bright, James R. "Evaluating Signals of Technological Change."
Harvard Business Review, Jan.-Feb., 1970. Shows how the process of evolution from a scientific concept to a marketable product or technique is affected not only by technological advances, but also by developments in the political, economic, and social environments. Describes methodology for monitoring these environments for signs of change.
- Bronder, Leonard D., and Koval, John M. Michigan's Future: Its Population and Its Economy. See ECONOMICS.
- Brown, Byron B., Jr. Export-Employment Multiplier Analysis of a Major Industrial Community. See ECONOMICS.
- Committee of Institutional Cooperation. Council on Economic Growth, Technology, and Public Policy. Analysis of Water and Water-Related Research Requirements in the Great Lakes Region. See PLANNING.
- Dalkey, N.; Brown, B.; and Cochran, S. The Delphi Method, II: Use of Self-Ratings to Improve Group Estimates. Memorandum RM-6115-PR prepared for the U.S. Air Force Project RAND. Santa Monica, Calif.: The RAND Corporation, Nov., 1969. Distributed by the U.S. Dept. of Commerce, National Bureau of Standards, Clearinghouse for Federal Scientific and Technical Information, AD 698 735. Examines the possibility of using respondent self-ratings as a criterion for selecting more accurate subgroups in applications of the Delphi procedures for eliciting group judgments.
- Daniel, Mann, Johnson & Mendenhall, Consultants. Economic Forecasts for the City of Laguna Beach, California--General Plan Program. See ECONOMICS.
- Downs, Anthony. Bureaucratic Structure and Decision-making. Memorandum RM-4646-1-PR prepared for the U.S. Air Force Project RAND. Santa Monica, Calif.: The RAND Corporation, Oct., 1966. This study analyzes the behavior of bureaucratic organizations in a wide variety of situations.
- Enzer, Selwyn. "A Case Study Using Forecasting as a Decision Making Aid." IFF Working Paper Wp-2. Middletown, Conn.: Institute for the Future, Riverview Center, Dec., 1969. Describes a demonstration in which two forecasting techniques were used to aid the planning and decision-making process. The primary analytic techniques used were the Delphi Method and the cross-impact matrix technique.

FORECASTING

- Bargur, Jona. "A Dynamic Interregional Input-Output Programming Model of the California and Western States Water Economy." Contribution No. 128. Part VI of Economic Evaluation of Water. Berkeley, Calif.: Sanitary Engineering Research Laboratories, College of Engineering and School of Public Health, University of California, June, 1969. Distributed by the U.S. Dept. of Commerce, National Bureau of Standards, Clearinghouse for Federal Scientific and Technical Information, PB 188 857. The study reviews the role of input-output analysis in resource planning in general and in water and resource planning in particular.
- Barzelay, Martin E. Fourth Semi-Annual Report--Syracuse/NASA Program For the Period July 1, 1969-December 31, 1969: Multidisciplinary Studies in Management and Development Programs in the Public Sector. Mar., 1970. Distributed by the U.S. Dept. of Commerce, National Bureau of Standards, Clearinghouse for Federal Scientific and Technical Information, N70-24092.
- Bass, Frank M. "A New Product Growth Model for Consumer Durables." Management Science, XV (Jan., 1969). This article discusses a growth model for the timing of initial purchase of new products.
- Benrud, C. H. Systematic Procedures for Population Estimates and Projections for North Carolina. Technical report Su-388-1 prepared for the North Carolina State Department of Administration, Feb., 1969. Distributed by the U.S. Dept. of Commerce, National Bureau of Standards, Clearinghouse for Federal Scientific and Technical Information, PB 190 225. Provides a detailed description of computer programs for eight major routines for estimating and projecting county populations.
- Birmingham-Jefferson County Regional Planning Commission. Development Standards. See ENVIRONMENT AND NATURAL RESOURCES.
- Bramer, Henry C., and Motz, Donald J. (Cyrus Wm. Rice Division, NUS Corporation, Pittsburgh, Pennsylvania). The Economic Value of Water in Industrial Uses (A Continuation). Report prepared for the Office of Water Resources Research, U.S. Department of the Interior, Dec., 1969. Distributed by the U.S. Dept of Commerce, National Bureau of Standards, Clearinghouse for Federal Scientific and Technical Information, PB 189 248. This study tries to expand upon the previously developed methodology of determining industrial water utilization costs and provides a wider base upon which statistically reliable data can be generated.

ENVIRONMENT AND NATURAL RESOURCES--Continued

U.S. President's Science Advisory Committee. Effective Use of the Sea. Report of the Panel on Oceanography. Washington, D.C.: Government Printing Office, June, 1966. The panel's studies are an attempt to state the goals for a national program to serve the marine interests, to assess current and planned ocean-oriented programs, to identify opportunities for new programs in technology and science, and to recommend measures to effect an ocean science and technology program consonant with national needs and interests.

Vertrees, Robert C. "A Study of Nonresident Landowners of Ten or More Acres in Antrim and Kalkaska Counties, Michigan." See POPULATION.

Vines, William R. Recreation and Open Space. Fla. P-104(g). Report to the Area Planning Board of Palm Beach County, West Palm Beach, Florida, Apr., 1970. Distributed by the U.S. Dept. of Commerce, National Bureau of Standards, Clearinghouse for Federal Scientific and Technical Information, PB 191 552. Includes an inventory of existing lands and facilities, an examination of administering agencies, summary and problems, and recommended long-range objectives and management actions.

ENVIRONMENT AND NATURAL RESOURCES--Continued

Seeburger, D. James. "Observations on the Big Rock Nuclear Power Plant: Cooling Water Discharge to Lake Michigan." Lansing, Mich.: Bureau of Water Management, May 21, 1968.

David B. Smith Engineers, Inc. Comprehensive Water Supply, Sewerage, Solid Waste and Air Pollution Control Plans. Fla. P-104. Report to the Area Planning Board of Palm Beach County, West Palm Beach, Florida, Feb., 1970. Distributed by the U.S. Dept. of Commerce, National Bureau of Standards, Clearinghouse for Federal Scientific and Technical Information, PB 191 553. Presents a summary of the information generated under Part I of the study and an analysis of the inventory results leading to the development of comprehensive water supply, sewerage, solid wastes, and air pollution control plans.

Larry Smith and Co., Inc., Real Estate Consultants. Land Utilization and Marketability Study, Central Business District Urban Renewal Project, Traverse City, Michigan. See ECONOMICS.

Southwestern Pennsylvania Regional Planning Commission, Pittsburgh, Pennsylvania. Alternative Regional Development Patterns. See PLANNING.

Urban Land Research Analysts Corporation, Lexington, Massachusetts. Framework for a Coherent Policy on Urban Land. Sept., 1969. Distributed by U.S. Dept. of Commerce, National Bureau of Standards, Clearinghouse for Federal Scientific and Technical Information, PB 190 842. Concerns urban land development related to public control. Identifies broad policy objectives of increasing "urban capacity." Inventories federal policies on urban land, identifies gaps, and proposes policies to fill those gaps.

U.S. Executive Office of the President. Office of Science and Technology. Federal Water Resources Research Program for Fiscal Year 1970. Prepared by the Federal Council for Science and Technology, Committee on Water Resources Research. Washington, D.C.: Government Printing Office, Dec., 1969. This annual report of the COWRR of the FCST reflects the committee's effort at self-evaluation.

The Universities and Environmental Quality--Commitment to Problem Focused Education. Report by John S. Steinhart and Stacie Cherniach to the President's Environmental Quality Council. Washington, D.C.: Office of Science and Technology, Sept., 1969. Study of a few of the vigorous multidisciplinary programs at universities. Programs of interest are those directed at discovering environmental alternatives and developing the broadly trained professionals to deal with environmental problems. Includes recommendations for federal action.

ENVIRONMENT AND NATURAL RESOURCES--Continued

Herman D. Ruth and Associates, City and Regional Planning Consultants, Berkeley, California. Regional and Local Land Use Planning. Report prepared under a contract with the Public Land Law Review Commission, PLLRC Study Report No. 10, June, 1969 (revised Feb., 1970). Distributed by the U.S. Dept. of Commerce, National Bureau of Standards, Clearinghouse for Federal Scientific and Technical Information, PB 189 410, 411, 412, 413. A series to provide data for the Commission's use in forming a basis for recommending future public land policies to Congress and the President of the United States. Volume III includes the content of the planning program methodologies, practices, and criteria governing the land use planning procedures of each major federal land management agency. Emphasizes the objectives, principles, factors, and methods of land classification employed in land use planning.

Saginaw County Metropolitan Planning Commission. Office of the County Planner. Saginaw County--Land Use Analysis. Mich. P-269. Saginaw, Michigan, Nov., 1969. Distributed by the U.S. Dept. of Commerce, National Bureau of Standards, Clearinghouse for Federal Scientific and Technical Information, PB 190 057. This report analyzes the composition, characteristics, and problem areas of the 1967 county land use pattern and identifies factors and influences which have shaped and are shaping the existing land use pattern in the county. It examines the consequences of the existing land use pattern upon future development, outlines selected courses of action to change existing land use trends, and delineates areas for future development.

_____. Interim Zoning and Subdivision. See PLANNING.

Saunders, Robert J. Forecasting Water Demand, An Inter- and Intra-Community Study. West Virginia University Business and Economic Studies, Vol. 11, No. 2. Morgantown, W. Va.: Bureau of Business Research, College of Commerce, W. Virginia University, 1969. This study identifies the factors closely associated with the level of water usage in urban areas. Alternative forecasting methods as well as projection sets of water usage are suggested and constructed.

_____. "Urban Area Water Consumption: Analysis and Projections." Quarterly Review of Economics and Business, IX (Summer, 1969). Attempts to identify those factors which, on an aggregate basis, are closely associated with the level of water usage in urban areas. Projections are made for the consumption of water supplied by municipal water companies in 141 urban areas for the year 1975.

(Continued)

ENVIRONMENT AND NATURAL RESOURCES--Continued

Northern Great Lakes Region Multi-Soil Conservation Districts' Framework Program for the Grand Traverse Bay, Broad Program Area--

Michigan No. 10. Prepared by Emmet, Charlesvoix, Antrim, Kalkaska, Grand Traverse, Benzie and Leelanau Soil Conservation Districts with the assistance of the U.S. Soil Conservation Service--Cooperative Extension Service, Oct. 28, 1966. Presents a framework program for the Grand Traverse Bay area, Michigan.

Overman, Michael. Water: Solutions to a Problem of Supply and Demand. Garden City, N. Y.: Doubleday & Co., Inc., 1969. An overview of methods for maintaining a balanced distribution of water for agricultural, industrial, and personal use. Includes information on dams, desalination, and pollution.

Parker, Frank L., and Krenkel, Peter A. Engineering Aspects of Thermal Pollution; Biological Aspects of Thermal Pollution. Nashville, Tenn.: Vanderbilt University Press, 1969. This book documents the disastrous effects which thermal pollution can have on rivers, lakes, estuaries, and coastal waters, with recommendations for solutions.

Rensselaer County Department of Planning and Promotion. Land Use Analysis. Prepared under the Urban Planning Assistance Program for the New York State Office of Planning Coordination, Dec., 1968. Distributed by the U.S. Dept. of Commerce, National Bureau of Standards, Clearinghouse for Federal Scientific and Technical Information, PB 191 181. The object of the study was to determine the existing patterns of development as well as the specific primary building use.

Rhode Island Statewide Comprehensive Transportation and Land Use Planning Program, Providence, Rhode Island. State of Rhode Island Public Rights-of-Way to the Shore. R.I. P-51, Mar., 1970. Distributed by the U.S. Dept. of Commerce, National Bureau of Standards, Clearinghouse for Federal Scientific and Technical Information, PB 191 231. The report summarizes the case law, legislation, and definitions relating to the public rights-of-way, presents an inventory and analysis of the rights-of-way for each municipality, and contains the recommendations for further legislative and administrative actions.

(Continued)

ENVIRONMENT AND NATURAL RESOURCES--Continued

- Gloyna, Earnest F., ed. Advances in Water Quality Improvement. Austin, Tex.: University of Texas Press, 1968. A series of scholarly articles on water pollution control and recent progress in water quality improvement. Contains the most advanced thinking on waste-water handling, treatment, and disposal.
- Goldman, Marshall I., ed. Controlling Pollution: The Economics of a Cleaner America. Englewood Cliffs, N.J. : Prentice-Hall, Inc., 1967. A collection of the writings of several biologists, economists, and others interested in the problems of air and water pollution.
- Hittman Associates, Inc. Forecasting Municipal Water Requirements. See FORECASTING.
- Keeling, William B., et al. Economic Impact of the Proposed Cumberland Island National Seashore. See ECONOMICS.
- Lake Michigan Basin Study: Michigan Section. Jan., 1968. Pamphlet prepared by the League of Women Voters of Michigan on existing problems and control measures in the Michigan Section of the Lake Michigan Basin.
- Lofting, E. M., and McGauhey, P. H. "An Input-Output Linear Programming Analysis of California Water Requirements." See FORECASTING.
- Males, Richard M.; Gates, William E.; and Walker, Junius F. A Dynamic Model of Water Quality Management Decision-Making. See FORECASTING.
- Mellanby, Kenneth. Pesticides and Pollution, London: William Collins Sons & Co., Ltd., 1967. Concise descriptions of the chemical properties and effects of pesticides and the various forms of pollutants affecting air, rivers, and seas.
- Nedved, Thomas K. "Pesticides in the Grand Traverse Bay Region of Northern Lake Michigan." Paper presented at the Thirteenth Conference on Great Lakes Research, International Association for Great Lakes Research, Buffalo, New York, Apr. 2, 1970. This study shows, by means of tables and maps, the degree of pesticide concentrations at various points in the Grand Traverse Bay.
- Nikolaieff, George A. The Water Crisis. New York: H. W. Wilson Co., 1967. An analysis of water needs now and in the future. The financial problems inherent in water pollution abatement are given detailed treatment.

ENVIRONMENT AND NATURAL RESOURCES--Continued

Chubb, Michael, and Greene, Jeffrey C. An Overview of the Economic Potential of Sport and Commercial Fisheries in the Upper Great Lakes Region. See ECONOMICS.

Committee of Institutional Cooperation. Council on Economic Growth, Technology, and Public Policy. Analysis of Water and Water-Related Research Requirements in the Great Lakes Region. See PLANNING.

Cunningham, Floyd F. 1001 Questions Answered about Water Resources. New York: Dodd, Mead & Co., 1967. Arranged in question-and-answer format, this book treats the problems of supply, development, and conservation of water, providing much information on the sources and consequences of pollution.

Darnton, Donald C., and Meiburg Charles O. The Contributions of the Ports of Virginia to the Economy of the Commonwealth. See ECONOMICS.

DeBell, Garret. The Environmental Handbook. New York: Ballantine Books, Inc., 1970. This handbook was designed as a source of ideas and tactics for the April 22, 1970 National Environmental Teach-In. Experts discuss pollution, pesticides, waste disposal, survival, etc., and present constructive suggestions for individual and group action.

DeTurk, Richard S. Managing the Natural Environment. Prepared for the Tri-State Transportation Commission, New York, New York, Mar., 1970. Distributed by the U.S. Dept. of Commerce, National Bureau of Standards, Clearinghouse for Federal Scientific and Technical Information, PB 190 290. A regional plan for water, sewage, air, and refuse.

Eutrophication: Causes, Consequences, Correctives. Washington, D.C.: Division of Biology and Agriculture, National Research Council, 1969. A collection of papers by international experts on the disastrous consequences of releasing excess nutrients and pollutants into the rivers, lakes, and seas.

Fogel, M. E., et al. "Comprehensive Economic Cost Study of Air Pollution Control Costs for Selected Industries and Selected Regions." Final report of the Research Triangle Institute, Research Triangle Park, N. Carolina, Feb., 1970. Prepared for the National Air Pollution Control Administration of the Department of Health, Education and Welfare. Distributed by the U.S. Dept. of Commerce, National Bureau of Standards, Clearinghouse for Federal Scientific and Technical Information, PB 191 054. Based on estimates of costs of controlling emissions of selected pollutants from 22 sources within 100 metropolitan areas. Costs are presented by region and sources.

(Continued)

ENVIRONMENT AND NATURAL RESOURCES

- Association of Bay Area Governments, Berkley, California. Bay Shoreline. Supplemental Report RP-2. May, 1968. Distributed by the U.S. Dept. of Commerce, National Bureau of Standards, Clearinghouse for Federal Scientific and Technical Information, PB 184 360. The report concerns a regional plan for the Bay area which is developed around five problems: shoreline development, parks and open space, refuse disposal, transportation, and design of a regional information system.
- Ayres, Robert U. Technology and Urban Transportation: Environmental Quality Considerations. See TRANSPORTATION.
- Bargur, Jona. "A Dynamic Interregional Input-Output Programming Model of the California and Western States Water Economy." See FORECASTING.
- Behrman, Abraham S. Water is Everybody's Business; The Chemistry of Water Purification. Garden City, N.Y.: Anchor Books, 1968. After a description of water sources, the author turns to the types of soluble matter contained in natural waters and the techniques of water purification.
- Besselièvre, Edmund B. The Treatment of Industrial Wastes. New York: McGraw-Hill Book Co., 1969. A technical work on waste treatment, especially useful as a reference source for engineers in the field of industrial waste treatment. Includes data on governmental involvement in waste treatment programs and recent legislation relating to pollution.
- Birmingham-Jefferson County Regional Planning Commission. Development Standards. Dec., 1966. Distributed by the U.S. Dept. of Commerce, National Bureau of Standards, Clearinghouse for Federal Scientific and Technical Information, PB 184 379. The report gives a set of standards for determining future urban land needs--residential, commercial, and industrial--to be used for translation of population and economic activity projections into estimates of land needed for future development.
- Blome, Donald A. The Proposed Sleeping Bear Dunes National Lakeshore--An Assessment of the Economic Impact. See ECONOMICS.
- Bramer, Henry C., and Motz, Donald J. The Economic Value of Water in Industrial Uses (A Continuation). See FORECASTING.
- Briggs, Peter. Water, The Vital Essence. New York: Harper & Row, 1967. A highly readable treatment of the origin of water, water research projects, and the problems of water control.

(Continued)

ECONOMICS--Continued

Vertrees, Robert C. "A Study of Nonresident Landowners of Ten or More Acres in Antrim and Kalkaska Counties, Michigan." See POPULATION.

ECONOMICS--Continued

Southwestern Pennsylvania Planning Commission, Pittsburgh, Pennsylvania.
Alternative Regional Development Patterns. See PLANNING.

Suits, Daniel B. Econometric Model of Michigan. 1960. See FORECASTING.

_____. Econometric Model of Michigan. Compiled for the Office of Economic Expansion, Mich. Dept. of Commerce, Lansing, Michigan, June, 1965. Presents the results of a statistical study of the Michigan economy and its relationships to the national economy.

TRW Incorporated. Systems Group. "Greater Cleveland Goals and Programs."
See PLANNING.

Upper Great Lakes Regional Commission. Economic Atlas, Upper Great Lakes Basin. Washington, D.C., Oct., 1968. Maps summarize data on the economy of the region, which were drawn from county and other local entities. The maps make apparent at a glance significant distributional aspects of population, economics, social, and institutional information.

_____. Growth Centers and Their Potentials in the Upper Great Lakes Region. Report of the Commission. May, 1969. The Commission's report is a view of the region in terms of potential investment "areas."

_____. Working Papers and Regional Project Proposals for Early Action Program, #3: Public Facilities and Services for Economic Development, Developmental Airports. Mar., 1968. Presents an immediate action program of urgently needed projects that are designed to increase the capacity and reliability of airports in carefully selected communities.

Urban Land Research Analysts Corporation, Lexington, Massachusetts. Some Relevant Considerations for Metropolitan Fiscal Policy. Final Report #4. Feb., 1970. Distributed by the U.S. Dept. of Commerce, National Bureau of Standards, Clearinghouse for Federal Scientific and Technical Information, PB 190 761. This report seeks to identify policies that local governments--on their own in some cases or with federal support in others--can adopt to counter the distortions and other deleterious effects of the property tax which is, and will continue to be, their major source of revenue.

U.S. Department of Commerce. "Input-Output Transactions: 1961." See FORECASTING.

_____. Economic Development Administration. Industrial Location as a Factor in Regional Economic Development. Washington, D.C.: Government Printing Office, 1966. This report is designed to help regional commissions determine their role in industrial development.

ECONOMICS--Continued

Michigan. Executive Office of the Governor. Bureau of Planning and Program Development. Office of Planning Coordination. Michigan's Planning and Development Regions, Delineation Criteria and Comments. See PLANNING.

Mississippi State University. College of Business and Industry. Division of Research. An Analysis of the Economic Feasibility of Expanding the Greenville Port Facilities. Report to the Vicksburg District Corps of Engineers, Vicksburg, Mississippi, 1970. The objectives of this report are to determine if a need exists to expand the Port of Greenville, Mississippi and, if so, when.

"1970 Site Selection Handbook--Vol. II." Prepared by the editors of Industrial Development. Atlanta, Ga.: Conway Research, Inc., 1970. Includes information about industry on growth factors, financing facts, legislative incentives and assistance, guides to sites and development organizations, bibliography, survey of the state development programs, and a checklist of site selection factors.

Northwest Michigan Economic Development District Commission, Traverse City, Michigan. Prologue for Accelerated Growth of Economy. Oct., 1968. The report sets forth the economic profile of the district and provides the basis for the second phase of the program-- the action plan.

Outdoor Recreation Resources Review Commission. Economic Studies of Outdoor Recreation. See RECREATION AND TOURISM.

Pessemier, Edgar A. "Models for New-Product Decisions." See FORECASTING.

Real Estate Research Corporation. Estimates and Projections of Economic and Demographic Characteristics--Saginaw County, Michigan. Mich. P-269. Saginaw, Mich.: Saginaw County Metropolitan Planning Commission, Nov., 1969. Distributed by the U.S. Dept. of Commerce, National Bureau of Standards, Clearinghouse for Federal Scientific and Technical Information, PB 190 056. This study includes estimates and projections of population, employment, housing, auto registrations, and land use for small areas and the city of Saginaw in the Saginaw SMSA. Analytical procedures are briefly defined and assumptions made concerning the future of the local area. The intent of the study was to provide quantitative inputs to the comprehensive planning and transportation study planning processes of Saginaw County.

Larry Smith and Co., Inc., Real Estate Consultants. Land Utilization and Marketability Study, Central Business District Urban Renewal Project, Traverse City, Michigan. Report prepared for Traverse City, Michigan, May 31, 1967. The study evaluates both the suitability of the potential and possible major land reuses for the redevelopment of the project area, as well as the marketability of land allocated for specific reuses.

ECONOMICS--Continued

- Lamont, Larry. "Michigan's Chemical Industry." Unpublished report prepared for the Industrial Development Division, Institute of Science and Technology, University of Michigan, Ann Arbor, Mich., 1968. An intensive study of Michigan's chemical industry--one of the state's most important industries--and its problems.
- Leontief, Wassily W. "Input-Output Economics." See FORECASTING.
- _____. "The Structure of Development." Scientific American, Sept., 1963. Analysis of an economy by the input-output method reveals its internal structure, which is dictated largely by technology. Applied to underdeveloped economies, the technique maps out paths to growth.
- _____. "The Structure of the U.S. Economy." Scientific American, CCXII (Apr., 1965).
- _____, and Hoffenberg, Marvin. "The Economic Effects of Disarmament." Scientific American, CCIV (Apr., 1961). The technique of input-output analysis is adopted to facilitate forecasting the effect on sales and jobs if funds now expended for military purposes are reallocated.
- Liu, Ben-Chieh. "The Relationship among Population, Income and Retail Sales in SMSAs, 1952-66." Quarterly Review of Economics and Business, X (Spring, 1970).
- Loebs, Stephen F. The Traverse City Affiliation in Extended Care. See PLANNING.
- Lofting, E. M., and McGauhey, P. H. "An Input-Output Linear Programming Analysis of California Water Requirements." See FORECASTING.
- Maki, Wilbur R. "Small Area Applications of Input/Output." See FORECASTING.
- Michigan. Department of Commerce. Northwest Michigan Development District and the Office of Community Planning. Community and Area Planning and Development in the Northwest Michigan Development District. Mich. P-295. Lansing, Michigan, May, 1970. The status of planning among the units of government in the Northwest Development District is shown in an inventory of the enabling statutes under which planning and zoning bodies are established and of current planning studies, technical assistance, implementive tools, and educational programs.

(Continued)

ECONOMICS--Continued

- Haber, William; Spivey, W. Allen; and Warshaw, Martin R., eds. Michigan in the 1970s: An Economic Forecast. Michigan Business Studies Vol. XVI, No. 4. Ann Arbor, Mich.: Bureau of Business Research, Graduate School of Business Administration, University of Michigan, 1965. An examination of the problems of Michigan's industrial economy and how successfully it can adjust to economic change in the 1970s. The following topics are included: the national economy, the supply of capital in the United States, a demographic analysis of Michigan, the future of the Detroit Metropolitan Area, and the social structure of the Michigan labor market.
- Hazard, John L. Michigan's Commerce: Domestic and International. Technical Report No. 5. Lansing, Mich.: State Resource Planning Program, Mich. Dept. of Commerce, Apr., 1966. Analyzes the size, scope, and structure of Michigan's trade with other states and foreign nations and Michigan's current commercial role.
- "Input-Output Structure of the U.S. Economy: 1963." Survey of Current Business, Nov., 1969.
- Keeling, William B. The Georgia Travel Industry: 1960-1968. See RECREATION AND TOURISM.
- _____, et al. Economic Impact of the Proposed Cumberland Island National Seashore. Report prepared for the National Park Service, U.S. Dept. of the Interior. Athens, Ga.: Bureau of Business and Economic Research, Graduate School of Business Administration, University of Georgia, 1968. The study determines how Camden and Glynn counties as well as the travel industry will be affected if the proposal to develop Cumberland Island as a national park is carried out by the National Park Service.
- Keiser, Sheron Ann. A Survey of Multi-County Cooperation in North Carolina. See PLANNING.
- Kievat, Irene M. Michigan's Manpower Resources. Technical Report No. 10C. Lansing, Mich.: State Resource Planning Program, Mich. Dept. of Commerce, Mar., 1967. Sets forth the demands for occupational skills which will be generated by the future course of our business and industrial development.
- Lage, Gerald M. "The Industrial Impact of the Interstate Highway System: An Input-Output Analysis." See TRANSPORTATION.

(Continued)

ECONOMICS--Continued

Darnton, Donald C., and Meiburg, Charles O. The Contributions of the Ports of Virginia to the Economy of the Commonwealth. Charlottesville, Va.: Graduate School of Business Administration, University of Virginia, Oct., 1968. This report on the contributions of Virginia's ports to the state's economy introduces changes in method and scope that distinguish the resulting estimates from those of earlier studies.

Dean, Burton V., et al. A Preliminary Report on the Economic Impact of Research and Development Budget Decrements. Cleveland, Ohio: Case Western Reserve University, Dec., 1969. Distributed by the U.S. Dept. of Commerce, National Bureau of Standards, Clearinghouse for Federal Scientific and Technical Information, AD 703 897. This study determines what effect a decrement in the financing of research and development projects by the federal government will have on research organizations and on the local regional economy. A computer simulation model to investigate such effects is developed.

Economic Base Report. Ann Arbor, Mich.: Planning Dept. and Planning Commission, Aug., 1965. In this study generalizations about university towns are tested against available facts, and additional conclusions suggested by the data are advanced.

Edwards, Dale, and Blasius, Richard. Michigan Port Hinterlands as Determined by Inland Carrier Class Rates. Technical Report No. 8. Lansing, Mich.: State Resource Planning Program, Mich. Dept. of Commerce, Dec., 1966. The study offers some facts and figures about the relation between Michigan ports and the state's total commerce and industry, and gives further impetus to the full use of the St. Lawrence Seaway.

Floyd, Charles F. Economic Growth in the Upper Great Lakes Region 1950-1967. Prepared for the Office of Economic Research, Economic Development Administration, U.S. Dept. of Commerce, Washington, D.C., Apr., 1970. The study defines the income gap, documents its magnitude in the Upper Great Lakes region, analyzes the reasons for the slow employment growth, and projects the region's employment growth to 1980.

Fogel, M. E., et al. "Comprehensive Economic Cost Study of Air Pollution Control Costs for Selected Industries and Selected Regions." See ENVIRONMENT AND NATURAL RESOURCES.

Guide to Economic Projections and Forecasts. See FORECASTING.

(Continued)

ECONOMICS--Continued

Bronder, Leonard D., and Koval, John M. Michigan's Economic Past: Basis for Prosperity. Technical Report No. 10A. Lansing, Mich.: State Resource Planning Division, Office of Economic Expansion, Mich. Dept. of Commerce, Mar., 1967. Traces the development of Michigan's economy from the turn of the century to the present (1967). Covers employment and income trends, explains and provides shift-share analysis of employment changes.

Michigan's Future: Its Population and Its Economy. Technical Report No. 10B, Lansing, Mich.: State Resource Planning Division, Office of Economic Expansion, Mich. Dept. of Commerce, Mar., 1967. Traces the development of urban centers and establishes the relation between the economic prosperity of the state and the long-run pattern of immigration. Contains economic as well as population data for the year 1980. Economic forecasting methodology is given in the Michigan Manpower Study.

Brown, Byron B., Jr. Export-Employment Multiplier Analysis of a Major Industrial Community. Study No. 7. Houston, Tex.: Center for Research in Business and Economics, University of Houston, 1964. A study of basic and total employment relations in the Houston Metropolitan Area.

Bulkley, J. W., and Garman, Cynthia. "Sea Grant Planning Seminars: Ann Arbor--May 11-13, 1970 and Traverse City--May 25-27, 1970." See PLANNING.

Carter, Anne P. "The Economics of Technological Change." Scientific American, CCXIV (Apr., 1966).

Chubb, Michael, and Greene, Jeffrey C. An Overview of the Economic Potential of Sport and Commercial Fisheries in the Upper Great Lakes Region. Technical Report No. 3. East Lansing, Mich.: Recreation Research and Planning Unit, Department of Resource Development, College of Agriculture and Natural Resources, Michigan State University, Nov., 1968. The planning statement outlines the present situation, points out the problems and potentials, and suggests program directions for achieving desirable development of the region's sport and commercial fisheries.

Daniel, Mann, Johnson, & Mendenhall, Consultants. Economic Forecasts for the City of Laguna Beach, California--General Plan Program. Report prepared for the city of Laguna Beach, Nov., 1969. Distributed by the U.S. Dept. of Commerce, National Bureau of Standards, Clearinghouse for Federal Scientific and Technical Information, PB 188 547.

(Continued)

ECONOMICS

Allen, Gerald L. Colorado Ski and Winter Recreation Statistics, 1968. See RECREATION AND TOURISM.

Armenakes, A. A.; Moore, H. J.; and Peden, G. T., Jr. Inland Port Facilities and Economic Growth. State College, Miss.: Division of Research, College of Business and Industry, Mississippi State University, 1970. Four basic purposes of the study are to analyze the role of inland port facilities in economic growth, construct the industrial structure of each inland port county with respect to those groups that utilize water transportation, determine the interindustry demand among groups of industries that use water transportation, and analyze the differentials among inland port counties.

Bargur, Jona. "A Dynamic Interregional Input-Output Programming Model of the California and Western States Water Economy." See FORECASTING.

Bass, Frank M. "A New Product Model for Growth Consumer Durables." See FORECASTING.

Battelle Memorial Institute. Columbus (Ohio) Laboratories. Industries Suited for the Upper Great Lakes Region. Report by David C. Sweet, John M. Griffin, and Hal S. Maggied for the Upper Great Lakes Regional Commission, 1970. Evaluates industries best suited for the Upper Great Lakes region. Identified industries have certain characteristics that make their potential for locating in the region higher than that of other industries.

_____. Socio-Economic Research Section. The Michigan Manpower Study--Phase I. See POPULATION.

_____. Socio-Economic Research Section. Manpower and Regional Economics Div. The Michigan Manpower Study--Final Report. See POPULATION.

Blome, Donald A. The Proposed Sleeping Bear Dunes National Lakeshore--An Assessment of the Economic Impact. Lansing, Mich.: Institute for Community Development and Services, Michigan State University, Sept., 1967. Analyzes the economic effect on agriculture, manufacturing, forestry, and tourism in Benzie and Leelanau counties if the Sleeping Bear Dunes become a national lakeshore.

(Continued)

CONTENTS

Economics	1
Environment and Natural Resources	9
Forecasting	16
Management	22
Planning	23
Population	27
Recreation and Tourism	28
Technology	30
Transportation	32
Index of Authors	33
Index of Titles	39



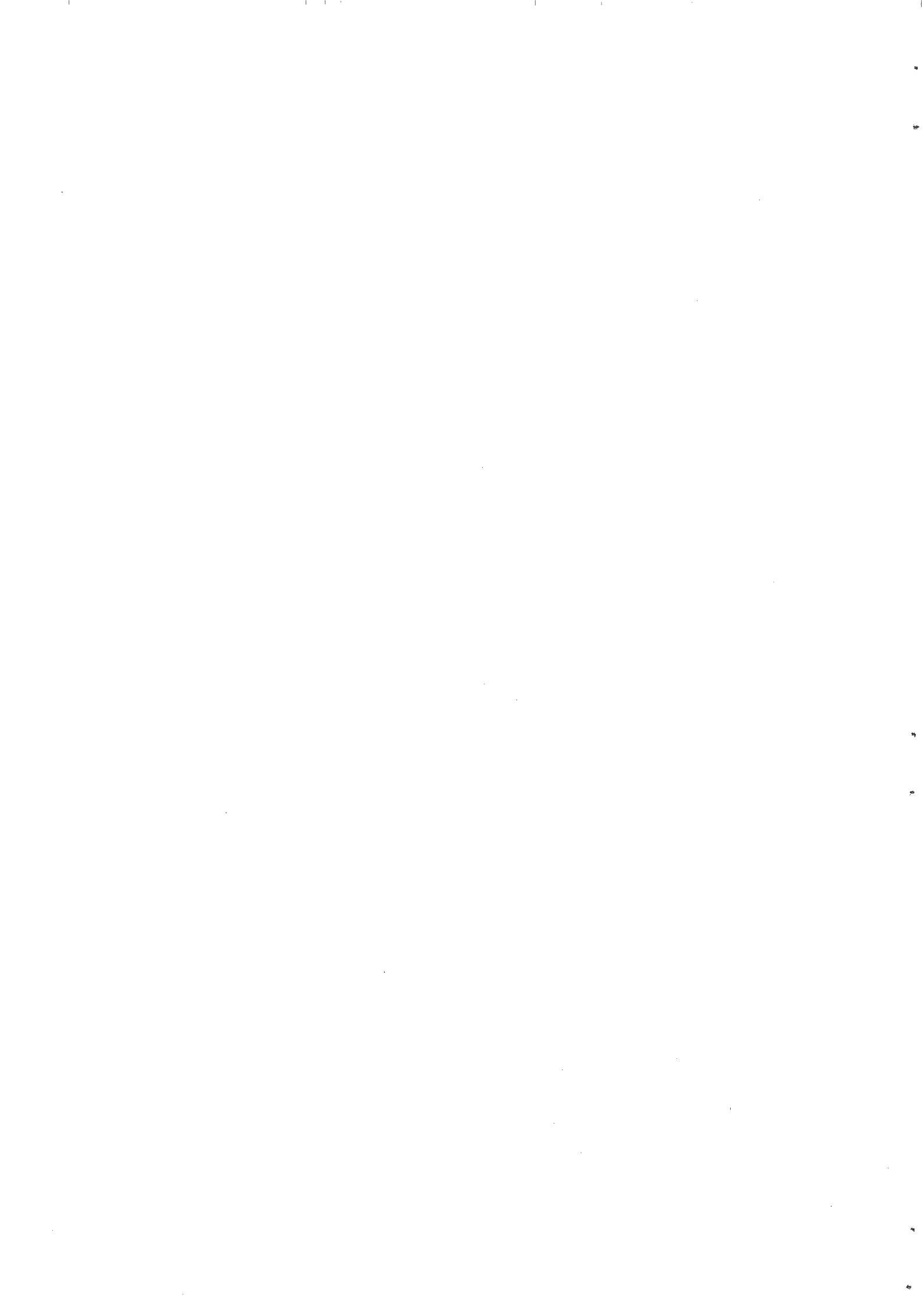
FOREWORD

This annotated bibliography is a necessary result of the extensive amount of information that has been gathered by the Bureau of Business Research in making a socioeconomic forecast for the ten-county Grand Traverse Bay region. The forecast is being undertaken as part of the Sea Grant Program at the University of Michigan. Members of the Sea Grant team in other disciplines should find the bibliography useful because of the broadness of its subject matter.

The entries have been classified in major subject categories that are pertinent to the socioeconomic research being conducted. Entries are listed alphabetically within each category. Subject categories are economics, environment and natural resources, forecasting, management, planning, population, recreation and tourism, technology, and transportation.

Many of the citations listed in the bibliography were difficult to organize because it was not always clear whether a name or an agency should be listed as author. An index of both authors and titles is provided at the end of the bibliography. The index of authors is cross-referenced to include all possible "authors" under which the publication might be found.

John Ludlow
Research Associate
Bureau of Business Research
University of Michigan



Bureau of Business Research
Graduate School of Business Administration
University of Michigan

July 1971

**ANNOTATED BIBLIOGRAPHY OF SOCIOECONOMIC
INFORMATION: SEA GRANT PROGRAM**

Working Paper No. 42

by

Chrystie King
William R. Cook
Research Assistants

Prepared for the Sea Grant Program at
the University of Michigan

FOR DISCUSSION PURPOSES ONLY

None of this material is to be
quoted or reproduced without
the express permission of the
Bureau of Business Research