

CONTRIBUTIONS FROM THE MUSEUM OF PALEONTOLOGY

(Continuation of Contributions from the Museum of Geology)

UNIVERSITY OF MICHIGAN

VOL. III, No. 7, pp. 151-154 (1 pl., 1 text fig.)

FEBRUARY 20, 1930

ADDITIONAL NOTES ON NEPHRITICERINA

BY

AUG. F. FOERSTE



UNIVERSITY OF MICHIGAN
ANN ARBOR

AIIM SCANNER TEST CHART # 2

Spectra

4 PT ABCDEFGHIJKLMNOPQRSTUVWXYZabcdefghijklmnopqrstuvwxyz;"/?0123456789
 6 PT ABCDEFGHIJKLMNOPQRSTUVWXYZabcdefghijklmnopqrstuvwxyz;"/?0123456789
 8 PT ABCDEFGHIJKLMNOPQRSTUVWXYZabcdefghijklmnopqrstuvwxyz;"/?0123456789
 10 PT ABCDEFGHIJKLMNOPQRSTUVWXYZabcdefghijklmnopqrstuvwxyz;"/?0123456789

Times Roman

4 PT ABCDEFGHIJKLMNOPQRSTUVWXYZabcdefghijklmnopqrstuvwxyz;"/?0123456789
 6 PT ABCDEFGHIJKLMNOPQRSTUVWXYZabcdefghijklmnopqrstuvwxyz;"/?0123456789
 8 PT ABCDEFGHIJKLMNOPQRSTUVWXYZabcdefghijklmnopqrstuvwxyz;"/?0123456789
 10 PT ABCDEFGHIJKLMNOPQRSTUVWXYZabcdefghijklmnopqrstuvwxyz;"/?0123456789

Century Schoolbook Bold

4 PT ABCDEFGHIJKLMNOPQRSTUVWXYZabcdefghijklmnopqrstuvwxyz;"/?0123456789
 6 PT ABCDEFGHIJKLMNOPQRSTUVWXYZabcdefghijklmnopqrstuvwxyz;"/?0123456789
 8 PT ABCDEFGHIJKLMNOPQRSTUVWXYZabcdefghijklmnopqrstuvwxyz;"/?0123456789
 10 PT ABCDEFGHIJKLMNOPQRSTUVWXYZabcdefghijklmnopqrstuvwxyz;"/?0123456789

News Gothic Bold Reversed

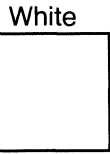
4 PT ABCDEFGHIJKLMNOPQRSTUVWXYZabcdefghijklmnopqrstuvwxyz;"/?0123456789
 6 PT ABCDEFGHIJKLMNOPQRSTUVWXYZabcdefghijklmnopqrstuvwxyz;"/?0123456789
 8 PT ABCDEFGHIJKLMNOPQRSTUVWXYZabcdefghijklmnopqrstuvwxyz;"/?0123456789
 10 PT ABCDEFGHIJKLMNOPQRSTUVWXYZabcdefghijklmnopqrstuvwxyz;"/?0123456789

Bodoni Italic

4 PT ABCDEFGHIJKLMNOPQRSTUVWXYZabcdefghijklmnopqrstuvwxyz;"/?0123456789
 6 PT ABCDEFGHIJKLMNOPQRSTUVWXYZabcdefghijklmnopqrstuvwxyz;"/?0123456789
 8 PT ABCDEFGHIJKLMNOPQRSTUVWXYZabcdefghijklmnopqrstuvwxyz;"/?0123456789
 10 PT ABCDEFGHIJKLMNOPQRSTUVWXYZabcdefghijklmnopqrstuvwxyz;"/?0123456789

Greek and Math Symbols

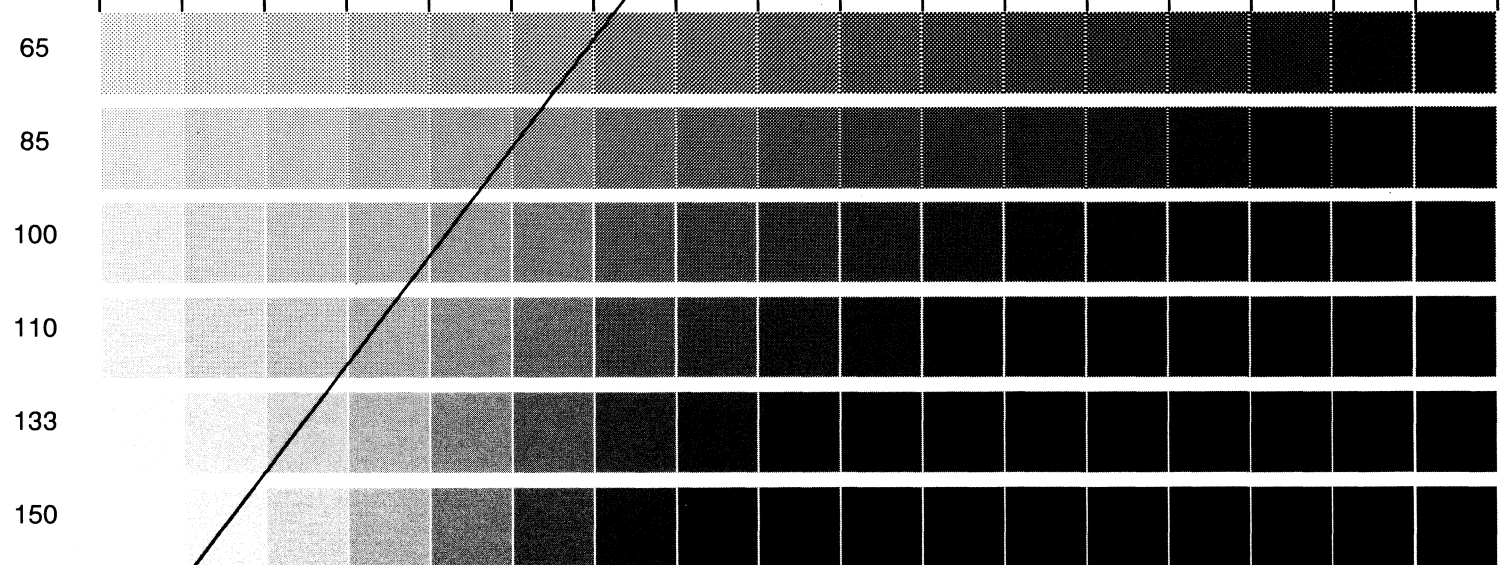
4 PT ΑΒΓΔΕΞΘΙΚΑΜΝΟΠΦΡΣΤΥΩΧΨΖαβγδεξθικλμνοπφρστυωχψζ≧≦≠><><>≡
 6 PT ΑΒΓΔΕΞΘΙΚΑΜΝΟΠΦΡΣΤΥΩΧΨΖαβγδεξθικλμνοπφρστυωχψζ≧≦≠><><>≡
 8 PT ΑΒΓΔΕΞΘΙΚΑΜΝΟΠΦΡΣΤΥΩΧΨΖαβγδεξθικλμνοπφρστυωχψζ≧≦≠><><>≡
 10 PT ΑΒΓΔΕΞΘΙΚΑΜΝΟΠΦΡΣΤΥΩΧΨΖαβγδεξθικλμνοπφρστυωχψζ≧≦≠><><>≡



Isolated Characters


e	m	1	2	3	a
4	5	6	7	o	.
8	9	0	h	l	B

MESH HALFTONE WEDGES




MEMORIAL DRIVE, ROCHESTER, NEW YORK 14623

ROCHESTER INSTITUTE OF TECHNOLOGY, ONE LOMB



032E 0
1253 1
223E 2
33EB 3
4523 4
5523 5
62E5 6



032E 0
1253 1
223E 2
33EB 3
4523 4
5523 5
62E5 6



032E 0
1253 1
223E 2
33EB 3
4523 4
5523 5
62E5 6



032E 0
1253 1
223E 2
33EB 3
4523 4
5523 5
62E5 6

RIT ALPHANUMERIC RESOLUTION TEST OBJECT, RT-171

PRODUCED BY GRAPHIC ARTS RESEARCH CENTER

CONTRIBUTIONS FROM THE MUSEUM OF PALEONTOLOGY

(Continuation of Contributions from the Museum of Geology)

UNIVERSITY OF MICHIGAN

Editor: EUGENE S. McCARTNEY

The series of contributions from the Museum of Paleontology was inaugurated to provide a medium for the publication of papers based entirely or principally upon the collections in the Museum. When the number of pages issued is sufficient to make a volume, a title-page and a table of contents will be sent to libraries on the mailing list, and also to individuals upon request. Communications with reference to exchange or purchase of copies should be directed to the Librarian, General Library, University of Michigan.

VOLUME I

The Stratigraphy and Fauna of the Hackberry Stage of the Upper Devonian, by Carroll Lane Fenton and Mildred Adams Fenton. Pages xi + 260, 45 plates, 9 text figures and 1 map. Cloth. \$2.75 net.

VOLUME II

Consisting of 14 papers. With 41 plates, 39 text figures and 1 map. Pp. ix + 240. Cloth \$3.00. Postage extra.

Parts sold separately in paper covers

1. A Possible Explanation of Fenestration in the Primitive Reptilian Skull, with Notes on the Temporal Region of the Genus *Dimetrodon*, by E. C. Case. Pages 1-12, with 5 illustrations. Price \$.30.
2. Occurrence of the Collingwood Formation in Michigan, by R. Ruedemann and G. M. Ehlers. Pages 13-18. Price, \$.15.
3. Silurian Cephalopods of Northern Michigan, by Aug. F. Foerste. Pages 19-104, with 17 plates and 2 text figures. Price, \$1.00.
4. A Specimen of *Stylemys nebrascensis* Leidy, with the Skull Preserved, by E. C. Case. Pages 87-91, with 7 text figures. Price, \$.20.
5. Note on a New Species of the Eocene Crocodylian *Allognathosuchus*, *A. wartheni*, by E. C. Case. Pages 93-97, with 1 plate and 1 text figure. Price, \$.20.
6. Two New Crinoids from the Devonian of Michigan, by G. M. Ehlers. Pages 99-104, with 1 plate. Price, \$.20.
7. New Brachiopods from the Warsaw Formation of Wayne County, Kentucky, by G. M. Ehlers and M. S. Chang. Pages 105-111, with 1 plate. Price, \$.20.

(Continued on inside of back cover)

ADDITIONAL NOTES ON NEPHRITICERINA

By AUG. F. FOERSTE

THE type of *Nephriticerina alpenensis* showed very well the rate of enlargement of the conch, its lengthwise curvature, the ornamentation of the surface of its shell, the location of the siphuncle and the form of one of its segments. It was very misleading, however, when an attempt was made to determine the character of its aperture. A second specimen, from the same locality and horizon, presents an entirely different appearance along the upper part of its living chamber, and one much more likely to be correct. Hence it is figured and described in the following lines. It fails, however, to reveal some of the features well shown by the first specimen, such as the ornamentation of the surface of the shell and the location and character of the siphuncle.

Nephriticerina alpenensis Foerste

(Plate I, Figs. 1 A, B; Text Fig. 1 A, B)

Nephriticerina alpenensis Foerste, Contrib. Mus. Geol. Univ. Michigan, Vol. 2, no. 9, p. 195, 1927.

A second specimen of *Nephriticerina*, from the same locality and horizon as the type of *Nephriticerina alpenensis*, is assumed to belong to the same species. This specimen is a cast of the interior of the living chamber and is of interest chiefly because it gives a more accurate idea of the form of the aperture than could be obtained from the specimen described first. The margin of this aperture, at least in the second specimen, is approximately directly transverse to the curving central axis of the chamber, except on its convexly curved ventral side, where it curves downward for a distance of about 16 mm., producing a hyponomic sinus about 40 mm. wide at its top. The chamber is strongly depressed dorso-

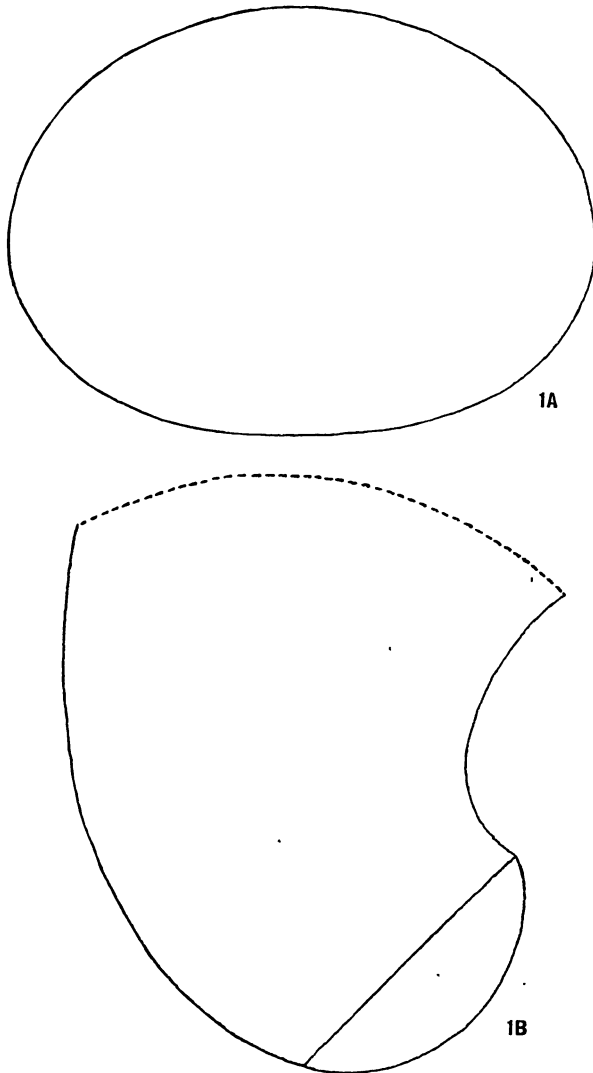


FIG. 1. *Nephriticerina alpenensis* Foerste. Same specimen as that represented on Plate I. *A*, cross-section with the ventral part of the outline at the top of the figure; *B*, lateral view, outlining more distinctly the suture of the septum at the base of the living chamber. There is no trace of the siphuncle. For the latter see Contributions from the Museum of Geology, University of Michigan, Vol. 2, Plate V, Figure 5, 1927.

ventrally. At the aperture its lateral diameter is 79 mm. and its dorso-ventral one is 59 mm. The corresponding diameters at the bottom of the specimen are estimated at 57 mm. and 36 mm. The dorsal side of the cross-section is distinctly more flattened than the ventral side. Along the convexly curved ventral outline of the chamber the level of the highest part of the aperture is 80 mm. above the suture of the septum at its base. Along the concavely curved dorsal outline this interval is about 40 mm. The concavity of the septum at its base is 15 mm. Its maximum concavity appears to be dorsad of the center of the conch. The base of the specimen is broken in such a manner that no trace of the siphuncle is retained. In the absence of any trace of the vertical ribs on the surface of the shell the reference of this specimen to *Nephriticerina* can be regarded as only tentative, but the correctness of this reference is highly probable in view of the occurrence of this specimen at the same locality and horizon as the genotype.

Locality and horizon. — From the quarry of the Michigan Alkali Company, at Alpena, Michigan, in the Alpena limestone. Specimen No. 10777 in the Museum of Paleontology, University of Michigan.

PLATE I

FIG. 1. *Nephriticerina alpenensis* Foerste. — *A*, ventral view, showing the outline of the aperture with its hyponomic sinus. The lower part of the specimen is crushed; *B*, lateral view of the same specimen, showing the rate of its lengthwise curvature. See also Figure 1*A* and *B* on page 152. Specimen No. 10777, Museum of Paleontology, University of Michigan.

PLATE I



1A



1B

(Continued from inside of front cover)

8. The Richmond Formation of Michigan, by R. C. Hussey. Pages 113-187 with 11 plates, 12 text figures and 1 map. Price, \$.75.
9. Devonian Cephalopods from Alpena in Michigan, by Aug. F. Foerste. Pages 189-208, with 5 plates. Price, \$.35.
10. The Vertebral Column of *Coelophysis* Cope, by E. C. Case. Pages 209-222, with 1 plate and 9 text figures. Price, \$.25.
11. A New Species of Trionychid Turtle, *Amyda nelsoni*, from the Eocene Beds of Southwestern Wyoming, by E. C. Case. Pages 223-226, with 1 plate and 3 text figures. Price, \$.20.
12. A Complete Phytosaur Pelvis from the Triassic Beds of Western Texas, by E. C. Case. Pages 227-229, with 1 plate. Price, \$.20.
13. Discovery of a Hamilton Fauna in Southeastern Michigan, by G. M. Ehlers and Mary E. Cooley. Pages 231-236. Price, \$.15.
14. *Anisotrypa waynensis*, a New Bryozoan from the Warsaw Formation of Kentucky, by Charles F. Deiss, Jr. Pages 237-239, with 2 plates. Price, \$.20.

VOLUME III

1. Indications of a Cotylosaur and of a New Form of Fish from the Triassic Beds of Texas, with Remarks on the Shinarump Conglomerate, by E. C. Case. Pages 1-14, with 1 plate. Price, \$.25.
2. Fossil Fishes from the Triassic of Texas, by Aldred S. Warthin, Jr. Pages 15-18, with 1 plate. Price, \$.20.
3. Contributions to the Geology of Foxe Land, Baffin Island, by Laurence M. Gould, Aug. F. Foerste and Russell C. Hussey. Pages 19-76, with 17 plates, 1 text figure and 1 map. Price, \$.75.
4. Cystoids from the Trenton Rocks of Michigan, by Russell C. Hussey. Pages 77-79, with 1 plate. Price, \$.20.
5. Description of a Nearly Complete Skeleton of *Ostodolepis brevispinatus* Williston, by E. C. Case. Pages 81-107, with 3 plates and 12 text figures. Price, \$.35.
6. The Color Patterns of Fossil Cephalopods and Brachiopods, with Notes on Gasteropods and Pelecypods, by Aug. F. Foerste. Pages 109-150, with 5 plates. Price, \$.50.
7. Additional Notes on Nephriticerina, by Aug. F. Foerste. Pages 151-154, with 1 plate and 1 text figure. Price, \$.15.

