

Genetic Polymorphisms in *CYP17*, *CYP3A4*, *CYP19A1*, *SRD5A2*, *IGF-1*, and *IGFBP-3* and Prostate Cancer Risk in African-American Men: The Flint Men's Health Study

Aruna V. Sarma,^{1,2*} Rodney L. Dunn,¹ Leslie A. Lange,³ Anna Ray,⁴
Yunfei Wang,³ Ethan M. Lange,^{3,5} and Kathleen A. Cooney^{1,4}

¹Department of Urology, University of Michigan Medical School, Ann Arbor, Michigan

²Department of Epidemiology, University of Michigan School of Public Health, Ann Arbor, Michigan

³Department of Genetics, University of North Carolina, Chapel Hill, North Carolina

⁴Department of Internal Medicine, University of Michigan Medical School, Ann Arbor, Michigan

⁵Department of Biostatistics, University of North Carolina, Chapel Hill, North Carolina

BACKGROUND. Association studies have examined the significance of several candidate genes based on biological pathways relevant to prostate carcinogenesis, including both the androgen and insulin-like growth factor pathways. Clinical and epidemiologic evidence suggest that androgens, specifically testosterone and dihydrotestosterone (DHT) are important not only in normal prostate growth but in the pathogenesis of prostate cancer. Similarly, the insulin-like growth factor-1 (IGF-1) signaling pathway regulates both cellular proliferation and apoptosis. Therefore, genes involved in the biosynthesis, activation, metabolism and degradation of androgens and the stimulation of mitogenic and antiapoptotic activities of prostate epithelial cells represent important candidates for affecting the development and progression of prostate cancer.

METHODS. Using resources from the Flint Men's Health Study, a population-based case control study of African-American men aged 40–79, we evaluated the associations between selected single-nucleotide polymorphisms (SNPs) in the *CYP17*, *CYP3A4*, *CYP19A1*, *SDR5A2*, *IGF1*, and *IGFBP3* genes and prostate cancer diagnosis in 473 men (131 prostate cancer cases and 342 disease-free controls).

RESULTS. We found a significant association between prostate cancer and selected *CYP17* SNP genotypes, with the heterozygous genotype conferring decreased risk. Suggestive evidence for association between IGF1 SNPs and prostate cancer were also found. No significant associations were observed between SNPs in the other genes and prostate cancer.

CONCLUSIONS. These findings suggest that variation in or around *CYP17* and/or *IGF1* may be associated with prostate cancer development in the African-American population. Additional studies are needed to determine whether these polymorphisms are indeed associated with prostate cancer risk in African Americans. *Prostate* 68: 296–305, 2008.

© 2007 Wiley-Liss, Inc.

KEY WORDS: single nucleotide polymorphism; African-American; prostate cancer

INTRODUCTION

Prostate cancer is the most common cancer among men in the United States with an expected 218,890 new cases and 27,050 deaths in 2007 [1]. In addition to increasing age, the etiology of prostate cancer suggests that race is one of the most important recognized risk factors for the disease [2]. African-American men have an approximately 1.6-fold greater chance of being

Grant sponsor: Department of Defense, Prostate Cancer Research Program; Grant number: DAMD17-03-0270; Grant sponsor: National Institutes of Health; Grant numbers: P50 A69568, R01 CA79596.

*Correspondence to: Aruna V. Sarma, PhD, Assistant Research Professor, 1500 E. Medical Center Drive, Ann Arbor, MI 48109-0759.
E-mail: asarma@umich.edu

Received 17 September 2007; Accepted 4 October 2007

DOI 10.1002/pros.20696

Published online 28 December 2007 in Wiley InterScience

(www.interscience.wiley.com).

diagnosed with prostate cancer compared to Caucasian men and a 2.5-fold greater chance of dying from the disease [3]. Numerous studies have demonstrated that positive family history is a strong risk factor for prostate cancer [4,5]. Genetic association studies are designed to identify genetic variants that increase the risk of developing disease. Unfortunately, despite their increased risk, African Americans are typically under-represented in genetic association studies of prostate cancer.

Prostate cancer association studies have focused on candidate genes based on biological pathways relevant to prostate carcinogenesis, including both the androgen and insulin-like growth factor pathways. Clinical and epidemiologic evidence suggest that androgens, specifically testosterone and dihydrotestosterone (DHT) are important not only in normal prostate growth but in the pathogenesis of prostate cancer. Androgens exert their effect via binding to the androgen receptor (AR) which subsequently acts as a transcriptional modifier of a variety of genes by binding to an androgen response element [6]. Polymorphic variants have been described in genes involved in the biosynthesis, activation, metabolism and degradation of androgens [7]. The insulin-like growth factor-1 (IGF-1) signaling pathway regulates both cellular proliferation and apoptosis [8]. Bioavailability of IGF-1 is modulated by a family of IGF binding proteins with over 90% of circulating IGF-1 bound in a complex with IGF binding protein-3 (IGFBP-3) [8]. Epidemiologic evidence suggests that higher serum levels of IGF-1 compared to IGFBP-3 are associated with increased risk of prostate cancer [9]. Polymorphic alleles in the *CYP17*, *CYP3A4*, *CYP19*, *5 α -reductase*, *IGF-1* and *IGFBP-3* genes have been associated with prostate cancer in several studies [7].

SRD5A2, located on chromosome 2 (2p23), encodes the steroid 5 α -reductase type 2 enzyme, a membrane-bound enzyme which catalyzes the irreversible conversion of testosterone into the main prostatic androgen, DHT [10]. Certain *SRD5A2* polymorphisms may encode for 5 α -reductase variants with different activities, likely attributable to altered mRNA stability [11]. Levels of 5 α -reductase-2 expression are greater in prostate cancer cells than in benign prostatic cells [12]. It has been hypothesized that polymorphic variants of the *SRD5A2* gene influence 5 α -reductase-2 activity. Notably, a substitution of valine to leucine in codon 89 in exon 1 of the 5 α -reductase enzyme gene has been associated with varying levels of 5 α -reductase-2 activity and with prostate cancer risk [13,14].

Two genes which encode for the cytochrome p-450 enzymes, *CYP17*, located on chromosome 10 (10q24.32) and *CYP3A4* located on chromosome 7

(7q21.1), influence the rate of androgen metabolism [15,16]. Specifically, the *CYP17* enzyme is the rate-limiting step in biosynthesis from 17- α hydroxylase and 17,20-lyase [15]. The thymine to cytosine substitution in the 5' untranslated promoter region of the *CYP17* gene has been associated with a 1.2- to 2.8-fold increased risk of prostate cancer in several studies [17,18]. Early studies suggested that the T to C substitution results in an additional Sp1-binding site (CCACC box) in the promoter region of the gene thus influencing androgen concentrations [19]. The *CYP3A4* gene involved in the oxidation of testosterone metabolizes the hormone to less active metabolites [16]. A germ-line variant in the 5' regulatory region of the *CYP3A4* gene that substitutes an alanine for a glycine at codon 293 has been associated with a 1.7- to 9.5-fold increase in risk for prostate cancer [16,20].

The *CYP19* gene is located on chromosome 15 (15q21.1) and encodes the enzyme aromatase that catalyzes the irreversible conversion of androstenedione to estrone and testosterone to estradiol [21]. Aromatase is present in the gonads and in the extragonadal tissue, including the prostate and adipose tissue. Aromatase mRNA and protein have both been detected in benign prostatic hyperplasia (BPH) and prostate cancer tissue [21]. Few studies have investigated the role of *CYP19* SNPs in the development of prostate cancer [22,23].

Polymorphisms in the *IGF-1* and *IGFBP-3* genes have been found to be associated with serum IGF-1 and IGFBP-3 concentrations [24]. As serum concentrations of these growth factors and binding proteins have been demonstrated to influence prostate cancer risk [9], it has been hypothesized that these polymorphisms would be associated with increased risk of disease. Previous studies that have investigated the role of genetic variation in IGF-1 and IGFBP-3 in relation to prostate cancer risk have focused solely on a (CA)_n in the *IGF-1* gene [7] and a single polymorphism in the promoter region of the *IGFBP-3* gene [24].

Given the increased risk of prostate cancer in African-American men and the under-representation of African Americans in past genetic association studies, the goal of the current study was to investigate the association between prostate cancer and androgen and IGF-common and haplotype mapping selected single-nucleotide polymorphisms (SNPs) in the *CYP17*, *CYP3A4*, *CYP19A1*, *SDR5A2*, *IGF-1*, and *IGFBP-3* genes using samples from the Flint Men's Health Study. This study of genes involved in the androgen and IGF pathways should provide additional and important insight into the genetic basis of the development and progression of prostate cancer.

MATERIALS AND METHODS

The Flint Men's Health Study

In 1996, a probability sample of 943 African-American men was selected from households located in Genesee County, Michigan to participate in a study of prostate cancer [25,26]. Of the 817 men who agreed to participate (87% response rate), 87 were determined to be ineligible due to a history of prostate cancer or a prior operation on the prostate gland and excluded from the study. Trained interviewers from the University of Michigan Institute for Social Research contacted the 730 eligible subjects, and performed a detailed in-home interview which covered information on potential risk factors for prostate cancer; general health and medical history; and socio-demographic information. At the conclusion of the interview, voluntary participation in a comprehensive urologic examination (digital rectal exam (DRE), transrectal ultrasound (TRUS) and a screening serum PSA measurement), was elicited. Prostate biopsy was recommended in individuals with an elevated PSA (≥ 4.0 ng/ml) or suspicious DRE. 379 of the 730 men who completed the interview participated in the clinical examination component of the study. After exclusion of men who were determined to be biopsy positive for prostate cancer at baseline and/or who subsequently developed prostate cancer after baseline (included in the present analyses as cases), a sufficient DNA sample was available for genotyping on 342 of the remaining controls.

Prostate cancer case recruitment from the same community was initiated in 1999. Eligible men include those who were between the ages of 40–79 at time of prostate cancer diagnosis (between 1995 and 2002). Cases completed a detailed epidemiologic interview as described above for controls and provided a blood sample. Diagnosis of prostate cancer was confirmed by review of pathology reports or medical records, and age at diagnosis calculated from the date of the first biopsy positive for prostate cancer.

A total of 136 cases were ultimately recruited to participate in the study. A sufficient DNA sample was available for genotyping on 131 cases. Informed consent was obtained from all study participants and the research protocol was approved by the University of Michigan Institutional Review Board. For both cases and controls, genomic DNA was isolated from whole blood using the Puregene DNA Purification Kit (Gentra Systems, Minneapolis, MN).

SNP Selection and Genotyping Methods

We selected 18 SNPs in the *CYP3A4* (3 SNPs), *CYP17* (4 SNPs), *CYP19A1* (1 SNP), *SDR5A2* (3 SNPs), *IGF1* (5 SNPs), and *IGFBP3* (2 SNPs) genes for genotyping in

the FMHS sample. Eleven of these SNPs were previously reported to be associated with prostate cancer [7,21,27] and breast cancer [28] status. Two SNPs in the *SDR5A2* gene (rs9282858, rs9332964) and 3 SNPs in the *IGF-1* gene (rs1106381, rs12423791, rs5742723) were homozygous for the wild type allele in all subjects and therefore are not included leaving a total of 13 SNPs for the current analyses (Fig. 1).

Genotyping was performed by BioServe Biotechnologies Ltd. (Laurel, MD) using the MassARRAY iPLEX™ platform, a PCR process and mass spectrometry based system (Sequenom, CA). The genotyping

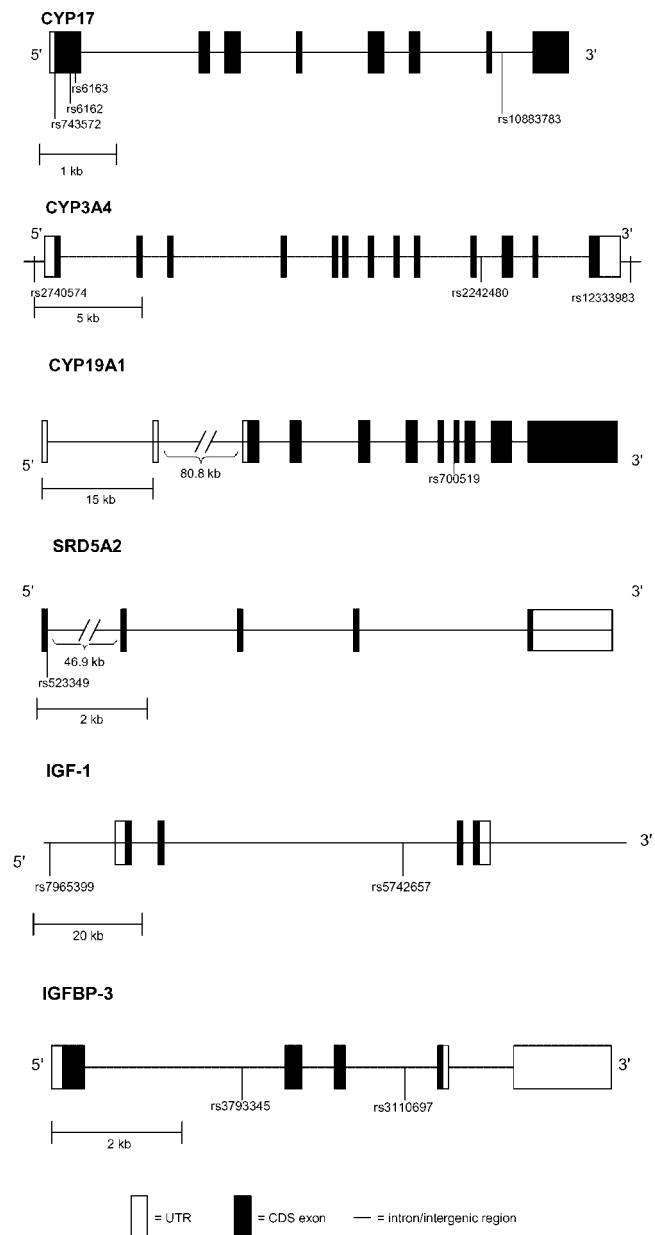


Fig. 1. Selected SNP locations for *CYP17A1*, *CYP3A4*, *CYP19A1*, *SDR5A2*, *IGF-1*, and *IGFBP-3* genes.

assays were custom developed using the MassARRAY Assay Designer 3.0. All PCR and extension primers were synthesized at BioServe. Four positive controls for each assay and four no-template controls were included per 384-well plate. The quality control used for this high-throughput genotyping consists of repeated assays on ~10% of randomly selected samples from each experiment as well as the inclusion of blinded controls. The genotyping results of the DNA as a "sample" and as a "quality control duplicated sample" were compared to obtain an overall concordance level of 99.45%.

Statistical Analysis

For each SNP, the observed genotype distribution was tested for consistency with Hardy–Weinberg equilibrium expected proportions using Pearson's chi-square test in SAS (SAS version 9.1, Cary NC). Lewontin's D' statistic [29] and the squared correlation statistic Δ^2 [30] were used to estimate the degree of linkage disequilibrium and correlation between all possible pair-wise combinations of SNPs in the same gene using the computer software GOLD (www.sph.umich.edu/csg/abecasis/gold/index.html). Estimated proportion of African ancestry for each study participant was obtained using the statistical software Structure [31] as described previously [32]. To avoid potential bias due to the possibility of the younger sample of controls being diagnosed with prostate cancer at a later age, age was calculated based on the most recent date of follow-up for both cases and controls (July 29, 2002). For controls who died before this date, date of death was used to calculate age.

SNP association. For each SNP, unconditional multi-variable logistic regression models were used to test whether SNP alleles/genotypes were associated with prostate cancer. Specifically, we conducted both allelic-based (using 1 degree of freedom likelihood ratio tests) and genotype-based (using 2 degree of freedom likelihood ratio tests) association tests. For the genotype-based association tests, no genetic mode-of-inheritance models were assumed. Two covariate-adjusted models were analyzed: the first adjusting for age and the second adjusting for age and estimated percent African ancestry.

Haplotype analysis. Tests of haplotype effects were performed using a score test developed by Schaid et al. [33] and implemented in Haplo.Stat [33]. This approach uses EM derived haplotype frequency estimates to assign probabilistic weights to every haplotype pairing (diplotype) that are consistent with the observed genotype data rather than assigning the "most likely"

diplotype to an individual. Statistical differences in overall haplotype frequencies (excluding haplotypes with frequency less than 3%) were tested for association with prostate cancer. Covariate model adjustment was made for age, and for both age and estimated proportion of African descent. In addition to testing for an overall difference in haplotype frequencies, specific individual haplotype effects were also tested.

RESULTS

The sample consisted of 473 (131 prostate cancer cases, 342 disease-free controls) African-American subjects with both genotype and phenotype data. Mean age overall was 63.5 years (SD = 10.0) with cases being older than controls (cases mean age = 67.2 years, SD = 8.6; controls mean age = 62.1 years, SD = 10.1; $P < 0.0001$). 21.4% of cases and 17.0% of controls reported a family history of prostate cancer in a first degree relative. There was no statistical difference in mean percent African descent between cases (70.5%) and controls (70.6%). Characteristics for the 131 prostate cancer cases are presented in Table I. The positions and corresponding observed genotype frequencies of the identified SNPs in all 473 FMHS case and control subjects are depicted in Table II.

The observed distributions for genotype data for the *CYP3A4*, *CYP19A1*, *SDR5A2*, *IGF1*, and *IGFBP3* SNPs were found to be consistent with expected Hardy–Weinberg equilibrium proportions in both the case and control samples ($P > 0.05$, data not shown). Observed genotype frequencies for some *CYP17* SNPs were, however, not consistent with Hardy–Weinberg equilibrium. Specifically, SNPs rs6163, rs6162, and rs743572 were all found to have genotypes with frequencies that

TABLE I. Characteristics of Men With Prostate Cancer (n = 131)

Characteristic	Mean (SD) or n (%)
Age at diagnosis (years)	63.5 (8.7)
Serum prostate-specific antigen at diagnosis (ng/ml)	24.3 (106.3)
Surgery (% yes)	63 (48.1%)
Family history (% yes)	28 (21.4%)
Stage	
Localized (T1)	29 (23.0%)
Locally advanced (T2)	78 (61.9%)
Regional (T3)	19 (15.1%)
Gleason	
2–6	37 (28.9%)
7	77 (60.2%)
8–10	14 (10.9%)
Clinically aggressive prostate cancer (% yes)	95 (72.5%)

TABLE II. Frequencies of Selected SNPs Among 131 Men With Prostate Cancer and 342 Controls

SNP / genotype	Chromosome	Location of SNP	Nucleotide change	Prostate cancer cases (n = 131)	Controls (n = 342)	Allelic-based age adjusted (1 df) P-value	Genotype-based age adjusted (2 df) P-value	Age adjusted OR (95% CI)
CYP17								
<i>rs10883783</i>	10q24.3	Intron 7	A to T	89 (67.94)	231 (67.74)	—	—	—
AA				36 (27.48)	97 (28.45)			0.93 (0.58, 1.49)
AT				6 (4.58)	13 (3.81)	0.99	0.88	1.22 (0.44, 3.39)
TT								
<i>rs6163</i>	10q24.3	Exon 1 (Codon 65)	G to T	54 (41.22)	114 (33.43)	—	—	—
GG				52 (39.69)	192 (56.31)			0.56 (0.35, 0.88)
GT				25 (19.08)	35 (10.26)	0.83	0.0014	1.59 (0.85, 2.98)
TT								
<i>rs6162</i>	10q24.3	Exon 1 (Codon 46)	C to T	53 (40.46)	112 (33.23)	—	—	—
CC				53 (40.46)	190 (56.38)			0.57 (0.36, 0.90)
CT				25 (19.08)	35 (10.39)	0.80	0.0018	1.59 (0.85, 2.97)
TT								
<i>rs743572</i>	10q24.3	5'-UTR	T to C	52 (41.27)	106 (32.92)	—	—	—
TT				51 (40.48)	183 (56.83)			0.55 (0.35, 0.88)
CT				23 (18.25)	33 (10.25)	0.97	0.0028	1.51 (0.79, 2.88)
CC								
CYP3A4								
<i>rs12333983</i>	7q21.1	3'-UTR	A to T	55 (44.00)	141 (43.52)	—	—	—
AA				57 (45.60)	139 (42.90)			1.11 (0.71, 1.74)
AT				13 (10.40)	44 (13.58)	0.75	0.62	0.79 (0.39, 1.60)
TT								
<i>rs2242480</i>	7q21.1	Intron 10	A to G	67 (51.15)	183 (53.51)	—	—	—
AA				53 (40.46)	133 (38.89)			1.07 (0.69, 1.66)
AG				11 (8.40)	26 (7.60)	0.55	0.82	1.28 (0.59, 2.77)
GG								
<i>rs2740574</i>	7q21.1	5'-UTR (-293)	G to A	45 (35.16)	150 (44.25)	—	—	—
GG				66 (51.56)	149 (43.95)			1.51 (0.96, 2.37)
GA				17 (13.28)	40 (11.80)	0.14	0.20	1.39 (0.71, 2.72)
AA								
CYP19								
<i>rs700519</i>	15q21.1	Exon 8 (Codon 264)	C to T	91 (69.47)	236 (69.21)	—	—	—
CC				37 (28.24)	93 (27.27)			0.97 (0.61, 1.53)
CT				3 (2.29)	12 (3.52)	0.67	0.85	0.68 (0.18, 2.61)
TT								

SRD5A2											
rs523349	GG	Exon 1 (Codon 89)	G to C	71 (54.20)	177 (51.91)					—	0.86 (0.56, 1.34)
	GC			51 (38.93)	136 (39.88)						0.72 (0.32, 1.64)
	CC			9 (6.87)	28 (8.21)		0.36	0.65			
IGF-1											
rs5742657	AA	Intron 2	A to G	97 (74.62)	271 (82.12)					—	1.57 (0.94, 2.63)
	AG			30 (23.08)	58 (17.58)						7.69 (0.77, 77.10)
	GG			3 (2.31)	1 (0.30)		0.020	0.058			
rs7965399	TT	5'	T to C	62 (47.69)	181 (54.85)					—	1.42 (0.91, 2.21)
	TC			56 (43.08)	128 (38.79)						1.80 (0.82, 3.95)
	CC			12 (9.23)	21 (6.36)		0.056	0.16			
IGFBP-3											
rs3110697	GG	Intron 3	G to A	53 (40.46)	121 (35.59)					—	0.92 (0.58, 1.44)
	GA			61 (46.56)	159 (46.77)						0.69 (0.36, 1.31)
	AA			17 (12.98)	60 (17.65)		0.28	0.53			
rs3793345	TT	Intron 1	T to C	89 (67.94)	201 (58.94)					—	0.75 (0.48, 1.18)
	TC			39 (29.77)	125 (36.66)						0.44 (0.12, 1.63)
	CC			3 (2.29)	15 (4.40)		0.11	0.25			

were inconsistent with Hardy–Weinberg equilibrium ($P = 0.001$, for all three) in the larger control group. There was little evidence of historical recombination between these three *CYP17* SNPs (estimated pair-wise D' and Δ^2 estimates ranged from 0.99 to 1.0) in the control sample. *CYP17* SNP rs10883783 genotype distribution was consistent with Hardy–Weinberg equilibrium ($P = 0.57$). There was no evidence for recombination, but the estimated degree of correlation was modest, between rs10883783 and the three aforementioned *CYP17* SNPs (estimated $D' = 1.0$ and $\Delta^2 = 0.35$ between rs10883783 and rs743572 in the control sample).

Statistical analyses showed that genotype (using 2 df test) was significantly associated with prostate cancer for *CYP17* rs6163 ($P = 0.0014$), rs6162 ($P = 0.0018$), and rs743572 ($P = 0.0028$) SNPs, even after adjustment for multiple tests (conservative Bonferroni threshold value for family-wise error rate of $\alpha = 0.05$ is $P < 0.0038 = 0.05/13$; Table II). Specifically, heterozygotes were significantly at decreased risk of having prostate cancer compared to those with the homozygous wild type genotypes after adjustment for age. Further adjustment for percent African descent negligibly changed these results (data not shown). Because these three SNPs were in almost perfect linkage disequilibrium, the evidence for association between these SNPs and prostate cancer was nearly identical. No significant differences in genotype frequencies for *CYP17* SNP rs10883783 or any SNPs in the *CYP3A4*, *CYP19A1*, *SRD5A2* or *IGFBP-3*, genes were observed between prostate cancer cases and controls. A single *IGF-1* SNP, rs5742657, demonstrated a trend ($P = 0.058$) towards an association between genotype and prostate cancer.

There were no statistically significant differences in allele frequencies, after adjustment for multiple tests, for any of the SNPs studied (Table II). In fact, the difference in allele frequencies between prostate cancer cases and controls for *CYP17* SNPs rs6163, rs6162 and rs743572 were very modest (Table II) and thus the statistical significance observed for the genotype-based association tests for these SNPs was nearly entirely driven by the distribution of alleles into the different genotype categories within each group and not by differences in allele frequencies between the two groups. The marginal evidence for an association between *IGF-1* SNP rs5742657 and prostate cancer increased modestly using the 1 df allelic association test ($P = 0.02$).

In order to examine whether specific phased combinations of allelic variants were associated with prostate cancer status, we performed haplotype-based association analyses. Consistent with the 1 df single SNP analyses, no evidence for haplotype associations

with prostate cancer were detected with *CYP17*, *CYP3A4*, *CYP19A1*, *SDR5A2*, and *IGFBP3* (data not shown). Modest evidence for association between *IGF-1* haplotypes, defined by SNPs rs7965399 and rs5742657, and prostate cancer were observed after adjustment for age ($P = 0.052$) and age + percent African ancestry ($P = 0.061$; data not shown).

DISCUSSION

Using data from the FMHS, a population-based case control study among 473 African-American men aged 40–79, we sought to determine whether polymorphisms in the *CYP17*, *CYP3A4*, *CYP19A1*, *SDR5A2*, *IGF1*, and *IGFBP3* genes were associated with prostate cancer. All six genes were examined because of their involvement in either (1) the synthesis and conversion of testosterone to dihydrotestosterone and estradiol (androgen pathway) or (2) the stimulation of mitogenic and antiapoptotic activities of prostate epithelial cells (insulin-like growth factor pathway) and subsequent potential influence on disease risk. Our most interesting results were for SNPs in *CYP17*. In this study, we observed significant associations between *CYP17* SNPs rs6163, rs6162, and rs743572 genotypes and prostate cancer status. Specifically, we observed a strong decreased risk for prostate cancer in heterozygotes for these three *CYP17* SNPs. However, we did not observe any difference in allele frequencies between case and controls for these three *CYP17* SNPs. Previous evidence regarding associations between *CYP17* SNPs and prostate cancer has been mixed [34], however this is the first observation to our knowledge that suggests a protective effect of being heterozygous. Although this finding has not been observed by others, it should be noted that there have been very limited studies on African-American prostate cancer cases for any of these genes, including *CYP17* [35]. As noted previously, these three *CYP17* SNPs had genotype distributions in the controls that were not consistent with Hardy–Weinberg equilibrium. We took considerable efforts to validate the genotype data for these three SNPs, including retyping one of the SNPs in all samples using a Taqman SNP Genotyping Assay (Applied Biosystems, Foster City, CA) as well as directly sequencing ~20% of the samples. We note that the three SNPs are known from HapMap data to be in strong LD and our data were consistent with this previous finding. We also note that the validity of our statistical significance estimates from our 2 df statistical tests do not depend on the SNPs being in HWE.

CYP3A4 encodes an enzyme that catalyses the 6 β -hydroxylation of testosterone, suggesting that it may be involved in the oxidative metabolism of

testosterone. Genetic variants that affect *CYP3A4* activity could result in increased androgen levels. Previous studies have reported that the *CYP3A4* variants are positively associated with prostate cancer [16]. Specifically, among white and African-American subjects with prostate cancer, higher clinical grade and stage were significantly associated with the frequency of this allele [20]. Furthermore, racial variations in the frequency of *CYP3A4* alleles have also been reported [34]. However, consistent evidence regarding the contribution of alterations of *CYP3A4* to prostate cancer risk is lacking and has led to the hypothesis that prior observations between prostate cancer and *CYP3A4* may be attributed to LD with other genes, possibly *CYP3A5* [36]. In this study, we found no evidence of an association between prostate cancer and selected *CYP3A4* SNPs.

The *SRD5A2* gene product, 5 α -reductase type II, catalyzes the conversion of testosterone to dihydrotestosterone (DHT), its active metabolite. The possibility that different alleles of the *SRD5A2* gene may be associated with different levels of 5 α -reductase type II activity has been examined in numerous studies [13,37–39]. Furthermore, a higher *SRD5A2* activity in African-American men has been reported and supports observed ethnic differences in prostate cancer risk [40]. One missense substitution, a G to C transversion resulting in a valine to leucine substitution at codon 89 (V89L substitution, rs523349) has been hypothesized to reduce prostate cancer risk [37]. Although the V89L substitution is particularly common among Asians and purported to explain the low risk of prostate carcinoma in this population, several studies in white men have been unable to detect an association between the V89L variant and prostate cancer [41]. We observed no association between V89L genotypes and prostate cancer diagnosis in this population of African-American men.

The *CYP19A1* gene encodes the enzyme aromatase which plays a key role in the conversion of androgen to estrogen [21]. As the prostate is influenced by estrogen from peripheral sources as well as through aromatase activity within its stroma, it has been suggested that genetic variations in the aromatase genes, that is, *CYP19A1* alter an individual's risk of prostate cancer [21]. *CYP19A1* has been less well studied and although a few reports have suggested an association between the *CYP19A1* R264C alteration (rs700519) and prostate cancer risk [23], other studies, including the current study were unable to replicate these findings.

The *IGF-1* gene regulates cell proliferation, differentiation, apoptosis and transformation via the IGF-1 receptor with both paracrine and autocrine mechanisms and is required for the development of the prostate gland and reported to be involved with

prostate cancer [8]. IGF-1 also activates the androgen receptor directly in the absence of androgens suggesting that IGF-1 may be responsible for prostate cancer cell proliferation in both an androgen-dependent and -independent manner [42]. Previous studies that have investigated the role of genetic variation in the *IGF-1* gene in relation to prostate cancer risk have focused on a (CA)_n repeat sequence located approximately 1 kilobase (kb) upstream from the IGF-1 transcription start site. Results of these studies have been inconsistent. Only one study to our knowledge (The Multiethnic Cohort Study) has since examined more systematically the genetic variation at the IGF-1 locus [43]. Our findings are consistent with Cheng et al. [43] in that we observed differences in allele frequencies between cases and controls for SNPs rs7965399 and rs5742657. The direction of the effects, with increased risk for individuals with at least one copy of the variant allele, were the same as those reported in the African-American subset of the Multiethnic Cohort Study. Cheng et al. [43] observed strong correlations between variants across the locus suggesting the existence of one signal that was detected at several sites. Interestingly, the strongest signal was located in block 1, a noncoding region which also contains the (CA)_n repeat polymorphism previously identified to be associated with prostate cancer risk. Therefore it is possible that the (CA)_n repeat allele is in linkage disequilibrium with the other SNPs examined.

IGFBP-3, which is a major circulating IGF binding protein, binds to IGF-1, forming a complex that limits the IGF-1 bioavailability for binding to the IGF-1 receptor [8]. IGFBP-3 suppresses mitogenic and anti-apoptotic action of IGF-1 and is therefore, associated with decreased risks of prostate cancer [8]. Furthermore, plasma IGFBP-3 concentrations have been reported to be lower in African-American men which may partly explain the greater incidence of disease in this population [44]. Although a recent Physician's Health Study report observed that the presence of A/C polymorphism at position -202 in the promoter region of the gene was correlated with circulating levels of IGFBP-3, a study of U.S. veterans found no association between the IGFBP-3 C allele and prostate cancer. We found no association between our IGFBP-3 selected SNPs and prostate cancer status. There are no other studies to our knowledge that have examined these SNPs in relation to prostate cancer to date.

As described above, the associations between variants in *CYP17*, *CYP3A4*, *CYP19A1*, *SRD5A2*, *IGF-1*, and *IGFBP-3* and prostate cancer have been assessed in previous studies however, the findings are inconclusive. There are a number of possible explanations for the different results observed. Many of these studies have been limited by inclusion of primarily Caucasian

men and have reported findings on specific individual variants in the candidate genes. Variation in study design might also account for some of the inconsistency between findings.

There are several limitations in our study which must be addressed. First, the relatively small sample size potentially limits our statistical power to detect small genotype effects on prostate cancer status. Second, we genotyped a relatively small number of SNPs within the selected genes and it is possible that other SNPs within these genes may be associated with prostate cancer status in African Americans. Our SNP selection process was based primarily on SNPs in the *CYP17*, *CYP19A1*, *CYP3A4*, *SRD5A2*, *IGF-1*, and *IGFBP-3* genes that have been reported previously as being associated with prostate cancer.

In conclusion, our analysis of 473 African-American men with and without prostate cancer suggests that specific SNP genotypes in both the 5'-UTR and Exon 1 regions of the *CYP17* gene and intron 2 region of the *IGF-1* gene influence prostate cancer susceptibility. Given the strong LD between SNPs in the genotyped regions, it will be difficult to establish the underlying susceptibility polymorphism(s). Additional studies are needed to determine whether these polymorphisms are indeed associated with prostate cancer risk in African Americans.

REFERENCES

- Jemal A, Siegel R, Ward E, Murray T, Xu J, Thun MJ. Cancer Statistics, 2007. *CA: Cancer J Clin* 2007;57:43–66.
- Bostwick DG, Burke HB, Djakiew D, Euling S, Ho S, Landolph J, Morrison H, Sonawane B, Shifflett T, Waters DJ, Timms B. Human prostate cancer risk factors. *Cancer* 2004;101:2371–2490.
- Jemal A, Siegel R, Ward E, Murray T, Xu J, Smigal C, Thun MJ. Cancer Statistics, 2006. *CA: Cancer J Clin* 2006;56:106–130.
- Pienta KJ, Esper PS. Risk factors for prostate cancer. *Ann Intern Med* 1993;118:793–803.
- Whittemore AS, Wu AH, Kolonel LN, John EM, Gallagher RP, Howe GR, West DW, Teh CZ, Stamey T. Family history and prostate cancer risk in Black, White, and Asian men in the United States and Canada. *Am J Epidemiol* 1995;141:732–740.
- Singh A, Chau CH, Price DK, Figg WD. Mechanisms of disease: Polymorphisms of androgen regulatory genes in the development of prostate cancer. *Nat Clin Pract* 2005;2:101–107.
- Nam RK, Zhang WW, Trachtenberg J, Jewett MAS, Emami M, Vesprini D, Chu W, Ho M, Sweet J, Evans A, Toi A, Pollack M, Narod SA. Comprehensive assessment of candidate genes and serological markers for the detection of prostate cancer. *Cancer Epidemiol Biomarkers Prev* 2003;12:1429–1437.
- Jones J, Clemmons D. Insulin-like growth factors and their binding proteins: Biological actions. *Endocr Rev* 1995;16:3–34.
- Chan JM, Stampfer MJ, Giovannucci E, Ma J, Pollak M. Insulin-like growth factor I (IGF-I), IGF-binding protein-3 and prostate cancer risk: Epidemiological studies. *Growth Hormone & IGF Research* 2000;10(Suppl-1):S32–S33.
- Wilbert D, Griffin J, Wilson J. Characterization of the cytosol androgen receptor of the human prostate. *J Clin Endocrinol Metab* 1983;56:113–120.
- Reichardt J, Makridakis N, Henderson B, Yu M, Pike M, Ross R. Genetic variability of the human *SRD5A2* gene: Implications for prostate cancer risk. *Cancer Res* 1995;55:3973–3975.
- Bjelfman C, Soderstrom TG, Brekkan E, Norlen BJ, Egevad L, Unge T, Andersson S, Rane A. Differential gene expression of steroid 5 alpha-reductase-2 in core needle biopsies from malignant and benign prostatic tissue. *J Clin Endocrinol Metab* 1997;82:2210–2214.
- Makridakis N, Ross R, Pike M, Chang L, Stanczyk FZ, Kolonel LN, Shi CY, Yu M, Henderson B, Reichardt J. A prevalent missense substitution that modulates activity of prostatic steroid 5 alpha-reductase. *Cancer Res* 1997;57:1020–1022.
- Nam RK, Toi A, Vesprini D, Ho M, Chu W, Harvie S, Sweet J, Trachtenberg J, Jewett MAS, Narod SA. The V89L polymorphism of the *SRD5A2* gene predicts prostate cancer presence and progression. *Urology* 2000;57:199–204.
- Lewis DFV, Lee-Robichaud P. Molecular modelling of steroidogenic cytochromes P450 from families *CYP11*, *CYP17*, *CYP19* and *CYP21* based on the *CYP102* crystal structure. *J Steroid Biochem Mol Biol* 1998;66:217–233.
- Rebbeck TR, Jaffe JM, Walker AH, Wein AJ, Malkowicz SB. Modification of clinical presentation of prostate tumors by a novel genetic variant in *CYP3A4*. *J Natl Cancer Inst* 1998;90:1225–1229.
- Gsur A, Bernhofer G, Hinteregger S, Haidinger G, Schatzi G, Madersbacher S, Marberger M, Vutuc C, Micksche M. A polymorphism in the *CYP17* gene is associated with prostate cancer risk. *Int J Cancer* 2000;87:434–437.
- Haiman CA, Stampfer MJ, Giovannucci E, Ma J, Decalo NE, Kantoff PW, Hunter DJ. The relationship between a polymorphism in *CYP17* with plasma hormone levels and prostate cancer. *Cancer Epidemiol Biomarkers Prev* 2001;10:743–748.
- Carey AH, Waterworth D, Patel K, White D, Little J, Novelli P, Franks S, Williamson R. Polycystic ovaries and premature male pattern baldness are associated with one allele of the steroid metabolism gene *CYP17*. *Hum Mol Genet* 1994;3:1873–1876.
- Paris PL, Kupelian PA, Hall JM, Williams TL, Levin H, Klein EA, Casey G, Witte JS. Association between a *CYP3A4* genetic variant and clinical presentation in African-American prostate cancer patients. *Cancer Epidemiol Biomarkers Prev* 1999;8:901–905.
- Ntais C, Polycarpou A, Tsatsoulis A. Molecular epidemiology of prostate cancer: Androgens and polymorphisms in androgen-related genes. *Eur J Endocrinol* 2003;149:469–477.
- Latil A, Azzouzi R, Cancel G, Guillaume E, Cochran-Priollet B, Berthon P, Cussenot O. Prostate carcinoma risk and allelic variants of genes involved in androgen biosynthesis and metabolism pathways. *Cancer* 2001;92:1130–1137.
- Modugno F, Weissfeld JL, Trump DL, Zmuda JM, Shea P, Cauley JA, Ferrell RE. Allelic variants of aromatase and the androgen and estrogen receptors: Toward a multigenic model of prostate cancer risk. *Clin Cancer Res* 2001;7:3092–3096.
- Jernstom H, Deal C, Wilkin F, Chu W, Tao Y, Majeed N, Hudson T, Narod SA, Pollak M. Genetic and non-genetic factors associated with variation of plasma levels of insulin-like growth factor-1 and insulin-like growth factor binding protein-3 in healthy premenopausal women. *Cancer Epidemiol Biomarkers Prev* 2001;10:377–384.
- Heeringa SG, Alcsér KH, Doerr K, Strawderman M, Cooney K, Medbery B, Schottenfeld D. Potential selection bias in a

- community-based study of PSA levels in African-American men. *J Clin Epidemiol* 2001;54:142–148.
26. Cooney KA, Strawderman MS, Wojno KJ, Doerr KM, Taylor A, Alcer KH, Heeringa SG, Taylor JM, Wei JT, Montie JE, Schottenfeld D. Age-specific distribution of serum prostate-specific antigen in a community-based study of African-American men [Review] [20 refs]. *Urology* 2001;57:91–96.
 27. Coughlin SS, Hall IJ. A review of genetic polymorphisms and prostate cancer risk. *Ann Epidemiol* 2002;12:182–196.
 28. Canzian F, McKay J, Cleveland R, Dossus L, Biessy C, Rinaldi S, Landi S, Boillot C, Monnier S, Chajes V, Clavel-Chapelon F, Tehard B, Change-Claude J, Linseisen J, Lahmann P, Pischon T, Trichopoulos D, Trichopoulou A, Zilis D, Palli D, Tumino R, Vineis P, Berrino F, Bueno-de-Mesquita H, van Gils C, Peeters P, Pera G, Ardanaz E, Chirlaque M-D, Quiros J, Larranaga N, Martinez-Garcia C, Allen N, Key T, Bingham S, Khaw K-T, Slimani N, Norat T, Riboli E, Kantoff PW. Polymorphisms of genes coding for insulin-like growth factor 1 and its major binding proteins, circulating levels of IGF-I and IGFBP-3 and breast cancer risk: Results from the EPIC study. *Br J Cancer* 2006;94:299–307.
 29. Lewontin RC. The interaction of selection and linkage. I. General considerations; heterotic models. *Genetics* 1964;49:49–67.
 30. Devlin B, Risch N. A comparison of linkage disequilibrium measures for fine-scale mapping. *Genomics* 1995;29:311–322.
 31. Pritchard JK, Stephens M, Rosenberg NA, Donnelly P. Association mapping in structured populations. *Am J Human Genet* 2000;67:170–181.
 32. Amundadottir LT, Sulem P, Gudmundsson J, Helgason A, Baker A, Agnarsson BA, Sigurdsson A, Benediksdottir KR, Cazier JB, Sainz J, Jakobsdottir M, Kostic J, Magnusdottir DN, Ghosh S, Agnarsson K, Birgisdottir B, Le Roux L, Olafsdottir A, Blondal T, Andresdottir M, Gretarsdottir OS, Bergthorsson JT, Gudbjartsson D, Gylfason A, Thorleifsson G, Manolescu A, Kristjansson K, Geirsson G, Isaksson H, Douglas J, Johansson JE, Bälter K, Wiklund F, Montie JE, Yu X, Suarez BK, Ober C, Cooney KA, Gronberg H, Catalona WJ, Einarsson GV, Barkardottir RB, Gulcher JR, Kong A, Thorsteinsdottir U & Stefansson K. A common variant associated with prostate cancer in European and African Populations. *Nat Genet* 2006;38:652–658.
 33. Schaid DJ, Rowland CM, Tines DE, Jacobson RM, Poland GA. Score tests for association between traits and haplotypes when linkage phase is ambiguous. *Am J Human Genet* 2002;70:425–434.
 34. Gsur A, Feik E, Madersbacher S. Genetic polymorphisms and prostate cancer risk. *World J Urol* 2004;21:414–423.
 35. Ntais C, Polycarpou A, Ioannidis JPA. Association of the CYP17 gene polymorphism with the risk of prostate cancer: A meta-analysis. *Cancer Epidemiol Biomarkers Prev* 2003;12:120–126.
 36. Plummer SJ, Conti DV, Paris PL, Curran AP, Casey G, Witte JS. CYP3A4 and CYP3A5 genotypes, haplotypes, and risk of prostate cancer. *Cancer Epidemiol Biomarkers Prev* 2003;12:928–932.
 37. Makridakis NM, Ross RK, Pike MC, Crocitto LE, Kolonel LN, Pearce CL, Henderson BE, Reichardt JK. Association of missense substitution in SRD5A2 gene with prostate cancer in African-American and Hispanic men in Los Angeles, USA. *Lancet* 1999;354:975–978.
 38. Davis DL, Russell DW. Unusual length polymorphism in human steroid 5 α -reductase type 2 gene (SRD5A2). *Hum Mol Genet* 1993;2:820.
 39. Hsing AW, Chen C, Chokkalingam AP, Gao YT, Dightman DA, Nguyen HT, Deng J, Cheng J, Sesterhenn IA, Mostofi FK, Stanczyk FZ, Reichardt JKV. Polymorphic markers in the SRD5A2 gene and prostate cancer risk: A population-based case-control study. *Cancer Epidemiol Biomarkers Prev* 2001;10:1077–1082.
 40. Wu AH, Whittemore AS, Kolonel LN, John EM, Gallagher RP, West DW, Hankin J, Teh CZ, Dreon DM, Paffenbarger RS Jr. Serum androgens and sex hormone-binding globulins in relation to lifestyle factors in older African-American, white, and Asian men in the United States and Canada. *Cancer Epidemiol Biomarkers Prev* 1995;4:735–741.
 41. Ntais C, Polycarpou A, Ioannidis JPA. SRD5A2 gene polymorphisms, the risk of prostate cancer: A meta-analysis. *Cancer Epidemiol Biomarkers Prev* 2003;12:618–624.
 42. Culig Z, Hobisch A, Cronauer MV, Radmayr C, Trapman J, Hittmair A, Bartsch G, Klocker H. Androgen receptor activation in prostatic tumor cell lines by insulin-like growth factor- α , keratinocyte growth factor, and epidermal growth factor. *Cancer Res* 1994;54:5474–5478.
 43. Cheng I, Stram DO, Penney KL, Pike M, Le Marchand L, Kolonel LN, Hirschhorn J, Altshuler D, Henderson BE, Freedman ML. Common genetic variation in IGF1 and prostate cancer risk in the multiethnic cohort. *J Natl Cancer Inst* 2006;98:123–134.
 44. Platz EA, Pollak MN, Rimm EB, Majeed N, Tao Y, Willett WC, Giovannucci E. Racial variation in insulin-like growth factor-1 and binding protein-3 concentrations in middle-aged men. *Cancer Epidemiol Biomarkers Prev* 1999;8:1107–1110.