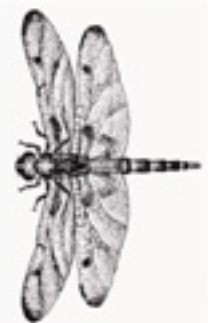
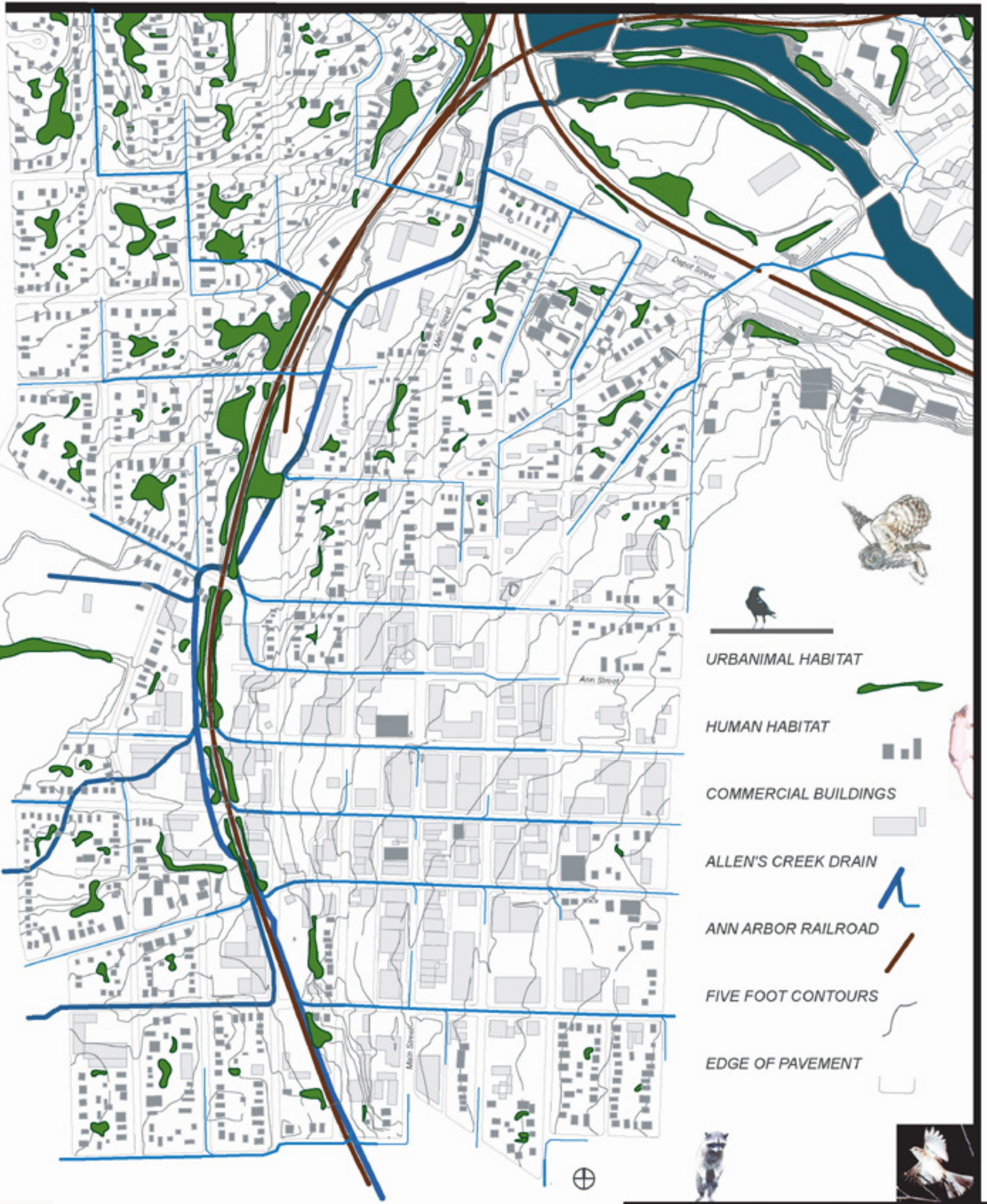


Ann Arbor Urbanimals

Nature in the built environment displays a remarkable resilience. We are surrounded by nature which inhabits areas as small as a crack in the sidewalk, to large residual spaces along railways, behind buildings, and between houses. Distinct from what is traditionally considered urban greenspace, the urbanimal habitat primarily occupies residual space. Brush areas on the interior of residential blocks provides habitat for squirrels, raccoons, and many others. Alleys provide safe passage and food, and storm drains create an underground highway for many city residents.



Emile Lauzzana
elauzzan@umich.edu

