

Fig. S2.1-1: gymnosperms & basal angiosperms

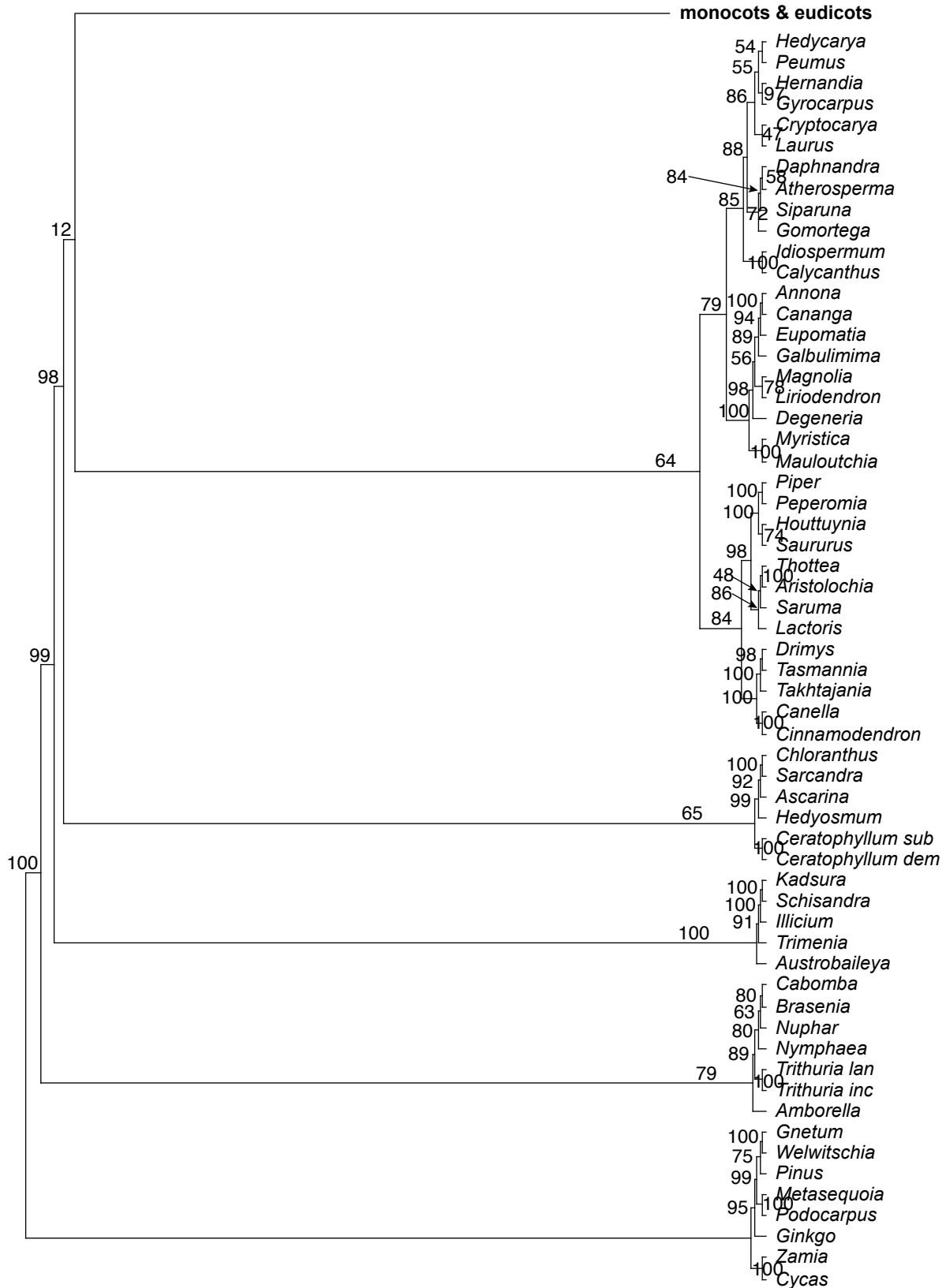


Fig. S2.1-2: monocots & basal eudicots

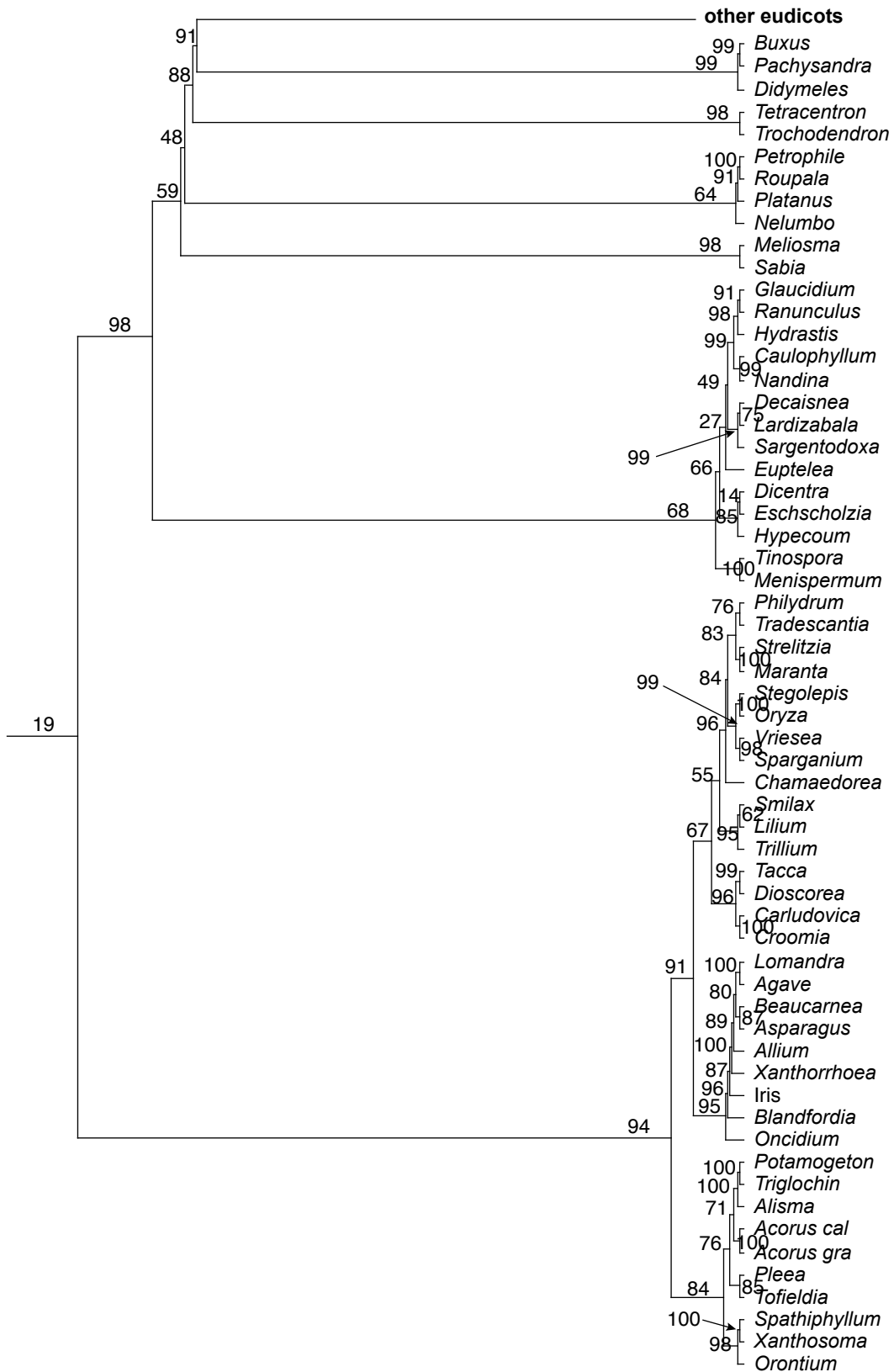


Fig. S2.1-3: Gunnerales/rosids exclusive of the COM-malvids

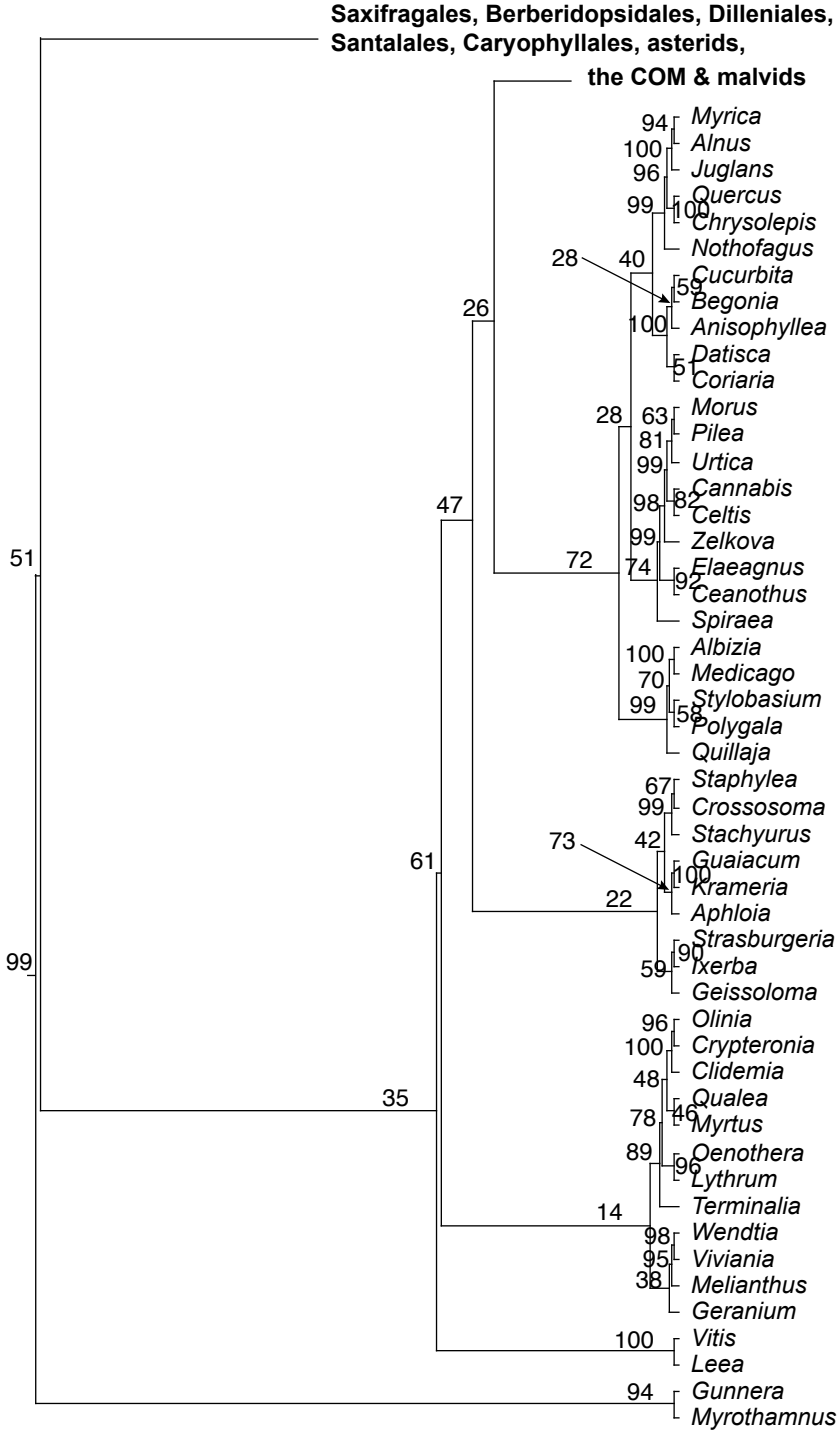


Fig. S2.1-4: the COM & malvids

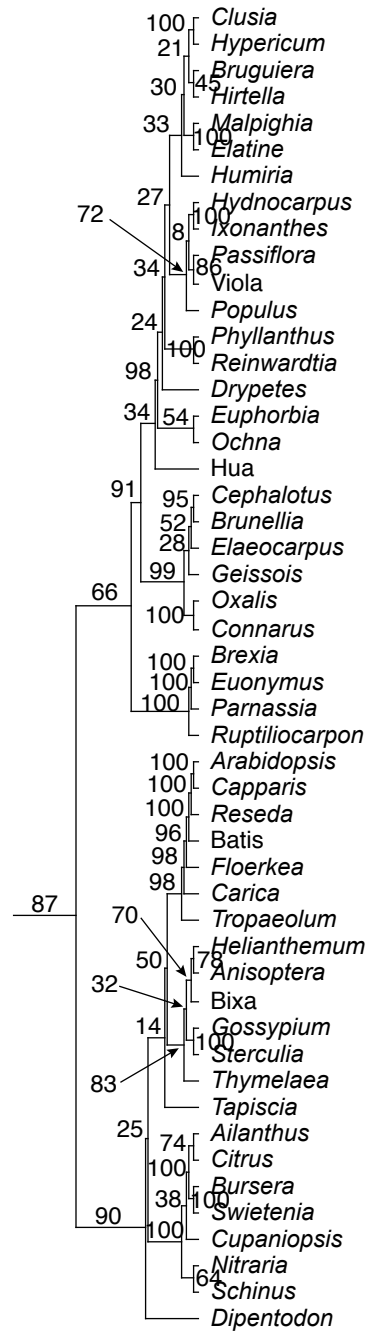




Fig. S2.1-6: Cornales/campanulids

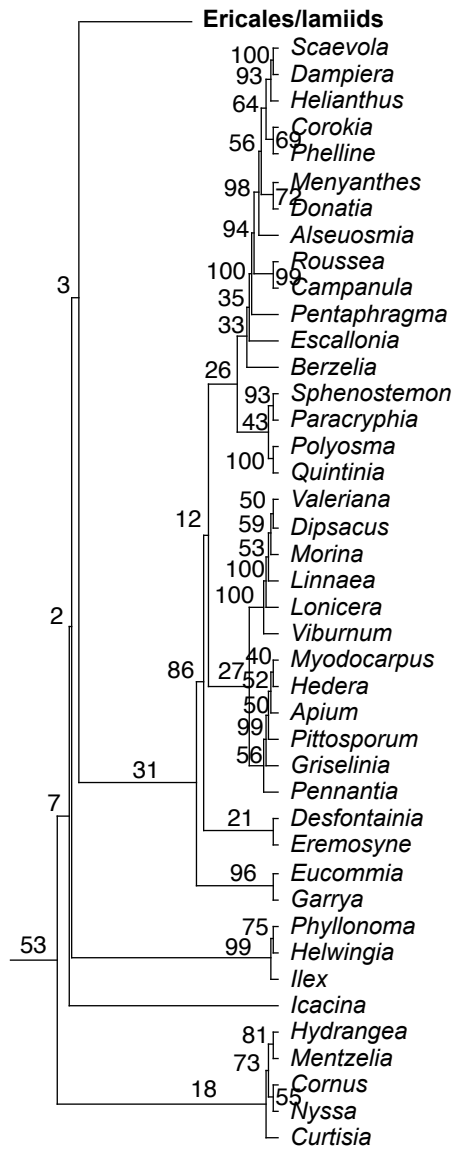


Fig. S2.1-7: Ericales/lamiids

