

Fig. S2.2-1: gymnosperms & basal angiosperms

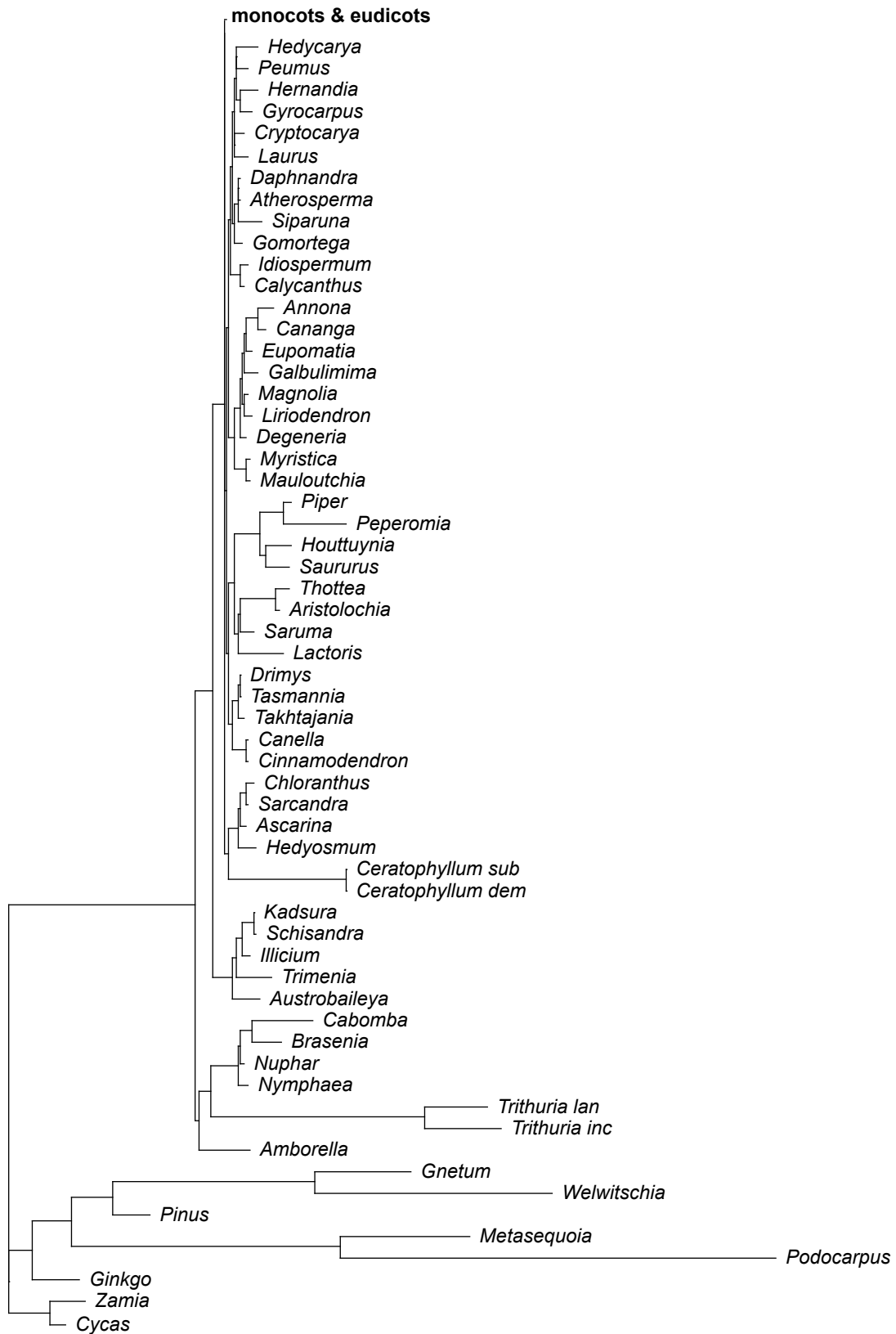


Fig. S2.2-2: monocots & basal eudicots

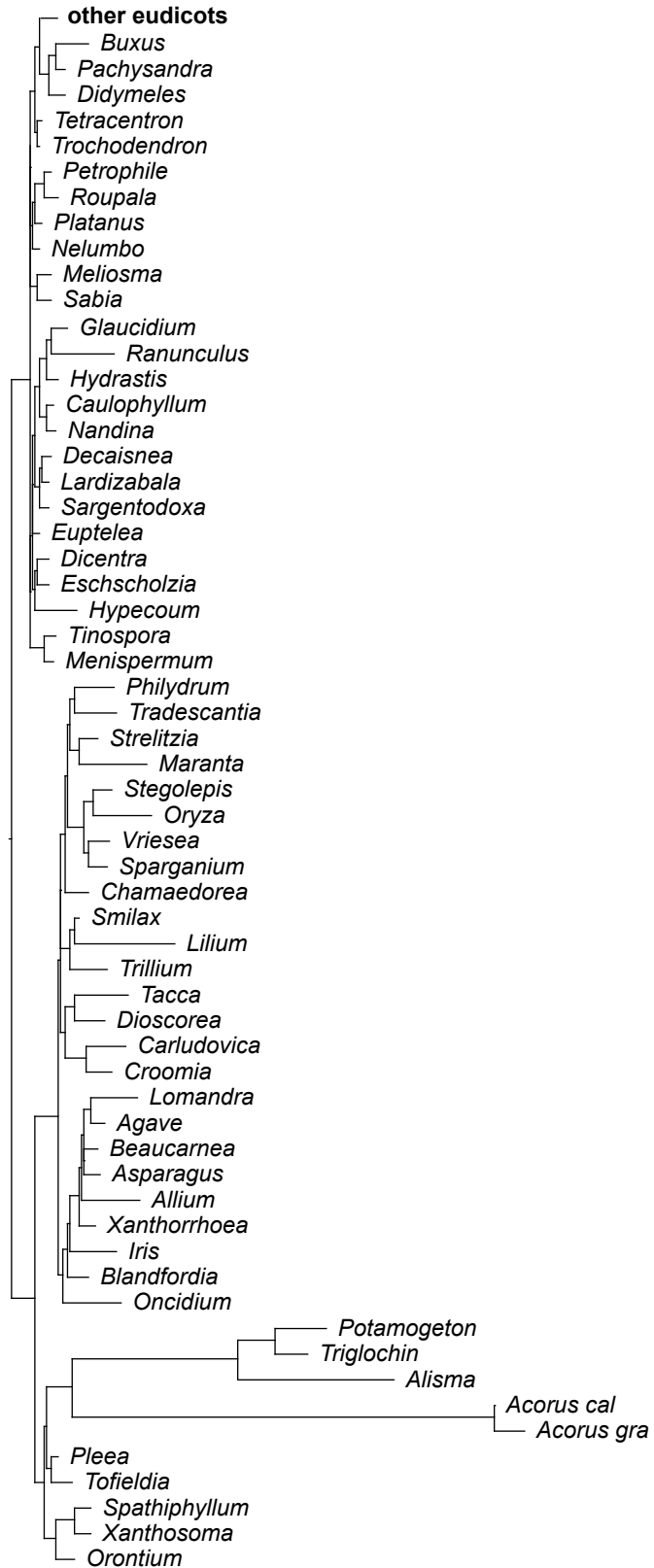


Fig. S2.2-3: Gunnerales/rosids exclusive of the COM-malvids

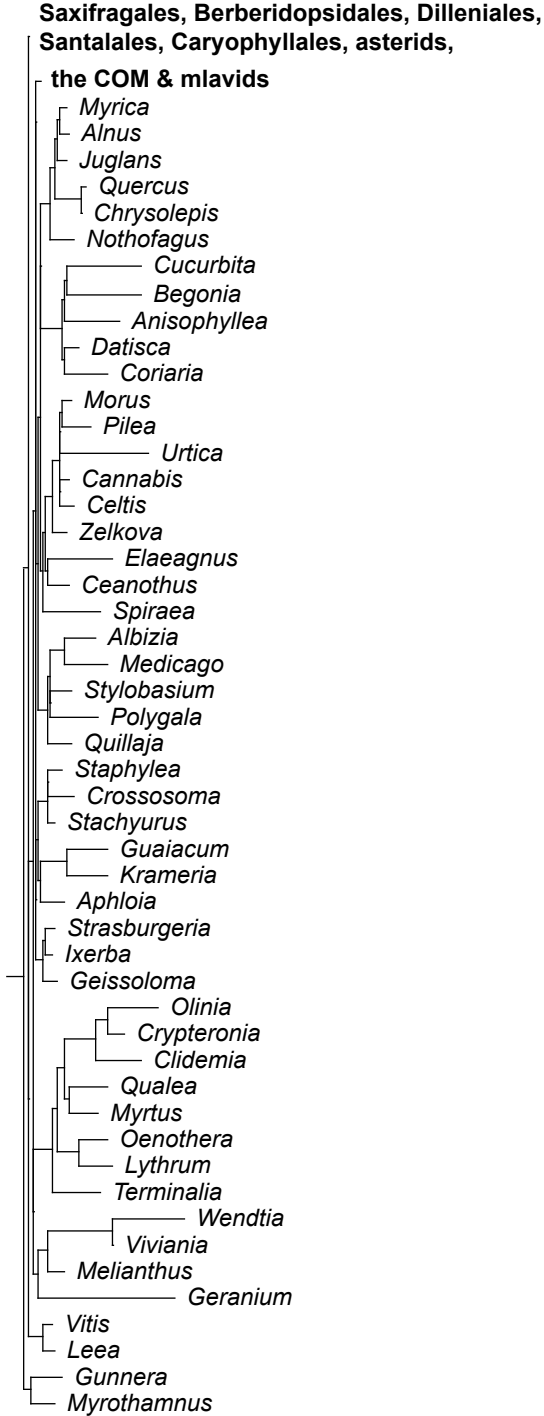
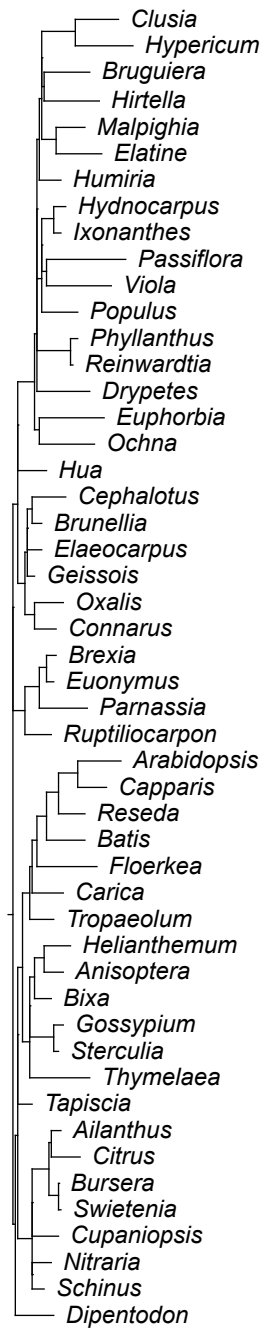


Fig. S2.2-4: the COM & malvids



**Fig. S2.2-5: Saxifragales/
Dilleniales/Berberidopsidales/
Santalales/Caryophyllales**

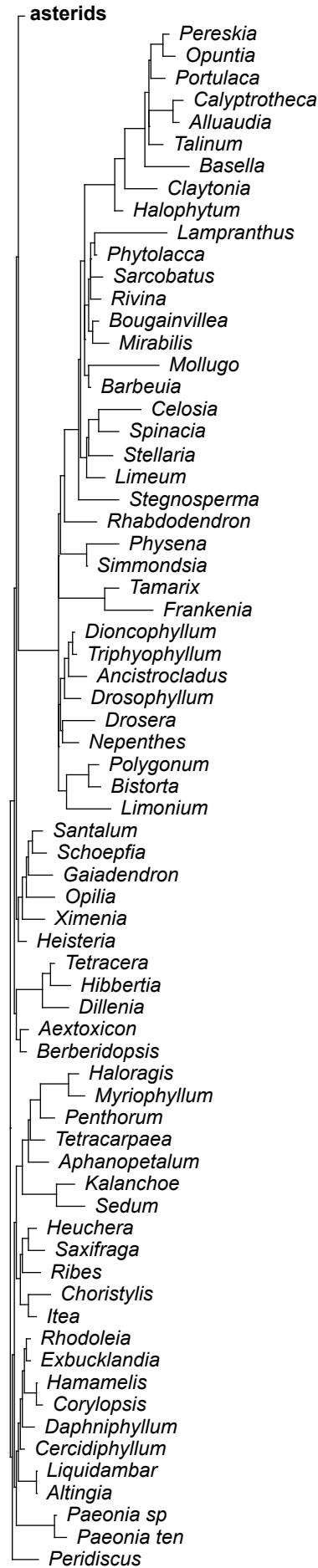


Fig. S2.2-6: Cornales/campanulids

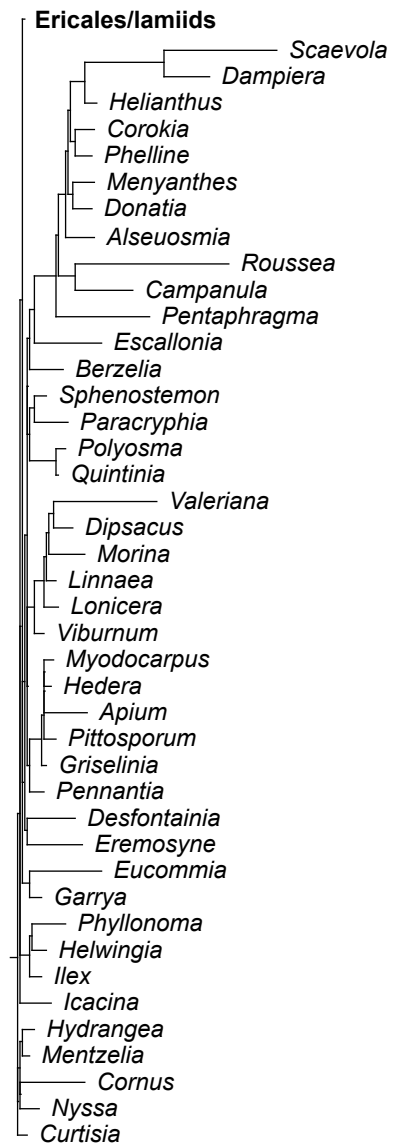


Fig. S2.2-7: Ericales/lamiids

