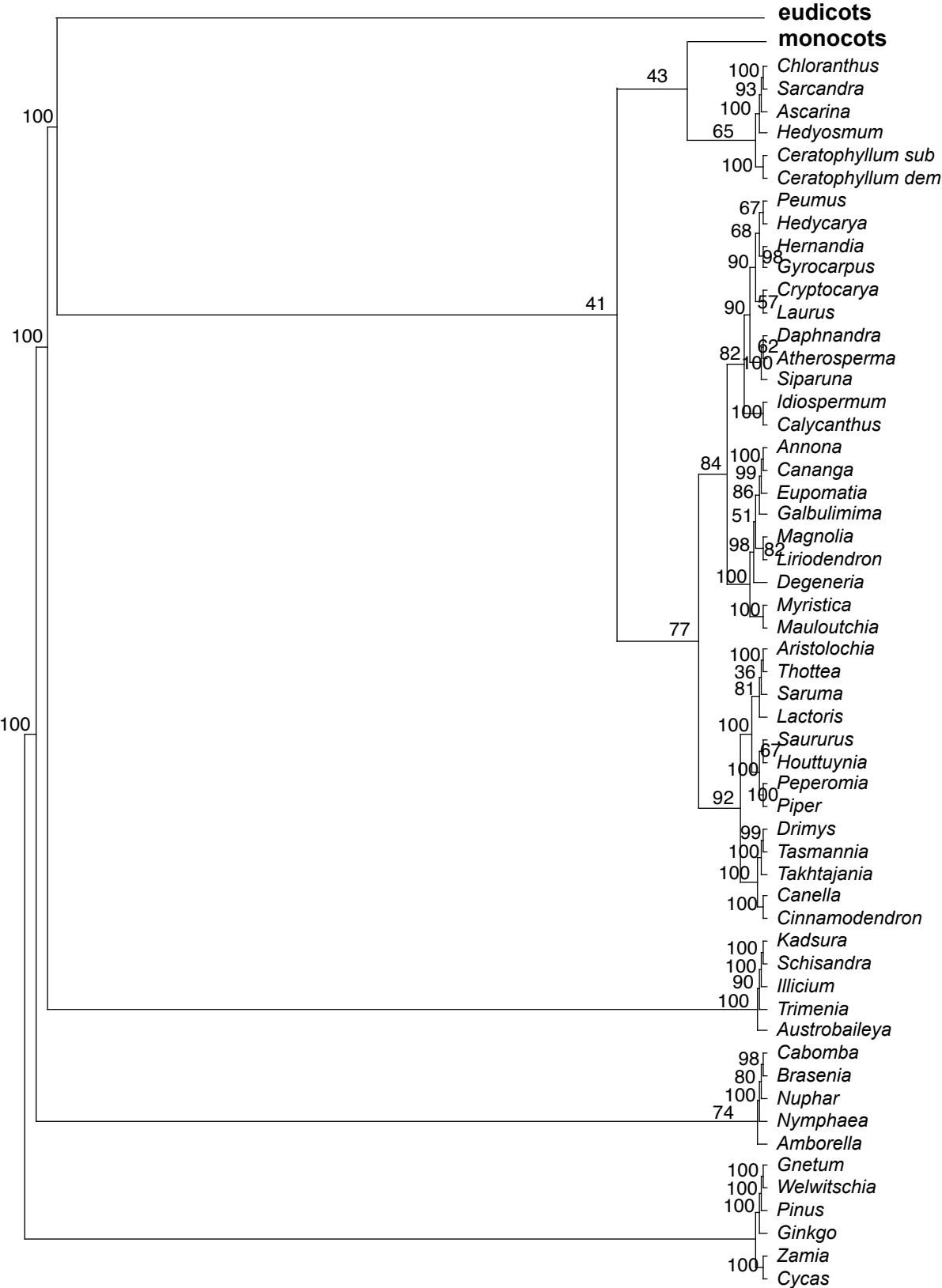


**Fig. S3-1: gymnosperms & basal angiosperms**



**Fig. S3-2: monocots & basal eudicots**

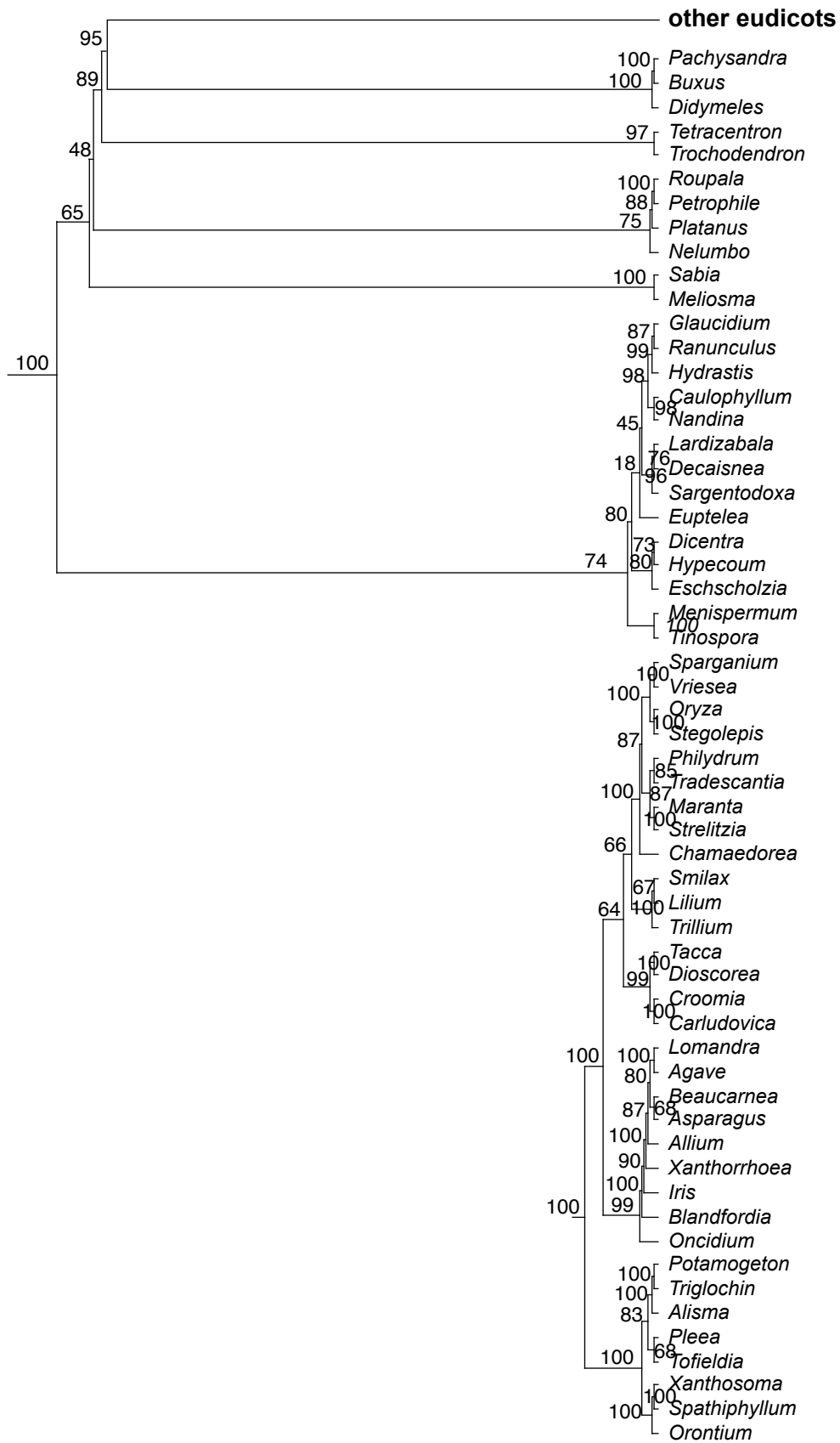


Fig. S3-3: Gunnerales/rosids exclusive of the COM-malvids

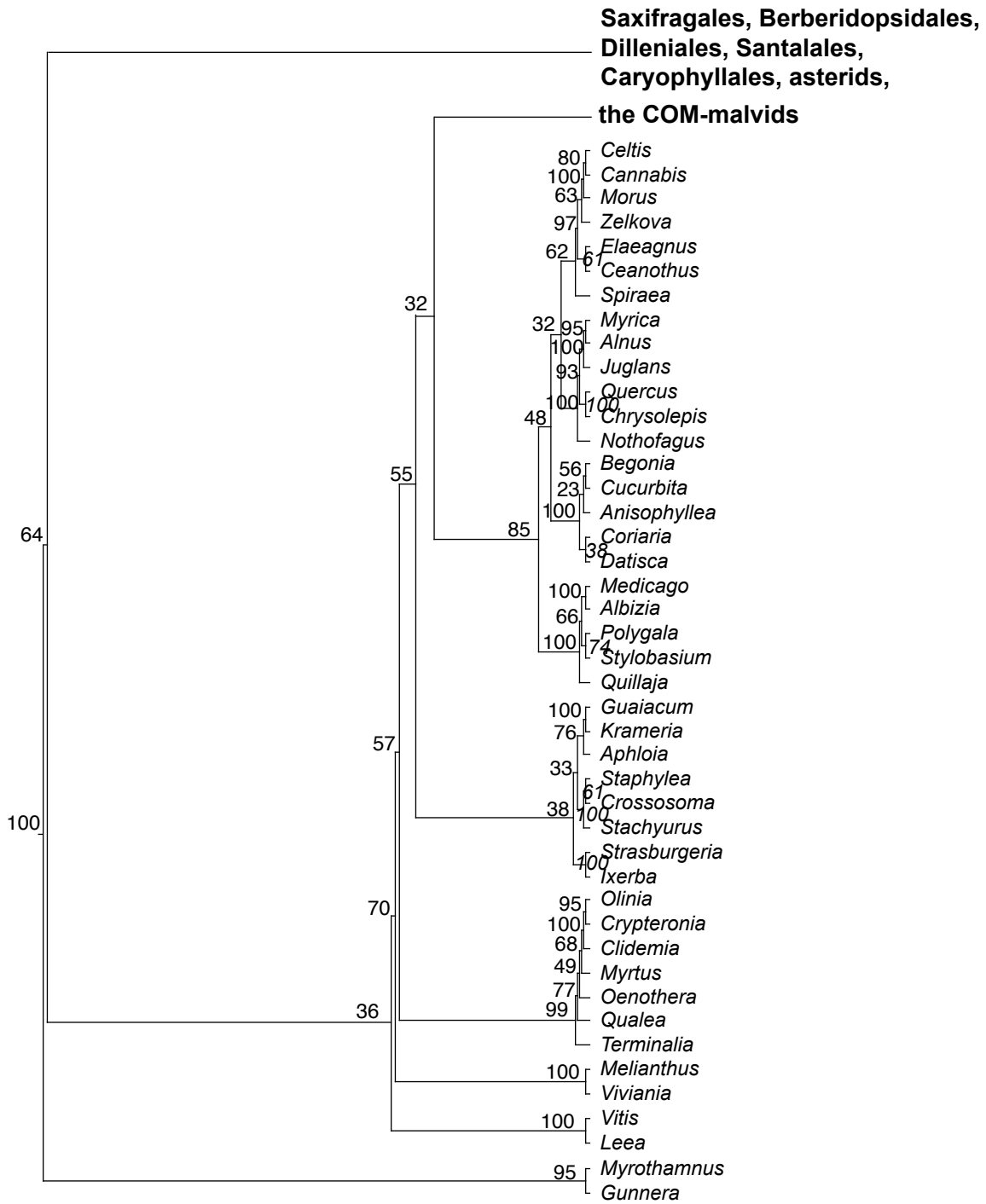
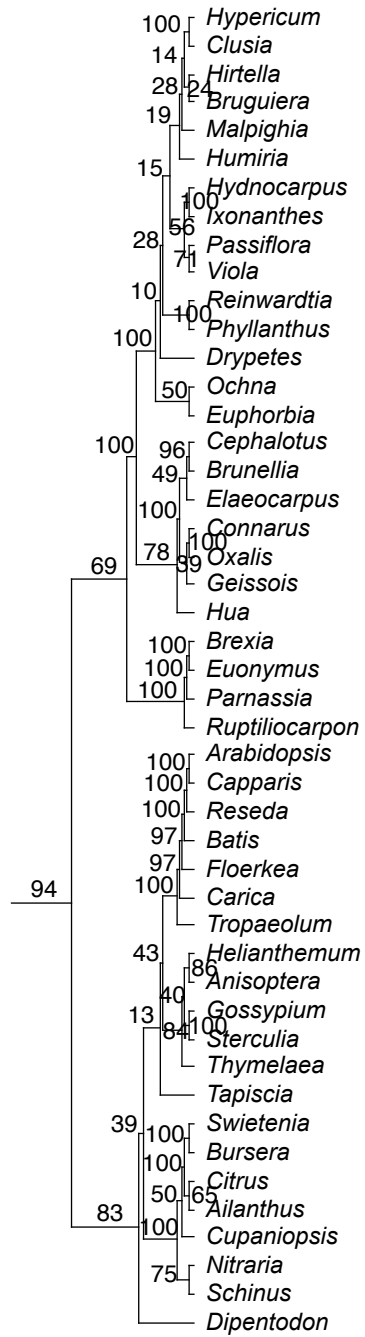


Fig. S3-4: the COM & malvids



**Fig. S3-5: Saxifragales/  
Dilleniales/Berberidopsidales/  
Santalales/Caryophyllales**

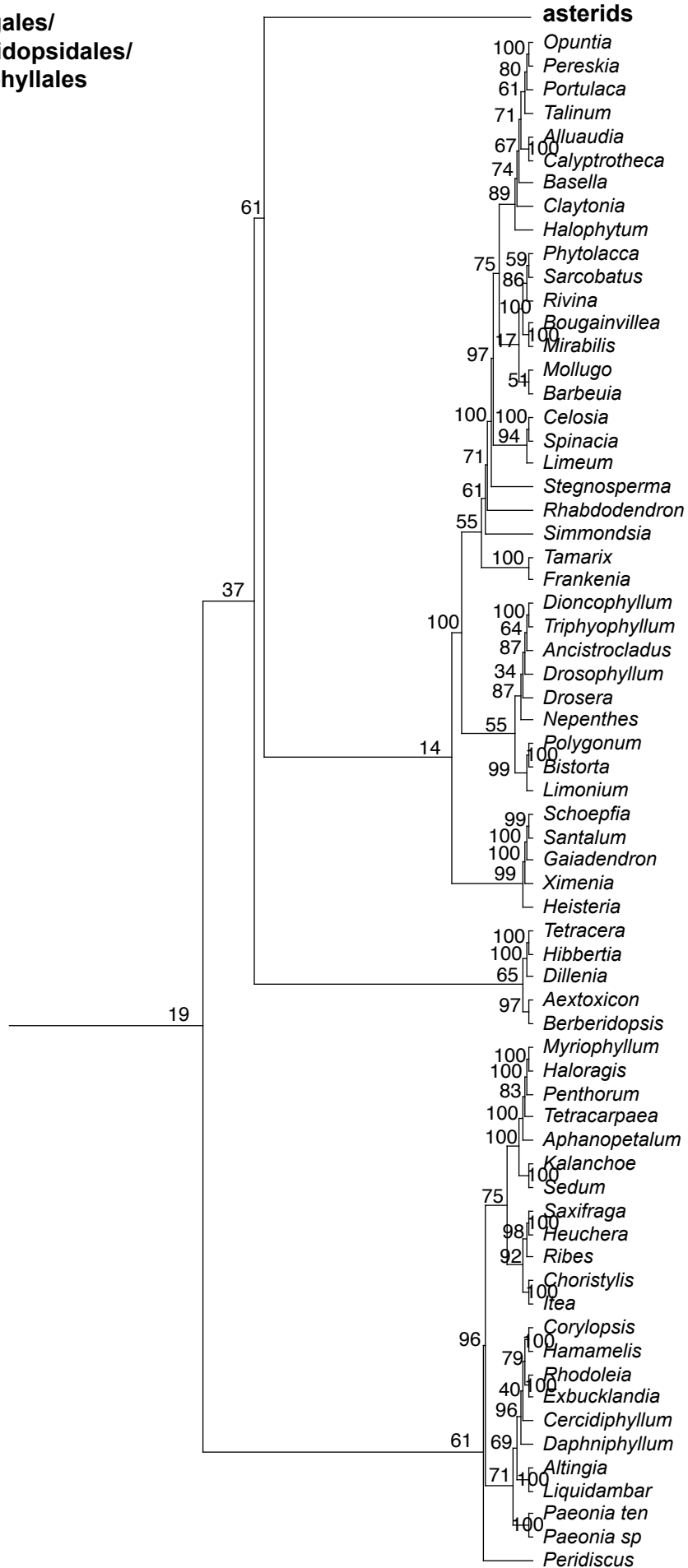


Fig. S3-6: Ericales/Cornales/campanulids

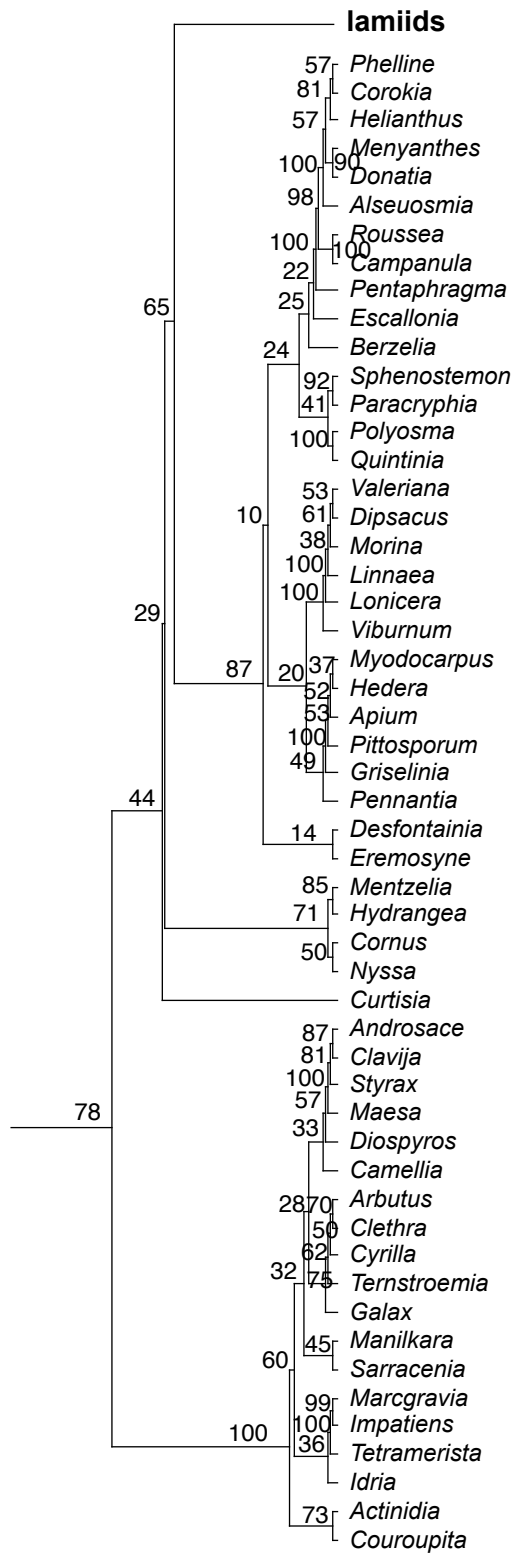


Fig. S3-7: lamiids

